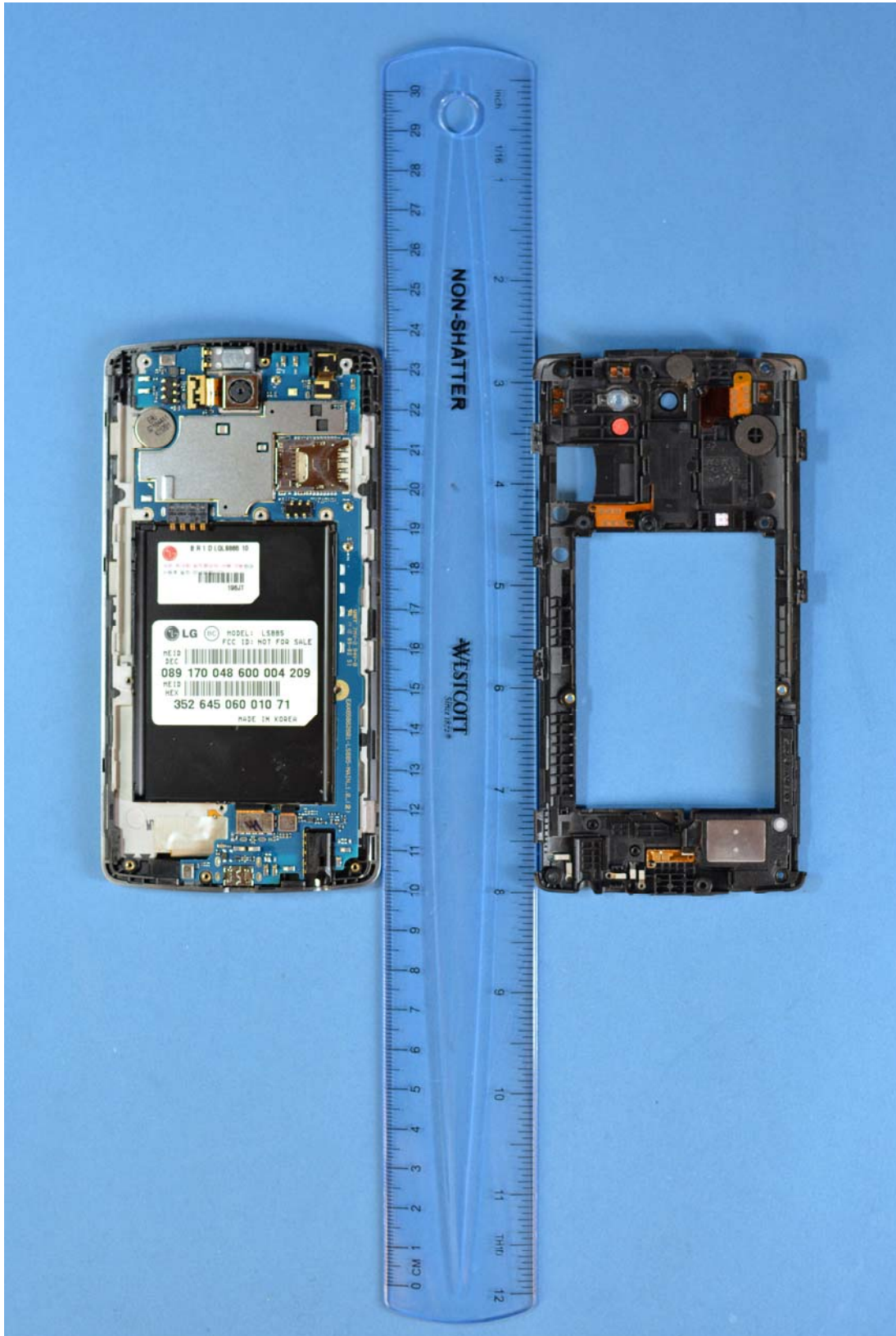


INTERNAL PHOTOGRAPHS

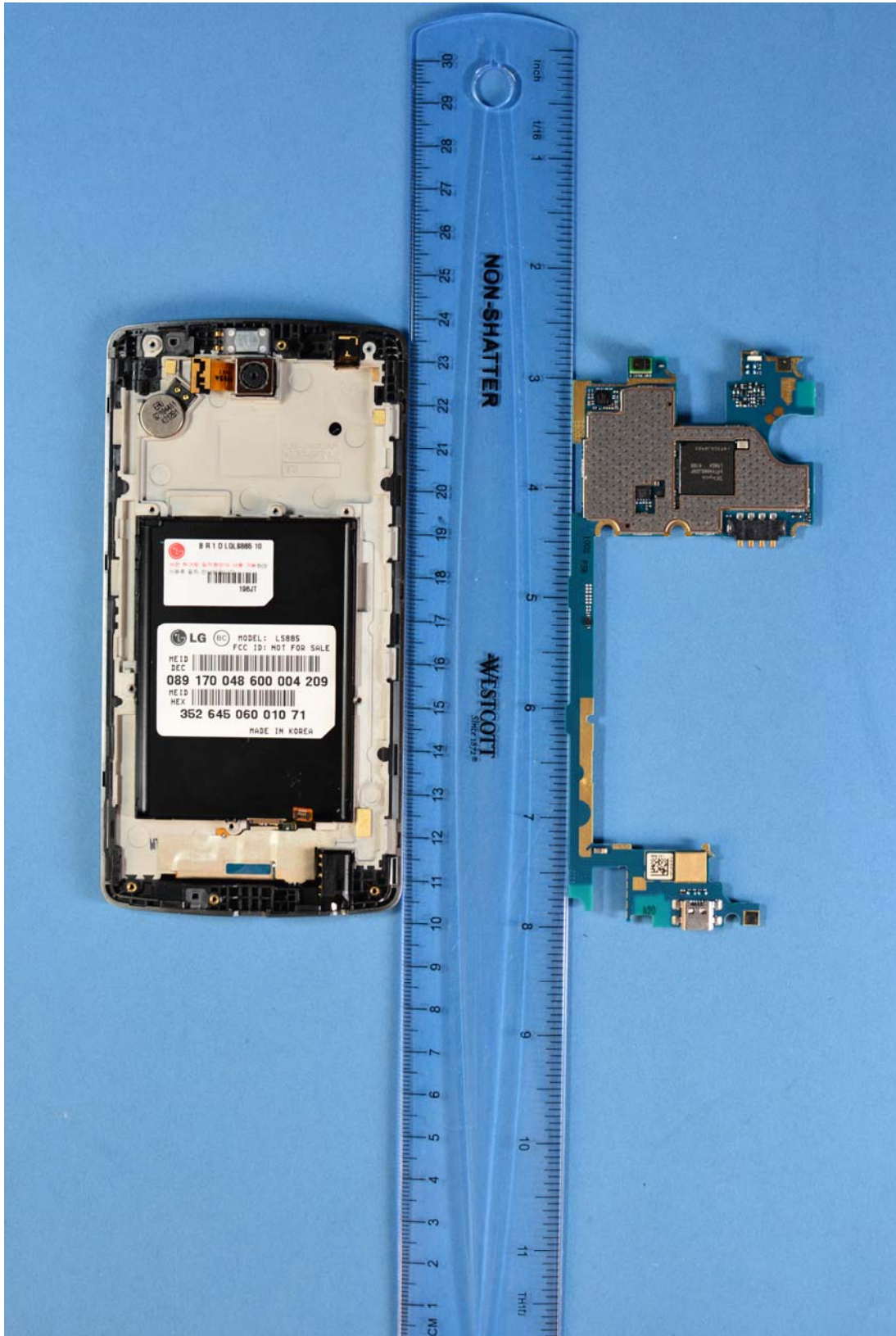


	<p>LG Electronics MobileComm U.S.A FCC ID: ZNFLS885</p>	<p>Model: LS885</p>
<p>Internal Photos</p>	<p>EUT Type: Portable Handset</p>	<p>Page 1 of 11</p>

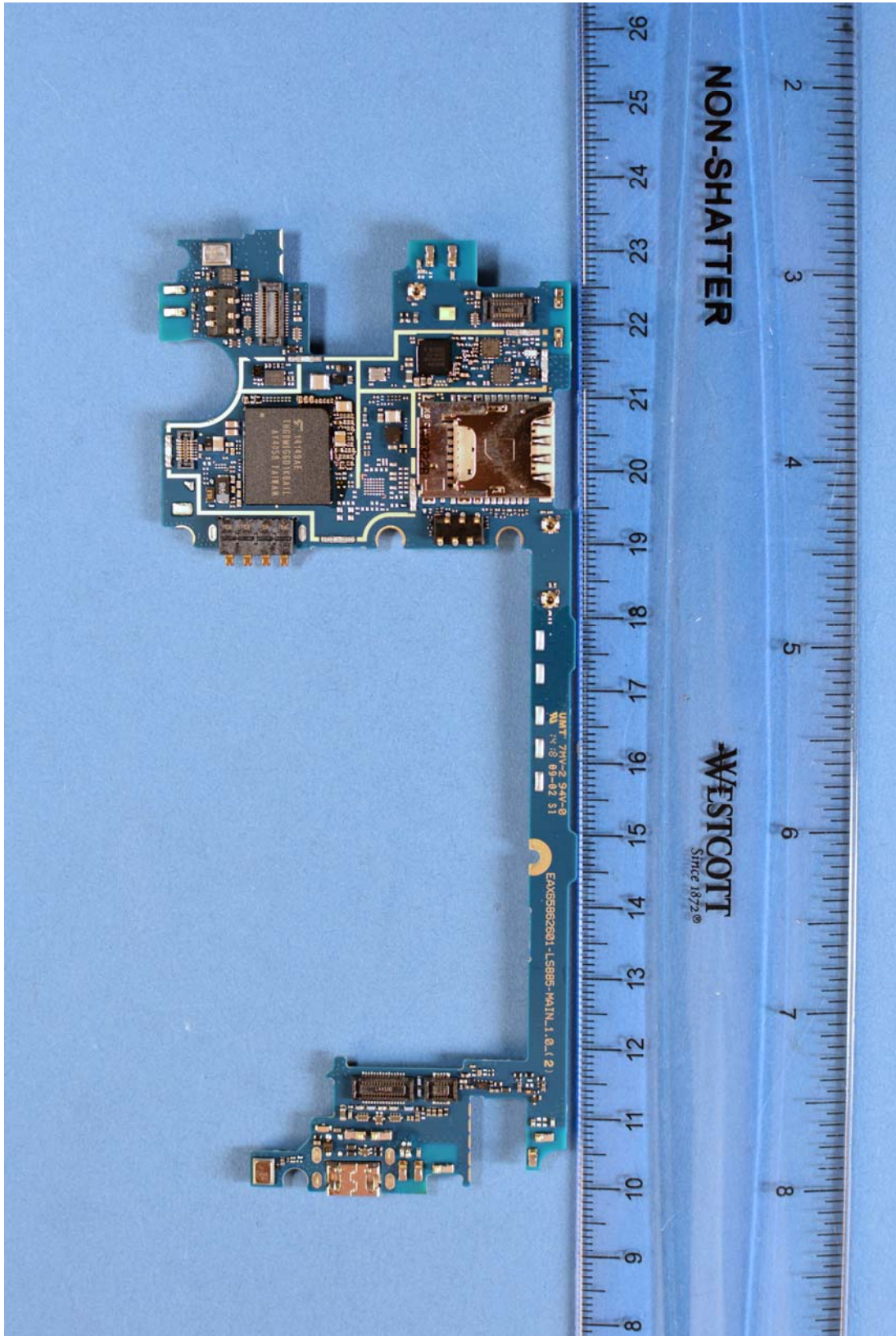


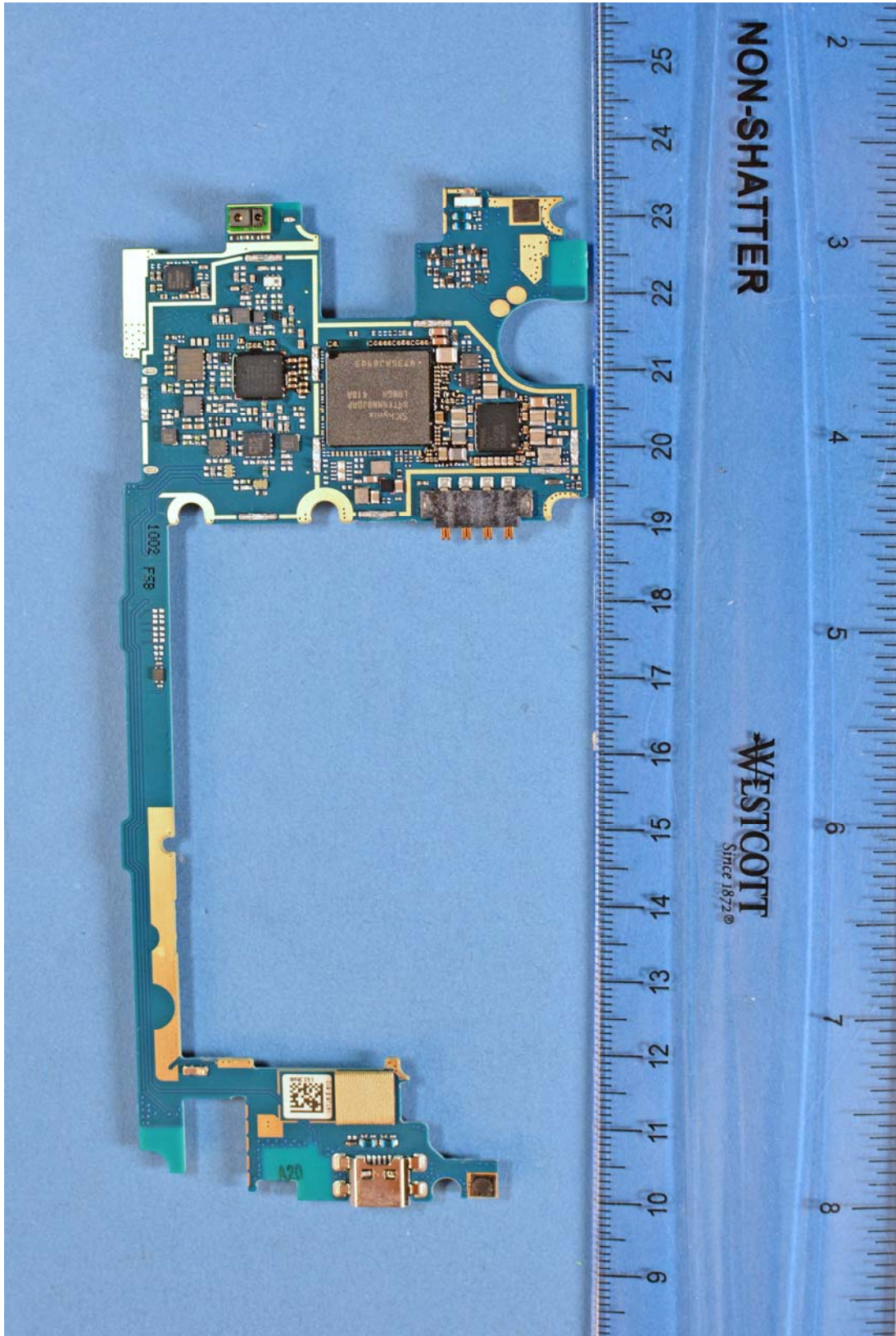


	<p>LG Electronics MobileComm U.S.A FCC ID: ZNFLS885</p>	<p>Model: LS885</p>
<p>Internal Photos</p>	<p>EUT Type: Portable Handset</p>	<p>Page 3 of 11</p>

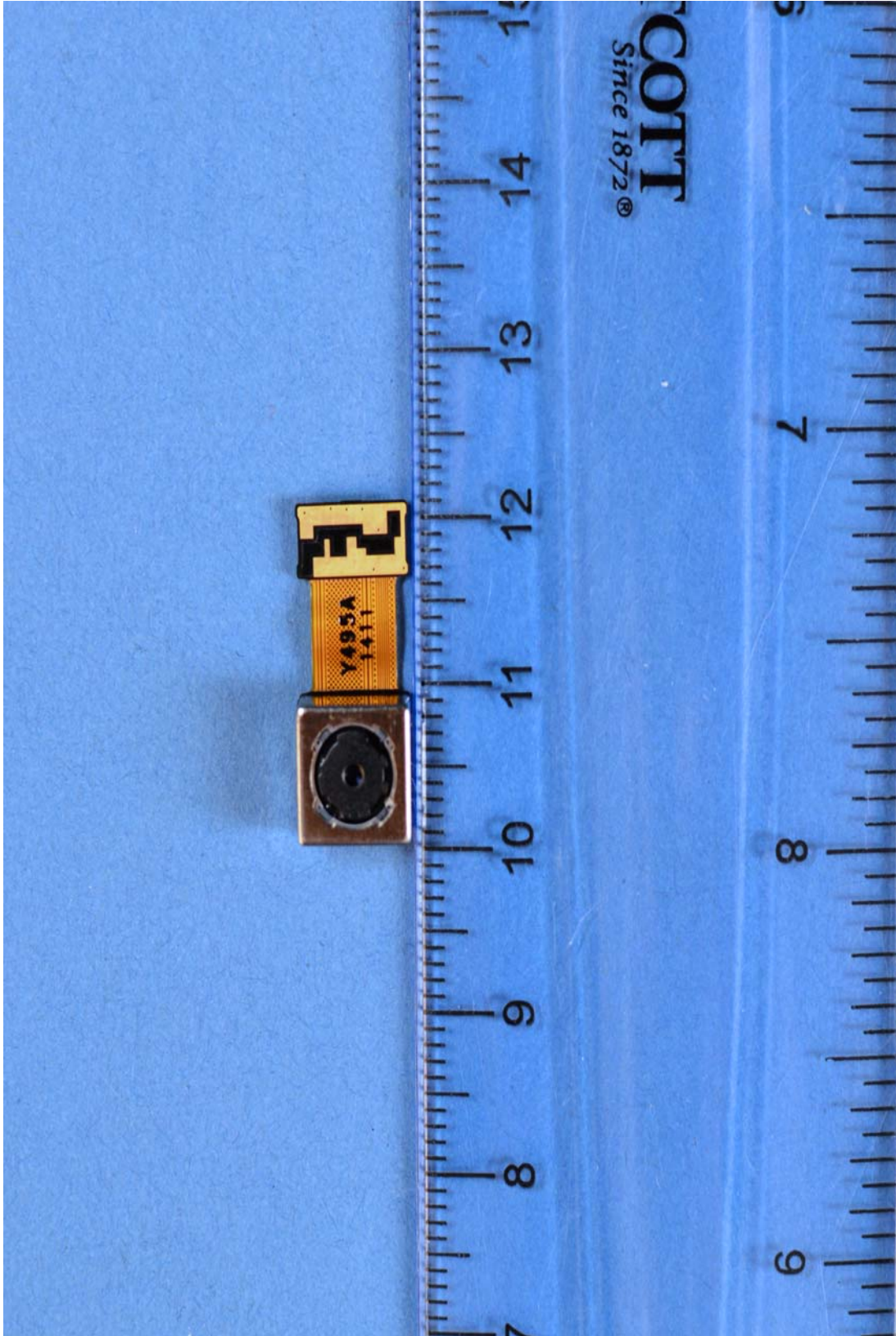


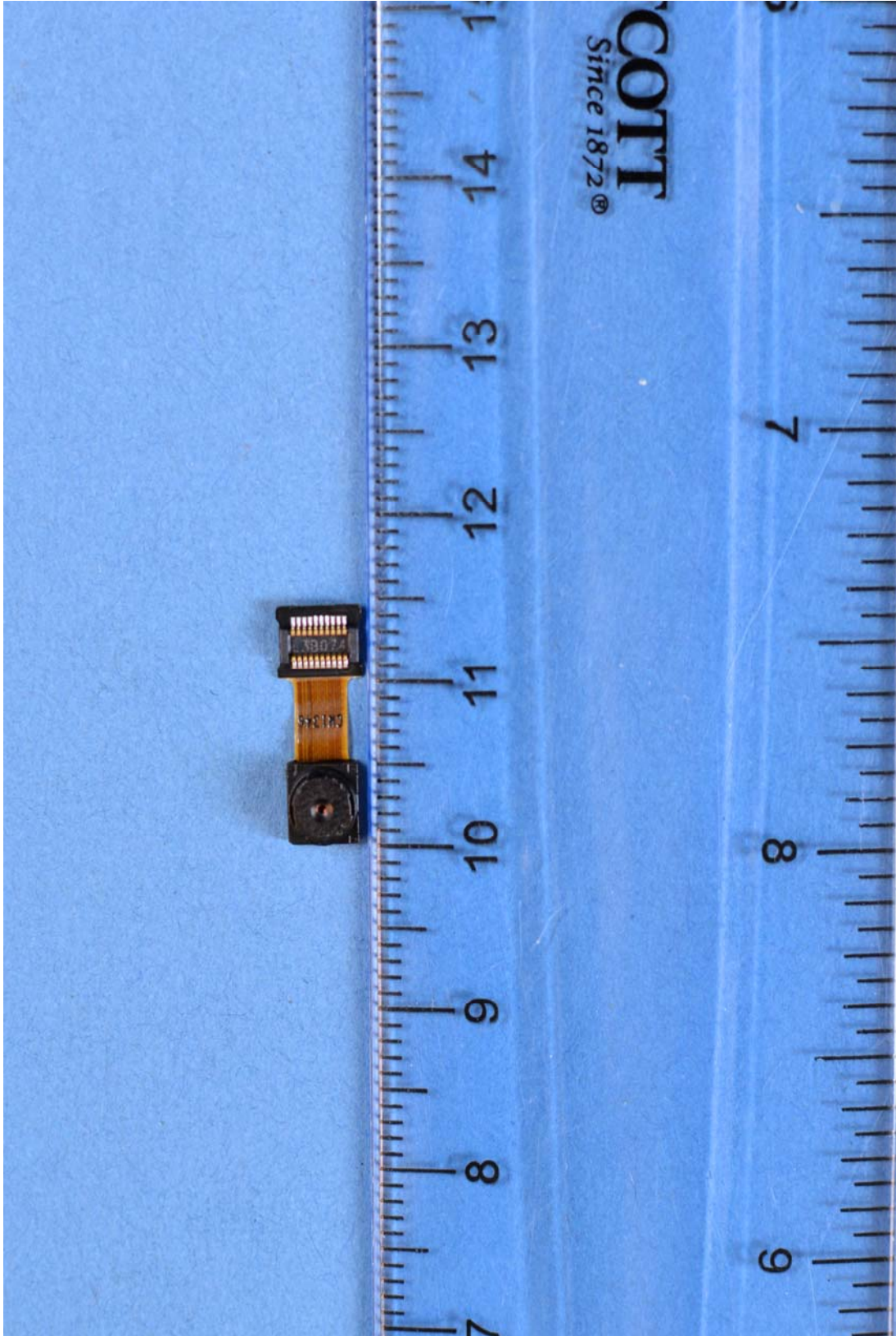
	<p>LG Electronics MobileComm U.S.A FCC ID: ZNFLS885</p>	<p>Model: LS885</p>
<p>Internal Photos</p>	<p>EUT Type: Portable Handset</p>	<p>Page 4 of 11</p>











	LG Electronics MobileComm U.S.A FCC ID: ZNFLS885	Model: LS885
Internal Photos	EUT Type: Portable Handset	Page 9 of 11



	<p>LG Electronics MobileComm U.S.A FCC ID: ZNFLS885</p>	<p>Model: LS885</p>
<p>Internal Photos</p>	<p>EUT Type: Portable Handset</p>	<p>Page 10 of 11</p>



LG

型号: BL-54SH Typ 2540 mAh / 9.7 Wh
Min 2460 mAh / 9.3 Wh

Rechargeable Li-Ion Battery 3.8 V
11CP6 / 49 / 65
Li-Ion Battery 3.8V Bateria de Li-ion 3.8Vcc
锂离子电池 3.8V

- 사용 설명서를 참고 하세요
- REFER TO USER'S GUIDE
- CONSULTE LA GUÍA DEL USUARIO
- CONSULTE O MANUAL DO USUARIO
- REPORTEZ-VOUS AU GUIDE DE L'UTILISATEUR



- 注意事项
- 仅可使用说明书指定的充电器
 - 切勿随意拆开或投入火中、水中或与金属品接触
 - 避免放置于过热、潮湿或腐蚀性环境中
 - 严禁短路，不可挤压或碰撞

充电限制电压: 4.35 V 执行标准: GB/T 18287-2000
乐金化学(南京)锂电电子材料有限公司
P/N: EAC62018206 LLL

生产日期: **2014.04.02(L)**

To dispose of properly Recycling number: 1-800-822-8837
Made in China / Fabricado na China / Fabricado en China

