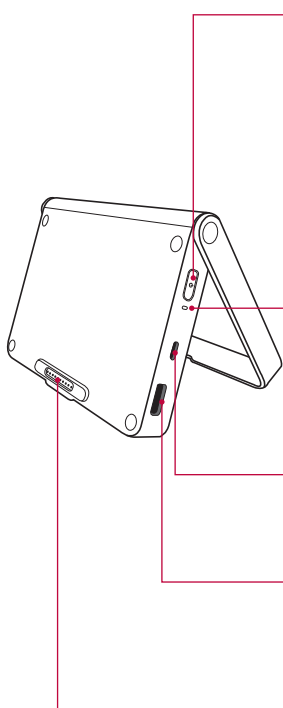


# LG G Pad Plus Pack Overview

The LG G Pad Plus pack is a portable speaker and battery pack designed for the LG G Pad X2 8.0 PLUS tablet.

When attached to the tablet and turned on, you can listen to the tablet's sound through the LG G Pad Plus pack and charge the tablet at the same time.



## Power Button

Press to turn on.

Press and hold to turn off.



- If the LG G Pad X2 8.0 PLUS tablet is detached, the LG G Pad Plus pack will automatically turn off.
- If no device is connected to the LG G Pad Plus pack for 15 sec, the LG G Pad Plus pack will automatically turn off.

## LED Indicator

Indicates the charging status and battery level. It is red while charging and turns green when charging is completed. When the battery reaches 30% of its capacity, it turns red. When the battery reaches 5% of its capacity, the red LED blinks.

## USB Type-B Port (micro USB Port)

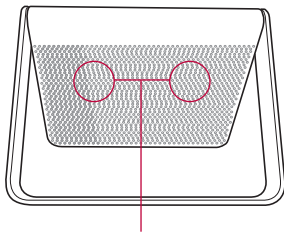
Connect a cable to charge the LG G Pad Plus pack or the LG G Pad Plus pack and the tablet (when they are attached).

## USB Type-A Port (Output 2) (USB Peripheral Port)

Plug an USB Type-A cable into the port to connect OTG devices (such as a keyboard) or charge other phones.

## Connecting Terminals (Output 1)

Attach the tablet by matching the terminals. Magnets on the LG G Pad Plus pack align the tablet properly.



**Stereo Speakers**



- When you connect another device to charge using a USB cable without the LG G Pad X2 8.0 PLUS tablet attached, charging will start after about 4 seconds to check the output mode.
- To perform a reset of the Plus Pack, simply press and hold the Power button for about 8 seconds.

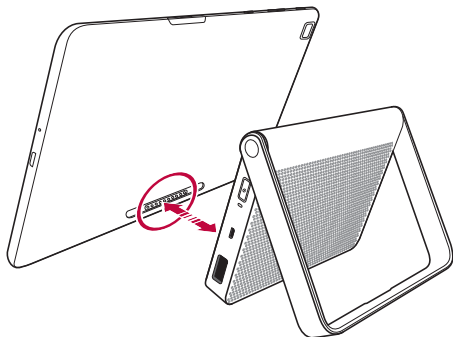


- Risk of fire and burns. Do NOT open, crush, heat above 60°C/140°F or incinerate. Violation of the instructions may cause minor or serious damage to the product.

# Attaching the Tablet to the LG G Pad Plus Pack

Simply match the charging terminals on the tablet and LG G Pad Plus pack.

Magnets on the LG G Pad Plus pack align the tablet properly.



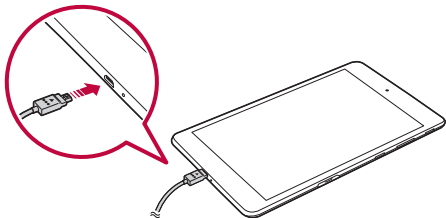
- Do not detach the LG G Pad Plus pack while playing music or a video.
- Every time you attach or detach the LG G Pad Plus pack, it is recommended that you calibrate the motion sensor. See [Motion sensor calibration](#).

# Charging the Battery

You can charge your tablet's battery using the included AC adapter.

## Charging the Tablet

The Charger/USB cable port is located at the bottom of the device. Insert the charger and plug it into a power outlet.



Charge the battery before using it for first time. Use the charger included with your device to charge the battery. A computer can also be used to charge the battery by connecting the device to it using the USB cable.



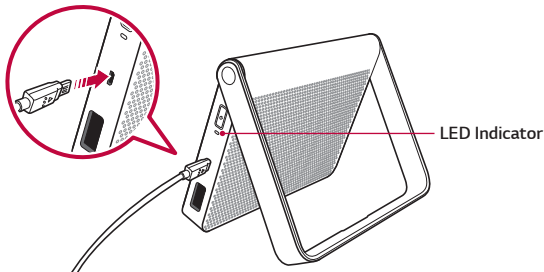
- Use only LG-approved chargers and cables. The use of unapproved chargers or cables may cause a battery charging delay or display a pop-up message regarding slow charging. It can also cause the battery to explode or damage the device, which is not covered by the warranty.



- Your device has an internal rechargeable battery. For your safety, do not remove the embedded battery.
- The battery must be fully charged initially to improve battery lifetime.
- Remove the charger from the power socket after the device is fully charged. This prevents unnecessary power consumption.

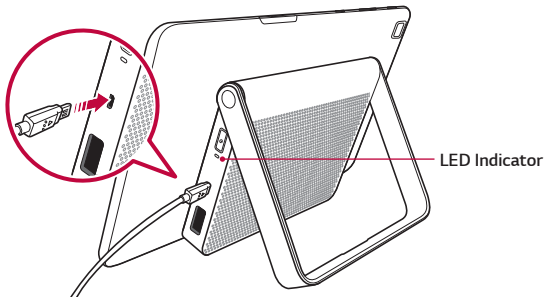
## Charging the LG G Pad Plus Pack

Plug the USB cable into the micro USB port (USB Type-B port) on the LG G Pad Plus pack. The LED indicator turns green when the battery is fully charged.



## Charging the Tablet While It's Attached to the LG G Pad Plus Pack

To charge the tablet and the LG G Pad Plus pack at the same time, plug the USB cable into the micro USB port on the LG G Pad Plus pack while it's attached to the tablet. When both are fully charged, the LED indicator on the LG G Pad Plus pack turns green and "Battery fully charged" on the tablet is displayed.





- Always unplug the charger from the wall socket after the device is fully charged to save unnecessary power consumption of the charger.

## Using the Battery Efficiently

Battery lifespan may decrease if you keep many apps and functions running simultaneously and continuously.

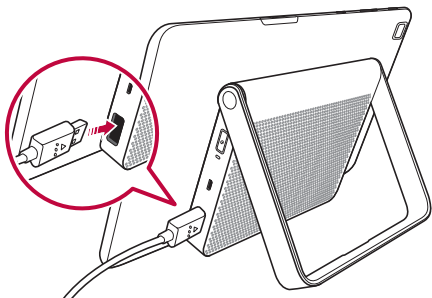
Stop apps and functions from running in the background to increase battery life.

To minimize battery consumption, follow these tips:

- Turn off the Bluetooth® or Wi-Fi network function when not using them.
- Set the screen timeout to as short a time as possible.
- Minimize the screen brightness.
- Set a screen lock when the device is not in use.
- Check the battery usage details and close any downloaded apps that are draining the battery.

# Connecting a USB Device to Your Tablet

- 1 Attach the tablet to the LG G Pad Plus pack.
- 2 Plug in the USB cable into an OTG (On The Go) device.
- 3 Insert the other end of USB cable into the USB peripheral port (Type-A port) located on the side of the LG G Pad Plus pack.



Some of the USB devices supported through the USB port include a keyboard, mouse, game controller, digital camera, and storage device (including an Android smartphone acting as external storage device). As most USB keyboards, mouse and game controllers are designed for desktop computers and operation systems, some devices may not function.