

LTE Band 25

Frequency: 1882.5 MHz; Duty Cycle: 1:1; Room Ambient Temperature: 24.0°C; Liquid Temperature: 23.0°C

Medium parameters used (interpolated): $f = 1882.5$ MHz; $\sigma = 1.373$ S/m; $\epsilon_r = 40.156$; $\rho = 1000$ kg/m³

DASY5 Configuration:

- Area Scan Setting: Find Secondary Maximum Within: 2.0 dB and with a peak SAR value greater than 0.0012W/kg
- Electronics: DAE3 Sn427; Calibrated: 1/9/2013
- Probe: EX3DV4 - SN3751; ConvF(7.18, 7.18, 7.18); Calibrated: 11/15/2012;
- Sensor-Surface: 2.5mm (Mechanical Surface Detection (Locations From Previous Scan Used)), Sensor-Surface: 2.5mm (Mechanical Surface Detection)
- Phantom: SAM; Type: QD000P40CD; Serial: 1629

RHS/Touch_QPSK_RB_1/24 Ch 26365/Area Scan (7x12x1): Measurement grid: dx=15mm, dy=15mm

[Info: Interpolated medium parameters used for SAR evaluation.](#)

Maximum value of SAR (measured) = 0.477 W/kg

RHS/Touch_QPSK_RB_1/24 Ch 26365/Zoom Scan (5x5x7)/Cube 0: Measurement grid: dx=8mm, dy=8mm, dz=5mm

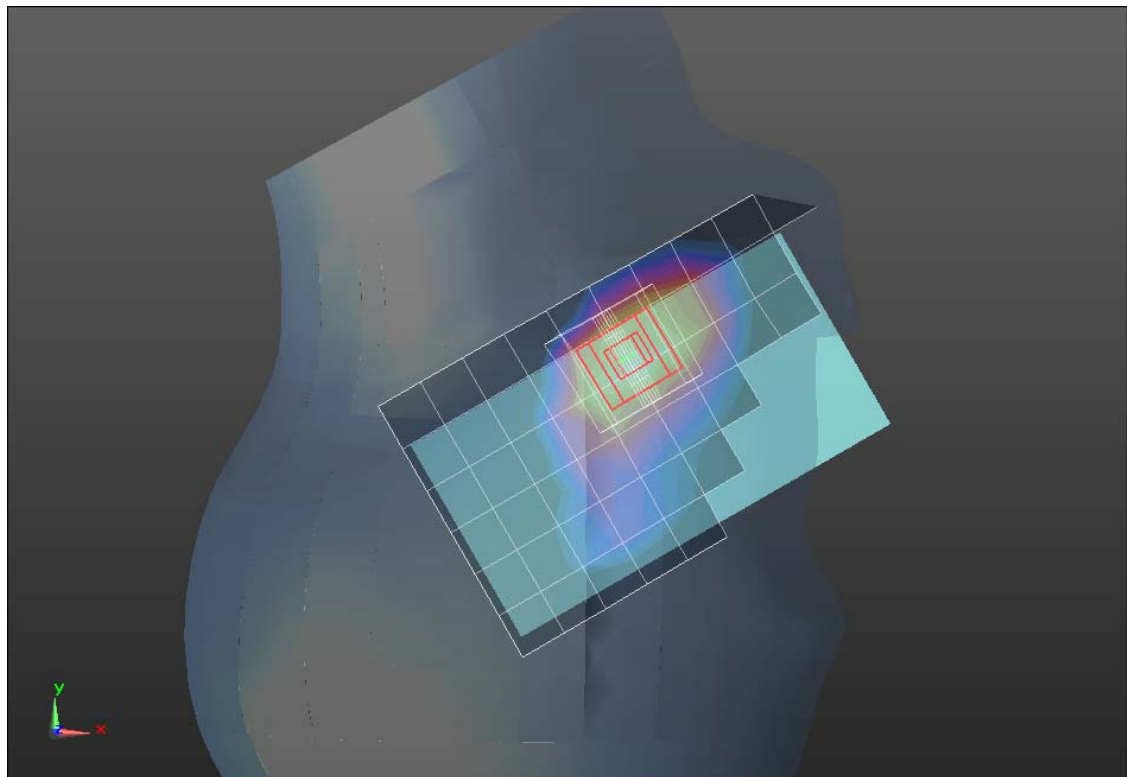
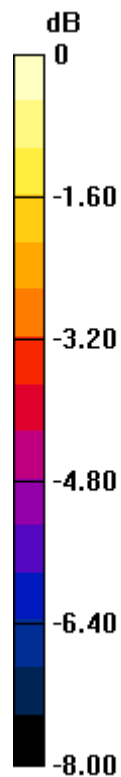
Reference Value = 19.051 V/m; Power Drift = -0.01 dB

Peak SAR (extrapolated) = 0.669 W/kg

SAR(1 g) = 0.419 W/kg; SAR(10 g) = 0.254 W/kg

[Info: Interpolated medium parameters used for SAR evaluation.](#)

Maximum value of SAR (measured) = 0.521 W/kg



0 dB = 0.521 W/kg = -2.83 dBW/kg

LTE Band 25

Frequency: 1882.5 MHz; Duty Cycle: 1:1; Room Ambient Temperature: 24.0°C; Liquid Temperature: 23.0°C
Medium parameters used (interpolated): $f = 1882.5$ MHz; $\sigma = 1.487$ S/m; $\epsilon_r = 51.812$; $\rho = 1000$ kg/m³

DASY5 Configuration:

- Area Scan Setting: Find Secondary Maximum Within: 2.0 dB and with a peak SAR value greater than 0.0012W/kg
- Electronics: DAE4 Sn1357; Calibrated: 2/5/2013
- Probe: EX3DV4 - SN3901; ConvF(7.73, 7.73, 7.73); Calibrated: 2/13/2013;
- Sensor-Surface: 2.5mm (Mechanical Surface Detection)
- Phantom: ELI v5.0 A; Type: QDOVA002AA; Serial: 1180

Rear/QPSK_RB 1/24_Ch 26365/Area Scan (8x12x1): Measurement grid: dx=15mm, dy=15mm

[Info: Interpolated medium parameters used for SAR evaluation.](#)

Maximum value of SAR (measured) = 0.645 W/kg

Rear/QPSK_RB 1/24_Ch 26365/Zoom Scan (5x5x7)/Cube 0: Measurement grid: dx=8mm, dy=8mm, dz=5mm

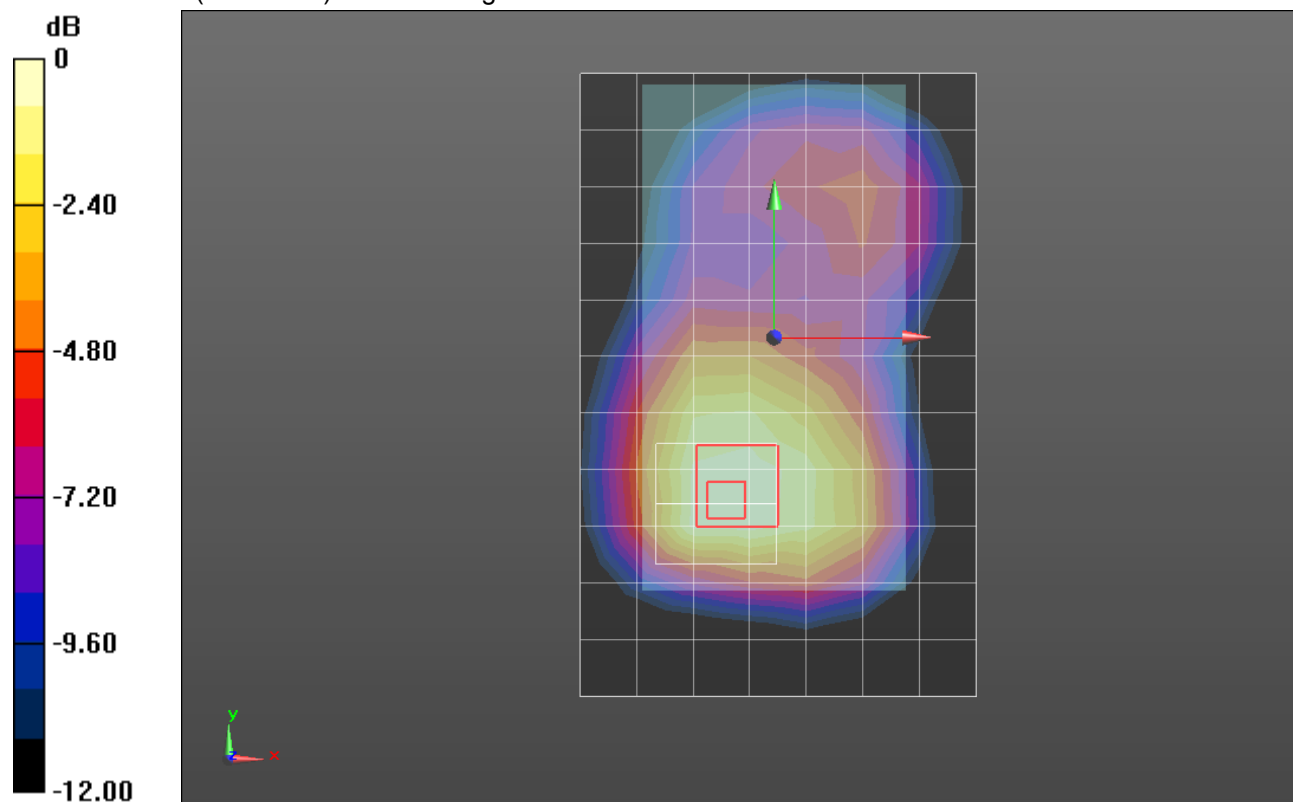
Reference Value = 22.004 V/m; Power Drift = -0.03 dB

Peak SAR (extrapolated) = 0.891 W/kg

SAR(1 g) = 0.573 W/kg; SAR(10 g) = 0.369 W/kg

[Info: Interpolated medium parameters used for SAR evaluation.](#)

Maximum value of SAR (measured) = 0.696 W/kg



0 dB = 0.696 W/kg = -1.57 dBW/kg