

## 16. External Photos

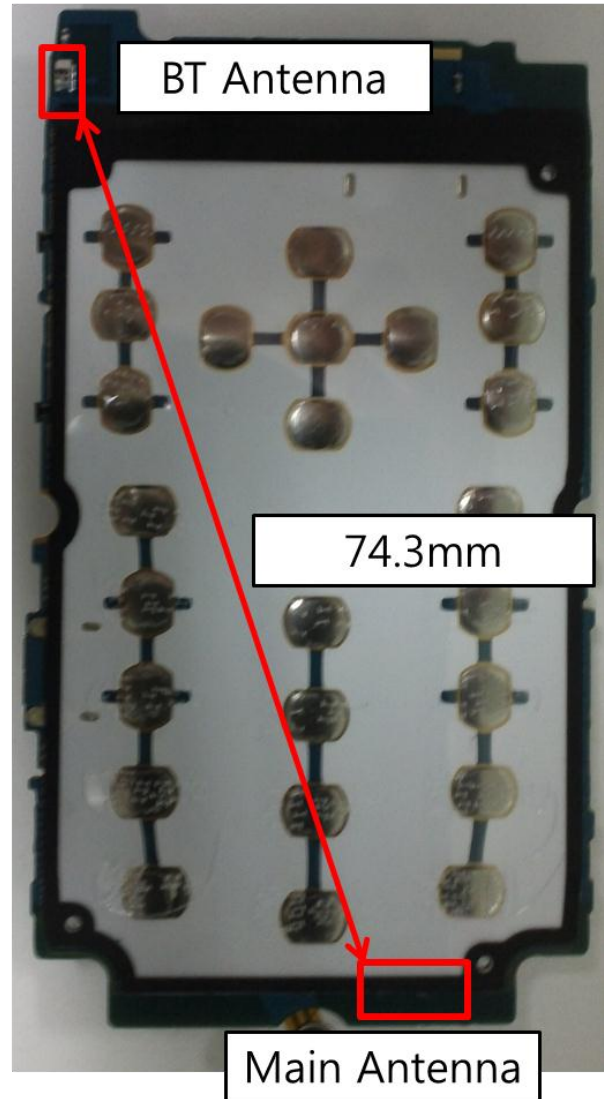
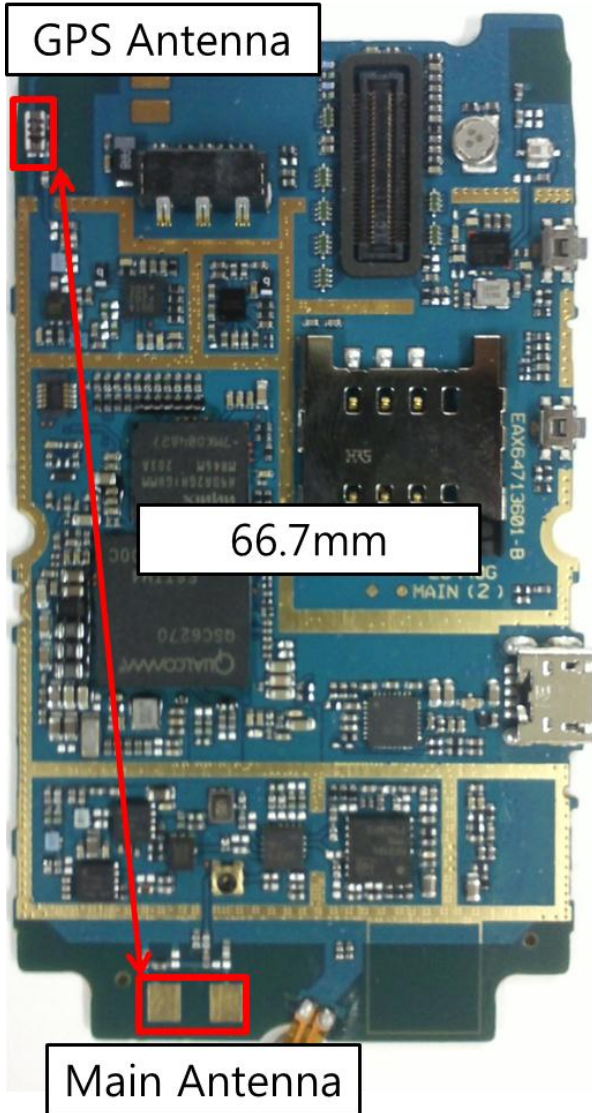
Front View



Rear View



### 17. Antenna Locations & Separation Distances



## 18. Setup Photos

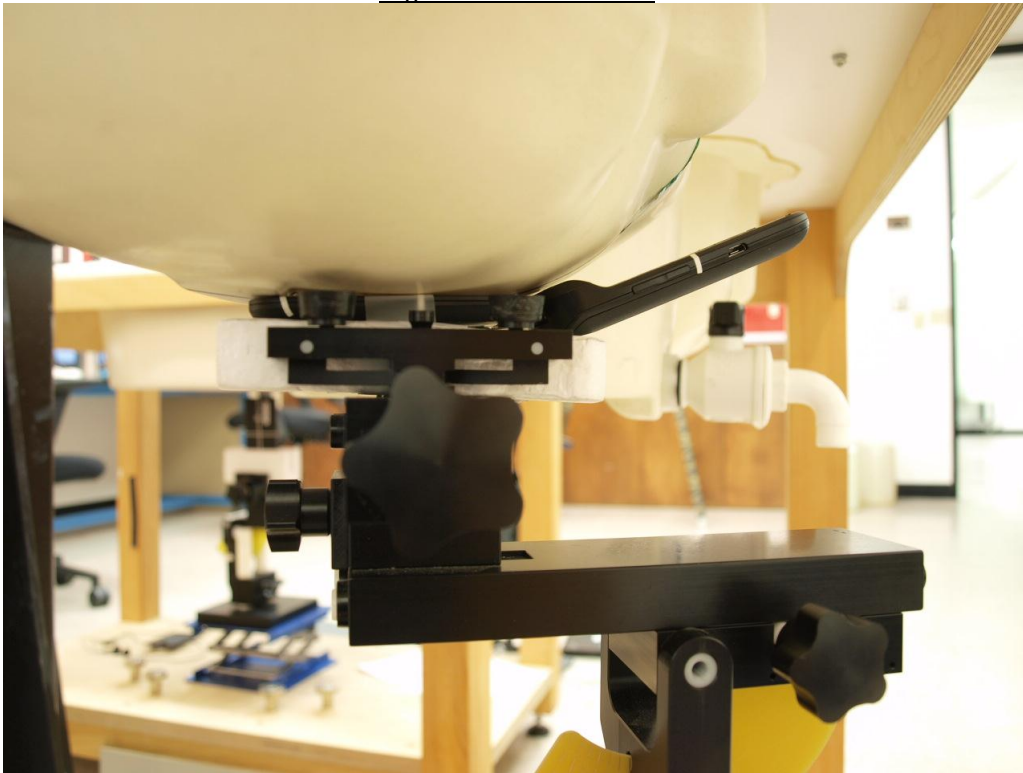
Left Hand Side Touch



Left Hand Side Tilt (15°)



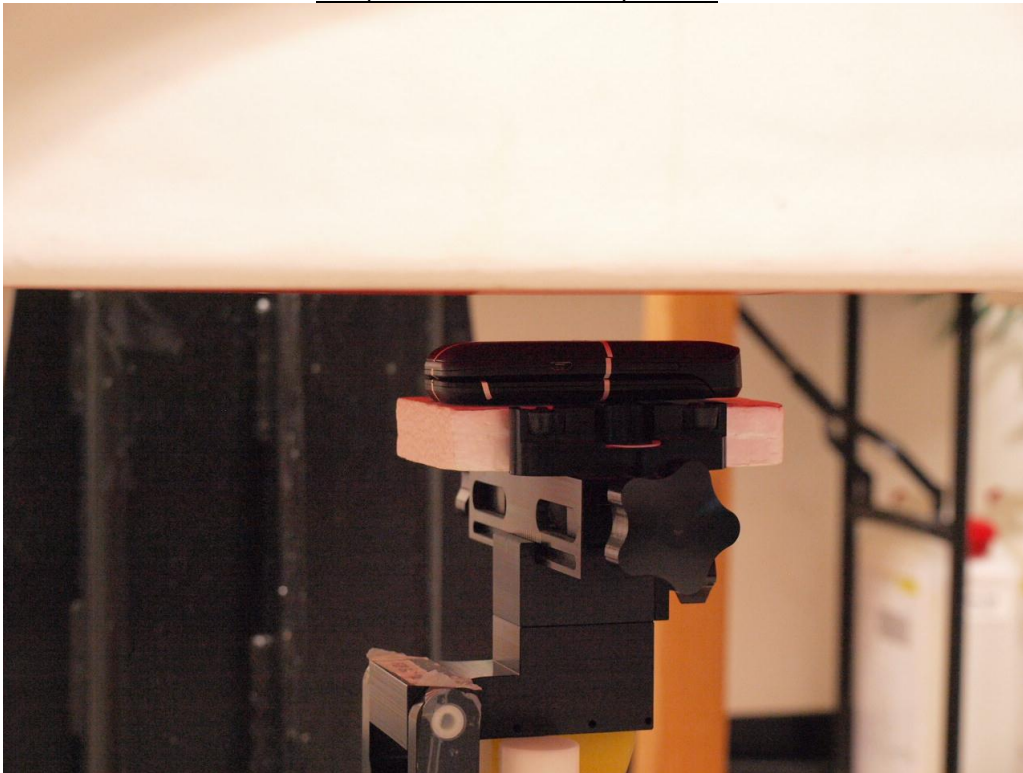
Right Hand Side Touch



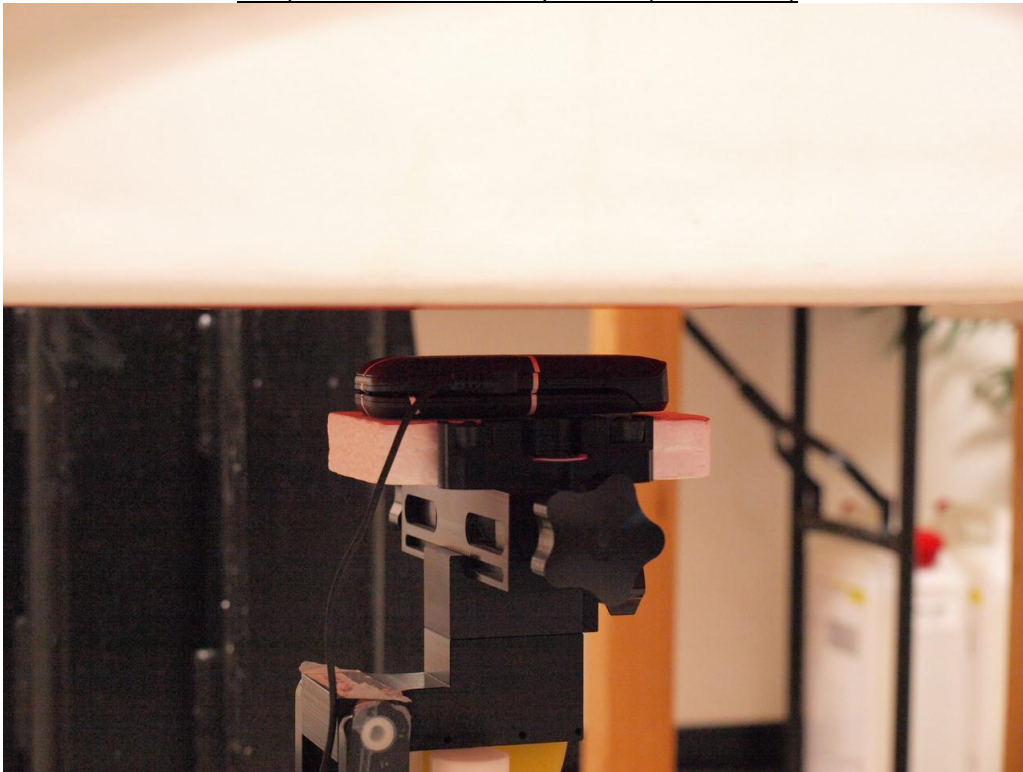
Right Hand Side Tilt (15°)



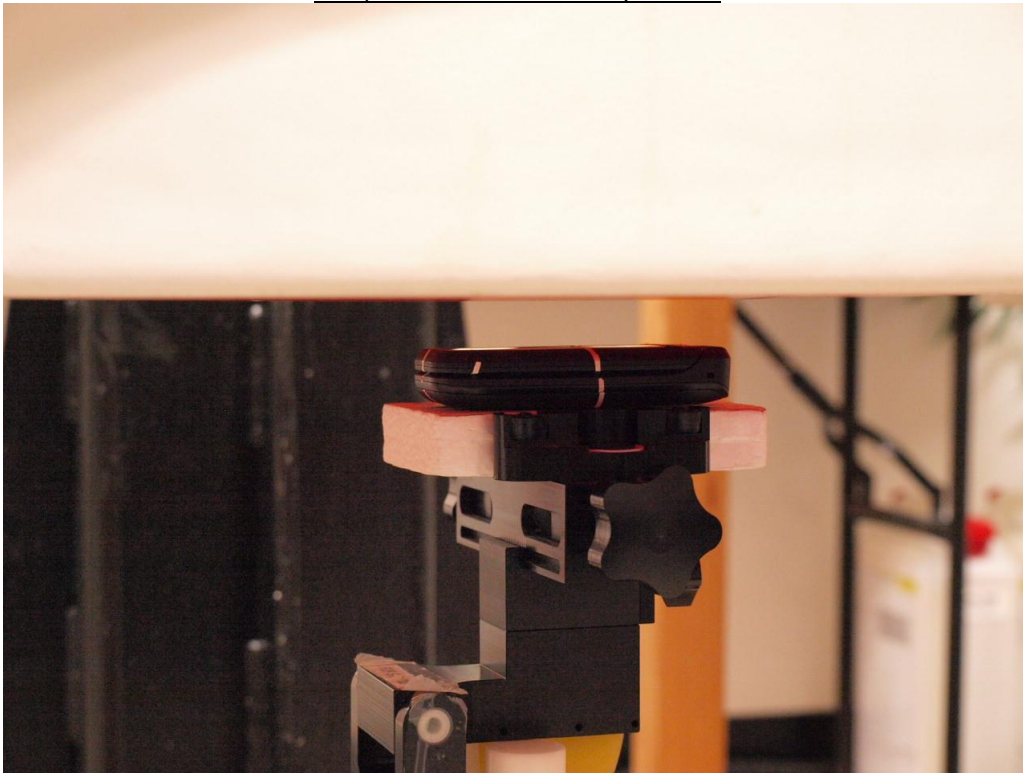
Body - Rear w/ 15 mm Separation



Body - Rear w/ 15 mm Separation (w/ Headset)



Body - Front w/ 15 mm Separation



**END OF REPORT**