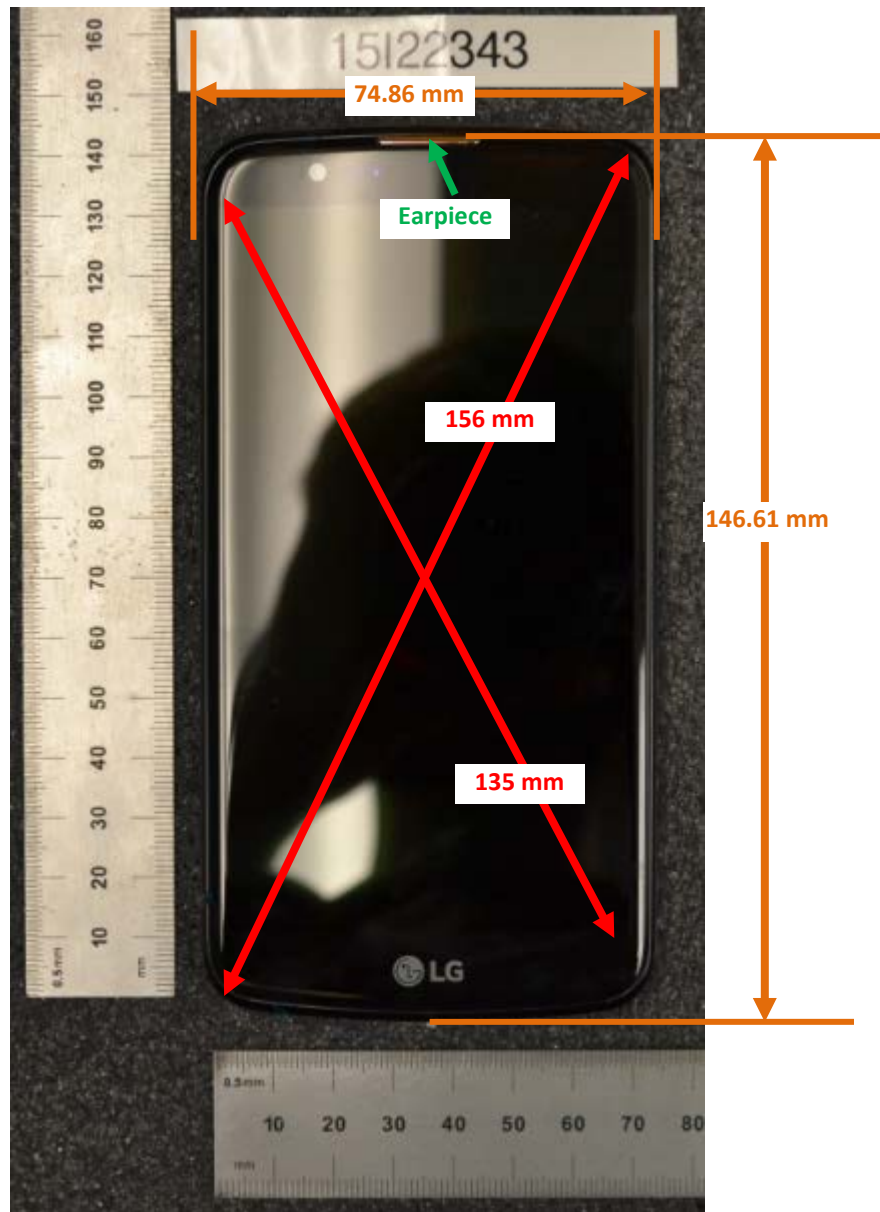


DUT and SAR Set-up Photos

Overall Dimensions



Front View of the DUT



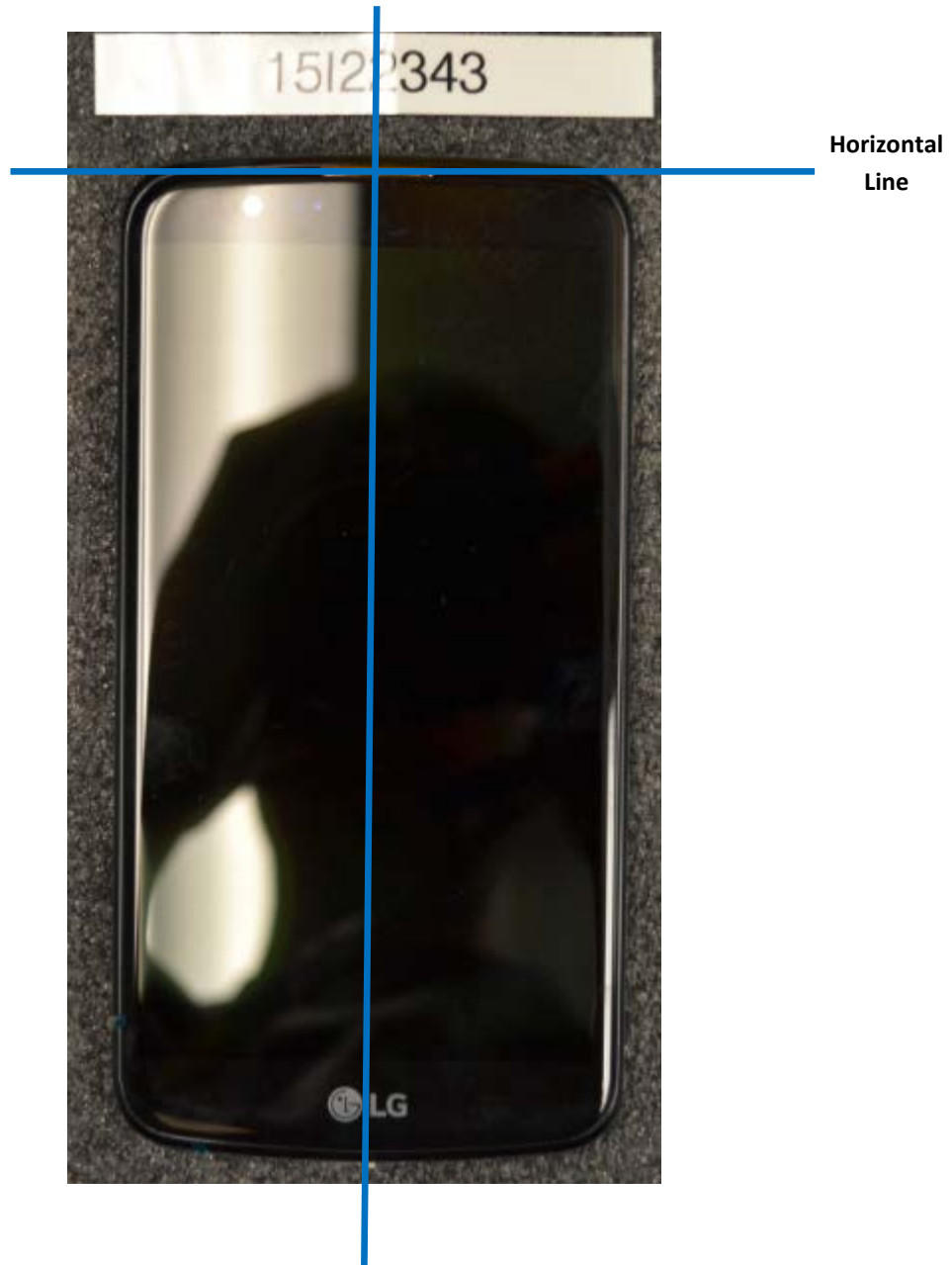
Rear View of the DUT



Setup Photos

Handset Vertical and Horizontal Reference Lines

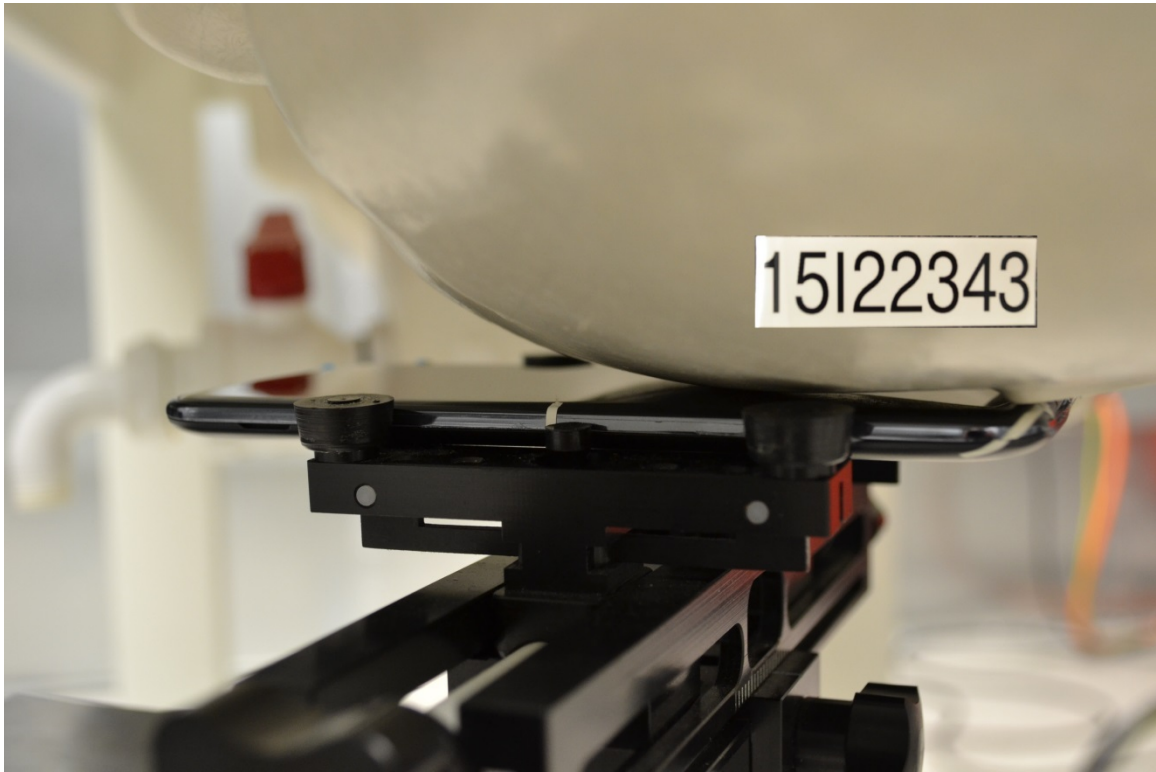
Vertical
Center Line



Horizontal
Line

Head Exposure Conditions

Left Touch



Left Tilt (15°)



Right Touch

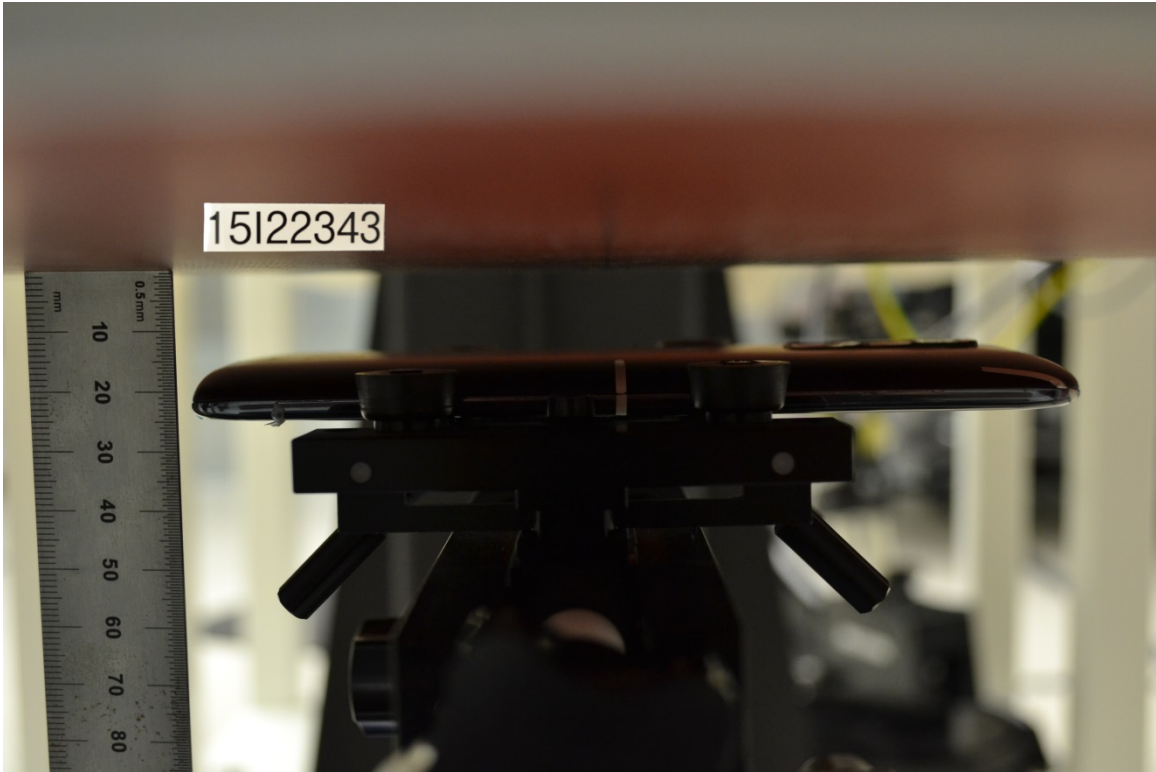


Right Tilt (15°)

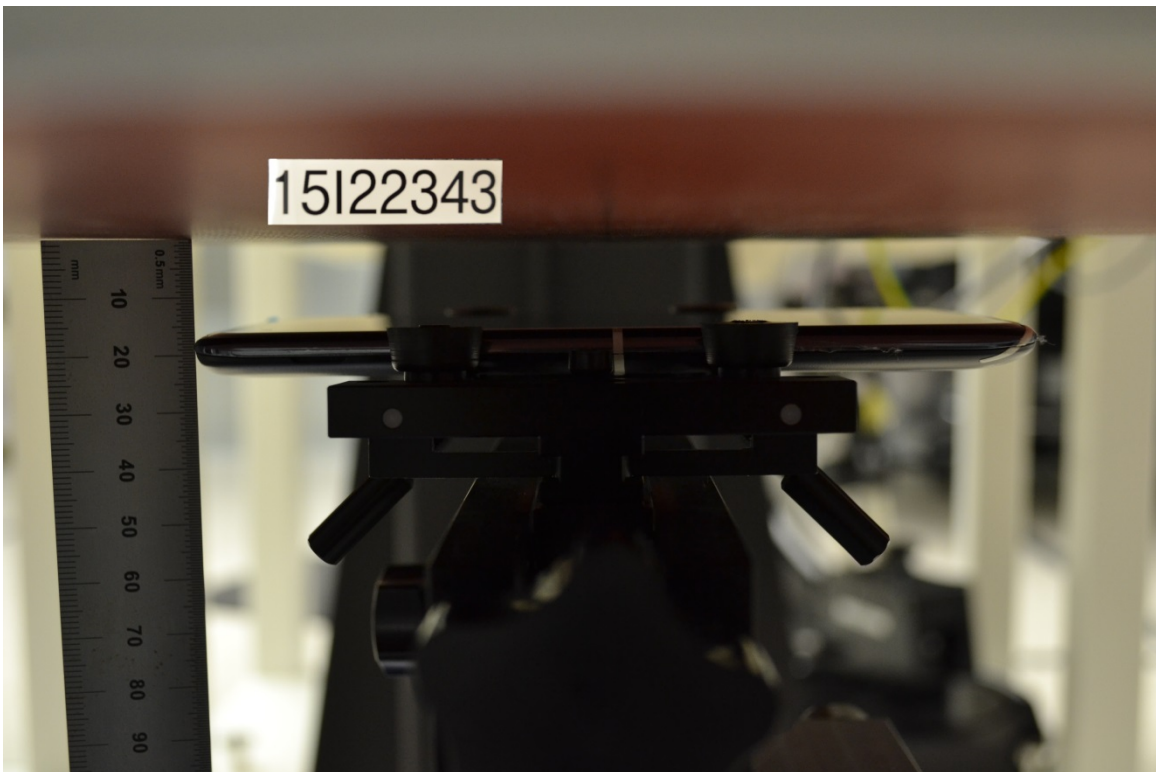


Body-worn Accessory

Rear

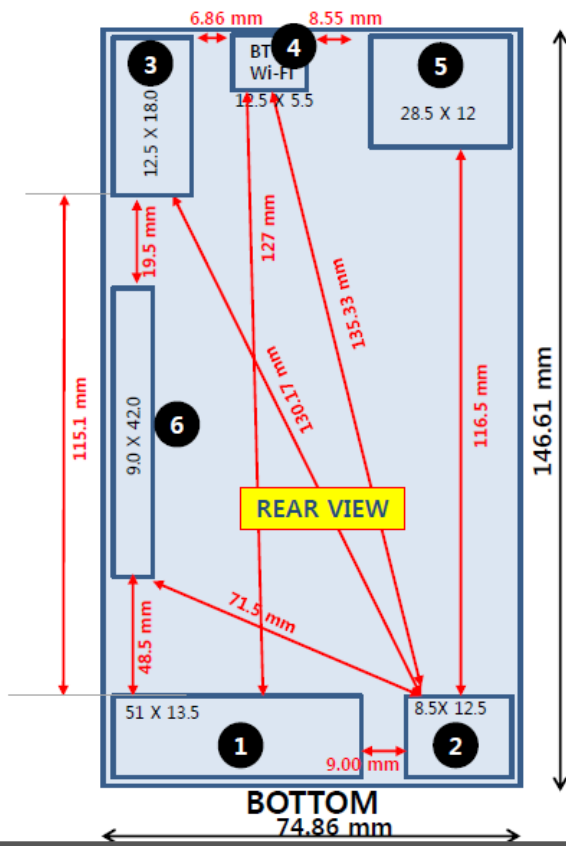


Front



Antenna Dimensions & Separation Distances

**L61AL Antenna Distance
TOP**



Antenna	Mode	Band
①	GSM	850 Tx, Rx
	GSM	900 Tx, Rx
	WCDMA	B5 Tx, Rx
	LTE	Band 5 Tx, Rx
	LTE	Band 17 Tx, Rx
②	GSM	PCS Tx, Rx
	GSM	DCS Tx, Rx
	WCDMA	B2 Tx, Rx
	LTE	B2 Tx, Rx
	LTE	B4 Tx, Rx
③	GNSS/GPS	1.574~1.6GHz
④	Bluetooth	2.4GHz
	Wi-Fi	2.4GHz
⑤	WCDMA	B2 2 nd Rx
	WCDMA	B5 2 nd Rx
	LTE	Band 2 2 nd Rx
	LTE	Band 4 2 nd Rx
	LTE	Band 5 2 nd Rx
⑥	LTE	Band 17 2 nd Rx