

Congratulations on your purchase of the advanced and compact LG L38C phone by LG, designed to operate with the latest digital mobile communication technology.

Some of the contents in this manual may differ from your phone depending on the software of the phone or your service provider.

- This handset is not recommended for the visually impaired because of its touch-screen keypad.
- Copyright ©2012 LG Electronics, Inc. All rights reserved. LG and the LG logo are registered trademarks of LG Group and its related entities. All other trademarks are the property of their respective owners.
- Google™, Google Maps™, Gmail™, YouTube™, Google Talk™ and Play Store™ are trademarks of Google, Inc.



About this user manual

Please read this user manual carefully before you use your phone and keep it handy for future reference.

Should your phone fail to operate correctly, refer to FAQ section.

- Some features and services may vary by area, phone, carrier, plan and version of phone software.
- Screen displays and illustrations on this user manual may differ from those you see on the actual phone.
- Designs and specifications of the phone and other accessories are subject to change without any notice.

Battery Information and Care

- Always unplug the charger from the wall socket after the phone is fully charged to save unnecessary power consumption of the charger.

Consumer Information on SAR

(Specific Absorption Rate) This model phone meets the Government's requirements for exposure to radio waves. Your wireless phone is a radio transmitter and receiver. It is designed and manufactured not to exceed the emission limits for exposure to radio frequency (RF) energy set by the Federal Communications Commission (FCC) of the U.S. Government. These FCC exposure limits are derived from the recommendations of two expert organizations, the National Council on Radiation Protection and Measurement (NCRP) and the Institute of Electrical and Electronics Engineers (IEEE). In both cases, the recommendations were developed by scientific and engineering experts drawn from industry, government, and academia after extensive reviews of the scientific literature related to the biological effects of RF energy.

The exposure limit for wireless mobile phones employs a unit of measurement known as the Specific Absorption Rate, or SAR. The SAR is a measure of the rate of absorption of RF energy by the human body expressed in units of watts per kilogram (W/kg). The FCC requires wireless phones to comply with a safety limit of 1.6 watts per kilogram (1.6 W/kg). The FCC exposure limit incorporates a substantial margin of safety to give additional protection to the public and to account for any variations in measurements.

Tests for SAR are conducted using standard operating positions specified by the FCC with the phone transmitting at its highest certified power level in all tested frequency bands. Although SAR is determined at the highest certified power level, the actual SAR level of the phone while operating can be well below the maximum value. Because the phone is designed to operate at

multiple power levels to use only the power required to reach the network, in general, the closer you are to a wireless base station antenna, the lower the power output.

Before a phone model is available for sale to the public, it must be tested and certified to the FCC that it does not exceed the limit established by the government adopted requirement for safe exposure. The tests are performed in positions and locations (e.g., at the ear and worn on the body) as required by the FCC for each model.

The FCC has granted an Equipment Authorization for this model phone with all reported SAR levels evaluated as in compliance with the FCC RF emission guidelines.

SAR information on this model phone is on file with the FCC and can be found under the Display Grant section of <http://www.fcc.gov/oet/ea/fccid/> after searching on FCC ID.

To find information that pertains to a particular model phone, this site uses the phone FCC ID number which is usually printed somewhere on the case of the phone. Sometimes it may be necessary to remove the battery pack to find the number. Once you have the FCC ID number for a particular phone, follow the instructions on the website and it should provide values for typical or maximum SAR for a particular phone.

Additional information on Specific Absorption Rates (SAR) can be found on the Cellular Telecommunications Industry Association (CTIA) website at <http://www.ctia.org/>

*In the United States and Canada, the SAR limit for mobile phones used by the public is 1.6 watts/kg (W/kg) averaged over one gram of tissue. The standard incorporates a substantial margin of safety to give additional protection for the public and to account for any variations in measurements.

Bodily Contact During Operation

This device was tested for typical use with the back of the phone kept 0.59 inches (1.5 cm) from the body. To comply with FCC RF exposure requirements, a minimum separation distance of 0.59 inches (1.5 cm) must be maintained between the user's body and the back of the phone. Third-party belt-clips, holsters, and similar accessories containing metallic components should not be used. Avoid the use of accessories that cannot maintain 0.59 inches (1.5 cm) distance between the user's body and the back of the phone and have not been tested for compliance with FCC RF exposure limits.

Part 15.21 statement

Changes or modifications that are not expressly approved by the manufacturer could void the user's authority to operate the equipment.

Part 15.105 statement

This equipment has been tested and found to comply with the limits for a class B digital device, pursuant to Part 15 of the FCC rules. These limits are designed to provide reasonable protection against harmful interference in a residential installation. This equipment generates, uses, and can radiate radio frequency energy and, if not installed and used in accordance with the instructions, may cause harmful interference to radio communications.

However, there is no guarantee that interference will not occur in a particular installation. If you experience interference with reception (e.g., television), determine if this equipment is causing the harmful interference by turning the equipment off and then back on to see if the interference is affected. If necessary, try correcting the interference by one or more of the following measures:

- Reorient or relocate the receiving antenna.
- Increase the separation between the equipment and receiver.
- Connect the equipment into an outlet on a circuit different from that to which the receiver is connected.

- Consult the dealer or an experienced radio/TV technician for help.


Important notice

Please check to see whether any problems you encountered with your phone are described in this section before taking the phone in for service or calling a service representative.

1. Phone memory

When available space in your phone memory is less than 10%, your phone cannot receive new messages. You need to check your phone memory and delete some data, such as applications or messages, to make more memory available.

Managing applications

1. From the Home screen, touch the **Applications Key** , then select **Settings > Applications > Manage applications**.
2. Touch one of the tabs, scroll to and select the application you want to uninstall.
3. Touch **Uninstall**, then touch **OK** to uninstall the application you selected.

2. Optimising battery life


Extend your battery's life between charges by turning off features you don't need to run constantly in the background. You can monitor how applications and system resources consume battery power.

Extending your battery's life


- Turn off radio communications you are not using. If you are not using Wi-Fi, Bluetooth or GPS, turn them off.
- Reduce screen brightness and set a shorter screen timeout.

- Turn off automatic syncing for Gmail, Calendar, Contacts and other applications.
- Some applications you have downloaded may cause your battery life to be reduced.

Checking the battery charge level

1. From the Home screen, touch the **Applications Key** , then select **Settings > About phone > Status**.
2. The battery status (Charging, Not charging) and level (percentage charged) is displayed at the top of the screen.

Monitoring and controlling what uses the battery

1. From the Home screen, touch the **Applications Key** , then select **Settings > About phone > Battery use**.
2. Battery usage time is displayed at the top of the screen. It lists applications or services using battery power, from greatest amount to least.

3. Installing an open source operating system

If you install and use an open source operating system (OS) on your phone rather than using the OS provided by the manufacturer, your phone may malfunction.

! WARNING: If you install and use an OS other than the one provided by the manufacturer, your phone is no longer covered by the warranty.

⚠ WARNING: To protect your phone and personal data, only download applications from trusted sources, such as Play Store. If there are improperly installed applications on your phone, your phone may not work normally or a serious error may occur. You must uninstall those applications and all their data and settings from the phone.

4. Using unlock pattern

Set unlock pattern to secure your phone. This opens a set of screens that guide you through how to draw a screen unlock pattern.

Caution: Create a Google account before setting an unlock pattern.

⚠ WARNING: Precautions to take when using pattern lock.

It is very important to remember the unlock pattern you set. You will not be able to access your phone if you use an incorrect pattern 5 times. You have 5 opportunities to enter your unlock pattern, PIN or password. If you have used all 5 opportunities, you can try again after 30 seconds.

When you can't recall your unlock Pattern, PIN, or Password:

If you have forgotten pattern: If you logged in to your Google account on the phone but failed to enter the correct pattern 5 times, touch the **Forgot pattern?** button. You are then required to log in with your Google account to unlock your phone.





If you have not created a Google account on the phone or you forgot it, you have to perform a Hard reset.

If you have forgotten PIN or Password: If you forgot your PIN or Password, you need to do Hard reset.

Caution: If you perform a hard reset, all user applications and user data are deleted.

5. Using the hard reset

If it does not restore to the original condition, use hard reset to initialise your phone.

When the phone is turned off, press and hold the **Home Key**  + **Volume Down Key**  + **Power/Lock Key** . When the screen shows the LG logo, release the **Power/Lock Key** .

After the screen shows the hard reset screen, release the other keys.

Leave your phone for at least a minute while it performs the hard reset, then your phone will be turned on.


Caution: If you perform a hard reset, all user applications and user data are deleted. This cannot be reversed. Remember to back up any important data before performing a hard reset.

6. Connecting to Wi-Fi networks

To use Wi-Fi on your phone, you need to access a wireless access point. Some access points are open and you can simply connect to them. Others are hidden or use security features; you must configure your phone to be able to connect to them.

Turn off Wi-Fi when you're not using it to extend the life of your battery.


Turning Wi-Fi on and connecting to a Wi-Fi network


1. From the Home screen, touch the **Applications Key**  then select **Settings > Wireless & networks > Wi-Fi settings**.
2. Touch **Wi-Fi** to turn it on and begin scanning for available Wi-Fi networks.
 - A list of available Wi-Fi networks is displayed. Secured networks are indicated by a lock icon.
3. Touch a network to connect to it.
 - If the network is open, you are asked to confirm that you want to connect to that network by touching **Connect**.
 - If the network is secure, you're asked to enter a password or other credentials. (Ask your network administrator for details)
4. The Status Bar displays icons that indicate Wi-Fi status.

7. Opening and switching applications


Multitasking is easy with Android because you can keep more than one application running at the same time. There's no need to quit an application before opening another. Use and switch between several open applications. Android manages each application, stopping and starting them as needed to ensure that idle applications don't consume resources unnecessarily.

Stopping applications

1. From the Home screen, touch the **Applications Key**  then select **Settings > Applications > Manage applications > select Running**.
2. Scroll to the desired application and touch **Stop > OK** to stop it.

TIP! To return to recent applications, press and hold the **Home Key** . The screen then displays a list of the applications you used recently.

8. Transferring music, photos and videos using USB mass storage devices

1. From the Home screen, touch the **Applications Key**  then select **Settings > Storage** to check out the storage media. (If you want to transfer files from or to a memory card, insert a memory card into the phone.)
2. Connect the phone to your PC using the USB cable.
3. The **USB Mass Storage** mode screen will appear. If you touch **Turn on**

USB storage, your device connection will be recognized by your PC.

4. Open the removable memory folder on your PC. You can view the mass storage content on your PC and transfer the files.
5. Copy the files from your PC to the drive folder.
6. When you are finished, touch **Turn off USB storage** to disconnect the phone.

9. Hold your phone straight up

Hold your mobile phone straight up, as you would a regular phone. The LG L38C has an internal antenna. Be careful not to scratch or damage the back of the phone, as that causes loss of performance.

While making/receiving calls or sending/receiving data, avoid holding the lower part of the phone where the antenna is located. Doing so may affect call quality.

10. When the screen freezes



If the screen freezes or the phone does not respond when you try to operate it:

Remove the battery, reinsert it, then turn the phone on. If it still does not work, please contact the service center.

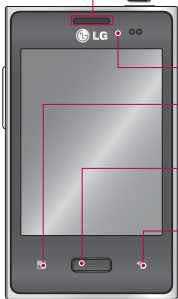
11. Do not connect your phone when you turn on/off your PC.

Make sure you disconnect the USB cable between your phone and PC; leaving it connected might cause errors on your PC.

Getting to know your phone

To turn on your phone, press and hold the **Power/Lock Key**  for 3 seconds. To turn off the phone, press and hold the **Power/Lock Key**  for 3 seconds, then touch **Power off** and **OK**.

Speaker/Receiver



Power/Lock key

Switch your phone on/off by pressing and holding this key. Turn off and lock the screen.

Proximity sensor

Menu key

Check what options are available.

Home key

Return to home from any screen.

Back key

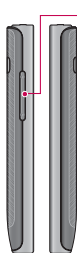
Return to the previous screen.

NOTE: Proximity sensor

When receiving and making calls, the proximity sensor automatically turns the backlight off and locks the touch keypad by sensing when the phone is near your ear. This extends battery life and prevents the touch keypad from activating unintentionally during calls.

! WARNING:

Placing a heavy object on the phone or sitting on it can damage its LCD and touch screen functions. Do not cover the protective film on the LCD's proximity sensor. This may cause the sensor to malfunction.



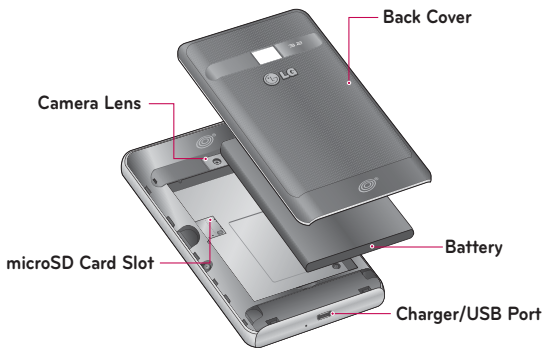
Volume keys

- **On the home screen:** Control ringer volume.
 - **During a call:** Control your In-Call volume.
 - **When playing a track:** Control volume continuously.
- TIP!** Press and hold the Volume UP and Volume Down keys for one second to use the **QuickMemo** function.

Stereo Earphone Jack

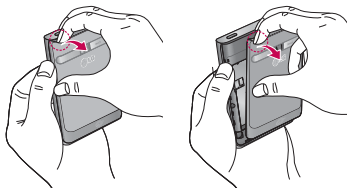


Power/Lock Key

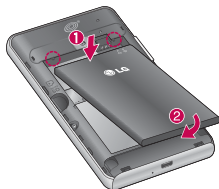


Installing the battery

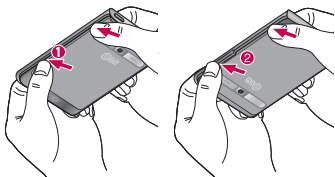
1. To remove the back cover, hold the phone in your hand firmly. With the other hand, firmly press your thumb on the back cover. Then insert your fingertip under the ledge at the top of the phone to gently lift back the cover to remove it.



2. Insert the battery by aligning the gold contacts on the phone and the battery.



3. Align the back cover over the battery compartment and press it down until it locks into place.



Charging your phone

Insert the charger into the Charger/USB Port, then plug it into an electrical outlet.



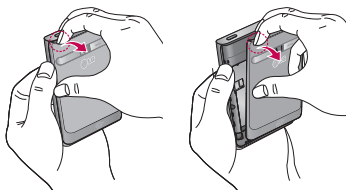
NOTE: The battery must be fully charged initially to improve battery lifetime.

Installing the memory card

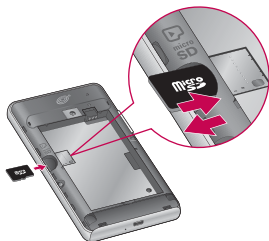
NOTE: The LG L38C supports memory cards up to 32 GB.

To insert a memory card


1. Turn the phone off before inserting or removing a memory card. Remove the back cover.



2. Insert the memory card into the slot. Make sure the gold contact area is facing downwards.



Removing a memory card


1. To remove the microSD card you must first unmount it. From the Home screen, touch the **Applications Key**  > **Settings** > **Storage** > **Unmount SD card** > **OK**.
2. Remove the back cover and locate the microSD card slot.
3. Gently pull the microSD card out to remove it.

! WARNING: Do not insert or remove the memory card without unmounting it first. Doing so may damage the memory card as well as your phone, and the data stored on the memory card may be corrupted.

Formatting the memory card

Your memory card may already be formatted. If it isn't, you must format it before you can use it.

NOTE: All files on the card are deleted when you format the card.

1. From the Home screen, touch the **Applications Key**  to open the applications screen.
2. Touch **Settings** > **Storage**.
3. Touch **Unmount SD card** and touch **OK** to confirm.
4. Touch **Erase SD card**, then confirm your choice.
5. If you have set a pattern lock, input the pattern lock then select **Erase everything**. The card is then formatted and ready to use.

NOTE: If there is content on your memory card, the folder structure may be different after formatting since all the files will be deleted.

Your Home screen

Touch screen tips

Here are some tips on how to navigate around your phone.

Touch – To choose a menu/option or open an application, touch it.

Touch and hold – To open an options menu or grab an object you want to move, touch and hold it.


Drag – To scroll through a list or move slowly, drag across the touch screen.

Flick – To scroll through a list or move quickly, flick across the touch screen (drag quickly and release).

NOTE:

- To select an item, touch the center of the icon.
- Do not press too hard; the touch screen is sensitive enough to pick up a light, firm touch.
- Use the tip of your finger to touch the option you want. Be careful not to touch any other keys.

Lock your phone

When you are not using the LG L38C, press the **Power/Lock Key**  to lock your phone. This helps prevent accidental presses and saves battery power.

Also, if you do not use the phone for a while, the Home screen or another screen you are viewing is replaced with the lock screen to conserve battery power.

If there are any programs running when the screen locks, they may be still running in Lock mode. It is recommended that you exit all programs before entering the Lock mode to avoid unnecessary charges (e.g. phone calls, Web access and data communications).

Setting an unlock pattern: you can draw your own unlock pattern by connecting the dots.

If you set a pattern when the screen locks, you will have to draw the pattern that you set.

Tip: When you set an unlock pattern, it is recommended to create or sign into your Google account first in order to successfully unlock the phone if you forget your unlock pattern.




Caution: If you incorrectly enter the pattern more than 5 times in a row, you cannot unlock the phone. In this case, refer to the Step 4 under **Important Notice**.

Unlock screen

Whenever your LG L38C is not in use, it returns to the lock screen. Slide your finger from bottom to top to unlock the screen.

Silent mode

Drag the Status Bar down to open the Notifications panel. Then touch

Ringer mode  to change to **Vibrate mode**  (if the Vibrate option is set). Otherwise, it will change to **Silent mode** .

Home screen panels

Simply swipe your finger to the left or right to view the Home screen panels. You can customize each panel with widgets, shortcuts (to your favourite applications), folders and wallpaper.

NOTE: Some screen images may be different depending on your phone provider. In your Home screen, you can view Quick Keys at the bottom of the screen. The Quick Keys provide easy, one-touch access to the functions you use the most.



Touch the **Phone Key** to display the dial pad to make a call.



Touch the **Contacts Key** to open the contact list.



Touch the **Messaging Key** to open the Messaging application and create messages.




Touch the **Applications Key** to view all your installed applications.

To open the desired application, simply touch the icon in the applications list.


NOTE: Preloaded applications may differ according to your phone's software or your service provider.

Adding widgets to your Home screen

You can customize your Home screen by adding shortcuts, widgets, folders or wallpapers to it. For more convenience using your phone, add your favourite widgets to the Home screen.



1. From the Home screen, touch the **Menu Key**  and select **Add**. Or touch and hold the empty part of the Home screen.
2. In the **Add to Home screen** menu, touch the type of item you want to add.
3. For example, select **Folders** from the list and touch the type of folder you want to add.
4. The new folder icon is displayed on the Home screen. Drag it to the desired location on the desired panel, then take your finger off the screen.

TIP! To add an application icon to the Home screen from the Applications screen, touch and hold the application you want to add.

TIP! To remove an application icon from the Home screen, touch and hold the icon you want to remove, then drag it to .

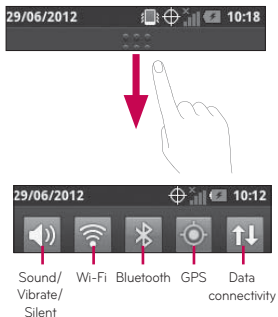
NOTE: You cannot delete preloaded applications. (Only their icons can be deleted from the screen.)

Returning to recently-used applications

1. Touch and hold the **Home Key** . The screen displays a pop-up with icons of applications you used recently.
2. Touch an icon to open the application. Or touch the **Back Key**  to return to the current application.

Notifications panel

The Notifications panel runs across the top of your screen.



Touch and slide the Status Bar down with your finger to open the Notifications panel.

Or, from the Home screen, touch the **Menu Key** and select **Notifications**. Here you can check and manage sound, Wi-Fi, Bluetooth and GPS as well as other notifications.















Viewing the Status Bar















The Status Bar uses different icons to display phone information such as signal strength, new messages, battery life and active Bluetooth and data connections.





Below is a table explaining the meaning of icons you're likely to see in the Status Bar.



[Status Bar]

Icon	Description
	No signal
	Airplane mode
	Connected to a Wi-Fi network
	Wired headset
	Call in progress
	Call hold
	Speakerphone
	Phone microphone is muted
	Missed call
	Bluetooth is on
	Connected to a Bluetooth device
	System warning
	Alarm is set
	New voicemail

Icon	Description
	Ringer is silenced
	Vibrate mode
	Battery fully charged
	Battery is charging
	Data in and out
	Phone is connected to PC via USB cable
	Downloading data
	Uploading data
	GPS is acquiring
	Receiving location data from GPS
	3 more notifications not displayed
	Data is syncing
	Download finished
	New Gmail



Icon	Description
	New Google Talk message
	New message
	Song is playing
	Upcoming event

On-screen keyboard

You can enter text using the on-screen keyboard. The on-screen keyboard appears automatically on the screen when you need to enter text. To manually display the keyboard, simply touch a text field where you want to enter text.

Using the keypad & entering text

 Touch once to capitalize the next letter you type. Double tap for all caps.


  Touch to switch to the numeric and symbol keyboard. You can also touch and hold this key to view the Settings menu.

 Touch to insert an emoticon when writing a message.

 Touch to enter a space.

 Touch to create a new line in the message field.

 Touch to delete the previous character.

 Touch to hide the on-screen keyboard.

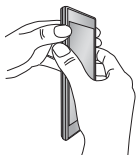
Entering accented letters

You can also enter special characters (e.g. "á") while using the on-screen keyboard.

For example, to input "á", touch and hold the "a" key until the zoom-in key grows bigger and displays extra characters. Then select the special character you want.

QuickMemo

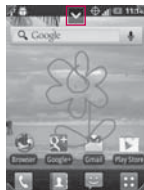
Use **QuickMemo** to practically and efficiently create memos during a call, with a saved picture or on the current phone screen.





1 Enter the **QuickMemo** screen by pressing both the Volume Up and Volume Down Keys for one second on the screen you want to capture.



2 Select the desired menu option from **Pen type**, **Color**, **Eraser**, and create a memo.





3 Touch  from the Edit menu and select  to save the memo with the current screen.

NOTE: Please use a fingertip while using the QuickMemo function. Do not


Using the QuickMemo options

While using the QuickMemo function, you can easily use the QuickMenu options.

 - Select if you want to use the background screen or not.

 - Select the pen type and the color.

 - Erase the memo that you created.

 - Set the location where you want to save the memo.

 - Save the memo with the current screen.

 - Send or share the current QuickMemo to others.

Viewing the saved QuickMemo

Touch **Gallery** and select the QuickMemo album.


Google Account Set-up

When you first turn on your phone, you have the opportunity to activate the network, to sign into your Google account and how you want to use some Google services.

To set up your Google account :

* Sign into a Google account from the prompted set up screen.

OR

* From the Home screen, touch the **Applications Key** , select a Google application, such as **Gmail**, and touch **Next** > **Create** to create a new account.

If you have a Google account, enter your e-mail address and password, then touch **Sign in**.

Once you have set up your Google account on your phone, your phone automatically synchronizes with your Google account on the Web.

Your contacts, Gmail messages, calendar events and other information from these applications and services on the web are synchronized with your phone. (This depends on your synchronization settings.)

After signing in, you can use Gmail and take advantage of Google services on your phone.

Wi-Fi

With Wi-Fi, you can use high-speed Internet access within the coverage of the wireless access point (AP).


Enjoy wireless Internet using Wi-Fi, without extra charges.

Turning on Wi-Fi

From the Home screen, open the Notifications panel and touch .

Or from the Home screen, touch the **Applications Key**  > **Settings** > **Wireless & networks** > **Wi-Fi** .

Connecting to Wi-Fi

Choose the Wi-Fi network you want to connect to. If you see , you need to enter a password to connect.

NOTE:

- If you are outside the Wi-Fi coverage area and choose 3G connection, additional charges may apply.
- If your phone goes into sleep mode when connected to Wi-Fi, the Wi-Fi connection is automatically disabled.
- In this case, if your phone has access to 3G data, it may connect to the 3G network automatically and additional charges may apply.
- The LG L38C supports WEP, WPA/WPA2-PSK and 802.1x EAP security. If your Wi-Fi service provider or network administrator sets encryption for network security, enter the key into the pop-up window. If encryption is not set, this pop-up window is not shown. Obtain the key from your Wi-Fi service provider or network administrator.

Connecting to Bluetooth Devices





Bluetooth is on



Connected to a Bluetooth device



To turn Bluetooth on or off

1. From the Home screen, touch the **Menu Key** .
2. Touch **Settings > Wireless & networks**.
3. Touch **Bluetooth**  to turn the function on or off.

Connecting to Virtual Private Networks

Virtual private networks (VPNs) allow you to connect to resources inside a secured local network, from outside that network.

To add a VPN

1. From the Home screen, press the **Menu Key** .
2. Touch **Settings > Wireless & networks > VPN settings**.
3. Touch **Add VPN**.
4. Touch the type of VPN to add.
5. In the screen that opens, follow the instructions from your network administrator to configure each component of the VPN settings.
6. Press the **Menu Key**  and touch **Save**.
The VPN will be added to the list on the VPN settings screen.



Connecting to Mobile Networks

When you buy your phone and sign up for service, your phone is configured to use your provider's mobile networks for voice calls and for transmitting data.

Different locations may have different mobile networks available. Initially, your phone is configured to use the fastest mobile network available for data. You can also configure your phone to access a different set of networks entirely, or to behave in specific ways when roaming.

To disable data when roaming

You can prevent your phone from transmitting data over other carriers' mobile networks when you leave an area that is covered by your carrier's networks. This is useful for controlling expenses if your cell plan doesn't include data roaming.


1. From the Home screen, touch the **Applications Key**  > **Settings** > **Wireless & networks** > **Mobile networks**.
2. Touch **Data roaming**  to remove the checkmark from the box. With **Data roaming** unchecked, you can still transmit data with a Wi-Fi connection.

Working With Secure Certificates

If your organization's VPN or Wi-Fi network relies on secure certificates, you must obtain the certificates and store them in your phone's secure credential storage before you can configure access to that VPN or Wi-Fi network on your phone.





For specific instructions, contact your network administrator.


To install a secure certificate from the microSD card

1. Copy the certificate from your computer to the root (that is, not in a folder) of the microSD card.
2. From the Home screen, touch the **Menu Key** .
3. Touch **Settings > Location & security**.
4. Touch **Install from SD card**.
5. Touch the file name of the certificate to install.
Only the names of certificates that you have not already installed on your phone are displayed.
6. If prompted, enter the certificate's password and touch **OK**.
7. Enter a name for the certificate and touch **OK**.


Calls

Making a call


1. From the Home screen, touch the **Phone Key**  to open the keypad.
2. Enter the number using the keypad. To delete a digit, touch the **Clear Key** .
3. Touch the **Call Key**  to make a call.
4. To end a call, touch the **End Key** .

TIP! To enter “+” to make international calls, touch and hold .


Calling your contacts

1. From the Home screen, touch the **Contacts Key**  to open your contacts.
2. Scroll through the contact list or enter the first letter(s) of the contact you want to call in the **Search** field.
3. In the list, touch the contact which you want to call and touch the number or **Call** icon to make a call.

Answering and rejecting a call

When the screen is locked and your phone rings, drag the **Answer** icon  to the right.

Drag the **Decline** icon  to the left to reject the incoming call.

When the screen is unlocked and your phone rings, tap the **Answer** icon  to answer the incoming call.

Tap the **Decline** icon  to reject the incoming call.






TIP! Excuse Msg

You can send a message quickly using this function. This is useful if you need to reply the message during a meeting.

Adjusting call volume

To adjust the in-call volume during a call, use the **Volume Keys** on the left side of the phone.

Making a second call

1. During your first call, touch **Menu Key**  > **Add call** .
2. Dial the number or search your contacts.
3. Touch the **Call Key**  to connect the call.
4. Both calls are displayed on the call screen. Your first call will be put on hold while the second call is active.
5. Touch **Merge call**  to make a conference call.
6. To end active calls, touch the **End Key** .


NOTE: You are charged for each call you make.

Viewing your call logs

From the Home screen, touch the **Contacts Key**  and choose the **Call log** tab.


View a complete list of all dialed received and missed voice calls.

TIP! Touch any call log entry to view the date, time and duration of the call.

TIP! Touch the **Menu Key** , then touch **Delete all** to delete all the recorded items.

Call settings


You can configure phone call settings and other special features offered by your carrier.

1. From the Home screen, touch the **Applications Key**  to open the applications screen.
2. Touch **Settings**.
3. Touch **Call settings** and choose the options that you want to adjust.





Contacts

Add contacts to your phone and synchronize them with the contacts in your Google account or other accounts that support contact syncing.

Searching for a contact

1. From the Home screen, touch the **Contacts Key**  to open your contacts.
2. Touch the **Search** field at the top and enter the contact name using the keyboard.


Adding a new contact

1. From the Home screen, touch the **Phone Key** , enter the new contact's number, then touch the **Menu Key** . Touch **Add to contacts** and then **Create new contact**.
2. If you want to add a picture to the new contact, touch . Choose from **Capture picture** or **Pick from Gallery**.
3. Select the contact type by touching .
4. Touch a category of contact information and enter the details about your contact.
5. Touch **Save**.


Favorite contacts

You can classify frequently called contacts as favorites.

Adding a contact to your favorites

1. From the Home screen, touch the **Contacts Key**  to open your contacts.
2. Touch a contact to view its details.
3. Touch the star to the right of the contact's name. The star turns gold.

Removing a contact from your favorites list


1. From the Home screen, touch the **Contacts Key**  to open your contacts.
2. Touch the **Groups** tab, select **Favorites** at the top of the list and choose a contact to view its details.
3. Touch the gold star to the right of the contact's name. The star turns grey and the contact is removed from your favourites.

Messaging


Messaging

Your LG L38C combines SMS and MMS into one intuitive, easy-to-use menu.

Sending a message

1. From the Home screen, touch the **Messaging Key**  and then touch **New message**.
2. Enter a contact name or contact number in the **To** field. As you enter the contact name, matching contacts appear. You can touch a suggested recipient. You can add multiple contacts.

NOTE: You will be charged for a text message for every person you send the message to.

3. Touch the message field and start to compose your message.
4. Touch the **Menu Key**  to open the options menu. Choose from **Add subject, Discard, Attach, Insert smiley** and **All messages**.
5. Touch **Send** to send your message.
6. The message screen opens. Responses appear on the screen. As you view and send additional messages, a message thread is created.

! WARNING: The 160-character limit may vary from country to country depending on how the SMS is coded and in what language.

! WARNING: If an image, video or audio file is added to an SMS, it will be automatically converted into an MMS, and you will be charged accordingly.

NOTE: When you get an SMS message during a call, there will be a ring notification.

Threaded box

Messages (SMS, MMS) exchanged with another party can be displayed in chronological order so that you can conveniently see an overview of your conversation.



Using Smilies

Liven up your messages using Smilies.

When writing a new message, touch the **Menu Key** , then **Insert smiley**.

Changing your message settings

Your LG L38C message settings are predefined, so you can send messages immediately. You can change the settings based on your preferences.

Touch **Messaging**  in the home screen and touch the **Menu Key**  > **Settings**.

! WARNING: In this mode, the MMS Client device guides the user in creating and sending messages with content belonging to the Core MM Content Domain. This guidance is provided through warning dialogs.

Email

Opening Email and the Accounts Screen

You can use the **Email** application to read email from services other than Gmail. The Email application supports the following account types: POP3, IMAP and Exchange.

Managing an email account

From the Home screen, touch the **Applications Key**  > **Email**, then select the email service provider.

A setup wizard opens to help you add an email account.

The Accounts screen

The Accounts screen lists your Combined Inbox and each of your email accounts.

1. Open the **Email** application. If you're not on the Account screen, touch the **Menu Key**  and touch **Accounts**.

2. Select the Email service provider.



- Touch to open your Combined Inbox, with messages received to all of your accounts.



- Touch to open a list of just your starred messages.



- Touch the folder icon to open the account's folders.

You can touch an account to view its Inbox. The account from which you send email by default is indicated with a checkmark.

To open your Combined Inbox




If you have configured Email to send and receive email from more than one account, you can view all messages sent to all accounts in your Combined Inbox.

1. Open the **Email** application.
2. Touch **Combined inbox** (in the Accounts screen). Messages in the Combined Inbox are color coded along their left sides, by account, using the same colors that are used for your accounts in the Accounts screen.


Only your account's most recent emails are downloaded to your phone. To download more (earlier) email messages, touch **Load more messages** at the bottom of the emails list.

Composing and Sending Email


To compose and send a message

1. While in the **Email** application, touch the **Menu Key**  and touch **Compose**.
2. Enter an address for the message's intended recipient. As you enter text, matching addresses are offered from your Contacts. Separate multiple addresses with commas.
3. Touch the **Menu Key**  and then touch **Add Cc/Bcc** to send copy or blind copy of the mail to other contacts/email addresses.
4. Enter the text of the message.
5. Touch the **Menu Key**  and touch **Add attachment** to send a file with the message.

6. Touch the **Send** button.

If you're not ready to send the message, touch the **Save as draft** button to save it in a **Drafts** folder. Touch a draft message in a **Drafts** folder to resume working on it. Your message will also be saved as a draft if you touch the **Back Key**  before sending it. Touch the **Discard** button to abandon and delete a message, including any saved drafts. If you aren't connected to a network, for example, if you're working in airplane mode, the messages that you send are stored in your **Outbox** folder until you're connected to a network again. If it contains any pending messages, the **Outbox** is displayed on the Accounts screen.

Please note that messages sent using a Microsoft Exchange account will not be located on the phone; they will, however, be located on the Exchange server itself.



If you want to see your sent messages in the **Sent** folder, touch the **Menu Key**  and touch **Folders**. Then touch the **Sent** folder.

TIP! When a new email arrives in the inbox, you will receive a notification by sound or vibration.

Working with Account Folders

Each account has **Inbox**, **Outbox**, **Sent**, and **Drafts** folders. Depending on the features supported by your account's service provider, you may have additional folders.

Adding and Editing email Accounts

1. To add an email account, from the Home screen touch the **Applications Key**  and select **Email**.
2. Select an email provider and enter the account settings.
3. If an email account is already set up, you need to touch the **Menu Key**  then tap **Add account** from Accounts screen.
4. Enter a name for the account, confirm how you want your name to appear in outgoing mail, then touch the **Done** button.

To change an account's settings

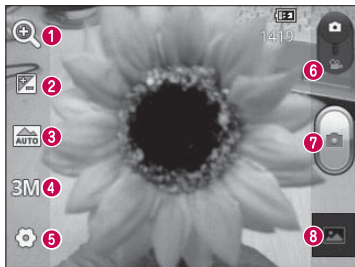
1. Open the Accounts screen.
2. Touch and hold the account whose settings you want to change. In the menu that opens, touch **Account settings**.

To delete an email account

1. Open the Accounts screen.
2. Touch and hold the account you want to delete.
3. Touch **Remove account** in the menu that opens.
4. Touch the **OK** button in the dialog box to confirm that you want to delete the account.


Camera

Getting to know the viewfinder






- 1 Zoom** - Zoom in or zoom out. Alternatively you can use the Volume Keys.
- 2 Brightness** - This defines and controls the amount of sunlight entering the image. Slide the brightness indicator along the bar towards "-" to lower the brightness of the image or towards "+" to increase it.
- 3 Scene mode** - Choose from **Auto**, **Portrait**, **Landscape**, **Sports**, **Sunset** and **Night**.
- 4 Image size** - Touch to set the size (in pixels) of the picture you take.
- 5 Settings** - Touch this icon to open the advanced settings menu.
- 6 Video mode** - Slide this icon down to switch to video mode.
- 7 Capture** - Takes a photo.
- 8 Gallery** - Touch to view the last photo you captured. This enables you to access your Gallery and view saved photos from within camera mode.

Taking a quick photo

1. Open the **Camera** application.
2. Hold the phone horizontally and point the lens towards the subject you want to photograph.
3. Touch the **Capture** button .


Once you've taken the photo

If Auto review is set to On, your captured photo appears on the screen.

- Share** Touch to share your photo using **Bluetooth, Gmail, Google+, Messaging, Picasa** or any other application that supports sharing.
- Set as** Touch to use the image as a **Contact icon** or **Wallpaper**.
- Rename** Touch to edit the name of the picture just taken.
-  Touch to delete the image.
-  Touch to take another photo immediately. Your current photo is saved.
-  Touch to view the last photo you captured as well as the Gallery.

Using the advanced settings

In the viewfinder, touch **Settings**  to open all advanced options.

Change camera settings by scrolling through the list. After selecting the option, touch the **Back Key** .

ISO – The ISO rating determines the sensitivity of the camera's light sensor. The higher the ISO, the more sensitive the camera is. This is useful in darker conditions when you cannot use the flash.

White balance – White balance ensures that the white areas in your picture are realistic. To enable your camera to adjust the white balance correctly, you may need to determine the light conditions. Choose from **Auto**, **Incandescent**, **Sunny**, **Fluorescent** and **Cloudy**.

Color effect – Choose a color tone for your new photo.

Timer – The self-timer allows you to set a delay after the Capture button is pressed. Select **Off**, **3 secs**, **5 sec** or **10 secs**. This is ideal if you want to be in the photo.

Shutter sound – Select one of four shutter sounds.


Auto review – Allows you to view the image immediately after taking it.

Tag location – Activate to use your phone's location-based services. Take pictures wherever you are and tag them with the location. If you upload tagged pictures to a blog that supports geotagging, you can see the pictures displayed on a map.

NOTE: This function is only available when GPS is active.

Storage – Choose whether to save your photos to the **Internal memory** or **SD card**.

 – Restore all camera default settings.

 – Touch whenever you want to know how this function operates. This provides you with a quick guide.



TIP! When you exit the camera, some settings return to their defaults, such as white balance, color effect and timer . Check these before you take your next photo.

TIP! The Settings menu is superimposed over the viewfinder, so when you change elements of the image color or quality, you see a preview of the image change behind the Settings menu.

Viewing your saved photos

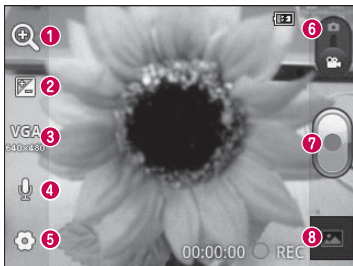
Access your saved photos while in **Camera** mode. Just touch the image preview at the bottom of the screen to access your Gallery.

TIP! Flick left or right to view other photos or videos.

-  - Touch to see a slideshow.
-  - Touch to share the contents or delete a photo. Touch **More** for the following options.
 - Details** – View the content's information.
 - Show on map** – Displays your image on a map (only available when Tag location is On).
 - Set as** – Set as a Contact icon or Wallpaper.
 - Crop** – Crop your photo. Move your finger across the screen to select the area.
 - Rotate Left** – Allows you to rotate the image to the left (counter-clockwise).
 - Rotate Right** – Allows you to rotate the image to the right (clockwise).




Video camera

Getting to know the viewfinder



- 1 Zoom** - Zoom in or zoom out. Alternatively you can use the Volume Keys.
- 2 Brightness** - This defines and controls the amount of sunlight entering the video. Slide the brightness indicator along the bar towards "-" to lower the brightness of the video or towards "+" to increase it.
- 3 Video size** - Touch to set the size (in pixels) of the video you record.
- 4 Audio recording** - Allows you to record a video with or without sound.
- 5 Settings** - Touch this icon to open the advanced settings menu.
- 6 Camera mode** - Slide this icon up to switch to camera mode.
- 7 Record** - Allows you to start recording a video.
- 8 Gallery** - Touch to view the last video you recorded. This enables you to access your Gallery and view your saved videos from within video mode.

Recording a quick video

1. Open the **Camera** application and slide the **Camera mode** button down. The icon changes to .
2. The video camera viewfinder appears on the screen.
3. Holding the phone horizontally, point the lens towards the subject you want to capture in your video.
4. Touch the **Record** button  button once to start recording.
5. A timer showing the length of the video is displayed at the bottom of the screen.
6. Touch the **Stop** button  on the screen to stop recording.

After recording a video

If Auto review is set to On, a still image representing your video will appear on the screen.

Play


Touch to play the video.

Share

Touch to share your video using **Bluetooth, Gmail, Messaging, YouTube** or any other application that supports sharing.

Rename



Touch to edit the name of the selected video.

 Touch to delete the video you just recorded. Confirm by touching **OK**. The viewfinder reappears.

 Touch to record another video right away. Your current video is saved.

 Touch to view the last recorded video as well as the Gallery.

Using the advanced settings


Using the viewfinder, touch **Settings**  to open all the advanced options. Adjust the video camera setting by scrolling through the list. After selecting the option, touch the **Back Key** .


White balance – White balance ensures that the white areas in your video are realistic. To enable your camera to adjust the white balance correctly, you may need to determine the light conditions. Choose from **Auto**, **Incandescent**, **Sunny**, **Fluorescent** and **Cloudy**.

Color effect – Choose a color tone to use for your new view.

Auto review – Allows you to view the video immediately after recording it.

Storage – Choose whether to save your video clip to the **Internal memory** or **SD card**.

 – Restore all video camera default settings.

 – Touch if you want to know how this function operates. This provides you with a quick guide.

Watching your saved videos

1. In the viewfinder, touch the image preview at the bottom of the screen.
2. Your video appears on the screen.
3. Touch the video once to start playing it.

Adjusting the volume when viewing a video

To adjust the volume of a video while it is playing, use the Volume Keys on the left-hand side of the phone.


Multimedia

Preloaded App

There are useful applications preloaded on the phone.

NOTE: Preloaded applications may differ according to your phone's software or your service provider.


Gallery

From the Home screen, touch the **Applications Key** , then select **Gallery**. All of your pictures and videos are displayed.


View mode

Open the Gallery application. Your albums are displayed in Folder view. Touch an album to display the images and videos in Grid view mode. If you touch a photo or video, it changes into Full view mode.






Timeline view

LG L38C Gallery provides a timeline view of your photos and videos. In grid view mode, drag  to the right and the date you took your photos is displayed, starting with the most recent. If you select a specific date, all the photos you took on that day are grouped.

Music

Your LG L38C has a music player that lets you play all your favourite tracks. To access the music player, from the Home screen touch the **Applications Key**  then touch **Music**.

Playing a song

1. From the Home screen, touch the **Applications Key**  and select **Music**.
2. Touch the **Songs** tab.
3. Select the song you want to play.
4. Touch  to pause the song.
5. Touch  to skip to the next song.
6. Touch  to go back to the beginning of the song. Touch  twice to return to the previous song.

To change the volume while listening to music, press the Volume Keys on the left-hand side of the phone.

Touch and hold any song in the list for the following options: **Play**, **Add to playlist**, **Use as ringtone**, **Delete**, **Details**, **Share** and **Search**.

NOTE: Music file copyrights may be protected by international treaties and national copyright laws.

Therefore, it may be necessary to obtain permission or a licence to reproduce or copy music.

In some countries, national laws prohibit private copying of copyrighted material. Before downloading or copying the file, check the national laws of the relevant country concerning the use of such material.

Transferring files using USB mass storage devices

To transfer files using USB devices

1. Connect the LG L38C to a PC using a USB cable.
2. The **USB Mass Storage** mode screen will appear. If you touch **Turn on USB storage**, your device connection will be recognized by your PC.
3. Open the removable memory folder on your PC. You can view the mass storage content on your PC and transfer the files.
4. Copy the files from your PC to the drive folder.
5. When you are finished, touch **Turn off USB storage** to disconnect the phone.




How to transfer music/video files to your phone

1. Connect your phone to the PC using the USB cable.
2. The **USB Mass Storage** mode screen will appear. If you touch **Turn on USB storage**, your device connection will be recognized by your PC.
3. Transfer music or video files from the PC to the phone's removable storage.
 - You can copy or move files from your PC to your phone's removable storage using a card reader.
 - If there is a video file with a subtitle file (*.srt file with the same name as the video file), place it in the same folder to display subtitles automatically when playing the video file.

- When downloading music or video files, copyrights must be secured. Note that corrupted files or files with incorrect extensions may damage your phone.

Sending data from your phone using Bluetooth

Sending data using Bluetooth You can use Bluetooth to send data by running a corresponding application, not from the Bluetooth menu as on most other mobile phones.



- * **Sending pictures:** Open the **Gallery** application, select a picture and touch **Menu > Share > Bluetooth**. Check whether Bluetooth is turned on, then select **Scan for devices**. Choose the device you want to send data to from the list.
- * **Exporting contacts:** Open the **Contacts** application. Touch the contact you want to share. Then touch the **Menu Key**  and select **Share > Bluetooth**. Check whether Bluetooth is turned on, then select **Scan for devices**. Choose the device you want to send data to from the list.
- * **Sending multi-selected contacts:** Open the **Contacts** application. To select more than one contact touch the **Menu Key**  and touch **Share**. Select the contacts you want to send or touch **Select all > Share > Bluetooth**. Check whether Bluetooth is turned on, then select **Scan for devices**. Choose the device you want to send data from the list.
- * **Connecting to FTP (only FTP server is supported on this handset):** From the Home screen, touch the **Applications Key**  > **Settings > Wireless**


& networks > Bluetooth settings. Select the **Discoverable** box so you can search for your phone on other devices. Find the FTP service and connect to the FTP server.

NOTE: If you want to search for this phone from other devices, from the Home screen, touch the **Applications Key**  **> Settings > Wireless & networks > Bluetooth settings.** Select the Discoverable box. The box is cleared after 120 seconds.



Utilities

Setting your alarm


1. From the Home screen, touch the **Applications Key**  and select **Clock**.
2. If you want to add a new alarm, touch  and select **Add alarm**.
3. Set the time to turn on the alarm.
4. Set **Repeat**, **Ringtone** or **Vibrate**, then add a **Label** to name the alarm.
Touch **Done**.
5. Touch **Done** to save the alarm.

NOTE: To change the alarm settings touch the **Menu Key**  from the alarms list and select **Settings**. The following options are available: **Alarm in silent mode**, **Alarm volume**, **Snooze duration** and **Side button behaviour**.

Using your calculator



1. From the Home screen, touch the **Applications Key**  and select **Calculator**.
2. Touch the number keys to enter numbers.
3. For simple calculations, touch the function you want (+, -, x or ÷) followed by =.
4. For more complex calculations, touch the **Menu Key** , touch the **Advanced panel**, then choose the desired functions.

Adding an event to your calendar

1. From the Home screen, touch the **Applications Key**  and select **Calendar**.

2. Touch and hold a date and touch **New event** to add a new event.
3. Touch the **Event name** field and enter the event name. Check the date and enter the time you want your event to start and finish.
4. Touch the **Event location** field and enter the location.
5. If you want to add a note to your event, touch the **Event description** field and enter the details.
6. If you want to repeat the alarm, set **Repetition**. You can also set **Reminders**, if necessary.
7. Touch **Done** to save the event in the calendar. A colored square in the calendar marks all days that have saved events. An alarm sounds at the event start time to help you stay organized.



Changing your calendar view



1. From the Home screen, touch the **Applications Key**  and select **Calendar**.
2. Touch the **Menu Key**  and select the calendar view.

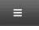
Voice Recorder

Use the voice recorder to record voice memos or other audio files.

Recording a sound or voice


1. From the Home screen, touch the **Applications Key**  and select **Voice Recorder**.
2. Touch  to begin recording.

3. Touch  to end the recording.
4. Touch  to listen to the recording.

NOTE: touch  to access your list of recordings. You can listen to the saved recording.

Notice: The available recording time may differ from the real time.

Sending the voice recording

1. Once you have finished recording, you can send the audio clip by touching the **Menu Key**  > **Share**.
2. Choose from **Bluetooth**, **Email** or **Gmail**.

Polaris Viewer

Polaris Viewer is a professional mobile office solution that lets users conveniently view various types of office documents, including Word, Excel and PowerPoint files, anywhere, anytime, using their mobile devices.

Managing files

Polaris Viewer provides mobile users with convenient file management features, including copying, pasting, renaming and deleting files and folders right on the device.

Viewing files

Mobile users can now easily view a wide variety of file types, including Microsoft Office documents and Adobe PDF, right on their mobile devices. When viewing documents using Polaris Viewer, the objects and layout remain the same as in their original documents.

App Manager

You can manage your applications with App Manager. You can easily check the number of currently running applications and shut down applications. You can also uninstall the applications you have installed on your device.

To stop running applications

1. Open **App Manager** and touch the **Running apps** tab (if necessary).
2. Touch **Stop** next to the desired application.

NOTE: If you want to stop all running apps, touch Stop all.

To uninstall an application

1. Open **App Manager** and touch the **Installed apps** tab.
2. Touch **Uninstall** next to the desired application.
3. Touch **OK** to confirm.

Help

To get help about the App Manager, open **App Manager** and touch the **Help** tab.







The Web

Browser

Browser gives you a fast, full-color world of games, music, news, sport, entertainment and much more, right on your mobile phone. Wherever you are and whatever you enjoy.





NOTE: Additional charges apply when connecting to these services and downloading content. Check data charges with your network provider.

Using the web toolbar

-  Touch to go back one page.
-  Touch to go forwards one page to the one you connected to after the current page. This is the opposite of what happens when you press the **Back Key** , which goes to the previous page.
-  Touch to show all your open windows.
-  Touch to add a new window
-  View and manage bookmark and show **Most visited**, **Read it later** and **History**.

Using options

Touch the **Menu Key**  to view the following options:

-  **Read it later** – Add the current web page in read it later.
-  **Add RSS feed** – Add the current web page to the RSS feed.
-  **Share page** – Allows you to share the web page with others.
-  **Find on page** – Allows you to find letters or words on the current web page.



Select text – Allows you to copy any text from the web page.



More

- **Home page:** Go to the Home page.
- **Set home page:** Set the current web page as your Home page.
- **Add shortcut to home:** Add the shortcut of the current web page to the Home screen.
- **Page info:** Displays the web page information.
- **Downloads:** Displays your download history.
- **Settings:** Change web browser settings.

NOTE: To return the previous page, touch the **Back Key** .

Settings


From the Home screen, touch the **Applications Key**  then touch **Settings**.

Wireless & networks

This menu allows you to manage Wi-Fi and Bluetooth. You can also set up mobile networks and switch to airplane mode.


Airplane mode – After switching to airplane mode, all wireless connections are disabled.

Wi-Fi – Touch to activate. This turns on Wi-Fi to connect to available Wi-Fi networks.

Wi-Fi settings – Allows you to set up and manage wireless access points. Set network notification or add a Wi-Fi network. The advanced Wi-Fi settings screen is accessed from the Wi-Fi settings screen. Touch the **Menu Key**  and touch **Advanced**.

TIP! How to obtain the MAC address

To set up a connection in some wireless networks with MAC filters, you may need to enter the MAC address of your LG L38C into the router.

You can find the MAC address using the following steps: From the Home screen, touch the **Applications Key**  > **Settings** > **Wireless & networks** > **Wi-Fi settings** > **Menu Key**  > **Advanced** > **MAC Address**.

Bluetooth – Touch to select: This turns on Bluetooth to connect to Bluetooth devices.

Bluetooth settings – Allows you to set the device name and discoverable mode, scan for other devices, and check a list of Bluetooth devices that you've previously configured.

VPN settings – Displays the list of Virtual Private Networks (VPNs) that you've previously configured. Allows you to add different types of VPN.

Mobile networks – Set options for data.

Call settings

< Voicemail >

Voicemail service – Allows you to select your carrier's voicemail service.

< Other call settings >

Excuse messages – When you want to reject a call, you can send a quick message using this function. This is useful if you need to reject a call during a meeting.

Auto retry - Allows you to enable or disable Auto retry mode.

TTY mode - Allows you to set TTY mode.

DTMF tones - Set the length of DTMF tones.

Auto answer - Allows you to enable or disable Auto answer with Handsfree.

Call restrictions - Restrict incoming or outgoing call.

Call duration - View the duration of calls including last call, all calls, dialed calls and received calls.

Voice privacy - Enable enhanced privacy mode.

Sound

< General >

Silent mode – Allows you to mute all sounds (including call and notification ringtones) except the audio from music and videos and any alarms you have set. You must mute media and alarm sounds in their own applications.

Vibrate – Allows you to set your phone to vibrate when you receive an incoming call.

Volume – Allows you to set the volume for ringtones, media and alarms. If you deselect the option to use ringtone volume for notifications, you can set the volume for ringtones and notifications separately.

< Incoming calls >

Phone ringtone – Allows you to set your default incoming call ringtone.

< Notifications >

Notification ringtone – Allows you to set your default notification ringtone.

< Feedback >

Audible touch tones – Allows you to set the phone to play tones when using the dialpad to dial numbers.

Audible selection – Allows you to set your phone to play a sound when you touch buttons, icons and other onscreen items that react to your touch.

Screen lock sounds – Allows you to set your phone to play a sound when locking and unlocking the screen.

Emergency tone – Set behavior when an emergency call is placed.

Display

Brightness – Adjust the screen brightness.

Auto-rotate screen – Set to switch orientation automatically when you rotate the phone.

Animation – Set to display an animation.

Screen timeout – Set the time for screen timeout.

Location & security

< **My location** >

E911 - E911 Location cannot be turned off on any mobile cellular phone.

Standalone GPS Services - Use location services based on standalone GPS.

Google Location services - Use location services provided by Google. When you select this option, you're asked whether you consent to allowing Google to use your location when providing these services.

< **Screen unlock** >

Set up screen lock – Set an unlock pattern to secure your phone. Opens a set of screens that guide you through drawing a screen unlock pattern. You can set a **PIN** or **Password** instead of a **Pattern** or leave it as **None**.

When you turn on your phone or wake up the screen, you're asked to draw your unlock pattern to unlock the screen.

< **Passwords** >

Visible passwords – Select to show passwords as you type them or deselect

to hide passwords as you type them.

< **Device administration** >

Select device administrators – Add one or more administrators.

< **Credential storage** >

Use secure credentials – Allows you to access secure certificates.

Install from SD card – Choose to install encrypted certificates from your SD card.

Set password – Set or change the credential storage password.

Clear storage – Clear credentials for all content and reset password.

Applications

Unknown sources – Allows you to install non-Play Store applications.

Manage applications – Manage and remove installed applications.

Running services – Check services that are currently running.

Storage use – View storage used by applications.

Battery use – See what has been using the battery.

Development – Set options for application development.

Accounts & sync

< General sync settings >

Background data – Permits applications to synchronize data in the background, whether or not you are actively working in them. Deselecting this setting can save battery power and lowers (but does not eliminate) data usage.

Auto-sync – Permits applications to synchronize, send and receive data to their own schedule.

< Manage accounts >

List of all Google accounts and other accounts you've added to your phone. If you touch an account in this screen, its account screen opens.

Privacy

< Backup and restore >

- **Back up my data:** Set to back up your settings and application data to the Google server.
- **Automatic restore:** Set to restore your settings and application data when the applications are reinstalled on your device.

< Personal data >

- **Factory data reset:** Reset your settings to the factory default values and delete all your data. If you reset the phone in this way, you are prompted to reenter the same information as when you first started Android.

Storage

<USB connection mode>

Allows you to set **Mass storage only** mode.

< Internal memory >

Check total available internal memory space. Touch **Erase internal memory** if you want to delete all data from the internal memory.

< SD card >

Check total available SD card space. Touch **Unmount SD card** for safe removal. Touch **Erase SD card** if you want to delete all data from the SD card.

< System memory >

Checks the available space.

Language & keyboard

Set local language as well as keyboard settings.

Voice input & output

< Voice input >

Voice recognizer settings – Allows you to configure the Android voice input feature.

- **Language:** Opens a screen where you can set the language you use for speech to enter text.

- **SafeSearch:** Opens a dialog where you can set whether you want the Google SafeSearch filter to block some results.
- **Block offensive words:** When deselected, Google voice recognition will recognize and transcribe words many people consider offensive, when you use speech to enter text. When selected, Google voice recognition replaces those words in transcriptions with a placeholder comprised of star symbols (*).

< Voice output >

Text-to-speech settings – Allows you to configure the Android text-to-speech synthesizer for applications that can use this feature.

NOTE: If you don't have speech synthesizer data installed, only the **Install voice data** setting is available.

- **Listen to an example:** Plays a brief sample of the speech synthesizer, using your current settings.
- **Always use my settings:** Checkmark to use the settings on this screen in place of speech synthesizer settings available in other applications.
- **Default Engine:** Opens a dialog where you can set the text-to-speech application you want to use, if you have more than one installed.
- **Install voice data:** If your phone does not have speech synthesizer data installed, this connects to Play Store and guides you through the process of downloading and installing the data. This setting is not available if the data is already installed.
- **Speech rate:** Opens a dialog where you can select how quickly you want the synthesizer to speak.

- **Language:** Opens a dialog where you can select the language of the text you want the synthesizer to read. This is particularly useful in combination with **Always use my settings** to ensure that text is spoken correctly in a variety of applications.
- **Pico TTS:** Configure the **Pico TTS settings**.

Accessibility

Use the **Accessibility** settings to configure accessibility plug-ins you have installed on your phone.

NOTE: Requires additional plug-ins.

Date & time


Use **Date & time** settings to set your preference for how dates are displayed.

About phone

View legal information and check phone status and software version.

Update your smart phone without a PC(FOTA)

This feature allows you to conveniently update your phone's software to a newer version via Firmware Over-the-Air (FOTA), without connecting with to a USB cable.

1. From the Home screen, touch the **Menu Key**  > **Settings** > **About phone** > **Software update**.
2. Select the desired option.

Device service

- **Check now for update:** You can check the new software update and conduct the update (Wi-Fi mode is enabled for a download of more than 50MB).
- **Check automatically:** When checked, you will be notified of the new update when it becomes available.

Update history

- **Last update:** Displays the date of the last software update.
- **Next update check:** Displays the date when the next check for software update will occur.

NOTE

- If no connection to the data network has previously been made since purchase, the timeline for the next update cannot be identified since the interval for the automated update will not be created.
- You will not be charged for data for software updates.
- Available software will be checked automatically.

- Make sure to check if the battery is charged before update.
- After download, you can install the software immediately or select a later time for the installation.
- Each software version is updated sequentially. Even after the update is complete, check if there is any newer version available.
- Some features and service may vary by area, phone, carrier, plan and software version.
- LG reserves the right to make firmware updates available only for selected models at its own discretion and does not guarantee the availability of the newer version of the firmware for all handset models.

Update your smart phone by connecting it to your PC

This feature allows you to update the firmware on your phone to a newer version conveniently from the Internet without you needing to visit a service center.

1. Go to www.lg.com > **Support** > Search for the model.
2. Scroll down and click on the **SOFTWARE UPDATE** tab.
3. Install and execute the **USB DRIVER** and **LG MOBILE SUPPORT TOOL** by clicking the **Download** button.
4. Connect your phone to the PC by using the bundled USB cable.
5. Click **Start Updating** within the LG Mobile Support Tool to begin.

NOTE

- If your phone needs to update, the Start Updating button will be enabled.
- Please note that removing the USB data cable or battery during the update may seriously damage your mobile phone and make it inoperable.
- This feature is only available if or when LG makes a newer firmware version available for your device.

Copyrights and trademarks

Rights to all technologies and products that comprise this device are the property of their respective owners:

- Bluetooth® is a registered trademark of Bluetooth SIG, Inc.
- microSD™ and the microSD logo are trademarks of the SD Card Association.
- Google™, Google Maps™, Gmail™, YouTube™, Google Talk™ and Play Store™ are trademarks of Google, Inc.



Manufactured under license. DTS, the Symbol, & DTS and the Symbol together are registered trademarks & DTS Ultra Mobile is a trademark of DTS, Inc. Product includes software. © DTS, Inc. All Rights Reserved.

- Wi-Fi is a registered trademark of the Wireless Fidelity Alliance, Inc.



Manufactured under license from Dolby Laboratories. "Dolby" and the double-D symbol are trademarks of Dolby Laboratories.



Use of Adobe® Flash® Player or Adobe AIR® technology under license from Adobe Systems Incorporated. Copyright © 1995-2011.

- DivX Mobile



ABOUT DIVX VIDEO: DivX® is a digital video format created by DivX, LLC, a subsidiary of Rovi Corporation. This is an official DivX Certified® device that plays DivX video. Visit divx.com for more information and software tools to convert your files into DivX videos.

ABOUT DIVX VIDEO-ON-DEMAND: This DivX Certified® device must be registered in order to play purchased DivX Video-on-Demand (VOD) movies. To obtain your registration code, locate the DivX VOD section in your device setup menu. Go to vod.divx.com for more information on how to complete your registration.

DivX Certified® to play DivX® video up to 320x240.

DivX®, DivX Certified® and associated logos are trademarks of Rovi Corporation or its subsidiaries and are used under licence.

For Your Safety

HAC statement

This phone has been tested and rated for use with hearing aids for some of the wireless technologies that it uses. However, there may be some newer wireless technologies used in this phone that have not been tested yet for use with hearing aids. It is important to try the different features of this phone thoroughly and in different locations, using your hearing aid or cochlear implant, to determine if you hear any interfering noise. Consult your service provider or the manufacturer of this phone for information on hearing aid compatibility. If you have questions about return or exchange policies, consult your service provider or phone retailer.

.

.

.

Part15.19 statement

This device complies with part 15 of FCC rules. Operation is subject to the following two conditions:

(1) This device may not cause harmful interference, and (2) this device must accept any interference received, including interference that causes undesired operation.

For Your Safety

FCC Hearing-Aid Compatibility (HAC) Regulations for Wireless Devices

On July 10, 2003, the U.S. Federal Communications Commission (FCC) Report and Order in WT Docket 01-309 modified the exception of wireless phones under the Hearing Aid Compatibility Act of 1988 (HAC Act) to require digital wireless phones be compatible with hearing-aids. The intent of the HAC Act is to ensure reasonable access to telecommunications services for persons with hearing disabilities. While some wireless phones are used near some hearing devices (hearing aids and cochlear implants), users may detect a buzzing, humming, or whining noise. Some hearing devices are more immune than others to this interference noise, and phones also vary in the amount of interference they generate. The wireless telephone industry has developed a rating system for wireless phones, to assist hearing device users to find phones that may be compatible with their hearing devices. Not all phones have been rated. Phones that are rated have the rating on their box or a label located on the box. The ratings are not guarantees. Results will vary depending on the user's hearing device and hearing loss. If your hearing device happens to be vulnerable to interference, you may not be able to use a rated phone successfully. Trying out the phone with your hearing device is the best way to evaluate it for your personal needs.

M-Ratings: Phones rated M3 or M4 meet FCC requirements and are likely to generate less interference to hearing devices than phones that are not labeled. M4 is the better/higher of the two ratings.

T-Ratings: Phones rated T3 or T4 meet FCC requirements and are likely to generate less interference to hearing devices than phones that are not labeled. T4 is the better/higher of the two ratings.

For Your Safety

Hearing devices may also be rated. Your hearing device manufacturer or hearing health professional may help you find this rating. Higher ratings mean that the hearing device is relatively immune to interference noise. The hearing aid and wireless phone rating values are then added together. A sum of 5 is considered acceptable for normal use. A sum of 6 is considered for best use. In the example, if a hearing aid meets the M2 level rating and the wireless phone meets the M3 level rating, the sum of the two values equal M5. This should provide the hearing aid user with “normal usage” while using their hearing aid with the particular wireless phone. “Normal usage” in this context is defined as a signal quality that’s acceptable for normal operation.

The M mark is intended to be synonymous with the U mark. The T mark is intended to be synonymous with the UT mark. The M and T marks are recommended by the Alliance for Telecommunications Industries Solutions (ATIS). The U and UT marks are referenced in Section 20.19 of the FCC Rules. The HAC rating and measurement procedure are described in the American National Standards Institute (ANSI) C63.19 standard. When you’re talking on a cell phone, it’s recommended that you turn the BT (Bluetooth) or WLAN mode off for HAC.

.

.

.

.

**For information about hearing aids
and digital wireless phones Wireless
Phones and Hearing Aid Accessibility**

<http://www.accesswireless.org/Home.aspx>

.

**FCC Hearing Aid Compatibility and
Volume Control**

http://www.fcc.gov/cgb/consumerfacts/hac_wireless.htm
