



18. TEST PHOTOGRAPHS

See following Attached Pages for setup photographs.

FCC ID: ZNFL34C	 PCTEST ENGINEERING LABORATORY, INC.	HAC (RF EMISSIONS) TEST REPORT	 LG	Reviewed by: Quality Manager
Filename: 0Y1401200117.ZNF	Test Dates: 1/22/2014	EUT Type: Portable Handset		Page 61 of 63

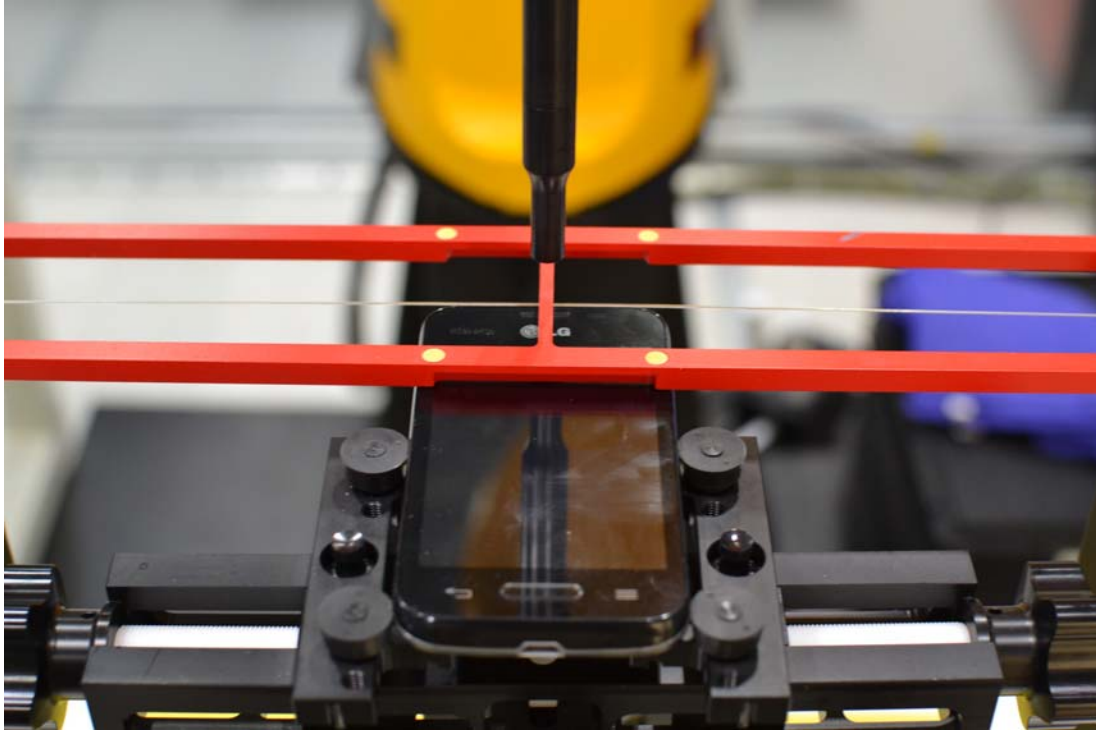


Figure 18-1
Ear Reference Point HAC Phantom Alignment

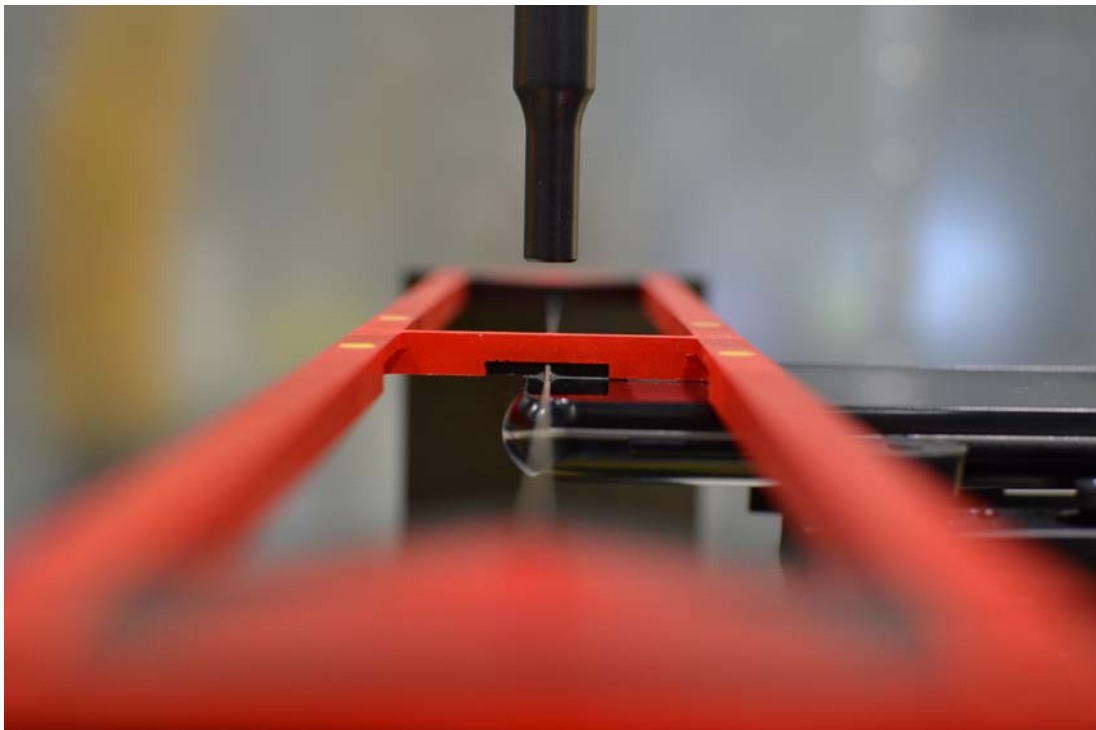




Figure 18-2
HAC Phantom Plane Alignment

FCC ID: ZNFL34C	 PCTEST ENGINEERING LABORATORY, INC.	HAC (RF EMISSIONS) TEST REPORT	 LG	Reviewed by: Quality Manager
Filename: 0Y1401200117.ZNF	Test Dates: 1/22/2014	EUT Type: Portable Handset		Page 62 of 63

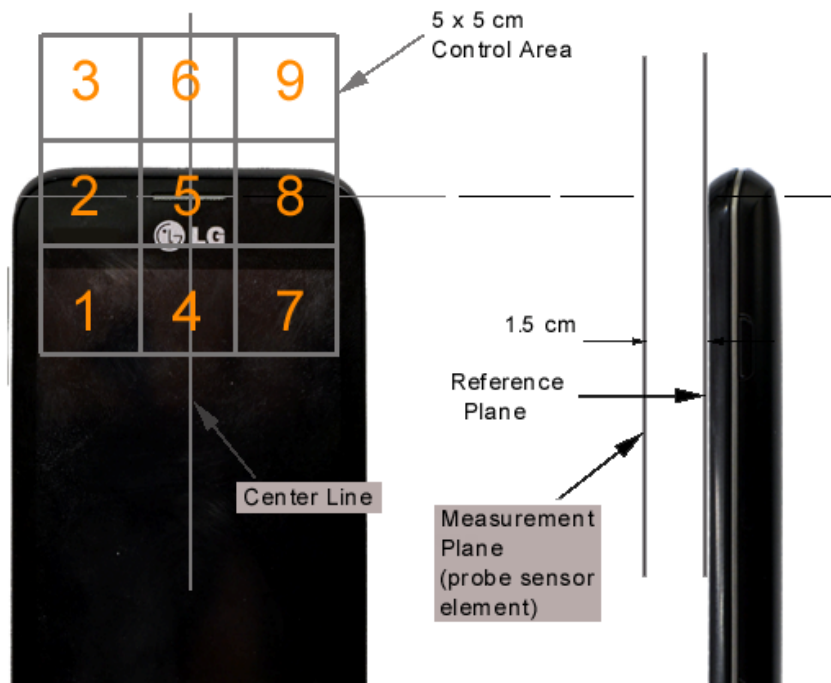


Figure 18-3 5x5 Scan grid above WD

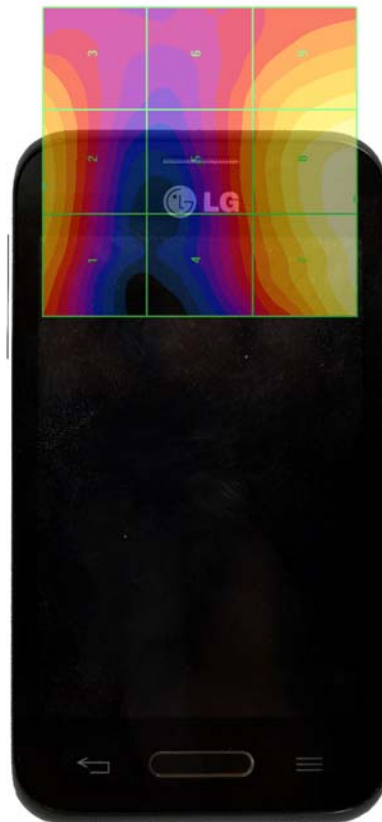




Figure 18-4 E-Field WD Scan overlay

FCC ID: ZNFL34C	 PCTEST ENGINEERING LABORATORY, INC.	HAC (RF EMISSIONS) TEST REPORT	 LG	Reviewed by: Quality Manager
Filename: 0Y1401200117.ZNF	Test Dates: 1/22/2014	EUT Type: Portable Handset		Page 63 of 63