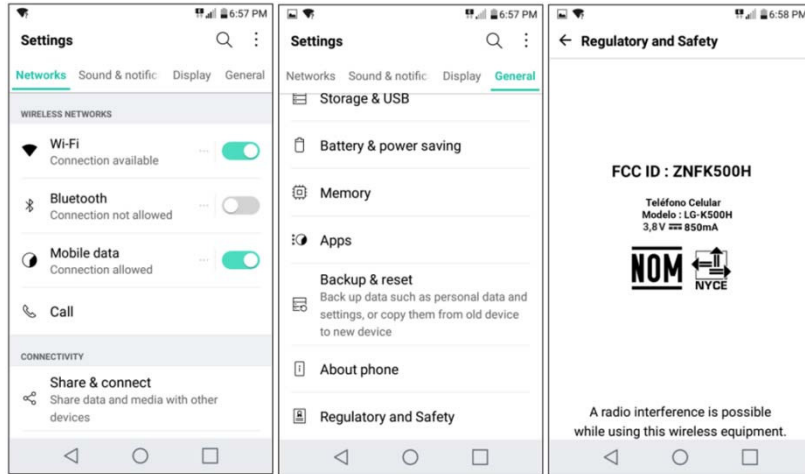


Description of E-Label on the ZNFK500H

❖ FCC ID is applied by E-Label on the device



Setting Menu	
Step 1	Settings
Step 2	General
Step 3	Regulatory and Safety

❖ Instruction of E-Label on the user manual

Regulatory information

For regulatory details, go to **Settings > General > Regulatory and safety** on your phone.

❖ FCC ID is applied on packaging Label

Model No: LG-K500H
FCC ID : ZNFK500H
S/N : XXXX
Made in XXXX
IMEI : XXXXXXXXXXXXX

Note!

We, LG Electronics MobileComm USA, state that at the time of purchase, the FCC ID is readily and physically visible to the purchaser on the packaging Label per 2.925(d). So, The FCC ID will be able to survive normal shipping and handling so it is visible for inspection at the time of import. We have programmed the e-label and it is not able to be modified by any third party. Also, SIM Card in is not required to access the FCC ID number.