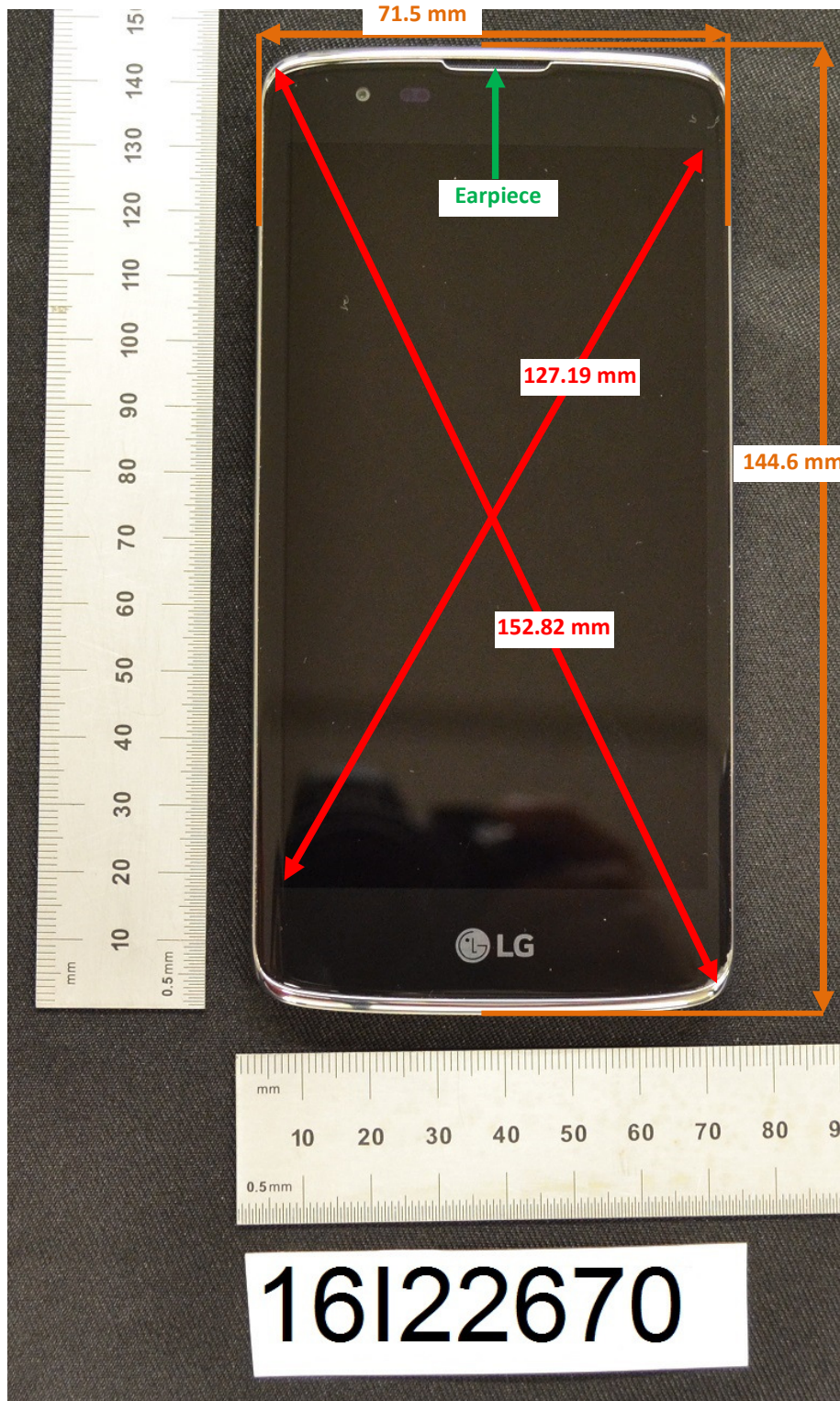


DUT and SAR Set-up Photos

Overall Dimensions



Front View of the DUT



Rear View of the DUT



Setup Photos

Handset Vertical and Horizontal Reference Lines

Vertical
Center Line

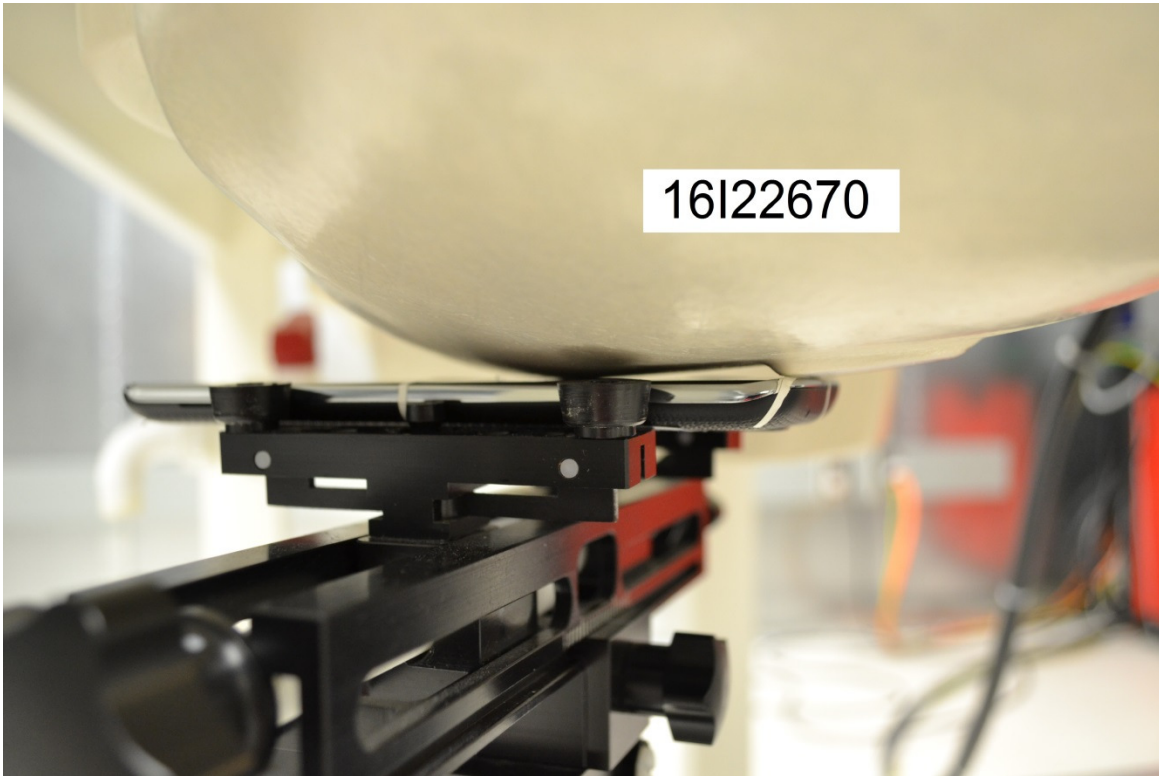
Horizontal
Line



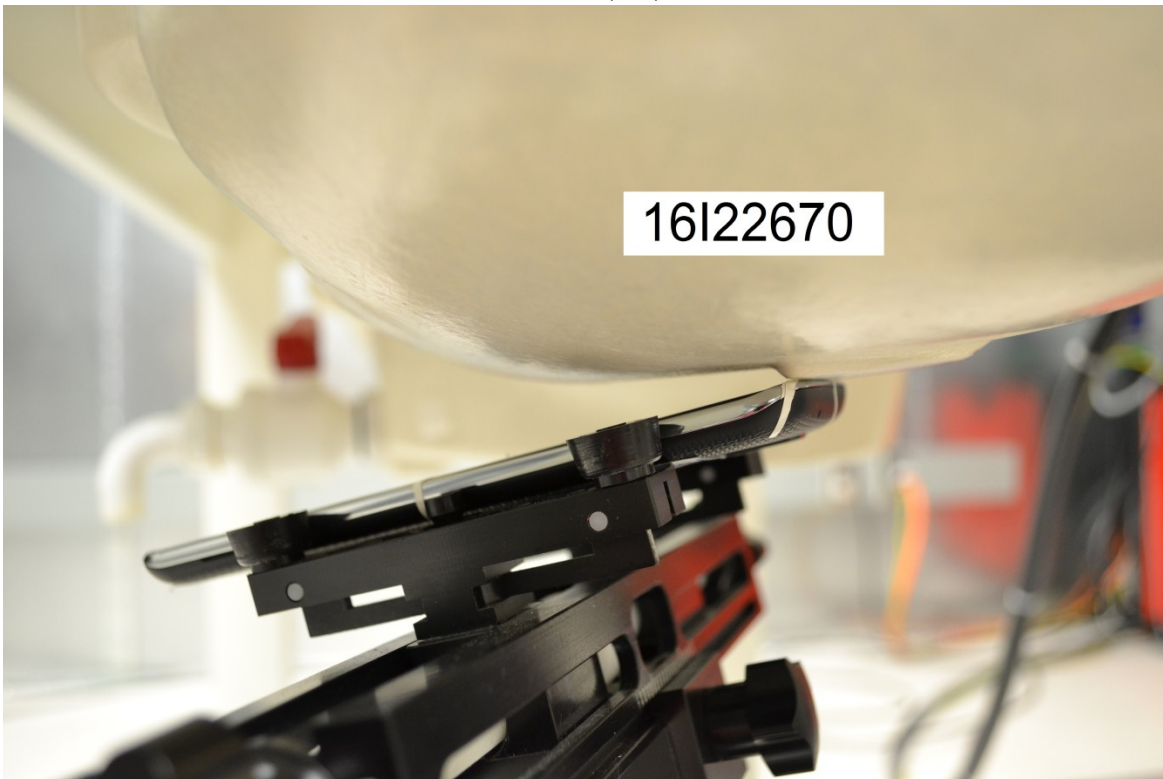
16I22670

Head Exposure Conditions

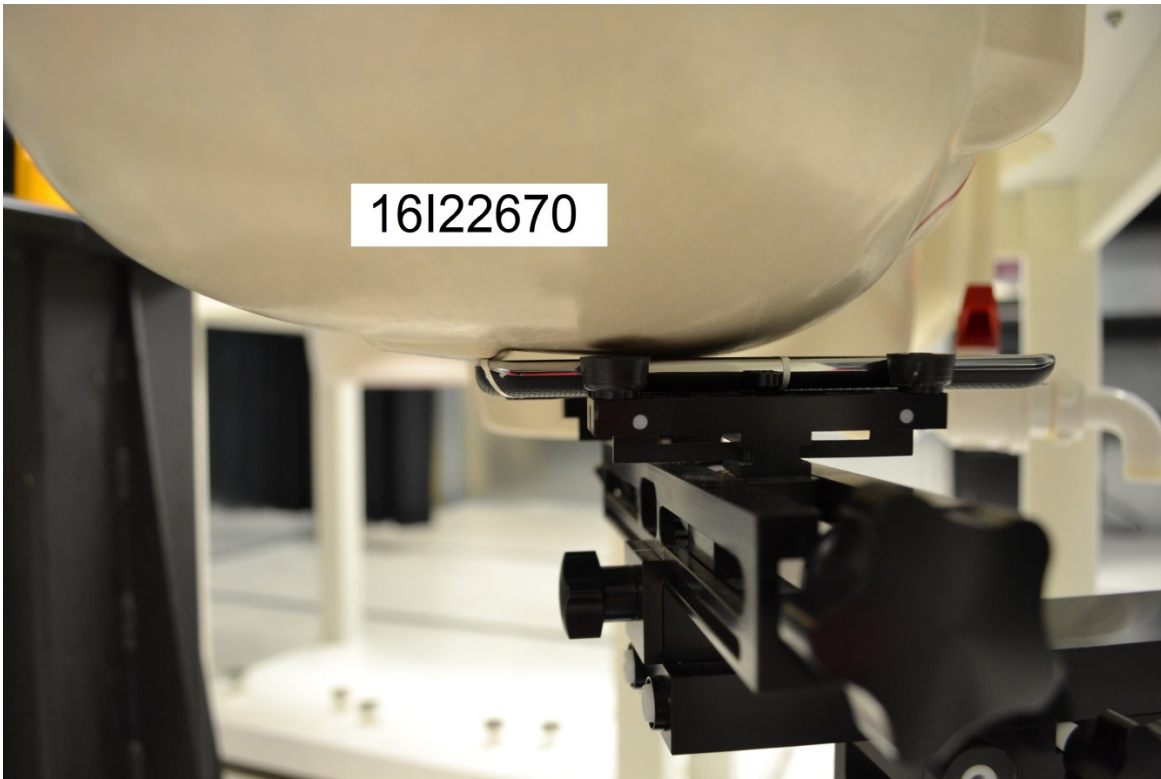
Left Touch



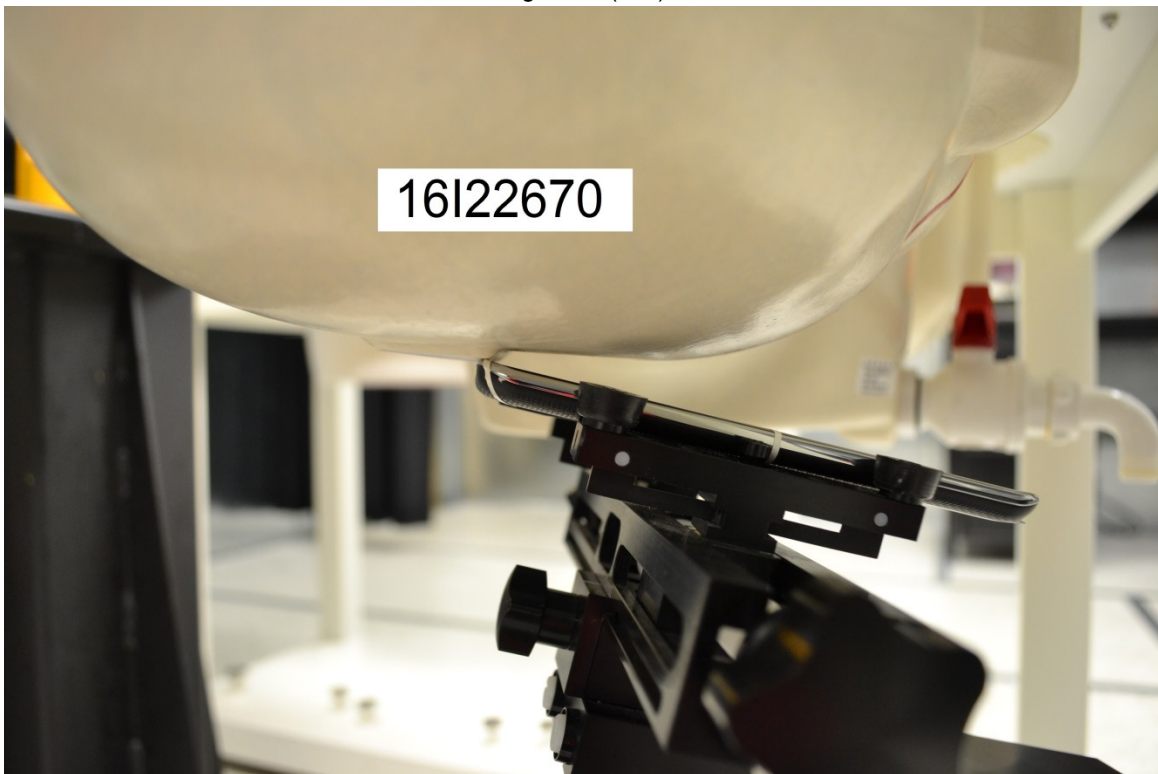
Left Tilt (15°)



Right Touch

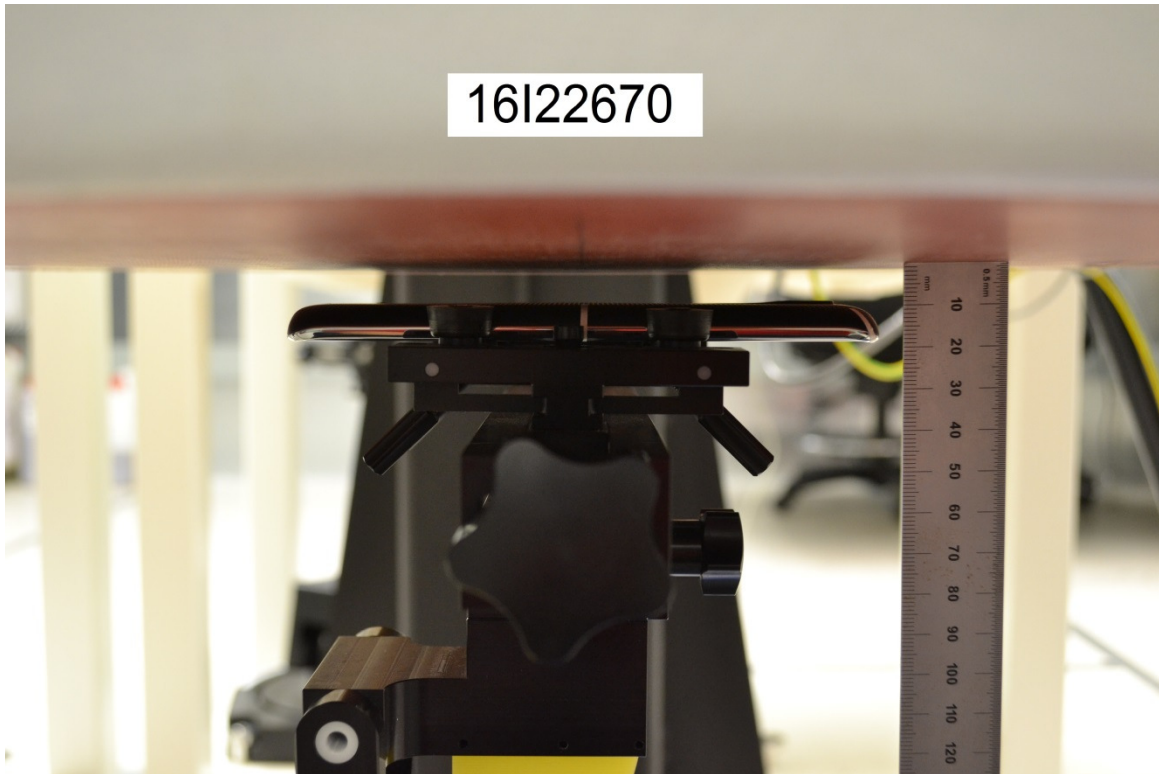


Right Tilt (15°)

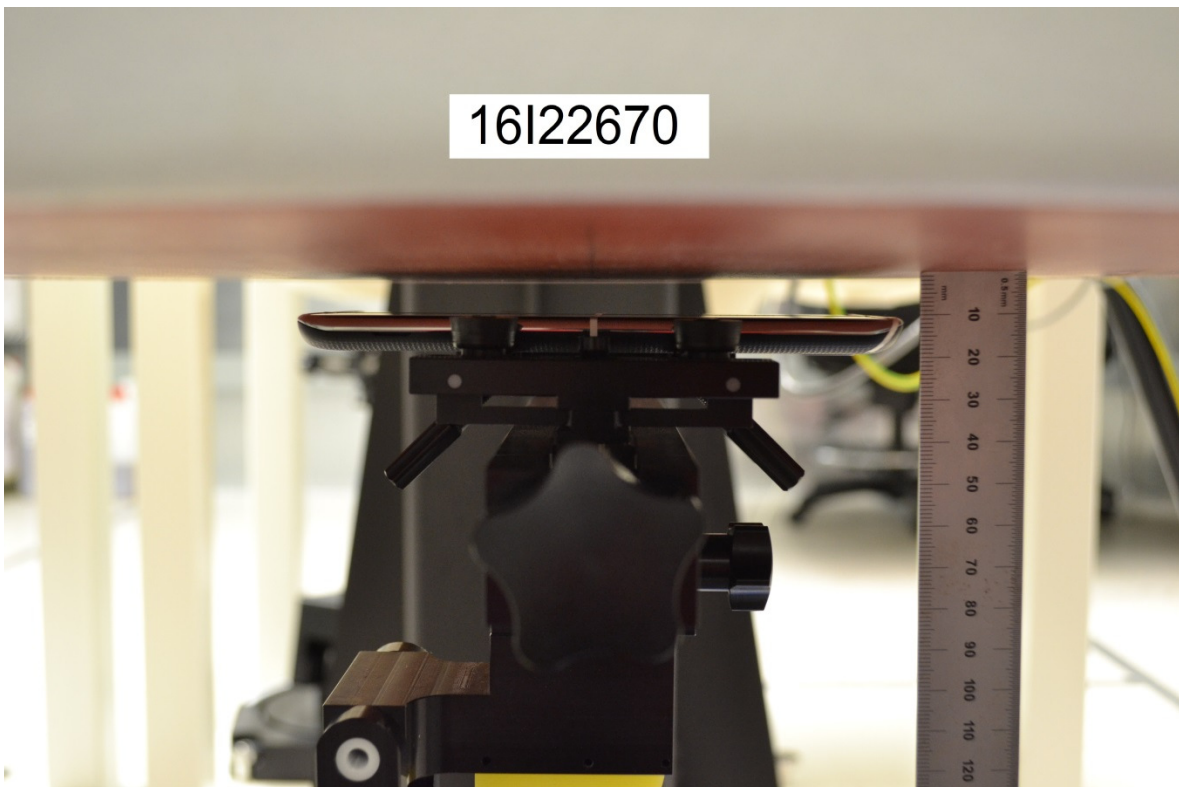


Body-worn Accessory & Hotspot mode Exposure Conditions

Rear

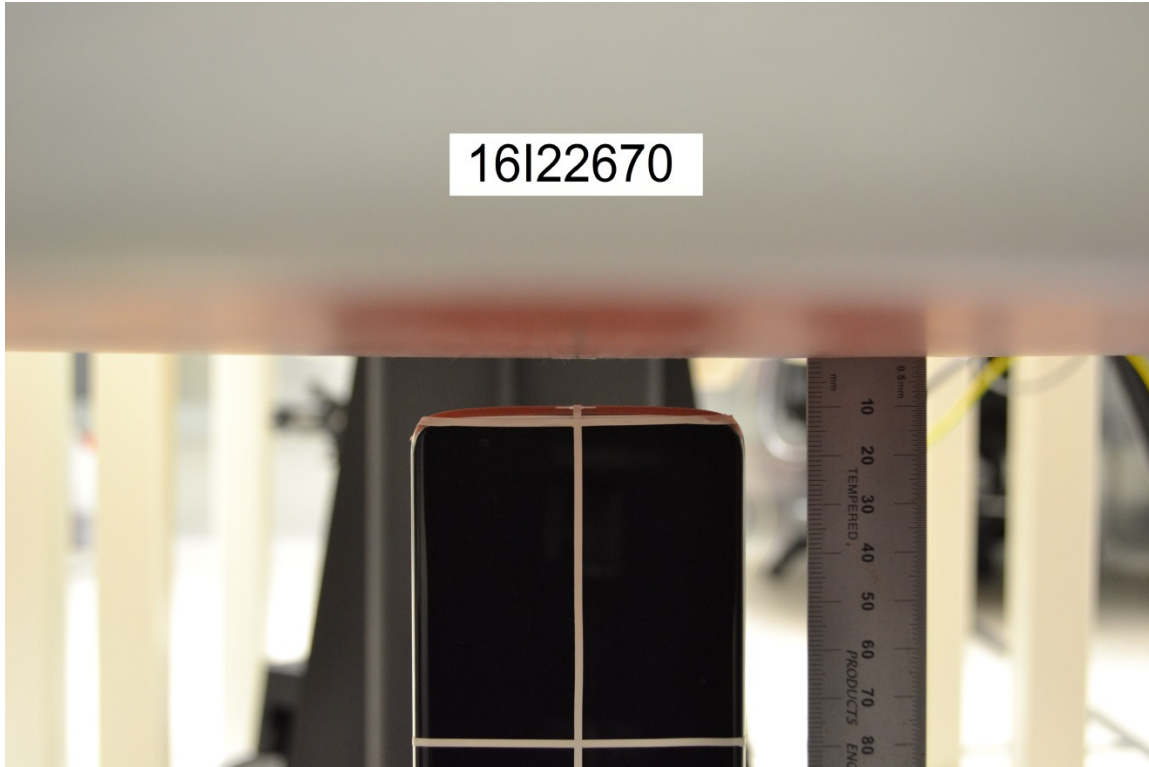


Front

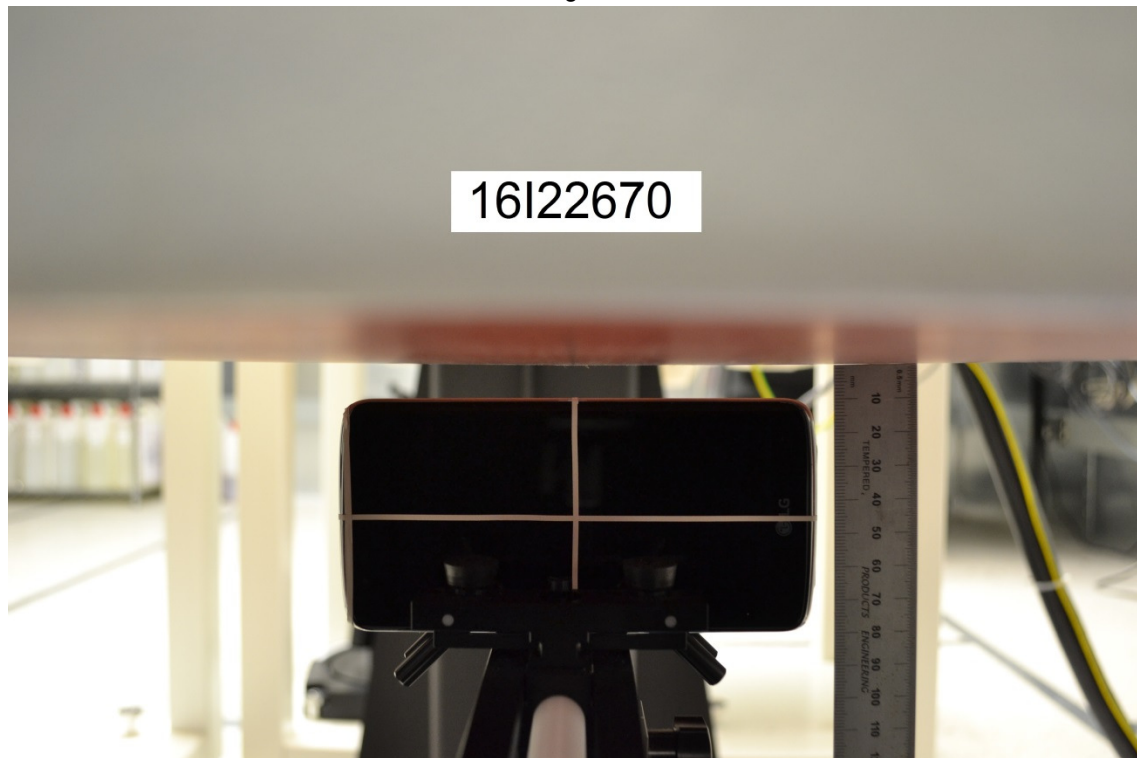


Hotspot Exposure Conditions

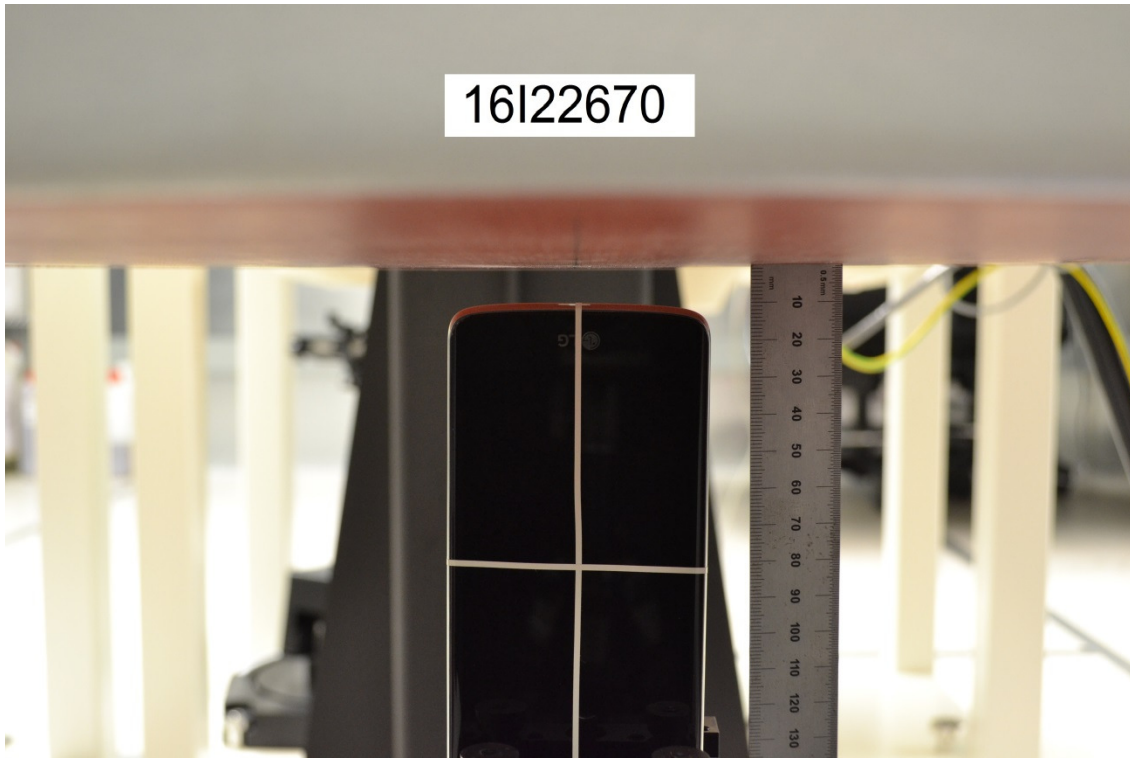
Edge 1



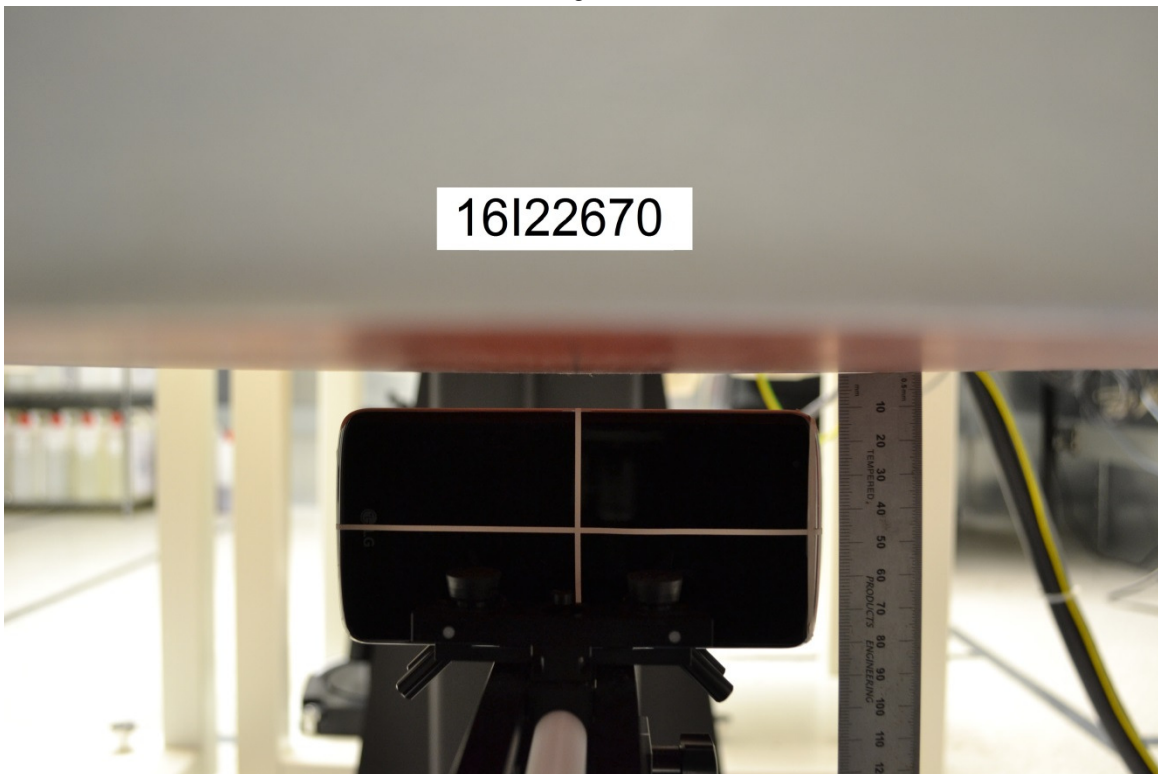
Edge 2



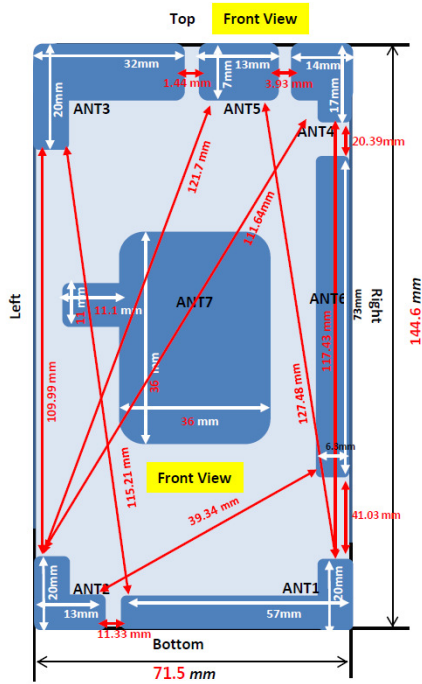
Edge 3



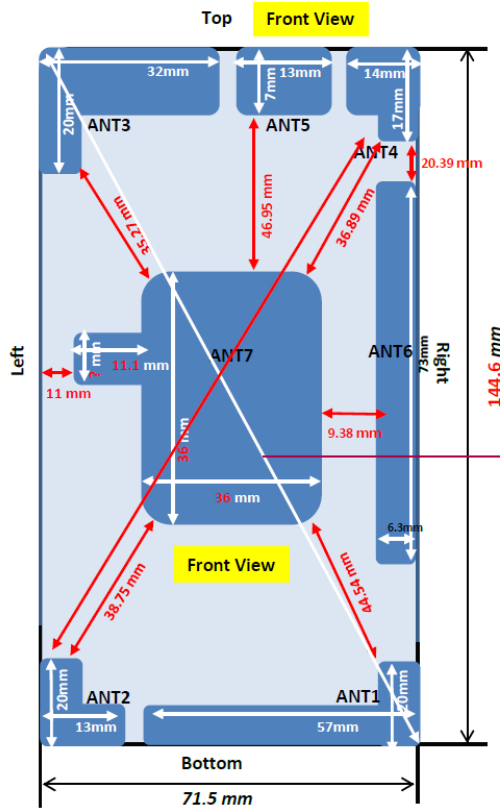
Edge 4



Antenna Dimensions & Separation Distances



- [ANT1] TX,RX both**
 LTE : B5(Tx : 824~849MHz Rx:869~894MHz),
 B12(Tx : 699~716MHz Rx:729~746MHz)
 GSM : 850(Tx : 824.2~848.8MHz Rx:869.2~893.8MHz)
 900(Tx : 880.2~914.8MHz Rx:925.2~959.8MHz)
 WCDMA : B5(Tx : 824~849MHz Rx:869~894MHz)
- [ANT1] RX only**
 LTE : B29(Rx:717~728MHz)
- [ANT2] TX,RX both**
 LTE : B2(Tx : 1850~1910MHz Rx:1930~1990MHz)
 B4(Tx : 1710~1755MHz Rx:2110~2155MHz)
 GSM : 1800(Tx : 1710.2~1784.8MHz Rx:1805.2~1879.8MHz)
 1900(Tx : 1850.2~1909.8MHz Rx:1930.2~1989.8MHz)
 WCDMA : B2(Tx : 1850~1910MHz Rx:1930~1990MHz)
 B4(Tx : 1710~1755MHz Rx:2110~2155MHz)
- [ANT3] RX only**
 GPS(1575.42MHz)
 LTE : B5(Rx:869~894MHz)
 WCDMA : B5(Rx:869~894MHz)
- [ANT4] TX,RX both**
 WIFI 2.4G(2400~2495MHz)
- [ANT5] RX only**
 LTE : B2(Rx:1930~1990MHz)
 B4(Rx:2110~2155MHz)
 WCDMA : B2(Rx:1930~1990MHz)
 B4(Rx:2110~2155MHz)
- [ANT6] RX**
 B12(Rx:729~746MHz), B29(Rx:717~728MHz)



[ANT7] TX,RX both
 NFC(13.56MHz)

* LCD size: 127.19mm
 * Overall dimension: 152.82mm

