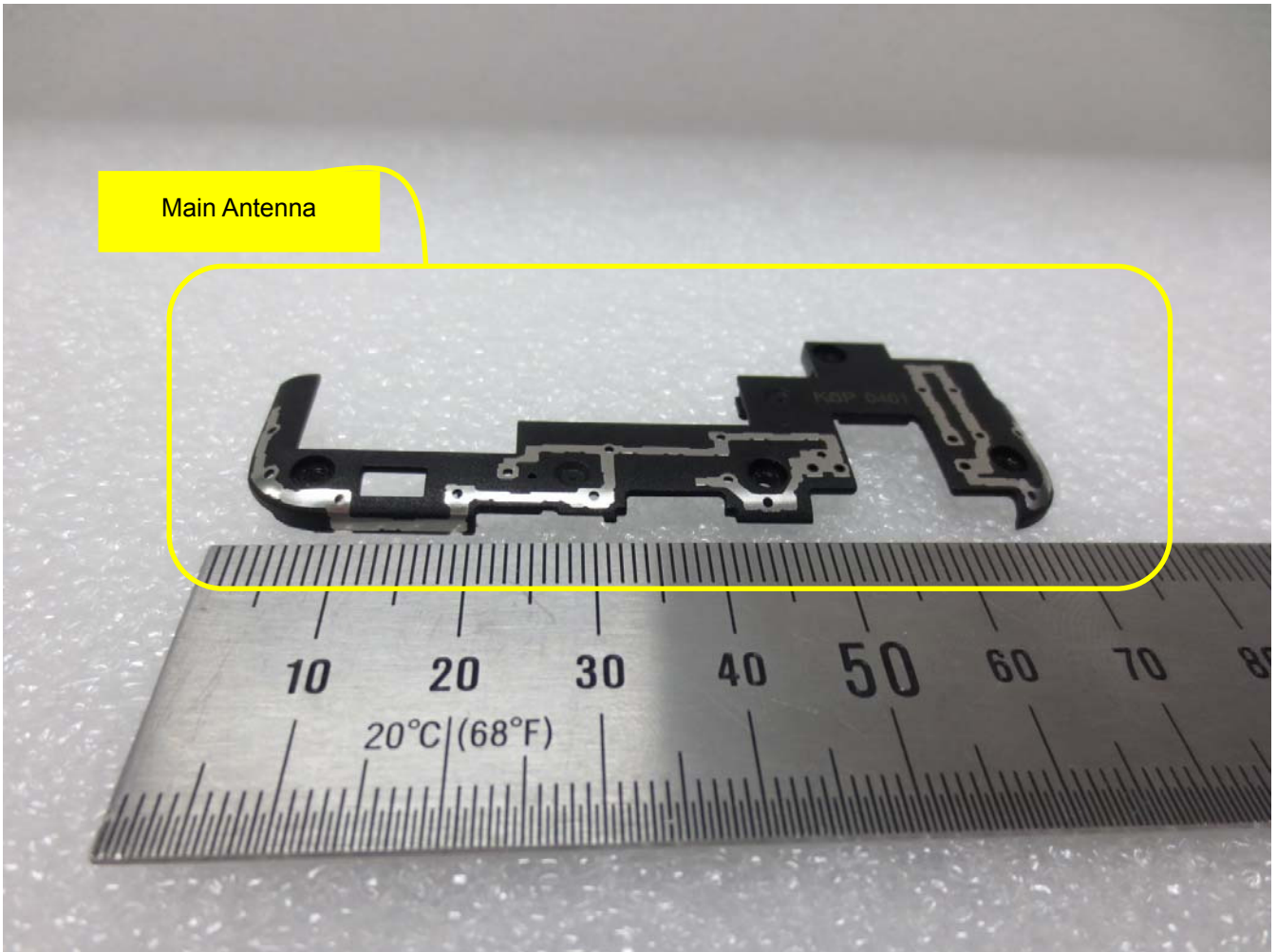


INTERNAL PHOTOGRAPHS

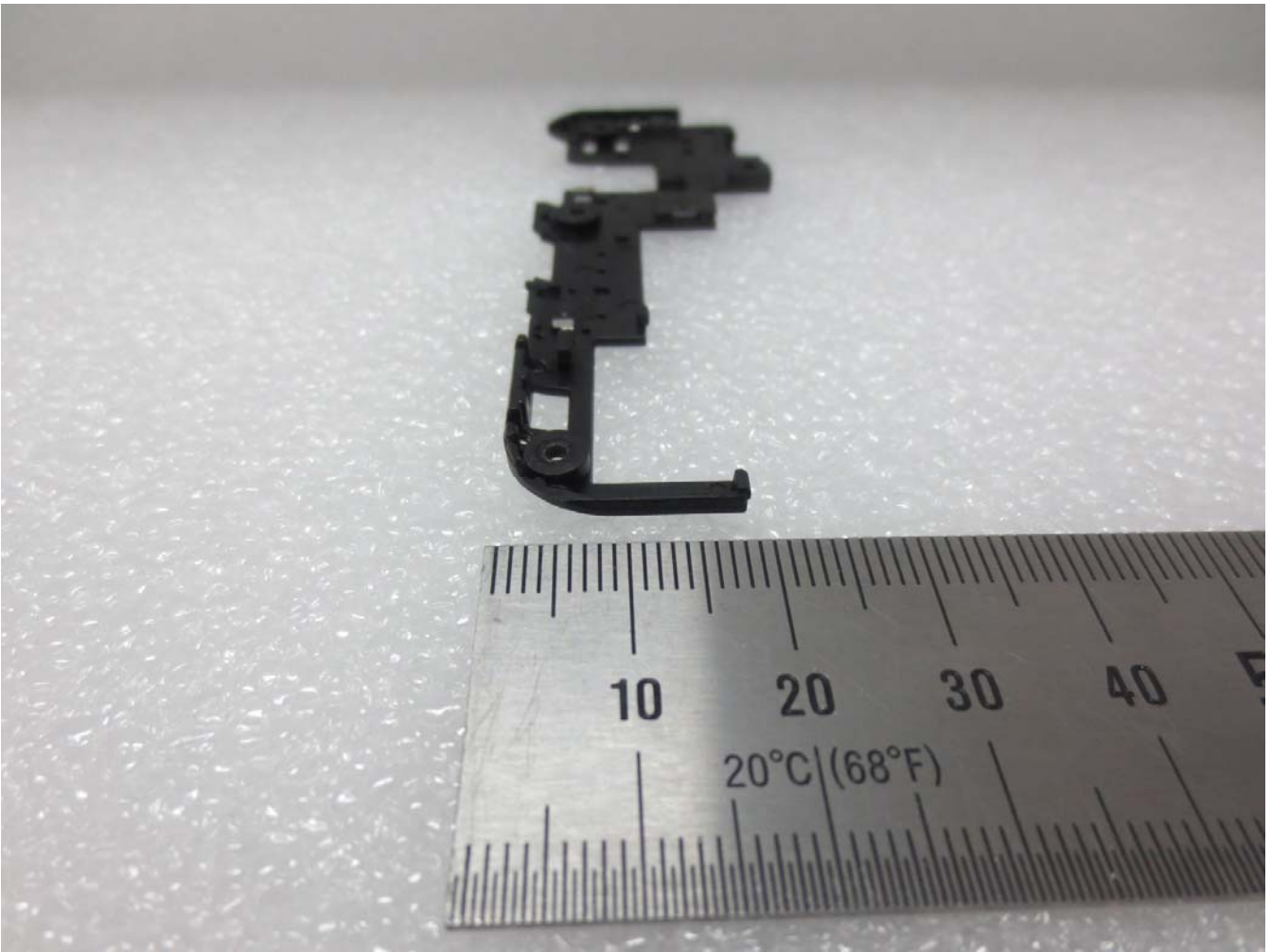
■ Main Antenna INTERNAL PHOTO



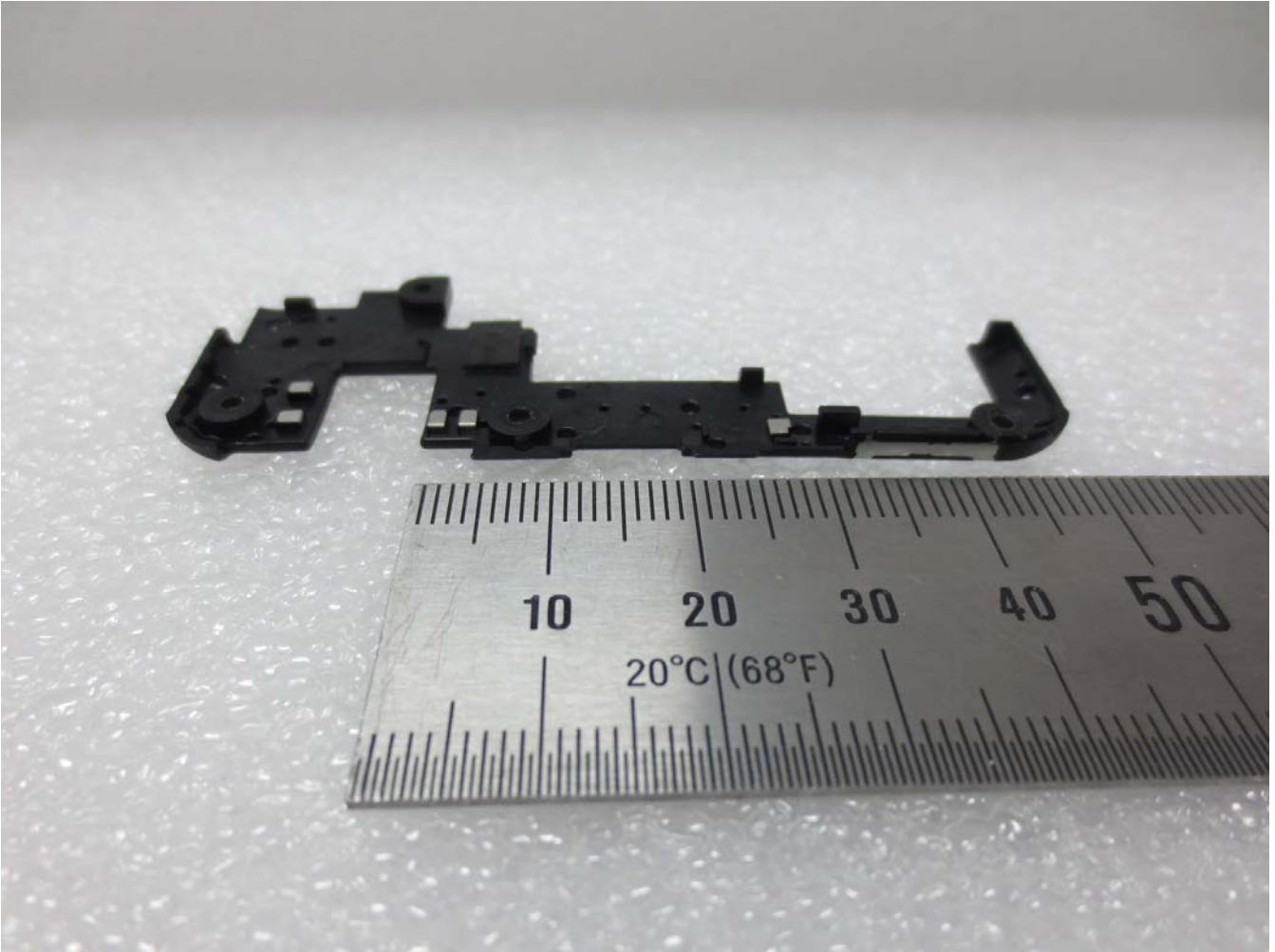
■ INTERNAL PHOTO



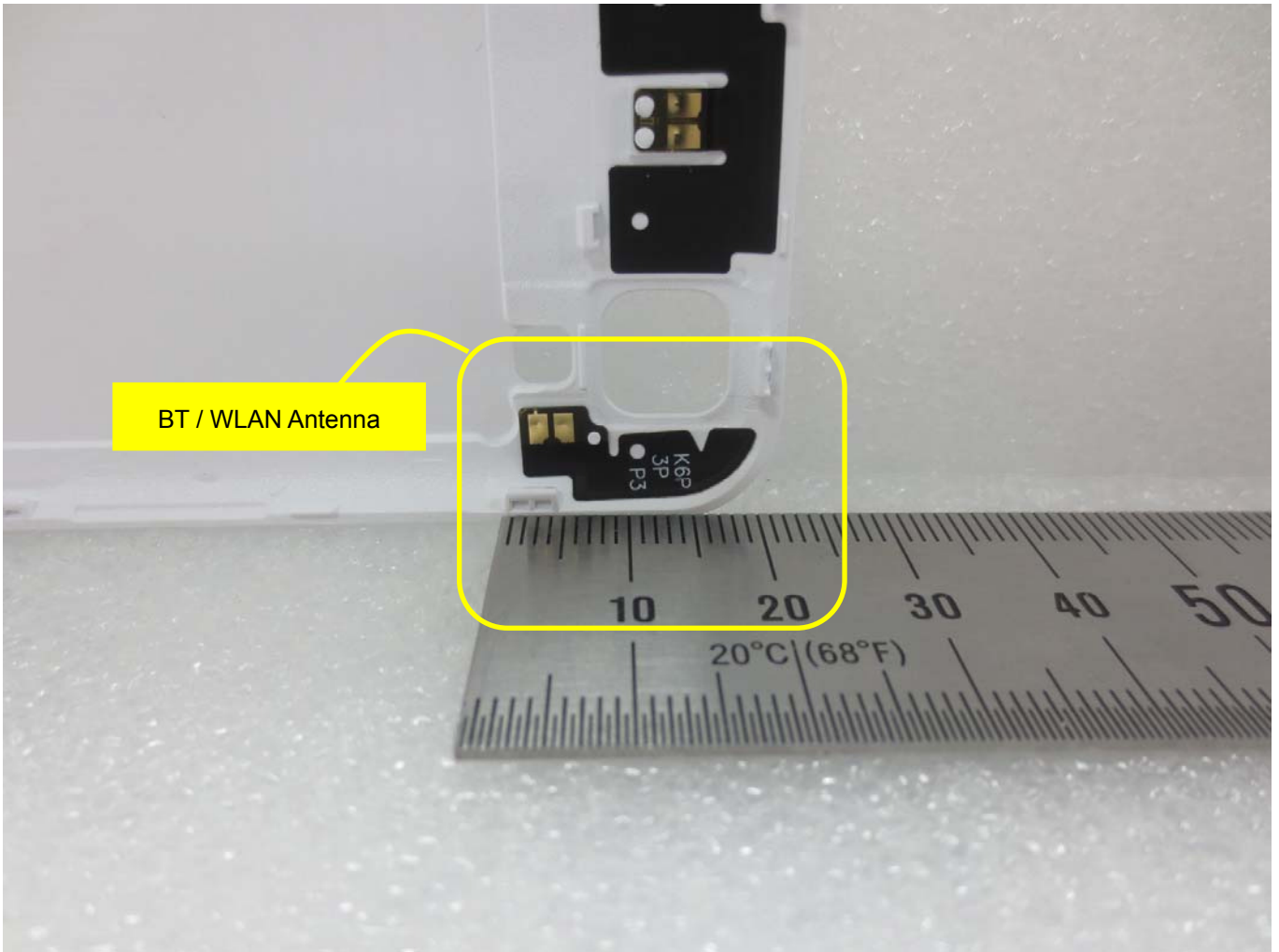
■ INTERNAL PHOTO



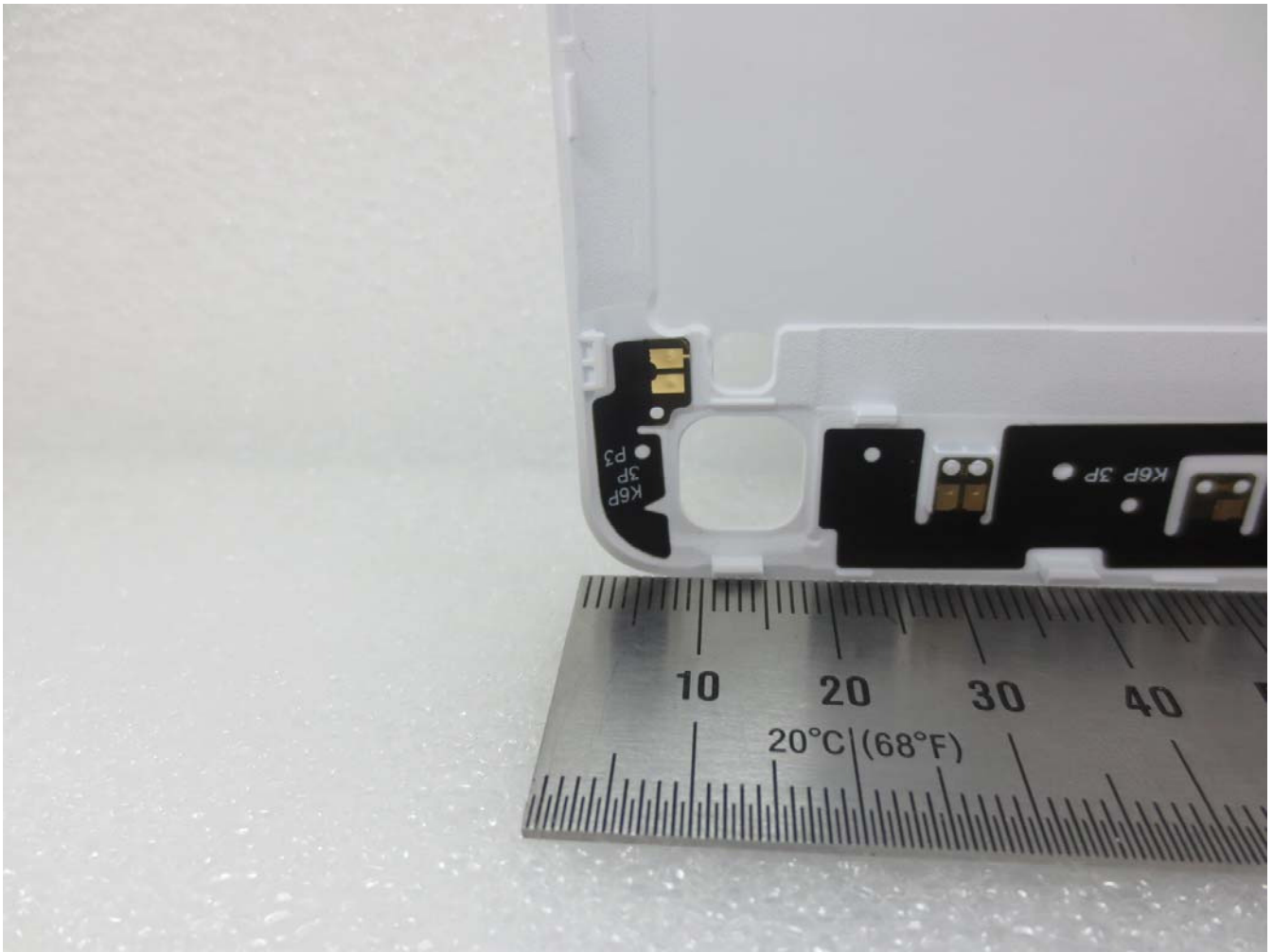
■ INTERNAL PHOTO



■ BT&WLAN Antenna INTERNAL PHOTO



■ INTERNAL PHOTO



■ INTERNAL PHOTO



INTERNAL PHOTO



■ INTERNAL PHOTO



■ INTERNAL PHOTO



INTERNAL PHOTO




LG BL-T24 Typ 4100mAh / 15.9Wh
 Min 4000mAh / 15.4Wh
 Rechargeable Li-ion Polymer Battery 3.85V
 Li-ion Polymer Battery 3.85V
 Batería de Li-ion 3,85Vcc
 二次鋰電池組
 TICP 6 / 47 / 102
 詳細說明書 참고 하세요
 REFER TO USER'S GUIDE
 CONSULTE LA GUÍA DEL USUARIO
 CONSULTE O MANUAL DO USUARIO
 REPORTEZ-VOUS AU GUIDE DE L'UTILISATEUR
CAUTION
 -Do not expose to high temperature (140°F/60°C)
 -Do not disassemble
 -Do not allow metal objects to contact or short circuit the battery terminals.
 -Do not incinerate or expose to fire.
 -Dispose of properly.
 Recycling number 1-800-822-8837
PRECAUCION
 -No la exponga a altas temperaturas.60°C(140°F)
 -No la desarme.
 -No deje objetos metálicos en contacto o corto circuito las baterías terminales.
 -No la incinere o exponga al fuego.
 -No deshaga apropiadamente.
 El número de reciclaje 1-800-822-8837
 重要事項 : 必ず
 参考書 : TECHNICAL (VANTA) LTD
 A/S 연락처 : 1544-7777
注意事項
 -請參考說明書使用
 -僅可使用說明書指定的充電器
 -切勿隨意拆解或投入火中、水中或與金屬品接觸
 -請勿暴露於過熱、高溫或腐蝕性環境中
 -嚴禁焚燒、不可隨意丟棄
 充電限制電壓 : 4.4V
 樂金化學(南京)信息電子材料有限公司
 Made in China / Fabricado na China / Fabricado en China / 中國製造
 Cell made in China. Manufactured in China
 Self Declaration - Conforming to
 IS 16046 : 2012, R-XXXXXXXXX
 生產日期:
 2016.03.11[T]
 P/N EAC63299501 LLL

■ INTERNAL PHOTO



■ INTERNAL PHOTO



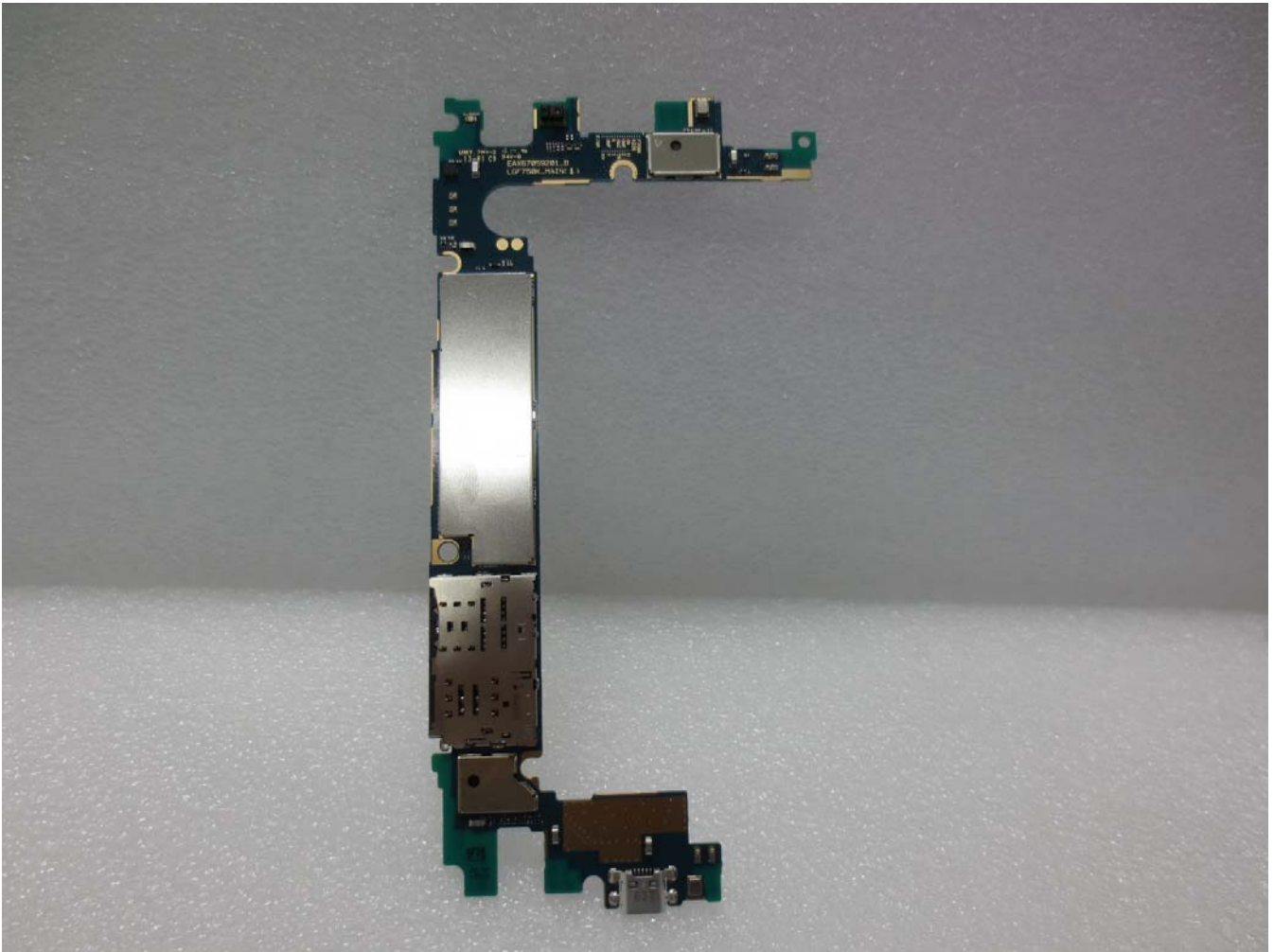
■ INTERNAL PHOTO



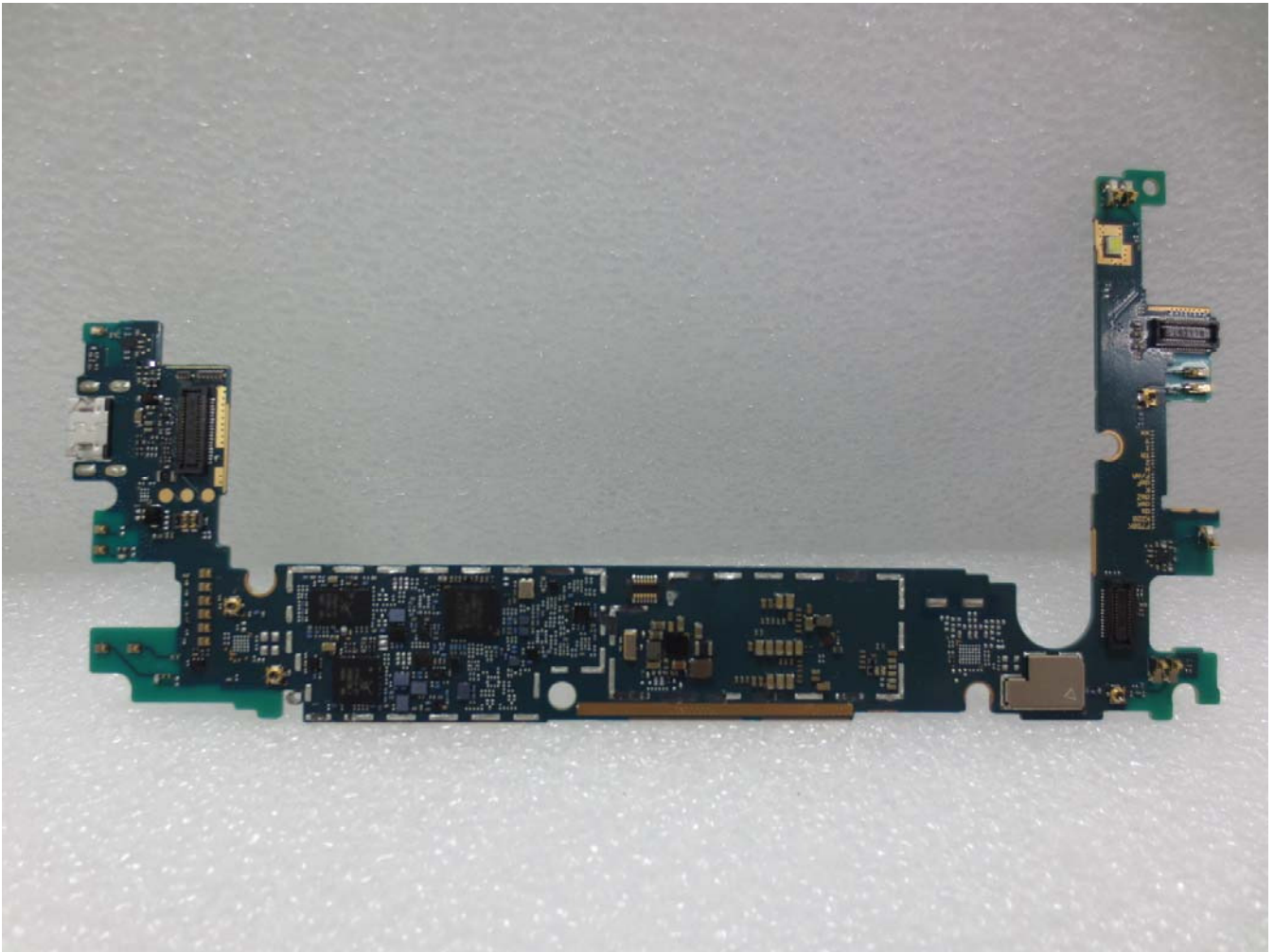
■ INTERNAL PHOTO



■ INTERNAL PHOTO



■ INTERNAL PHOTO



■ INTERNAL PHOTO

