

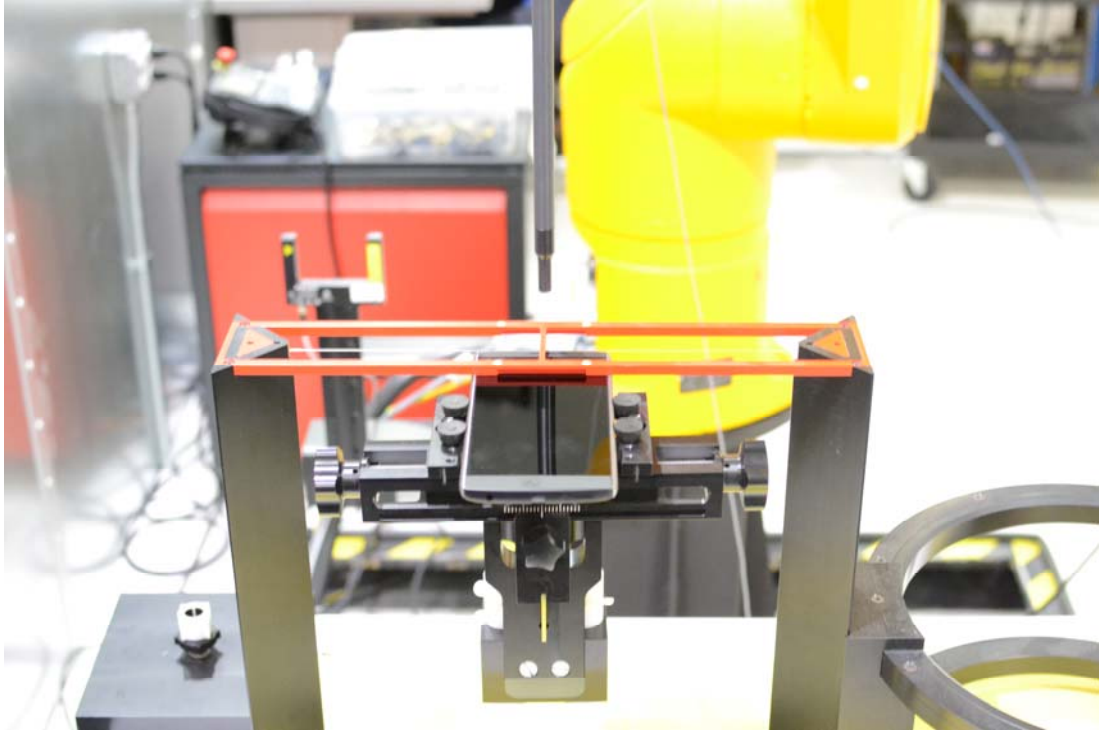


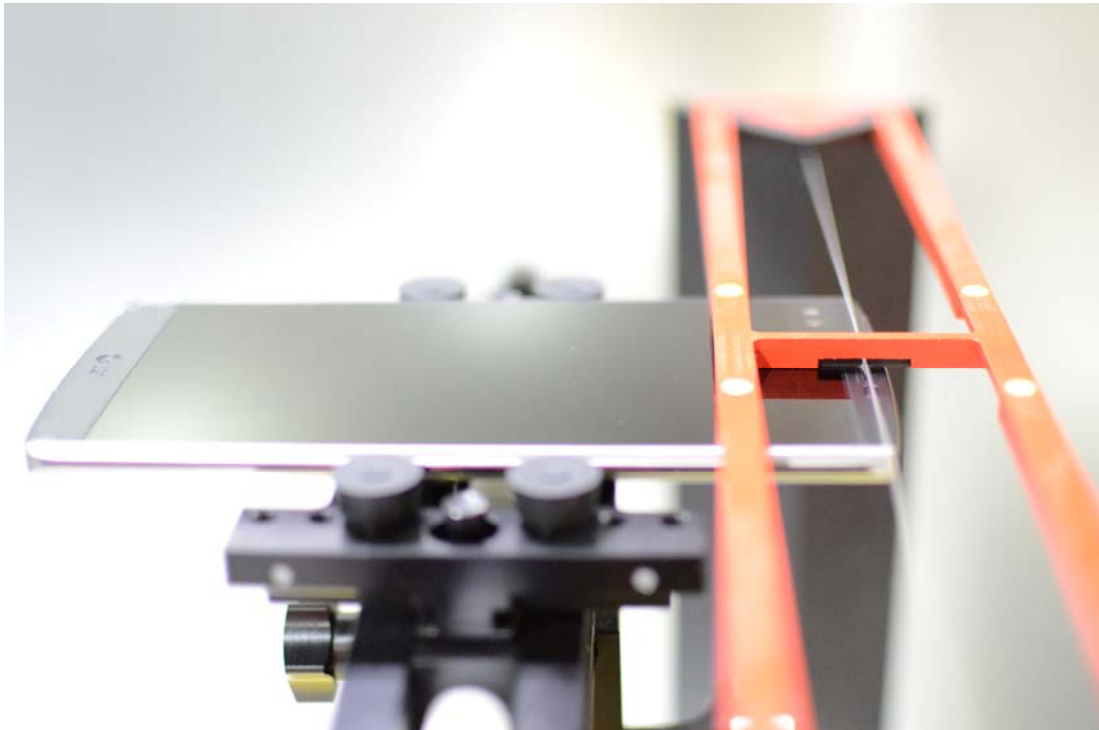
18. TEST PHOTOGRAPHS

See following Attached Pages for setup photographs.



FCC ID: ZNFH900	 PCTEST ENGINEERING LABORATORY, INC.	HAC (RF EMISSIONS) TEST REPORT	 LG	Reviewed by: Quality Manager
Filename: 0Y1508101512.ZNF	Test Dates: 08/10/2015 - 08/13/2015	EUT Type: Portable Handset	Page 76 of 78	



**Figure 18-1
Ear Reference Point HAC Phantom Alignment**



**Figure 18-2
HAC Phantom Plane Alignment**

FCC ID: ZNFH900		HAC (RF EMISSIONS) TEST REPORT	 Reviewed by: Quality Manager
Filename: 0Y1508101512.ZNF	Test Dates: 08/10/2015 - 08/13/2015	EUT Type: Portable Handset	Page 77 of 78

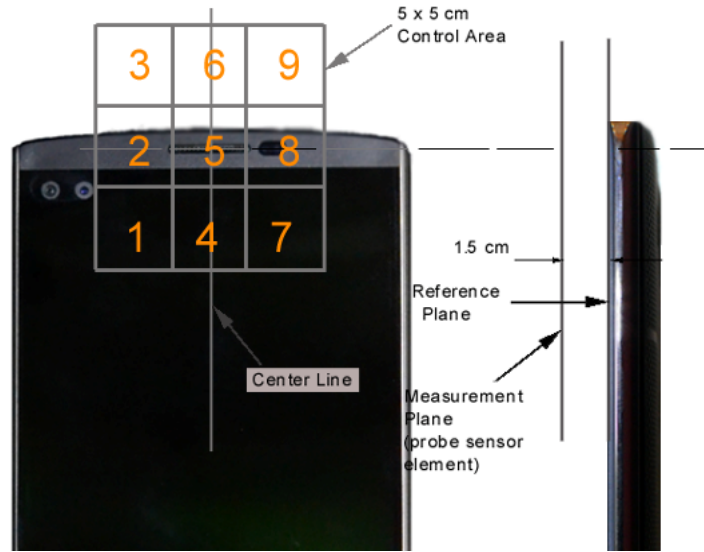




Figure 18-3 5x5 Scan grid above WD



Figure 18-4 E-Field WD Scan overlay

FCC ID: ZNFH900	 PCTEST ENGINEERING LABORATORY, INC.	HAC (RF EMISSIONS) TEST REPORT	 LG	Reviewed by: Quality Manager
Filename: 0Y1508101512.ZNF	Test Dates: 08/10/2015 - 08/13/2015	EUT Type: Portable Handset		Page 78 of 78