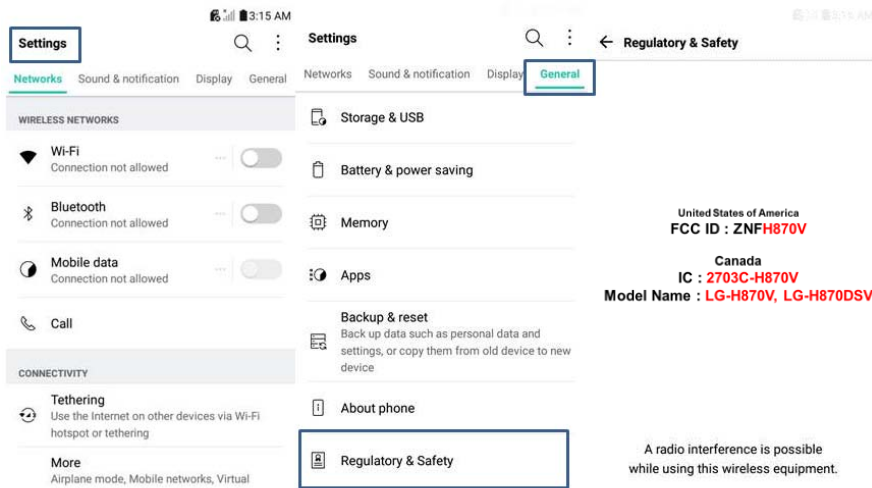


# Description of E-Label

## ❖ FCC/IC ID is applied by E-Label on the device



Setting Menu	
	Settings
Step 1	General
Step 2	Regulatory and Safety

## ❖ Instruction of E-Label on the user manual

### Regulatory information

For regulatory details, go to **Settings > General > Regulatory and safety** on your phone.

## ❖ FCC/IC ID is applied on packaging Label

**Model No: LG-H870V, LG-H870DSV**  
**FCC ID : ZNFH870V**  
**IC : 2703C-H870V**  
**S/N : XXXX**  
**Made in XXXX**  
**IMEI : XXXXXXXXXXXXXX**

### Note!

We, LG Electronics MobileComm USA, state that at the time of purchase, the FCC / ISED ID is readily and physically visible to the purchaser on the packaging Label per 2.925(d). So, The FCC / ISED ID will be able to survive normal shipping and handling so it is visible for inspection at the time of import.

We have programmed the e-label and it is not able to be modified by any third party.

Also, SIM Card in is not required to access the FCC / ISED ID number.