

SAR TEST REPORT

LG Electronics, MobileComm U.S.A., Inc.
1000 Sylvan Avenue, Englewood Cliffs NJ 07632

Date of Issue: February 06, 2015
Test Report No.: HCT-A-1502-F003-1
Test Site: HCT CO., LTD.

FCC ID:

ZNFH340F

Equipment Type: Cellular/PCS GSM/WCDMA/LTE Phone with WLAN and Bluetooth
Model Name: LG-H340f
Additional Model Name: LGH340f, H340f, LG-H340F, LGH340F, H340F, LG-H342f, LGH342f, H342f, LG-H342F, LGH342F, H342F, LG-H340AR, LGH340AR, H340AR
Testing has been carried out in accordance with: 47CFR §2.1093
ANSI/ IEEE C95.1 – 1992
IEEE 1528-2003
January 14, 2015 ~ January 23, 2015
Date of Test:

This device has been shown to be capable of compliance for localized specific absorption rate (SAR) for uncontrolled environment/general population exposure limits specified in FCC KDB procedures and had been tested in accordance with the measurement procedures specified in FCC KDB procedures.

I attest to the accuracy of data. All measurements reported herein were performed by me or were made under my supervision and are correct to the best of my knowledge and belief. I assume full responsibility for the completeness of these measurements and vouch for the qualifications of all persons taking them.

Tested By;



Yun-Jeang Heo
Test Engineer / SAR Team
Certification Division

Reviewer



Dong-Seob Kim
Technical Manager / SAR Team
Certification Division

Revision History

Rev.	Issue DATE	DESCRIPTION
HCT-A-1502-F003	Feb. 03, 2015	Initial Issue
HCT-A-1502-F003-1	Feb. 06, 2015	Add additional model names belows: (LG-H342f, LGH342f, H342f, LG-H342F, LGH342F, H342F, LG-H340AR, LGH340AR,H340AR) - Revised cover page. (Revised additional model names) - Revised Sec. 3 (Revised additional model names)

Table of Contents

1. INTRODUCTION	4
2. TEST METHODOLOGY	5
3. DESCRIPTION OF DEVICE.....	6
4. DESCRIPTION OF TEST EQUIPMENT	9
6. DESCRIPTION OF TEST POSITION.....	1 9
7. MEASUREMENT UNCERTAINTY	2 1
8. ANSI/ IEEE C95.1 - 1992 RF EXPOSURE LIMITS.....	2 2
9. SAR SYSTEM VALIDATION.....	2 3
10. SYSTEM VERIFICATION	2 4
11. RF CONDUCTED POWER MEASUREMENT	2 6
11.6 SAR Test Exclusions Applied	4 3
12. SAR Test configuration	4 5
13. SAR TEST DATA SUMMARY	4 6
13.1-1 Measurement Results (GSM850 Head SAR)	4 6
13.1-2 Measurement Results (GSM1900 Head SAR)	4 6
13.1-3 Measurement Results (WCDMA850 Head SAR).....	4 7
13.1-4 Measurement Results (WCDMA1900 Head SAR).....	4 7
13.1-5 Measurement Results (LTE Band 2 20MHz Head SAR)	4 8
13.1-6 Measurement Results (LTE Band 4 20MHz Head SAR)	4 8
13.1-7 Measurement Results (LTE Band 7 20MHz Head SAR)	4 9
13.1-8 Measurement Results (DTS Head SAR)	4 9
13.2-1 Measurement Results (GSM850 Hotspot SAR).....	5 0
13. 2-2 Measurement Results (GSM1900 Hotspot SAR).....	5 0
13.2-3 Measurement Results (WCDMA850 Hotspot SAR).....	5 1
13. 2-4 Measurement Results (WCDMA1900 Hotspot SAR).....	5 1
13.2-5 Measurement Results (LTE Band 2 20MHz Hotspot SAR)	5 2
13.2-6 Measurement Results (LTE Band 4 20MHz Hotspot SAR)	5 3
13.2-7 Measurement Results (LTE Band 7 20MHz Hotspot SAR)	5 3
13. 2-8 Measurement Results (WLAN Hotspot SAR)	5 4
13.3-1 Measurement Results (DTS Body-worn SAR).....	5 4
13.3-2 Measurement Results (Body-worn SAR).....	5 5
13.4 SAR Test Notes	5 6
14. SAR Measurement Variability and Uncertainty	5 8
15. SAR Summation Scenario	5 9
16. CONCLUSION.....	6 4
17. REFERENCES	6 5
Attachment 1. – SAR Test Plots	6 6
Attachment 2. – Dipole Verification Plots.....	9 3
Attachment 3. – Probe Calibration Data	1 0 6
Attachment 4. – Dipole Calibration Data	1 4 0

1. INTRODUCTION

The FCC has adopted the guidelines for evaluating the environmental effects of radio frequency radiation in ET Docket 93-62 on Aug. 6, 1996 to protect the public and workers from the potential hazards of RF emissions due to FCC-regulated portable devices.

The safety limits used for the environmental evaluation measurements are based on the criteria published by the American National Standards Institute (ANSI) for localized specific absorption rate (SAR) in IEEE/ANSI C95.1-1992 Standard for Safety Levels with Respect to Human Exposure to Radio Frequency Electromagnetic Fields, 3 kHz to 300 GHz. 1992 by the Institute of Electrical and Electronics Engineers, Inc., New York, New York 10017. The measurement procedure described in IEEE/ANSI C95.3-1992 Recommended Practice for the Measurement of Potentially Hazardous Electromagnetic Fields - RF and Microwave is used for guidance in measuring SAR due to the RF radiation exposure from the Equipment Under Test (EUT). These criteria for SAR evaluation are similar to those recommended by the National Council on Radiation Protection and Measurements (NCRP) in Biological Effects and Exposure Criteria for Radio frequency Electromagnetic Fields," NCRP Report No. 86 NCRP, 1986, Bethesda, MD 20814. SAR is a measure of the rate of energy absorption due to exposure to an RF transmitting source. SAR values have been related to threshold levels for potential biological hazards.

SAR Definition

Specific Absorption Rate (SAR) is defined as the time derivative of the incremental electromagnetic energy (dW) absorbed by (dissipated in) an incremental mass (dm) contained in a volume element (dV) of a given density (ρ). It is also defined as the rate of RF energy absorption per unit mass at a point in an absorbing body.

$$SAR = \frac{d}{dt} \left(\frac{dU}{dm} \right) = \frac{d}{dt} \left(\frac{dU}{\rho dV} \right)$$

Figure 1. SAR Mathematical Equation

SAR is expressed in units of Watts per Kilogram (W/kg)

$$SAR = \sigma E^2 / \rho$$

Where:

- σ = conductivity of the tissue-simulant material (S/m)
- ρ = mass density of the tissue-simulant material (kg/m³)
- E = Total RMS electric field strength (V/m)

NOTE: The primary factors that control rate of energy absorption were found to be the wavelength of the incident field in relations to the dimensions and geometry of the irradiated organism, the orientation of the organism in relation to the polarity of field vectors, the presence of reflecting surfaces, and whether conductive contact is made by the organism with a ground plane.

2. TEST METHODOLOGY

The tests documented in this report were performed in accordance with FCC KDB Procedure, IEEE Standard 1528-2003 & IEEE 1528a-2005 and the following published KDB procedures.

- FCC KDB Publication 941225 D01 3G SAR Procedures v03
- FCC KDB Publication 941225 D06 Hot Spot SAR v02
- FCC KDB Publication 941225 D05 SAR for LTE Devices v02r03
- FCC KDB Publication 248227 D01 SAR Consideration for 802.11 Devices v01r02
- FCC KDB Publication 447498 D01 General SAR Guidance v05r02
- FCC KDB Publication 648474 D04 Handset SAR v01r02
- FCC KDB Publication 865664 D01 SAR measurement 100 MHz to 6 GHz v01r03
- FCC KDB Publication 865664 D02 SAR Reporting v01r01
- October 2013 TCB Workshop Notes (GPRS testing criteria)

3. DESCRIPTION OF DEVICE

Environmental evaluation measurements of specific absorption rate (SAR) distributions in emulated human head and body tissues exposed to radio frequency (RF) radiation from wireless portable devices for compliance with the rules and regulations of the U.S. Federal Communications Commission (FCC).

EUT Type	Cellular/PCS GSM/WCDMA/LTE Phone with WLAN and Bluetooth					
FCC ID:	ZNFH340F					
Model:	LG-H340f					
Additional Model Name:	LGH340f, H340f, LG-H340F, LGH340F, H340F, LG-H342f, LGH342f, H342f, LG-H342F, LGH342F, H342F, LG-H340AR, LGH340AR, H340AR					
Trade Name:	LG Electronics, MobileComm U.S.A., Inc.					
Application Type:	Certification					
Production Unit or Identical Prototype:	Prototype					
Max. SAR:	Band	Tx Frequency (MHz)	Equipment Class	Reported 1g SAR (W/Kg)		
				Head	Body-Worn	Hotspot
	GSM/GPRS /EDGE 850	824.2 - 848.8	PCE	0.96	1.18	1.18
	GSM/GPRS/ EDGE 1900	1 850.2 -1 909.8	PCE	0.70	0.55	0.77
	WCDMA 850	826.4 - 846.6	PCE	0.49	0.69	0.69
	WCDMA 1900	1 852.4 – 1 907.6	PCE	1.12	1.11	1.18
	LTE 2	1 850.7 ~ 1 909.3	PCE	0.90	1.10	1.17
	LTE 4	1 710.7 – 1 754.3	PCE	0.94	1.05	1.28
	LTE 7	2 502.5 – 2 567.5	PCE	1.12	0.67	0.67
	802.11b	2 412.0 - 2 462.0	DTS	0.21	0.02	0.02
	Bluetooth	2 402 – 2 480	DSS/DTS	-	0.17*	-
	Simultaneous SAR per KDB 690783 D01v01r03				1.32	1.35
Date(s) of Tests:	January 14, 2015 ~ January 23, 2015					
Antenna Type:	Integral Antenna					
GPRS/EDGE:	Multi-slot Class 33,					
Key Feature(s)	This device supports Mobile Hotspot.					

* Note : BT Body-worn SAR value is estimate SAR value that should not be reported standalone SAR on grants of

equipment approval.

3.1 KDB 941225 LTE information

Item.	Description
Frequency Range:	Band 2: 1 850.7 MHz ~ 1 909.3 MHz , Band 4: 1 710.7 MHz – 1 754.3 MHz
	Band 7: 2 502.5 MHz ~ 2 567.5 MHz
Channel Bandwidth:	Band 2: 1.4 MHz, 3 MHz, 5 MHz, 10 MHz, 15 MHz, 20 MHz
	Band 4: 1.4 MHz, 3 MHz, 5 MHz, 10 MHz, 15 MHz, 20 MHz
	Band 7: 5 MHz, 10 MHz, 15MHz, 20MHz
Channel Number & Frequency:	Band 2
	1.4 MHz 3 MHz 5 MHz 10 MHz 15 MHz 20 MHz
	Ch. Freq. (MHz) Ch. Freq. (MHz) Ch. Freq. (MHz) Ch. Freq. (MHz) Ch. Freq. (MHz) Ch. Freq. (MHz)
	18607 1850.7 18615 1851.5 18625 1852.5 18650 1855 18675 1857.5 18700 1860
	18900 1880 18900 1880 18900 1880 18900 1880 18900 1880 18900 1880
	19193 1909.3 19185 1908.5 19175 1907.5 19150 1905 19125 1902.5 19100 1900
	Band 4
	1.4 MHz 3 MHz 5 MHz 10 MHz 15 MHz 20 MHz
	Ch. Freq. (MHz) Ch. Freq. (MHz) Ch. Freq. (MHz) Ch. Freq. (MHz) Ch. Freq. (MHz) Ch. Freq. (MHz)
	19957 1 710.7 19965 1 711.5 19975 1 712.5 20000 1 715 20025 1 717.5 20050 1 720
	20175 1 732.5 20175 1 732.5 20175 1 732.5 20175 1 732.5 20175 1 732.5 20175 1 732.5
	20393 1 754.3 20385 1 753.5 20375 1 752.5 20350 1 750 20325 1 747.5 20300 1 745
	Band 7
	5 MHz 10 MHz 15 MHz 20 MHz
	Ch. Freq. (MHz) Ch. Freq. (MHz) Ch. Freq. (MHz) Ch. Freq. (MHz)
	20775 2 502.5 20800 2 505 20825 2 507.5 20850 2 510
	21100 2 535 21100 2 535 21100 2 535 21100 2 535
	21425 2 567.5 21400 2 565 21375 2 562.5 21350 2 560

Item.	Description
UE Category & Uplink Modulation	UE Category 3 QPSK, 16QAM
Description of the LTE Transmitter & antenna	<p>This model has two Tx paths.</p> <ul style="list-style-type: none"> - , One is for GSM and WCDMA and LTE. It can not transmit simultaneously. - The other is for BT & WLAN. It can not transmit simultaneously. <p>Please find the section 12</p>
LTE voice/data requirements	<p>Data Only, LTE voice is available via VoIP. Considering the users may install 3rd party software to enable VoIP, LTE Head SAR is also evaluated.</p>
Identify if MPR is optional or mandatory optional or mandatory	<p>The EUT incorporates MPR as per 3GPP TS 36.101 sec. 6.2.3 ~ 6.2.5 The MPR is permanently built-in by design as a mandatory. A-MPR is not implemented in the EUT. See section 11.4 RF output power measurements in the SAR report.</p>
Maximum average conducted output power(dBm) Identify all other U.S. wireless operating modes, device exposure configurations and frequency bands	<p>GSM850/ GSM1900, WCDMA850/1900, LTE Band 2, LTE Band 4, and LTE Band 7 : Head & Body SAR are required.</p>
Maximum average conducted output power for other wireless mode and frequency	<p>See section 11 RF output power measurements in the SAR report.</p>
Simultaneous Transmission condition	<p>This device supports simultaneous transmission. Please find the section 15.</p>
Power reduction explanation	<p>This device doesn't implements power reduction.</p>
Description of the test equipment, software, etc.	<p>LTE SAR Testing was performed using a CMW500. UE transmits with maximum output power during SAR testing.</p>

4. DESCRIPTION OF TEST EQUIPMENT

4.1 SAR MEASUREMENT SETUP

These measurements are performed using the DASY4 automated dosimetric assessment system. It is made by Schmid & Partner Engineering AG (SPEAG) in Zurich, Switzerland. It consists of high precision robotics system (Staubli), robot controller, Pentium III computer, near-field probe, probe alignment sensor, and the generic twin phantom containing the brain equivalent material. The robot is a six-axis industrial robot performing precise movements to position the probe to the location (points) of maximum electromagnetic field (EMF) (see Figure.2).

A cell controller system contains the power supply, robot controller, teach pendant (Joystick), and remote control, is used to drive the robot motors. The PC consists of the HP Pentium IV 3.0 GHz computer with Windows XP system and SAR Measurement Software DASY4, A/D interface card, monitor, mouse, and keyboard. The Staubli Robot is connected to the cell controller to allow software manipulation of the robot. A data acquisition electronic (DAE) circuit performs the signal amplification, signal multiplexing, AD-conversion, offset measurements, mechanical surface detection, collision detection, etc. is connected to the Electro-optical coupler (EOC). The EOC performs the conversion from the optical into digital electric signal of the DAE and transfers data to the PC plug-in card.

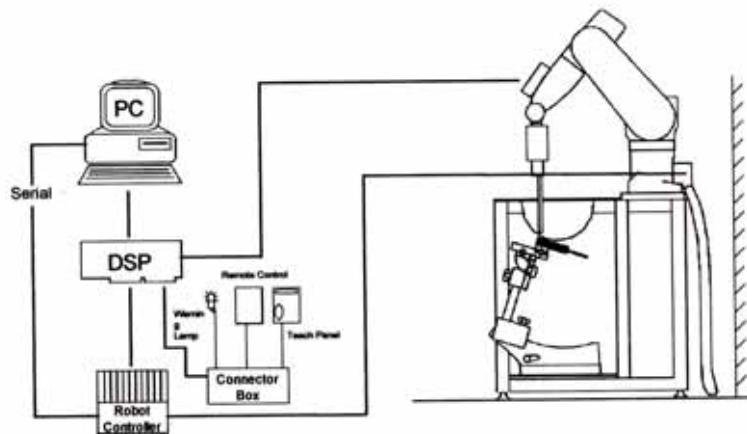


Figure 2. HCT SAR Lab. Test Measurement Set-up

The DAE4 consists of a highly sensitive electrometer-grade preamplifier with auto-zeroing, a channel and gain-switching multiplexer, a fast 16 bit AD-converter and a command decoder and control logic unit. Transmission to the PC-card is accomplished through an optical downlink for data and status information and an optical uplink for commands and clock lines. The mechanical probe mounting device includes two different sensor systems for frontal and sidewise probe contacts. They are also used for mechanical surface detection and probe collision detection. The robot uses its own controller with a built in VME-bus computer. The system is described in detail in.

4.2 DASY E-FIELD PROBE SYSTEM

4.1 ET3DV6 Probe Specification

Construction	Symmetrical design with triangular core Built-in optical fiber for surface detection System Built-in shielding against static charges
Calibration	In air from 10 MHz to 2.5 GHz In brain and muscle simulating tissue at Frequencies of 450 MHz, 900 MHz and 1.8 GHz (accuracy: 8 %)
Frequency	10 MHz to > 3 GHz; Linearity: ± 0.2 dB (30 MHz to 3 GHz)
Directivity	± 0.2 dB in brain tissue (rotation around probe axis) ± 0.4 dB in brain tissue (rotation normal probe axis)
Dynamic	5 μ W/g to > 100 mW/g;
Range Linearity:	± 0.2 dB
Surface Detection	± 0.2 mm repeatability in air and clear liquids over diffuse reflecting surfaces.
Dimensions	Overall length: 330 mm Tip length: 16 mm Body diameter: 12 mm Tip diameter: 6.8 mm Distance from probe tip to dipole centers: 2.7 mm
Application	General dissymmetry up to 3 GHz Compliance tests of WCDMA/LTE Phones Fast automatic scanning in arbitrary phantoms



Figure 3. Photograph of the probe and the Phantom

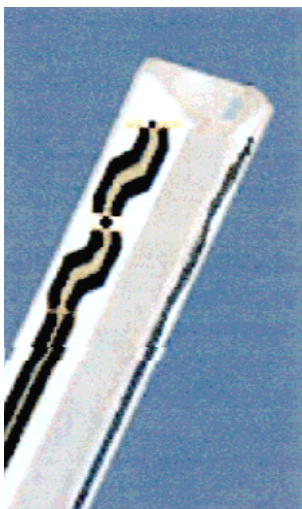


Figure 4. ET3DV6 E-field Probe

The SAR measurements were conducted with the dosimetric probe ET3DV6, designed in the classical triangular configuration and optimized for dosimetric evaluation. The probe is constructed using the thick film technique; with printed resistive lines on ceramic substrates. The probe is equipped with an optical multifiber line ending at the front of the probe tip. It is connected to the EOC box on the robot arm and provides an automatic detection of the phantom surface. Half of the fibers are connected to a pulsed infrared transmitter, the other half to a synchronized receiver. As the probe approaches the surface, the reflection from the surface produces a coupling from the transmitting to the receiving fibers. This reflection increases first during the approach, reaches a maximum and then decreases. If the probe is flatly touching the surface, the coupling is zero. The distance of the coupling maximum to the surface is independent of the surface reflectivity and largely independent of the surface to probe angle. The DASY4 software reads the reflection during a software approach and looks for the maximum using a 2nd order fitting. The approach is stopped at reaching the maximum.

4.2.1 EX3DV4 Probe Specification

Construction	Symmetrical design with triangular core Interleaved sensors Built-in shielding against static charges PEEK enclosure material (resistant to organic solvents, e.g., DGBE)
Calibration	Basic Broad Band Calibration in air Conversion Factors (CF) for HSL 900 and HSL 1810 Additional CF for other liquids and frequencies upon request
Frequency	10 MHz to 4 GHz; Linearity: ± 0.2 dB (30 MHz to 4 GHz)
Directivity	± 0.2 dB in HSL (rotation around probe axis) ± 0.3 dB in tissue material (rotation normal to probe axis)
Dynamic Range	5 μ W/g to > 100 mW/g; Linearity: ± 0.2 dB
Dimensions	Overall length: 330 mm (Tip: 20 mm) Tip diameter: 3.9 mm (Body: 12 mm) Distance from probe tip to dipole centers: 2.0 mm
Application	General dosimetry up to 4 GHz Dosimetry in strong gradient fields Compliance tests of mobile phones



Figure 5. Photograph of the probe and the Phantom

The SAR measurements were conducted with the dosimetric probe EX3DV4, designed in the classical triangular configuration and optimized for dosimetric evaluation. The probe is constructed using the thick film technique; with printed resistive lines on ceramic substrates. The probe is equipped with an optical multifiber line ending at the front of the probe tip. It is connected to the EOC box on the robot arm and provides an automatic detection of the phantom surface. Half of the fibers are connected to a pulsed infrared transmitter, the other half to a synchronized receiver. As the probe approaches the surface, the reflection from the surface produces a coupling from the transmitting to the receiving fibers. This reflection increases first during the approach, reaches a maximum and then decreases. If the probe is flatly touching the surface, the coupling is zero. The distance of the coupling maximum to the surface is independent of the surface reflectivity and largely independent of the surface to probe angle. The DASY4 software reads the reflection during a software approach and looks for the maximum using a 2nd order fitting. The approach is stopped at reaching the maximum.



Figure 6. EX3DV4 E-field Probe

4.3 PROBE CALIBRATION PROCESS

4.3.1 E-Probe Calibration

Each probe is calibrated according to a dosimetric assessment procedure with an accuracy better than $\pm 10\%$. The spherical isotropy was evaluated with the proper procedure and found to be better than ± 0.25 dB. The sensitivity parameters (NormX, NormY, NormZ), the diode compression parameter (DCP) and the conversion factor (ConvF) of the probe is tested.

The free space E-field from amplified probe outputs is determined in a test chamber. This is performed in a TEM cell for frequencies below 1 GHz, and in a waveguide above 1 GHz for free space. For the free space calibration, the probe is placed in the volumetric center of the cavity and at the proper orientation with the field. The probe is then rotated 360 degrees.

E-field temperature correlation calibration is performed in a flat phantom filled with the appropriate simulated brain tissue. The measured free space E-field in the medium correlates to temperature rise in a dielectric medium. For temperature correlation calibration a RF transparent thermistor-based temperature probe is used in conjunction with the E-field probe.

$$SAR = C \frac{\Delta T}{\Delta t}$$

where:

Δt = exposure time (30 seconds),

C = heat capacity of tissue (brain or muscle),

ΔT = temperature increase due to RF exposure.

SAR is proportional to $\Delta T/\Delta t$, the initial rate of tissue heating, before thermal diffusion takes place.

Now it's possible to quantify the electric field in the simulated tissue by equating the thermally derived SAR to the E-field;

$$SAR = \frac{|E^2| \cdot \sigma}{\rho}$$

where:

σ = simulated tissue conductivity,

ρ = Tissue density (1.25 g/cm^3 for brain tissue)

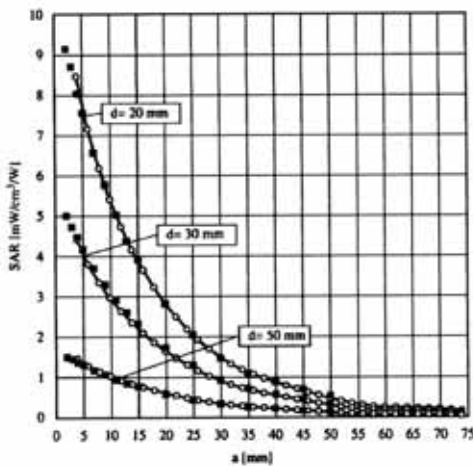


Figure 7. E-Field and Temperature measurements at 900 MHz

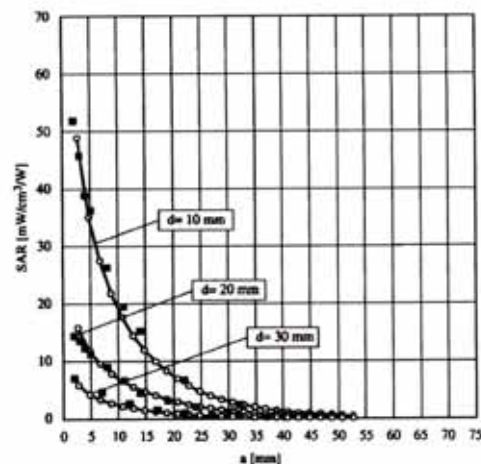


Figure 8. E-Field and temperature measurements at 1.8 GHz

4.3.2 Data Extrapolation

The DASY4 software automatically executes the following procedures to calculate the field units from the microvolt readings at the probe connector. The first step of the evaluation is a linearization of the filtered input signal to account for the compression characteristics of the detector diode. The compensation depends on the input signal, the diode type and the DC-transmission factor from the diode to the evaluation electronics. If the exciting field is pulsed, the crest factor of the signal must be known to correctly compensate for peak power. The formula for each channel can be given like below;

$$V_i = U_i + U_i^2 \cdot \frac{cf}{dcp_i}$$

with

- V_i = compensated signal of channel i (i=x,y,z)
- U_i = input signal of channel i (i=x,y,z)
- cf = crest factor of exciting field (DASY parameter)
- dcp_i = diode compression poing (DASY parameter)

From the compensated input signals the primary field data for each channel can be evaluated:

E-field probes: with

$$E_i = \sqrt{\frac{V_i}{Norm_i \cdot ConvF}}$$

- V_i = compensated signal of channel i (i=x,y,z)
- Norm_i = sensor sensitivity of channel i (i=x,y,z)
μV/(V/m)² for E-field probes
- ConvF = sensitivity of enhancement in solution
- E_i = electric field strength of channel i in V/m

The RSS value of the field components gives the total field strength (Hermetian magnitude):

$$E_{tot} = E_x^2 + E_y^2 + E_z^2$$

The primary field data are used to calculate the derived field units.

$$SAR = E_{tot}^2 \cdot \frac{\sigma}{\rho \cdot 1000}$$

with

- SAR = local specific absorption rate in W/g
- E_{tot} = total field strength in V/m
- σ = conductivity in [mho/m] or [Siemens/m]
- ρ = equivalent tissue density in g/cm³

The power flow density is calculated assuming the excitation field to be a free space field.

$$P_{pwe} = \frac{E_{tot}^2}{3770}$$

with

- P_{pwe} = equivalent power density of a plane wave in w/cm²
- E_{tot} = total electric field strength in V/m

4.4 SAM Phantom

The shell corresponds to the specifications of the Specific Anthropomorphic Mannequin (SAM) phantom defined in IEEE 1528 and IEC 62209-1. It enables the dosimetric evaluation of left and right hand phone usage as well as body mounted usage at the flat phantom region. A cover prevents evaporation of the liquid. Reference markings on the phantom allow the complete setup of all predefined phantom positions and measurement grids by teaching three points with the robot.



Figure 9. SAM Phantom

Shell Thickness	2.0 mm ± 0.2 mm (6 ± 0.2 mm at ear point)
Filling Volume	about 25 L
Dimensions	810 mm x 1 000 mm x 500 mm (H x L x W)

Triple Modular Phantom consists of three identical modules which can be installed and removed separately without emptying the liquid. It includes three reference points for phantom installation. Covers prevent evaporation of the liquid. Phantom material is resistant to DGBE based tissue simulating liquids. The MFP V5.1 will be delivered including wooden support only (non-standard SPEAG support).

Applicable for system performance check from 700 MHz to 6 GHz (MFP V5.1C) or 800 MHz - 6 GHz (MFP V5.1A) as well as dosimetric evaluations for body-worn operation.

Shell Thickness	2.0 mm ± 0.2 mm
Filling Volume	approx. 9.2 L
Dimensions	830 mm x 500 mm (L x W)



Figure 10. MFP V5.1 Triple Modular Phantom

4.5 Device Holder for Transmitters

In combination with the SAM Phantom V 4.0, the Mounting Device (POM) enables the rotation of the mounted transmitter in spherical coordinates whereby the rotation points is the ear opening. The devices can be easily, accurately, and repeatably positioned according to the FCC and CENELEC specifications. The device holder can be locked at different phantom locations (left head, right head, flat phantom).

Note: A simulating human hand is not used due to the complex anatomical and geometrical structure of the hand that may produce an infinite number of configurations. To produce the Worst-case condition (the hand absorbs antenna output power), the hand is omitted during the tests.



Figure 11. Device Holder

4.6 Tissue Simulating Mixture Characterization

The mixture is characterized to obtain proper dielectric constant (permittivity) and conductivity of the tissue of interest. The tissue dielectric parameters recommended in IEEE 1528 and IEC 62209 have been used as targets for the compositions, and are to match within 5%, per the FCC recommendations.

Ingredients (% by weight)	Frequency (MHz)							
	835		1 900		2 450 ~ 2 700		5 200 - 5 800	
Tissue Type	Head	Body	Head	Body	Head	Body	Head	Body
Water	40.45	53.06	54.9	70.17	71.88	73.2	65.52	78.66
Salt (NaCl)	1.45	0.94	0.18	0.39	0.16	0.1	0.0	0.0
Sugar	57.0	44.9	0.0	0	0.0	0.0	0.0	0.0
HEC	1.0	1.0	0.0	0	0.0	0.0	0.0	0.0
Bactericide	0.1	0.1	0.0	0	0.0	0.0	0.0	0.0
Triton X-100	0.0	0.0	0.0	0.0	19.97	0.0	17.24	10.67
DGBE	0.0	0.0	44.92	29.44	7.99	26.7	0.0	0.0
Diethylene glycol hexyl ether	-	-	-	-	-	-	17.24	10.67

Salt: 99 % Pure Sodium Chloride Sugar: 98 % Pure Sucrose
 Water: De-ionized, 16M resistivity HEC: Hydroxyethyl Cellulose
 DGBE: 99 % Di(ethylene glycol) butyl ether,[2-(2-butoxyethoxy) ethanol]
 Triton X-100(ultra pure): Polyethylene glycol mono[4-(1,1,3,3-tetramethylbutyl)phenyl] ether

Table 4.1 Composition of the Tissue Equivalent Matter

4.7 SAR TEST EQUIPMENT

Manufacturer	Type / Model	S/N	Calib. Date	Calib.Interval	Calib.Due
SPEAG	SAM Phantom	-	N/A	N/A	N/A
SPEAG	Triple Modular Phantom	-	N/A	N/A	N/A
Staubli	Robot RX90B L	F01/5K09A1/A/01	N/A	N/A	N/A
Staubli	Robot ControllerCS7MB	3403-91935	N/A	N/A	N/A
HP	Pavilion t000_puffer	KRJ51201TV	N/A	N/A	N/A
SPEAG	Light Alignment Sensor	265	N/A	N/A	N/A
Staubli	Teach Pendant (Joystick)	D221340.01	N/A	N/A	N/A
SPEAG	DAE4	1225	Mar. 24, 2014	Annual	Mar. 24, 2015
SPEAG	DAE4	911	Feb. 25, 2014	Annual	Feb. 25, 2015
SPEAG	DAE4	652	Mar. 26, 2014	Annual	Mar. 26, 2015
SPEAG	E-Field Probe ET3DV6	1630	Apr. 21, 2014	Annual	Apr. 21, 2015
SPEAG	E-Field Probe EX3DV4	3903	Aug. 28, 2014	Annual	Aug. 28, 2014
SPEAG	E-Field Probe EX3DV4	3863	Jul. 24, 2014	Annual	Jul. 24, 2015
SPEAG	Dipole D835V2	490	May 16,2014	Annual	May 16,2015
SPEAG	Dipole D1800V2	2d006	Mar.24, 2014	Annual	Mar.24, 2015
SPEAG	Dipole D1900V2	5d061	Jul. 23, 2014	Annual	Jul. 23, 2015
SPEAG	Dipole D2450V2	743	Jul. 24, 2014	Annual	Jul. 24, 2015
SPEAG	Dipole D2600V2	1015	Apr.23, 2014	Annual	Apr.23, 2015
Agilent	Power Meter(F) E4419B	MY41291386	Oct. 27, 2014	Annual	Oct. 27, 2015
Agilent	Power Sensor(G) 8481	MY41090680	Oct. 27, 2014	Annual	Oct. 27, 2015
HP	Dielectric Probe Kit 85070C	00721521	CBT		
HP	Dual Directional Coupler	16072	Oct. 27, 2014	Annual	Oct. 27, 2015
Agilent	Base Station E5515C	GB44400269	Feb. 10, 2014	Annual	Feb. 10, 2015
HP	Signal Generator 8664A	3744A02069	Oct. 27, 2014	Annual	Oct. 27, 2015
Hewlett Packard	11636B/Power Divider	58698	Mar. 03. 2014	Annual	Mar. 03. 2015
Agilent	N9020A/ SIGNAL	MY50510407	Mar. 25, 2014	Annual	Mar. 25, 2015
TESCOM	TC-3000C / BLUETOOTH	3000C000276	Apr. 11, 2014	Annual	Apr. 11. 2015
HP	Network Analyzer 8753ES	JP39240221	Mar. 21, 2014	Annual	Mar. 21, 2015
R&S	Base Station CMW500	100990	Dec. 05, 2014	Annual	Dec. 05, 2015

NOTE:

- The E-field probe was calibrated by SPEAG, by the waveguide technique procedure. Dipole Verification measurement is performed by HCT Lab. before each test. The brain/body simulating material is calibrated by HCT using the dielectric probe system and network analyzer to determine the conductivity and permittivity (dielectric constant) of the brain/body-equivalent material.
- CBT(Calibrating Before Testing). Prior to testing, the dielectric probe kit was calibrated via the network analyzer, with the specified procedure(calibrated in pure water) and calibration kit(standard) short circuit, before the dielectric measurement. The specific procedure and calibration kit are provided by Agilent

5. SAR MEASUREMENT PROCEDURE

The evaluation was performed with the following procedure:

1. The SAR value at a fixed location above the ear point was measured and was used as a reference value for assessing the power drop.
2. The SAR distribution at the exposed side of the head was measured at a distance of 3.9 mm from the inner surface of the shell. The area covered the entire dimension of the head and the horizontal grid spacing was 15 mm x 15 mm. Based on this data, the area of the maximum absorption was determined by spline interpolation.
3. Around this point, a volume of 32 mm x 32 mm x 30 mm was assessed by measuring 5 x 5 x 7 points. On this basis of this data set, the spatial peak SAR value was evaluated with the following procedure:
 - a. The data at the surface were extrapolated, since the center of the dipoles is 2.7 mm away from the tip of the probe and the distance between the surface and the lowest measuring point is 1.2 mm. The extrapolation was based on a least square algorithm. A polynomial of the fourth order was calculated through the points in z-axes. This polynomial was then used to evaluate the points between the surface and the probe tip.
 - b. The maximum interpolated value was searched with a straight-forward algorithm. Around this maximum the SAR values averaged over the spatial volumes (1 g or 10 g) were computed using the 3D-Spline interpolation algorithm. The 3D-spline is composed of three one-dimensional splines with the "Not a knot" condition (in x, y, and z directions. The volume was integrated with the trapezoidal algorithm. One thousand points (10 x 10 x 10) were interpolated to calculate the average.
 - c. All neighboring volumes were evaluated until no neighboring volume with a higher average value was found.
4. The SAR value, at the same location as procedure #1, was re-measured. If the value changed by more than 5 %, the evaluation is repeated.

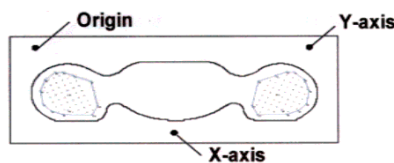


Figure 12. SAR Measurement Point in Area Scan

First Area Scan is used to locate the approximate location(s) of the local peak SAR value(s). The measurement grid within an Area Scan is defined by the grid extend, grid step size and grid offset. Next, in order to determine the EM field distribution in a three-dimensional spatial extension, Zoom Scan is required. The Zoom Scan is performed around the highest E-field value to determine the averaged SASR-distribution over 10g. Area scan and zoom scan resolution setting follow KDB 865664 D01v01r03 quoted below

		≤ 3 GHz	> 3 GHz
Maximum distance from closest measurement point (geometric center of probe sensors) to phantom surface		5 ± 1 mm	$\frac{1}{2} \cdot \delta \cdot \ln(2) \pm 0.5$ mm
Maximum probe angle from probe axis to phantom surface normal at the measurement location		$30^\circ \pm 1^\circ$	$20^\circ \pm 1^\circ$
Maximum area scan spatial resolution: $\Delta x_{Area}, \Delta y_{Area}$		≤ 2 GHz: ≤ 15 mm 2 – 3 GHz: ≤ 12 mm	3 – 4 GHz: ≤ 12 mm 4 – 6 GHz: ≤ 10 mm
		When the x or y dimension of the test device, in the measurement plane orientation, is smaller than the above, the measurement resolution must be \leq the corresponding x or y dimension of the test device with at least one measurement point on the test device.	
Maximum zoom scan spatial resolution: $\Delta x_{Zoom}, \Delta y_{Zoom}$		≤ 2 GHz: ≤ 8 mm 2 – 3 GHz: ≤ 5 mm*	3 – 4 GHz: ≤ 5 mm* 4 – 6 GHz: ≤ 4 mm*
Maximum zoom scan spatial resolution, normal to phantom surface	uniform grid: $\Delta z_{Zoom}(n)$	≤ 5 mm	3 – 4 GHz: ≤ 4 mm 4 – 5 GHz: ≤ 3 mm 5 – 6 GHz: ≤ 2 mm
	graded grid $\Delta z_{Zoom}(1)$: between 1 st two points closest to phantom surface	≤ 4 mm	3 – 4 GHz: ≤ 3 mm 4 – 5 GHz: ≤ 2.5 mm 5 – 6 GHz: ≤ 2 mm
	$\Delta z_{Zoom}(n>1)$: between subsequent points	$\leq 1.5 \cdot \Delta z_{Zoom}(n-1)$	
Minimum zoom scan volume	x, y, z	≥ 30 mm	3 – 4 GHz: ≥ 28 mm 4 – 5 GHz: ≥ 25 mm 5 – 6 GHz: ≥ 22 mm
<p>Note: δ is the penetration depth of a plane-wave at normal incidence to the tissue medium; see draft standard IEEE P1528-2011 for details.</p> <p>* When zoom scan is required and the <i>reported</i> SAR from the area scan based <i>1-g SAR estimation</i> procedures of KDB 447498 is ≤ 1.4 W/kg, ≤ 8 mm, ≤ 7 mm and ≤ 5 mm zoom scan resolution may be applied, respectively, for 2 GHz to 3 GHz, 3 GHz to 4 GHz and 4 GHz to 6 GHz.</p>			

6. DESCRIPTION OF TEST POSITION

6.1 HEAD POSITION

The device was placed in a normal operating position with the Point A on the device, as illustrated in following drawing, aligned with the location of the RE(ERP) on the phantom. With the ear-piece pressed against the head, the vertical center line of the body of the handset was aligned with an imaginary plane consisting of the RE, LE and M. While maintaining these alignments, the body of the handset was gradually moved towards the cheek until any point on the mouth-piece or keypad contacted the cheek. This is a cheek/touch position. For ear/tilt position, while maintain the device aligned with the BM and FN lines, the device was pivot against ERP back for 15° or until the device antenna touch the phantom. Please refer to IEEE 1528-2003 illustration below.

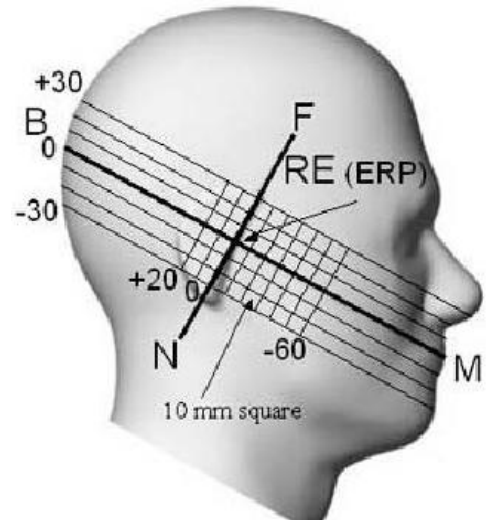


Figure 13. Side view of the phantom

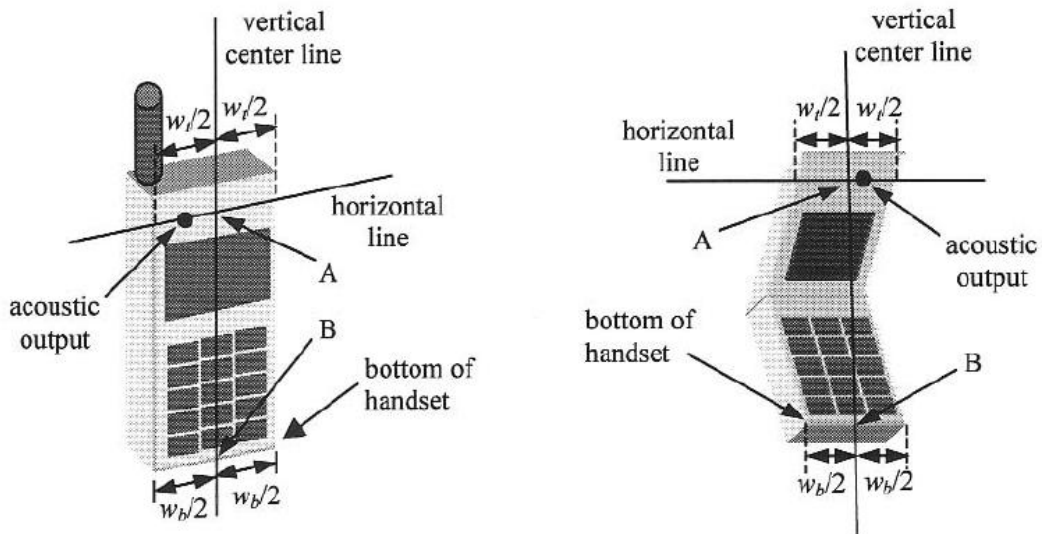


Figure 14. Handset vertical and horizontal reference lines

6.2 Body Holster/Belt Clip Configurations

Body-worn operating configurations are tested with the belt-clips and holsters attached to the device and positioned against a flat phantom in a normal use configuration. A device with a headset output is tested with a headset connected to the device. Body dielectric parameters are used.

Accessories for Body-worn operation configurations are divided into two categories: those that do not contain metallic components and those that contain metallic components. When multiple accessories that do not contain metallic components are supplied with the device, the device is tested with only the accessory that dictates the closest spacing to the body. Then multiple accessories that contain metallic components are tested with each accessory. If multiple accessory share an identical metallic component (i.e. the same metallic belt-clip used with different holsters with no other metallic components) only the accessory that dictates the closest spacing to the body is tested.

Body-worn accessories may not always be supplied or available as options for some Devices intended to be authorized for body-worn use. In this case, a test configuration with a separation distance between the back of the device and the flat phantom is used.

Since this EUT does not supply any body worn accessory to the end user a distance of 1.0 cm from the EUT back surface to the liquid interface is configured for the generic test.

"See the Test SET-UP Photo"

Transmitters that are designed to operate in front of a person's face, as in push-to-talk configurations, are tested for SAR compliance with the front of the device positioned to face the flat phantom. For devices that are carried next to the body such as a shoulder, waist or chest-worn transmitters, SAR compliance is tested with the accessory(ies), Including headsets and microphones, attached to the device and positioned against a flat phantom in a normal use configuration.

In all cases SAR measurements are performed to investigate the worst-case positioning. Worstcase positioning is then documented and used to perform Body SAR testing.

7. MEASUREMENT UNCERTAINTY

Error Description	Tol (± %)	Prob. dist.	Div.	C_i	Standard Uncertainty (± %)	V_{eff}
1. Measurement System						
Probe Calibration	6.00	N	1	1	6.00	
Axial Isotropy	4.70	R	1.73	0.7	1.90	
Hemispherical Isotropy	9.60	R	1.73	0.7	3.88	
Boundary Effects	1.00	R	1.73	1	0.58	
Linearity	4.70	R	1.73	1	2.71	
System Detection Limits	1.00	R	1.73	1	0.58	
Readout Electronics	0.30	N	1.00	1	0.30	
Response Time	0.8	R	1.73	1	0.46	
Integration Time	2.6	R	1.73	1	1.50	
RF Ambient Conditions	3.00	R	1.73	1	1.73	
Probe Positioner	0.40	R	1.73	1	0.23	
Probe Positioning	2.90	R	1.73	1	1.67	
Max SAR Eval	1.00	R	1.73	1	0.58	
2. Test Sample Related						
Device Positioning	2.90	N	1.00	1	2.90	145
Device Holder	3.60	N	1.00	1	3.60	5
Power Drift	5.00	R	1.73	1	2.89	
3. Phantom and Setup						
Phantom Uncertainty	4.00	R	1.73	1	2.31	
Liquid Conductivity(target)	5.00	R	1.73	0.64	1.85	
Liquid Conductivity(meas.)	2.07	N	1	0.64	1.60	9
Liquid Permittivity(target)	5.00	R	1.73	0.6	1.73	
Liquid Permittivity(meas.)	5.02	N	1	0.6	1.50	9
Combine Standard Uncertainty					10.85	
Coverage Factor for 95 %					$k=2$	
Expanded STD Uncertainty					21.70	

Table 7.1 Uncertainty (800 MHz- 2 600 MHz)

8. ANSI/ IEEE C95.1 - 1992 RF EXPOSURE LIMITS

HUMAN EXPOSURE	UNCONTROLLED ENVIRONMENT General Population (W/kg) or (mW/g)	CONTROLLED ENVIRONMENT Occupational (W/kg) or (mW/g)
SPATIAL PEAK SAR * (Brain)	1.60	8.00
SPATIAL AVERAGE SAR ** (Whole Body)	0.08	0.40
SPATIAL PEAK SAR *** (Hands / Feet / Ankle / Wrist)	4.00	20.00

Table 8.1 Safety Limits for Partial Body Exposure

NOTES:

- * The Spatial Peak value of the SAR averaged over any 1 g of tissue (defined as a tissue volume in the shape of a cube) and over the appropriate averaging time.
- ** The Spatial Average value of the SAR averaged over the whole-body.
- *** The Spatial Peak value of the SAR averaged over any 10 g of tissue (defined as a tissue volume in the shape of a cube) and over the appropriate averaging time.

Uncontrolled Environments are defined as locations where there is the exposure of individuals who have no knowledge or control of their exposure.

Controlled Environments are defined as locations where there is exposure that may be incurred by persons who are aware of the potential for exposure, (i.e.as a result of employment or occupation).

9. SAR SYSTEM VALIDATION

Per FCC KCB 865664 D02v01r01, SAR system validation status should be document to confirm measurement accuracy. The SAR systems (including SAR probes, system components and software versions) used for this device were validated against its performance specifications prior to the SAR measurements. Reference dipoles were used with the required tissue- equivalent media for system validation, according to the procedures outlined in IEEE 1528-2003 and FCC KDB 865664 D01v01r03. Since SAR probe calibrations are frequency dependent, each probe calibration point was validated at a frequency within the valid frequency range of the probe calibration point, using the system that normally operates with the probe for routine SAR measurements and according to the required tissue-equivalent media.

A tabulated summary of the system validation status including the validation date(s), measurement frequencies, SAR probes and tissue dielectric parameters has been included.

SAR System #	Probe	Probe Type	Probe Calibration Point		Dipole	Date	Dielectric Parameters		CW Validation			Modulation Validation		
							Measured Permittivity	Measured Conductivity	Sensitivity	Probe Linearity	Probe Isotropy	MOD. Type	Duty Factor	PAR
7	1630	ET3DV6	Head	835	490	Jan. 7,2015	41.6	0.91	PASS	PASS	PASS	GMSK	PASS	N/A
1	3863	EX3DV4	Body	835	490	Jan. 5,2015	55.3	1.01	PASS	PASS	PASS	GMSK	PASS	N/A
1	3863	EX3DV4	Head	1800	2d006	Aug.04,2014	40.1	1.39	PASS	PASS	PASS	N/A	N/A	N/A
5	3903	EX3DV4	Body	1800	2d006	Apr.11,2014	53.1	1.54	PASS	PASS	PASS	N/A	N/A	N/A
1	3863	EX3DV4	Head	1900	5d061	Aug.05,2014	39.8	1.4	PASS	PASS	PASS	GMSK	PASS	N/A
1	3863	EX3DV4	Body	1900	5d061	Aug.06,2014	52.1	1.52	PASS	PASS	PASS	GMSK	PASS	N/A
5	3903	EX3DV4	Head	1900	5d061	Aug.05,2014	39.8	1.4	PASS	PASS	PASS	NA	N/A	NA
5	3903	EX3DV4	Body	1900	5d061	Aug.06,2014	52.1	1.52	PASS	PASS	PASS	NA	N/A	NA
1	3863	EX3DV4	Head	2450	743	Aug.05,2014	38.2	1.79	PASS	PASS	PASS	OFDM	N/A	PASS
1	3863	EX3DV4	Body	2450	743	Aug.06,2014	53.2	1.95	PASS	PASS	PASS	OFDM	N/A	PASS
1	3863	EX3DV4	Head	2600	1015	Aug.05,2014	38.5	1.98	PASS	PASS	PASS	N/A	N/A	N/A
1	3863	EX3DV4	Body	2600	1015	Aug.06,2014	52.7	2.09	PASS	PASS	PASS	N/A	N/A	N/A

SAR System Validation Summary

Note;

All measurement were performed using probes calibrated for CW signal only. Modulations in the table above represent test configurations for which the measurement system has been validated per FCC KDB Publication 865664 D01v01r03. SAR system were validated for modulated signals with a periodic duty cycle, such as GMSK, or with a high peak to average ratio (>5 dB), such as OFDM according to KDB 865664 D01v01r03.

10. SYSTEM VERIFICATION

10.1 Tissue Verification

Freq.	Date	Probe	Dipole	Liquid	Liquid Temp.	Parameters	Target Value	Measured Value	Deviation	Limit
[MHz]					[°C]				[%]	[%]
835	Jan. 14, 2015	1630	490	Head	22.1	ϵ_r	41.5	41.9	+ 0.96	± 5
						σ	0.90	0.915	+ 1.67	± 5
835	Jan. 15, 2015	3863		Body	23.0	ϵ_r	55.2	56.8	+ 2.90	± 5
						σ	0.97	0.985	+ 1.55	± 5
1 800	Jan. 19, 2015	3863	2d006	Head	22.9	ϵ_r	40.0	40.1	+ 0.25	± 5
						σ	1.40	1.4	+ 0.00	± 5
1 800	Jan. 19, 2015	3903		Body	22.9	ϵ_r	53.3	55.1	+ 3.38	± 5
						σ	1.52	1.51	- 0.66	± 5
1 900	Jan. 16, 2015	3863	5d061	Head	22.9	ϵ_r	40.0	38.9	- 2.75	± 5
						σ	1.40	1.43	+ 2.14	± 5
1 900	Jan. 16, 2015	3863		Body	22.9	ϵ_r	53.3	54	+ 1.31	± 5
						σ	1.52	1.55	+ 1.97	± 5
1 900	Jan. 23, 2015	3903	5d061	Head	21.8	ϵ_r	40.0	38.9	- 2.75	± 5
						σ	1.40	1.43	+ 2.14	± 5
1 900	Jan. 23, 2015	3903		Body	21.8	ϵ_r	53.3	54	+ 1.31	± 5
						σ	1.52	1.55	+ 1.97	± 5
2 450	Jan. 20, 2015	3863	743	Head	21.2	ϵ_r	39.2	37.7	- 3.83	± 5
						σ	1.80	1.83	+ 1.67	± 5
2 450	Jan. 20, 2015	3863		Body	21.2	ϵ_r	52.7	52.9	+ 0.38	± 5
						σ	1.95	1.98	+ 1.54	± 5
2 600	Jan. 22, 2015	3863	1015	Head	21.1	ϵ_r	39.0	38.6	- 1.03	± 5
						σ	1.96	2.03	+ 3.57	± 5
2 600	Jan. 22, 2015	3863		Body	21.1	ϵ_r	52.5	54.3	+ 3.43	± 5
						σ	2.16	2.19	+ 1.39	± 5

The Tissue dielectronic parameters were measured prior to the SAR evaluation using an Agilent 85070C Dielectronic Probe Kit and Agilent Network Analyzer.

10.2 System Verification

Prior to assessment, the system is verified to the $\pm 10\%$ of the specifications at 835 MHz / 1 800 MHz / 1 900 MHz / 2 450 MHz / 2 600 MHz by using the system Verification kit. (Graphic Plots Attached)

System Verification Results

Freq.	Date	Probe (S/N)	Dipole (S/N)	Liquid	Amb. Temp.	Liquid Temp.	1 W Target SAR _{1g} (SPEAG)	Measured SAR _{1g}	1 W Normalized SAR _{1g}	Deviation	Limit [%]
[MHz]					[°C]	[°C]	[mW/g]	[mW/g]	[mW/g]	[%]	[%]
835	Jan. 14, 2015	1630	490	Head	22.3	22.1	9.07	0.935	9.35	+ 3.09	± 10
835	Jan. 15, 2015	3863		Body	23.2	23.0	9.49	0.967	9.67	+ 1.90	± 10
1 800	Jan. 19, 2015	3863	2d006	Head	23.1	22.9	38.1	3.68	36.8	- 3.41	± 10
1 800	Jan. 19, 2015	3903		Body	23.1	22.9	38.1	4	40	+ 4.99	± 10
1 900	Jan. 16, 2015	3863	5d061	Head	23.1	22.9	40.6	3.85	38.5	- 5.17	± 10
1 900	Jan. 16, 2015	3863		Body	23.1	22.9	40.8	4.13	41.3	+ 1.23	± 10
1 900	Jan. 23, 2015	3903	5d061	Head	22.0	21.8	40.6	4.03	40.3	- 0.74	± 10
1 900	Jan. 23, 2015	3903		Body	22.0	21.8	40.8	3.84	38.4	- 5.88	± 10
2 450	Jan. 20, 2015	3863	743	Head	21.4	21.2	53.2	5.2	52	- 2.26	± 10
2 450	Jan. 20, 2015	3863		Body	21.4	21.2	51.3	5.26	52.6	+ 2.53	± 10
2 600	Jan. 22, 2015	3863	1015	Head	21.3	21.1	57.7	5.75	57.5	- 0.35	± 10
2 600	Jan. 22, 2015	3863		Body	21.3	21.1	55.5	5.65	56.5	+ 1.80	± 10

10.3 System Verification Procedure

SAR measurement was prior to assessment, the system is verified to the $\pm 10\%$ of the specifications at each frequency band by using the system Verification kit. (Graphic Plots Attached)

- Cabling the system, using the Verification kit equipment.
- Generate about 100 mW Input Level from the Signal generator to the Dipole Antenna.
- Dipole Antenna was placed below the Flat phantom.
- The measured one-gram SAR at the surface of the phantom above the dipole feed-point should be within 10 % of the target reference value.
- The results are normalized to 1 W input power.

Note;

SAR Verification was performed according to the FCC KDB 865664 D01v01r03.

11. RF CONDUCTED POWER MEASUREMENT

Power measurements were performed using a base station simulator under digital average power. The handset was placed into a simulated call using a base station simulator in a shielded chamber. Such test signals offer a consistent means for testing SAR and are recommended for evaluation SAR. SAR measurements were taken with a fully charged battery. In order to verify that the device was tested and maintained at full power, this was configured with the base station simulator. The SAR measurement software calculates a reference point at the start and end of the test to check for power drifts. If conducted power deviations of more than 5 % occurred, the tests were repeated.

11.1 Output Power Specifications.

This device operates using the following maximum output power specifications. SAR values were scaled to the maximum allowed power to determine compliance per KDB publication 447498 D01v05r02.

GSM

GSM850		GSM1900	
Target Power : 33.7 dBm		Target Power : 29.0 dBm	
GPRS850		PCS1900	
GPRS 1tx : 33.7 dBm / EGPRS 1tx : 27.7 dBm		GPRS 1tx : 29.0 dBm / EGPRS 1tx : 25.7 dBm	
GPRS 2tx : 31.2 dBm / EGPRS 2tx : 27.7 dBm		GPRS 2tx : 26.5 dBm / EGPRS 2tx : 25.7 dBm	
GPRS 3tx : 30.2 dBm / EGPRS 3tx : 26.7 dBm		GPRS 3tx : 25.5 dBm / EGPRS 3tx : 24.7 dBm	
GPRS 4tx : 28.7 dBm / EGPRS 4tx : 25.7 dBm		GPRS 4tx : 24.5 dBm / EGPRS 4tx : 23.7 dBm	
Tune-up Tolerance : -1.5 dB/ +0.5 dB			

WCDMA

WCDMA850			
Target Power : 23.7 dBm			
HSDPA Sub-test1	Target Power : 23.7 dBm	DC-HSDPA Sub-test1	Target Power : 23.7 dBm
HSDPA Sub-test2	Target Power : 23.7 dBm	DC-HSDPA Sub-test2	Target Power : 23.7 dBm
HSDPA Sub-test3	Target Power : 23.2 dBm	DC-HSDPA Sub-test3	Target Power : 23.2 dBm
HSDPA Sub-test4	Target Power : 23.2 dBm	DC-HSDPA Sub-test4	Target Power : 23.2 dBm
HSUPA Sub-test1	Target Power : 23.7 dBm	-	-
HSUPA Sub-test2	Target Power : 21.7 dBm	-	-
HSUPA Sub-test3	Target Power : 22.7 dBm	-	-
HSUPA Sub-test4	Target Power : 21.7 dBm	-	-
HSUPA Sub-test5	Target Power : 23.7 dBm	-	-
WCDMA1900			
Target Power : 23.2 dBm			
HSDPA Sub-test1	Target Power : 23.2 dBm	DC-HSDPA Sub-test1	Target Power : 23.2 dBm
HSDPA Sub-test2	Target Power : 23.2 dBm	DC-HSDPA Sub-test2	Target Power : 23.2 dBm
HSDPA Sub-test3	Target Power : 22.7 dBm	DC-HSDPA Sub-test3	Target Power : 22.7 dBm
HSDPA Sub-test4	Target Power : 22.7 dBm	DC-HSDPA Sub-test4	Target Power : 22.7 dBm
HSUPA Sub-test1	Target Power : 23.2 dBm	-	-
HSUPA Sub-test2	Target Power : 21.2 dBm	-	-
HSUPA Sub-test3	Target Power : 22.2 dBm	-	-
HSUPA Sub-test4	Target Power : 21.2 dBm	-	-
HSUPA Sub-test5	Target Power : 22.2 dBm	-	-
Tune-up Tolerance : -1.5 dB/ +0.5 dB			
MPR Tolerance : -1.5 dB/ +0.5 dB			

* The HSUPA transmitter power will not exceed the R99 maximum transmit power in devices based on Qualcomm's HSPA chipset solutions

LTE

Mode/Band	LTE Band 2	LTE Band 4	LTE Band 7
Target Power	22.5 dBm	22.5 dBm	22.5 dBm
Tune-up Tolerance : -1.5 dB/ +0.5 dB			

Wifi

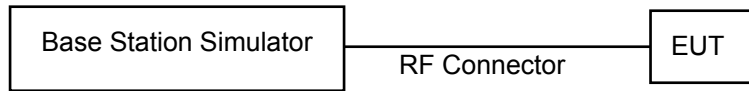
IEEE 802.11 (in dBm)						
2.4 GHz WIFI	Mode / Band	a	b	g	N (20MHz)	N (40MHz)
	Maximum	N/A	11.5	10.2	9.3	N/A
	Nominal	N/A	10.5	9.2	8.3	N/A

BT.

Bluetooth (Average Power)	(in dBm)	DH5	2-DH5	3-DH5	LE
	Maximum	9	6.5	6.5	0
	Nominal	8	5.5	5.5	-1

11.2 GSM

Conducted output power measurements were performed using a base station simulator under digital average power.



SAR Test for WWAN were performed with a base station simulator Agilent E5515C. Communication between the device and the emulator was established by air link. Set base station emulator to allow DUT to radiate maximum output power during all tests. Please refer to the below worst case SAR operation setup.

- GSM voice: Head SAR, Body SAR
- GPRS Multi-slots : Body SAR with GPRS/EDGE Multi-slot Class 33 with CS 1 (GMSK)

Note;

This EUT'S GSM, GPRS and EDGE device class is B, DTM Multislot class :N/A
 Per KDB 941225 D01v03, GMSK GPRS and EDGE mode is the primary mode.
 CS1/MCS7 coding scheme was used in GPRS/EDGE output power measurements and SAR Testing, as a condition where GMSK modulation was ensured. Investigation has shown that CS1 - CS4/ MCS5 – MCS9 settings do not have any impact on the output levels in the GPRS/EDGE modes.

GSM Conducted output powers (Burst-Average)

Band	Channel	Voice	GPRS(GMSK) Data – CS1				EDGE Data			
		GSM (dBm)	GPRS 1 TX Slot (dBm)	GPRS 2 TX Slot (dBm)	GPRS 3 TX Slot (dBm)	GPRS 4 TX Slot (dBm)	EDGE 1 TX Slot (dBm)	EDGE 2 TX Slot (dBm)	EDGE 3 TX Slot (dBm)	EDGE 4 TX Slot (dBm)
GSM 850	128	33.36	33.36	31.08	30.07	28.73	26.44	26.32	25.24	24.37
	190	33.47	33.41	31.20	30.14	28.54	26.52	26.40	25.31	24.48
	251	33.14	33.11	30.92	30.22	28.56	26.42	26.34	25.23	24.38
GSM 1900	512	28.11	28.10	26.30	25.79	24.54	25.07	25.02	24.70	23.69
	661	28.11	28.11	26.28	25.97	24.43	25.03	24.96	24.65	23.63
	810	28.15	28.15	26.32	25.97	24.54	25.11	25.05	24.75	23.72

GSM Conducted output powers (Frame-Average)

Band	Channel	Voice	GPRS(GMSK) Data – CS1				EDGE Data			
		GSM (dBm)	GPRS 1 TX Slot (dBm)	GPRS 2 TX Slot (dBm)	GPRS 3 TX Slot (dBm)	GPRS 4 TX Slot (dBm)	EDGE 1 TX Slot (dBm)	EDGE 2 TX Slot (dBm)	EDGE 3 TX Slot (dBm)	EDGE 4 TX Slot (dBm)
GSM 850	128	24.33	24.33	25.06	25.81	25.72	17.41	20.30	20.98	21.36
	190	24.44	24.38	25.18	25.88	25.53	17.49	20.38	21.05	21.47
	251	24.11	24.08	24.90	25.96	25.55	17.39	20.32	20.97	21.37
GSM 1900	512	19.08	19.07	20.28	21.53	21.53	16.04	19.00	20.44	20.68
	661	19.08	19.08	20.26	21.71	21.42	16.00	18.94	20.39	20.62
	810	19.12	19.12	20.30	21.71	21.53	16.08	19.03	20.49	20.71

Note:

Time slot average factor is as follows:

- 1 Tx slot = 9.03 dB, Frame-Average output power = Burst-Average output power – 9.03 dB
- 2 Tx slot = 6.02 dB, Frame-Average output power = Burst-Average output power – 6.02 dB
- 3 Tx slot = 4.26 dB, Frame-Average output power = Burst-Average output power – 4.26 dB
- 4 Tx slot = 3.01 dB, Frame-Average output power = Burst-Average output power – 3.01 dB

11.3 WCDMA

Body SAR is not required for handsets with HSDPA/HSUPA capabilities when the maximum average output of each RF channel with HSDPA active is less than ¼ dB higher than that measured without HSDPA using 12.2 kbps RMC and the maximum SAR for 12.2 kbps RMC is ≤ 75 % of the SAR limit. Otherwise, SAR is Measured for HSDPA, using an FRC with H-Set 1 in Sub-test 1 and a 12.2 kbps RMC configured in Test Loop Mode 1, using the highest body SAR configuration in 12.2 kbps RMC without HSDPA, on the maximum output channel with the body exposure configuration that results in the highest SAR in 12.2 kbps RMC for that RF channel.

11.3.1 Output Power Verification

Maximum output power is verified on the High, Middle and Low channels according to the general descriptions in section 5.2 of 3 GPP TS 34.121, using the appropriate RMC or AMR with TPC(transmit power control) set to all “1s”.

11.3.2 Head SAR Measurements

SAR for head exposure configurations is measured using the 12.2 kbps RMC with TPC bits configured to all “1s”. SAR in AMR configurations is not required when the maximum average output of each RF channel for 12.2 kbps AMR is less than ¼ dB higher than that measured in 12.2 kbps RMC. Otherwise, SAR is measured on the maximum output channel in 12.2 AMR with a 3.4 kbps SRB (signaling radio bearer) using the exposure configuration that results in the highest SAR for that RF channel in 12.2 RMC.

11.3.3 Body SAR Measurement

SAR for body exposure configurations is measured using the 12.2 kbps RMC with the TPC bits all “1s”.

11.3.4 Handsets with Release 5 HSDPA

Body SAR is not required for handsets with HSDPA capabilities when the maximum average output of each RF channel with HSDPA active is less than ¼ dB higher than that measured without HSDPA using 12.2 kbps RMC and the maximum SAR for 12.2 kbps RMC is ≤ 75 % of the SAR limit. Otherwise, SAR is Measured for HSDPA, using an FRC with H-Set 1 in Sub-test 1 and a 12.2 kbps RMC configured in Test Loop Mode 1, using the highest body SAR configuration in 12.2 kbps RMC without HSDPA, on the maximum output channel with the body exposure configuration that results in the highest SAR in 12.2 kbps RMC for that RF channel.

Sub-Test 1 Setup for Release 5 HSDPA

Sub-test	β_c	β_d	β_d (SF)	β_c/β_d	$\beta_{hs}^{(2)}$	CM (dB) ⁽²⁾
1	2/15	15/15	64	2/15	4/15	0.0
2	12/15 ⁽³⁾	15/15 ⁽³⁾	64	12/15 ⁽³⁾	24/15	1.0
3	15/15	8/15	64	15/8	30/15	1.5
4	15/15	4/15	64	15/4	30/15	1.5

Note 1: $\Delta_{ACK}, \Delta_{NACK}$ and $\Delta_{CQI} = 8 \Leftrightarrow A_{hs} = \beta_{hs}/\beta_c = 30/15 \Leftrightarrow \beta_{hs} = 30/15 * \beta_c$

Note 2: CM = 1 for $\beta_c/\beta_d = 12/15, \beta_{hs}/\beta_c = 24/15$.

Note 3: For subtest 2 the β_c/β_d ratio of 12/15 for the TFC during the measurement period (TF1, TF0) is achieved by setting the signaled gain factors for the reference TFC (TF1, TF1) to $\beta_c = 11/15$ and $\beta_d = 15/15$.

11.3.5 Handsets with Release 6 HSPA (HSDPA/HSUPA)

Body SAR is not required for handsets with HSPA capabilities when the maximum average output of each RF channel with HSUPA/HSDPA active is less than ¼ dB higher than that measured without HSUPA/HSDPA using 12.2 kbps RMC and the maximum SAR for 12.2 kbps RMC is ≤ 75 % of the SAR limit. Body SAR for HSPA is measured with E-DCH Sub-test 5, using H-Set 1 and QPSK for FRC and a 12.2 kbps RMC configured in Test Loop Mode 1 with power control algorithm 2, according to the highest body SAR configuration in 12.1 kbps RMC without HSPA. When VOIP is applicable for head exposure, SAR is not required when the maximum output of each RF channel with HSPA is less than ¼ dB higher than that measured using 12.2 kbps RMC; otherwise, the same HSPA configuration used for body measurement should be used to test for head exposure.

Sub-test	β_c	β_d	β_d (SF)	β_c/β_d	$\beta_{hs}^{(1)}$	β_{ec}	β_{ed}	β_{ed} (SF)	β_{ed} (codes)	CM ⁽²⁾ (dB)	MPR (dB)	AG ⁽⁴⁾ Index	E-TFCI
1	11/15 ⁽³⁾	15/15 ⁽³⁾	64	11/15 ⁽³⁾	22/15	209/225	1039/225	4	1	1.0	0.0	20	75
2	6/15	15/15	64	6/15	12/15	12/15	94/75	4	1	3.0	2.0	12	67
3	15/15	9/15	64	15/9	30/15	30/15	$\beta_{ed1}: 47/15$ $\beta_{ed2}: 47/15$	4	2	2.0	1.0	15	92
4	2/15	15/15	64	2/15	4/15	2/15	56/75	4	1	3.0	2.0	17	71
5	15/15 ⁽⁴⁾	15/15 ⁽⁴⁾	64	15/15 ⁽⁴⁾	30/15	24/15	134/15	4	1	1.0	0.0	21	81

Note 1: $\Delta_{ACK}, \Delta_{NACK}$ and $\Delta_{CQI} = 8 \Leftrightarrow A_{hs} = \beta_{hs}/\beta_c = 30/15 \Leftrightarrow \beta_{hs} = 30/15 * \beta_c$.
 Note 2: CM = 1 for $\beta_c/\beta_d = 12/15, \beta_{hs}/\beta_c = 24/15$. For all other combinations of DPDCH, DPCCH, HS-DPCCH, E-DPDCH and E-DPCCH the MPR is based on the relative CM difference.
 Note 3: For subtest 1 the β_c/β_d ratio of 11/15 for the TFC during the measurement period (TF1, TF0) is achieved by setting the signaled gain factors for the reference TFC (TF1, TF1) to $\beta_c = 10/15$ and $\beta_d = 15/15$.
 Note 4: For subtest 5 the β_c/β_d ratio of 15/15 for the TFC during the measurement period (TF1, TF0) is achieved by setting the signaled gain factors for the reference TFC (TF1, TF1) to $\beta_c = 14/15$ and $\beta_d = 15/15$.
 Note 5: Testing UE using E-DPDCH Physical Layer category 1 Sub-test 3 is not required according to TS 25.306 Table 5.1g.
 Note 6: β_{ed} can not be set directly; it is set by Absolute Grant Value.

Note : Per KDB 941225 D01v03, the 12.2kbps RMC is the primary mode.

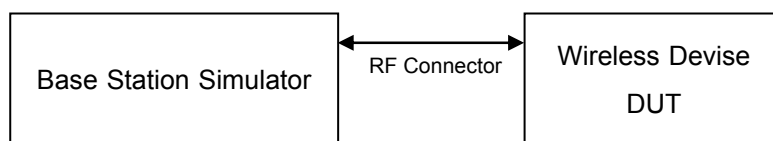
11.3.6 DC-HSDPA

UMTS SAR was tested under RMC 12.2 kbps with HSPA inactive per KDB publication 941225 D01v02. HSPA SAR was not required since the average output power of the HSPA subtests was not more than 0.25 dB higher than the RMC level and SAR was less than 1.2 W/kg.

DC-HSDPA Considerations:

- 3GPP Specification 34.121-1 Release 8 Ver 8.10.0 was used for DC-HSDPA guidance
- H-Set 12(QPSK) was confirmed to be used during DC-HSDPA measurements
- Measured maximum output powers for DC-HSDPA were not greater than 1/4 dB higher than the WCDMA 12.2 kbps RMC maximum output and as a result, SAR is not required for DC-HSDPA
- The DUT supports UE category 24 for HSDPA

It is expected by the manufacturer that MPR for some HSUPA subtests may be up to 1 dB more than specified by 3GPP, but also as low as 0 dB according to the chipset implementation in this model.



WCDMA850

3GPP	Mode	3GPP 34.121	Cellular Band [dBm]		
Release		Subtest			
Version			UL 4132 DL 4357	UL 4183 DL 4408	UL 4233 DL 4458
99	WCDMA	12.2 kbps RMC	23.68	23.68	23.65
99	WCDMA	12.2 kbps AMR	23.67	23.65	23.64
5	HSDPA	Subtest 1	22.77	22.76	22.99
5		Subtest 2	22.79	22.79	22.96
5		Subtest 3	22.26	22.22	22.29
5		Subtest 4	22.25	22.17	22.23
6	HSUPA	Subtest 1	22.24	22.37	22.48
6		Subtest 2	21.59	21.47	21.55
6		Subtest 3	21.54	21.58	21.43
6		Subtest 4	21.48	22.08	21.45
6		Subtest 5	22.21	22.23	22.35
8	DC-HSDPA	Subtest 1	22.69	22.74	22.70
8		Subtest 2	22.75	22.82	22.69
8		Subtest 3	22.31	22.30	22.20
8		Subtest 4	22.31	22.31	22.22

WCDMA Average Conducted output powers

WCDMA1900

3GPP	Mode	3GPP 34.121	PCS Band [dBm]		
Release		Subtest			
Version			UL 9262 DL 9662	UL 9400 DL 9800	UL 9538 DL 9938
99	WCDMA	12.2 kbps RMC	23.60	23.57	23.64
99	WCDMA	12.2 kbps AMR	23.63	23.56	23.64
5	HSDPA	Subtest 1	22.54	22.61	22.59
5		Subtest 2	22.50	22.69	22.56
5		Subtest 3	22.13	22.11	22.16
5		Subtest 4	22.09	22.19	22.05
6	HSUPA	Subtest 1	22.51	22.40	22.57
6		Subtest 2	21.13	21.56	21.20
6		Subtest 3	21.36	21.65	21.64
6		Subtest 4	21.54	21.58	21.35
6		Subtest 5	22.77	22.12	22.05
8	DC-HSDPA	Subtest 1	23.60	22.69	22.82
8		Subtest 2	22.61	22.74	22.86
8		Subtest 3	22.07	22.22	22.35
8		Subtest 4	22.06	22.21	22.35

WCDMA Average Conducted output powers

11.4 LTE

SAR testing was performed according to the FCC KDB 941225 D05v02r03 publication.

This DUT is developed base on MPR. The MPR is mandatory.

The device will not operate with any other MPR setting than that stated in the table as indicated.

SAR Testing was performed using a CMW500. UE transmits with Maximum output power during SAR testing.

A-MPR has been disabled for all SAR tests by setting NS=01 on the R&S CMW500.

- LTE Band 2

Bandwidth	Modulation	RB Size	RB Offset	Max.Average Power (dBm)		
				18607	18900	19193
1.4 MHz	QPSK	1	0	22.27	22.78	22.64
		1	3	22.26	22.38	22.40
		1	5	22.33	22.54	22.37
		3	0	22.47	22.46	22.32
		3	1	22.59	22.49	22.28
		3	3	22.45	22.58	22.33
		6	0	21.55	21.44	21.40
	16QAM	1	0	21.98	21.80	21.49
		1	3	21.75	21.85	21.58
		1	5	21.94	21.94	21.42
		3	0	21.07	21.29	21.88
		3	1	21.71	21.68	21.11
		3	3	21.35	20.68	21.07
		6	0	20.15	20.40	20.58

Bandwidth	Modulation	RB Size	RB Offset	Max.Average Power (dBm)		
				18615	18900	19185
3 MHz	QPSK	1	0	22.51	22.61	22.32
		1	7	22.75	22.48	22.82
		1	14	22.62	22.43	22.47
		8	0	21.71	21.41	21.30
		8	3	21.54	21.46	21.47
		8	7	21.50	21.50	21.41
		15	0	21.57	21.44	21.54
	16QAM	1	0	21.97	21.60	21.68
		1	7	21.98	21.94	21.53
		1	14	21.26	21.84	21.10
		8	0	20.85	20.54	20.37
		8	3	20.36	20.46	20.35
		8	7	20.34	20.12	20.35
		15	0	20.48	20.34	20.51

Bandwidth	Modulation	RB Size	RB Offset	Max.Average Power (dBm)		
				18625	18900	19175
5 MHz	QPSK	1	0	22.68	22.65	22.17
		1	12	22.89	22.85	22.66
		1	24	22.80	22.42	22.33
		12	0	21.47	21.46	21.35
		12	6	21.49	21.45	21.28
		12	11	21.54	21.44	21.29
		25	0	21.57	21.41	21.36
	16QAM	1	0	21.21	21.59	21.69
		1	12	21.71	21.86	21.95
		1	24	21.69	21.63	21.49
		12	0	20.32	20.59	20.20
		12	6	20.67	20.59	20.25
		12	11	20.68	20.49	20.27
		25	0	20.62	20.47	20.53

Bandwidth	Modulation	RB Size	RB Offset	Max.Average Power (dBm)		
				18650	18900	19150
10 MHz	QPSK	1	0	22.74	22.70	22.83
		1	24	22.27	22.35	22.97
		1	49	22.46	22.23	22.80
		25	0	21.34	21.44	21.32
		25	12	21.39	21.27	21.37
		25	24	21.38	21.41	21.41
		50	0	21.32	21.44	21.34
	16QAM	1	0	21.98	21.88	21.94
		1	24	21.46	20.54	21.94
		1	49	21.93	21.38	21.99
		25	0	20.63	20.70	20.24
		25	12	20.33	20.55	20.37
		25	24	20.41	20.55	20.33
		50	0	20.36	20.35	20.24

Bandwidth	Modulation	RB Size	RB Offset	Max.Average Power (dBm)		
				18675	18900	19125
15 MHz	QPSK	1	0	22.48	22.54	22.33
		1	36	22.54	22.39	22.10
		1	74	22.47	22.45	22.14
		36	0	21.51	21.45	21.51
		36	18	21.44	21.38	21.45
		36	38	21.48	21.38	21.46
		75	0	21.44	21.50	21.47
	16QAM	1	0	21.57	21.96	21.95
		1	36	21.46	21.93	21.63
		1	74	21.58	21.98	21.66
		36	0	20.50	20.43	20.24
		36	18	20.43	20.36	20.25
		36	38	20.37	20.38	20.28
		75	0	20.44	20.49	20.30

Bandwidth	Modulation	RB Size	RB Offset	Max.Average Power (dBm)		
				18700	18900	19100
20 MHz	QPSK	1	0	22.76	22.79	22.63
		1	49	22.63	22.51	22.49
		1	99	22.54	22.43	22.53
		50	0	21.60	21.62	21.55
		50	25	21.51	21.53	21.41
		50	49	21.49	21.43	21.41
		100	0	21.57	21.55	21.55
	16QAM	1	0	21.54	21.28	21.10
		1	49	21.39	20.99	20.78
		1	99	21.42	21.00	20.86
		50	0	20.44	20.62	20.54
		50	25	20.42	20.67	20.43
		50	49	20.33	20.50	20.44
		100	0	20.44	20.49	20.41

- LTE Band 4

Bandwidth	Modulation	RB Size	RB Offset	Max.Average Power (dBm)		
				19957	20175	20393
1.4 MHz	QPSK	1	0	21.22	21.61	21.48
		1	3	21.32	21.77	21.86
		1	5	21.33	21.55	21.38
		3	0	21.31	21.23	21.22
		3	1	21.53	21.38	21.37
		3	3	21.35	21.23	21.27
		6	0	20.41	20.21	20.18
	16QAM	1	0	20.65	20.86	20.30
		1	3	20.60	21.01	20.41
		1	5	20.88	20.92	20.81
		3	0	20.04	20.14	20.10
		3	1	20.08	20.17	20.03
		3	3	20.38	20.04	20.07
		6	0	19.65	19.03	19.12

Bandwidth	Modulation	RB Size	RB Offset	Max.Average Power (dBm)		
				19965	20175	20385
3 MHz	QPSK	1	0	21.36	21.18	21.57
		1	7	21.46	21.50	21.31
		1	14	21.02	21.15	21.57
		8	0	20.21	20.23	20.21
		8	3	20.21	20.24	20.13
		8	7	20.13	20.07	20.14
		15	0	20.06	20.17	20.21
	16QAM	1	0	20.30	20.58	20.12
		1	7	20.34	20.13	21.24
		1	14	20.83	20.67	20.82
		8	0	19.28	19.02	19.04
		8	3	19.53	19.04	19.18
		8	7	19.19	19.20	19.14
		15	0	19.18	19.18	19.24

Bandwidth	Modulation	RB Size	RB Offset	Max.Average Power (dBm)		
				19975	20175	20375
5 MHz	QPSK	1	0	21.24	21.33	21.17
		1	12	21.53	21.21	21.57
		1	24	21.45	21.13	21.37
		12	0	20.24	20.18	20.23
		12	6	20.25	20.29	20.27
		12	11	20.23	20.08	20.23
		25	0	20.15	20.16	20.22
	16QAM	1	0	20.82	20.65	20.69
		1	12	20.61	20.18	20.84
		1	24	20.83	20.23	20.85
		12	0	19.47	19.27	19.27
		12	6	19.24	19.16	19.22
		12	11	19.03	19.57	19.29
		25	0	19.27	19.23	19.27

Bandwidth	Modulation	RB Size	RB Offset	Max.Average Power (dBm)		
				20000	20175	20350
10 MHz	QPSK	1	0	21.35	21.82	21.32
		1	24	21.62	21.75	21.28
		1	49	21.64	21.78	21.30
		25	0	20.27	20.26	20.18
		25	12	20.25	20.31	20.22
		25	24	20.31	20.25	20.26
		50	0	20.28	20.22	20.26
	16QAM	1	0	21.19	21.41	20.50
		1	24	21.16	20.43	20.05
		1	49	21.02	20.42	20.33
		25	0	20.35	20.12	20.40
		25	12	20.22	20.29	20.31
		25	24	20.18	20.10	20.39
		50	0	19.29	19.21	19.14

Bandwidth	Modulation	RB Size	RB Offset	Max.Average Power (dBm)		
				20025	20175	20325
15 MHz	QPSK	1	0	21.51	21.44	21.07
		1	36	21.11	21.40	21.09
		1	74	21.35	21.41	21.03
		36	0	20.28	20.28	20.26
		36	18	20.29	20.23	20.21
		36	38	20.34	20.26	20.22
		75	0	20.29	20.23	20.23
	16QAM	1	0	20.20	20.49	21.99
		1	36	20.03	20.35	21.81
		1	74	20.53	20.46	21.64
		36	0	19.16	19.42	19.30
		36	18	19.20	19.40	19.29
		36	38	19.13	19.32	19.19
		75	0	19.41	19.36	19.32

Bandwidth	Modulation	RB Size	RB Offset	Max.Average Power (dBm)
				20175
20 MHz	QPSK	1	0	21.61
		1	49	21.27
		1	99	21.27
		50	0	20.40
		50	25	20.40
		50	49	20.29
		100	0	20.29
	16QAM	1	0	20.58
		1	49	20.53
		1	99	20.49
		50	0	19.30
		50	25	19.32
		50	49	19.31
		100	0	19.34

- LTE Band 7

Bandwidth	Modulation	RB Size	RB Offset	Max.Average Power (dBm)		
				20775	21100	21425
5 MHz	QPSK	1	0	22.43	22.18	22.24
		1	12	22.47	22.37	22.26
		1	24	22.18	22.22	22.14
		12	0	21.24	21.22	21.32
		12	6	21.18	21.27	21.36
		12	11	21.15	21.30	21.33
		25	0	21.19	21.34	21.27
	16QAM	1	0	20.83	21.36	21.71
		1	12	20.81	21.28	21.92
		1	24	20.45	21.23	21.65
		12	0	20.48	20.50	20.31
		12	6	20.17	20.14	20.34
		12	11	20.21	20.48	20.29
		25	0	20.24	20.28	20.34

Bandwidth	Modulation	RB Size	RB Offset	Max.Average Power (dBm)		
				20800	21100	21400
10 MHz	QPSK	1	0	22.60	22.23	22.30
		1	24	22.29	22.66	22.20
		1	49	22.17	22.10	22.23
		25	0	21.21	21.29	21.41
		25	12	21.02	21.36	21.43
		25	24	21.09	21.19	21.45
		50	0	21.19	21.33	21.41
	16QAM	1	0	21.00	21.98	21.63
		1	24	21.03	21.98	21.58
		1	49	20.87	21.99	21.32
		25	0	20.19	20.35	20.37
		25	12	20.04	20.34	20.59
		25	24	20.20	20.29	20.47
		50	0	20.25	20.54	20.32

Bandwidth	Modulation	RB Size	RB Offset	Max.Average Power (dBm)		
				20825	21100	21375
15 MHz	QPSK	1	0	22.84	22.51	22.24
		1	36	22.44	22.27	21.98
		1	74	22.46	22.23	22.11
		36	0	21.23	21.28	21.35
		36	18	21.19	21.37	21.34
		36	38	21.11	21.29	21.43
		75	0	21.20	21.18	21.38
	16QAM	1	0	21.38	21.69	21.88
		1	36	20.99	21.43	21.94
		1	74	21.01	21.43	21.85
		36	0	20.17	20.31	20.20
		36	18	20.21	20.42	20.24
		36	38	20.15	20.44	20.21
		75	0	20.24	20.40	20.27

Bandwidth	Modulation	RB Size	RB Offset	Max.Average Power (dBm)		
				20850	21100	21350
20 MHz	QPSK	1	0	22.73	22.40	22.40
		1	49	22.67	22.19	22.22
		1	99	22.27	22.21	22.24
		50	0	21.30	21.51	21.40
		50	25	21.21	21.36	21.50
		50	49	21.21	21.25	21.44
		100	0	21.24	21.55	21.50
	16QAM	1	0	21.32	21.97	21.71
		1	49	20.94	21.58	21.61
		1	99	20.99	21.36	21.54
		50	0	20.46	20.37	20.33
		50	25	20.34	20.34	20.28
		50	49	20.36	20.17	20.28
		100	0	20.15	20.35	20.39

11.5 WiFi

11.5.1 SAR Testing for 802.11b/g/n modes

General Device Setup

Normal Network operating configurations are not suitable for measuring the SAR of 802.11 a/b/g transmitters. Unpredictable fluctuations in network traffic and antenna diversity conditions can introduce undesirable variations in SAR results. The SAR for these devices should be measured using chipset based test mode software to ensure the results are consistent and reliable.

Chipset based test mode software is hardware dependent and generally varies among manufacturers. The device operating parameters established in test mode for SAR measurements must be identical to those programmed in production units, including output power levels, amplifier gain settings and other RF performance tuning parameters. The test frequencies should correspond to actual channel frequencies defined for domestic use. SAR for devices with switched diversity should be measured with only one antenna transmitting at a time during each SAR measurement, according to a fixed modulation and data rate. The same data pattern should be used for all measurements.

Frequency Channel Configurations

802.11 a/b/g and 4.9 GHz operating modes are tested independently according to the service requirements in each frequency band. 802.11 b/g modes are tested on channels 1, 6 and 11. 802.11a is tested for UNII operations on channels 36 and 48 in the 5.15-5.25 GHz band; channels 52 and 64 in the 5.25-5.35 GHz band; Channels 104, 116, 124 and 136 in the 5.470-5.725 GHz band; and channels 149 and 161 in the 5.8 GHz band. When 5.8 GHz § 15.247 is also available, channels 149, 157 and 165 should be tested instead of the UNII channels. 4.9 GHz is tested on channels 1, 10 and 5 or 6, whichever has the higher output power, for 5 MHz channels; channels 11, 15 and 19 for 10 MHz channels; and channels 21 and 25 for 20 MHz channels. These are referred to as the “default test channels”. 802.11g mode was evaluated only if the output power was 0.25 dB higher than the 802.11b mode.

Mode	GHz	Channel	Turbo Channel	“Default Test Channels”		UNII		
				§15.247				
				802.11b	802.11g			
802.11b/g	2.412	1#		√	▽			
	2.437	6	6	√	▽			
	2.462	11#		√	▽			
802.11a	5.18	36				√		
	5.20	40	42 (5.21 GHz)				*	
	5.22	44					*	
	5.24	48	50 (5.25 GHz)			√		
	5.26	52				√		
	5.28	56	58 (5.29 GHz)				*	
	5.30	60					*	
	5.32	64				√		
	5.500	100	Unknown					*
	5.520	104					√	
	5.540	108						*
	5.560	112						*
	5.580	116					√	
	5.600	120						*
	5.620	124					√	
	5.640	128						*
	5.660	132						*
	5.680	136					√	
	5.700	140					*	
	UNII or §15.247	5.745	149		√		√	
5.765		153	152 (5.76 GHz)		*		*	
5.785		157		√			*	
5.805		161	160 (5.80 GHz)		*	√		
§15.247	5.825	165		√				

802.11 Test Channels per FCC Requirements

IEEE 802.11b Average RF Power

Mode	Freq. [MHz]	Channel	802.11b (2.4 GHz) Conducted Power [dBm]			
			Data Rate (Mbps)			
			1	2	5.5	11
802.11b	2412	1	11.07	10.98	11.16	11.18
	2437	6	10.21	10.24	10.23	10.23
	2462	11	9.24	9.48	9.27	9.29

IEEE 802.11g Average RF Power

Mode	Freq. [MHz]	Channel	802.11g (2.4 GHz) Conducted Power [dBm]							
			Data Rate (Mbps)							
			6	9	12	18	24	36	48	54
802.11g	2412	1	9.58	9.65	9.64	9.67	9.65	9.64	9.73	9.66
	2437	6	9.12	8.96	8.98	9.03	9.00	9.00	9.04	9.00
	2462	11	7.84	8.02	8.04	8.05	8.08	8.10	8.07	8.06

IEEE 802.11n Average RF Power

Mode	Freq. [MHz]	Channel	802.11n (2.4 GHz) Conducted Power [dBm]							
			Data Rate (Mbps)							
			6.5	13	19.5	26	39	52	58.5	65
802.11n (20MHz)	2412	1	8.65	8.58	8.70	8.69	8.68	8.69	8.73	8.79
	2437	6	8.02	8.24	8.06	8.02	8.03	8.08	8.08	8.06
	2462	11	7.09	7.17	7.12	7.09	7.13	7.23	7.11	7.16

11.6 SAR Test Exclusions Applied

11.6.1 WCDMA

Per FCC KDB 941225 D01V03, 12.2 kbps RMC is the primary mode and HSPA (HSUPA/HSDPA with RMC) is the secondary mode.

Per KDB 941225 D01v03, The SAR test exclusion is applied to the secondary mode by the following equation.

$$\text{Adjusted SAR} = \text{Highest Reported SAR} * \frac{\text{Secondary Max tune - up (mW)}}{\text{Primary Max tune - up (mW)}} \leq 1.2 \text{ W/kg.}$$

Based on the highest Reported SAR, the secondary mode is not required.

$$[1.175 * (234/234)] = 1.175 \text{ W/kg} \leq 1.2 \text{ W/kg}$$

And the the maximum output power and tune-up tolerance in secondary mode is 0.25 dB higher than the primary mode.

11.6.2 BT

Per FCC KDB 447498 D01v05r02, The SAR exclusion threshold for distance < 50 mm is defined by the following equation:

$$\frac{\text{Max Power of Channel(mW)}}{\text{Test Separation Distance (mm)}} * \sqrt{\text{Frequency(GHz)}} \leq 3.0$$

Mode	Frequency	Maximum Allowed Power	Separation Distance	≤ 3.0
	[MHz]	[mW]	[mm]	
Bluetooth	2 480	8	10	1.26

Based on the maximum conducted power of Bluetooth and antenna to use separation distance, Bluetooth SAR was not required $[(8/10)*\sqrt{2.480}] = 1.26 < 3.0$.

This device contains transmitters that may operate simultaneously. Therefore simultaneous transmission analysis is required. Per FCC KDB 447498 D01v05r02 IV.C.1iii, simultaneous transmission SAR test exclusion may be applied when the sum of the 1-g SAR for all the simultaneous transmitting antennas in a specific a physical test configuration is ≤ 1.6W/kg. When standalone SAR is not required to be measured per FCC KDB 447498 D01v05r02 4.3.22, the following equation must be used to estimate the standalone 1-g SAR for simultaneous transmission assessment involving that transmitter.

$$\text{Estimated SAR} = \frac{\sqrt{f(\text{GHZ})}}{7.5} * \frac{(\text{Max Power of channel mW})}{\text{Min Separation Distance}}$$

Mode	Frequency	Maximum Allowed Power	Separation Distance (Body)	Estimated SAR (Body)
	[MHz]	[mW]	[mm]	[W/kg]
Bluetooth	2 480	8	10	0.17

Note :

- 1) Held-to ear configurations are not applicable to Bluetooth operations and therefore were not considered for simultaneous transmission. The Estimated SAR results were determined according to FCC KDB447498 D01v05r02.
- 2) The frequency of Bluetooth using for estimated SAR was selected highest channel of Bluetooth for highest estimated SAR.

12. SAR Test configuration

12.1 Mobile Hotspot sides for SAR Testing Configurations

Mode	Rear	Front	Left	Right	Bottom	Top
GSM/GPRS 850	Yes	Yes	No	Yes	Yes	No
GSM/GPRS 1900	Yes	Yes	Yes	No	Yes	No
WCDMA 850	Yes	Yes	No	Yes	Yes	No
WCDMA 1900	Yes	Yes	Yes	No	Yes	No
LTE Band 2	Yes	Yes	Yes	No	Yes	No
LTE Band 4	Yes	Yes	Yes	No	Yes	No
LTE Band 7	Yes	Yes	No	Yes	Yes	No
2.4 GHz WLAN	Yes	Yes	No	Yes	No	Yes

* **Note;** All test configurations are based on front view.

13. SAR TEST DATA SUMMARY

13.1-1 Measurement Results (GSM850 Head SAR)

Frequency		Mode	Power (dBm)		Power Drift (dB)	Battery	Phantom Position	Measured SAR (mW/g)	Scaling Factor	Scaled SAR (mW/g)	Plot No.
MHz	Ch.		Tune-Up Limit	Conducted Power							
836.6	190	GSM 850	34.2	33.47	0.01	Standard	Left Ear	0.442	1.183	0.523	-
836.6	190		34.2	33.47	-0.052	Standard	Left Tilt	0.245	1.183	0.290	-
836.6	190		34.2	33.47	0.165	Standard	Right Ear	0.449	1.183	0.531	-
836.6	190		34.2	33.47	-0.012	Standard	Right Tilt	0.289	1.183	0.342	-
824.2	128	GPRS 4Tx	29.2	28.73	0.180	Standard	Left Ear	0.621	1.114	0.692	-
836.6	190		29.2	28.54	-0.168	Standard	Left Ear	0.695	1.164	0.809	-
848.8	251		29.2	28.56	0.113	Standard	Left Ear	0.626	1.159	0.725	-
836.6	190		29.2	28.54	-0.152	Standard	Left Tilt	0.408	1.164	0.475	-
824.2	128		29.2	28.73	0.104	Standard	Right Ear	0.711	1.114	0.792	-
836.6	190		29.2	28.54	0.174	Standard	Right Ear	0.821	1.164	0.956	1
848.8	251		29.2	28.56	-0.043	Standard	Right Ear	0.752	1.159	0.871	-
836.6	190		29.2	28.54	0.043	Standard	Right Tilt	0.487	1.164	0.567	-
ANSI/ IEEE C95.1 - 1992- Safety Limit Spatial Peak Uncontrolled Exposure/ General Population							Head 1.6 W/kg (mW/g) Averaged over 1 gram				

13.1-2 Measurement Results (GSM1900 Head SAR)

Frequency		Mode	Power (dBm)		Power Drift (dB)	Battery	Phantom Position	Measured SAR (mW/g)	Scaling Factor	Scaled SAR (mW/g)	Plot No.
MHz	Ch.		Tune-Up Limit	Conducted Power							
1 880.0	661	GSM 1900	29.5	28.11	0.183	Standard	Left Ear	0.358	1.377	0.493	-
1 880.0	661		29.5	28.11	-0.075	Standard	Left Tilt	0.262	1.377	0.361	-
1 880.0	661		29.5	28.11	0.036	Standard	Right Ear	0.305	1.377	0.420	-
1 880.0	661		29.5	28.11	0.174	Standard	Right Tilt	0.112	1.377	0.154	-
1 880.0	661	GPRS 4Tx	25.0	24.43	-0.138	Standard	Left Ear	0.611	1.140	0.697	2
1 880.0	661		25.0	24.43	0.052	Standard	Left Tilt	0.258	1.140	0.294	-
1 880.0	661		25.0	24.43	0.023	Standard	Right Ear	0.535	1.140	0.610	-
1 880.0	661		25.0	24.43	0.141	Standard	Right Tilt	0.189	1.140	0.216	-
ANSI/ IEEE C95.1 - 1992- Safety Limit Spatial Peak Uncontrolled Exposure/ General Population							Head 1.6 W/kg (mW/g) Averaged over 1 gram				

13.1-3 Measurement Results (WCDMA850 Head SAR)

Frequency		Mode	Power (dBm)		Power Drift (dB)	Battery	Phantom Position	Measured SAR(mW/g)	Scaling Factor	Scaled SAR (mW/g)	Plot No.
MHz	Ch.		Tune-Up Limit	Conducted Power							
836.6	4183	WCDMA 850	24.2	23.68	0.182	Standard	Left Ear	0.344	1.127	0.388	-
836.6	4183		24.2	23.68	0.095	Standard	Left Tilt	0.201	1.127	0.227	-
836.6	4183		24.2	23.68	0.122	Standard	Right Ear	0.430	1.127	0.485	3
836.6	4183		24.2	23.68	0.003	Standard	Right Tilt	0.268	1.127	0.302	-
ANSI/ IEEE C95.1 - 1992- Safety Limit Spatial Peak Uncontrolled Exposure/ General Population							Head 1.6 W/kg (mW/g) Averaged over 1 gram				

13.1-4 Measurement Results (WCDMA1900 Head SAR)

Frequency		Mode	Power (dBm)		Power Drift (dB)	Battery	Phantom Position	Measured SAR(mW/g)	Scaling Factor	Scaled SAR (mW/g)	Plot No.
MHz	Ch.		Tune-Up Limit	Conducted Power							
1 852.4	9262	WCDMA 1900	23.7	23.60	-0.151	Standard	Left Ear	0.984	1.023	1.007	-
1 880	9400		23.7	23.57	-0.005	Standard	Left Ear	1.04	1.030	1.072	-
1 907.6	9538		23.7	23.64	-0.190	Standard	Left Ear	1.1	1.014	1.115	4
1 880	9400		23.7	23.57	-0.129	Standard	Left Tilt	0.436	1.030	0.449	-
1 880	9400		23.7	23.57	-0.049	Standard	Right Ear	0.758	1.030	0.781	-
1 880	9400		23.7	23.57	0.194	Standard	Right Tilt	0.340	1.030	0.350	-
ANSI/ IEEE C95.1 - 1992- Safety Limit Spatial Peak Uncontrolled Exposure/ General Population							Head 1.6 W/kg (mW/g) Averaged over 1 gram				

13.1-5 Measurement Results (LTE Band 2 20MHz Head SAR)

Frequency		Mode	Power (dBm)		Power Drift (dB)	Battery	Phantom Position	RB Size	RB Offset	Measured SAR (mW/g)	Scaling Factor	Scaled SAR (mW/g)	Plot No
MHz	Ch.		Tune-Up Limit	Conducted Power									
1 860	18700	QPSK	23.0	22.76	-0.088	Standard	Left Ear	1	0	0.814	1.057	0.860	-
1 880	18900		23.0	22.79	0.172	Standard	Left Ear	1	0	0.860	1.050	0.903	5
1 900	19100		23.0	22.63	-0.193	Standard	Left Ear	1	0	0.751	1.089	0.818	-
1 880	18900		22.0	21.62	0.139	Standard	Left Ear	50	0	0.646	1.091	0.705	-
1 860	18700		22.0	21.57	-0.170	Standard	Left Ear	100	0	0.592	1.104	0.654	-
1 880	18900		23.0	22.79	-0.044	Standard	Left Tilt	1	0	0.409	1.050	0.429	-
1 880	18900		22.0	21.62	-0.016	Standard	Left Tilt	50	0	0.297	1.091	0.324	-
1 880	18900		23.0	22.79	-0.122	Standard	Right Ear	1	0	0.549	1.050	0.576	-
1 880	18900		22.0	21.62	0.124	Standard	Right Ear	50	0	0.431	1.091	0.470	-
1 880	18900		23.0	22.79	-0.185	Standard	Right Tilt	1	0	0.350	1.050	0.367	-
1 880	18900		22.0	21.62	0.186	Standard	Right Tilt	50	0	0.254	1.091	0.277	-
ANSI/ IEEE C95.1 1992 – Safety Limit Spatial Peak Uncontrolled Exposure/ General Population								Head 1.6 W/kg (mW/g) Averaged over 1 gram					

13.1-6 Measurement Results (LTE Band 4 20MHz Head SAR)

Frequency		Mode	Power (dBm)		Power Drift (dB)	Battery	Phantom Position	RB Size	RB Offset	Measured SAR (mW/g)	Scaling Factor	Scaled SAR (mW/g)	Plot No
MHz	Ch.		Tune-Up Limit	Conducted Power									
1 732.5	20175	QPSK	23.0	21.61	0.162	Standard	Left Ear	1	0	0.553	1.377	0.762	-
1 732.5	20175		22.0	20.40	0.06	Standard	Left Ear	50	0	0.403	1.445	0.583	-
1 732.5	20175		23.0	21.61	-0.151	Standard	Left Tilt	1	0	0.221	1.377	0.304	-
1 732.5	20175		22.0	20.40	-0.063	Standard	Left Tilt	50	0	0.179	1.445	0.259	-
1 732.5	20175		23.0	21.61	0.184	Standard	Right Ear	1	0	0.681	1.377	0.938	6
1 732.5	20175		22.0	20.40	-0.179	Standard	Right Ear	50	0	0.501	1.445	0.724	-
1 732.5	20175		22.0	20.29	-0.125	Standard	Right Ear	100	0	0.461	1.483	0.683	-
1 732.5	20175		23.0	21.61	0.172	Standard	Right Tilt	1	0	0.139	1.377	0.191	-
1 732.5	20175		22.0	20.40	-0.032	Standard	Right Tilt	50	0	0.089	1.445	0.129	-
ANSI/ IEEE C95.1 1992 – Safety Limit Spatial Peak Uncontrolled Exposure/ General Population								Head 1.6 W/kg (mW/g) Averaged over 1 gram					

13.1-7 Measurement Results (LTE Band 7 20MHz Head SAR)

Frequency		Mode	Power (dBm)		Power Drift (dB)	Battery	Phantom Position	RB Size	RB Offset	Measured SAR (mW/g)	Scaling Factor	Scaled SAR (mW/g)	Plot No
MHz	Ch.		Tune-Up Limit	Conducted Power									
2 510	20850	QPSK	23.0	22.73	-0.165	Standard	Left Ear	1	0	0.448	1.064	0.477	-
2 535	21100		22.0	21.51	-0.113	Standard	Left Ear	50	0	0.288	1.119	0.322	-
2 510	20850		23.0	22.73	0.164	Standard	Left Tilt	1	0	0.307	1.064	0.327	-
2 535	21100		22.0	21.51	0.141	Standard	Left Tilt	50	0	0.202	1.119	0.226	-
2 510	20850		23.0	22.73	0.146	Standard	Right Ear	1	0	1.05	1.064	1.117	7
2 535	21100		23.0	22.40	-0.128	Standard	Right Ear	1	0	0.845	1.148	0.970	-
2 560	21350		23.0	22.40	-0.117	Standard	Right Ear	1	0	0.719	1.148	0.826	-
2 535	21100		22.0	21.51	0.154	Standard	Right Ear	50	0	0.710	1.119	0.795	-
2 535	21100		22.0	21.55	0.130	Standard	Right Ear	100	0	0.657	1.109	0.729	-
2 510	20850		23.0	22.73	0.154	Standard	Right Tilt	1	0	0.299	1.064	0.318	-
2 535	21100		22.0	21.51	0.094	Standard	Right Tilt	50	0	0.166	1.119	0.186	-
ANSI/ IEEE C95.1 1992 – Safety Limit Spatial Peak Uncontrolled Exposure/ General Population								Head 1.6 W/kg (mW/g) Averaged over 1 gram					

13.1-8 Measurement Results (DTS Head SAR)

Frequency		Mode	Power (dBm)		Power Drift (dB)	Battery	Phantom Position	Data Rate	Measured SAR (mW/g)	Scaling Factor	Scaled SAR (mW/g)	Plot No.
MHz	Ch.		Tune-Up Limit	Conducted Power								
2 412	1	802.11b	11.5	11.07	-0.145	Standard	Left Ear	1Mbps	0.187	1.104	0.206	8
			11.5	11.07	0.127	Standard	Left Tilt	1Mbps	0.136	1.104	0.150	-
			11.5	11.07	-0.121	Standard	Right Ear	1Mbps	0.098	1.104	0.108	-
			11.5	11.07	0.103	Standard	Right Tilt	1Mbps	0.081	1.104	0.089	-
ANSI/ IEEE C95.1 - 1992– Safety Limit Spatial Peak Uncontrolled Exposure/ General Population								Head 1.6 W/kg (mW/g) Averaged over 1 gram				

13.2-1 Measurement Results (GSM850 Hotspot SAR)

Frequency		Mode	Power (dBm)		Power Drift (dB)	Configuration	Separation Distance	Measured SAR(mW/g)	Scaling Factor	Scaled SAR(mW/g)	Plot No.
MHz	Ch.		Tune-Up Limit	Conducted Power							
824.2	128	GPRS 4Tx	29.2	28.73	0.036	Rear	1.0 cm	1.06	1.114	1.181	9
836.6	190		29.2	28.54	-0.051	Rear	1.0 cm	0.979	1.164	1.140	-
848.8	251		29.2	28.56	0.084	Rear	1.0 cm	0.827	1.159	0.958	-
836.6	190		29.2	28.54	-0.010	Front	1.0 cm	0.661	1.164	0.769	-
836.6	190		29.2	28.54	-0.193	Right	1.0 cm	0.673	1.164	0.783	-
836.6	190		29.2	28.54	0.050	Bottom	1.0 cm	0.304	1.164	0.354	-
ANSI/ IEEE C95.1 - 1992- Safety Limit Spatial Peak Uncontrolled Exposure/ General Population							Body 1.6 W/kg (mW/g) Averaged over 1 gram				

13. 2-2 Measurement Results (GSM1900 Hotspot SAR)

Frequency		Mode	Power (dBm)		Power Drift (dB)	Configuration	Separation Distance	Measured SAR (mW/g)	Scaling Factor	Scaled SAR (mW/g)	Plot No.
MHz	Ch.		Tune-Up Limit	Conducted Power							
1 880.0	661	GPRS 4Tx	25.0	24.43	-0.176	Rear	1.0 cm	0.478	1.140	0.545	10
1 880.0	661		25.0	24.43	0.166	Front	1.0 cm	0.675	1.140	0.770	11
1 880.0	661		25.0	24.43	0.144	Left	1.0 cm	0.272	1.140	0.310	-
1 880.0	661		25.0	24.43	0.089	Bottom	1.0 cm	0.393	1.140	0.448	-
ANSI/ IEEE C95.1 - 1992- Safety Limit Spatial Peak Uncontrolled Exposure/ General Population							Body 1.6 W/kg (mW/g) Averaged over 1 gram				

13.2-3 Measurement Results (WCDMA850 Hotspot SAR)

Frequency		Mode	Power (dBm)		Power Drift (dB)	Configuration	Separation Distance	Measured SAR (mW/g)	Scaling Factor	Scaled SAR (mW/g)	Plot No.
MHz	Ch.		Tune-Up Limit	Conducted Power							
836.6	4183	WCDMA 850	24.2	23.68	0.113	Rear	1.0 cm	0.608	1.127	0.685	12
836.6	4183		24.2	23.68	0.143	Front	1.0 cm	0.498	1.127	0.561	-
836.6	4183		24.2	23.68	-0.005	Right	1.0 cm	0.508	1.127	0.573	-
836.6	4183		24.2	23.68	0.038	Bottom	1.0 cm	0.201	1.127	0.227	-
ANSI/ IEEE C95.1 - 1992- Safety Limit Spatial Peak Uncontrolled Exposure/ General Population							Body 1.6 W/kg (mW/g) Averaged over 1 gram				

13. 2-4 Measurement Results (WCDMA1900 Hotspot SAR)

Frequency		Mode	Power (dBm)		Power Drift (dB)	Configuration	Separation Distance	Measured SAR(mW/g)	Scaling Factor	Scaled SAR(mW/g)	Plot No.
MHz	Ch.		Tune-Up Limit	Conducted Power							
1 852.4	9262	WCDMA 1900	23.7	23.60	0.110	Rear	1.0 cm	1.01	1.023	1.034	-
1 880.0	9400		23.7	23.57	-0.018	Rear	1.0 cm	1.05	1.030	1.082	-
1 907.6	9538		23.7	23.64	0.081	Rear	1.0 cm	1.09	1.014	1.105	13
1 852.4	9262		23.7	23.60	0.114	Front	1.0 cm	1.13	1.023	1.156	-
1 880.0	9400		23.7	23.57	0.130	Front	1.0 cm	1.14	1.030	1.175	14
1 907.6	9538		23.7	23.64	0.013	Front	1.0 cm	1.11	1.014	1.125	-
1 880.0	9400		23.7	23.57	0.060	Left	1.0 cm	0.464	1.030	0.478	-
1 880.0	9400		23.7	23.57	-0.146	Bottom	1.0 cm	0.740	1.030	0.762	-
ANSI/ IEEE C95.1 - 1992- Safety Limit Spatial Peak Uncontrolled Exposure/ General Population							Body 1.6 W/kg (mW/g) Averaged over 1 gram				

13.2-5 Measurement Results (LTE Band 2 20MHz Hotspot SAR)

Frequency		Mode	Power (dBm)		Power Drift (dB)	Configuration	RB Size	RB Offset	Separation Distance	Measured SAR (mW/g)	Scaling Factor	Scaled SAR (mW/g)	Plot No.
MHz	Ch.		Tune-Up Limit	Conducted Power									
1 860	18700	QPSK	23.0	22.76	0.181	Rear	1	0	1.0 cm	1.03	1.057	1.089	-
1 880	18900		23.0	22.79	-0.119	Rear	1	0	1.0 cm	1.03	1.050	1.081	15
1 900	19100		23.0	22.63	0.010	Rear	1	0	1.0 cm	1.01	1.089	1.100	-
1 860	18700		22.0	21.60	0.040	Rear	50	0	1.0 cm	0.726	1.096	0.796	-
1 880	18900		22.0	21.62	0.022	Rear	50	0	1.0 cm	0.747	1.091	0.815	-
1 900	19100		22.0	21.55	-0.037	Rear	50	0	1.0 cm	0.747	1.109	0.829	-
1 860	18700		22.0	21.57	0.057	Rear	100	0	1.0 cm	0.722	1.104	0.797	-
1 860	18700		23.0	22.76	0.185	Front	1	0	1.0 cm	1.09	1.057	1.152	-
1 880	18900		23.0	22.79	0.109	Front	1	0	1.0 cm	1.1	1.050	1.154	16
1 900	19100		23.0	22.63	-0.198	Front	1	0	1.0 cm	1.07	1.089	1.165	-
1 860	18700		22.0	21.60	0.110	Front	50	0	1.0 cm	0.763	1.096	0.837	-
1 880	18900		22.0	21.62	0.039	Front	50	0	1.0 cm	0.802	1.091	0.875	-
1 900	19100		22.0	21.55	-0.048	Front	50	0	1.0 cm	0.766	1.109	0.850	-
1 860	18700		22.0	21.57	0.018	Front	100	0	1.0 cm	0.775	1.104	0.856	-
1 880	18900		23.0	22.79	0.150	Left	1	0	1.0 cm	0.402	1.050	0.422	-
1 880	18900		22.0	21.62	0.082	Left	50	0	1.0 cm	0.305	1.091	0.333	-
1 880	18900		23.0	22.79	-0.135	Bottom	1	0	1.0 cm	0.544	1.050	0.571	-
1 880	18900		22.0	21.62	0.015	Bottom	50	0	1.0 cm	0.402	1.091	0.439	-
ANSI/ IEEE C95.1 1992 – Safety Limit Spatial Peak Uncontrolled Exposure/ General Population							Body 1.6 W/kg (mW/g) Averaged over 1 gram						

13.2-6 Measurement Results (LTE Band 4 20MHz Hotspot SAR)

Frequency		Mode	Power (dBm)		Power Drift (dB)	Configuration	RB Size	RB Offset	Separation Distance	Measured SAR (mW/g)	Scaling Factor	Scaled SAR (mW/g)	Plot No.
MHz	Ch.		Tune-Up Limit	Conducted Power									
1 732.5	20175	QPSK	23.0	21.61	-0.138	Rear	1	0	1.0 cm	0.763	1.377	1.051	17
1 732.5	20175		22.0	20.40	0.044	Rear	50	0	1.0 cm	0.583	1.445	0.843	-
1 732.5	20175		22.0	20.29	-0.001	Rear	100	0	1.0 cm	0.546	1.483	0.809	-
1 732.5	20175		23.0	21.61	-0.196	Front	1	0	1.0 cm	0.932	1.377	1.284	18
1 732.5	20175		22.0	20.40	0.041	Front	50	0	1.0 cm	0.696	1.445	1.006	-
1 732.5	20175		22.0	20.29	0.034	Front	100	0	1.0 cm	0.668	1.483	0.990	-
1 732.5	20175		23.0	21.61	0.114	Left	1	0	1.0 cm	0.365	1.377	0.503	-
1 732.5	20175		22.0	20.40	0.092	Left	50	0	1.0 cm	0.282	1.445	0.408	-
1 732.5	20175		23.0	21.61	-0.129	Bottom	1	0	1.0 cm	0.592	1.377	0.815	-
1 732.5	20175		22.0	20.40	-0.059	Bottom	50	0	1.0 cm	0.464	1.445	0.671	-
1 732.5	20175		22.0	20.29	-0.012	Bottom	100	0	1.0 cm	0.376	1.483	0.557	-
ANSI/ IEEE C95.1 1992 – Safety Limit Spatial Peak Uncontrolled Exposure/ General Population							Body 1.6 W/kg (mW/g) Averaged over 1 gram						

13.2-7 Measurement Results (LTE Band 7 20MHz Hotspot SAR)

Frequency		Mode	Power (dBm)		Power Drift (dB)	Configuration	RB Size	RB Offset	Separation Distance	Measured SAR (mW/g)	Scaling Factor	Scaled SAR (mW/g)	Plot No.
MHz	Ch.		Tune-Up Limit	Conducted Power									
2 510	20850	QPSK	23.0	22.73	0.134	Rear	1	0	1.0 cm	0.629	1.064	0.669	19
2 535	21100		22.0	21.51	0.098	Rear	50	0	1.0 cm	0.411	1.119	0.460	-
2 510	20850		23.0	22.73	0.155	Front	1	0	1.0 cm	0.429	1.064	0.457	-
2 535	21100		22.0	21.51	-0.102	Front	50	0	1.0 cm	0.301	1.119	0.337	-
2 510	20850		23.0	22.73	0.067	Right	1	0	1.0 cm	0.548	1.064	0.583	-
2 535	21100		22.0	21.51	0.121	Right	50	0	1.0 cm	0.383	1.119	0.429	-
2 510	20850		23.0	22.73	0.048	Bottom	1	0	1.0 cm	0.311	1.064	0.331	-
2 535	21100		22.0	21.51	0.147	Bottom	50	0	1.0 cm	0.231	1.119	0.259	-
ANSI/ IEEE C95.1 1992 – Safety Limit Spatial Peak Uncontrolled Exposure/ General Population							Body 1.6 W/kg (mW/g) Averaged over 1 gram						

13. 2-8 Measurement Results (WLAN Hotspot SAR)

Frequency		Mode	Power (dBm)		Power Drift (dB)	Configuration	Data Rate	Separation Distance	Measured SAR (mW/g)	Scaling Factor	Scaled SAR (mW/g)	Plot No.
MHz	Ch.		Tune-Up Limit	Conducted Power								
2 412	1	802.11b	11.5	11.07	0.174	Rear	1Mbps	1.0 cm	0.016	1.104	0.018	20
			11.5	11.07	0.121	Front	1Mbps	1.0 cm	0.00981	1.104	0.011	-
			11.5	11.07	0.134	Right	1Mbps	1.0 cm	0.012	1.104	0.013	-
			11.5	11.07	0.187	Top	1Mbps	1.0 cm	0.013	1.104	0.014	-
ANSI/ IEEE C95.1 - 1992- Safety Limit Spatial Peak Uncontrolled Exposure/ General Population							Body 1.6 W/kg (mW/g) Averaged over 1 gram					

13.3-1 Measurement Results (DTS Body-worn SAR)

Frequency		Mode	Power (dBm)		Power Drift (dB)	Configuration	Data Rate	Separation Distance	Measured SAR (mW/g)	Scaling Factor	Scaled SAR (mW/g)	Plot No.
MHz	Ch.		Tune-Up Limit	Conducted Power								
2 412	1	802.11b	11.5	11.07	0.174	Rear	1Mbps	1.0 cm	0.016	1.104	0.018	20
ANSI/ IEEE C95.1 - 1992- Safety Limit Spatial Peak Uncontrolled Exposure/ General Population							Body 1.6 W/kg (mW/g) Averaged over 1 gram					

13.3-2 Measurement Results (Body-worn SAR)

Frequency		Mode	Power (dBm)		Power Drift (dB)	Configuration	Separation Distance	Measured SAR (mW/g)	Scaling Factor	Scaled SAR (mW/g)	Plot No.
MHz	Ch.		Tune-Up Limit	Conducted Power							
836.6	190	GSM 850	34.2	33.47	0.110	Rear	1.0 cm	0.531	1.183	0.628	21
824.2	128	GPRS 4Tx	29.2	28.73	0.036	Rear	1.0 cm	1.06	1.114	1.181	9
836.6	190	GPRS 4Tx	29.2	28.54	-0.051	Rear	1.0 cm	0.979	1.164	1.140	-
848.8	251	GPRS 4Tx	29.2	28.56	0.084	Rear	1.0 cm	0.827	1.159	0.958	-
1 880.0	661	GSM 1900	29.5	28.11	0.151	Rear	1.0 cm	0.261	1.377	0.359	22
1 880.0	661	GPRS 4Tx	25.0	24.43	-0.176	Rear	1.0 cm	0.478	1.140	0.545	10
836.6	4183	WCDMA 850	24.2	23.68	0.113	Rear	1.0 cm	0.608	1.127	0.685	12
1 852.4	9262	WCDMA1900	23.7	23.60	0.110	Rear	1.0 cm	1.01	1.023	1.034	-
1 880.0	9400	WCDMA1900	23.7	23.57	-0.018	Rear	1.0 cm	1.05	1.030	1.082	-
1 907.6	9538	WCDMA1900	23.7	23.64	0.081	Rear	1.0 cm	1.09	1.014	1.105	13
1 860	18700	LTE Band 2	23.0	22.76	0.181	Rear (1RB, 0offset)	1.0 cm	1.03	1.057	1.089	-
1 880	18900	LTE Band 2	23.0	22.79	-0.119	Rear (1RB, 0offset)	1.0 cm	1.03	1.050	1.081	15
1 900	19100	LTE Band 2	23.0	22.63	0.010	Rear (1RB, 0offset)	1.0 cm	1.01	1.089	1.100	-
1 860	18700	LTE Band 2	22.0	21.60	0.040	Rear (50RB, 0offset)	1.0 cm	0.726	1.096	0.796	-
1 880	18900	LTE Band 2	22.0	21.62	0.022	Rear (50RB, 0offset)	1.0 cm	0.747	1.091	0.815	-
1 900	19100	LTE Band 2	22.0	21.55	-0.037	Rear (50RB, 0offset)	1.0 cm	0.747	1.109	0.829	-
1 860	18700	LTE Band 2	22.0	21.57	0.057	Rear (100RB, 0offset)	1.0 cm	0.722	1.104	0.797	-
1 732.5	20175	LTE Band 4	23.0	21.61	-0.138	Rear (1RB, 0offset)	1.0 cm	0.763	1.377	1.051	17
1 732.5	20175	LTE Band 4	22.0	20.40	0.044	Rear (50RB, 0offset)	1.0 cm	0.583	1.445	0.843	-
1 732.5	20175	LTE Band 4	22.0	20.29	-0.001	Rear (100RB, 0offset)	1.0 cm	0.546	1.483	0.809	-
2 510	20850	LTE Band 7	23.0	22.73	0.134	Rear (1RB, 0offset)	1.0 cm	0.629	1.064	0.669	19
2 535	21100	LTE Band 7	22.0	21.51	0.098	Rear (50RB, 0offset)	1.0 cm	0.411	1.119	0.460	-
ANSI/ IEEE C95.1 - 1992- Safety Limit Spatial Peak Uncontrolled Exposure/ General Population								Body 1.6 W/kg (mW/g) Averaged over 1 gram			

13.4 SAR Test Notes

General Notes:

1. The test data reported are the worst-case SAR values according to test procedures specified in IEEE 1528-2003, FCC KDB Procedure.
2. Batteries are fully charged at the beginning of the SAR measurements. A standard battery was used for all SAR measurements.
3. Liquid tissue depth was at least 15.0 cm for all frequencies.
4. The manufacturer has confirmed that the device(s) tested have the same physical, mechanical and thermal characteristics and are within operational tolerances expected for production units.
5. SAR results were scaled to the maximum allowed power to demonstrate compliance per FCC KDB 447498 D01v05r02.
6. Device was tested using a fixed spacing for body-worn accessory testing. A separation distance of 10 mm was considered because the manufacturer has determined that there will be body-worn accessories available in the marketplace for users to support this separation distance.
7. Per FCC KDB 648474 D04v01r02, SAR was evaluated without a headset connected to the device. Since the standalone reported SAR was ≤ 1.2 W/kg, no additional SAR evaluation using a headset cable were required.

GSM/GPRS Test Notes:

1. This EUT'S GSM, GPRS and EDGE device class is B.
2. This device supports GSM VOIP in the head and the body-worn configurations therefore GPRS was additionally evaluated for head and body-worn compliance.
3. Body-Worn accessory testing is typically associated with voice operations. Therefore, GSM voice was evaluated for body-worn SAR.
4. Justification for reduced test configurations per KDB 941225 D01v03: The source-based time-averaged output power was evaluated for all multi-slot operations. The multi-slot configuration with the highest frame averaged output power was evaluated for SAR.
5. Per FCC KDB 447498 D01v05r02, if the reported (scaled) SAR measured at the middle channel or highest output power channel for each test configuration is ≤ 0.8 W/kg then testing at the other channels is not required for such test configuration(s). When the maximum output power variation across the required test channels is 1/2 dB, instead of the middle channel, the highest output power channel must be used.
6. Justification for reduced test configurations per KDB Publication 941225 D01v03 and October 2013 TCB Workshop Notes: The source-based frame-averaged output power was evaluated for all GPRS/EDGE slot configurations. The configuration with the highest target frame averaged output power was evaluated for hotspot SAR. When the maximum frame-averaged powers are equivalent across two or more slots (within 0.25 dB), the configuration with the most number of time slots was tested.

UMTS Notes:

1. The 12.2 kbps RMC mode is the primary mode.
2. UMTS mode in Body SAR was tested under RMC 12.2 kbps with HSPA inactive per KDB 941225 D01v03. HSPA SAR was not required since the average output power of the HSPA subtests was not more than 0.25 dB higher than the RMC level and Adjusted SAR value was less than 1.2 W/kg.
3. Per FCC KDB 447498 D01v05r02, if the reported (scaled) SAR measured at the middle channel or highest output power channel for each test configuration is ≤ 0.8 W/kg then testing at the other channels is not required for such test configuration(s). When the maximum output power variation across the channel highest output power channel was used.
4. UMTS SAR was tested under RMC 12.2 kbps with HSPA inactive per KDB publication 941225 D01v03. HSPA SAR was not required since the average output power of the HSPA subtests was not more than 0.25 dB higher than the RMC level and SAR was less than 1.2 W/kg.

LTE Notes:

1. LTE Considerations: LTE test configurations are determined according to SAR Evaluation Consideration for LTE Devices in FCC KDB 941225 D05v02r03.
2. According to FCC KDB 941225 D05v02r01:
 - i. When the reported SAR is ≤ 0.8 W/kg, testing of the 100%RB allocation and required test channels is not required. Otherwise, SAR is required for the remaining required test channels using the 1RB, 50%RB and 100%RB allocation with highest output power for that channel.
 - ii. Only one channel, and as reported SAR values for 1RB allocation and 50%RB allocation were less than 1.45W/Kg only the highest power RB offset for each allocation was required.
3. MPR is permanently implemented for this device by the manufacturer. The specific manufacturer target MPR is indicated alongside the SAR results. MPR is enabled for this device, according to target MPR is indicated alongside the SAR results.
4. A-MPR was disabled for all SAR tests by setting NS=01 on the base station simulator.
5. Pre-installed VOIP applications are considered.
6. SAR test reduction is applied using the following criteria:
 - Start with the largest channel bandwidth and measure SAR for QPSK with 1 RB, and 50% RB allocation, using the RB offset and required test channel combination with the highest maximum output power among RB offsets at the upper edge, middle and lower edge of each required test channel.
 - When the reported SAR is >0.8 W/kg, testing for other Channels is performed at the highest output power level for 1RB, and 50% RB configuration for that channel.
 - Testing for 100% RB configuration is performed at the highest output power level for 100% RB configuration across the Low, Mid and High Channel when the highest reported SAR for 1 RB and 50% RB are >0.8 W/kg, Testing for the remaining required channels is not needed because the reported SAR for 100% RB Allocation <1.45 W/kg.
 - Testing for 16-QAM modulation is not required because the reported SAR for QPSK is <1.45 W/kg and its output power is not more than 0.5 dB higher than that a QPSK. Testing for the other channel bandwidths is not required because the reported SAR for the highest channel bandwidth is <1.45 W/kg and its

WLAN Notes:

1. Justification for reduced test configurations for WIFI channels per KDB 248227 D01v01r02 and Oct. 2012 FCC/TCB Meeting Notes for 2.4 GHz WIFI: Highest average RF output power channel for the lowest data rate was selected for SAR evaluation in 802.11b. Other IEEE 802.11 modes (including 802.11 g/n) were not investigated since the average output powers over all channels and data rates were not more than 0.25 dB higher than the tested channel in the lowest data rate of IEEE 802.11b mode.
2. Since the maximum extrapolated peak SAR of the zoom scan for the maximum output channel was ≤ 1.6 W/kg and the reported 1g averaged SAR was < 0.8 W/kg, SAR testing on other default channels was not required.

14. SAR Measurement Variability and Uncertainty

In accordance with published RF Exposure KDB procedure 865664 D01v01r03 SAR measurement 100 MHz to 6 GHz. These additional measurements are repeated after the completion of all measurements requiring the same head or body tissue-equivalent medium in a frequency band. The test device should be returned to ambient conditions (normal room temperature) with the battery fully charged before it is re-mounted on the device holder for the repeated measurement(s) to minimize any unexpected variations in the repeated results.

- 1) Repeated measurement is not required when the original highest measured SAR is < 0.80 W/kg; steps 2) through 4) do not apply.
- 2) When the original highest measured SAR is ≥ 0.80 W/kg, repeat that measurement once.
- 3) Perform a second repeated measurement only if the ratio of largest to smallest SAR for the original and first repeated measurements is > 1.20 or when the original or repeated measurement is ≥ 1.45 W/kg (~ 10 % from the 1-g SAR limit).
- 4) Perform a third repeated measurement only if the original, first or second repeated measurement is ≥ 1.5 W/kg and the ratio of largest to smallest SAR for the original, first and second repeated measurements is > 1.20.

Frequency		Modulation	Battery	Configuration	Original SAR (mW/g)	Repeated SAR (mW/g)	Largest to Smallest SAR Ratio	Plot No.
MHz	Channel							
824.2	128	GSM 850	Standard	Rear	1.06	0.980	1.08	23
1 880	9400	WCDMA 1900	Standard	Front	1.14	1.11	1.03	24
1 732.5	20175	LTE Band 4	Standard	Front (1RB, 0offset)	0.932	0.919	1.01	25
2 510	20850	LTE Band 7	Standard	Right Ear (1RB, 0offset)	1.05	1.02	1.03	26

15. SAR Summation Scenario

	Position	Applicable Combination	Note
Simultaneous Transmission	Head	GSM 850 Voice + 2.4 GHz WiFi	
		GSM 1900 Voice + 2.4 GHz WiFi	
		GPRS 850 Data + 2.4 GHz WiFi	
		GPRS 1900 Data + 2.4 GHz WiFi	
		WCDMA850 + 2.4 GHz WiFi	
		WCDMA1900 + 2.4 GHz WiFi	
		LTE Band 2 Data + 2.4 GHz WiFi	*Pre-installed VOIP applications are considered.
		LTE Band 4 Data + 2.4 GHz WiFi	
		LTE Band 7 Data + 2.4 GHz WiFi	
	Hotspot	GPRS 850 Data + 2.4 GHz WiFi	
		GPRS 1900 Data + 2.4 GHz WiFi	
		WCDMA 850 + 2.4 GHz WiFi	
		WCDMA1900 + 2.4 GHz WiFi	
		LTE Band 2 Data + 2.4 GHz WiFi	*Pre-installed VOIP applications are considered.
		LTE Band 4 Data + 2.4 GHz WiFi	
		LTE Band 7 Data + 2.4 GHz WiFi	
	Body-worn	GSM 850 Voice + 2.4 GHz WiFi	
		GPRS 850 Data + 2.4 GHz WiFi	
		GSM 1900 Voice + 2.4 GHz WiFi	
		GPRS 1900 Data + 2.4 GHz WiFi	
		WCDMA 850 + 2.4 GHz WiFi	
		WCDMA1900 + 2.4 GHz WiFi	
		LTE Band 2 Data + 2.4 GHz WiFi	
		LTE Band 4 Data + 2.4 GHz WiFi	
		LTE Band 7 Data + 2.4 GHz WiFi	
		GSM 850 Voice + 2.4 GHz Bluetooth	
		GPRS VoIP 850 + 2.4 GHz Bluetooth	
		GSM 1900 Voice + 2.4 GHz Bluetooth	
		GPRS VoIP 1900 + 2.4 GHz Bluetooth	
		WCDMA 850 + 2.4 GHz Bluetooth	
		WCDMA1900 + 2.4 GHz Bluetooth	
		LTE Band 2 Data + 2.4 GHz Bluetooth	
		LTE Band 4 Data 2.4 GHz Bluetooth	
LTE Band 7 Data + 2.4 GHz Bluetooth			
* BT and WLAN are not simultaneous transmission.			

15.1 Simultaneous Transmission Summation for Head

Simultaneous Transmission Summation with 2.4 GHz WIFI

Band	Configuration	Scaled SAR (W/kg)	2.4 GHz WIFI Scaled SAR (W/kg)	Σ 1-g SAR (W/kg)
GSM 850	Left Cheek	0.523	0.206	0.729
	Left Tilt	0.290	0.150	0.440
	Right Cheek	0.531	0.108	0.639
	Right Tilt	0.342	0.089	0.431
GPRS 850	Left Cheek	0.809	0.206	1.015
	Left Tilt	0.475	0.150	0.625
	Right Cheek	0.956	0.108	1.064
	Right Tilt	0.567	0.089	0.656
GSM 1900	Left Cheek	0.493	0.206	0.699
	Left Tilt	0.361	0.150	0.511
	Right Cheek	0.420	0.108	0.528
	Right Tilt	0.154	0.089	0.243
GPRS 1900	Left Cheek	0.697	0.206	0.903
	Left Tilt	0.294	0.150	0.444
	Right Cheek	0.610	0.108	0.718
	Right Tilt	0.216	0.089	0.305
WCDMA 850	Left Cheek	0.388	0.206	0.594
	Left Tilt	0.227	0.150	0.377
	Right Cheek	0.485	0.108	0.593
	Right Tilt	0.302	0.089	0.391
WCDMA 1900	Left Cheek	1.115	0.206	1.321
	Left Tilt	0.449	0.150	0.599
	Right Cheek	0.781	0.108	0.889
	Right Tilt	0.350	0.089	0.439
LTE Band 2	Left Cheek	0.903	0.206	1.109
	Left Tilt	0.429	0.150	0.579
	Right Cheek	0.576	0.108	0.684
	Right Tilt	0.367	0.089	0.456
LTE Band 4	Left Cheek	0.762	0.206	0.968
	Left Tilt	0.304	0.150	0.454
	Right Cheek	0.938	0.108	1.046
	Right Tilt	0.191	0.089	0.280
LTE Band 7	Left Cheek	0.477	0.206	0.683
	Left Tilt	0.327	0.150	0.477
	Right Cheek	1.117	0.108	1.225
	Right Tilt	0.318	0.089	0.407

15.2 Simultaneous Transmission Summation for Body-Worn

Simultaneous Transmission Summation with Wifi (1 cm)

Band	configuration	Scaled SAR(W/kg)	2.4 GHz WIFI Scaled SAR (W/kg)	Σ 1-g SAR (W/kg)
GSM 850	Rear	0.628	0.018	0.646
GPRS 850	Rear	1.181	0.018	1.199
GSM 1900	Rear	0.359	0.018	0.377
GPRS 1900	Rear	0.545	0.018	0.563
WCDMA 850	Rear	0.685	0.018	0.703
WCDMA 1900	Rear	1.105	0.018	1.123
LTE Band 2	Rear	1.100	0.018	1.118
LTE Band 4	Rear	1.051	0.018	1.069
LTE Band 7	Rear	0.669	0.018	0.687

Simultaneous Transmission Summation with Bluetooth (1 cm)

Band	configuration	Scaled SAR(W/kg)	Estimated SAR BT SAR (W/kg)	Σ 1-g SAR (W/kg)
GSM 850	Rear	0.628	0.17	0.798
GPRS 850	Rear	1.181	0.17	1.351
GSM 1900	Rear	0.359	0.17	0.529
GPRS 1900	Rear	0.545	0.17	0.715
WCDMA 850	Rear	0.685	0.17	0.855
WCDMA 1900	Rear	1.105	0.17	1.275
LTE Band 2	Rear	1.100	0.17	1.270
LTE Band 4	Rear	1.051	0.17	1.221
LTE Band 7	Rear	0.669	0.17	0.839

15.3 Simultaneous Transmission Summation for Hotspot

Simultaneous Transmission Summation with 2.4 GHz WIFI (1 cm)

Band	configuration	Scaled SAR (W/kg)	2.4 GHz WIFI Scaled SAR (W/kg)	Σ 1-g SAR (W/kg)
GSM 850	Rear	1.181	0.018	1.199
	Front	0.769	0.011	0.780
	Left			
	Right	0.783	0.013	0.796
	Bottom	0.354		0.354
	Top		0.014	0.014
GSM 1900	Rear	0.545	0.018	0.563
	Front	0.770	0.011	0.781
	Left	0.310		0.310
	Right		0.013	0.013
	Bottom	0.448		0.448
	Top		0.014	0.014
WCDMA 850	Rear	0.685	0.018	0.703
	Front	0.561	0.011	0.572
	Left			
	Right	0.573	0.013	0.586
	Bottom	0.227		0.227
	Top		0.014	0.014
WCDMA 1900	Rear	1.105	0.018	1.123
	Front	1.175	0.011	1.186
	Left	0.478		0.478
	Right		0.013	0.013
	Bottom	0.762		0.762
	Top		0.014	0.014
LTE Band 2	Rear	1.100	0.018	1.118
	Front	1.165	0.011	1.176
	Left	0.422		0.422
	Right		0.013	0.013
	Bottom	0.571		0.571
	Top		0.014	0.014
LTE Band 4	Rear	1.051	0.018	1.069
	Front	1.284	0.011	1.295
	Left	0.503		0.503
	Right		0.013	0.013
	Bottom	0.815		0.815
	Top		0.014	0.014
LTE Band 7	Rear	0.669	0.018	0.687
	Front	0.457	0.011	0.468
	Left			
	Right	0.583	0.013	0.596
	Bottom	0.331		0.331
	Top		0.014	0.014

15.4 Simultaneous Transmission Conclusion

The above numerical summed SAR results for all the worst-case simultaneous transmission conditions were below the SAR limit. Therefore, the above analysis is sufficient to determine that simultaneous transmission cases will not exceed the SAR limit. And therefore no measured volumetric simultaneous SAR summation is required per FCC KDB Publication 447498 D01v05r02.

16. CONCLUSION

The SAR measurement indicates that the EUT complies with the RF radiation exposure limits of the ANSI/IEEE C95.1 1992.

These measurements are taken to simulate the RF effects exposure under worst-case conditions. Precise laboratory measures were taken to assure repeatability of the tests.

17. REFERENCES

- [1] Federal Communications Commission, OET Bulletin 65 (Edition 97-01), Supplement C (Edition 01-01), Evaluating Compliance with FCC Guidelines for Human Exposure to Radio frequency Electromagnetic Fields, July 2001.
- [2] IEEE Standards Coordinating Committee 34 – IEEE Std. 1528-2003, IEEE Recommended Practice for Determining the Peak Spatial-Average Specific Absorption Rate (SAR) in the Human Body from Wireless Communications Devices.
- [3] Federal Communications Commission, ET Docket 93-62, Guidelines for Evaluating the Environmental Effects of Radio frequency Radiation, Aug. 1996.
- [4] ANSI/IEEE C95.1 - 1991, American National Standard safety levels with respect to human exposure to radio frequency electromagnetic fields, 300 kHz to 100 GHz, New York: IEEE, Aug. 1992
- [5] ANSI/IEEE C95.3 - 1991, IEEE Recommended Practice for the Measurement of Potentially Hazardous Electromagnetic Fields - RF and Microwave, New York: IEEE, 1992.
- [6] NCRP, National Council on Radiation Protection and Measurements, Biological Effects and Exposure Criteria for Radio Frequency Electromagnetic Fields, NCRP Report No. 86, 1986. Reprinted Feb. 1995.
- [7] T. Schmid, O. Egger, N. Kuster, Automated E-field scanning system for dosimetric assessments, IEEE Transaction on Microwave Theory and Techniques, vol. 44, Jan. 1996, pp. 105-113.
- [8] K. Pokovic, T. Schmid, N. Kuster, Robust setup for precise calibration of E-field probes in tissue simulating liquids at mobile communications frequencies, ICECOM97, Oct. 1997, pp. 120-124.
- [9] K. Pokovic, T. Schmid, and N. Kuster, E-field Probe with improved isotropy in brain simulating liquids, Proceedings of the ELMAR, Zadar, Croatia, June 23-25, 1996, pp. 172-175.
- [10] Schmid & Partner Engineering AG, Application Note: Data Storage and Evaluation, June 1998, p2.
- [11] V. Hombach, K. Meier, M. Burkhardt, E. Kuhn, N. Kuster, The Dependence of EM Energy Absorption upon Human Head Modeling at 900 MHz, IEEE Transaction on Microwave Theory and Techniques, vol. 44 no. 10, Oct. 1996, pp. 1865-1873.
- [12] N. Kuster and Q. Balzano, Energy absorption mechanism by biological bodies in the near field of dipole antennas above 300 MHz, IEEE Transaction on Vehicular Technology, vol. 41, no. 1, Feb. 1992, pp. 17-23.
- [13] G. Hartsgrove, A. Kraszewski, A. Surowiec, Simulated Biological Materials for Electromagnetic Radiation Absorption Studies, University of Ottawa, Bioelectromagnetics, Canada: 1987, pp. 29-36.
- [14] Q. Balzano, O. Garay, T. Manning Jr., Electromagnetic Energy Exposure of Simulated Users of Portable Cellular Telephones, IEEE Transactions on Vehicular Technology, vol. 44, no.3, Aug. 1995.
- [15] W. Gander, Computer mathematic, Birkhaeuser, Basel, 1992.
- [16] W.H. Press, S.A. Teukolsky, W.T. Vetterling, and B.P. Flannery, Numerical Recipes in C, The Art of Scientific Computing, Second edition, Cambridge University Press, 1992.
- [17] Federal Communications Commission, OET Bulletin 65, Evaluating Compliance with FCC Guidelines for Human Exposure to Radiofrequency Electromagnetic Fields. Supplement C, Dec. 1997.
- [18] N. Kuster, R. Kastle, T. Schmid, Dosimetric evaluation of mobile communications equipment with known precision, IEEE Transaction on Communications, vol. E80-B, no. 5, May 1997, pp. 645-652.
- [19] CENELEC CLC/SC111B, European Prestandard (prENV 50166-2), Human Exposure to Electromagnetic Fields High-frequency: 10 kHz-300 GHz, Jan. 1995.
- [20] Prof. Dr. Niels Kuster, ETH, Eidgenössische Technische Hochschule Zürich, Dosimetric Evaluation of the Cellular Phone.
- [21] SAR Evaluation of Handsets with Multiple Transmitters and Antennas #648474.
- [22] SAR Measurement Procedure for 802.11 a/b/g Transmitters #KDB 248227.

Attachment 1. – SAR Test Plots

Test Laboratory: HCT CO., LTD
EUT Type: Cellular/PCS GSM/WCDMA/LTE Phone with WLAN and Bluetooth
Liquid Temperature: 22.1 °C
Ambient Temperature: 22.3 °C
Test Date: Jan. 14, 2015
Plot No. 1

DUT: LG-H340f; Type: Bar;

Communication System: GSM 850; Frequency: 836.6 MHz; Duty Cycle: 1:2.075
Medium parameters used (interpolated): $f = 836.6$ MHz; $\sigma = 0.916$ mho/m; $\epsilon_r = 41.9$; $\rho = 1000$ kg/m³
Phantom section: Right Section ; Measurement SW: DASY4, V4.7 Build 80; Postprocessing SW: SEMCAD, V1.8 Build 186

DASY4 Configuration:

- Probe: ET3DV6 - SN1630; ConvF(6.67, 6.67, 6.67); Calibrated: 2014-04-21
- Sensor-Surface: 4mm (Mechanical Surface Detection)
- Electronics: DAE4 Sn911; Calibrated: 2014-02-25
- Phantom: 1800/1900 Phantom; Type: SAM

GSM850 Head Right Touch 190ch GPRS 4Tx/Area Scan (61x101x1): Measurement grid: dx=15mm, dy=15mm

Maximum value of SAR (interpolated) = 0.855 mW/g

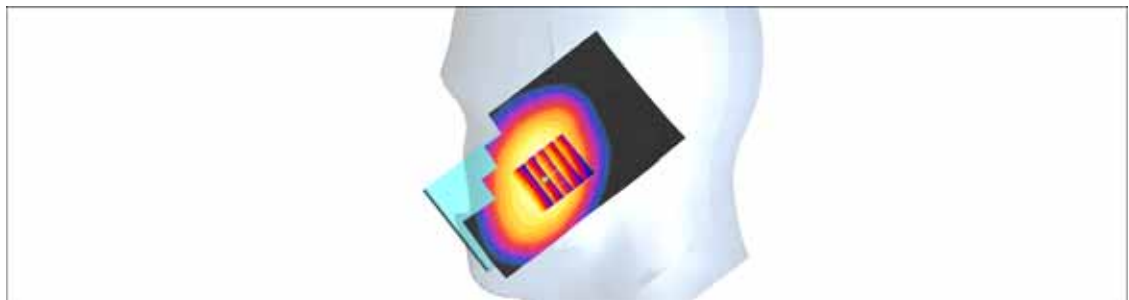
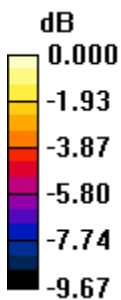
GSM850 Head Right Touch 190ch GPRS 4Tx/Zoom Scan (5x5x7)/Cube 0: Measurement grid: dx=8mm, dy=8mm, dz=5mm

Reference Value = 5.71 V/m; Power Drift = 0.174 dB

Peak SAR (extrapolated) = 1.06 W/kg

SAR(1 g) = 0.821 mW/g; SAR(10 g) = 0.627 mW/g

Maximum value of SAR (measured) = 0.864 mW/g



0 dB = 0.864mW/g

Test Laboratory: HCT CO., LTD
EUT Type: Cellular/PCS GSM/WCDMA/LTE Phone with WLAN and Bluetooth
Liquid Temperature: 22.9 °C
Ambient Temperature: 23.1 °C
Test Date: Jan. 16, 2015
Plot No. 2

DUT: LG-H340f; Type: Bar;

Communication System: GSM 1900; Frequency: 1880 MHz; Duty Cycle: 1:2.075
Medium parameters used: $f = 1880$ MHz; $\sigma = 1.42$ mho/m; $\epsilon_r = 38.9$; $\rho = 1000$ kg/m³
Phantom section: Left Section ; Measurement SW: DASY4, V4.7 Build 80; Postprocessing SW: SEMCAD, V1.8 Build 186

DASY4 Configuration:

- Probe: EX3DV4 - SN3863; ConvF(8.02, 8.02, 8.02); Calibrated: 2014-07-24
- Sensor-Surface: 2mm (Mechanical Surface Detection)
- Electronics: DAE4 Sn1225; Calibrated: 2014-03-24
- Phantom: 1800/1900 Phantom; Type: SAM

GSM1900 Left touch 661ch GPRS 4Tx/Area Scan (61x101x1): Measurement grid: dx=15mm, dy=15mm
Maximum value of SAR (interpolated) = 0.791 mW/g

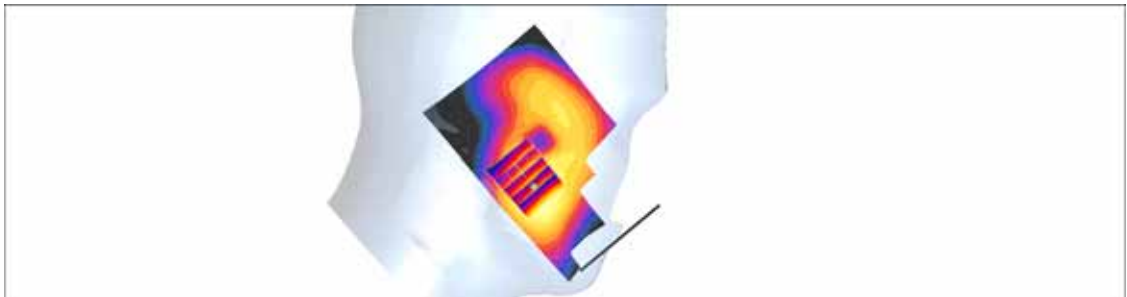
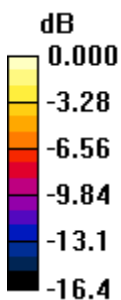
GSM1900 Left touch 661ch GPRS 4Tx/Zoom Scan (5x5x7)/Cube 0: Measurement grid: dx=8mm, dy=8mm, dz=5mm

Reference Value = 7.98 V/m; Power Drift = -0.138 dB

Peak SAR (extrapolated) = 1.00 W/kg

SAR(1 g) = 0.611 mW/g; SAR(10 g) = 0.370 mW/g

Maximum value of SAR (measured) = 0.783 mW/g



0 dB = 0.783mW/g

Test Laboratory: HCT CO., LTD
EUT Type: Cellular/PCS GSM/WCDMA/LTE Phone with WLAN and Bluetooth
Liquid Temperature: 22.1 °C
Ambient Temperature: 22.3 °C
Test Date: Jan. 14, 2015
Plot No. 3

DUT: LG-H340f; Type: Bar;

Communication System: WCDMA850; Frequency: 836.6 MHz; Duty Cycle: 1:1
Medium parameters used (interpolated): $f = 836.6$ MHz; $\sigma = 0.916$ mho/m; $\epsilon_r = 41.9$; $\rho = 1000$ kg/m³
Phantom section: Right Section ; Measurement SW: DASY4, V4.7 Build 80; Postprocessing SW: SEMCAD, V1.8 Build 186

DASY4 Configuration:

- Probe: ET3DV6 - SN1630; ConvF(6.67, 6.67, 6.67); Calibrated: 2014-04-21
- Sensor-Surface: 4mm (Mechanical Surface Detection)
- Electronics: DAE4 Sn911; Calibrated: 2014-02-25
- Phantom: 1800/1900 Phantom; Type: SAM

WCDMA850 Head Right Touch 4183ch/Area Scan (61x101x1): Measurement grid: dx=15mm, dy=15mm
Maximum value of SAR (interpolated) = 0.452 mW/g

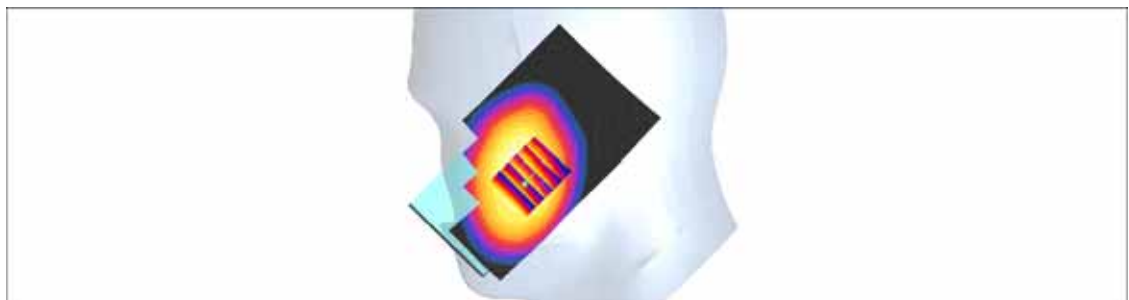
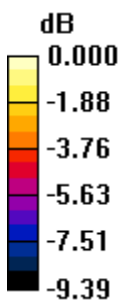
WCDMA850 Head Right Touch 4183ch/Zoom Scan (5x5x7)/Cube 0: Measurement grid: dx=8mm, dy=8mm, dz=5mm

Reference Value = 4.11 V/m; Power Drift = 0.122 dB

Peak SAR (extrapolated) = 0.582 W/kg

SAR(1 g) = 0.430 mW/g; SAR(10 g) = 0.328 mW/g

Maximum value of SAR (measured) = 0.451 mW/g



0 dB = 0.451mW/g

Test Laboratory: HCT CO., LTD
EUT Type: Cellular/PCS GSM/WCDMA/LTE Phone with WLAN and Bluetooth
Liquid Temperature: 22.9 °C
Ambient Temperature: 23.1 °C
Test Date: Jan. 16, 2015
Plot No. 4

DUT: LG-H340f; Type: Bar;

Communication System: WCDMA1900; Frequency: 1907.6 MHz; Duty Cycle: 1:1
Medium parameters used (interpolated): $f = 1907.6$ MHz; $\sigma = 1.44$ mho/m; $\epsilon_r = 38.9$; $\rho = 1000$ kg/m³
Phantom section: Left Section ; Measurement SW: DASY4, V4.7 Build 80; Postprocessing SW: SEMCAD, V1.8 Build 186

DASY4 Configuration:

- Probe: EX3DV4 - SN3863; ConvF(8.02, 8.02, 8.02); Calibrated: 2014-07-24
- Sensor-Surface: 2mm (Mechanical Surface Detection)
- Electronics: DAE4 Sn1225; Calibrated: 2014-03-24
- Phantom: 1800/1900 Phantom; Type: SAM

WCDMA1900 Left touch 9538ch/Area Scan (61x101x1): Measurement grid: dx=15mm, dy=15mm
Maximum value of SAR (interpolated) = 1.27 mW/g

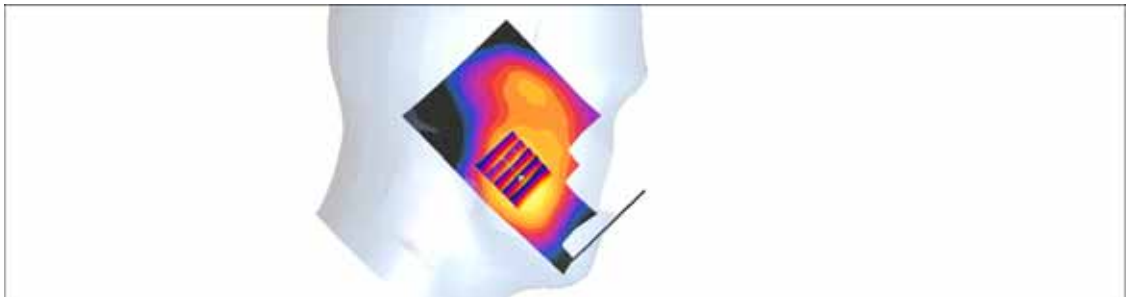
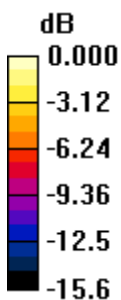
WCDMA1900 Left touch 9538ch/Zoom Scan (5x5x7)/Cube 0: Measurement grid: dx=8mm, dy=8mm, dz=5mm

Reference Value = 9.93 V/m; Power Drift = -0.190 dB

Peak SAR (extrapolated) = 1.81 W/kg

SAR(1 g) = 1.1 mW/g; SAR(10 g) = 0.654 mW/g

Maximum value of SAR (measured) = 1.48 mW/g



0 dB = 1.48mW/g

Test Laboratory: HCT CO., LTD
EUT Type: Cellular/PCS GSM/WCDMA/LTE Phone with WLAN and Bluetooth
Liquid Temperature: 21.8 °C
Ambient Temperature: 22.0 °C
Test Date: Jan. 23, 2015
Plot No. 5

DUT: LG-H340f; Type: Bar;

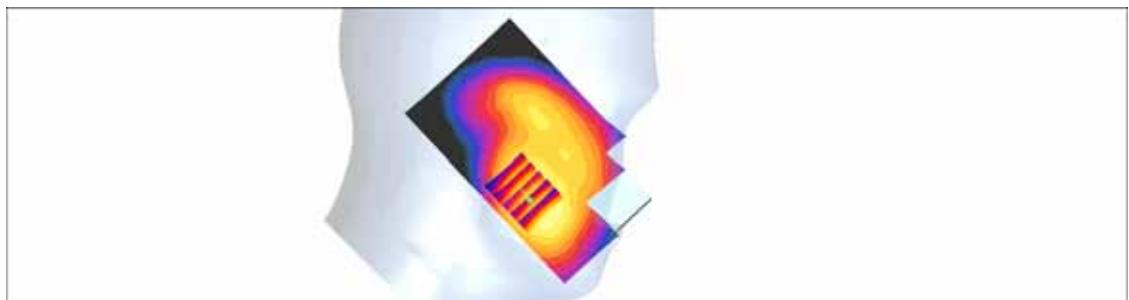
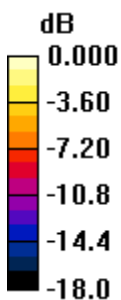
Communication System: LTE band 2; Frequency: 1880 MHz; Duty Cycle: 1:1
Medium parameters used: $f = 1880 \text{ MHz}$; $\sigma = 1.42 \text{ mho/m}$; $\epsilon_r = 38.9$; $\rho = 1000 \text{ kg/m}^3$
Phantom section: Left Section ; Measurement SW: DASY4, V4.7 Build 80; Postprocessing SW: SEMCAD, V1.8 Build 186

DASY4 Configuration:

- Probe: EX3DV4 - SN3903; ConvF(8.11, 8.11, 8.11); Calibrated: 2014-08-28
- Sensor-Surface: 2mm (Mechanical Surface Detection)
- Electronics: DAE4 Sn652; Calibrated: 2014-03-26
- Phantom: SAM 1800/1900 MHz; Type: SAM

LTE Band 2 Head Left touch QPSK 20MHz 1RB 0offset 18900ch/Area Scan (61x101x1): Measurement grid: $dx=15\text{mm}$, $dy=15\text{mm}$
Maximum value of SAR (interpolated) = 1.07 mW/g

LTE Band 2 Head Left touch QPSK 20MHz 1RB 0offset 18900ch/Zoom Scan (5x5x7)/Cube 0:
Measurement grid: $dx=8\text{mm}$, $dy=8\text{mm}$, $dz=5\text{mm}$
Reference Value = 7.55 V/m; Power Drift = 0.172 dB
Peak SAR (extrapolated) = 1.35 W/kg
SAR(1 g) = 0.860 mW/g; SAR(10 g) = 0.529 mW/g
Maximum value of SAR (measured) = 1.13 mW/g



0 dB = 1.13mW/g

Test Laboratory: HCT CO., LTD
EUT Type: Cellular/PCS GSM/WCDMA/LTE Phone with WLAN and Bluetooth
Liquid Temperature: 22.9 °C
Ambient Temperature: 23.1 °C
Test Date: Jan. 19, 2015
Plot No. 6

DUT: LG-H340f; Type: Bar;

Communication System: LTE Band 4; Frequency: 1732.5 MHz; Duty Cycle: 1:1
Medium parameters used (interpolated): $f = 1732.5$ MHz; $\sigma = 1.33$ mho/m; $\epsilon_r = 40.4$; $\rho = 1000$ kg/m³
Phantom section: Right Section ; Measurement SW: DASY4, V4.7 Build 80; Postprocessing SW: SEMCAD, V1.8 Build 186

DASY4 Configuration:

- Probe: EX3DV4 - SN3863; ConvF(8.38, 8.38, 8.38); Calibrated: 2014-07-24
- Sensor-Surface: 2mm (Mechanical Surface Detection)
- Electronics: DAE4 Sn1225; Calibrated: 2014-03-24
- Phantom: 1800/1900 Phantom; Type: SAM

LTE4 Right Touch QPSK 20Mhz 1RB Offset 20175ch/Area Scan (61x101x1): Measurement grid: dx=15mm, dy=15mm

Maximum value of SAR (interpolated) = 0.737 mW/g

LTE4 Right Touch QPSK 20Mhz 1RB Offset 20175ch/Zoom Scan (5x5x7)/Cube 0: Measurement grid:

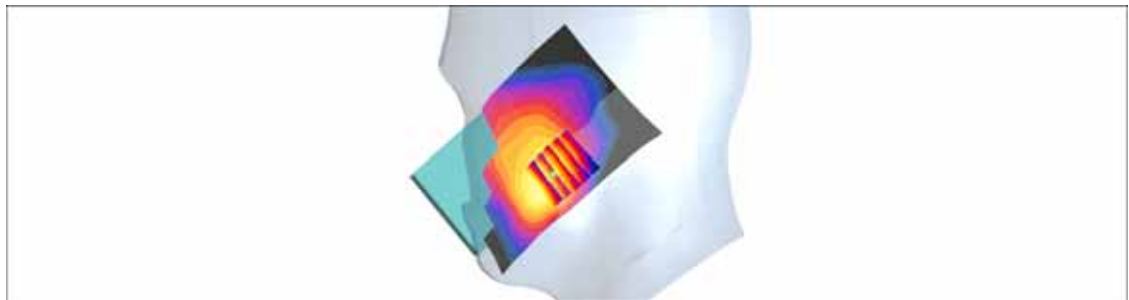
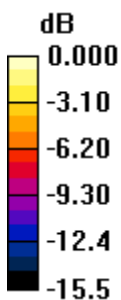
dx=8mm, dy=8mm, dz=5mm

Reference Value = 6.05 V/m; Power Drift = 0.184 dB

Peak SAR (extrapolated) = 1.05 W/kg

SAR(1 g) = 0.681 mW/g; SAR(10 g) = 0.442 mW/g

Maximum value of SAR (measured) = 0.880 mW/g



0 dB = 0.880mW/g

Test Laboratory: HCT CO., LTD
EUT Type: Cellular/PCS GSM/WCDMA/LTE Phone with WLAN and Bluetooth
Liquid Temperature: 21.1 °C
Ambient Temperature: 21.3 °C
Test Date: Jan. 22, 2015
Plot No. 7

DUT: LG-H340f; Type: Bar;

Communication System: LTE Band 7; Frequency: 2510 MHz; Duty Cycle: 1:1
Medium parameters used: $f = 2510$ MHz; $\sigma = 1.93$ mho/m; $\epsilon_r = 38.9$; $\rho = 1000$ kg/m³
Phantom section: Right Section ; Measurement SW: DASY4, V4.7 Build 80; Postprocessing SW: SEMCAD, V1.8 Build 186

DASY4 Configuration:

- Probe: EX3DV4 - SN3863; ConvF(7.05, 7.05, 7.05); Calibrated: 2014-07-24
- Sensor-Surface: 2mm (Mechanical Surface Detection)
- Electronics: DAE4 Sn1225; Calibrated: 2014-03-24
- Phantom: 800/900 Phantom; Type: SAM

LTE7 Left Touch QPSK 20Mhz 1RB 0offset 20850ch/Area Scan (71x121x1): Measurement grid: dx=12mm, dy=12mm

Maximum value of SAR (interpolated) = 1.56 mW/g

LTE7 Left Touch QPSK 20Mhz 1RB 0offset 20850ch/Zoom Scan (7x7x7)/Cube 0: Measurement grid:

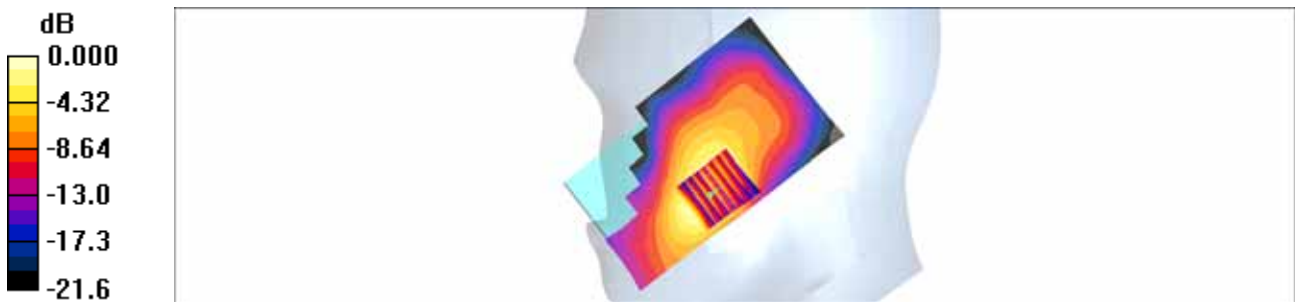
dx=5mm, dy=5mm, dz=5mm

Reference Value = 6.13 V/m; Power Drift = 0.146 dB

Peak SAR (extrapolated) = 1.82 W/kg

SAR(1 g) = 1.05 mW/g; SAR(10 g) = 0.579 mW/g

Maximum value of SAR (measured) = 1.44 mW/g



0 dB = 1.44mW/g

Test Laboratory: HCT CO., LTD
EUT Type: Cellular/PCS GSM/WCDMA/LTE Phone with WLAN and Bluetooth
Liquid Temperature: 21.2 °C
Ambient Temperature: 21.4 °C
Test Date: Jan. 20, 2015
Plot No. 8

DUT: LG-H340f; Type: Bar;

Communication System: 2450MHz FCC; Frequency: 2412 MHz; Duty Cycle: 1:1
Medium parameters used (interpolated): $f = 2412$ MHz; $\sigma = 1.79$ mho/m; $\epsilon_r = 37.8$; $\rho = 1000$ kg/m³
Phantom section: Left Section ; Measurement SW: DASY4, V4.7 Build 80; Postprocessing SW: SEMCAD, V1.8 Build 186

DASY4 Configuration:

- Probe: EX3DV4 - SN3863; ConvF(7.15, 7.15, 7.15); Calibrated: 2014-07-24
- Sensor-Surface: 2mm (Mechanical Surface Detection)
- Electronics: DAE4 Sn1225; Calibrated: 2014-03-24
- Phantom: 800/900 Phantom; Type: SAM

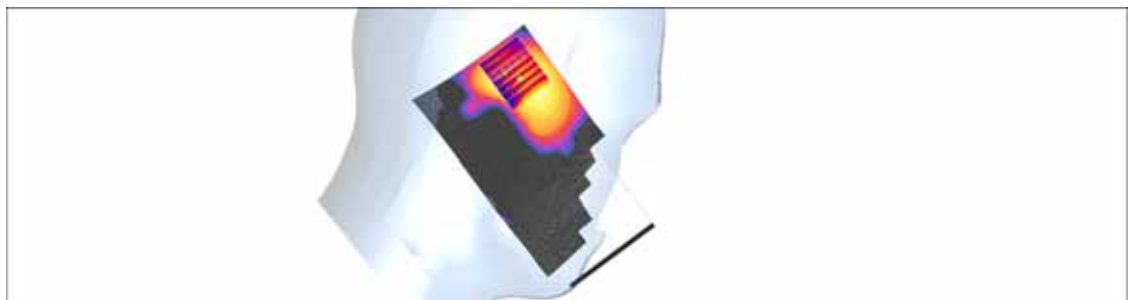
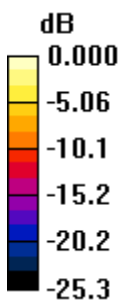
802.11b Left Touch 1ch 1Mbps/Area Scan (71x131x1): Measurement grid: dx=12mm, dy=12mm
Maximum value of SAR (interpolated) = 0.277 mW/g

802.11b Left Touch 1ch 1Mbps/Zoom Scan (7x7x7)/Cube 0: Measurement grid: dx=5mm, dy=5mm, dz=5mm

Reference Value = 3.82 V/m; Power Drift = -0.145 dB
Peak SAR (extrapolated) = 0.418 W/kg

SAR(1 g) = 0.187 mW/g; SAR(10 g) = 0.095 mW/g

Maximum value of SAR (measured) = 0.294 mW/g



0 dB = 0.294mW/g

Test Laboratory: HCT CO., LTD
EUT Type: Cellular/PCS GSM/WCDMA/LTE Phone with WLAN and Bluetooth
Liquid Temperature: 23.0 °C
Ambient Temperature: 23.2 °C
Test Date: Jan. 15, 2015
Plot No. 9

DUT: LG-H340f; Type: Bar;

Communication System: GSM 850; Frequency: 824.2 MHz; Duty Cycle: 1:2.075
Medium parameters used: $f = 825$ MHz; $\sigma = 0.979$ mho/m; $\epsilon_r = 56.9$; $\rho = 1000$ kg/m³
Phantom section: Center Section ; Measurement SW: DASY4, V4.7 Build 80; Postprocessing SW: SEMCAD, V1.8 Build 186

DASY4 Configuration:

- Probe: EX3DV4 - SN3863; ConvF(9.43, 9.43, 9.43); Calibrated: 2014-07-24
- Sensor-Surface: 2mm (Mechanical Surface Detection)
- Electronics: DAE4 Sn1225; Calibrated: 2014-03-24
- Phantom: Triple Flat Phantom 5.1C_20120905; Type: QD 000 P51 CA

GSM850 Body Rear 128ch GPRS 4TX/Area Scan (61x101x1): Measurement grid: dx=15mm, dy=15mm
Maximum value of SAR (interpolated) = 1.24 mW/g

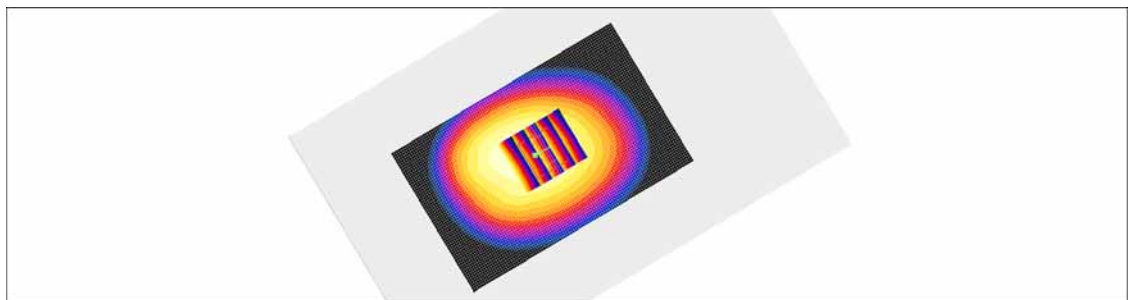
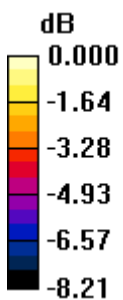
GSM850 Body Rear 128ch GPRS 4TX/Zoom Scan (5x5x7)/Cube 0: Measurement grid: dx=8mm, dy=8mm, dz=5mm

Reference Value = 32.7 V/m; Power Drift = 0.036 dB

Peak SAR (extrapolated) = 1.35 W/kg

SAR(1 g) = 1.06 mW/g; SAR(10 g) = 0.809 mW/g

Maximum value of SAR (measured) = 1.22 mW/g



0 dB = 1.22mW/g

Test Laboratory: HCT CO., LTD
EUT Type: Cellular/PCS GSM/WCDMA/LTE Phone with WLAN and Bluetooth
Liquid Temperature: 22.9 °C
Ambient Temperature: 23.1 °C
Test Date: Jan. 16, 2015
Plot No. 10

DUT: LG-H340f; Type: Bar;

Communication System: GSM 1900; Frequency: 1880 MHz; Duty Cycle: 1:2.075
Medium parameters used: $f = 1880$ MHz; $\sigma = 1.53$ mho/m; $\epsilon_r = 54.1$; $\rho = 1000$ kg/m³
Phantom section: Center Section ; Measurement SW: DASY4, V4.7 Build 80; Postprocessing SW: SEMCAD, V1.8 Build 186

DASY4 Configuration:

- Probe: EX3DV4 - SN3863; ConvF(7.36, 7.36, 7.36); Calibrated: 2014-07-24
- Sensor-Surface: 2mm (Mechanical Surface Detection)
- Electronics: DAE4 Sn1225; Calibrated: 2014-03-24
- Phantom: Triple Flat Phantom 5.1C_20120905; Type: QD 000 P51 CA

GSM1900 Body Rear 661ch GPRS 4TX/Area Scan (61x101x1): Measurement grid: dx=15mm, dy=15mm
Maximum value of SAR (interpolated) = 0.595 mW/g

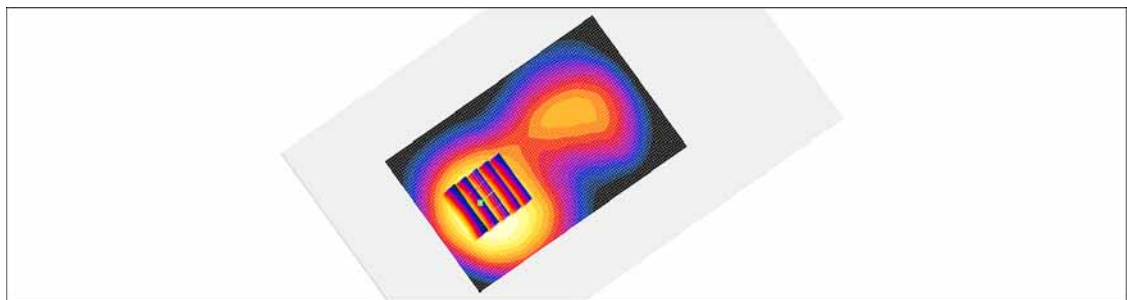
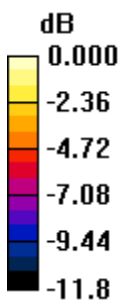
GSM1900 Body Rear 661ch GPRS 4TX/Zoom Scan (5x5x7)/Cube 0: Measurement grid: dx=8mm, dy=8mm, dz=5mm

Reference Value = 12.8 V/m; Power Drift = -0.176 dB

Peak SAR (extrapolated) = 0.676 W/kg

SAR(1 g) = 0.478 mW/g; SAR(10 g) = 0.326 mW/g

Maximum value of SAR (measured) = 0.580 mW/g



0 dB = 0.580mW/g

Test Laboratory: HCT CO., LTD
EUT Type: Cellular/PCS GSM/WCDMA/LTE Phone with WLAN and Bluetooth
Liquid Temperature: 22.9 °C
Ambient Temperature: 23.1 °C
Test Date: Jan. 16, 2015
Plot No. 11

DUT: LG-H340f; Type: Bar;

Communication System: GSM 1900; Frequency: 1880 MHz; Duty Cycle: 1:2.075
Medium parameters used: $f = 1880$ MHz; $\sigma = 1.53$ mho/m; $\epsilon_r = 54.1$; $\rho = 1000$ kg/m³
Phantom section: Center Section ; Measurement SW: DASY4, V4.7 Build 80; Postprocessing SW: SEMCAD, V1.8 Build 186

DASY4 Configuration:

- Probe: EX3DV4 - SN3863; ConvF(7.36, 7.36, 7.36); Calibrated: 2014-07-24
- Sensor-Surface: 2mm (Mechanical Surface Detection)
- Electronics: DAE4 Sn1225; Calibrated: 2014-03-24
- Phantom: Triple Flat Phantom 5.1C_20120905; Type: QD 000 P51 CA

GSM1900 Body Front 661ch GPRS 4Tx/Area Scan (61x101x1): Measurement grid: dx=15mm, dy=15mm
Maximum value of SAR (interpolated) = 0.838 mW/g

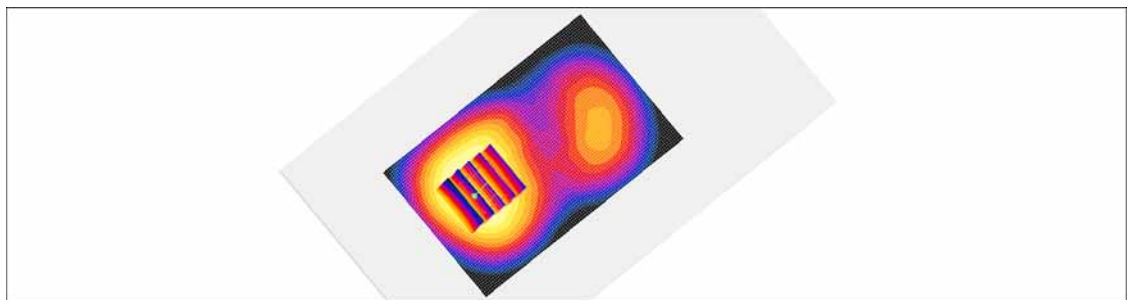
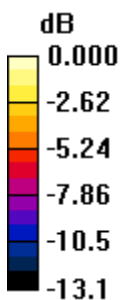
GSM1900 Body Front 661ch GPRS 4Tx/Zoom Scan (5x5x7)/Cube 0: Measurement grid: dx=8mm, dy=8mm, dz=5mm

Reference Value = 10.5 V/m; Power Drift = 0.166 dB

Peak SAR (extrapolated) = 0.955 W/kg

SAR(1 g) = 0.675 mW/g; SAR(10 g) = 0.448 mW/g

Maximum value of SAR (measured) = 0.805 mW/g



0 dB = 0.805mW/g

Test Laboratory: HCT CO., LTD
EUT Type: Cellular/PCS GSM/WCDMA/LTE Phone with WLAN and Bluetooth
Liquid Temperature: 23.0 °C
Ambient Temperature: 23.2 °C
Test Date: Jan. 15, 2015
Plot No. 12

DUT: LG-H340f; Type: Bar;

Communication System: WCDMA850; Frequency: 836.6 MHz; Duty Cycle: 1:1
Medium parameters used (interpolated): $f = 836.6$ MHz; $\sigma = 0.987$ mho/m; $\epsilon_r = 56.8$; $\rho = 1000$ kg/m³
Phantom section: Center Section ; Measurement SW: DASY4, V4.7 Build 80; Postprocessing SW: SEMCAD, V1.8 Build 186

DASY4 Configuration:

- Probe: EX3DV4 - SN3863; ConvF(9.43, 9.43, 9.43); Calibrated: 2014-07-24
- Sensor-Surface: 2mm (Mechanical Surface Detection)
- Electronics: DAE4 Sn1225; Calibrated: 2014-03-24
- Phantom: Triple Flat Phantom 5.1C_20120905; Type: QD 000 P51 CA

WCDMA850 Body Rear/Area Scan (61x101x1): Measurement grid: dx=15mm, dy=15mm
Maximum value of SAR (interpolated) = 0.700 mW/g

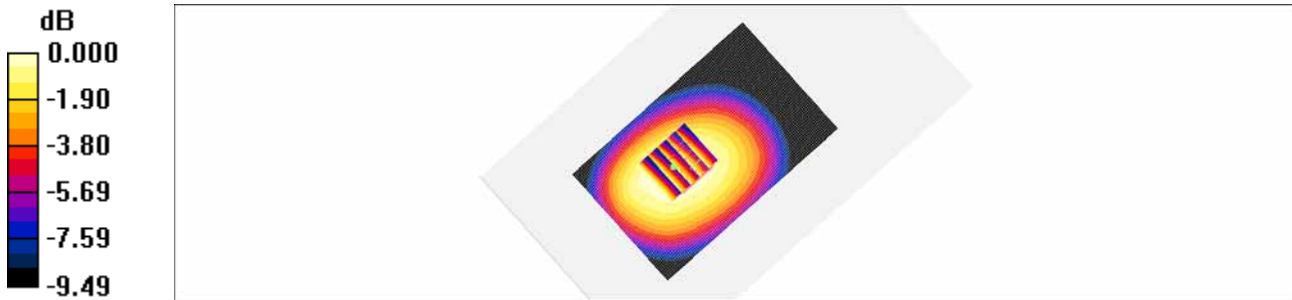
WCDMA850 Body Rear/Zoom Scan (5x5x7)/Cube 0: Measurement grid: dx=8mm, dy=8mm, dz=5mm

Reference Value = 20.3 V/m; Power Drift = 0.113 dB

Peak SAR (extrapolated) = 0.768 W/kg

SAR(1 g) = 0.608 mW/g; SAR(10 g) = 0.463 mW/g

Maximum value of SAR (measured) = 0.695 mW/g



0 dB = 0.695mW/g

Test Laboratory: HCT CO., LTD
EUT Type: Cellular/PCS GSM/WCDMA/LTE Phone with WLAN and Bluetooth
Liquid Temperature: 22.9 °C
Ambient Temperature: 23.1 °C
Test Date: Jan. 16, 2015
Plot No. 13

DUT: LG-H340f; Type: Bar;

Communication System: WCDMA1900; Frequency: 1907.6 MHz; Duty Cycle: 1:1
Medium parameters used (interpolated): $f = 1907.6$ MHz; $\sigma = 1.55$ mho/m; $\epsilon_r = 53.9$; $\rho = 1000$ kg/m³
Phantom section: Center Section ; Measurement SW: DASY4, V4.7 Build 80; Postprocessing SW: SEMCAD, V1.8 Build 186

DASY4 Configuration:

- Probe: EX3DV4 - SN3863; ConvF(7.36, 7.36, 7.36); Calibrated: 2014-07-24
- Sensor-Surface: 2mm (Mechanical Surface Detection)
- Electronics: DAE4 Sn1225; Calibrated: 2014-03-24
- Phantom: Triple Flat Phantom 5.1C; Type: QD 000 P51 CA

WCDMA1900 Body Rear 9538ch/Area Scan (61x101x1): Measurement grid: dx=15mm, dy=15mm
Maximum value of SAR (interpolated) = 1.26 mW/g

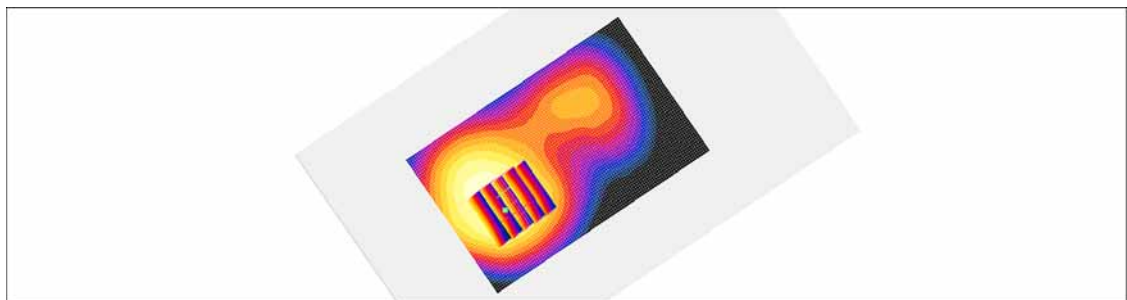
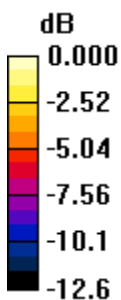
WCDMA1900 Body Rear 9538ch/Zoom Scan (5x5x7)/Cube 0: Measurement grid: dx=8mm, dy=8mm, dz=5mm

Reference Value = 14.7 V/m; Power Drift = 0.081 dB

Peak SAR (extrapolated) = 1.52 W/kg

SAR(1 g) = 1.09 mW/g; SAR(10 g) = 0.747 mW/g

Maximum value of SAR (measured) = 1.32 mW/g



0 dB = 1.32mW/g

Test Laboratory: HCT CO., LTD
EUT Type: Cellular/PCS GSM/WCDMA/LTE Phone with WLAN and Bluetooth
Liquid Temperature: 22.9 °C
Ambient Temperature: 23.1 °C
Test Date: Jan. 16, 2015
Plot No. 14

DUT: LG-H340f; Type: Bar;

Communication System: WCDMA1900; Frequency: 1880 MHz; Duty Cycle: 1:1
Medium parameters used: $f = 1880$ MHz; $\sigma = 1.53$ mho/m; $\epsilon_r = 54.1$; $\rho = 1000$ kg/m³
Phantom section: Center Section ; Measurement SW: DASY4, V4.7 Build 80; Postprocessing SW: SEMCAD, V1.8 Build 186

DASY4 Configuration:

- Probe: EX3DV4 - SN3863; ConvF(7.36, 7.36, 7.36); Calibrated: 2014-07-24
- Sensor-Surface: 2mm (Mechanical Surface Detection)
- Electronics: DAE4 Sn1225; Calibrated: 2014-03-24
- Phantom: Triple Flat Phantom 5.1C; Type: QD 000 P51 CA

WCDMA1900 Body Front 9400ch/Area Scan (61x101x1): Measurement grid: dx=15mm, dy=15mm
Maximum value of SAR (interpolated) = 1.44 mW/g

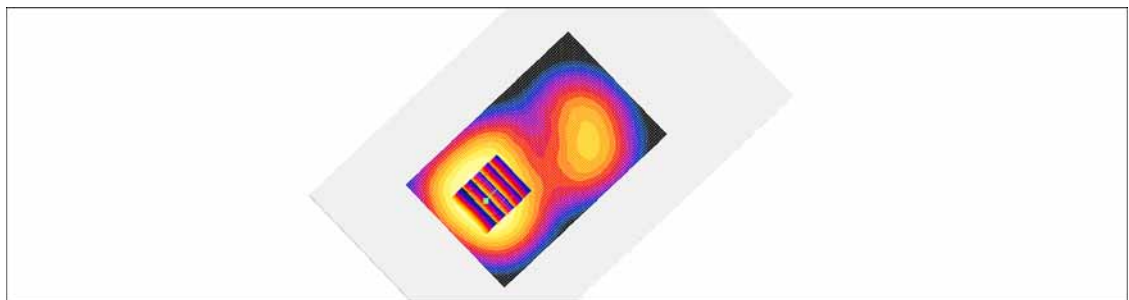
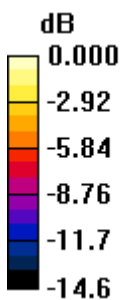
WCDMA1900 Body Front 9400ch/Zoom Scan (5x5x7)/Cube 0: Measurement grid: dx=8mm, dy=8mm, dz=5mm

Reference Value = 14.9 V/m; Power Drift = 0.130 dB

Peak SAR (extrapolated) = 1.73 W/kg

SAR(1 g) = 1.14 mW/g; SAR(10 g) = 0.730 mW/g

Maximum value of SAR (measured) = 1.46 mW/g



0 dB = 1.46mW/g

Test Laboratory: HCT CO., LTD
EUT Type: Cellular/PCS GSM/WCDMA/LTE Phone with WLAN and Bluetooth
Liquid Temperature: 21.8 °C
Ambient Temperature: 22.0 °C
Test Date: Jan. 23, 2015
Plot No. 15

DUT: LG-H340f; Type: Bar;

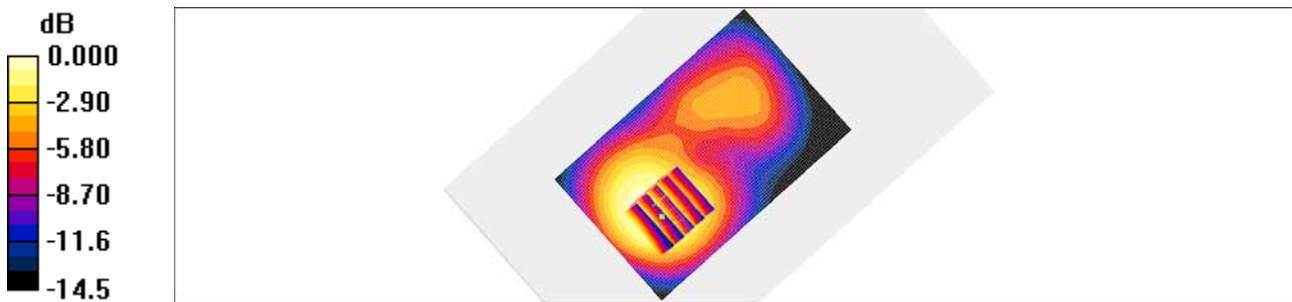
Communication System: LTE band 2; Frequency: 1880 MHz; Duty Cycle: 1:1
Medium parameters used: $f = 1880 \text{ MHz}$; $\sigma = 1.53 \text{ mho/m}$; $\epsilon_r = 54.1$; $\rho = 1000 \text{ kg/m}^3$
Phantom section: Center Section ; Measurement SW: DASY4, V4.7 Build 80; Postprocessing SW: SEMCAD, V1.8 Build 186

DASY4 Configuration:

- Probe: EX3DV4 - SN3903; ConvF(7.72, 7.72, 7.72); Calibrated: 2014-08-28
- Sensor-Surface: 2mm (Mechanical Surface Detection)
- Electronics: DAE4 Sn652; Calibrated: 2014-03-26
- Phantom: Triple Flat Phantom 5.1C_20120905; Type: QD 000 P51 CA

LTE Band 2 Body Rear QPSK 20MHz 1RB 0offset 18900ch/Area Scan (61x101x1): Measurement grid:
 $dx=15\text{mm}$, $dy=15\text{mm}$
Maximum value of SAR (interpolated) = 1.26 mW/g

LTE Band 2 Body Rear QPSK 20MHz 1RB 0offset 18900ch/Zoom Scan (5x5x7)/Cube 0: Measurement grid: $dx=8\text{mm}$, $dy=8\text{mm}$, $dz=5\text{mm}$
Reference Value = 13.4 V/m; Power Drift = -0.119 dB
Peak SAR (extrapolated) = 1.49 W/kg
SAR(1 g) = 1.03 mW/g; SAR(10 g) = 0.690 mW/g
Maximum value of SAR (measured) = 1.27 mW/g



0 dB = 1.27mW/g

Test Laboratory: HCT CO., LTD
EUT Type: Cellular/PCS GSM/WCDMA/LTE Phone with WLAN and Bluetooth
Liquid Temperature: 21.8 °C
Ambient Temperature: 22.0 °C
Test Date: Jan. 23, 2015
Plot No. 16

DUT: LG-H340f; Type: Bar;

Communication System: LTE band 2; Frequency: 1880 MHz; Duty Cycle: 1:1
Medium parameters used: $f = 1880$ MHz; $\sigma = 1.53$ mho/m; $\epsilon_r = 54.1$; $\rho = 1000$ kg/m³
Phantom section: Center Section ; Measurement SW: DASY4, V4.7 Build 80; Postprocessing SW: SEMCAD, V1.8 Build 186

DASY4 Configuration:

- Probe: EX3DV4 - SN3903; ConvF(7.72, 7.72, 7.72); Calibrated: 2014-08-28
- Sensor-Surface: 2mm (Mechanical Surface Detection)
- Electronics: DAE4 Sn652; Calibrated: 2014-03-26
- Phantom: Triple Flat Phantom 5.1C_20120905; Type: QD 000 P51 CA

LTE Band 2 Body Front QPSK 20MHz 1RB 0offset 18900ch/Area Scan (61x101x1): Measurement grid:

dx=15mm, dy=15mm

Maximum value of SAR (interpolated) = 1.35 mW/g

LTE Band 2 Body Front QPSK 20MHz 1RB 0offset 18900ch/Zoom Scan (5x5x7)/Cube 0: Measurement

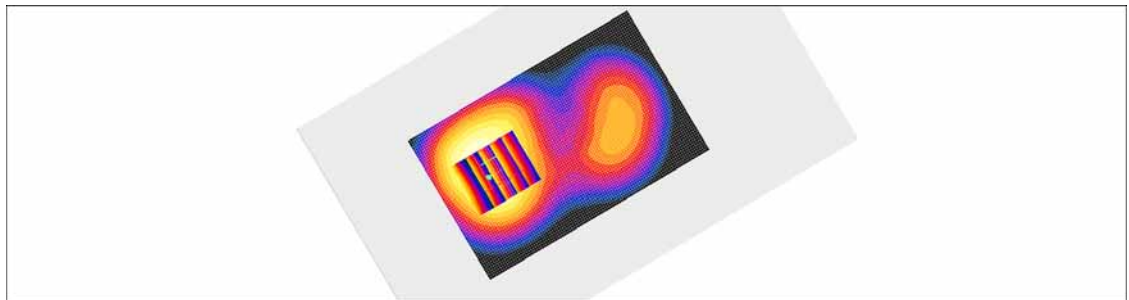
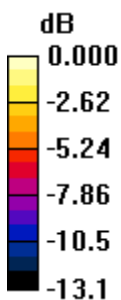
grid: dx=8mm, dy=8mm, dz=5mm

Reference Value = 13.8 V/m; Power Drift = 0.109 dB

Peak SAR (extrapolated) = 1.59 W/kg

SAR(1 g) = 1.1 mW/g; SAR(10 g) = 0.732 mW/g

Maximum value of SAR (measured) = 1.35 mW/g



0 dB = 1.35mW/g

Test Laboratory: HCT CO., LTD
EUT Type: Cellular/PCS GSM/WCDMA/LTE Phone with WLAN and Bluetooth
Liquid Temperature: 22.9 °C
Ambient Temperature: 23.1 °C
Test Date: Jan. 19, 2015
Plot No. 17

DUT: LG-H340f; Type: Bar;

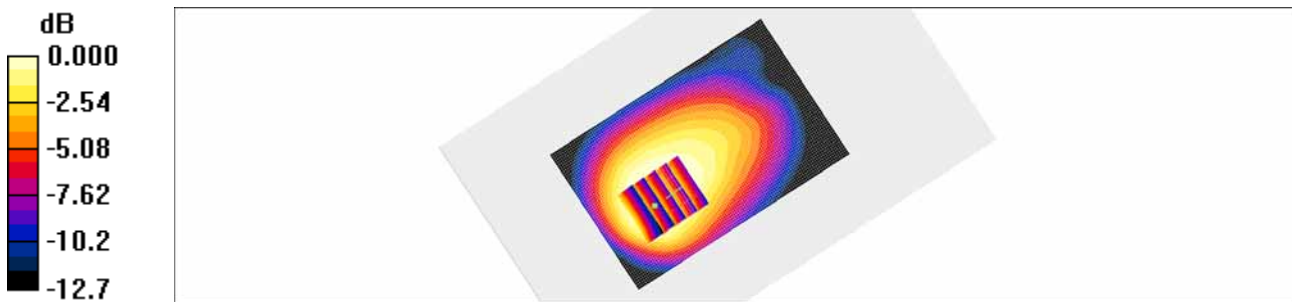
Communication System: LTE Band 4; Frequency: 1732.5 MHz; Duty Cycle: 1:1
Medium parameters used (interpolated): $f = 1732.5$ MHz; $\sigma = 1.45$ mho/m; $\epsilon_r = 55.1$; $\rho = 1000$ kg/m³
Phantom section: Center Section ; Measurement SW: DASY4, V4.7 Build 80; Postprocessing SW: SEMCAD, V1.8 Build 186

DASY4 Configuration:

- Probe: EX3DV4 - SN3903; ConvF(8.02, 8.02, 8.02); Calibrated: 2014-08-28
- Sensor-Surface: 2mm (Mechanical Surface Detection)
- Electronics: DAE4 Sn652; Calibrated: 2014-03-26
- Phantom: Triple Flat Phantom 5.1C_20120905; Type: QD 000 P51 CA

LTE Band 4 Body Rear QPSK 20MHz 1RB 0offset 20175ch/Area Scan (61x101x1): Measurement grid:
dx=15mm, dy=15mm
Maximum value of SAR (interpolated) = 1.11 mW/g

LTE Band 4 Body Rear QPSK 20MHz 1RB 0offset 20175ch/Zoom Scan (5x5x7)/Cube 0: Measurement grid: dx=8mm, dy=8mm, dz=5mm
Reference Value = 19.4 V/m; Power Drift = -0.138 dB
Peak SAR (extrapolated) = 1.08 W/kg
SAR(1 g) = 0.763 mW/g; SAR(10 g) = 0.533 mW/g
Maximum value of SAR (measured) = 0.926 mW/g



0 dB = 0.926mW/g

Test Laboratory: HCT CO., LTD
EUT Type: Cellular/PCS GSM/WCDMA/LTE Phone with WLAN and Bluetooth
Liquid Temperature: 22.9 °C
Ambient Temperature: 23.1 °C
Test Date: Jan. 19, 2015
Plot No. 18

DUT: LG-H340f; Type: Bar;

Communication System: LTE Band 4; Frequency: 1732.5 MHz; Duty Cycle: 1:1
Medium parameters used (interpolated): $f = 1732.5$ MHz; $\sigma = 1.45$ mho/m; $\epsilon_r = 55.1$; $\rho = 1000$ kg/m³
Phantom section: Center Section ; Measurement SW: DASY4, V4.7 Build 80; Postprocessing SW: SEMCAD, V1.8 Build 186

DASY4 Configuration:

- Probe: EX3DV4 - SN3903; ConvF(8.02, 8.02, 8.02); Calibrated: 2014-08-28
- Sensor-Surface: 2mm (Mechanical Surface Detection)
- Electronics: DAE4 Sn652; Calibrated: 2014-03-26
- Phantom: Triple Flat Phantom 5.1C_20120905; Type: QD 000 P51 CA

LTE Band 4 Body Front QPSK 20MHz 1RB 0offset 20175ch/Area Scan (61x101x1): Measurement grid:

dx=15mm, dy=15mm

Maximum value of SAR (interpolated) = 1.17 mW/g

LTE Band 4 Body Front QPSK 20MHz 1RB 0offset 20175ch/Zoom Scan (5x5x7)/Cube 0: Measurement

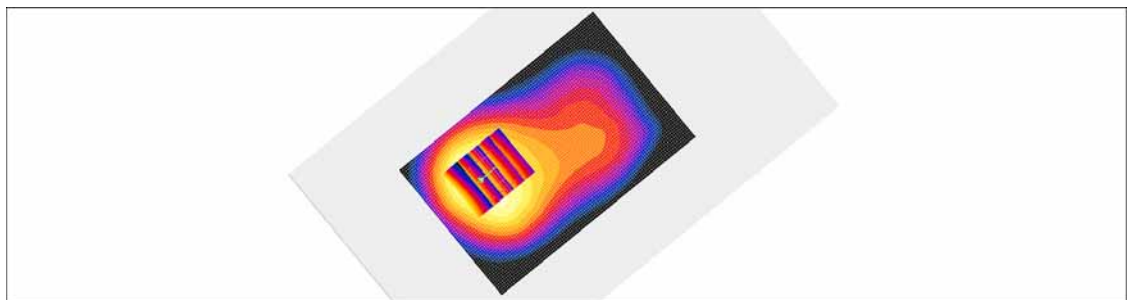
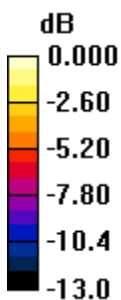
grid: dx=8mm, dy=8mm, dz=5mm

Reference Value = 17.1 V/m; Power Drift = -0.196 dB

Peak SAR (extrapolated) = 1.34 W/kg

SAR(1 g) = 0.932 mW/g; SAR(10 g) = 0.643 mW/g

Maximum value of SAR (measured) = 1.13 mW/g



0 dB = 1.13mW/g

Test Laboratory: HCT CO., LTD
EUT Type: Cellular/PCS GSM/WCDMA/LTE Phone with WLAN and Bluetooth
Liquid Temperature: 21.1 °C
Ambient Temperature: 21.3 °C
Test Date: Jan. 22, 2015
Plot No. 19

DUT: LG-H340f; Type: Bar;

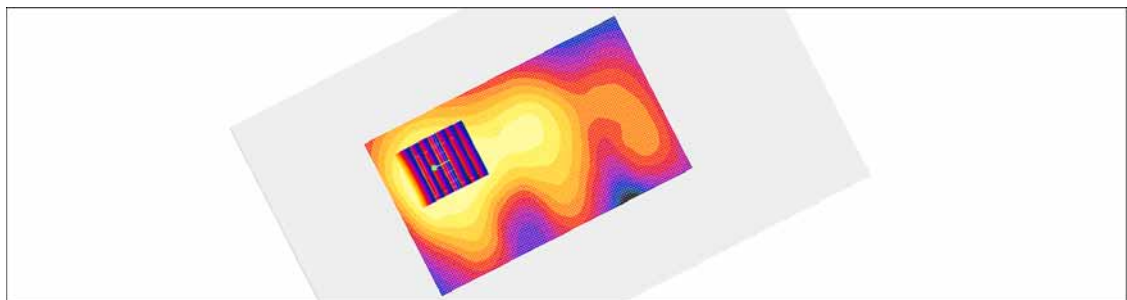
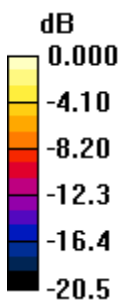
Communication System: LTE Band 7; Frequency: 2510 MHz; Duty Cycle: 1:1
Medium parameters used: $f = 2510$ MHz; $\sigma = 2.07$ mho/m; $\epsilon_r = 54.6$; $\rho = 1000$ kg/m³
Phantom section: Center Section ; Measurement SW: DASY4, V4.7 Build 80; Postprocessing SW: SEMCAD, V1.8 Build 186

DASY4 Configuration:

- Probe: EX3DV4 - SN3863; ConvF(6.87, 6.87, 6.87); Calibrated: 2014-07-24
- Sensor-Surface: 2mm (Mechanical Surface Detection)
- Electronics: DAE4 Sn1225; Calibrated: 2014-03-24
- Phantom: Triple Flat Phantom 5.1C_20120905; Type: QD 000 P51 CA

LTE7 Body Rear QPSK 20Mhz 1RB Offset 20850ch/Area Scan (71x121x1): Measurement grid: dx=12mm, dy=12mm
Maximum value of SAR (interpolated) = 0.930 mW/g

LTE7 Body Rear QPSK 20Mhz 1RB Offset 20850ch/Zoom Scan (7x7x7)/Cube 0: Measurement grid: dx=5mm, dy=5mm, dz=5mm
Reference Value = 13.4 V/m; Power Drift = 0.134 dB
Peak SAR (extrapolated) = 1.25 W/kg
SAR(1 g) = 0.629 mW/g; SAR(10 g) = 0.346 mW/g
Maximum value of SAR (measured) = 0.912 mW/g



0 dB = 0.912mW/g

Test Laboratory: HCT CO., LTD
EUT Type: Cellular/PCS GSM/WCDMA/LTE Phone with WLAN and Bluetooth
Liquid Temperature: 21.2 °C
Ambient Temperature: 21.4 °C
Test Date: Jan. 20, 2015
Plot No. 20

DUT: LG-H340f; Type: Bar;

Communication System: 2450MHz FCC; Frequency: 2412 MHz; Duty Cycle: 1:1
Medium parameters used (interpolated): $f = 2412$ MHz; $\sigma = 1.94$ mho/m; $\epsilon_r = 53$; $\rho = 1000$ kg/m³
Phantom section: Center Section ; Measurement SW: DASY4, V4.7 Build 80; Postprocessing SW: SEMCAD, V1.8 Build 186

DASY4 Configuration:

- Probe: EX3DV4 - SN3863; ConvF(6.97, 6.97, 6.97); Calibrated: 2014-07-24
- Sensor-Surface: 2mm (Mechanical Surface Detection)
- Electronics: DAE4 Sn1225; Calibrated: 2014-03-24
- Phantom: Triple Flat Phantom 5.1C_20120905; Type: QD 000 P51 CA

802.11b Body Rear 1ch 1Mbps/Area Scan (81x121x1): Measurement grid: dx=12mm, dy=12mm
Maximum value of SAR (interpolated) = 0.028 mW/g

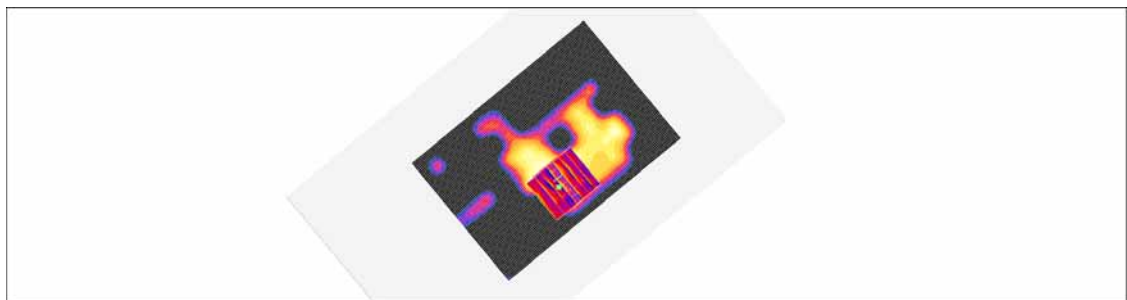
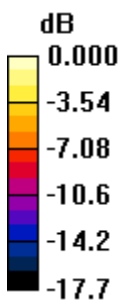
802.11b Body Rear 1ch 1Mbps/Zoom Scan (7x7x7)/Cube 0: Measurement grid: dx=5mm, dy=5mm, dz=5mm

Reference Value = 2.72 V/m; Power Drift = 0.174 dB

Peak SAR (extrapolated) = 0.030 W/kg

SAR(1 g) = 0.016 mW/g; SAR(10 g) = 0.00816 mW/g

Maximum value of SAR (measured) = 0.023 mW/g



0 dB = 0.023mW/g

Test Laboratory: HCT CO., LTD
EUT Type: Cellular/PCS GSM/WCDMA/LTE Phone with WLAN and Bluetooth
Liquid Temperature: 23.0 °C
Ambient Temperature: 23.2 °C
Test Date: Jan. 15, 2015
Plot No. 21

DUT: LG-H340f; Type: Bar;

Communication System: GSM 850; Frequency: 836.6 MHz; Duty Cycle: 1:8.3
Medium parameters used (interpolated): $f = 836.6$ MHz; $\sigma = 0.987$ mho/m; $\epsilon_r = 56.8$; $\rho = 1000$ kg/m³
Phantom section: Center Section ; Measurement SW: DASY4, V4.7 Build 80; Postprocessing SW: SEMCAD, V1.8 Build 186

DASY4 Configuration:

- Probe: EX3DV4 - SN3863; ConvF(9.43, 9.43, 9.43); Calibrated: 2014-07-24
- Sensor-Surface: 2mm (Mechanical Surface Detection)
- Electronics: DAE4 Sn1225; Calibrated: 2014-03-24
- Phantom: Triple Flat Phantom 5.1C_20120905; Type: QD 000 P51 CA

GSM850 Body Rear-worn 190ch/Area Scan (61x101x1): Measurement grid: dx=15mm, dy=15mm
Maximum value of SAR (interpolated) = 0.609 mW/g

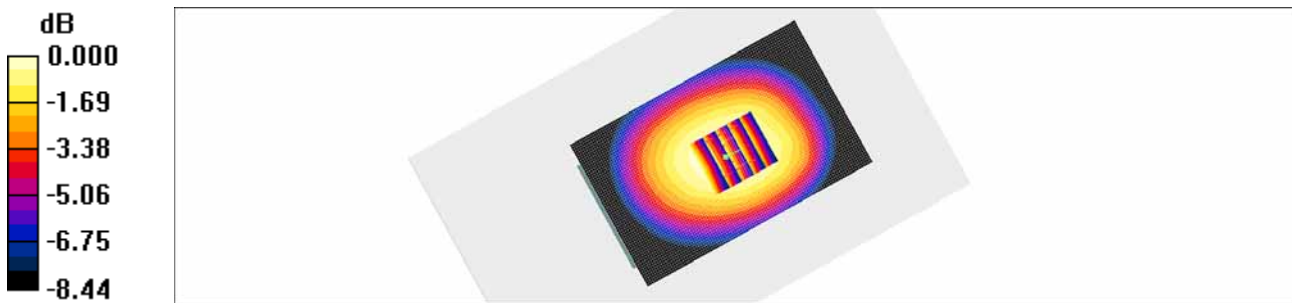
GSM850 Body Rear-worn 190ch/Zoom Scan (5x5x7)/Cube 0: Measurement grid: dx=8mm, dy=8mm, dz=5mm

Reference Value = 23.3 V/m; Power Drift = 0.110 dB

Peak SAR (extrapolated) = 0.672 W/kg

SAR(1 g) = 0.531 mW/g; SAR(10 g) = 0.403 mW/g

Maximum value of SAR (measured) = 0.611 mW/g



0 dB = 0.611mW/g

Test Laboratory: HCT CO., LTD
EUT Type: Cellular/PCS GSM/WCDMA/LTE Phone with WLAN and Bluetooth
Liquid Temperature: 22.9 °C
Ambient Temperature: 23.1 °C
Test Date: Jan. 16, 2015
Plot No. 22

DUT: LG-H340f; Type: Bar;

Communication System: GSM 1900; Frequency: 1880 MHz; Duty Cycle: 1:8.3
Medium parameters used: $f = 1880$ MHz; $\sigma = 1.53$ mho/m; $\epsilon_r = 54.1$; $\rho = 1000$ kg/m³
Phantom section: Center Section ; Measurement SW: DASY4, V4.7 Build 80; Postprocessing SW: SEMCAD, V1.8 Build 186

DASY4 Configuration:

- Probe: EX3DV4 - SN3863; ConvF(7.36, 7.36, 7.36); Calibrated: 2014-07-24
- Sensor-Surface: 2mm (Mechanical Surface Detection)
- Electronics: DAE4 Sn1225; Calibrated: 2014-03-24
- Phantom: Triple Flat Phantom 5.1C_20120905; Type: QD 000 P51 CA

GSM1900 Body Rear 661ch Body Worn/Area Scan (61x101x1): Measurement grid: dx=15mm, dy=15mm
Maximum value of SAR (interpolated) = 0.326 mW/g

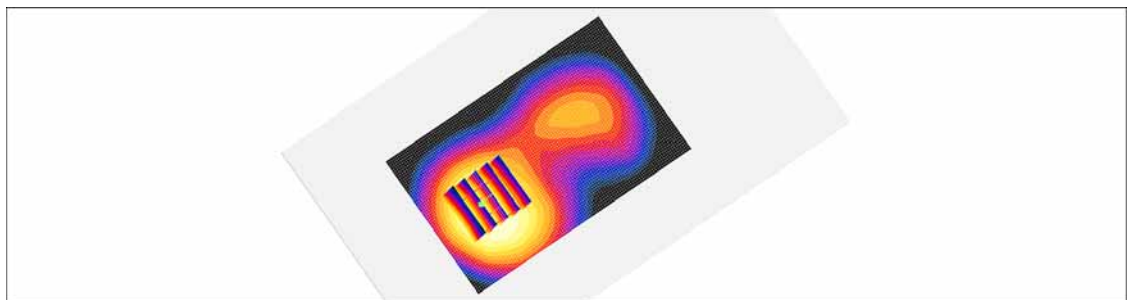
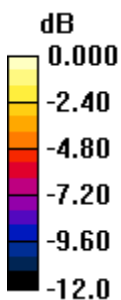
GSM1900 Body Rear 661ch Body Worn/Zoom Scan (5x5x7)/Cube 0: Measurement grid: dx=8mm, dy=8mm, dz=5mm

Reference Value = 8.80 V/m; Power Drift = 0.151 dB

Peak SAR (extrapolated) = 0.369 W/kg

SAR(1 g) = 0.261 mW/g; SAR(10 g) = 0.178 mW/g

Maximum value of SAR (measured) = 0.319 mW/g



0 dB = 0.319mW/g

Test Laboratory: HCT CO., LTD
EUT Type: Cellular/PCS GSM/WCDMA/LTE Phone with WLAN and Bluetooth
Liquid Temperature: 23.0 °C
Ambient Temperature: 23.2 °C
Test Date: Jan. 15, 2015
Plot No. 23

DUT: LG-H340f; Type: Bar;

Communication System: GSM 850; Frequency: 824.2 MHz; Duty Cycle: 1:2.075
Medium parameters used: $f = 825$ MHz; $\sigma = 0.979$ mho/m; $\epsilon_r = 56.9$; $\rho = 1000$ kg/m³
Phantom section: Center Section ; Measurement SW: DASY4, V4.7 Build 80; Postprocessing SW: SEMCAD, V1.8 Build 186

DASY4 Configuration:

- Probe: EX3DV4 - SN3863; ConvF(9.43, 9.43, 9.43); Calibrated: 2014-07-24
- Sensor-Surface: 2mm (Mechanical Surface Detection)
- Electronics: DAE4 Sn1225; Calibrated: 2014-03-24
- Phantom: Triple Flat Phantom 5.1C_20120905; Type: QD 000 P51 CA

GSM850 Body Rear 128ch GPRS 4TX/Area Scan (61x101x1): Measurement grid: dx=15mm, dy=15mm
Maximum value of SAR (interpolated) = 1.10 mW/g

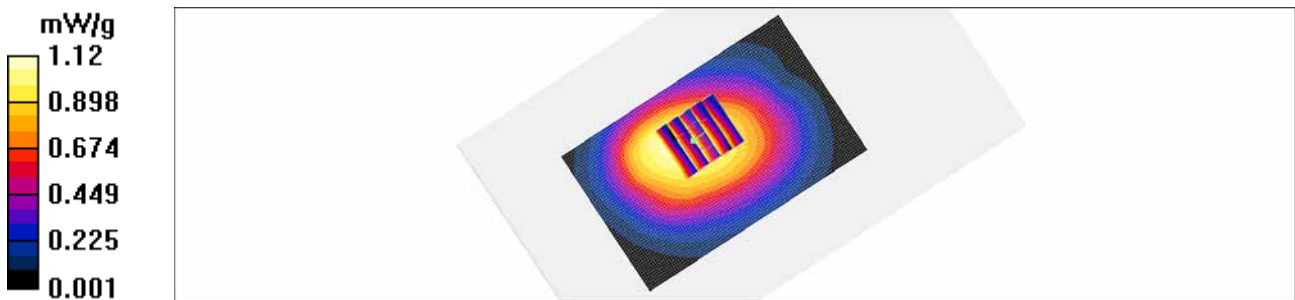
GSM850 Body Rear 128ch GPRS 4TX/Zoom Scan (5x5x7)/Cube 0: Measurement grid: dx=8mm, dy=8mm, dz=5mm

Reference Value = 29.8 V/m; Power Drift = 0.040 dB

Peak SAR (extrapolated) = 1.26 W/kg

SAR(1 g) = 0.980 mW/g; SAR(10 g) = 0.756 mW/g

Maximum value of SAR (measured) = 1.12 mW/g



Test Laboratory: HCT CO., LTD
EUT Type: Cellular/PCS GSM/WCDMA/LTE Phone with WLAN and Bluetooth
Liquid Temperature: 22.9 °C
Ambient Temperature: 23.1 °C
Test Date: Jan. 16, 2015
Plot No. 24

DUT: LG-H340f; Type: Bar;

Communication System: WCDMA1900; Frequency: 1880 MHz; Duty Cycle: 1:1
Medium parameters used: $f = 1880 \text{ MHz}$; $\sigma = 1.53 \text{ mho/m}$; $\epsilon_r = 54.1$; $\rho = 1000 \text{ kg/m}^3$
Phantom section: Center Section ; Measurement SW: DASY4, V4.7 Build 80; Postprocessing SW: SEMCAD, V1.8 Build 186

DASY4 Configuration:

- Probe: EX3DV4 - SN3863; ConvF(7.36, 7.36, 7.36); Calibrated: 2014-07-24
- Sensor-Surface: 2mm (Mechanical Surface Detection)
- Electronics: DAE4 Sn1225; Calibrated: 2014-03-24
- Phantom: Triple Flat Phantom 5.1C; Type: QD 000 P51 CA

WCDMA1900 Body Front 9400ch/Area Scan (61x101x1): Measurement grid: $dx=15\text{mm}$, $dy=15\text{mm}$
Maximum value of SAR (interpolated) = 1.45 mW/g

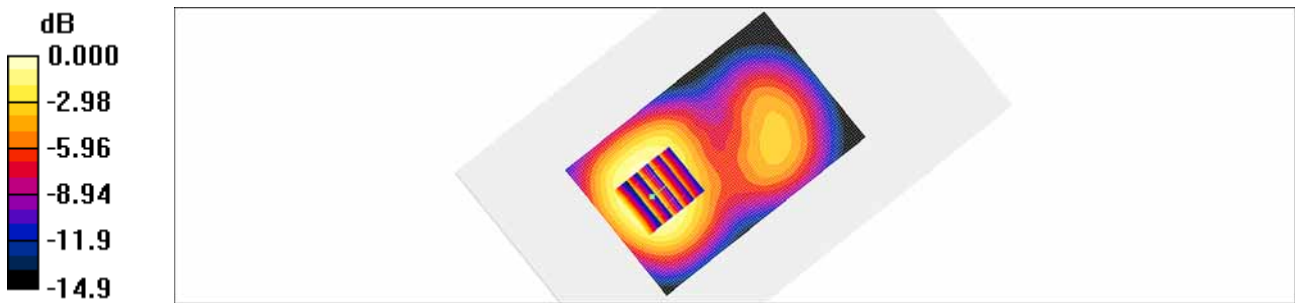
WCDMA1900 Body Front 9400ch/Zoom Scan (5x5x7)/Cube 0: Measurement grid: $dx=8\text{mm}$, $dy=8\text{mm}$, $dz=5\text{mm}$

Reference Value = 15.0 V/m; Power Drift = 0.024 dB

Peak SAR (extrapolated) = 1.69 W/kg

SAR(1 g) = 1.11 mW/g; SAR(10 g) = 0.715 mW/g

Maximum value of SAR (measured) = 1.42 mW/g



0 dB = 1.42mW/g

Test Laboratory: HCT CO., LTD
EUT Type: Cellular/PCS GSM/WCDMA/LTE Phone with WLAN and Bluetooth
Liquid Temperature: 22.9 °C
Ambient Temperature: 23.1 °C
Test Date: Jan. 19, 2015
Plot No. 25

DUT: LG-H340f; Type: Bar;

Communication System: LTE Band 4; Frequency: 1732.5 MHz; Duty Cycle: 1:1
Medium parameters used (interpolated): $f = 1732.5$ MHz; $\sigma = 1.45$ mho/m; $\epsilon_r = 55.1$; $\rho = 1000$ kg/m³
Phantom section: Center Section ; Measurement SW: DASY4, V4.7 Build 80; Postprocessing SW: SEMCAD, V1.8 Build 186

DASY4 Configuration:

- Probe: EX3DV4 - SN3903; ConvF(8.02, 8.02, 8.02); Calibrated: 2014-08-28
- Sensor-Surface: 2mm (Mechanical Surface Detection)
- Electronics: DAE4 Sn652; Calibrated: 2014-03-26
- Phantom: Triple Flat Phantom 5.1C_20120905; Type: QD 000 P51 CA

LTE Band 4 Body Front QPSK 20MHz 1RB 0offset 20175ch/Area Scan (61x101x1): Measurement grid:

dx=15mm, dy=15mm

Maximum value of SAR (interpolated) = 1.16 mW/g

LTE Band 4 Body Front QPSK 20MHz 1RB 0offset 20175ch/Zoom Scan (5x5x7)/Cube 0: Measurement

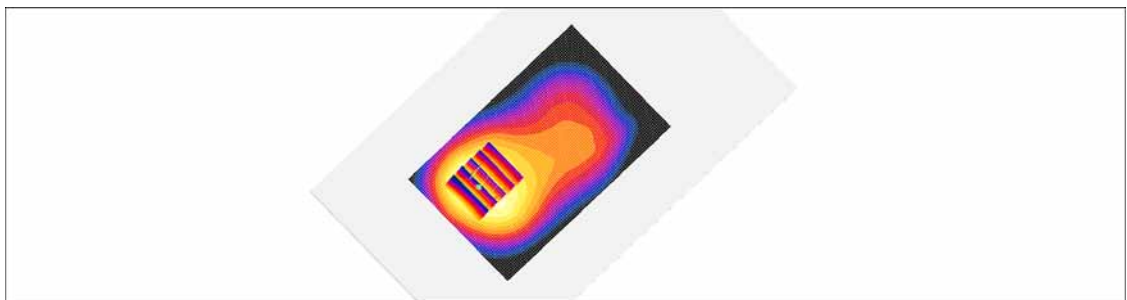
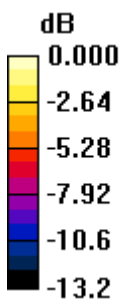
grid: dx=8mm, dy=8mm, dz=5mm

Reference Value = 16.5 V/m; Power Drift = 0.130 dB

Peak SAR (extrapolated) = 1.37 W/kg

SAR(1 g) = 0.919 mW/g; SAR(10 g) = 0.632 mW/g

Maximum value of SAR (measured) = 1.14 mW/g



0 dB = 1.14mW/g

Test Laboratory: HCT CO., LTD
EUT Type: Cellular/PCS GSM/WCDMA/LTE Phone with WLAN and Bluetooth
Liquid Temperature: 21.1 °C
Ambient Temperature: 21.3 °C
Test Date: Jan. 22, 2015
Plot No. 26

DUT: LG-H340f; Type: Bar;

Communication System: LTE Band 7; Frequency: 2510 MHz; Duty Cycle: 1:1
Medium parameters used: $f = 2510$ MHz; $\sigma = 1.93$ mho/m; $\epsilon_r = 38.9$; $\rho = 1000$ kg/m³
Phantom section: Right Section ; Measurement SW: DASY4, V4.7 Build 80; Postprocessing SW: SEMCAD, V1.8 Build 186

DASY4 Configuration:

- Probe: EX3DV4 - SN3863; ConvF(7.05, 7.05, 7.05); Calibrated: 2014-07-24
- Sensor-Surface: 2mm (Mechanical Surface Detection)
- Electronics: DAE4 Sn1225; Calibrated: 2014-03-24
- Phantom: 800/900 Phantom; Type: SAM

LTE7 Left Touch QPSK 20Mhz 1RB 0offset 20850ch/Area Scan (71x121x1): Measurement grid: dx=12mm, dy=12mm

Maximum value of SAR (interpolated) = 1.41 mW/g

LTE7 Left Touch QPSK 20Mhz 1RB 0offset 20850ch/Zoom Scan (7x7x7)/Cube 0: Measurement grid:

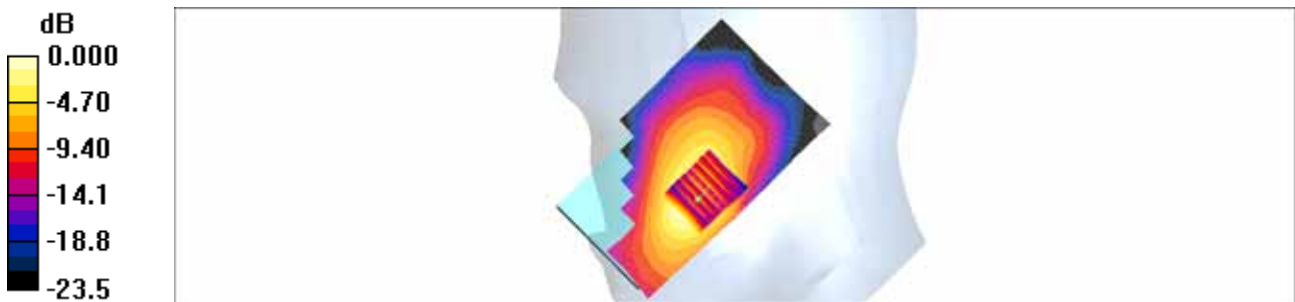
dx=5mm, dy=5mm, dz=5mm

Reference Value = 2.15 V/m; Power Drift = 0.15 dB

Peak SAR (extrapolated) = 1.78 W/kg

SAR(1 g) = 1.02 mW/g; SAR(10 g) = 0.559 mW/g

Maximum value of SAR (measured) = 1.40 mW/g



0 dB = 1.40mW/g