

# SAR TEST REPORT

Test item : Cellular/PCS GSM/GPRS/EDGE/WCDMA/HSDPA/HSUPA Phone  
with Bluetooth, WLAN and NFC  
Model No. : LG-E975k, E975K, LGE975K, E975k, LGE975k  
Order No. : DEMC1210-02190  
Date of receipt : 2012-10-16  
Test duration : 2012-11-05 ~ 2012-12-11  
Date of issue : 2012-12-11  
Use of report : FCC Original Grant

Applicant : LG Electronics MobileComm U.S.A., Inc.  
1000 Sylvan Avenue, Englewood Cliffs NJ 07632

Test laboratory : Digital EMC Co., Ltd.  
683-3, Yubang-Dong, Cheoin-Gu, Yongin-Si, Kyunggi-Do, 449-080, Korea

Test specification : §2.1093, FCC/OET Bulletin 65 Supplement C[July 2001]  
Test environment : See appended test report  
Test result :  Pass  Fail


The test results presented in this test report are limited only to the sample supplied by applicant and the use of this test report is inhibited other than its purpose. This test report shall not be reproduced except in full, without the written approval of DIGITAL EMC CO., LTD.

Tested by:



Engineer  
N.K.Lim

Witnessed by:



Engineer  
S.K. Ryu

Reviewed by:



Technical Director  
Harvey Sung

## Table of Contents

<b>1. INTROCUCTION .....</b>	<b>3</b>
<b>2. DESCRIPTION OF DEVICE.....</b>	<b>4</b>
2.1 TEST METHODOLOGY .....	5
<b>3. DESCRIPTION OF TEST EQUIPMENT .....</b>	<b>6</b>
3.1 SAR MEASUREMENT SETUP .....	6
3.2 EX3DV4 Probe Specification .....	7
3.3 Probe Calibration Process.....	8
3.3.1 E-Probe Calibration.....	8
3.4 Data Extrapolation .....	9
3.5 SAM Twin PHANTOM .....	10
3.6 Device Holder for Transmitters.....	10
3.7 Brain & Muscle Simulation Mixture Characterization .....	11
3.8 SAR TEST EQUIPMENT .....	12
<b>4. TEST SYSTEM SPECIFICATIONS.....</b>	<b>13</b>
<b>5. SAR MEASUREMENT PROCEDURE.....</b>	<b>14</b>
<b>6. DESCRIPTION OF TEST POSITION.....</b>	<b>15</b>
6.1 HEAD POSITION .....	15
6.2 Positioning for Cheek/Touch .....	16
6.3 Positioning for Ear / 15 ° Tilt.....	16
6.4 Body Holster /Belt Clip Configurations .....	17
<b>7. IEEE P1528 –MEASUREMENT UNCERTAINTIES.....</b>	<b>18</b>
<b>8. ANSI / IEEE C95.1-2005 RF EXPOSURE LIMITS .....</b>	<b>30</b>
<b>9. SYSTEM VERIFICATION.....</b>	<b>31</b>
9.1 Tissue Verification .....	31
9.2 Test System Validation .....	33
<b>10. Multiple TRANSMITTERS SAR CONSIDERATIONS.....</b>	<b>34</b>
10.1 SAR for Simultaneous Transmission.....	35
10.2 Description of Volume Scan .....	41
10.3 SAR Assessment.....	42
<b>11. Configuring 802.11 a/b/g Transmitters for SAR Measurement.....</b>	<b>43</b>
<b>12. SAR Measurement Conditions for UMTS.....</b>	<b>44</b>
<b>13. SAR CONSIDERATIONS.....</b>	<b>45</b>
13.1 SAR Test Configurations .....	45
13.2 Antenna Distance .....	45
<b>14. SAR TEST SUMMARY AND POWER TABLE .....</b>	<b>46</b>
<b>15. SAR TEST DATA RESULTS .....</b>	<b>51</b>
15.1 Measurement Results (GSM850 Head SAR) .....	51
15.2 Measurement Results (GSM850 GPRS Head SAR).....	52
15.3 Measurement Results (PCS1900 Head SAR) .....	53
15.4 Measurement Results (PCS1900 GPRS Head SAR).....	54
15.5 Measurement Results (WCDMA 850 Head SAR).....	55
15.6 Measurement Results (802.11b Head SAR).....	56
15.7 Measurement Results (802.11a - 5.8 G Band Head SAR) .....	57
15.8 Measurement Results (802.11a - 5.2 G Band Head SAR) .....	58
15.9 Measurement Results (802.11a - 5.3 G Band Head SAR) .....	59
15.10 Measurement Results (802.11a - 5.5 G Band Head SAR) .....	60
15.11 Measurement Results (GSM850 GPRS Hotspot Body SAR) .....	61
15.12 Measurement Results (PCS1900 GPRS Hotspot Body SAR).....	62
15.13 Measurement Results (WCDMA 850 Hotspot Body SAR).....	63
15.14 Measurement Results (802.11b Hotspot Body SAR).....	64
15.15 Measurement Results (802.11a - 5 G Band Body SAR).....	65
<b>16. Scaled SAR Values to the Maximum tune-up tolerances .....</b>	<b>66</b>
<b>17. CONCLUSION.....</b>	<b>67</b>
<b>18. REFERENCES .....</b>	<b>68</b>
<b>Attachment 1. – Probe Calibration Data .....</b>	<b>70</b>
<b>Attachment 2. – Dipole Calibration Data .....</b>	<b>93</b>

## 1. INTROCUCTION

The FCC has adopted the guidelines for evaluating the environmental effects of radio frequency radiation in ET Docket 93-62 on Aug. 6, 1996 to protect the public and workers from the potential hazards of RF emissions due to FCC-regulated portable devices. The safety limits used for the environmental evaluation measurements are based on the criteria published by the American National Standards Institute (ANSI) for localized specific absorption rate (SAR) in IEEE/ANSI C95\*.1-2005 Standard for Safety Levels with Respect to Human Exposure to Radio Frequency Electromagnetic Fields, 3 kHz to 300 GHz. 1992 by the Institute of Electrical and Electronics Engineers, Inc., New York, New York 10017. The measurement procedure described in IEEE/ANSI C95.3-1992 Recommended Practice for the Measurement of Potentially Hazardous Electromagnetic Fields - RF and Microwave is used for guidance in measuring SAR due to the RF radiation exposure from the Equipment Under Test (EUT). These criteria for SAR evaluation are similar to those recommended by the National Council on Radiation Protection and Measurements (NCRP) in Biological Effects and Exposure Criteria for Radio frequency Electromagnetic Fields," NCRP Report No. 86 NCRP, 1986, Bethesda, MD 20814. SAR is a measure of the rate of energy absorption due to exposure to an RF transmitting source. SAR values have been related to threshold levels for potential biological hazards.

### SAR Definition

Specific Absorption Rate (SAR) is defined as the time derivative (rate) of the incremental energy (dU) absorbed by (dissipated in) an incremental mass (dm) contained in a volume element (dV) of a given density ( $\rho$ ) It is also defined as the rate of RF energy absorption per unit mass at a point in an absorbing body (see Fig. 1.1)

$$SAR = \frac{d}{dt} \left( \frac{dU}{dm} \right) = \frac{d}{dt} \left( \frac{dU}{\rho dV} \right)$$

**Figure 1.1**  
**SAR Mathematical Equation**

SAR is expressed in units of Watts per Kilogram (W/kg).

$$SAR = \frac{\sigma \cdot E^2}{\rho}$$

Where:

- $\sigma$  = conductivity of the tissue-simulant material (S/m)
- $\rho$  = mass density of the tissue-simulant material (kg/m<sup>3</sup>)
- E = Total RMS electric field strength (V/m)

NOTE: The primary factors that control rate of energy absorption were found to be the wavelength of the incident field in relations to the dimensions and geometry of the irradiated organism, the orientation of the organism in relation to the polarity of field vectors, the presence of reflecting surfaces, and whether conductive contact is made by the organism with a ground plane.

## 2. DESCRIPTION OF DEVICE

Environmental evaluation measurements of specific absorption rate (SAR) distributions in emulated human head and body tissues exposed to radio frequency (RF) radiation from wireless portable devices for compliance with the rules and regulations of the U.S. Federal Communications Commission (FCC).

### General Information

Equipment type	Cellular/PCS GSM/GPRS/EDGE/WCDMA/HSDPA/HSUPA Phone with Bluetooth, WLAN and NFC				
FCC ID	ZNFE975K				
Equipment model name	LG-E975k				
Equipment add model name	E975K, LGE975K, E975k, LGE975k ※ Five models are same mechanical, electrical and functional. ※ The only difference is the model name, which are changed for marketing purpose.				
Equipment serial no.	Identical prototype				
Mode(s) of Operation	GSM850, PCS1900, WCDMA850, W-LAN(802.11a/b)				
TX Frequency Range	824.2 ~ 848.8 MHz(Cellular Band) / 826.4 ~ 846.6 MHz(WCDMA FDD V) 1850.2 ~ 1909.8 MHz(PCS Band) / 2412 ~ 2462 MHz(802.11b) 5180 ~ 5240 MHz(802.11a - 5.2 GHz Band) / 5260 ~ 5320 MHz(802.11a - 5.3 GHz Band) 5500 ~ 5700 MHz(802.11a - 5.5 GHz Band) / 5745 ~ 5825 MHz(802.11a - 5.8 GHz Band)				
RX Frequency Range	869.2 ~ 893.8 MHz(Cellular Band) / 871.4 ~ 891.6 MHz(WCDMA FDD V) 1930.2 ~ 1989.8 MHz(PCS Band) / 2412 ~ 2462 MHz(802.11b) 5180 ~ 5240 MHz(802.11a - 5.2 GHz Band) / 5260 ~ 5320 MHz(802.11a - 5.3 GHz Band) 5500 ~ 5700 MHz(802.11a - 5.5 GHz Band) / 5745 ~ 5825 MHz(802.11a - 5.8 GHz Band)				
Max. SAR Measurement	Band	1g SAR (W/kg)			
		Head	GPRS Head	Body - worn	Hotspot
	GSM850	0.195	0.261	0.572	0.572
	PCS1900	0.326	0.652	1.030	1.030
	WCDMA850	0.211	-	0.427	0.427
	2.4 G W-LAN(802.11b) 5 G W-LAN(802.11a)	0.241 0.096	- -	0.280 0.246	0.280 -
Simultaneous SAR per KDB 690783 D01		0.567	0.893	1.310	1.310
FCC Equipment Class	Licensed Portable Transmitter Held to Ear (PCE)				
Date(s) of Tests	2012-11-05 ~ 2012-12-11				
Antenna Type	Internal Type Antenna				
Functions	<ul style="list-style-type: none"> <li>● GSM/GPRS(GPRS Class: 12) / EDGE(EDGE Class: 12) supported * DTM not supported</li> <li>● BT(2.4GHz)/WLAN(2.4GHz, 5 GHz, 802.11a/b/g/n) supported * No simultaneous transmission between BT &amp; WLAN</li> <li>● Simultaneous transmission between GSM, WCDMA voice &amp; WLAN / GPRS, WCDMA &amp; WLAN</li> <li>● VoIP supported.</li> <li>● Mobile Hotspot supported.</li> <li>● When Hotspot is enabled, all 5 GHz bands are disabled.</li> </ul>				

## **2.1 TEST METHODOLOGY**

The tests documented in this report were performed in accordance with FCC OET Bulletin 65 Supplement C 01-01, IEEE Standard 1528-2003 & IEEE 1528a-2005 and the following published KDB procedures.

- 248227 D01 SAR Measurement Procedure for 802.11 a/b/g Transmitters v01r02
- 447498 D01 General RF Exposure Guidance v05
- 447498 D01 Mobile Portable RF Exposure V04
- 450824 D01 SAR Prob Cal and Ver meas v01r01
- 450824 D02 Dipole SAR Validation Verification v01r01
- 648474 D01 SAR Handsets Multi Xmitter and Ant, v01r05
- 865664 D01 SAR measurement 100 MHz to 6 GHz v01
- 865664 D02 SAR Reporting v01
- 941225 D01 SAR test for 3G devices v02
- 941225 D03 SAR Test Reduction GSM GPRS EDGE v01
- 941225 D06 Hotspot SAR v01
- 690783 D01 SAR Listings on Grants v01r02

### 3. DESCRIPTION OF TEST EQUIPMENT

#### 3.1 SAR MEASUREMENT SETUP

Measurements are performed using the DASY5 automated dosimetric assessment system. The DASY5 is made by Schmid & Partner Engineering AG (SPEAG) in Zurich, Switzerland and consists of high precision robotics system (Staubli), robot controller, desktop computer, near-field probe, probe alignment sensor, and the generic twin phantom containing the brain equivalent material. The robot is a six-axis industrial robot performing precise movements to position the probe to the location (points) of maximum electromagnetic field (EMF) (see Fig. 3.1).

A cell controller system contains the power supply, robot controller teach pendant (Joystick), and a remote control used to drive the robot motors. The PC consists of the Intel Core i7-2600 3.4GHz desktop computer with Windows NT system and SAR Measurement Software DASY5, A/D interface card, monitor, mouse, and keyboard. The Staubli Robot is connected to the cell controller to allow software manipulation of the robot. A data acquisition electronic (DAE) circuit that performs the signal amplification, signal multiplexing, AD-conversion, offset measurements, mechanical surface detection, collision detection, etc. is connected to the Electro-optical coupler (EOC). The EOC performs the conversion from the optical into digital electric signal of the DAE and transfers data to the PC plug-in card.

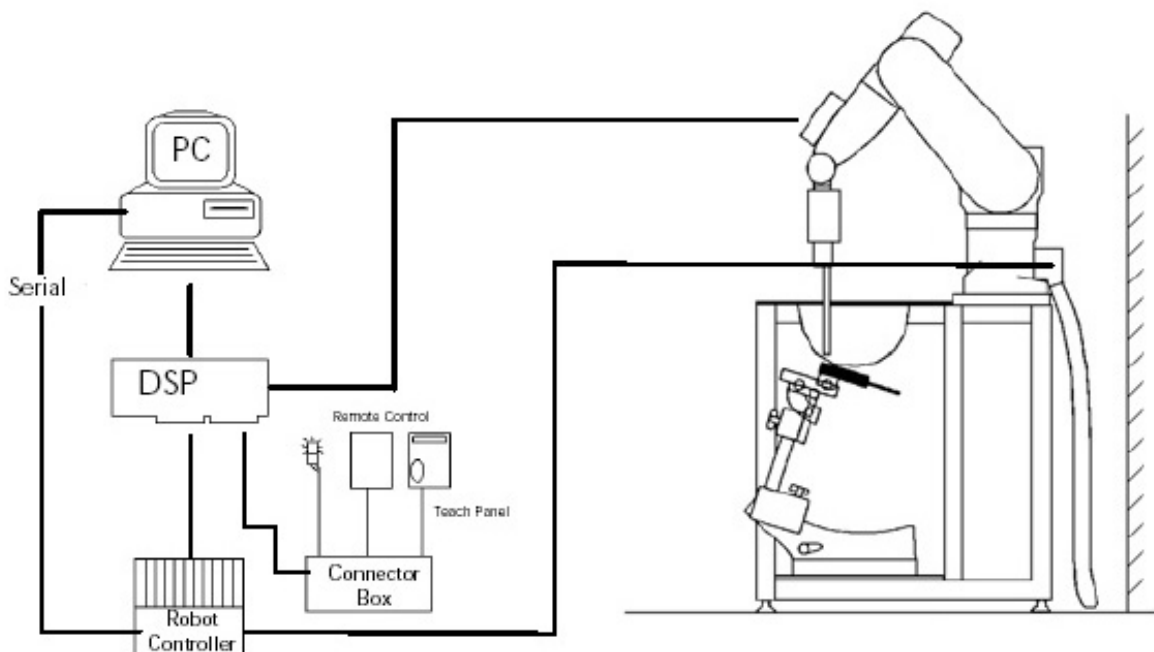


Figure 3.1 SAR Measurement System Setup

The DAE4 consists of a highly sensitive electrometer-grade preamplifier with auto-zeroing, a channel and gain-switching multiplexer, a fast 16 bit AD-converter and a command decoder and control logic unit. Transmission to the PC-card is accomplished through an optical downlink for data and status information and an optical uplink for commands and clock lines. The mechanical probe mounting device includes two different sensor systems for frontal and sidewise probe contacts. They are also used for mechanical surface detection and probe collision detection. The robot uses its own controller with a built in VME-bus computer. The system is described in detail.

### 3.2 EX3DV4 Probe Specification

<b>Calibration</b>	In air from 10 MHz to 6 GHz In brain and muscle simulating tissue at Frequencies of 450 MHz, 750 MHz, 835 MHz, 1750 MHz, 1900 MHz, 2300 MHz, 2450 MHz 2600 MHz, 3500 MHz, 5200 MHz, 5300 MHz, 5500 MHz, 5600 MHz, 5800 MHz	
<b>Frequency</b>	10 MHz to 6 GHz	
<b>Linearity</b>	$\pm 0.2$ dB(30 MHz to 6 GHz)	
<b>Dynamic</b>	5 $\mu$ W/g to > 100 mW/g	
<b>Range</b>	Linearity :	$\pm 0.2$ dB
<b>Dimensions</b>	Overall length :	330 mm
<b>Tip length</b>	20 mm	
<b>Body diameter</b>	12 mm	
<b>Tip diameter</b>	2.5 mm	
<b>Distance from probe tip to sensor center</b>	1.0 mm	
<b>Application</b>	SAR Dosimetry Testing Compliance tests of mobile phones	

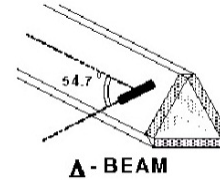


Figure 3.2 Triangular Probe Configurations



Figure 3.3 Probe Thick-Film Technique



DAE System

The SAR measurements were conducted with the dosimetric probe EX3DV4, designed in the classical triangular configuration (see Fig. 3.2) and optimized for dosimetric evaluation. The probe is constructed using the thick film technique; with printed resistive lines on ceramic substrates. The probe is equipped with an optical multi fiber line ending at the front of the probe tip (see Fig. 3.3). It is connected to the EOC box on the robot arm and provides an automatic detection of the phantom surface. Half of the fibers are connected to a pulsed infrared transmitter, the other half to a synchronized receiver. As the probe approaches the surface, the reflection from the surface produces a coupling from the transmitting to the receiving fibers. This reflection increases first during the approach, reaches maximum and then decreases. If the probe is flatly touching the surface, the coupling is zero. The distance of the coupling maximum to the surface is independent of the surface reflectivity and largely independent of the surface to probe angle. The DASY4 software reads the reflection during a software approach and looks for the maximum using a 2nd order fitting. The approach is stopped at reaching the maximum.

### 3.3 Probe Calibration Process

#### 3.3.1 E-Probe Calibration

##### Dosimetric Assessment Procedure

Each probe is calibrated according to a dosimetric assessment procedure with accuracy better than +/- 10%. The spherical isotropy was evaluated with the procedure and found to be better than +/-0.25dB. The sensitivity parameters (NormX, NormY, NormZ), the diode compression parameter (DCP) and the conversion factor (ConvF) of the probe is tested.

##### Free Space Assessment

The free space E-field from amplified probe outputs is determined in a test chamber. This is performed in a TEM cell for frequencies below 1 GHz, and in a waveguide above 1GHz for free space. For the free space calibration, the probe is placed in the volumetric center of the cavity at the proper orientation with the field. The probe is then rotated 360 degrees.

##### Temperature Assessment \*

E-field temperature correlation calibration is performed in a flat phantom filled with the appropriate simulated brain tissue. The measured free space E-field in the medium, correlates to temperature rise in a dielectric medium. For temperature correlation calibration a RF transparent the rmist or based temperature probe is used in conjunction with the E-field probe.

$$SAR = C \frac{\Delta T}{\Delta t}$$

where:

$\Delta t$  = exposure time (30 seconds),

C = heat capacity of tissue (brain or muscle),

$\Delta T$  = temperature increase due to RF exposure.

$$SAR = \frac{|E|^2 \cdot \sigma}{\rho}$$

where:

$\sigma$  = simulated tissue conductivity,

$\rho$  = Tissue density (1.25 g/cm<sup>3</sup> for brain tissue)

SAR is proportional to  $\Delta T / \Delta t$ , the initial rate of tissue heating, before thermal diffusion takes place. Now it's possible to quantify the electric field in the simulated tissue by equating the thermally derived SAR to the E- field;

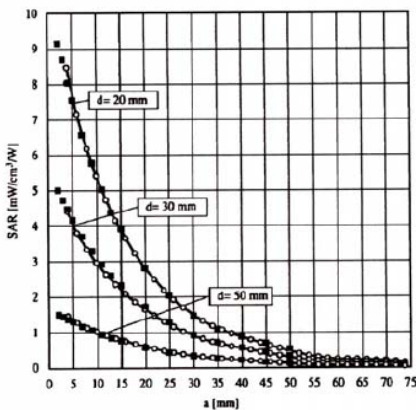


Figure 3.4E-Field and Temperature Measurements at 900MHz

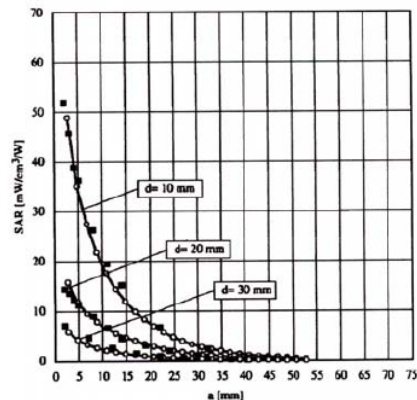


Figure 3.5 E-Field and Temperature Measurements at 1800MHz



### 3.4 Data Extrapolation

The DAS4 software automatically executes the following procedures to calculate the field units from the microvolt readings at the probe connector. The first step of the evaluation is a linearization of the filtered input signal to account for the compression characteristics of the detector diode. The compensation depends on the input signal, the diode type and the DC-transmission factor from the diode to the evaluation electronics. If the exciting field is pulsed, the crest factor of the signal must be known to correctly compensate for peak power. The formula for each channel can be given like below;

$$V_i = U_i + U_i^2 \cdot \frac{cf}{dcp_i}$$

with  $V_i$  = compensated signal of channel i (i=x,y,z)  
 $U_i$  = input signal of channel i (i=x,y,z)  
 $cf$  = crest factor of exciting field (DASY parameter)  
 $dcp_i$  = diode compression point (DASY parameter)

From the compensated input signals the primary field data for each channel can be evaluated:

E-field probes: with  $V_i$  = compensated signal of channel i (i = x,y,z)  
 $Norm_i$  = sensor sensitivity of channel i (i = x,y,z)  
 $\mu V/(V/m)^2$  for E-field probes  
 $ConvF$  = sensitivity of enhancement in solution  
 $E_i$  = electric field strength of channel i in V/m

$$E_i = \sqrt{\frac{V_i}{Norm_i \cdot ConvF}}$$

The RSS value of the field components gives the total field strength (Hermetian magnitude):

$$E_{tot} = \sqrt{E_x^2 + E_y^2 + E_z^2}$$

The primary field data are used to calculate the derived field units.

$$SAR = E_{tot}^2 \cdot \frac{\sigma}{\rho \cdot 1000}$$

with  $SAR$  = local specific absorption rate in W/g  
 $E_{tot}$  = total field strength in V/m  
 $\sigma$  = conductivity in [mho/m] or [Siemens/m]  
 $\rho$  = equivalent tissue density in g/cm<sup>3</sup>

The power flow density is calculated assuming the excitation field to be a free space field.

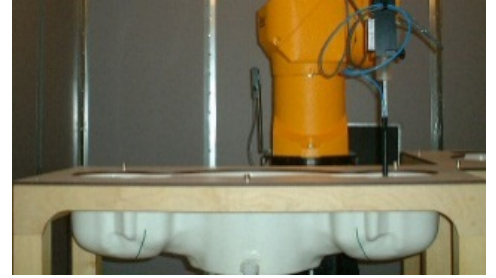
$$P_{free} = \frac{E_{tot}^2}{3770}$$

with  $P_{free}$  = equivalent power density of a plane wave in W/cm<sup>2</sup>  
 $E_{tot}$  = total electric field strength in V/m

### **3.5 SAM Twin PHANTOM**

The SAM Twin Phantom V4.0 is constructed of a fiberglass shell integrated in a wooden table. The shape of the shell is based on data from an anatomical study designed to determine the maximum exposure in at least 90% of all users. It enables the dosimetric evaluation of left and right hand phone usage as well as body mounted usage at the flat phantom region. A cover prevents the evaporation of the liquid.

Reference markings on the Phantom allow the complete setup of all predefined phantom positions and measurement grids by manually teaching three points in the robot. (see Fig. 3.6)



**Figure 3.6 SAM Twin Phantom**

### **SAM Twin Phantom Specification**

<b>Construction</b>	The shell corresponds to the specifications of the Specific Anthropomorphic Mannequin (SAM) phantom defined in IEEE 1528 and IEC 62209. It enables the dosimetric evaluation of left and right hand phone usage as well as body mounted usage at the flat phantom region. A cover prevents evaporation of the liquid. Reference markings on the phantom allow the complete setup of all predefined phantom positions and measurement grids by teaching three points with the robot. Twin SAM V5.0 has the same shell geometry and is manufactured from the same material as Twin SAM V4.0, but has reinforced top structure.
<b>Shell Thickness</b>	$2 \pm 0.2$ mm
<b>Filling Volume</b>	Approx. 25 liters
<b>Dimensions</b>	Length: 1000 mm Width: 500 mm Height: adjustable feet

### **3.6 Device Holder for Transmitters**

In combination with the Twin SAM Phantom V4.0/V4.0c or ELI4, the Mounting Device enables the rotation of the mounted transmitter device in spherical coordinates. Rotation point is the ear opening point. Transmitter devices can be easily and accurately positioned according to IEC, IEEE, FCC or other specifications. The device holder can be locked for positioning at different phantom sections (left head, right head, flat).

Note: A simulating human hand is not used due to the complex anatomical and geometrical structure of the hand that may produce infinite number of configurations. To produce the worst-case condition (the hand absorbs antenna output power), the hand is omitted during the tests.



**Figure 3.7 Mounting Device**

### 3.7 Brain & Muscle Simulation Mixture Characterization



The brain and muscle mixtures consist of a viscous gel using hydrox-ethyl cellulose (HEC) gelling agent and saline solution (see Table 3.1). Preservation with a bactericide is added and visual inspection is made to make sure air bubbles are not trapped during the mixing process. The mixture is calibrated to obtain proper dielectric constant (permittivity) and conductivity of the desired tissue. The mixture characterizations used for the brain and muscle tissue simulating liquids are according to the data by C. Gabriel and G. Harts grove.

Figure 3.8 SimulatedTissue

Table3.1 Composition of the Tissue Equivalent Matter

INGREDIENTS	SIMULATING TISSUE								
	835 MHz Brain	835 MHz Muscle	1900 MHz Brain	1900 MHz Muscle	2450 MHz Brain	2450 MHz Muscle	5200 ~ 5800 MHz Brain	5200 ~ 5800 MHz Muscle	
Mixture Percentage									
WATER	40.19	50.75	55.24	70.23	71.88	73.40	65.52	80.00	
DGBE	-	-	44.45	29.48	7.990	26.54	-	-	
SUGAR	57.90	48.21	-	-	-	-	-	-	
SALT	1.480	0.940	0.310	0.290	0.160	0.060	-	-	
BACTERICIDE	0.180	0.100	-	-	-	-	-	-	
HEC	0.250	-	-	-	-	-	-	-	
Triton X-100	-	-	-	-	19.97	-	17.24	-	
Diethyenglycol monohexylether	-	-	-	-	-	-	17.24	-	
Polysorbate(Tween) 80	-	-	-	-	-	-	-	20.00	
Dielectric Constant	Target	<b>41.5</b>	<b>55.2</b>	<b>40.0</b>	<b>53.3</b>	<b>39.2</b>	<b>52.7</b>	-	-
Conductivity (S/m)	Target	<b>0.90</b>	<b>0.97</b>	<b>1.40</b>	<b>1.52</b>	<b>1.80</b>	<b>1.95</b>	-	-

Salt: 99 % Pure Sodium Chloride Sugar: 98 % Pure Sucrose

Water: De-ionized, 16M resistivity HEC: Hydroxyethyl Cellulose

DGBE: 99 % Di(ethylene glycol) butyl ether,[2-(2-butoxyethoxy) ethanol]

Triton X-100(ultra pure): Polyethylene glycol mono[4-(1,1,3,3-tetramethylbutyl)phenyl]

Note: Please refer to the target of 5 GHz dielectric constant and conductivity on 30 pages of this report.

### 3.8 SAR TEST EQUIPMENT

Table 3.2 Test Equipment Calibration

	Type	Manufacturer	Model	Cal.Date	Next.Cal.Date	S/N
<input checked="" type="checkbox"/>	SEMITEC Engineering	SEMITEC	N/A	N/A	N/A	Shield Room
<input checked="" type="checkbox"/>	Robot	SCHMID	TX60L	N/A	N/A	F12/5LP5A1/A/01
<input checked="" type="checkbox"/>	Robot Controller	SCHMID	C58C	N/A	N/A	F12/5LP5A1/C/01
<input checked="" type="checkbox"/>	Joystick	SCHMID	N/A	N/A	N/A	S-12030401
<input checked="" type="checkbox"/>	Intel Core i7-2600 3.40 GHz Windows 7 Professional	N/A	N/A	N/A	N/A	N/A
<input checked="" type="checkbox"/>	Probe Alignment Unit LB	N/A	N/A	N/A	N/A	SE UKS 030 AA
<input checked="" type="checkbox"/>	Mounting Device	SCHMID	SD000H01HA	N/A	N/A	N/A
<input type="checkbox"/>	Sam Phantom	SCHMID	TP1223	N/A	N/A	N/A
<input type="checkbox"/>	Sam Phantom	SCHMID	TP1224	N/A	N/A	N/A
<input checked="" type="checkbox"/>	Twin SAM Phantom	SCHMID	QD000P40CD	N/A	N/A	1679
<input checked="" type="checkbox"/>	Head/Body Equivalent Matter(835MHz)	N/A	N/A	2012-01-01	2013-01-01	N/A
<input checked="" type="checkbox"/>	Head/Body Equivalent Matter(1900MHz)	N/A	N/A	2012-01-01	2013-01-01	N/A
<input checked="" type="checkbox"/>	Head/Body Equivalent Matter(2450MHz)	N/A	N/A	2012-01-01	2013-01-01	N/A
<input checked="" type="checkbox"/>	Head/Body Equivalent Matter(5000MHz)	N/A	N/A	2012-01-01	2013-01-01	N/A
<input checked="" type="checkbox"/>	Data Acquisition Electronics	SCHMID	DAE4V1	2012-04-23	2013-04-23	1335
<input checked="" type="checkbox"/>	Dosimetric E-Field Probe	SCHMID	EX3DV4	2012-06-20	2013-06-20	3866
<input checked="" type="checkbox"/>	Dosimetric E-Field Probe	SCHMID	EX3DV4	2012-01-27	2013-01-27	3643
<input type="checkbox"/>	Dummy Probe	N/A	N/A	N/A	N/A	N/A
<input checked="" type="checkbox"/>	835MHz System Validation Dipole	SCHMID	D835V2	2012-03-14	2014-03-14	464
<input checked="" type="checkbox"/>	1900MHz System Validation Dipole	SCHMID	D1900V2	2012-03-16	2014-03-16	5d029
<input checked="" type="checkbox"/>	2450MHz System Validation Dipole	SCHMID	D2450V2	2012-03-15	2014-03-15	726
<input checked="" type="checkbox"/>	5000MHz System Validation Dipole	SCHMID	D5GHzV2	2012-01-20	2014-01-20	1103
<input checked="" type="checkbox"/>	Network Analyzer	Agilent	E5071C	2012-11-02	2013-11-02	MY46106970
<input checked="" type="checkbox"/>	Signal Generator	Rohde Schwarz	SMR20	2012-03-05	2013-03-05	101251
<input checked="" type="checkbox"/>	Amplifier	EMPOWER	BBS3Q7ELU	2012-09-18	2013-09-18	1020
<input checked="" type="checkbox"/>	High Power RF Amplifier	EMPOWER	BBS3Q8CCJ	2012-11-02	2013-11-02	1005
<input checked="" type="checkbox"/>	Power Meter	HP	EPM-442A	2012-03-05	2013-03-05	GB37170267
<input checked="" type="checkbox"/>	Power Sensor	HP	8481A	2012-03-05	2013-03-05	3318A96566
<input checked="" type="checkbox"/>	Power Sensor	HP	8481A	2012-02-27	2013-02-27	3318A96030
<input checked="" type="checkbox"/>	Dual Directional Coupler	Agilent	778D-012	2012-01-09	2013-01-09	50228
<input checked="" type="checkbox"/>	Directional Coupler	HP	773D	2012-07-01	2013-07-01	2389A00640
<input checked="" type="checkbox"/>	Low Pass Filter 1,5 GHz	Micro LAB	LA-15N	2012-01-09	2013-01-09	N/A
<input checked="" type="checkbox"/>	Low Pass Filter 3,0 GHz	Micro LAB	LA-30N	2012-09-17	2013-09-17	N/A
<input checked="" type="checkbox"/>	Attenuators(3 dB)	Agilent	8491B	2012-07-02	2013-07-02	MY39260700
<input checked="" type="checkbox"/>	Attenuators(10 dB)	WEINSCHTEL	23-10-34	2012-01-09	2013-01-09	BP4387
<input type="checkbox"/>	Step Attenuator	HP	8494A	2012-09-17	2013-09-17	3308A33341
<input checked="" type="checkbox"/>	Dielectric Probe kit	Agilent	85070D	N/A	N/A	US01440118
<input checked="" type="checkbox"/>	8960 Series 10 Wireless Comms. Test Set	Agilent	E5515C	2012-03-05	2013-03-05	GB43461134

**NOTE:** The E-field probe was calibrated by SPEAG, by temperature measurement procedure. Dipole Validation measurement is performed by Digital EMC before each test. The brain and muscle simulating material are calibrated by Digital EMC using the dielectric probe system and network analyzer to determine the conductivity and permittivity (dielectric constant) of the brain-equivalent material.

## 4. TEST SYSTEM SPECIFICATIONS

---

### Automated TEST SYSTEM SPECIFICATIONS

#### Positioner

<b>Robot</b>	Stäubli Unimation Corp. Robot Model: TX60L
<b>Repeatability</b>	0.02 mm
<b>No. of axis</b>	6

#### Data Acquisition Electronic (DAE) System

##### Cell Controller

<b>Processor</b>	Intel Core i7-2600
<b>Clock Speed</b>	3.40 GHz
<b>Operating System</b>	Windows 7 Professional
<b>Data Card</b>	DASY5 PC-Board

##### Data Converter

<b>Features</b>	Signal, multiplexer, A/D converter. & control logic
<b>Software</b>	DASY5
<b>Connecting Lines</b>	Optical downlink for data and status info Optical uplink for commands and clock

##### PC Interface Card

<b>Function</b>	24 bit (64 MHz) DSP for real time processing Link to DAE 4 16 bit A/D converter for surface detection system serial link to robot direct emergency stop output for robot
-----------------	--

##### E-Field Probes

<b>Model</b>	EX3DV4 S/N: 3643, S/N: 3866
<b>Construction</b>	Triangular core fiber optic detection system
<b>Frequency</b>	10 MHz to 6 GHz
<b>Linearity</b>	$\pm 0.2$ dB (30 MHz to 6 GHz)

##### Phantom

<b>Phantom</b>	SAM Twin Phantom (V4.0)
<b>Shell Material</b>	Composite
<b>Thickness</b>	$2.0 \pm 0.2$ mm



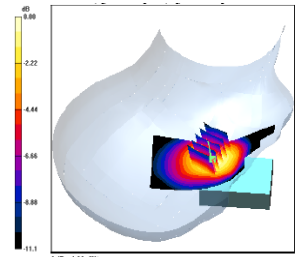
Figure 2.2 DASY5 Test System



## 5. SAR MEASUREMENT PROCEDURE

The evaluation was performed using the following procedure:

1. The SAR measurement was taken at a selected spatial reference point to monitor power variations during testing. This fixed location point was measured and used as a reference value.
2. The SAR distribution at the exposed side of the head was measured at a distance of 3.9mm from the Inner surface of the shell. The area covered the entire dimension of the head and the horizontal grid spacing was 15 mm x 15 mm.
3. Based on the area scan data, the area of the maximum absorption was determined by sp line interpolation. Around this point, a volume of 32 mm x 32 mm x 30 mm (fine resolution volume scan, zoom scan) was assessed by measuring 5 x 5 x 7 points. On this basis of this data set, the spatial peak SAR value was evaluated with the following procedure (see Sample SAR Area Scan):
  - a. The data at the surface was extrapolated, since the center of the dipoles is 2.5 mm away from the tip of the probe and the distance between the surface and the lowest measuring point is 1.2mm. The extrapolation was based on a least square algorithm. A polynomial of the fourth order was calculated through the points in z-axis. This polynomial was then used to evaluate the points between the surface and the probe tip.
  - b. The maximum interpolated value was searched with a straight-forward algorithm. Around this maximum the SAR values averaged over the spatial volumes (1g or 10g) were computed using the 3D-Spline interpolation algorithm. The 3D-spline is composed of three one-dimensional sp lines with the "Not a knot" condition (in x, y, and z directions). The volume was integrated with the trapezoidal algorithm. One thousand points (10 x 10x 10) were interpolated to calculate the average.
  - c. All neighboring volumes were evaluated until no neighboring volume with a higher average value was found.
4. The SAR reference value, at the same location as procedure #1, was re-measured. If the value changed by more than 5%, the evaluation is repeated.



Sample SAR Area Scan

### 5 GHz SAR Measurements

1. For 5 GHz testing, finer resolution Area scans were performed as specified by FCC SAR Measurement Requirements for 3 - 6 GHz, KDB pub 865664. The 5 GHz Area Scan requires a minimum resolution of 10 mm on the x and y axis for each grid measurement point.
2. For 5 GHz testing, finer resolution zoom scans were performed as specified by FCC SAR Measurement Requirements for 3 - 6 GHz, KDB pub 865664. The 5 GHz zoom scan requires a minimum volume of 24 mm X 24 mm X 20 mm and 7 X 7 X 11 points.

### Specific Anthropomorphic Mannequin (SAM) Specifications

The phantom for handset SAR assessment testing is a low-loss dielectric shell, with shape and dimensions derived from the anthropometric data of the 90th percentile adult male head dimensions as tabulated by the US Army. The SAM Twin Phantom shell is bisected along the mid-sagittal plane into right and left halves (see Fig. 5.1). The perimeter side walls of each phantom halves are extended to allow filling with liquid to a depth that is sufficient to minimized reflections from the upper surface. The liquid depth is maintained at a minimum depth of 15cm to minimize reflections from the upper surface.



Figure 5.1 Sam Twin Phantom shell

## 6. DESCRIPTION OF TEST POSITION

### 6.1 HEAD POSITION

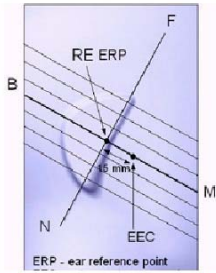


Figure 6.2 Close-up side view of ERPs

Figure 6.1 shows the front, back and side views of the SAM Twin Phantom. The point “M” is the reference point for the center of the mouth, “LE” is the left ear reference point(ERP), and “RE” is the right ERP. The ERPs are 15mm posterior to the entrance to the Ear canal (EEC) along the B-M line (Back-Mouth), as shown in Figure 6.5. The plane Passing, through the two ear canals and M is defined as the Reference Plane. The line N-F (Neck- Front) is perpendicular to the reference plane and passing through the RE (or LE) is called the Reference Pivoting Line (see Figure 6.2). Line B-M is perpendicular to the N-F line. Both N-F and B-M lines are marked on the external phantom shell to facilitate hand set positioning.



Figure 6.1 Front, back and side view SAM Twin Phantom

#### Handset Reference Points

Two imaginary lines on the handset were established: the vertical centerline and the horizontal line. The test device was placed in a normal operating position with the “test device reference point” located along the “vertical centerline” on the front of the device aligned to the “ear reference point” (See Fig. 6.3). The “test device reference point” was then located at the same level as the center of the ear reference point. The test device was positioned so that the “vertical centerline” was bisecting the front surface of the handset at it’s top and bottom edges, positioning the “ear reference point” on the outer surface of the both the left and right head phantoms on the ear reference point.

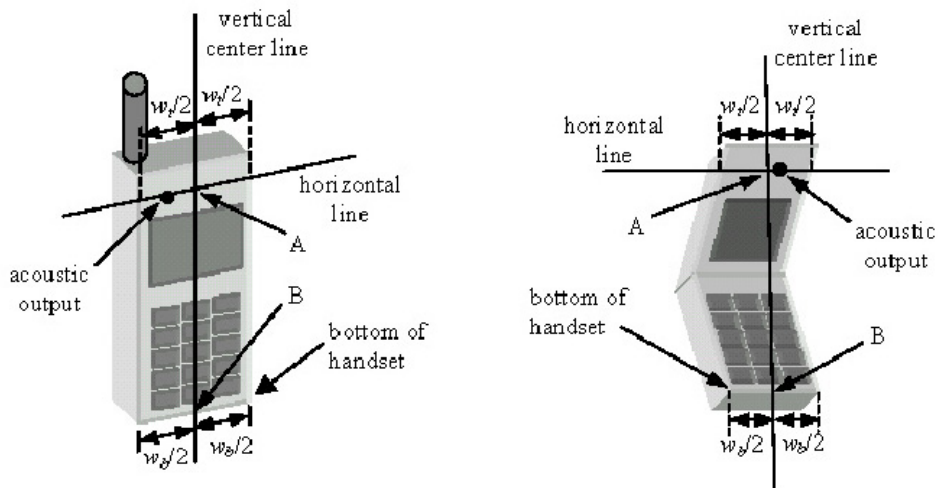
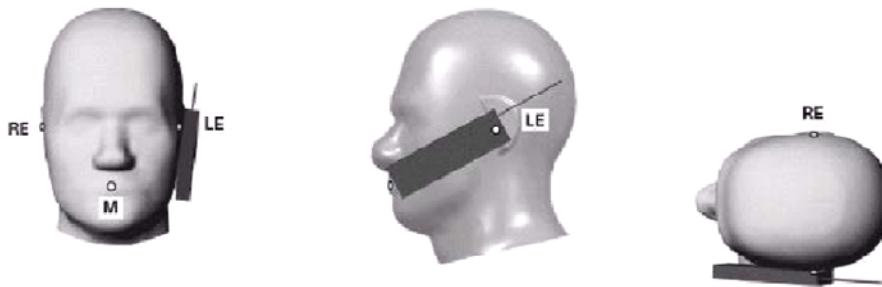


Figure 6.3 Handset Vertical Center & Horizontal Line Reference Points

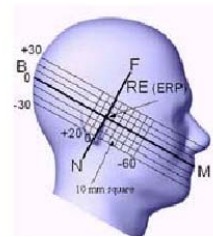
**6.2 Positioning for Cheek/Touch**

1. The test device was positioned with the handset close to the surface of the phantom such that point A is on the (virtual) extension of the line passing through points RE and LE on the phantom (see Figure 6.4), such that the plane defined by the vertical center line and the horizontal line of the phone is approximately parallel to the sagittal plane of the phantom.



**Figure 6.4 Front, Side and Top View of Cheek/Touch Position**

2. The handset was translated towards the phantom along the line passing through RE & LE until the handset touches the ear.
3. While maintaining the handset in this plane, the handset was rotated around the LE-RE line until the vertical centerline was in the plane normal to MB-NF including the line MB (reference plane).
4. The phone was then rotated around the vertical centerline until the phone (horizontal line) was symmetrical with respect to the line NF.
5. While maintaining the vertical centerline in the reference plane, keeping point A on the line passing through RE and LE, and maintaining the phone contact with the ear, the handset was rotated about the line NF until any point on the handset made contact with a phantom point below the ear (cheek). (See Figure 6.5)

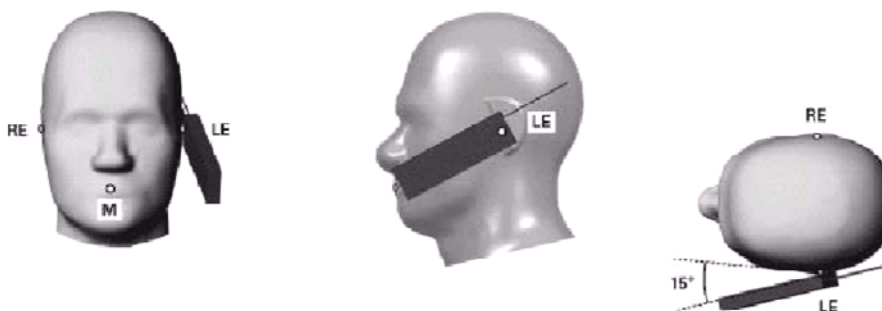


**Figure 6.5 Side view w/relevant markings**

**6.3 Positioning for Ear / 15 ° Tilt**

With the test device aligned in the “Cheek/Touch Position”:

1. While maintaining the orientation of the phone, the phone was retracted parallel to the reference plane far enough to enable a rotation of the phone by 15 degree.
2. The phone was then rotated around the horizontal line by 15 degree.
3. While maintaining the orientation of the phone, the phone was moved parallel to the reference plane until any part of the phone touches the head. (In this position, point A was located on the line RE-LE). The tilted position is obtained when the contact is on the pinna. If the contact was at any location other than the pinna, the angle of the phone would then be reduced. The tilted position was obtained when any part of the phone was in contact of the ear as well as a second part of the phone was in contact with the head (see Figure 6.6).



**Figure 6.6 Front, Side and Top View of Ear/15° Position**



## **6.4 Body Holster /Belt Clip Configurations**

Body-worn operating configurations are tested with the belt-clips and holsters attached to the device and positioned against a flat phantom in a normal use configuration (see Figure 6.8). A device with a headset output is tested with a headset connected to the device. Body dielectric parameters are used.

Accessories for Body-worn operation configurations are divided into two categories: those that do not contain metallic components and those that do contain metallic components. When multiple accessories that do not contain metallic components are supplied with the device, the device is tested with only the accessory that dictates the closest spacing to the body. Then multiple accessories that contain metallic components are supplied with the device, the device is tested with each accessory that contains a unique metallic component. If multiple accessories share an identical metallic component(i.e. the same metallic belt-clip used with different holsters with no other metallic components) only the accessory that dictates the closest spacing to the body is tested.



**Figure 6.8 Body Belt Clip & Holster Configurations**

Body-worn accessories may not always be supplied or available as options for some.

Devices intended to be authorized for body-worn use. In this case, a test configuration where a separation distances between the back of the device and the flat phantom is used. All test position spacing is documented.

Transmitters that are designed to operate in front of a person's face, as in push-to-talk configurations, are tested for SAR compliance with the front of the device positioned to face the flat phantom.

For devices that are carried next to the body such as a shoulder, waist or chest-worn transmitters, SAR compliance is tested with the accessory (ies), including headsets and microphones, attached to the device and positioned against a flat phantom in a normal use configuration.

In all cases SAR measurements are performed to investigate the worst-case positioning. Worst-case positioning is then documented and used to perform Body SAR testing. In order for users to be aware of the body-worn operating requirements for meeting RF exposure compliance, operating instructions and cautions statements are included in the user's manual.

## 7. IEEE P1528 –MEASUREMENT UNCERTAINTIES

### 835 MHz Head

Error Description	Uncertain value ±%	Probability Distribution	Divisor	(Ci) 1g	Standard (1g)	vi 2 or Veff
<b>Measurement System</b>						
Probe calibration	± 6.0	Normal	1	1	± 6.0 %	∞
Axial isotropy	± 4.7	Rectangular	√3	1	± 2.714 %	∞
Hemispherical isotropy	± 9.6	Rectangular	√3	1	± 5.543 %	∞
Boundary Effects	± 0.8	Rectangular	√3	1	± 0.462 %	∞
Probe Linearity	± 4.7	Rectangular	√3	1	± 2.714 %	∞
Detection limits	± 0.25	Rectangular	√3	1	± 0.144 %	∞
Readout Electronics	± 1.0	Normal	1	1	± 1.0 %	∞
Response time	± 0.8	Rectangular	√3	1	± 0.462 %	∞
Integration time	± 2.6	Rectangular	√3	1	± 1.501 %	∞
RF Ambient Conditions	± 3.0	Rectangular	√3	1	± 1.732 %	∞
Probe Positioner	± 0.4	Rectangular	√3	1	± 0.231 %	∞
Probe Positioning	± 2.9	Rectangular	√3	1	± 1.674 %	∞
Algorithms for Max. SAR Eval.	± 1.0	Rectangular	√3	1	± 0.577 %	∞
<b>Test Sample Related</b>						
Device Positioning	± 2.9	Normal	1	1	± 2.9 %	145
Device Holder	± 3.6	Normal	1	1	± 3.6 %	5
Power Drift	± 5.0	Rectangular	√3	1	± 2.887 %	∞
<b>Physical Parameters</b>						
Phantom Shell	± 4.0	Rectangular	√3	1	± 2.309 %	∞
Liquid conductivity (Target)	± 5.0	Rectangular	√3	0.64	± 2.887 %	∞
Liquid conductivity (Meas.)	± 3.9	Normal	1	0.64	± 3.9 %	∞
Liquid permittivity (Target)	± 5.0	Rectangular	√3	0.6	± 2.887 %	∞
Liquid permittivity (Meas.)	± 4.0	Normal	1	0.6	± 4.0 %	∞
<b>Combined Standard Uncertainty</b>					<b>± 12.0 %</b>	330
<b>Expanded Uncertainty (k=2)</b>					<b>± 24.1 %</b>	

The above measurement uncertainties are according to IEEE P1528 (2003)

**835 MHz Body**

Error Description	Uncertain value $\pm\%$	Probability Distribution	Divisor	(Ci) 1g	Standard (1g)	vi 2 or Veff
<b>Measurement System</b>						
Probe calibration	$\pm 6.0$	Normal	1	1	$\pm 6.0 \%$	$\infty$
Axial isotropy	$\pm 4.7$	Rectangular	$\sqrt{3}$	1	$\pm 2.714 \%$	$\infty$
Hemispherical isotropy	$\pm 9.6$	Rectangular	$\sqrt{3}$	1	$\pm 5.543 \%$	$\infty$
Boundary Effects	$\pm 0.8$	Rectangular	$\sqrt{3}$	1	$\pm 0.462 \%$	$\infty$
Probe Linearity	$\pm 4.7$	Rectangular	$\sqrt{3}$	1	$\pm 2.714 \%$	$\infty$
Detection limits	$\pm 0.25$	Rectangular	$\sqrt{3}$	1	$\pm 0.144 \%$	$\infty$
Readout Electronics	$\pm 1.0$	Normal	1	1	$\pm 1.0 \%$	$\infty$
Response time	$\pm 0.8$	Rectangular	$\sqrt{3}$	1	$\pm 0.462 \%$	$\infty$
Integration time	$\pm 2.6$	Rectangular	$\sqrt{3}$	1	$\pm 1.501 \%$	$\infty$
RF Ambient Conditions	$\pm 3.0$	Rectangular	$\sqrt{3}$	1	$\pm 1.732 \%$	$\infty$
Probe Positioner	$\pm 0.4$	Rectangular	$\sqrt{3}$	1	$\pm 0.231 \%$	$\infty$
Probe Positioning	$\pm 2.9$	Rectangular	$\sqrt{3}$	1	$\pm 1.674 \%$	$\infty$
Algorithms for Max. SAR Eval.	$\pm 1.0$	Rectangular	$\sqrt{3}$	1	$\pm 0.577 \%$	$\infty$
<b>Test Sample Related</b>						
Device Positioning	$\pm 2.9$	Normal	1	1	$\pm 2.9 \%$	145
Device Holder	$\pm 3.6$	Normal	1	1	$\pm 3.6 \%$	5
Power Drift	$\pm 5.0$	Rectangular	$\sqrt{3}$	1	$\pm 2.887 \%$	$\infty$
<b>Physical Parameters</b>						
Phantom Shell	$\pm 4.0$	Rectangular	$\sqrt{3}$	1	$\pm 2.309 \%$	$\infty$
Liquid conductivity (Target)	$\pm 5.0$	Rectangular	$\sqrt{3}$	0.64	$\pm 2.887 \%$	$\infty$
Liquid conductivity (Meas.)	$\pm 4.1$	Normal	1	0.64	$\pm 4.1 \%$	$\infty$
Liquid permittivity (Target)	$\pm 5.0$	Rectangular	$\sqrt{3}$	0.6	$\pm 2.887 \%$	$\infty$
Liquid permittivity (Meas.)	$\pm 4.3$	Normal	1	0.6	$\pm 4.3 \%$	$\infty$
<b>Combined Standard Uncertainty</b>					<b><math>\pm 12.1 \%</math></b>	330
<b>Expanded Uncertainty (k=2)</b>					<b><math>\pm 24.2 \%</math></b>	

The above measurement uncertainties are according to IEEE P1528 (2003)

**1900 MHz Head**

Error Description	Uncertain value $\pm\%$	Probability Distribution	Divisor	(Ci) 1g	Standard (1g)	vi 2 or Veff
<b>Measurement System</b>						
Probe calibration	$\pm 6.0$	Normal	1	1	$\pm 6.0 \%$	$\infty$
Axial isotropy	$\pm 4.7$	Rectangular	$\sqrt{3}$	1	$\pm 2.714 \%$	$\infty$
Hemispherical isotropy	$\pm 9.6$	Rectangular	$\sqrt{3}$	1	$\pm 5.543 \%$	$\infty$
Boundary Effects	$\pm 0.8$	Rectangular	$\sqrt{3}$	1	$\pm 0.462 \%$	$\infty$
Probe Linearity	$\pm 4.7$	Rectangular	$\sqrt{3}$	1	$\pm 2.714 \%$	$\infty$
Detection limits	$\pm 0.25$	Rectangular	$\sqrt{3}$	1	$\pm 0.144 \%$	$\infty$
Readout Electronics	$\pm 1.0$	Normal	1	1	$\pm 1.0 \%$	$\infty$
Response time	$\pm 0.8$	Rectangular	$\sqrt{3}$	1	$\pm 0.462 \%$	$\infty$
Integration time	$\pm 2.6$	Rectangular	$\sqrt{3}$	1	$\pm 1.501 \%$	$\infty$
RF Ambient Conditions	$\pm 3.0$	Rectangular	$\sqrt{3}$	1	$\pm 1.732 \%$	$\infty$
Probe Positioner	$\pm 0.4$	Rectangular	$\sqrt{3}$	1	$\pm 0.231 \%$	$\infty$
Probe Positioning	$\pm 2.9$	Rectangular	$\sqrt{3}$	1	$\pm 1.674 \%$	$\infty$
Algorithms for Max. SAR Eval.	$\pm 1.0$	Rectangular	$\sqrt{3}$	1	$\pm 0.577 \%$	$\infty$
<b>Test Sample Related</b>						
Device Positioning	$\pm 2.9$	Normal	1	1	$\pm 2.9 \%$	145
Device Holder	$\pm 3.6$	Normal	1	1	$\pm 3.6 \%$	5
Power Drift	$\pm 5.0$	Rectangular	$\sqrt{3}$	1	$\pm 2.887 \%$	$\infty$
<b>Physical Parameters</b>						
Phantom Shell	$\pm 4.0$	Rectangular	$\sqrt{3}$	1	$\pm 2.309 \%$	$\infty$
Liquid conductivity (Target)	$\pm 5.0$	Rectangular	$\sqrt{3}$	0.64	$\pm 2.887 \%$	$\infty$
Liquid conductivity (Meas.)	$\pm 3.8$	Normal	1	0.64	$\pm 3.8 \%$	$\infty$
Liquid permittivity (Target)	$\pm 5.0$	Rectangular	$\sqrt{3}$	0.6	$\pm 2.887 \%$	$\infty$
Liquid permittivity (Meas.)	$\pm 4.1$	Normal	1	0.6	$\pm 4.1 \%$	$\infty$
<b>Combined Standard Uncertainty</b>					<b><math>\pm 12.0 \%</math></b>	330
<b>Expanded Uncertainty (k=2)</b>					<b><math>\pm 24.1 \%</math></b>	

The above measurement uncertainties are according to IEEE P1528 (2003)

**1900 MHz Body**

Error Description	Uncertain value ±%	Probability Distribution	Divisor	(Ci) 1g	Standard (1g)	vi 2 or Veff
<b>Measurement System</b>						
Probe calibration	± 6.0	Normal	1	1	± 6.0 %	∞
Axial isotropy	± 4.7	Rectangular	√3	1	± 2.714 %	∞
Hemispherical isotropy	± 9.6	Rectangular	√3	1	± 5.543 %	∞
Boundary Effects	± 0.8	Rectangular	√3	1	± 0.462 %	∞
Probe Linearity	± 4.7	Rectangular	√3	1	± 2.714 %	∞
Detection limits	± 0.25	Rectangular	√3	1	± 0.144 %	∞
Readout Electronics	± 1.0	Normal	1	1	± 1.0 %	∞
Response time	± 0.8	Rectangular	√3	1	± 0.462 %	∞
Integration time	± 2.6	Rectangular	√3	1	± 1.501 %	∞
RF Ambient Conditions	± 3.0	Rectangular	√3	1	± 1.732 %	∞
Probe Positioner	± 0.4	Rectangular	√3	1	± 0.231 %	∞
Probe Positioning	± 2.9	Rectangular	√3	1	± 1.674 %	∞
Algorithms for Max. SAR Eval.	± 1.0	Rectangular	√3	1	± 0.577 %	∞
<b>Test Sample Related</b>						
Device Positioning	± 2.9	Normal	1	1	± 2.9 %	145
Device Holder	± 3.6	Normal	1	1	± 3.6 %	5
Power Drift	± 5.0	Rectangular	√3	1	± 2.887 %	∞
<b>Physical Parameters</b>						
Phantom Shell	± 4.0	Rectangular	√3	1	± 2.309 %	∞
Liquid conductivity (Target)	± 5.0	Rectangular	√3	0.64	± 2.887 %	∞
Liquid conductivity (Meas.)	± 4.5	Normal	1	0.64	± 4.5 %	∞
Liquid permittivity (Target)	± 5.0	Rectangular	√3	0.6	± 2.887 %	∞
Liquid permittivity (Meas.)	± 4.8	Normal	1	0.6	± 4.8 %	∞
<b>Combined Standard Uncertainty</b>					<b>± 12.2 %</b>	<b>330</b>
<b>Expanded Uncertainty (k=2)</b>					<b>± 24.4 %</b>	

The above measurement uncertainties are according to IEEE P1528 (2003)

**2450 MHz Head**

Error Description	Uncertain value $\pm\%$	Probability Distribution	Divisor	(Ci) 1g	Standard (1g)	vi 2 or Veff
<b>Measurement System</b>						
Probe calibration	$\pm 6.0$	Normal	1	1	$\pm 6.0 \%$	$\infty$
Axial isotropy	$\pm 4.7$	Rectangular	$\sqrt{3}$	1	$\pm 2.714 \%$	$\infty$
Hemispherical isotropy	$\pm 9.6$	Rectangular	$\sqrt{3}$	1	$\pm 5.543 \%$	$\infty$
Boundary Effects	$\pm 0.8$	Rectangular	$\sqrt{3}$	1	$\pm 0.462 \%$	$\infty$
Probe Linearity	$\pm 4.7$	Rectangular	$\sqrt{3}$	1	$\pm 2.714 \%$	$\infty$
Detection limits	$\pm 0.25$	Rectangular	$\sqrt{3}$	1	$\pm 0.144 \%$	$\infty$
Readout Electronics	$\pm 1.0$	Normal	1	1	$\pm 1.0 \%$	$\infty$
Response time	$\pm 0.8$	Rectangular	$\sqrt{3}$	1	$\pm 0.462 \%$	$\infty$
Integration time	$\pm 2.6$	Rectangular	$\sqrt{3}$	1	$\pm 1.501 \%$	$\infty$
RF Ambient Conditions	$\pm 3.0$	Rectangular	$\sqrt{3}$	1	$\pm 1.732 \%$	$\infty$
Probe Positioner	$\pm 0.4$	Rectangular	$\sqrt{3}$	1	$\pm 0.231 \%$	$\infty$
Probe Positioning	$\pm 2.9$	Rectangular	$\sqrt{3}$	1	$\pm 1.674 \%$	$\infty$
Algorithms for Max. SAR Eval.	$\pm 1.0$	Rectangular	$\sqrt{3}$	1	$\pm 0.577 \%$	$\infty$
<b>Test Sample Related</b>						
Device Positioning	$\pm 2.9$	Normal	1	1	$\pm 2.9 \%$	145
Device Holder	$\pm 3.6$	Normal	1	1	$\pm 3.6 \%$	5
Power Drift	$\pm 5.0$	Rectangular	$\sqrt{3}$	1	$\pm 2.887 \%$	$\infty$
<b>Physical Parameters</b>						
Phantom Shell	$\pm 4.0$	Rectangular	$\sqrt{3}$	1	$\pm 2.309 \%$	$\infty$
Liquid conductivity (Target)	$\pm 5.0$	Rectangular	$\sqrt{3}$	0.64	$\pm 2.887 \%$	$\infty$
Liquid conductivity (Meas.)	$\pm 4.7$	Normal	1	0.64	$\pm 4.7 \%$	$\infty$
Liquid permittivity (Target)	$\pm 5.0$	Rectangular	$\sqrt{3}$	0.6	$\pm 2.887 \%$	$\infty$
Liquid permittivity (Meas.)	$\pm 4.8$	Normal	1	0.6	$\pm 4.8 \%$	$\infty$
<b>Combined Standard Uncertainty</b>					<b><math>\pm 12.3 \%</math></b>	330
<b>Expanded Uncertainty (k=2)</b>					<b><math>\pm 24.5 \%</math></b>	

The above measurement uncertainties are according to IEEE P1528 (2003)

**2450 MHz Body**

Error Description	Uncertain value $\pm\%$	Probability Distribution	Divisor	(Ci) 1g	Standard (1g)	vi 2 or Veff
<b>Measurement System</b>						
Probe calibration	$\pm 6.0$	Normal	1	1	$\pm 6.0 \%$	$\infty$
Axial isotropy	$\pm 4.7$	Rectangular	$\sqrt{3}$	1	$\pm 2.714 \%$	$\infty$
Hemispherical isotropy	$\pm 9.6$	Rectangular	$\sqrt{3}$	1	$\pm 5.543 \%$	$\infty$
Boundary Effects	$\pm 0.8$	Rectangular	$\sqrt{3}$	1	$\pm 0.462 \%$	$\infty$
Probe Linearity	$\pm 4.7$	Rectangular	$\sqrt{3}$	1	$\pm 2.714 \%$	$\infty$
Detection limits	$\pm 0.25$	Rectangular	$\sqrt{3}$	1	$\pm 0.144 \%$	$\infty$
Readout Electronics	$\pm 1.0$	Normal	1	1	$\pm 1.0 \%$	$\infty$
Response time	$\pm 0.8$	Rectangular	$\sqrt{3}$	1	$\pm 0.462 \%$	$\infty$
Integration time	$\pm 2.6$	Rectangular	$\sqrt{3}$	1	$\pm 1.501 \%$	$\infty$
RF Ambient Conditions	$\pm 3.0$	Rectangular	$\sqrt{3}$	1	$\pm 1.732 \%$	$\infty$
Probe Positioner	$\pm 0.4$	Rectangular	$\sqrt{3}$	1	$\pm 0.231 \%$	$\infty$
Probe Positioning	$\pm 2.9$	Rectangular	$\sqrt{3}$	1	$\pm 1.674 \%$	$\infty$
Algorithms for Max. SAR Eval.	$\pm 1.0$	Rectangular	$\sqrt{3}$	1	$\pm 0.577 \%$	$\infty$
<b>Test Sample Related</b>						
Device Positioning	$\pm 2.9$	Normal	1	1	$\pm 2.9 \%$	145
Device Holder	$\pm 3.6$	Normal	1	1	$\pm 3.6 \%$	5
Power Drift	$\pm 5.0$	Rectangular	$\sqrt{3}$	1	$\pm 2.887 \%$	$\infty$
<b>Physical Parameters</b>						
Phantom Shell	$\pm 4.0$	Rectangular	$\sqrt{3}$	1	$\pm 2.309 \%$	$\infty$
Liquid conductivity (Target)	$\pm 5.0$	Rectangular	$\sqrt{3}$	0.64	$\pm 2.887 \%$	$\infty$
Liquid conductivity (Meas.)	$\pm 4.8$	Normal	1	0.64	$\pm 4.8 \%$	$\infty$
Liquid permittivity (Target)	$\pm 5.0$	Rectangular	$\sqrt{3}$	0.6	$\pm 2.887 \%$	$\infty$
Liquid permittivity (Meas.)	$\pm 4.9$	Normal	1	0.6	$\pm 4.9 \%$	$\infty$
<b>Combined Standard Uncertainty</b>					<b><math>\pm 12.3 \%</math></b>	330
<b>Expanded Uncertainty (k=2)</b>					<b><math>\pm 24.6 \%</math></b>	

The above measurement uncertainties are according to IEEE P1528 (2003)

**5200 MHz Head**

Error Description	Uncertain value $\pm\%$	Probability Distribution	Divisor	(Ci) 1g	Standard (1g)	vi 2 or Veff
<b>Measurement System</b>						
Probe calibration	$\pm 6.55$	Normal	1	1	$\pm 6.55 \%$	$\infty$
Axial isotropy	$\pm 4.7$	Rectangular	$\sqrt{3}$	1	$\pm 2.714 \%$	$\infty$
Hemispherical isotropy	$\pm 9.6$	Rectangular	$\sqrt{3}$	1	$\pm 5.543 \%$	$\infty$
Boundary Effects	$\pm 0.8$	Rectangular	$\sqrt{3}$	1	$\pm 0.462 \%$	$\infty$
Probe Linearity	$\pm 4.7$	Rectangular	$\sqrt{3}$	1	$\pm 2.714 \%$	$\infty$
Detection limits	$\pm 0.25$	Rectangular	$\sqrt{3}$	1	$\pm 0.144 \%$	$\infty$
Readout Electronics	$\pm 1.0$	Normal	1	1	$\pm 1.0 \%$	$\infty$
Response time	$\pm 0.8$	Rectangular	$\sqrt{3}$	1	$\pm 0.462 \%$	$\infty$
Integration time	$\pm 2.6$	Rectangular	$\sqrt{3}$	1	$\pm 1.501 \%$	$\infty$
RF Ambient Conditions	$\pm 3.0$	Rectangular	$\sqrt{3}$	1	$\pm 1.732 \%$	$\infty$
Probe Positioner	$\pm 0.4$	Rectangular	$\sqrt{3}$	1	$\pm 0.231 \%$	$\infty$
Probe Positioning	$\pm 2.9$	Rectangular	$\sqrt{3}$	1	$\pm 1.674 \%$	$\infty$
Algorithms for Max. SAR Eval.	$\pm 1.0$	Rectangular	$\sqrt{3}$	1	$\pm 0.577 \%$	$\infty$
<b>Test Sample Related</b>						
Device Positioning	$\pm 2.9$	Normal	1	1	$\pm 2.9 \%$	145
Device Holder	$\pm 3.6$	Normal	1	1	$\pm 3.6 \%$	5
Power Drift	$\pm 5.0$	Rectangular	$\sqrt{3}$	1	$\pm 2.887 \%$	$\infty$
<b>Physical Parameters</b>						
Phantom Shell	$\pm 4.0$	Rectangular	$\sqrt{3}$	1	$\pm 2.309 \%$	$\infty$
Liquid conductivity (Target)	$\pm 5.0$	Rectangular	$\sqrt{3}$	0.64	$\pm 2.887 \%$	$\infty$
Liquid conductivity (Meas.)	$\pm 4.8$	Normal	1	0.64	$\pm 4.8 \%$	$\infty$
Liquid permittivity (Target)	$\pm 5.0$	Rectangular	$\sqrt{3}$	0.6	$\pm 2.887 \%$	$\infty$
Liquid permittivity (Meas.)	$\pm 4.7$	Normal	1	0.6	$\pm 4.7 \%$	$\infty$
<b>Combined Standard Uncertainty</b>					<b><math>\pm 12.5 \%</math></b>	330
<b>Expanded Uncertainty (k=2)</b>					<b><math>\pm 25.1 \%</math></b>	

The above measurement uncertainties are according to IEEE P1528 (2003)



**5200 MHz Body**

Error Description	Uncertain value $\pm\%$	Probability Distribution	Divisor	(Ci) 1g	Standard (1g)	vi 2 or Veff
<b>Measurement System</b>						
Probe calibration	$\pm 6.55$	Normal	1	1	$\pm 6.55 \%$	$\infty$
Axial isotropy	$\pm 4.7$	Rectangular	$\sqrt{3}$	1	$\pm 2.714 \%$	$\infty$
Hemispherical isotropy	$\pm 9.6$	Rectangular	$\sqrt{3}$	1	$\pm 5.543 \%$	$\infty$
Boundary Effects	$\pm 0.8$	Rectangular	$\sqrt{3}$	1	$\pm 0.462 \%$	$\infty$
Probe Linearity	$\pm 4.7$	Rectangular	$\sqrt{3}$	1	$\pm 2.714 \%$	$\infty$
Detection limits	$\pm 0.25$	Rectangular	$\sqrt{3}$	1	$\pm 0.144 \%$	$\infty$
Readout Electronics	$\pm 1.0$	Normal	1	1	$\pm 1.0 \%$	$\infty$
Response time	$\pm 0.8$	Rectangular	$\sqrt{3}$	1	$\pm 0.462 \%$	$\infty$
Integration time	$\pm 2.6$	Rectangular	$\sqrt{3}$	1	$\pm 1.501 \%$	$\infty$
RF Ambient Conditions	$\pm 3.0$	Rectangular	$\sqrt{3}$	1	$\pm 1.732 \%$	$\infty$
Probe Positioner	$\pm 0.4$	Rectangular	$\sqrt{3}$	1	$\pm 0.231 \%$	$\infty$
Probe Positioning	$\pm 2.9$	Rectangular	$\sqrt{3}$	1	$\pm 1.674 \%$	$\infty$
Algorithms for Max. SAR Eval.	$\pm 1.0$	Rectangular	$\sqrt{3}$	1	$\pm 0.577 \%$	$\infty$
<b>Test Sample Related</b>						
Device Positioning	$\pm 2.9$	Normal	1	1	$\pm 2.9 \%$	145
Device Holder	$\pm 3.6$	Normal	1	1	$\pm 3.6 \%$	5
Power Drift	$\pm 5.0$	Rectangular	$\sqrt{3}$	1	$\pm 2.887 \%$	$\infty$
<b>Physical Parameters</b>						
Phantom Shell	$\pm 4.0$	Rectangular	$\sqrt{3}$	1	$\pm 2.309 \%$	$\infty$
Liquid conductivity (Target)	$\pm 5.0$	Rectangular	$\sqrt{3}$	0.64	$\pm 2.887 \%$	$\infty$
Liquid conductivity (Meas.)	$\pm 4.9$	Normal	1	0.64	$\pm 4.9 \%$	$\infty$
Liquid permittivity (Target)	$\pm 5.0$	Rectangular	$\sqrt{3}$	0.6	$\pm 2.887 \%$	$\infty$
Liquid permittivity (Meas.)	$\pm 4.9$	Normal	1	0.6	$\pm 4.9 \%$	$\infty$
<b>Combined Standard Uncertainty</b>					<b><math>\pm 12.6 \%</math></b>	<b>330</b>
<b>Expanded Uncertainty (k=2)</b>					<b><math>\pm 25.2 \%</math></b>	

The above measurement uncertainties are according to IEEE P1528 (2003)

**5500 MHz Head**

Error Description	Uncertain value $\pm\%$	Probability Distribution	Divisor	(Ci) 1g	Standard (1g)	vi 2 or Veff
<b>Measurement System</b>						
Probe calibration	$\pm 6.55$	Normal	1	1	$\pm 6.55 \%$	$\infty$
Axial isotropy	$\pm 4.7$	Rectangular	$\sqrt{3}$	1	$\pm 2.714 \%$	$\infty$
Hemispherical isotropy	$\pm 9.6$	Rectangular	$\sqrt{3}$	1	$\pm 5.543 \%$	$\infty$
Boundary Effects	$\pm 0.8$	Rectangular	$\sqrt{3}$	1	$\pm 0.462 \%$	$\infty$
Probe Linearity	$\pm 4.7$	Rectangular	$\sqrt{3}$	1	$\pm 2.714 \%$	$\infty$
Detection limits	$\pm 0.25$	Rectangular	$\sqrt{3}$	1	$\pm 0.144 \%$	$\infty$
Readout Electronics	$\pm 1.0$	Normal	1	1	$\pm 1.0 \%$	$\infty$
Response time	$\pm 0.8$	Rectangular	$\sqrt{3}$	1	$\pm 0.462 \%$	$\infty$
Integration time	$\pm 2.6$	Rectangular	$\sqrt{3}$	1	$\pm 1.501 \%$	$\infty$
RF Ambient Conditions	$\pm 3.0$	Rectangular	$\sqrt{3}$	1	$\pm 1.732 \%$	$\infty$
Probe Positioner	$\pm 0.4$	Rectangular	$\sqrt{3}$	1	$\pm 0.231 \%$	$\infty$
Probe Positioning	$\pm 2.9$	Rectangular	$\sqrt{3}$	1	$\pm 1.674 \%$	$\infty$
Algorithms for Max. SAR Eval.	$\pm 1.0$	Rectangular	$\sqrt{3}$	1	$\pm 0.577 \%$	$\infty$
<b>Test Sample Related</b>						
Device Positioning	$\pm 2.9$	Normal	1	1	$\pm 2.9 \%$	145
Device Holder	$\pm 3.6$	Normal	1	1	$\pm 3.6 \%$	5
Power Drift	$\pm 5.0$	Rectangular	$\sqrt{3}$	1	$\pm 2.887 \%$	$\infty$
<b>Physical Parameters</b>						
Phantom Shell	$\pm 4.0$	Rectangular	$\sqrt{3}$	1	$\pm 2.309 \%$	$\infty$
Liquid conductivity (Target)	$\pm 5.0$	Rectangular	$\sqrt{3}$	0.64	$\pm 2.887 \%$	$\infty$
Liquid conductivity (Meas.)	$\pm 4.7$	Normal	1	0.64	$\pm 4.7 \%$	$\infty$
Liquid permittivity (Target)	$\pm 5.0$	Rectangular	$\sqrt{3}$	0.6	$\pm 2.887 \%$	$\infty$
Liquid permittivity (Meas.)	$\pm 4.5$	Normal	1	0.6	$\pm 4.5 \%$	$\infty$
<b>Combined Standard Uncertainty</b>					<b><math>\pm 12.5 \%</math></b>	330
<b>Expanded Uncertainty (k=2)</b>					<b><math>\pm 25.0 \%</math></b>	

The above measurement uncertainties are according to IEEE P1528 (2003)

**5500 MHz Body**

Error Description	Uncertain value $\pm\%$	Probability Distribution	Divisor	(Ci) 1g	Standard (1g)	vi 2 or Veff
<b>Measurement System</b>						
Probe calibration	$\pm 6.55$	Normal	1	1	$\pm 6.55 \%$	$\infty$
Axial isotropy	$\pm 4.7$	Rectangular	$\sqrt{3}$	1	$\pm 2.714 \%$	$\infty$
Hemispherical isotropy	$\pm 9.6$	Rectangular	$\sqrt{3}$	1	$\pm 5.543 \%$	$\infty$
Boundary Effects	$\pm 0.8$	Rectangular	$\sqrt{3}$	1	$\pm 0.462 \%$	$\infty$
Probe Linearity	$\pm 4.7$	Rectangular	$\sqrt{3}$	1	$\pm 2.714 \%$	$\infty$
Detection limits	$\pm 0.25$	Rectangular	$\sqrt{3}$	1	$\pm 0.144 \%$	$\infty$
Readout Electronics	$\pm 1.0$	Normal	1	1	$\pm 1.0 \%$	$\infty$
Response time	$\pm 0.8$	Rectangular	$\sqrt{3}$	1	$\pm 0.462 \%$	$\infty$
Integration time	$\pm 2.6$	Rectangular	$\sqrt{3}$	1	$\pm 1.501 \%$	$\infty$
RF Ambient Conditions	$\pm 3.0$	Rectangular	$\sqrt{3}$	1	$\pm 1.732 \%$	$\infty$
Probe Positioner	$\pm 0.4$	Rectangular	$\sqrt{3}$	1	$\pm 0.231 \%$	$\infty$
Probe Positioning	$\pm 2.9$	Rectangular	$\sqrt{3}$	1	$\pm 1.674 \%$	$\infty$
Algorithms for Max. SAR Eval.	$\pm 1.0$	Rectangular	$\sqrt{3}$	1	$\pm 0.577 \%$	$\infty$
<b>Test Sample Related</b>						
Device Positioning	$\pm 2.9$	Normal	1	1	$\pm 2.9 \%$	145
Device Holder	$\pm 3.6$	Normal	1	1	$\pm 3.6 \%$	5
Power Drift	$\pm 5.0$	Rectangular	$\sqrt{3}$	1	$\pm 2.887 \%$	$\infty$
<b>Physical Parameters</b>						
Phantom Shell	$\pm 4.0$	Rectangular	$\sqrt{3}$	1	$\pm 2.309 \%$	$\infty$
Liquid conductivity (Target)	$\pm 5.0$	Rectangular	$\sqrt{3}$	0.64	$\pm 2.887 \%$	$\infty$
Liquid conductivity (Meas.)	$\pm 4.8$	Normal	1	0.64	$\pm 4.8 \%$	$\infty$
Liquid permittivity (Target)	$\pm 5.0$	Rectangular	$\sqrt{3}$	0.6	$\pm 2.887 \%$	$\infty$
Liquid permittivity (Meas.)	$\pm 4.9$	Normal	1	0.6	$\pm 4.9 \%$	$\infty$
<b>Combined Standard Uncertainty</b>					<b><math>\pm 12.6 \%</math></b>	<b>330</b>
<b>Expanded Uncertainty (k=2)</b>					<b><math>\pm 25.1 \%</math></b>	

The above measurement uncertainties are according to IEEE P1528 (2003)

**5800 MHz Head**

Error Description	Uncertain value $\pm\%$	Probability Distribution	Divisor	(Ci) 1g	Standard (1g)	vi 2 or Veff
<b>Measurement System</b>						
Probe calibration	$\pm 6.55$	Normal	1	1	$\pm 6.55 \%$	$\infty$
Axial isotropy	$\pm 4.7$	Rectangular	$\sqrt{3}$	1	$\pm 2.714 \%$	$\infty$
Hemispherical isotropy	$\pm 9.6$	Rectangular	$\sqrt{3}$	1	$\pm 5.543 \%$	$\infty$
Boundary Effects	$\pm 0.8$	Rectangular	$\sqrt{3}$	1	$\pm 0.462 \%$	$\infty$
Probe Linearity	$\pm 4.7$	Rectangular	$\sqrt{3}$	1	$\pm 2.714 \%$	$\infty$
Detection limits	$\pm 0.25$	Rectangular	$\sqrt{3}$	1	$\pm 0.144 \%$	$\infty$
Readout Electronics	$\pm 1.0$	Normal	1	1	$\pm 1.0 \%$	$\infty$
Response time	$\pm 0.8$	Rectangular	$\sqrt{3}$	1	$\pm 0.462 \%$	$\infty$
Integration time	$\pm 2.6$	Rectangular	$\sqrt{3}$	1	$\pm 1.501 \%$	$\infty$
RF Ambient Conditions	$\pm 3.0$	Rectangular	$\sqrt{3}$	1	$\pm 1.732 \%$	$\infty$
Probe Positioner	$\pm 0.4$	Rectangular	$\sqrt{3}$	1	$\pm 0.231 \%$	$\infty$
Probe Positioning	$\pm 2.9$	Rectangular	$\sqrt{3}$	1	$\pm 1.674 \%$	$\infty$
Algorithms for Max. SAR Eval.	$\pm 1.0$	Rectangular	$\sqrt{3}$	1	$\pm 0.577 \%$	$\infty$
<b>Test Sample Related</b>						
Device Positioning	$\pm 2.9$	Normal	1	1	$\pm 2.9 \%$	145
Device Holder	$\pm 3.6$	Normal	1	1	$\pm 3.6 \%$	5
Power Drift	$\pm 5.0$	Rectangular	$\sqrt{3}$	1	$\pm 2.887 \%$	$\infty$
<b>Physical Parameters</b>						
Phantom Shell	$\pm 4.0$	Rectangular	$\sqrt{3}$	1	$\pm 2.309 \%$	$\infty$
Liquid conductivity (Target)	$\pm 5.0$	Rectangular	$\sqrt{3}$	0.64	$\pm 2.887 \%$	$\infty$
Liquid conductivity (Meas.)	$\pm 4.8$	Normal	1	0.64	$\pm 4.8 \%$	$\infty$
Liquid permittivity (Target)	$\pm 5.0$	Rectangular	$\sqrt{3}$	0.6	$\pm 2.887 \%$	$\infty$
Liquid permittivity (Meas.)	$\pm 4.8$	Normal	1	0.6	$\pm 4.8 \%$	$\infty$
<b>Combined Standard Uncertainty</b>					<b><math>\pm 12.5 \%</math></b>	<b>330</b>
<b>Expanded Uncertainty (k=2)</b>					<b><math>\pm 25.1 \%</math></b>	

The above measurement uncertainties are according to IEEE P1528 (2003)

**5800 MHz Body**

Error Description	Uncertain value ±%	Probability Distribution	Divisor	(Ci) 1g	Standard (1g)	vi 2 or Veff
<b>Measurement System</b>						
Probe calibration	± 6.55	Normal	1	1	± 6.55 %	∞
Axial isotropy	± 4.7	Rectangular	√3	1	± 2.714 %	∞
Hemispherical isotropy	± 9.6	Rectangular	√3	1	± 5.543 %	∞
Boundary Effects	± 0.8	Rectangular	√3	1	± 0.462 %	∞
Probe Linearity	± 4.7	Rectangular	√3	1	± 2.714 %	∞
Detection limits	± 0.25	Rectangular	√3	1	± 0.144 %	∞
Readout Electronics	± 1.0	Normal	1	1	± 1.0 %	∞
Response time	± 0.8	Rectangular	√3	1	± 0.462 %	∞
Integration time	± 2.6	Rectangular	√3	1	± 1.501 %	∞
RF Ambient Conditions	± 3.0	Rectangular	√3	1	± 1.732 %	∞
Probe Positioner	± 0.4	Rectangular	√3	1	± 0.231 %	∞
Probe Positioning	± 2.9	Rectangular	√3	1	± 1.674 %	∞
Algorithms for Max. SAR Eval.	± 1.0	Rectangular	√3	1	± 0.577 %	∞
<b>Test Sample Related</b>						
Device Positioning	± 2.9	Normal	1	1	± 2.9 %	145
Device Holder	± 3.6	Normal	1	1	± 3.6 %	5
Power Drift	± 5.0	Rectangular	√3	1	± 2.887 %	∞
<b>Physical Parameters</b>						
Phantom Shell	± 4.0	Rectangular	√3	1	± 2.309 %	∞
Liquid conductivity (Target)	± 5.0	Rectangular	√3	0.64	± 2.887 %	∞
Liquid conductivity (Meas.)	± 4.5	Normal	1	0.64	± 4.5 %	∞
Liquid permittivity (Target)	± 5.0	Rectangular	√3	0.6	± 2.887 %	∞
Liquid permittivity (Meas.)	± 4.8	Normal	1	0.6	± 4.8 %	∞
<b>Combined Standard Uncertainty</b>					<b>± 12.5 %</b>	<b>330</b>
<b>Expanded Uncertainty (k=2)</b>					<b>± 25.0 %</b>	

The above measurement uncertainties are according to IEEE P1528 (2003)

## 8. ANSI / IEEE C95.1-2005 RF EXPOSURE LIMITS

### Uncontrolled Environment

UNCONTROLLED ENVIRONMENTS are defined as locations where there is the exposure of individuals who have no knowledge or control of their exposure. The general population/uncontrolled exposure limits are applicable to situations in which the general public may be exposed or in which persons who are exposed as a consequence of their employment may not be made fully aware of the potential for exposure or cannot exercise control over their exposure. Members of the general public would come under this category when exposure is not employment-related; for example, in the case of a wireless transmitter that exposes persons in its vicinity.

### Controlled Environment

CONTROLLED ENVIRONMENTS are defined as locations where there is exposure that may be incurred by persons who are aware of the potential for exposure, (i.e. as a result of employment or occupation). In general, occupational/controlled exposure limits are employment, who have been made fully aware of the potential for exposure and can exercise control over their exposure. This exposure category is also applicable when the exposure is of a transient nature due to incidental passage through a location where the exposure levels may be higher than the general population/uncontrolled limits, but the exposed person is fully aware of the potential for exposure and can exercise control over his or her exposure by leaving the area or by some other appropriate means.

**Table 8.1.SAR Human Exposure Specified in ANSI/IEEE C95.1-2005**

	HUMAN EXPOSURE LIMITS	
	General Public Exposure (W/kg) or (mW/g)	Occupational Exposure (W/kg) or (mW/g)
SPATIAL PEAK SAR * (Brain)	1.60	8.00
SPATIAL AVERAGE SAR ** (Whole Body)	0.08	0.40
SPATIAL PEAK SAR *** (Hands / Feet / Ankle / Wrist)	4.00	20.0

#### NOTES:

\* The Spatial Peak value of the SAR averaged over any 1 g of tissue

(defined as a tissue volume in the shape of a cube) and over the appropriate averaging time.

\*\* The Spatial Average value of the SAR averaged over the whole-body.

\*\*\* The Spatial Peak value of the SAR averaged over any 10 g of tissue

(defined as a tissue volume in the shape of a cube) and over the appropriate averaging time.

Uncontrolled Environments are defined as locations where there is the exposure of individuals who have no knowledge or control of their exposure.

Controlled Environments are defined as locations where there is exposure that may be incurred by persons who are aware of the potential for exposure, (i.e.as a result of employment or occupation).

## 9. SYSTEM VERIFICATION

### 9.1 Tissue Verification

MEASURED TISSUE PARAMETERS									
Freq. [MHz]	Date(s)	Liquid	Ambient Temp.[°C]	Liquid Temp.[°C]	Parameters	Target Value	Measured Value	Deviation [%]	Limit [%]
835	Nov. 07. 2012	Head	22.0	22.3	$\epsilon_r$	41.50	42.049	1.32	$\pm 5$
					$\sigma$	0.900	0.893	-0.78	$\pm 5$
835	Nov. 07. 2012	Body	22.0	22.3	$\epsilon_r$	55.20	56.827	2.95	$\pm 5$
					$\sigma$	0.970	0.961	-0.93	$\pm 5$
835	Nov. 09. 2012	Head	22.1	22.4	$\epsilon_r$	41.50	41.182	-0.77	$\pm 5$
					$\sigma$	0.900	0.882	-2.00	$\pm 5$
835	Nov. 09. 2012	Body	22.1	22.4	$\epsilon_r$	55.20	56.761	2.83	$\pm 5$
					$\sigma$	0.970	0.960	-1.03	$\pm 5$
1900	Nov. 08. 2012	Head	22.2	22.1	$\epsilon_r$	40.00	39.820	-0.45	$\pm 5$
					$\sigma$	1.400	1.390	-0.71	$\pm 5$
1900	Nov. 08. 2012	Body	22.2	22.1	$\epsilon_r$	53.30	54.165	1.62	$\pm 5$
					$\sigma$	1.520	1.549	1.91	$\pm 5$
2450	Nov. 10. 2012	Head	22.2	22.5	$\epsilon_r$	39.20	40.434	3.15	$\pm 5$
					$\sigma$	1.800	1.849	2.72	$\pm 5$
2450	Nov. 10. 2012	Body	22.2	22.5	$\epsilon_r$	52.70	54.558	3.53	$\pm 5$
					$\sigma$	1.950	1.965	0.77	$\pm 5$
2450	Dec. 10, 2012	Head	22.1	22.4	$\epsilon_r$	39.20	38.233	-2.47	$\pm 5$
					$\sigma$	1.800	1.845	2.50	$\pm 5$
2450	Dec. 11, 2012	Body	22.3	22.7	$\epsilon_r$	52.70	54.497	3.41	$\pm 5$
					$\sigma$	1.950	1.961	0.56	$\pm 5$
5180	Nov. 12. 2012	Head	22.0	22.1	$\epsilon_r$	36.00	35.602	-1.11	$\pm 5$
					$\sigma$	4.636	4.610	-0.56	$\pm 5$
5180	Nov. 13. 2012	Body	22.2	22.3	$\epsilon_r$	49.04	47.359	-3.43	$\pm 5$
					$\sigma$	5.276	5.178	-1.86	$\pm 5$
5200	Nov. 12. 2012	Head	22.0	22.1	$\epsilon_r$	36.00	35.559	-1.23	$\pm 5$
					$\sigma$	4.660	4.638	-0.47	$\pm 5$
5200	Nov. 13. 2012	Body	22.2	22.3	$\epsilon_r$	49.00	47.321	-3.43	$\pm 5$
					$\sigma$	5.300	5.208	-1.74	$\pm 5$
5260	Nov. 12. 2012	Head	22.0	22.1	$\epsilon_r$	35.90	35.458	-1.23	$\pm 5$
					$\sigma$	4.720	4.709	-0.23	$\pm 5$
5260	Nov. 13. 2012	Body	22.2	22.3	$\epsilon_r$	48.90	47.209	-3.46	$\pm 5$
					$\sigma$	5.372	5.286	-1.60	$\pm 5$
5500	Nov. 12. 2012	Head	22.0	22.1	$\epsilon_r$	35.60	35.029	-1.60	$\pm 5$
					$\sigma$	4.960	4.982	0.44	$\pm 5$
5500	Nov. 13. 2012	Body	22.2	22.3	$\epsilon_r$	48.60	46.769	-3.77	$\pm 5$
					$\sigma$	5.650	5.597	-0.94	$\pm 5$
5580	Nov. 12. 2012	Head	22.0	22.1	$\epsilon_r$	35.52	34.886	-1.78	$\pm 5$
					$\sigma$	5.048	5.083	0.69	$\pm 5$
5580	Nov. 13. 2012	Body	22.2	22.3	$\epsilon_r$	48.52	46.632	-3.89	$\pm 5$
					$\sigma$	5.746	5.705	-0.71	$\pm 5$
5785	Nov. 12. 2012	Head	22.0	22.1	$\epsilon_r$	35.32	34.517	-2.27	$\pm 5$
					$\sigma$	5.215	5.321	2.03	$\pm 5$
5785	Nov. 13. 2012	Body	22.2	22.3	$\epsilon_r$	48.22	46.275	-4.03	$\pm 5$
					$\sigma$	5.983	5.973	-0.17	$\pm 5$
5800	Nov. 12. 2012	Head	22.0	22.1	$\epsilon_r$	35.30	34.508	-2.24	$\pm 5$
					$\sigma$	5.270	5.341	1.35	$\pm 5$
5800	Nov. 13. 2012	Body	22.2	22.3	$\epsilon_r$	48.20	46.258	-4.03	$\pm 5$
					$\sigma$	6.000	5.993	-0.12	$\pm 5$

**Tissue Verification Note**

Note : The dielectric parameters of the liquids were verified prior to the SAR evaluation using an Agilent E5071C Dielectric Probe Kit and Agilent Network Analyzer.

The above measured tissue parameters were used in the DASY software to perform interpolation via the DASY software to determine actual dielectric parameters at the test frequencies (per IEEE 1528 6.6.1.2). The SAR test plots may slightly differ from the table above since the DASY software rounds to three significant digits. Probe calibration used within  $\pm 100$  MHz of the test frequency in either 5.725 - 5.85 or 5.47-5.725 GHz is acceptable per KDB Publication 865664 since the design of the SAR probe supports the extended frequency, provided the DASY software version recommended is used for the tests, and the expanded calibration uncertainty (k=2) is less than or equal to 15% (See SAR probe calibration certificate for this information). The dielectric and conductivities measured are within 10% and 5% respectively of the target parameters specified in Supplement C 01-01.

**Measurement Procedure for Tissue verification**

- 1) The network analyzer and probe system was configured and calibrated.
- 2) The probe was immersed in the sample which was placed in a nonmetallic container. Trapped air bubbles beneath the flange were minimized by placing the probe at a slight angle.
- 3) The complex admittance with respect to the probe aperture was measured
- 4) The complex relative permittivity , for example from the below equation (Pournaropoulos and Misra):

$$Y = \frac{j2\omega\epsilon_r\epsilon_0}{[\ln(b/a)]^2} \int_a^b \int_a^b \int_0^\pi \cos\phi' \frac{\exp[-j\omega r(\mu_0\epsilon_r'\epsilon_0)^{1/2}]}{r} d\phi' d\rho' d\rho$$

where Y is the admittance of the probe in contact with the sample, the primed and unprimed coordinates refer to source and observation points, respectively,  $r^2 = \rho^2 + \rho'^2 - 2\rho\rho' \cos\phi'$ ,  $\omega$  is the angular frequency, and  $j = \sqrt{-1}$ .



### 9.2 Test System Validation

Prior to assessment, the system is verified to the  $\pm 10\%$  of the specifications at 835 MHz, 1900 MHz, 2450 MHz, 5200 MHz, 5500 MHz and 5800 MHz by using the system validation kit(s). (Graphic Plots Attached)

SYSTEM DIPOLE VALIDATION TARGET & MEASURED											
Freq. [MHz]	System Validation Kit	Date(s)	Liquid	Ambient Temp.[°C]	Liquid Temp.[°C]	Probe S/N	Input Power (mW)	1 W Target SAR <sub>1g</sub> (W/kg)	Measured SAR <sub>1g</sub> (W/kg)	1 W Normalized SAR <sub>1g</sub> (W/kg)	Deviation [%]
835	D835V2, SN:464	Nov. 07. 2012	Head	22.0	22.3	3866	250	9.40	2.31	9.24	-1.70
835	D835V2, SN:464	Nov. 07. 2012	Body	22.0	22.3	3866	250	9.53	2.50	10.00	4.93
835	D835V2, SN:464	Nov. 09. 2012	Head	22.1	22.4	3866	250	9.40	2.45	9.80	4.26
835	D835V2, SN:464	Nov. 09. 2012	Body	22.1	22.4	3866	250	9.53	2.49	9.96	4.51
1900	D1900V2, SN:5d029	Nov. 08. 2012	Head	22.2	22.1	3866	250	38.4	10.2	40.80	6.25
1900	D1900V2, SN:5d029	Nov. 08. 2012	Body	22.2	22.1	3866	250	39.6	9.72	38.88	-1.82
2450	D2450V2, SN:726	Nov. 10. 2012	Head	22.2	22.5	3866	250	52.0	13.0	52.00	0.00
2450	D2450V2, SN:726	Nov. 10. 2012	Body	22.2	22.5	3866	250	50.2	12.9	51.60	2.79
2450	D2450V2, SN:726	Dec. 10, 2012	Head	22.1	22.4	3866	250	52.0	13.1	52.40	0.77
2450	D2450V2, SN:726	Dec. 11, 2012	Body	22.3	22.7	3866	250	50.2	13.0	52.00	3.59
5200	D5GHzV2, SN:1103	Nov. 12. 2012	Head	22.0	22.1	3643	100	79.7	7.59	75.90	-4.77
5200	D5GHzV2, SN:1103	Nov. 13. 2012	Body	22.2	22.3	3643	100	72.8	7.57	75.70	3.98
5500	D5GHzV2, SN:1103	Nov. 12. 2012	Head	22.0	22.1	3866	100	84.9	8.30	83.00	-2.24
5500	D5GHzV2, SN:1103	Nov. 13. 2012	Body	22.2	22.3	3866	100	77.3	7.97	79.70	3.10
5800	D5GHzV2, SN:1103	Nov. 12. 2012	Head	22.0	22.1	3643	100	79.9	8.12	81.20	1.63
5800	D5GHzV2, SN:1103	Nov. 13. 2012	Body	22.2	22.3	3643	100	71.5	7.16	71.60	0.14

Note1 : Validation was measured with input 100 mW, 250 mW and normalized to 1W.

Note2 : Per KDB Publication 865664, when a reference dipole is not defined within  $\pm 100$ MHz of the test frequency, the system verification may be conducted within  $\pm 200$  MHz of the center frequency of the measurement frequencies if the SAR probe calibration is valid and the same tissue-equivalent matter is used for verification and test measurements.

Note3 : To confirm the proper SAR liquid depth, the z-axis plots from the system verifications were included since the system verifications were performed using the same liquid, probe and DAE as the SAR tests in the same time period.

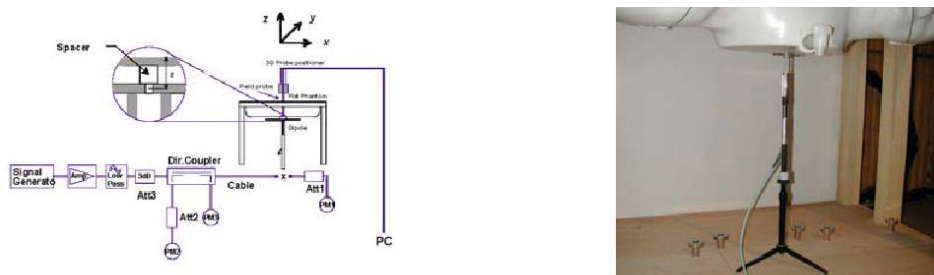


Figure 9.1 Dipole Validation Test Setup

## 10. Multiple TRANSMITTERS SAR CONSIDERATIONS

The following procedures adopted from “FCC SAR Evaluation Considerations for Handsets with Multiple Transmitters”v01r05 #648474 on September 2008 are applicable to handsets with built-in unlicensed transmitters such as 802.11 a/b/g and Bluetooth devices which may simultaneously transmit with the licensed transmitter.

	2.45	5.15-5.35	5.47-5.85	GHz
<b>P<sub>Ref</sub></b>	<b>12</b>	<b>6</b>	<b>5</b>	<b>mW</b>
Device output power should be rounded to the nearest mW to compare with values specified in this table				

Table 10.1 Output Power Thresholds for Unlicensed Transmitters

	Individual Transmitter	Simultaneous Transmission
Licensed Transmitters	<u>Routine evaluation required</u>	<b>SAR not required:</b> <u>Unlicensed only</u>
Unlicensed Transmitters	<p><b>When there is no simultaneous transmission –</b></p> <ul style="list-style-type: none"> <li>output ≤ 60/f: SAR not required</li> <li>output &gt; 60/f: stand-alone SAR required</li> </ul> <p><b>When there is simultaneous transmission –</b> <u>Stand-alone SAR not required when</u></p> <ul style="list-style-type: none"> <li>output ≤ 2·P<sub>Ref</sub> and antenna is ≥ 5.0 cm from other antennas</li> <li>output ≤ P<sub>Ref</sub> and antenna is ≥ 2.5 cm from other antennas</li> <li>output ≤ P<sub>Ref</sub> and antenna is &lt; 2.5 cm from other antennas, each with either output power ≤ P<sub>Ref</sub> or 1-g SAR &lt; 1.2 W/kg</li> </ul> <p><u>Otherwise stand-alone SAR is required</u></p> <p><b>When stand-alone SAR is required</b></p> <ul style="list-style-type: none"> <li>test SAR on highest output channel for each wireless mode and exposure condition</li> <li>if SAR for highest output channel is &gt; 50% of SAR limit, evaluate all channels according to normal procedures</li> </ul>	<ul style="list-style-type: none"> <li>when stand-alone 1-g SAR is not required and antenna is ≥ 5 cm from other antennas</li> </ul> <p><u>Licensed &amp; Unlicensed</u></p> <ul style="list-style-type: none"> <li>when the sum of the 1-g SAR is &lt; 1.6 W/kg for all simultaneous transmitting antennas</li> <li>when SAR to peak location separation ratio of simultaneous transmitting antenna pair is &lt; 0.3</li> </ul> <p><b>SAR required:</b> <u>Licensed &amp; Unlicensed</u></p> <p>antenna pairs with SAR to peak location separation ratio ≥ 0.3; test is only required for the configuration that results in the highest SAR in stand-alone configuration for each wireless mode and exposure condition</p> <p><b>Note: simultaneous transmission exposure conditions for head and body can be different for different style phones; therefore, different test requirements may apply</b></p>
Jaw, Mouth and Nose	<p><u>Flat phantom SAR required</u></p> <ul style="list-style-type: none"> <li>when measurement is required in tight regions of SAM and it is not feasible or the results can be questionable due to probe tilt, calibration, positioning and orientation issues</li> <li>position rectangular and clam-shell phones according to flat phantom procedures and conduct SAR measurements for these specific locations</li> </ul>	When simultaneous transmission SAR testing is required, contact the FCC Laboratory for interim guidance.

Table 10.2 SAR Evaluation Requirements for Cell phones with Multiple Transmitters

### SAR Test Exclusions Applied

Since Wireless Router operations are not allowed by the chipset firmware using 5 GHz WIFI, only 2.4 GHz WIFI Hotspot SAR tests and combinations are considered for SAR with respect to Wireless Router configurations in KDB 941225 D06.

Per KDB Publication 648474, **2.4 and 5 GHz W-LAN SAR is required since** (FCC ID: ZNFE975K):

The maximum average conducted power of 2.4 GHz WIFI is 17.57 dBm (57.148 mW)

The maximum average conducted power of 5 GHz WIFI is 13.78 dBm (23.878 mW)

The Maximum average conducted power of Bluetooth is 6.73 dBm (4.710 mW)

The Bluetooth / W-LAN to main antenna separation distance is 83.3 mm. (See Section 13.2 Antenna Distance)

- Note 1: unlicensed transmitters stand alone SAR is not required when following condition.
  - Output ≤ 2·P<sub>Ref</sub>, and antenna is ≥ 5.0 cm from other antennas

Therefore Bluetooth stand alone SAR is not required.

Therefore 2.4G W-LAN stand alone SAR is required.

Therefore 5G W-LAN stand alone SAR is required.

**10.1 SAR for Simultaneous Transmission**

No.	Capable TX Configuration	GSM 850/1900 voice	GPRS/EDGE 850/1900	WCDMA 850 voice	WCDMA 850 data (HSDPA,HSUPA)	WIFI 2.4Ghz 802.11b/g/n	WIFI 5Ghz 802.11a/n	Bluetooth 2.4Ghz	NFC
1	GSM 850/1900 voice		X	X	X	O	O	O	O
2	GPRS/EDGE 850/1900(data)	X		X	X	O	O	O	O
3	WCDMA 850 voice	X	X		X	O	O	O	O
4	WCDMA 850 data (HSDPA,HSUPA)	X	X	X		O	O	O	O
5	WIFI 802.11b/g/n 2.4Ghz	O	O	O	O		X	X	O
6	WIFI 802.11a/n 5Ghz	O	O	O	O	X		X	O
7	Bluetooth 2.4Ghz	O	O	O	O	X	X		O
8	NFC	O	O	O	O	O	O	O	

O : Supported , X : Not supported  
1. Bluetooth and WiFi can not transmit simultaneously

- WiFi 2.4Ghz is supported Hotspot, WiFi 5Ghz is not supported Hotspot.
- WCDMA, GPRS/EDGE is supported Hotspot.
- VoIP is supported in GPRS/EDGE
- Bluetooth and WiFi cannot transmit simultaneously since they share the same chip.
- GSM and WCDMA cannot transmit simultaneously since they share the same chip.

**SAR for Simultaneous Transmission(Continued)**

Simult TX	Configuration	GSM850 SAR (W/kg)	2.4G W-LAN (802.11b) SAR (W/kg)	$\Sigma$ SAR (W/kg)	Simult TX	Configuration	PCS1900 SAR (W/kg)	2.4G W-LAN (802.11b) SAR (W/kg)	$\Sigma$ SAR (W/kg)
Head SAR	Left Touch	0.195	0.241	0.436	Head SAR	Left Touch	0.326	0.241	0.567
	Right Touch	0.128	0.160	0.288		Right Touch	0.226	0.160	0.386
	Left Tilt	0.104	0.081	0.185		Left Tilt	0.115	0.081	0.196
	Right Tilt	0.070	0.053	0.123		Right Tilt	0.084	0.053	0.137
Simult TX	Configuration	WCDMA 850 SAR (W/kg)	2.4G W-LAN (802.11b) SAR (W/kg)	$\Sigma$ SAR (W/kg)					
Head SAR	Left Touch	0.211	0.241	0.452					
	Right Touch	0.154	0.160	0.314					
	Left Tilt	0.096	0.081	0.177					
	Right Tilt	0.077	0.053	0.130					

Table 10.1 Simultaneous Transmission Summation for Held to Ear Voice Call with 2.4 GHz W-LAN

Simult TX	Configuration	GSM850 GPRS SAR (W/kg)	2.4G W-LAN (802.11b) SAR (W/kg)	$\Sigma$ SAR (W/kg)	Simult TX	Configuration	PCS1900 GPRS SAR (W/kg)	2.4G W-LAN (802.11b) SAR (W/kg)	$\Sigma$ SAR (W/kg)
Head SAR	Left Touch	0.261	0.241	0.502	Head SAR	Left Touch	0.652	0.241	0.893
	Right Touch	0.177	0.160	0.337		Right Touch	0.468	0.160	0.628
	Left Tilt	0.130	0.081	0.211		Left Tilt	0.252	0.081	0.333
	Right Tilt	0.080	0.053	0.133		Right Tilt	0.148	0.053	0.201

Table 10.2 Simultaneous Transmission Summation for Held to Ear GPRS with 2.4 GHz W-LAN

Simult TX	Configuration	GSM850 SAR (W/kg)	5.8G W-LAN (802.11a) SAR (W/kg)	$\Sigma$ SAR (W/kg)	Simult TX	Configuration	PCS1900 SAR (W/kg)	5.8G W-LAN (802.11a) SAR (W/kg)	$\Sigma$ SAR (W/kg)
Head SAR	Left Touch	0.195	0.043	0.238	Head SAR	Left Touch	0.326	0.043	0.369
	Right Touch	0.128	0.066	0.194		Right Touch	0.226	0.066	0.292
	Left Tilt	0.104	0.063	0.167		Left Tilt	0.115	0.063	0.178
	Right Tilt	0.070	0.068	0.138		Right Tilt	0.084	0.068	0.152
Simult TX	Configuration	WCDMA 850 SAR (W/kg)	5.8G W-LAN (802.11a) SAR (W/kg)	$\Sigma$ SAR (W/kg)					
Head SAR	Left Touch	0.211	0.043	0.254					
	Right Touch	0.154	0.066	0.220					
	Left Tilt	0.096	0.063	0.159					
	Right Tilt	0.077	0.068	0.145					

Table 10.3 Simultaneous Transmission Summation for Held to Ear Voice Call with 5.8 GHz W-LAN

Simult TX	Configuration	GSM850 GPRS SAR (W/kg)	5.8G W-LAN (802.11a) SAR (W/kg)	$\Sigma$ SAR (W/kg)	Simult TX	Configuration	PCS1900 GPRS SAR (W/kg)	5.8G W-LAN (802.11a) SAR (W/kg)	$\Sigma$ SAR (W/kg)
Head SAR	Left Touch	0.261	0.043	0.304	Head SAR	Left Touch	0.652	0.043	0.695
	Right Touch	0.177	0.066	0.243		Right Touch	0.468	0.066	0.534
	Left Tilt	0.130	0.063	0.193		Left Tilt	0.252	0.063	0.315
	Right Tilt	0.080	0.068	0.148		Right Tilt	0.148	0.068	0.216

Table 10.4 Simultaneous Transmission Summation for Held to Ear GPRS with 5.8 GHz W-LAN

**SAR for Simultaneous Transmission(Continued)**

Simult TX	Configuration	GSM850 SAR (W/kg)	5.2G W-LAN (802.11a) SAR (W/kg)	Σ SAR (W/kg)	Simult TX	Configuration	PCS1900 SAR (W/kg)	5.2G W-LAN (802.11a) SAR (W/kg)	Σ SAR (W/kg)
Head SAR	Left Touch	0.195	0.070	0.265	Head SAR	Left Touch	0.326	0.070	0.396
	Right Touch	0.128	0.051	0.179		Right Touch	0.226	0.051	0.277
	Left Tilt	0.104	0.057	0.161		Left Tilt	0.115	0.057	0.172
	Right Tilt	0.070	0.052	0.122		Right Tilt	0.084	0.052	0.136
Simult TX	Configuration	WCDMA 850 SAR (W/kg)	5.2G W-LAN (802.11a) SAR (W/kg)	Σ SAR (W/kg)					
Head SAR	Left Touch	0.211	0.070	0.281					
	Right Touch	0.154	0.051	0.205					
	Left Tilt	0.096	0.057	0.153					
	Right Tilt	0.077	0.052	0.129					

Table 10.5 Simultaneous Transmission Summation for Held to Ear Voice Call with 5.2 GHz W-LAN

Simult TX	Configuration	GSM850 GPRS SAR (W/kg)	5.2G W-LAN (802.11a) SAR (W/kg)	Σ SAR (W/kg)	Simult TX	Configuration	PCS1900 GPRS SAR (W/kg)	5.2G W-LAN (802.11a) SAR (W/kg)	Σ SAR (W/kg)
Head SAR	Left Touch	0.261	0.070	0.331	Head SAR	Left Touch	0.652	0.070	0.722
	Right Touch	0.177	0.051	0.228		Right Touch	0.468	0.051	0.519
	Left Tilt	0.130	0.057	0.187		Left Tilt	0.252	0.057	0.309
	Right Tilt	0.080	0.052	0.132		Right Tilt	0.148	0.052	0.200

Table 10.6 Simultaneous Transmission Summation for Held to Ear GPRS with 5.2 GHz W-LAN

Simult TX	Configuration	GSM850 SAR (W/kg)	5.3G W-LAN (802.11a) SAR (W/kg)	Σ SAR (W/kg)	Simult TX	Configuration	PCS1900 SAR (W/kg)	5.3G W-LAN (802.11a) SAR (W/kg)	Σ SAR (W/kg)
Head SAR	Left Touch	0.195	0.081	0.276	Head SAR	Left Touch	0.326	0.081	0.407
	Right Touch	0.128	0.044	0.172		Right Touch	0.226	0.044	0.270
	Left Tilt	0.104	0.052	0.156		Left Tilt	0.115	0.052	0.167
	Right Tilt	0.070	0.045	0.115		Right Tilt	0.084	0.045	0.129
Simult TX	Configuration	WCDMA 850 SAR (W/kg)	5.3G W-LAN (802.11a) SAR (W/kg)	Σ SAR (W/kg)					
Head SAR	Left Touch	0.211	0.081	0.292					
	Right Touch	0.154	0.044	0.198					
	Left Tilt	0.096	0.052	0.148					
	Right Tilt	0.077	0.045	0.122					

Table 10.7 Simultaneous Transmission Summation for Held to Ear Voice Call with 5.3 GHz W-LAN

Simult TX	Configuration	GSM850 GPRS SAR (W/kg)	5.3G W-LAN (802.11a) SAR (W/kg)	Σ SAR (W/kg)	Simult TX	Configuration	PCS1900 GPRS SAR (W/kg)	5.3G W-LAN (802.11a) SAR (W/kg)	Σ SAR (W/kg)
Head SAR	Left Touch	0.261	0.081	0.342	Head SAR	Left Touch	0.652	0.081	0.733
	Right Touch	0.177	0.044	0.221		Right Touch	0.468	0.044	0.512
	Left Tilt	0.130	0.052	0.182		Left Tilt	0.252	0.052	0.304
	Right Tilt	0.080	0.045	0.125		Right Tilt	0.148	0.045	0.193

Table 10.8 Simultaneous Transmission Summation for Held to Ear GPRS with 5.3 GHz W-LAN

**SAR for Simultaneous Transmission(Continued)**

Simult TX	Configuration	GSM850 SAR (W/kg)	5.5G W-LAN (802.11a) SAR (W/kg)	Σ SAR (W/kg)	Simult TX	Configuration	PCS1900 SAR (W/kg)	5.5G W-LAN (802.11a) SAR (W/kg)	Σ SAR (W/kg)
Head SAR	Left Touch	0.195	0.096	0.291	Head SAR	Left Touch	0.326	0.096	0.422
	Right Touch	0.128	0.030	0.158		Right Touch	0.226	0.030	0.256
	Left Tilt	0.104	0.067	0.171		Left Tilt	0.115	0.067	0.182
	Right Tilt	0.070	0.033	0.103		Right Tilt	0.084	0.033	0.117
Simult TX	Configuration	WCDMA 850 SAR (W/kg)	5.5G W-LAN (802.11a) SAR (W/kg)	Σ SAR (W/kg)					
Head SAR	Left Touch	0.211	0.096	0.307					
	Right Touch	0.154	0.030	0.184					
	Left Tilt	0.096	0.067	0.163					
	Right Tilt	0.077	0.033	0.110					

Table 10.9 Simultaneous Transmission Summation for Held to Ear Voice Call with 5.5 GHz W-LAN

Simult TX	Configuration	GSM850 GPRS SAR (W/kg)	5.5G W-LAN (802.11a) SAR (W/kg)	Σ SAR (W/kg)	Simult TX	Configuration	PCS1900 GPRS SAR (W/kg)	5.5G W-LAN (802.11a) SAR (W/kg)	Σ SAR (W/kg)
Head SAR	Left Touch	0.261	0.096	0.357	Head SAR	Left Touch	0.652	0.096	0.748
	Right Touch	0.177	0.030	0.207		Right Touch	0.468	0.030	0.498
	Left Tilt	0.130	0.067	0.197		Left Tilt	0.252	0.067	0.319
	Right Tilt	0.080	0.033	0.113		Right Tilt	0.148	0.033	0.181

Table 10.10 Simultaneous Transmission Summation for Held to Ear GPRS with 5.5 GHz W-LAN

Simult TX	Configuration	GSM850 SAR (W/kg)	2.4G W-LAN (802.11b) SAR (W/kg)	Σ SAR (W/kg)	Simult TX	Configuration	PCS1900 SAR (W/kg)	2.4G W-LAN (802.11b) SAR (W/kg)	Σ SAR (W/kg)
Body SAR	Rear	0.572	0.280	0.852	Body SAR	Rear	1.030	0.280	1.310
Simult TX	Configuration	WCDMA 850 SAR (W/kg)	2.4G W-LAN (802.11b) SAR (W/kg)	Σ SAR (W/kg)					
Body SAR	Rear	0.427	0.280	0.707					

Table 10.11 Simultaneous Transmission Body-Worn With 2.4 GHz W-LAN – 1.0 cm

Simult TX	Configuration	GSM850 SAR (W/kg)	5.8G W-LAN (802.11a) SAR (W/kg)	Σ SAR (W/kg)	Simult TX	Configuration	PCS1900 SAR (W/kg)	5.8G W-LAN (802.11a) SAR (W/kg)	Σ SAR (W/kg)
Body SAR	Rear	0.572	0.043	0.615	Body SAR	Rear	1.030	0.043	1.073
Simult TX	Configuration	WCDMA 850 SAR (W/kg)	5.8G W-LAN (802.11a) SAR (W/kg)	Σ SAR (W/kg)					
Body SAR	Rear	0.427	0.043	0.470					

Table 10.12 Simultaneous Transmission Body-Worn With 5.8 GHz W-LAN – 1.0 cm



**SAR for Simultaneous Transmission(Continued)**

Simult TX	Configuration	GSM850 SAR (W/kg)	5.2G W-LAN (802.11a) SAR (W/kg)	$\Sigma$ SAR (W/kg)	Simult TX	Configuration	PCS1900 SAR (W/kg)	5.2G W-LAN (802.11a) SAR (W/kg)	$\Sigma$ SAR (W/kg)
Body SAR	Rear	0.572	0.143	0.715	Body SAR	Rear	1.030	0.143	1.173
Simult TX	Configuration	WCDMA 850 SAR (W/kg)	5.2G W-LAN (802.11a) SAR (W/kg)	$\Sigma$ SAR (W/kg)					
Body SAR	Rear	0.427	0.143	0.570					

Table 10.13 Simultaneous Transmission Body-Worn With 5.2 GHz W-LAN – 1.0 cm

Simult TX	Configuration	GSM850 SAR (W/kg)	5.3G W-LAN (802.11a) SAR (W/kg)	$\Sigma$ SAR (W/kg)	Simult TX	Configuration	PCS1900 SAR (W/kg)	5.3G W-LAN (802.11a) SAR (W/kg)	$\Sigma$ SAR (W/kg)
Body SAR	Rear	0.572	0.246	0.818	Body SAR	Rear	1.030	0.246	1.276
Simult TX	Configuration	WCDMA 850 SAR (W/kg)	5.3G W-LAN (802.11a) SAR (W/kg)	$\Sigma$ SAR (W/kg)					
Body SAR	Rear	0.427	0.246	0.673					

Table 10.14 Simultaneous Transmission Body-Worn With 5.3 GHz W-LAN – 1.0 cm

Simult TX	Configuration	GSM850 SAR (W/kg)	5.5G W-LAN (802.11a) SAR (W/kg)	$\Sigma$ SAR (W/kg)	Simult TX	Configuration	PCS1900 SAR (W/kg)	5.5G W-LAN (802.11a) SAR (W/kg)	$\Sigma$ SAR (W/kg)
Body SAR	Rear	0.572	0.116	0.688	Body SAR	Rear	1.030	0.116	1.146
Simult TX	Configuration	WCDMA 850 SAR (W/kg)	5.5G W-LAN (802.11a) SAR (W/kg)	$\Sigma$ SAR (W/kg)					
Body SAR	Rear	0.427	0.116	0.543					

Table 10.15 Simultaneous Transmission Body-Worn With 5.5 GHz W-LAN – 1.0 cm

**SAR for Simultaneous Transmission(Continued)**

Simult TX	Configuration	GSM850 SAR (W/kg)	2.4G W-LAN (802.11b) SAR (W/kg)	$\Sigma$ SAR (W/kg)	Simult TX	Configuration	PCS1900 SAR (W/kg)	2.4G W-LAN (802.11b) SAR (W/kg)	$\Sigma$ SAR (W/kg)
Body SAR	Top	-	0.038	0.038	Body SAR	Top	-	0.038	0.038
	Bottom	0.146	-	0.146		Bottom	0.535	-	0.535
	Front	0.333	0.049	0.382		Front	0.679	0.049	0.728
	Rear	0.572	0.280	0.852		Rear	1.030	0.280	1.310
	Right	-	0.176	0.176		Right	-	0.176	0.176
	Left	0.434	-	0.434		Left	0.496	-	0.496
Simult TX	Configuration	WCDMA 850 SAR (W/kg)	2.4G W-LAN (802.11b) SAR (W/kg)	$\Sigma$ SAR (W/kg)					
Body SAR	Top	-	0.038	0.038					
	Bottom	0.133	-	0.133					
	Front	0.309	0.049	0.358					
	Rear	0.427	0.280	0.707					
	Right	-	0.176	0.176					
	Left	0.385	-	0.385					

Table 10.16 Simultaneous Transmission With 2.4 GHz W-LAN Hotspot – 1.0 cm

Note1 : “-”, SAR results above shown in the table are zero for summation purposes. SAR was not required to be measured due to exclusions mentioned in Section “13.1 SAR Test Configuration”.

Note2 : Body-Worn SAR : The Rear side hotspot SAR test configurations can be considered for body-worn accessory SAR. Although body-worn accessory conditions are typically for voice configurations, the GPRS slot frame averaged output power was more conservative and was included for the body-worn accessory SAR assessment.

The above numerical summed SAR was below the SAR limit. Therefore, the above analysis is sufficient to determine that simultaneous transmission cases will not exceed the SAR limit. Therefore, no volumetric SAR summation is required per FCC KDB Publication 648474.



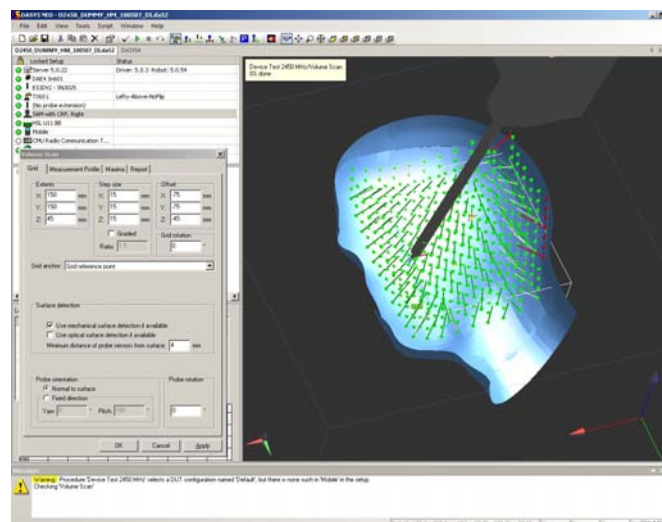
## 10.2 Description of Volume Scan

In order to determine the EM field distribution in a three-dimensional spatial extension, volume scans are required. In free space, these assessments can help to gain more information on the performance of the DUT (e.g., to determine the degree of symmetry of the field radiated from a horn antenna).

For dosimetric application, it is necessary to assess the peak spatial SAR value averaged over a volume. For this purpose, fine resolution volume scans need to be performed at the peak SAR location(s) determined during the Area Scan. In DASYS4 software these scans are called Zoom Scan jobs. The default Zoom Scan measures 7 x 7 x 7 points with a step size of 5 mm. Faster evaluations can be achieved with a reduced number of measurement points. For example, a Zoom Scan with a grid step size in x- and y-directions of 7.5 mm (5 x 5 x 7 cube configuration) reduces the measurement time to almost half with only 1-2% difference in SAR reading compared to the fine-resolution 7 x 7 x 7 scan.

For SAR evaluations with larger spatial extensions (e.g., within a complete phantom head section) a Volume Scan job should be used.

The Volume Scan job is compatible with DASYS4 SAR, PRO and NEO system levels. Volume Scans are used to assess peak SAR and averaged SAR measurement in largely extended 3-dimensional volumes within any phantom. This measurement does not need any previous area scan. The grid can be anchored to a user specific point or to the current probe location. With an Administrator access mode, the grid can be optionally graded in Z-direction, whereby the smallest grid step and the grading ratio can be defined. Chosen grading ratio is automatically adjusted so that the desired extent in Z-direction is fully covered.



Under the Report page, the quantity to be evaluated for an instant report may be selected. This quantity can be: field magnitude, SAR, interpolated SAR or averaged SAR.

## 10.3 SAR Assessment

### Alternative1

- Evaluation Method
  - Maximum summed SAR Value
- Description
  - Easiest and most conservative method to determine the upper limit of multi-band SAR
- Example
  - F1's SAR Value is 0.9
  - F2's SAR Value is 1.3
  - Multi-band SAR Value is  $0.9 + 1.3 = 2.2$

### Alternative2

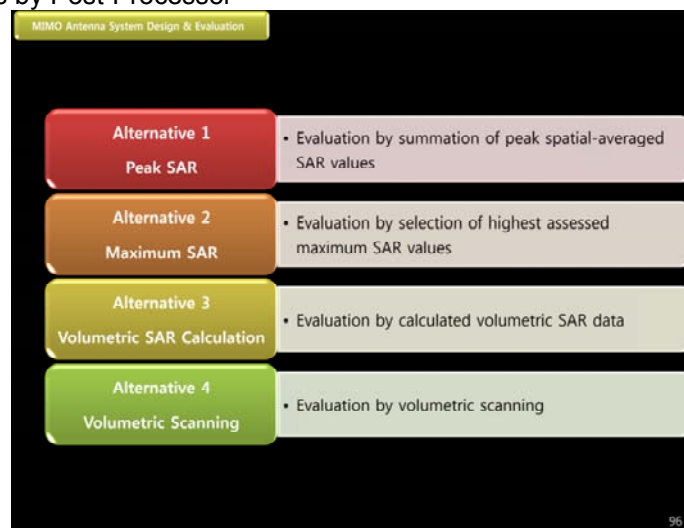
- Evaluation Method
  - Selection of highest assessed maximum SAR Value
- Description
  - Accurate estimate of the multi-band SAR
- Example
  - F1's SAR Value is 0.9
  - F2's SAR Value is 1.3
  - Multi-band SAR Value is 1.3

### Alternative3

- Evaluation Method
  - Combining existing Area and Zoom Scan results by Post-Processor
- Description
  - Rapid way of obtaining the multi-band SAR. It is always applicable.
- Example
  - F1's SAR Value is 0.9
  - F2's SAR Value is 1.3
  - Combining results by Post-Processor

### Alternative4

- Evaluation Method
  - Combining existing Area and Zoom Scan results by Post-Processor
- Description
  - The most accurate way of assessing the multi-band SAR and always applicable.
- Example
  - F1's SAR Value is 0.9
  - F2's SAR Value is 1.3
  - Combining results by Post-Processor



# 11. Configuring 802.11 a/b/g Transmitters for SAR Measurement

## SAR Testing with IEEE 802.11 a/b/g Transmitters

Per KDB publication 248227, normal network operating configurations are not suitable for measuring the SAR of 802.11 a/b/g/n transmitters. Unpredictable fluctuations in network traffic and antenna diversity conditions can introduce undesirable variations in SAR results. The SAR for these devices should be measured using chipset based test mode software to ensure the results are consistent and reliable. See KDB Publication 248227 for more details.

## General Device Setup

Chipset based test mode software is hardware dependent and generally varies among manufacturers. The device operating parameters established in test mode for SAR measurements must be identical to those programmed in production units, including output power levels, amplifier gain settings and other RF performance tuning parameters. The test frequencies should correspond to actual channel frequencies defined for domestic use. SAR for devices with switched diversity should be measured with only one antenna transmitting at a time during each SAR measurement, according to a fixed modulation and data rate. The same data pattern should be used for all measurements.

## Frequency Channel Configurations

802.11 a/b/g/n operating modes are tested independently according to the service requirements in each frequency band. 802.11 b/g/n modes are tested on channels 1, 6 and 11. 802.11a is tested for UNII operations on channels 36 and 48 in the 5.15-5.25 GHz band; channels 52 and 64 in the 5.25-5.35 GHz band; channels 104, 116 and 136 in the 5.470-5.725 GHz band; and channels 149 and 161 in the 5.8 GHz band. When 5.8 GHz §15.247 is also available, channels 149, 157 and 165 should be tested instead of the UNII channels. These are referred to as the “default test channels”. For 2.4 GHz, 802.11g/n modes were evaluated only if the output power was 0.25 dB higher than the 802.11b mode. For 5 GHz, 802.11n modes were evaluated only if the output power was 0.25 dB higher than the 802.11a mode. When the maximum extrapolated peak SAR of the zoom scan for the maximum output channel is <1.6 W/kg and the 1g averaged SAR is <0.8 W/kg, SAR testing on other channels is not required. Otherwise, the other default (or corresponding required) test channels were additionally tested using the lowest data rate.

Table 11.1 802.11 Test channels per FCC Requirements

Mode	GHz	Channel	Turbo Channel	“Default Test Channels”				
				§15.247		UNII		
				802.11b	802.11g			
802.11 b/g	2.412	1*		√	∇			
	2.437	6	6	√	∇			
	2.462	11*		√	∇			
802.11a	5.18	36				√		
	5.20	40	42 (5.21 GHz)				*	
	5.22	44					*	
	5.24	48	50 (5.25 GHz)			√		
	5.26	52				√		
	5.28	56	58 (5.29 GHz)				*	
	5.30	60					*	
	5.32	64				√		
		5.500	100	Unknown				*
		5.520	104				√	*
		5.540	108					*
		5.560	112					*
		5.580	116				√	*
		5.600	120					*
		5.620	124				√	*
		5.640	128					*
		5.660	132					*
		5.680	136				√	*
		5.700	140				*	
		5.745	149		√		√	
	5.765	153	152 (5.76 GHz)		*		*	
	5.785	157		√			*	
	5.805	161	160 (5.80 GHz)		*	√		
	§15.247	5.825	165	√				

## **12. SAR Measurement Conditions for UMTS**

The following procedures were followed according to FCC "SAR Measurement Procedures for 3G Devices v02", Oct 2007.

### **Output Power Verification**

Maximum output power is verified on the High, Middle and Low channels according to the procedures described in section 5.2 of 3GPP TS 34.121, using the appropriate RMC or AMR with TPC (transmit power control) set to all "1's" for WCDMA/HSDPA or applying the required inner loop power control procedures to maintain maximum output power while HSUPA is active. Results for all applicable physical channel configurations (DPCCH, DPDCHn and spreading codes, HSDPA, HSPA) should be tabulated in the SAR report. All configurations that are not supported by the DUT or cannot be measured due to technical or equipment limitations should be clearly identified.

### **Head SAR Measurements**

SAR for head exposure configurations in voice mode is measured using a 12.2 kbps RMC with TPC bits configured to all "1's". SAR in AMR configurations is not required when the maximum average output of each RF channel for 12.2 kbps AMR is less than ¼ dB higher than that measured in 12.2 kbps RMC. Otherwise, SAR is measured on the maximum output channel in 12.2 kbps AMR with a 3.4 kbps SRB (signaling radio bearer) using the exposure configuration that results in the highest SAR in 12.2 kbps RMC for that RF channel.

### **Body SAR Measurements**

SAR for body exposure configurations in voice and data modes is measured using a 12.2 kbps RMC with TPC bits configured to all "1's". SAR for other spreading codes and multiple DPDCHn, when supported by the DUT, are not required when the maximum average output of each RF channel, for each spreading code and DPDCHn configuration, are less than ¼ dB higher than those measured in 12.2 kbps RMC. Otherwise, SAR is measured on the maximum output channel with an applicable RMC configuration for the corresponding spreading code or DPDCHn using the exposure configuration that results in the highest SAR with 12.2 kbps RMC. When more than 2 DPDCHn are supported by the DUT, it may be necessary to configure additional DPDCHn for a DUT using FTM (Factory Test Mode) or other chipset based test approaches with parameters similar to those used in 384 kbps and 768 kbps RMC.

### **Handsets with Release 5 HSDPA**

Body SAR is not required for handsets with HSDPA capabilities when the maximum average output of each RF channel with HSDPA active is less than ¼ dB higher than that measured without HSDPA using 12.2 kbps RMC and the maximum SAR for 12.2 kbps RMC is  $\leq 75\%$  of the SAR limit. Otherwise, SAR is measured for HSDPA, using the additional body SAR procedures in the "Release 5 HSDPA Data Devices" section of this document, on the maximum output channel with the body exposure configuration that results in the highest SAR in 12.2 kbps RMC for that RF channel. Handsets with both HSDPA and HSUPA should be tested according to Release 6 HSPA test procedures.

### **Handsets with Release 6 HSPA (HSDPA/HSUPA)**

Body SAR is not required for handsets with HSPA capabilities when the maximum average output of each RF channel with HSUPA/HSDPA active is less than ¼ dB higher than that measured without HSUPA/HSDPA using 12.2 kbps RMC and the maximum SAR for 12.2 kbps RMC is  $\leq 75\%$  of the SAR limit. Otherwise, SAR is measured for HSPA using the additional body SAR procedures in the "Release 6 HSPA Data Devices" section of this document, on the maximum output channel with the body exposure configuration that results in the highest SAR in 12.2 kbps RMC for that RF channel. When VOIP is applicable for head exposure in HSPA, SAR is not required when the maximum output of each RF channel with HSPA is less than ¼ dB higher than that measured using 12.2 kbps RMC; otherwise, the same HSPA configuration used for body measurements should be tested for head exposure.

### 13. SAR CONSIDERATIONS

#### 13.1 SAR Test Configurations

See Figure 13.1 for EUT antenna locations to determine the wireless router edges required for SAR testing based on FCC KDB 941225 D06. Certain EUT edges were not required to be evaluated for Wireless Router SAR if the transmitting antenna was greater than 2.5 cm from the edge of the device to be considered for RF exposure evaluation.

Mode	Mobile Hotspot Sides for SAR Testing					
	Top	Bottom	Front	Rear	Right	Left
GSM850	X	O	O	O	X	O
PCS1900	X	O	O	O	X	O
WCDMA850	X	O	O	O	X	O
2.4G W-LAN(802.11b/g/n)	O	X	O	O	O	X

Table 13.1 Mobile Hotspot Sides for SAR Testing

Note : When Hotspot is enabled, all 5 GHz bands are disabled.

#### 13.2 Antenna Distance

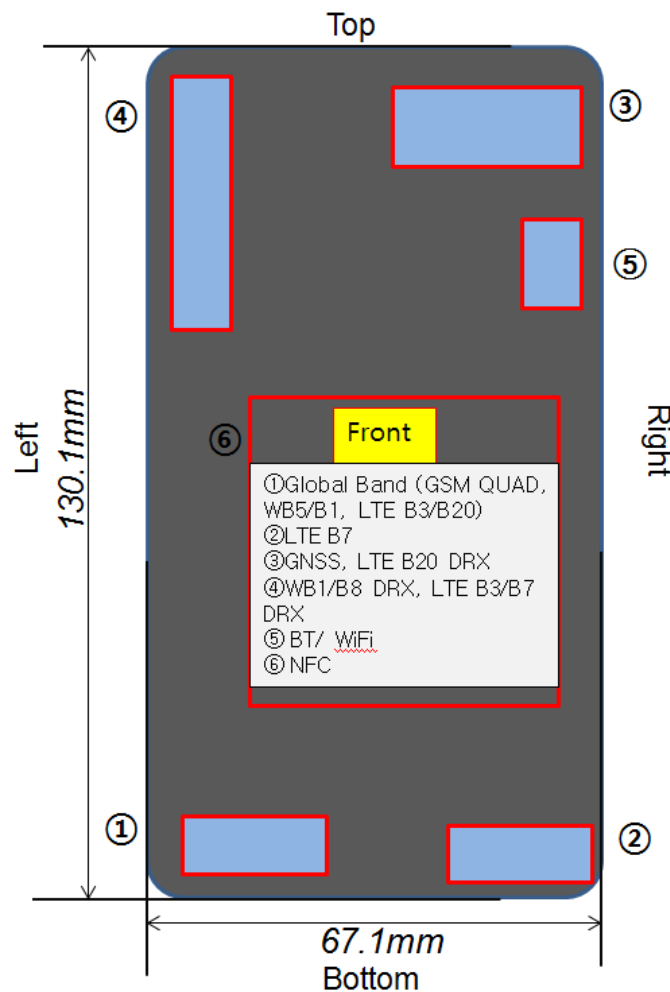


Figure 13.1 Identification of Sides for SAR Testing (Front Side View)

Note: Please refer to submitted [Antenna Distance ZNFE975K.pdf](#) for more detailed antenna distance information.

## 14. SAR TEST SUMMARY AND POWER TABLE

### See Measurement Result Data Pages

#### Procedures Used To Establish Test Signal

The EUT was placed into simulated call mode (GSM850, PCS1900, WCDMA850 and W-LAN (802.11a/b)) using manufacturers test codes. Such test signals offer a consistent means for testing SAR and are recommended for evaluating SAR. When test modes are not available or inappropriate for testing a EUT, the actual transmission is activated through a base station simulator or similar equipment. See data pages for actual procedure used in measurement.

Also this EUT was tested WLAN test program to control DUT. The channel was selected at Low, Middle, and High channel. The output power level was set to rated max output power using the WLAN test program. This output power level was measured and recorded on the report as a begin power.

#### Device Test Conditions

The EUT is battery operated. Each SAR measurement was taken with a fully charged battery.

In order to verify that the device was tested at full power, conducted output power measurements were performed before and after each SAR measurement to confirm the output power. If a conducted power deviation of more than 5% occurred, the test was repeated.

#### Max. Burst-Averaged Output Power Table for LG-E975k (GSM)

Band	Channel	Test Result(dBm)								
		Voice	GPRS/EDGE (GMSK) Data				EDGE(8-PSK) Data			
		GSM CS 1 Slot	GPRS 1 TX Slot	GPRS 2 TX Slot	GPRS 3 TX Slot	GPRS 4 TX Slot	EDGE 1TX Slot	EDGE 2TX Slot	EDGE 3TX Slot	EDGE 4TX Slot
GSM 850	128	33.4	33.3	31.5	29.5	27.5	27.4	25.5	23.5	21.4
	190	33.5	33.5	31.5	29.5	27.5	27.3	25.5	23.4	21.4
	251	33.3	33.3	31.2	29.5	27.3	27.3	25.4	23.4	21.3
PCS 1900	512	30.5	30.5	28.5	28.5	26.5	26.3	24.2	22.2	22.3
	661	30.5	30.5	28.5	28.5	26.5	26.4	24.3	22.3	22.3
	810	30.4	30.4	28.5	28.5	26.5	26.5	24.3	22.1	22.1

Table 14.1 The power was measured by E5515C

#### Calculated Max Frame-Averaged Output Table for LG-E975k (GSM)

Band	Channel	Test Result(dBm)								
		Voice	GPRS/EDGE (GMSK) Data				EDGE(8-PSK) Data			
		GSM CS 1 Slot	GPRS 1 TX Slot	GPRS 2 TX Slot	GPRS 3 TX Slot	GPRS 4 TX Slot	EDGE 1TX Slot	EDGE 2TX Slot	EDGE 3TX Slot	EDGE 4TX Slot
GSM 850	128	24.37	24.27	25.48	25.24	24.49	18.37	19.48	19.24	18.39
	190	24.47	24.47	25.48	25.24	24.49	18.27	19.48	19.14	18.39
	251	24.27	24.27	25.18	25.24	24.29	18.27	19.38	19.14	18.29
PCS 1900	512	21.47	21.47	22.48	24.24	23.49	17.27	18.18	17.94	19.29
	661	21.47	21.47	22.48	24.24	23.49	17.37	18.28	18.04	19.29
	810	21.37	21.37	22.48	24.24	23.49	17.47	18.28	17.84	19.09

#### Notes:

- Both burst-averaged and calculated frame-averaged powers are included. Frame-averaged power was calculated from the measured burst-averaged power by converting the slot powers into linear units and calculating the energy over 8 timeslots.
- The bolded GPRS modes were selected according to the highest frame-averaged output power table according to KDB 941225 D03.
- GPRS(GMSK) output powers were measured with CS1. EDGE (8-PSK) powers were measured with MCS5.

GSM Class: B

GPRS Multislot class: 12 (max 4 TX Uplink slots)

EDGE Multislot class: 12 (max 4 TX Uplink slots)

DTM Multislot Class: N/A

**Max. Power Output Table for LG-E975k (WCDMA - HSDPA)**

3GPP Release Version	Mode		Power (dBm)			MPR	B <sub>c</sub>	β <sub>d</sub>	B <sub>c</sub> /β <sub>d</sub>	Sub-Test
	Channel		4132	4183	4233					
99	WCDMA	RMC	22.93	22.95	22.81	-	-	-	-	-
		ARM	22.92	22.93	22.81	-	-	-	-	-
5	HSDPA (Cellular)		22.90	22.91	22.79	0	2/15	15/15	2/15	1
5			22.86	22.91	22.77	0	12/15	15/15	12/15	2
5			22.43	22.44	22.32	0.5	15/15	8/15	15/8	3
5			22.31	22.32	22.22	0.5	15/15	4/15	15/4	4
-	Channel		<b>9262</b>	<b>9400</b>	<b>9538</b>	-	-	-	-	-
99	WCDMA	RMC	N/A	N/A	N/A	-	-	-	-	-
		ARM	N/A	N/A	N/A	-	-	-	-	-
5	HSDPA (PCS)		N/A	N/A	N/A	0	2/15	15/15	2/15	1
5			N/A	N/A	N/A	0	12/15	15/15	12/15	2
5			N/A	N/A	N/A	0.5	15/15	8/15	15/8	3
5			N/A	N/A	N/A	0.5	15/15	4/15	15/4	4

Table 14.2 The power was measured E5515C

**Max. Power Output Table for LG-E975k (WCDMA - HSUPA)**

3GPP Release Version	Mode		Power (dBm)			MPR	B <sub>c</sub>	β <sub>d</sub>	B <sub>c</sub> /β <sub>d</sub>	Sub-Test
	Channel		4132	4183	4233					
6	HSUPA (Cellular)		22.89	22.90	22.74	0	11/15	15/15	11/15	1
6			20.82	20.83	20.67	2	6/15	15/15	6/15	2
6			21.79	21.79	21.71	1	15/15	9/15	15/9	3
6			20.78	20.81	20.63	2	2/15	15/15	2/15	4
6			22.88	22.89	22.72	0	15/15	15/15	15/15	5
-	Channel		<b>9262</b>	<b>9400</b>	<b>9538</b>	-	-	-	-	-
6	HSUPA (PCS)		N/A	N/A	N/A	0	11/15	15/15	11/15	1
6			N/A	N/A	N/A	2	6/15	15/15	6/15	2
6			N/A	N/A	N/A	1	15/15	9/15	15/9	3
6			N/A	N/A	N/A	2	2/15	15/15	2/15	4
6			N/A	N/A	N/A	0	15/15	15/15	15/15	5

Table 14.3 The power was measured E5515C

**GSM and WCDMA Power Measurement Setup**





**Max. Power Output Table for LG-E975k (2.4G W-LAN)**

Band	Channel	Conducted Power (dBm)			
		Data Rate (Mbps)			
		1	2	5.5	11
802.11b	1	16.76	16.44	16.55	16.59
	6	16.72	16.52	16.61	16.69
	11	<b>17.57</b>	17.26	17.41	17.42

Band	Channel	Conducted Power (dBm)							
		Data Rate (Mbps)							
		6	9	12	18	24	36	48	54
802.11g	1	11.68	11.43	11.39	11.37	11.26	10.82	10.73	10.42
	6	12.50	12.19	11.88	11.73	11.69	11.15	11.02	10.87
	11	13.11	13.06	13.01	12.99	12.85	12.76	12.34	12.22

Band	Channel	Conducted Power (dBm)							
		Data Rate (Mbps)							
		6.5	13	19.5	26	39	52	58.5	65
802.11n (HT-20)	1	10.56	10.32	10.12	10.02	9.98	9.77	9.43	9.28
	6	10.64	10.32	10.27	10.17	10.11	9.87	9.66	9.57
	11	12.01	11.84	11.67	11.62	11.58	11.53	11.38	11.13

Table 14.4 The power was measured by the Average Power Meter

**Max. Power Output Table for LG-E975k (5 G W-LAN)**

Mode	Freq [MHz]	Channel	conducted Power [dBm]							
			Data Rate [Mbps]							
			6	9	12	18	24	36	48	54
802.11a	5180	36	<b>12.23</b>	12.21	12.17	12.05	11.92	11.63	11.34	11.22
	5200	40	12.16	12.13	12.05	11.94	11.76	11.52	11.30	11.14
	5240	48	12.15	12.07	12.01	11.83	11.73	11.55	11.37	11.25
	5260	52	<b>12.67</b>	12.52	12.43	12.35	12.06	11.82	11.41	11.16
	5300	60	12.21	12.05	11.98	11.86	11.64	11.43	11.13	10.87
	5320	64	12.40	12.23	12.16	12.04	11.82	11.61	11.30	11.05
	5500	100	13.10	12.95	12.80	12.51	12.24	11.89	11.64	11.43
	5580	116	<b>13.78</b>	13.64	13.47	13.16	12.89	12.59	12.38	12.21
	5700	140	13.35	13.19	13.05	12.76	12.49	12.15	11.89	11.75
	5745	149	13.11	13.05	13.03	12.93	12.76	12.09	11.81	11.72
	5785	157	<b>13.12</b>	13.01	12.86	12.8	12.45	11.84	11.65	11.48
	5825	165	12.66	12.51	12.57	12.02	11.53	11.34	11.15	11.02



Mode	Freq [MHz]	Channel	conducted Power [dBm] 20M Bandwidth							
			Data Rate [Mbps]							
			6.5	13	19.5	26	39	52	58.5	65
802.11n	5180	36	8.15	8.03	7.98	7.72	7.40	7.26	6.89	6.60
	5200	40	8.21	8.04	7.81	7.58	7.24	7.09	6.72	6.69
	5240	48	8.12	7.94	7.85	7.33	6.94	6.44	6.28	6.17
	5260	52	8.00	7.92	7.78	7.66	7.32	6.92	6.78	6.62
	5300	60	8.25	8.17	8.12	8.03	7.75	7.32	7.19	7.05
	5320	64	8.14	8.06	8.01	7.94	7.75	7.33	7.22	7.05
	5500	100	8.76	8.56	8.37	8.13	7.82	7.43	7.21	7.13
	5580	116	9.58	9.39	9.24	9.08	8.89	8.58	8.42	8.31
	5700	140	8.96	8.78	8.63	8.51	8.35	8.13	7.99	7.85
	5745	149	8.71	8.41	8.24	8.02	7.56	7.33	7.24	7.15
	5785	157	9.21	8.94	8.71	8.45	8.14	7.58	7.41	7.33
5825	165	8.65	8.34	8.09	7.83	7.36	7.27	7.15	7.02	

Mode	Freq [MHz]	Channel	conducted Power [dBm] 40MHz Bandwidth							
			Data Rate [Mbps]							
			13.5/15	27/30	40.5/45	54/60	81/90	108/120	121.5 /135	135/150
802.11n	5190	38	6.79	6.41	6.28	6.11	5.73	5.56	5.41	5.33
	5230	46	6.54	6.45	6.37	6.19	5.72	5.44	5.40	5.27
	5270	54	6.75	6.22	6.20	5.83	5.57	5.43	5.12	5.04
	5310	62	6.50	6.32	6.16	6.04	5.80	5.67	5.41	5.35
	5510	102	7.69	7.45	7.22	6.96	6.73	6.44	6.22	6.13
	5550	110	7.38	7.24	7.04	6.80	6.67	6.51	6.32	6.23
	5670	134	7.02	6.89	6.72	6.55	6.42	6.29	6.12	6.05
	5755	151	7.70	7.52	7.03	7.02	6.89	6.48	6.33	6.31
	5795	159	7.23	7.04	6.67	6.63	6.4	6.11	5.89	5.77

Table 14.5 The power was measured by the Average Power Meter & Spectrum Analyzer

**Max. Power Output Table for LG-E975k (Bluetooth)**

channel	Frequency	Output Power(1Mbps)		Output power (2Mbps)		Output power (3Mbps)	
	(MHz)	(dBm)	(mW)	(dBm)	(mW)	(dBm)	(mW)
Low	2402	5.27	3.365	3.79	2.393	3.81	2.404
Mid	2441	6.73	4.710	5.17	3.289	5.18	3.296
High	2480	5.93	3.917	4.30	2.692	4.51	2.825

Table 14.6 The power was measured by the Average Power Meter

**Max. Power Output Table for LG-E975k (Bluetooth - LE)**

channel	Frequency	Output Power(LE)	
	(MHz)	(dBm)	(mW)
Low	2402	3.52	2.249
Mid	2441	5.93	3.917
High	2480	4.42	2.767

Table 14.7 The power was measured by the Average Power Meter

**W-LAN Notes**

Note 1: Justification for reduced test configurations for WIFI channels per KDB Publication 248227 and April 2010

FCC/TCB Meeting Notes:

- For 2.4 GHz, highest average RF output power channel for the lowest data rate for IEEE 802.11b were selected for SAR evaluation. Other IEEE 802.11 modes (including 802.11g/n) were not investigated since the average output powers over all channels and data rates were not more than 0.25 dB higher than the tested channel in the lowest data rate of IEEE 802.11b mode.
- For 5 GHz, highest average RF output power channel for the lowest data rate for IEEE 802.11a were selected for SAR evaluation. Other IEEE 802.11 modes (including 802.11n) were not investigated since the average output powers over all channels and data rates were not more than 0.25 dB higher than the tested channel in the lowest data rate of IEEE 802.11a mode.
- When the maximum extrapolated peak SAR of the zoom scan for the maximum output channel is <math><1.6\text{ W/kg}</math> and the 1g averaged SAR is <math><0.8\text{ W/kg}</math>, SAR testing on other channels is not required. Otherwise, the other default (or corresponding required) test channels were additionally tested using the lowest data rate.
- The underlined data rate and channel above were tested for SAR.

Note 2 : Per FCC KDB Publication 443999 and RSS-210 A9.2(3), transmission on channels which overlap the 5600-5650 MHz is prohibited as a client. This device does not transmit any beacons or initiate any transmissions in 5.3 and 5.5 GHz Band. – indicates default channels per KDB Publication 248227. When the adjacent channels are higher in power than the default channels, these “required channels” are considered instead of the default channels for SAR testing.

Note 3 : UNII Bands(5180 MHz ~ 5700 MHz) were tested by spectrum analyzer. Please refer to the Test Report(NII) for determine the detailed power. Also 2.4 GHz W-LAN and 5.8 GHz Band W-LAN were tested by average power meter.

**W-LAN and Bluetooth Power Measurement Setup**

## 15. SAR TEST DATA RESULTS

### 15.1 Measurement Results (GSM850 Head SAR)

FREQUENCY		Modulation	Begin Power (dBm)	Drift Power (dB)	Battery	Phantom Position	Antenna Type	SAR (W/kg)
MHz	Ch							
836.6	190(Mid)	GSM850	33.5	0.020	Standard	Left Touch	Internal	0.195
836.6	190(Mid)	GSM850	33.5	0.100	Standard	Right Touch	Internal	0.128
836.6	190(Mid)	GSM850	33.5	-0.100	Standard	Left Tilt 15°	Internal	0.104
836.6	190(Mid)	GSM850	33.5	-0.060	Standard	Right Tilt 15°	Internal	0.070
<b>ANSI / IEEE C95.1-2005– SAFETY LIMIT Spatial Peak Uncontrolled Exposure/General Population Exposure</b>						<b>Head 1.6 W/kg (mW/g) averaged over 1 gram</b>		

NOTE:

- The test data reported are the worst-case SAR value with the antenna-head position set in a typical configuration. Test procedures used are according to FCC/OET Bulletin 65, Supp.C [July 2001].
- All modes of operation were investigated, and worst-case results are reported.
- Prior to testing the conducted output power was measured.
- The EUT is tested 2<sup>nd</sup> hot-spot peak, if it is less than 2dB below the highest peak.
- Test Signal Call Mode       Continuous Tx On       Manu. Test Codes       Base Station Simulator
- Tissue parameters and temperatures are listed on the SAR plots.
- Liquid tissue depth is 15.0cm.±0.1. To confirm the proper SAR liquid depth, the z-axis plots from the system verifications were included since the system verifications were performed using the same liquid, probe and DAE as the SAR tests in the same time period.
- Justification for reduced test configurations: per FCC/OET Supplement C (July, 2001), if the SAR measured at the middle channel for each test configuration (Left, right, cheek/touch, tilt/ear, extended and retracted) is at least 3.0 dB lower than the SAR limit, testing at the high and low channels is optional for such test configuration(s).

**15.2 Measurement Results (GSM850 GPRS Head SAR)**

FREQUENCY		Modulation	Begin Power (dBm)	Drift Power (dB)	Battery	Phantom Position	Antenna Type	SAR (W/kg)
MHz	Ch							
836.6	190(Mid)	GPRS 1 Tx	33.5	0.060	Standard	Left Touch	Internal	0.216
836.6	190(Mid)	GPRS 2 Tx	31.5	0.070	Standard	Left Touch	Internal	0.261
836.6	190(Mid)	GPRS 3 Tx	29.5	0.190	Standard	Left Touch	Internal	0.250
836.6	190(Mid)	GPRS 4 Tx	27.5	-0.160	Standard	Left Touch	Internal	0.158
836.6	190(Mid)	GPRS 2 Tx	31.5	0.070	Standard	Right Touch	Internal	0.177
836.6	190(Mid)	GPRS 2 Tx	31.5	-0.190	Standard	Left Tilt 15°	Internal	0.130
836.6	190(Mid)	GPRS 2 Tx	31.5	0.120	Standard	Right Tilt 15°	Internal	0.080
<b>ANSI / IEEE C95.1-2005– SAFETY LIMIT Spatial Peak Uncontrolled Exposure/General Population Exposure</b>						<b>Head 1.6 W/kg (mW/g) averaged over 1 gram</b>		

## NOTE:

- The test data reported are the worst-case SAR value with the antenna-head position set in a typical configuration. Test procedures used are according to FCC/OET Bulletin 65, Supp.C [July 2001].
- All modes of operation were investigated, and worst-case results are reported.
- Prior to testing the conducted output power was measured.
- The EUT is tested 2<sup>nd</sup> hot-spot peak, if it is less than 2dB below the highest peak.
- Test Signal Call Mode       Continuous Tx On       Manu. Test Codes       Base Station Simulator
- Tissue parameters and temperatures are listed on the SAR plots.
- Liquid tissue depth is 15.0cm.±0.1. To confirm the proper SAR liquid depth, the z-axis plots from the system verifications were included since the system verifications were performed using the same liquid, probe and DAE as the SAR tests in the same time period.
- Justification for reduced test configurations: per FCC/OET Supplement C (July, 2001), if the SAR measured at the middle channel for each test configuration (Left, right, cheek/touch, tilt/ear, extended and retracted) is at least 3.0 dB lower than the SAR limit, testing at the high and low channels is optional for such test configuration(s).
- It was tested on GPRS because VoIP supported.

**15.3 Measurement Results (PCS1900 Head SAR)**

FREQUENCY		Modulation	Begin Power (dBm)	Drift Power (dB)	Battery	Phantom Position	Antenna Type	SAR (W/kg)
MHz	Ch							
1880.0	661(Mid)	PCS1900	30.5	-0.070	Standard	Left Touch	Internal	0.326
1880.0	661(Mid)	PCS1900	30.5	0.190	Standard	Right Touch	Internal	0.226
1880.0	661(Mid)	PCS1900	30.5	-0.080	Standard	Left Tilt 15°	Internal	0.115
1880.0	661(Mid)	PCS1900	30.5	0.030	Standard	Right Tilt 15°	Internal	0.084
<b>ANSI / IEEE C95.1-2005– SAFETY LIMIT Spatial Peak Uncontrolled Exposure/General Population Exposure</b>						<b>Head 1.6 W/kg (mW/g) averaged over 1 gram</b>		

## NOTE:

- The test data reported are the worst-case SAR value with the antenna-head position set in a typical configuration. Test procedures used are according to FCC/OET Bulletin 65, Supp.C [July 2001].
- All modes of operation were investigated, and worst-case results are reported.
- Prior to testing the conducted output power was measured.
- The EUT is tested 2<sup>nd</sup> hot-spot peak, if it is less than 2dB below the highest peak.
- Test Signal Call Mode       Continuous Tx On       Manu. Test Codes       Base Station Simulator
- Tissue parameters and temperatures are listed on the SAR plots.
- Liquid tissue depth is 15.0cm.±0.1. To confirm the proper SAR liquid depth, the z-axis plots from the system verifications were included since the system verifications were performed using the same liquid, probe and DAE as the SAR tests in the same time period.
- Justification for reduced test configurations: per FCC/OET Supplement C (July, 2001), if the SAR measured at the middle channel for each test configuration (Left, right, cheek/touch, tilt/ear, extended and retracted) is at least 3.0 dB lower than the SAR limit, testing at the high and low channels is optional for such test configuration(s).

**15.4 Measurement Results (PCS1900 GPRS Head SAR)**

FREQUENCY		Modulation	Begin Power (dBm)	Drift Power (dB)	Battery	Phantom Position	Antenna Type	SAR (W/kg)
MHz	Ch							
1880.0	661(Mid)	GPRS 1 Tx	30.5	0.120	Standard	Left Touch	Internal	0.307
1880.0	661(Mid)	GPRS 2 Tx	28.5	0.070	Standard	Left Touch	Internal	0.406
1880.0	661(Mid)	GPRS 3 Tx	28.5	0.070	Standard	Left Touch	Internal	0.652
1880.0	661(Mid)	GPRS 4 Tx	26.5	-0.040	Standard	Left Touch	Internal	0.467
1880.0	661(Mid)	GPRS 3 Tx	28.5	0.170	Standard	Right Touch	Internal	0.468
1880.0	661(Mid)	GPRS 3 Tx	28.5	0.140	Standard	Left Tilt 15°	Internal	0.252
1880.0	661(Mid)	GPRS 3 Tx	28.5	0.100	Standard	Right Tilt 15°	Internal	0.148
<b>ANSI / IEEE C95.1-2005– SAFETY LIMIT Spatial Peak Uncontrolled Exposure/General Population Exposure</b>						<b>Head 1.6 W/kg (mW/g) averaged over 1 gram</b>		

## NOTE:

- The test data reported are the worst-case SAR value with the antenna-head position set in a typical configuration. Test procedures used are according to FCC/OET Bulletin 65, Supp.C [July 2001].
- All modes of operation were investigated, and worst-case results are reported.
- Prior to testing the conducted output power was measured.
- The EUT is tested 2<sup>nd</sup> hot-spot peak, if it is less than 2dB below the highest peak.
- Test Signal Call Mode  Continuous Tx On  Manu. Test Codes  Base Station Simulator
- Tissue parameters and temperatures are listed on the SAR plots.
- Liquid tissue depth is 15.0cm.±0.1. To confirm the proper SAR liquid depth, the z-axis plots from the system verifications were included since the system verifications were performed using the same liquid, probe and DAE as the SAR tests in the same time period.
- Justification for reduced test configurations: per FCC/OET Supplement C (July, 2001), if the SAR measured at the middle channel for each test configuration (Left, right, cheek/touch, tilt/ear, extended and retracted) is at least 3.0 dB lower than the SAR limit, testing at the high and low channels is optional for such test configuration(s).
- It was tested on GPRS because VoIP supported.

**15.5 Measurement Results (WCDMA 850 Head SAR)**

FREQUENCY		Modulation	Begin Power (dBm)	Drift Power (dB)	Battery	Phantom Position	Antenna Type	1g SAR (W/kg)	10g SAR (W/kg)
MHz	Ch								
836.6	4183(Mid)	WCDMA 850	22.95	0.080	Standard	Left Touch	Internal	0.211	0.161
836.6	4183(Mid)	WCDMA 850	22.95	0.020	Standard	Right Touch	Internal	0.154	0.119
836.6	4183(Mid)	WCDMA 850	22.95	-0.020	Standard	Left Tilt 15°	Internal	0.096	0.075
836.6	4183(Mid)	WCDMA 850	22.95	0.160	Standard	Right Tilt 15°	Internal	0.077	0.060
<b>ANSI / IEEE C95.1 2005 – SAFETY LIMIT</b>						<b>Head</b>			
<b>Spatial Peak</b>						<b>1.6 W/kg (mW/g)</b>			
<b>Uncontrolled Exposure/ General Population Exposure</b>						averaged over 1 gram			
<b>EN50360</b>						<b>Head</b>			
<b>RF EXPOSURE LIMITS</b>						<b>2.0W/kg (mW/g)</b>			
						Averaged over 10 gram			

## NOTE:

- The test data reported are the worst-case SAR value with the antenna-head position set in a typical configuration. Test procedures used are according to FCC/OET Bulletin 65, Supp.C [July 2001].
- All modes of operation were investigated, and worst-case results are reported.
- Prior to testing the conducted output power was measured.
- The EUT is tested 2<sup>nd</sup> hot-spot peak, if it is less than 2dB below the highest peak.
- Test Signal Call Mode       Continuous Tx On       Manu.Test Codes       BaseStation Simulator
- Tissue parameters and temperatures are listed on the SAR plots.
- Liquid tissue depth is 15.0cm.±0.1. To confirm the proper SAR liquid depth, the z-axis plots from the system verifications were included since the system verifications were performed using the same liquid, probe and DAE as the SAR tests in the same time period.
- Justification for reduced test configurations: per FCC/OET Supplement C (July, 2001), if the SAR measured at the middle channel for each test configuration (Left, right, cheek/touch, tilt/ear, extended and retracted) is at least 3.0 dB lower than the SAR limit, testing at the high and low channels is optional for such test configuration(s).
- WCDMA mode was tested under RMC 12.2 kbps configured in Test Loop Mode 1.

**15.6 Measurement Results (802.11b Head SAR)**

FREQUENCY		Modulation	Begin Power (dBm)	Drift Power (dB)	Battery	Phantom Position	Antenna Type	Data Rate	SAR (W/kg)
MHz	Ch								
2412	1(Low)	802.11b	16.76	0.020	Standard	Left Touch	Internal	1 Mbps	0.086
2437	6(Mid)	802.11b	16.72	-0.060	Standard	Left Touch	Internal	1 Mbps	0.108
2462	11(High)	802.11b	17.57	-0.040	Standard	Left Touch	Internal	1 Mbps	0.241
2462	11(High)	802.11b	17.57	-0.200	Standard	Right Touch	Internal	1 Mbps	0.160
2462	11(High)	802.11b	17.57	-0.080	Standard	Left Tilt 15°	Internal	1 Mbps	0.081
2462	11(High)	802.11b	17.57	-0.140	Standard	Right Tilt 15°	Internal	1 Mbps	0.053
<b>ANSI / IEEE C95.1 2005 – SAFETY LIMIT Spatial Peak Uncontrolled Exposure/General Population Exposure</b>						<b>Head 1.6 W/kg (mW/g) averaged over 1 gram</b>			

## NOTE:

- The test data reported are the worst-case SAR value with the antenna-head position set in a typical configuration. Test procedures used are according to FCC/OET Bulletin 65, Supp.C [July 2001].
- All modes of operation were investigated, and worst-case results are reported.
- Prior to testing the conducted output power was measured.
- The EUT is tested 2<sup>nd</sup> hot-spot peak, if it is less than 2dB below the highest peak.
- Test Signal Call Mode       Continuous Tx On       Manu. Test Codes       Base Station Simulator
- Tissue parameters and temperatures are listed on the SAR plots.
- Liquid tissue depth is 15.0cm.±0.1. To confirm the proper SAR liquid depth, the z-axis plots from the system verifications were included since the system verifications were performed using the same liquid, probe and DAE as the SAR tests in the same time period.
- Justification for reduced test configurations: per FCC/OET Supplement C (July, 2001), if the SAR measured at the middle channel for each test configuration (Left, right, cheek/touch, tilt/ear, extended and retracted) is at least 3.0 dB lower than the SAR limit, testing at the high and low channels is optional for such test configuration(s).
- Justification for reduced test configurations for WIFI channels per KDB Publication 248227 and April 2010 FCC/TCB Meeting Notes for 2.4 G WIFI: Highest average RF output power channel for the lowest data rate were selected for SAR evaluation. Other IEEE 802.11 modes (including 802.11n) were not investigated since the average output power were not greater than 0.25 dB than that of the corresponding channel in the lowest data rate IEEE 802.11b mode.
- When the maximum extrapolated peak SAR of the zoom scan for the maximum output channel is <1.6 W/kg and the 1g averaged SAR is <0.8 W/kg, SAR testing on other channels is not required. Otherwise, the other default (or corresponding required) test channels were additionally tested using the lowest data rate.



**15.7 Measurement Results (802.11a - 5.8 G Band Head SAR)**

FREQUENCY		Modulation	Begin Power (dBm)	Drift Power (dB)	Battery	Phantom Position	Antenna Type	Data Rate	SAR (W/kg)
MHz	Ch								
5785	157	802.11a	13.12	-0.100	Standard	Left Touch	Internal	6 Mbps	0.043
5785	157	802.11a	13.12	-0.090	Standard	Right Touch	Internal	6 Mbps	0.066
5785	157	802.11a	13.12	0.120	Standard	Left Tilt 15°	Internal	6 Mbps	0.063
5785	157	802.11a	13.12	-0.180	Standard	Right Tilt 15°	Internal	6 Mbps	0.068
<b>ANSI / IEEE C95.1 2005 – SAFETY LIMIT Spatial Peak Uncontrolled Exposure/General Population Exposure</b>						<b>Head 1.6 W/kg (mW/g) averaged over 1 gram</b>			

## NOTE:

- The test data reported are the worst-case SAR value with the antenna-head position set in a typical configuration. Test procedures used are according to FCC/OET Bulletin 65, Supp.C [July 2001].
- All modes of operation were investigated, and worst-case results are reported.
- Prior to testing the conducted output power was measured.
- The EUT is tested 2<sup>nd</sup> hot-spot peak, if it is less than 2dB below the highest peak.
- Test Signal Call Mode       Continuous Tx On       Manu. Test Codes       Base Station Simulator
- Tissue parameters and temperatures are listed on the SAR plots.
- Liquid tissue depth is 15.0cm.±0.1. To confirm the proper SAR liquid depth, the z-axis plots from the system verifications were included since the system verifications were performed using the same liquid, probe and DAE as the SAR tests in the same time period.
- Justification for reduced test configurations: per FCC/OET Supplement C (July, 2001), if the SAR measured at the middle channel for each test configuration (Left, right, cheek/touch, tilt/ear, extended and retracted) is at least 3.0 dB lower than the SAR limit, testing at the high and low channels is optional for such test configuration(s).
- Justification for reduced test configurations for WIFI channels per KDB Publication 248227 and April 2010 FCC/TCB Meeting Notes for 5 GHz WIFI: Highest average RF output power channel for the lowest data rate was selected for SAR evaluation in 802.11a. Other IEEE 802.11 modes (including 802.11n) were not investigated since the average output powers over all channels and data rates were not more than 0.25 dB higher than the tested channel in the lowest data rate of IEEE 802.11a mode.
- When the maximum extrapolated peak SAR of the zoom scan for the maximum output channel is <1.6 W/kg and the 1g averaged SAR is <0.8 W/kg, SAR testing on other channels is not required. Otherwise, the other default (or corresponding required) test channels were additionally tested using the lowest data rate.

**15.8 Measurement Results (802.11a - 5.2 G Band Head SAR)**

FREQUENCY		Modulation	Begin Power (dBm)	Drift Power (dB)	Battery	Phantom Position	Antenna Type	Data Rate	SAR (W/kg)
MHz	Ch								
5180	36	802.11a	12.23	-0.040	Standard	Left Touch	Internal	6 Mbps	0.070
5180	36	802.11a	12.23	-0.060	Standard	Right Touch	Internal	6 Mbps	0.051
5180	36	802.11a	12.23	-0.180	Standard	Left Tilt 15°	Internal	6 Mbps	0.057
5180	36	802.11a	12.23	-0.190	Standard	Right Tilt 15°	Internal	6 Mbps	0.052
<b>ANSI / IEEE C95.1 2005 – SAFETY LIMIT Spatial Peak Uncontrolled Exposure/General Population Exposure</b>						<b>Head 1.6 W/kg (mW/g) averaged over 1 gram</b>			

## NOTE:

- The test data reported are the worst-case SAR value with the antenna-head position set in a typical configuration. Test procedures used are according to FCC/OET Bulletin 65, Supp.C [July 2001].
- All modes of operation were investigated, and worst-case results are reported.
- Prior to testing the conducted output power was measured.
- The EUT is tested 2<sup>nd</sup> hot-spot peak, if it is less than 2dB below the highest peak.
- Test Signal Call Mode       Continuous Tx On       Manu. Test Codes       Base Station Simulator
- Tissue parameters and temperatures are listed on the SAR plots.
- Liquid tissue depth is 15.0cm.±0.1. To confirm the proper SAR liquid depth, the z-axis plots from the system verifications were included since the system verifications were performed using the same liquid, probe and DAE as the SAR tests in the same time period.
- Justification for reduced test configurations: per FCC/OET Supplement C (July, 2001), if the SAR measured at the middle channel for each test configuration (Left, right, cheek/touch, tilt/ear, extended and retracted) is at least 3.0 dB lower than the SAR limit, testing at the high and low channels is optional for such test configuration(s).
- Justification for reduced test configurations for WIFI channels per KDB Publication 248227 and April 2010 FCC/TCB Meeting Notes for 5 GHz WIFI: Highest average RF output power channel for the lowest data rate was selected for SAR evaluation in 802.11a. Other IEEE 802.11 modes (including 802.11n) were not investigated since the average output powers over all channels and data rates were not more than 0.25 dB higher than the tested channel in the lowest data rate of IEEE 802.11a mode.
- When the maximum extrapolated peak SAR of the zoom scan for the maximum output channel is <1.6 W/kg and the 1g averaged SAR is <0.8 W/kg, SAR testing on other channels is not required. Otherwise, the other default (or corresponding required) test channels were additionally tested using the lowest data rate.

**15.9 Measurement Results (802.11a - 5.3 G Band Head SAR)**

FREQUENCY		Modulation	Begin Power (dBm)	Drift Power (dB)	Battery	Phantom Position	Antenna Type	Data Rate	SAR (W/kg)
MHz	Ch								
5260	52	802.11a	12.67	-0.100	Standard	Left Touch	Internal	6 Mbps	0.081
5260	52	802.11a	12.67	0.170	Standard	Right Touch	Internal	6 Mbps	0.044
5260	52	802.11a	12.67	-0.190	Standard	Left Tilt 15°	Internal	6 Mbps	0.052
5260	52	802.11a	12.67	0.040	Standard	Right Tilt 15°	Internal	6 Mbps	0.045
<b>ANSI / IEEE C95.1 2005 – SAFETY LIMIT Spatial Peak Uncontrolled Exposure/General Population Exposure</b>						<b>Head 1.6 W/kg (mW/g) averaged over 1 gram</b>			

## NOTE:

- The test data reported are the worst-case SAR value with the antenna-head position set in a typical configuration. Test procedures used are according to FCC/OET Bulletin 65, Supp.C [July 2001].
- All modes of operation were investigated, and worst-case results are reported.
- Prior to testing the conducted output power was measured.
- The EUT is tested 2<sup>nd</sup> hot-spot peak, if it is less than 2dB below the highest peak.
- Test Signal Call Mode       Continuous Tx On       Manu. Test Codes       Base Station Simulator
- Tissue parameters and temperatures are listed on the SAR plots.
- Liquid tissue depth is 15.0cm.±0.1. To confirm the proper SAR liquid depth, the z-axis plots from the system verifications were included since the system verifications were performed using the same liquid, probe and DAE as the SAR tests in the same time period.
- Justification for reduced test configurations: per FCC/OET Supplement C (July, 2001), if the SAR measured at the middle channel for each test configuration (Left, right, cheek/touch, tilt/ear, extended and retracted) is at least 3.0 dB lower than the SAR limit, testing at the high and low channels is optional for such test configuration(s).
- Justification for reduced test configurations for WIFI channels per KDB Publication 248227 and April 2010 FCC/TCB Meeting Notes for 5 GHz WIFI: Highest average RF output power channel for the lowest data rate was selected for SAR evaluation in 802.11a. Other IEEE 802.11 modes (including 802.11n) were not investigated since the average output powers over all channels and data rates were not more than 0.25 dB higher than the tested channel in the lowest data rate of IEEE 802.11a mode.
- When the maximum extrapolated peak SAR of the zoom scan for the maximum output channel is <1.6 W/kg and the 1g averaged SAR is <0.8 W/kg, SAR testing on other channels is not required. Otherwise, the other default (or corresponding required) test channels were additionally tested using the lowest data rate.

**15.10 Measurement Results (802.11a - 5.5 G Band Head SAR)**

FREQUENCY		Modulation	Begin Power (dBm)	Drift Power (dB)	Battery	Phantom Position	Antenna Type	Data Rate	SAR (W/kg)
MHz	Ch								
5580	116	802.11a	13.78	-0.180	Standard	Left Touch	Internal	6 Mbps	0.096
5580	116	802.11a	13.78	-0.140	Standard	Right Touch	Internal	6 Mbps	0.030
5580	116	802.11a	13.78	-0.090	Standard	Left Tilt 15°	Internal	6 Mbps	0.067
5580	116	802.11a	13.78	-0.030	Standard	Right Tilt 15°	Internal	6 Mbps	0.033
<b>ANSI / IEEE C95.1 2005 – SAFETY LIMIT Spatial Peak Uncontrolled Exposure/General Population Exposure</b>						<b>Head 1.6 W/kg (mW/g) averaged over 1 gram</b>			

## NOTE:

- The test data reported are the worst-case SAR value with the antenna-head position set in a typical configuration. Test procedures used are according to FCC/OET Bulletin 65, Supp.C [July 2001].
- All modes of operation were investigated, and worst-case results are reported.
- Prior to testing the conducted output power was measured.
- The EUT is tested 2<sup>nd</sup> hot-spot peak, if it is less than 2dB below the highest peak.
- Test Signal Call Mode       Continuous Tx On       Manu. Test Codes       Base Station Simulator
- Tissue parameters and temperatures are listed on the SAR plots.
- Liquid tissue depth is 15.0cm.±0.1. To confirm the proper SAR liquid depth, the z-axis plots from the system verifications were included since the system verifications were performed using the same liquid, probe and DAE as the SAR tests in the same time period.
- Justification for reduced test configurations: per FCC/OET Supplement C (July, 2001), if the SAR measured at the middle channel for each test configuration (Left, right, cheek/touch, tilt/ear, extended and retracted) is at least 3.0 dB lower than the SAR limit, testing at the high and low channels is optional for such test configuration(s).
- Justification for reduced test configurations for WIFI channels per KDB Publication 248227 and April 2010 FCC/TCB Meeting Notes for 5 GHz WIFI: Highest average RF output power channel for the lowest data rate was selected for SAR evaluation in 802.11a. Other IEEE 802.11 modes (including 802.11n) were not investigated since the average output powers over all channels and data rates were not more than 0.25 dB higher than the tested channel in the lowest data rate of IEEE 802.11a mode.
- When the maximum extrapolated peak SAR of the zoom scan for the maximum output channel is <1.6 W/kg and the 1g averaged SAR is <0.8 W/kg, SAR testing on other channels is not required. Otherwise, the other default (or corresponding required) test channels were additionally tested using the lowest data rate.

**15.11 Measurement Results (GSM850 GPRS Hotspot Body SAR)**

FREQUENCY		Modulation	Begin Power (dBm)	Drift Power (dB)	Configuration	Phantom Position	Antenna Type	SAR (W/kg)
MHz	Ch							
836.6	190(Mid)	GPRS 2 Tx	31.5	-0.140	Bottom	1.0 cm without Holster	Internal	0.146
836.6	190(Mid)	GPRS 2 Tx	31.5	0.180	Front	1.0 cm without Holster	Internal	0.333
836.6	190(Mid)	GSM850	33.5	-0.060	Rear	1.0 cm without Holster	Internal	0.411
836.6	190(Mid)	GPRS 1 Tx	33.5	-0.170	Rear	1.0 cm without Holster	Internal	0.407
836.6	190(Mid)	GPRS 2 Tx	31.5	-0.050	Rear	1.0 cm without Holster	Internal	0.572
836.6	190(Mid)	GPRS 3 Tx	29.5	0.010	Rear	1.0 cm without Holster	Internal	0.533
836.6	190(Mid)	GPRS 4 Tx	27.5	-0.100	Rear	1.0 cm without Holster	Internal	0.355
836.6	190(Mid)	GPRS 2 Tx	31.5	0.100	Left	1.0 cm without Holster	Internal	0.434
<b>ANSI / IEEE C95.1-2005 – SAFETY LIMIT Spatial Peak Uncontrolled Exposure/General Population Exposure</b>						<b>Body 1.6 W/kg (mW/g) averaged over 1 gram</b>		

## NOTE:

- The test data reported are the worst-case SAR value with the antenna-body position set in a typical configuration. Test procedures used are according to FCC/OET Bulletin 65, Supp.C [July 2001].
- All modes of operation were investigated, and worst-case results are reported.
- Prior to testing the conducted output power was measured.
- The EUT is tested 2<sup>nd</sup> hot-spot peak, if it is less than 2dB below the highest peak.
- Battery is fully charged for all readings.
- Test Signal Call Mode  Continuous Tx On  Manu. Test Codes  Base Station Simulator
- Tissue parameters and temperatures are listed on the SAR plots.
- Liquid tissue depth is 15.0cm.±0.1. To confirm the proper SAR liquid depth, the z-axis plots from the system verifications were included since the system verifications were performed using the same liquid, probe and DAE as the SAR tests in the same time period.
- Justification for reduced test configurations: per FCC/OET Supplement C (July, 2001), if the SAR measured at the middle channel for each test configuration (Left, right, cheek/touch, tilt/ear, extended and retracted) is at least 3.0 dB lower than the SAR limit, testing at the high and low channels is optional for such test configuration(s).
- Top and Right was not tested since the antenna distance from the edge was greater than 2.5cm per FCC KDB Publication 941225 D06 guidance (see Section 13.1).

**15.12 Measurement Results (PCS1900 GPRS Hotspot Body SAR)**

FREQUENCY		Modulation	Begin Power (dBm)	Drift Power (dB)	Configuration	Phantom Position	Antenna Type	SAR (W/kg)
MHz	Ch							
1880.0	661(Mid)	GPRS 3 Tx	28.5	0.040	Bottom	1.0 cm without Holster	Internal	0.535
1880.0	661(Mid)	GPRS 3 Tx	28.5	0.130	Front	1.0 cm without Holster	Internal	0.679
1880.0	661(Mid)	PCS1900	30.5	-0.130	Rear	1.0 cm without Holster	Internal	0.480
1880.0	661(Mid)	GPRS 1 Tx	30.5	0.040	Rear	1.0 cm without Holster	Internal	0.487
1880.0	661(Mid)	GPRS 2 Tx	28.5	-0.000	Rear	1.0 cm without Holster	Internal	0.677
1850.2	512(Low)	GPRS 3 Tx	28.5	0.020	Rear	1.0 cm without Holster	Internal	1.030
1880.0	661(Mid)	GPRS 3 Tx	28.5	-0.030	Rear	1.0 cm without Holster	Internal	1.020
1909.8	810(High)	GPRS 3 Tx	28.5	-0.080	Rear	1.0 cm without Holster	Internal	0.997
1850.2	512(Low)	GPRS 4 Tx	26.5	-0.070	Rear	1.0 cm without Holster	Internal	0.881
1880.0	661(Mid)	GPRS 4 Tx	26.5	-0.050	Rear	1.0 cm without Holster	Internal	0.866
1909.8	810(High)	GPRS 4 Tx	26.5	-0.120	Rear	1.0 cm without Holster	Internal	0.832
1880.0	661(Mid)	GPRS 3 Tx	28.5	0.020	Left	1.0 cm without Holster	Internal	0.496
<b>ANSI / IEEE C95.1-2005 – SAFETY LIMIT Spatial Peak Uncontrolled Exposure/General Population Exposure</b>						<b>Body 1.6 W/kg (mW/g) averaged over 1 gram</b>		

## NOTE:

- The test data reported are the worst-case SAR value with the antenna-body position set in a typical configuration. Test procedures used are according to FCC/OET Bulletin 65, Supp.C [July 2001].
- All modes of operation were investigated, and worst-case results are reported.
- Prior to testing the conducted output power was measured.
- The EUT is tested 2<sup>nd</sup> hot-spot peak, if it is less than 2dB below the highest peak.
- Battery is fully charged for all readings.
- Test Signal Call Mode  Continuous Tx On  Manu. Test Codes  Base Station Simulator
- Tissue parameters and temperatures are listed on the SAR plots.
- Liquid tissue depth is 15.0cm.±0.1. To confirm the proper SAR liquid depth, the z-axis plots from the system verifications were included since the system verifications were performed using the same liquid, probe and DAE as the SAR tests in the same time period.
- Justification for reduced test configurations: per FCC/OET Supplement C (July, 2001), if the SAR measured at the middle channel for each test configuration (Left, right, cheek/touch, tilt/ear, extended and retracted) is at least 3.0 dB lower than the SAR limit, testing at the high and low channels is optional for such test configuration(s).
- Top and Right was not tested since the antenna distance from the edge was greater than 2.5cm per FCC KDB Publication 941225 D06 guidance (see Section 13.1).



**15.13 Measurement Results (WCDMA 850 Hotspot Body SAR)**

FREQUENCY		Modulation	Begin Power (dBm)	Drift Power (dB)	Configuration	Phantom Position	Antenna Type	SAR (W/kg)
MHz	Ch							
836.6	4183(Mid)	WCDMA 850	22.95	-0.180	Bottom	1.0 cm without Holster	Internal	0.133
836.6	4183(Mid)	WCDMA 850	22.95	-0.110	Front	1.0 cm without Holster	Internal	0.309
836.6	4183(Mid)	WCDMA 850	22.95	0.040	Rear	1.0 cm without Holster	Internal	0.427
836.6	4183(Mid)	WCDMA 850	22.95	-0.040	Left	1.0 cm without Holster	Internal	0.385
<b>ANSI / IEEE C95.1 2005 – SAFETY LIMIT</b>						<b>Body</b>		
<b>Spatial Peak</b>						<b>1.6 W/kg (mW/g)</b>		
<b>Uncontrolled Exposure/ General Population Exposure</b>						<b>averaged over 1 gram</b>		

## NOTE:

- The test data reported are the worst-case SAR value with the antenna-body position set in a typical configuration. Test procedures used are according to FCC/OET Bulletin 65, Supp.C [July 2001].
- All modes of operation were investigated, and worst-case results are reported.
- Prior to testing the conducted output power was measured.
- The EUT is tested 2<sup>nd</sup> hot-spot peak, if it is less than 2dB below the highest peak.
- Battery is fully charged for all readings.
- Test Signal Call Mode       Continuous Tx On       Manu.Test Codes       Base Station Simulator
- Tissue parameters and temperatures are listed on the SAR plots.
- Liquid tissue depth is 15.0cm.±0.1. To confirm the proper SAR liquid depth, the z-axis plots from the system verifications were included since the system verifications were performed using the same liquid, probe and DAE as the SAR tests in the same time period.
- Justification for reduced test configurations: per FCC/OET Supplement C (July, 2001), if the SAR measured at the middle channel for each test configuration (Left, right, cheek/touch, tilt/ear, extended and retracted) is at least 3.0 dB lower than the SAR limit, testing at the high and low channels is optional for such test configuration(s).
- WCDMA mode was tested under RMC 12.2 kbps configured in Test Loop Mode 1.
- Body SAR is not required for handsets with HSDPA capabilities when the maximum average output of each RF channel with HSDPA active is less than ¼ dB higher than that measured without HSDPA using 12.2 kbps RMC and the maximum SAR for 12.2 kbps RMC is ≤ 75% of the SAR limit.
- Top and Right was not tested since the antenna distance from the edge was greater than 2.5cm per FCC KDB Publication 941225 D06 guidance (see Section 13.1).

**15.14 Measurement Results (802.11b Hotspot Body SAR)**

FREQUENCY		Modulation	Begin Power (dBm)	Drift Power (dB)	Configuration	Phantom Position	Antenna Type	Data Rate	SAR (W/kg)
MHz	Ch								
2462	11(High)	802.11b	17.57	-0.130	Top	1.0 cm without Holster	Internal	1 Mbps	0.038
2462	11(High)	802.11b	17.57	0.130	Front	1.0 cm without Holster	Internal	1 Mbps	0.049
2412	1(Low)	802.11b	16.76	-0.190	Rear	1.0 cm without Holster	Internal	1 Mbps	0.052
2437	6(Mid)	802.11b	16.72	-0.120	Rear	1.0 cm without Holster	Internal	1 Mbps	0.137
2462	11(High)	802.11b	17.57	-0.160	Rear	1.0 cm without Holster	Internal	1 Mbps	0.280
2462	11(High)	802.11b	17.57	-0.190	Right	1.0 cm without Holster	Internal	1 Mbps	0.176
<b>ANSI / IEEE C95.1-2005– SAFETY LIMIT Spatial Peak Uncontrolled Exposure/General Population Exposure</b>						<b>Body 1.6 W/kg (mW/g) averaged over 1 gram</b>			

## NOTE:

- The test data reported are the worst-case SAR value with the antenna-body position set in a typical configuration. Test procedures used are according to FCC/OET Bulletin 65, Supp.C [July 2001].
- All modes of operation were investigated, and worst-case results are reported.
- Prior to testing the conducted output power was measured.
- The EUT is tested 2<sup>nd</sup> hot-spot peak, if it is less than 2dB below the highest peak.
- Battery is fully charged for all readings.
- Test Signal Call Mode  Continuous Tx On  Manu. Test Codes  Base Station Simulator
- Tissue parameters and temperatures are listed on the SAR plots.
- Liquid tissue depth is 15.0cm.±0.1. To confirm the proper SAR liquid depth, the z-axis plots from the system verifications were included since the system verifications were performed using the same liquid, probe and DAE as the SAR tests in the same time period.
- Justification for reduced test configurations: per FCC/OET Supplement C (July, 2001), if the SAR measured at the middle channel for each test configuration (Left, right, cheek/touch, tilt/ear, extended and retracted) is at least 3.0 dB lower than the SAR limit, testing at the high and low channels is optional for such test configuration(s).
- Justification for reduced test configurations for WIFI channels per KDB Publication 248227 and April 2010 FCC/TCB Meeting Notes for 2.4 GHz WIFI: Highest average RF output power channel for the lowest data rate were selected for SAR evaluation. Other IEEE 802.11 modes (including 802.11n) were not investigated since the average output power were not greater than 0.25 dB than that of the corresponding channel in the lowest data rate IEEE 802.11b mode.
- When the maximum extrapolated peak SAR of the zoom scan for the maximum output channel is <1.6 W/kg and the 1g averaged SAR is <0.8 W/kg, SAR testing on other channels is not required. Otherwise, the other default (or corresponding required) test channels were additionally tested using the lowest data rate.
- Bottom and Left were not tested since the antenna distance from the edge was greater than 2.5 cm per FCC KDB Publication 941225 D06 guidance (see Section 13.1).



**15.15 Measurement Results (802.11a - 5 G Band Body SAR)**

FREQUENCY		Modulation	Begin Power (dBm)	Drift Power (dB)	Configuration	Phantom Position	Antenna Type	Data Rate	SAR (W/kg)
MHz	Ch								
5785	157	802.11a	13.12	0.000	Rear	1.0 cm without Holster	Internal	6 Mbps	0.043
5180	36	802.11a	12.23	0.000	Rear	1.0 cm without Holster	Internal	6 Mbps	0.143
5260	52	802.11a	12.67	0.000	Rear	1.0 cm without Holster	Internal	6 Mbps	0.246
5580	116	802.11a	13.78	0.000	Rear	1.0 cm without Holster	Internal	6 Mbps	0.116
<b>ANSI / IEEE C95.1-2005– SAFETY LIMIT Spatial Peak Uncontrolled Exposure/General Population Exposure</b>						<b>Body 1.6 W/kg (mW/g) averaged over 1 gram</b>			

## NOTE:

- The test data reported are the worst-case SAR value with the antenna-body position set in a typical configuration. Test procedures used are according to FCC/OET Bulletin 65, Supp.C [July 2001].
- All modes of operation were investigated, and worst-case results are reported.
- Prior to testing the conducted output power was measured.
- The EUT is tested 2<sup>nd</sup> hot-spot peak, if it is less than 2dB below the highest peak.
- Battery is fully charged for all readings.
- Test Signal Call Mode  Continuous Tx On  Manu. Test Codes  Base Station Simulator
- Tissue parameters and temperatures are listed on the SAR plots.
- Liquid tissue depth is 15.0cm.±0.1. To confirm the proper SAR liquid depth, the z-axis plots from the system verifications were included since the system verifications were performed using the same liquid, probe and DAE as the SAR tests in the same time period.
- Justification for reduced test configurations: per FCC/OET Supplement C (July, 2001), if the SAR measured at the middle channel for each test configuration (Left, right, cheek/touch, tilt/ear, extended and retracted) is at least 3.0 dB lower than the SAR limit, testing at the high and low channels is optional for such test configuration(s).
- Justification for reduced test configurations for WIFI channels per KDB Publication 248227 and April 2010 FCC/TCB Meeting Notes for 5 GHz WIFI: Highest average RF output power channel for the lowest data rate was selected for SAR evaluation in 802.11a. Other IEEE 802.11 modes (including 802.11n) were not investigated since the average output powers over all channels and data rates were not more than 0.25 dB higher than the tested channel in the lowest data rate of IEEE 802.11a mode.
- Per FCC KDB Publication 941225 D06, when the same wireless modes and device transmission configurations are required for body-worn accessories and hotspot mode, it is not necessary to additionally test body-worn accessory SAR for the same device orientation. Therefore, the hotspot data for the back side configuration additionally shows body-worn compliance at the same distance.
- When the maximum extrapolated peak SAR of the zoom scan for the maximum output channel is <1.6 W/kg and the 1g averaged SAR is <0.8 W/kg, SAR testing on other channels is not required. Otherwise, the other default (or corresponding required) test channels were additionally tested using the lowest data rate.
- When Hotspot is enabled, all 5 GHz bands are disabled.

## 16. Scaled SAR Values to the Maximum tune-up tolerances

The following measured results were scaled to the maximum tune-up tolerances, according to the output power of the channel tested for the highest measured results in each frequency band.

### Head Position Scaled Value

Mode	Test Configuration	Ch #	Power(dBm)		SAR(W/kg)	
			Max. Tune-up limit	Measured	Measured	Scaled
GSM850	Left Touch	190	33.70	33.50	0.195	0.204
GSM850 GPRS 2 Tx	Left Touch	190	31.70	31.50	0.261	0.273
PCS1900	Left Touch	661	30.70	30.50	0.326	0.341
PCS1900 GPRS 3 Tx	Left Touch	661	28.70	28.50	0.652	0.683
WCDMA850	Left Touch	4183	23.70	22.95	0.211	0.251
802.11b	Left Touch	11	17.70	17.57	0.241	0.248
802.11a (5.8 G Band)	Right Tilt	157	14.10	13.12	0.068	0.085
802.11a (5.2 G Band)	Left Touch	36	14.10	12.23	0.070	0.108
802.11a (5.3 G Band)	Left Touch	52	14.10	12.67	0.081	0.113
802.11a (5.5 G Band)	Left Touch	116	14.10	13.78	0.096	0.103

Note: 0.683 W/kg (MAX Head SAR scaled value) + 0.248 W/kg (MAX W-LAN Head SAR scaled value) = 0.931 W/kg

### Body Position Scaled Value

Mode	Test Configuration	Ch #	Power(dBm)		SAR(W/kg)	
			Max. Tune-up limit	Measured	Measured	Scaled
GSM850 GPRS 2 Tx	Rear	190	31.70	31.50	0.572	0.599
PCS1900 GPRS 3 Tx	Rear	512	28.70	28.50	1.030	1.079
WCDMA850	Rear	4183	23.70	22.95	0.427	0.507
802.11b	Rear	11	17.70	17.57	0.280	0.289
802.11a (5.8 G Band)	Rear	157	14.10	13.12	0.043	0.054
802.11a (5.2 G Band)	Rear	36	14.10	12.23	0.143	0.220
802.11a (5.3 G Band)	Rear	52	14.10	12.67	0.246	0.342
802.11a (5.5 G Band)	Rear	116	14.10	13.78	0.116	0.125

Note: 1.079 W/kg (MAX Body SAR scaled value) + 0.342 W/kg (MAX W-LAN Body SAR scaled value) = 1.421 W/kg

## 17. CONCLUSION

---

### Measurement Conclusion

The SAR measurement indicates that the EUT complies with the RF radiation exposure limits of the FCC. These measurements are taken to simulate the RF effects exposure under the worst-case conditions. Precise laboratory measures were taken to assure repeatability of the tests. The tested device complies with the requirements in respect to all parameters subject to the test. The test results and statements relate only to the item(s) tested.

Please note that the absorption and distribution of electromagnetic energy in the body are very complex phenomena that depend on the mass, shape, and size of the body, the orientation of the body with respect to the field vectors, and the electrical properties of both the body and the environment. Other variables that may play a substantial role impossible biological effect are those that characterize the environment (e.g. ambient temperature, air velocity, relative humidity, and body insulation) and those that characterize the individual (e.g. age, gender, activity level, debilitation, or disease).

Because innumerable factors may interact to determine the specific biological outcome of an exposure to electromagnetic fields, any protection guide shall consider maximal amplification of biological effects as a result of field-body interactions, environmental conditions, and physiological variables.

## 18. REFERENCES

---

- [1] Federal Communications Commission, ET Docket 93-62, Guidelines for Evaluating the Environmental Effects of Radiofrequency Radiation, Aug. 1996.
- [2] ANSI/IEEE C95.1 - 1992, American National Standard safety levels with respect to human exposure to radiofrequency electromagnetic fields, 300kHz to 100GHz, New York: IEEE, April 2006.
- [3] ANSI/IEEE C95.3 - 2002, IEEE Recommended Practice for the Measurement of Potentially Hazardous Electromagnetic Fields - RF and Microwave, New York: IEEE, December 2002.
- [4] Federal Communications Commission, OET Bulletin 65 (Edition 97-01), Supplement C (Edition 01-01), Evaluating Compliance with FCC Guidelines for Human Exposure to Radiofrequency Electromagnetic Fields, July 2001.
- [5] IEEE Standards Coordinating Committee 34 — IEEE Std. 1528-2003, Recommended Practice for Determining the Peak Spatial-Average Specific Absorption Rate (SAR) in the Human Body Due to Wireless Communications Devices: Experimental Techniques.
- [6] NCRP, National Council on Radiation Protection and Measurements, Biological Effects and Exposure Criteria for Radio Frequency Electromagnetic Fields, NCRP Report No. 86, 1986. Reprinted Feb., 1995.
- [7] T. Schmid, O. Egger, N. Kuster, Automated E-field scanning system for dosimetric assessments, IEEE transaction on Microwave Theory and Techniques, vol. 44, Jan. 1996, pp. 105-113.
- [8] K. Pokovic, T. Schmid, N. Kuster, Robust setup for precise calibration of E-field probes in tissue simulating liquids at mobile communications frequencies, ICECOM97, Oct. 1997, pp. 120-124.
- [9] K. Polovč, T. Schmid, and N. Kuster, E-field Probe with improved isotropy in brain simulating liquids. Proceedings of the ELMAR, Zadar, Croatia, June 23-25, 1996, pp. 172-175.
- [10] Schmid & Partner Engineering AG, Application Note: Data Storage and Evaluation, June 1998, p2.
- [11] V. Hombach, K. Meier, M. Burkhardt, E. Kuhn, N. Kuster, The Dependence of EM Energy Absorption upon Human Head Modeling at 900 MHz, IEEE Transaction on Microwave Theory and Techniques, vol. 44 no. 10, Oct. 1996, pp. 1865-1873.
- [12] N. Kuster and Q. Balzano, Energy absorption mechanism by biological bodies in the near field of dipole antennas above 300MHz, IEEE Transaction on Vehicular Technology, vol. 41, no. 1, Feb. 1992, pp. 17-23.
- [13] G. Hartsgrrove, A. Kraszewski, A. Surowiec, Simulated Biological Materials for Electromagnetic Radiation Absorption Studies, University of Ottawa, Bio electromagnetics, Canada: 1987, pp. 29-36.
- [14] Q. Balzano, O. Garay, T. Manning Jr., Electromagnetic Energy Exposure of Simulated Users of Portable Cellular Telephones, IEEE Transactions on Vehicular Technology, vol. 44, no.3, Aug. 1995.
- [15] W. Gander, Computer mathematick, Birkhaeuser, Basel, 1992.
- [16] W.H. Press, S.A. Teukolsky, W.T. Vetterling, and B.P. Flannery, Numerical Receptions in C, The Art of Scientific Computing, Second edition, Cambridge University Press, 1992.
- [17] Federal Communications Commission, OET Bulletin 65, Evaluating Compliance with FCC Guidelines for Human Exposure to Radiofrequency Electromagnetic Fields. Supplement C, Dec. 1997.
- [18] N. Kuster, R. Kastle, T. Schmid, Dosimetric evaluation of mobile communications equipment with known precision, IEEE Transaction on Communications, vol. E80-B, no. 5, May 1997, pp. 645-652.
- [19] CENELEC CLC/SC111B, European Pre standard (prENV 50166-2), Human Exposure to Electromagnetic Fields High-frequency: 10 kHz-300GHz, Jan. 1995.
- [20] Prof. Dr. Niels Kuster, ETH, Eidgen Össische Technische Technische Hochschule Zürich, Dosimetric Evaluation of the Cellular Phone.

- [21] 941225 D01 FCC SAR Measurement Procedures for 3G Devices v02, October 2007
- [22] 941225 D02 Guidance PBA for 3GPP R6 HSPA v02r01, Dec. 14, 2009
- [23] 941225 D03 SAR Test Reduction GSM GPRS EDGE vo1, Dec. 2008
- [24] 941225 D04 SAR for GSM E GPRS Dual Xfer Mode v01, Jan. 27, 2010
- [25] 941225 D05 SAR for LTE Devices v01, Dec. 15, 2010
- [26] 941225 D05 SAR for LTE Devices v02, Oct. 24, 2012
- [27] 941225 D06 Hot Spot SAR v01, April 4, 2011
- [28] 941225 D07 UMPC Mini Tablet Devices v01, April 4, 2011
- [29] SAR Measurement procedures for IEEE 802.11 a/b/g KDB Publication 248227
- [30] FCC SAR Considerations for Cell Phones with Multiple Transmitters v01r05 #648474, Sept 2008
- [31] FCC SAR Policy Handsts Multi Xmitter Ant v01r01 #648474, Sept, 2008
- [32] Handset Wireless Battery Chargers v01r01 #648474, March, 2012
- [33] SAR Handsets Multi xmitter and Ant v01 #648474, Oct. 24, 2012
- [34] 447498 D01 Mobile Portable RF Exposure v04, Published on: Nov. 13, 2009
- [35] 447498 D01 General RF Exposure Guidance v05, Published on: Oct. 24, 2012
- [36] 447498 D02 SAR Procedures for Dongle Xmtr v02, Published on: Nov. 13, 2009
- [37] 615223 D01 802 16e WiMax SAR Guidance v01, Nov. 13, 2009
- [38] SAR Measurement Requirements for 100 MHz to 6 GHz v01, KDB Publication 865664 D01: Oct. 24, 2012
- [39] RF Exposure compliance Reporting and Documentation Considerations, KDB Publication 865664 D02: Oct. 24, 2012
- [40] SAR Measurement Requirements for 3 – 6 GHz, KDB Publication 865664, October, 2006
- [41] Application Note for SAR Probe Calibration and System Verification Consideration for Measurements at 150 MHz – 3 GHz, KDB Publication 450824