

DIGITAL EMC CO., LTD

DUT: Dipole 835 MHz; Type: D835V2; Serial: D835V2 - SN:464

Communication System: CW; Frequency: 835 MHz; Duty Cycle: 1:1

Medium parameters used: $f = 835$ MHz; $\sigma = 0.875$ mho/m; $\epsilon_r = 40.028$; $\rho = 1000$ kg/m³

Phantom section: Flat Section

DASY5 Configuration:

Probe: EX3DV4 - SN3866; ConvF(8.98, 8.98, 8.98); Calibrated: 2012-06-20; ; Electronics: DAE4 Sn1335

Phantom: SAM with CRP_20120521; Type: SAM; Serial: 1679

Measurement SW: DASY52, Version 52.8 (2); SEMCAD X Version 14.6.6 (6477)

Test Date: 2012-09-01; Ambient Temp: 22.2; Tissue Temp: 22.3

Dipole Validation

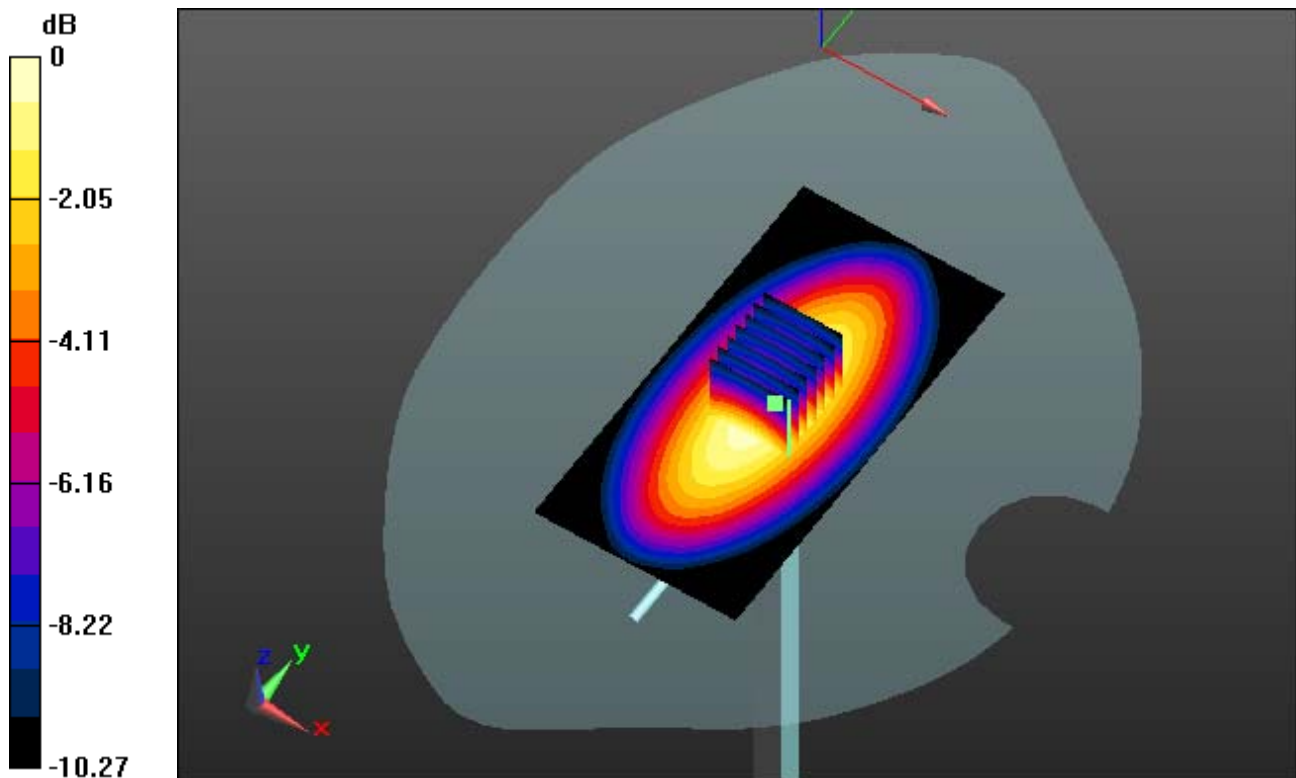
Area Scan (51x101x1): Measurement grid: dx=15mm, dy=15mm

Zoom Scan (7x7x7)/Cube 0: Measurement grid: dx=5mm, dy=5mm, dz=5mm

Power Drift = -0.01 dB

Peak SAR (extrapolated) = 3.353 mW/g

SAR(1 g) = 2.21 W/kg; SAR(10 g) = 1.45 W/kg



0 dB = 2.38 mW/g

DIGITAL EMC CO., LTD

DUT: Dipole 835 MHz; Type: D835V2; Serial: D835V2 - SN:464

Communication System: CW; Frequency: 835 MHz; Duty Cycle: 1:1
Medium parameters used: $f = 835$ MHz; $\sigma = 0.875$ mho/m; $\epsilon_r = 40.028$; $\rho = 1000$ kg/m³
Phantom section: Flat Section

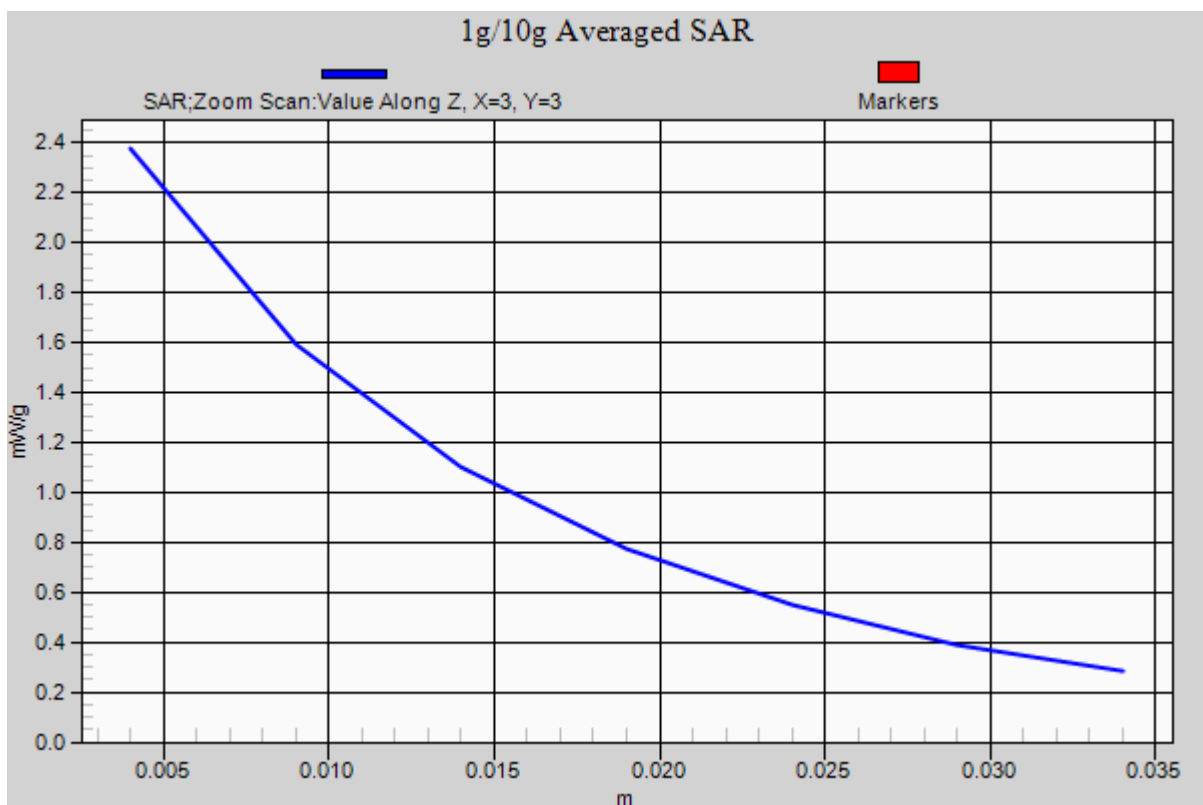
DASY5 Configuration:

Probe: EX3DV4 - SN3866; ConvF(8.98, 8.98, 8.98); Calibrated: 2012-06-20; ; Electronics: DAE4 Sn1335
Phantom: SAM with CRP_20120521; Type: SAM; Serial: 1679
Measurement SW: DASY52, Version 52.8 (2); SEMCAD X Version 14.6.6 (6477)

Test Date: 2012-09-01; Ambient Temp: 22.2; Tissue Temp: 22.3

Dipole Validation

Area Scan (51x101x1): Measurement grid: dx=15mm, dy=15mm
Zoom Scan (7x7x7)/Cube 0: Measurement grid: dx=5mm, dy=5mm, dz=5mm
Power Drift = -0.01 dB
Peak SAR (extrapolated) = 3.353 mW/g
SAR(1 g) = 2.21 W/kg; SAR(10 g) = 1.45 W/kg



DIGITAL EMC CO., LTD

DUT: Dipole 835 MHz; Type: D835V2; Serial: D835V2 - SN:464

Communication System: CW; Frequency: 835 MHz; Duty Cycle: 1:1

Medium parameters used: $f = 835$ MHz; $\sigma = 0.986$ mho/m; $\epsilon_r = 53.185$; $\rho = 1000$ kg/m³

Phantom section: Flat Section

DASY5 Configuration:

Probe: EX3DV4 - SN3866; ConvF(9.03, 9.03, 9.03); Calibrated: 2012-06-20; ; Electronics: DAE4 Sn1335

Phantom: SAM with CRP_20120521; Type: SAM; Serial: 1679

Measurement SW: DASY52, Version 52.8 (2); SEMCAD X Version 14.6.6 (6477)

Test Date: 2012-09-01; Ambient Temp: 22.2; Tissue Temp: 22.3

Dipole Validation

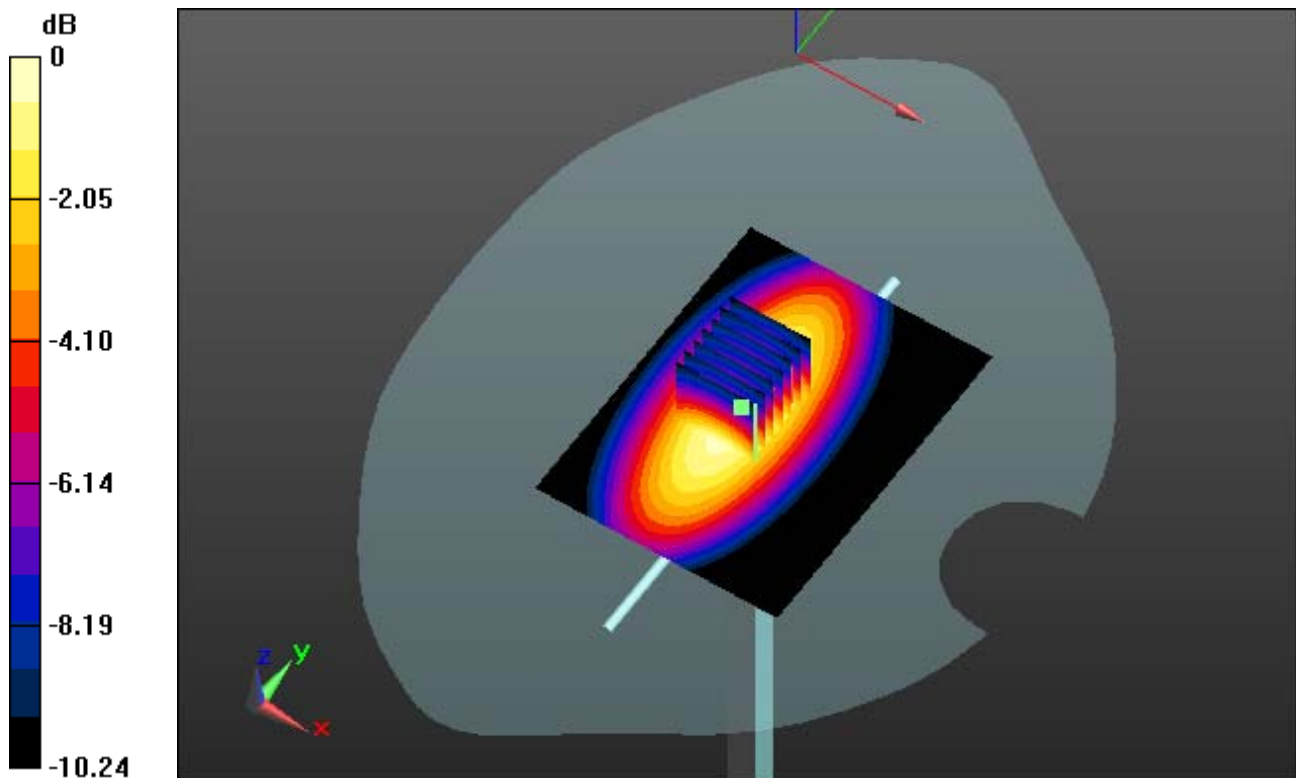
Area Scan (61x81x1): Measurement grid: dx=15mm, dy=15mm

Zoom Scan (7x7x7)/Cube 0: Measurement grid: dx=5mm, dy=5mm, dz=5mm

Power Drift = 0.01 dB

Peak SAR (extrapolated) = 3.628 mW/g

SAR(1 g) = 2.43 W/kg; SAR(10 g) = 1.6 W/kg



0 dB = 2.96 mW/g

DIGITAL EMC CO., LTD

DUT: Dipole 835 MHz; Type: D835V2; Serial: D835V2 - SN:464

Communication System: CW; Frequency: 835 MHz; Duty Cycle: 1:1
Medium parameters used: $f = 835$ MHz; $\sigma = 0.986$ mho/m; $\epsilon_r = 53.185$; $\rho = 1000$ kg/m³
Phantom section: Flat Section

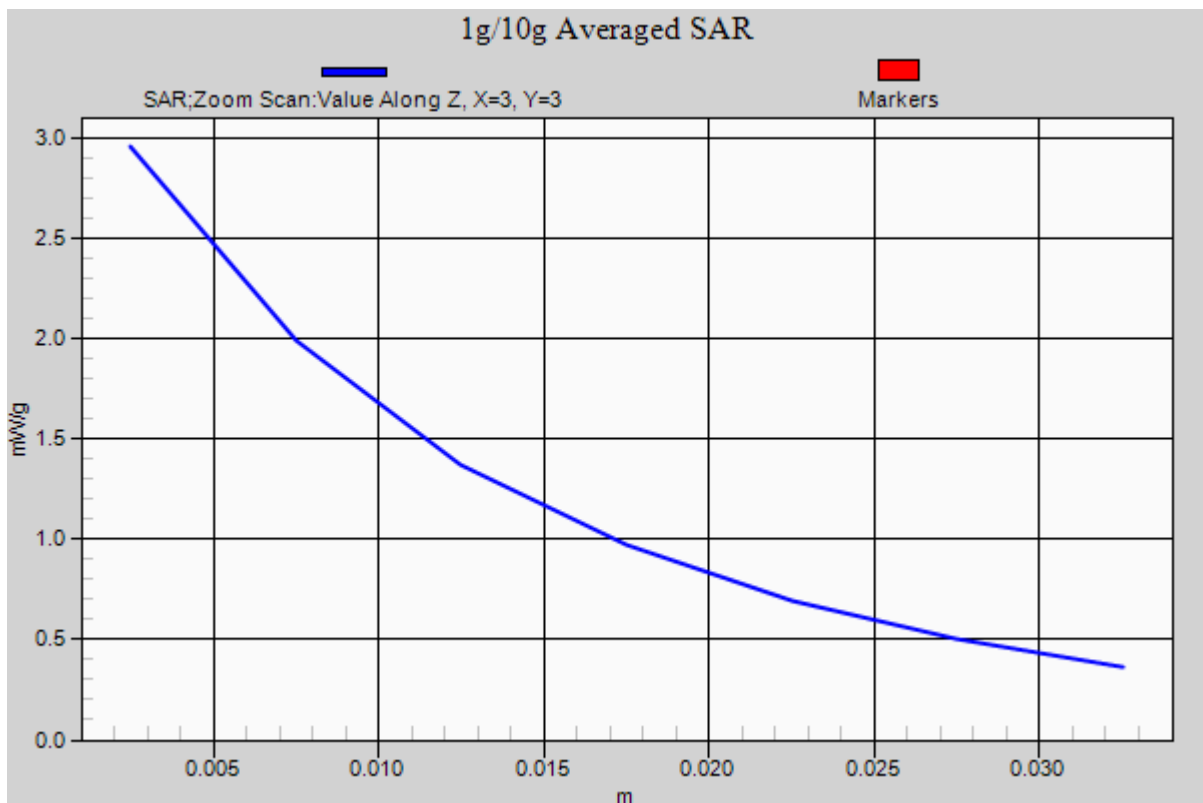
DASY5 Configuration:

Probe: EX3DV4 - SN3866; ConvF(9.03, 9.03, 9.03); Calibrated: 2012-06-20; ; Electronics: DAE4 Sn1335
Phantom: SAM with CRP_20120521; Type: SAM; Serial: 1679
Measurement SW: DASY52, Version 52.8 (2); SEMCAD X Version 14.6.6 (6477)

Test Date: 2012-09-01; Ambient Temp: 22.2; Tissue Temp: 22.3

Dipole Validation

Area Scan (61x81x1): Measurement grid: dx=15mm, dy=15mm
Zoom Scan (7x7x7)/Cube 0: Measurement grid: dx=5mm, dy=5mm, dz=5mm
Power Drift = 0.01 dB
Peak SAR (extrapolated) = 3.628 mW/g
SAR(1 g) = 2.43 W/kg; SAR(10 g) = 1.6 W/kg



DIGITAL EMC CO., LTD

DUT: Dipole 1900 MHz; Type: D1900V2; Serial: D1900V2 - SN:5d029

Communication System: CW; Frequency: 1900 MHz; Duty Cycle: 1:1

Medium parameters used: $f = 1900$ MHz; $\sigma = 1.407$ mho/m; $\epsilon_r = 39.841$; $\rho = 1000$ kg/m³

Phantom section: Flat Section

DASY5 Configuration:

Probe: EX3DV4 - SN3866; ConvF(7.76, 7.76, 7.76); Calibrated: 2012-06-20; ; Electronics: DAE4 Sn1335

Phantom: SAM with CRP_20120521; Type: SAM; Serial: 1679

Measurement SW: DASY52, Version 52.8 (2); SEMCAD X Version 14.6.6 (6477)

Test Date: 2012-09-02; Ambient Temp: 22.1; Tissue Temp: 22.2

Dipole Validation

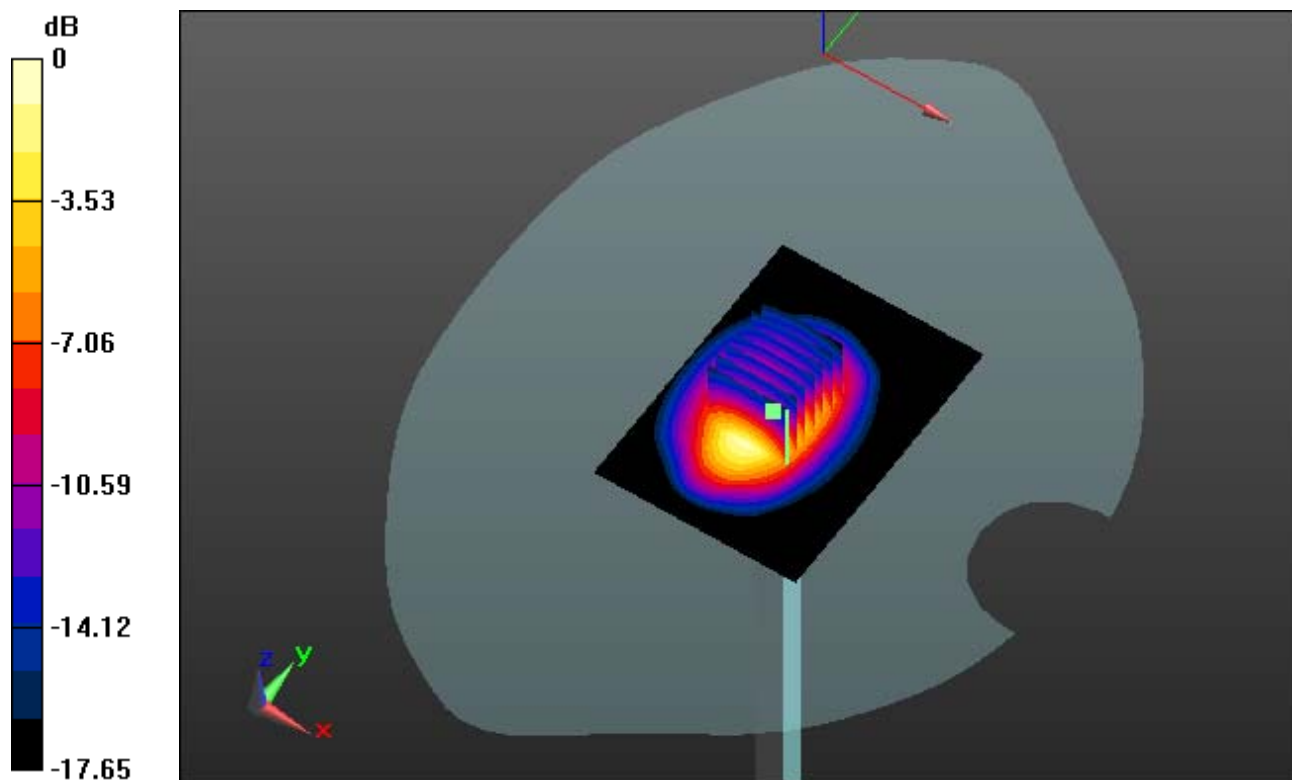
Area Scan (51x71x1): Measurement grid: dx=15mm, dy=15mm

Zoom Scan (7x7x7)/Cube 0: Measurement grid: dx=5mm, dy=5mm, dz=5mm

Power Drift = 0.04 dB

Peak SAR (extrapolated) = 17.061 mW/g

SAR(1 g) = 9.15 W/kg; SAR(10 g) = 4.77 W/kg



0 dB = 12.3 mW/g

DIGITAL EMC CO., LTD

DUT: Dipole 1900 MHz; Type: D1900V2; Serial: D1900V2 - SN:5d029

Communication System: CW; Frequency: 1900 MHz; Duty Cycle: 1:1

Medium parameters used: $f = 1900$ MHz; $\sigma = 1.407$ mho/m; $\epsilon_r = 39.841$; $\rho = 1000$ kg/m³

Phantom section: Flat Section

DASY5 Configuration:

Probe: EX3DV4 - SN3866; ConvF(7.76, 7.76, 7.76); Calibrated: 2012-06-20; ; Electronics: DAE4 Sn1335

Phantom: SAM with CRP_20120521; Type: SAM; Serial: 1679

Measurement SW: DASY52, Version 52.8 (2); SEMCAD X Version 14.6.6 (6477)

Test Date: 2012-09-02; Ambient Temp: 22.1; Tissue Temp: 22.2

Dipole Validation

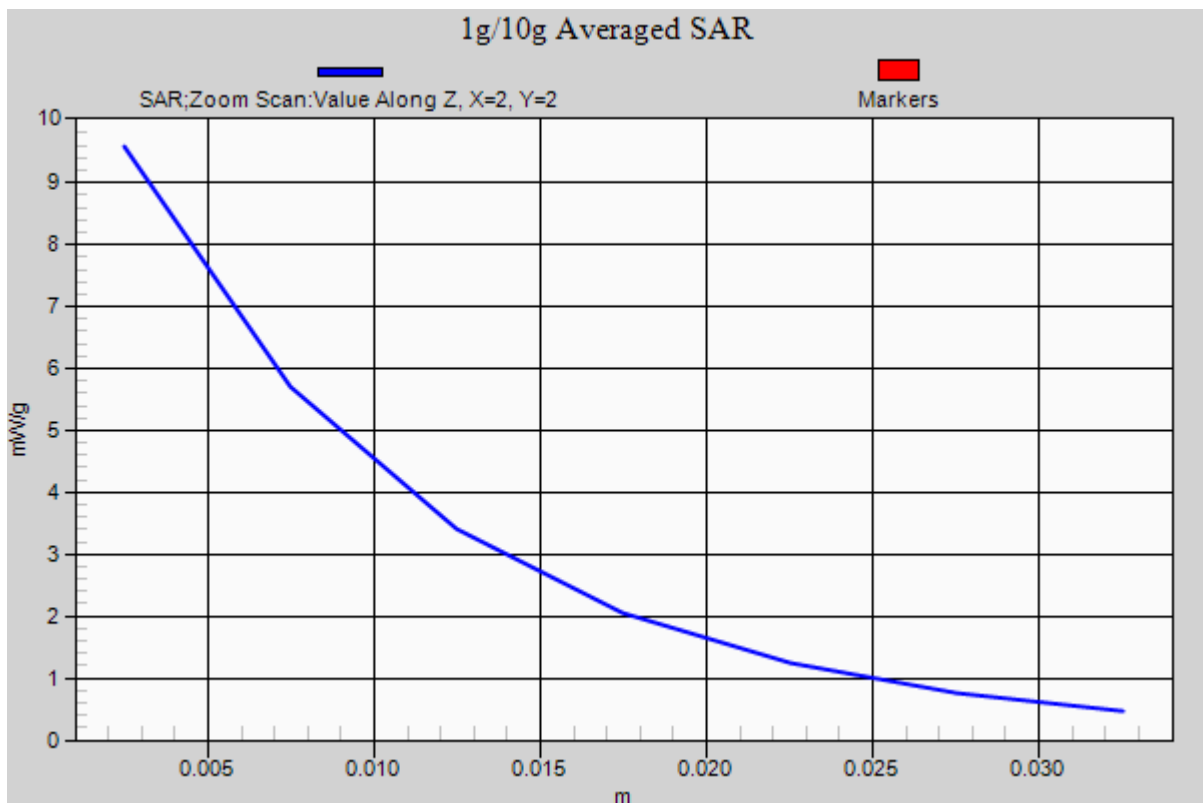
Area Scan (51x71x1): Measurement grid: dx=15mm, dy=15mm

Zoom Scan (7x7x7)/Cube 0: Measurement grid: dx=5mm, dy=5mm, dz=5mm

Power Drift = 0.04 dB

Peak SAR (extrapolated) = 17.061 mW/g

SAR(1 g) = 9.15 W/kg; SAR(10 g) = 4.77 W/kg



DIGITAL EMC CO., LTD

DUT: Dipole 1900 MHz; Type: D1900V2; Serial: D1900V2 - SN:5d029

Communication System: CW; Frequency: 1900 MHz; Duty Cycle: 1:1

Medium parameters used: $f = 1900$ MHz; $\sigma = 1.522$ mho/m; $\epsilon_r = 52.811$; $\rho = 1000$ kg/m³

Phantom section: Flat Section

DASY5 Configuration:

Probe: EX3DV4 - SN3866; ConvF(7.34, 7.34, 7.34); Calibrated: 2012-06-20; ; Electronics: DAE4 Sn1335

Phantom: SAM with CRP_20120521; Type: SAM; Serial: 1679

Measurement SW: DASY52, Version 52.8 (2); SEMCAD X Version 14.6.6 (6477)

Test Date: 2012-09-02; Ambient Temp: 22.1; Tissue Temp: 22.2

Dipole Validation

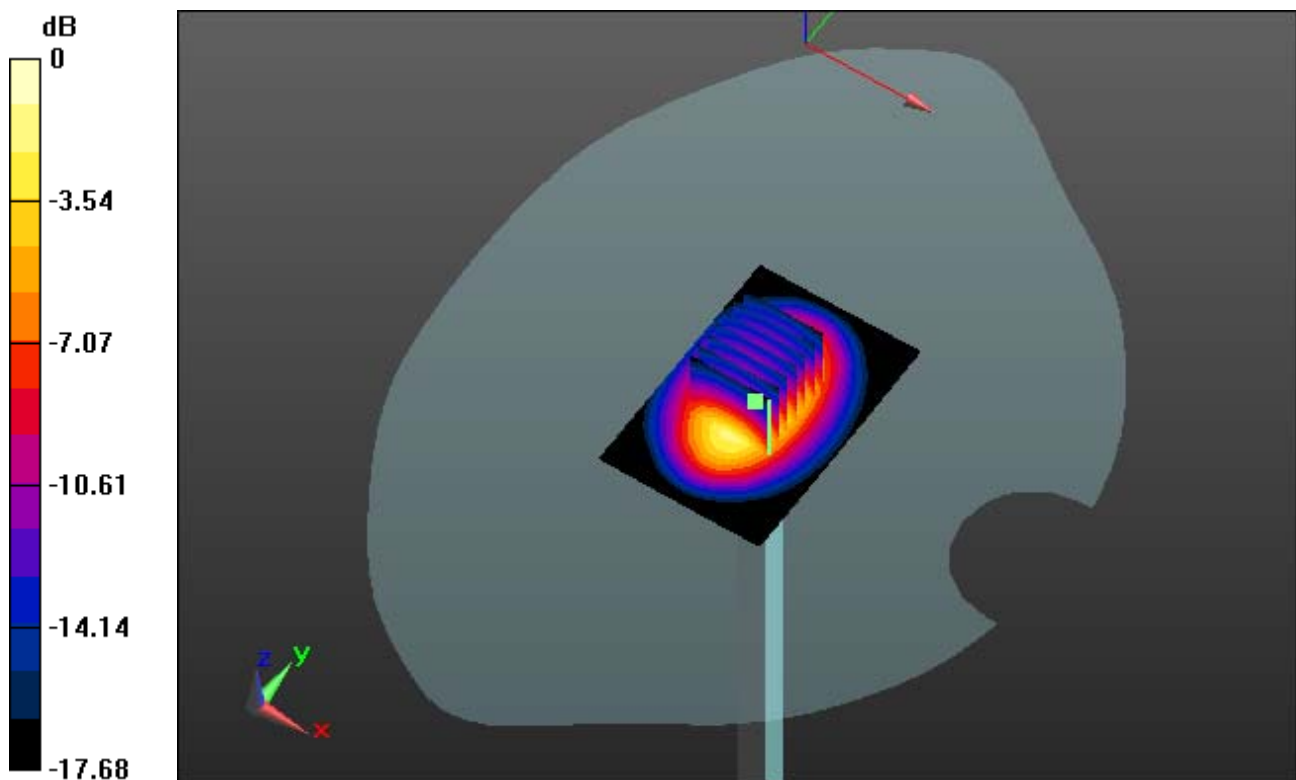
Area Scan (61x91x1): Measurement grid: dx=10mm, dy=10mm

Zoom Scan (7x7x7)/Cube 0: Measurement grid: dx=5mm, dy=5mm, dz=5mm

Power Drift = -0.00 dB

Peak SAR (extrapolated) = 18.507 mW/g

SAR(1 g) = 9.88 W/kg; SAR(10 g) = 5.11 W/kg



0 dB = 13.5 mW/g

DIGITAL EMC CO., LTD

DUT: Dipole 1900 MHz; Type: D1900V2; Serial: D1900V2 - SN:5d029

Communication System: CW; Frequency: 1900 MHz; Duty Cycle: 1:1

Medium parameters used: $f = 1900$ MHz; $\sigma = 1.522$ mho/m; $\epsilon_r = 52.811$; $\rho = 1000$ kg/m³

Phantom section: Flat Section

DASY5 Configuration:

Probe: EX3DV4 - SN3866; ConvF(7.34, 7.34, 7.34); Calibrated: 2012-06-20; ; Electronics: DAE4 Sn1335

Phantom: SAM with CRP_20120521; Type: SAM; Serial: 1679

Measurement SW: DASY52, Version 52.8 (2); SEMCAD X Version 14.6.6 (6477)

Test Date: 2012-09-02; Ambient Temp: 22.1; Tissue Temp:22.2

Dipole Validation

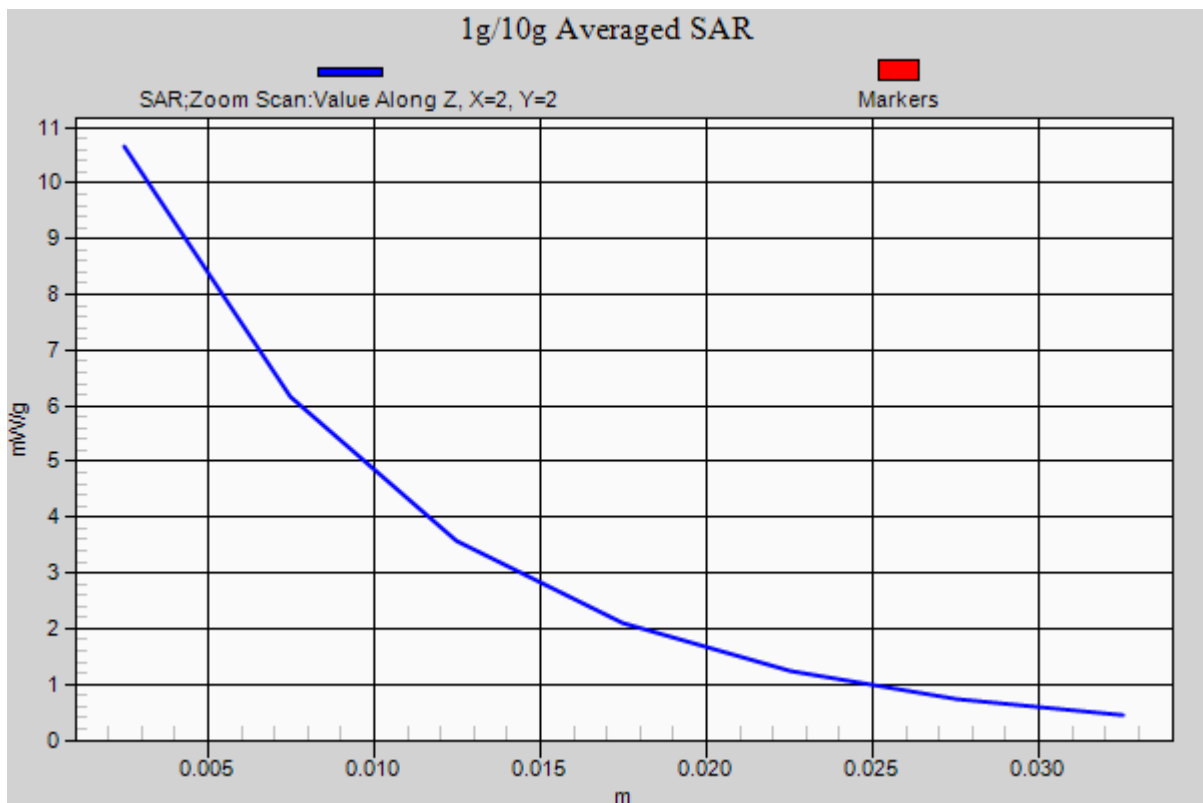
Area Scan (61x91x1): Measurement grid: dx=10mm, dy=10mm

Zoom Scan (7x7x7)/Cube 0: Measurement grid: dx=5mm, dy=5mm, dz=5mm

Power Drift = -0.00 dB

Peak SAR (extrapolated) = 18.507 mW/g

SAR(1 g) = 9.88 W/kg; SAR(10 g) = 5.11 W/kg



DIGITAL EMC CO., LTD

DUT: Dipole 2450 MHz; Type: D2450V2; Serial: D2450V2 - SN:726

Communication System: CW; Frequency: 2450 MHz; Duty Cycle: 1:1

Medium parameters used: $f = 2450$ MHz; $\sigma = 1.84$ mho/m; $\epsilon_r = 38.508$; $\rho = 1000$ kg/m³

Phantom section: Flat Section

DASY5 Configuration:

Probe: EX3DV4 - SN3866; ConvF(6.98, 6.98, 6.98); Calibrated: 2012-06-20; ; Electronics: DAE4 Sn1335

Phantom: SAM with CRP_20120521; Type: SAM; Serial: 1679

Measurement SW: DASY52, Version 52.8 (2); SEMCAD X Version 14.6.6 (6477)

Test Date: 2012-09-03; Ambient Temp: 22.3; Tissue Temp: 22.4

Dipole Validation

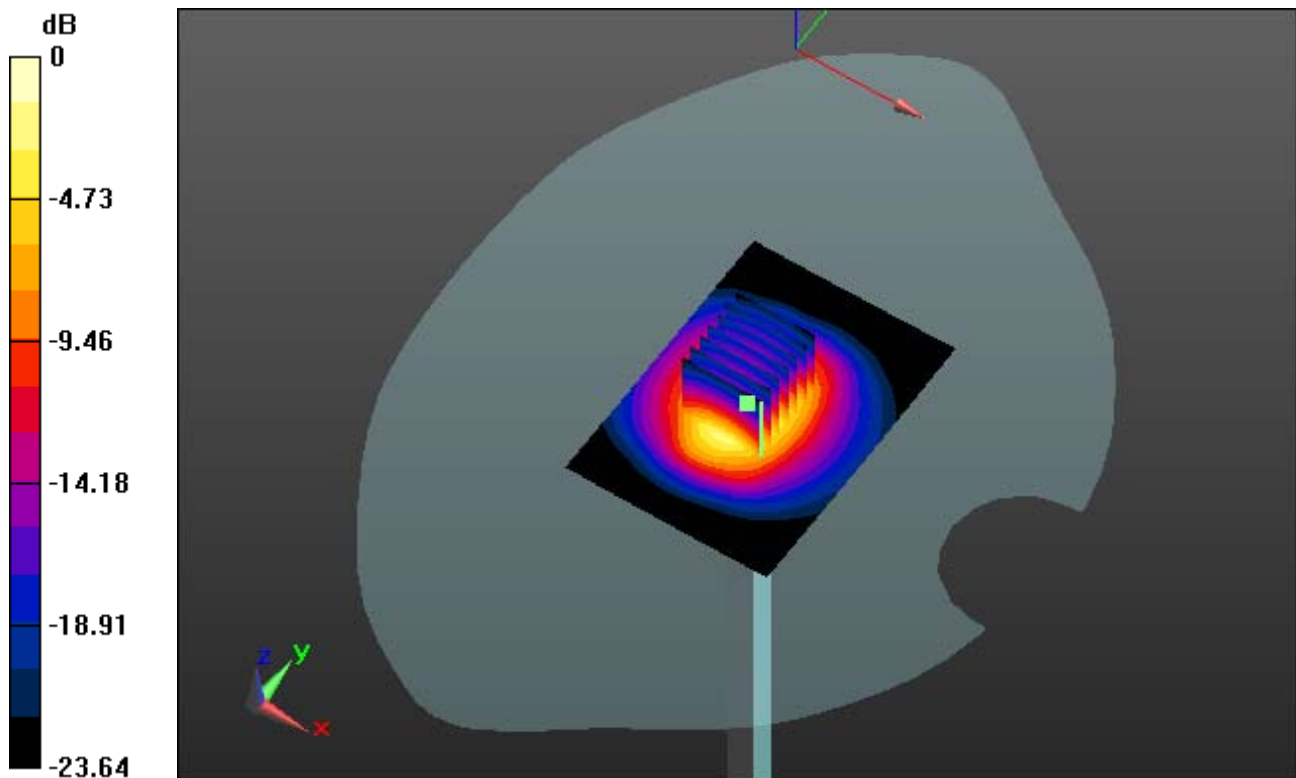
Area Scan (51x71x1): Measurement grid: dx=15mm, dy=15mm

Zoom Scan (7x7x7)/Cube 0: Measurement grid: dx=5mm, dy=5mm, dz=5mm

Power Drift = 0.01 dB

Peak SAR (extrapolated) = 30.382 mW/g

SAR(1 g) = 13.6 W/kg; SAR(10 g) = 6.13 W/kg



0 dB = 19.8 mW/g

DIGITAL EMC CO., LTD

DUT: Dipole 2450 MHz; Type: D2450V2; Serial: D2450V2 - SN:726

Communication System: CW; Frequency: 2450 MHz; Duty Cycle: 1:1
Medium parameters used: $f = 2450$ MHz; $\sigma = 1.84$ mho/m; $\epsilon_r = 38.508$; $\rho = 1000$ kg/m³
Phantom section: Flat Section

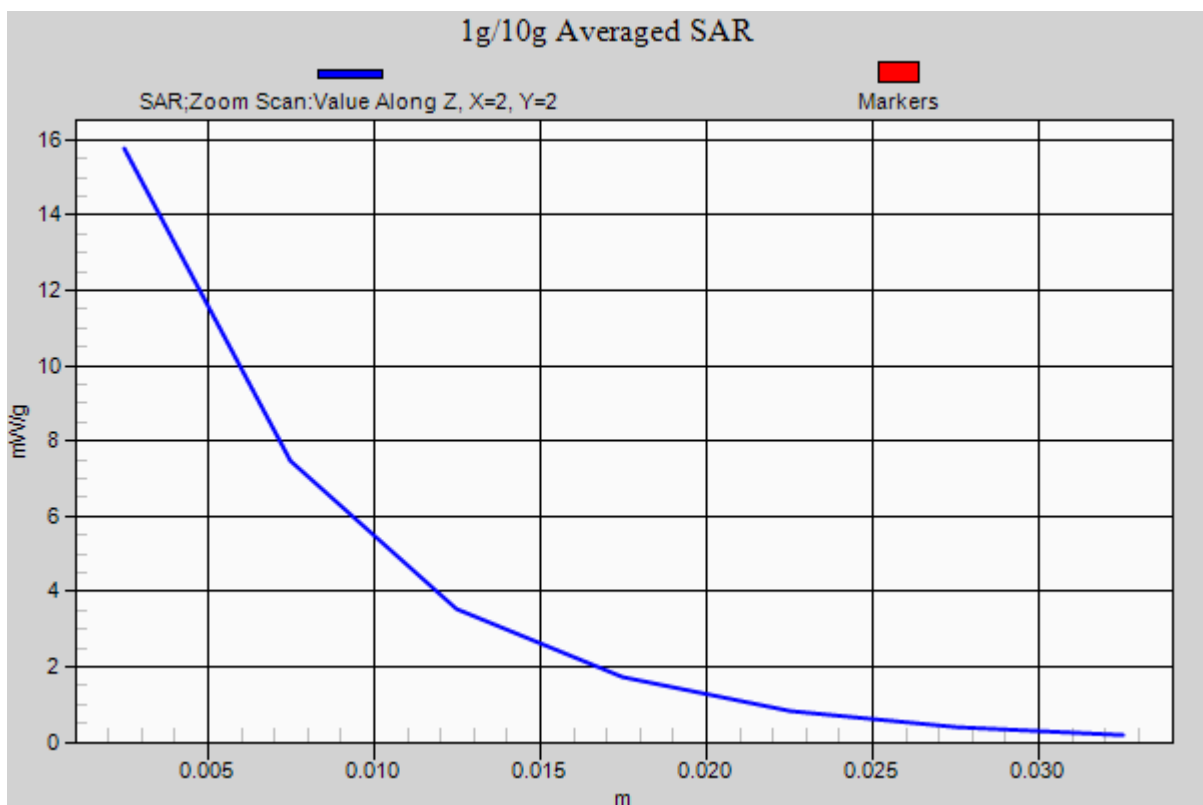
DASY5 Configuration:

Probe: EX3DV4 - SN3866; ConvF(6.98, 6.98, 6.98); Calibrated: 2012-06-20; ; Electronics: DAE4 Sn1335
Phantom: SAM with CRP_20120521; Type: SAM; Serial: 1679
Measurement SW: DASY52, Version 52.8 (2); SEMCAD X Version 14.6.6 (6477)

Test Date: 2012-09-03; Ambient Temp: 22.3; Tissue Temp: 22.4

Dipole Validation

Area Scan (51x71x1): Measurement grid: dx=15mm, dy=15mm
Zoom Scan (7x7x7)/Cube 0: Measurement grid: dx=5mm, dy=5mm, dz=5mm
Power Drift = 0.01 dB
Peak SAR (extrapolated) = 30.382 mW/g
SAR(1 g) = 13.6 W/kg; SAR(10 g) = 6.13 W/kg



DIGITAL EMC CO., LTD

DUT: Dipole 2450 MHz; Type: D2450V2; Serial: D2450V2 - SN:726

Communication System: CW; Frequency: 2450 MHz; Duty Cycle: 1:1

Medium parameters used: $f = 2450$ MHz; $\sigma = 2.008$ mho/m; $\epsilon_r = 50.794$; $\rho = 1000$ kg/m³

Phantom section: Flat Section

DASY5 Configuration:

Probe: EX3DV4 - SN3866; ConvF(6.97, 6.97, 6.97); Calibrated: 2012-06-20; ; Electronics: DAE4 Sn1335

Phantom: SAM with CRP_20120521; Type: SAM; Serial: 1679

Measurement SW: DASY52, Version 52.8 (2); SEMCAD X Version 14.6.6 (6477)

Test Date: 2012-09-03; Ambient Temp: 22.3; Tissue Temp: 22.4

Dipole Validation

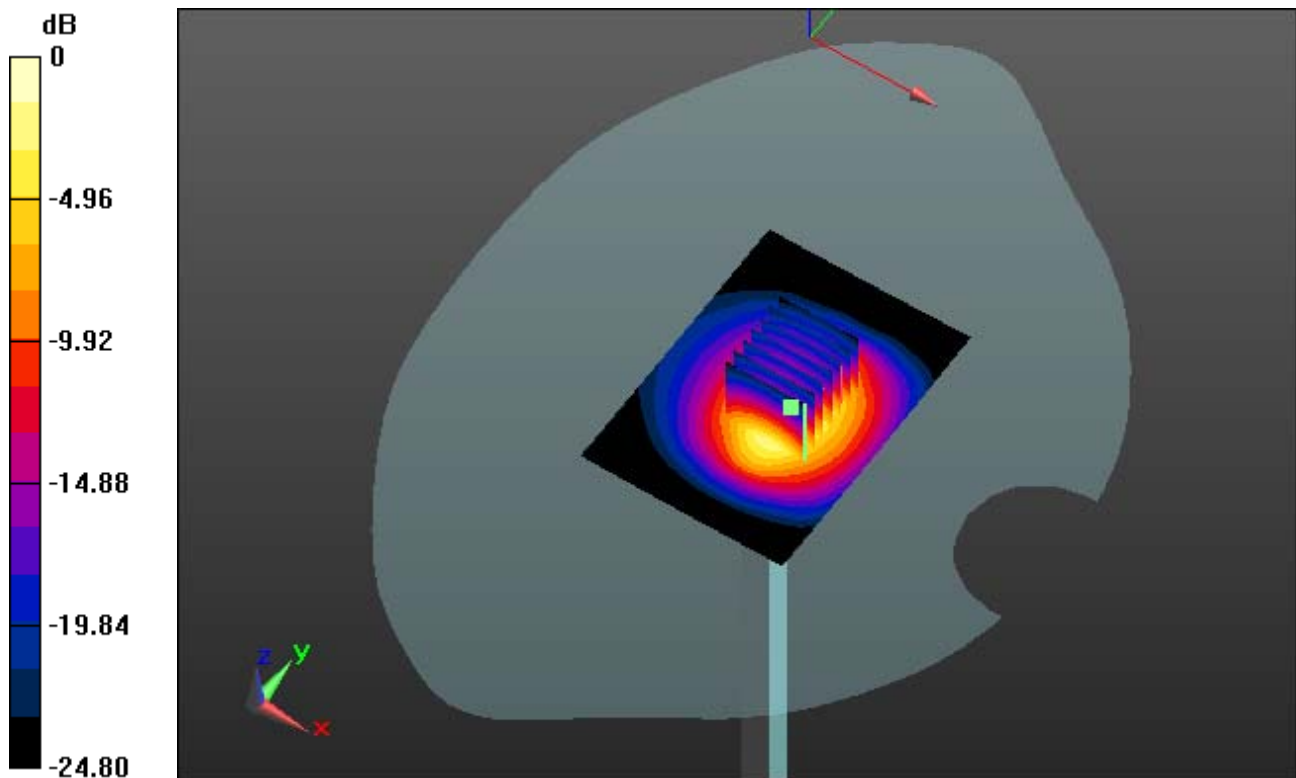
Area Scan (51x71x1): Measurement grid: dx=15mm, dy=15mm

Zoom Scan (7x7x7)/Cube 0: Measurement grid: dx=5mm, dy=5mm, dz=5mm

Power Drift = -0.07 dB

Peak SAR (extrapolated) = 29.902 mW/g

SAR(1 g) = 12.8 W/kg; SAR(10 g) = 5.65 W/kg



0 dB = 18.6 mW/g

DIGITAL EMC CO., LTD

DUT: Dipole 2450 MHz; Type: D2450V2; Serial: D2450V2 - SN:726

Communication System: CW; Frequency: 2450 MHz; Duty Cycle: 1:1

Medium parameters used: $f = 2450$ MHz; $\sigma = 2.008$ mho/m; $\epsilon_r = 50.794$; $\rho = 1000$ kg/m³

Phantom section: Flat Section

DASY5 Configuration:

Probe: EX3DV4 - SN3866; ConvF(6.97, 6.97, 6.97); Calibrated: 2012-06-20; ; Electronics: DAE4 Sn1335

Phantom: SAM with CRP_20120521; Type: SAM; Serial: 1679

Measurement SW: DASY52, Version 52.8 (2); SEMCAD X Version 14.6.6 (6477)

Test Date: 2012-09-03; Ambient Temp: 22.3; Tissue Temp: 22.4

Dipole Validation

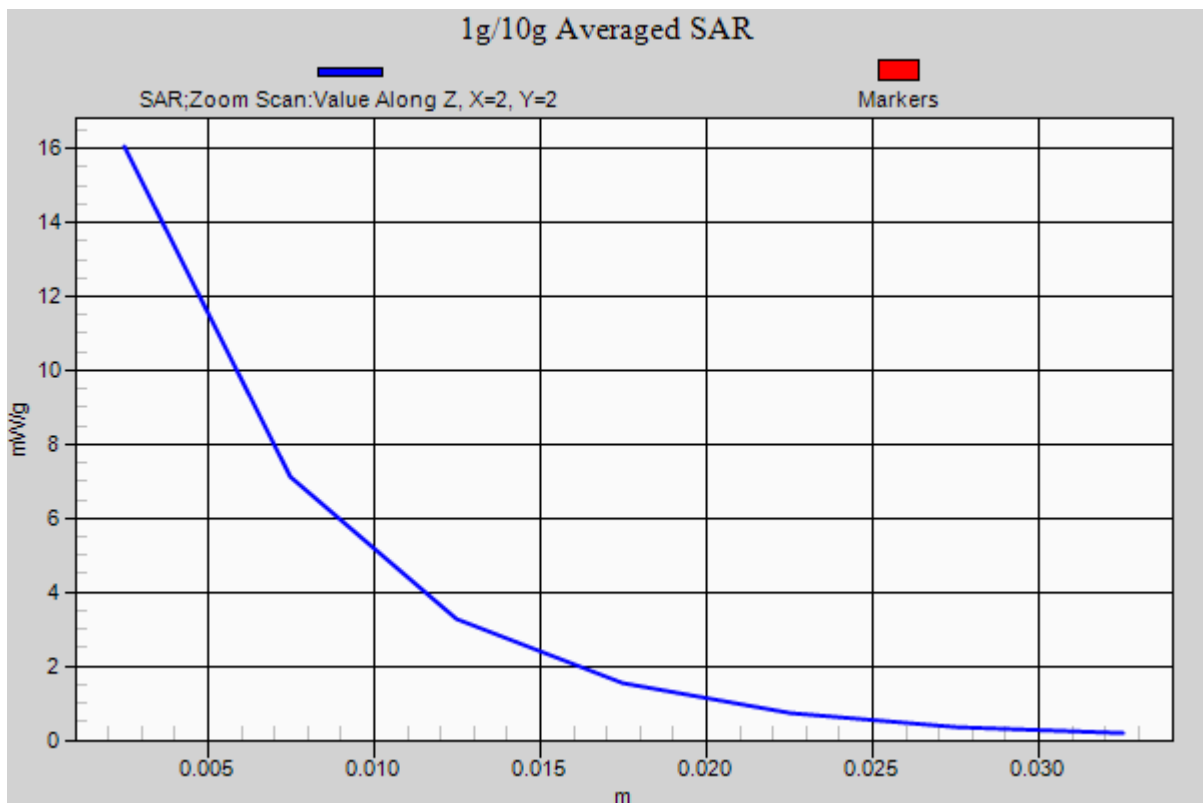
Area Scan (51x71x1): Measurement grid: dx=15mm, dy=15mm

Zoom Scan (7x7x7)/Cube 0: Measurement grid: dx=5mm, dy=5mm, dz=5mm

Power Drift = -0.07 dB

Peak SAR (extrapolated) = 29.902 mW/g

SAR(1 g) = 12.8 W/kg; SAR(10 g) = 5.65 W/kg



DIGITAL EMC CO., LTD

DUT: Dipole 5000 MHz; Type: D5GHzV2; Serial: D5GHzV2 - SN:1103

Communication System: CW; Frequency: 5200 MHz; Duty Cycle: 1:1

Medium parameters used: $f = 5200$ MHz; $\sigma = 4.699$ mho/m; $\epsilon_r = 35.752$; $\rho = 1000$ kg/m³

Phantom section: Flat Section

DASY5 Configuration:

Probe: EX3DV4 - SN3643; ConvF(4.94, 4.94, 4.94); Calibrated: 2012-01-27; ; Electronics: DAE4 Sn1335

Phantom: SAM with CRP_20120521; Type: SAM; Serial: 1679

Measurement SW: DASY52, Version 52.8 (2); SEMCAD X Version 14.6.6 (6477)

Test Date: 2012-09-04; Ambient Temp: 22.4; Tissue Temp: 22.5

Dipole Validation

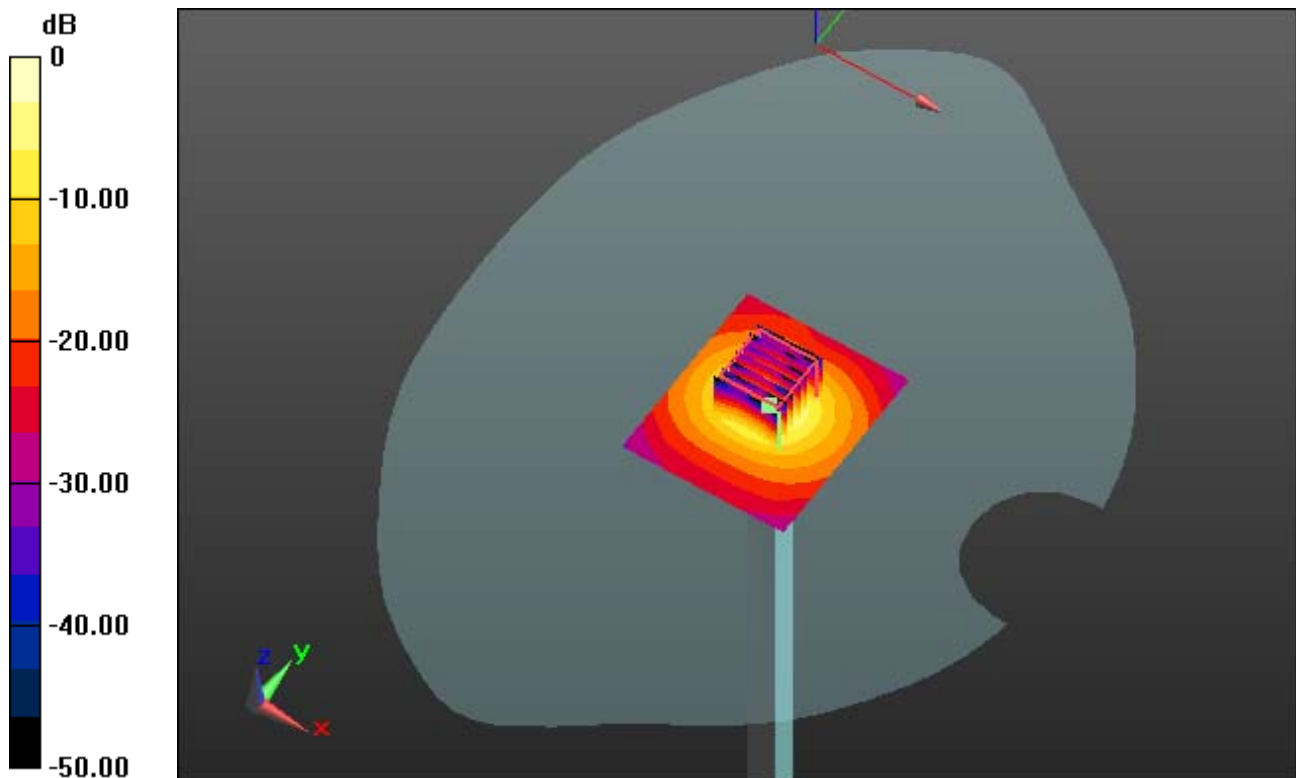
Area Scan (61x71x1): Measurement grid: dx=10mm, dy=10mm

Zoom Scan (7x7x11)/Cube 0: Measurement grid: dx=4mm, dy=4mm, dz=2mm

Power Drift = 0.09 dB

Peak SAR (extrapolated) = 34.641 mW/g

SAR(1 g) = 8.08 W/kg; SAR(10 g) = 2.25 W/kg



0 dB = 16.9 mW/g

DIGITAL EMC CO., LTD

DUT: Dipole 5000 MHz; Type: D5GHzV2; Serial: D5GHzV2 - SN:1103

Communication System: CW; Frequency: 5200 MHz; Duty Cycle: 1:1

Medium parameters used: $f = 5200$ MHz; $\sigma = 4.699$ mho/m; $\epsilon_r = 35.752$; $\rho = 1000$ kg/m³

Phantom section: Flat Section

DASY5 Configuration:

Probe: EX3DV4 - SN3643; ConvF(4.94, 4.94, 4.94); Calibrated: 2012-01-27; ; Electronics: DAE4 Sn1335

Phantom: SAM with CRP_20120521; Type: SAM; Serial: 1679

Measurement SW: DASY52, Version 52.8 (2); SEMCAD X Version 14.6.6 (6477)

Test Date: 2012-09-04; Ambient Temp: 22.4; Tissue Temp: 22.5

Dipole Validation

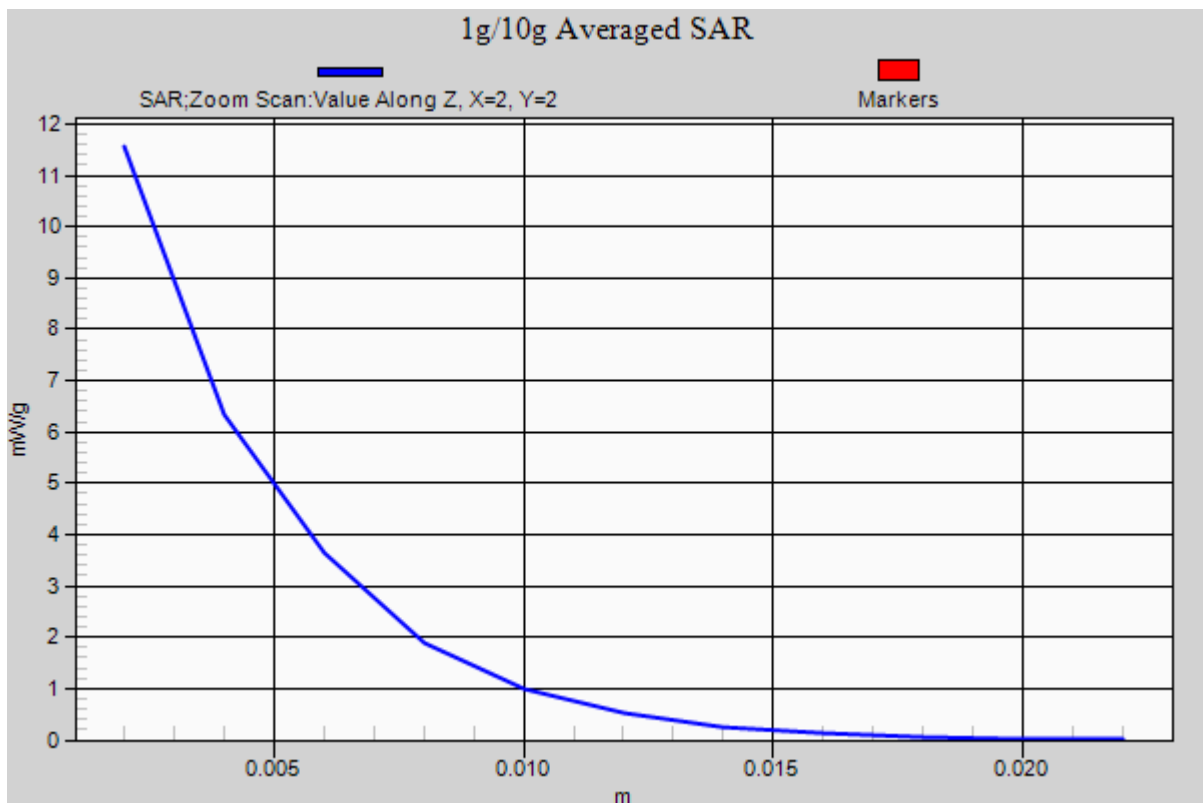
Area Scan (61x71x1): Measurement grid: dx=10mm, dy=10mm

Zoom Scan (7x7x11)/Cube 0: Measurement grid: dx=4mm, dy=4mm, dz=2mm

Power Drift = 0.09 dB

Peak SAR (extrapolated) = 34.641 mW/g

SAR(1 g) = 8.08 W/kg; SAR(10 g) = 2.25 W/kg



DIGITAL EMC CO., LTD

DUT: Dipole 5000 MHz; Type: D5GHzV2; Serial: D5GHzV2 - SN:1103

Communication System: CW; Frequency: 5200 MHz; Duty Cycle: 1:1

Medium parameters used: $f = 5200$ MHz; $\sigma = 5.188$ mho/m; $\epsilon_r = 47.339$; $\rho = 1000$ kg/m³

Phantom section: Flat Section

DASY5 Configuration:

Probe: EX3DV4 - SN3643; ConvF(4.23, 4.23, 4.23); Calibrated: 2012-01-27; ; Electronics: DAE4 Sn1335

Phantom: SAM with CRP_20120521; Type: SAM; Serial: 1679

Measurement SW: DASY52, Version 52.8 (2); SEMCAD X Version 14.6.6 (6477)

Test Date: 2012-09-05; Ambient Temp: 22.3; Tissue Temp: 22.6

Dipole Validation

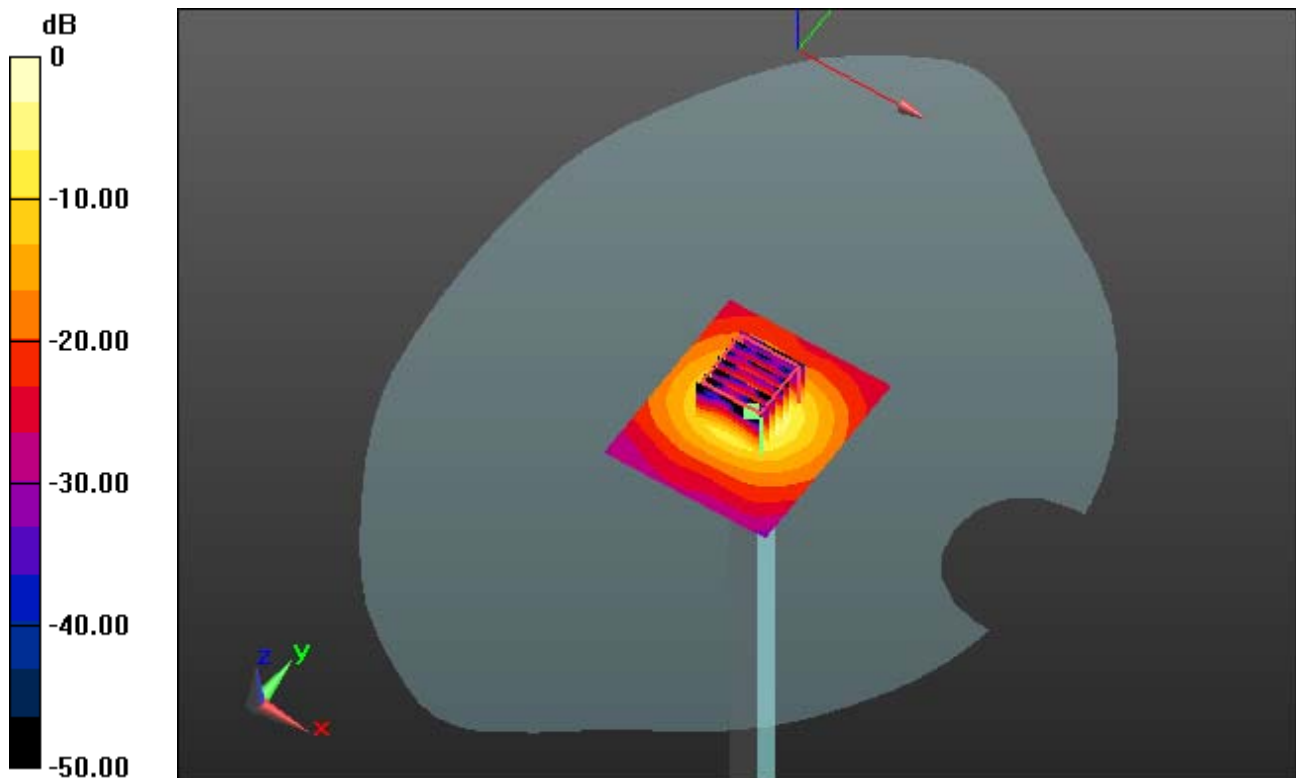
Area Scan (61x71x1): Measurement grid: dx=10mm, dy=10mm

Zoom Scan (7x7x11)/Cube 0: Measurement grid: dx=4mm, dy=4mm, dz=2mm

Power Drift = 0.11 dB

Peak SAR (extrapolated) = 30.842 mW/g

SAR(1 g) = 7.48 W/kg; SAR(10 g) = 2.08 W/kg



0 dB = 15.8 mW/g

DIGITAL EMC CO., LTD

DUT: Dipole 5000 MHz; Type: D5GHzV2; Serial: D5GHzV2 - SN:1103

Communication System: CW; Frequency: 5200 MHz; Duty Cycle: 1:1

Medium parameters used: $f = 5200$ MHz; $\sigma = 5.188$ mho/m; $\epsilon_r = 47.339$; $\rho = 1000$ kg/m³

Phantom section: Flat Section

DASY5 Configuration:

Probe: EX3DV4 - SN3643; ConvF(4.23, 4.23, 4.23); Calibrated: 2012-01-27; ; Electronics: DAE4 Sn1335

Phantom: SAM with CRP_20120521; Type: SAM; Serial: 1679

Measurement SW: DASY52, Version 52.8 (2); SEMCAD X Version 14.6.6 (6477)

Test Date: 2012-09-05; Ambient Temp: 22.3; Tissue Temp: 22.6

Dipole Validation

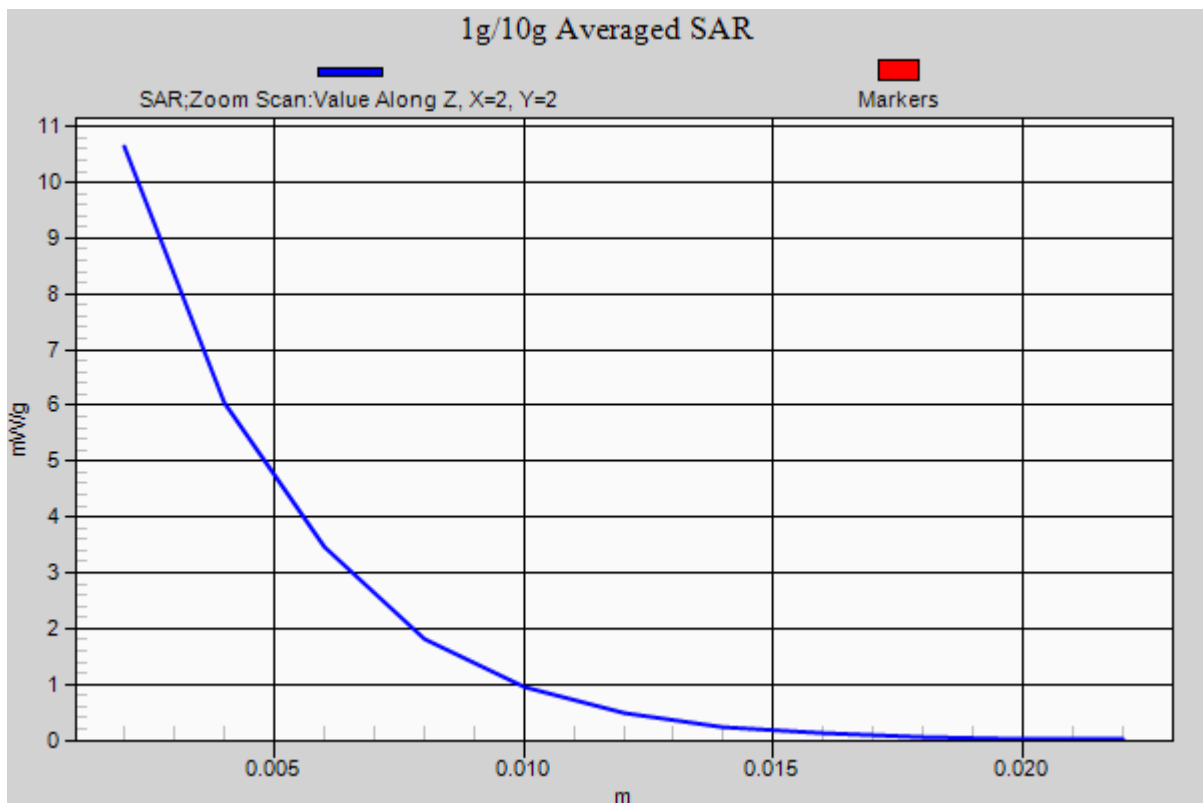
Area Scan (61x71x1): Measurement grid: dx=10mm, dy=10mm

Zoom Scan (7x7x11)/Cube 0: Measurement grid: dx=4mm, dy=4mm, dz=2mm

Power Drift = 0.11 dB

Peak SAR (extrapolated) = 30.842 mW/g

SAR(1 g) = 7.48 W/kg; SAR(10 g) = 2.08 W/kg



DIGITAL EMC CO., LTD

DUT: Dipole 5000 MHz; Type: D5GHzV2; Serial: D5GHzV2 - SN:1103

Communication System: CW; Frequency: 5500 MHz; Duty Cycle: 1:1

Medium parameters used: $f = 5500$ MHz; $\sigma = 5.057$ mho/m; $\epsilon_r = 35.262$; $\rho = 1000$ kg/m³

Phantom section: Flat Section

DASY5 Configuration:

Probe: EX3DV4 - SN3866; ConvF(4.45, 4.45, 4.45); Calibrated: 2012-06-20; ; Electronics: DAE4 Sn1335

Phantom: SAM with CRP_20120521; Type: SAM; Serial: 1679

Measurement SW: DASY52, Version 52.8 (2); SEMCAD X Version 14.6.6 (6477)

Test Date: 2012-09-04; Ambient Temp: 22.4; Tissue Temp: 22.5

Dipole Validation

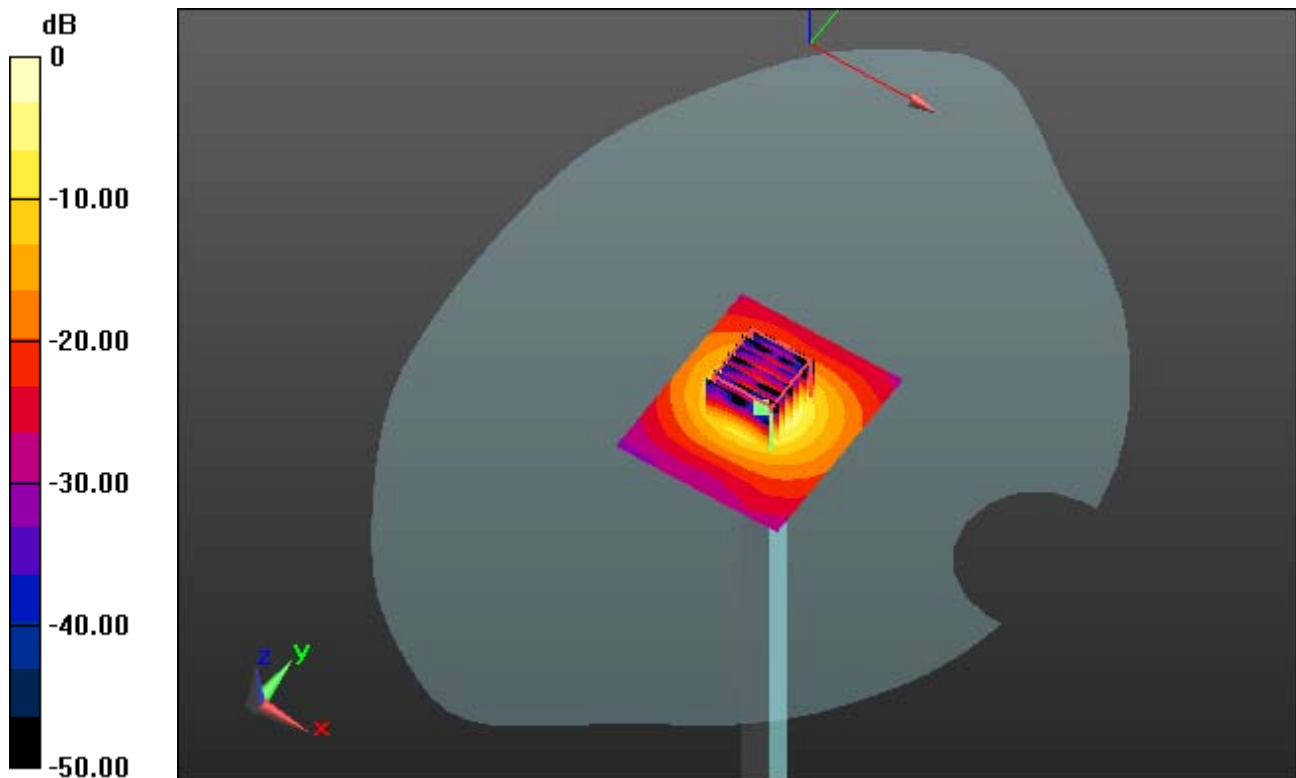
Area Scan (61x71x1): Measurement grid: dx=10mm, dy=10mm

Zoom Scan (7x7x11)/Cube 0: Measurement grid: dx=4mm, dy=4mm, dz=2mm

Power Drift = -0.05 dB

Peak SAR (extrapolated) = 36.855 mW/g

SAR(1 g) = 8.39 W/kg; SAR(10 g) = 2.31 W/kg



0 dB = 17.6 mW/g

DIGITAL EMC CO., LTD

DUT: Dipole 5000 MHz; Type: D5GHzV2; Serial: D5GHzV2 - SN:1103

Communication System: CW; Frequency: 5500 MHz; Duty Cycle: 1:1

Medium parameters used: $f = 5500$ MHz; $\sigma = 5.057$ mho/m; $\epsilon_r = 35.262$; $\rho = 1000$ kg/m³

Phantom section: Flat Section

DASY5 Configuration:

Probe: EX3DV4 - SN3866; ConvF(4.45, 4.45, 4.45); Calibrated: 2012-06-20; ; Electronics: DAE4 Sn1335

Phantom: SAM with CRP_20120521; Type: SAM; Serial: 1679

Measurement SW: DASY52, Version 52.8 (2); SEMCAD X Version 14.6.6 (6477)

Test Date: 2012-09-04; Ambient Temp: 22.4; Tissue Temp: 22.5

Dipole Validation

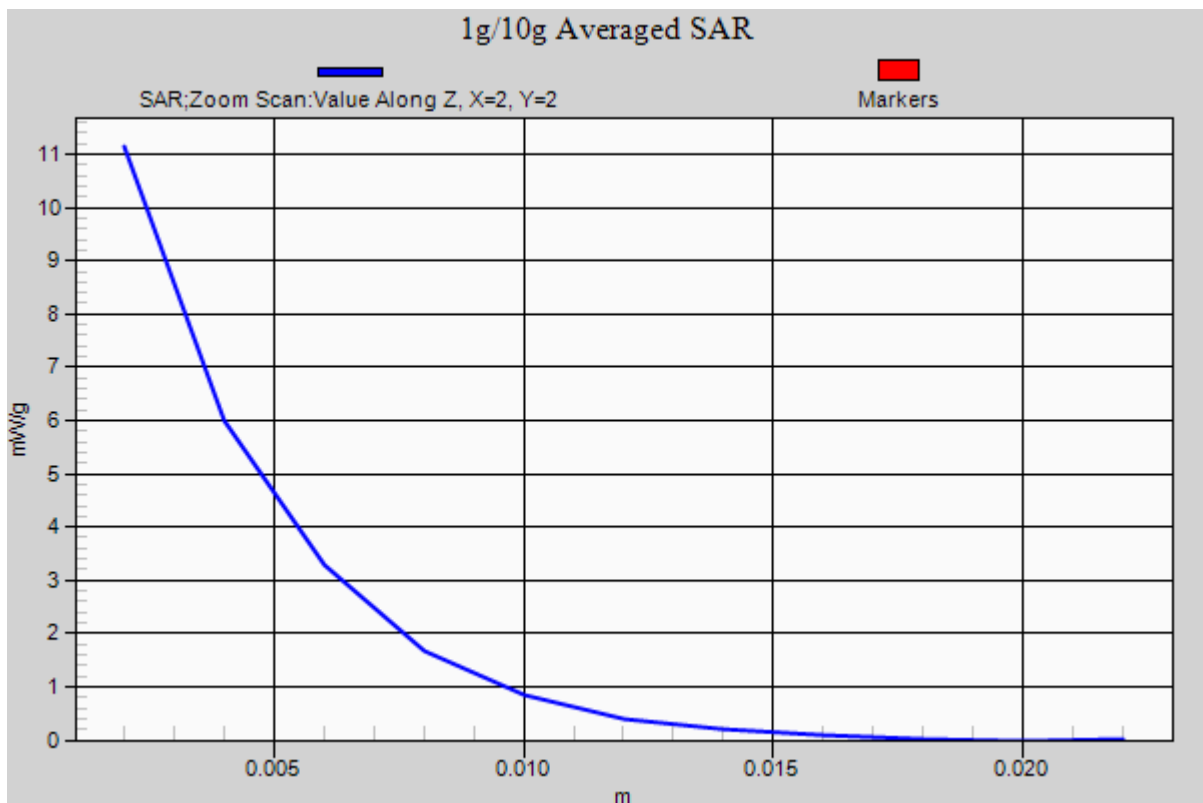
Area Scan (61x71x1): Measurement grid: dx=10mm, dy=10mm

Zoom Scan (7x7x11)/Cube 0: Measurement grid: dx=4mm, dy=4mm, dz=2mm

Power Drift = -0.05 dB

Peak SAR (extrapolated) = 36.855 mW/g

SAR(1 g) = 8.39 W/kg; SAR(10 g) = 2.31 W/kg



DIGITAL EMC CO., LTD

DUT: Dipole 5000 MHz; Type: D5GHzV2; Serial: D5GHzV2 - SN:1103

Communication System: CW; Frequency: 5500 MHz; Duty Cycle: 1:1

Medium parameters used: $f = 5500$ MHz; $\sigma = 5.606$ mho/m; $\epsilon_r = 46.871$; $\rho = 1000$ kg/m³

Phantom section: Flat Section

DASY5 Configuration:

Probe: EX3DV4 - SN3866; ConvF(3.86, 3.86, 3.86); Calibrated: 2012-06-20; ; Electronics: DAE4 Sn1335

Phantom: SAM with CRP_20120521; Type: SAM; Serial: 1679

Measurement SW: DASY52, Version 52.8 (2); SEMCAD X Version 14.6.6 (6477)

Test Date: 2012-09-05; Ambient Temp: 22.3; Tissue Temp: 22.6

Dipole Validation

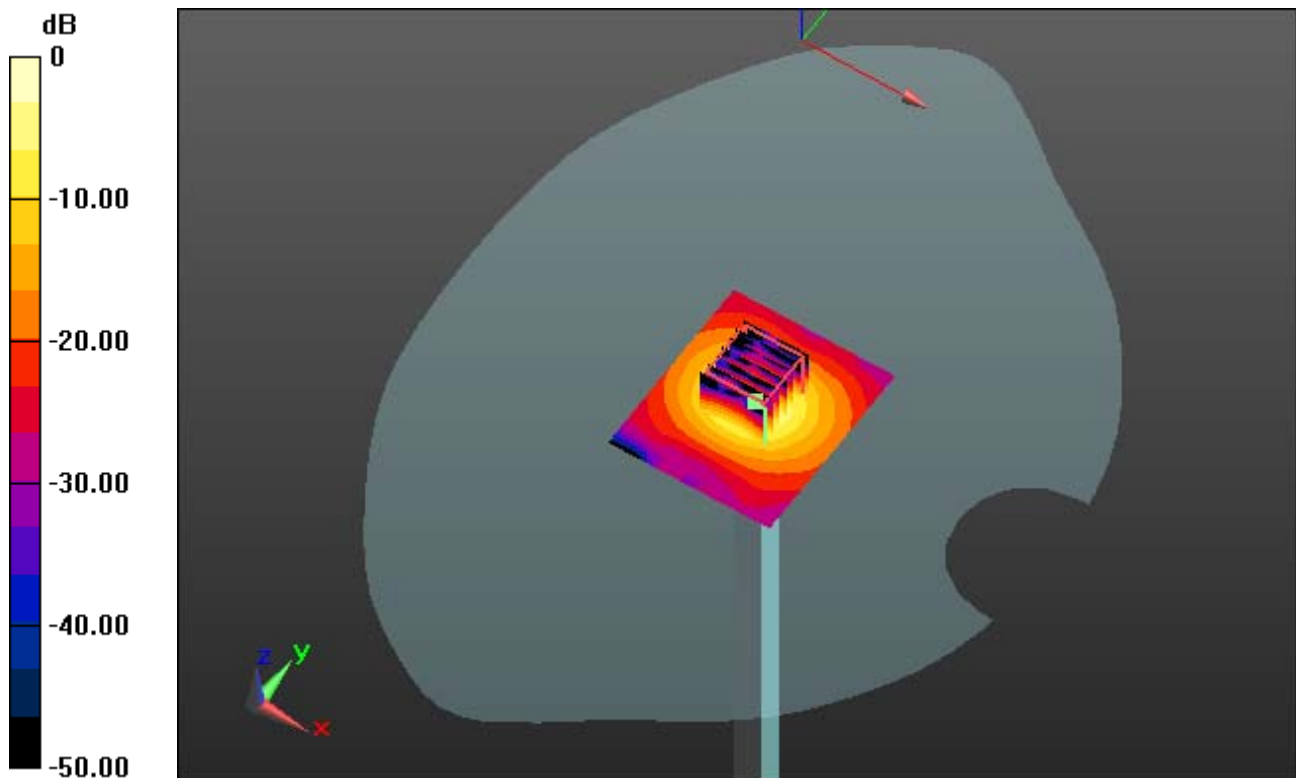
Area Scan (61x71x1): Measurement grid: dx=10mm, dy=10mm

Zoom Scan (7x7x11)/Cube 0: Measurement grid: dx=4mm, dy=4mm, dz=2mm

Power Drift = 0.04 dB

Peak SAR (extrapolated) = 34.801 mW/g

SAR(1 g) = 7.96 W/kg; SAR(10 g) = 2.18 W/kg



0 dB = 17.1 mW/g

DIGITAL EMC CO., LTD

DUT: Dipole 5000 MHz; Type: D5GHzV2; Serial: D5GHzV2 - SN:1103

Communication System: CW; Frequency: 5500 MHz; Duty Cycle: 1:1

Medium parameters used: $f = 5500$ MHz; $\sigma = 5.606$ mho/m; $\epsilon_r = 46.871$; $\rho = 1000$ kg/m³

Phantom section: Flat Section

DASY5 Configuration:

Probe: EX3DV4 - SN3866; ConvF(3.86, 3.86, 3.86); Calibrated: 2012-06-20; ; Electronics: DAE4 Sn1335

Phantom: SAM with CRP_20120521; Type: SAM; Serial: 1679

Measurement SW: DASY52, Version 52.8 (2); SEMCAD X Version 14.6.6 (6477)

Test Date: 2012-09-05; Ambient Temp: 22.3; Tissue Temp: 22.6

Dipole Validation

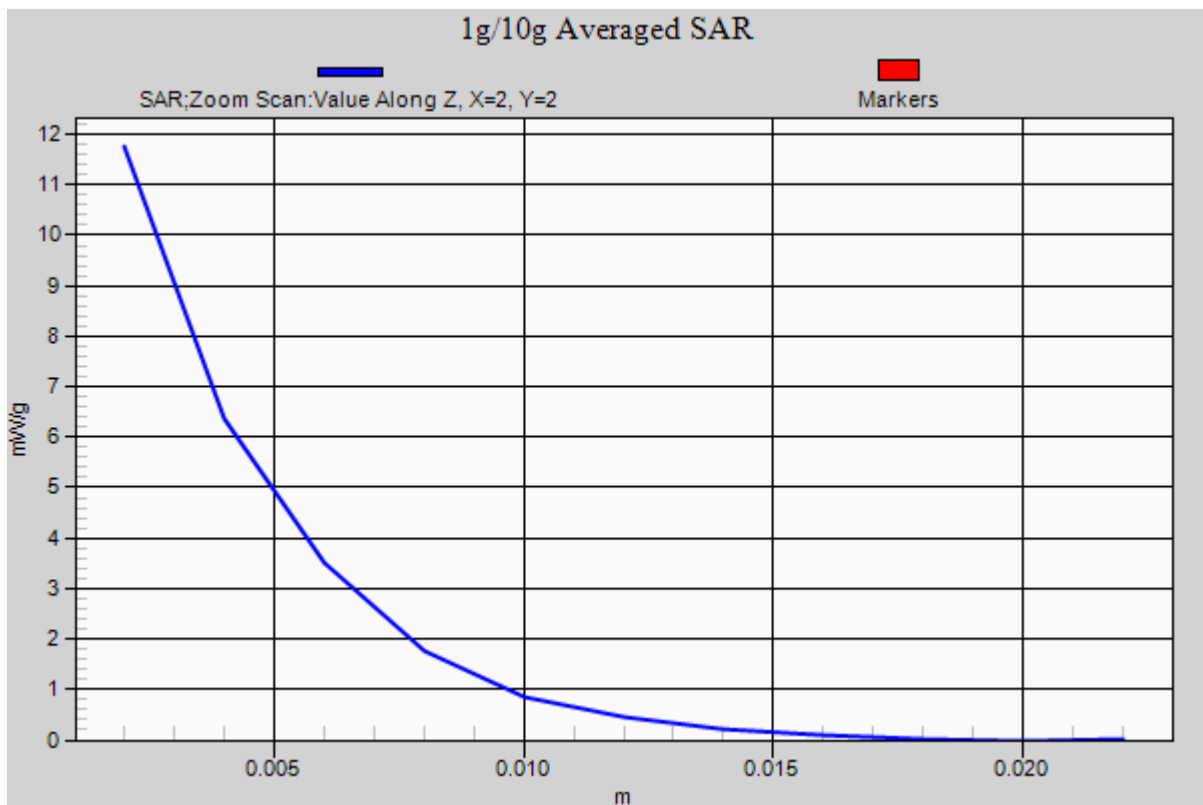
Area Scan (61x71x1): Measurement grid: dx=10mm, dy=10mm

Zoom Scan (7x7x11)/Cube 0: Measurement grid: dx=4mm, dy=4mm, dz=2mm

Power Drift = 0.04 dB

Peak SAR (extrapolated) = 34.801 mW/g

SAR(1 g) = 7.96 W/kg; SAR(10 g) = 2.18 W/kg



DIGITAL EMC CO., LTD

DUT: Dipole 5000 MHz; Type: D5GHzV2; Serial: D5GHzV2 - SN:1103

Communication System: CW; Frequency: 5800 MHz; Duty Cycle: 1:1

Medium parameters used: $f = 5800$ MHz; $\sigma = 5.406$ mho/m; $\epsilon_r = 34.69$; $\rho = 1000$ kg/m³

Phantom section: Flat Section

DASY5 Configuration:

Probe: EX3DV4 - SN3643; ConvF(4.16, 4.16, 4.16); Calibrated: 2012-01-27; ; Electronics: DAE4 Sn1335

Phantom: SAM with CRP_20120521; Type: SAM; Serial: 1679

Measurement SW: DASY52, Version 52.8 (2); SEMCAD X Version 14.6.6 (6477)

Test Date: 2012-09-04; Ambient Temp: 22.4; Tissue Temp: 22.5

Dipole Validation

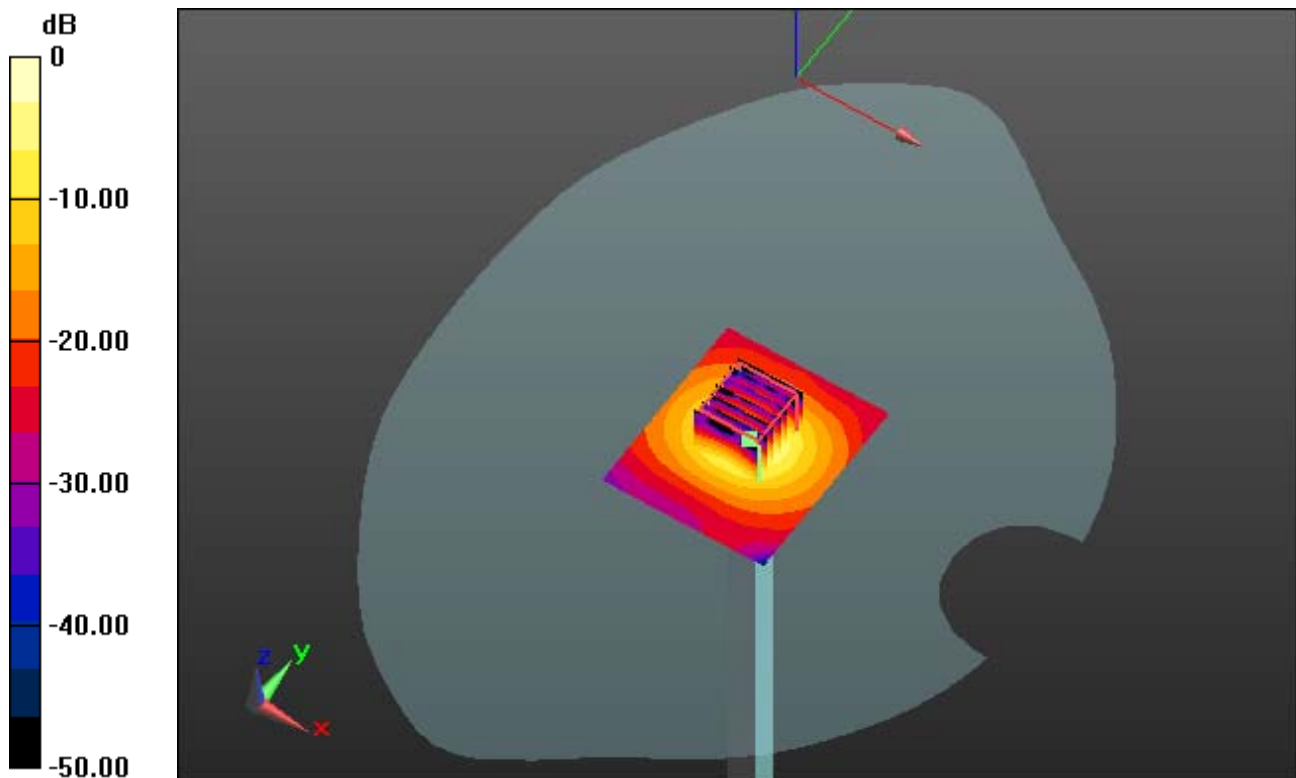
Area Scan (61x71x1): Measurement grid: dx=10mm, dy=10mm

Zoom Scan (7x7x11)/Cube 0: Measurement grid: dx=4mm, dy=4mm, dz=2mm

Power Drift = 0.05 dB

Peak SAR (extrapolated) = 34.571 mW/g

SAR(1 g) = 8.35 W/kg; SAR(10 g) = 2.34 W/kg



0 dB = 17.6 mW/g

DIGITAL EMC CO., LTD

DUT: Dipole 5000 MHz; Type: D5GHzV2; Serial: D5GHzV2 - SN:1103

Communication System: CW; Frequency: 5800 MHz; Duty Cycle: 1:1
Medium parameters used: $f = 5800$ MHz; $\sigma = 5.406$ mho/m; $\epsilon_r = 34.69$; $\rho = 1000$ kg/m³
Phantom section: Flat Section

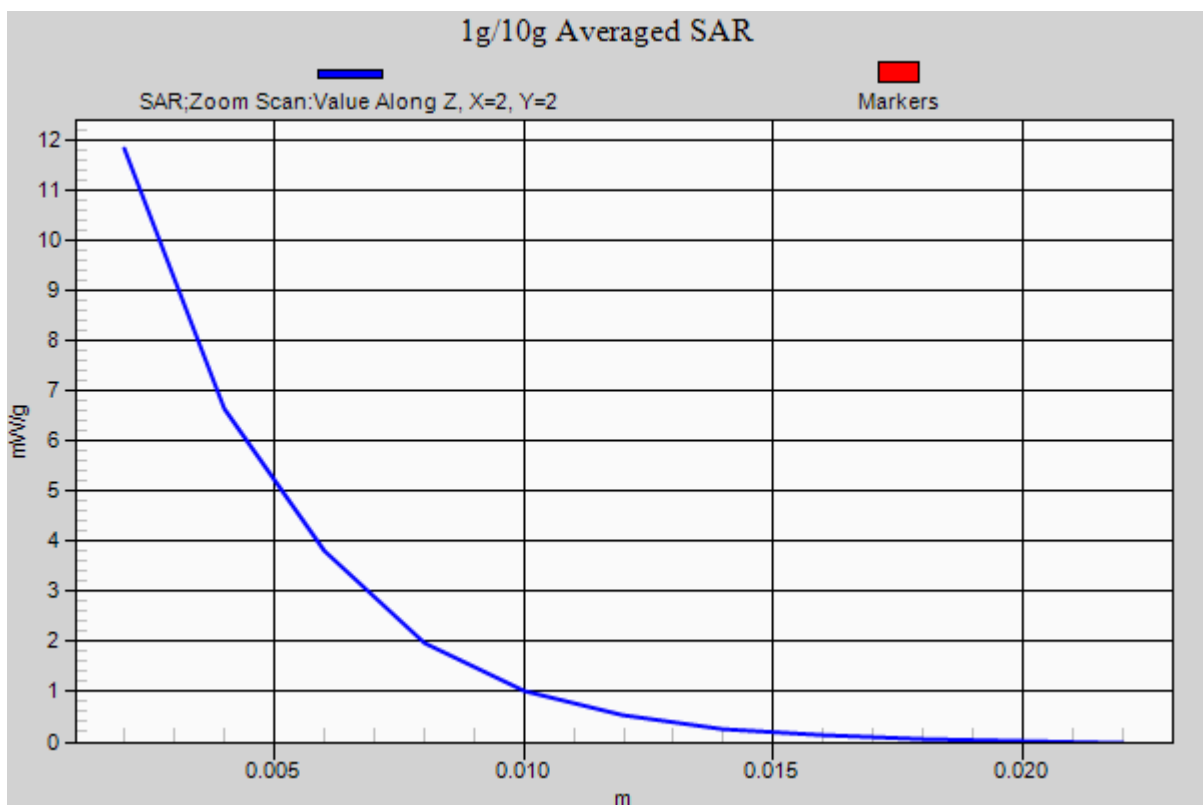
DASY5 Configuration:

Probe: EX3DV4 - SN3643; ConvF(4.16, 4.16, 4.16); Calibrated: 2012-01-27; ; Electronics: DAE4 Sn1335
Phantom: SAM with CRP_20120521; Type: SAM; Serial: 1679
Measurement SW: DASY52, Version 52.8 (2); SEMCAD X Version 14.6.6 (6477)

Test Date: 2012-09-04; Ambient Temp: 22.4; Tissue Temp: 22.5

Dipole Validation

Area Scan (61x71x1): Measurement grid: dx=10mm, dy=10mm
Zoom Scan (7x7x11)/Cube 0: Measurement grid: dx=4mm, dy=4mm, dz=2mm
Power Drift = 0.05 dB
Peak SAR (extrapolated) = 34.571 mW/g
SAR(1 g) = 8.35 W/kg; SAR(10 g) = 2.34 W/kg



DIGITAL EMC CO., LTD

DUT: Dipole 5000 MHz; Type: D5GHzV2; Serial: D5GHzV2 - SN:1103

Communication System: CW; Frequency: 5800 MHz; Duty Cycle: 1:1

Medium parameters used: $f = 5800$ MHz; $\sigma = 6.021$ mho/m; $\epsilon_r = 46.282$; $\rho = 1000$ kg/m³

Phantom section: Flat Section

DASY5 Configuration:

Probe: EX3DV4 - SN3643; ConvF(3.8, 3.8, 3.8); Calibrated: 2012-01-27; ; Electronics: DAE4 Sn1335

Phantom: SAM with CRP_20120521; Type: SAM; Serial: 1679

Measurement SW: DASY52, Version 52.8 (2); SEMCAD X Version 14.6.6 (6477)

Test Date: 2012-09-05; Ambient Temp: 22.3; Tissue Temp: 22.6

Dipole Validation

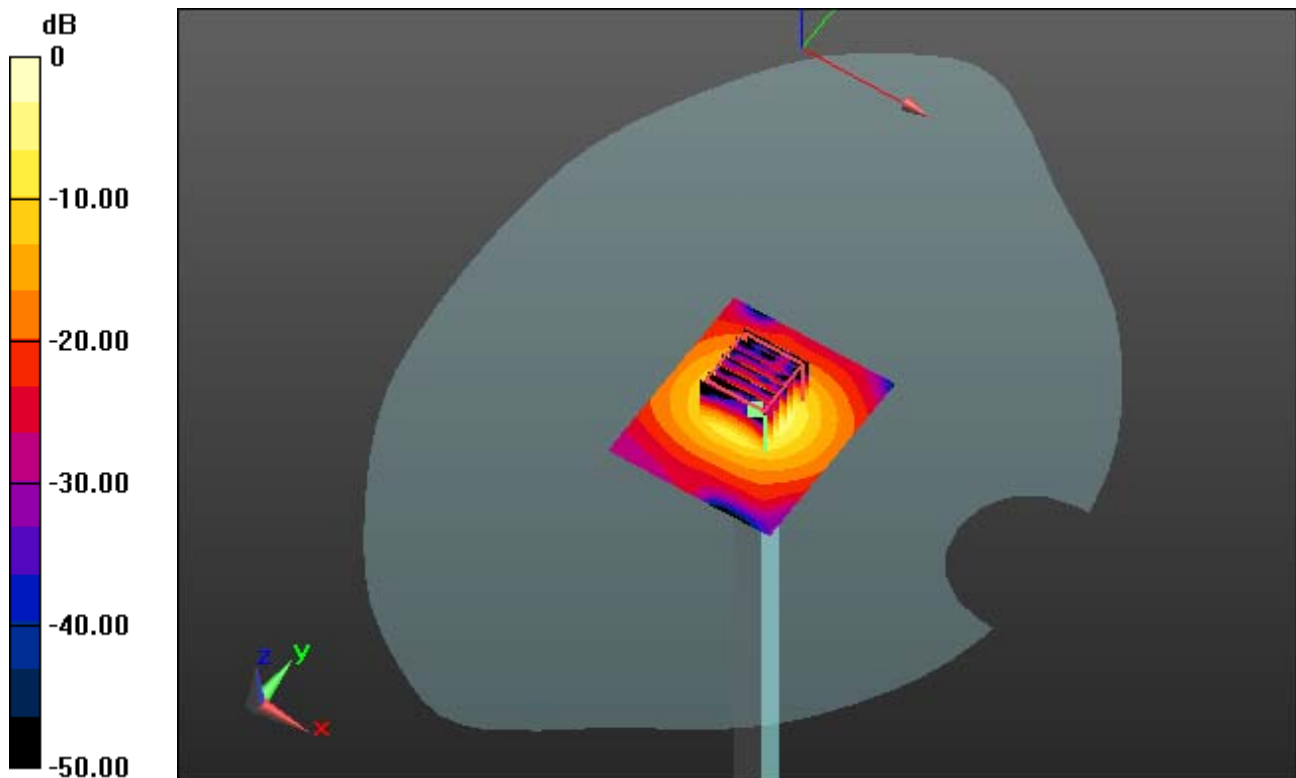
Area Scan (61x71x1): Measurement grid: dx=10mm, dy=10mm

Zoom Scan (7x7x11)/Cube 0: Measurement grid: dx=4mm, dy=4mm, dz=2mm

Power Drift = 0.01 dB

Peak SAR (extrapolated) = 27.187 mW/g

SAR(1 g) = 7.08 W/kg; SAR(10 g) = 1.98 W/kg



0 dB = 14.9 mW/g

DIGITAL EMC CO., LTD

DUT: Dipole 5000 MHz; Type: D5GHzV2; Serial: D5GHzV2 - SN:1103

Communication System: CW; Frequency: 5800 MHz; Duty Cycle: 1:1

Medium parameters used: $f = 5800$ MHz; $\sigma = 6.021$ mho/m; $\epsilon_r = 46.282$; $\rho = 1000$ kg/m³

Phantom section: Flat Section

DASY5 Configuration:

Probe: EX3DV4 - SN3643; ConvF(3.8, 3.8, 3.8); Calibrated: 2012-01-27; ; Electronics: DAE4 Sn1335

Phantom: SAM with CRP_20120521; Type: SAM; Serial: 1679

Measurement SW: DASY52, Version 52.8 (2); SEMCAD X Version 14.6.6 (6477)

Test Date: 2012-09-05; Ambient Temp: 22.3; Tissue Temp: 22.6

Dipole Validation

Area Scan (61x71x1): Measurement grid: dx=10mm, dy=10mm

Zoom Scan (7x7x11)/Cube 0: Measurement grid: dx=4mm, dy=4mm, dz=2mm

Power Drift = 0.01 dB

Peak SAR (extrapolated) = 27.187 mW/g

SAR(1 g) = 7.08 W/kg; SAR(10 g) = 1.98 W/kg

