

## SAR Dipole Validation Plots

# DIGITAL EMC CO., LTD

**DUT: Dipole 835 MHz; Type: D835V2; Serial: D835V2 - SN:464**

Communication System: CW; Frequency: 835 MHz; Duty Cycle: 1:1

Medium parameters used:  $f = 835$  MHz;  $\sigma = 0.896$  mho/m;  $\epsilon_r = 41.735$ ;  $\rho = 1000$  kg/m<sup>3</sup>

Phantom section: Flat Section

## **DASY5 Configuration:**

Probe: EX3DV4 - SN3866; ConvF(8.98, 8.98, 8.98); Calibrated: 2012-06-20; ; Electronics: DAE4 Sn1335

Phantom: SAM with CRP\_20120521; Type: SAM; Serial: 1679

Measurement SW: DASY52, Version 52.8 (2); SEMCAD X Version 14.6.6 (6477)

Test Date: 2012-10-05; Ambient Temp: 22.4; Tissue Temp: 22.6

## **Dipole Validation**

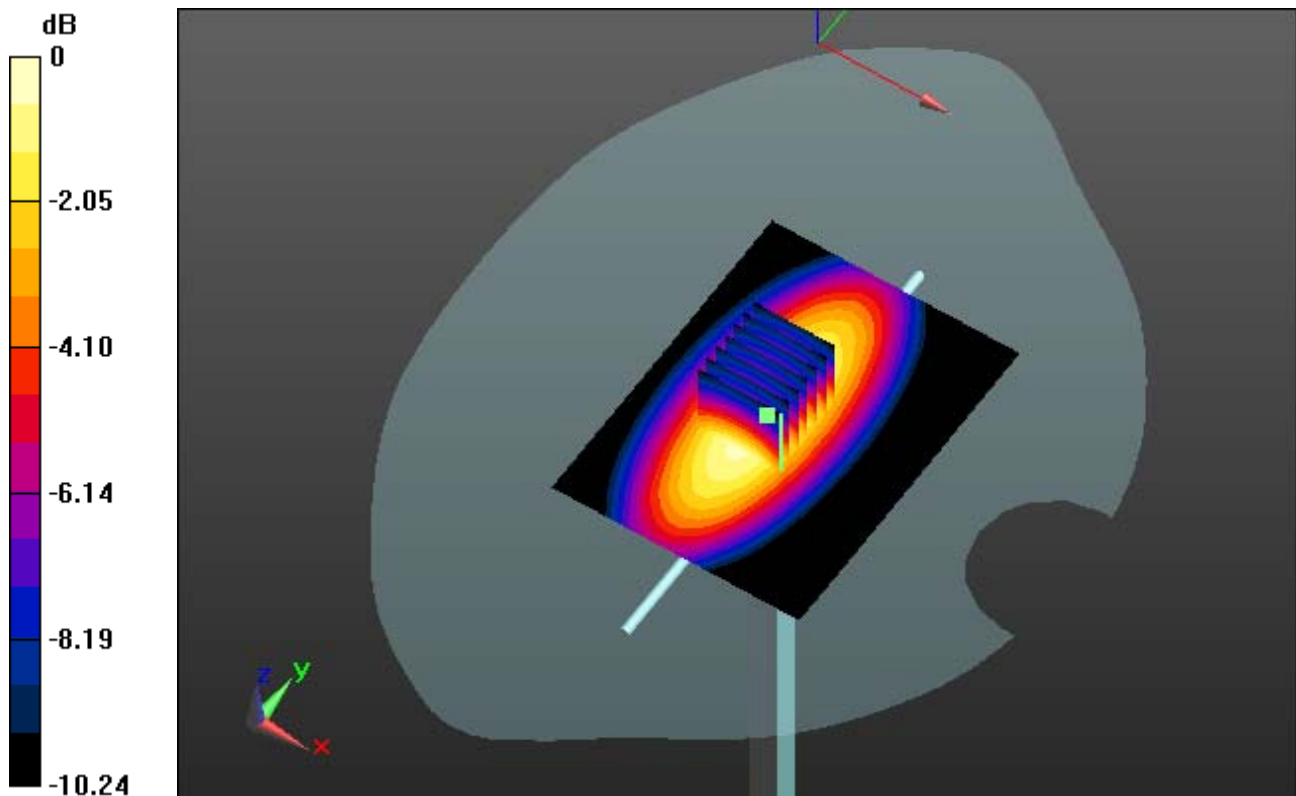
**Area Scan (61x81x1):** Measurement grid: dx=15mm, dy=15mm

**Zoom Scan (7x7x7)/Cube 0:** Measurement grid: dx=5mm, dy=5mm, dz=5mm

Power Drift = 0.06 dB

Peak SAR (extrapolated) = 3.585 mW/g

**SAR(1 g) = 2.38 W/kg; SAR(10 g) = 1.57 W/kg**



0 dB = 2.91 mW/g

# DIGITAL EMC CO., LTD

**DUT: Dipole 835 MHz; Type: D835V2; Serial: D835V2 - SN:464**

Communication System: CW; Frequency: 835 MHz; Duty Cycle: 1:1

Medium parameters used:  $f = 835$  MHz;  $\sigma = 0.896$  mho/m;  $\epsilon_r = 41.735$ ;  $\rho = 1000$  kg/m<sup>3</sup>

Phantom section: Flat Section

## **DASY5 Configuration:**

Probe: EX3DV4 - SN3866; ConvF(8.98, 8.98, 8.98); Calibrated: 2012-06-20; ; Electronics: DAE4 Sn1335

Phantom: SAM with CRP\_20120521; Type: SAM; Serial: 1679

Measurement SW: DASY52, Version 52.8 (2); SEMCAD X Version 14.6.6 (6477)

Test Date: 2012-10-05; Ambient Temp: 22.4; Tissue Temp: 22.6

## **Dipole Validation**

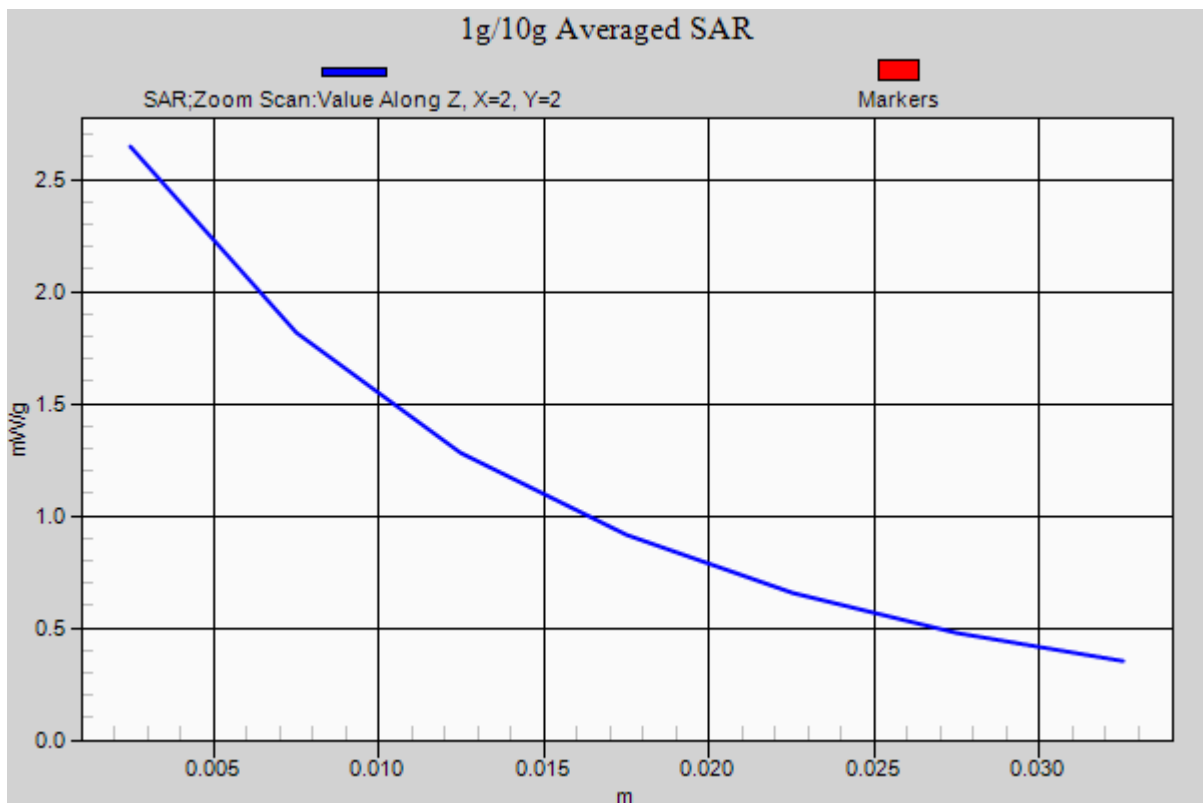
**Area Scan (61x81x1):** Measurement grid: dx=15mm, dy=15mm

**Zoom Scan (7x7x7)/Cube 0:** Measurement grid: dx=5mm, dy=5mm, dz=5mm

Power Drift = 0.06 dB

Peak SAR (extrapolated) = 3.585 mW/g

**SAR(1 g) = 2.38 W/kg; SAR(10 g) = 1.57 W/kg**



# DIGITAL EMC CO., LTD

**DUT: Dipole 835 MHz; Type: D835V2; Serial: D835V2 - SN:464**

Communication System: CW; Frequency: 835 MHz; Duty Cycle: 1:1  
Medium parameters used:  $f = 835$  MHz;  $\sigma = 0.95$  mho/m;  $\epsilon_r = 53.709$ ;  $\rho = 1000$  kg/m<sup>3</sup>  
Phantom section: Flat Section

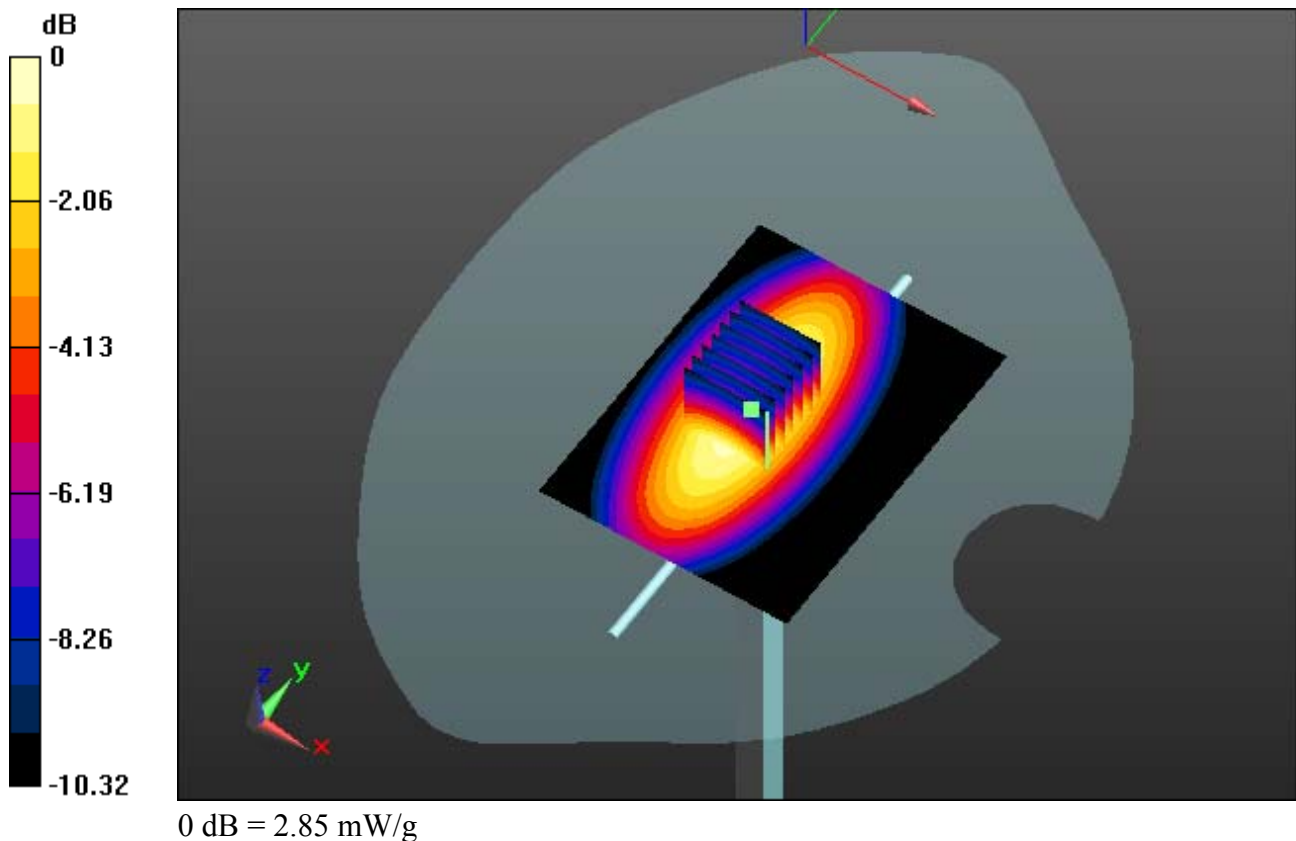
## **DASY5 Configuration:**

Probe: EX3DV4 - SN3866; ConvF(9.03, 9.03, 9.03); Calibrated: 2012-06-20; ; Electronics: DAE4 Sn1335  
Phantom: SAM with CRP\_20120521; Type: SAM; Serial: 1679  
Measurement SW: DASY52, Version 52.8 (2); SEMCAD X Version 14.6.6 (6477)

Test Date: 2012-10-05; Ambient Temp: 22.4; Tissue Temp: 22.6

## **Dipole Validation**

**Area Scan (61x81x1):** Measurement grid: dx=15mm, dy=15mm  
**Zoom Scan (7x7x7)/Cube 0:** Measurement grid: dx=5mm, dy=5mm, dz=5mm  
\Power Drift = -0.03 dB  
Peak SAR (extrapolated) = 3.498 mW/g  
**SAR(1 g) = 2.34 W/kg; SAR(10 g) = 1.54 W/kg**



# DIGITAL EMC CO., LTD

**DUT: Dipole 835 MHz; Type: D835V2; Serial: D835V2 - SN:464**

Communication System: CW; Frequency: 835 MHz; Duty Cycle: 1:1  
Medium parameters used:  $f = 835$  MHz;  $\sigma = 0.95$  mho/m;  $\epsilon_r = 53.709$ ;  $\rho = 1000$  kg/m<sup>3</sup>  
Phantom section: Flat Section

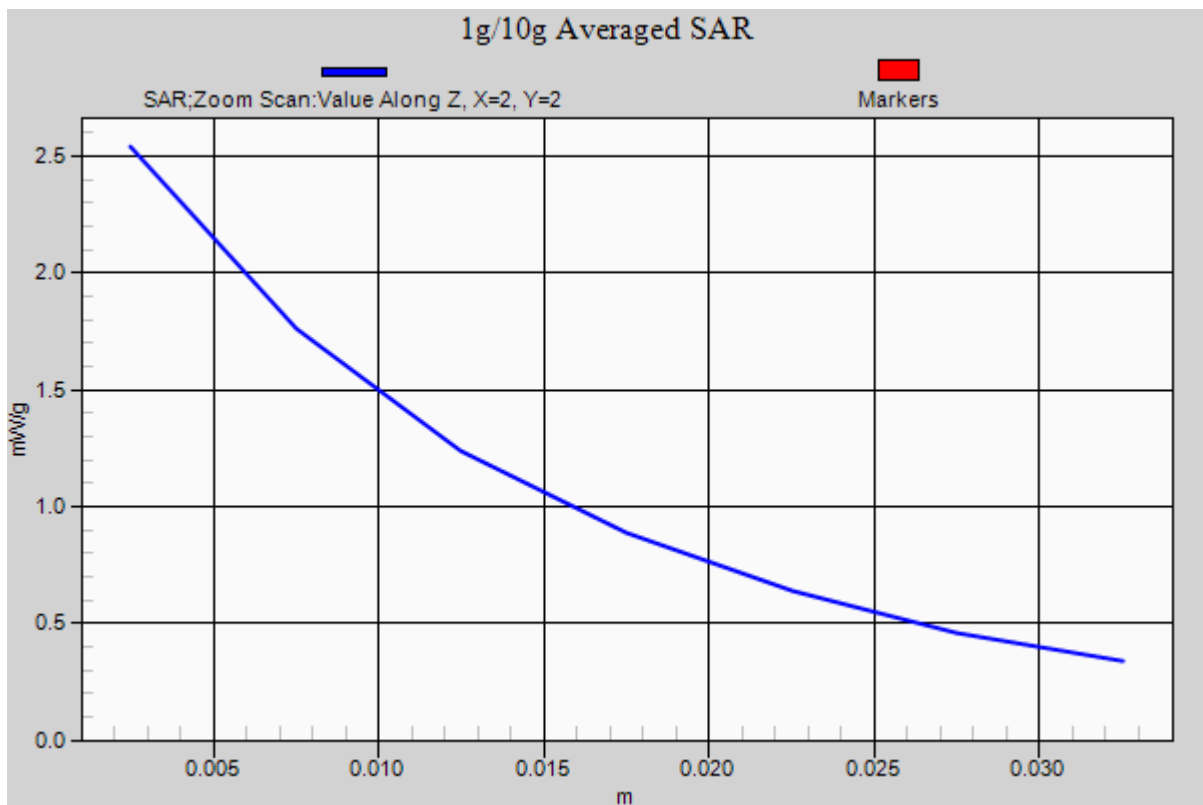
## **DASY5 Configuration:**

Probe: EX3DV4 - SN3866; ConvF(9.03, 9.03, 9.03); Calibrated: 2012-06-20; ; Electronics: DAE4 Sn1335  
Phantom: SAM with CRP\_20120521; Type: SAM; Serial: 1679  
Measurement SW: DASY52, Version 52.8 (2); SEMCAD X Version 14.6.6 (6477)

Test Date: 2012-10-05; Ambient Temp: 22.4; Tissue Temp: 22.6

## **Dipole Validation**

**Area Scan (61x81x1):** Measurement grid: dx=15mm, dy=15mm  
**Zoom Scan (7x7x7)/Cube 0:** Measurement grid: dx=5mm, dy=5mm, dz=5mm  
Power Drift = -0.03 dB  
Peak SAR (extrapolated) = 3.498 mW/g  
**SAR(1 g) = 2.34 W/kg; SAR(10 g) = 1.54 W/kg**



# DIGITAL EMC CO., LTD

**DUT: Dipole 835 MHz; Type: D835V2; Serial: D835V2 - SN:464**

Communication System: CW; Frequency: 835 MHz; Duty Cycle: 1:1

Medium parameters used:  $f = 835$  MHz;  $\sigma = 0.899$  mho/m;  $\epsilon_r = 41.474$ ;  $\rho = 1000$  kg/m<sup>3</sup>

Phantom section: Flat Section

## **DASY5 Configuration:**

Probe: EX3DV4 - SN3866; ConvF(8.98, 8.98, 8.98); Calibrated: 2012-06-20; ; Electronics: DAE4 Sn1335

Phantom: SAM with CRP\_20120521; Type: SAM; Serial: 1679

Measurement SW: DASY52, Version 52.8 (2); SEMCAD X Version 14.6.6 (6477)

Test Date: 2012-10-09; Ambient Temp: 22.1; Tissue Temp: 22.2

## **Dipole Validation**

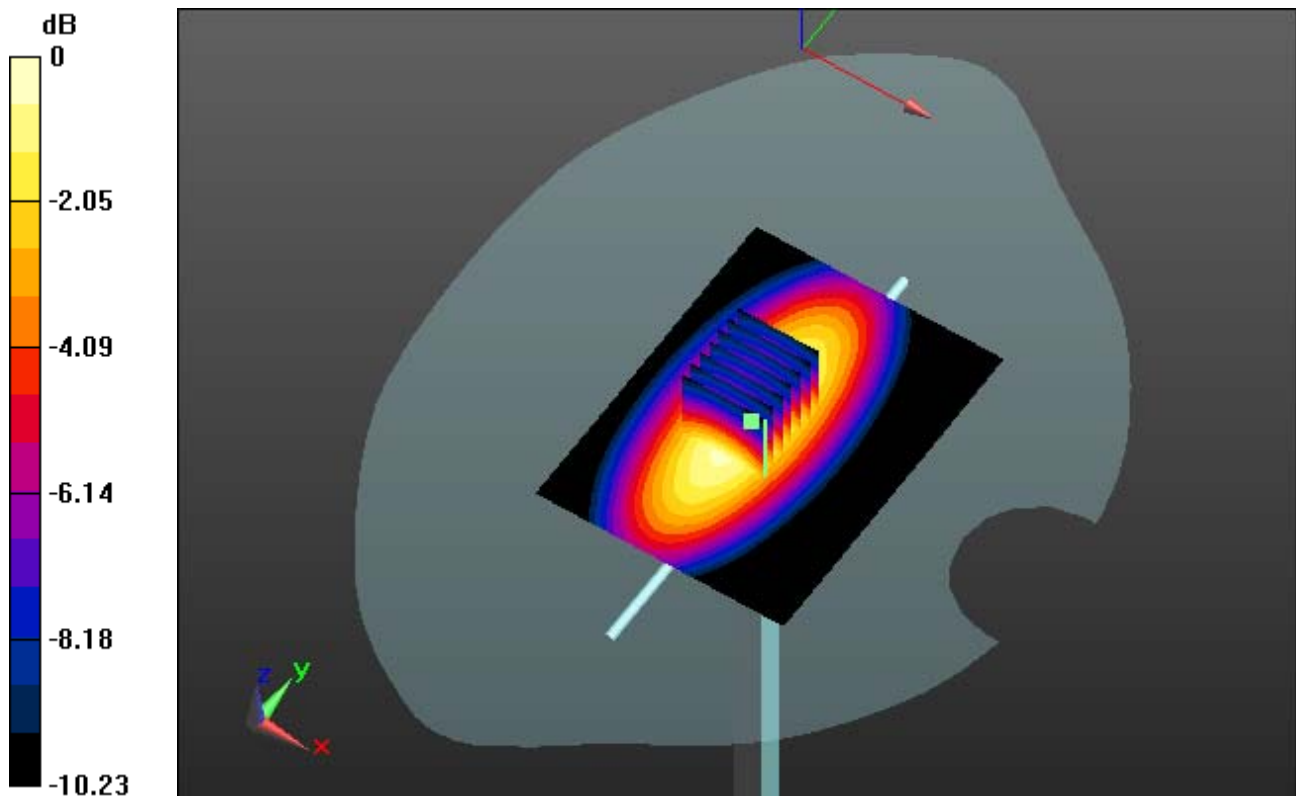
**Area Scan (61x81x1):** Measurement grid: dx=15mm, dy=15mm

**Zoom Scan (7x7x7)/Cube 0:** Measurement grid: dx=5mm, dy=5mm, dz=5mm

Power Drift = 0.04 dB

Peak SAR (extrapolated) = 3.632 mW/g

**SAR(1 g) = 2.42 W/kg; SAR(10 g) = 1.59 W/kg**



0 dB = 2.95 mW/g

# DIGITAL EMC CO., LTD

**DUT: Dipole 835 MHz; Type: D835V2; Serial: D835V2 - SN:464**

Communication System: CW; Frequency: 835 MHz; Duty Cycle: 1:1

Medium parameters used:  $f = 835$  MHz;  $\sigma = 0.899$  mho/m;  $\epsilon_r = 41.474$ ;  $\rho = 1000$  kg/m<sup>3</sup>

Phantom section: Flat Section

## **DASY5 Configuration:**

Probe: EX3DV4 - SN3866; ConvF(8.98, 8.98, 8.98); Calibrated: 2012-06-20; ; Electronics: DAE4 Sn1335

Phantom: SAM with CRP\_20120521; Type: SAM; Serial: 1679

Measurement SW: DASY52, Version 52.8 (2); SEMCAD X Version 14.6.6 (6477)

Test Date: 2012-10-09; Ambient Temp: 22.1; Tissue Temp: 22.2

## **Dipole Validation**

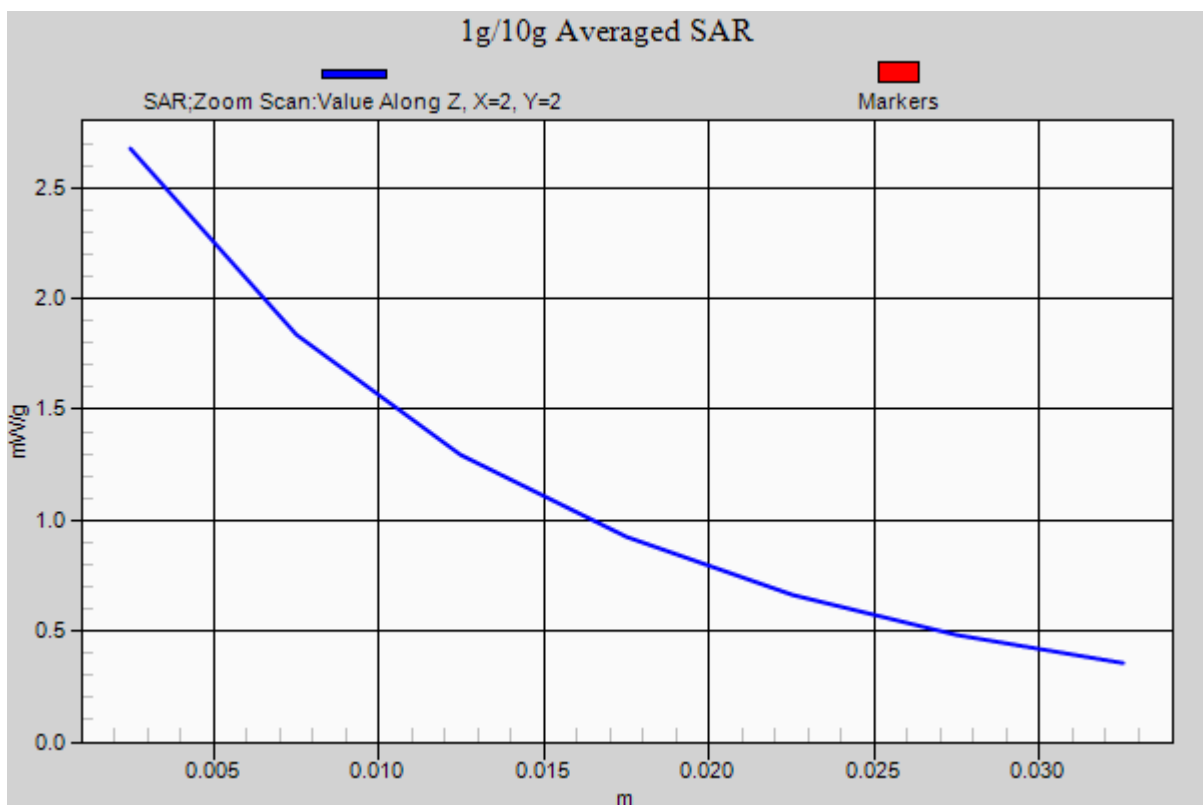
**Area Scan (61x81x1):** Measurement grid: dx=15mm, dy=15mm

**Zoom Scan (7x7x7)/Cube 0:** Measurement grid: dx=5mm, dy=5mm, dz=5mm

Power Drift = 0.04 dB

Peak SAR (extrapolated) = 3.632 mW/g

**SAR(1 g) = 2.42 W/kg; SAR(10 g) = 1.59 W/kg**



# DIGITAL EMC CO., LTD

**DUT: Dipole 835 MHz; Type: D835V2; Serial: D835V2 - SN:464**

Communication System: CW; Frequency: 835 MHz; Duty Cycle: 1:1

Medium parameters used:  $f = 835$  MHz;  $\sigma = 0.955$  mho/m;  $\epsilon_r = 53.066$ ;  $\rho = 1000$  kg/m<sup>3</sup>

Phantom section: Flat Section

## **DASY5 Configuration:**

Probe: EX3DV4 - SN3866; ConvF(9.03, 9.03, 9.03); Calibrated: 2012-06-20; ; Electronics: DAE4 Sn1335

Phantom: SAM with CRP\_20120521; Type: SAM; Serial: 1679

Measurement SW: DASY52, Version 52.8 (2); SEMCAD X Version 14.6.6 (6477)

Test Date: 2012-10-09; Ambient Temp: 22.1; Tissue Temp: 22.2

## **Dipole Validation**

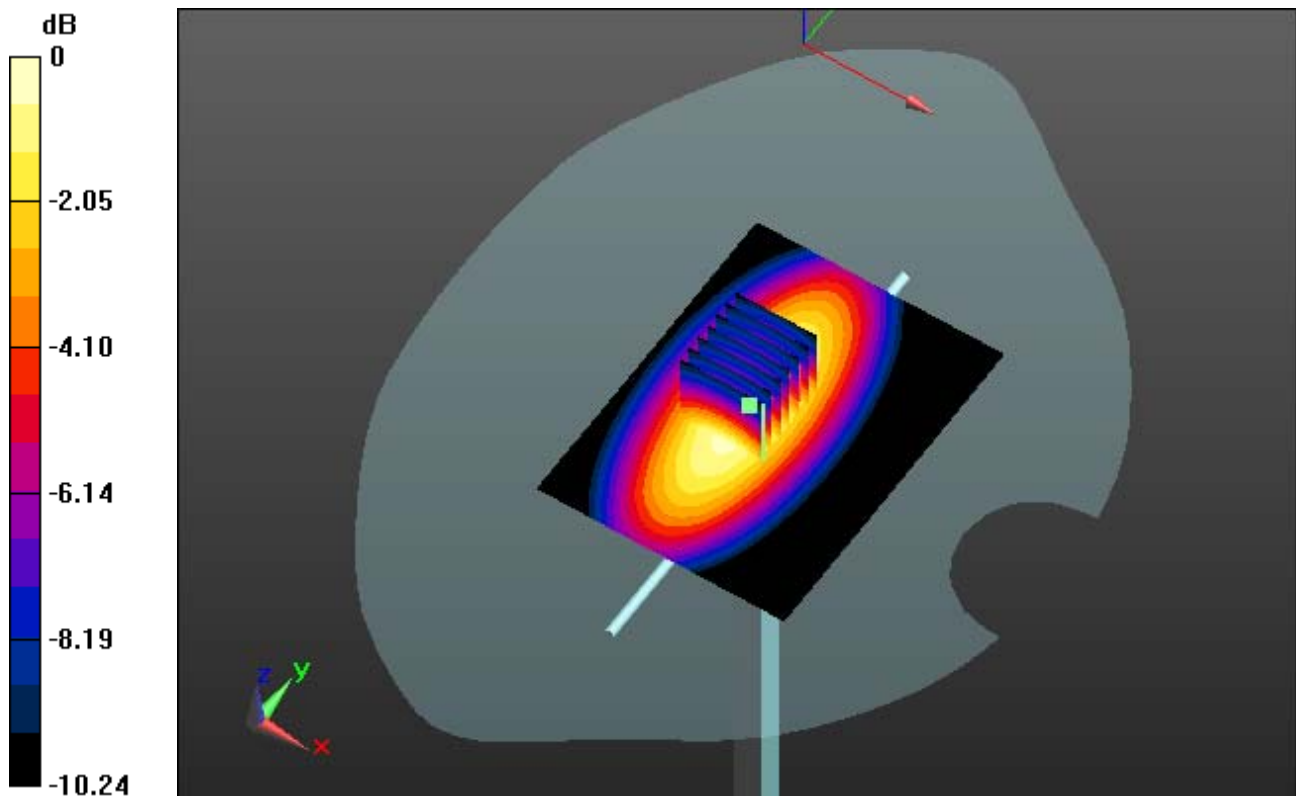
**Area Scan (61x81x1):** Measurement grid: dx=15mm, dy=15mm

**Zoom Scan (7x7x7)/Cube 0:** Measurement grid: dx=5mm, dy=5mm, dz=5mm

Power Drift = 0.01 dB

Peak SAR (extrapolated) = 3.514 mW/g

**SAR(1 g) = 2.36 W/kg; SAR(10 g) = 1.55 W/kg**



0 dB = 2.87 mW/g



# DIGITAL EMC CO., LTD

**DUT: Dipole 835 MHz; Type: D835V2; Serial: D835V2 - SN:464**

Communication System: CW; Frequency: 835 MHz; Duty Cycle: 1:1

Medium parameters used:  $f = 835$  MHz;  $\sigma = 0.955$  mho/m;  $\epsilon_r = 53.066$ ;  $\rho = 1000$  kg/m<sup>3</sup>

Phantom section: Flat Section

## **DASY5 Configuration:**

Probe: EX3DV4 - SN3866; ConvF(9.03, 9.03, 9.03); Calibrated: 2012-06-20; ; Electronics: DAE4 Sn1335

Phantom: SAM with CRP\_20120521; Type: SAM; Serial: 1679

Measurement SW: DASY52, Version 52.8 (2); SEMCAD X Version 14.6.6 (6477)

Test Date: 2012-10-09; Ambient Temp: 22.1; Tissue Temp: 22.2

## **Dipole Validation**

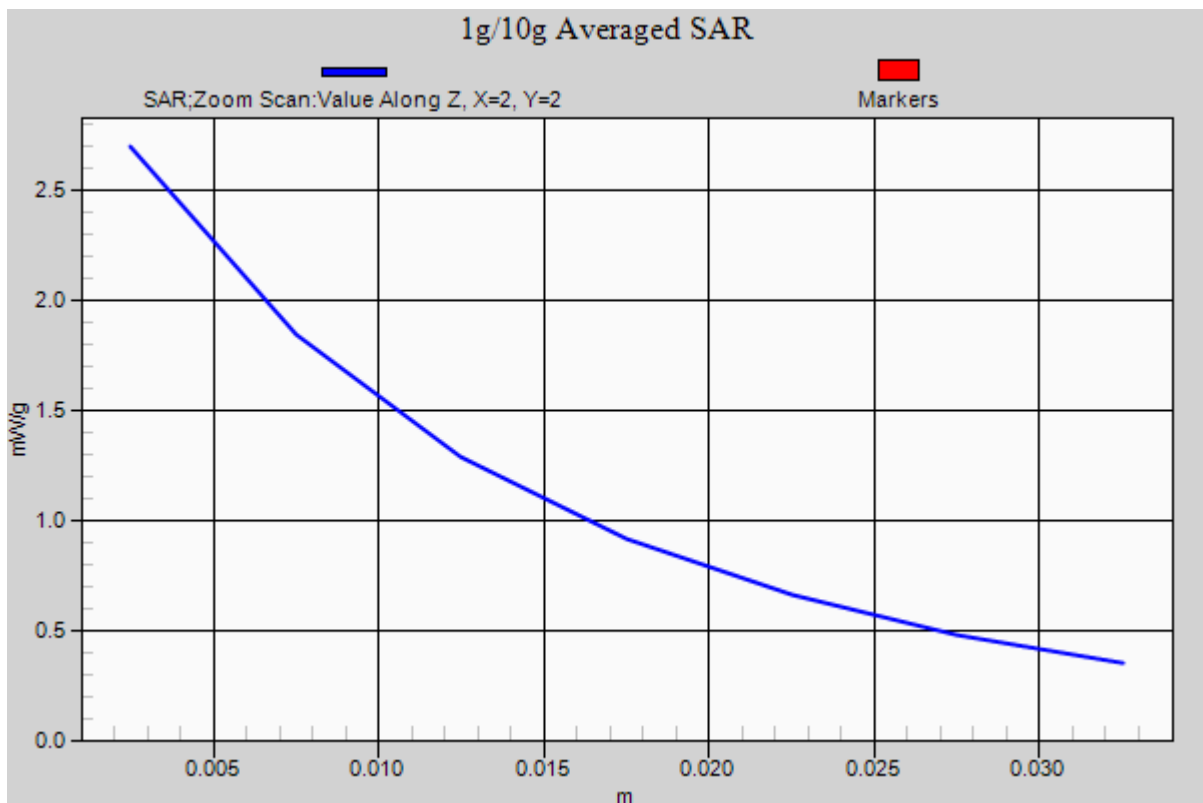
**Area Scan (61x81x1):** Measurement grid: dx=15mm, dy=15mm

**Zoom Scan (7x7x7)/Cube 0:** Measurement grid: dx=5mm, dy=5mm, dz=5mm

Power Drift = 0.01 dB

Peak SAR (extrapolated) = 3.514 mW/g

**SAR(1 g) = 2.36 W/kg; SAR(10 g) = 1.55 W/kg**



# DIGITAL EMC CO., LTD

**DUT: Dipole 1900 MHz; Type: D1900V2; Serial: D1900V2 - SN:5d029**

Communication System: CW; Frequency: 1900 MHz; Duty Cycle: 1:1

Medium parameters used:  $f = 1900$  MHz;  $\sigma = 1.39$  mho/m;  $\epsilon_r = 39.62$ ;  $\rho = 1000$  kg/m<sup>3</sup>

Phantom section: Flat Section

## **DASY5 Configuration:**

Probe: EX3DV4 - SN3866; ConvF(7.76, 7.76, 7.76); Calibrated: 2012-06-20; ; Electronics: DAE4 Sn1335

Phantom: SAM with CRP\_20120521; Type: SAM; Serial: 1679

Measurement SW: DASY52, Version 52.8 (2); SEMCAD X Version 14.6.6 (6477)

Test Date: 2012-10-08; Ambient Temp: 22.3; Tissue Temp: 22.5

## **Dipole Validation**

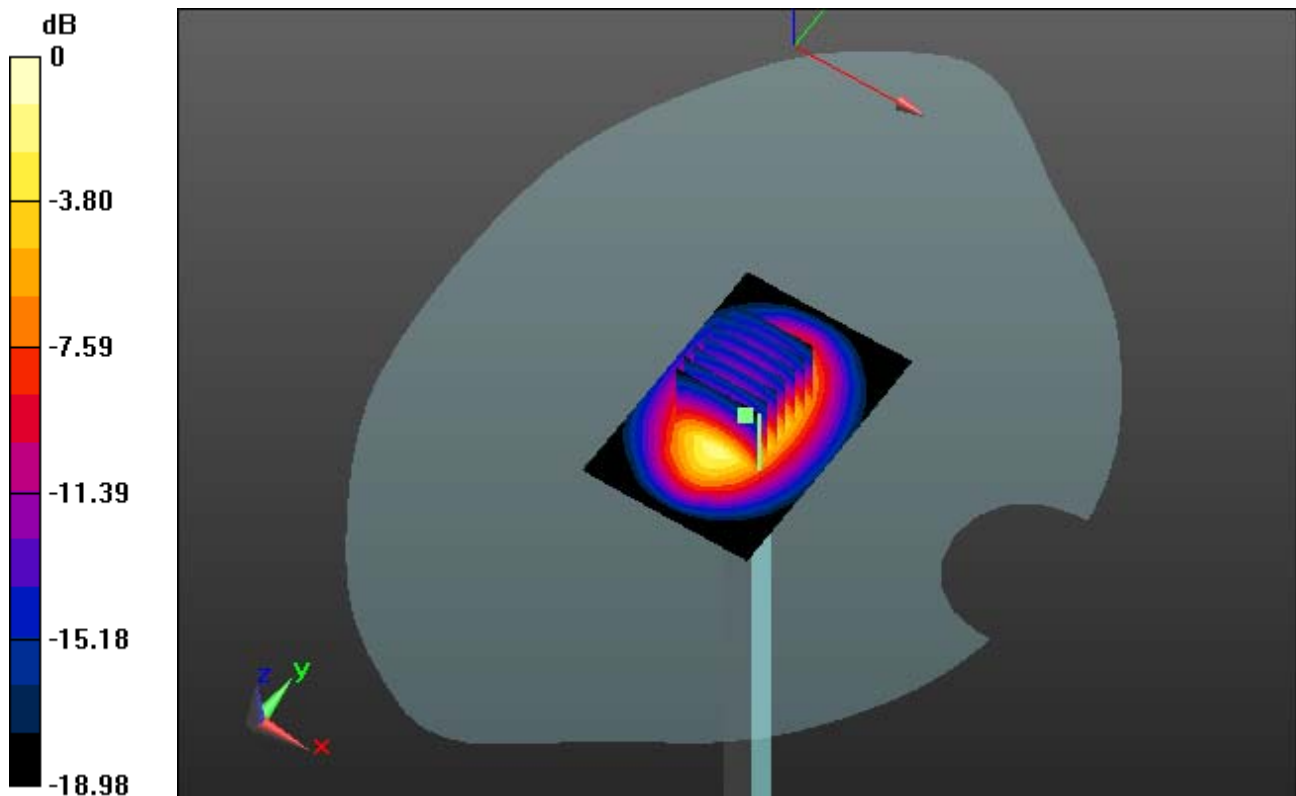
**Area Scan (61x91x1):** Measurement grid: dx=10mm, dy=10mm

**Zoom Scan (7x7x7)/Cube 0:** Measurement grid: dx=5mm, dy=5mm, dz=5mm

Power Drift = -0.00 dB

Peak SAR (extrapolated) = 19.599 mW/g

**SAR(1 g) = 9.94 W/kg; SAR(10 g) = 5.02 W/kg**



0 dB = 13.7 mW/g

# DIGITAL EMC CO., LTD

**DUT: Dipole 1900 MHz; Type: D1900V2; Serial: D1900V2 - SN:5d029**

Communication System: CW; Frequency: 1900 MHz; Duty Cycle: 1:1  
Medium parameters used:  $f = 1900$  MHz;  $\sigma = 1.39$  mho/m;  $\epsilon_r = 39.62$ ;  $\rho = 1000$  kg/m<sup>3</sup>  
Phantom section: Flat Section

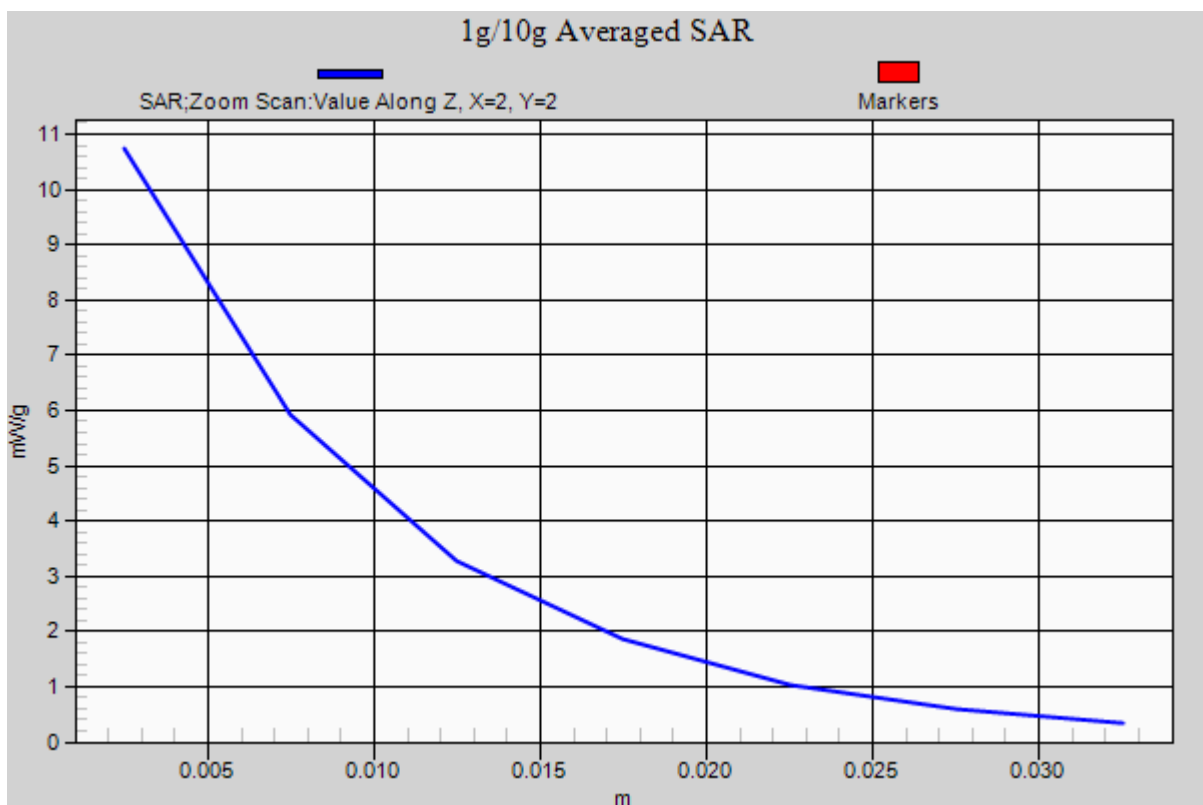
## **DASY5 Configuration:**

Probe: EX3DV4 - SN3866; ConvF(7.76, 7.76, 7.76); Calibrated: 2012-06-20; ; Electronics: DAE4 Sn1335  
Phantom: SAM with CRP\_20120521; Type: SAM; Serial: 1679  
Measurement SW: DASY52, Version 52.8 (2); SEMCAD X Version 14.6.6 (6477)

Test Date: 2012-10-08; Ambient Temp: 22.3; Tissue Temp:22.5

## **Dipole Validation**

**Area Scan (61x91x1):** Measurement grid: dx=10mm, dy=10mm  
**Zoom Scan (7x7x7)/Cube 0:** Measurement grid: dx=5mm, dy=5mm, dz=5mm  
Power Drift = -0.00 dB  
Peak SAR (extrapolated) = 19.599 mW/g  
**SAR(1 g) = 9.94 W/kg; SAR(10 g) = 5.02 W/kg**



# DIGITAL EMC CO., LTD

**DUT: Dipole 1900 MHz; Type: D1900V2; Serial: D1900V2 - SN:5d029**

Communication System: CW; Frequency: 1900 MHz; Duty Cycle: 1:1

Medium parameters used:  $f = 1900$  MHz;  $\sigma = 1.544$  mho/m;  $\epsilon_r = 54.901$ ;  $\rho = 1000$  kg/m<sup>3</sup>

Phantom section: Flat Section

## **DASY5 Configuration:**

Probe: EX3DV4 - SN3866; ConvF(7.34, 7.34, 7.34); Calibrated: 2012-06-20; ; Electronics: DAE4 Sn1335

Phantom: SAM with CRP\_20120521; Type: SAM; Serial: 1679

Measurement SW: DASY52, Version 52.8 (2); SEMCAD X Version 14.6.6 (6477)

Test Date: 2012-10-08; Ambient Temp: 22.3; Tissue Temp: 22.5

## **Dipole Validation**

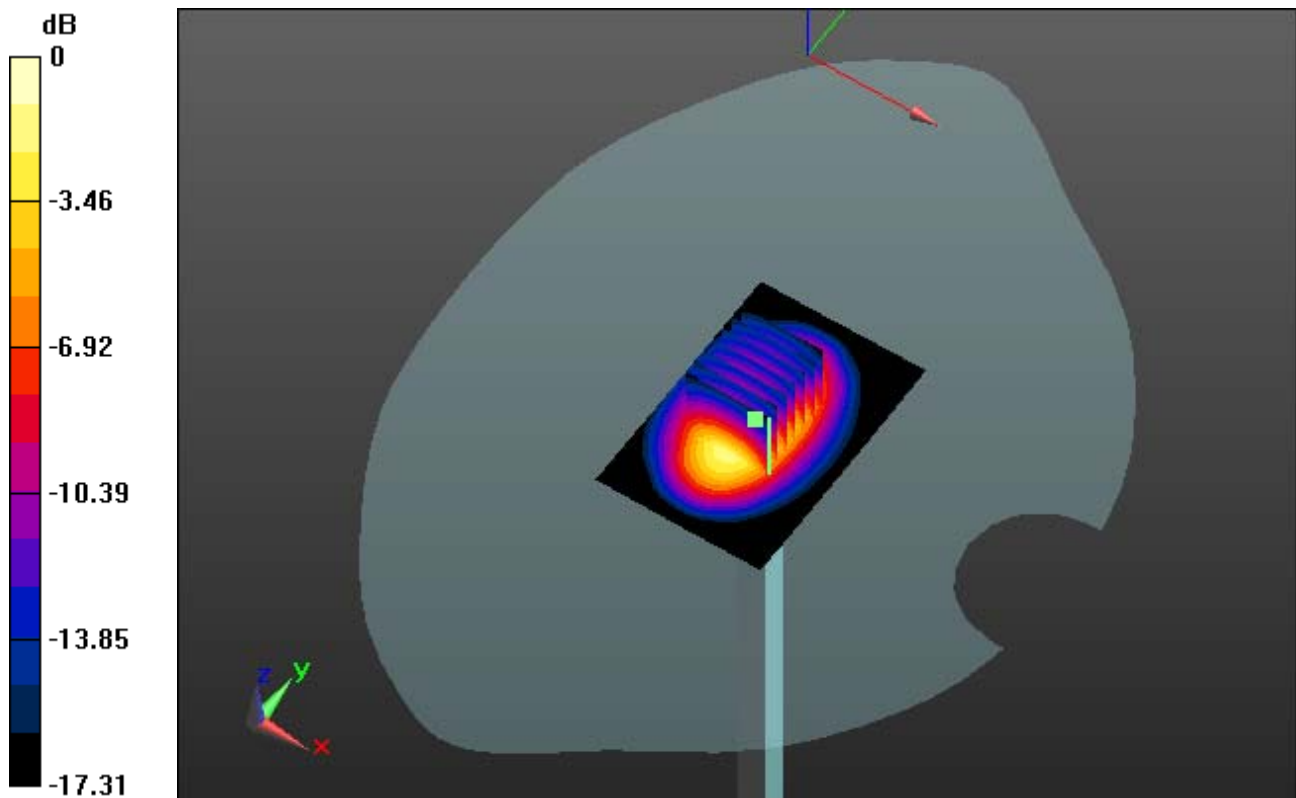
**Area Scan (61x91x1):** Measurement grid: dx=10mm, dy=10mm

**Zoom Scan (7x7x7)/Cube 0:** Measurement grid: dx=5mm, dy=5mm, dz=5mm

Power Drift = 0.07 dB

Peak SAR (extrapolated) = 18.762 mW/g

**SAR(1 g) = 10.1 W/kg; SAR(10 g) = 5.22 W/kg**



0 dB = 13.7 mW/g

# DIGITAL EMC CO., LTD

**DUT: Dipole 1900 MHz; Type: D1900V2; Serial: D1900V2 - SN:5d029**

Communication System: CW; Frequency: 1900 MHz; Duty Cycle: 1:1

Medium parameters used:  $f = 1900$  MHz;  $\sigma = 1.544$  mho/m;  $\epsilon_r = 54.901$ ;  $\rho = 1000$  kg/m<sup>3</sup>

Phantom section: Flat Section

## **DASY5 Configuration:**

Probe: EX3DV4 - SN3866; ConvF(7.34, 7.34, 7.34); Calibrated: 2012-06-20; ; Electronics: DAE4 Sn1335

Phantom: SAM with CRP\_20120521; Type: SAM; Serial: 1679

Measurement SW: DASY52, Version 52.8 (2); SEMCAD X Version 14.6.6 (6477)

Test Date: 2012-10-08; Ambient Temp: 22.3; Tissue Temp: 22.5

## **Dipole Validation**

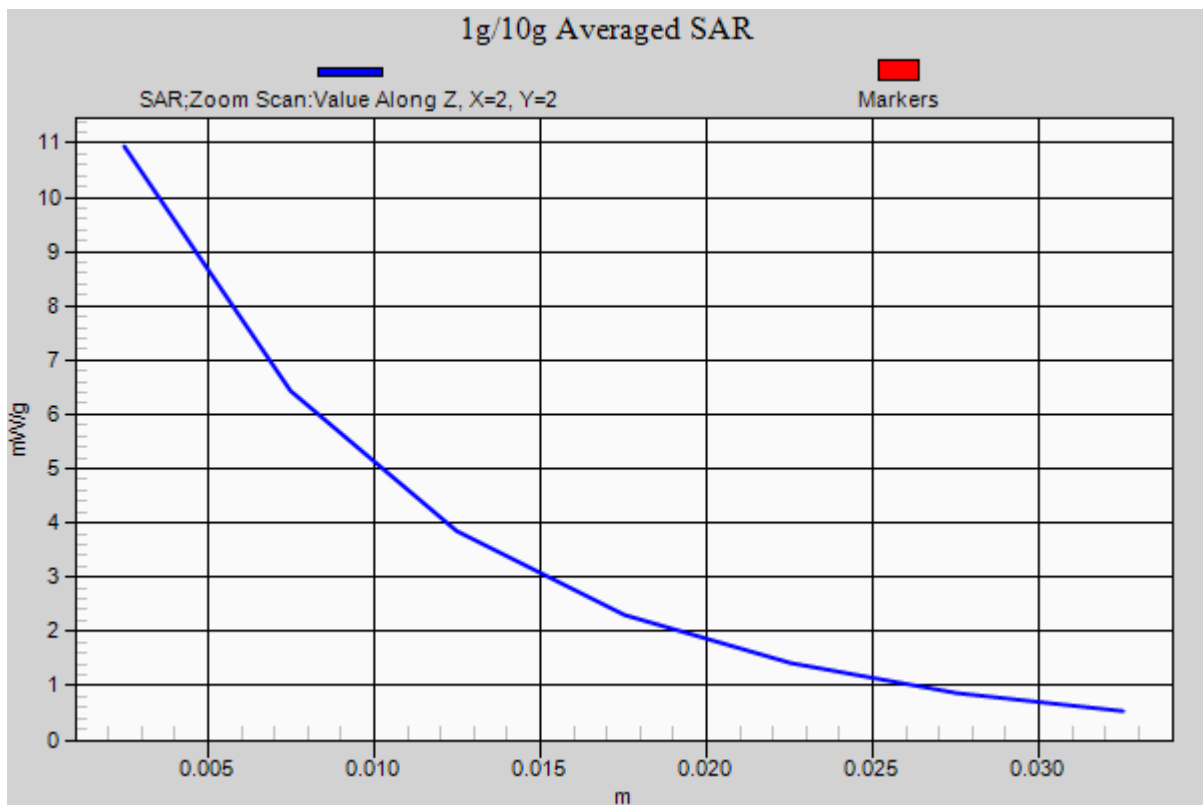
**Area Scan (61x91x1):** Measurement grid: dx=10mm, dy=10mm

**Zoom Scan (7x7x7)/Cube 0:** Measurement grid: dx=5mm, dy=5mm, dz=5mm

Power Drift = 0.07 dB

Peak SAR (extrapolated) = 18.762 mW/g

**SAR(1 g) = 10.1 W/kg; SAR(10 g) = 5.22 W/kg**



# DIGITAL EMC CO., LTD

**DUT: Dipole 1900 MHz; Type: D1900V2; Serial: D1900V2 - SN:5d029**

Communication System: CW; Frequency: 1900 MHz; Duty Cycle: 1:1

Medium parameters used:  $f = 1900$  MHz;  $\sigma = 1.391$  mho/m;  $\epsilon_r = 40.089$ ;  $\rho = 1000$  kg/m<sup>3</sup>

Phantom section: Flat Section

## **DASY5 Configuration:**

Probe: EX3DV4 - SN3866; ConvF(7.76, 7.76, 7.76); Calibrated: 2012-06-20; ; Electronics: DAE4 Sn1335

Phantom: SAM with CRP\_20120521; Type: SAM; Serial: 1679

Measurement SW: DASY52, Version 52.8 (2); SEMCAD X Version 14.6.6 (6477)

Test Date: 2012-10-10; Ambient Temp: 22.4; Tissue Temp: 22.5

## **Dipole Validation**

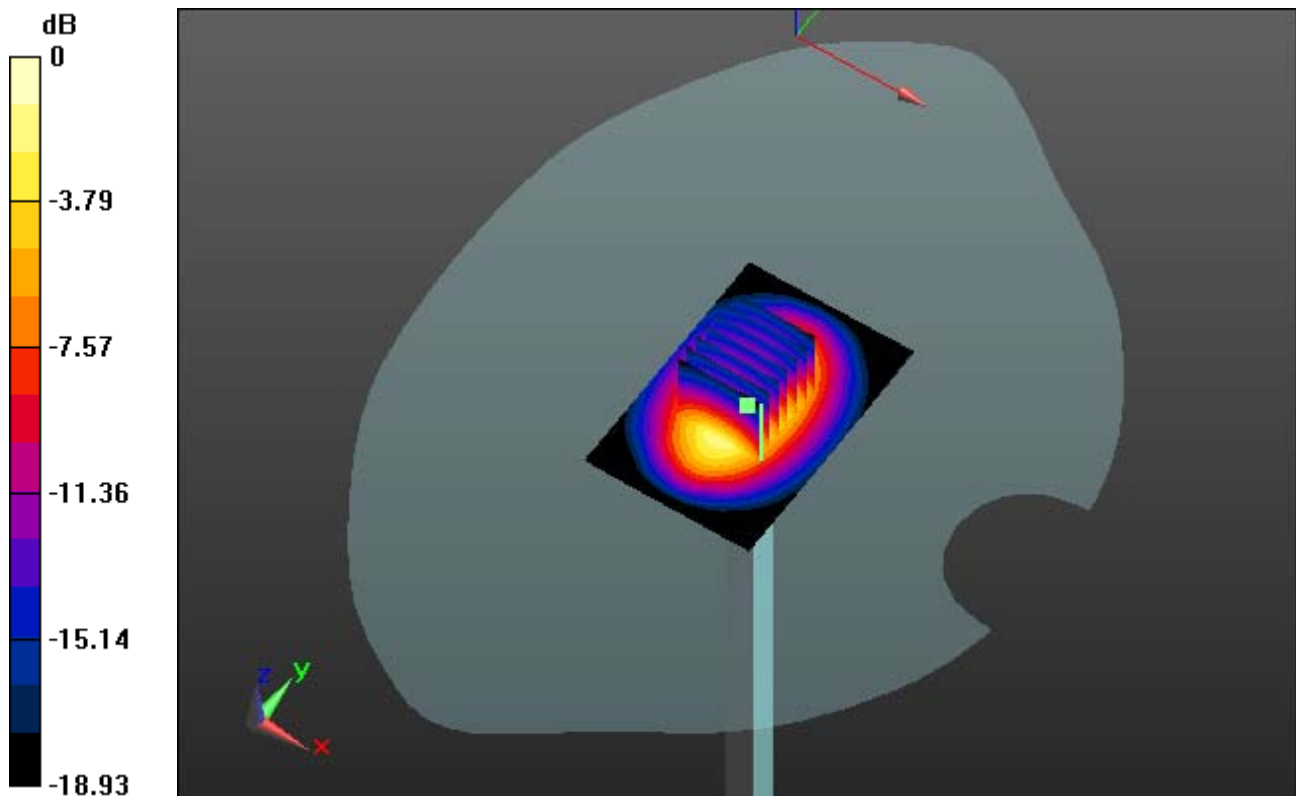
**Area Scan (61x91x1):** Measurement grid: dx=10mm, dy=10mm

**Zoom Scan (7x7x7)/Cube 0:** Measurement grid: dx=5mm, dy=5mm, dz=5mm

Power Drift = -0.01 dB

Peak SAR (extrapolated) = 19.643 mW/g

**SAR(1 g) = 10 W/kg; SAR(10 g) = 5.09 W/kg**



0 dB = 13.8 mW/g

# DIGITAL EMC CO., LTD

**DUT: Dipole 1900 MHz; Type: D1900V2; Serial: D1900V2 - SN:5d029**

Communication System: CW; Frequency: 1900 MHz; Duty Cycle: 1:1

Medium parameters used:  $f = 1900$  MHz;  $\sigma = 1.391$  mho/m;  $\epsilon_r = 40.089$ ;  $\rho = 1000$  kg/m<sup>3</sup>

Phantom section: Flat Section

## **DASY5 Configuration:**

Probe: EX3DV4 - SN3866; ConvF(7.76, 7.76, 7.76); Calibrated: 2012-06-20; ; Electronics: DAE4 Sn1335

Phantom: SAM with CRP\_20120521; Type: SAM; Serial: 1679

Measurement SW: DASY52, Version 52.8 (2); SEMCAD X Version 14.6.6 (6477)

Test Date: 2012-10-10; Ambient Temp: 22.4; Tissue Temp: 22.5

## **Dipole Validation**

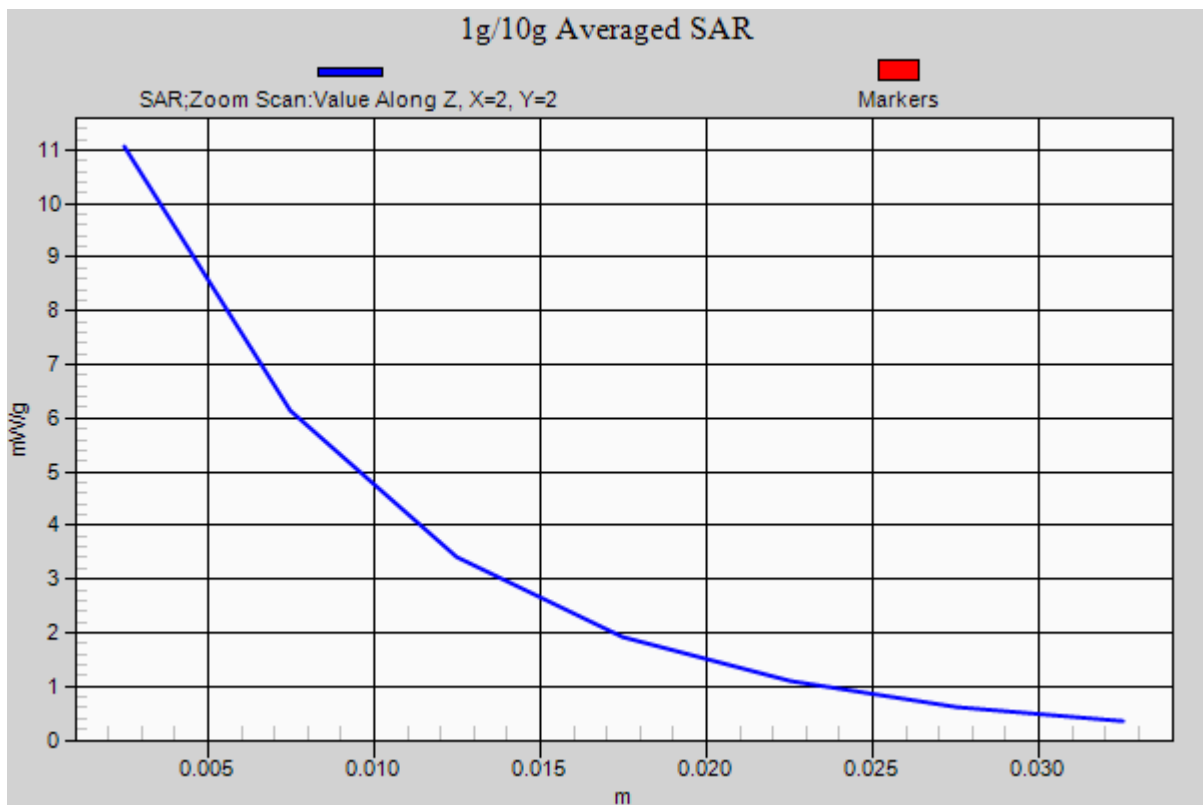
**Area Scan (61x91x1):** Measurement grid: dx=10mm, dy=10mm

**Zoom Scan (7x7x7)/Cube 0:** Measurement grid: dx=5mm, dy=5mm, dz=5mm

Power Drift = -0.01 dB

Peak SAR (extrapolated) = 19.643 mW/g

**SAR(1 g) = 10 W/kg; SAR(10 g) = 5.09 W/kg**



# DIGITAL EMC CO., LTD

**DUT: Dipole 1900 MHz; Type: D1900V2; Serial: D1900V2 - SN:5d029**

Communication System: CW; Frequency: 1900 MHz; Duty Cycle: 1:1

Medium parameters used:  $f = 1900$  MHz;  $\sigma = 1.531$  mho/m;  $\epsilon_r = 54.382$ ;  $\rho = 1000$  kg/m<sup>3</sup>

Phantom section: Flat Section

## **DASY5 Configuration:**

Probe: EX3DV4 - SN3866; ConvF(7.34, 7.34, 7.34); Calibrated: 2012-06-20; ; Electronics: DAE4 Sn1335

Phantom: SAM with CRP\_20120521; Type: SAM; Serial: 1679

Measurement SW: DASY52, Version 52.8 (2); SEMCAD X Version 14.6.6 (6477)

Test Date: 2012-10-10; Ambient Temp: 22.4; Tissue Temp: 22.5

## **Dipole Validation**

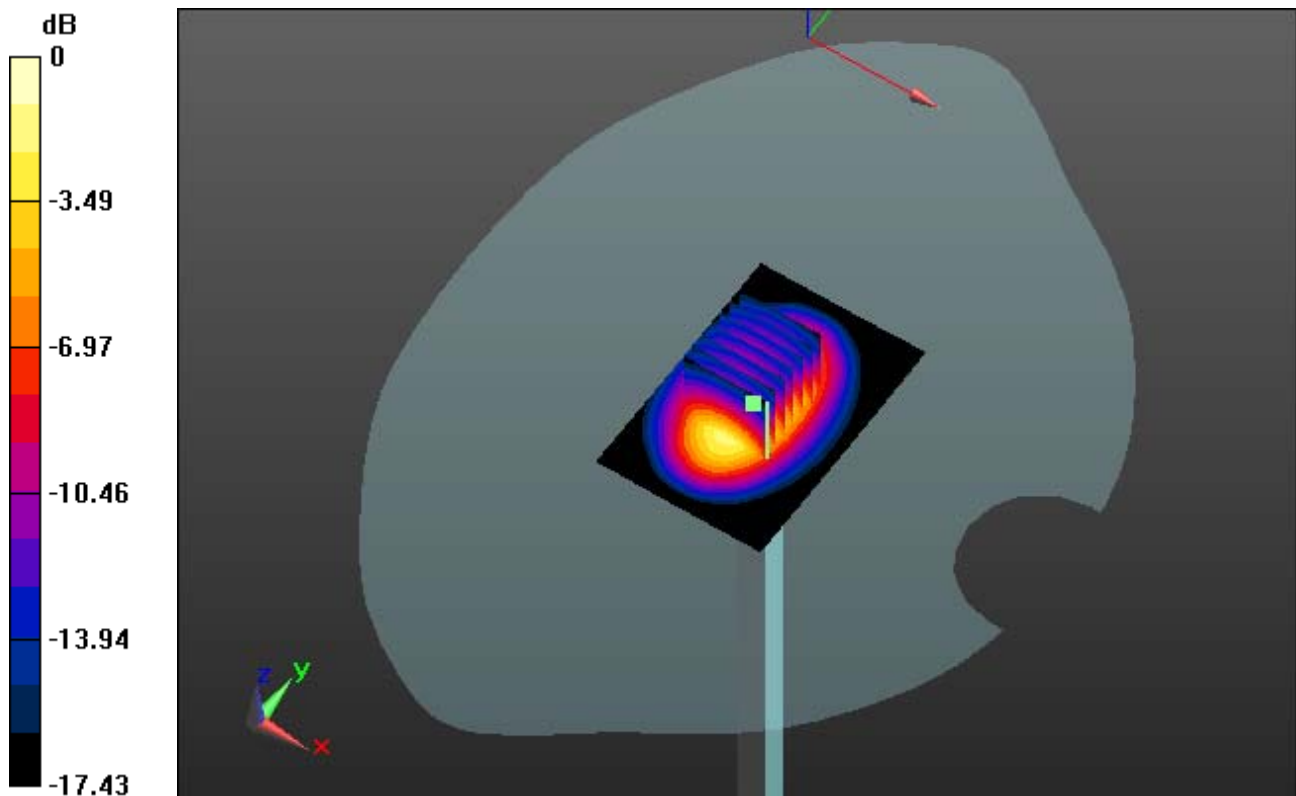
**Area Scan (61x91x1):** Measurement grid: dx=10mm, dy=10mm

**Zoom Scan (7x7x7)/Cube 0:** Measurement grid: dx=5mm, dy=5mm, dz=5mm

Power Drift = 0.05 dB

Peak SAR (extrapolated) = 18.214 mW/g

**SAR(1 g) = 9.76 W/kg; SAR(10 g) = 5.05 W/kg**



0 dB = 13.3 mW/g



# DIGITAL EMC CO., LTD

**DUT: Dipole 1900 MHz; Type: D1900V2; Serial: D1900V2 - SN:5d029**

Communication System: CW; Frequency: 1900 MHz; Duty Cycle: 1:1

Medium parameters used:  $f = 1900$  MHz;  $\sigma = 1.531$  mho/m;  $\epsilon_r = 54.382$ ;  $\rho = 1000$  kg/m<sup>3</sup>

Phantom section: Flat Section

## **DASY5 Configuration:**

Probe: EX3DV4 - SN3866; ConvF(7.34, 7.34, 7.34); Calibrated: 2012-06-20; ; Electronics: DAE4 Sn1335

Phantom: SAM with CRP\_20120521; Type: SAM; Serial: 1679

Measurement SW: DASY52, Version 52.8 (2); SEMCAD X Version 14.6.6 (6477)

Test Date: 2012-10-10; Ambient Temp: 22.4; Tissue Temp: 22.5

## **Dipole Validation**

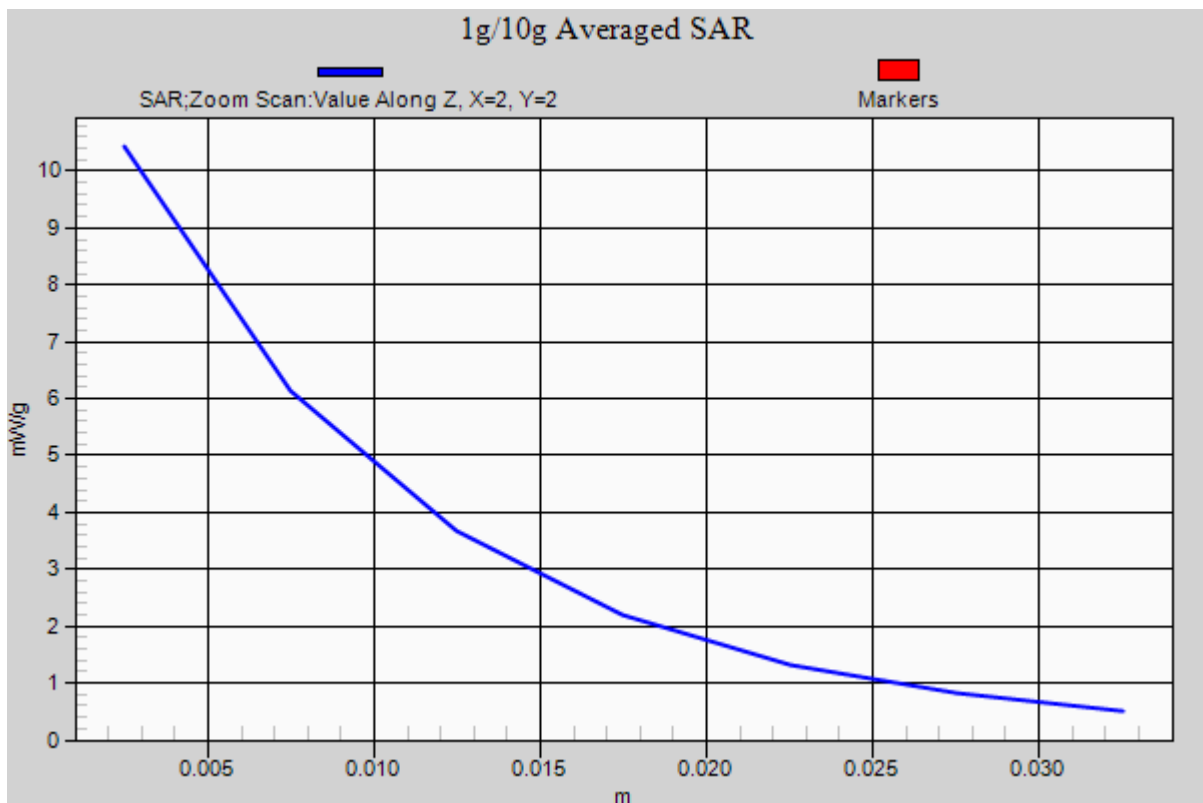
**Area Scan (61x91x1):** Measurement grid: dx=10mm, dy=10mm

**Zoom Scan (7x7x7)/Cube 0:** Measurement grid: dx=5mm, dy=5mm, dz=5mm

Power Drift = 0.05 dB

Peak SAR (extrapolated) = 18.214 mW/g

**SAR(1 g) = 9.76 W/kg; SAR(10 g) = 5.05 W/kg**



# DIGITAL EMC CO., LTD

**DUT: Dipole 2450 MHz; Type: D2450V2; Serial: D2450V2 - SN:726**

Communication System: CW; Frequency: 2450 MHz; Duty Cycle: 1:1

Medium parameters used:  $f = 2450$  MHz;  $\sigma = 1.858$  mho/m;  $\epsilon_r = 38.071$ ;  $\rho = 1000$  kg/m<sup>3</sup>

Phantom section: Flat Section

## **DASY5 Configuration:**

Probe: EX3DV4 - SN3866; ConvF(6.98, 6.98, 6.98); Calibrated: 2012-06-20; ; Electronics: DAE4 Sn1335

Phantom: SAM with CRP\_20120521; Type: SAM; Serial: 1679

Measurement SW: DASY52, Version 52.8 (2); SEMCAD X Version 14.6.6 (6477)

Test Date: 2012-10-11; Ambient Temp: 22.2; Tissue Temp: 22.4

## **Dipole Validation**

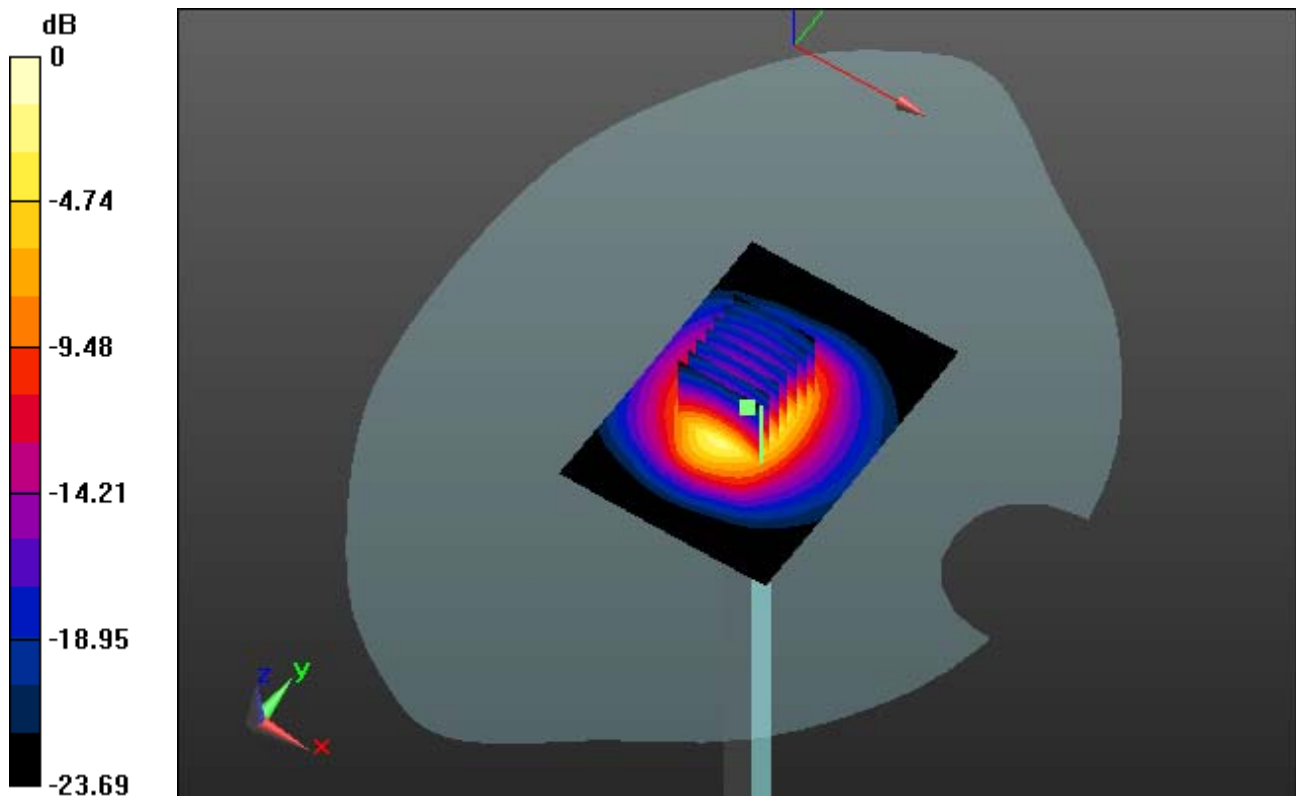
**Area Scan (51x71x1):** Measurement grid: dx=15mm, dy=15mm

**Zoom Scan (7x7x7)/Cube 0:** Measurement grid: dx=5mm, dy=5mm, dz=5mm

Power Drift = 0.03 dB

Peak SAR (extrapolated) = 30.701 mW/g

**SAR(1 g) = 13.8 W/kg; SAR(10 g) = 6.2 W/kg**



0 dB = 20.0 mW/g

# DIGITAL EMC CO., LTD

**DUT: Dipole 2450 MHz; Type: D2450V2; Serial: D2450V2 - SN:726**

Communication System: CW; Frequency: 2450 MHz; Duty Cycle: 1:1

Medium parameters used:  $f = 2450$  MHz;  $\sigma = 1.858$  mho/m;  $\epsilon_r = 38.071$ ;  $\rho = 1000$  kg/m<sup>3</sup>

Phantom section: Flat Section

## **DASY5 Configuration:**

Probe: EX3DV4 - SN3866; ConvF(6.98, 6.98, 6.98); Calibrated: 2012-06-20; ; Electronics: DAE4 Sn1335

Phantom: SAM with CRP\_20120521; Type: SAM; Serial: 1679

Measurement SW: DASY52, Version 52.8 (2); SEMCAD X Version 14.6.6 (6477)

Test Date: 2012-10-11; Ambient Temp: 22.2; Tissue Temp: 22.4

## **Dipole Validation**

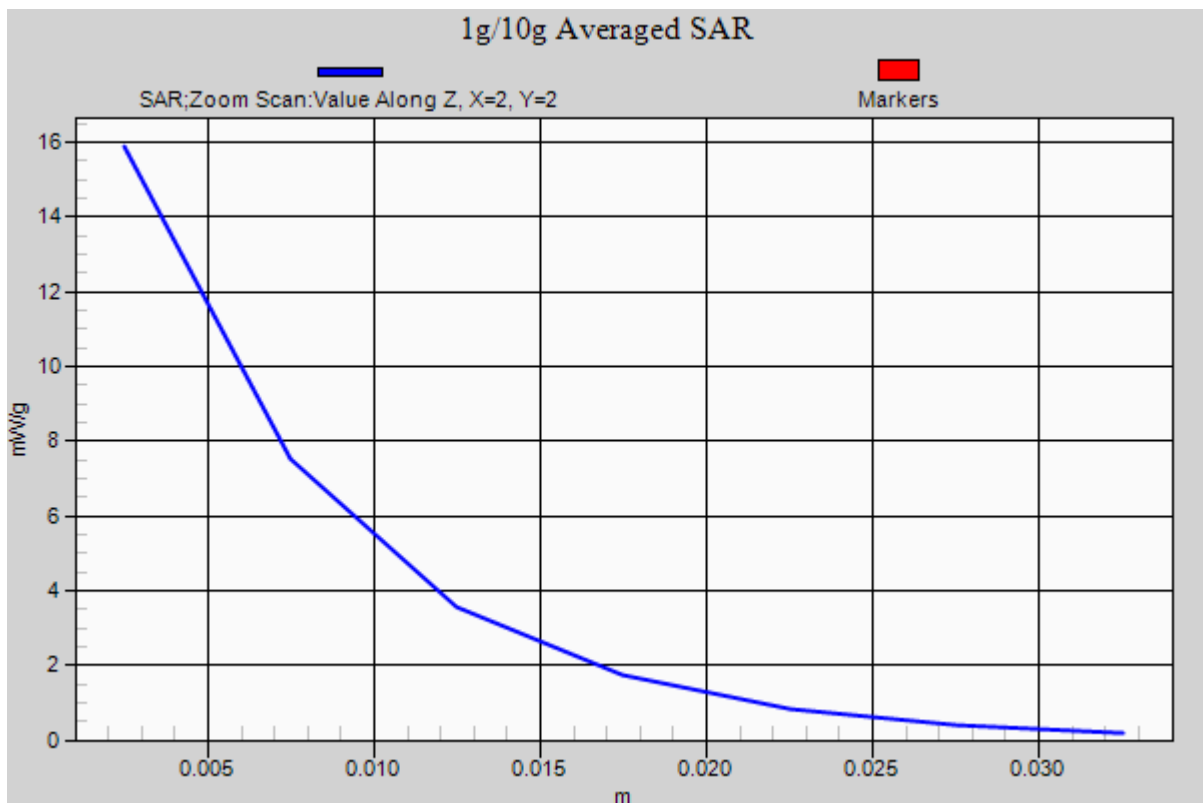
**Area Scan (51x71x1):** Measurement grid: dx=15mm, dy=15mm

**Zoom Scan (7x7x7)/Cube 0:** Measurement grid: dx=5mm, dy=5mm, dz=5mm

Power Drift = 0.03 dB

Peak SAR (extrapolated) = 30.701 mW/g

**SAR(1 g) = 13.8 W/kg; SAR(10 g) = 6.2 W/kg**



# DIGITAL EMC CO., LTD

**DUT: Dipole 2450 MHz; Type: D2450V2; Serial: D2450V2 - SN:726**

Communication System: CW; Frequency: 2450 MHz; Duty Cycle: 1:1

Medium parameters used:  $f = 2450$  MHz;  $\sigma = 2.007$  mho/m;  $\epsilon_r = 52.574$ ;  $\rho = 1000$  kg/m<sup>3</sup>

Phantom section: Flat Section

## **DASY5 Configuration:**

Probe: EX3DV4 - SN3866; ConvF(6.97, 6.97, 6.97); Calibrated: 2012-06-20; ; Electronics: DAE4 Sn1335

Phantom: SAM with CRP\_20120521; Type: SAM; Serial: 1679

Measurement SW: DASY52, Version 52.8 (2); SEMCAD X Version 14.6.6 (6477)

Test Date: 2012-10-11; Ambient Temp: 22.2; Tissue Temp: 22.4

## **Dipole Validation**

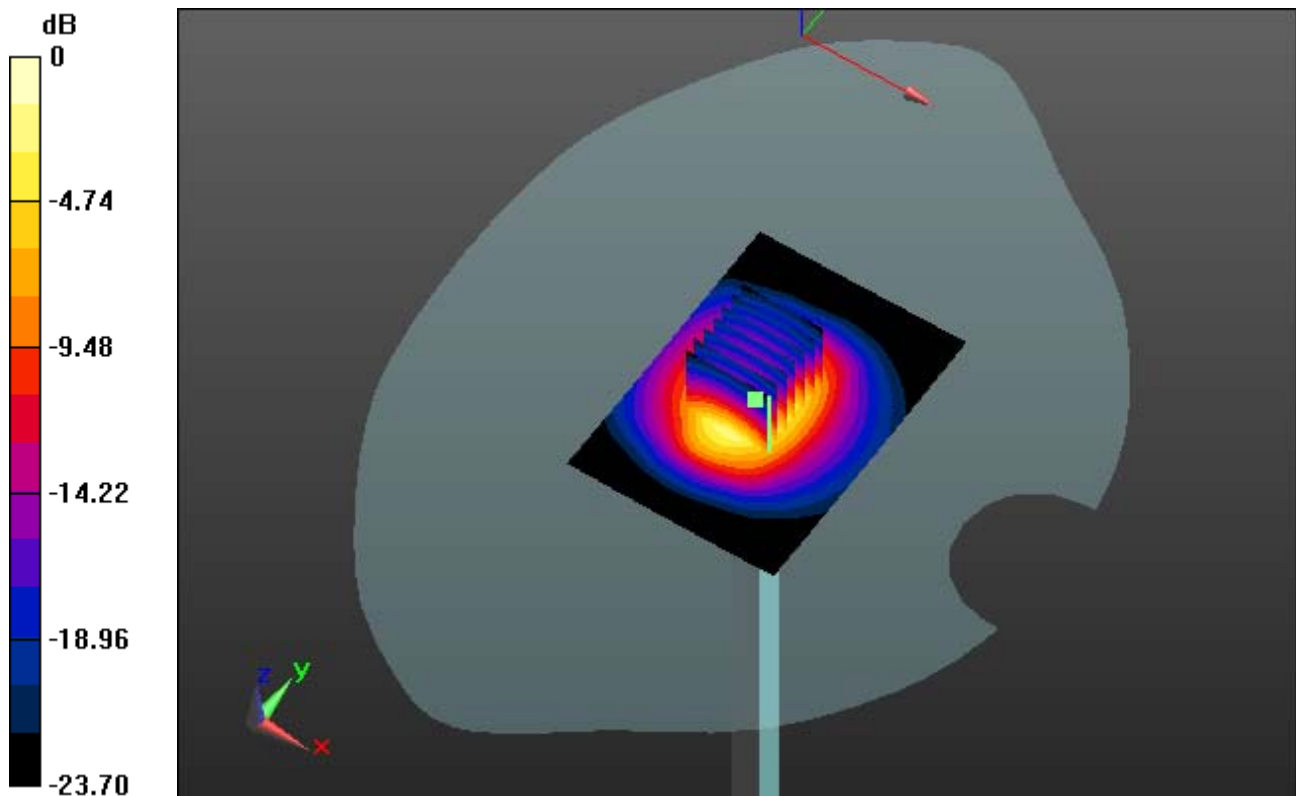
**Area Scan (51x71x1):** Measurement grid: dx=15mm, dy=15mm

**Zoom Scan (7x7x7)/Cube 0:** Measurement grid: dx=5mm, dy=5mm, dz=5mm

Power Drift = 0.02 dB

Peak SAR (extrapolated) = 29.684 mW/g

**SAR(1 g) = 13.2 W/kg; SAR(10 g) = 5.94 W/kg**



0 dB = 19.0 mW/g

# DIGITAL EMC CO., LTD

**DUT: Dipole 2450 MHz; Type: D2450V2; Serial: D2450V2 - SN:726**

Communication System: CW; Frequency: 2450 MHz; Duty Cycle: 1:1

Medium parameters used:  $f = 2450$  MHz;  $\sigma = 2.007$  mho/m;  $\epsilon_r = 52.574$ ;  $\rho = 1000$  kg/m<sup>3</sup>

Phantom section: Flat Section

## **DASY5 Configuration:**

Probe: EX3DV4 - SN3866; ConvF(6.97, 6.97, 6.97); Calibrated: 2012-06-20; ; Electronics: DAE4 Sn1335

Phantom: SAM with CRP\_20120521; Type: SAM; Serial: 1679

Measurement SW: DASY52, Version 52.8 (2); SEMCAD X Version 14.6.6 (6477)

Test Date: 2012-10-11; Ambient Temp: 22.2; Tissue Temp: 22.4

## **Dipole Validation**

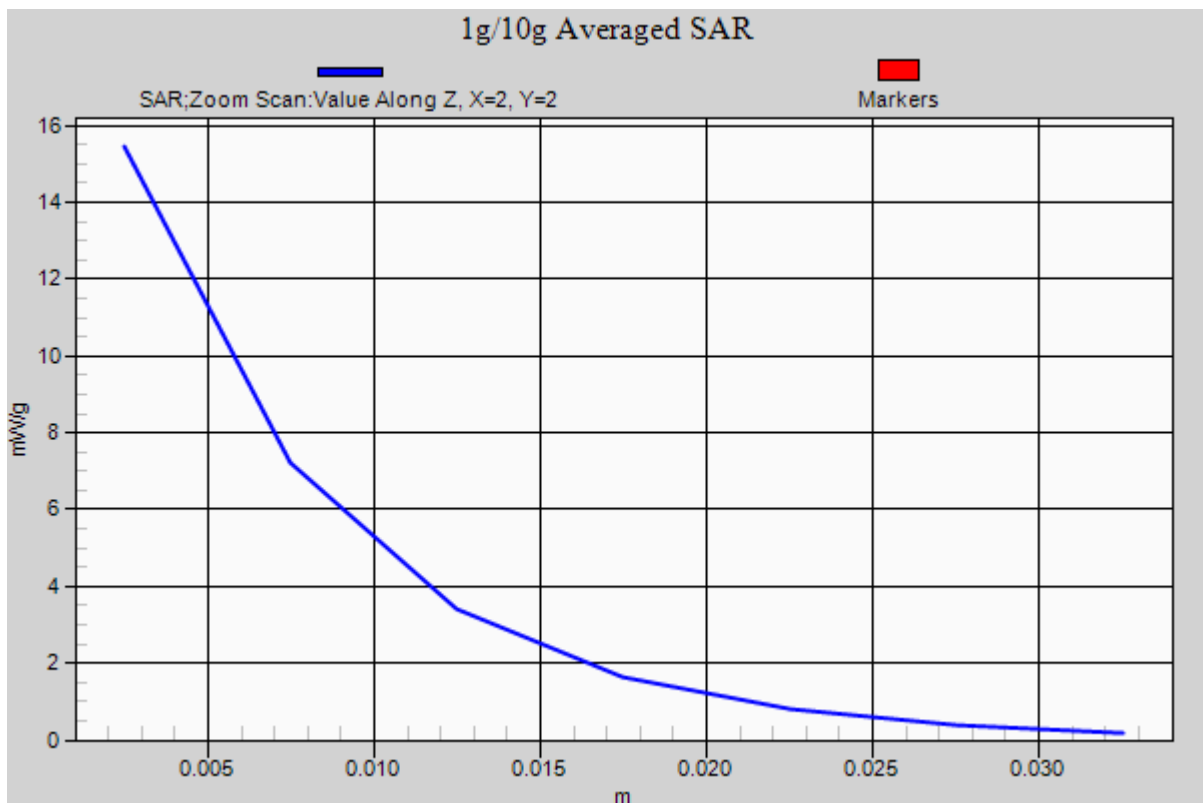
**Area Scan (51x71x1):** Measurement grid: dx=15mm, dy=15mm

**Zoom Scan (7x7x7)/Cube 0:** Measurement grid: dx=5mm, dy=5mm, dz=5mm

Power Drift = 0.02 dB

Peak SAR (extrapolated) = 29.684 mW/g

**SAR(1 g) = 13.2 W/kg; SAR(10 g) = 5.94 W/kg**



# DIGITAL EMC CO., LTD

**DUT: Dipole 5000 MHz; Type: D5GHzV2; Serial: D5GHzV2 - SN:1103**

Communication System: CW; Frequency: 5200 MHz; Duty Cycle: 1:1

Medium parameters used:  $f = 5200$  MHz;  $\sigma = 4.741$  mho/m;  $\epsilon_r = 35.456$ ;  $\rho = 1000$  kg/m<sup>3</sup>

Phantom section: Flat Section

## **DASY5 Configuration:**

Probe: EX3DV4 - SN3643; ConvF(4.94, 4.94, 4.94); Calibrated: 2012-01-27; ; Electronics: DAE4 Sn1335

Phantom: SAM with CRP\_20120521; Type: SAM; Serial: 1679

Measurement SW: DASY52, Version 52.8 (2); SEMCAD X Version 14.6.6 (6477)

Test Date: 2012-10-12; Ambient Temp: 22.5; Tissue Temp: 22.7

## **Dipole Validation**

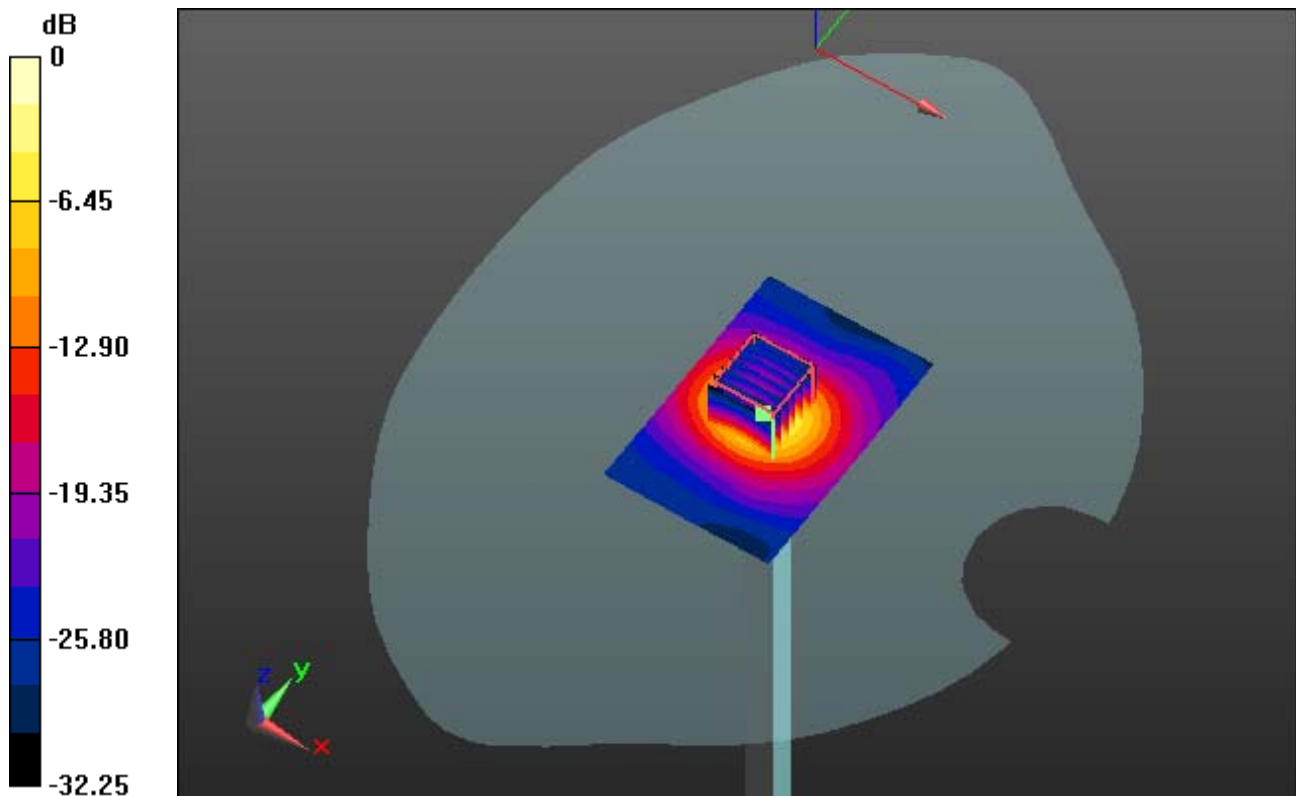
**Area Scan (61x91x1):** Measurement grid: dx=10mm, dy=10mm

**Zoom Scan (7x7x11)/Cube 0:** Measurement grid: dx=4mm, dy=4mm, dz=2mm

Power Drift = 0.06 dB

Peak SAR (extrapolated) = 34.129 mW/g

**SAR(1 g) = 7.88 W/kg; SAR(10 g) = 2.26 W/kg**



0 dB = 16.2 mW/g

# DIGITAL EMC CO., LTD

**DUT: Dipole 5000 MHz; Type: D5GHzV2; Serial: D5GHzV2 - SN:1103**

Communication System: CW; Frequency: 5200 MHz; Duty Cycle: 1:1

Medium parameters used:  $f = 5200$  MHz;  $\sigma = 4.741$  mho/m;  $\epsilon_r = 35.456$ ;  $\rho = 1000$  kg/m<sup>3</sup>

Phantom section: Flat Section

## **DASY5 Configuration:**

Probe: EX3DV4 - SN3643; ConvF(4.94, 4.94, 4.94); Calibrated: 2012-01-27; ; Electronics: DAE4 Sn1335

Phantom: SAM with CRP\_20120521; Type: SAM; Serial: 1679

Measurement SW: DASY52, Version 52.8 (2); SEMCAD X Version 14.6.6 (6477)

Test Date: 2012-10-12; Ambient Temp: 22.5; Tissue Temp: 22.7

## **Dipole Validation**

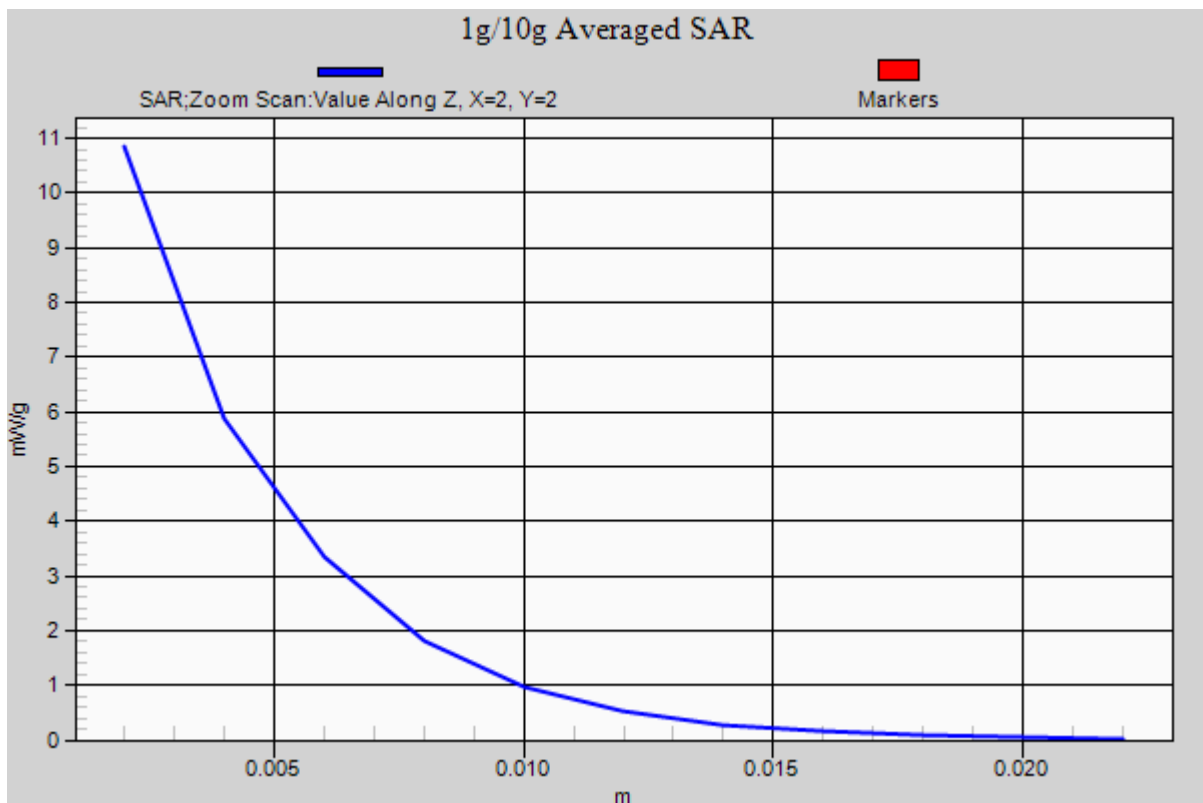
**Area Scan (61x91x1):** Measurement grid: dx=10mm, dy=10mm

**Zoom Scan (7x7x11)/Cube 0:** Measurement grid: dx=4mm, dy=4mm, dz=2mm

Power Drift = 0.06 dB

Peak SAR (extrapolated) = 34.129 mW/g

**SAR(1 g) = 7.88 W/kg; SAR(10 g) = 2.26 W/kg**



# DIGITAL EMC CO., LTD

**DUT: Dipole 5000 MHz; Type: D5GHzV2; Serial: D5GHzV2 - SN:1103**

Communication System: CW; Frequency: 5200 MHz; Duty Cycle: 1:1

Medium parameters used:  $f = 5200$  MHz;  $\sigma = 5.158$  mho/m;  $\epsilon_r = 47.699$ ;  $\rho = 1000$  kg/m<sup>3</sup>

Phantom section: Flat Section

## **DASY5 Configuration:**

Probe: EX3DV4 - SN3643; ConvF(4.23, 4.23, 4.23); Calibrated: 2012-01-27; ; Electronics: DAE4 Sn1335

Phantom: SAM 1800/1900 MHz; Type: SAM; Serial: TP-1224

Measurement SW: DASY4, Version 4.7 (80); SEMCAD X Version 14.6.6 (6477)

Test Date: 2012-10-15; Ambient Temp: 22.0; Tissue Temp: 22.2

## **Dipole Validation**

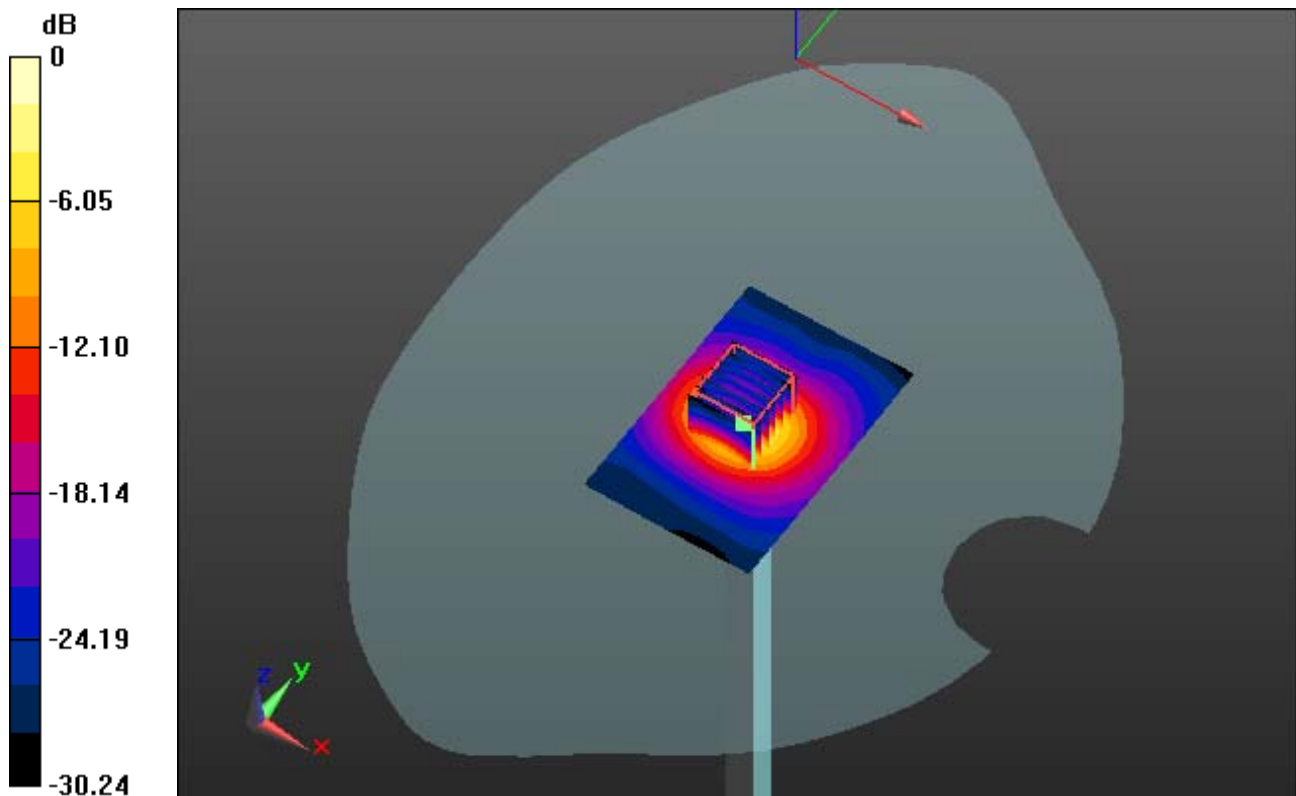
**Area Scan (61x91x1):** Measurement grid: dx=10mm, dy=10mm

**Zoom Scan (7x7x11)/Cube 0:** Measurement grid: dx=4mm, dy=4mm, dz=2mm

Power Drift = 0.05 dB

Peak SAR (extrapolated) = 30.659 mW/g

**SAR(1 g) = 7.52 W/kg; SAR(10 g) = 2.17 W/kg**



0 dB = 15.4 mW/g



# DIGITAL EMC CO., LTD

**DUT: Dipole 5000 MHz; Type: D5GHzV2; Serial: D5GHzV2 - SN:1103**

Communication System: CW; Frequency: 5200 MHz; Duty Cycle: 1:1

Medium parameters used:  $f = 5200$  MHz;  $\sigma = 5.158$  mho/m;  $\epsilon_r = 47.699$ ;  $\rho = 1000$  kg/m<sup>3</sup>

Phantom section: Flat Section

## **DASY5 Configuration:**

Probe: EX3DV4 - SN3643; ConvF(4.23, 4.23, 4.23); Calibrated: 2012-01-27; ; Electronics: DAE4 Sn1335

Phantom: SAM 1800/1900 MHz; Type: SAM; Serial: TP-1224

Measurement SW: DASY4, Version 4.7 (80); SEMCAD X Version 14.6.6 (6477)

Test Date: 2012-10-15; Ambient Temp: 22.0; Tissue Temp: 22.2

## **Dipole Validation**

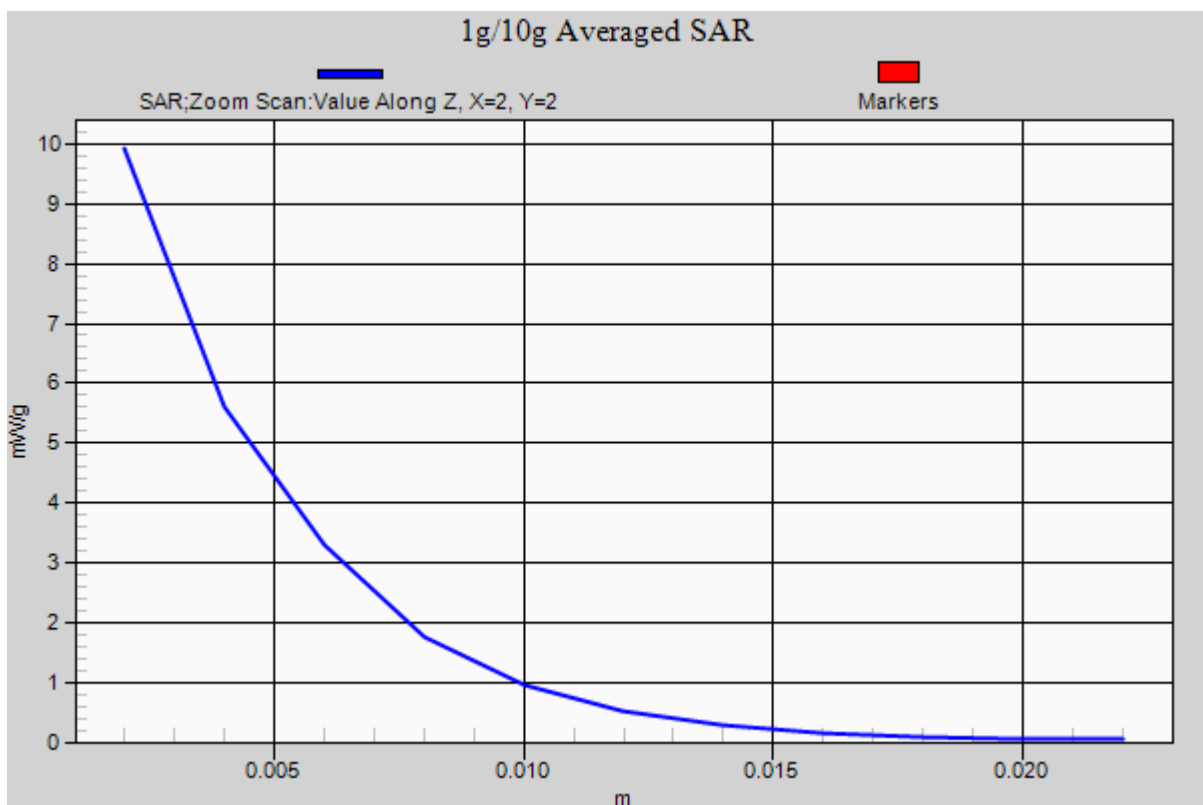
**Area Scan (61x91x1):** Measurement grid: dx=10mm, dy=10mm

**Zoom Scan (7x7x11)/Cube 0:** Measurement grid: dx=4mm, dy=4mm, dz=2mm

Power Drift = 0.05 dB

Peak SAR (extrapolated) = 30.659 mW/g

**SAR(1 g) = 7.52 W/kg; SAR(10 g) = 2.17 W/kg**



# DIGITAL EMC CO., LTD

**DUT: Dipole 5000 MHz; Type: D5GHzV2; Serial: D5GHzV2 - SN:1103**

Communication System: CW; Frequency: 5500 MHz; Duty Cycle: 1:1

Medium parameters used:  $f = 5500$  MHz;  $\sigma = 5.098$  mho/m;  $\epsilon_r = 34.916$ ;  $\rho = 1000$  kg/m<sup>3</sup>

Phantom section: Flat Section

## **DASY5 Configuration:**

Probe: EX3DV4 - SN3866; ConvF(4.45, 4.45, 4.45); Calibrated: 2012-06-20; ; Electronics: DAE4 Sn1335

Phantom: SAM with CRP\_20120521; Type: SAM; Serial: 1679

Measurement SW: DASY52, Version 52.8 (2); SEMCAD X Version 14.6.6 (6477)

Test Date: 2012-10-12; Ambient Temp: 22.5; Tissue Temp: 22.7

## **Dipole Validation**

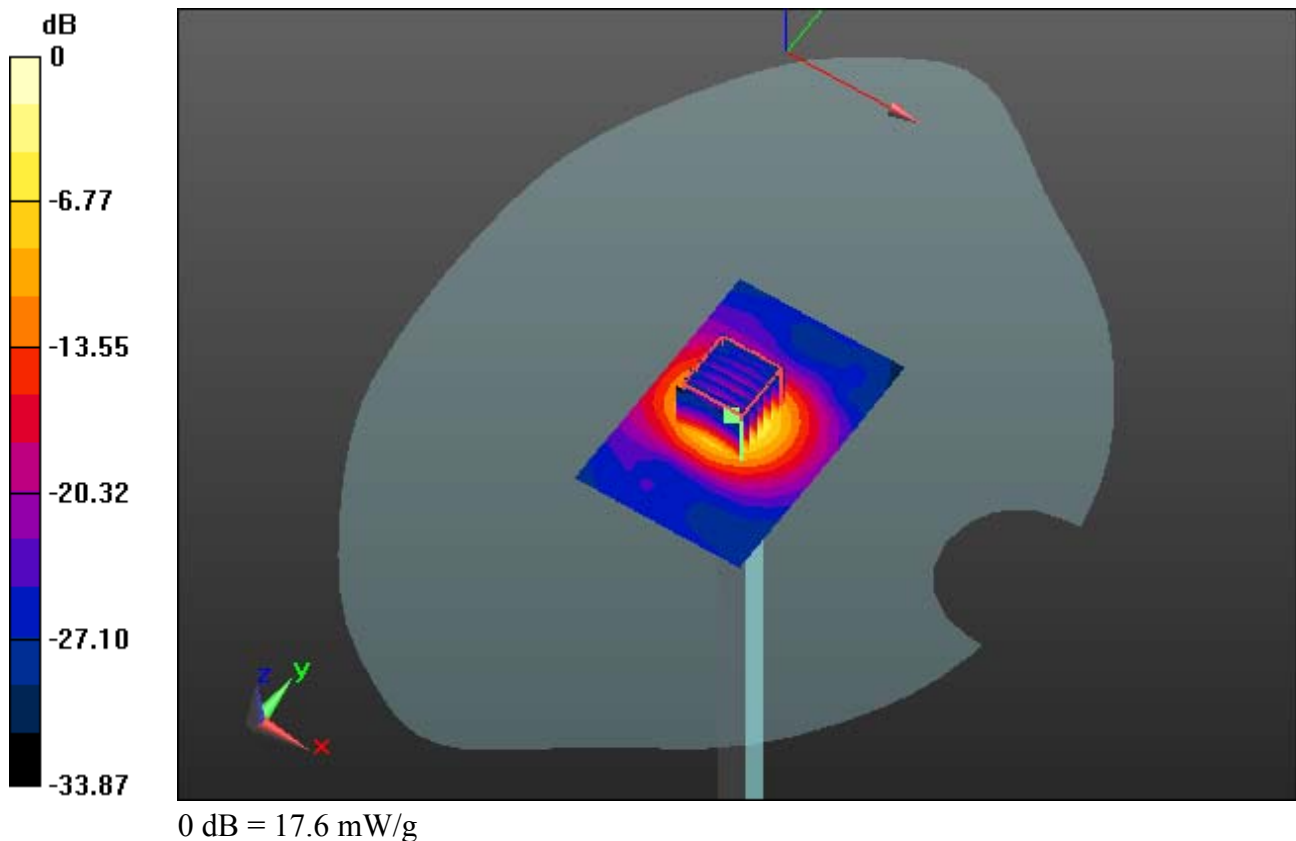
**Area Scan (61x91x1):** Measurement grid: dx=10mm, dy=10mm

**Zoom Scan (7x7x11)/Cube 0:** Measurement grid: dx=4mm, dy=4mm, dz=2mm

Power Drift = 0.17 dB

Peak SAR (extrapolated) = 38.167 mW/g

**SAR(1 g) = 8.48 W/kg; SAR(10 g) = 2.42 W/kg**



# DIGITAL EMC CO., LTD

**DUT: Dipole 5000 MHz; Type: D5GHzV2; Serial: D5GHzV2 - SN:1103**

Communication System: CW; Frequency: 5500 MHz; Duty Cycle: 1:1

Medium parameters used:  $f = 5500$  MHz;  $\sigma = 5.098$  mho/m;  $\epsilon_r = 34.916$ ;  $\rho = 1000$  kg/m<sup>3</sup>

Phantom section: Flat Section

## **DASY5 Configuration:**

Probe: EX3DV4 - SN3866; ConvF(4.45, 4.45, 4.45); Calibrated: 2012-06-20; ; Electronics: DAE4 Sn1335

Phantom: SAM with CRP\_20120521; Type: SAM; Serial: 1679

Measurement SW: DASY52, Version 52.8 (2); SEMCAD X Version 14.6.6 (6477)

Test Date: 2012-10-12; Ambient Temp: 22.5; Tissue Temp: 22.7

## **Dipole Validation**

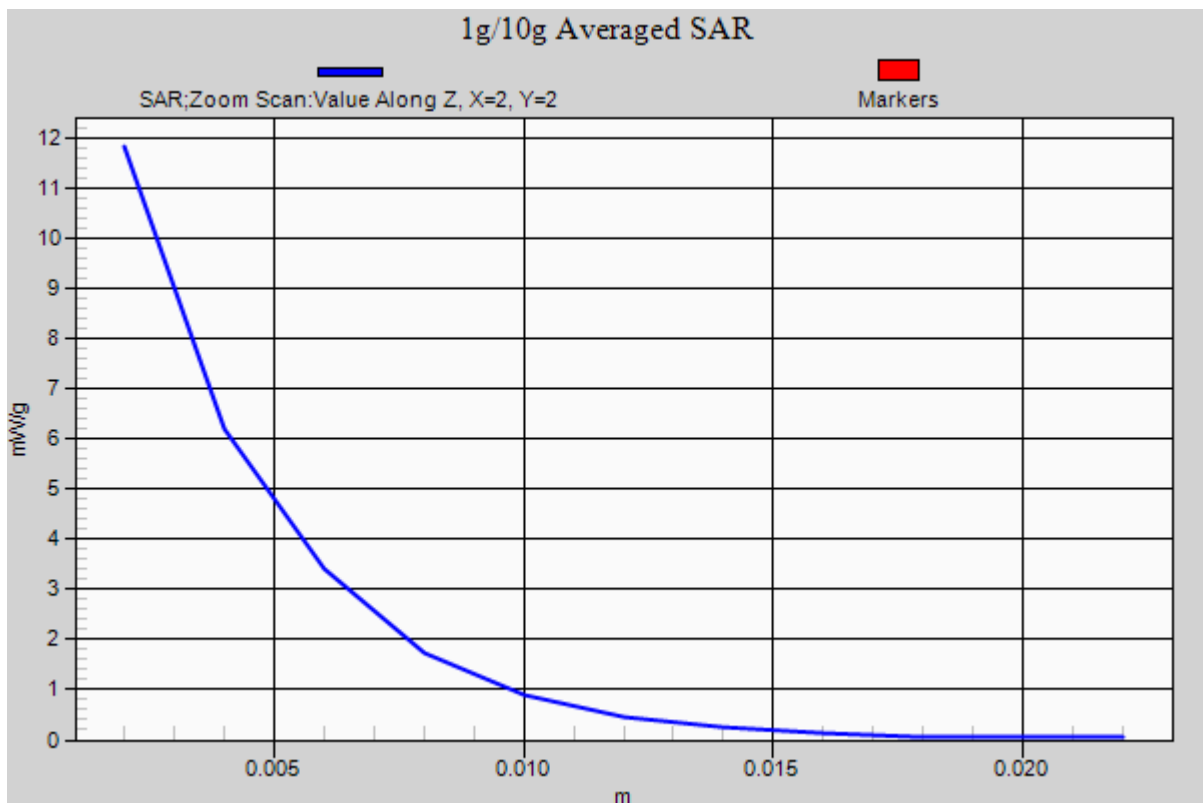
**Area Scan (61x91x1):** Measurement grid: dx=10mm, dy=10mm

**Zoom Scan (7x7x11)/Cube 0:** Measurement grid: dx=4mm, dy=4mm, dz=2mm

Power Drift = 0.17 dB

Peak SAR (extrapolated) = 38.167 mW/g

**SAR(1 g) = 8.48 W/kg; SAR(10 g) = 2.42 W/kg**



# DIGITAL EMC CO., LTD

**DUT: Dipole 5000 MHz; Type: D5GHzV2; Serial: D5GHzV2 - SN:1103**

Communication System: CW; Frequency: 5500 MHz; Duty Cycle: 1:1

Medium parameters used:  $f = 5500$  MHz;  $\sigma = 5.558$  mho/m;  $\epsilon_r = 47.14$ ;  $\rho = 1000$  kg/m<sup>3</sup>

Phantom section: Flat Section

## **DASY5 Configuration:**

Probe: EX3DV4 - SN3866; ConvF(3.86, 3.86, 3.86); Calibrated: 2012-06-20; ; Electronics: DAE4 Sn1335

Phantom: SAM with CRP\_20120521; Type: SAM; Serial: 1679

Measurement SW: DASY52, Version 52.8 (2); SEMCAD X Version 14.6.6 (6477)

Test Date: 2012-10-15; Ambient Temp: 22.0; Tissue Temp: 22.2

## **Dipole Validation**

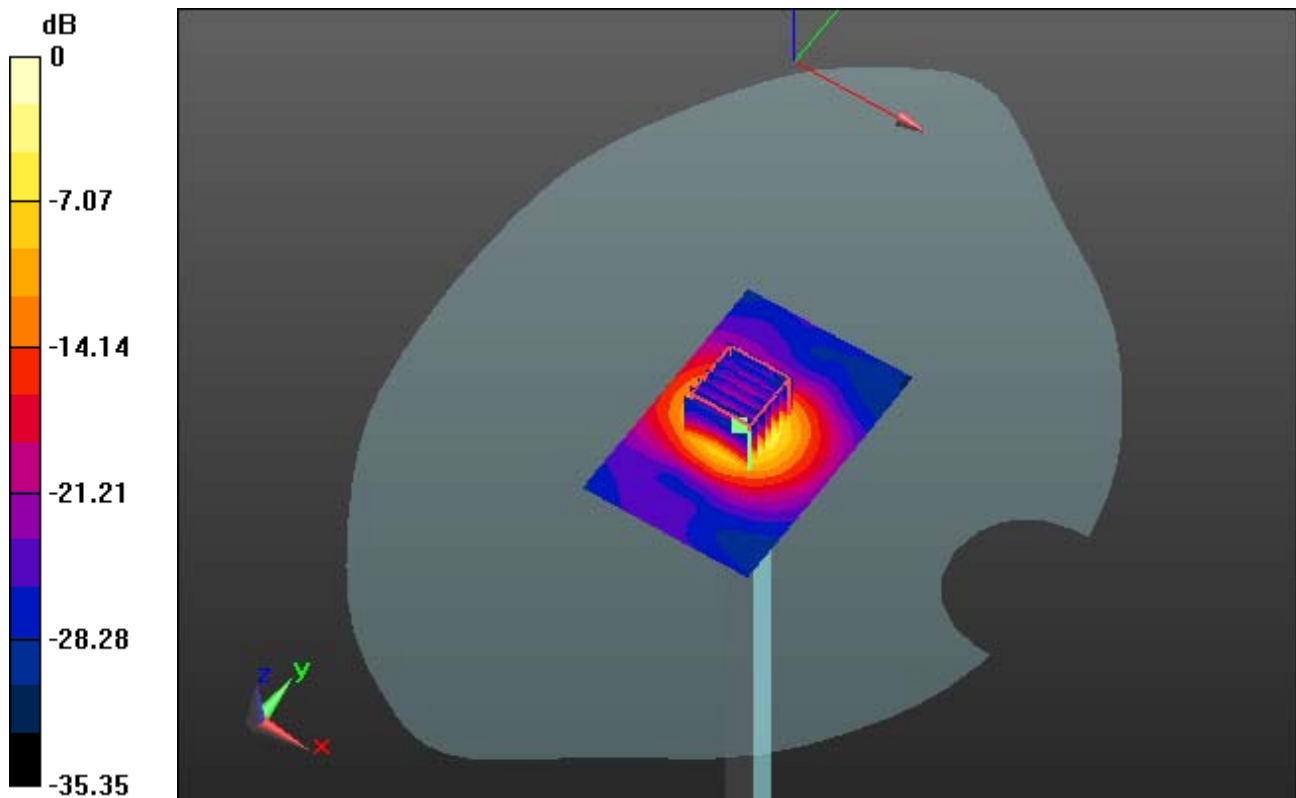
**Area Scan (61x91x1):** Measurement grid: dx=10mm, dy=10mm

**Zoom Scan (7x7x11)/Cube 0:** Measurement grid: dx=4mm, dy=4mm, dz=2mm

Power Drift = 0.11 dB

Peak SAR (extrapolated) = 33.956 mW/g

**SAR(1 g) = 7.73 W/kg; SAR(10 g) = 2.21 W/kg**



0 dB = 16.1 mW/g

# DIGITAL EMC CO., LTD

**DUT: Dipole 5000 MHz; Type: D5GHzV2; Serial: D5GHzV2 - SN:1103**

Communication System: CW; Frequency: 5500 MHz; Duty Cycle: 1:1

Medium parameters used:  $f = 5500$  MHz;  $\sigma = 5.558$  mho/m;  $\epsilon_r = 47.14$ ;  $\rho = 1000$  kg/m<sup>3</sup>

Phantom section: Flat Section

## **DASY5 Configuration:**

Probe: EX3DV4 - SN3866; ConvF(3.86, 3.86, 3.86); Calibrated: 2012-06-20; ; Electronics: DAE4 Sn1335

Phantom: SAM with CRP\_20120521; Type: SAM; Serial: 1679

Measurement SW: DASY52, Version 52.8 (2); SEMCAD X Version 14.6.6 (6477)

Test Date: 2012-10-15; Ambient Temp: 22.0; Tissue Temp: 22.2

## **Dipole Validation**

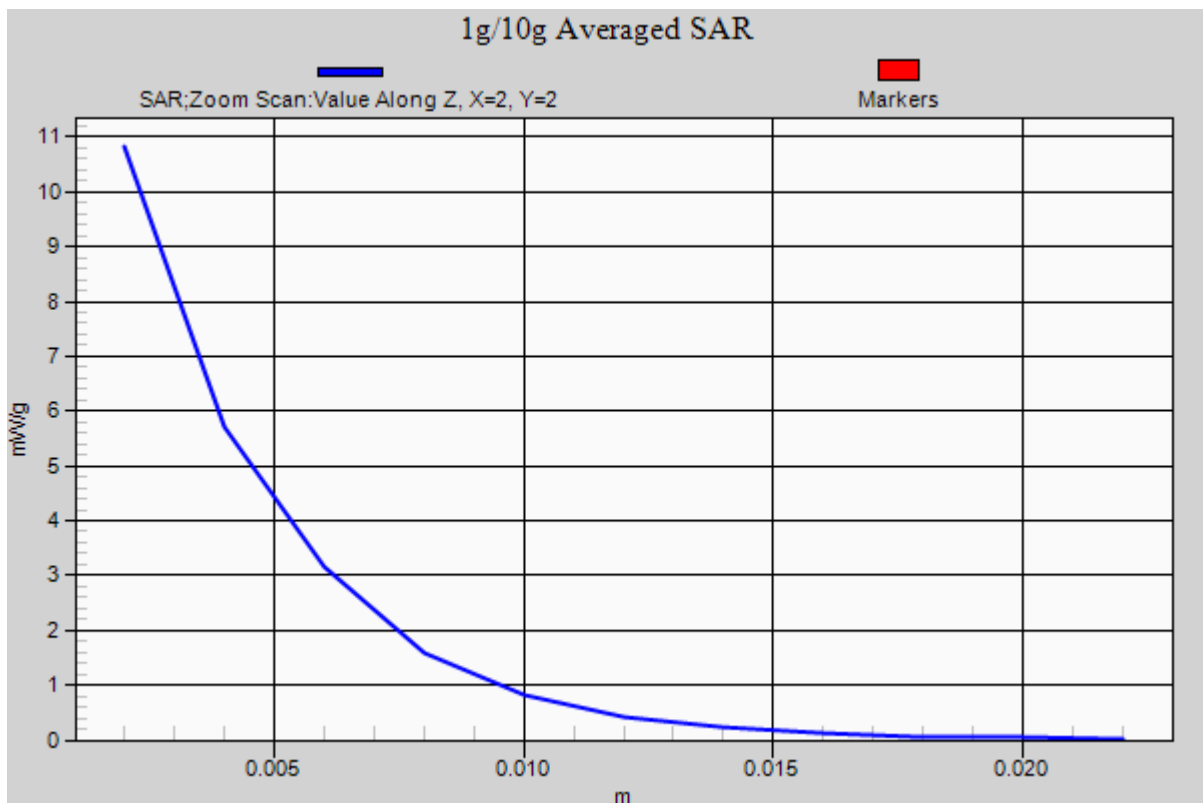
**Area Scan (61x91x1):** Measurement grid: dx=10mm, dy=10mm

**Zoom Scan (7x7x11)/Cube 0:** Measurement grid: dx=4mm, dy=4mm, dz=2mm

Power Drift = 0.11 dB

Peak SAR (extrapolated) = 33.956 mW/g

**SAR(1 g) = 7.73 W/kg; SAR(10 g) = 2.21 W/kg**



# DIGITAL EMC CO., LTD

**DUT: Dipole 5000 MHz; Type: D5GHzV2; Serial: D5GHzV2 - SN:1103**

Communication System: CW; Frequency: 5800 MHz; Duty Cycle: 1:1

Medium parameters used:  $f = 5800$  MHz;  $\sigma = 5.467$  mho/m;  $\epsilon_r = 34.352$ ;  $\rho = 1000$  kg/m<sup>3</sup>

Phantom section: Flat Section

## **DASY5 Configuration:**

Probe: EX3DV4 - SN3643; ConvF(4.16, 4.16, 4.16); Calibrated: 2012-01-27; ; Electronics: DAE4 Sn1335

Phantom: SAM with CRP\_20120521; Type: SAM; Serial: 1679

Measurement SW: DASY52, Version 52.8 (2); SEMCAD X Version 14.6.6 (6477)

Test Date: 2012-10-12; Ambient Temp: 22.5; Tissue Temp: 22.7

## **Dipole Validation**

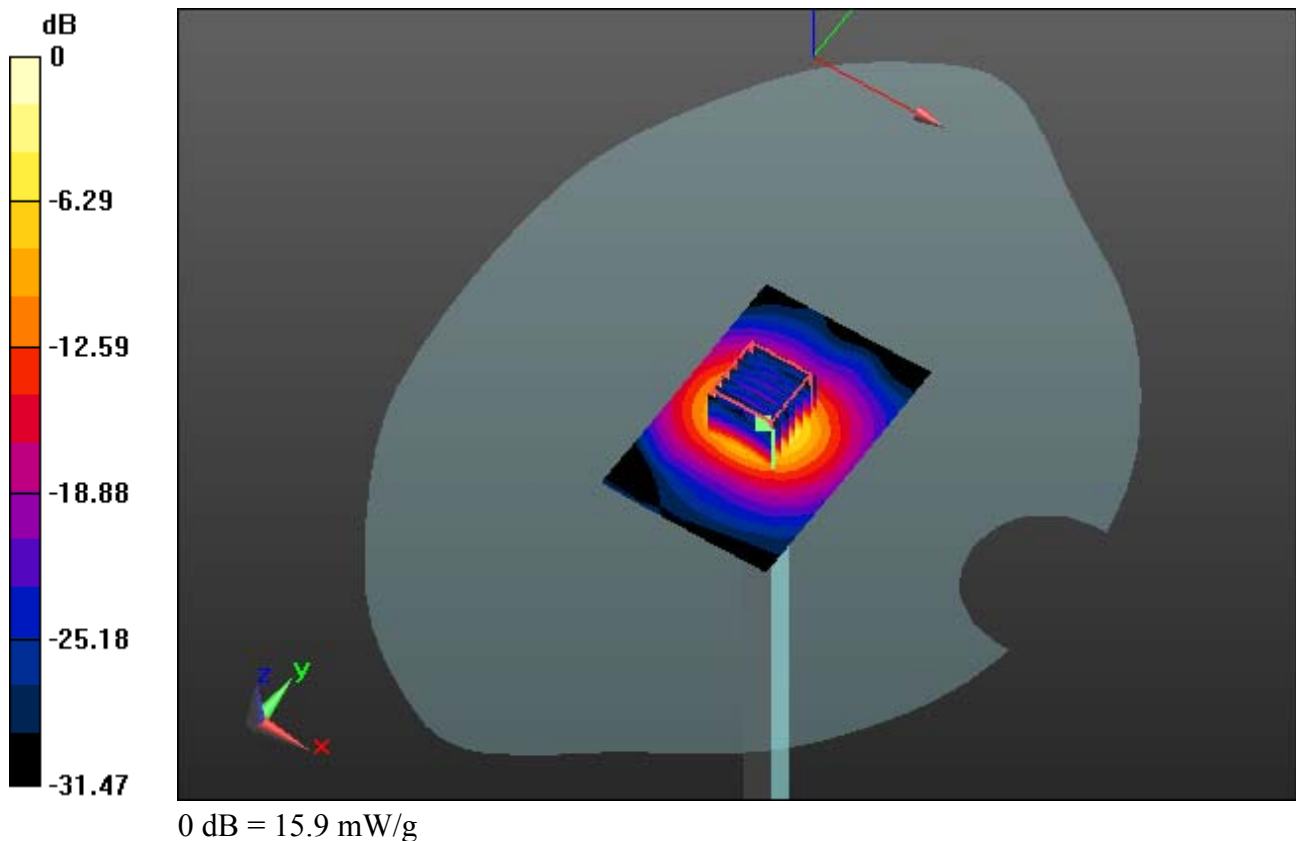
**Area Scan (61x91x1):** Measurement grid: dx=10mm, dy=10mm

**Zoom Scan (7x7x11)/Cube 0:** Measurement grid: dx=4mm, dy=4mm, dz=2mm

Power Drift = 0.00 dB

Peak SAR (extrapolated) = 35.430 mW/g

**SAR(1 g) = 7.78 W/kg; SAR(10 g) = 2.23 W/kg**



# DIGITAL EMC CO., LTD

**DUT: Dipole 5000 MHz; Type: D5GHzV2; Serial: D5GHzV2 - SN:1103**

Communication System: CW; Frequency: 5800 MHz; Duty Cycle: 1:1

Medium parameters used:  $f = 5800$  MHz;  $\sigma = 5.467$  mho/m;  $\epsilon_r = 34.352$ ;  $\rho = 1000$  kg/m<sup>3</sup>

Phantom section: Flat Section

## **DASY5 Configuration:**

Probe: EX3DV4 - SN3643; ConvF(4.16, 4.16, 4.16); Calibrated: 2012-01-27; ; Electronics: DAE4 Sn1335

Phantom: SAM with CRP\_20120521; Type: SAM; Serial: 1679

Measurement SW: DASY52, Version 52.8 (2); SEMCAD X Version 14.6.6 (6477)

Test Date: 2012-10-12; Ambient Temp: 22.5; Tissue Temp: 22.7

## **Dipole Validation**

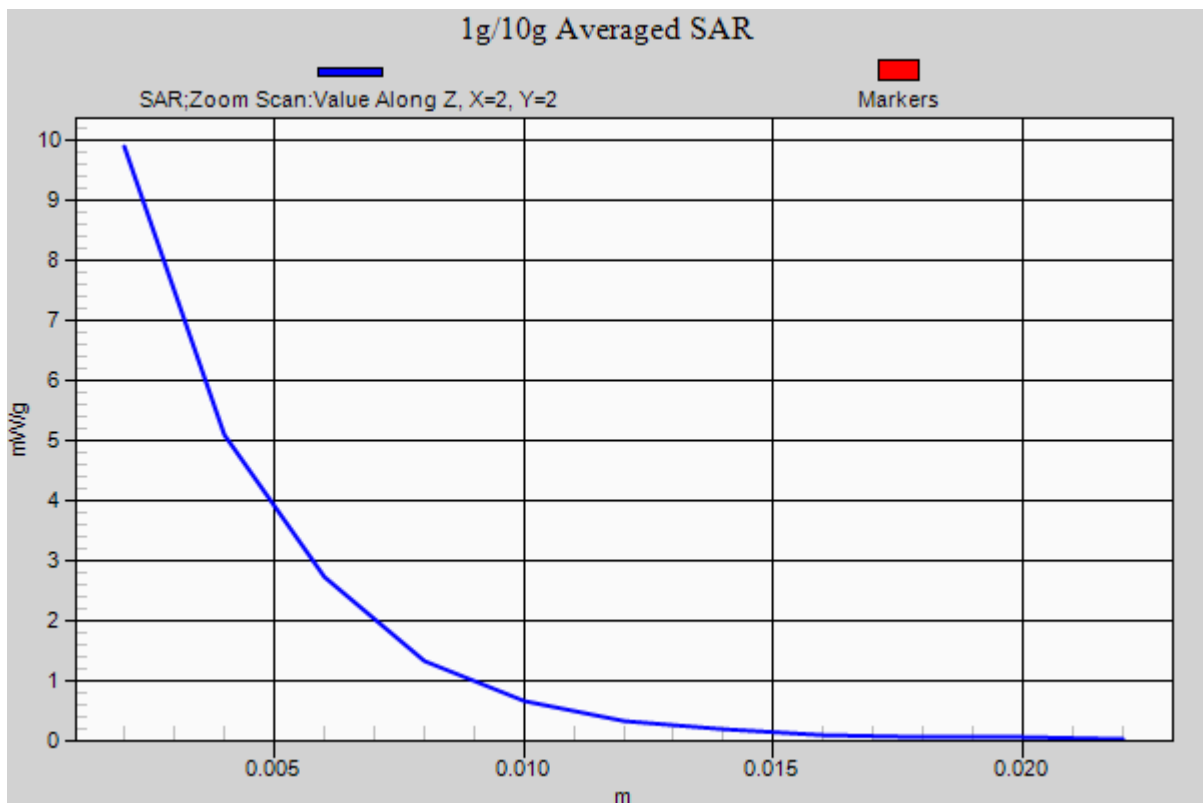
**Area Scan (61x91x1):** Measurement grid: dx=10mm, dy=10mm

**Zoom Scan (7x7x11)/Cube 0:** Measurement grid: dx=4mm, dy=4mm, dz=2mm

Power Drift = 0.00 dB

Peak SAR (extrapolated) = 35.430 mW/g

**SAR(1 g) = 7.78 W/kg; SAR(10 g) = 2.23 W/kg**



# DIGITAL EMC CO., LTD

**DUT: Dipole 5000 MHz; Type: D5GHzV2; Serial: D5GHzV2 - SN:1103**

Communication System: CW; Frequency: 5800 MHz; Duty Cycle: 1:1

Medium parameters used:  $f = 5800$  MHz;  $\sigma = 5.973$  mho/m;  $\epsilon_r = 46.608$ ;  $\rho = 1000$  kg/m<sup>3</sup>

Phantom section: Flat Section

## **DASY5 Configuration:**

Probe: EX3DV4 - SN3643; ConvF(3.8, 3.8, 3.8); Calibrated: 2012-01-27; ; Electronics: DAE4 Sn1335

Phantom: SAM with CRP\_20120521; Type: SAM; Serial: 1679

Measurement SW: DASY52, Version 52.8 (2); SEMCAD X Version 14.6.6 (6477)

Test Date: 2012-10-15; Ambient Temp: 22.0; Tissue Temp: 22.2

## **Dipole Validation**

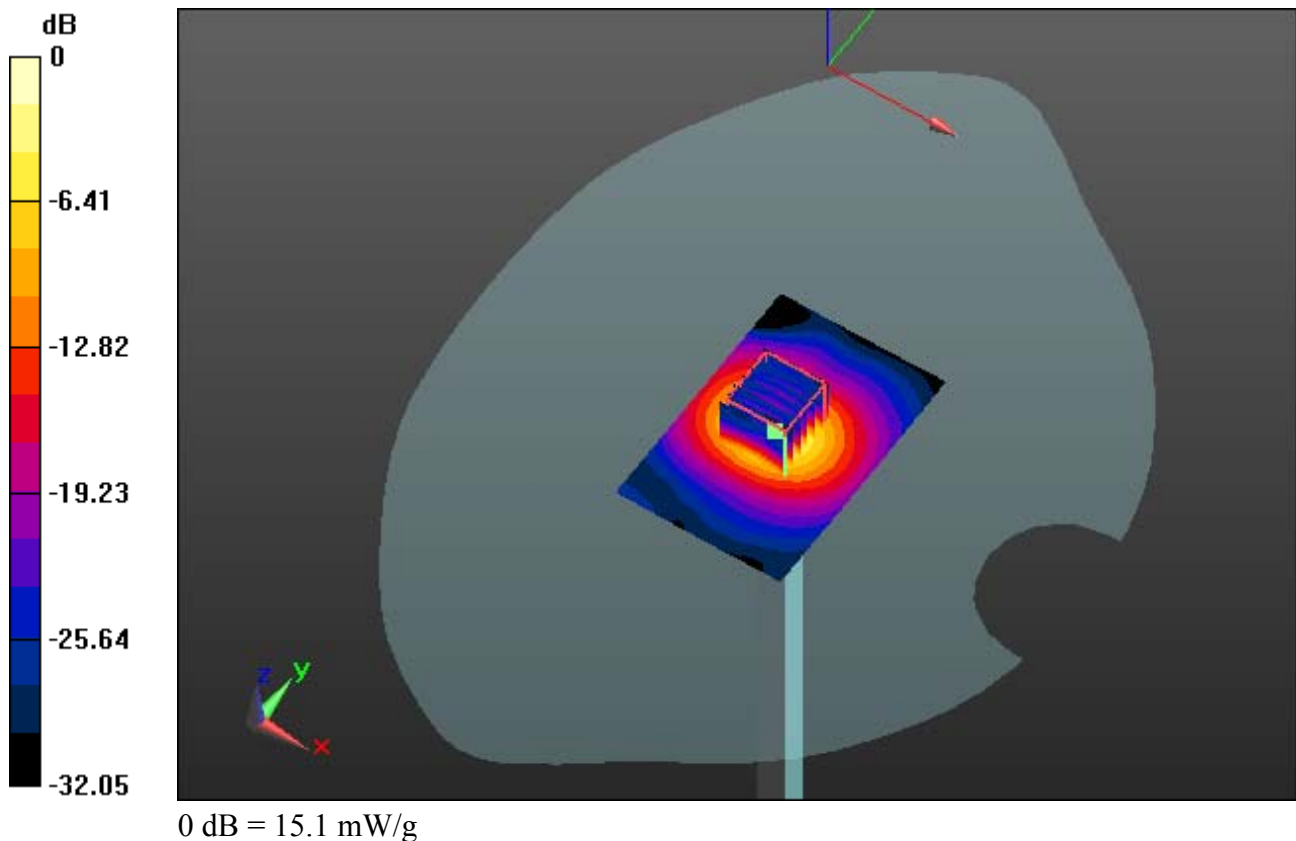
**Area Scan (61x91x1):** Measurement grid: dx=10mm, dy=10mm

**Zoom Scan (7x7x11)/Cube 0:** Measurement grid: dx=4mm, dy=4mm, dz=2mm

Power Drift = 0.10 dB

Peak SAR (extrapolated) = 31.976 mW/g

**SAR(1 g) = 7.23 W/kg; SAR(10 g) = 2.07 W/kg**





# DIGITAL EMC CO., LTD

**DUT: Dipole 5000 MHz; Type: D5GHzV2; Serial: D5GHzV2 - SN:1103**

Communication System: CW; Frequency: 5800 MHz; Duty Cycle: 1:1

Medium parameters used:  $f = 5800$  MHz;  $\sigma = 5.973$  mho/m;  $\epsilon_r = 46.608$ ;  $\rho = 1000$  kg/m<sup>3</sup>

Phantom section: Flat Section

## **DASY5 Configuration:**

Probe: EX3DV4 - SN3643; ConvF(3.8, 3.8, 3.8); Calibrated: 2012-01-27; ; Electronics: DAE4 Sn1335

Phantom: SAM with CRP\_20120521; Type: SAM; Serial: 1679

Measurement SW: DASY52, Version 52.8 (2); SEMCAD X Version 14.6.6 (6477)

Test Date: 2012-10-15; Ambient Temp: 22.0; Tissue Temp: 22.2

## **Dipole Validation**

**Area Scan (61x91x1):** Measurement grid: dx=10mm, dy=10mm

**Zoom Scan (7x7x11)/Cube 0:** Measurement grid: dx=4mm, dy=4mm, dz=2mm

Power Drift = 0.10 dB

Peak SAR (extrapolated) = 31.976 mW/g

**SAR(1 g) = 7.23 W/kg; SAR(10 g) = 2.07 W/kg**

