

Test Laboratory: HCT CO., LTD
EUT Type: GSM/WCDMA Phone with Bluetooth3.0, WIFI802.11 b/g/n
Liquid Temperature: 20.8 °C
Ambient Temperature: 21.0 °C
Test Date: Mar . 28, 2013
Plot NO. 49

DUT: LG-E440g; Type: Bar; Serial: #1

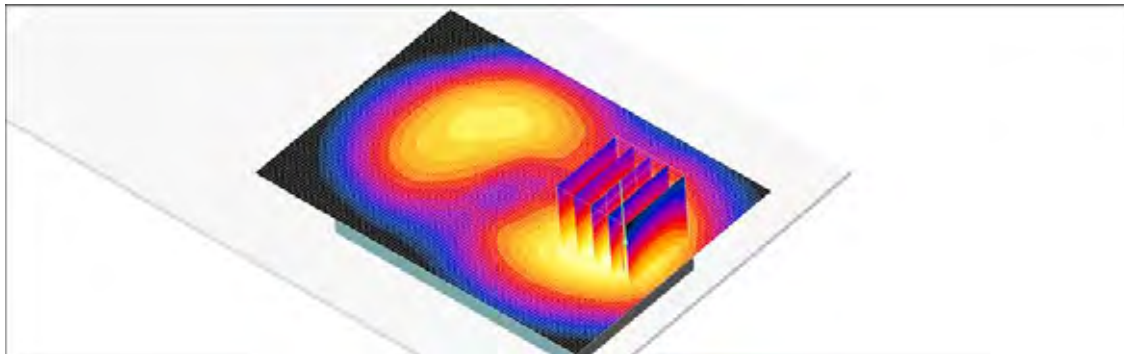
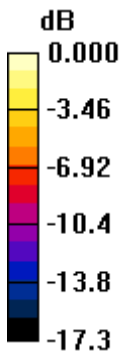
Communication System: WCDMA1900; Frequency: 1852.4 MHz;Duty Cycle: 1:1
Medium parameters used (interpolated): $f = 1852.4$ MHz; $\sigma = 1.51$ mho/m; $\epsilon_r = 52.3$; $\rho = 1000$ kg/m³
Phantom section: Center Section ; Measurement SW: DASY4, V4.7 Build 80; Postprocessing SW: SEMCAD, V1.8 Build 184

DASY4 Configuration:

- Probe: EX3DV4 - SN3863; ConvF(7.46, 7.46, 7.46); Calibrated: 2012-07-13
- Sensor-Surface: 4mm (Mechanical Surface Detection)
- Electronics: DAE4 Sn648; Calibrated: 2012-04-27
- Phantom: Triple Flat Phantom 5.1C_20120905; Type: QD 000 P51 CA

Body Front 9262/Area Scan (71x101x1): Measurement grid: dx=15mm, dy=15mm
Maximum value of SAR (interpolated) = 0.706 mW/g

Body Front 9262/Zoom Scan (5x5x7)/Cube 0: Measurement grid: dx=8mm, dy=8mm, dz=5mm
Reference Value = 9.17 V/m; Power Drift = 0.006 dB
Peak SAR (extrapolated) = 1.03 W/kg
SAR(1 g) = 0.643 mW/g; SAR(10 g) = 0.388 mW/g
Maximum value of SAR (measured) = 0.704 mW/g



0 dB = 0.704mW/g

Test Laboratory: HCT CO., LTD
EUT Type: GSM/WCDMA Phone with Bluetooth3.0, WIFI802.11 b/g/n
Liquid Temperature: 20.8 °C
Ambient Temperature: 21.0 °C
Test Date: Mar . 28, 2013
Plot NO. 50

DUT: LG-E440g; Type: Bar; Serial: #1

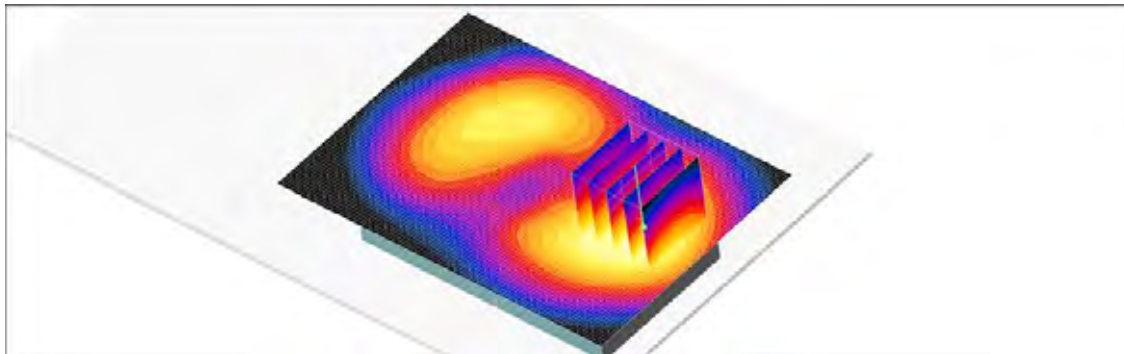
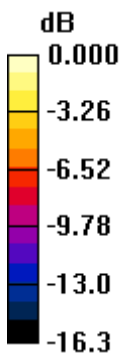
Communication System: WCDMA1900; Frequency: 1880 MHz;Duty Cycle: 1:1
Medium parameters used: $f = 1880$ MHz; $\sigma = 1.54$ mho/m; $\epsilon_r = 52.3$; $\rho = 1000$ kg/m³
Phantom section: Center Section ; Measurement SW: DASY4, V4.7 Build 80; Postprocessing SW: SEMCAD, V1.8 Build 184

DASY4 Configuration:

- Probe: EX3DV4 - SN3863; ConvF(7.46, 7.46, 7.46); Calibrated: 2012-07-13
- Sensor-Surface: 4mm (Mechanical Surface Detection)
- Electronics: DAE4 Sn648; Calibrated: 2012-04-27
- Phantom: Triple Flat Phantom 5.1C_20120905; Type: QD 000 P51 CA

Body Front 9400/Area Scan (71x101x1): Measurement grid: dx=15mm, dy=15mm
Maximum value of SAR (interpolated) = 0.916 mW/g

Body Front 9400/Zoom Scan (5x5x7)/Cube 0: Measurement grid: dx=8mm, dy=8mm, dz=5mm
Reference Value = 11.0 V/m; Power Drift = -0.045 dB
Peak SAR (extrapolated) = 1.33 W/kg
SAR(1 g) = 0.835 mW/g; SAR(10 g) = 0.503 mW/g
Maximum value of SAR (measured) = 0.910 mW/g



0 dB = 0.910mW/g

Test Laboratory: HCT CO., LTD
EUT Type: GSM/WCDMA Phone with Bluetooth3.0, WIFI802.11 b/g/n
Liquid Temperature: 20.8 °C
Ambient Temperature: 21.0 °C
Test Date: Mar . 28, 2013
Plot NO. 51

DUT: LG-E440g; Type: Bar; Serial: #1

Communication System: WCDMA1900; Frequency: 1907.6 MHz; Duty Cycle: 1:1
Medium parameters used (interpolated): $f = 1907.6$ MHz; $\sigma = 1.56$ mho/m; $\epsilon_r = 52.2$; $\rho = 1000$ kg/m³
Phantom section: Center Section ; Measurement SW: DASY4, V4.7 Build 80; Postprocessing SW: SEMCAD, V1.8 Build 184

DASY4 Configuration:

- Probe: EX3DV4 - SN3863; ConvF(7.46, 7.46, 7.46); Calibrated: 2012-07-13
- Sensor-Surface: 4mm (Mechanical Surface Detection)
- Electronics: DAE4 Sn648; Calibrated: 2012-04-27
- Phantom: Triple Flat Phantom 5.1C_20120905; Type: QD 000 P51 CA

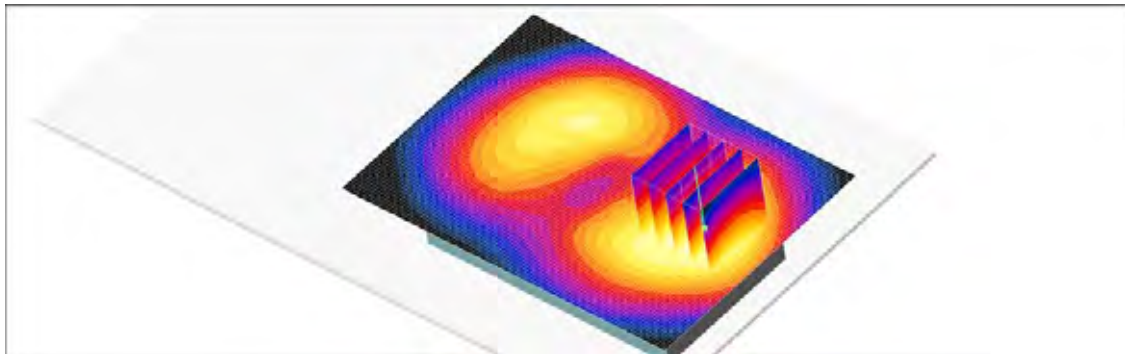
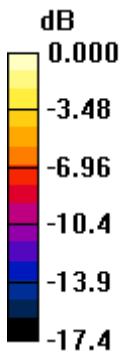
Body Front 9538/Area Scan (71x101x1): Measurement grid: dx=15mm, dy=15mm
Maximum value of SAR (interpolated) = 0.680 mW/g

Body Front 9538/Zoom Scan (5x5x7)/Cube 0: Measurement grid: dx=8mm, dy=8mm, dz=5mm
Reference Value = 9.32 V/m; Power Drift = -0.031 dB

Peak SAR (extrapolated) = 0.983 W/kg

SAR(1 g) = 0.614 mW/g; SAR(10 g) = 0.369 mW/g

Maximum value of SAR (measured) = 0.662 mW/g



0 dB = 0.662mW/g

Test Laboratory: HCT CO., LTD
EUT Type: GSM/WCDMA Phone with Bluetooth3.0, WIFI802.11 b/g/n
Liquid Temperature: 20.8 °C
Ambient Temperature: 21.0 °C
Test Date: Mar . 28, 2013
Plot NO. 52

DUT: LG-E440g; Type: Bar; Serial: #1

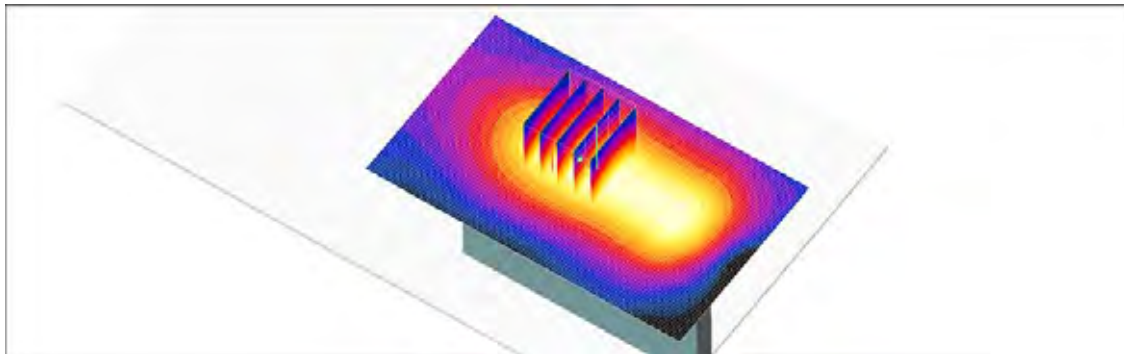
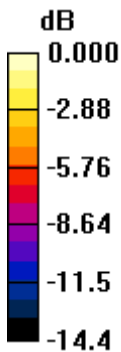
Communication System: WCDMA1900; Frequency: 1880 MHz;Duty Cycle: 1:1
Medium parameters used: $f = 1880$ MHz; $\sigma = 1.54$ mho/m; $\epsilon_r = 52.3$; $\rho = 1000$ kg/m³
Phantom section: Center Section ; Measurement SW: DASY4, V4.7 Build 80; Postprocessing SW: SEMCAD, V1.8 Build 184

DASY4 Configuration:

- Probe: EX3DV4 - SN3863; ConvF(7.46, 7.46, 7.46); Calibrated: 2012-07-13
- Sensor-Surface: 4mm (Mechanical Surface Detection)
- Electronics: DAE4 Sn648; Calibrated: 2012-04-27
- Phantom: Triple Flat Phantom 5.1C_20120905; Type: QD 000 P51 CA

Body Left 9400/Area Scan (61x101x1): Measurement grid: dx=15mm, dy=15mm
Maximum value of SAR (interpolated) = 0.244 mW/g

Body Left 9400/Zoom Scan (5x5x7)/Cube 0: Measurement grid: dx=8mm, dy=8mm, dz=5mm
Reference Value = 5.32 V/m; Power Drift = 0.029 dB
Peak SAR (extrapolated) = 0.354 W/kg
SAR(1 g) = 0.224 mW/g; SAR(10 g) = 0.137 mW/g
Maximum value of SAR (measured) = 0.242 mW/g



0 dB = 0.242mW/g

Test Laboratory: HCT CO., LTD
EUT Type: GSM/WCDMA Phone with Bluetooth3.0, WIFI802.11 b/g/n
Liquid Temperature: 20.8 °C
Ambient Temperature: 21.0 °C
Test Date: Mar . 28, 2013
Plot NO. 53

DUT: LG-E440g; Type: Bar; Serial: #1

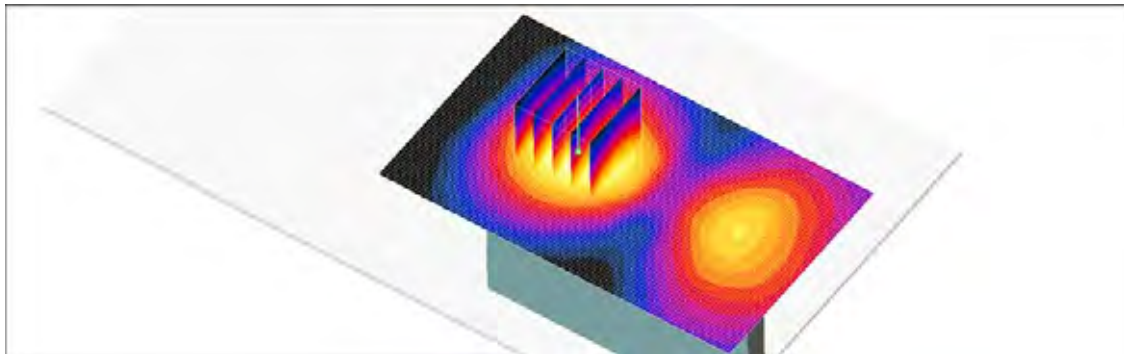
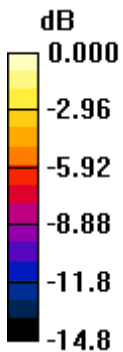
Communication System: WCDMA1900; Frequency: 1880 MHz;Duty Cycle: 1:1
Medium parameters used: $f = 1880$ MHz; $\sigma = 1.54$ mho/m; $\epsilon_r = 52.3$; $\rho = 1000$ kg/m³
Phantom section: Center Section ; Measurement SW: DASY4, V4.7 Build 80; Postprocessing SW: SEMCAD, V1.8 Build 184

DASY4 Configuration:

- Probe: EX3DV4 - SN3863; ConvF(7.46, 7.46, 7.46); Calibrated: 2012-07-13
- Sensor-Surface: 4mm (Mechanical Surface Detection)
- Electronics: DAE4 Sn648; Calibrated: 2012-04-27
- Phantom: Triple Flat Phantom 5.1C_20120905; Type: QD 000 P51 CA

Body Right 9400/Area Scan (61x101x1): Measurement grid: dx=15mm, dy=15mm
Maximum value of SAR (interpolated) = 0.279 mW/g

Body Right 9400/Zoom Scan (5x5x7)/Cube 0: Measurement grid: dx=8mm, dy=8mm, dz=5mm
Reference Value = 5.14 V/m; Power Drift = -0.125 dB
Peak SAR (extrapolated) = 0.399 W/kg
SAR(1 g) = 0.249 mW/g; SAR(10 g) = 0.146 mW/g
Maximum value of SAR (measured) = 0.272 mW/g



0 dB = 0.272mW/g

Test Laboratory: HCT CO., LTD
EUT Type: GSM/WCDMA Phone with Bluetooth3.0, WIFI802.11 b/g/n
Liquid Temperature: 20.8 °C
Ambient Temperature: 21.0 °C
Test Date: Mar . 28, 2013
Plot NO. 54

DUT: LG-E440g; Type: Bar; Serial: #1

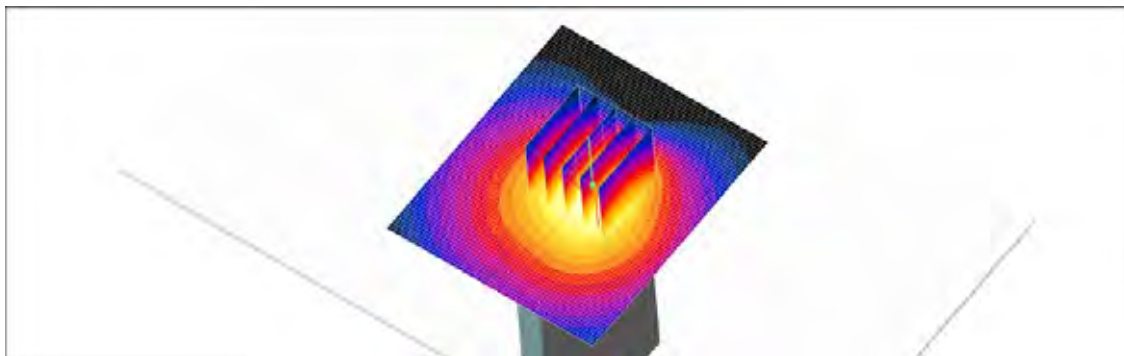
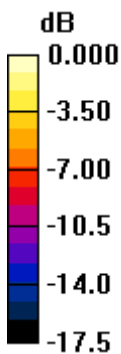
Communication System: WCDMA1900; Frequency: 1880 MHz;Duty Cycle: 1:1
Medium parameters used: $f = 1880$ MHz; $\sigma = 1.54$ mho/m; $\epsilon_r = 52.3$; $\rho = 1000$ kg/m³
Phantom section: Center Section ; Measurement SW: DASY4, V4.7 Build 80; Postprocessing SW: SEMCAD, V1.8 Build 184

DASY4 Configuration:

- Probe: EX3DV4 - SN3863; ConvF(7.46, 7.46, 7.46); Calibrated: 2012-07-13
- Sensor-Surface: 4mm (Mechanical Surface Detection)
- Electronics: DAE4 Sn648; Calibrated: 2012-04-27
- Phantom: Triple Flat Phantom 5.1C_20120905; Type: QD 000 P51 CA

Body Bottom 661 9400/Area Scan (71x61x1): Measurement grid: dx=15mm, dy=15mm
Maximum value of SAR (interpolated) = 0.789 mW/g

Body Bottom 661 9400/Zoom Scan (5x5x7)/Cube 0: Measurement grid: dx=8mm, dy=8mm, dz=5mm
Reference Value = 20.9 V/m; Power Drift = 0.016 dB
Peak SAR (extrapolated) = 1.14 W/kg
SAR(1 g) = 0.670 mW/g; SAR(10 g) = 0.379 mW/g
Maximum value of SAR (measured) = 0.740 mW/g



0 dB = 0.740mW/g

Test Laboratory: HCT CO., LTD
EUT Type: GSM/WCDMA Phone with Bluetooth3.0, WIFI802.11 b/g/n
Liquid Temperature: 20.9 °C
Ambient Temperature: 21.1 °C
Test Date: Mar . 27, 2013
Plot NO. 55

DUT: LG-E440g; Type: Bar; Serial: #1

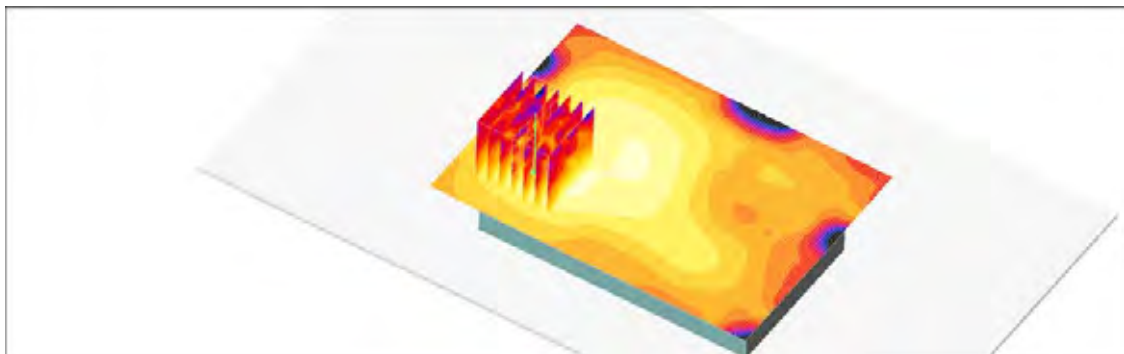
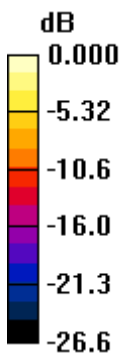
Communication System: 2450MHz FCC; Frequency: 2437 MHz;Duty Cycle: 1:1
Medium parameters used (interpolated): $f = 2437$ MHz; $\sigma = 1.97$ mho/m; $\epsilon_r = 53.6$; $\rho = 1000$ kg/m³
Phantom section: Center Section ; Measurement SW: DASY4, V4.7 Build 80; Postprocessing SW: SEMCAD, V1.8 Build 184

DASY4 Configuration:

- Probe: EX3DV4 - SN3863; ConvF(7, 7, 7); Calibrated: 2012-07-13
- Sensor-Surface: 4mm (Mechanical Surface Detection)
- Electronics: DAE4 Sn648; Calibrated: 2012-04-27
- Phantom: Triple Flat Phantom 5.1C_20120905; Type: QD 000 P51 CA

802.11b Body Rear 1Mbps 6ch/Area Scan (81x111x1): Measurement grid: dx=12mm, dy=12mm
Maximum value of SAR (interpolated) = 0.087 mW/g

802.11b Body Rear 1Mbps 6ch/Zoom Scan (7x7x7)/Cube 0: Measurement grid: dx=5mm, dy=5mm, dz=5mm
Reference Value = 5.65 V/m; Power Drift = -0.119 dB
Peak SAR (extrapolated) = 0.150 W/kg
SAR(1 g) = 0.073 mW/g; SAR(10 g) = 0.035 mW/g
Maximum value of SAR (measured) = 0.087 mW/g



0 dB = 0.087mW/g

Test Laboratory: HCT CO., LTD
EUT Type: GSM/WCDMA Phone with Bluetooth3.0, WIFI802.11 b/g/n
Liquid Temperature: 20.9 °C
Ambient Temperature: 21.1 °C
Test Date: Mar . 27, 2013
Plot NO. 56

DUT: LG-E440g; Type: Bar; Serial: #1

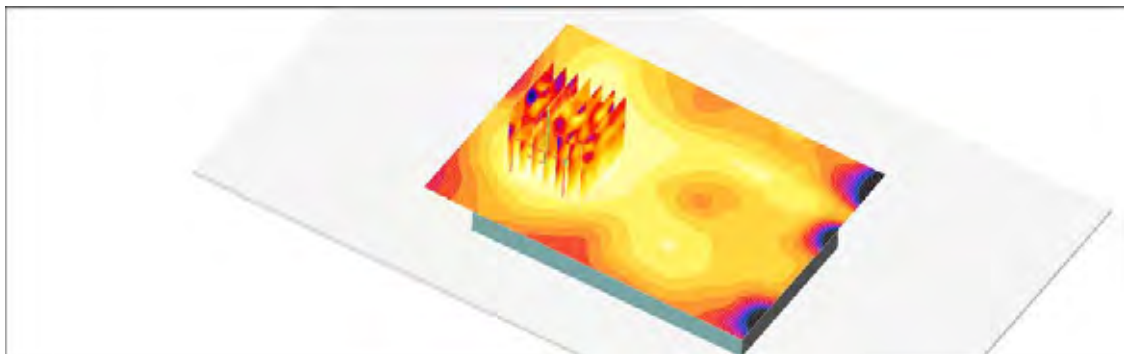
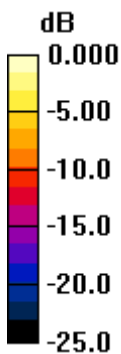
Communication System: 2450MHz FCC; Frequency: 2437 MHz;Duty Cycle: 1:1
Medium parameters used (interpolated): $f = 2437$ MHz; $\sigma = 1.97$ mho/m; $\epsilon_r = 53.6$; $\rho = 1000$ kg/m³
Phantom section: Center Section ; Measurement SW: DASY4, V4.7 Build 80; Postprocessing SW: SEMCAD, V1.8 Build 184

DASY4 Configuration:

- Probe: EX3DV4 - SN3863; ConvF(7, 7, 7); Calibrated: 2012-07-13
- Sensor-Surface: 4mm (Mechanical Surface Detection)
- Electronics: DAE4 Sn648; Calibrated: 2012-04-27
- Phantom: Triple Flat Phantom 5.1C_20120905; Type: QD 000 P51 CA

802.11b Body Front 1Mbps 6ch/Area Scan (81x111x1): Measurement grid: dx=12mm, dy=12mm
Maximum value of SAR (interpolated) = 0.034 mW/g

802.11b Body Front 1Mbps 6ch/Zoom Scan (7x7x7)/Cube 0: Measurement grid: dx=5mm, dy=5mm, dz=5mm
Reference Value = 2.66 V/m; Power Drift = -0.080 dB
Peak SAR (extrapolated) = 0.142 W/kg
SAR(1 g) = 0.030 mW/g; SAR(10 g) = 0.013 mW/g
Maximum value of SAR (measured) = 0.032 mW/g



0 dB = 0.032mW/g

Test Laboratory: HCT CO., LTD
EUT Type: GSM/WCDMA Phone with Bluetooth3.0, WIFI802.11 b/g/n
Liquid Temperature: 20.9 °C
Ambient Temperature: 21.1 °C
Test Date: Mar . 27, 2013
Plot NO. 57

DUT: LG-E440g; Type: Bar; Serial: #1

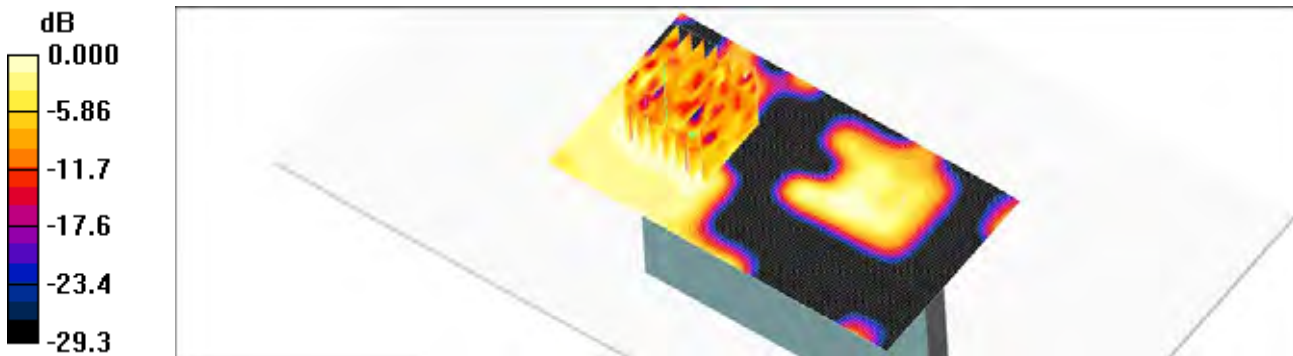
Communication System: 2450MHz FCC; Frequency: 2437 MHz;Duty Cycle: 1:1
Medium parameters used (interpolated): $f = 2437$ MHz; $\sigma = 1.97$ mho/m; $\epsilon_r = 53.6$; $\rho = 1000$ kg/m³
Phantom section: Center Section ; Measurement SW: DASY4, V4.7 Build 80; Postprocessing SW: SEMCAD, V1.8 Build 184

DASY4 Configuration:

- Probe: EX3DV4 - SN3863; ConvF(7, 7, 7); Calibrated: 2012-07-13
- Sensor-Surface: 4mm (Mechanical Surface Detection)
- Electronics: DAE4 Sn648; Calibrated: 2012-04-27
- Phantom: Triple Flat Phantom 5.1C_20120905; Type: QD 000 P51 CA

802.11b Body Right 1Mbps 6ch/Area Scan (61x111x1): Measurement grid: dx=12mm, dy=12mm
Maximum value of SAR (interpolated) = 0.033 mW/g

802.11b Body Right 1Mbps 6ch/Zoom Scan (7x7x7)/Cube 0: Measurement grid: dx=5mm, dy=5mm, dz=5mm
Reference Value = 2.08 V/m; Power Drift = -0.113 dB
Peak SAR (extrapolated) = 0.120 W/kg
SAR(1 g) = 0.028 mW/g; SAR(10 g) = 0.00907 mW/g
Maximum value of SAR (measured) = 0.029 mW/g



0 dB = 0.029mW/g

Test Laboratory: HCT CO., LTD
EUT Type: GSM/WCDMA Phone with Bluetooth3.0, WIFI802.11 b/g/n
Liquid Temperature: 20.9 °C
Ambient Temperature: 21.1 °C
Test Date: Mar . 27, 2013
Plot NO. 58

DUT: LG-E440g; Type: Bar; Serial: #1

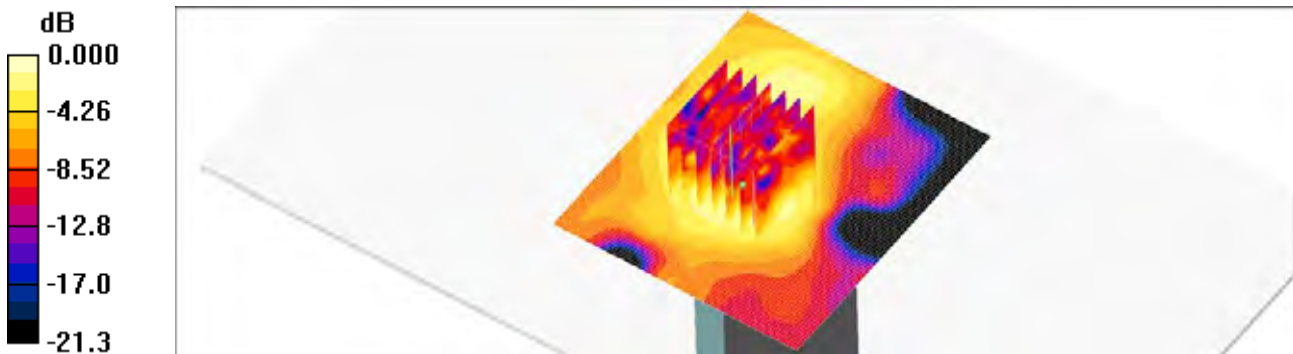
Communication System: 2450MHz FCC; Frequency: 2437 MHz;Duty Cycle: 1:1
Medium parameters used (interpolated): $f = 2437$ MHz; $\sigma = 1.97$ mho/m; $\epsilon_r = 53.6$; $\rho = 1000$ kg/m³
Phantom section: Center Section ; Measurement SW: DASY4, V4.7 Build 80; Postprocessing SW: SEMCAD, V1.8 Build 184

DASY4 Configuration:

- Probe: EX3DV4 - SN3863; ConvF(7, 7, 7); Calibrated: 2012-07-13
- Sensor-Surface: 4mm (Mechanical Surface Detection)
- Electronics: DAE4 Sn648; Calibrated: 2012-04-27
- Phantom: Triple Flat Phantom 5.1C_20120905; Type: QD 000 P51 CA

802.11b Body Top 1Mbps 6ch/Area Scan (81x71x1): Measurement grid: dx=12mm, dy=12mm
Maximum value of SAR (interpolated) = 0.038 mW/g

802.11b Body Top 1Mbps 6ch/Zoom Scan (7x7x7)/Cube 0: Measurement grid: dx=5mm, dy=5mm, dz=5mm
Reference Value = 4.12 V/m; Power Drift = 0.009 dB
Peak SAR (extrapolated) = 0.114 W/kg
SAR(1 g) = 0.034 mW/g; SAR(10 g) = 0.016 mW/g
Maximum value of SAR (measured) = 0.042 mW/g



0 dB = 0.042mW/g

Test Laboratory: HCT CO., LTD
EUT Type: GSM/WCDMA Phone with Bluetooth3.0, WIFI802.11 b/g/n
Liquid Temperature: 20.9 °C
Ambient Temperature: 21.1 °C
Test Date: Mar . 27, 2013
Plot NO. 59

DUT: LG-E440g; Type: Bar; Serial: #1

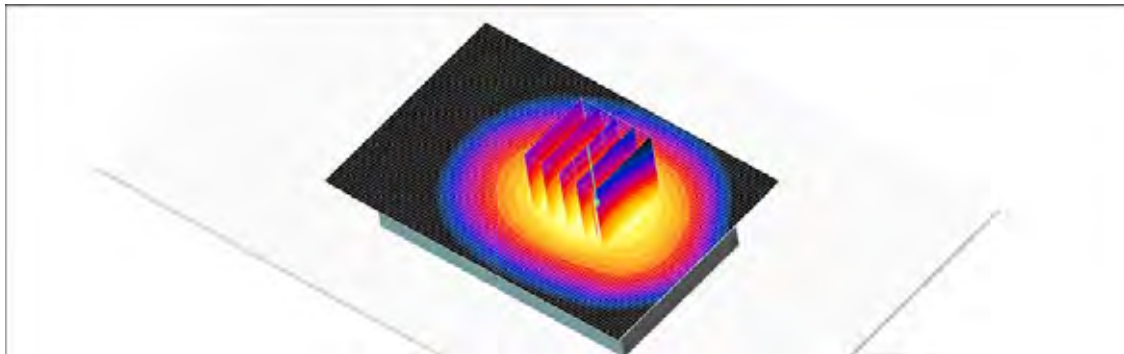
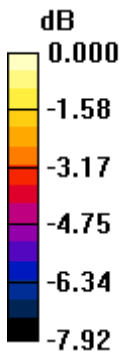
Communication System: GSM 850; Frequency: 836.6 MHz;Duty Cycle: 1:8.3
Medium parameters used (interpolated): $f = 836.6$ MHz; $\sigma = 0.987$ mho/m; $\epsilon_r = 56.8$; $\rho = 1000$ kg/m³
Phantom section: Center Section ; Measurement SW: DASY4, V4.7 Build 80; Postprocessing SW: SEMCAD, V1.8 Build 184

DASY4 Configuration:

- Probe: EX3DV4 - SN3863; ConvF(9.25, 9.25, 9.25); Calibrated: 2012-07-13
- Sensor-Surface: 4mm (Mechanical Surface Detection)
- Electronics: DAE4 Sn648; Calibrated: 2012-04-27
- Phantom: Triple Flat Phantom 5.1C_20120905; Type: QD 000 P51 CA

Body-worn Rear 190/Area Scan (61x91x1): Measurement grid: dx=15mm, dy=15mm
Maximum value of SAR (interpolated) = 0.724 mW/g

Body-worn Rear 190/Zoom Scan (5x5x7)/Cube 0: Measurement grid: dx=8mm, dy=8mm, dz=5mm
Reference Value = 23.4 V/m; Power Drift = 0.091 dB
Peak SAR (extrapolated) = 0.819 W/kg
SAR(1 g) = 0.690 mW/g; SAR(10 g) = 0.545 mW/g
Maximum value of SAR (measured) = 0.721 mW/g



0 dB = 0.721mW/g

Test Laboratory: HCT CO., LTD
EUT Type: GSM/WCDMA Phone with Bluetooth3.0, WIFI802.11 b/g/n
Liquid Temperature: 20.9 °C
Ambient Temperature: 21.1 °C
Test Date: Mar . 27, 2013
Plot NO. 60

DUT: LG-E440g; Type: Bar; Serial: #1

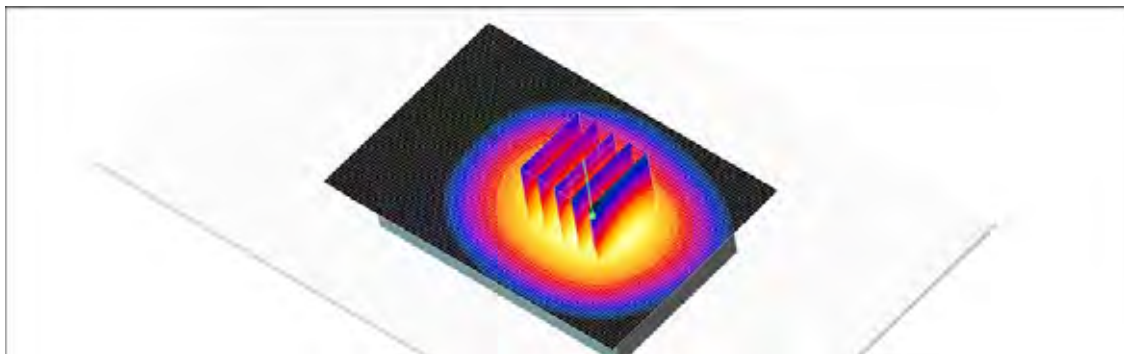
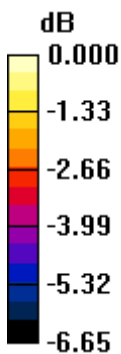
Communication System: GSM 850; Frequency: 836.6 MHz;Duty Cycle: 1:8.3
Medium parameters used (interpolated): $f = 836.6$ MHz; $\sigma = 0.987$ mho/m; $\epsilon_r = 56.8$; $\rho = 1000$ kg/m³
Phantom section: Center Section ; Measurement SW: DASY4, V4.7 Build 80; Postprocessing SW: SEMCAD, V1.8 Build 184

DASY4 Configuration:

- Probe: EX3DV4 - SN3863; ConvF(9.25, 9.25, 9.25); Calibrated: 2012-07-13
- Sensor-Surface: 4mm (Mechanical Surface Detection)
- Electronics: DAE4 Sn648; Calibrated: 2012-04-27
- Phantom: Triple Flat Phantom 5.1C_20120905; Type: QD 000 P51 CA

Body-worn Front 190/Area Scan (61x91x1): Measurement grid: dx=15mm, dy=15mm
Maximum value of SAR (interpolated) = 0.454 mW/g

Body-worn Front 190/Zoom Scan (5x5x7)/Cube 0: Measurement grid: dx=8mm, dy=8mm, dz=5mm
Reference Value = 19.2 V/m; Power Drift = -0.007 dB
Peak SAR (extrapolated) = 0.508 W/kg
SAR(1 g) = 0.439 mW/g; SAR(10 g) = 0.358 mW/g
Maximum value of SAR (measured) = 0.452 mW/g



0 dB = 0.452mW/g

Test Laboratory: HCT CO., LTD
EUT Type: GSM/WCDMA Phone with Bluetooth3.0, WIFI802.11 b/g/n
Liquid Temperature: 20.8 °C
Ambient Temperature: 21.0 °C
Test Date: Mar . 28, 2013
Plot NO. 61

DUT: LG-E440g; Type: Bar; Serial: #1

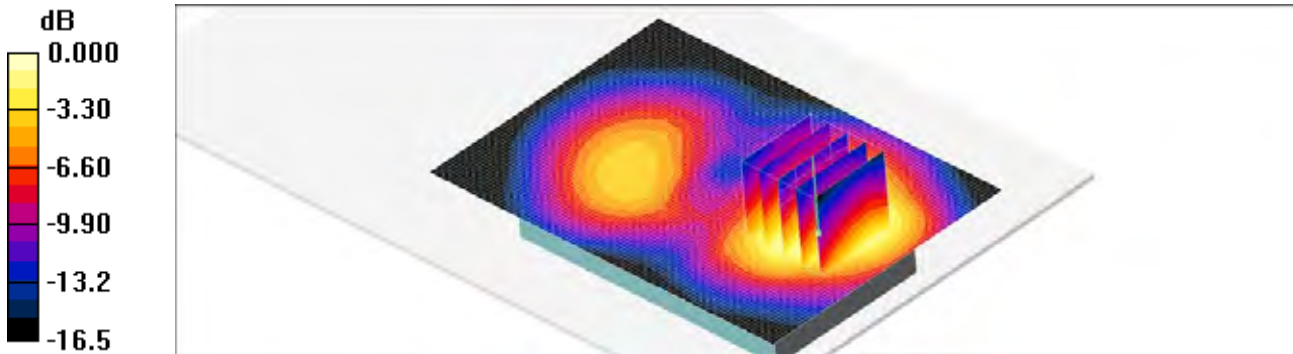
Communication System: GSM 1900; Frequency: 1880 MHz;Duty Cycle: 1:8.3
Medium parameters used: $f = 1880$ MHz; $\sigma = 1.54$ mho/m; $\epsilon_r = 52.3$; $\rho = 1000$ kg/m³
Phantom section: Center Section ; Measurement SW: DASY4, V4.7 Build 80; Postprocessing SW: SEMCAD, V1.8 Build 184

DASY4 Configuration:

- Probe: EX3DV4 - SN3863; ConvF(7.46, 7.46, 7.46); Calibrated: 2012-07-13
- Sensor-Surface: 4mm (Mechanical Surface Detection)
- Electronics: DAE4 Sn648; Calibrated: 2012-04-27
- Phantom: Triple Flat Phantom 5.1C_20120905; Type: QD 000 P51 CA

Body worn Voice Rear 661/Area Scan (71x101x1): Measurement grid: dx=15mm, dy=15mm
Maximum value of SAR (interpolated) = 0.461 mW/g

Body worn Voice Rear 661/Zoom Scan (5x5x7)/Cube 0: Measurement grid: dx=8mm, dy=8mm, dz=5mm
Reference Value = 6.74 V/m; Power Drift = -0.089 dB
Peak SAR (extrapolated) = 0.670 W/kg
SAR(1 g) = 0.423 mW/g; SAR(10 g) = 0.259 mW/g
Maximum value of SAR (measured) = 0.451 mW/g



0 dB = 0.451mW/g

Test Laboratory: HCT CO., LTD
EUT Type: GSM/WCDMA Phone with Bluetooth3.0, WIFI802.11 b/g/n
Liquid Temperature: 20.8 °C
Ambient Temperature: 21.0 °C
Test Date: Mar . 28, 2013
Plot NO. 62

DUT: LG-E440g; Type: Bar; Serial: #1

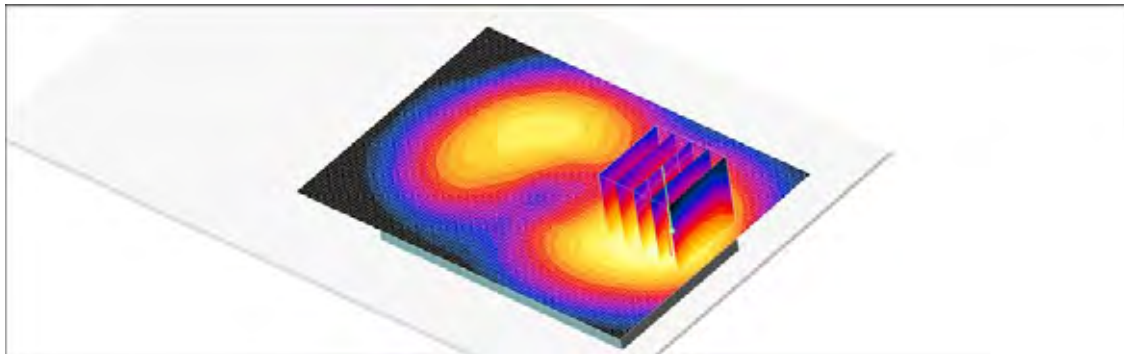
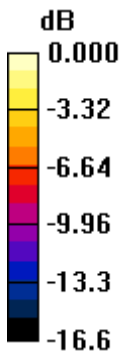
Communication System: GSM 1900; Frequency: 1880 MHz;Duty Cycle: 1:8.3
Medium parameters used: $f = 1880$ MHz; $\sigma = 1.54$ mho/m; $\epsilon_r = 52.3$; $\rho = 1000$ kg/m³
Phantom section: Center Section ; Measurement SW: DASY4, V4.7 Build 80; Postprocessing SW: SEMCAD, V1.8 Build 184

DASY4 Configuration:

- Probe: EX3DV4 - SN3863; ConvF(7.46, 7.46, 7.46); Calibrated: 2012-07-13
- Sensor-Surface: 4mm (Mechanical Surface Detection)
- Electronics: DAE4 Sn648; Calibrated: 2012-04-27
- Phantom: Triple Flat Phantom 5.1C_20120905; Type: QD 000 P51 CA

Body worn Voice Front 661/Area Scan (71x101x1): Measurement grid: dx=15mm, dy=15mm
Maximum value of SAR (interpolated) = 0.436 mW/g

Body worn Voice Front 661/Zoom Scan (5x5x7)/Cube 0: Measurement grid: dx=8mm, dy=8mm, dz=5mm
Reference Value = 6.53 V/m; Power Drift = 0.020 dB
Peak SAR (extrapolated) = 0.612 W/kg
SAR(1 g) = 0.392 mW/g; SAR(10 g) = 0.239 mW/g
Maximum value of SAR (measured) = 0.426 mW/g



0 dB = 0.426mW/g

Test Laboratory: HCT CO., LTD
EUT Type: GSM/WCDMA Phone with Bluetooth3.0, WIFI802.11 b/g/n
Liquid Temperature: 20.9 °C
Ambient Temperature: 21.1 °C
Test Date: Mar . 27, 2013
Plot NO. 63

DUT: LG-E440g; Type: Bar; Serial: #1

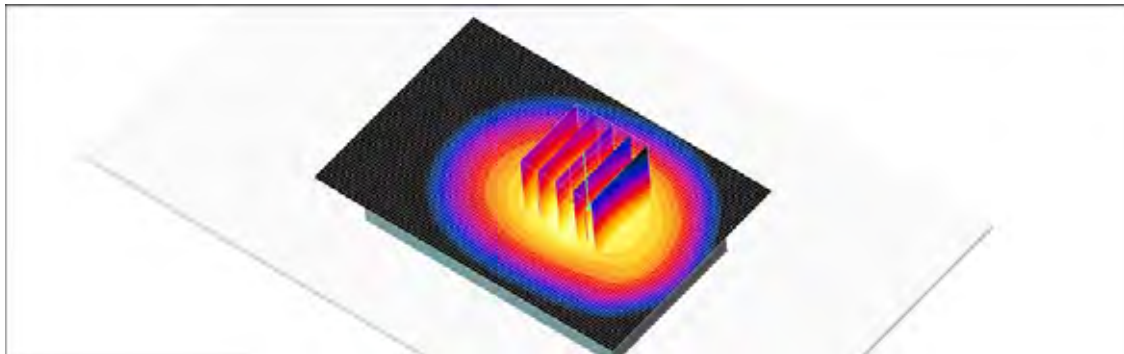
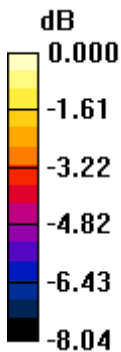
Communication System: GSM 850; Frequency: 824.2 MHz;Duty Cycle: 1:2.075
Medium parameters used: $f = 825$ MHz; $\sigma = 0.979$ mho/m; $\epsilon_r = 56.9$; $\rho = 1000$ kg/m³
Phantom section: Center Section ; Measurement SW: DASY4, V4.7 Build 80; Postprocessing SW: SEMCAD, V1.8 Build 184

DASY4 Configuration:

- Probe: EX3DV4 - SN3863; ConvF(9.25, 9.25, 9.25); Calibrated: 2012-07-13
- Sensor-Surface: 4mm (Mechanical Surface Detection)
- Electronics: DAE4 Sn648; Calibrated: 2012-04-27
- Phantom: Triple Flat Phantom 5.1C_20120905; Type: QD 000 P51 CA

Body Rear 4Tx 128 Repeation/Area Scan (61x91x1): Measurement grid: dx=15mm, dy=15mm
Maximum value of SAR (interpolated) = 1.18 mW/g

Body Rear 4Tx 128 Repeation/Zoom Scan (5x5x7)/Cube 0: Measurement grid: dx=8mm, dy=8mm, dz=5mm
Reference Value = 30.2 V/m; Power Drift = 0.038 dB
Peak SAR (extrapolated) = 1.32 W/kg
SAR(1 g) = 1.12 mW/g; SAR(10 g) = 0.888 mW/g
Maximum value of SAR (measured) = 1.18 mW/g



0 dB = 1.18mW/g

Test Laboratory: HCT CO., LTD
EUT Type: GSM/WCDMA Phone with Bluetooth3.0, WIFI802.11 b/g/n
Liquid Temperature: 20.8 °C
Ambient Temperature: 21.0 °C
Test Date: Mar . 28, 2013
Plot NO. 64

DUT: LG-E440g; Type: Bar; Serial: #1

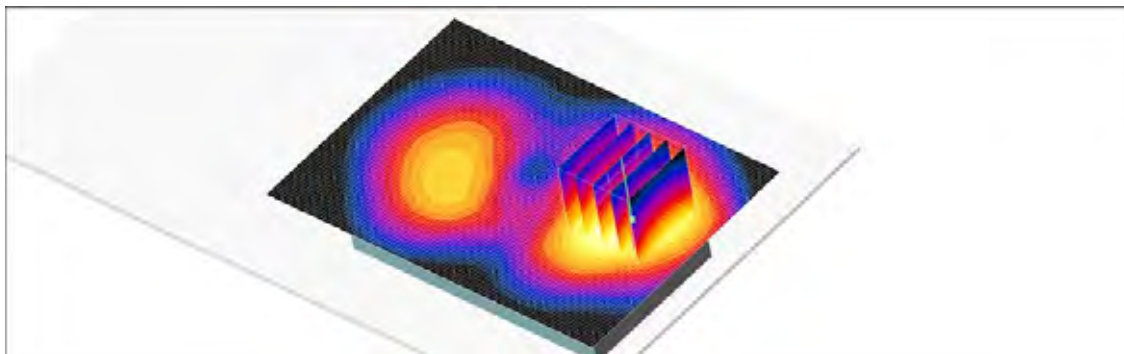
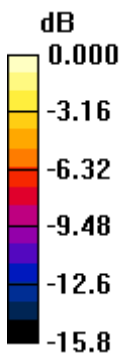
Communication System: WCDMA1900; Frequency: 1880 MHz;Duty Cycle: 1:1
Medium parameters used: $f = 1880$ MHz; $\sigma = 1.54$ mho/m; $\epsilon_r = 52.3$; $\rho = 1000$ kg/m³
Phantom section: Center Section ; Measurement SW: DASY4, V4.7 Build 80; Postprocessing SW: SEMCAD, V1.8 Build 184

DASY4 Configuration:

- Probe: EX3DV4 - SN3863; ConvF(7.46, 7.46, 7.46); Calibrated: 2012-07-13
- Sensor-Surface: 4mm (Mechanical Surface Detection)
- Electronics: DAE4 Sn648; Calibrated: 2012-04-27
- Phantom: Triple Flat Phantom 5.1C_20120905; Type: QD 000 P51 CA

Body Rear 9400 Repeation /Area Scan (71x101x1): Measurement grid: dx=15mm, dy=15mm
Maximum value of SAR (interpolated) = 0.999 mW/g

Body Rear 9400 Repeation /Zoom Scan (5x5x7)/Cube 0: Measurement grid: dx=8mm, dy=8mm, dz=5mm
Reference Value = 10.0 V/m; Power Drift = -0.013 dB
Peak SAR (extrapolated) = 1.46 W/kg
SAR(1 g) = 0.921 mW/g; SAR(10 g) = 0.558 mW/g
Maximum value of SAR (measured) = 1.01 mW/g



0 dB = 1.01mW/g

Test Laboratory: HCT CO., LTD
EUT Type: GSM/WCDMA Phone with Bluetooth3.0, WIFI802.11 b/g/n
Liquid Temperature: 21.2 °C
Ambient Temperature: 21.4 °C
Test Date: Mar . 25, 2013
Plot NO. 5

DUT: LG-E440g; Type: Bar; Serial: #1

Communication System: GSM 850; Frequency: 836.6 MHz;Duty Cycle: 1:2.075
Medium parameters used (interpolated): $f = 836.6$ MHz; $\sigma = 0.92$ mho/m; $\epsilon_r = 40.4$; $\rho = 1000$ kg/m³
Phantom section: Left Section : Measurement SW: DASY4, V4.7 Build 71; Postprocessing SW: SEMCAD, V1.8 Build 184

DASY4 Configuration:

- Probe: EX3DV4 - SN3863; ConvF(9.3, 9.3, 9.3); Calibrated: 2012-07-13
- Sensor-Surface: 4mm (Mechanical Surface Detection)
- Electronics: DAE4 Sn648; Calibrated: 2012-04-27
- Phantom: SAM 835/900 MHz; Type: SAM

Left touch 190 GPRS 4Tx/Area Scan (61x101x1): Measurement grid: dx=15mm, dy=15mm
Maximum value of SAR (interpolated) = 0.548 mW/g

Left touch 190 GPRS 4Tx/Zoom Scan (5x5x7)/Cube 0: Measurement grid: dx=8mm, dy=8mm, dz=5mm
Reference Value = 5.89 V/m; Power Drift = -0.031 dB
Peak SAR (extrapolated) = 0.643 W/kg
SAR(1 g) = 0.515 mW/g; SAR(10 g) = 0.386 mW/g
Maximum value of SAR (measured) = 0.535 mW/g



Test Laboratory: HCT CO., LTD
EUT Type: GSM/WCDMA Phone with Bluetooth3.0, WIFI802.11 b/g/n
Liquid Temperature: 21.1 °C
Ambient Temperature: 21.3 °C
Test Date: Mar . 26, 2013
Plot NO. 13

DUT: LG-E440g; Type: Bar; Serial: #1

Communication System: GSM 1900; Frequency: 1880 MHz;Duty Cycle: 1:2.075
Medium parameters used: $f = 1880$ MHz; $\sigma = 1.35$ mho/m; $\epsilon_r = 40.9$; $\rho = 1000$ kg/m³
Phantom section: Left Section ; Measurement SW: DASY4, V4.7 Build 71; Postprocessing SW: SEMCAD, V1.8 Build 184

DASY4 Configuration:

- Probe: EX3DV4 - SN3863; ConvF(8.22, 8.22, 8.22); Calibrated: 2012-07-13
- Sensor-Surface: 4mm (Mechanical Surface Detection)
- Electronics: DAE4 Sn648; Calibrated: 2012-04-27
- Phantom: SAM 1800/1900 MHz; Type: SAM

Left touch 661 4Tx/Area Scan (61x101x1): Measurement grid: dx=15mm, dy=15mm
Maximum value of SAR (interpolated) = 0.489 mW/g

Left touch 661 4Tx/Zoom Scan (5x5x7)/Cube 0: Measurement grid: dx=8mm, dy=8mm, dz=5mm
Reference Value = 7.32 V/m; Power Drift = -0.016 dB
Peak SAR (extrapolated) = 0.712 W/kg
SAR(1 g) = 0.441 mW/g; SAR(10 g) = 0.269 mW/g
Maximum value of SAR (measured) = 0.461 mW/g



Test Laboratory: HCT CO., LTD
EUT Type: GSM/WCDMA Phone with Bluetooth3.0, WIFI802.11 b/g/n
Liquid Temperature: 21.2 °C
Ambient Temperature: 21.4 °C
Test Date: Mar . 25, 2013
Plot NO. 19

DUT: LG-E440g; Type: Bar; Serial: #1

Communication System: WCDMA850; Frequency: 836.6 MHz; Duty Cycle: 1:1
Medium parameters used (interpolated): $f = 836.6$ MHz; $\sigma = 0.92$ mho/m; $\epsilon_r = 40.4$; $\rho = 1000$ kg/m³
Phantom section: Right Section ; Measurement SW: DASY4, V4.7 Build 71; Postprocessing SW: SEMCAD, V1.8 Build 184

DASY4 Configuration:

- Probe: EX3DV4 - SN3863; ConvF(9.3, 9.3, 9.3); Calibrated: 2012-07-13
- Sensor-Surface: 4mm (Mechanical Surface Detection)
- Electronics: DAE4 Sn648; Calibrated: 2012-04-27
- Phantom: SAM 835/900 MHz; Type: SAM

Right touch 4183/Area Scan (61x101x1): Measurement grid: dx=15mm, dy=15mm
Maximum value of SAR (interpolated) = 0.427 mW/g

Right touch 4183/Zoom Scan (5x5x7)/Cube 0: Measurement grid: dx=8mm, dy=8mm, dz=5mm
Reference Value = 5.26 V/m; Power Drift = -0.114 dB
Peak SAR (extrapolated) = 0.495 W/kg
SAR(1 g) = 0.411 mW/g; SAR(10 g) = 0.312 mW/g
Maximum value of SAR (measured) = 0.432 mW/g



Test Laboratory: HCT CO., LTD
EUT Type: GSM/WCDMA Phone with Bluetooth3.0, WIFI802.11 b/g/n
Liquid Temperature: 21.1 °C
Ambient Temperature: 21.3 °C
Test Date: Mar . 26, 2013
Plot NO. 23

DUT: LG-E440g; Type: Bar; Serial: #1

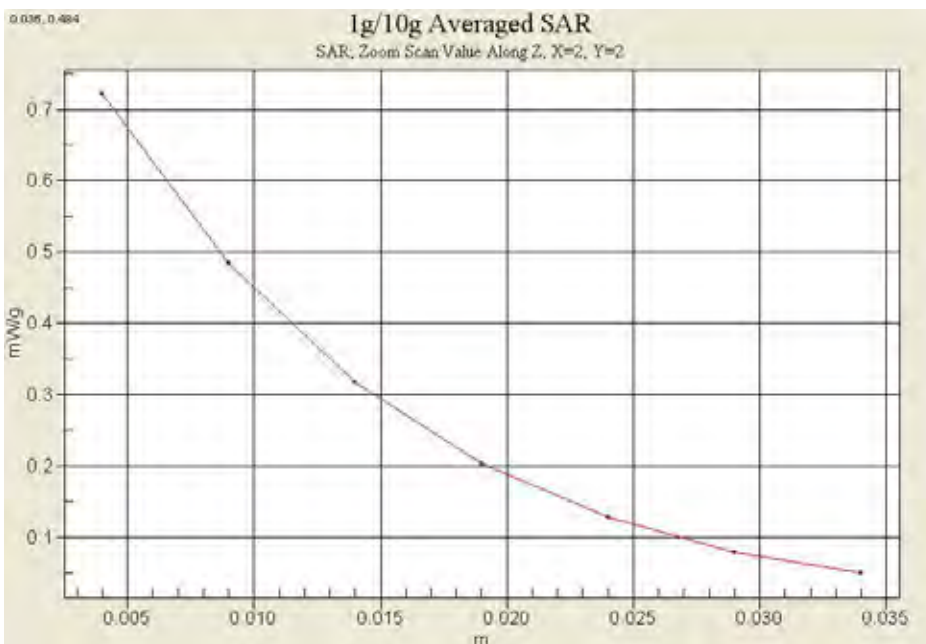
Communication System: WCDMA1900; Frequency: 1880 MHz;Duty Cycle: 1:1
Medium parameters used: $f = 1880$ MHz; $\sigma = 1.35$ mho/m; $\epsilon_r = 40.9$; $\rho = 1000$ kg/m³
Phantom section: Right Section ; Measurement SW: DASY4, V4.7 Build 71; Postprocessing SW: SEMCAD, V1.8 Build 184

DASY4 Configuration:

- Probe: EX3DV4 - SN3863; ConvF(8.22, 8.22, 8.22); Calibrated: 2012-07-13
- Sensor-Surface: 4mm (Mechanical Surface Detection)
- Electronics: DAE4 Sn648; Calibrated: 2012-04-27
- Phantom: SAM 1800/1900 MHz; Type: SAM

Right touch 9400/Area Scan (61x101x1): Measurement grid: dx=15mm, dy=15mm
Maximum value of SAR (interpolated) = 0.713 mW/g

Right touch 9400/Zoom Scan (5x5x7)/Cube 0: Measurement grid: dx=8mm, dy=8mm, dz=5mm
Reference Value = 8.79 V/m; Power Drift = 0.012 dB
Peak SAR (extrapolated) = 0.998 W/kg
SAR(1 g) = 0.661 mW/g; SAR(10 g) = 0.403 mW/g
Maximum value of SAR (measured) = 0.722 mW/g



Test Laboratory: HCT CO., LTD
EUT Type: GSM/WCDMA Phone with Bluetooth3.0, WIFI802.11 b/g/n
Liquid Temperature: 20.9 °C
Ambient Temperature: 21.1 °C
Test Date: Mar . 27, 2013
Plot NO. 25

DUT: LG-E440g; Type: Bar; Serial: #1

Communication System: 2450MHz FCC; Frequency: 2437 MHz;Duty Cycle: 1:1
Medium parameters used (interpolated): $f = 2437$ MHz; $\sigma = 1.81$ mho/m; $\epsilon_r = 38.1$; $\rho = 1000$ kg/m³
Phantom section: Left Section : Measurement SW: DASY4, V4.7 Build 71; Postprocessing SW: SEMCAD, V1.8 Build 184

DASY4 Configuration:

- Probe: EX3DV4 - SN3863; ConvF(7.19, 7.19, 7.19); Calibrated: 2012-07-13
- Sensor-Surface: 4mm (Mechanical Surface Detection)
- Electronics: DAE4 Sn648; Calibrated: 2012-04-27
- Phantom: 1800/1900 Phantom; Type: SAM

Left touch 6ch 1Mbps/Area Scan (71x121x1): Measurement grid: dx=12mm, dy=12mm
Maximum value of SAR (interpolated) = 0.198 mW/g

Left touch 6ch 1Mbps/Zoom Scan (7x7x7)/Cube 0: Measurement grid: dx=5mm, dy=5mm, dz=5mm
Reference Value = 5.83 V/m; Power Drift = -0.176 dB
Peak SAR (extrapolated) = 0.459 W/kg
SAR(1 g) = 0.182 mW/g; SAR(10 g) = 0.086 mW/g
Maximum value of SAR (measured) = 0.197 mW/g



Test Laboratory: HCT CO., LTD
EUT Type: GSM/WCDMA Phone with Bluetooth3.0, WIFI802.11 b/g/n
Liquid Temperature: 20.9 °C
Ambient Temperature: 21.1 °C
Test Date: Mar . 27, 2013
Plot NO. 31

DUT: LG-E440g; Type: Bar; Serial: #1

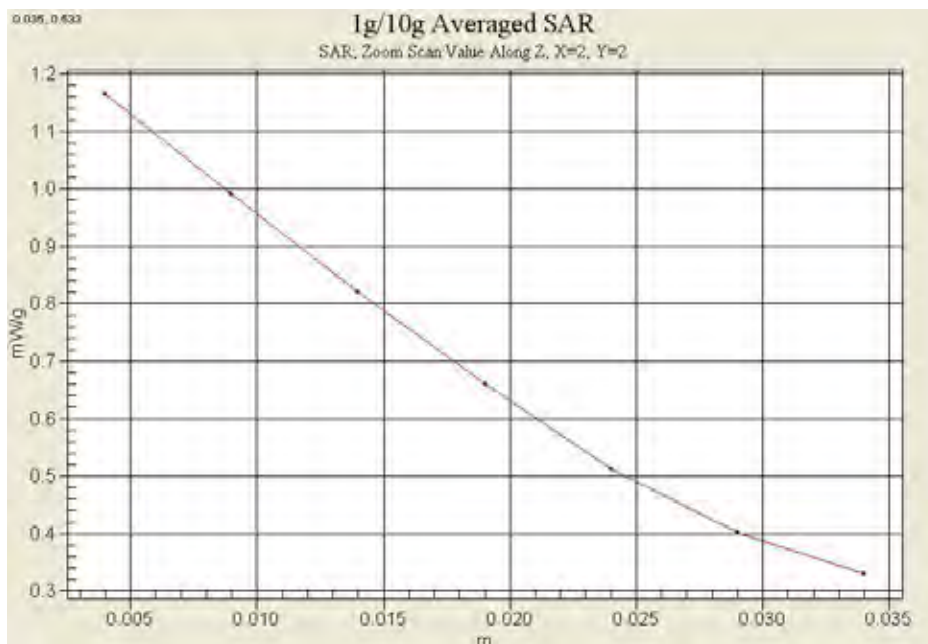
Communication System: GSM 850; Frequency: 849.8 MHz;Duty Cycle: 1:2.075
Medium parameters used: $f = 850$ MHz; $\sigma = 1$ mho/m; $\epsilon_r = 56.7$; $\rho = 1000$ kg/m³
Phantom section: Center Section ; Measurement SW: DASY4, V4.7 Build 80; Postprocessing SW: SEMCAD, V1.8 Build 184

DASY4 Configuration:

- Probe: EX3DV4 - SN3863; ConvF(9.25, 9.25, 9.25); Calibrated: 2012-07-13
- Sensor-Surface: 4mm (Mechanical Surface Detection)
- Electronics: DAE4 Sn648; Calibrated: 2012-04-27
- Phantom: Triple Flat Phantom 5.1C_20120905; Type: QD 000 P51 CA

Body Rear 4Tx 251/Area Scan (61x91x1): Measurement grid: dx=15mm, dy=15mm
Maximum value of SAR (interpolated) = 1.17 mW/g

Body Rear 4Tx 251/Zoom Scan (5x5x7)/Cube 0: Measurement grid: dx=8mm, dy=8mm, dz=5mm
Reference Value = 29.7 V/m; Power Drift = -0.002 dB
Peak SAR (extrapolated) = 1.33 W/kg
SAR(1 g) = 1.12 mW/g; SAR(10 g) = 0.878 mW/g
Maximum value of SAR (measured) = 1.17 mW/g



Test Laboratory: HCT CO., LTD
EUT Type: GSM/WCDMA Phone with Bluetooth3.0, WIFI802.11 b/g/n
Liquid Temperature: 20.8 °C
Ambient Temperature: 21.0 °C
Test Date: Mar . 28, 2013
Plot NO. 40

DUT: LG-E440g; Type: Bar; Serial: #1

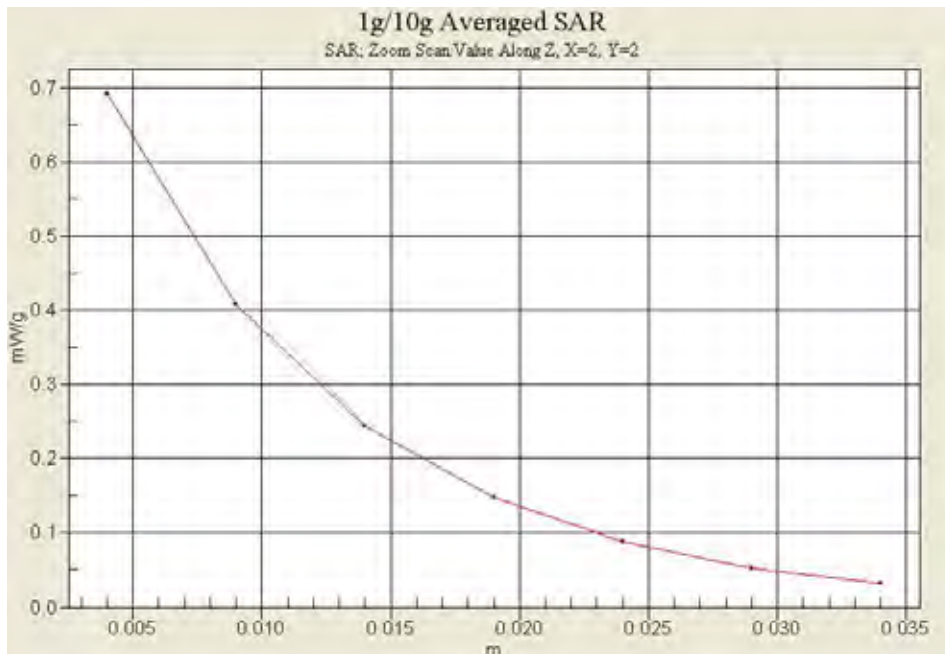
Communication System: GSM 1900; Frequency: 1880 MHz;Duty Cycle: 1:2.075
Medium parameters used: $f = 1880$ MHz; $\sigma = 1.54$ mho/m; $\epsilon_r = 52.3$; $\rho = 1000$ kg/m³
Phantom section: Center Section ; Measurement SW: DASY4, V4.7 Build 80; Postprocessing SW: SEMCAD, V1.8 Build 184

DASY4 Configuration:

- Probe: EX3DV4 - SN3863; ConvF(7.46, 7.46, 7.46); Calibrated: 2012-07-13
- Sensor-Surface: 4mm (Mechanical Surface Detection)
- Electronics: DAE4 Sn648; Calibrated: 2012-04-27
- Phantom: Triple Flat Phantom 5.1C_20120905; Type: QD 000 P51 CA

Body Bottom 661 4Tx/Area Scan (71x51x1): Measurement grid: dx=15mm, dy=15mm
Maximum value of SAR (interpolated) = 0.769 mW/g

Body Bottom 661 4Tx/Zoom Scan (5x5x7)/Cube 0: Measurement grid: dx=8mm, dy=8mm, dz=5mm
Reference Value = 21.3 V/m; Power Drift = -0.092 dB
Peak SAR (extrapolated) = 1.08 W/kg
SAR(1 g) = 0.620 mW/g; SAR(10 g) = 0.342 mW/g
Maximum value of SAR (measured) = 0.693 mW/g



Test Laboratory: HCT CO., LTD
EUT Type: GSM/WCDMA Phone with Bluetooth3.0, WIFI802.11 b/g/n
Liquid Temperature: 20.9 °C
Ambient Temperature: 21.1 °C
Test Date: Mar . 27, 2013
Plot NO. 41

DUT: LG-E440g; Type: Bar; Serial: #1

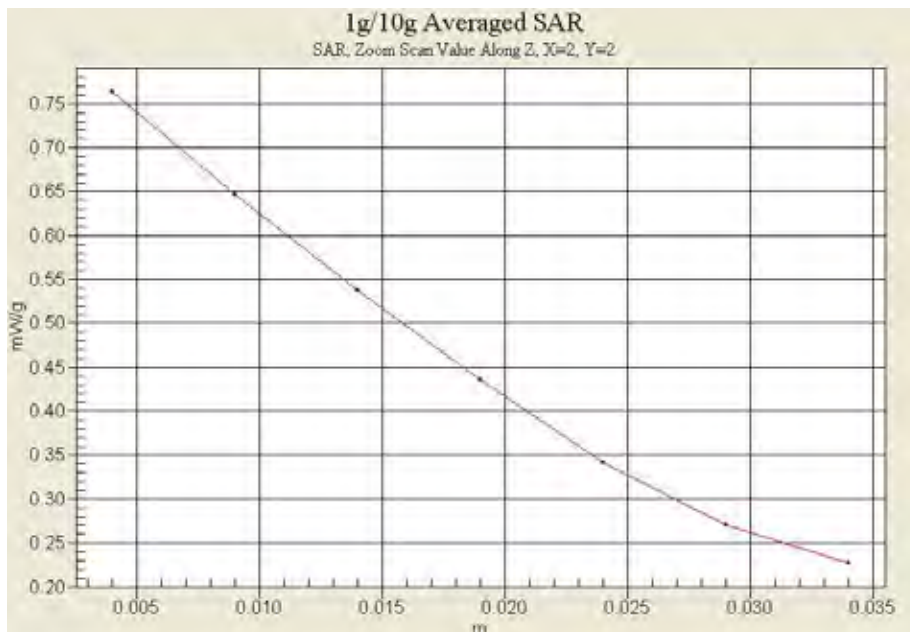
Communication System: WCDMA850; Frequency: 836.6 MHz; Duty Cycle: 1:1
Medium parameters used (interpolated): $f = 836.6$ MHz; $\sigma = 0.987$ mho/m; $\epsilon_r = 56.8$; $\rho = 1000$ kg/m³
Phantom section: Center Section ; Measurement SW: DASY4, V4.7 Build 80; Postprocessing SW: SEMCAD, V1.8 Build 184

DASY4 Configuration:

- Probe: EX3DV4 - SN3863; ConvF(9.25, 9.25, 9.25); Calibrated: 2012-07-13
- Sensor-Surface: 4mm (Mechanical Surface Detection)
- Electronics: DAE4 Sn648; Calibrated: 2012-04-27
- Phantom: Triple Flat Phantom 5.1C_20120905; Type: QD 000 P51 CA

Body Rear 4183/Area Scan (61x91x1): Measurement grid: dx=15mm, dy=15mm
Maximum value of SAR (interpolated) = 0.757 mW/g

Body Rear 4183/Zoom Scan (5x5x7)/Cube 0: Measurement grid: dx=8mm, dy=8mm, dz=5mm
Reference Value = 24.0 V/m; Power Drift = 0.037 dB
Peak SAR (extrapolated) = 0.872 W/kg
SAR(1 g) = 0.731 mW/g; SAR(10 g) = 0.577 mW/g
Maximum value of SAR (measured) = 0.764 mW/g



Test Laboratory: HCT CO., LTD
EUT Type: GSM/WCDMA Phone with Bluetooth3.0, WIFI802.11 b/g/n
Liquid Temperature: 20.8 °C
Ambient Temperature: 21.0 °C
Test Date: Mar . 28, 2013
Plot NO. 47

DUT: LG-E440g; Type: Bar; Serial: #1

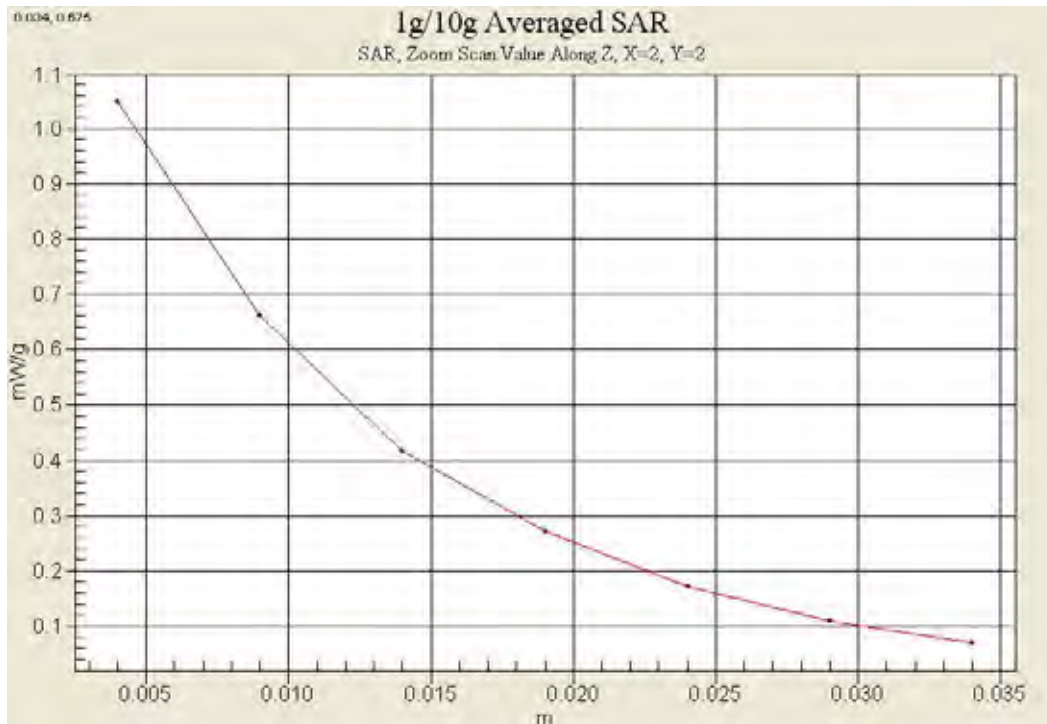
Communication System: WCDMA1900; Frequency: 1880 MHz;Duty Cycle: 1:1
Medium parameters used: $f = 1880$ MHz; $\sigma = 1.54$ mho/m; $\epsilon_r = 52.3$; $\rho = 1000$ kg/m³
Phantom section: Center Section ; Measurement SW: DASY4, V4.7 Build 80; Postprocessing SW: SEMCAD, V1.8 Build 184

DASY4 Configuration:

- Probe: EX3DV4 - SN3863; ConvF(7.46, 7.46, 7.46); Calibrated: 2012-07-13
- Sensor-Surface: 4mm (Mechanical Surface Detection)
- Electronics: DAE4 Sn648; Calibrated: 2012-04-27
- Phantom: Triple Flat Phantom 5.1C_20120905; Type: QD 000 P51 CA

Body Rear 9400/Area Scan (71x101x1): Measurement grid: dx=15mm, dy=15mm
Maximum value of SAR (interpolated) = 1.07 mW/g

Body Rear 9400/Zoom Scan (5x5x7)/Cube 0: Measurement grid: dx=8mm, dy=8mm, dz=5mm
Reference Value = 10.7 V/m; Power Drift = -0.054 dB
Peak SAR (extrapolated) = 1.51 W/kg
SAR(1 g) = 0.962 mW/g; SAR(10 g) = 0.586 mW/g
Maximum value of SAR (measured) = 1.04 mW/g



Test Laboratory: HCT CO., LTD
EUT Type: GSM/WCDMA Phone with Bluetooth3.0, WIFI802.11 b/g/n
Liquid Temperature: 20.9 °C
Ambient Temperature: 21.1 °C
Test Date: Mar . 27, 2013
Plot NO. 55

DUT: LG-E440g; Type: Bar; Serial: #1

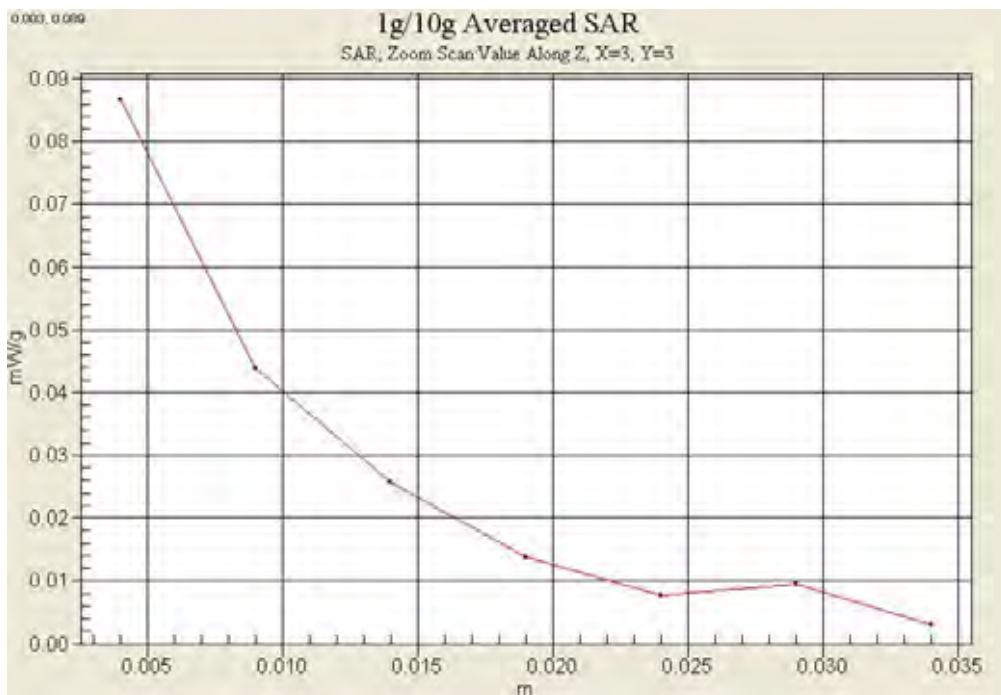
Communication System: 2450MHz FCC; Frequency: 2437 MHz;Duty Cycle: 1:1
Medium parameters used (interpolated): $f = 2437$ MHz; $\sigma = 1.97$ mho/m; $\epsilon_r = 53.6$; $\rho = 1000$ kg/m³
Phantom section: Center Section ; Measurement SW: DASY4, V4.7 Build 80; Postprocessing SW: SEMCAD, V1.8 Build 184

DASY4 Configuration:

- Probe: EX3DV4 - SN3863; ConvF(7, 7, 7); Calibrated: 2012-07-13
- Sensor-Surface: 4mm (Mechanical Surface Detection)
- Electronics: DAE4 Sn648; Calibrated: 2012-04-27
- Phantom: Triple Flat Phantom 5.1C_20120905; Type: QD 000 P51 CA

802.11b Body Rear 1Mbps 6ch/Area Scan (81x111x1): Measurement grid: dx=12mm, dy=12mm
Maximum value of SAR (interpolated) = 0.087 mW/g

802.11b Body Rear 1Mbps 6ch/Zoom Scan (7x7x7)/Cube 0: Measurement grid: dx=5mm, dy=5mm, dz=5mm
Reference Value = 5.65 V/m; Power Drift = -0.119 dB
Peak SAR (extrapolated) = 0.150 W/kg
SAR(1 g) = 0.073 mW/g; SAR(10 g) = 0.035 mW/g
Maximum value of SAR (measured) = 0.087 mW/g



Attachment 2. – Dipole Verification Plots

■ Verification Data (835 MHz Head)

Test Laboratory: HCT CO., LTD
Input Power 100 mW (20 dBm)
Liquid Temp: 21.2 °C
Test Date: Mar.25, 2013

DUT: Dipole 835 MHz; Type: D835V2; Serial: D835V2 – SN:441

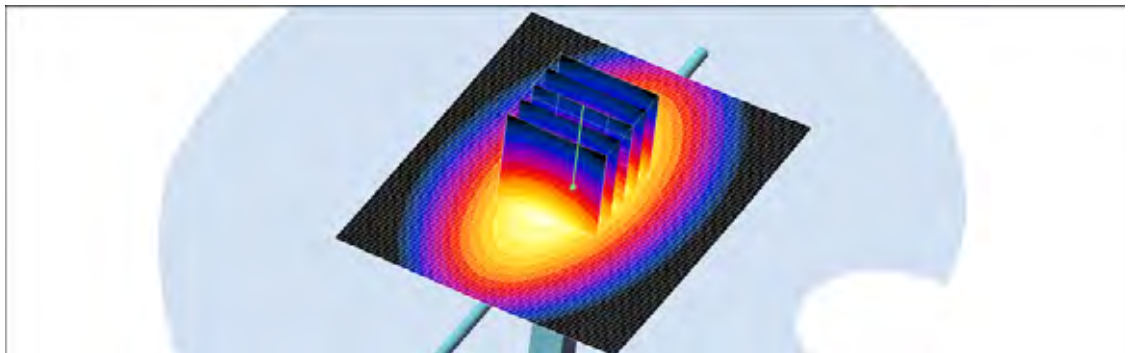
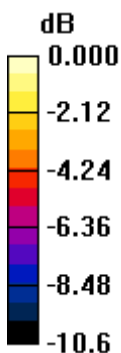
Communication System: CW; Frequency: 835 MHz; Duty Cycle: 1:1
Medium parameters used: $f = 835$ MHz; $\sigma = 0.919$ mho/m; $\epsilon_r = 40.4$; $\rho = 1000$ kg/m³
Phantom section: Flat Section ; Measurement SW: DASY4, V4.7 Build 71; Postprocessing SW: SEMCAD, V1.8 Build 184

DASY4 Configuration:

- Probe: EX3DV4 – SN3863; ConvF(9.3, 9.3, 9.3); Calibrated: 2012-07-13
- Sensor-Surface: 4mm (Mechanical Surface Detection)
- Electronics: DAE4 Sn648; Calibrated: 2012-04-27
- Phantom: SAM 1800/1900 MHz; Type: SAM

Validation 835 MHz/Area Scan (61x81x1): Measurement grid: dx=15mm, dy=15mm
Maximum value of SAR (interpolated) = 1.04 mW/g

Validation 835 MHz/Zoom Scan (5x5x7)/Cube 0: Measurement grid: dx=8mm, dy=8mm, dz=5mm
Reference Value = 33.7 V/m; Power Drift = -0.036 dB
Peak SAR (extrapolated) = 1.43 W/kg
SAR(1 g) = 0.961 mW/g; SAR(10 g) = 0.630 mW/g
Maximum value of SAR (measured) = 1.04 mW/g



0 dB = 1.04mW/g

■ Verification Data (835 MHz Body)

Test Laboratory: HCT CO., LTD
Input Power 100 mW (20 dBm)
Liquid Temp: 20.9 °C
Test Date: Mar.27, 2013

DUT: Dipole 835 MHz; Type: D835V2; Serial: D835V2 – SN:441

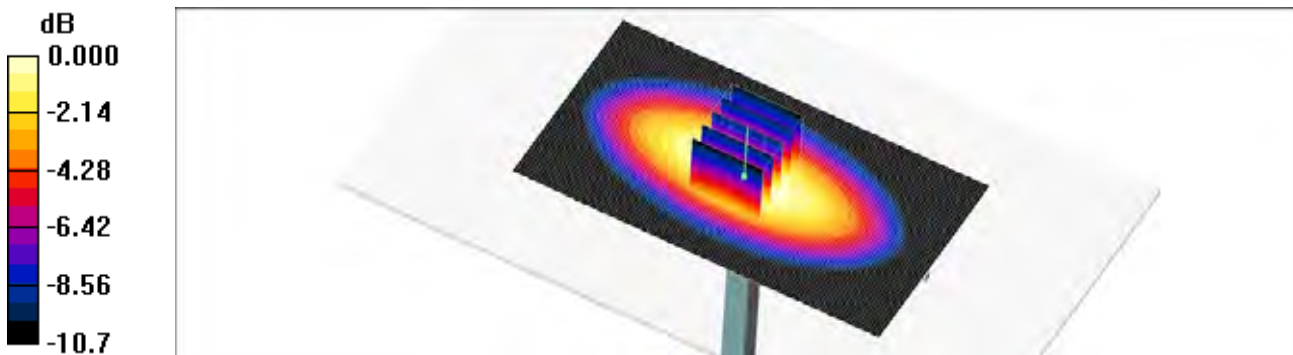
Communication System: CW; Frequency: 835 MHz; Duty Cycle: 1:1
Medium parameters used: $f = 835$ MHz; $\sigma = 0.985$ mho/m; $\epsilon_r = 56.8$; $\rho = 1000$ kg/m³
Phantom section: Center Section ; Measurement SW: DASY4, V4.7 Build 71; Postprocessing SW: SEMCAD, V1.8 Build 184

DASY4 Configuration:

- Probe: EX3DV4 – SN3863; ConvF(9.25, 9.25, 9.25); Calibrated: 2012-07-13
- Sensor-Surface: 4mm (Mechanical Surface Detection)
- Electronics: DAE4 Sn648; Calibrated: 2012-04-27
- Phantom: Triple Flat Phantom 5.1C; Type: QD 000 P51 CA

Validation 835 MHz/Area Scan (111x61x1): Measurement grid: dx=15mm, dy=15mm
Maximum value of SAR (interpolated) = 1.05 mW/g

Validation 835 MHz/Zoom Scan (5x5x7)/Cube 0: Measurement grid: dx=8mm, dy=8mm, dz=5mm
Reference Value = 32.4 V/m; Power Drift = 0.045 dB
Peak SAR (extrapolated) = 1.45 W/kg
SAR(1 g) = 0.972 mW/g; SAR(10 g) = 0.632 mW/g
Maximum value of SAR (measured) = 1.05 mW/g



0 dB = 1.05mW/g

■ Verification Data (1 900 MHz Head)

Test Laboratory: HCT CO., LTD
Input Power 100 mW (20 dBm)
Liquid Temp: 21.1 °C
Test Date: Mar.26, 2013

DUT: Dipole 1900 MHz; Type: D1900V2; Serial: D1900V2 – SN:5d032

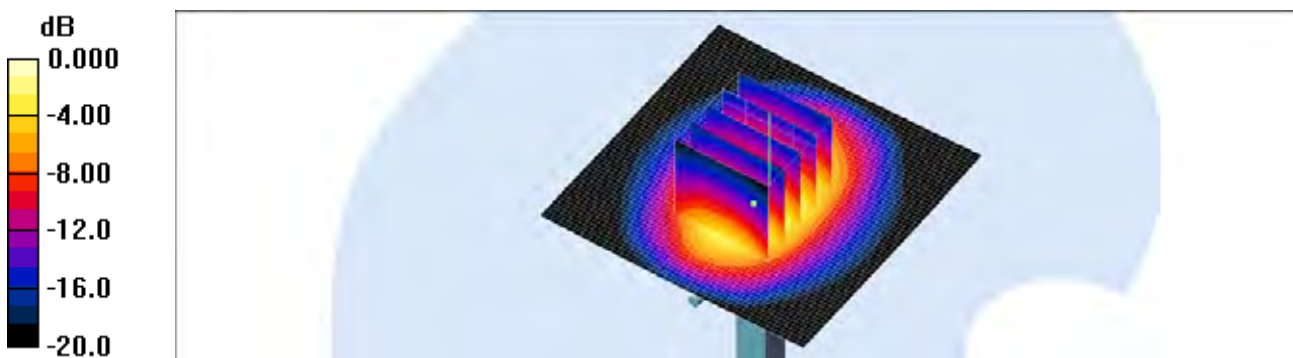
Communication System: CW; Frequency: 1900 MHz; Duty Cycle: 1:1
Medium parameters used: $f = 1900$ MHz; $\sigma = 1.37$ mho/m; $\epsilon_r = 40.9$; $\rho = 1000$ kg/m³
Phantom section: Flat Section ; Measurement SW: DASY4, V4.7 Build 71; Postprocessing SW: SEMCAD, V1.8 Build 184

DASY4 Configuration:

- Probe: EX3DV4 – SN3863; ConvF(8.22, 8.22, 8.22); Calibrated: 2012-07-13
- Sensor-Surface: 4mm (Mechanical Surface Detection)
- Electronics: DAE4 Sn648; Calibrated: 2012-04-27
- Phantom: SAM 1800/1900 MHz; Type: SAM

Dipole 1900MHz Validation/Area Scan (61x61x1): Measurement grid: dx=15mm, dy=15mm
Maximum value of SAR (interpolated) = 4.51 mW/g

Dipole 1900MHz Validation/Zoom Scan (5x5x7)/Cube 0: Measurement grid: dx=8mm, dy=8mm, dz=5mm
Reference Value = 55.8 V/m; Power Drift = -0.006 dB
Peak SAR (extrapolated) = 7.36 W/kg
SAR(1 g) = 3.81 mW/g; SAR(10 g) = 1.94 mW/g
Maximum value of SAR (measured) = 4.16 mW/g



0 dB = 4.16mW/g

■ Verification Data (1 900 MHz Body)

Test Laboratory: HCT CO., LTD
Input Power 100 mW (20 dBm)
Liquid Temp: 20.8 °C
Test Date: Mar.28, 2013

DUT: Dipole 1900 MHz; Type: D1900V2; Serial: D1900V2 – SN:5d032

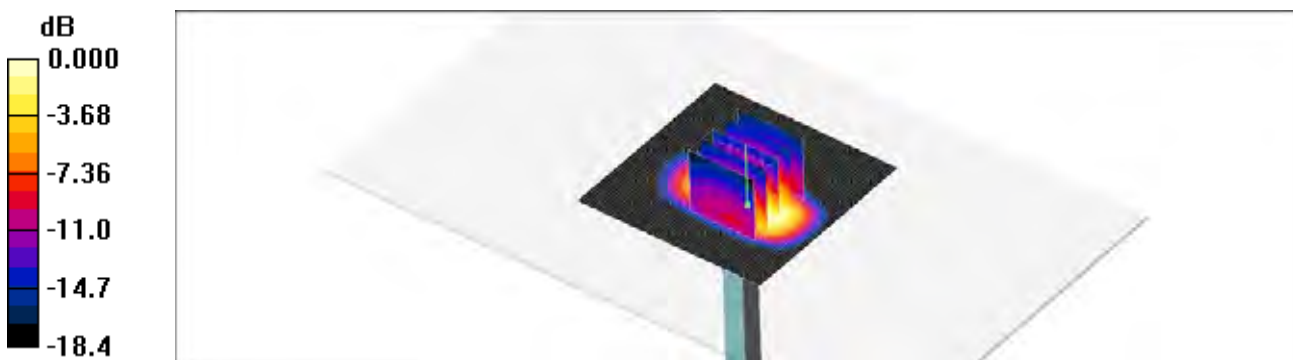
Communication System: CW; Frequency: 1900 MHz; Duty Cycle: 1:1
Medium parameters used: $f = 1900$ MHz; $\sigma = 1.56$ mho/m; $\epsilon_r = 52.2$; $\rho = 1000$ kg/m³
Phantom section: Center Section ; Measurement SW: DASY4, V4.7 Build 71; Postprocessing SW: SEMCAD, V1.8 Build 184

DASY4 Configuration:

- Probe: EX3DV4 – SN3863; ConvF(7.46, 7.46, 7.46); Calibrated: 2012-07-13
- Sensor-Surface: 4mm (Mechanical Surface Detection)
- Electronics: DAE4 Sn648; Calibrated: 2012-04-27
- Phantom: Triple Flat Phantom 5.1C; Type: QD 000 P51 CA

Validation 1900 MHz/Area Scan (61x61x1): Measurement grid: dx=15mm, dy=15mm
Maximum value of SAR (interpolated) = 6.03 mW/g

Validation 1900 MHz/Zoom Scan (5x5x7)/Cube 0: Measurement grid: dx=8mm, dy=8mm, dz=5mm
Reference Value = 40.6 V/m; Power Drift = -0.063 dB
Peak SAR (extrapolated) = 8.18 W/kg
SAR(1 g) = 4.03 mW/g; SAR(10 g) = 1.91 mW/g
Maximum value of SAR (measured) = 4.56 mW/g



■ Verification Data (2 450 MHz Head)

Test Laboratory: HCT CO., LTD
Input Power 100 mW (20 dBm)
Liquid Temp: 20.9 °C
Test Date: Mar.27, 2013

DUT: Dipole 2450 MHz; Type: D2450V2; Serial: D2450V2 – SN:743

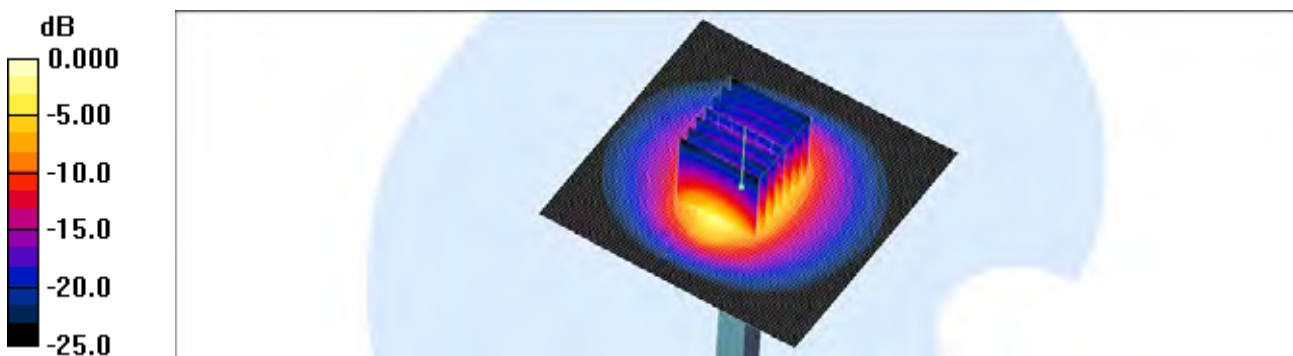
Communication System: CW; Frequency: 2450 MHz; Duty Cycle: 1:1
Medium parameters used: $f = 2450$ MHz; $\sigma = 1.83$ mho/m; $\epsilon_r = 38$; $\rho = 1000$ kg/m³
Phantom section: Flat Section ; Measurement SW: DASY4, V4.7 Build 71; Postprocessing SW: SEMCAD, V1.8 Build 184

DASY4 Configuration:

- Probe: EX3DV4 – SN3863; ConvF(7.19, 7.19, 7.19); Calibrated: 2012-07-13
- Sensor-Surface: 2mm (Mechanical Surface Detection)
- Electronics: DAE4 Sn648; Calibrated: 2012-04-27
- Phantom: 835/900 Phantom ; Type: SAM

Validation 2450MHz/Area Scan (81x81x1): Measurement grid: dx=12mm, dy=12mm
Maximum value of SAR (interpolated) = 8.30 mW/g

Validation 2450MHz/Zoom Scan (7x7x7)/Cube 0: Measurement grid: dx=5mm, dy=5mm, dz=5mm
Reference Value = 56.9 V/m; Power Drift = -0.017 dB
Peak SAR (extrapolated) = 11.6 W/kg
SAR(1 g) = 5.19 mW/g; SAR(10 g) = 2.3 mW/g
Maximum value of SAR (measured) = 8.21 mW/g



0 dB = 8.21mW/g

■ Verification Data (2 450 MHz Body)

Test Laboratory: HCT CO., LTD
Input Power 100 mW (20 dBm)
Liquid Temp: 20.9 °C
Test Date: Mar.27, 2013

DUT: Dipole 2450 MHz; Type: D2450V2; Serial: D2450V2 – SN:743

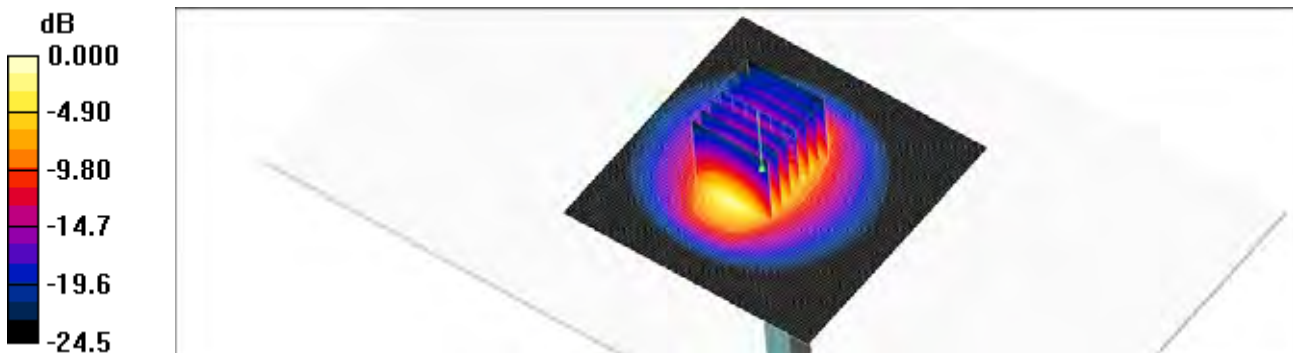
Communication System: CW; Frequency: 2450 MHz; Duty Cycle: 1:1
Medium parameters used: $f = 2450$ MHz; $\sigma = 1.99$ mho/m; $\epsilon_r = 53.5$; $\rho = 1000$ kg/m³
Phantom section: Center Section ; Measurement SW: DASY4, V4.7 Build 71; Postprocessing SW: SEMCAD, V1.8 Build 184

DASY4 Configuration:

- Probe: EX3DV4 – SN3863; ConvF(7, 7, 7); Calibrated: 2012-07-13
- Sensor-Surface: 2mm (Mechanical Surface Detection)
- Electronics: DAE4 Sn648; Calibrated: 2012-04-27
- Phantom: Triple Flat Phantom 5.1C; Type: QD 000 P51 CA

Validation 2450MHz/Area Scan (81x81x1): Measurement grid: dx=12mm, dy=12mm
Maximum value of SAR (interpolated) = 8.59 mW/g

Validation 2450MHz/Zoom Scan (7x7x7)/Cube 0: Measurement grid: dx=5mm, dy=5mm, dz=5mm
Reference Value = 48.1 V/m; Power Drift = -0.084 dB
Peak SAR (extrapolated) = 11.9 W/kg
SAR(1 g) = 5.33 mW/g; SAR(10 g) = 2.37 mW/g
Maximum value of SAR (measured) = 8.45 mW/g



0 dB = 8.45mW/g

Attachment 3. – Probe Calibration Data

**Calibration Laboratory of
Schmid & Partner
Engineering AG**
Zeughausstrasse 43, 8004 Zurich, Switzerland



S Schweizerischer Kalibrierdienst
S Service suisse d'étalonnage
S Servizio svizzero di taratura
S Swiss Calibration Service

Accredited by the Swiss Accreditation Service (SAS)
The Swiss Accreditation Service is one of the signatories to the EA
Multilateral Agreement for the recognition of calibration certificates

Accreditation No.: **SCS 108**

Client **HCT (Dymstac)**

Certificate No: **EX3-3863-Jul12**

CALIBRATION CERTIFICATE

Object: **EX3DV4 - SN:3863**

Calibration procedure(s): **QA CAL-01.v8, QA CAL-14.v3, QA CAL-23.v4, QA CAL-25.v4
Calibration procedure for dosimetric E-field probes**

Calibration date: **July 13, 2012**

This calibration certificate documents the traceability to national standards, which realize the physical units of measurements (SI).
The measurements and the uncertainties with confidence probability are given on the following pages and are part of the certificate.

All calibrations have been conducted in the closed laboratory facility: environment temperature (22 ± 3)°C and humidity < 70%

Calibration Equipment used (M&E critical for calibration)

Primary Standards	ID	Cal Date (Certificate No.)	Scheduled Calibration
Power meter E4419B	CB41293874	29-Mar-12 (No. 217-01508)	Apr-13
Power sensor E4412A	MY41498087	29-Mar-12 (No. 217-01508)	Apr-13
Reference 3 dB Attenuator	SN: S5054 (3c)	27-Mar-12 (No. 217-01531)	Apr-13
Reference 20 dB Attenuator	SN: S5086 (20b)	27-Mar-12 (No. 217-01529)	Apr-13
Reference 30 dB Attenuator	SN: S5129 (30b)	27-Mar-12 (No. 217-01532)	Apr-13
Reference Probe ES3DV2	SN: 3013	29-Dec-11 (No. ES3-3013, Dec11)	Dec-12
DAE4	SN: 660	10-Jan-12 (No. DAE4-660 Jan12)	Jan-13
Secondary Standards	ID	Check Date (in house)	Scheduled Check
RF generator HP 8648C	1S3642J01700	4-Aug-09 (in house check Apr-11)	In house check: Apr-13
Network Analyzer HP 8753E	US37390585	18-Oct-01 (in house check Oct-11)	In house check: Oct-12

Calibrated by:	Name: Jeton Kastrali	Function: Laboratory Technician	Signature:
Approved by:	Name: Katja Pökövic	Technical Manager	Signature:

Issued: July 14, 2012

This calibration certificate shall not be reproduced except in full without written approval of the laboratory.

**Calibration Laboratory of
 Schmid & Partner
 Engineering AG**
 Zeughausstrasse 43, 8004 Zurich, Switzerland



S Schweizerischer Kalibrierdienst
S Service suisse d'étalonnage
S Servizio svizzero di taratura
S Swiss Calibration Service

Accredited by the Swiss Accreditation Service (SAS)
 The Swiss Accreditation Service is one of the signatories to the EA
 Multilateral Agreement for the recognition of calibration certificates

Accreditation No.: **SCS 108**

Glossary:

TSL	tissue simulating liquid
NORM _{x,y,z}	sensitivity in free space
ConvF	sensitivity in TSL / NORM _{x,y,z}
DCP	diode compression point
CF	crest factor (1/duty_cycle) of the RF signal
A, B, C	modulation dependent linearization parameters
Polarization φ	φ rotation around probe axis
Polarization ϑ	ϑ rotation around an axis that is in the plane normal to probe axis (at measurement center), i.e., $\vartheta = 0$ is normal to probe axis

Calibration is Performed According to the Following Standards:

- IEEE Std 1528-2003, "IEEE Recommended Practice for Determining the Peak Spatial-Averaged Specific Absorption Rate (SAR) in the Human Head from Wireless Communications Devices: Measurement Techniques", December 2003
- IEC 62209-1, "Procedure to measure the Specific Absorption Rate (SAR) for hand-held devices used in close proximity to the ear (frequency range of 300 MHz to 3 GHz)", February 2005

Methods Applied and Interpretation of Parameters:

- NORM_{x,y,z}**: Assessed for E-field polarization $\vartheta = 0$ ($f \leq 900$ MHz in TEM-cell; $f > 1800$ MHz: R22 waveguide). NORM_{x,y,z} are only intermediate values, i.e., the uncertainties of NORM_{x,y,z} does not affect the E²-field uncertainty inside TSL (see below ConvF).
- NORM(f)_{x,y,z}** = NORM_{x,y,z} * frequency_response (see Frequency Response Chart). This linearization is implemented in DASY4 software versions later than 4.2. The uncertainty of the frequency response is included in the stated uncertainty of ConvF.
- DCP_{x,y,z}**: DCP are numerical linearization parameters assessed based on the data of power sweep with CW signal (no uncertainty required). DCP does not depend on frequency nor media.
- PAR**: PAR is the Peak to Average Ratio that is not calibrated but determined based on the signal characteristics
- A_{x,y,z}; B_{x,y,z}; C_{x,y,z}; VR_{x,y,z}**: A, B, C are numerical linearization parameters assessed based on the data of power sweep for specific modulation signal. The parameters do not depend on frequency nor media. VR is the maximum calibration range expressed in RMS voltage across the diode.
- ConvF and Boundary Effect Parameters**: Assessed in flat phantom using E-field (or Temperature Transfer Standard for $f \leq 800$ MHz) and inside waveguide using analytical field distributions based on power measurements for $f > 800$ MHz. The same setups are used for assessment of the parameters applied for boundary compensation (alpha, depth) of which typical uncertainty values are given. These parameters are used in DASY4 software to improve probe accuracy close to the boundary. The sensitivity in TSL corresponds to NORM_{x,y,z} * ConvF whereby the uncertainty corresponds to that given for ConvF. A frequency dependent ConvF is used in DASY version 4.4 and higher which allows extending the validity from ± 50 MHz to ± 100 MHz.
- Spherical isotropy (3D deviation from isotropy)**: in a field of low gradients realized using a flat phantom exposed by a patch antenna.
- Sensor Offset**: The sensor offset corresponds to the offset of virtual measurement center from the probe tip (on probe axis). No tolerance required.

EX3DV4 - SN:3863

July 13, 2012

Probe EX3DV4

SN:3863

Manufactured: February 2, 2012

Calibrated: July 13, 2012

Calibrated for DASY/EASY Systems

(Note: non-compatible with DASY2 system!)

EX3DV4- SN:3863

July 13, 2012

DASY/EASY - Parameters of Probe: EX3DV4 - SN:3863

Basic Calibration Parameters

	Sensor X	Sensor Y	Sensor Z	Unc (k=2)
Norm ($\mu V/(V/m)^2$) ^A	0.36	0.36	0.45	± 10.1 %
DCP (mV) ^B	103.0	100.6	98.6	

Modulation Calibration Parameters

UID	Communication System Name	PAR		A dB	B dB	C dB	VR mV	Unc ^C (k=2)
0	CW	0.00	X	0.00	0.00	1.00	138.3	±2.2 %
			Y	0.00	0.00	1.00	134.3	
			Z	0.00	0.00	1.00	115.9	

The reported uncertainty of measurement is stated as the standard uncertainty of measurement multiplied by the coverage factor k=2, which for a normal distribution corresponds to a coverage probability of approximately 95%.

^A The uncertainties of NormX,Y,Z do not affect the E²-field uncertainty inside TSL (see Pages 5 and 6).

^B Numerical linearization parameter; uncertainty not required.

^C Uncertainty is determined using the max. deviation from linear response applying rectangular distribution and is expressed for the square of the field value.

EX3DV4- SN:3863

July 13, 2012

DASY/EASY - Parameters of Probe: EX3DV4 - SN:3863

Calibration Parameter Determined in Head Tissue Simulating Media

f (MHz) ^c	Relative Permittivity ^f	Conductivity (S/m) ^f	ConvF X	ConvF Y	ConvF Z	Alpha	Depth (mm)	Unct. (k=2)
750	41.9	0.89	9.53	9.53	9.53	0.48	0.80	± 12.0 %
835	41.5	0.90	9.30	9.30	9.30	0.73	0.63	± 12.0 %
900	41.5	0.97	8.96	8.96	8.96	0.25	1.20	± 12.0 %
1750	40.1	1.37	8.46	8.46	8.46	0.10	0.50	± 12.0 %
1900	40.0	1.40	8.22	8.22	8.22	0.79	0.59	± 12.0 %
1950	40.0	1.40	7.79	7.79	7.79	0.25	1.02	± 12.0 %
2450	39.2	1.80	7.19	7.19	7.19	0.49	0.74	± 12.0 %
5200	36.0	4.66	4.96	4.96	4.96	0.40	1.80	± 13.1 %
5300	35.9	4.76	4.79	4.79	4.79	0.38	1.80	± 13.1 %
5500	35.6	4.96	4.66	4.66	4.66	0.40	1.80	± 13.1 %
5600	35.5	5.07	4.56	4.56	4.56	0.38	1.80	± 13.1 %
5800	35.3	5.27	4.61	4.61	4.61	0.40	1.80	± 13.1 %

^c Frequency validity of ± 100 MHz only applies for DASY v4.4 and higher (see Page 2), else it is restricted to ± 50 MHz. The uncertainty is the RSS of the ConvF uncertainty at calibration frequency and the uncertainty for the indicated frequency band.

^f At frequencies below 3 GHz, the validity of tissue parameters (ϵ and σ) can be relaxed to ± 10% if liquid compensation formula is applied to measured SAR values. At frequencies above 3 GHz, the validity of tissue parameters (ϵ and σ) is restricted to ± 5%. The uncertainty is the RSS of the ConvF uncertainty for indicated target tissue parameters.

EX3DV4- SN:3863

July 13, 2012

DASY/EASY - Parameters of Probe: EX3DV4 - SN:3863

Calibration Parameter Determined in Body Tissue Simulating Media

f (MHz) ^d	Relative Permittivity ^e	Conductivity (S/m) ^f	ConvF X	ConvF Y	ConvF Z	Alpha	Depth (mm)	Unct. (k=2)
750	55.5	0.96	9.35	9.35	9.35	0.28	1.11	± 12.0 %
835	55.2	0.97	9.25	9.25	9.25	0.37	0.91	± 12.0 %
1750	53.4	1.49	7.80	7.80	7.80	0.42	0.86	± 12.0 %
1900	53.3	1.52	7.46	7.46	7.46	0.24	1.19	± 12.0 %
2450	52.7	1.95	7.00	7.00	7.00	0.80	0.50	± 12.0 %
5200	49.0	5.30	4.35	4.35	4.35	0.45	1.90	± 13.1 %
5300	48.9	5.42	4.10	4.10	4.10	0.48	1.90	± 13.1 %
5500	48.6	5.65	3.91	3.91	3.91	0.50	1.90	± 13.1 %
5600	48.5	5.77	3.66	3.66	3.66	0.55	1.90	± 13.1 %
5800	48.2	5.00	3.81	3.81	3.81	0.58	1.90	± 13.1 %

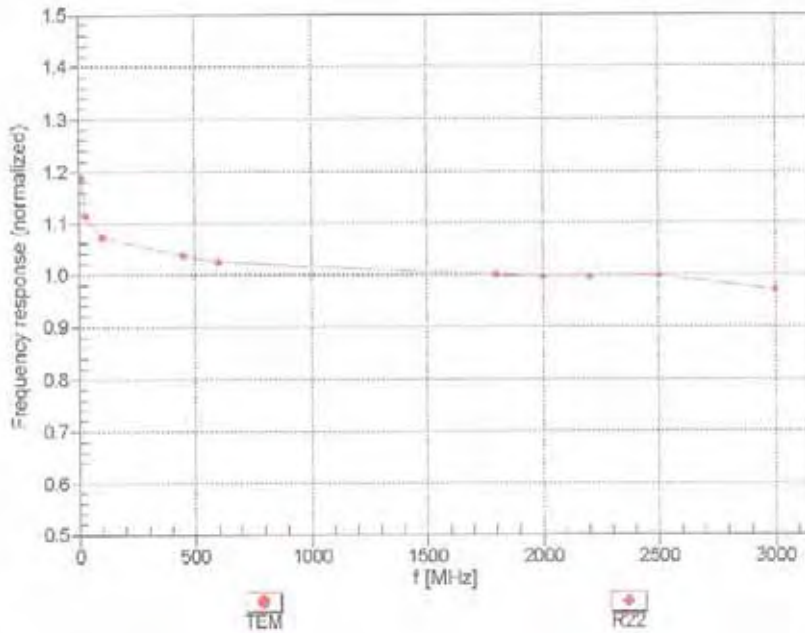
^d Frequency validity of ± 100 MHz only applies for DASY v4.4 and higher (see Page 2), else it is restricted to ± 50 MHz. The uncertainty is the RSS of the ConvF uncertainty at calibration frequency and the uncertainty for the indicated frequency band.

^e At frequencies below 3 GHz, the validity of tissue parameters (ϵ and σ) can be relaxed to ± 10% if liquid compensation formula is applied to measured SAR values. At frequencies above 3 GHz, the validity of tissue parameters (ϵ and σ) is restricted to ± 5%. The uncertainty is the RSS of the ConvF uncertainty for indicated target tissue parameters.

EX30V4- SN:3863

July 13, 2012

Frequency Response of E-Field (TEM-Cell:if1110 EXX, Waveguide: R22)

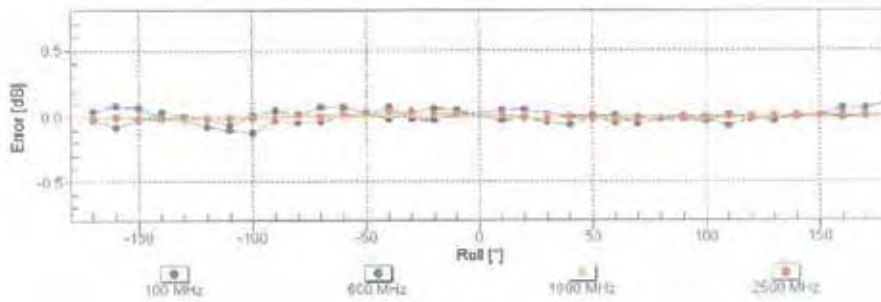
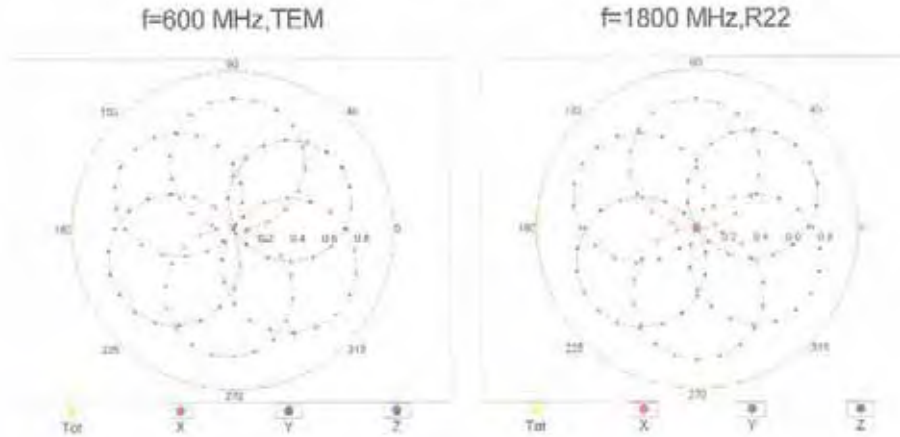


Uncertainty of Frequency Response of E-field: $\pm 6.3\%$ (k=2)

EX3DV4-SN.3883

July 13, 2012

Receiving Pattern (ϕ), $\theta = 0^\circ$

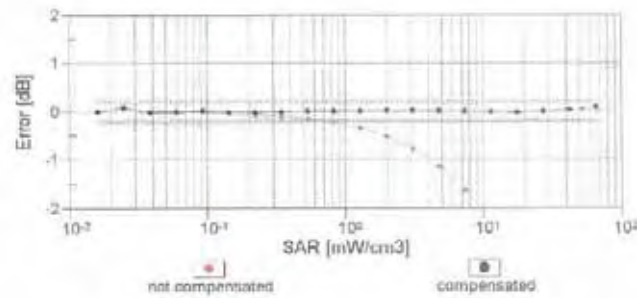
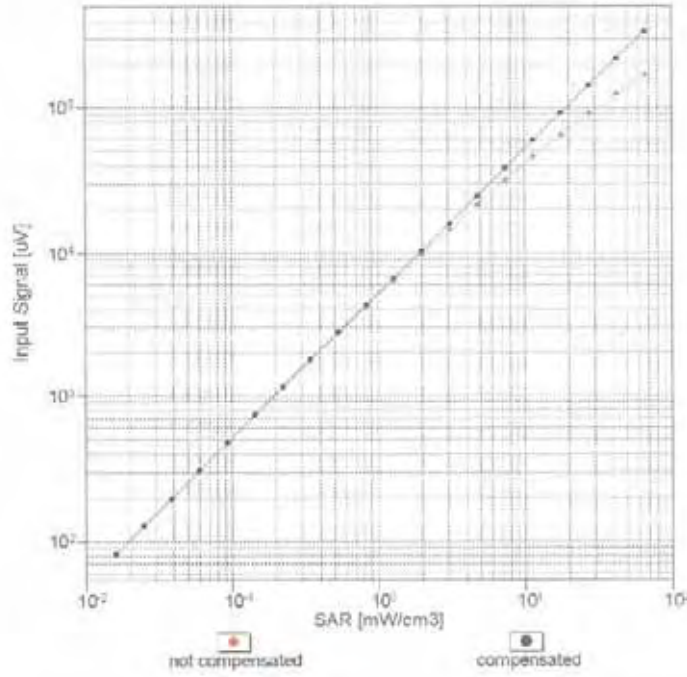


Uncertainty of Axial Isotropy Assessment: $\pm 0.5\%$ ($k=2$)

EX3DV4- SN:3963

July 13, 2012

Dynamic Range $f(SAR_{head})$
(TEM cell , $f = 900$ MHz)

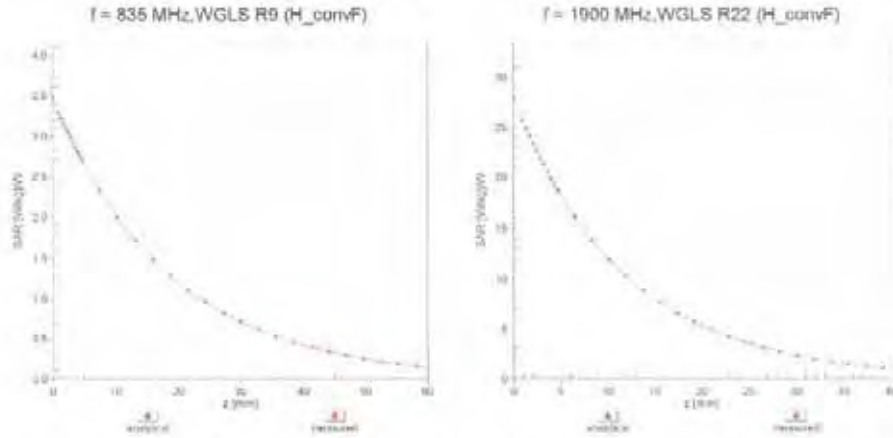


Uncertainty of Linearity Assessment: $\pm 0.6\%$ ($k=2$)

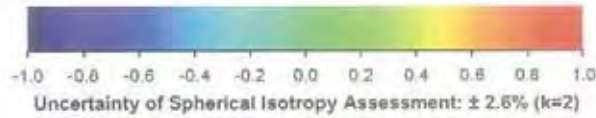
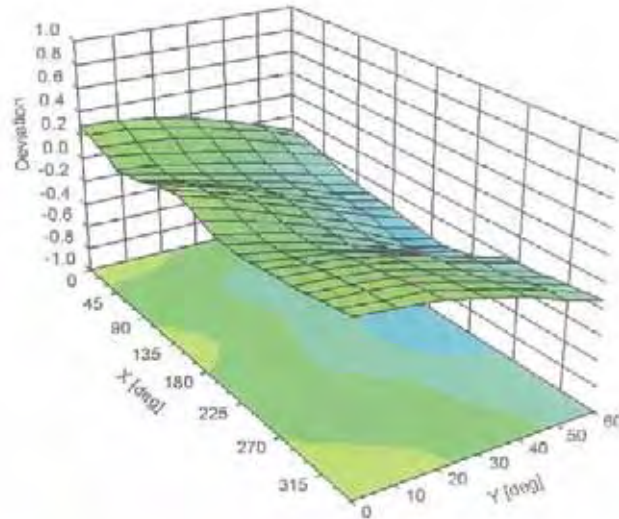
EX3DV4- SN:3863

July 13, 2012

Conversion Factor Assessment



Deviation from Isotropy in Liquid Error (ϕ, θ), f = 900 MHz



EX3DV4- SN:3863

July 13, 2012

DASY/EASY - Parameters of Probe: EX3DV4 - SN:3863**Other Probe Parameters**

Sensor Arrangement	Triangular
Connector Angle (°)	110
Mechanical Surface Detection Mode	enabled
Optical Surface Detection Mode	disabled
Probe Overall Length	337 mm
Probe Body Diameter	10 mm
Tip Length	9 mm
Tip Diameter	2.5 mm
Probe Tip to Sensor X Calibration Point	1 mm
Probe Tip to Sensor Y Calibration Point	1 mm
Probe Tip to Sensor Z Calibration Point	1 mm
Recommended Measurement Distance from Surface	2 mm

Attachment 4. – Dipole Calibration Data

**Calibration Laboratory of
Schmid & Partner
Engineering AG**
Zeughausstrasse 43, 8004 Zurich, Switzerland



S Schweizerischer Kalibrierdienst
S Service suisse d'étalonnage
S Servizio svizzero di taratura
S Swiss Calibration Service

Accredited by the Swiss Accreditation Service (SAS)
The Swiss Accreditation Service is one of the signatories to the EA
Multilateral Agreement for the recognition of calibration certificates

Accreditation No.: SCS 108

Client **HCT (Dymstec)**

Certificate No: **D835V2-441_May12**

CALIBRATION CERTIFICATE

Object: **D835V2 - SN: 441**

Calibration procedure(s): **QA CAL-05 v8
Calibration procedure for dipole validation kits above 700 MHz.**

Calibration date: **May 16, 2012**

This calibration certificate documents the traceability to national standards, which realize the physical units of measurements (SI).
The measurements and the uncertainties with confidence probability are given on the following pages and are part of this certificate.

All calibrations have been conducted in the closed laboratory facility: environment temperature (22 ± 0)°C and humidity < 70%.

Calibration Equipment used (M&TE critical for calibration)

Primary Standards	ID #	Cal Date (Certificate No.)	Scheduled Calibration
Power meter EPM-442A	GB37480704	05-Oct-11 (No. 217-01451)	Oct-12
Power sensor HP 8481A	US37292783	05-Oct-11 (No. 217-01451)	Oct-12
Reference 20 dB Attenuator	SN: 6058 (20k)	27-Mar-12 (No. 217-01530)	Apr-13
Type-N mismatch combination	SN: 5047.2 / 06327	27-Mar-12 (No. 217-01533)	Apr-13
Reference Probe ES3DV3	SN: 3205	30-Dec-11 (No. ES3-3205_Dec11)	Dec-12
DAE4	SN: 601	04-Jul-11 (No. DAE4-601_Jul11)	Jul-12
Secondary Standards	ID #	Check Date (in house)	Scheduled Check
Power sensor HP 8481A	MY41092317	18-Oct-02 (in house check Oct-11)	In house check: Oct-13
RF generator R&S SMT-06	100005	04-Aug-99 (in house check Oct-11)	In house check: Oct-13
Network Analyzer HP 8753E	US37390585 S4206	18-Oct-01 (in house check Oct-11)	In house check: Oct-12

Calibrated by: **Name: Israe El-Nasouq, Function: Laboratory Technician, Signature: [Signature]**

Approved by: **Name: Kalja Pokovic, Function: Technical Manager, Signature: [Signature]**

Issued: May 16, 2012

This calibration certificate shall not be reproduced except in full without written approval of the laboratory.

Calibration Laboratory of
Schmid & Partner
Engineering AG
Zeughausstrasse 43, 8004 Zurich, Switzerland



S Schweizerischer Kalibrierdienst
C Service suisse d'étalonnage
S Servizio svizzero di taratura
S Swiss Calibration Service

Accredited by the Swiss Accreditation Service (SAS)
The Swiss Accreditation Service is one of the signatories to the EA
Multilateral Agreement for the recognition of calibration certificates

Accreditation No.: SCS 108

Glossary:

TSL	tissue simulating liquid
ConvF	sensitivity in TSL / NORM x,y,z
N/A	not applicable or not measured

Calibration is Performed According to the Following Standards:

- IEEE Std 1528-2003, "IEEE Recommended Practice for Determining the Peak Spatial-Averaged Specific Absorption Rate (SAR) in the Human Head from Wireless Communications Devices: Measurement Techniques", December 2003
- IEC 62209-1, "Procedure to measure the Specific Absorption Rate (SAR) for hand-held devices used in close proximity to the ear (frequency range of 300 MHz to 3 GHz)", February 2005
- Federal Communications Commission Office of Engineering & Technology (FCC OET), "Evaluating Compliance with FCC Guidelines for Human Exposure to Radiofrequency Electromagnetic Fields; Additional Information for Evaluating Compliance of Mobile and Portable Devices with FCC Limits for Human Exposure to Radiofrequency Emissions", Supplement C (Edition 01-01) to Bulletin 65

Additional Documentation:

- DASY4/5 System Handbook

Methods Applied and Interpretation of Parameters:

- Measurement Conditions:** Further details are available from the Validation Report at the end of the certificate. All figures stated in the certificate are valid at the frequency indicated.
- Antenna Parameters with TSL:** The dipole is mounted with the spacer to position its feed point exactly below the center marking of the flat phantom section, with the arms oriented parallel to the body axis.
- Feed Point Impedance and Return Loss:** These parameters are measured with the dipole positioned under the liquid filled phantom. The impedance stated is transformed from the measurement at the SMA connector to the feed point. The Return Loss ensures low reflected power. No uncertainty required.
- Electrical Delay:** One-way delay between the SMA connector and the antenna feed point. No uncertainty required.
- SAR measured:** SAR measured at the stated antenna input power.
- SAR normalized:** SAR as measured, normalized to an input power of 1 W at the antenna connector.
- SAR for nominal TSL parameters:** The measured TSL parameters are used to calculate the nominal SAR result.

The reported uncertainty of measurement is stated as the standard uncertainty of measurement multiplied by the coverage factor $k=2$, which for a normal distribution corresponds to a coverage probability of approximately 95%.

Measurement Conditions

DASY system configuration, as far as not given on page 1.

DASY Version	DASY5	V52.8.1
Extrapolation	Advanced Extrapolation	
Phantom	Modular Flat Phantom	
Distance Dipole Center - TSL	15 mm	with Spacer
Zoom Scan Resolution	dx, dy, dz = 5 mm	
Frequency	835 MHz \pm 1 MHz	

Head TSL parameters

The following parameters and calculations were applied.

	Temperature	Permittivity	Conductivity
Nominal Head TSL parameters	22.0 °C	41.5	0.90 mho/m
Measured Head TSL parameters	(22.0 \pm 0.2) °C	40.6 \pm 6 %	0.89 mho/m \pm 6 %
Head TSL temperature change during test	< 0.5 °C	----	----

SAR result with Head TSL

SAR averaged over 1 cm ³ (1 g) of Head TSL	Condition	
SAR measured	250 mW input power	2.35 mW / g
SAR for nominal Head TSL parameters	normalized to 1W	9.43 mW / g \pm 17.0 % (k=2)

SAR averaged over 10 cm ³ (10 g) of Head TSL	condition	
SAR measured	250 mW input power	1.54 mW / g
SAR for nominal Head TSL parameters	normalized to 1W	6.18 mW / g \pm 16.5 % (k=2)

Body TSL parameters

The following parameters and calculations were applied.

	Temperature	Permittivity	Conductivity
Nominal Body TSL parameters	22.0 °C	55.2	0.97 mho/m
Measured Body TSL parameters	(22.0 \pm 0.2) °C	54.3 \pm 6 %	1.00 mho/m \pm 6 %
Body TSL temperature change during test	< 0.5 °C	----	----

SAR result with Body TSL

SAR averaged over 1 cm ³ (1 g) of Body TSL	Condition	
SAR measured	250 mW input power	2.44 mW / g
SAR for nominal Body TSL parameters	normalized to 1W	9.50 mW / g \pm 17.0 % (k=2)

SAR averaged over 10 cm ³ (10 g) of Body TSL	condition	
SAR measured	250 mW input power	1.60 mW / g
SAR for nominal Body TSL parameters	normalized to 1W	6.27 mW / g \pm 16.5 % (k=2)

Appendix

Antenna Parameters with Head TSL

Impedance, transformed to feed point	51.1 Ω - 5.8 j Ω
Return Loss	- 24.6 dB

Antenna Parameters with Body TSL

Impedance, transformed to feed point	47.0 Ω - 8.1 j Ω
Return Loss	- 21.0 dB

General Antenna Parameters and Design

Electrical Delay (one direction)	1.372 ns
----------------------------------	----------

After long term use with 100W radiated power, only a slight warming of the dipole near the feedpoint can be measured.

The dipole is made of standard semirigid coaxial cable. The center conductor of the feeding line is directly connected to the second arm of the dipole. The antenna is therefore short-circuited for DC-signals. On some of the dipoles, small end caps are added to the dipole arms in order to improve matching when loaded according to the position as explained in the "Measurement Conditions" paragraph. The SAR data are not affected by this change. The overall dipole length is still according to the Standard.

No excessive force must be applied to the dipole arms, because they might bend or the soldered connections near the feedpoint may be damaged.

Additional EUT Data

Manufactured by	SPEAG
Manufactured on	March 09, 2001

DASY5 Validation Report for Head TSL

Date: 16.05.2012

Test Laboratory: SPEAG, Zurich, Switzerland

DUT: Dipole 835 MHz; Type: D835V2; Serial: D835V2 - SN: 441

Communication System: CW; Frequency: 835 MHz

Medium parameters used: $f = 835$ MHz; $\sigma = 0.89$ mho/m; $\epsilon_r = 40.6$; $\rho = 1000$ kg/m³

Phantom section: Flat Section

Measurement Standard: DASY5 (IEEE/IEC/ANSI C63.19-2007)

DASY52 Configuration:

- Probe: ES3DV3 - SN3205; ConvF(6.07, 6.07, 6.07); Calibrated: 30.12.2011;
- Sensor-Surface: 3mm (Mechanical Surface Detection)
- Electronics: DAE4 Sn601; Calibrated: 04.07.2011
- Phantom: Flat Phantom 4.9L; Type: QD000P49AA; Serial: 1001
- DASY52 52.8.1(838); SEMCAD X 14.6.5(6469)

Dipole Calibration for Head Tissue/Pin=250 mW, d=15mm 2/Zoom Scan (7x7x7)/Cube 0:

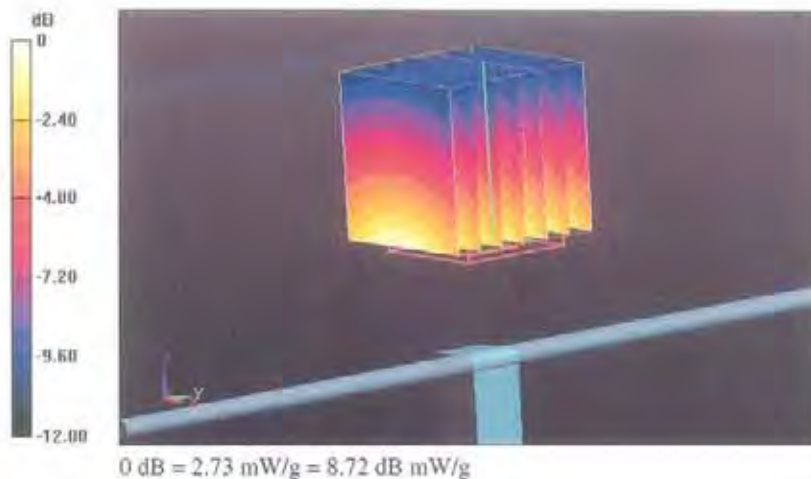
Measurement grid: dx=5mm, dy=5mm, dz=5mm

Reference Value = 57.129 V/m; Power Drift = 0.00 dB

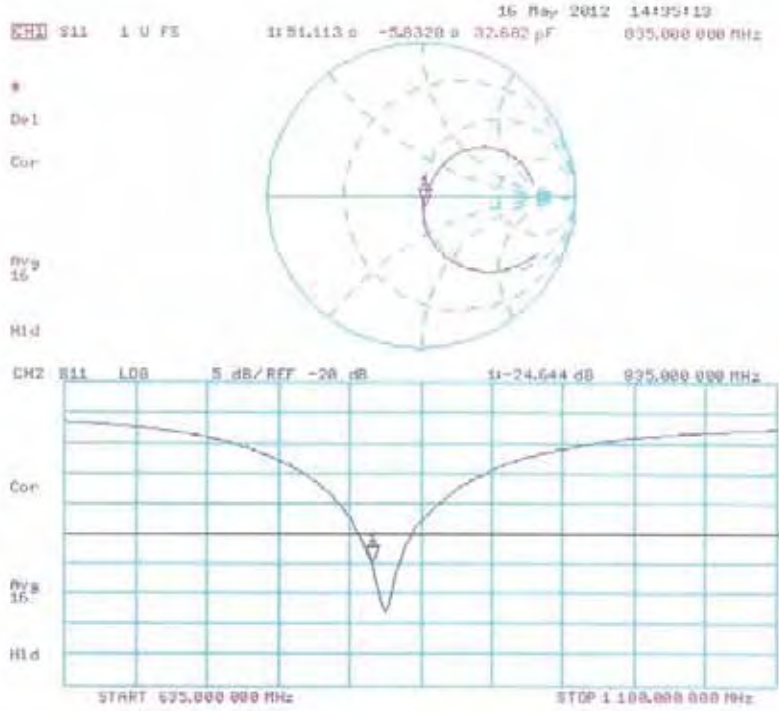
Peak SAR (extrapolated) = 3.474 mW/g

SAR(1 g) = 2.35 mW/g; SAR(10 g) = 1.54 mW/g

Maximum value of SAR (measured) = 2.73 mW/g



Impedance Measurement Plot for Head TSL



DASY5 Validation Report for Body TSL

Date: 16.05.2012

Test Laboratory: SPEAG, Zurich, Switzerland

DUT: Dipole 835 MHz; Type: D835V2; Serial: D835V2 - SN: 441

Communication System: CW; Frequency: 835 MHz

Medium parameters used: $f = 835$ MHz; $\sigma = 1$ mho/m; $\epsilon_r = 54.3$; $\rho = 1000$ kg/m³

Phantom section: Flat Section

Measurement Standard: DASY5 (IEEE/IEC/ANSI C63.19-2007)

DASY52 Configuration:

- Probe: ES3DV3 - SN3205; ConvF(6.02, 6.02, 6.02); Calibrated: 30.12.2011;
- Sensor-Surface: 3mm (Mechanical Surface Detection)
- Electronics: DAE4 Sn601; Calibrated: 04.07.2011
- Phantom; Flat Phantom 4.9L; Type: QD000P49AA; Serial: 1001
- DASY52 52.8.1(838); SEMCAD X 14.6.5(6469)

Dipole Calibration for Body Tissue/Pin=250 mW, d=15mm/Zoom Scan (7x7x7)/Cube 0:

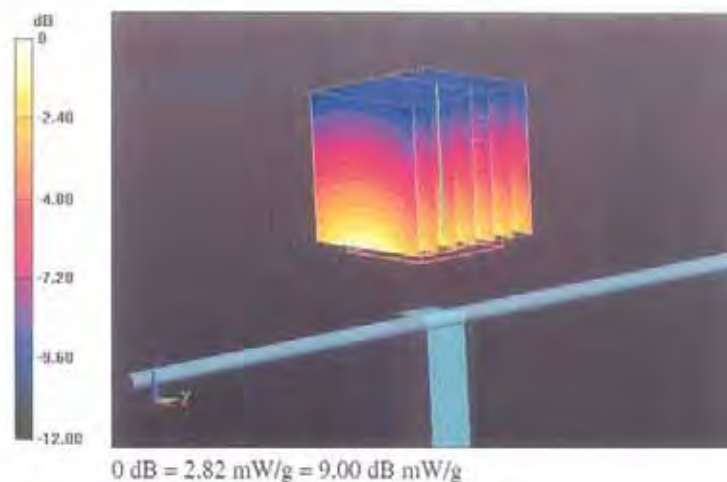
Measurement grid: dx=5mm, dy=5mm, dz=5mm

Reference Value = 55.054 V/m; Power Drift = 0.03 dB

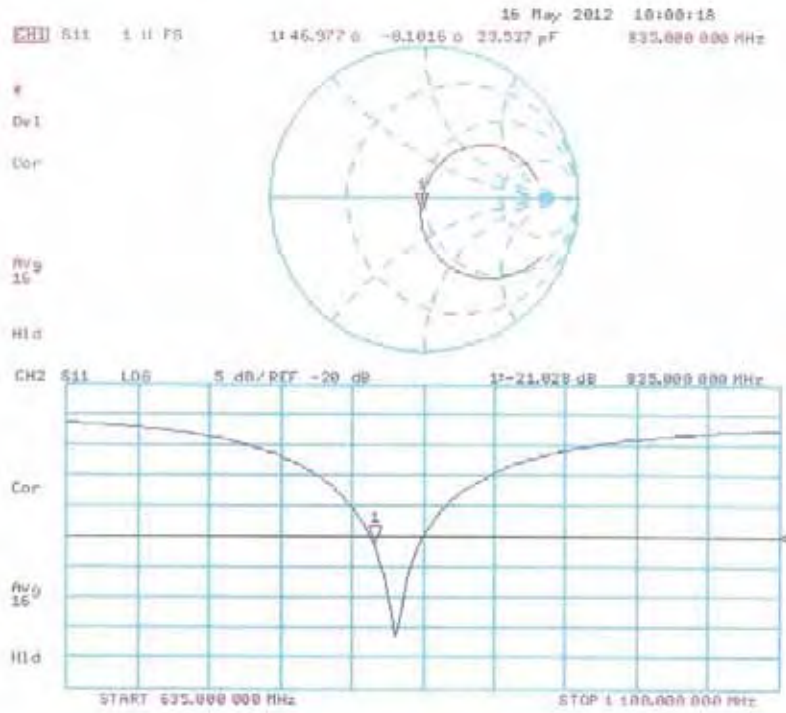
Peak SAR (extrapolated) = 3.533 mW/g

SAR(1 g) = 2.44 mW/g; SAR(10 g) = 1.6 mW/g

Maximum value of SAR (measured) = 2.82 mW/g



Impedance Measurement Plot for Body TSL



**Calibration Laboratory of
Schmid & Partner
Engineering AG**
Zeughausstrasse 43, 8004 Zurich, Switzerland



S Schweizerischer Kalibrierdienst
C Service suisse d'étalonnage
S Servizio svizzero di taratura
S Swiss Calibration Service

Accredited by the Swiss Accreditation Service (SAS)
The Swiss Accreditation Service is one of the signatories to the EA
Multilateral Agreement for the recognition of calibration certificates

Accreditation No.: SCS 108

Client **HCT (Dymstec)**

Certificate No: D1900V2-5d032_Jul12

CALIBRATION CERTIFICATE

Object: D1900V2 - SN: 5d032
Calibration procedure(s): QA CAL-05.v8
Calibration procedure for dipole validation kits above 700 MHz
Calibration date: July 20, 2012

This calibration certificate documents the traceability to national standards, which realize the physical units of measurements (SI).
The measurements and the uncertainties with confidence probability are given on the following pages and are part of the certificate.

All calibrations have been conducted in the closed laboratory facility; environment temperature (22 ± 3)°C and humidity < 70%.

Calibration Equipment used (M&TE critical for calibration)

Primary Standards	ID #	Cal Date (Certificate No.)	Scheduled Calibration
Power meter EPM-442A	GB37480704	05-Oct-11 (No. 217-01451)	Oct-12
Power sensor HP B481A	US37292783	05-Oct-11 (No. 217-01451)	Oct-12
Reference 20 dB Attenuator	SN: 5058 (20K)	27-Mar-12 (No. 217-01530)	Apr-13
Type-N mismatch combination	SN: 5047.2 / 06327	27-Mar-12 (No. 217-01533)	Apr-13
Reference Probe ES3DV3	SN: 3205	30-Dec-11 (No. ES3-3205_Dec11)	Dec-12
DAE4	SN: 601	27-Jun-12 (No. DAE4-601_Jun12)	Jun-13
Secondary Standards	ID #	Check Date (in house)	Scheduled Check
Power sensor HP B481A	MY41092317	18-Oct-02 (in house check Oct-11)	In house check: Oct-13
RF generator R&S SMT-06	100005	04-Aug-99 (in house check Oct-11)	In house check: Oct-13
Network Analyzer HP 8753E	US37390525 S4206	18-Oct-01 (in house check Oct-11)	In house check: Oct-12

Calibrated by: **Dimitri Iliev** (Name), Laboratory Technician (Function), *[Signature]* (Signature)
Approved by: **Kajli Pokovic** (Name), Technical Manager (Function), *[Signature]* (Signature)

Issued: July 20, 2012

This calibration certificate shall not be reproduced except in full without written approval of the laboratory.

Calibration Laboratory of
Schmid & Partner
Engineering AG
Zeughausstrasse 43, 8004 Zurich, Switzerland



S Schweizerischer Kalibrierdienst
C Service suisse d'étalonnage
S Servizio svizzero di taratura
S Swiss Calibration Service

Accredited by the Swiss Accreditation Service (SAS)

The Swiss Accreditation Service is one of the signatories to the EA
Multilateral Agreement for the recognition of calibration certificates

Accreditation No.: SCS 108

Glossary:

TSL tissue simulating liquid
ConvF sensitivity in TSL / NORM x,y,z
N/A not applicable or not measured

Calibration is Performed According to the Following Standards:

- IEEE Std 1528-2003, "IEEE Recommended Practice for Determining the Peak Spatial-Averaged Specific Absorption Rate (SAR) in the Human Head from Wireless Communications Devices: Measurement Techniques", December 2003
- IEC 62209-1, "Procedure to measure the Specific Absorption Rate (SAR) for hand-held devices used in close proximity to the ear (frequency range of 300 MHz to 3 GHz)", February 2005
- Federal Communications Commission Office of Engineering & Technology (FCC OET), "Evaluating Compliance with FCC Guidelines for Human Exposure to Radiofrequency Electromagnetic Fields; Additional Information for Evaluating Compliance of Mobile and Portable Devices with FCC Limits for Human Exposure to Radiofrequency Emissions", Supplement C (Edition 01-01) to Bulletin 65

Additional Documentation:

- DASY4/5 System Handbook

Methods Applied and Interpretation of Parameters:

- Measurement Conditions:** Further details are available from the Validation Report at the end of the certificate. All figures stated in the certificate are valid at the frequency indicated.
- Antenna Parameters with TSL:** The dipole is mounted with the spacer to position its feed point exactly below the center marking of the flat phantom section, with the arms oriented parallel to the body axis.
- Feed Point Impedance and Return Loss:** These parameters are measured with the dipole positioned under the liquid filled phantom. The impedance stated is transformed from the measurement at the SMA connector to the feed point. The Return Loss ensures low reflected power. No uncertainty required.
- Electrical Delay:** One-way delay between the SMA connector and the antenna feed point. No uncertainty required.
- SAR measured:** SAR measured at the stated antenna input power.
- SAR normalized:** SAR as measured, normalized to an input power of 1 W at the antenna connector.
- SAR for nominal TSL parameters:** The measured TSL parameters are used to calculate the nominal SAR result.

The reported uncertainty of measurement is stated as the standard uncertainty of measurement multiplied by the coverage factor $k=2$, which for a normal distribution corresponds to a coverage probability of approximately 95%.

Measurement Conditions

DASY system configuration, as far as not given on page 1.

DASY Version	DASY5	V52.8.1
Extrapolation	Advanced Extrapolation	
Phantom	Modular Flat Phantom	
Distance Dipole Center - TSL	10 mm	with Spacer
Zoom Scan Resolution	dx, dy, dz = 5 mm	
Frequency	1900 MHz ± 1 MHz	

Head TSL parameters

The following parameters and calculations were applied.

	Temperature	Permittivity	Conductivity
Nominal Head TSL parameters	22.0 °C	40.0	1.40 mho/m
Measured Head TSL parameters	(22.0 ± 0.2) °C	39.9 ± 6 %	1.38 mho/m ± 6 %
Head TSL temperature change during test	< 0.5 °C	---	---

SAR result with Head TSL

SAR averaged over 1 cm ³ (1 g) of Head TSL	Condition	
SAR measured	250 mW input power	9.68 mW / g
SAR for nominal Head TSL parameters	normalized to 1W	39.0 mW / g ± 17.0 % (k=2)

SAR averaged over 10 cm ³ (10 g) of Head TSL	condition	
SAR measured	250 mW input power	5.11 mW / g
SAR for nominal Head TSL parameters	normalized to 1W	20.5 mW / g ± 16.5 % (k=2)

Body TSL parameters

The following parameters and calculations were applied.

	Temperature	Permittivity	Conductivity
Nominal Body TSL parameters	22.0 °C	53.3	1.52 mho/m
Measured Body TSL parameters	(22.0 ± 0.2) °C	52.6 ± 6 %	1.52 mho/m ± 6 %
Body TSL temperature change during test	< 0.5 °C	---	---

SAR result with Body TSL

SAR averaged over 1 cm ³ (1 g) of Body TSL	Condition	
SAR measured	250 mW input power	10.0 mW / g
SAR for nominal Body TSL parameters	normalized to 1W	39.9 mW / g ± 17.0 % (k=2)

SAR averaged over 10 cm ³ (10 g) of Body TSL	condition	
SAR measured	250 mW input power	5.30 mW / g
SAR for nominal Body TSL parameters	normalized to 1W	21.2 mW / g ± 16.5 % (k=2)

Appendix**Antenna Parameters with Head TSL**

Impedance, transformed to feed point	50.0 Ω + 3.1 j Ω
Return Loss	- 30,1 dB

Antenna Parameters with Body TSL

Impedance, transformed to feed point	46.2 Ω + 3.7 j Ω
Return Loss	- 25.2 dB

General Antenna Parameters and Design

Electrical Delay (one direction)	1.194 ns
----------------------------------	----------

After long term use with 100W radiated power, only a slight warming of the dipole near the feedpoint can be measured.

The dipole is made of standard semirigid coaxial cable. The center conductor of the feeding line is directly connected to the second arm of the dipole. The antenna is therefore short-circuited for DC-signals. On some of the dipoles, small end caps are added to the dipole arms in order to improve matching when loaded according to the position as explained in the "Measurement Conditions" paragraph. The SAR data are not affected by this change. The overall dipole length is still according to the Standard.

No excessive force must be applied to the dipole arms, because they might bend or the soldered connections near the feedpoint may be damaged.

Additional EUT Data

Manufactured by	SPEAG
Manufactured on	March 17, 2003

DASY5 Validation Report for Head TSL

Date: 20.07.2012

Test Laboratory: SPEAG, Zurich, Switzerland

DUT: Dipole 1900 MHz; Type: D1900V2; Serial: D1900V2 - SN: 5d032

Communication System: CW; Frequency: 1900 MHz

Medium parameters used: $f = 1900$ MHz; $\sigma = 1.38$ mho/m; $\epsilon_r = 39.9$; $\rho = 1000$ kg/m³

Phantom section: Flat Section

Measurement Standard: DASY5 (IEEE/IEC/ANSI C63.19-2007)

DASY52 Configuration:

- Probe: ES3DV3 - SN3205; ConvF(5.01, 5.01, 5.01); Calibrated: 30.12.2011;
- Sensor-Surface: 3mm (Mechanical Surface Detection)
- Electronics: DAE4 Sn601; Calibrated: 27.06.2012
- Phantom: Flat Phantom 5.0 (front); Type: QD000P50AA; Serial: 1001
- DASY52 52.8.1(838); SEMCAD X 14.6.5(6469)

Dipole Calibration for Head Tissue/Pin=250 mW, d=10mm/Zoom Scan (7x7x7)/Cube 0:

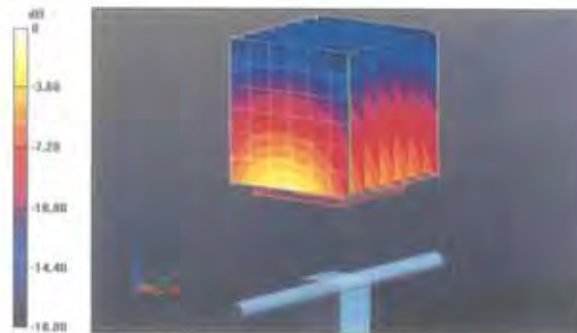
Measurement grid: dx=5mm, dy=5mm, dz=5mm

Reference Value = 96.864 V/m; Power Drift = 0.03 dB

Peak SAR (extrapolated) = 17.209 mW/g

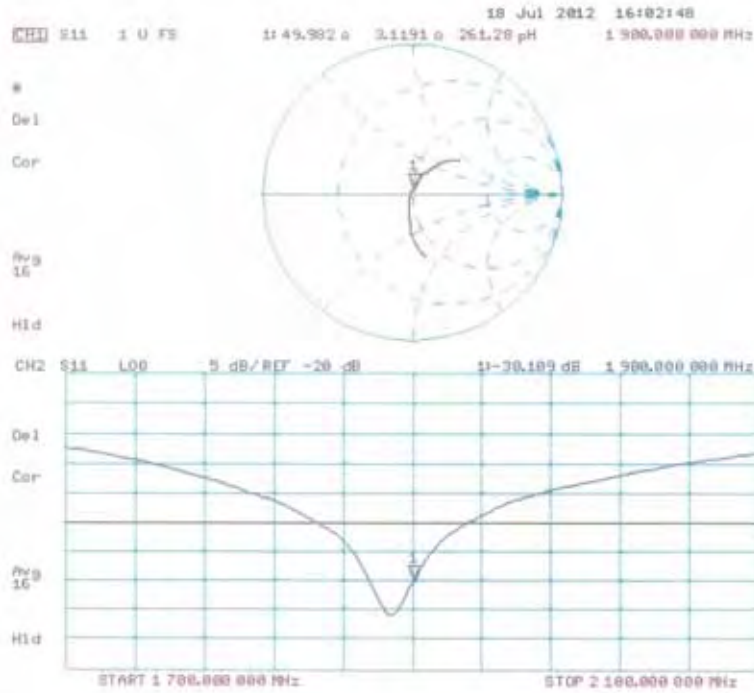
SAR(1 g) = 9.68 mW/g; SAR(10 g) = 5.11 mW/g

Maximum value of SAR (measured) = 12.1 mW/g



0 dB = 12.1 mW/g = 21.66 dB mW/g

Impedance Measurement Plot for Head TSL



DASY5 Validation Report for Body TSL

Date: 20.07.2012

Test Laboratory: SPEAG, Zurich, Switzerland

DUT: Dipole 1900 MHz; Type: D1900V2; Serial: D1900V2 - SN: 5d032

Communication System: CW; Frequency: 1900 MHz

Medium parameters used: $f = 1900$ MHz; $\sigma = 1.52$ mho/m; $\epsilon_r = 52.6$; $\rho = 1000$ kg/m³

Phantom section: Flat Section

Measurement Standard: DASY5 (IEEE/IEC/ANSI C63.19-2007)

DASY52 Configuration:

- Probe: ES3DV3 - SN3205; ConvF(4.62, 4.62, 4.62); Calibrated: 30.12.2011;
- Sensor-Surface: 3mm (Mechanical Surface Detection)
- Electronics: DAE4 Sn601; Calibrated: 27.06.2012
- Phantom: Flat Phantom 5.0 (back); Type: QD000P50AA; Serial: 1002
- DASY52 52.8.1(838); SEMCAD X 14.6.5(6469)

Dipole Calibration for Body Tissue/Pin=250 mW, d=10mm/Zoom Scan (7x7x7)/Cube 0:

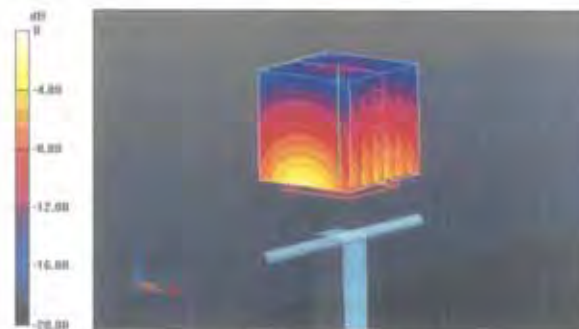
Measurement grid: dx=5mm, dy=5mm, dz=5mm

Reference Value = 95.470 V/m; Power Drift = -0.00 dB

Peak SAR (extrapolated) = 17.332 mW/g

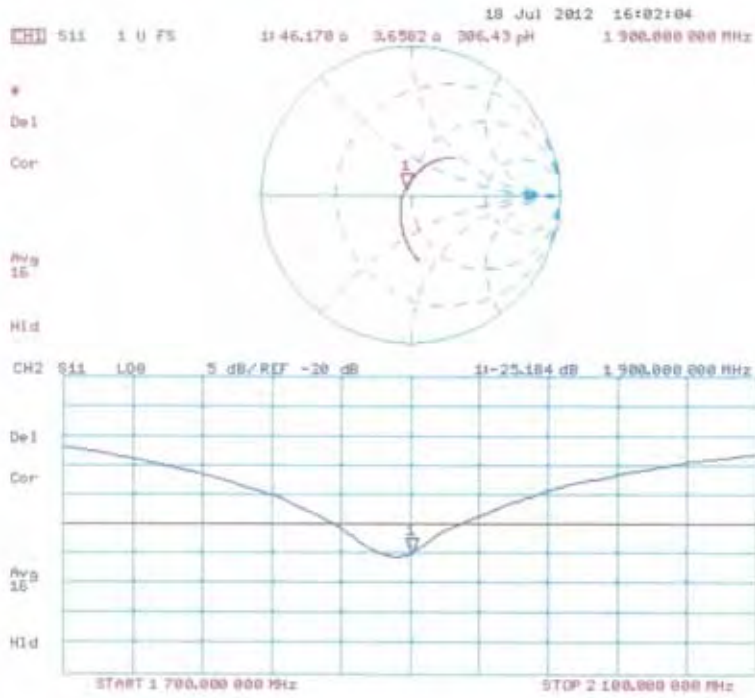
SAR(1 g) = 10 mW/g; SAR(10 g) = 5.3 mW/g

Maximum value of SAR (measured) = 12.6 mW/g



0 dB = 12.6 mW/g = 22.01 dB mW/g

Impedance Measurement Plot for Body TSL



**Calibration Laboratory of
 Schmid & Partner
 Engineering AG**
 Zeughausstrasse 49, 8004 Zurich, Switzerland



S Schweizerischer Kalibrierdienst
S Service suisse d'étalonnage
C Servizio svizzero di taratura
S Swiss Calibration Service

Accredited by the Swiss Accreditation Service (SAS)
 The Swiss Accreditation Service is one of the signatories to the EA
 Multilateral Agreement for the recognition of calibration certificates

Accreditation No.: SCS 108

Client HCT (Dymstec)

Certificate No: D2450V2-743_Aug12

CALIBRATION CERTIFICATE

Object: D2450V2 - SN: 743
 Calibration procedure(s): QA CAL-05.v8
 Calibration procedure for dipole validation kits above 700 MHz
 Calibration date: August 23, 2012

This calibration certificate documents the traceability to national standards, which realize the physical units of measurements (SI).
 The measurements and the uncertainties with confidence probability are given on the following pages and are part of the certificate.

All calibrations have been conducted in the closed laboratory facility: environment temperature (22 ± 3)°C and humidity = 70%.

Calibration Equipment used (M&E critical for calibration)

Primary Standards	ID #	Cal Date (Certificate No.)	Scheduled Calibration
Power meter EPM-442A	GB37480704	05-Oct-11 (No. 217-01451)	Oct-12
Power sensor HP 8481A	US37292793	05-Oct-11 (No. 217-01451)	Oct-12
Reference 20 dB Attenuator	SN: 5058 (20K)	27-Mar-12 (No. 217-01500)	Apr-13
Type-N mismatch combination	SN: 5047.2 / 06327	27-Mar-12 (No. 217-01533)	Apr-13
Reference Probe ES0DV3	SN: 3205	30-Dec-11 (No. ES3-3205_Dec11)	Dec-13
DAE4	SN: 601	27-Jun-12 (No. DAE4-601_Jun12)	Jun-13
Secondary Standards	ID #	Check Date (in house)	Scheduled Check
Power sensor HP 8481A	MY41092317	18-Oct-02 (in house check Oct-11)	In house check: Oct-12
RF generator RAS.5MT.06	100005	04-Aug-99 (in house check Oct-11)	In house check: Oct-13
Network Analyzer HP 8753E	US37390585 S4206	18-Oct-01 (in house check Oct-11)	In house check: Oct-12

Calibrated by: Name: Israa El-Nadoug, Function: Laboratory Technician
 Approved by: Katja Pokovic, Technical Manager

Signature:

Issued: August 23, 2012

This calibration certificate shall not be reproduced except in full without written approval of the laboratory.

Calibration Laboratory of
Schmid & Partner
Engineering AG
Zeughausstrasse 43, 8004 Zurich, Switzerland



S Schweizerischer Kalibrierdienst
C Service suisse d'étalonnage
S Servizio svizzero di taratura
S Swiss Calibration Service

Accredited by the Swiss Accreditation Service (SAS)

The Swiss Accreditation Service is one of the signatories to the EA
Multilateral Agreement for the recognition of calibration certificates

Accreditation No.: SCS 108

Glossary:

TSL	tissue simulating liquid
ConvF	sensitivity in TSL / NORM x,y,z
N/A	not applicable or not measured

Calibration is Performed According to the Following Standards:

- IEEE Std 1528-2003, "IEEE Recommended Practice for Determining the Peak Spatial-Averaged Specific Absorption Rate (SAR) in the Human Head from Wireless Communications Devices: Measurement Techniques", December 2003
- IEC 62209-1, "Procedure to measure the Specific Absorption Rate (SAR) for hand-held devices used in close proximity to the ear (frequency range of 300 MHz to 3 GHz)", February 2005
- Federal Communications Commission Office of Engineering & Technology (FCC OET), "Evaluating Compliance with FCC Guidelines for Human Exposure to Radiofrequency Electromagnetic Fields; Additional Information for Evaluating Compliance of Mobile and Portable Devices with FCC Limits for Human Exposure to Radiofrequency Emissions", Supplement C (Edition 01-01) to Bulletin 65

Additional Documentation:

- DASY4/5 System Handbook

Methods Applied and Interpretation of Parameters:

- Measurement Conditions:** Further details are available from the Validation Report at the end of the certificate. All figures stated in the certificate are valid at the frequency indicated.
- Antenna Parameters with TSL:** The dipole is mounted with the spacer to position its feed point exactly below the center marking of the flat phantom section, with the arms oriented parallel to the body axis.
- Feed Point Impedance and Return Loss:** These parameters are measured with the dipole positioned under the liquid filled phantom. The impedance stated is transformed from the measurement at the SMA connector to the feed point. The Return Loss ensures low reflected power. No uncertainty required.
- Electrical Delay:** One-way delay between the SMA connector and the antenna feed point. No uncertainty required.
- SAR measured:** SAR measured at the stated antenna input power.
- SAR normalized:** SAR as measured, normalized to an input power of 1 W at the antenna connector.
- SAR for nominal TSL parameters:** The measured TSL parameters are used to calculate the nominal SAR result.

The reported uncertainty of measurement is stated as the standard uncertainty of measurement multiplied by the coverage factor $k=2$, which for a normal distribution corresponds to a coverage probability of approximately 95%.

Measurement Conditions

DASY system configuration, as far as not given on page 1.

DASY Version	DASY5	V52.8.2
Extrapolation	Advanced Extrapolation	
Phantom	Modular Flat Phantom	
Distance Dipole Center - TSL	10 mm	with Spacer
Zoom Scan Resolution	dx, dy, dz = 5 mm	
Frequency	2450 MHz ± 1 MHz	

Head TSL parameters

The following parameters and calculations were applied.

	Temperature	Permittivity	Conductivity
Nominal Head TSL parameters	22.0 °C	39.2	1.80 mho/m
Measured Head TSL parameters	(22.0 ± 0.2) °C	39.2 ± 6 %	1.81 mho/m ± 6 %
Head TSL temperature change during test	< 0.5 °C	---	---

SAR result with Head TSL

SAR averaged over 1 cm ³ (1 g) of Head TSL	Condition	
SAR measured	250 mW input power	13.2 mW / g
SAR for nominal Head TSL parameters	normalized to 1W	52.7 mW / g ± 17.0 % (k=2)

SAR averaged over 10 cm ³ (10 g) of Head TSL	condition	
SAR measured	250 mW input power	6.18 mW / g
SAR for nominal Head TSL parameters	normalized to 1W	24.7 mW / g ± 16.5 % (k=2)

Body TSL parameters

The following parameters and calculations were applied.

	Temperature	Permittivity	Conductivity
Nominal Body TSL parameters	22.0 °C	52.7	1.95 mho/m
Measured Body TSL parameters	(22.0 ± 0.2) °C	51.3 ± 6 %	1.99 mho/m ± 6 %
Body TSL temperature change during test	< 0.5 °C	---	---

SAR result with Body TSL

SAR averaged over 1 cm ³ (1 g) of Body TSL	Condition	
SAR measured	250 mW input power	13.0 mW / g
SAR for nominal Body TSL parameters	normalized to 1W	51.2 mW / g ± 17.0 % (k=2)

SAR averaged over 10 cm ³ (10 g) of Body TSL	condition	
SAR measured	250 mW input power	6.10 mW / g
SAR for nominal Body TSL parameters	normalized to 1W	24.2 mW / g ± 16.5 % (k=2)

Appendix**Antenna Parameters with Head TSL**

Impedance, transformed to feed point	54.0 Ω + 4.7 j Ω
Return Loss	- 24.6 dB

Antenna Parameters with Body TSL

Impedance, transformed to feed point	50.9 Ω + 6.5 j Ω
Return Loss	- 23.7 dB

General Antenna Parameters and Design

Electrical Delay (one direction)	1.158 ns
----------------------------------	----------

After long term use with 100W radiated power, only a slight warming of the dipole near the feedpoint can be measured.

The dipole is made of standard semirigid coaxial cable. The center conductor of the feeding line is directly connected to the second arm of the dipole. The antenna is therefore short-circuited for DC-signals. On some of the dipoles, small end caps are added to the dipole arms in order to improve matching when loaded according to the position as explained in the "Measurement Conditions" paragraph. The SAR data are not affected by this change. The overall dipole length is still according to the Standard.

No excessive force must be applied to the dipole arms, because they might bend or the soldered connections near the feedpoint may be damaged.

Additional EUT Data

Manufactured by	SPEAG
Manufactured on	December 01, 2003

DASY5 Validation Report for Head TSL

Date: 23.08.2012

Test Laboratory: SPEAG, Zurich, Switzerland

DUT: Dipole 2450 MHz; Type: D2450V2; Serial: D2450V2 - SN: 743

Communication System: CW; Frequency: 2450 MHz

Medium parameters used: $f = 2450$ MHz; $\sigma = 1.81$ mho/m; $\epsilon_r = 39.2$; $\rho = 1000$ kg/m³

Phantom section: Flat Section

Measurement Standard: DASY5 (IEEE/IEC/ANSI C63.19-2007)

DASY52 Configuration:

- Probe: ES3DV3 - SN3205; ConvF(4.45, 4.45, 4.45); Calibrated: 30.12.2011;
- Sensor-Surface: 3mm (Mechanical Surface Detection)
- Electronics: DAE4 Sn601; Calibrated: 27.06.2012
- Phantom: Flat Phantom 5.0 (front); Type: QD000P50AA; Serial: 1001
- DASY52 52.8.2(969); SEMCAD X 14.6.6(6824)

Dipole Calibration for Head Tissue/Pin=250 mW, d=10mm/Zoom Scan (7x7x7)/Cube 0:

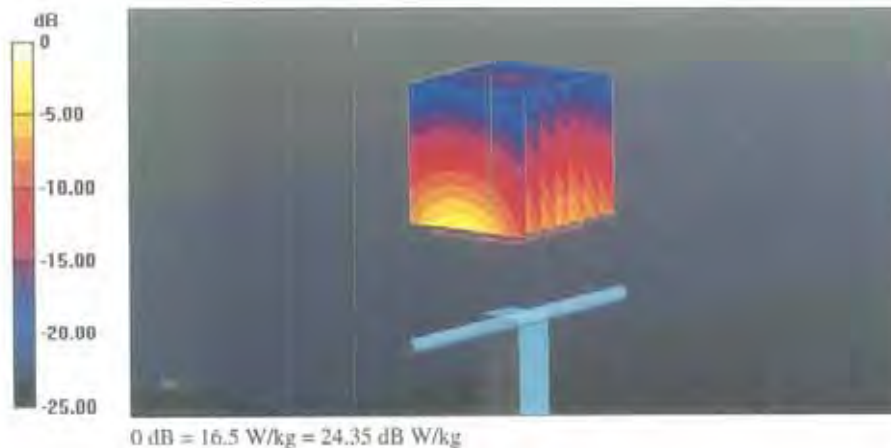
Measurement grid: dx=5mm, dy=5mm, dz=5mm

Reference Value = 98.554 V/m; Power Drift = 0.01 dB

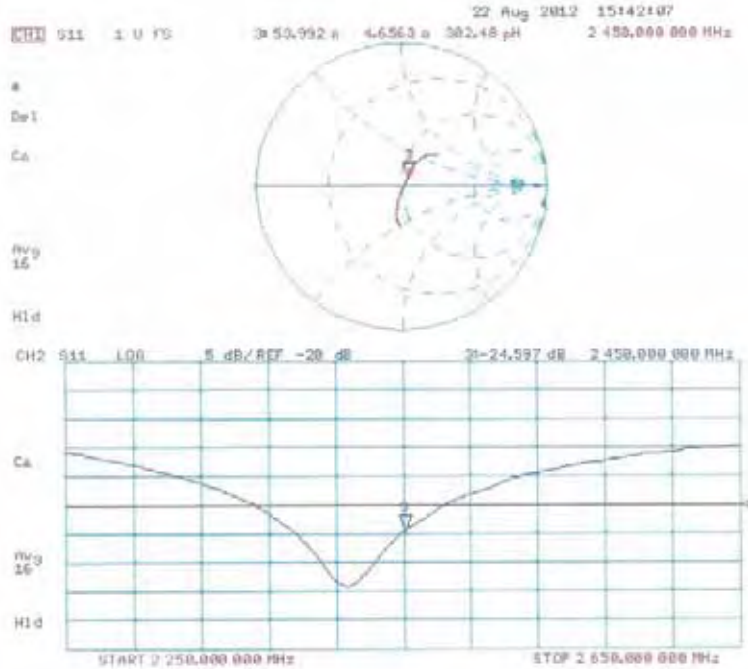
Peak SAR (extrapolated) = 26.584 mW/g

SAR(1 g) = 13.2 mW/g; SAR(10 g) = 6.18 mW/g

Maximum value of SAR (measured) = 16.5 W/kg



Impedance Measurement Plot for Head TSL



DASY5 Validation Report for Body TSL

Date: 22.08.2012

Test Laboratory: SPEAG, Zürich, Switzerland

DUT: Dipole 2450 MHz; Type: D2450V2; Serial: D2450V2 - SN: 743

Communication System: CW; Frequency: 2450 MHz

Medium parameters used: $f = 2450$ MHz; $\sigma = 1.99$ mho/m; $\epsilon_r = 51.3$; $\rho = 1000$ kg/m³

Phantom section: Flat Section

Measurement Standard: DASY5 (IEEE/IEC/ANSI C63.19-2007)

DASY52 Configuration:

- Probe: ES3DV3 - SN3205; ConvF(4.26, 4.26, 4.26); Calibrated: 30.12.2011;
- Sensor-Surface: 3mm (Mechanical Surface Detection)
- Electronics: DAE4 Sn601; Calibrated: 27.06.2012
- Phantom: Flat Phantom 5.0 (back); Type: QD000P50AA; Serial: 1002
- DASY52 52.8.2(969); SEMCAD X 14.6.6(6824)

Dipole Calibration for Body Tissue/Pin=250 mW, d=10mm/Zoom Scan (7x7x7)/Cube 0:

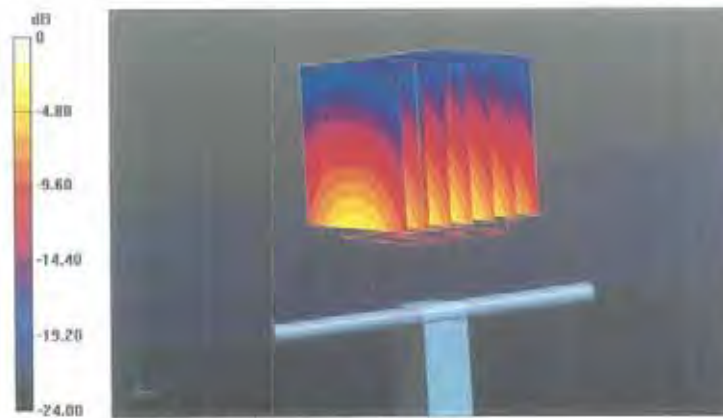
Measurement grid: dx=5mm, dy=5mm, dz=5mm

Reference Value = 95.699 V/m; Power Drift = 0.01 dB

Peak SAR (extrapolated) = 26.489 mW/g

SAR(1 g) = 13 mW/g; SAR(10 g) = 6.1 mW/g

Maximum value of SAR (measured) = 16.9 W/kg



0 dB = 16.9 W/kg = 24.56 dB W/kg

Impedance Measurement Plot for Body TSL

