

Dipole Validation Plots

DIGITAL EMC CO., LTD

DUT: Dipole 835 MHz; Type: D835V2; Serial: D835V2 - SN:464

Communication System: CW; Frequency: 835 MHz; Duty Cycle: 1:1

Medium parameters used: $f = 835$ MHz; $\sigma = 0.875$ mho/m; $\epsilon_r = 41.5$; $\rho = 1000$ kg/m³

Phantom section: Flat Section

DASY4 Configuration:

Probe: EX3DV4 - SN3643; ConvF(8.94, 8.94, 8.94); Calibrated: 2012-01-27; Electronics: DAE3 Sn519

Phantom: SAM with 835MHz; Type: SAM; Serial: TP-1223

Measurement SW: DASY4, V4.7 Build 80; Postprocessing SW: SEMCAD, V1.8 Build 186

Test Date: 2012-12-24; Ambient Temp: 21.2; Tissue Temp: 21.5

Dipole Validation

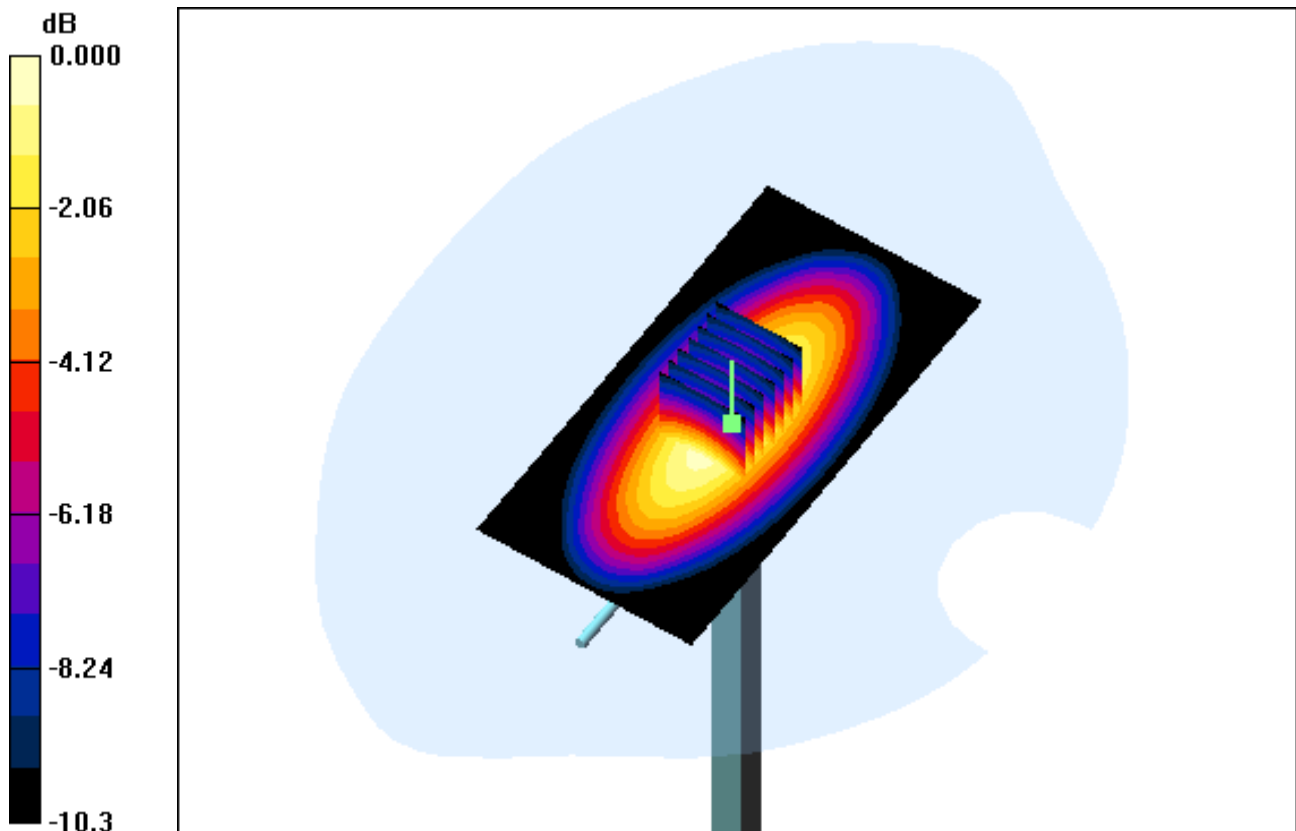
Area Scan (51x101x1): Measurement grid: dx=15mm, dy=15mm

Zoom Scan (7x7x7)/Cube 0: Measurement grid: dx=5mm, dy=5mm, dz=5mm

Power Drift = 0.032 dB

Peak SAR (extrapolated) = 3.48 W/kg

SAR(1 g) = 2.31 W/kg; SAR(10 g) = 1.52 W/kg



0 dB = 2.82mW/g

DIGITAL EMC CO., LTD

DUT: Dipole 835 MHz; Type: D835V2; Serial: D835V2 - SN:464

Communication System: CW; Frequency: 835 MHz; Duty Cycle: 1:1

Medium parameters used: $f = 835 \text{ MHz}$; $\sigma = 0.875 \text{ mho/m}$; $\epsilon_r = 41.5$; $\rho = 1000 \text{ kg/m}^3$

Phantom section: Flat Section

DASY4 Configuration:

Probe: EX3DV4 - SN3643; ConvF(8.94, 8.94, 8.94); Calibrated: 2012-01-27; Electronics: DAE3 Sn519

Phantom: SAM with 835MHz; Type: SAM; Serial: TP-1223

Measurement SW: DASY4, V4.7 Build 80; Postprocessing SW: SEMCAD, V1.8 Build 186

Test Date: 2012-12-24; Ambient Temp: 21.2; Tissue Temp: 21.5

Dipole Validation

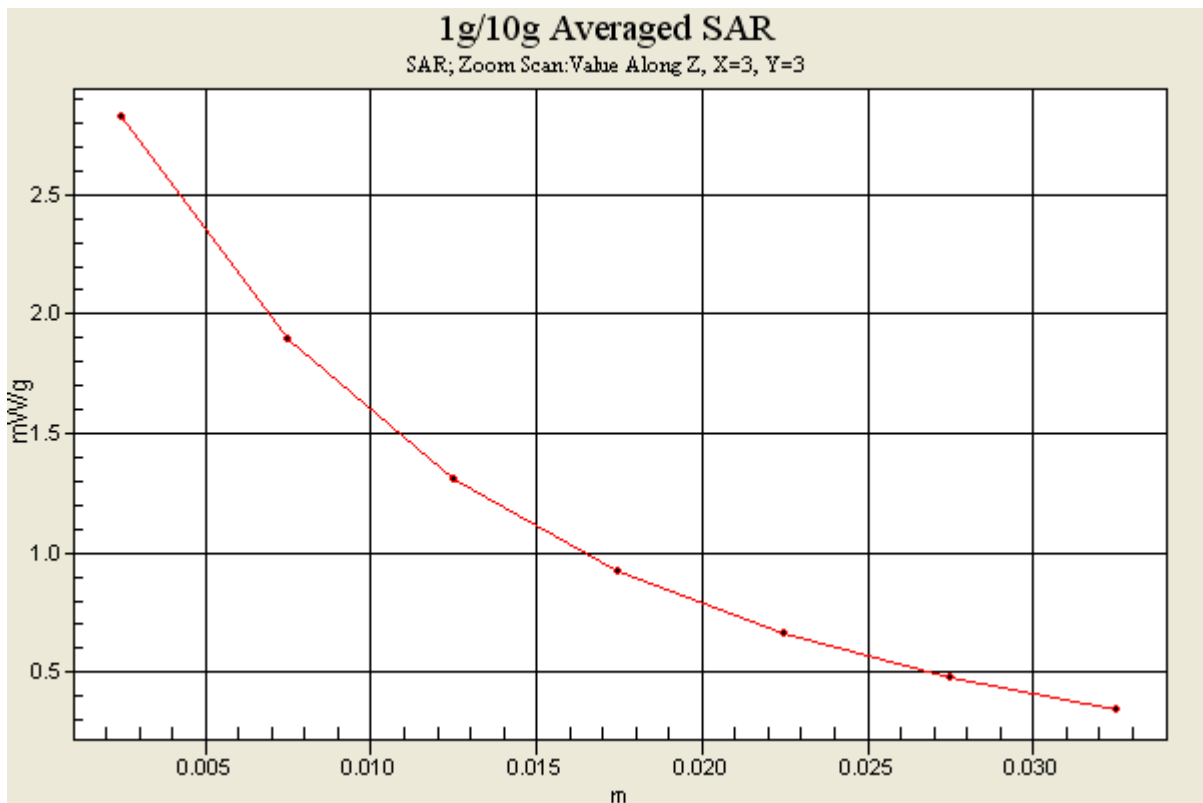
Area Scan (51x101x1): Measurement grid: $dx=15\text{mm}$, $dy=15\text{mm}$

Zoom Scan (7x7x7)/Cube 0: Measurement grid: $dx=5\text{mm}$, $dy=5\text{mm}$, $dz=5\text{mm}$

Power Drift = 0.032 dB

Peak SAR (extrapolated) = 3.48 W/kg

SAR(1 g) = 2.31 W/kg; SAR(10 g) = 1.52 W/kg



DIGITAL EMC CO., LTD

DUT: Dipole 835 MHz; Type: D835V2; Serial: D835V2 - SN:464

Communication System: CW; Frequency: 835 MHz; Duty Cycle: 1:1

Medium parameters used: $f = 835 \text{ MHz}$; $\sigma = 0.955 \text{ mho/m}$; $\epsilon_r = 55.9$; $\rho = 1000 \text{ kg/m}^3$

Phantom section: Flat Section

DASY4 Configuration:

Probe: EX3DV4 - SN3643; ConvF(9.12, 9.12, 9.12); Calibrated: 2012-01-27; Electronics: DAE3 Sn519

Phantom: SAM with 835MHz; Type: SAM; Serial: TP-1223

Measurement SW: DASY4, V4.7 Build 80; Postprocessing SW: SEMCAD, V1.8 Build 186

Test Date: 2012-12-22; Ambient Temp: 21.7; Tissue Temp: 21.9

Dipole Validation

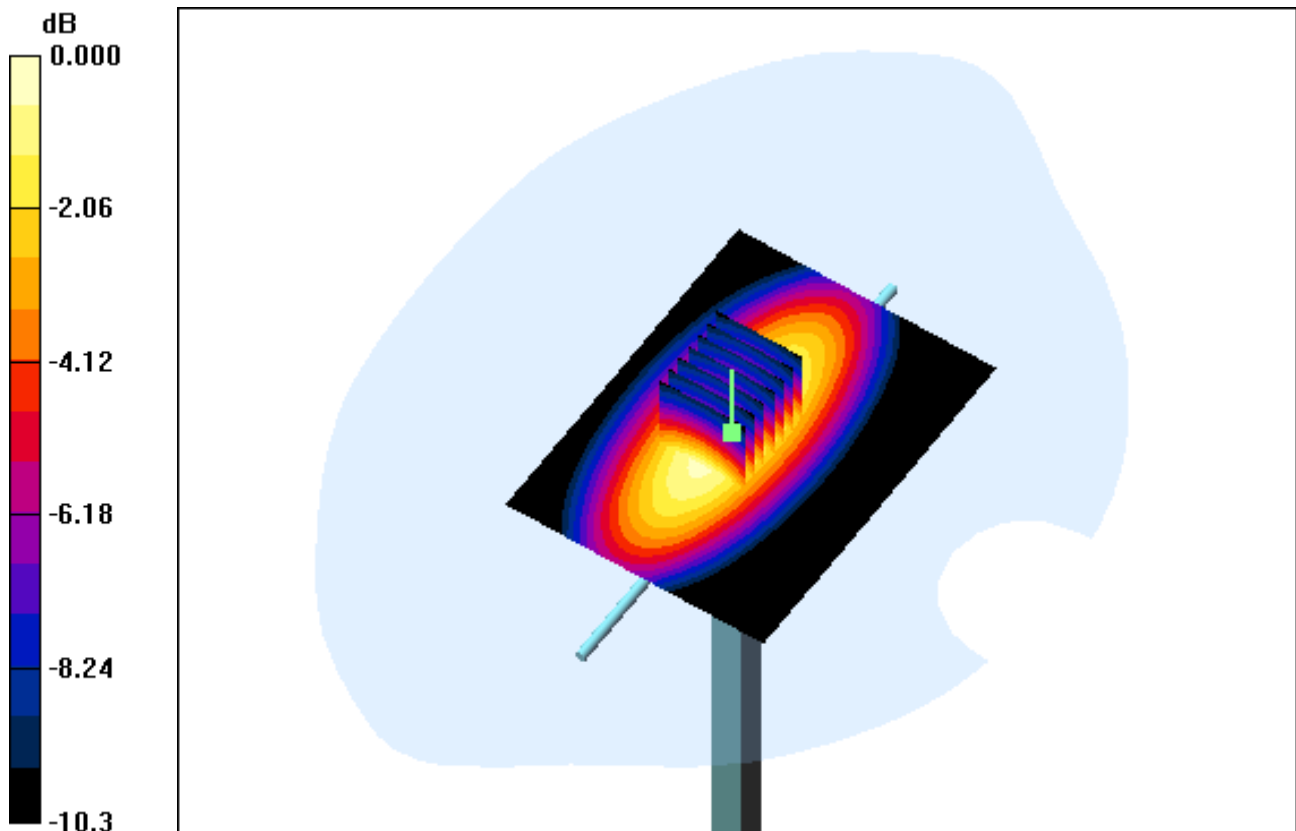
Area Scan (61x81x1): Measurement grid: $dx=15\text{mm}$, $dy=15\text{mm}$

Zoom Scan (7x7x7)/Cube 0: Measurement grid: $dx=5\text{mm}$, $dy=5\text{mm}$, $dz=5\text{mm}$

Power Drift = 0.059 dB

Peak SAR (extrapolated) = 3.79 W/kg

SAR(1 g) = 2.52 W/kg; SAR(10 g) = 1.66 W/kg



0 dB = 3.08mW/g

DIGITAL EMC CO., LTD

DUT: Dipole 835 MHz; Type: D835V2; Serial: D835V2 - SN:464

Communication System: CW; Frequency: 835 MHz; Duty Cycle: 1:1

Medium parameters used: $f = 835 \text{ MHz}$; $\sigma = 0.955 \text{ mho/m}$; $\epsilon_r = 55.9$; $\rho = 1000 \text{ kg/m}^3$

Phantom section: Flat Section

DASY4 Configuration:

Probe: EX3DV4 - SN3643; ConvF(9.12, 9.12, 9.12); Calibrated: 2012-01-27; Electronics: DAE3 Sn519

Phantom: SAM with 835MHz; Type: SAM; Serial: TP-1223

Measurement SW: DASY4, V4.7 Build 80; Postprocessing SW: SEMCAD, V1.8 Build 186

Test Date: 2012-12-22; Ambient Temp: 21.7; Tissue Temp: 21.9

Dipole Validation

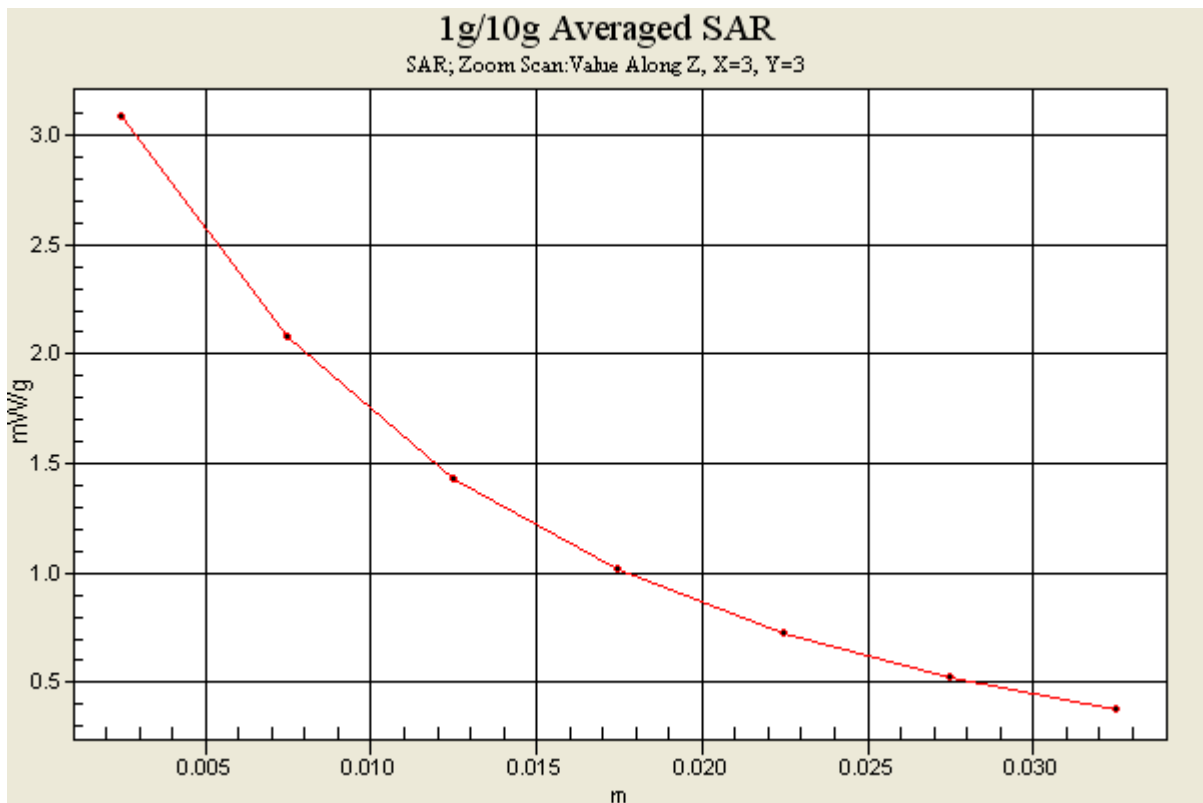
Area Scan (61x81x1): Measurement grid: $dx=15\text{mm}$, $dy=15\text{mm}$

Zoom Scan (7x7x7)/Cube 0: Measurement grid: $dx=5\text{mm}$, $dy=5\text{mm}$, $dz=5\text{mm}$

Power Drift = 0.059 dB

Peak SAR (extrapolated) = 3.79 W/kg

SAR(1 g) = 2.52 W/kg; SAR(10 g) = 1.66 W/kg



DIGITAL EMC CO., LTD

DUT: Dipole 835 MHz; Type: D835V2; Serial: D835V2 - SN:464

Communication System: CW; Frequency: 835 MHz; Duty Cycle: 1:1

Medium parameters used: $f = 835$ MHz; $\sigma = 0.875$ mho/m; $\epsilon_r = 41.5$; $\rho = 1000$ kg/m³

Phantom section: Flat Section

DASY4 Configuration:

Probe: EX3DV4 - SN3643; ConvF(8.94, 8.94, 8.94); Calibrated: 2012-01-27; Electronics: DAE3 Sn519

Phantom: SAM with 835MHz; Type: SAM; Serial: TP-1223

Measurement SW: DASY4, V4.7 Build 80; Postprocessing SW: SEMCAD, V1.8 Build 186

Test Date: 2012-12-29; Ambient Temp: 21.6; Tissue Temp: 21.9

Dipole Validation

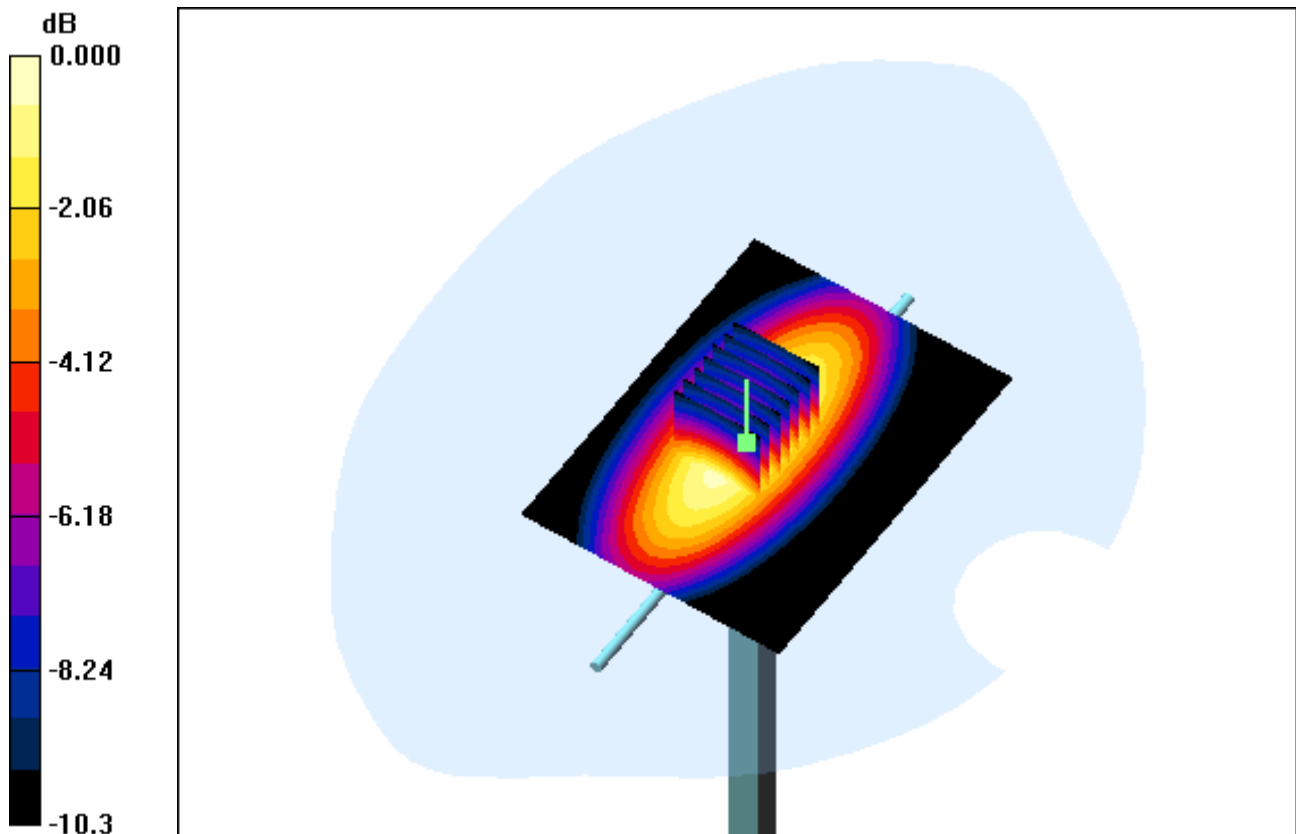
Area Scan (61x81x1): Measurement grid: $dx=15$ mm, $dy=15$ mm

Zoom Scan (7x7x7)/Cube 0: Measurement grid: $dx=5$ mm, $dy=5$ mm, $dz=5$ mm

Power Drift = 0.059 dB

Peak SAR (extrapolated) = 3.58 W/kg

SAR(1 g) = 2.37 W/kg; SAR(10 g) = 1.56 W/kg



0 dB = 2.90mW/g

DIGITAL EMC CO., LTD

DUT: Dipole 835 MHz; Type: D835V2; Serial: D835V2 - SN:464

Communication System: CW; Frequency: 835 MHz; Duty Cycle: 1:1

Medium parameters used: $f = 835$ MHz; $\sigma = 0.875$ mho/m; $\epsilon_r = 41.5$; $\rho = 1000$ kg/m³

Phantom section: Flat Section

DASY4 Configuration:

Probe: EX3DV4 - SN3643; ConvF(8.94, 8.94, 8.94); Calibrated: 2012-01-27; Electronics: DAE3 Sn519

Phantom: SAM with 835MHz; Type: SAM; Serial: TP-1223

Measurement SW: DASY4, V4.7 Build 80; Postprocessing SW: SEMCAD, V1.8 Build 186

Test Date: 2012-12-29; Ambient Temp: 21.6; Tissue Temp: 21.9

Dipole Validation

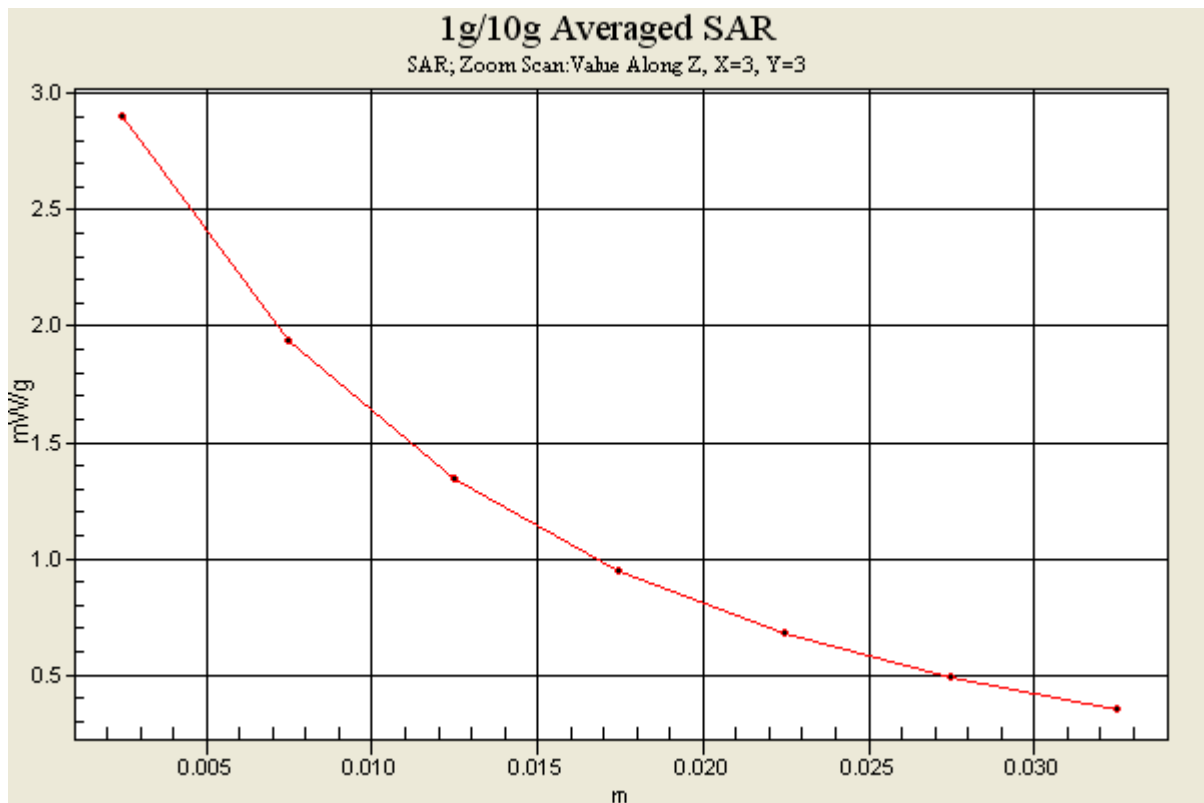
Area Scan (61x81x1): Measurement grid: dx=15mm, dy=15mm

Zoom Scan (7x7x7)/Cube 0: Measurement grid: dx=5mm, dy=5mm, dz=5mm

Power Drift = 0.059 dB

Peak SAR (extrapolated) = 3.58 W/kg

SAR(1 g) = 2.37 W/kg; SAR(10 g) = 1.56 W/kg



DIGITAL EMC CO., LTD

DUT: Dipole 835 MHz; Type: D835V2; Serial: D835V2 - SN:464

Communication System: CW; Frequency: 835 MHz; Duty Cycle: 1:1

Medium parameters used: $f = 835 \text{ MHz}$; $\sigma = 0.957 \text{ mho/m}$; $\epsilon_r = 56$; $\rho = 1000 \text{ kg/m}^3$

Phantom section: Flat Section

DASY4 Configuration:

Probe: EX3DV4 - SN3643; ConvF(9.12, 9.12, 9.12); Calibrated: 2012-01-27; Electronics: DAE3 Sn519

Phantom: SAM with 835MHz; Type: SAM; Serial: TP-1223

Measurement SW: DASY4, V4.7 Build 80; Postprocessing SW: SEMCAD, V1.8 Build 186

Test Date: 2012-12-29; Ambient Temp: 21.6; Tissue Temp: 21.9

Dipole Validation

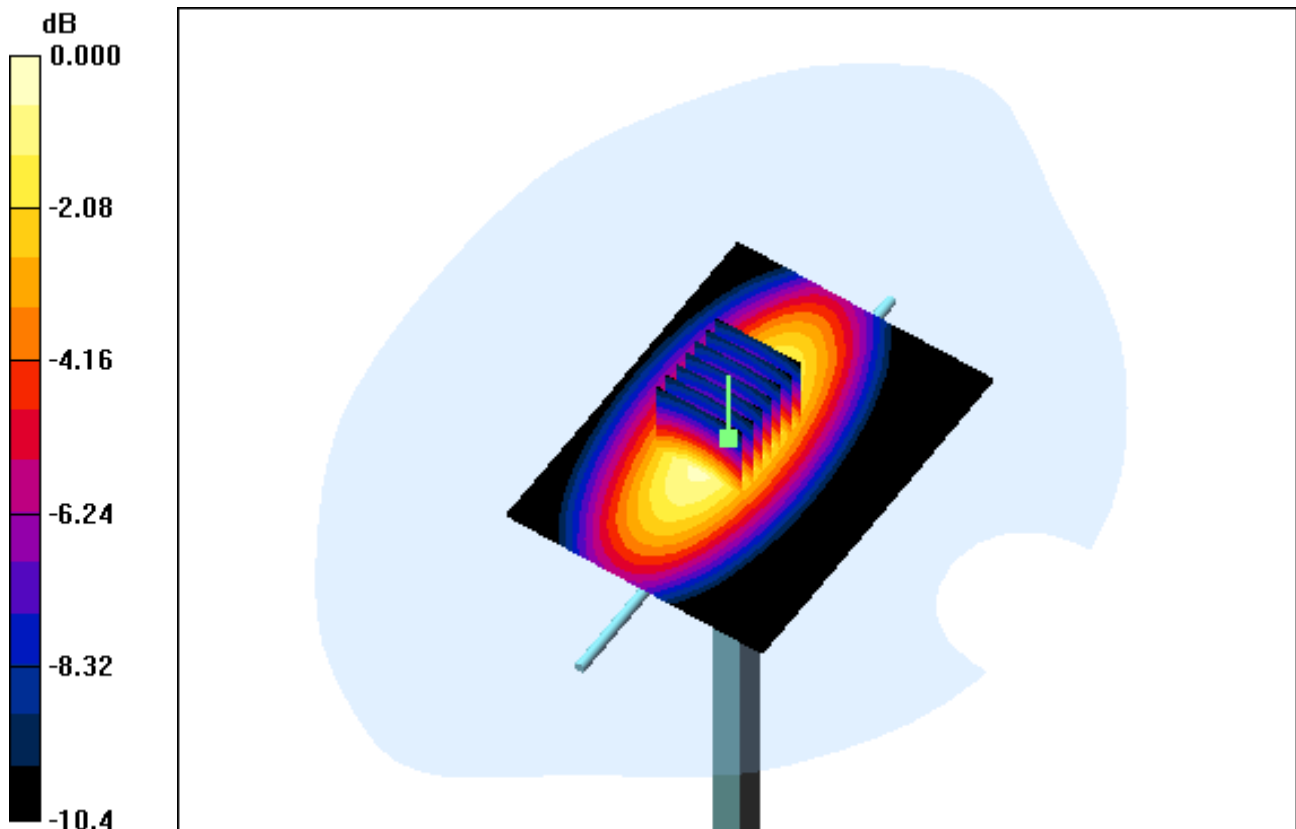
Area Scan (61x81x1): Measurement grid: $dx=15\text{mm}$, $dy=15\text{mm}$

Zoom Scan (7x7x7)/Cube 0: Measurement grid: $dx=5\text{mm}$, $dy=5\text{mm}$, $dz=5\text{mm}$

Power Drift = -0.035 dB

Peak SAR (extrapolated) = 3.61 W/kg

SAR(1 g) = 2.39 W/kg; SAR(10 g) = 1.57 W/kg



0 dB = 2.92mW/g

DIGITAL EMC CO., LTD

DUT: Dipole 835 MHz; Type: D835V2; Serial: D835V2 - SN:464

Communication System: CW; Frequency: 835 MHz; Duty Cycle: 1:1

Medium parameters used: $f = 835$ MHz; $\sigma = 0.957$ mho/m; $\epsilon_r = 56$; $\rho = 1000$ kg/m³

Phantom section: Flat Section

DASY4 Configuration:

Probe: EX3DV4 - SN3643; ConvF(9.12, 9.12, 9.12); Calibrated: 2012-01-27; Electronics: DAE3 Sn519

Phantom: SAM with 835MHz; Type: SAM; Serial: TP-1223

Measurement SW: DASY4, V4.7 Build 80; Postprocessing SW: SEMCAD, V1.8 Build 186

Test Date: 2012-12-29; Ambient Temp: 21.6; Tissue Temp: 21.9

Dipole Validation

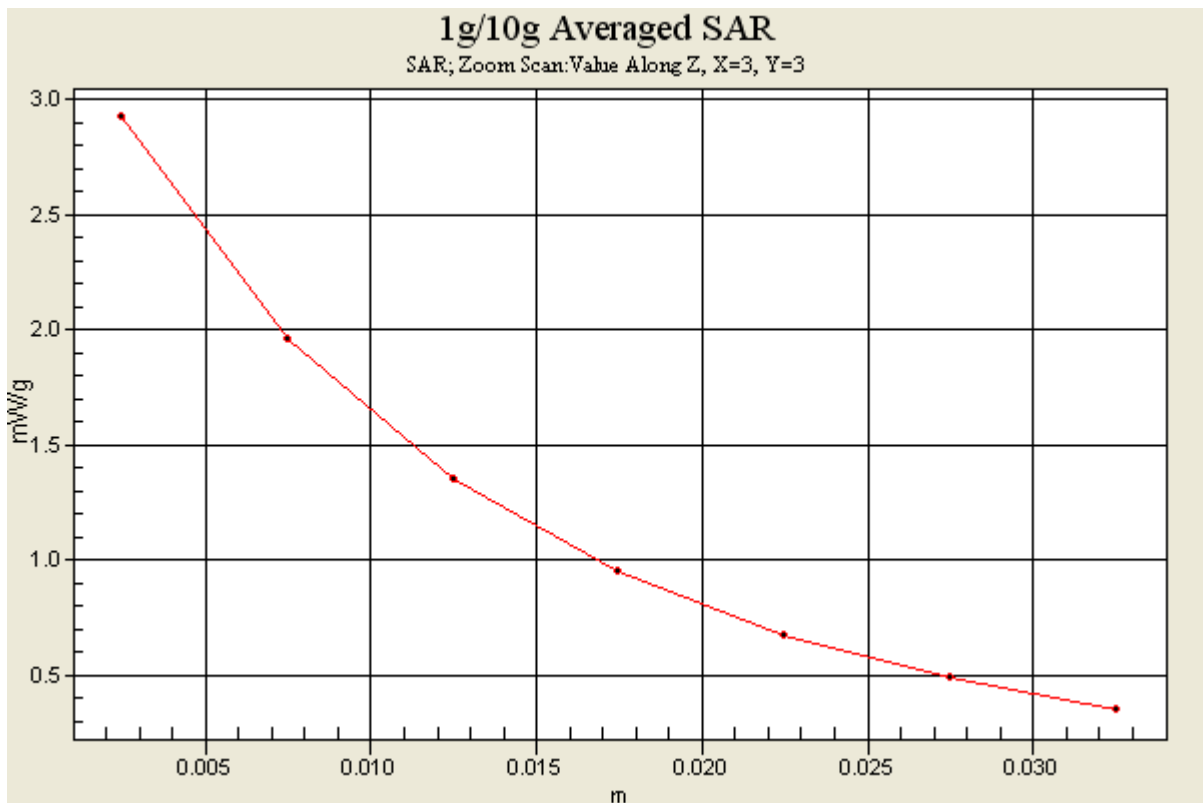
Area Scan (61x81x1): Measurement grid: dx=15mm, dy=15mm

Zoom Scan (7x7x7)/Cube 0: Measurement grid: dx=5mm, dy=5mm, dz=5mm

Power Drift = -0.035 dB

Peak SAR (extrapolated) = 3.61 W/kg

SAR(1 g) = 2.39 W/kg; SAR(10 g) = 1.57 W/kg



DIGITAL EMC CO., LTD

DUT: Dipole 1900 MHz; Type: D1900V2; Serial: D1900V2 - SN:5d029

Communication System: CW; Frequency: 1900 MHz; Duty Cycle: 1:1

Medium parameters used: $f = 1900$ MHz; $\sigma = 1.42$ mho/m; $\epsilon_r = 39.7$; $\rho = 1000$ kg/m³

Phantom section: Flat Section

DASY4 Configuration:

Probe: EX3DV4 - SN3643; ConvF(7.97, 7.97, 7.97); Calibrated: 2012-01-27; Electronics: DAE3 Sn519

Phantom: SAM 1800/1900 MHz; Type: SAM; Serial: TP-1224

Measurement SW: DASY4, V4.7 Build 80; Postprocessing SW: SEMCAD, V1.8 Build 186

Test Date: 2012-12-26; Ambient Temp: 21.4; Tissue Temp: 21.8

Dipole Validation

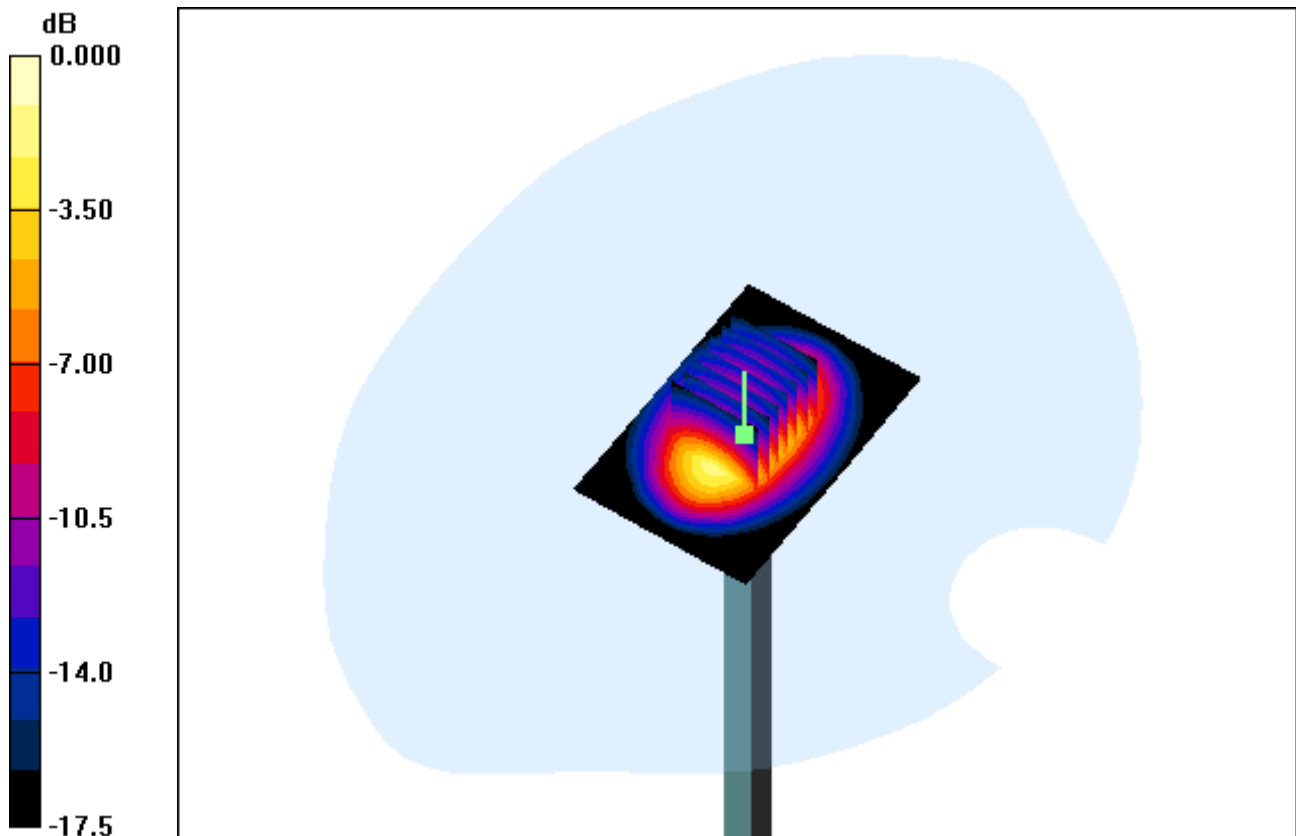
Area Scan (61x91x1): Measurement grid: dx=10mm, dy=10mm

Zoom Scan (7x7x7)/Cube 0: Measurement grid: dx=5mm, dy=5mm, dz=5mm

Power Drift = 0.016 dB

Peak SAR (extrapolated) = 17.8 W/kg

SAR(1 g) = 9.55 W/kg; SAR(10 g) = 4.97 W/kg



0 dB = 13.0mW/g

DIGITAL EMC CO., LTD

DUT: Dipole 1900 MHz; Type: D1900V2; Serial: D1900V2 - SN:5d029

Communication System: CW; Frequency: 1900 MHz; Duty Cycle: 1:1

Medium parameters used: $f = 1900$ MHz; $\sigma = 1.42$ mho/m; $\epsilon_r = 39.7$; $\rho = 1000$ kg/m³

Phantom section: Flat Section

DASY4 Configuration:

Probe: EX3DV4 - SN3643; ConvF(7.97, 7.97, 7.97); Calibrated: 2012-01-27; Electronics: DAE3 Sn519

Phantom: SAM 1800/1900 MHz; Type: SAM; Serial: TP-1224

Measurement SW: DASY4, V4.7 Build 80; Postprocessing SW: SEMCAD, V1.8 Build 186

Test Date: 2012-12-26; Ambient Temp: 21.4; Tissue Temp: 21.8

Dipole Validation

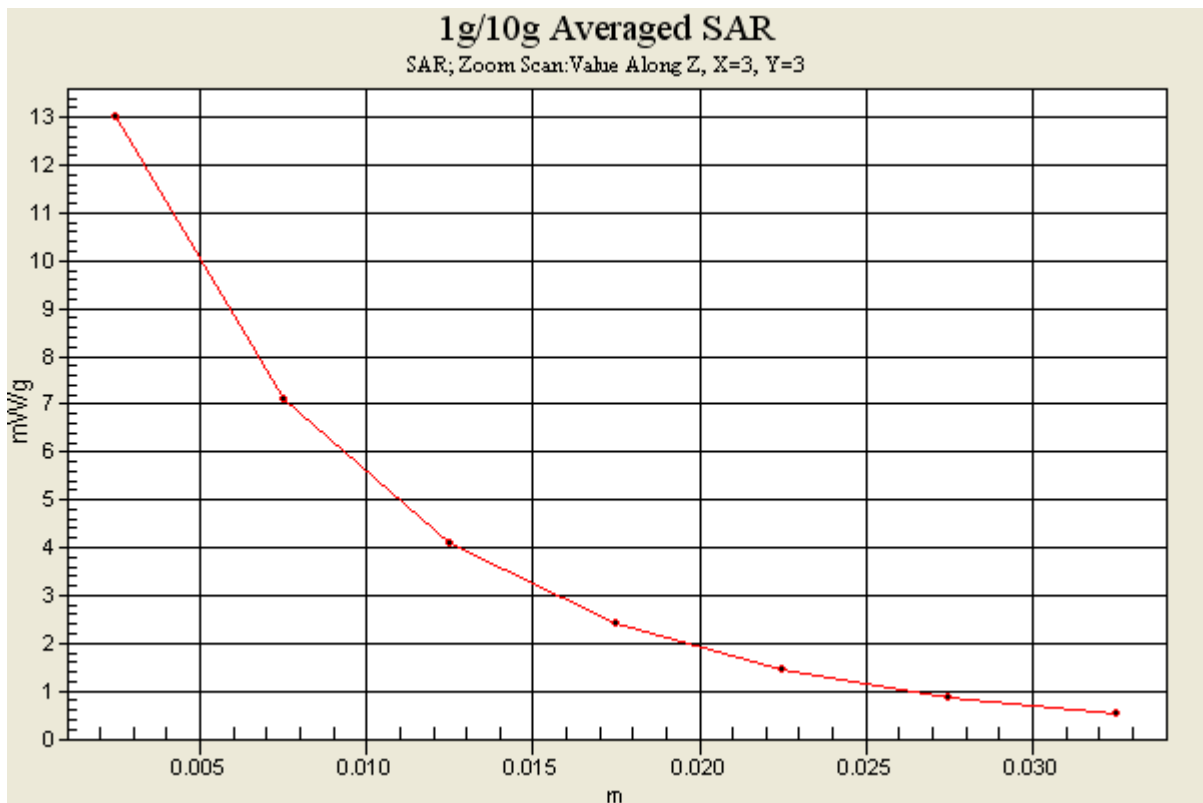
Area Scan (61x91x1): Measurement grid: dx=10mm, dy=10mm

Zoom Scan (7x7x7)/Cube 0: Measurement grid: dx=5mm, dy=5mm, dz=5mm

Power Drift = 0.016 dB

Peak SAR (extrapolated) = 17.8 W/kg

SAR(1 g) = 9.55 W/kg; SAR(10 g) = 4.97 W/kg



DIGITAL EMC CO., LTD

DUT: Dipole 1900 MHz; Type: D1900V2; Serial: D1900V2 - SN:5d029

Communication System: CW; Frequency: 1900 MHz; Duty Cycle: 1:1

Medium parameters used: $f = 1900$ MHz; $\sigma = 1.52$ mho/m; $\epsilon_r = 53.7$; $\rho = 1000$ kg/m³

Phantom section: Flat Section

DASY4 Configuration:

Probe: EX3DV4 - SN3643; ConvF(7.34, 7.34, 7.34); Calibrated: 2012-01-27; Electronics: DAE3 Sn519

Phantom: SAM 1800/1900 MHz; Type: SAM; Serial: TP-1224

Measurement SW: DASY4, V4.7 Build 80; Postprocessing SW: SEMCAD, V1.8 Build 186

Test Date: 2012-12-23; Ambient Temp: 21.1; Tissue Temp: 21.4

Dipole Validation

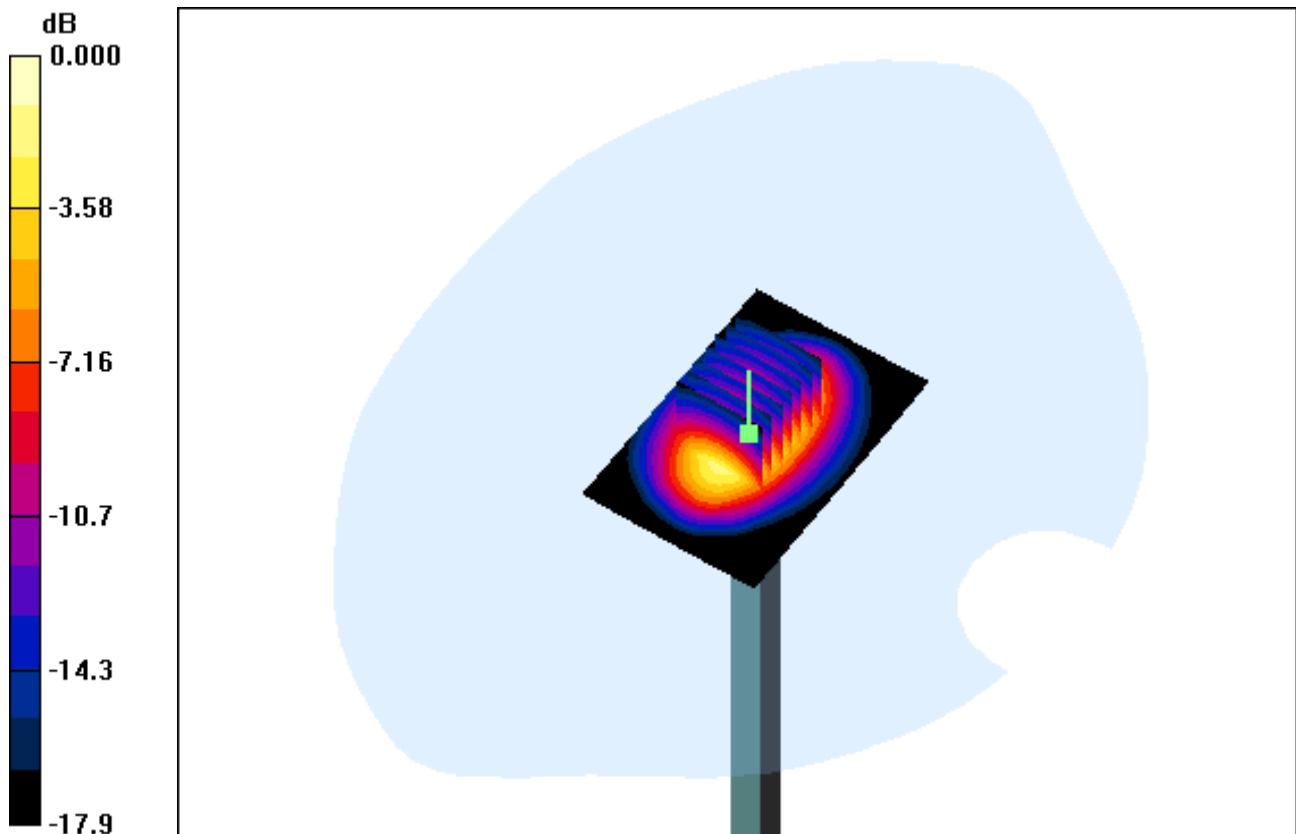
Area Scan (61x91x1): Measurement grid: dx=10mm, dy=10mm

Zoom Scan (7x7x7)/Cube 0: Measurement grid: dx=5mm, dy=5mm, dz=5mm

Power Drift = 0.019 dB

Peak SAR (extrapolated) = 18.1 W/kg

SAR(1 g) = 9.63 W/kg; SAR(10 g) = 4.94 W/kg



0 dB = 13.1mW/g

DIGITAL EMC CO., LTD

DUT: Dipole 1900 MHz; Type: D1900V2; Serial: D1900V2 - SN:5d029

Communication System: CW; Frequency: 1900 MHz; Duty Cycle: 1:1

Medium parameters used: $f = 1900$ MHz; $\sigma = 1.52$ mho/m; $\epsilon_r = 53.7$; $\rho = 1000$ kg/m³

Phantom section: Flat Section

DASY4 Configuration:

Probe: EX3DV4 - SN3643; ConvF(7.34, 7.34, 7.34); Calibrated: 2012-01-27; Electronics: DAE3 Sn519

Phantom: SAM 1800/1900 MHz; Type: SAM; Serial: TP-1224

Measurement SW: DASY4, V4.7 Build 80; Postprocessing SW: SEMCAD, V1.8 Build 186

Test Date: 2012-12-23; Ambient Temp: 21.1; Tissue Temp: 21.4

Dipole Validation

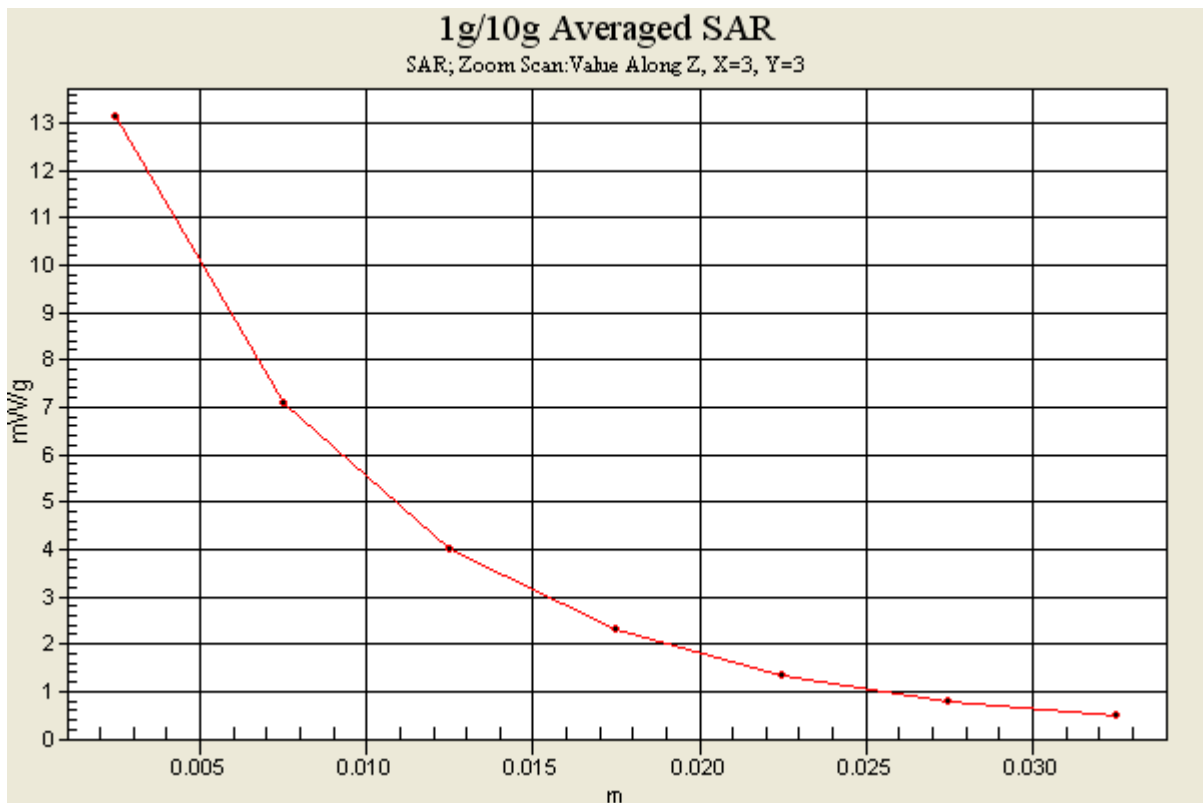
Area Scan (61x91x1): Measurement grid: dx=10mm, dy=10mm

Zoom Scan (7x7x7)/Cube 0: Measurement grid: dx=5mm, dy=5mm, dz=5mm

Power Drift = 0.019 dB

Peak SAR (extrapolated) = 18.1 W/kg

SAR(1 g) = 9.63 W/kg; SAR(10 g) = 4.94 W/kg



DIGITAL EMC CO., LTD

DUT: Dipole 2450 MHz; Type: D2450V2; Serial: D2450V2 - SN:726

Communication System: CW; Frequency: 2450 MHz; Duty Cycle: 1:1
Medium parameters used: $f = 2450$ MHz; $\sigma = 1.85$ mho/m; $\epsilon_r = 38.2$; $\rho = 1000$ kg/m³
Phantom section: Flat Section

DASY4 Configuration:

Probe: EX3DV4 - SN3643; ConvF(7.12, 7.12, 7.12); Calibrated: 2012-01-27; Electronics: DAE3 Sn519
Phantom: SAM 1800/1900 MHz; Type: SAM; Serial: TP-1224
Measurement SW: DASY4, V4.7 Build 80; Postprocessing SW: SEMCAD, V1.8 Build 186

Test Date: 2012-12-30; Ambient Temp: 21.3; Tissue Temp: 21.7

Dipole Validation

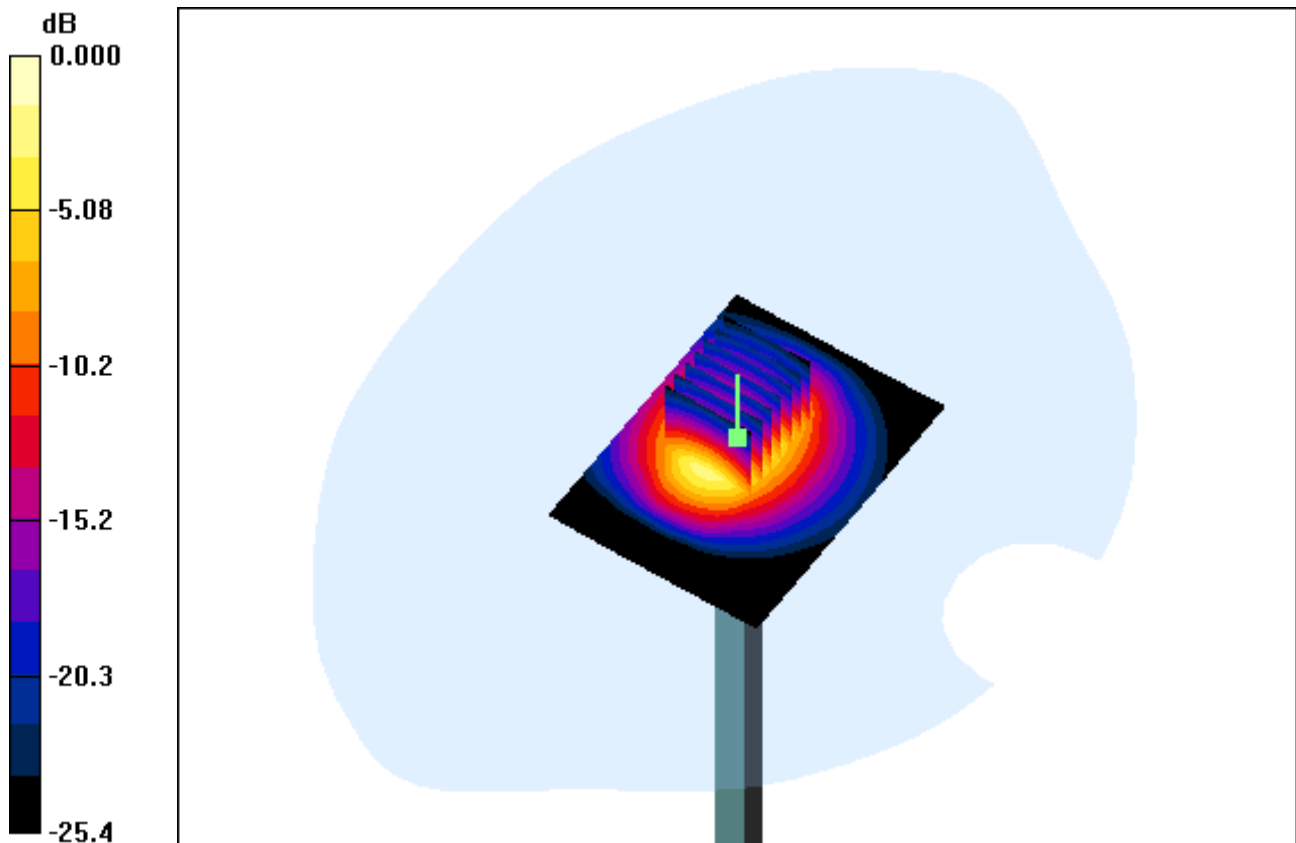
Area Scan (61x81x1): Measurement grid: dx=12mm, dy=12mm

Zoom Scan (7x7x7)/Cube 0: Measurement grid: dx=5mm, dy=5mm, dz=5mm

Power Drift = 0.106 dB

Peak SAR (extrapolated) = 30.0 W/kg

SAR(1 g) = 13.2 W/kg; SAR(10 g) = 5.83 W/kg



0 dB = 20.9mW/g

DIGITAL EMC CO., LTD

DUT: Dipole 2450 MHz; Type: D2450V2; Serial: D2450V2 - SN:726

Communication System: CW; Frequency: 2450 MHz; Duty Cycle: 1:1
Medium parameters used: $f = 2450$ MHz; $\sigma = 1.85$ mho/m; $\epsilon_r = 38.2$; $\rho = 1000$ kg/m³
Phantom section: Flat Section

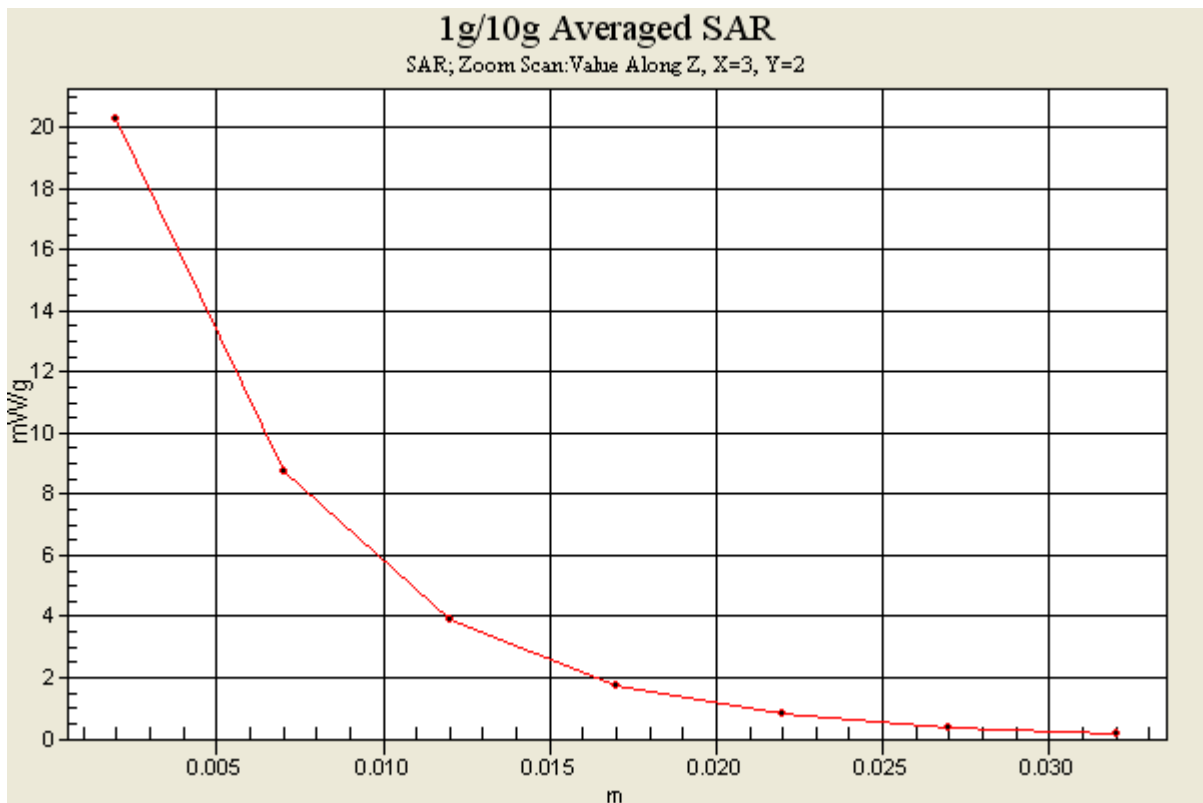
DASY4 Configuration:

Probe: EX3DV4 - SN3643; ConvF(7.12, 7.12, 7.12); Calibrated: 2012-01-27; Electronics: DAE3 Sn519
Phantom: SAM 1800/1900 MHz; Type: SAM; Serial: TP-1224
Measurement SW: DASY4, V4.7 Build 80; Postprocessing SW: SEMCAD, V1.8 Build 186

Test Date: 2012-12-30; Ambient Temp: 21.3; Tissue Temp: 21.7

Dipole Validation

Area Scan (61x81x1): Measurement grid: dx=12mm, dy=12mm
Zoom Scan (7x7x7)/Cube 0: Measurement grid: dx=5mm, dy=5mm, dz=5mm
Power Drift = 0.106 dB
Peak SAR (extrapolated) = 30.0 W/kg
SAR(1 g) = 13.2 W/kg; SAR(10 g) = 5.83 W/kg



DIGITAL EMC CO., LTD

DUT: Dipole 2450 MHz; Type: D2450V2; Serial: D2450V2 - SN:726

Communication System: CW; Frequency: 2450 MHz; Duty Cycle: 1:1
Medium parameters used: $f = 2450$ MHz; $\sigma = 2$ mho/m; $\epsilon_r = 53.5$; $\rho = 1000$ kg/m³
Phantom section: Flat Section

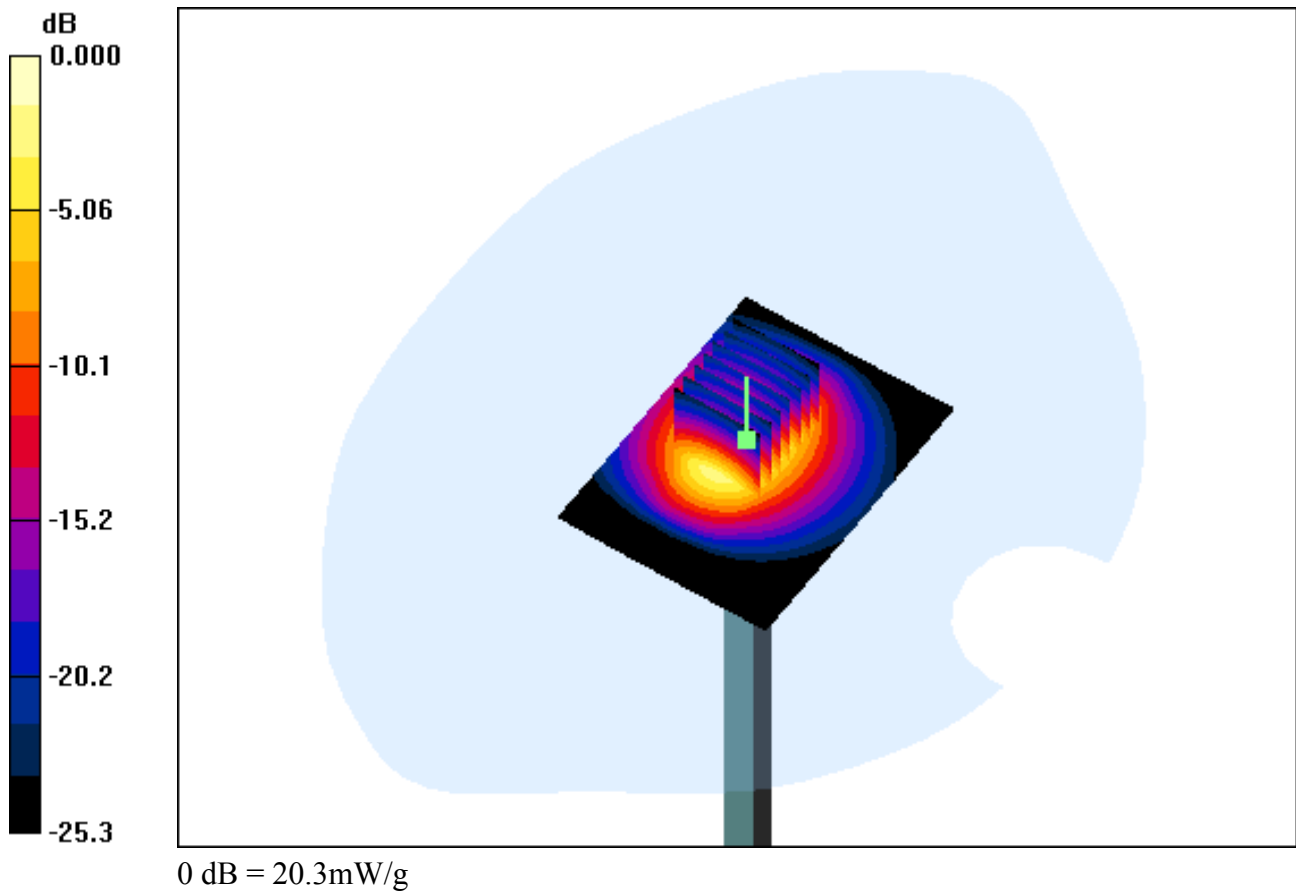
DASY4 Configuration:

Probe: EX3DV4 - SN3643; ConvF(6.95, 6.95, 6.95); Calibrated: 2012-01-27; Electronics: DAE3 Sn519
Phantom: SAM 1800/1900 MHz; Type: SAM; Serial: TP-1224
Measurement SW: DASY4, V4.7 Build 80; Postprocessing SW: SEMCAD, V1.8 Build 186

Test Date: 2012-12-30; Ambient Temp: 21.3; Tissue Temp: 21.7

Dipole Validation

Area Scan (61x81x1): Measurement grid: dx=12mm, dy=12mm
Zoom Scan (7x7x7)/Cube 0: Measurement grid: dx=5mm, dy=5mm, dz=5mm
Power Drift = 0.028 dB
Peak SAR (extrapolated) = 29.3 W/kg
SAR(1 g) = 12.6 W/kg; SAR(10 g) = 5.55 W/kg



DIGITAL EMC CO., LTD

DUT: Dipole 2450 MHz; Type: D2450V2; Serial: D2450V2 - SN:726

Communication System: CW; Frequency: 2450 MHz; Duty Cycle: 1:1
Medium parameters used: $f = 2450$ MHz; $\sigma = 2$ mho/m; $\epsilon_r = 53.5$; $\rho = 1000$ kg/m³
Phantom section: Flat Section

DASY4 Configuration:

Probe: EX3DV4 - SN3643; ConvF(6.95, 6.95, 6.95); Calibrated: 2012-01-27; Electronics: DAE3 Sn519
Phantom: SAM 1800/1900 MHz; Type: SAM; Serial: TP-1224
Measurement SW: DASY4, V4.7 Build 80; Postprocessing SW: SEMCAD, V1.8 Build 186

Test Date: 2012-12-30; Ambient Temp: 21.3; Tissue Temp: 21.7

Dipole Validation

Area Scan (61x81x1): Measurement grid: dx=12mm, dy=12mm
Zoom Scan (7x7x7)/Cube 0: Measurement grid: dx=5mm, dy=5mm, dz=5mm
Power Drift = 0.028 dB
Peak SAR (extrapolated) = 29.3 W/kg
SAR(1 g) = 12.6 W/kg; SAR(10 g) = 5.55 W/kg

