

Dipole Validation Plots

DIGITAL EMC CO., LTD

DUT: Dipole 835 MHz; Type: D835V2; Serial: D835V2 - SN:464

Communication System: CW; Frequency: 835 MHz; Duty Cycle: 1:1
Medium parameters used: $f = 835$ MHz; $\sigma = 0.882$ mho/m; $\epsilon_r = 41.522$; $\rho = 1000$ kg/m³
Phantom section: Flat Section

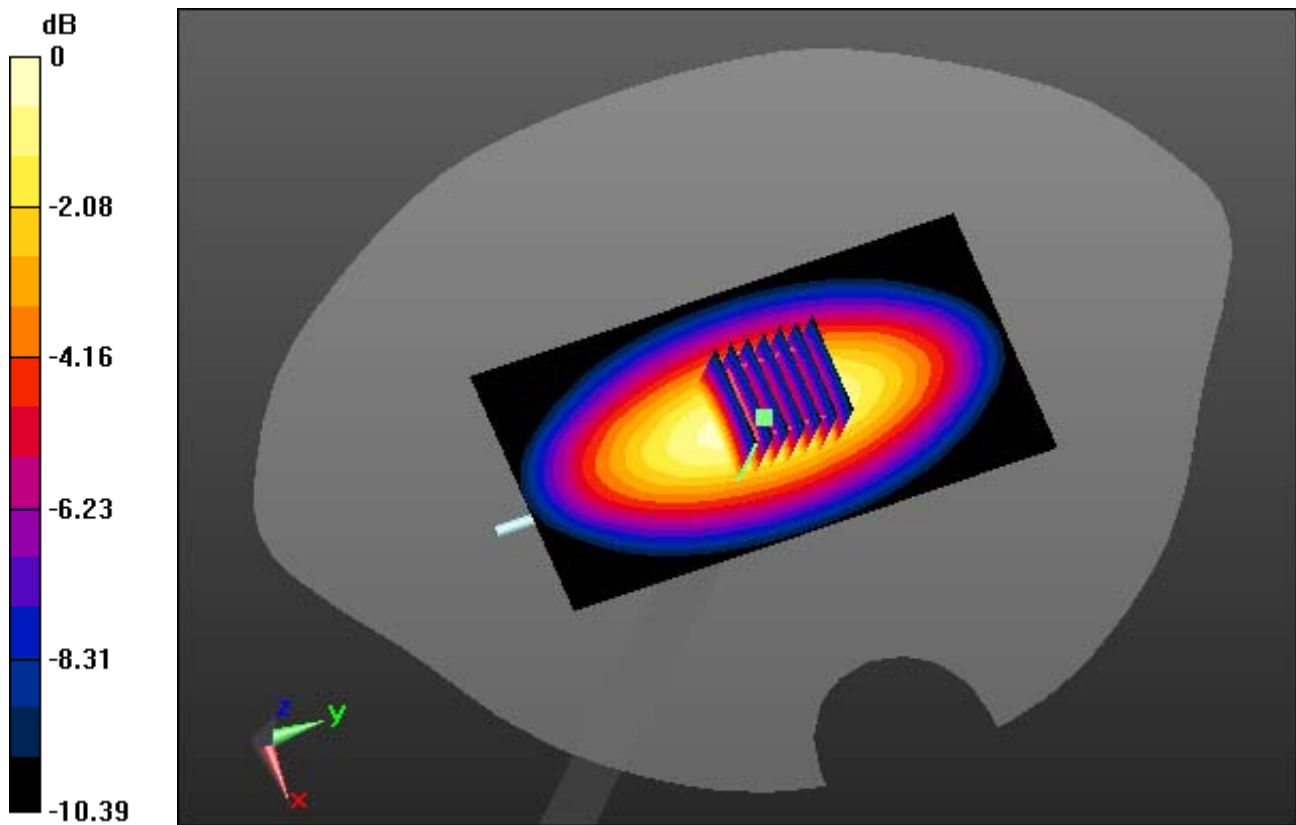
DASY4 Configuration:

Probe: EX3DV4 - SN3866; ConvF(8.98, 8.98, 8.98); Calibrated: 2012-06-20; ; Electronics: DAE4 Sn1335
Phantom: SAM with CRP_20120521; Type: SAM; Serial: 1679
Measurement SW: DASY52, Version 52.8 (2); SEMCAD X Version 14.6.6 (6477)

Test Date: 2012-12-17; Ambient Temp: 20.4; Tissue Temp: 20.9

Dipole Validation

Area Scan (51x101x1): Measurement grid: dx=15mm, dy=15mm
Zoom Scan (7x7x7)/Cube 0: Measurement grid: dx=5mm, dy=5mm, dz=5mm
Power Drift = -0.07 dB
Peak SAR (extrapolated) = 3.484 mW/g
SAR(1 g) = 2.3 W/kg; SAR(10 g) = 1.5 W/kg



0 dB = 2.80 mW/g

DIGITAL EMC CO., LTD

DUT: Dipole 835 MHz; Type: D835V2; Serial: D835V2 - SN:464

Communication System: CW; Frequency: 835 MHz; Duty Cycle: 1:1

Medium parameters used: $f = 835$ MHz; $\sigma = 0.882$ mho/m; $\epsilon_r = 41.522$; $\rho = 1000$ kg/m³

Phantom section: Flat Section

DASY4 Configuration:

Probe: EX3DV4 - SN3866; ConvF(8.98, 8.98, 8.98); Calibrated: 2012-06-20; ; Electronics: DAE4 Sn1335

Phantom: SAM with CRP_20120521; Type: SAM; Serial: 1679

Measurement SW: DASY52, Version 52.8 (2); SEMCAD X Version 14.6.6 (6477)

Test Date: 2012-12-17; Ambient Temp: 20.4; Tissue Temp: 20.9

Dipole Validation

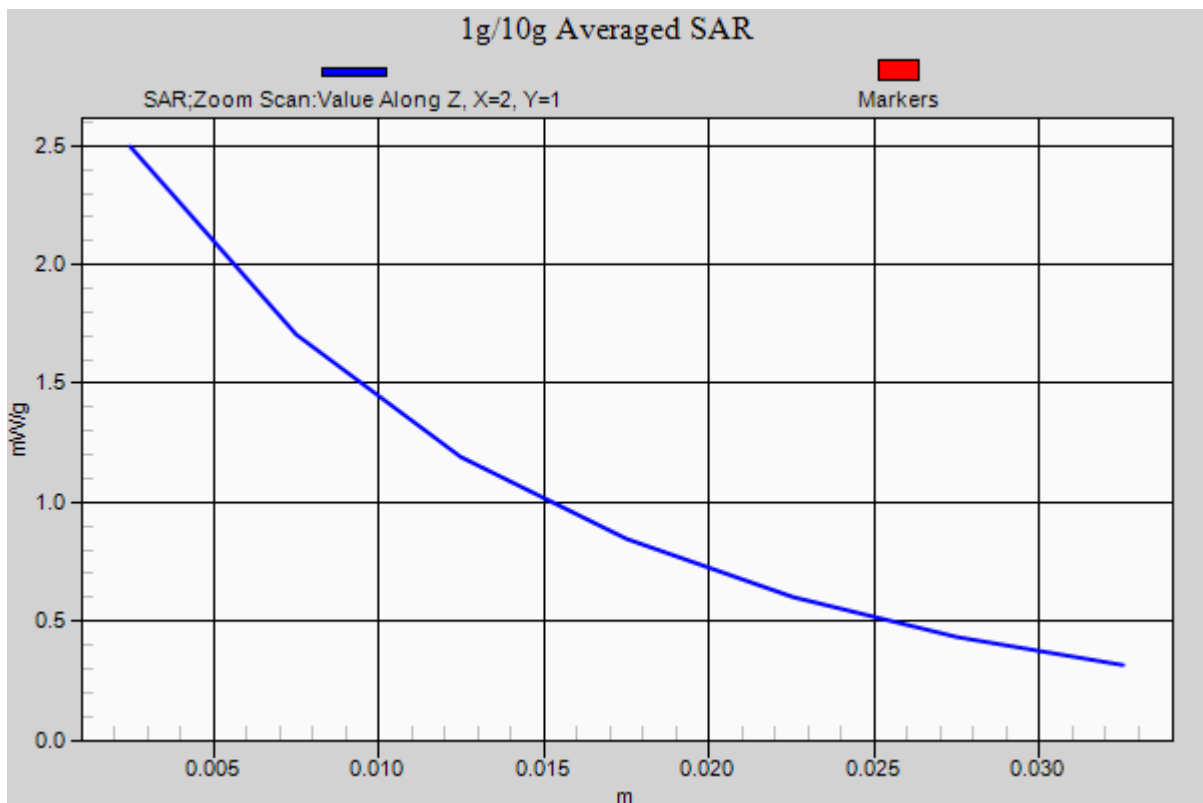
Area Scan (51x101x1): Measurement grid: dx=15mm, dy=15mm

Zoom Scan (7x7x7)/Cube 0: Measurement grid: dx=5mm, dy=5mm, dz=5mm

Power Drift = -0.07 dB

Peak SAR (extrapolated) = 3.484 mW/g

SAR(1 g) = 2.3 W/kg; SAR(10 g) = 1.5 W/kg



DIGITAL EMC CO., LTD

DUT: Dipole 835 MHz; Type: D835V2; Serial: D835V2 - SN:464

Communication System: CW; Frequency: 835 MHz; Duty Cycle: 1:1

Medium parameters used: $f = 835$ MHz; $\sigma = 0.949$ mho/m; $\epsilon_r = 55.649$; $\rho = 1000$ kg/m³

Phantom section: Flat Section

DASY5 Configuration:

Probe: EX3DV4 - SN3866; ConvF(9.03, 9.03, 9.03); Calibrated: 2012-06-20; ; Electronics: DAE4 Sn1335

Phantom: SAM with CRP_20120521; Type: SAM; Serial: 1679

Measurement SW: DASY52, Version 52.8 (2); SEMCAD X Version 14.6.6 (6477)

Test Date: 2012-12-18; Ambient Temp: 20.2; Tissue Temp: 20.5

Dipole Validation

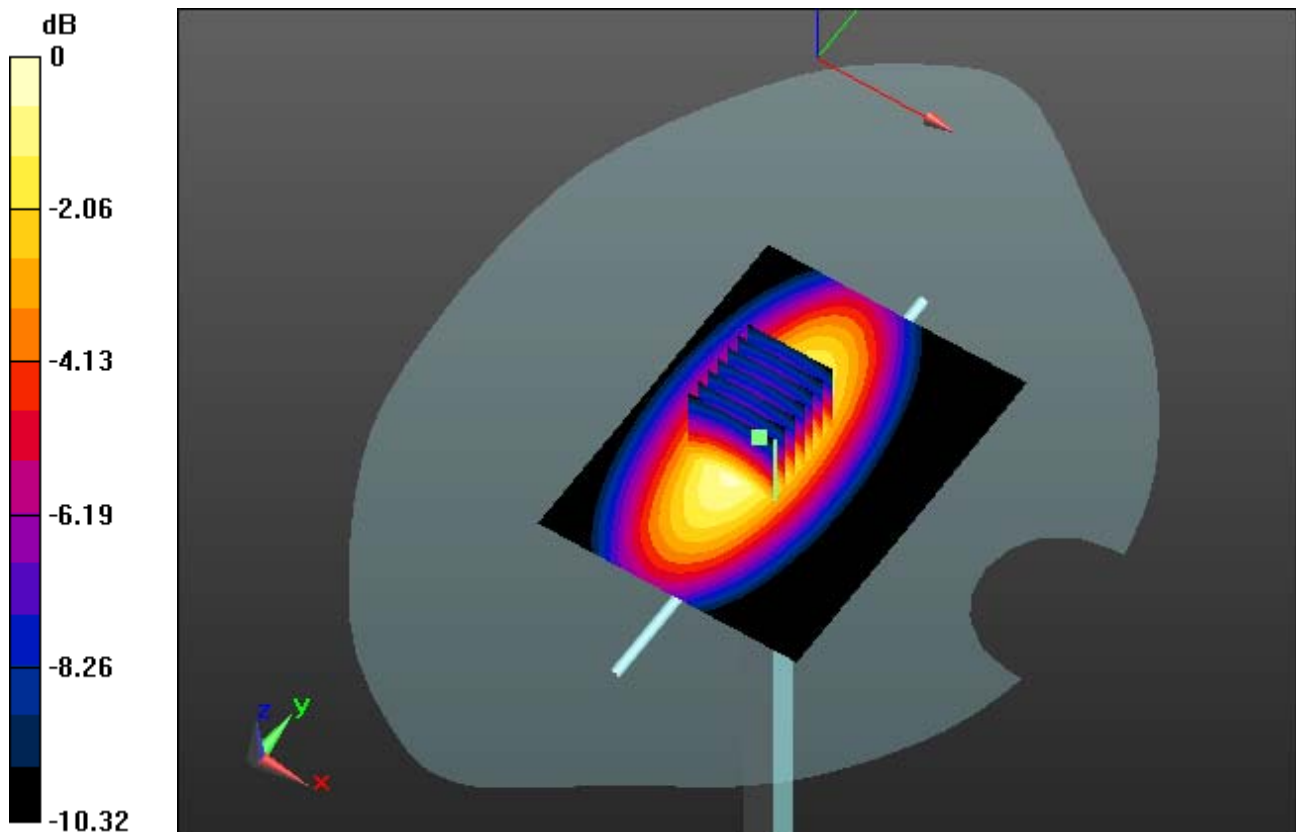
Area Scan (61x81x1): Measurement grid: dx=15mm, dy=15mm

Zoom Scan (7x7x7)/Cube 0: Measurement grid: dx=5mm, dy=5mm, dz=5mm

Power Drift = -0.03 dB

Peak SAR (extrapolated) = 3.496 mW/g

SAR(1 g) = 2.34 W/kg; SAR(10 g) = 1.54 W/kg



0 dB = 2.85 mW/g

DIGITAL EMC CO., LTD

DUT: Dipole 835 MHz; Type: D835V2; Serial: D835V2 - SN:464

Communication System: CW; Frequency: 835 MHz; Duty Cycle: 1:1
Medium parameters used: $f = 835$ MHz; $\sigma = 0.949$ mho/m; $\epsilon_r = 55.649$; $\rho = 1000$ kg/m³
Phantom section: Flat Section

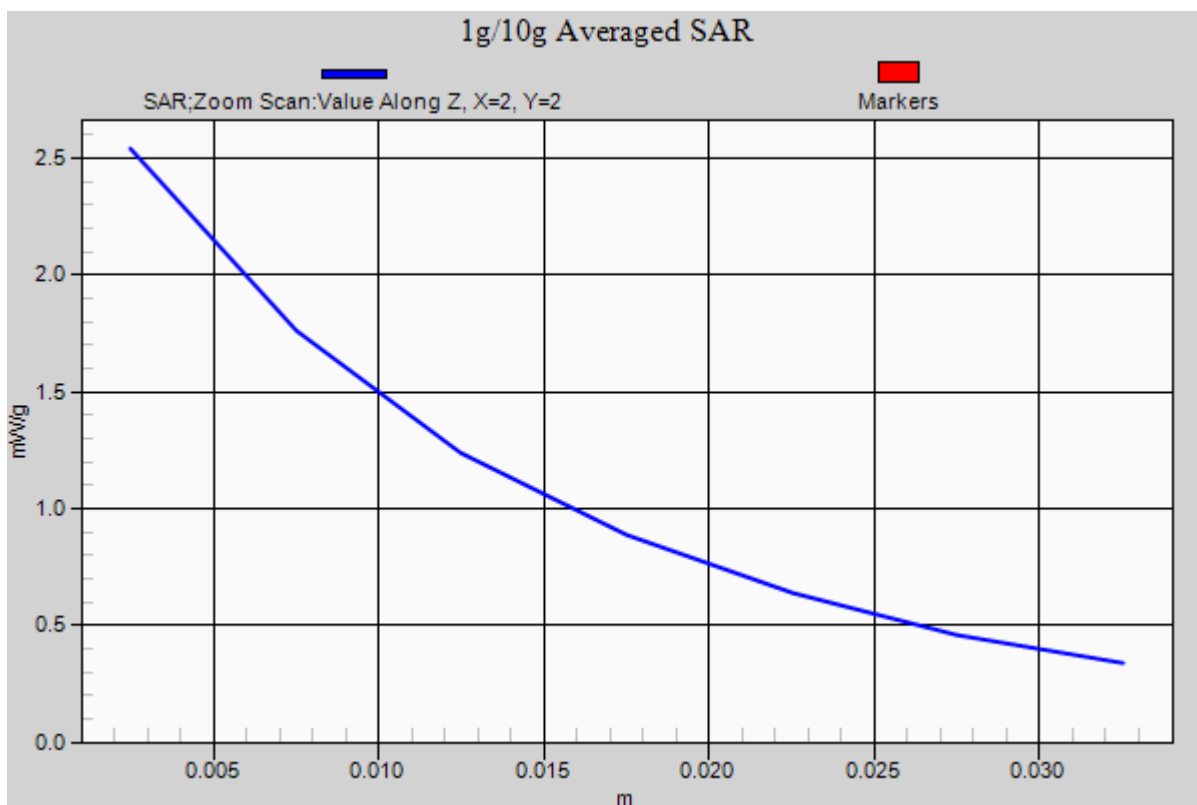
DASY5 Configuration:

Probe: EX3DV4 - SN3866; ConvF(9.03, 9.03, 9.03); Calibrated: 2012-06-20; ; Electronics: DAE4 Sn1335
Phantom: SAM with CRP_20120521; Type: SAM; Serial: 1679
Measurement SW: DASY52, Version 52.8 (2); SEMCAD X Version 14.6.6 (6477)

Test Date: 2012-12-18; Ambient Temp: 20.2; Tissue Temp: 20.5

Dipole Validation

Area Scan (61x81x1): Measurement grid: dx=15mm, dy=15mm
Zoom Scan (7x7x7)/Cube 0: Measurement grid: dx=5mm, dy=5mm, dz=5mm
Power Drift = -0.03 dB
Peak SAR (extrapolated) = 3.496 mW/g
SAR(1 g) = 2.34 W/kg; SAR(10 g) = 1.54 W/kg



DIGITAL EMC CO., LTD

DUT: Dipole 1900 MHz; Type: D1900V2; Serial: D1900V2 - SN:5d029

Communication System: CW; Frequency: 1900 MHz; Duty Cycle: 1:1

Medium parameters used: $f = 1900$ MHz; $\sigma = 1.387$ mho/m; $\epsilon_r = 39.408$; $\rho = 1000$ kg/m³

Phantom section: Flat Section

DASY4 Configuration:

Probe: EX3DV4 - SN3866; ConvF(7.76, 7.76, 7.76); Calibrated: 2012-06-20; ; Electronics: DAE4 Sn1335

Phantom: SAM with CRP_20120521; Type: SAM; Serial: 1679

Measurement SW: DASY52, Version 52.8 (2); SEMCAD X Version 14.6.6 (6477)

Test Date: 2012-12-19; Ambient Temp: 20.7; Tissue Temp: 21.1

Dipole Validation

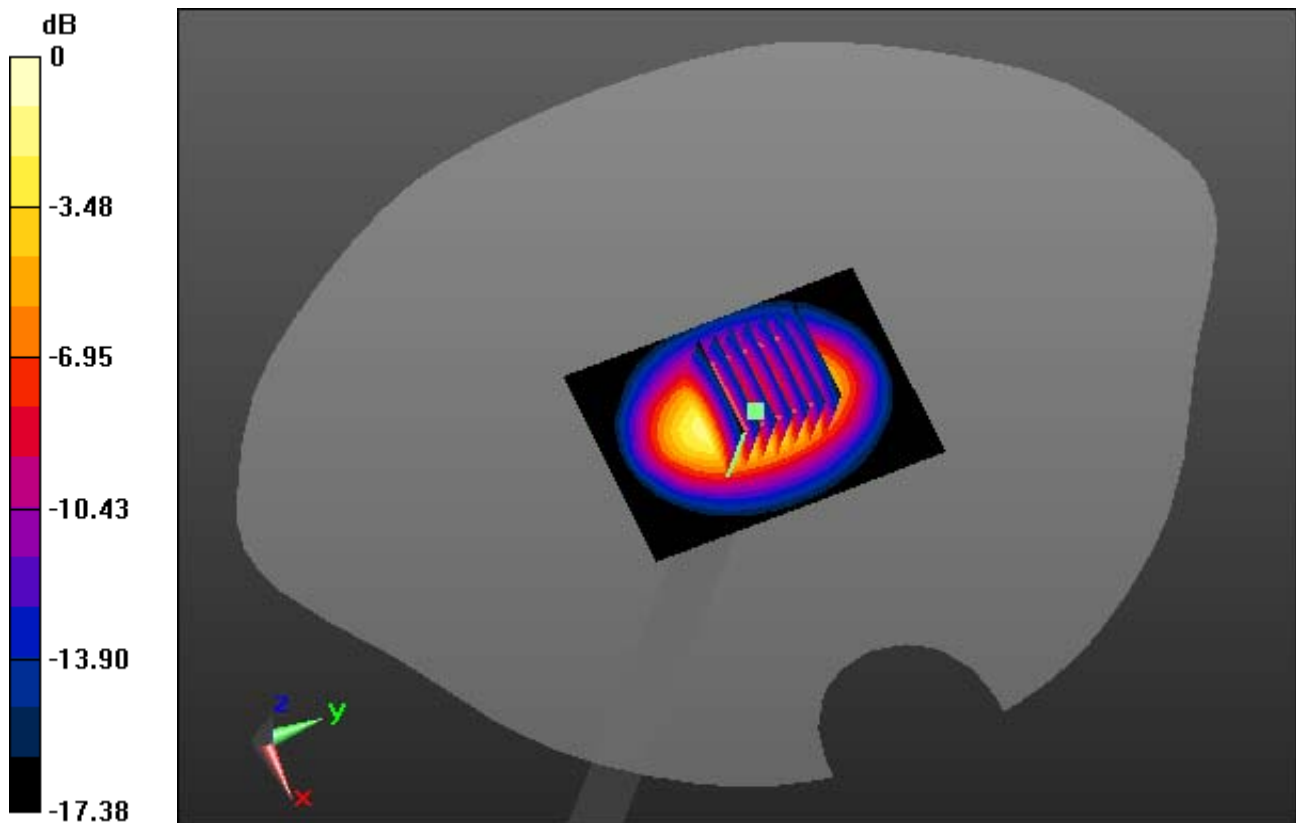
Area Scan (61x91x1): Measurement grid: dx=10mm, dy=10mm

Zoom Scan (7x7x7)/Cube 0: Measurement grid: dx=5mm, dy=5mm, dz=5mm

Power Drift = 0.02 dB

Peak SAR (extrapolated) = 17.657 mW/g

SAR(1 g) = 9.46 W/kg; SAR(10 g) = 4.93 W/kg



0 dB = 12.9 mW/g

DIGITAL EMC CO., LTD

DUT: Dipole 1900 MHz; Type: D1900V2; Serial: D1900V2 - SN:5d029

Communication System: CW; Frequency: 1900 MHz; Duty Cycle: 1:1

Medium parameters used: $f = 1900$ MHz; $\sigma = 1.387$ mho/m; $\epsilon_r = 39.408$; $\rho = 1000$ kg/m³

Phantom section: Flat Section

DASY4 Configuration:

Probe: EX3DV4 - SN3866; ConvF(7.76, 7.76, 7.76); Calibrated: 2012-06-20; ; Electronics: DAE4 Sn1335

Phantom: SAM with CRP_20120521; Type: SAM; Serial: 1679

Measurement SW: DASY52, Version 52.8 (2); SEMCAD X Version 14.6.6 (6477)

Test Date: 2012-12-19; Ambient Temp: 20.7; Tissue Temp: 21.1

Dipole Validation

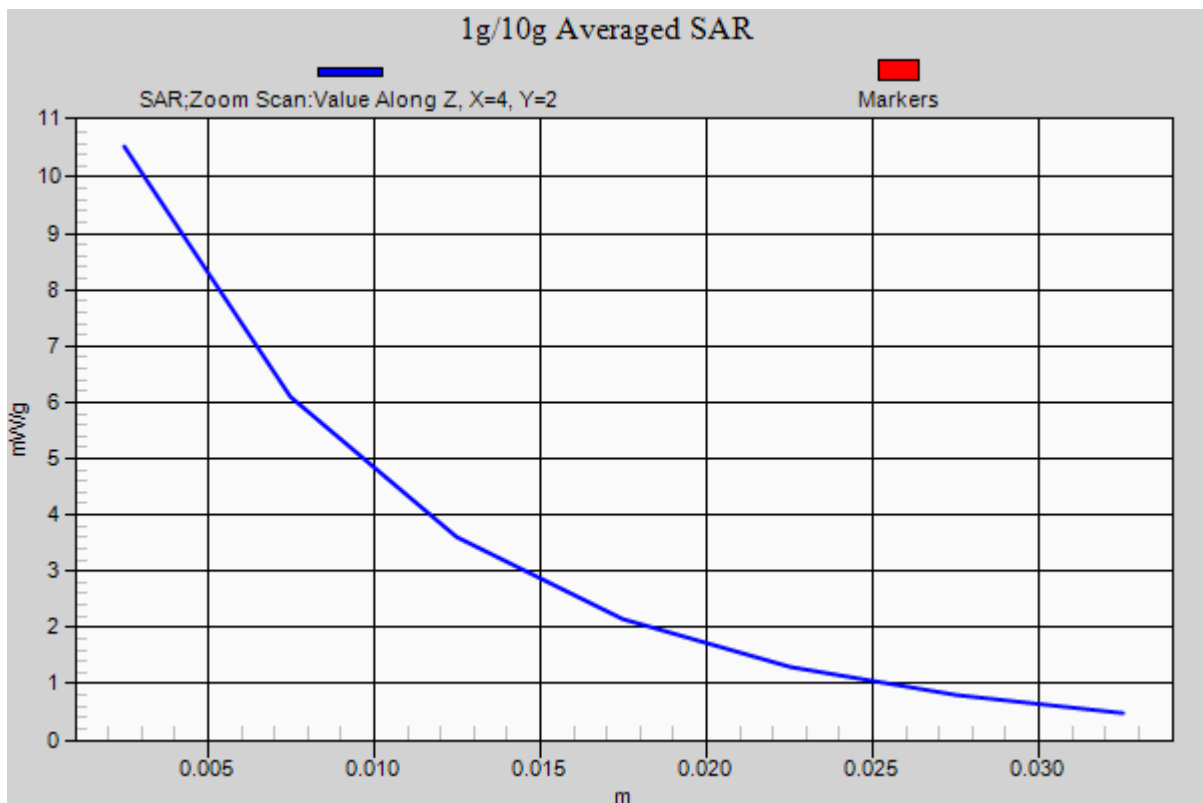
Area Scan (61x91x1): Measurement grid: dx=10mm, dy=10mm

Zoom Scan (7x7x7)/Cube 0: Measurement grid: dx=5mm, dy=5mm, dz=5mm

Power Drift = 0.02 dB

Peak SAR (extrapolated) = 17.657 mW/g

SAR(1 g) = 9.46 W/kg; SAR(10 g) = 4.93 W/kg



DIGITAL EMC CO., LTD

DUT: Dipole 1900 MHz; Type: D1900V2; Serial: D1900V2 - SN:5d029

Communication System: CW; Frequency: 1900 MHz; Duty Cycle: 1:1

Medium parameters used: $f = 1900$ MHz; $\sigma = 1.526$ mho/m; $\epsilon_r = 53.45$; $\rho = 1000$ kg/m³

Phantom section: Flat Section

DASY5 Configuration:

Probe: EX3DV4 - SN3866; ConvF(7.34, 7.34, 7.34); Calibrated: 2012-06-20; ; Electronics: DAE4 Sn1335

Phantom: SAM with CRP_20120521; Type: SAM; Serial: 1679

Measurement SW: DASY52, Version 52.8 (2); SEMCAD X Version 14.6.6 (6477)

Test Date: 2012-12-20; Ambient Temp: 21.5; Tissue Temp: 21.7

Dipole Validation

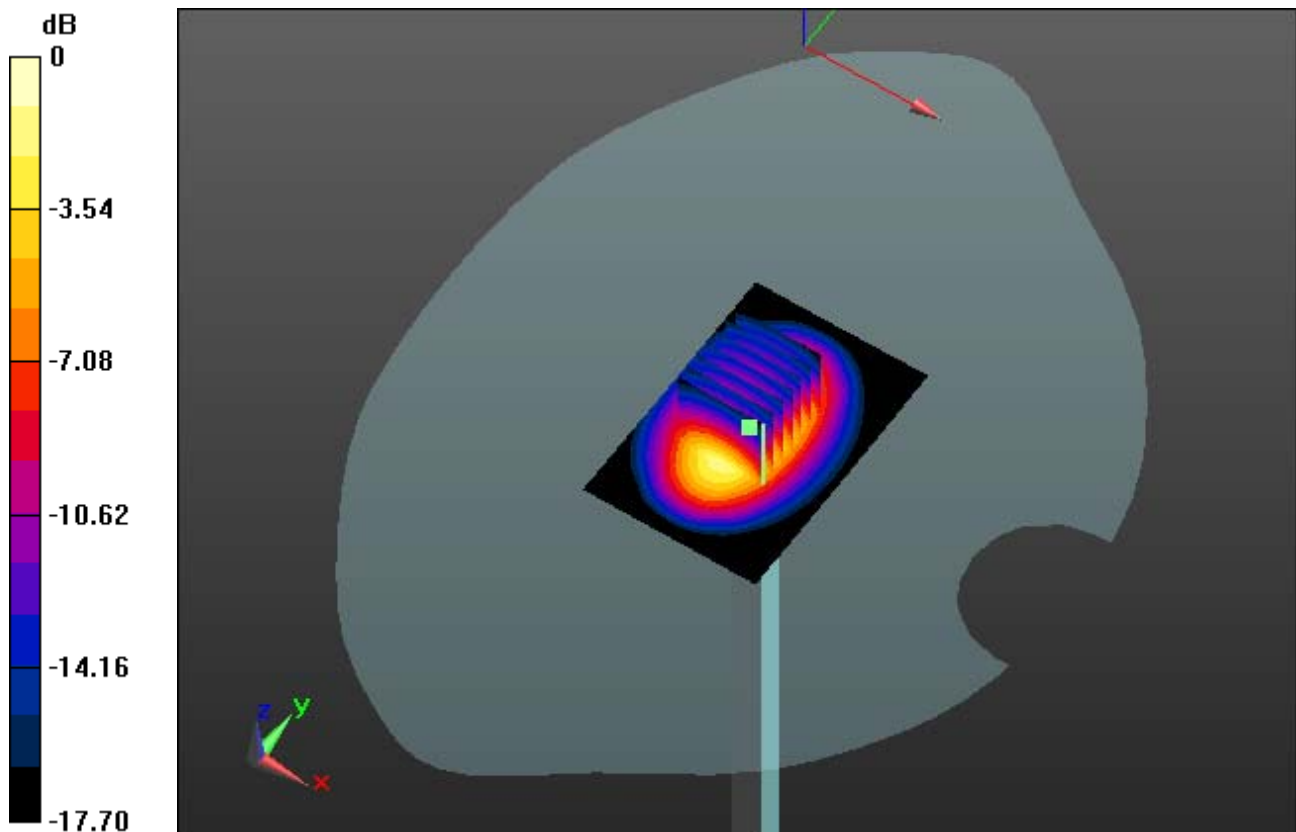
Area Scan (61x91x1): Measurement grid: dx=10mm, dy=10mm

Zoom Scan (7x7x7)/Cube 0: Measurement grid: dx=5mm, dy=5mm, dz=5mm

Power Drift = 0.03 dB

Peak SAR (extrapolated) = 18.043 mW/g

SAR(1 g) = 9.59 W/kg; SAR(10 g) = 4.93 W/kg



0 dB = 13.1 mW/g

DIGITAL EMC CO., LTD

DUT: Dipole 1900 MHz; Type: D1900V2; Serial: D1900V2 - SN:5d029

Communication System: CW; Frequency: 1900 MHz; Duty Cycle: 1:1
Medium parameters used: $f = 1900$ MHz; $\sigma = 1.526$ mho/m; $\epsilon_r = 53.45$; $\rho = 1000$ kg/m³
Phantom section: Flat Section

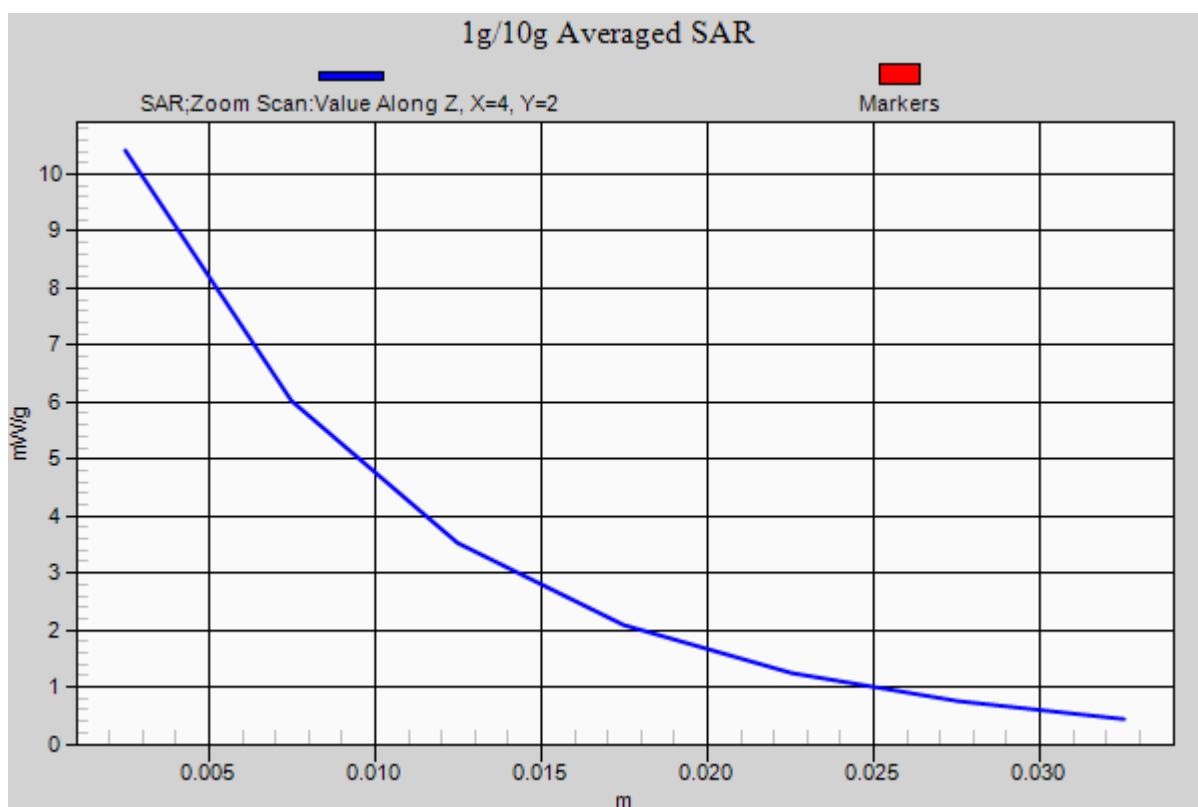
DASY5 Configuration:

Probe: EX3DV4 - SN3866; ConvF(7.34, 7.34, 7.34); Calibrated: 2012-06-20; ; Electronics: DAE4 Sn1335
Phantom: SAM with CRP_20120521; Type: SAM; Serial: 1679
Measurement SW: DASY52, Version 52.8 (2); SEMCAD X Version 14.6.6 (6477)

Test Date: 2012-12-20; Ambient Temp: 21.5; Tissue Temp: 21.7

Dipole Validation

Area Scan (61x91x1): Measurement grid: dx=10mm, dy=10mm
Zoom Scan (7x7x7)/Cube 0: Measurement grid: dx=5mm, dy=5mm, dz=5mm
Power Drift = 0.03 dB
Peak SAR (extrapolated) = 18.043 mW/g
SAR(1 g) = 9.59 W/kg; SAR(10 g) = 4.93 W/kg



DIGITAL EMC CO., LTD

DUT: Dipole 2450 MHz; Type: D2450V2; Serial: D2450V2 - SN:726

Communication System: CW; Frequency: 2450 MHz; Duty Cycle: 1:1

Medium parameters used: $f = 2450$ MHz; $\sigma = 1.813$ mho/m; $\epsilon_r = 38.141$; $\rho = 1000$ kg/m³

Phantom section: Flat Section

DASY5 Configuration:

Probe: EX3DV4 - SN3866; ConvF(6.98, 6.98, 6.98); Calibrated: 2012-06-20; ; Electronics: DAE4 Sn1335

Phantom: SAM with CRP_20120521; Type: SAM; Serial: 1679

Measurement SW: DASY52, Version 52.8 (2); SEMCAD X Version 14.6.6 (6477)

Test Date: 2013-01-05; Ambient Temp: 21.0; Tissue Temp: 21.3

Dipole Validation

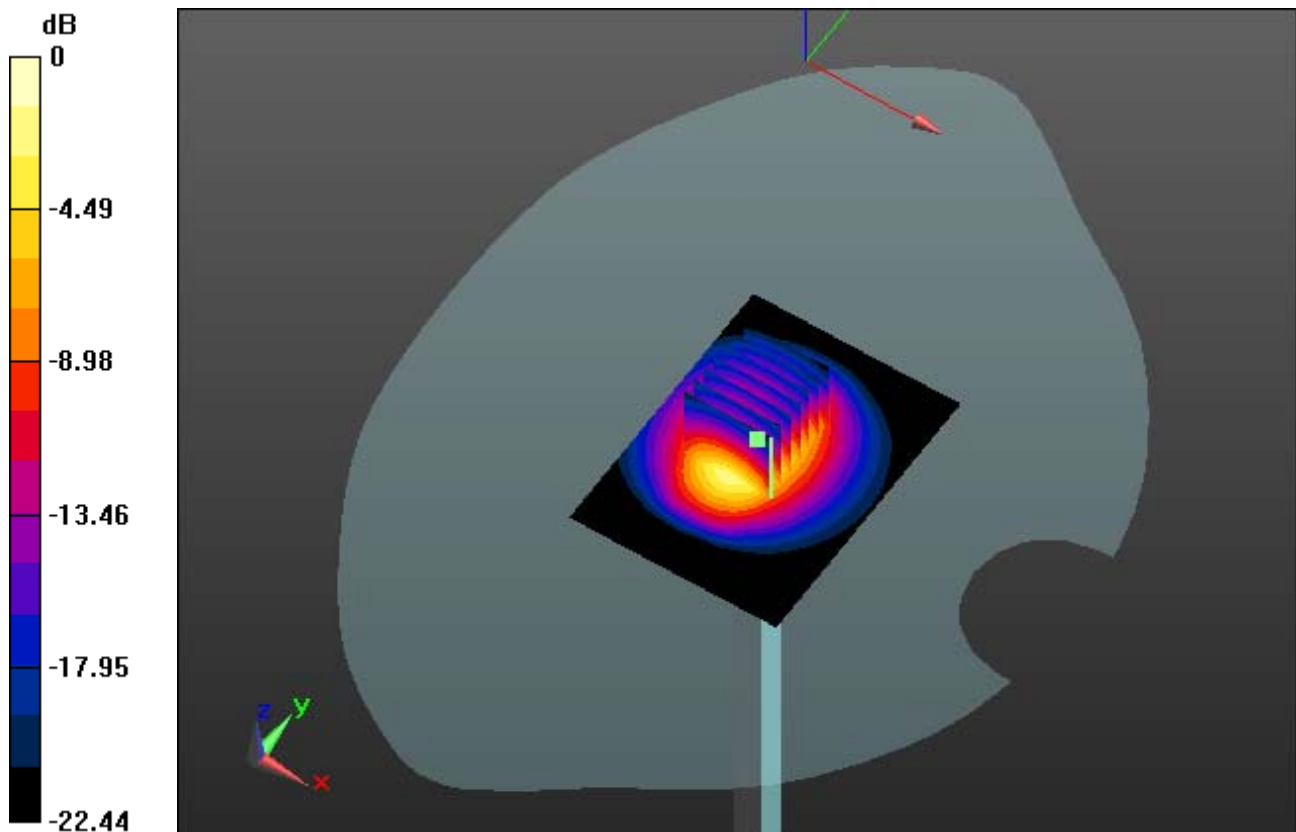
Area Scan (61x81x1): Measurement grid: dx=12mm, dy=12mm

Zoom Scan (7x7x7)/Cube 0: Measurement grid: dx=5mm, dy=5mm, dz=5mm

Power Drift = 0.10 dB

Peak SAR (extrapolated) = 27.018 mW/g

SAR(1 g) = 13.1 W/kg; SAR(10 g) = 6.07 W/kg



0 dB = 19.9 mW/g

DIGITAL EMC CO., LTD

DUT: Dipole 2450 MHz; Type: D2450V2; Serial: D2450V2 - SN:726

Communication System: CW; Frequency: 2450 MHz; Duty Cycle: 1:1

Medium parameters used: $f = 2450$ MHz; $\sigma = 1.813$ mho/m; $\epsilon_r = 38.141$; $\rho = 1000$ kg/m³

Phantom section: Flat Section

DASY5 Configuration:

Probe: EX3DV4 - SN3866; ConvF(6.98, 6.98, 6.98); Calibrated: 2012-06-20; ; Electronics: DAE4 Sn1335

Phantom: SAM with CRP_20120521; Type: SAM; Serial: 1679

Measurement SW: DASY52, Version 52.8 (2); SEMCAD X Version 14.6.6 (6477)

Test Date: 2013-01-05; Ambient Temp: 21.0; Tissue Temp: 21.3

Dipole Validation

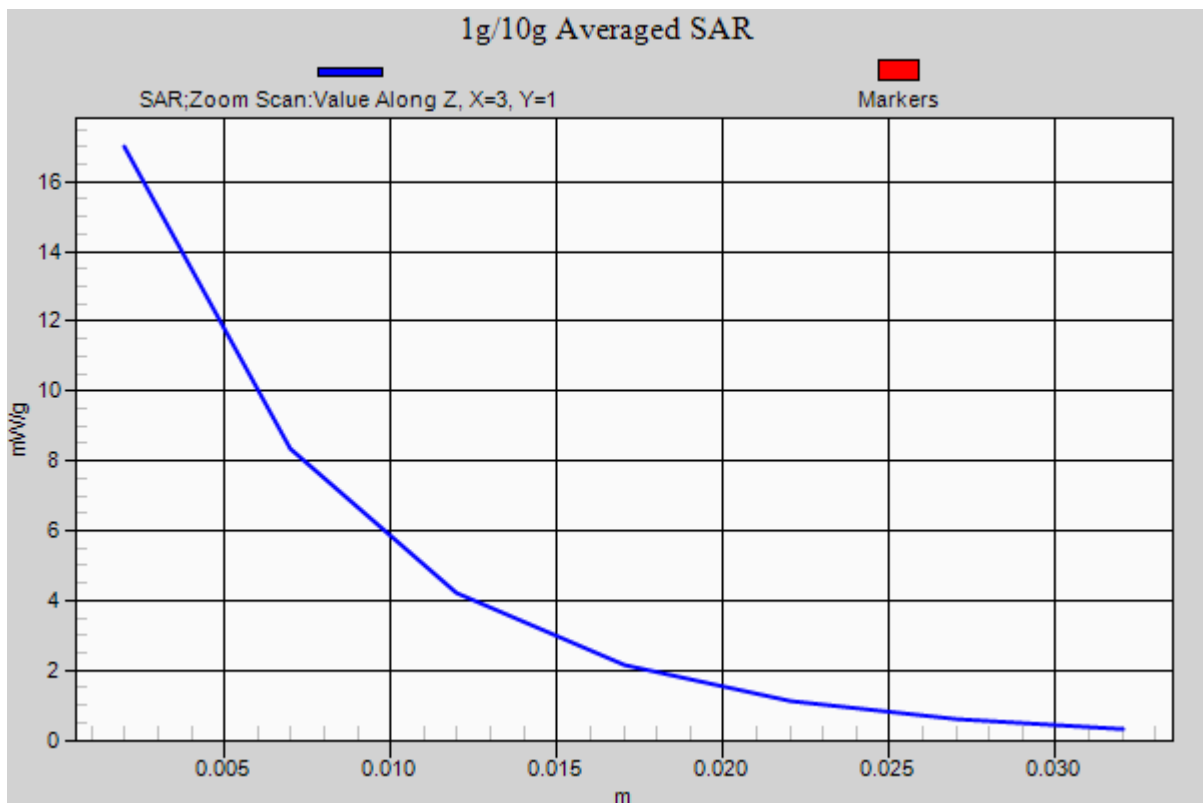
Area Scan (61x81x1): Measurement grid: dx=12mm, dy=12mm

Zoom Scan (7x7x7)/Cube 0: Measurement grid: dx=5mm, dy=5mm, dz=5mm

Power Drift = 0.10 dB

Peak SAR (extrapolated) = 27.018 mW/g

SAR(1 g) = 13.1 W/kg; SAR(10 g) = 6.07 W/kg



DIGITAL EMC CO., LTD

DUT: Dipole 2450 MHz; Type: D2450V2; Serial: D2450V2 - SN:726

Communication System: CW; Frequency: 2450 MHz; Duty Cycle: 1:1

Medium parameters used: $f = 2450$ MHz; $\sigma = 1.971$ mho/m; $\epsilon_r = 54.203$; $\rho = 1000$ kg/m³

Phantom section: Flat Section

DASY5 Configuration:

Probe: EX3DV4 - SN3866; ConvF(6.97, 6.97, 6.97); Calibrated: 2012-06-20; ; Electronics: DAE4 Sn1335

Phantom: SAM with CRP_20120521; Type: SAM; Serial: 1679

Measurement SW: DASY52, Version 52.8 (2); SEMCAD X Version 14.6.6 (6477)

Test Date: 2013-01-05; Ambient Temp: 21.0; Tissue Temp: 21.3

Dipole Validation

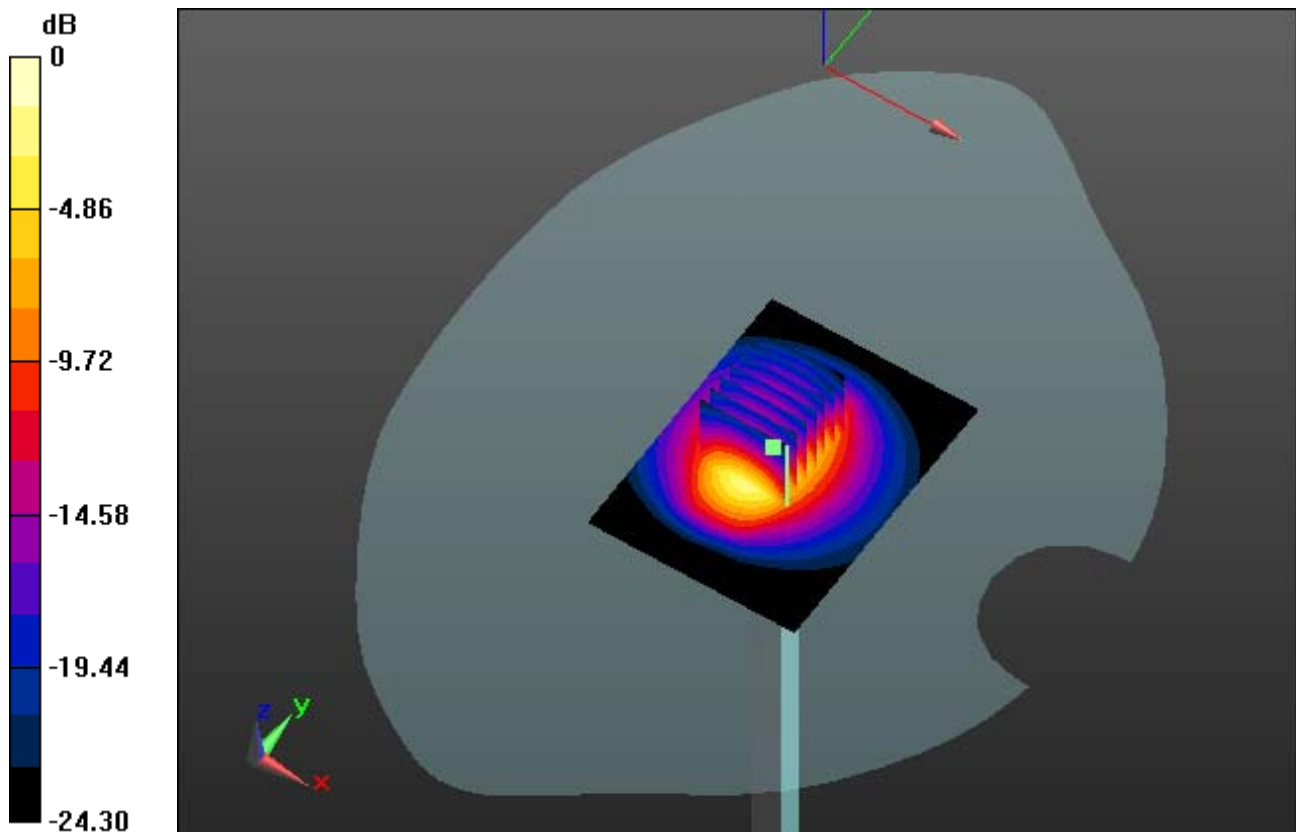
Area Scan (61x81x1): Measurement grid: dx=12mm, dy=12mm

Zoom Scan (7x7x7)/Cube 0: Measurement grid: dx=5mm, dy=5mm, dz=5mm

Power Drift = 0.04 dB

Peak SAR (extrapolated) = 28.891 mW/g

SAR(1 g) = 13 W/kg; SAR(10 g) = 5.75 W/kg



0 dB = 20.4 mW/g

DIGITAL EMC CO., LTD

DUT: Dipole 2450 MHz; Type: D2450V2; Serial: D2450V2 - SN:726

Communication System: CW; Frequency: 2450 MHz; Duty Cycle: 1:1

Medium parameters used: $f = 2450$ MHz; $\sigma = 1.971$ mho/m; $\epsilon_r = 54.203$; $\rho = 1000$ kg/m³

Phantom section: Flat Section

DASY5 Configuration:

Probe: EX3DV4 - SN3866; ConvF(6.97, 6.97, 6.97); Calibrated: 2012-06-20; ; Electronics: DAE4 Sn1335

Phantom: SAM with CRP_20120521; Type: SAM; Serial: 1679

Measurement SW: DASY52, Version 52.8 (2); SEMCAD X Version 14.6.6 (6477)

Test Date: 2013-01-05; Ambient Temp: 21.0; Tissue Temp: 21.3

Dipole Validation

Area Scan (61x81x1): Measurement grid: dx=12mm, dy=12mm

Zoom Scan (7x7x7)/Cube 0: Measurement grid: dx=5mm, dy=5mm, dz=5mm

Power Drift = 0.04 dB

Peak SAR (extrapolated) = 28.891 mW/g

SAR(1 g) = 13 W/kg; SAR(10 g) = 5.75 W/kg

