



**LG**

Life's Good

ENGLISH

User Guide

**LG-E410f**





ENGLISH

# User Guide

- Screen displays and illustrations may differ from those you see on an actual phone.
- Some of the contents of this guide may not apply to your phone, depending on the software and your service provider. All information in this document is subject to change without notice.
- This handset is not suitable for people who are visually impaired, due to the touch screen keyboard.
- Copyright ©2013 LG Electronics, Inc. All rights reserved. LG and the LG logo are registered trademarks of LG Group and its related entities. All other trademarks are the property of their respective owners.
- Google™, Google Maps™, Gmail™, YouTube™ and Play Store™ are trademarks of Google, Inc.



# Table of contents

<b>For your safety</b> .....	5	Quick Settings .....	40
<b>Safety instructions</b> .....	12	Indicator icons on the Status Bar .....	41
<b>Important notice</b> .....	20	Onscreen keyboard.....	42
<b>Getting to know your phone</b> .....	25	Entering accented letters.....	42
Phone overview .....	25	<b>Google account setup</b> .....	43
Installing the SIM card and battery.....	27	<b>Connecting to Networks and Devices</b> ....	44
Charging your phone .....	29	Wi-Fi .....	44
Reducing the battery consumption.....	31	Connecting to Wi-Fi networks .....	44
Using the memory card.....	31	Turning Wi-Fi on and connecting to a Wi-Fi network.....	44
Locking and unlocking the screen.....	33	Bluetooth.....	45
<b>Your Home screen</b> .....	34	Sharing your phone's data connection ...	46
Touch screen tips .....	34	PC connections with a USB cable.....	48
Home screen .....	35	<b>Calls</b> .....	50
Home Screen Overview .....	35	Making a call .....	50
Navigating Through the Home Screens..	35	Calling your contacts .....	50
Navigating Through the Application		Answering and rejecting a call .....	50
Menu .....	36	Adjusting the in-call volume.....	51
Navigating Through the Sub-Menus .....	36	Making a second call.....	51
<b>Customizing the Screen</b> .....	37	Viewing your call logs .....	51
Changing the Wallpaper of Home screen...	37	Call settings.....	52
Creating Shortcuts on Home screen.....	37	<b>Contacts</b> .....	53
Adding and Removing Widgets on Home screen .....	38	Searching for a contact.....	53
Customizing the Apps Menu screen .....	39	Adding a new contact.....	53
<b>Returning to recently-used applications.</b>	39	Favorite contacts .....	53
<b>Notifications</b> .....	39	Creating a group.....	54
Swipe down for notifications & settings.	40	<b>Messaging</b> .....	55
		Sending a message .....	55

Threaded box .....	56	<b>Multimedia.....</b>	<b>71</b>
Changing your message settings .....	56	Gallery.....	71
<b>E-mail.....</b>	<b>57</b>	Viewing pictures .....	71
Managing an email account.....	57	Playing videos .....	72
Working with account folders.....	57	Editing photos.....	72
Composing and sending email .....	58	Deleting images.....	72
<b>Camera.....</b>	<b>59</b>	Setting as wallpaper .....	72
Getting to know the viewfinder .....	59	Videos .....	72
Using the advanced settings .....	60	Playing a video .....	73
Taking a quick photo .....	61	<b>Music .....</b>	<b>73</b>
Once you've taken a photo.....	61	Add music files to your phone.....	73
Viewing your saved photos .....	63	Transfer music using Media sync (MTP) .....	74
<b>Video camera .....</b>	<b>64</b>	Playing a song.....	74
Getting to know the viewfinder .....	64	<b>Utilities .....</b>	<b>76</b>
Using the advanced settings .....	65	Setting your alarm .....	76
Recording a quick video.....	65	Using your calculator .....	76
After recording a video.....	66	Adding an event to your calendar.....	76
Watching your saved videos .....	66	Voice Recorder .....	77
Adjusting the volume when viewing a video .....	66	Recording a sound or voice .....	77
<b>LG Unique Function.....</b>	<b>67</b>	Sending the voice recording .....	77
QuickMemo function.....	67	Tasks.....	78
Using the QuickMemo options .....	68	Polaris Viewer 4 .....	78
Viewing the saved QuickMemo .....	68	Google+ .....	78
LG SmartWorld .....	69	Voice Search.....	79
How to Get to LG SmartWorld from Your Phone .....	69	Downloads .....	79
How to use LG SmartWorld.....	69	<b>The Web .....</b>	<b>80</b>
		Internet.....	80
		Using the Web toolbar .....	80
		Viewing webpages.....	80
		Opening a page .....	81

# Table of contents

Searching the Web by voice.....	81
Bookmarks.....	81
History.....	81
<b>Chrome.....</b>	<b>81</b>
Viewing webpages.....	81
Opening a page.....	82
Searching the Web by voice.....	82
Syncing with other devices.....	82
<b>Settings.....</b>	<b>83</b>
Accessing the Settings menu.....	83
WIRELESS & NETWORKS.....	83
DEVICE.....	85
PERSONAL.....	87
SYSTEM.....	88
<b>PC software (LG PC Suite).....</b>	<b>90</b>
<b>Phone software update.....</b>	<b>93</b>
Phone software update.....	93
<b>About this user guide.....</b>	<b>95</b>
About this user guide.....	95
Trademarks.....	95
<b>Accessories.....</b>	<b>96</b>
<b>Troubleshooting.....</b>	<b>97</b>
<b>FAQ.....</b>	<b>101</b>

# For your safety

## Important Information

This user's guide contains important information about the use and operation of this phone. Read all information carefully for optimal performance and to avoid any damage or misuse of the phone. Any changes or modifications not expressly approved in this user's guide could void your warranty for this equipment.

## Before you begin

### Safety Guidelines

#### **WARNING**

To reduce the possibility of electric shock, do not expose your product to high humidity areas, such as bathroom or swimming pool.

Keep the phone away from heat. Never store your phone in environment that may expose it to temperatures below 0°C or above 40°C, such as outdoor during snowstorm, or in your car in hot days. Exposure to cold or heat will result in malfunction, damage or permanent failure. Be careful when using your phone near other electronic devices. The RF emissions from mobile phones may affect nearby electronic equipment that not adequately shielded. You should consult manufacturers of any personal medical devices, as in the case of pacemakers and hearing aides, to determine whether they are susceptible to interference from cell phones.

Turn off your phone in medical facilities or at gas stations. Never place your phone in microwaves, as it will cause the battery to explode.

**Important!** Before using your phone, please read the SAFETY INFORMATION OF THE TELECOMMUNICATIONS INDUSTRY ASSOCIATION (TIA).

### Safety Information

Read these simple guidelines. Breaking the rules may be illegal or dangerous.

More detailed information is provided in this user's guide.

- Never use an unapproved battery that could cause damages to the phone or the battery itself, or even explode.
- Never place your phone in a microwave oven, as this will result in an explosion of the battery.
- Do not dispose of your battery in fire or with hazardous or flammable materials.
- Make sure the battery does not come into contact with sharp-edged items, such as animal teeth or claws. This could cause a fire.
- Store the battery in a place out of the reach of children.
- Be careful so that children do not swallow any parts of the phone, such as rubber plugs (earpiece, parts that connect to the phone, etc.). This could cause asphyxiation or suffocation.
- Disconnect the plug and charger from the outlet when the phone shows that the battery has been fully charged, because it may cause electric shock or fire hazard.
- When in the car, do not leave your phone, or install a hands-free kit, near the airbag. If wireless equipment is improperly installed, you can be seriously injured if the airbag is deployed.
- Do not use mobile phone while driving.
- Do not use the phone in areas where its usage is prohibited. (For example: in airplanes).
- Do not expose the battery charger or adapter to direct sunlight, or use it in places with high humidity, such as bathroom.



- Never store your phone in temperatures lower than -20°C or higher than 50°C.
- Do not use harsh chemicals (such as alcohol, benzene, solvents, etc.) or detergents to clean the phone. This could cause fire.
- Do not drop the phone, strike it, or shake it hard. Such actions may harm the phone's internal circuit boards.
- Do not use your phone in high explosive areas, as this may generate sparks.
- Do not damage the power cord by bending, twisting, pulling, or heating it. Do not use the plug if it is loose as it may cause fire or electric shock.
- Do not handle the phone with wet hands while it is charging. This can cause electric shock or seriously damage your phone.
- Do not disassemble the phone.
- Do not make or answer calls while charging the phone, which can cause a short circuit, electric shock, or fire.
- Use only batteries and chargers provided by LG. The warranty does not apply to products provided by other providers.
- Only authorized personnel should service the phone and its accessories. Installation or service may result in accidents and consequently invalidate the warranty.
- Do not hold or let the antenna come in contact with your body during a call.
- Emergency calls can be made only within a service area. To make an emergency call, make sure you are within a service area and the phone is on.
- Use your accessories, such as headphones or headsets, with caution, ensuring that the cables are plugged properly and that they do not touch the antenna unnecessarily.

## For your safety

### Information about the RF exposure from FCC



#### **WARNING**

Read this information before operating the phone.

In August 1996, the Federal Communications Commission (FCC) of the United States, with its action in Report and Order FCC 96-326, adopted an updated safety standard for human exposure to radio frequency (RF) electromagnetic energy emitted by FCC regulated transmitters. Those guidelines are consistent with the safety standard previously set by both international and U.S. standards. The design of this phone complies with FCC guidelines and these international standards.

### Caution

Use only the supplied antenna. Use of unauthorized antennas, or modifications, could impair call quality, damage the phone, void your warranty, or result in a violation of FCC regulations.

Do not use the phone with a damaged antenna.

A damaged antenna in contact with the skin could cause a singe. Contact your local dealer for an antenna replacement.

## Battery Precautions

- Do not disassemble.
- Do not short-circuit.
- Do not expose to high temperatures, over 60 °C (140 °F).
- Do not incinerate.

### Battery Disposal

- Please dispose off your battery properly, or bring it to your wireless provider for recycling.
- Do not dispose off your battery in fire or with hazardous or flammable materials.

### Adapter Precautions (Charger)

- Using the wrong battery charger could damage your phone and void your warranty.
- The adapter or battery charger is only designed for indoor use.
- Do not expose the battery charger or adapter to direct sunlight, or use it in places with high humidity, such as the bathroom.

### Cautions for Battery

- Do not disassemble or open crush, bend or deform, puncture or shred.
- Do not modify or remanufacture, attempt to insert foreign objects into the battery, immerse or expose to water or other liquids, expose to fire, explosion or other hazard.
- Only use the battery for the system for which it is specified.
- Only use the battery with a charging system that has been qualified with the system per this standard. Use of an unqualified battery or charger may present a risk of fire, explosion, leakage, or other hazard.
- Do not short circuit a battery or allow metallic conductive objects to contact battery terminals.
- Replace the battery only with another battery that has been qualified with the system per this standard, IEEE-Std-1725-200x. Use of an unqualified battery may present a risk of fire, explosion, leakage or other hazard.

- Promptly dispose of used batteries in accordance with local regulations.
- Battery usage by children should be supervised.
- Avoid dropping the phone or battery. If the phone or battery is dropped, especially on a hard surface, and the user suspects damage, take it to a service center for inspection.
- Improper battery use may result in a fire, explosion or other hazard.
- For those host devices that utilize a USB port as a charging source, the host device's user manual shall include a statement that the phone shall only be connected to products that bear the USB-IF logo or have completed the USB-IF compliance program.
- Always unplug the charger from the wall socket after the phone is fully charged to save unnecessary power consumption of the charger.

## **Avoid damage to your ear**

- Damage to your hear can occur due to constant exposure to excessive high sound. We, therefore, recommend that you do not turn on or off the phone near your ear. We also recommend you be reasonable with the music and volume level.
- If you listen to music, please ensure that the volume level is adequate, so that you are aware of your surroundings. This is particularly important when attempting to cross a street.

# Safety instructions

## TIA's Safety Information

This includes complete security information on wireless phones from TIA (Telecommunications Industry Association).

It's required, for CTIA Certification, the inclusion in the user manual of text covering pacemakers, hearing aids and other medical devices. It's encouraged the use of the remaining TIA language when relevant.

## Exposure to Radio Frequency Signal

Your wireless handheld portable telephone is a low power radio transmitter and receiver. When it is ON, it receives and also sends out radio frequency (RF) signals.

In August, 1996, the Federal Communications Commissions (FCC) adopted RF exposure guidelines with safety levels for handheld wireless phones. Those guidelines are consistent with the safety standards previously set by both U.S. and international standards bodies:

ANSI C95.1 (1992) \*

NCRP Report 86 (1986)

ICNIRP (1996)

Those standards were based on comprehensive and periodic evaluations of the relevant scientific literature. For example, over 120 scientists, engineers, and physicians from universities, government health agencies, and industry reviewed the available body of research to develop

the ANSI Standard (C95.1).

\* American National Standards Institute; National Council on Radiation Protection and Measurements; International Commission on Non-Ionizing Radiation Protection.

The design of your phone complies with the FCC guidelines (and those standards).

## Antenna Care

Use only the supplied or an approved replacement antenna. Unauthorized antennas, modifications, or attachments could damage the phone and may violate FCC regulations.

## Phone Operation

**NORMAL POSITION:** Hold the phone as you would any other telephone with the antenna pointed up and over your shoulder.

## Suggestions for a more efficient operation

For your phone to operate most efficiently:

- Do not touch the antenna unnecessarily, when the phone is in use. The contact with the antenna affects call quality, and may cause the phone to operate at a higher power level than otherwise would be need.

## Driving

Check the laws and regulations related to the use of wireless phones in the areas where you drive. Always obey these regulations. Also, if using your phone while driving, make sure to:

- Pay full attention to driving; driving safely is your first responsibility;
- Use hands-free operation, if available;
- Pull off the road and park, before making or answering a call, if driving conditions demand so.

# Safety instructions

## Electronic Devices

Most modern electronic equipment is shielded from RF signals.

However, certain electronic equipment may not be shielded against the RF signals from your wireless phone.

## Pacemaker

The Medical Industry Manufacturers Association recommends a minimum distance of fifteen (15) centimeters, or six (6) inches, between a handheld wireless phone and a pacemaker, in order to avoid potential interference between them.

These advices are consistent with independent researches, and with recommendations based on wireless technology research.

People with pacemakers should:

- ALWAYS keep the phone at least fifteen centimeters (six inches) from their pacemaker, whenever the phone is turned on;
- Do not carry the phone in shirt pocket;
- Use the ear opposite to the pacemaker, to minimize the potential interference;
- If you have any reason to suspect that interference is taking place, switch off your phone immediately.

## Hearing Aids

Some digital wireless phones may interfere with some hearing aids. In the event of such interference, we recommend that you contact your service provider.



## Other Medical Devices

If you use any other personal medical devices, consult your device manufacturer to determine if they are adequately shielded from external RF energy. Your doctor can help you obtain this information.

## Health Care Facilities

Turn off your phone in health care facilities, whenever there are signs asking you to do so. Hospitals or health care facilities may use equipment that could be sensitive to external RF energy.

## Vehicles

RF signals may affect improperly installed or inadequately shielded devices in motor vehicles.

Check with the manufacturer, or its representative, regarding your vehicle.

You should also consult the manufacturer about any equipment that has been added to your vehicle.

## Facilities with signs

Turn off the phone in any facility where warning signs request you to do so.

## Airplanes

FCC regulations prohibit the use of phones while in the air. Turn off your phone before boarding an airplane.

# Safety instructions

## Blasting Areas

To avoid interfering with blasting operations, turn your phone off when in a 'blasting area' or in areas with signs that read: 'Turn off two-way radios' . Obey all signs and instructions.

## Potentially Explosive Atmosphere

Turn off the phone when in an area with a potentially explosive atmosphere, and obey all signs and instructions.

Sparks in such areas could cause an explosion or fire that could result in personal injury or death.

Areas with a potentially explosive atmosphere are often clearly marked, but not always. Among the potentially dangerous areas are:

Fueling areas (such as gas stations), areas below deck on boats, facilities where chemical products are transferred or stored, vehicles using liquefied petroleum gas (as propane or butane), areas where the air contains chemicals or particles (such as grain, dust or metal powders), and any other areas where you would normally be advised to turn off your vehicle engine.

## For vehicles equipped with air bags

Air bags inflate with strong force. Do not place objects in the area over the air bag or in its deployment area, including wireless equipment, either installed or portable.

Serious injuries could occur if wireless equipment is improperly installed into the car when the air bag inflates.

## Safety Information

Read and observe the following information for the safe and proper use of your phone, and to prevent any damage.

Also, keep the user's guide in an accessible place at all times after reading it.

## Charger, Adapter and Battery Security

- The charger and adapter are designed only for indoor use.
- Dispose of your battery properly, or bring it to your wireless provider for recycling.
- The battery doesn't need to be fully discharged before recharging.
- Only use LG approved chargers that are specifically made for your phone model, since they are designed to maximize the battery life.
- Do not disassemble or short-circuit it.
- Keep the metal contacts on the battery clean.
- Replace the battery when it no longer provides acceptable performance. The battery can be recharged several hundred times before replacement.
- Charge the battery after long periods without use to maximize its life.
- The battery life will vary depending on usage patterns and environmental conditions.
- Intensive use of backlighting, browser, and packet data connectivity affect battery life and talk/standby times.
- The role of self-protection interrupts the phone when its operation is in an abnormal state. In this case, remove the battery from the phone, reinstall it, and turn on the phone.

# Safety instructions

## Explosion, Shock and Fire Danger

- Do not place the phone in a place exposed to excessive dust, and keep the minimum required distance between the power cord and heat sources.
- Unplug the power cord before cleaning the phone, and clean the power plug whenever it is dirty.
- When using the power plug, make sure it is firmly connected. Otherwise, it can overheat or start a fire.
- Placing the phone in a pocket or bag without covering the receptacle (power plug pin), metallic articles (such as a coin, clip or pen) may short-circuit the phone. Always cover the receptacle when not in use.
- Do not short-circuit the battery. Metal items, such as coins, paper clips, or pens, in your pocket or bag may cause a short-circuit between the + and - terminals of the battery (metal strips on the battery). The short-circuit of the terminals may damage the battery and cause an explosion.

## General Notice

- Using a damaged battery, or inserting it into the mouth can cause serious injuries.
- Do not place the phone in proximity to items containing magnetic components, such as credit cards, calling cards, bank books, or subway tickets. The phone magnetism may damage the data stored in the magnetic strip.
- Talking on the phone for a long period of time may reduce call quality, because of the heat generated during use.
- When the phone has not been in use for a long time, store it in a safe place, with the power cord unplugged.
- Using the phone close to a receiving equipment (such as TV or radio) may cause interference.

- Do not use the phone if the antenna is damaged. If a damaged antenna contacts skin, it may cause a slight singe. Contact an LG Authorized Service Facility to replace the damaged antenna.
- Do not immerse your phone in water. If this happens, immediately turn it off and remove the battery. If your phone does not work, take it to an LG Authorized Service Facility.
- The power supply contains elements that could be harmful to your health, if components are handled directly. If this happens, we recommend immediate hand-washing.
- Do not paint the phone.
- Data stored in your phone might be deleted due to careless use, hardware repair or software upgrade. Please backup your important phone numbers (ringtones, text or voice messages, images, and videos might also get deleted). The manufacturer is not liable for damages due to loss of data.
- When using the phone in public places, you may set the ringer on vibrate to avoid disturbing others.
- Do not switch the phone on/off while it is in your ear.

### **Ambient temperatures**

**Max:** +50°C (discharging), +45°C (charging)

**Min:** -10°C

### **Notice: Open Source Software**

To obtain the corresponding source code under GPL, LGPL, MPL and other open source licences, please visit <http://opensource.lge.com/>

All referred licence terms, disclaimers and notices are available for download with the source code.

## Important notice


### Please read this before you start using your phone!

Please check to see whether any problems you encountered with your phone are described in this section before taking the phone for service or calling a service representative.

## 1. Phone memory

When there is less than 10% of space available in your phone memory, your phone cannot receive new messages. You need to check your phone memory and delete some data, such as applications or messages, to make more memory available.

### To uninstall applications:

- 1 Touch  > **Apps** tab > **Settings** > **Apps** from the DEVICE.
- 2 Once all applications appear, scroll to and select the application you want to uninstall.
- 3 Touch **Uninstall**.


## 2. Optimizing battery life

Extend your battery's life between charges by turning off features that you don't need to have running constantly in the background. You can monitor how applications and system resources consume battery power.

### Extending your phone's battery life:


- Turn off radio communications when you are not using. If you are not using Wi-Fi, Bluetooth or GPS, turn them off.
- Reduce screen brightness and set a shorter screen timeout.
- Turn off automatic syncing for Gmail, Calendar, Contacts and other applications.
- Some applications you have downloaded may reduce battery power.

### To check the battery power level:

- Touch  > **Apps** tab > **Settings** > **About phone** from the SYSTEM > **Battery**.

The battery status (charging or discharging) and battery level (percentage charged) is displayed at the top of the screen.

### To monitor and control how battery power is being used:

- Touch  > **Apps** tab > **Settings** > **About phone** from the SYSTEM > **Battery** > **Battery use**.

Battery usage time is displayed on the screen. It tells you how long it has been since you last connected your phone to a power source or, if currently connected, how long the phone was last running on battery power. The screen shows the applications or services using battery power, listed in order from the greatest to smallest amount used.

## 3. Before installing an open source application and OS

### **WARNING**


If you install and use an OS other than the one provided by the manufacturer it may cause your phone to malfunction. In addition, your phone will no longer be covered by the warranty.

### **WARNING**

To protect your phone and personal data, only download applications from trusted sources, such as Play Store™. If there are improperly installed applications on your phone, the phone may not work normally or a serious error may occur. You must uninstall those applications and all associated data and settings from the phone.

## Important notice

### 4. Using an unlock pattern

Set an unlock pattern to secure your phone. Touch  > **Apps** tab > **Settings** > **Lock screen** from DEVICE > **Select screen lock** > **Pattern**. This opens a screen that will guide you through how to draw a screen unlock pattern. You have to create a Backup PIN as a safety measure in case you forget your unlock pattern.

**Caution:** Create a Google account before setting an unlock pattern and remember the Backup PIN you created when creating your pattern lock.



#### WARNING

##### Precautions to take when using pattern lock.

It is very important to remember the unlock pattern you set. You will not be able to access your phone if you use an incorrect pattern 5 times. You have 5 opportunities to enter your unlock pattern, PIN or password. If you have used all 5 opportunities, you can try again after 30 seconds.

#### When you can't recall your unlock Pattern, PIN or Password:

##### < If you have forgotten your pattern >

If you logged in to your Google account on the phone but failed to enter the correct pattern 5 times, touch the **Forgot pattern?** button at the bottom of the screen. You are then required to log in with your Google Account or you have to enter the Backup PIN you entered when creating your Pattern Lock.

If you have not created a Google account on the phone or you forgot Backup PIN, you have to perform a hard reset.

##### < If you have forgotten your PIN or Password >

If you forget your PIN or Password, you will need to perform a hard reset.

**Caution:** If you perform a hard reset, all user applications and user data will be deleted.

**NOTE:** If you have not logged into your Google Account and have forgotten your Unlock Pattern, you will need to enter your Backup PIN.



## 5. Using the Hard Reset (Factory reset)

If your phone does not restore to its original condition, use a Hard Reset (Factory Reset) to initialize it.

- 1 Power off the phone.
- 2 Press and hold the **Power/Lock key + Volume Down key + Home key**.
- 3 When the LG Logo appears on the screen, release all keys.


### WARNING



If you perform a Hard Reset, all user applications, user data and DRM licenses will be deleted. Please remember to backup any important data before performing a Hard Reset.

## 6. Opening and switching applications

Multi-tasking is easy with Android because you can keep more than one application running at the same time. There is no need to quit an application before opening another one. Use and switch between several open applications. Android manages each application, stopping and starting them as needed to ensure that idle applications don't consume resources unnecessarily.


### To stop applications:

- 1 Touch  > **Apps** tab > **Settings** > **Apps** from DEVICE > **RUNNING**.
- 2 Scroll and touch the desired application and touch **Stop** to stop it.

**NOTE:** For multitasking, press the Home  key to move to another app while using an app. This does not stop the previous app running in the background on the device. Make sure to touch the Back  key to exit an app after using it.

## Important notice

### 7. Transferring music, photos and videos using Media sync (MTP)

- 1 Touch  > **Apps** tab > **Settings** > **Storage** from the DEVICE to check out the storage media.
- 2 Connect the phone to your PC using the USB cable.
- 3 A USB connection type list will appear on your phone screen, Select the **Media sync (MTP)** option.
- 4 Open the memory folder on your PC. You can view the mass storage content on your PC and transfer the files.
- 5 Copy the files from your PC to the drive folder.

### 8. Hold your phone upright

Hold your cell phone vertically, as you would a regular phone. Your phone has an internal antenna. Be careful not to scratch or damage the back of the phone, as this may affect performance. When making/receiving calls or sending/receiving data, avoid holding the lower part of the phone where the antenna is located. Doing so may affect call quality.

### 9. When the screen freezes

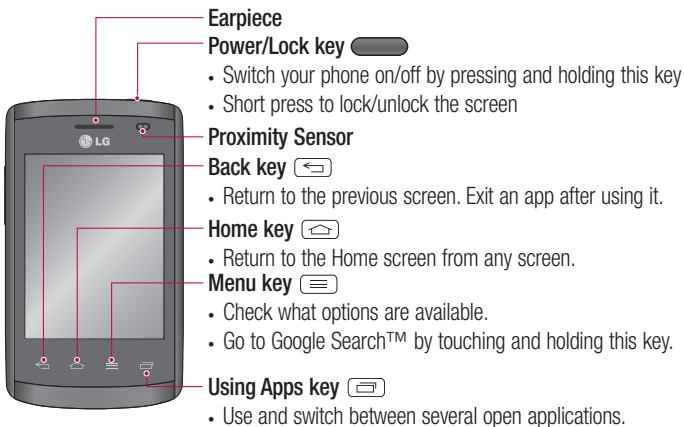
**If the screen freezes or the phone does not respond when you try to operate it:**

Press and hold the **Power/Lock** key for 10 seconds to turn your phone off.

If it still does not work, please contact the service center.

# Getting to know your phone

## Phone overview



### NOTE: Proximity sensor

When receiving and making calls, the proximity sensor automatically turns the backlight off and locks the Touch screen by sensing when the phone is near to your ear. This extends battery life and prevents you from unintentionally activating the Touch screen during calls.

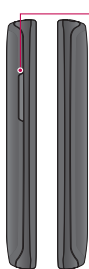
### WARNING

Placing a heavy object on the phone or sitting on it can damage the LCD and Touch screen functions. Do not cover the LCD proximity sensor with protective film. This could cause the sensor to malfunction.

# Getting to know your phone

## WARNING

While in the speaker phone mode(Handsfree mode) the speaker sound might be high, and so to avoid damage to your hearing, do not close the handset to your ear while using speaker phone mode.

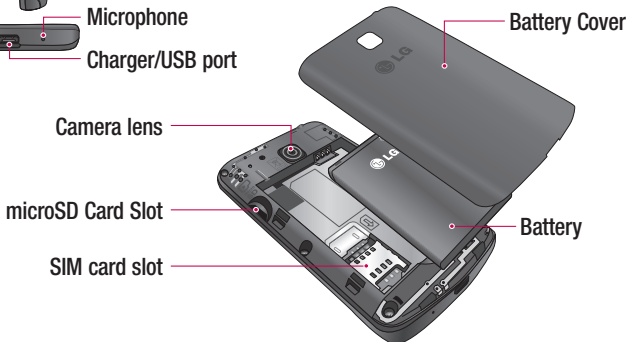


### Volume keys

- **On the Home screen:** Controls ringer volume
- **During a call:** Control your earpiece volume
- **When playing a track:** Controls volume continuously

### TIP! QuickMemo function

Press and hold the Volume Up and Volume Down Keys for one second to use the QuickMemo function.



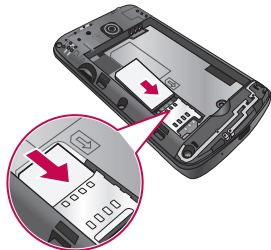
## Installing the SIM card and battery

Before you can start exploring your new phone, you'll need to set it up. To insert the SIM card and battery:

- 1 To remove the battery cover, hold the phone firmly in one hand. With your other hand, lift off the battery cover with your index finger as shown in figure.



- 2 Slide the SIM card into slot as shown in the figure. Make sure the gold contact area on the SIM card is facing downwards.



## Getting to know your phone

- 3 Insert the battery into place by aligning the gold contacts on the phone and the battery (1) and pressing it down until it clicks into place (2).



- 4 Align the battery cover over the battery compartment (1) and press it down until it clicks into place (2).



## Charging your phone

Charge the battery before using it for the first time. Use the charger to charge the battery. A computer can be also used to charge the device by connecting them via the USB cable.

### **WARNING**

Use only LG-approved chargers, batteries, and cables. When using unapproved chargers or cables, it may cause battery charging slowly or pop up the message regarding slow charging. Or, unapproved chargers or cables can cause the battery to explode or damage the device, which are not covered by the warranty.

The charger connector is at the bottom of the phone. Insert the charger and plug it into an electrical outlet.



### **NOTE:**

- The battery must be fully charged initially to improve battery lifetime.
- Do not open the battery cover while your phone is charging.

## Getting to know your phone

### NOTE:

- When the battery power is low, the device emits a warning tone and displays a low battery power message.
- If the battery is completely discharged, the device cannot be turned on immediately when the charger is connected. Allow a depleted battery to charge for a few minutes before turning on the device.
- If you use multiple applications at once, network applications, or applications that need a connection to another device, the battery will drain quickly. To avoid disconnecting from the network or losing power during a data transfer, always use these applications after fully charging the battery.
- The device can be used while it is charging, but it may take longer to fully charge the battery.
- If the device receives an unstable power supply while charging, the touch screen may not function. If this happens, unplug the charger from the device.
- While charging, the device may heat up. This is normal and should not affect the device's lifespan or performance. If the battery gets hotter than usual, the charger may stop charging.

After fully charging, disconnect the device from the charger. First unplug the charger from the device, and then unplug it from the electric socket. Do not remove the battery before removing the charger. This may damage the device.

**NOTE:** To save energy, unplug the charger when not in use. You must unplug the charger from the electric socket when not in use to avoid wasting power. The device should remain close to the electric socket while charging.



## Reducing the battery consumption

Your device provides options that help you save battery power. By customising these options and deactivating features in the background, you can use the device longer between charges:

- Activate power-saving mode.
- When you are not using the device, switch to sleep mode by pressing the Power/lock key.
- Close unnecessary applications with the task manager.
- Deactivate the Bluetooth feature.
- Deactivate the Wi-Fi feature.
- Deactivate auto-syncing of applications.
- Decrease the Screen timeout.
- Decrease the brightness of the display.

## Using the memory card

Your phone supports the use of microSD™ or microSDHC™ memory cards of up to 32 GB capacity. These memory cards are specifically designed for mobile phones and other ultra-small devices, and are ideal for storing media-rich files such as music, programs, videos and photographs for use with your phone.

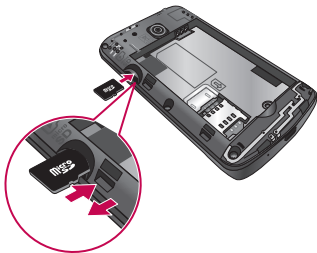
### To insert a memory card:

Insert the memory card into the slot. Make sure the gold contact area is facing downwards.

### To safely remove the memory card:

Touch  > **Apps** tab > **Settings** > **Storage** from the DEVICE > **Unmount SD card** > **OK**.

## Getting to know your phone



### NOTE:

- Use only compatible memory cards with your phone. Using incompatible memory cards may damage the card and data stored on the card, as well as the phone.
- As the device uses FAT32, the maximum size for any given file is 4 GB.

### WARNING

Do not insert or remove the memory card when the phone is ON. Doing so may damage the memory card as well as your phone, and the data stored on the memory card may become corrupt.

### To format the memory card:

Your memory card may already be formatted. If it isn't, you must format it before you can use it.


**NOTE:** All files on your memory card are deleted when it is formatted.

- 1 Touch  to open the application list.
- 2 Scroll and touch **Settings** > **Storage** from the DEVICE tab.
- 3 Touch **Unmount SD card** and touch **OK** to confirm.
- 4 Touch **Erase SD card** > **Erase SD card** > **Erase everything**.
- 5 If you have set a pattern lock, input the pattern lock then select **Erase everything**.


**NOTE:** If there is content on your memory card, the folder structure may be different after formatting, as all the files will have been deleted.

## Locking and unlocking the screen

If you do not use the phone for a while, the screen will be automatically turned off and locked. This helps to prevent accidental touches and saves battery power.

When you are not using your phone, press the **Power/Lock key**  to lock your phone.

If there are any programs running when you lock your screen, they may be still running in Lock mode. It is recommended that you exit all programs before entering Lock mode to avoid unnecessary charges (e.g. phone calls, web access and data communications).

To wake up your phone, press the **Power/Lock key** . The Lock screen will appear. Touch and slide the Lock screen in any direction to unlock your Home screen. The last screen you viewed will open.

# Your Home screen

## Touch screen tips

Here are some tips on how to navigate on your phone.

**Tap or touch** – A single finger tap selects items, links, shortcuts and letters on the on-screen keyboard.

**Touch and hold** – Touch and hold an item on the screen by touching it and not lifting your finger until an action occurs. For example, to open a contact's available options, touch and hold the contact in the Contacts list until the context menu opens.

**Drag** – Touch and hold an item for a moment and then, without lifting your finger, move your finger on the screen until you reach the target position. You can drag items on the Home screen to reposition them.

**Swipe or slide** – To swipe or slide, quickly move your finger across the surface of the screen, without pausing when you first touch it (so you don't drag an item instead). For example, you can slide the screen up or down to scroll through a list, or browse through the different Home screens by swiping from left to right (and vice versa).

**Double-tap** – Double-tap to zoom on a webpage or a map. For example, quickly double-tap a section of a webpage to adjust that section to fit the width of the screen. You can also double-tap to zoom in and out after taking a picture (using the Camera), and when using Maps.

**Pinch-to-Zoom** – Use your index finger and thumb in a pinching or spreading motion to zoom in or out when using the browser or Maps, or when browsing pictures.

**Rotate the screen** – From many applications and menus, the orientation of the screen adjusts to the device's physical orientation.

### NOTE:

- To select an item, touch the center of the icon.
- Do not press too hard; the Touch screen is sensitive enough to pick up a light, yet firm touch.
- Use the tip of your finger to touch the option you want. Be careful not to touch any other keys.

# Home screen


## Home Screen Overview


The main home screen is the starting point for many applications and functions, and it allows you to add items like application icons, shortcuts, folders or widgets to give you instant access to information and applications. This is the default page and accessible from any menu by pressing **Home** key.

On your Home screen, you can view menu icons at the bottom of the screen. Menu icons provide easy and one-touch access to the functions you use the most.

 Touch the **Phone** icon to bring up the Touch screen dialpad to make a call.

 Touch the **Contacts** icon to open your contacts.

 Touch the **Messaging** icon to access the messaging menu. This is where you can create a new message.

 Touch the **Apps** icon at the bottom of the screen. This displays all of your installed applications. To open any application, simply touch the icon in the applications list.

## Navigating Through the Home Screens

Your phone has several home screens. If you like, you can place different applications on each of the home screens.

- 1 From the main Home screen, swipe the screen with your finger in either direction. The main Home Screen is located in the middle of Home screens.



# Your Home screen


## Navigating Through the Application Menu

Your phone initially has several Application Menus available. Follow these steps to navigate through the Application Menu screens:

- 1 At the Home screen, tap . The first Application Menu displays.
- 2 Swipe the screen left or right to access the other two menus.
- 3 Tap one of the application icons.

## Navigating Through the Sub-Menus

Sub-menus are available when you are at any Home screen or have selected a feature or application such as Phone, Contacts, Messaging or Internet.

- 1 Touch . A sub-menu displays at the bottom of the phone screen.
- 2 Tap an option.



## Customizing the Screen

You can customize your Home screen by doing the following:

- Changing the Wallpaper
- Creating Shortcuts
- Creating Application Folders on Home screen
- Adding and Removing Widgets on Home screen
- Customizing the Apps Menu screen

### Changing the Wallpaper of Home screen

You can change the Wallpaper (background) of your home screen by following these steps:


- 1 From the Home screen, touch and hold on an empty area of the screen.
- 2 Under the **Select wallpaper from** heading, tap one of the following options:
  - **Gallery**: select a wallpaper from photographs you have taken with your camera.
  - **Live Wallpapers**: select an animated wallpaper. This option is not available for the Lock screen option.
  - **Wallpaper gallery**: select from many still-life wallpapers.

### Creating Shortcuts on Home screen


Shortcuts are different than the current Home screen Widgets that only launch an application. Shortcuts activate a feature, action, or launch an application.

**NOTE:** To move a shortcut from one screen to another, it must first be deleted from its current screen. Navigate to the new screen, then add the shortcut.



### Adding a shortcut from the Apps Menu

- 1 Press  to go to the main Home screen, if it is not already selected.
- 2 Navigate to the desired Home screen.

## Your Home screen



- 3 Tap  to display your current applications.
- 4 Scroll through the list and locate your desired application.
- 5 Touch and hold the application icon. This creates an immediate shortcut of the selected icon and closes the **Apps** tab.
- 6 While still holding the on-screen icon, position it on the current page. Once complete, release the screen to lock the new shortcut into its new position on the current screen.

### Deleting a shortcut

- 1 Press  to activate the Home screen.
- 2 Touch and hold the desired shortcut. This unlocks it from its location on the current screen.
- 3 Drag the icon over the **Remove** icon  and release it.

### Creating Application Folders on Home screen


You can create application folders to hold similar applications if you wish.

- 1 Drop one app icon over another one on a Home screen, and the two icons will be combined. Repeat this step or tap the **Folder** icon  + icon , then you can combine several app icons in a folder.

## Adding and Removing Widgets on Home screen


Widgets are self-contained applications that reside in either your Widgets tab or on the main or extended Home screens. Unlike a shortcut, the Widget displays as an on-screen application.

### Adding a Widget

- 1 Navigate to the desired Home screen page from the main Home screen.
- 2 Tap .
- 3 Tap **Apps** > **Widgets** tab at the top of the screen.
- 4 Touch and hold an available Widget to position it on the current screen.





## Removing a Widget

- 1 Touch and hold a Widget until you can move it around on the screen.
- 2 Drag the Widget over the **Remove** icon  and release it.

**NOTE:** This action does not actually delete the Widget, it just removes it from the current Home screen.

## Customizing the Apps Menu screen

- 1 Touch the  from the main Home screen.
- 2 Tap the **Apps** tab at the top of the screen to go to the Apps Menu screen, if it is not already selected.
- 3 Touch the  to customize the Apps Menu screen using **Search**, **Sort by**, **Apps wallpaper**, **Hide/Show apps** menu options.

## Returning to recently-used applications

- 1 Press and hold the **Home** key. The screen displays a pop-up containing the icons of applications you used recently.
- 2 Touch an icon to open the application. Or touch the **Back** key to return to your previous screen.

## Notifications

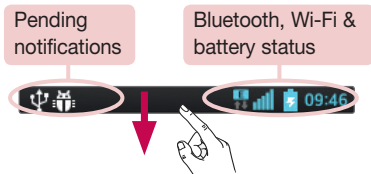
Notifications alert you to the arrival of new messages, calendar events, and alarms, as well as to ongoing events, such as video downloads.

From the notifications panel, you can view your phone's current status and pending notifications.

When a notification arrives, its icon appears at the top of the screen. Icons for pending notifications appear on the left, and system icons showing things like Wi-Fi or battery strength on the right.

# Your Home screen

**NOTE:** The available options may vary depending on the region or service provider.



## Swipe down for notifications & settings

Swipe down the status bar to open the notifications panel. To close the notifications panel, swipe up the bar that is at the bottom of the screen.

## Quick Settings

Use Quick Settings to easily toggle function settings like Wi-Fi, manage display brightness and more. For Quick Settings, swipe down the status bar to open the notifications panel and swipe or touch for you desired setting.

### To rearrange Quick Setting items on the notification panel

Touch . You can then check and rearrange items on the notification panel.

