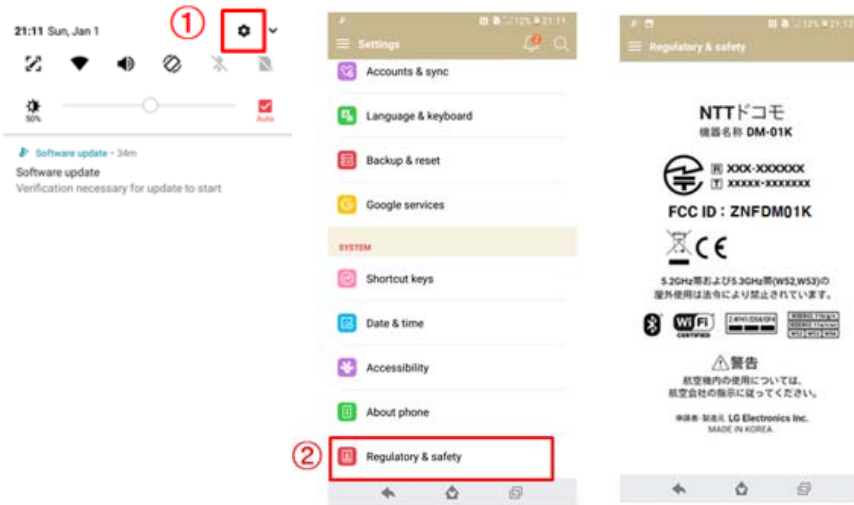


# Description of E-Label on the ZNFDM01K

## FCC ID is applied by E-Label on the device



Step 1	Settings
Step 2	Regulatory & Safety

## Instruction of E-Label on the user manual

**Regulatory information  
(FCC ID number, etc.)**

For regulatory details, operate from the Home screen, ► "Settings" ► "Regulatory & Safety" on your phone.

## FCC ID is applied on packaging Label

Model No : DM-01K  
 FCC ID : ZNFDM01K  
 Made in XXXX  
 IMEI : XXXXXXXXXXXXXXXX

## Note!

We, LG Electronics MobileComm USA, state that at the time of purchase, the FCC ID is readily and physically visible to the purchaser on the packaging Label per 2.925(d). So, The FCC ID will be able to survive normal shipping and handling so it is visible for inspection at the time of import. We have programmed the e-label and it is not able to be modified by any third party. Also, SIM Card in is not required to access the FCC ID number.