

SAR Plots

- Verification Plots
- SAR Test Plots

DT&C Co., Ltd.

DUT: Dipole 835 MHz; Type: D835V2; Serial: D835V2 - SN:464

Communication System: UID 0, CW (0); Frequency: 835 MHz; Duty Cycle: 1:1
Medium parameters used: $f = 835$ MHz; $\sigma = 0.877$ S/m; $\epsilon_r = 40.613$; $\rho = 1000$ kg/m³
Phantom section: Flat Section

DASY5 Configuration:

Probe: ES3DV3 - SN3328; ConvF(6.5, 6.5, 6.5); Calibrated: 3/21/2017; Electronics: DAE3 Sn519
Sensor-Surface: 3mm (Mechanical Surface Detection)

Phantom: SAM-twin right_2013_09_24; Type: QD000P40CD; Serial: TP:1783
Measurement SW: DASY52, Version 52.8 (8); SEMCAD X Version 14.6.10 (7331)

Test Date: 2017-10-16; Ambient Temp: 22.3; Tissue Temp: 22.1

835 MHz System Head Verification

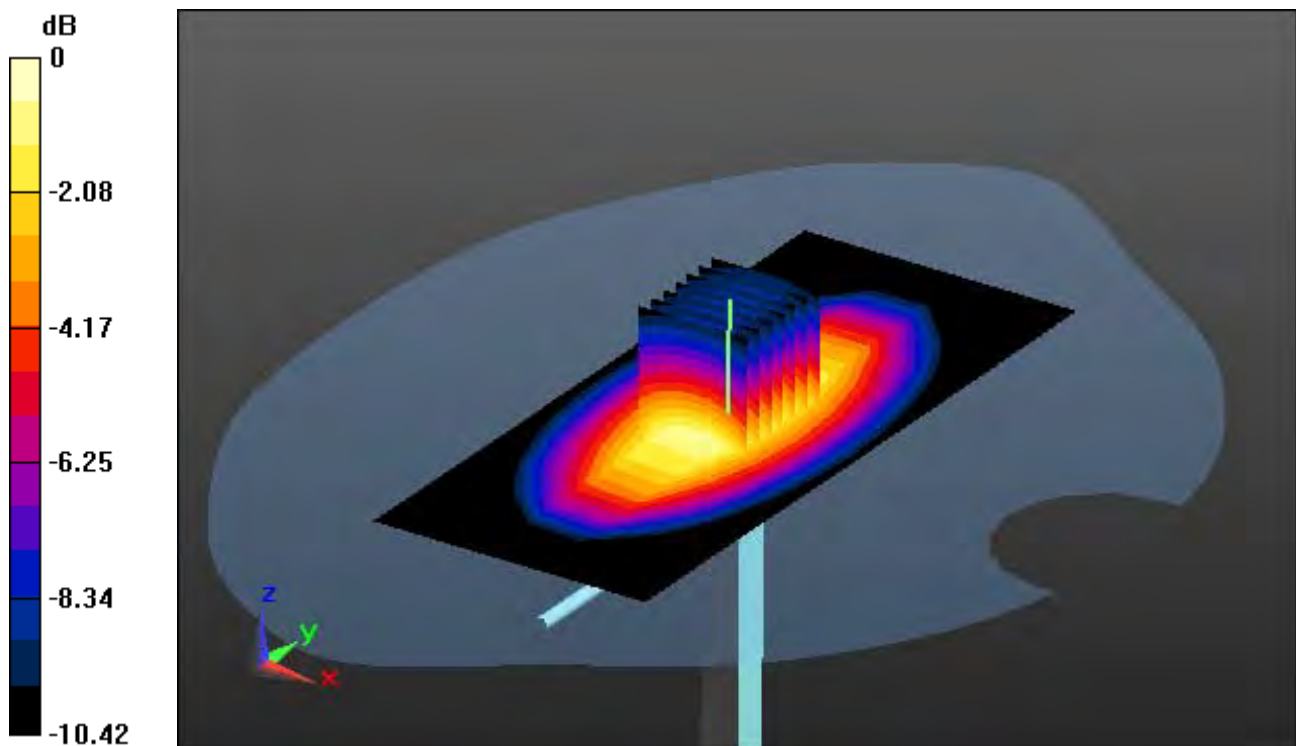
Area Scan (6x13x1): Measurement grid: dx=15mm, dy=15mm

Zoom Scan (7x7x7)/Cube 0: Measurement grid: dx=5mm, dy=5mm, dz=5mm

Power Drift = -0.00 dB

Peak SAR (extrapolated) = 3.48 W/kg

SAR(1 g) = 2.33 W/kg; SAR(10 g) = 1.53 W/kg



0 dB = 2.73 W/kg

DT&C Co., Ltd.

DUT: Dipole 835 MHz; Type: D835V2; Serial: D835V2 - SN:464

Communication System: UID 0, CW (0); Frequency: 835 MHz; Duty Cycle: 1:1
Medium parameters used: $f = 835$ MHz; $\sigma = 0.897$ S/m; $\epsilon_r = 40.222$; $\rho = 1000$ kg/m³
Phantom section: Flat Section

DASY5 Configuration:

Probe: ES3DV3 - SN3327; ConvF(6.49, 6.49, 6.49); Calibrated: 9/18/2017; Electronics: DAE4 Sn1396
Sensor-Surface: 3mm (Mechanical Surface Detection)

Phantom: SAM-twin right_2013_09_24; Type: QD000P40CD; Serial: TP:1783
Measurement SW: DASY52, Version 52.8 (8); SEMCAD X Version 14.6.10 (7331)

Test Date: 2017-11-30; Ambient Temp: 20.9; Tissue Temp: 20.8

835 MHz System Head Verification

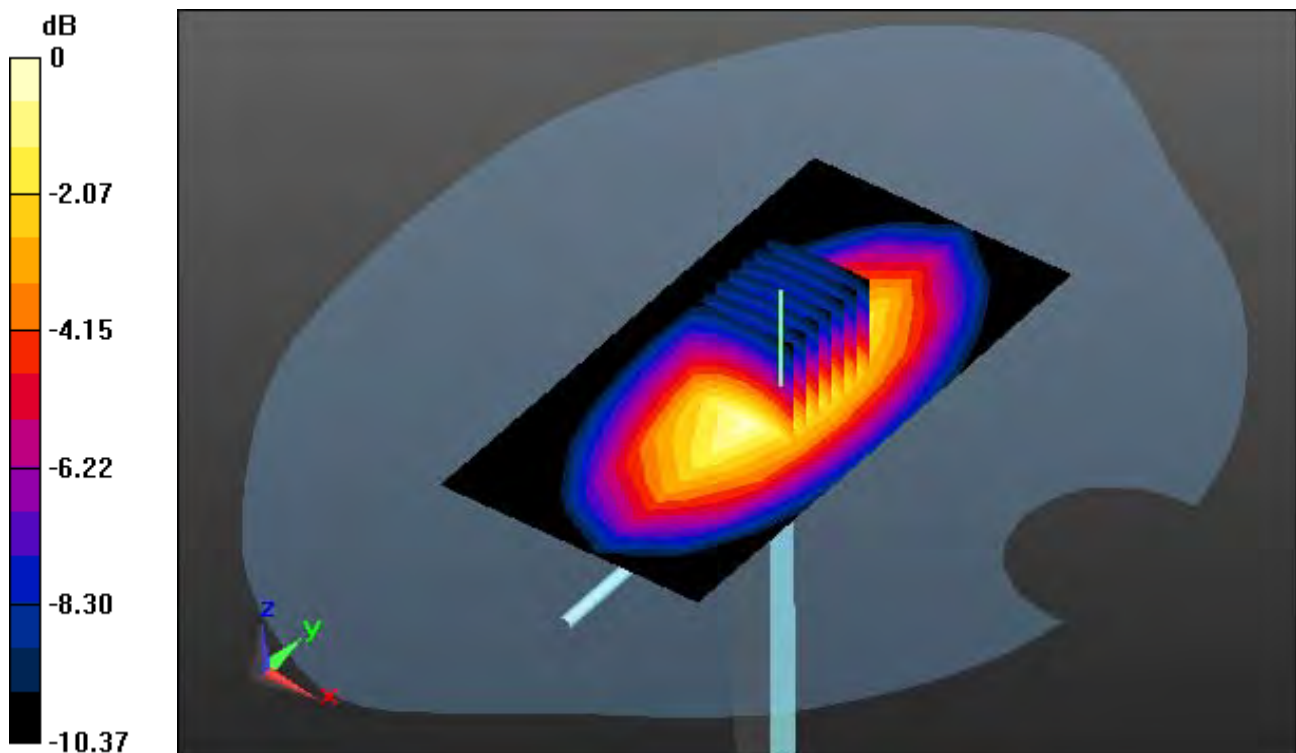
Area Scan (6x11x1): Measurement grid: dx=15mm, dy=15mm

Zoom Scan (7x7x7)/Cube 0: Measurement grid: dx=5mm, dy=5mm, dz=5mm

Power Drift = 0.00 dB

Peak SAR (extrapolated) = 3.66 W/kg

SAR(1 g) = 2.48 W/kg; SAR(10 g) = 1.62 W/kg



0 dB = 2.90 W/kg

DT&C Co., Ltd.

DUT: Dipole 835 MHz; Type: D835V2; Serial: D835V2 - SN:464

Communication System: UID 0, CW (0); Frequency: 835 MHz; Duty Cycle: 1:1
Medium parameters used: $f = 835$ MHz; $\sigma = 1.002$ S/m; $\epsilon_r = 53.406$; $\rho = 1000$ kg/m³
Phantom section: Flat Section

DASY5 Configuration:

Probe: ES3DV3 - SN3328; ConvF(6.35, 6.35, 6.35); Calibrated: 3/21/2017; Electronics: DAE3 Sn519
Sensor-Surface: 3mm (Mechanical Surface Detection)
Phantom: SAM-twin right_2013_09_24; Type: QD000P40CD; Serial: TP:1783
Measurement SW: DASY52, Version 52.8 (8); SEMCAD X Version 14.6.10 (7331)

Test Date: 2017-10-17; Ambient Temp: 21.1; Tissue Temp: 21.0

835 MHz System Body Verification

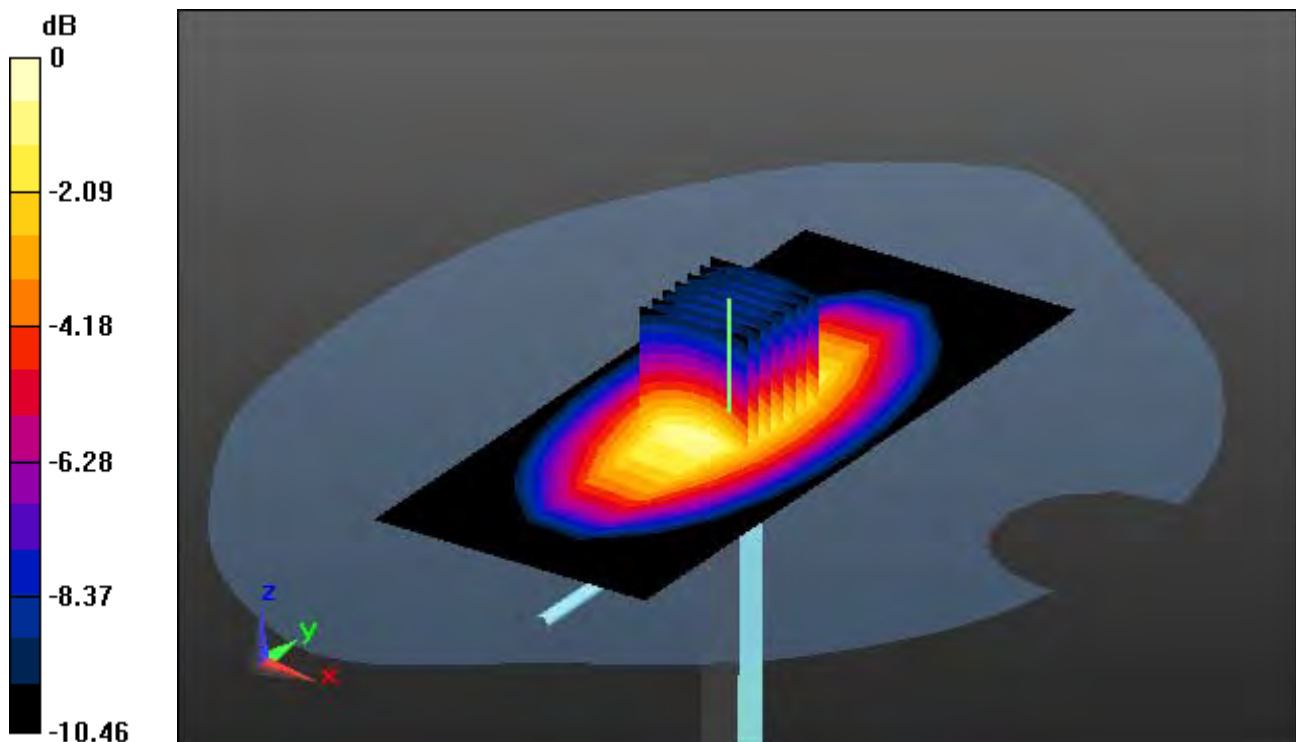
Area Scan (6x13x1): Measurement grid: dx=15mm, dy=15mm

Zoom Scan (7x7x7)/Cube 0: Measurement grid: dx=5mm, dy=5mm, dz=5mm

Power Drift = 0.01 dB

Peak SAR (extrapolated) = 3.57 W/kg

SAR(1 g) = 2.39 W/kg; SAR(10 g) = 1.56 W/kg



0 dB = 2.79 W/kg

DT&C Co., Ltd.

DUT: Dipole 835 MHz; Type: D835V2; Serial: D835V2 - SN:464

Communication System: UID 0, CW (0); Frequency: 835 MHz; Duty Cycle: 1:1
Medium parameters used: $f = 835$ MHz; $\sigma = 0.995$ S/m; $\epsilon_r = 53.223$; $\rho = 1000$ kg/m³
Phantom section: Flat Section

DASY5 Configuration:

Probe: ES3DV3 - SN3327; ConvF(6.31, 6.31, 6.31); Calibrated: 9/18/2017; Electronics: DAE4 Sn1396
Sensor-Surface: 3mm (Mechanical Surface Detection)

Phantom: SAM-twin right_2013_09_24; Type: QD000P40CD; Serial: TP:1783
Measurement SW: DASY52, Version 52.8 (8); SEMCAD X Version 14.6.10 (7331)

Test Date: 2017-11-30; Ambient Temp: 20.9; Tissue Temp: 21.1

835 MHz System Body Verification

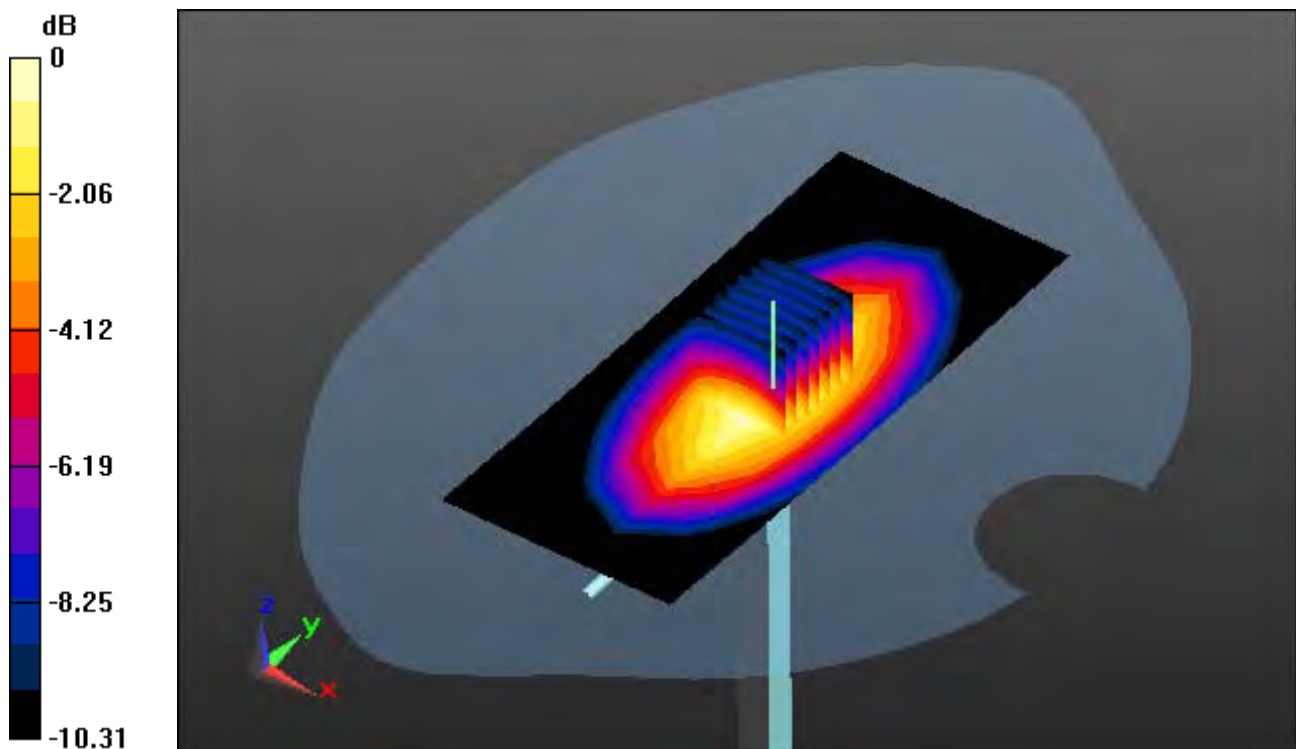
Area Scan (6x13x1): Measurement grid: dx=15mm, dy=15mm

Zoom Scan (7x7x7)/Cube 0: Measurement grid: dx=5mm, dy=5mm, dz=5mm

Power Drift = 0.02 dB

Peak SAR (extrapolated) = 3.74 W/kg

SAR(1 g) = 2.53 W/kg; SAR(10 g) = 1.66 W/kg



0 dB = 2.98 W/kg

DT&C Co., Ltd.

DUT: Dipole 1900 MHz; Type: D1900V2; Serial: D1900V2 - SN:5d029

Communication System: UID 0, CW (0); Frequency: 1900 MHz; Duty Cycle: 1:1
Medium parameters used: $f = 1900$ MHz; $\sigma = 1.447$ S/m; $\epsilon_r = 40.399$; $\rho = 1000$ kg/m³
Phantom section: Flat Section

DASY5 Configuration:

Probe: ES3DV3 - SN3328; ConvF(5.27, 5.27, 5.27); Calibrated: 3/21/2017; Electronics: DAE3 Sn519
Sensor-Surface: 3mm (Mechanical Surface Detection)
Phantom: SAM-twin middle_2013_09_24; Type: QD000P40CD; Serial: 1782
Measurement SW: DASY52, Version 52.8 (8); SEMCAD X Version 14.6.10 (7331)

Test Date: 2017-10-18; Ambient Temp: 21.4; Tissue Temp: 21.2

1900 MHz System Head Verification

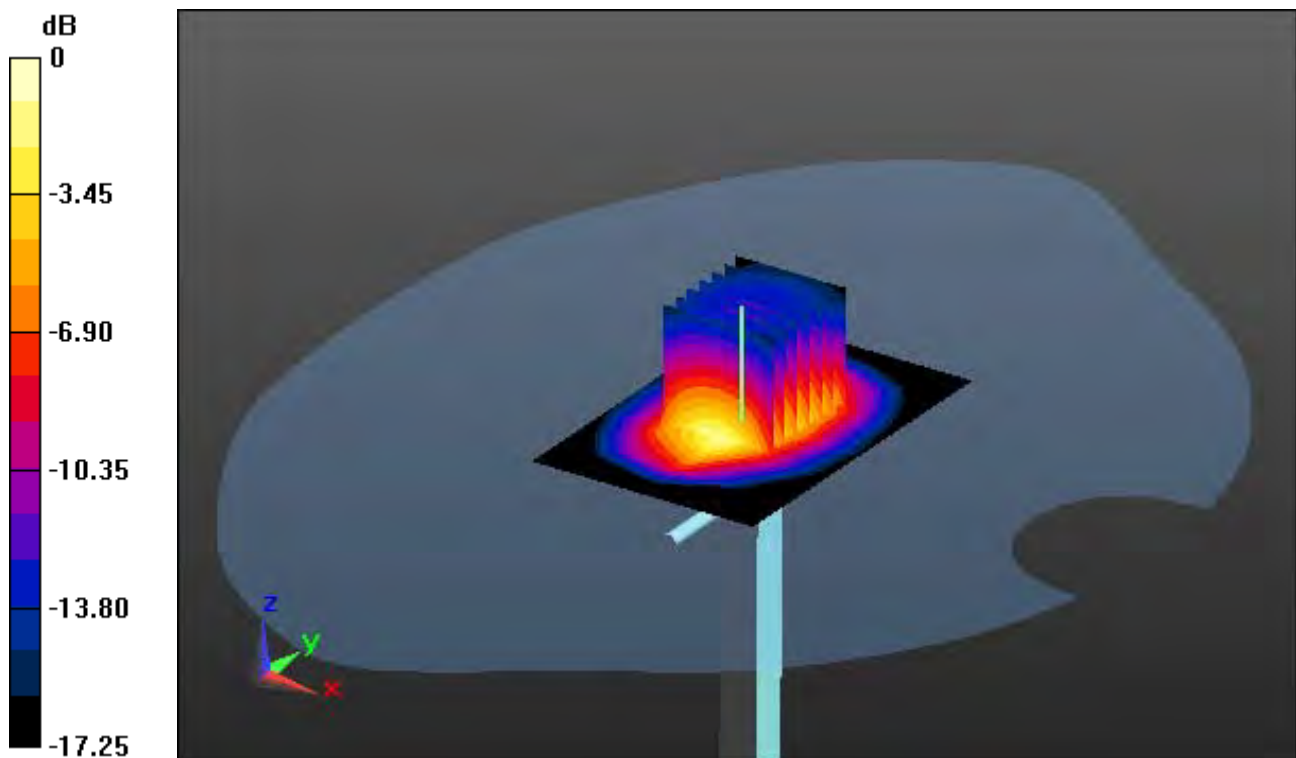
Area Scan (5x7x1): Measurement grid: dx=15mm, dy=15mm

Zoom Scan (7x7x7)/Cube 0: Measurement grid: dx=5mm, dy=5mm, dz=5mm

Power Drift = -0.01 dB

Peak SAR (extrapolated) = 17.5 W/kg

SAR(1 g) = 9.75 W/kg; SAR(10 g) = 5.12 W/kg



0 dB = 12.3 W/kg

DT&C Co., Ltd.

DUT: Dipole 1900 MHz; Type: D1900V2; Serial: D1900V2 - SN:5d029

Communication System: UID 0, CW (0); Frequency: 1900 MHz; Duty Cycle: 1:1
Medium parameters used: $f = 1900$ MHz; $\sigma = 1.444$ S/m; $\epsilon_r = 41.01$; $\rho = 1000$ kg/m³
Phantom section: Flat Section

DASY5 Configuration:

Probe: ES3DV3 - SN3328; ConvF(5.27, 5.27, 5.27); Calibrated: 3/21/2017; Electronics: DAE3 Sn519
Sensor-Surface: 3mm (Mechanical Surface Detection)
Phantom: SAM with CRP_2016_07_22_middle; Type: QD000P40CD; Serial: TP:1786
Measurement SW: DASY52, Version 52.8 (8); SEMCAD X Version 14.6.10 (7331)

Test Date: 2017-11-30; Ambient Temp: 21.6; Tissue Temp: 22.4

1900 MHz System Head Verification

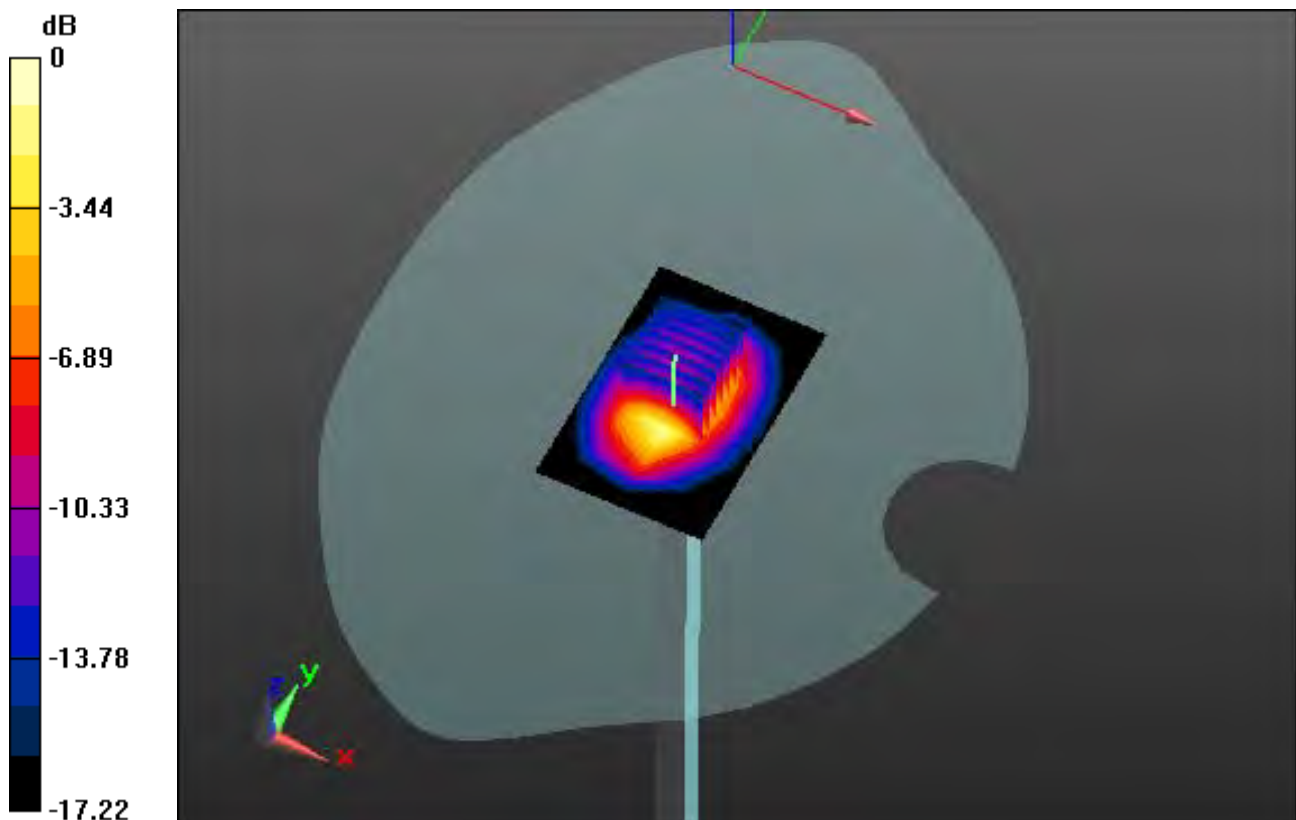
Area Scan (5x7x1): Measurement grid: dx=15mm, dy=15mm

Zoom Scan (7x7x7)/Cube 0: Measurement grid: dx=5mm, dy=5mm, dz=5mm

Power Drift = -0.05 dB

Peak SAR (extrapolated) = 17.5 W/kg

SAR(1 g) = 9.73 W/kg; SAR(10 g) = 5.11 W/kg



0 dB = 12.2 W/kg

DT&C Co., Ltd.

DUT: Dipole 1900 MHz; Type: D1900V2; Serial: D1900V2 - SN:5d029

Communication System: UID 0, CW (0); Frequency: 1900 MHz; Duty Cycle: 1:1
Medium parameters used: $f = 1900$ MHz; $\sigma = 1.546$ S/m; $\epsilon_r = 52.746$; $\rho = 1000$ kg/m³
Phantom section: Flat Section

DASY5 Configuration:

Probe: ES3DV3 - SN3328; ConvF(4.91, 4.91, 4.91); Calibrated: 3/21/2017; Electronics: DAE3 Sn519
Sensor-Surface: 3mm (Mechanical Surface Detection)
Phantom: SAM-twin middle_2013_09_24; Type: QD000P40CD; Serial: 1782
Measurement SW: DASY52, Version 52.8 (8); SEMCAD X Version 14.6.10 (7331)

Test Date: 2017-10-18; Ambient Temp: 21.4; Tissue Temp: 21.3

1900 MHz System Body Verification

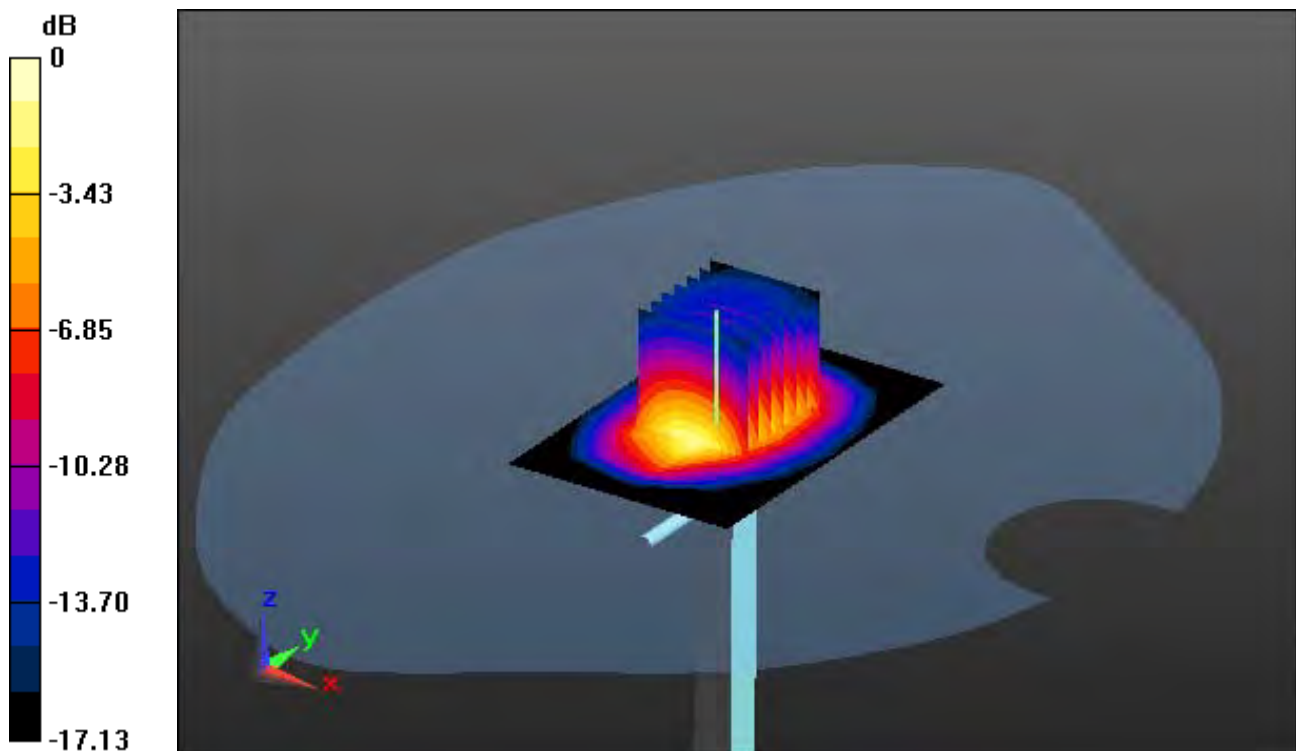
Area Scan (5x7x1): Measurement grid: dx=15mm, dy=15mm

Zoom Scan (7x7x7)/Cube 0: Measurement grid: dx=5mm, dy=5mm, dz=5mm

Power Drift = 0.02 dB

Peak SAR (extrapolated) = 16.5 W/kg

SAR(1 g) = 9.31 W/kg; SAR(10 g) = 4.91 W/kg



0 dB = 11.7 W/kg

DT&C Co., Ltd.

DUT: Dipole 1900 MHz; Type: D1900V2; Serial: D1900V2 - SN:5d029

Communication System: UID 0, CW (0); Frequency: 1900 MHz; Duty Cycle: 1:1
Medium parameters used: $f = 1900$ MHz; $\sigma = 1.557$ S/m; $\epsilon_r = 52.393$; $\rho = 1000$ kg/m³
Phantom section: Flat Section

DASY5 Configuration:

Probe: ES3DV3 - SN3328; ConvF(4.91, 4.91, 4.91); Calibrated: 3/21/2017; Electronics: DAE3 Sn519
Sensor-Surface: 3mm (Mechanical Surface Detection)
Phantom: SAM with CRP_2016_07_22_middle; Type: QD000P40CD; Serial: TP:1786
Measurement SW: DASY52, Version 52.8 (8); SEMCAD X Version 14.6.10 (7331)

Test Date: 2017-11-30; Ambient Temp: 21.6; Tissue Temp: 22.2

1900 MHz System Body Verification

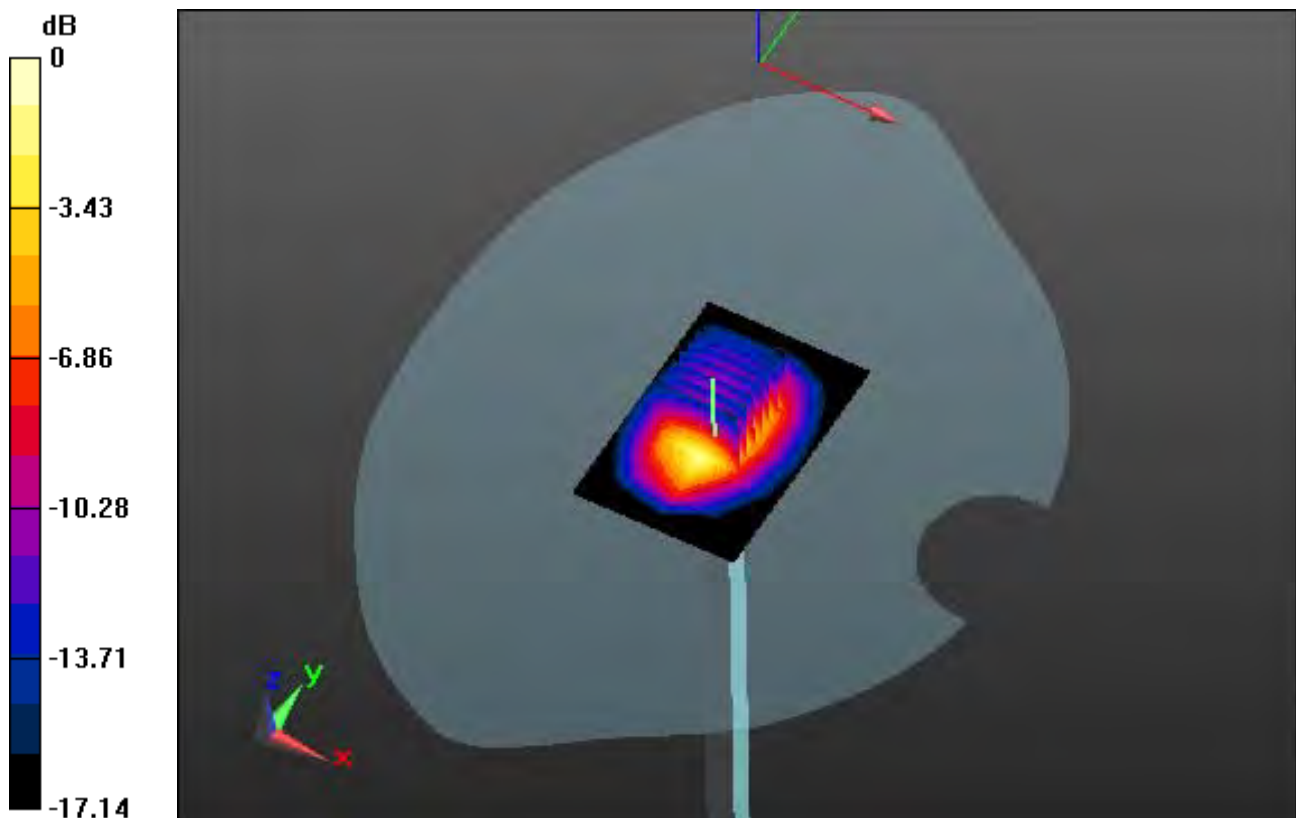
Area Scan (5x7x1): Measurement grid: dx=15mm, dy=15mm

Zoom Scan (7x7x7)/Cube 0: Measurement grid: dx=5mm, dy=5mm, dz=5mm

Power Drift = 0.07 dB

Peak SAR (extrapolated) = 16.6 W/kg

SAR(1 g) = 9.38 W/kg; SAR(10 g) = 4.94 W/kg



0 dB = 11.8 W/kg

DT&C Co., Ltd.

DUT: Dipole 2450 MHz; Type: D2450V2; Serial: D2450V2 - SN:726

Communication System: UID 0, CW; Frequency: 2450 MHz; Duty Cycle: 1:1
Medium parameters used: $f = 2450$ MHz; $\sigma = 1.786$ S/m; $\epsilon_r = 38.636$; $\rho = 1000$ kg/m³
Phantom section: Flat Section

DASY5 Configuration:

Probe: EX3DV4 - SN3930; ConvF(7.87, 7.87, 7.87); Calibrated: 7/26/2017; Electronics: DAE4 Sn1335
Sensor-Surface: 2mm (Mechanical Surface Detection)
Phantom: SAM with CRP_2016_07_22_middle; Type: QD000P40CD; Serial: TP:1786
Measurement SW: DASY52, Version 52.8 (8); SEMCAD X Version 14.6.10 (7331)

Test Date: 2017-10-13; Ambient Temp: 21.3; Tissue Temp: 21.8

2450 MHz System Head Verification

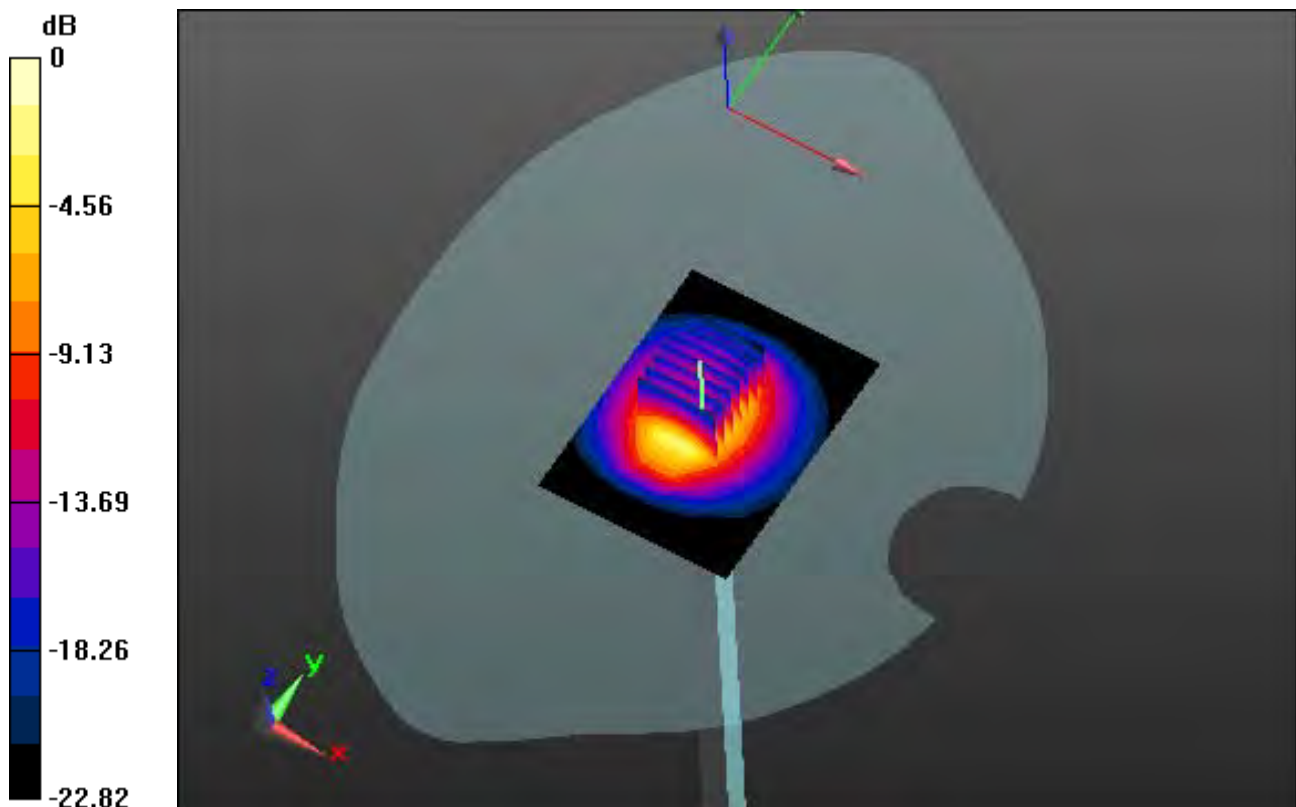
Area Scan (7x9x1): Measurement grid: dx=12mm, dy=12mm

Zoom Scan (7x7x7)/Cube 0: Measurement grid: dx=5mm, dy=5mm, dz=5mm

Power Drift = 0.07 dB

Peak SAR (extrapolated) = 25.6 W/kg

SAR(1 g) = 12.4 W/kg; SAR(10 g) = 5.72 W/kg



0 dB = 17.4 W/kg

DT&C Co., Ltd.

DUT: Dipole 2450 MHz; Type: D2450V2; Serial: D2450V2 - SN:726

Communication System: UID 0, CW; Frequency: 2450 MHz; Duty Cycle: 1:1
Medium parameters used: $f = 2450$ MHz; $\sigma = 1.986$ S/m; $\epsilon_r = 52.492$; $\rho = 1000$ kg/m³
Phantom section: Flat Section

DASY5 Configuration:

Probe: EX3DV4 - SN3930; ConvF(7.9, 7.9, 7.9); Calibrated: 7/26/2017; Electronics: DAE4 Sn1335
Sensor-Surface: 2mm (Mechanical Surface Detection)
Phantom: SAM with CRP_2016_07_22_middle; Type: QD000P40CD; Serial: TP:1786
Measurement SW: DASY52, Version 52.8 (8); SEMCAD X Version 14.6.10 (7331)

Test Date: 2017-10-13; Ambient Temp: 21.3; Tissue Temp: 22.0

2450 MHz System Body Verification

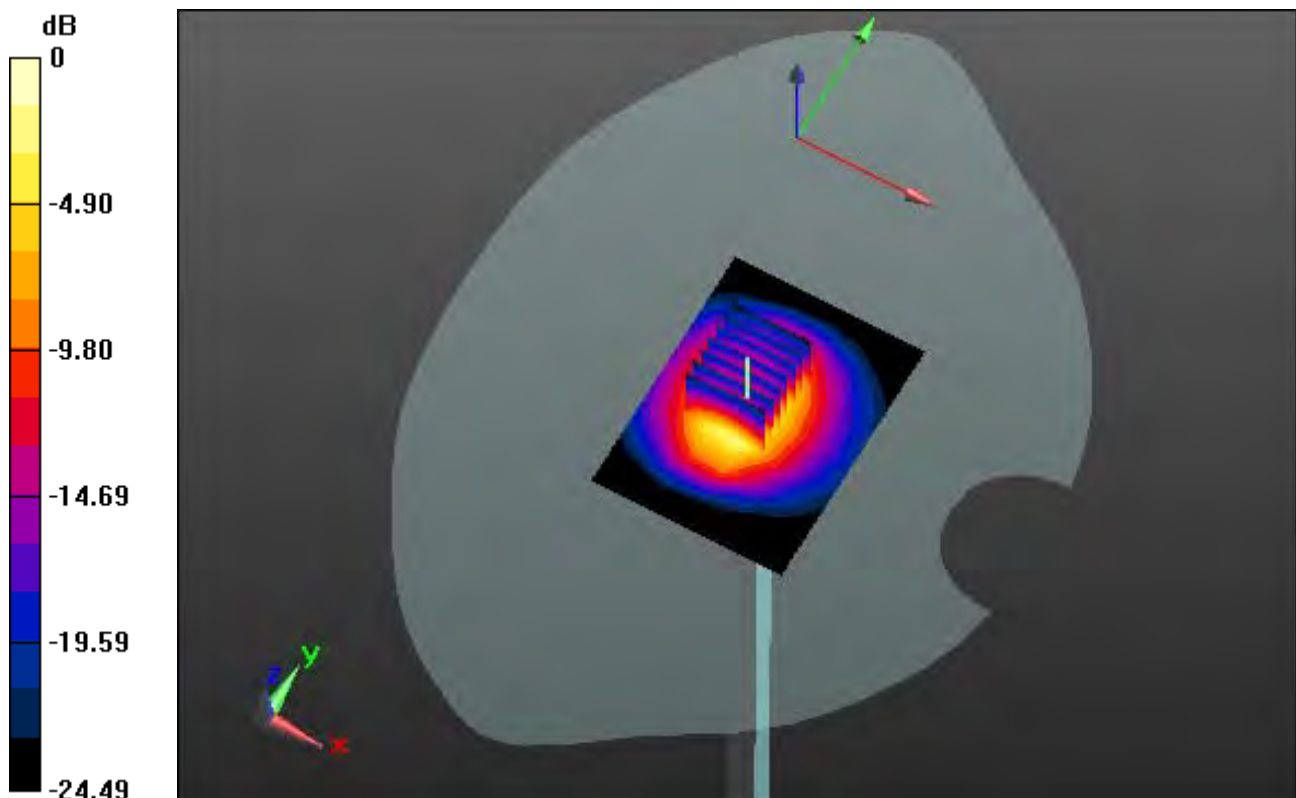
Area Scan (7x9x1): Measurement grid: dx=12mm, dy=12mm

Zoom Scan (7x7x7)/Cube 0: Measurement grid: dx=5mm, dy=5mm, dz=5mm

Power Drift = -0.04 dB

Peak SAR (extrapolated) = 28.8 W/kg

SAR(1 g) = 13.1 W/kg; SAR(10 g) = 5.89 W/kg



0 dB = 19.0 W/kg

DT&C Co., Ltd.

DUT: Dipole 5000 MHz; Type: D5GHzV2; Serial: D5GHzV2 - SN:1103

Communication System: UID 0, CW (0); Frequency: 5200 MHz; Duty Cycle: 1:1
Medium parameters used: $f = 5200$ MHz; $\sigma = 5.5$ S/m; $\epsilon_r = 47.261$; $\rho = 1000$ kg/m³
Phantom section: Flat Section

DASY5 Configuration:

Probe: EX3DV4 - SN3930; ConvF(4.87, 4.87, 4.87); Calibrated: 7/26/2017; Electronics: DAE4 Sn1335
Sensor-Surface: 1.4mm (Mechanical Surface Detection)
Phantom: SAM with CRP_2016_07_22_middle; Type: QD000P40CD; Serial: TP:1786
Measurement SW: DASY52, Version 52.8 (8); SEMCAD X Version 14.6.10 (7331)

Test Date: 2017-10-16; Ambient Temp: 21.6; Tissue Temp: 22.2

5200 MHz System Body Verification

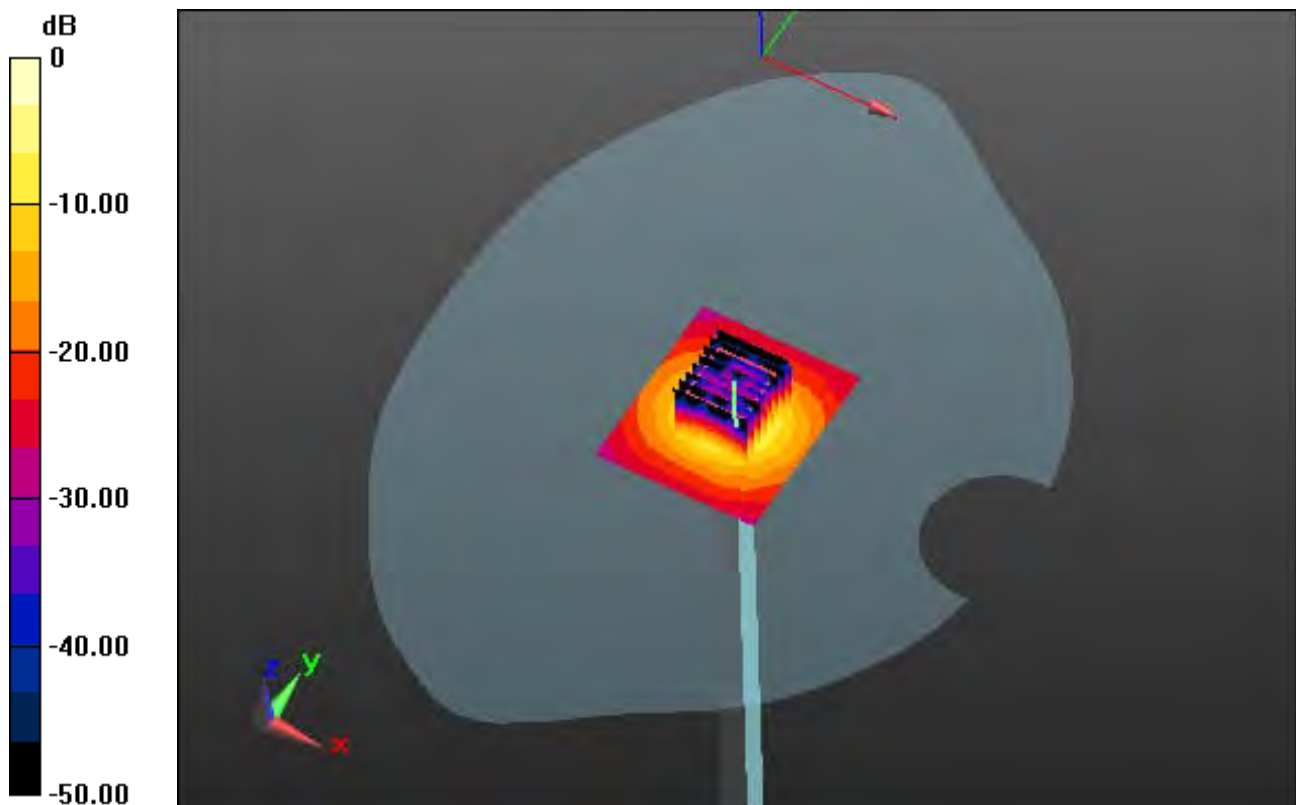
Area Scan (7x8x1): Measurement grid: dx=10mm, dy=10mm

Zoom Scan (8x8x7)/Cube 0: Measurement grid: dx=4mm, dy=4mm, dz=1.4mm, Graded Ratio: 1.4

Power Drift = -0.18 dB

Peak SAR (extrapolated) = 32.3 W/kg

SAR(1 g) = 7.5 W/kg; SAR(10 g) = 2.1 W/kg



0 dB = 18.1 W/kg

DT&C Co., Ltd.

DUT: Dipole 5000 MHz; Type: D5GHzV2; Serial: D5GHzV2 - SN:1103

Communication System: UID 0, CW (0); Frequency: 5300 MHz; Duty Cycle: 1:1
Medium parameters used: $f = 5300$ MHz; $\sigma = 4.745$ S/m; $\epsilon_r = 35.522$; $\rho = 1000$ kg/m³
Phantom section: Flat Section

DASY5 Configuration:

Probe: EX3DV4 - SN3930; ConvF(5.24, 5.24, 5.24); Calibrated: 7/26/2017; Electronics: DAE4 Sn1335
Sensor-Surface: 1.4mm (Mechanical Surface Detection)
Phantom: SAM with CRP_2016_07_22_middle; Type: QD000P40CD; Serial: TP:1786
Measurement SW: DASY52, Version 52.8 (8); SEMCAD X Version 14.6.10 (7331)

Test Date: 2017-10-17; Ambient Temp: 21.8; Tissue Temp: 22.0

5300 MHz System Head Verification

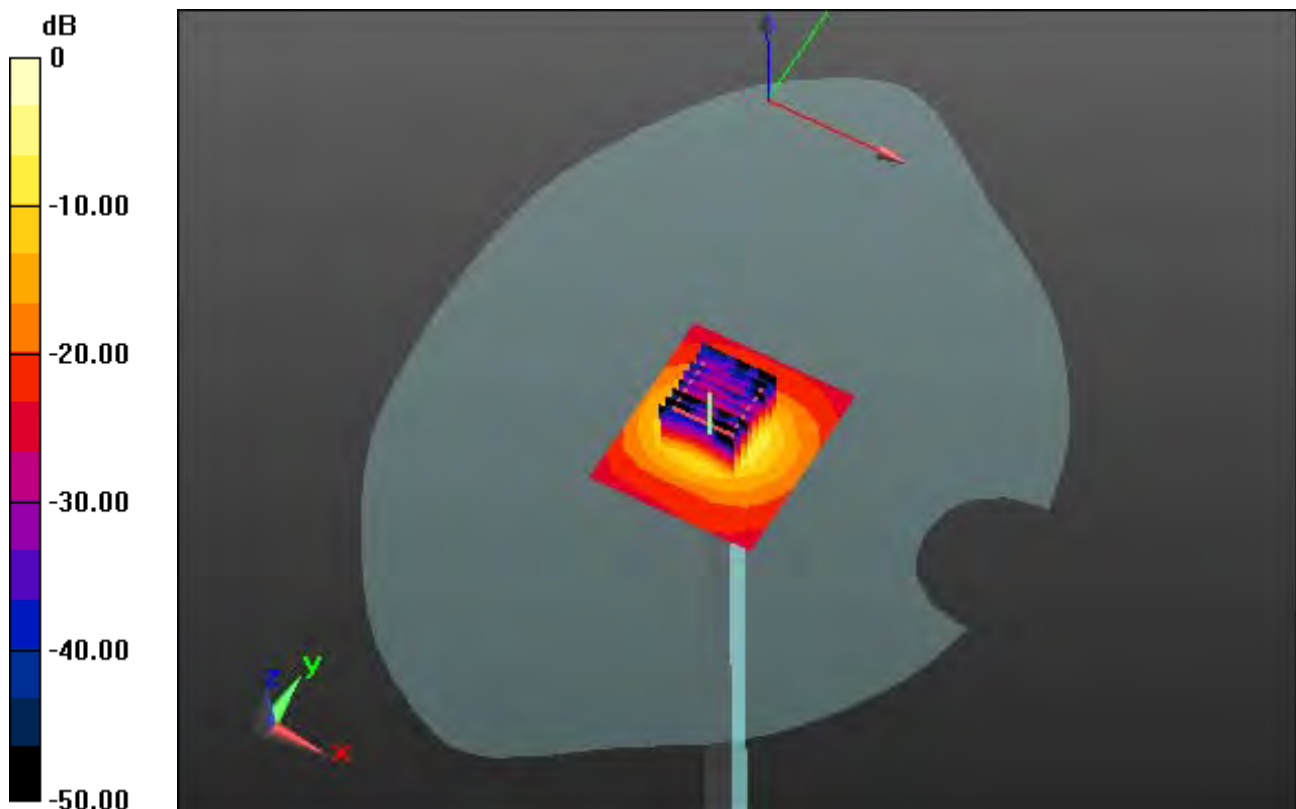
Area Scan (7x8x1): Measurement grid: dx=10mm, dy=10mm

Zoom Scan (8x8x7)/Cube 0: Measurement grid: dx=4mm, dy=4mm, dz=1.4mm, Graded Ratio: 1.4

Power Drift = 0.11 dB

Peak SAR (extrapolated) = 33.5 W/kg

SAR(1 g) = 7.98 W/kg; SAR(10 g) = 2.27 W/kg



0 dB = 18.7 W/kg

DT&C Co., Ltd.

DUT: Dipole 5000 MHz; Type: D5GHzV2; Serial: D5GHzV2 - SN:1103

Communication System: UID 0, CW (0); Frequency: 5300 MHz; Duty Cycle: 1:1
Medium parameters used: $f = 5300$ MHz; $\sigma = 5.477$ S/m; $\epsilon_r = 49.441$; $\rho = 1000$ kg/m³
Phantom section: Flat Section

DASY5 Configuration:

Probe: EX3DV4 - SN3930; ConvF(4.7, 4.7, 4.7); Calibrated: 7/26/2017; Electronics: DAE4 Sn1335
Sensor-Surface: 1.4mm (Mechanical Surface Detection)
Phantom: SAM with CRP_2016_07_22_middle; Type: QD000P40CD; Serial: TP:1786
Measurement SW: DASY52, Version 52.8 (8); SEMCAD X Version 14.6.10 (7331)

Test Date: 2017-10-17; Ambient Temp: 21.8; Tissue Temp: 22.1

5300 MHz System Body Verification

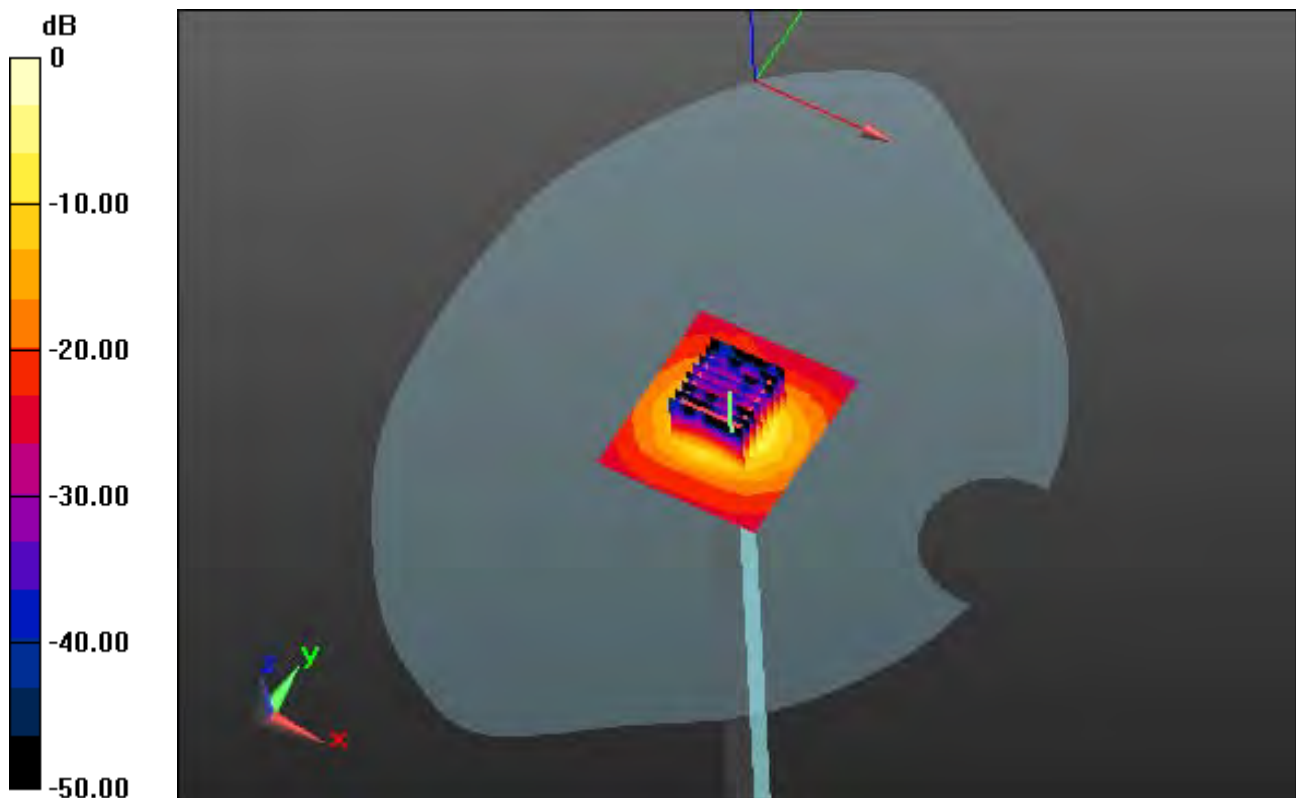
Area Scan (7x8x1): Measurement grid: dx=10mm, dy=10mm

Zoom Scan (8x8x7)/Cube 0: Measurement grid: dx=4mm, dy=4mm, dz=1.4mm, Graded Ratio: 1.4

Power Drift = -0.09 dB

Peak SAR (extrapolated) = 34.9 W/kg

SAR(1 g) = 8.01 W/kg; SAR(10 g) = 2.23 W/kg



0 dB = 19.1 W/kg

DT&C Co., Ltd.

DUT: Dipole 5000 MHz; Type: D5GHzV2; Serial: D5GHzV2 - SN:1103

Communication System: UID 0, CW (0); Frequency: 5500 MHz; Duty Cycle: 1:1
Medium parameters used: $f = 5500$ MHz; $\sigma = 4.872$ S/m; $\epsilon_r = 34.602$; $\rho = 1000$ kg/m³
Phantom section: Flat Section

DASY5 Configuration:

Probe: EX3DV4 - SN3930; ConvF(4.97, 4.97, 4.97); Calibrated: 7/26/2017; Electronics: DAE4 Sn1335
Sensor-Surface: 1.4mm (Mechanical Surface Detection)
Phantom: SAM with CRP_2016_07_22_middle; Type: QD000P40CD; Serial: TP:1786
Measurement SW: DASY52, Version 52.8 (8); SEMCAD X Version 14.6.10 (7331)

Test Date: 2017-10-18; Ambient Temp: 21.6; Tissue Temp: 21.9

5500 MHz System Head Verification

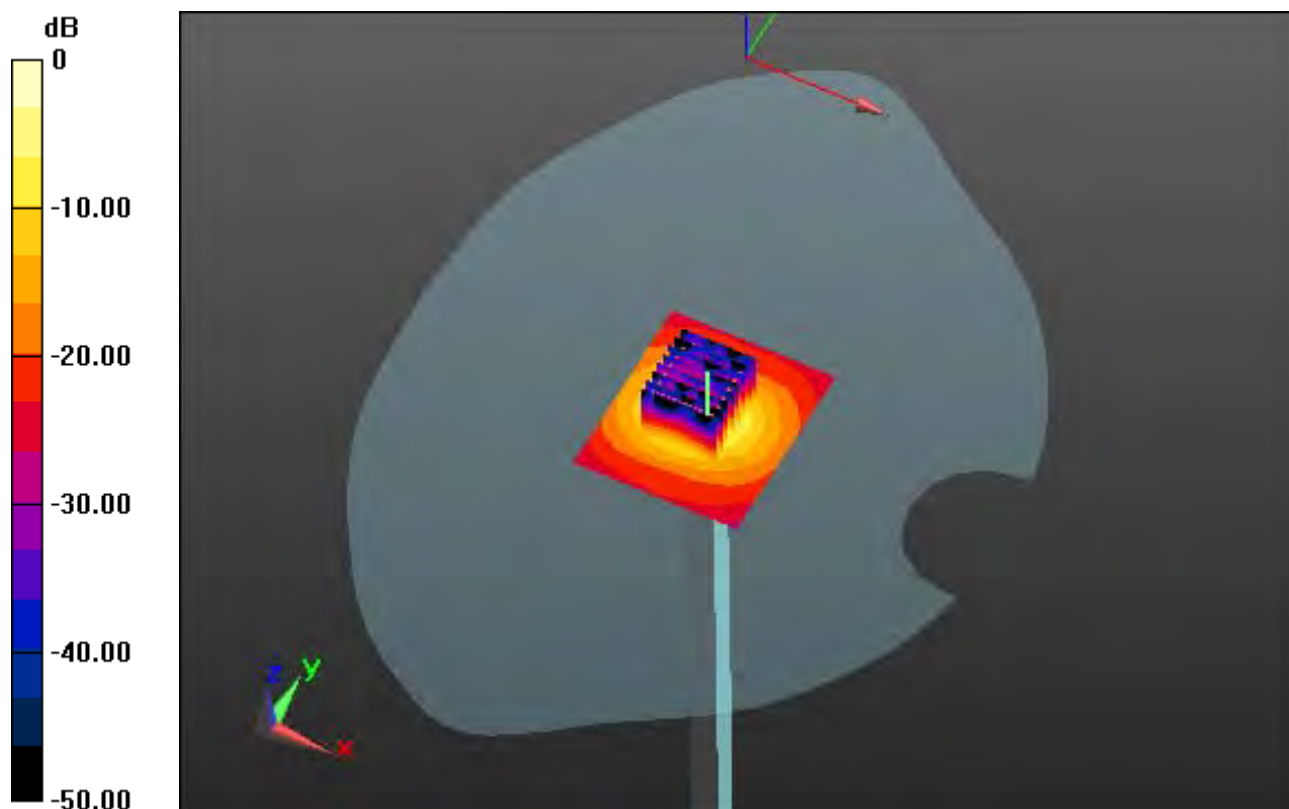
Area Scan (7x8x1): Measurement grid: dx=10mm, dy=10mm

Zoom Scan (8x8x7)/Cube 0: Measurement grid: dx=4mm, dy=4mm, dz=1.4mm, Graded Ratio: 1.4

Power Drift = 0.11 dB

Peak SAR (extrapolated) = 33.4 W/kg

SAR(1 g) = 7.9 W/kg; SAR(10 g) = 2.24 W/kg



0 dB = 19.1 W/kg

DT&C Co., Ltd.

DUT: Dipole 5000 MHz; Type: D5GHzV2; Serial: D5GHzV2 - SN:1103

Communication System: UID 0, CW (0); Frequency: 5500 MHz; Duty Cycle: 1:1
Medium parameters used: $f = 5500$ MHz; $\sigma = 5.701$ S/m; $\epsilon_r = 47.572$; $\rho = 1000$ kg/m³
Phantom section: Flat Section

DASY5 Configuration:

Probe: EX3DV4 - SN3930; ConvF(4.41, 4.41, 4.41); Calibrated: 7/26/2017; Electronics: DAE4 Sn1335
Sensor-Surface: 1.4mm (Mechanical Surface Detection)
Phantom: SAM with CRP_2016_07_22_middle; Type: QD000P40CD; Serial: TP:1786
Measurement SW: DASY52, Version 52.8 (8); SEMCAD X Version 14.6.10 (7331)

Test Date: 2017-10-18; Ambient Temp: 21.6; Tissue Temp: 22.0

5500 MHz System Body Verification

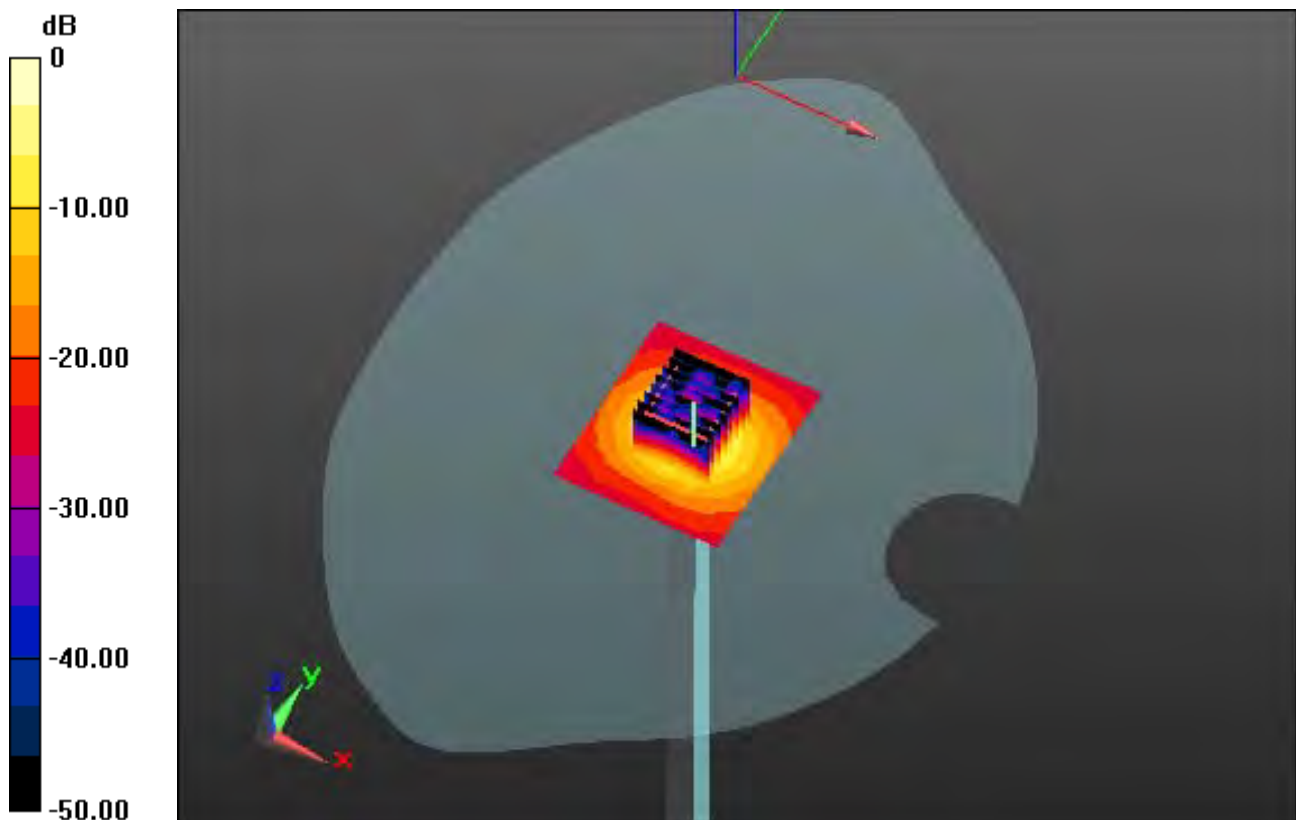
Area Scan (7x8x1): Measurement grid: dx=10mm, dy=10mm

Zoom Scan (8x8x7)/Cube 0: Measurement grid: dx=4mm, dy=4mm, dz=1.4mm, Graded Ratio: 1.4

Power Drift = -0.16 dB

Peak SAR (extrapolated) = 39.7 W/kg

SAR(1 g) = 8.58 W/kg; SAR(10 g) = 2.39 W/kg



0 dB = 20.8 W/kg

DT&C Co., Ltd.

DUT: Dipole 5000 MHz; Type: D5GHzV2; Serial: D5GHzV2 - SN:1103

Communication System: UID 0, CW (0); Frequency: 5800 MHz; Duty Cycle: 1:1
Medium parameters used: $f = 5800$ MHz; $\sigma = 5.208$ S/m; $\epsilon_r = 34.134$; $\rho = 1000$ kg/m³
Phantom section: Flat Section

DASY5 Configuration:

Probe: EX3DV4 - SN3930; ConvF(4.83, 4.83, 4.83); Calibrated: 7/26/2017; Electronics: DAE4 Sn1335
Sensor-Surface: 1.4mm (Mechanical Surface Detection)
Phantom: SAM with CRP_2016_07_22_middle; Type: QD000P40CD; Serial: TP:1786
Measurement SW: DASY52, Version 52.8 (8); SEMCAD X Version 14.6.10 (7331)

Test Date: 2017-10-19; Ambient Temp: 21.9; Tissue Temp: 22.4

5800 MHz System Head Verification

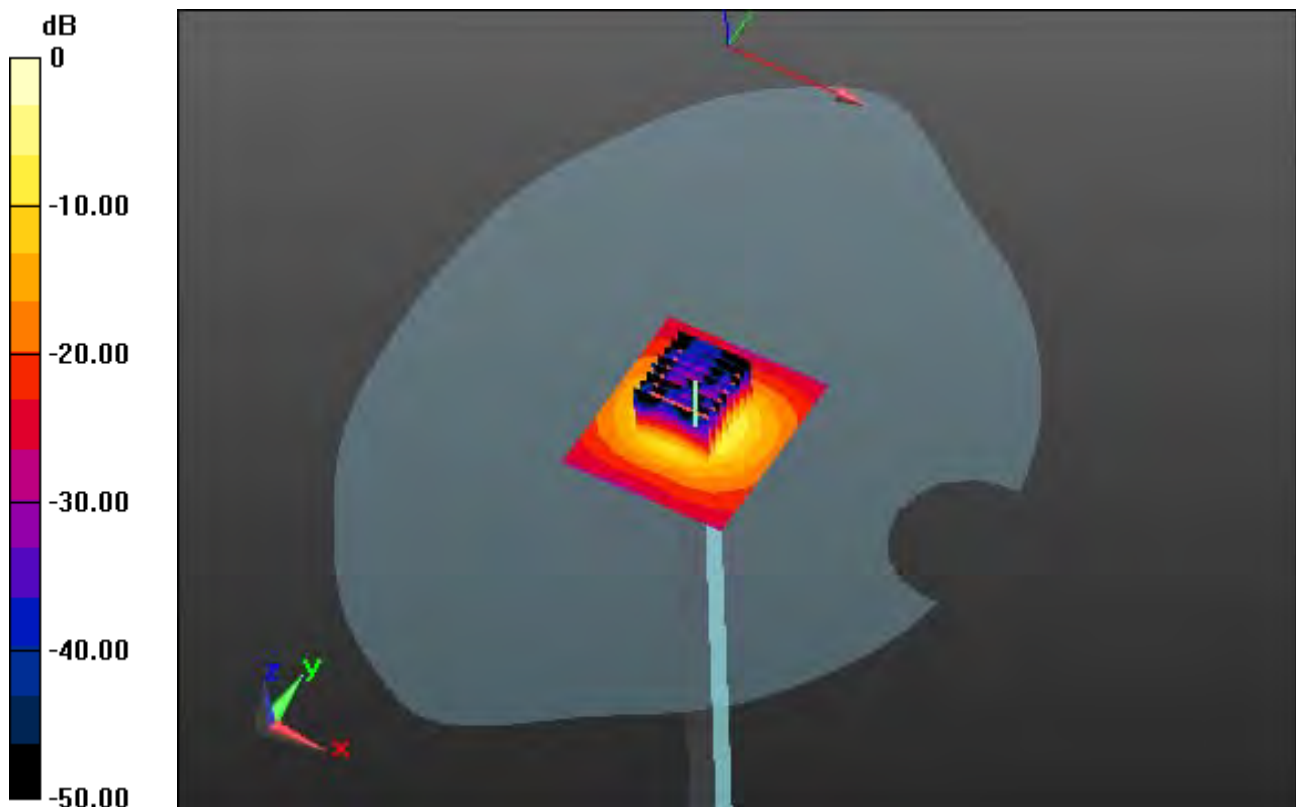
Area Scan (7x8x1): Measurement grid: dx=10mm, dy=10mm

Zoom Scan (8x8x7)/Cube 0: Measurement grid: dx=4mm, dy=4mm, dz=1.4mm, Graded Ratio: 1.4

Power Drift = -0.05 dB

Peak SAR (extrapolated) = 36.1 W/kg

SAR(1 g) = 8.17 W/kg; SAR(10 g) = 2.33 W/kg



0 dB = 20.0 W/kg

DT&C Co., Ltd.

DUT: Dipole 5000 MHz; Type: D5GHzV2; Serial: D5GHzV2 - SN:1103

Communication System: UID 0, CW (0); Frequency: 5800 MHz; Duty Cycle: 1:1
Medium parameters used: $f = 5800$ MHz; $\sigma = 6.159$ S/m; $\epsilon_r = 47.432$; $\rho = 1000$ kg/m³
Phantom section: Flat Section

DASY5 Configuration:

Probe: EX3DV4 - SN3930; ConvF(4.33, 4.33, 4.33); Calibrated: 7/26/2017; Electronics: DAE4 Sn1335
Sensor-Surface: 1.4mm (Mechanical Surface Detection)
Phantom: SAM with CRP_2016_07_22_middle; Type: QD000P40CD; Serial: TP:1786
Measurement SW: DASY52, Version 52.8 (8); SEMCAD X Version 14.6.10 (7331)

Test Date: 2017-10-19; Ambient Temp: 21.9; Tissue Temp: 22.2

5800 MHz System Body Verification

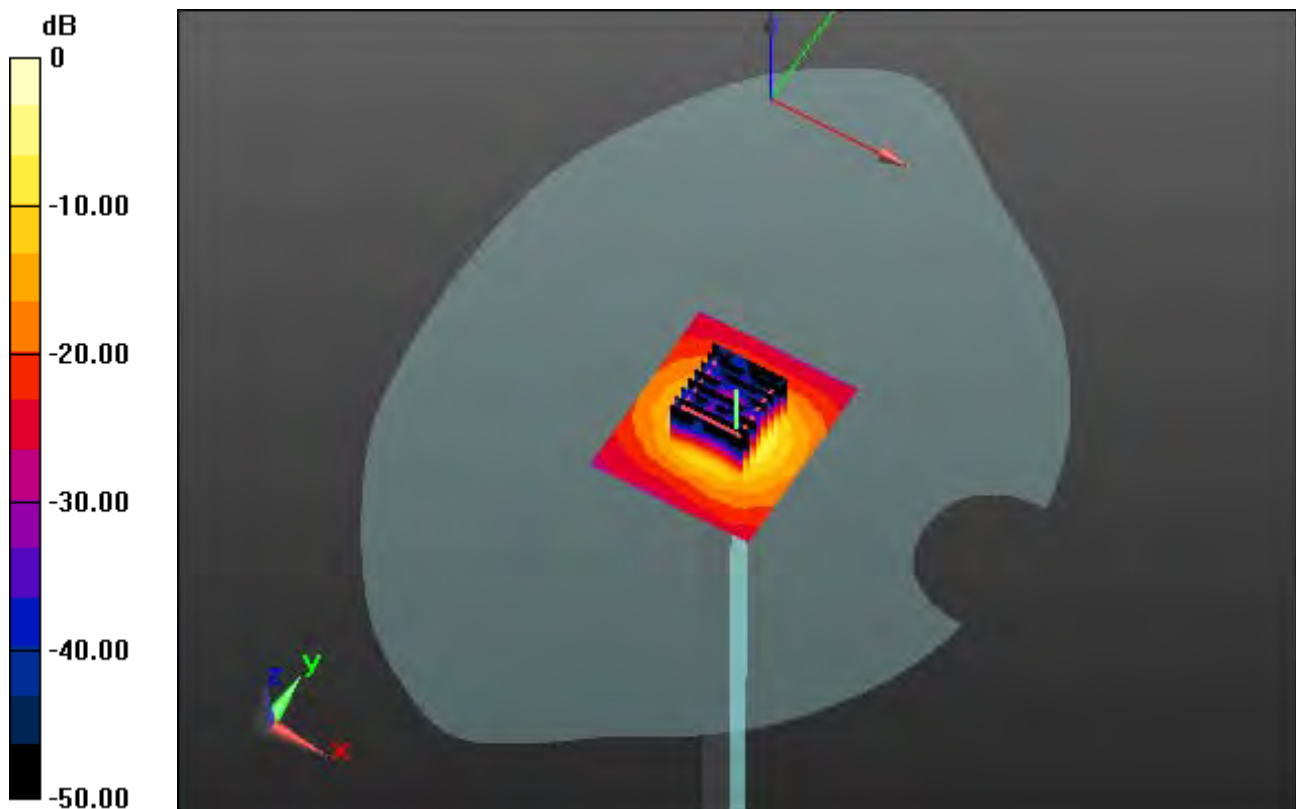
Area Scan (7x8x1): Measurement grid: dx=10mm, dy=10mm

Zoom Scan (8x8x7)/Cube 0: Measurement grid: dx=4mm, dy=4mm, dz=1.4mm, Graded Ratio: 1.4

Power Drift = -0.17 dB

Peak SAR (extrapolated) = 38.4 W/kg

SAR(1 g) = 7.9 W/kg; SAR(10 g) = 2.18 W/kg



0 dB = 19.7 W/kg

DT&C Co., Ltd.

DUT: DM-01K; Type: Bar

Communication System: UID 0, GSM 850 (0); Frequency: 836.6 MHz; Duty Cycle: 1:8.3

Medium parameters used: $f = 836.6$ MHz; $\sigma = 0.879$ S/m; $\epsilon_r = 40.598$; $\rho = 1000$ kg/m³

Phantom section: Left Section

DASY5 Configuration:

Probe: ES3DV3 - SN3328; ConvF(6.5, 6.5, 6.5); Calibrated: 3/21/2017; Electronics: DAE3 Sn519
Sensor-Surface: 3mm (Mechanical Surface Detection)

Phantom: SAM-twin right_2013_09_24; Type: QD000P40CD; Serial: TP:1783

Measurement SW: DASY52, Version 52.8 (8); SEMCAD X Version 14.6.10 (7331)

Test Date: 2017-10-16; Ambient Temp: 22.3; Tissue Temp: 22.1

Left Touch, GSM850 Ch. 190, Ant Internal, Standard Battery

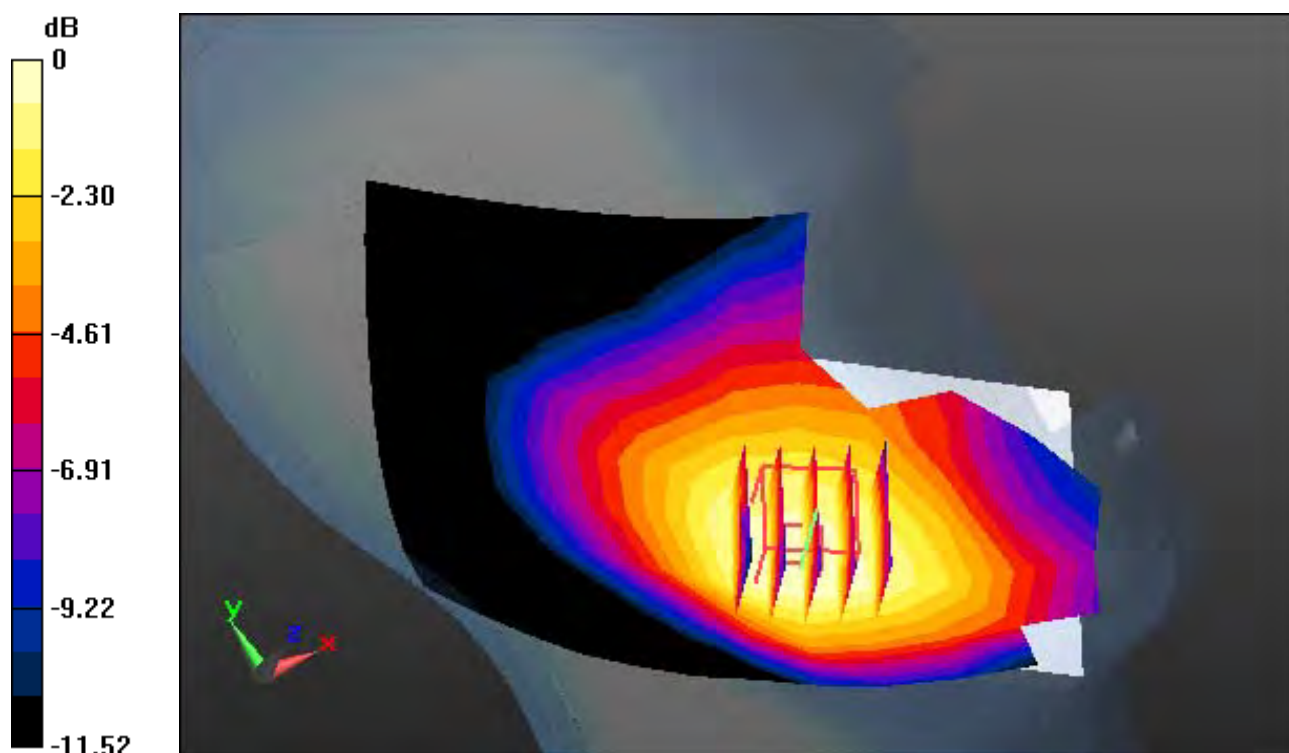
Area Scan (9x13x1): Measurement grid: dx=15mm, dy=15mm

Zoom Scan (5x5x7)/Cube 0: Measurement grid: dx=8mm, dy=8mm, dz=5mm

Power Drift = 0.17 dB

Peak SAR (extrapolated) = 0.245 W/kg

SAR(1 g) = 0.188 W/kg; SAR(10 g) = 0.143 W/kg



0 dB = 0.205 W/kg

DT&C Co., Ltd.

DUT: DM-01K; Type: Bar

Communication System: UID 0, GSM 850_11 (0); Frequency: 836.6 MHz; Duty Cycle: 1:2.77
Medium parameters used: $f = 836.6$ MHz; $\sigma = 0.898$ S/m; $\epsilon_r = 40.207$; $\rho = 1000$ kg/m³
Phantom section: Left Section

DASY5 Configuration:

Probe: ES3DV3 - SN3327; ConvF(6.49, 6.49, 6.49); Calibrated: 9/18/2017; Electronics: DAE4 Sn1396
Sensor-Surface: 3mm (Mechanical Surface Detection)
Phantom: SAM-twin right_2013_09_24; Type: QD000P40CD; Serial: TP:1783
Measurement SW: DASY52, Version 52.8 (8); SEMCAD X Version 14.6.10 (7331)

Test Date: 2017-11-30; Ambient Temp: 20.9; Tissue Temp: 20.8

Left Touch, GSM850 GPRS 3 Tx Ch. 190, Ant Internal, Standard Battery

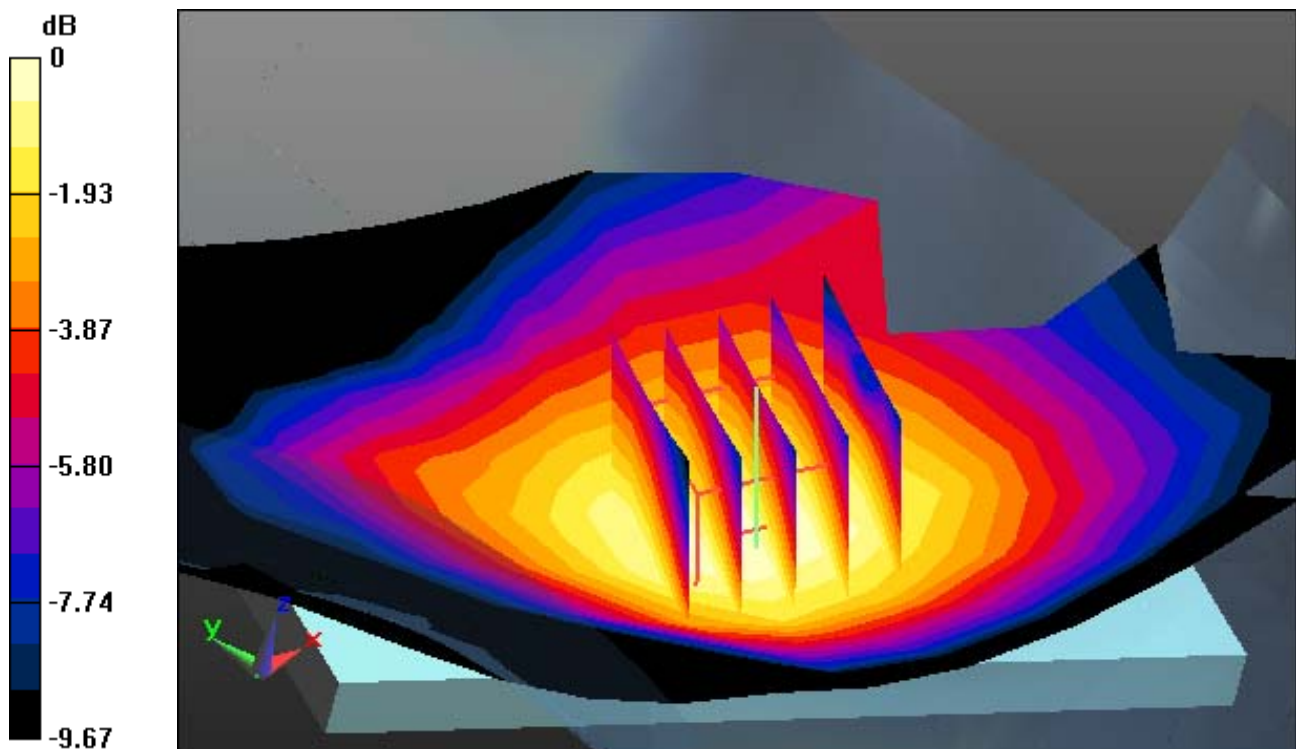
Area Scan (9x13x1): Measurement grid: dx=15mm, dy=15mm

Zoom Scan (5x5x7)/Cube 0: Measurement grid: dx=8mm, dy=8mm, dz=5mm

Power Drift = 0.16 dB

Peak SAR (extrapolated) = 0.264 W/kg

SAR(1 g) = 0.216 W/kg; SAR(10 g) = 0.168 W/kg



0 dB = 0.234 W/kg

DT&C Co., Ltd.

DUT: DM-01K; Type: Bar

Communication System: UID 0, PCS 1900 (0); Frequency: 1880 MHz; Duty Cycle: 1:8.3
Medium parameters used: $f = 1880$ MHz; $\sigma = 1.427$ S/m; $\epsilon_r = 40.454$; $\rho = 1000$ kg/m³
Phantom section: Left Section

DASY5 Configuration:

Probe: ES3DV3 - SN3328; ConvF(5.27, 5.27, 5.27); Calibrated: 3/21/2017; Electronics: DAE3 Sn519
Sensor-Surface: 3mm (Mechanical Surface Detection)
Phantom: SAM-twin middle_2013_09_24; Type: QD000P40CD; Serial: 1782
Measurement SW: DASY52, Version 52.8 (8); SEMCAD X Version 14.6.10 (7331)

Test Date: 2017-10-18; Ambient Temp: 21.4; Tissue Temp: 21.2

Left Touch, PCS1900 Ch. 661, Ant Internal, Standard Battery

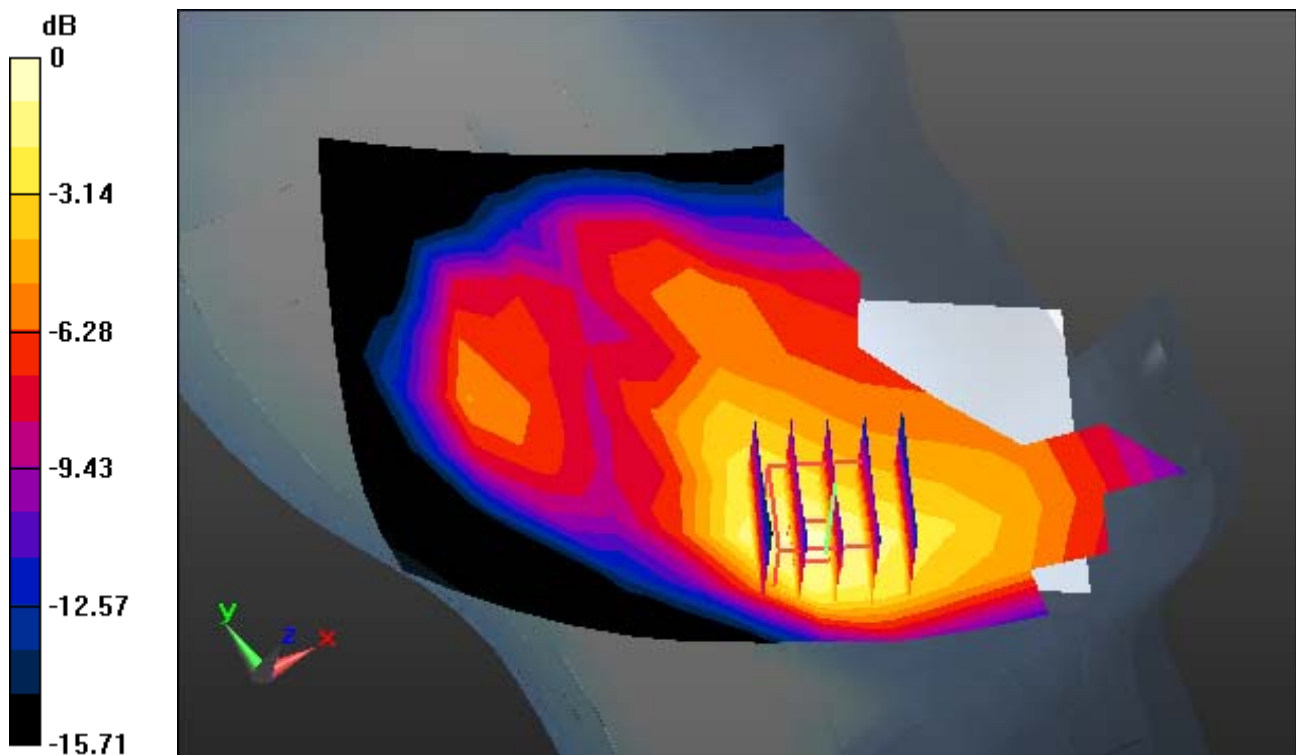
Area Scan (9x13x1): Measurement grid: dx=15mm, dy=15mm

Zoom Scan (5x5x7)/Cube 0: Measurement grid: dx=8mm, dy=8mm, dz=5mm

Power Drift = 0.13 dB

Peak SAR (extrapolated) = 0.192 W/kg

SAR(1 g) = 0.117 W/kg; SAR(10 g) = 0.070 W/kg



0 dB = 0.141 W/kg

DT&C Co., Ltd.

DUT: DM-01K; Type: Bar

Communication System: UID 0, PCS1900_Class 11 (0); Frequency: 1880 MHz; Duty Cycle: 1:2.77
Medium parameters used: $f = 1880$ MHz; $\sigma = 1.425$ S/m; $\epsilon_r = 41.055$; $\rho = 1000$ kg/m³
Phantom section: Left Section

DASY5 Configuration:

Probe: ES3DV3 - SN3328; ConvF(5.27, 5.27, 5.27); Calibrated: 3/21/2017; Electronics: DAE3 Sn519
Sensor-Surface: 3mm (Mechanical Surface Detection)
Phantom: SAM with CRP_2016_07_22_middle; Type: QD000P40CD; Serial: TP:1786
Measurement SW: DASY52, Version 52.8 (8); SEMCAD X Version 14.6.10 (7331)

Test Date: 2017-11-30; Ambient Temp: 21.6; Tissue Temp: 22.4

Left Touch, PCS1900 GPRS 3 Tx Ch. 661, Ant Internal, Standard Battery

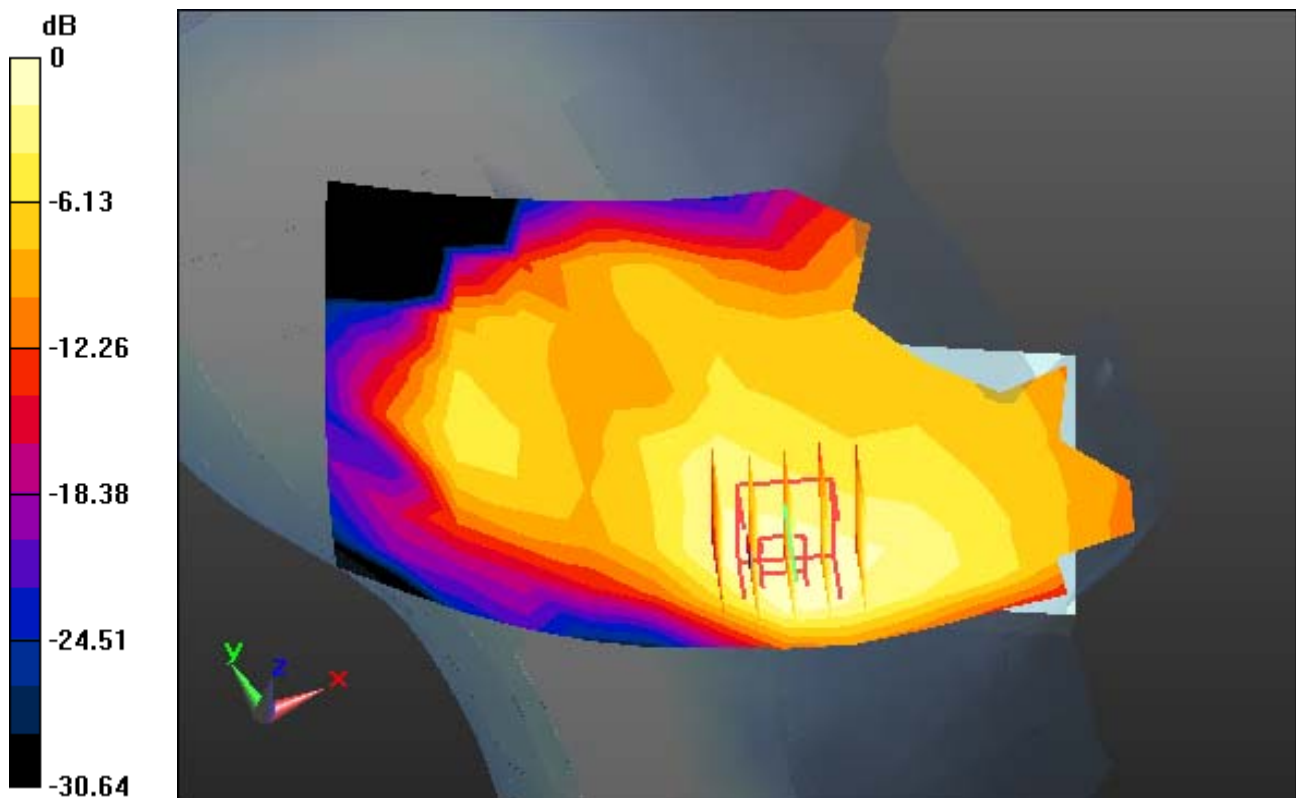
Area Scan (9x13x1): Measurement grid: dx=15mm, dy=15mm

Zoom Scan (5x5x7)/Cube 0: Measurement grid: dx=8mm, dy=8mm, dz=5mm

Power Drift = 0.11 dB

Peak SAR (extrapolated) = 0.267 W/kg

SAR(1 g) = 0.164 W/kg; SAR(10 g) = 0.099 W/kg



0 dB = 0.194 W/kg

DT&C Co., Ltd.

DUT: DM-01K; Type: Bar

Communication System: UID 0, WCDMA 850 (0); Frequency: 836.6 MHz; Duty Cycle: 1:1
Medium parameters used: $f = 836.6$ MHz; $\sigma = 0.879$ S/m; $\epsilon_r = 40.598$; $\rho = 1000$ kg/m³
Phantom section: Left Section

DASY5 Configuration:

Probe: ES3DV3 - SN3328; ConvF(6.5, 6.5, 6.5); Calibrated: 3/21/2017; Electronics: DAE3 Sn519
Sensor-Surface: 3mm (Mechanical Surface Detection)
Phantom: SAM-twin right_2013_09_24; Type: QD000P40CD; Serial: TP:1783
Measurement SW: DASY52, Version 52.8 (8); SEMCAD X Version 14.6.10 (7331)

Test Date: 2017-10-16; Ambient Temp: 22.3; Tissue Temp: 22.1

Left Touch, WCDMA Band 5 Ch. 4183, Ant Internal, Standard Battery

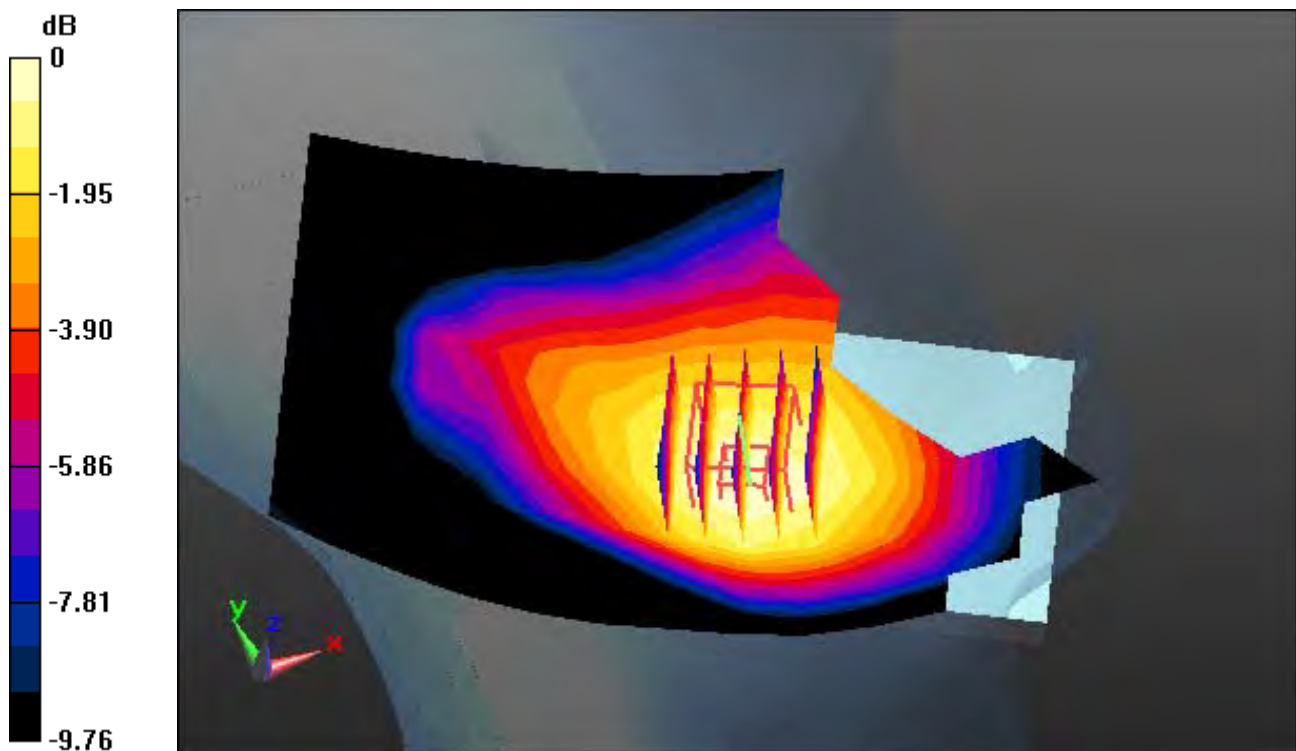
Area Scan (9x13x1): Measurement grid: dx=15mm, dy=15mm

Zoom Scan (5x5x7)/Cube 0: Measurement grid: dx=8mm, dy=8mm, dz=5mm

Power Drift = 0.13 dB

Peak SAR (extrapolated) = 0.257 W/kg

SAR(1 g) = 0.204 W/kg; SAR(10 g) = 0.158 W/kg



0 dB = 0.222 W/kg

DT&C Co., Ltd.

DUT: DM-01K; Type: Bar

Communication System: UID 0, 2.4 GHz W-LAN (0); Frequency: 2437 MHz; Duty Cycle: 1:1
Medium parameters used: $f = 2437$ MHz; $\sigma = 1.772$ S/m; $\epsilon_r = 38.675$; $\rho = 1000$ kg/m³
Phantom section: Right Section

DASY5 Configuration:

Probe: EX3DV4 - SN3930; ConvF(7.87, 7.87, 7.87); Calibrated: 7/26/2017; Electronics: DAE4 Sn1335
Sensor-Surface: 2mm (Mechanical Surface Detection)
Phantom: SAM with CRP_2016_07_22_middle; Type: QD000P40CD; Serial: TP:1786
Measurement SW: DASY52, Version 52.8 (8); SEMCAD X Version 14.6.10 (7331)

Test Date: 2017-10-13; Ambient Temp: 21.3; Tissue Temp: 21.8

Right Touch, W-LAN(2.4G 802.11b) Ch. 6, Ant Internal, Standard Battery

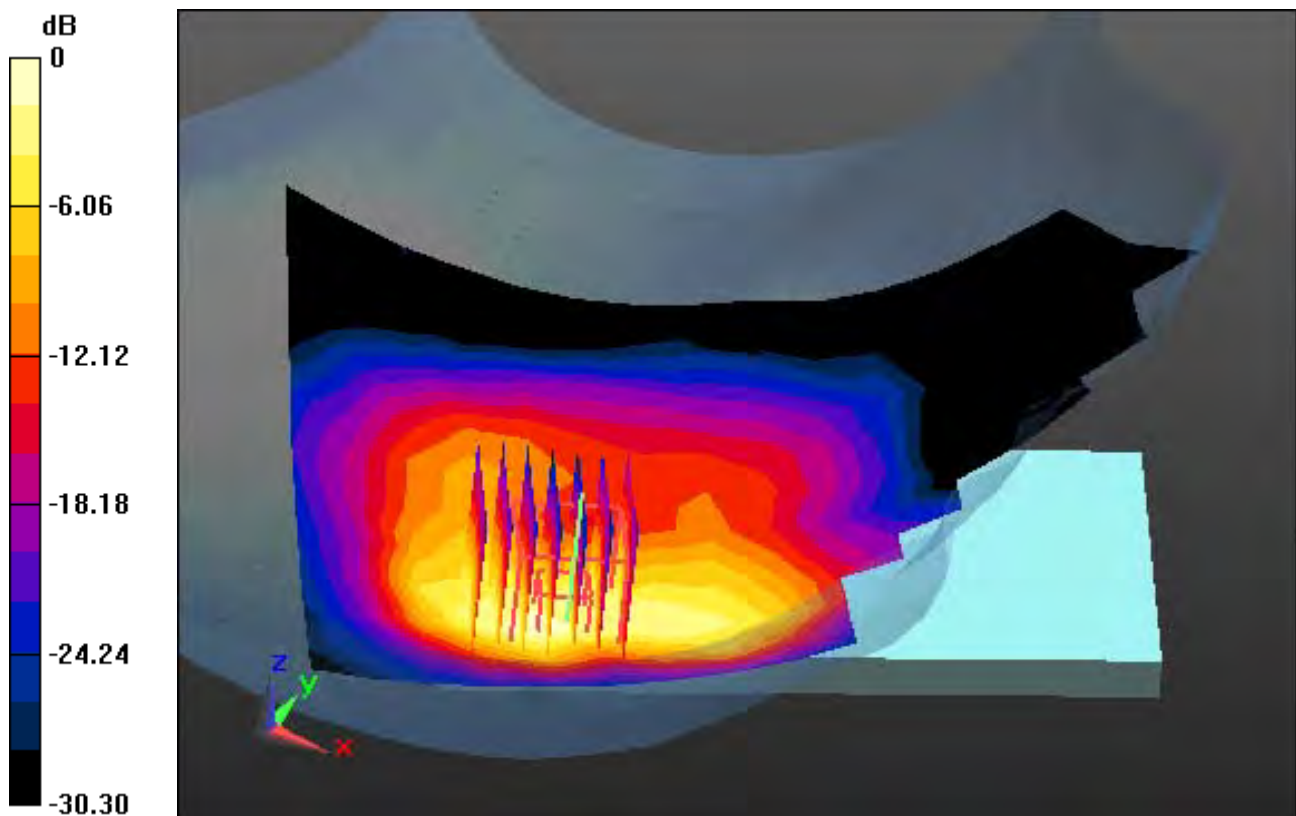
Area Scan (11x16x1): Measurement grid: dx=12mm, dy=12mm

Zoom Scan (7x7x7)/Cube 0: Measurement grid: dx=5mm, dy=5mm, dz=5mm

Power Drift = 0.08 dB

Peak SAR (extrapolated) = 1.93 W/kg

SAR(1 g) = 0.727 W/kg; SAR(10 g) = 0.298 W/kg



0 dB = 1.22 W/kg

DT&C Co., Ltd.

DUT: DM-01K; Type: Bar

Communication System: UID 0, W-LAN 5G (0); Frequency: 5260 MHz; Duty Cycle: 1:1
Medium parameters used: $f = 5260 \text{ MHz}$; $\sigma = 4.706 \text{ S/m}$; $\epsilon_r = 35.593$; $\rho = 1000 \text{ kg/m}^3$
Phantom section: Right Section

DASY5 Configuration:

Probe: EX3DV4 - SN3930; ConvF(5.24, 5.24, 5.24); Calibrated: 7/26/2017; Electronics: DAE4 Sn1335
Sensor-Surface: 1.4mm (Mechanical Surface Detection)
Phantom: SAM with CRP_2016_07_22_middle; Type: QD000P40CD; Serial: TP:1786
Measurement SW: DASY52, Version 52.8 (8); SEMCAD X Version 14.6.10 (7331)

Test Date: 2017-10-17; Ambient Temp: 21.8; Tissue Temp: 22.0

Right Touch, W-LAN(5.3G 802.11a) Ch. 52, Ant Internal, Standard Battery

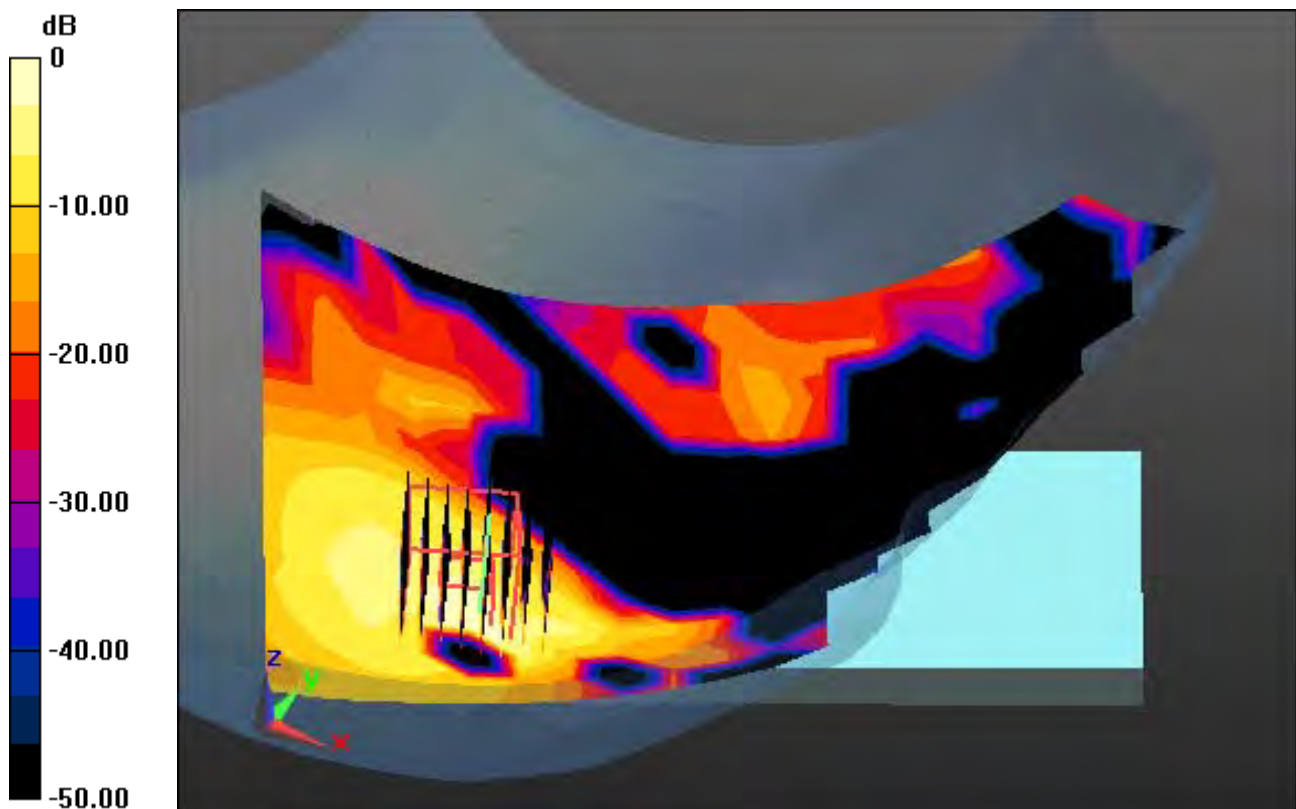
Area Scan (13x20x1): Measurement grid: $dx=10\text{mm}$, $dy=10\text{mm}$

Zoom Scan (8x8x7)/Cube 0: Measurement grid: $dx=4\text{mm}$, $dy=4\text{mm}$, $dz=1.4\text{mm}$, Graded Ratio: 1.4

Power Drift = 0.09 dB

Peak SAR (extrapolated) = 0.527 W/kg

SAR(1 g) = 0.099 W/kg; SAR(10 g) = 0.026 W/kg



0 dB = 0.306 W/kg

DT&C Co., Ltd.

DUT: DM-01K; Type: Bar

Communication System: UID 0, W-LAN 5G (0); Frequency: 5500 MHz; Duty Cycle: 1:1
Medium parameters used: $f = 5500$ MHz; $\sigma = 4.872$ S/m; $\epsilon_r = 34.602$; $\rho = 1000$ kg/m³
Phantom section: Right Section

DASY5 Configuration:

Probe: EX3DV4 - SN3930; ConvF(4.97, 4.97, 4.97); Calibrated: 7/26/2017; Electronics: DAE4 Sn1335
Sensor-Surface: 1.4mm (Mechanical Surface Detection)
Phantom: SAM with CRP_2016_07_22_middle; Type: QD000P40CD; Serial: TP:1786
Measurement SW: DASY52, Version 52.8 (8); SEMCAD X Version 14.6.10 (7331)

Test Date: 2017-10-18; Ambient Temp: 21.6; Tissue Temp: 21.9

Right Touch, W-LAN(5.6G 802.11a) Ch. 100, Ant Internal, Standard Battery

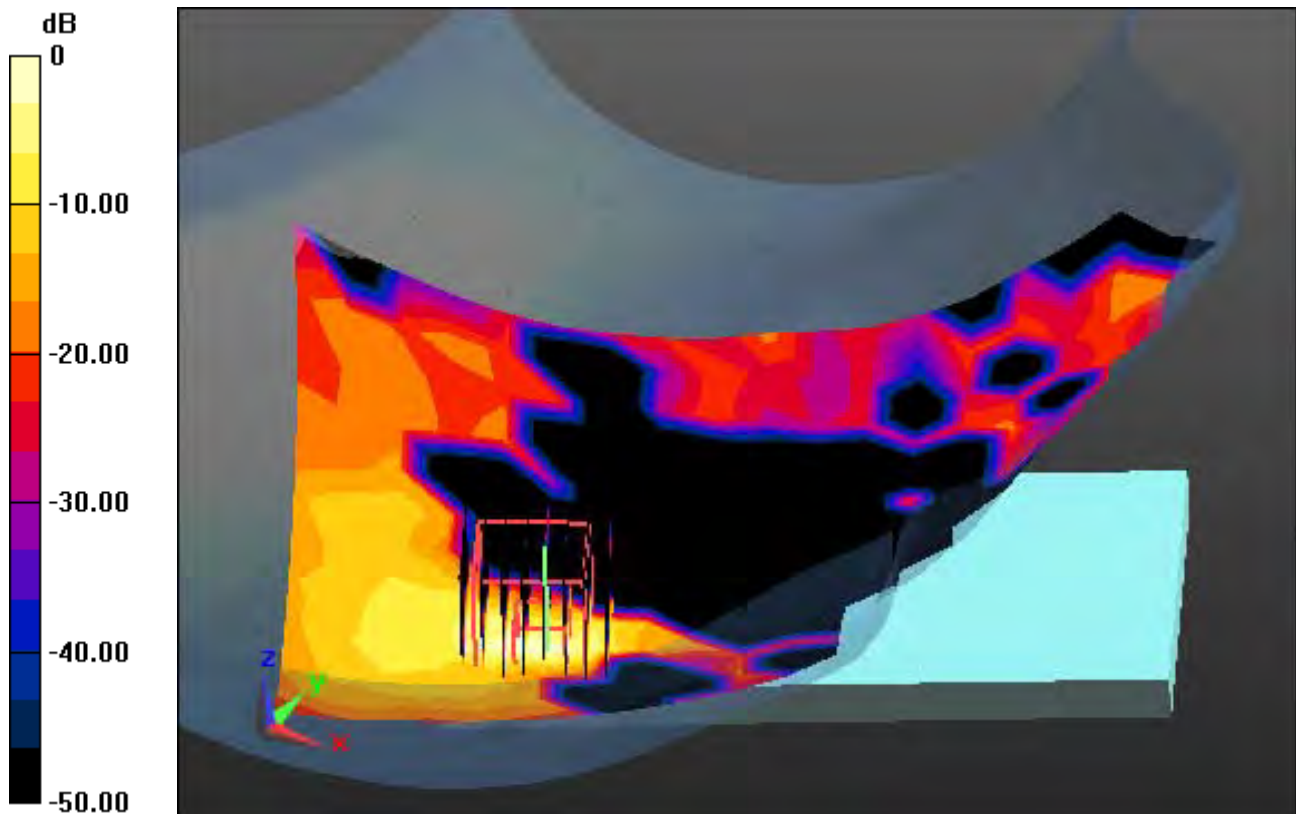
Area Scan (13x20x1): Measurement grid: dx=10mm, dy=10mm

Zoom Scan (8x8x7)/Cube 0: Measurement grid: dx=4mm, dy=4mm, dz=1.4mm, Graded Ratio: 1.4

Power Drift = 0.00 dB

Peak SAR (extrapolated) = 0.598 W/kg

SAR(1 g) = 0.091 W/kg; SAR(10 g) = 0.023 W/kg



0 dB = 0.372 W/kg

DT&C Co., Ltd.

DUT: DM-01K; Type: Bar

Communication System: UID 0, W-LAN 5G (0); Frequency: 5785 MHz; Duty Cycle: 1:1
Medium parameters used: $f = 5785$ MHz; $\sigma = 5.191$ S/m; $\epsilon_r = 34.156$; $\rho = 1000$ kg/m³
Phantom section: Right Section

DASY5 Configuration:

Probe: EX3DV4 - SN3930; ConvF(4.83, 4.83, 4.83); Calibrated: 7/26/2017; Electronics: DAE4 Sn1335
Sensor-Surface: 1.4mm (Mechanical Surface Detection)
Phantom: SAM with CRP_2016_07_22_middle; Type: QD000P40CD; Serial: TP:1786
Measurement SW: DASY52, Version 52.8 (8); SEMCAD X Version 14.6.10 (7331)

Test Date: 2017-10-19; Ambient Temp: 21.9; Tissue Temp: 22.4

Right Touch, W-LAN(5.8G 802.11a) Ch. 157, Ant Internal, Standard Battery

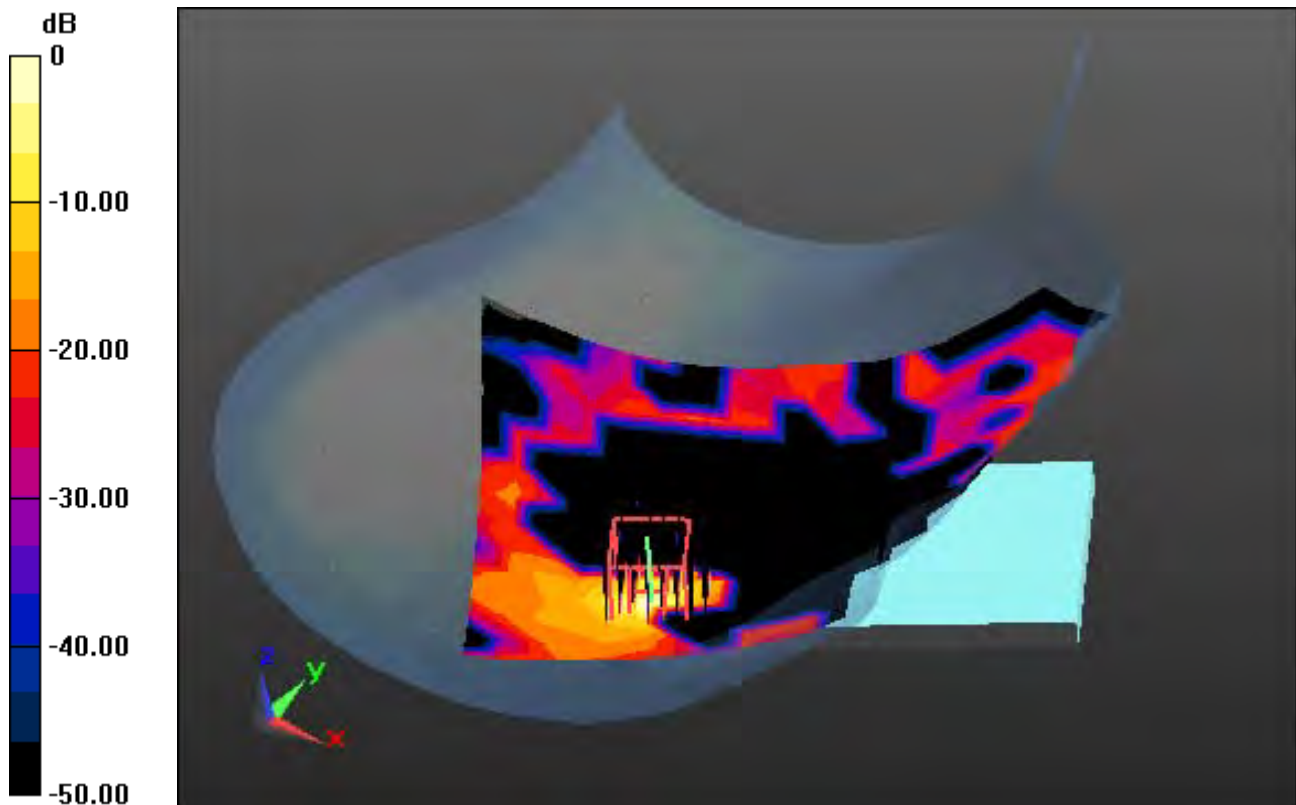
Area Scan (13x20x1): Measurement grid: dx=10mm, dy=10mm

Zoom Scan (8x8x7)/Cube 0: Measurement grid: dx=4mm, dy=4mm, dz=1.4mm, Graded Ratio: 1.4

Power Drift = 0.00 dB

Peak SAR (extrapolated) = 1.08 W/kg

SAR(1 g) = 0.154 W/kg; SAR(10 g) = 0.033 W/kg



0 dB = 0.689 W/kg

DT&C Co., Ltd.

DUT: DM-01K; Type: Bar

Communication System: UID 0, Bluetooth (0); Frequency: 2441 MHz; Duty Cycle: 1:1.3

Medium parameters used: $f = 2441$ MHz; $\sigma = 1.776$ S/m; $\epsilon_r = 38.664$; $\rho = 1000$ kg/m³

Phantom section: Right Section

DASY5 Configuration:

Probe: EX3DV4 - SN3930; ConvF(7.87, 7.87, 7.87); Calibrated: 7/26/2017; Electronics: DAE4 Sn1335

Sensor-Surface: 2mm (Mechanical Surface Detection)

Phantom: SAM with CRP_2016_07_22_middle; Type: QD000P40CD; Serial: TP:1786

Measurement SW: DASY52, Version 52.8 (8); SEMCAD X Version 14.6.10 (7331)

Test Date: 2017-10-13; Ambient Temp: 21.3; Tissue Temp: 21.8

Right Touch, Bluetooth(BDR 1M) Ch. 39, Ant Internal, Standard Battery

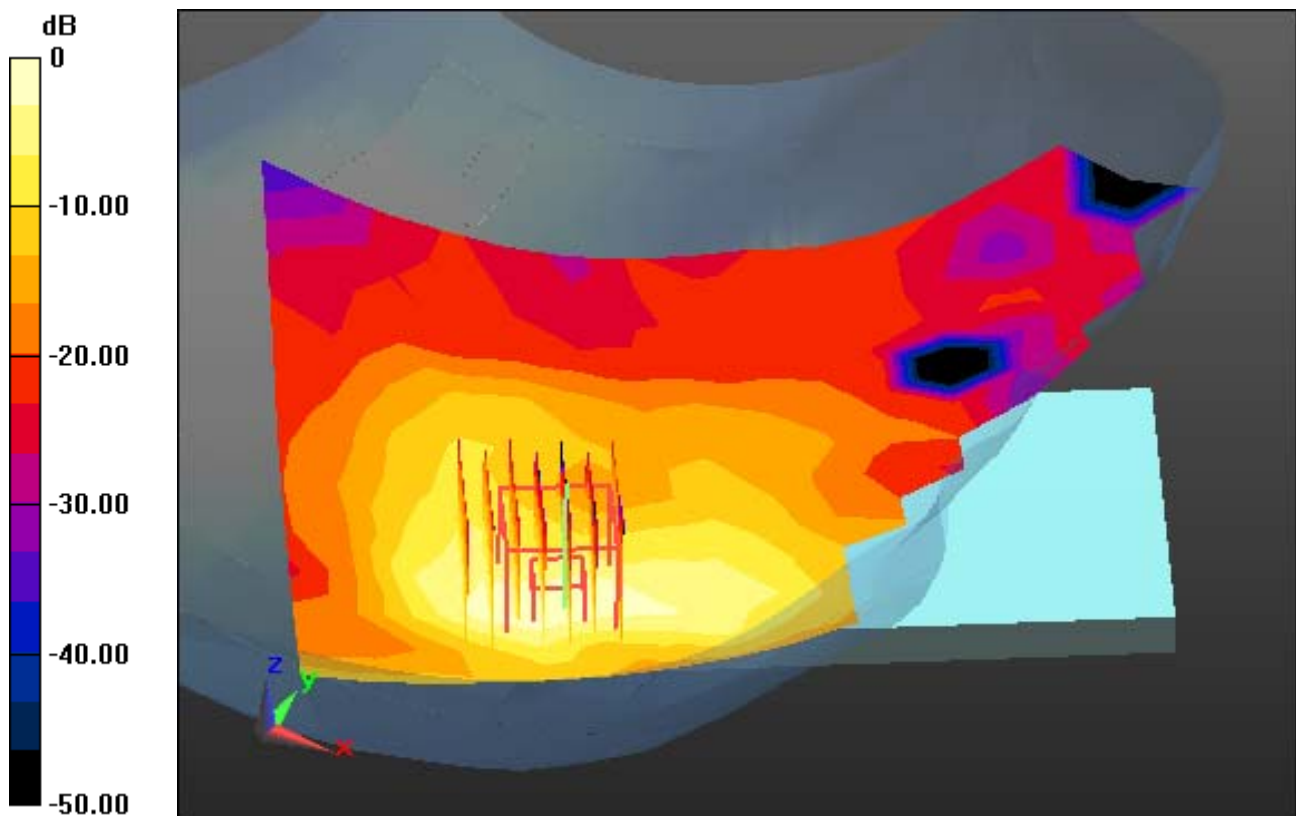
Area Scan (11x16x1): Measurement grid: dx=12mm, dy=12mm

Zoom Scan (7x7x7)/Cube 0: Measurement grid: dx=5mm, dy=5mm, dz=5mm

Power Drift = -0.19 dB

Peak SAR (extrapolated) = 0.385 W/kg

SAR(1 g) = 0.141 W/kg; SAR(10 g) = 0.057 W/kg



0 dB = 0.248 W/kg

DT&C Co., Ltd.

DUT: DM-01K; Type: Bar

Communication System: UID 0, GSM 850 (0); Frequency: 836.6 MHz; Duty Cycle: 1:8.3

Medium parameters used: $f = 836.6$ MHz; $\sigma = 1.003$ S/m; $\epsilon_r = 53.405$; $\rho = 1000$ kg/m³

Phantom section: Flat Section

DASY5 Configuration:

Probe: ES3DV3 - SN3328; ConvF(6.35, 6.35, 6.35); Calibrated: 3/21/2017; Electronics: DAE3 Sn519

Sensor-Surface: 3mm (Mechanical Surface Detection)

Phantom: SAM-twin right_2013_09_24; Type: QD000P40CD; Serial: TP:1783

Measurement SW: DASY52, Version 52.8 (8); SEMCAD X Version 14.6.10 (7331)

Test Date: 2017-10-17; Ambient Temp: 21.1; Tissue Temp: 21.0

1 cm space from Body, Front, GSM850 Ch. 190, Ant. Internal

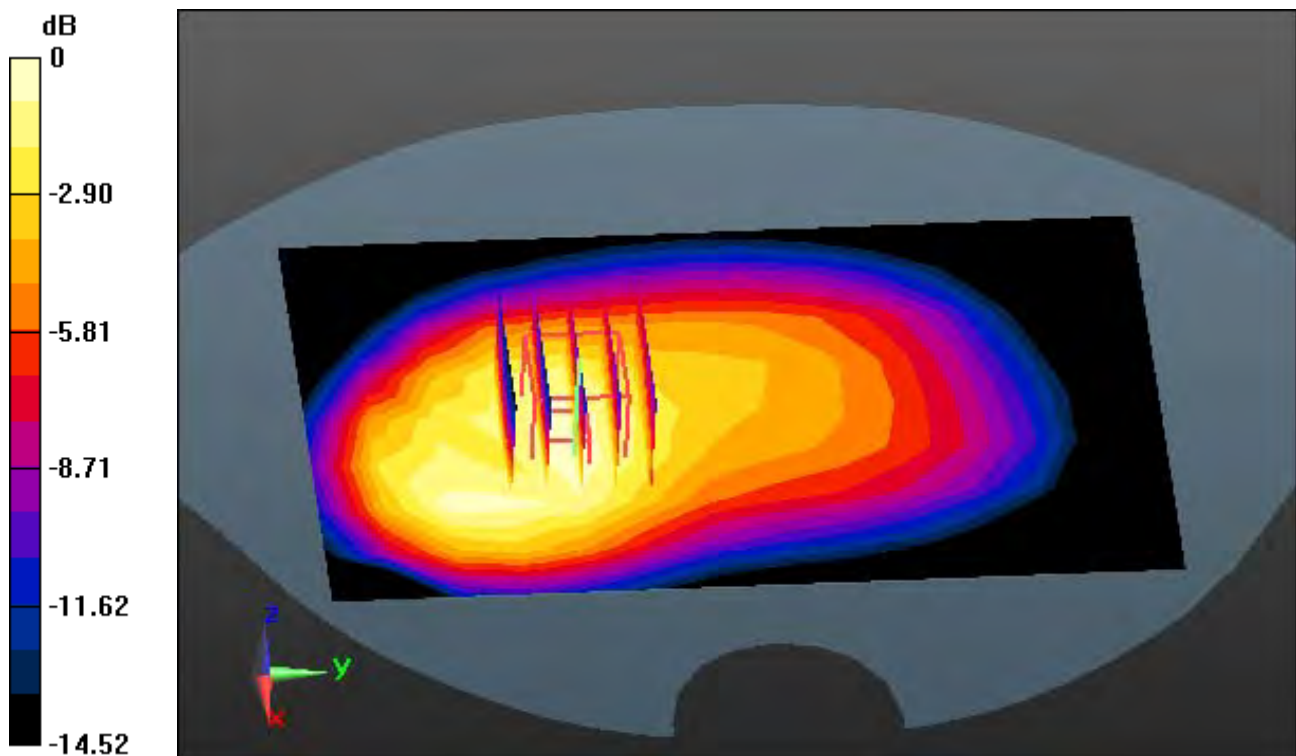
Area Scan (9x14x1): Measurement grid: dx=15mm, dy=15mm

Zoom Scan (6x5x7)/Cube 0: Measurement grid: dx=8mm, dy=8mm, dz=5mm

Power Drift = -0.11 dB

Peak SAR (extrapolated) = 0.678 W/kg

SAR(1 g) = 0.437 W/kg; SAR(10 g) = 0.291 W/kg



0 dB = 0.505 W/kg

DT&C Co., Ltd.

DUT: DM-01K; Type: Bar

Communication System: UID 0, GSM 850_11 (0); Frequency: 836.6 MHz; Duty Cycle: 1:2.77

Medium parameters used: $f = 836.6$ MHz; $\sigma = 0.996$ S/m; $\epsilon_r = 53.207$; $\rho = 1000$ kg/m³

Phantom section: Flat Section

DASY5 Configuration:

Probe: ES3DV3 - SN3327; ConvF(6.31, 6.31, 6.31); Calibrated: 9/18/2017; Electronics: DAE4 Sn1396

Sensor-Surface: 3mm (Mechanical Surface Detection)

Phantom: SAM-twin right_2013_09_24; Type: QD000P40CD; Serial: TP:1783

Measurement SW: DASY52, Version 52.8 (8); SEMCAD X Version 14.6.10 (7331)

Test Date: 2017-11-30; Ambient Temp: 20.9; Tissue Temp: 21.1

1 cm space from Body, Front, GSM850 GPRS 3 Tx Ch. 190, Ant Internal

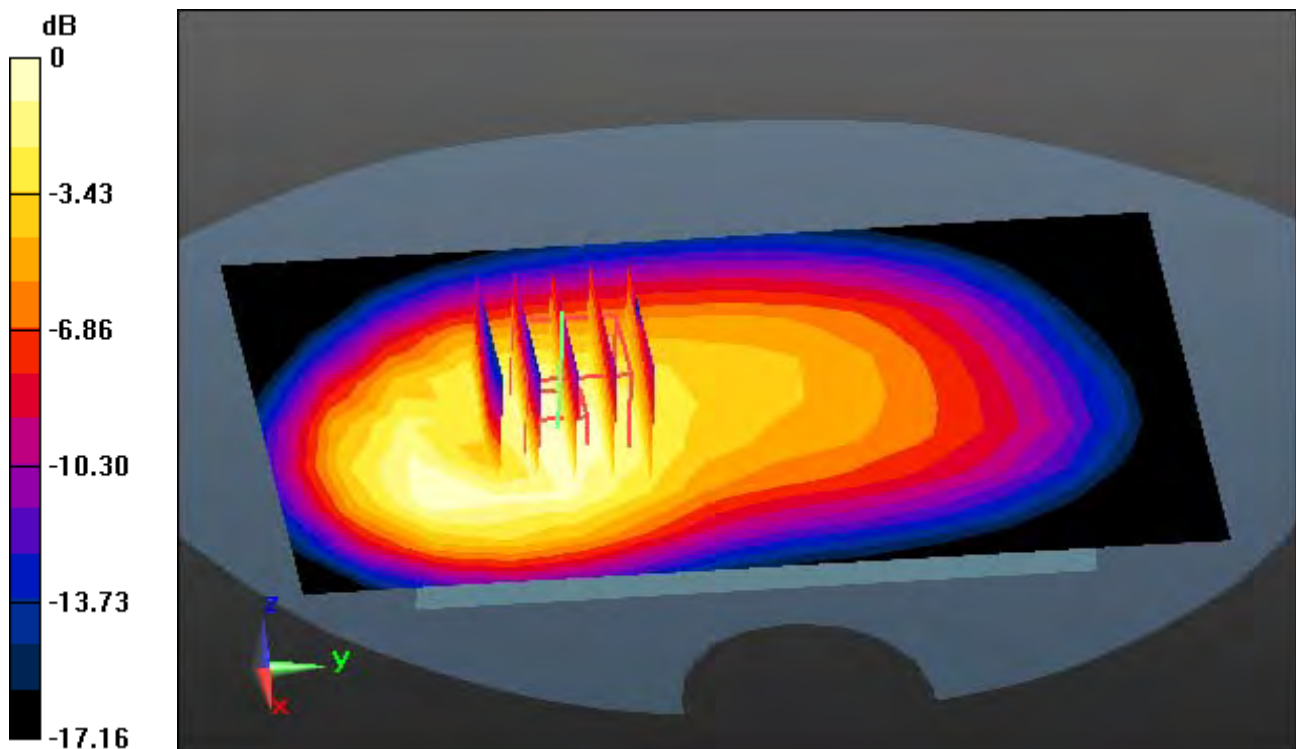
Area Scan (9x14x1): Measurement grid: dx=15mm, dy=15mm

Zoom Scan (6x5x7)/Cube 0: Measurement grid: dx=8mm, dy=8mm, dz=5mm

Power Drift = -0.03 dB

Peak SAR (extrapolated) = 1.05 W/kg

SAR(1 g) = 0.662 W/kg; SAR(10 g) = 0.431 W/kg



0 dB = 0.769 W/kg

DT&C Co., Ltd.

DUT: DM-01K; Type: Bar

Communication System: UID 0, PCS 1900 (0); Frequency: 1880 MHz; Duty Cycle: 1:8.3

Medium parameters used: $f = 1880$ MHz; $\sigma = 1.525$ S/m; $\epsilon_r = 52.813$; $\rho = 1000$ kg/m³

Phantom section: Flat Section

DASY5 Configuration:

Probe: ES3DV3 - SN3328; ConvF(4.91, 4.91, 4.91); Calibrated: 3/21/2017; Electronics: DAE3 Sn519

Sensor-Surface: 3mm (Mechanical Surface Detection)

Phantom: SAM-twin middle_2013_09_24; Type: QD000P40CD; Serial: 1782

Measurement SW: DASY52, Version 52.8 (8); SEMCAD X Version 14.6.10 (7331)

Test Date: 2017-10-18; Ambient Temp: 21.4; Tissue Temp: 21.3

1 cm space from Body, Rear, PCS1900 Ch. 661, Ant. Internal

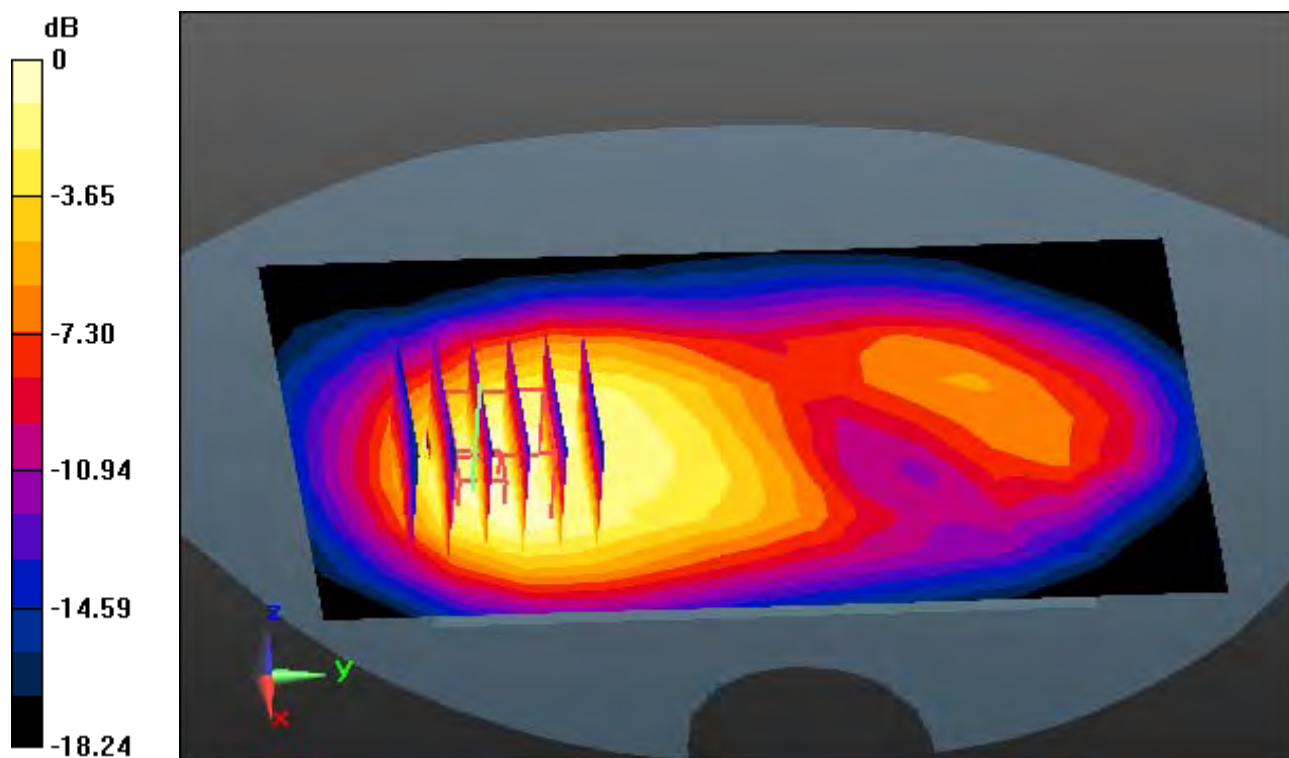
Area Scan (9x14x1): Measurement grid: dx=15mm, dy=15mm

Zoom Scan (6x6x7)/Cube 0: Measurement grid: dx=8mm, dy=8mm, dz=5mm

Power Drift = 0.04 dB

Peak SAR (extrapolated) = 0.395 W/kg

SAR(1 g) = 0.236 W/kg; SAR(10 g) = 0.141 W/kg



0 dB = 0.283 W/kg

DT&C Co., Ltd.

DUT: DM-01K; Type: Bar

Communication System: UID 0, PCS1900_Class 11 (0); Frequency: 1880 MHz; Duty Cycle: 1:2.77
Medium parameters used: $f = 1880$ MHz; $\sigma = 1.54$ S/m; $\epsilon_r = 52.45$; $\rho = 1000$ kg/m³
Phantom section: Flat Section

DASY5 Configuration:

Probe: ES3DV3 - SN3328; ConvF(4.91, 4.91, 4.91); Calibrated: 3/21/2017; Electronics: DAE3 Sn519
Sensor-Surface: 3mm (Mechanical Surface Detection)
Phantom: SAM with CRP_2016_07_22_middle; Type: QD000P40CD; Serial: TP:1786
Measurement SW: DASY52, Version 52.8 (8); SEMCAD X Version 14.6.10 (7331)

Test Date: 2017-11-30; Ambient Temp: 21.6; Tissue Temp: 22.2

1 cm space from Body, Rear, PCS1900 GPRS 3 Tx Ch. 661, Ant Internal

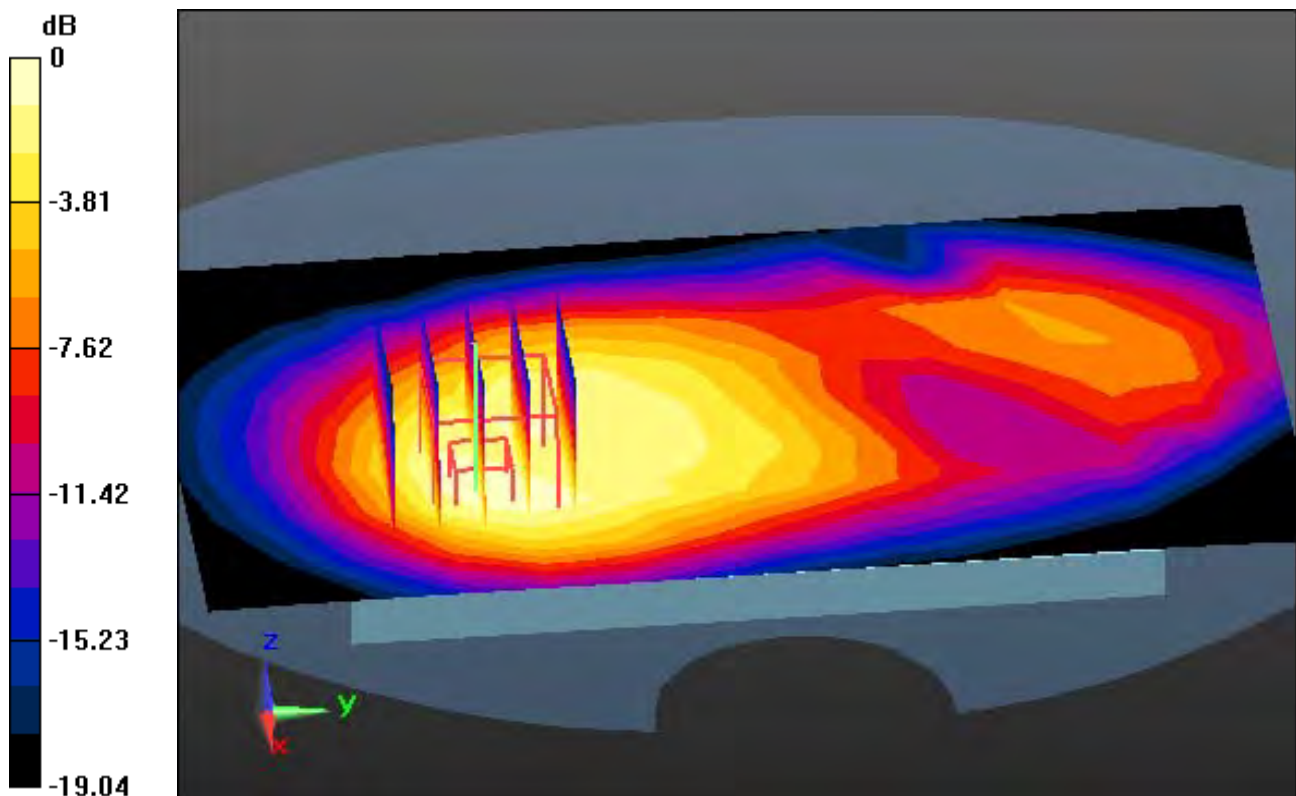
Area Scan (9x14x1): Measurement grid: dx=15mm, dy=15mm

Zoom Scan (5x5x7)/Cube 0: Measurement grid: dx=8mm, dy=8mm, dz=5mm

Power Drift = 0.01 dB

Peak SAR (extrapolated) = 0.728 W/kg

SAR(1 g) = 0.434 W/kg; SAR(10 g) = 0.251 W/kg



0 dB = 0.537 W/kg

DT&C Co., Ltd.

DUT: DM-01K; Type: Bar

Communication System: UID 0, WCDMA 850 (0); Frequency: 836.6 MHz; Duty Cycle: 1:1
Medium parameters used: $f = 836.6$ MHz; $\sigma = 1.003$ S/m; $\epsilon_r = 53.405$; $\rho = 1000$ kg/m³
Phantom section: Flat Section

DASY5 Configuration:

Probe: ES3DV3 - SN3328; ConvF(6.35, 6.35, 6.35); Calibrated: 3/21/2017; Electronics: DAE3 Sn519
Sensor-Surface: 3mm (Mechanical Surface Detection)
Phantom: SAM-twin right_2013_09_24; Type: QD000P40CD; Serial: TP:1783
Measurement SW: DASY52, Version 52.8 (8); SEMCAD X Version 14.6.10 (7331)

Test Date: 2017-10-17; Ambient Temp: 21.1; Tissue Temp: 21.0

1 cm space from Body, Front, WCDMA Band 5 Ch. 4183, Ant. Internal

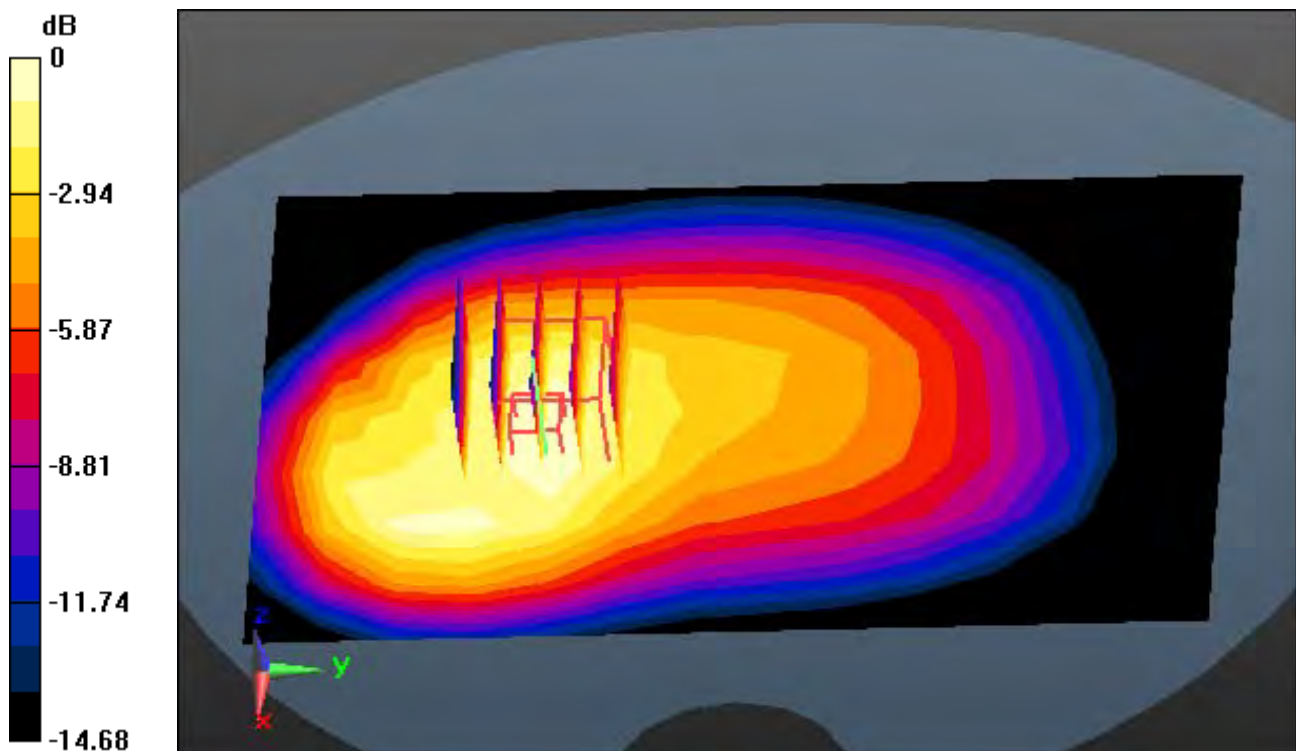
Area Scan (9x14x1): Measurement grid: dx=15mm, dy=15mm

Zoom Scan (5x5x7)/Cube 0: Measurement grid: dx=8mm, dy=8mm, dz=5mm

Power Drift = -0.04 dB

Peak SAR (extrapolated) = 0.756 W/kg

SAR(1 g) = 0.496 W/kg; SAR(10 g) = 0.332 W/kg



0 dB = 0.563 W/kg

DT&C Co., Ltd.

DUT: DM-01K; Type: Bar

Communication System: UID 0, 2.4 GHz W-LAN (0); Frequency: 2437 MHz; Duty Cycle: 1:1
Medium parameters used: $f = 2437$ MHz; $\sigma = 1.97$ S/m; $\epsilon_r = 52.522$; $\rho = 1000$ kg/m³
Phantom section: Flat Section

DASY5 Configuration:

Probe: EX3DV4 - SN3930; ConvF(7.9, 7.9, 7.9); Calibrated: 7/26/2017; Electronics: DAE4 Sn1335
Sensor-Surface: 2mm (Mechanical Surface Detection)
Phantom: SAM with CRP_2016_07_22_middle; Type: QD000P40CD; Serial: TP:1786
Measurement SW: DASY52, Version 52.8 (8); SEMCAD X Version 14.6.10 (7331)

Test Date: 2017-10-13; Ambient Temp: 21.3; Tissue Temp: 22.0

1 cm space from Body, Front, W-LAN(2.4G 802.11b) Ch. 6, Ant Internal

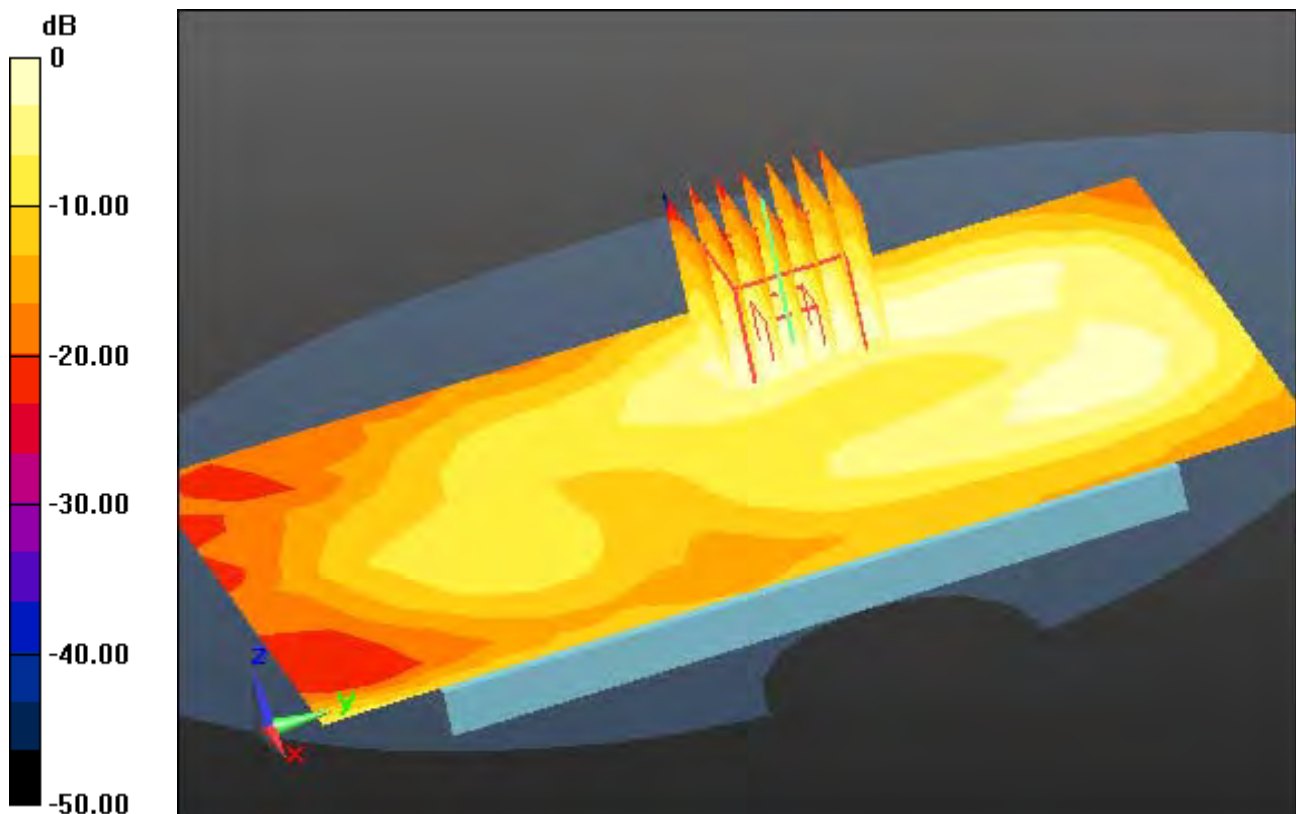
Area Scan (11x17x1): Measurement grid: dx=12mm, dy=12mm

Zoom Scan (7x7x7)/Cube 0: Measurement grid: dx=5mm, dy=5mm, dz=5mm

Power Drift = -0.07 dB

Peak SAR (extrapolated) = 0.241 W/kg

SAR(1 g) = 0.122 W/kg; SAR(10 g) = 0.060 W/kg



0 dB = 0.183 W/kg

DT&C Co., Ltd.

DUT: DM-01K; Type: Bar

Communication System: UID 0, W-LAN 5G (0); Frequency: 5260 MHz; Duty Cycle: 1:1
Medium parameters used: $f = 5260$ MHz; $\sigma = 5.419$ S/m; $\epsilon_r = 49.519$; $\rho = 1000$ kg/m³
Phantom section: Flat Section

DASY5 Configuration:

Probe: EX3DV4 - SN3930; ConvF(4.7, 4.7, 4.7); Calibrated: 7/26/2017; Electronics: DAE4 Sn1335
Sensor-Surface: 1.4mm (Mechanical Surface Detection)
Phantom: SAM with CRP_2016_07_22_middle; Type: QD000P40CD; Serial: TP:1786
Measurement SW: DASY52, Version 52.8 (8); SEMCAD X Version 14.6.10 (7331)

Test Date: 2017-10-17; Ambient Temp: 21.8; Tissue Temp: 22.1

1 cm space from Body, Rear, W-LAN(5.3G 802.11a) Ch. 52, Ant Internal

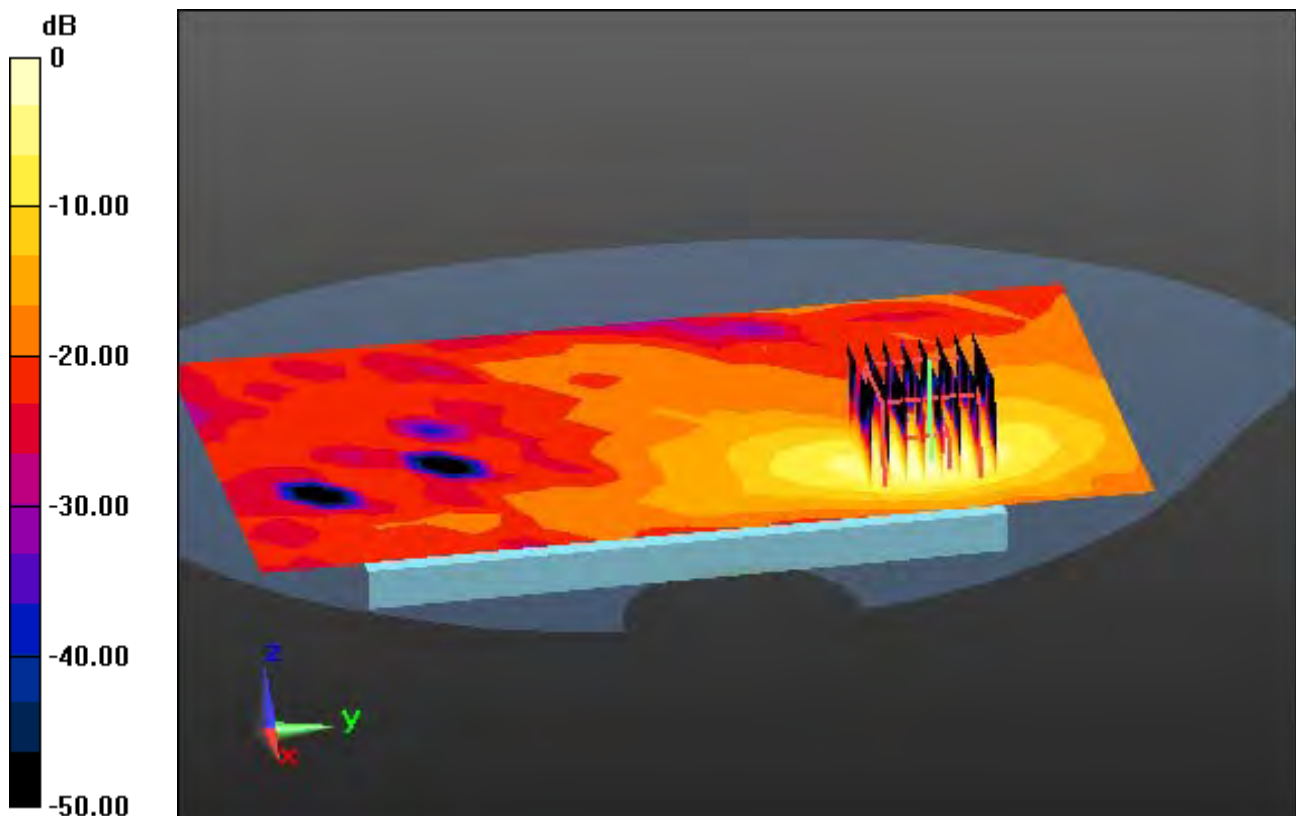
Area Scan (13x21x1): Measurement grid: dx=10mm, dy=10mm

Zoom Scan (8x8x7)/Cube 0: Measurement grid: dx=4mm, dy=4mm, dz=1.4mm, Graded Ratio: 1.4

Power Drift = -0.04 dB

Peak SAR (extrapolated) = 1.71 W/kg

SAR(1 g) = 0.420 W/kg; SAR(10 g) = 0.126 W/kg



0 dB = 0.982 W/kg

DT&C Co., Ltd.

DUT: DM-01K; Type: Bar

Communication System: UID 0, W-LAN 5G (0); Frequency: 5500 MHz; Duty Cycle: 1:1
Medium parameters used: $f = 5500$ MHz; $\sigma = 5.701$ S/m; $\epsilon_r = 47.572$; $\rho = 1000$ kg/m³
Phantom section: Flat Section

DASY5 Configuration:

Probe: EX3DV4 - SN3930; ConvF(4.41, 4.41, 4.41); Calibrated: 7/26/2017; Electronics: DAE4 Sn1335
Sensor-Surface: 1.4mm (Mechanical Surface Detection)
Phantom: SAM with CRP_2016_07_22_middle; Type: QD000P40CD; Serial: TP:1786
Measurement SW: DASY52, Version 52.8 (8); SEMCAD X Version 14.6.10 (7331)

Test Date: 2017-10-18; Ambient Temp: 21.6; Tissue Temp: 22.0

1 cm space from Body, Rear, W-LAN(5.6G 802.11a) Ch. 100, Ant Internal

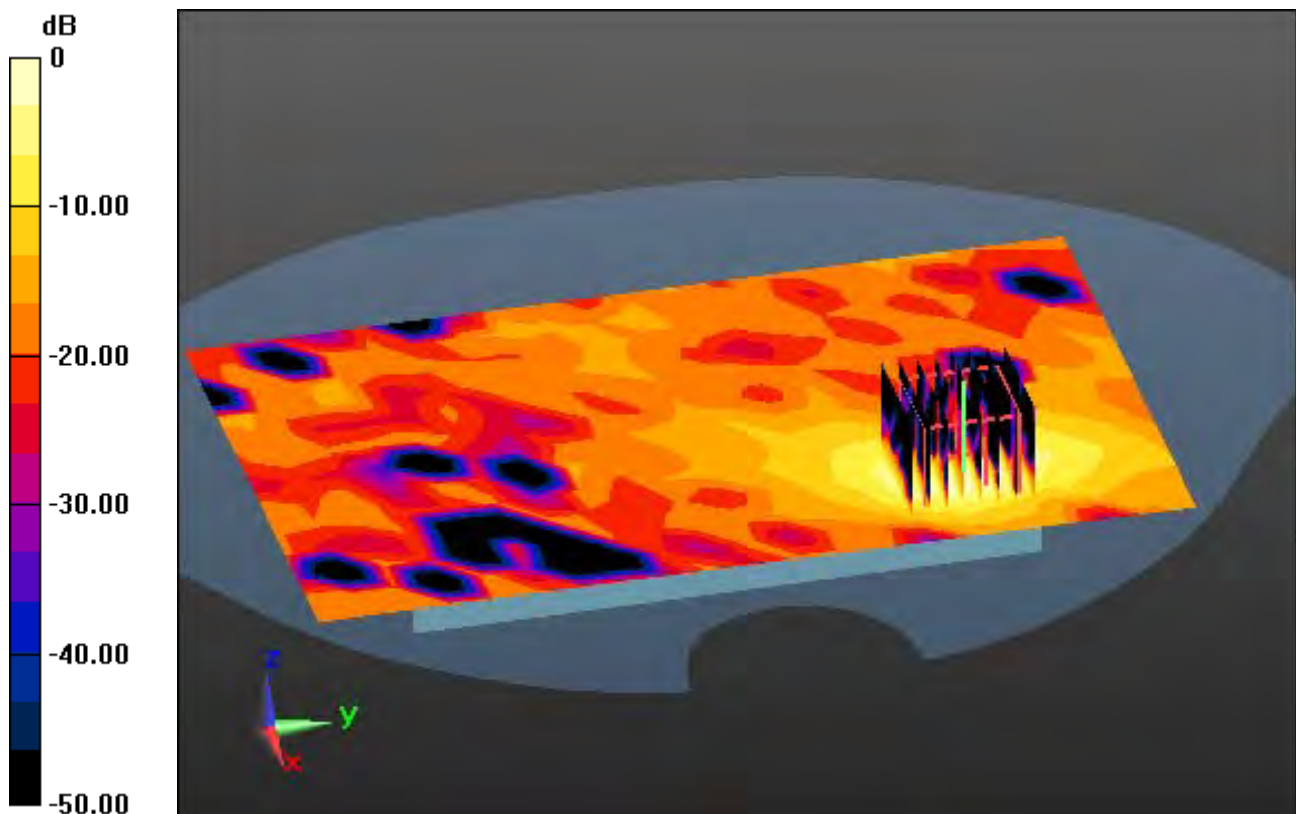
Area Scan (13x21x1): Measurement grid: dx=10mm, dy=10mm

Zoom Scan (8x8x7)/Cube 0: Measurement grid: dx=4mm, dy=4mm, dz=1.4mm, Graded Ratio: 1.4

Power Drift = -0.18 dB

Peak SAR (extrapolated) = 0.561 W/kg

SAR(1 g) = 0.125 W/kg; SAR(10 g) = 0.036 W/kg



0 dB = 0.334 W/kg

DT&C Co., Ltd.

DUT: DM-01K; Type: Bar

Communication System: UID 0, W-LAN 5G (0); Frequency: 5785 MHz; Duty Cycle: 1:1
Medium parameters used: $f = 5785$ MHz; $\sigma = 6.136$ S/m; $\epsilon_r = 47.451$; $\rho = 1000$ kg/m³
Phantom section: Flat Section

DASY5 Configuration:

Probe: EX3DV4 - SN3930; ConvF(4.33, 4.33, 4.33); Calibrated: 7/26/2017; Electronics: DAE4 Sn1335
Sensor-Surface: 1.4mm (Mechanical Surface Detection)
Phantom: SAM with CRP_2016_07_22_middle; Type: QD000P40CD; Serial: TP:1786
Measurement SW: DASY52, Version 52.8 (8); SEMCAD X Version 14.6.10 (7331)

Test Date: 2017-10-19; Ambient Temp: 21.9; Tissue Temp: 22.2

1 cm space from Body, Rear, W-LAN(5.8G 802.11a) Ch. 157, Ant Internal

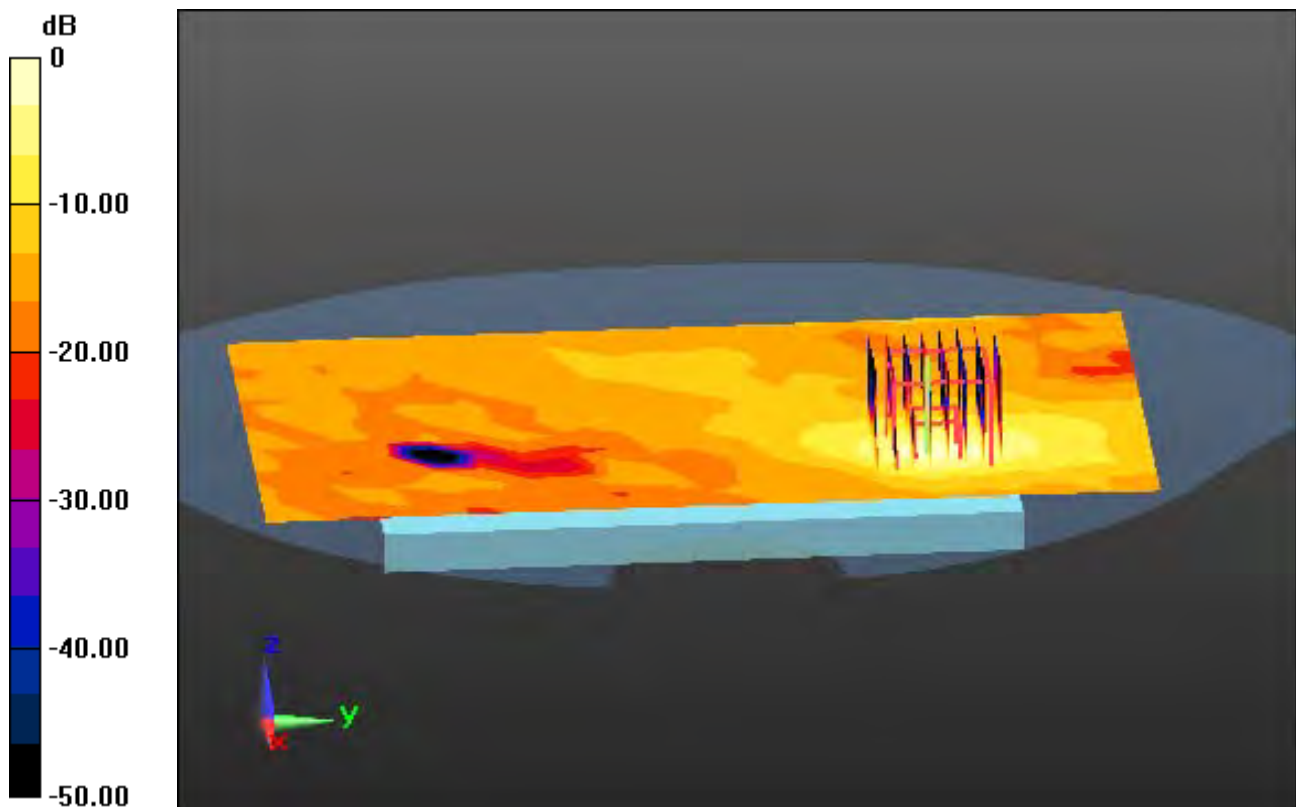
Area Scan (13x21x1): Measurement grid: dx=10mm, dy=10mm

Zoom Scan (8x8x7)/Cube 0: Measurement grid: dx=4mm, dy=4mm, dz=1.4mm, Graded Ratio: 1.4

Power Drift = -0.01 dB

Peak SAR (extrapolated) = 0.550 W/kg

SAR(1 g) = 0.122 W/kg; SAR(10 g) = 0.035 W/kg



0 dB = 0.319 W/kg

DT&C Co., Ltd.

DUT: DM-01K; Type: Bar

Communication System: UID 0, Bluetooth (0); Frequency: 2441 MHz; Duty Cycle: 1:1.3
Medium parameters used: $f = 2441$ MHz; $\sigma = 1.974$ S/m; $\epsilon_r = 52.512$; $\rho = 1000$ kg/m³
Phantom section: Flat Section

DASY5 Configuration:

Probe: EX3DV4 - SN3930; ConvF(7.9, 7.9, 7.9); Calibrated: 7/26/2017; Electronics: DAE4 Sn1335
Sensor-Surface: 2mm (Mechanical Surface Detection)
Phantom: SAM with CRP_2016_07_22_middle; Type: QD000P40CD; Serial: TP:1786
Measurement SW: DASY52, Version 52.8 (8); SEMCAD X Version 14.6.10 (7331)

Test Date: 2017-10-13; Ambient Temp: 21.3; Tissue Temp: 22.0

1 cm space from Body, Front, Bluetooth(BDR 1M) Ch. 39, Ant Internal

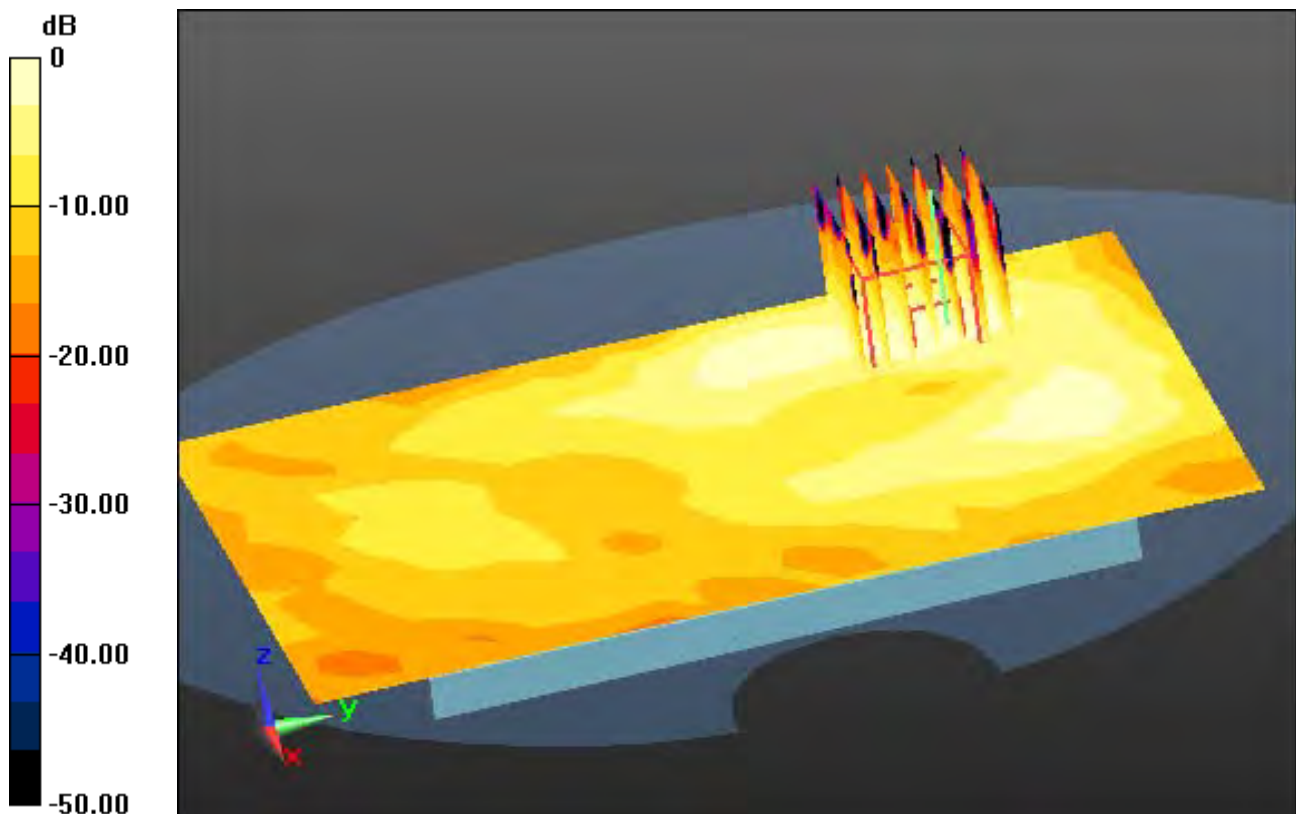
Area Scan (11x17x1): Measurement grid: dx=12mm, dy=12mm

Zoom Scan (7x7x7)/Cube 0: Measurement grid: dx=5mm, dy=5mm, dz=5mm

Power Drift = -0.07 dB

Peak SAR (extrapolated) = 0.0470 W/kg

SAR(1 g) = 0.024 W/kg; SAR(10 g) = 0.00964 W/kg



0 dB = 0.0350 W/kg

DT&C Co., Ltd.

DUT: DM-01K; Type: Bar

Communication System: UID 0, 2.4 GHz W-LAN (0); Frequency: 2437 MHz; Duty Cycle: 1:1
Medium parameters used: $f = 2437$ MHz; $\sigma = 1.97$ S/m; $\epsilon_r = 52.522$; $\rho = 1000$ kg/m³
Phantom section: Flat Section

DASY5 Configuration:

Probe: EX3DV4 - SN3930; ConvF(7.9, 7.9, 7.9); Calibrated: 7/26/2017; Electronics: DAE4 Sn1335
Sensor-Surface: 2mm (Mechanical Surface Detection)
Phantom: SAM with CRP_2016_07_22_middle; Type: QD000P40CD; Serial: TP:1786
Measurement SW: DASY52, Version 52.8 (8); SEMCAD X Version 14.6.10 (7331)

Test Date: 2017-10-13; Ambient Temp: 21.3; Tissue Temp: 22.0

1 cm space from Body, Left, W-LAN(2.4G 802.11b) Ch. 6, Ant Internal

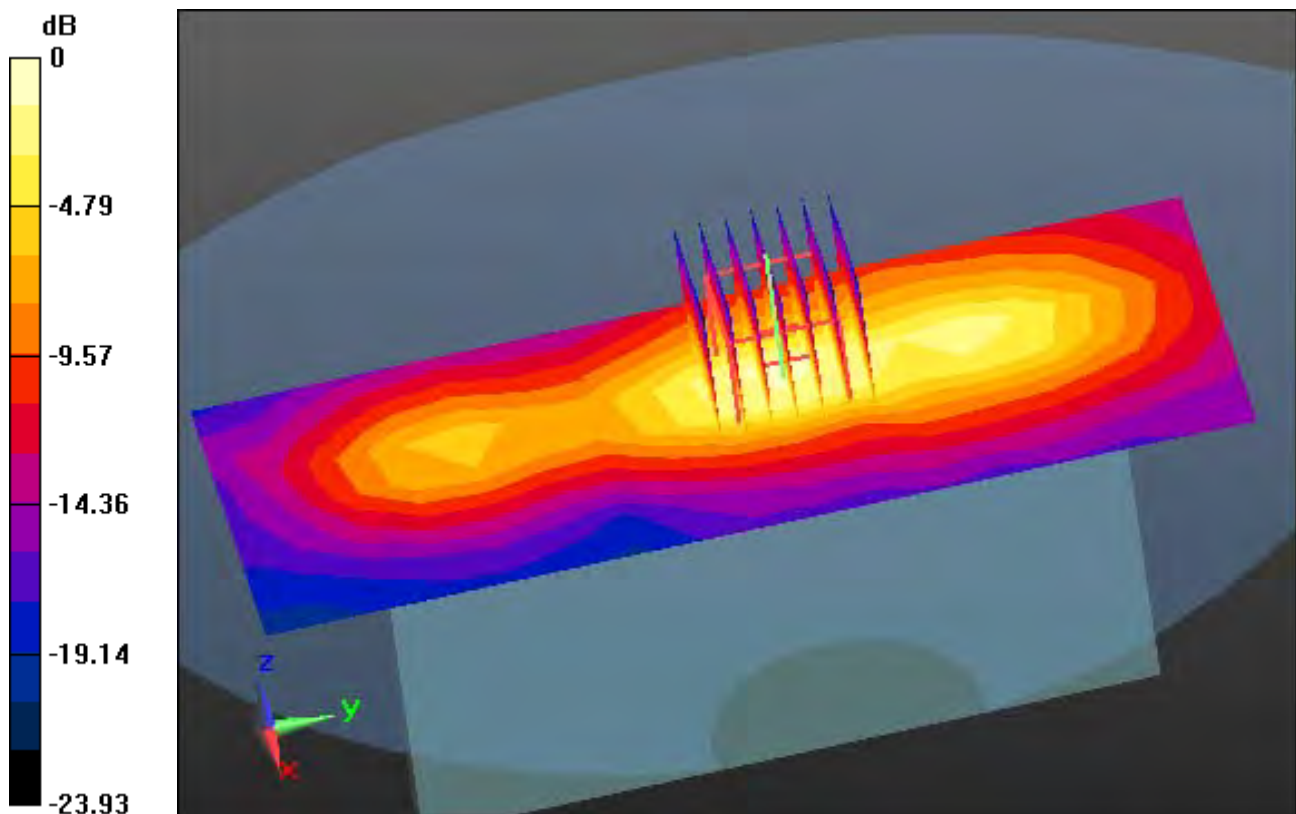
Area Scan (7x17x1): Measurement grid: dx=12mm, dy=12mm

Zoom Scan (7x7x7)/Cube 0: Measurement grid: dx=5mm, dy=5mm, dz=5mm

Power Drift = 0.13 dB

Peak SAR (extrapolated) = 0.343 W/kg

SAR(1 g) = 0.175 W/kg; SAR(10 g) = 0.085 W/kg



0 dB = 0.261 W/kg

DT&C Co., Ltd.

DUT: DM-01K; Type: Bar

Communication System: UID 0, W-LAN 5G (0); Frequency: 5180 MHz; Duty Cycle: 1:1
Medium parameters used: $f = 5180$ MHz; $\sigma = 5.468$ S/m; $\epsilon_r = 47.305$; $\rho = 1000$ kg/m³
Phantom section: Flat Section

DASY5 Configuration:

Probe: EX3DV4 - SN3930; ConvF(4.87, 4.87, 4.87); Calibrated: 7/26/2017; Electronics: DAE4 Sn1335
Sensor-Surface: 1.4mm (Mechanical Surface Detection)
Phantom: SAM with CRP_2016_07_22_middle; Type: QD000P40CD; Serial: TP:1786
Measurement SW: DASY52, Version 52.8 (8); SEMCAD X Version 14.6.10 (7331)

Test Date: 2017-10-16; Ambient Temp: 21.6; Tissue Temp: 22.2

1 cm space from Body, Rear, W-LAN(5.2G 802.11a) Ch. 36, Ant Internal

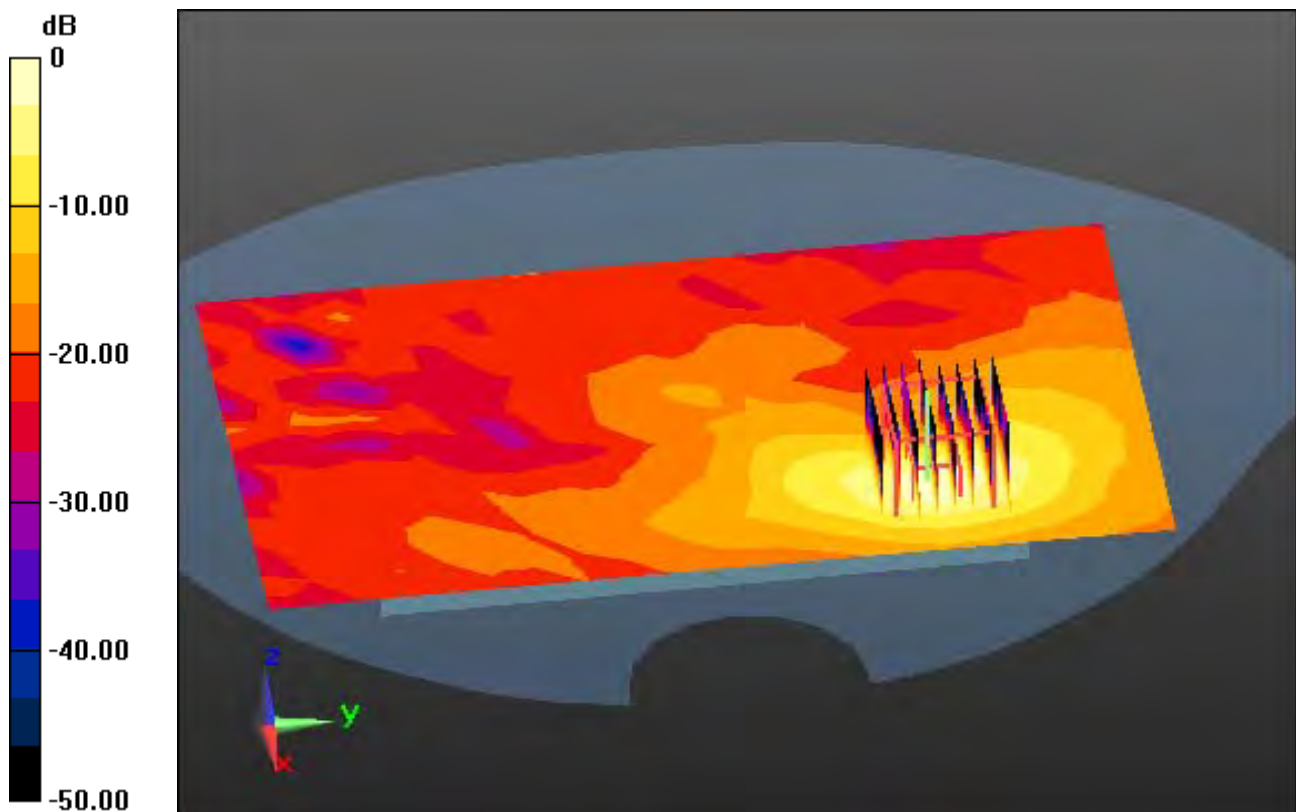
Area Scan (13x21x1): Measurement grid: dx=10mm, dy=10mm

Zoom Scan (8x8x7)/Cube 0: Measurement grid: dx=4mm, dy=4mm, dz=1.4mm, Graded Ratio: 1.4

Power Drift = -0.05 dB

Peak SAR (extrapolated) = 1.96 W/kg

SAR(1 g) = 0.494 W/kg; SAR(10 g) = 0.152 W/kg



0 dB = 1.17 W/kg

DT&C Co., Ltd.

DUT: DM-01K; Type: Bar

Communication System: UID 0, Bluetooth (0); Frequency: 2441 MHz; Duty Cycle: 1:1.3
Medium parameters used: $f = 2441$ MHz; $\sigma = 1.974$ S/m; $\epsilon_r = 52.512$; $\rho = 1000$ kg/m³
Phantom section: Flat Section

DASY5 Configuration:

Probe: EX3DV4 - SN3930; ConvF(7.9, 7.9, 7.9); Calibrated: 7/26/2017; Electronics: DAE4 Sn1335
Sensor-Surface: 2mm (Mechanical Surface Detection)
Phantom: SAM with CRP_2016_07_22_middle; Type: QD000P40CD; Serial: TP:1786
Measurement SW: DASY52, Version 52.8 (8); SEMCAD X Version 14.6.10 (7331)

Test Date: 2017-10-13; Ambient Temp: 21.3; Tissue Temp: 22.0

1 cm space from Body, Left, Bluetooth(BDR 1M) Ch. 39, Ant Internal

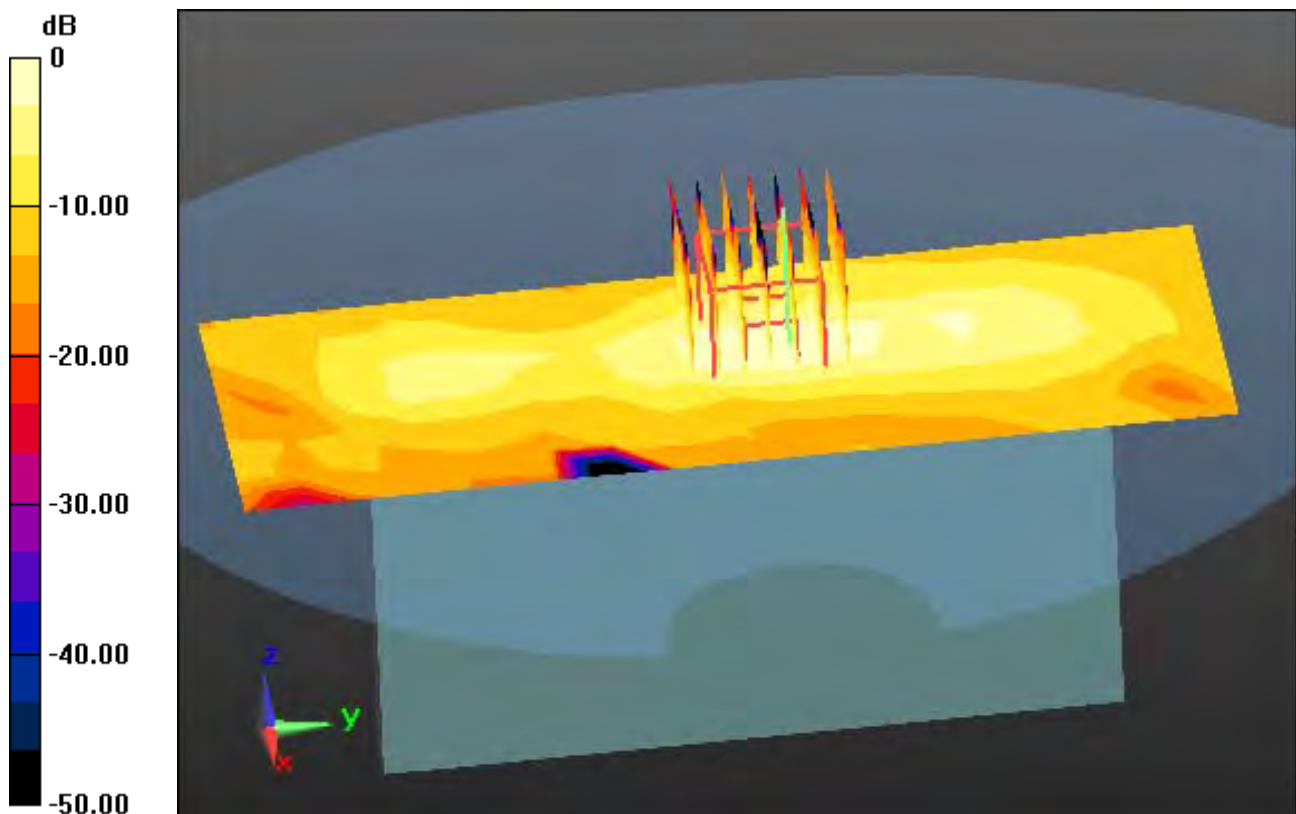
Area Scan (7x17x1): Measurement grid: dx=12mm, dy=12mm

Zoom Scan (7x7x7)/Cube 0: Measurement grid: dx=5mm, dy=5mm, dz=5mm

Power Drift = -0.14 dB

Peak SAR (extrapolated) = 0.0690 W/kg

SAR(1 g) = 0.034 W/kg; SAR(10 g) = 0.016 W/kg



0 dB = 0.0512 W/kg