

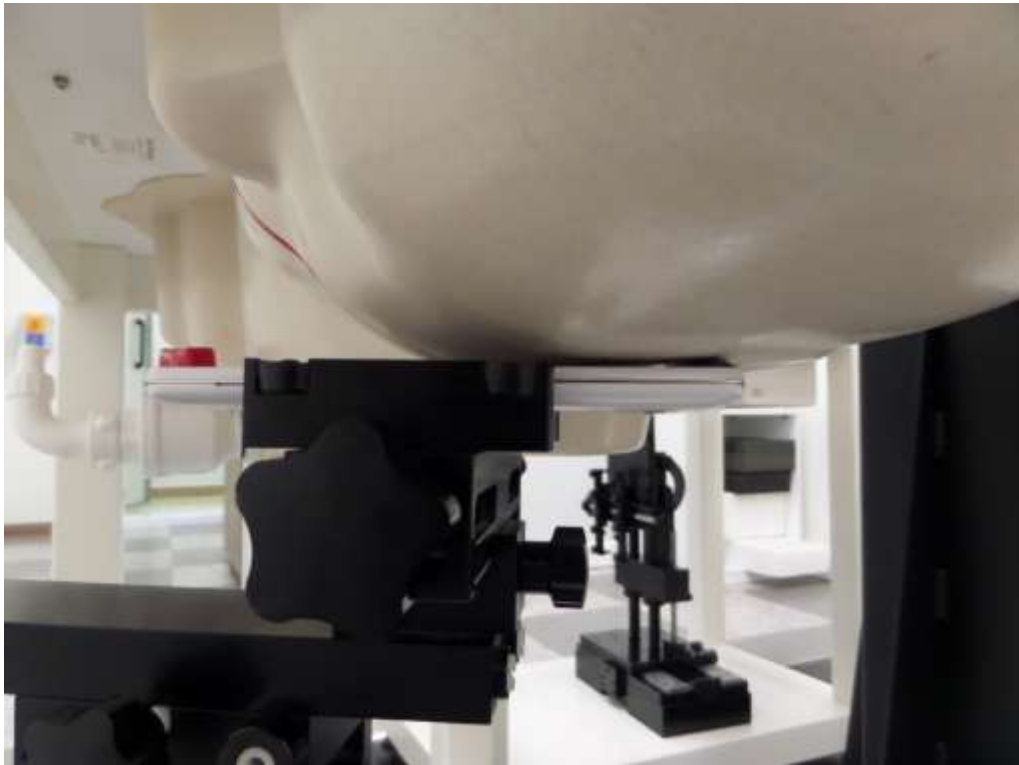
## **SAR Test Setup Photographs**

Note: All test position, except WCDMA 1900 rear position for worst spot SAR test is from the ZNFD690N test setup postion.

■ **Test Setup Photo**



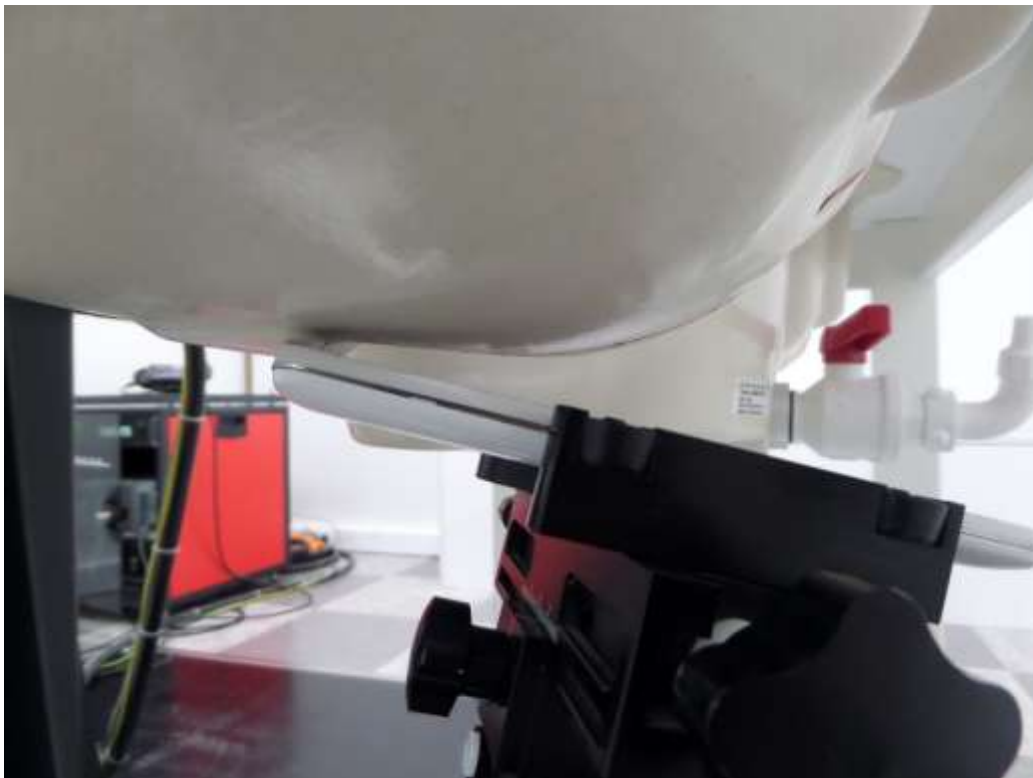
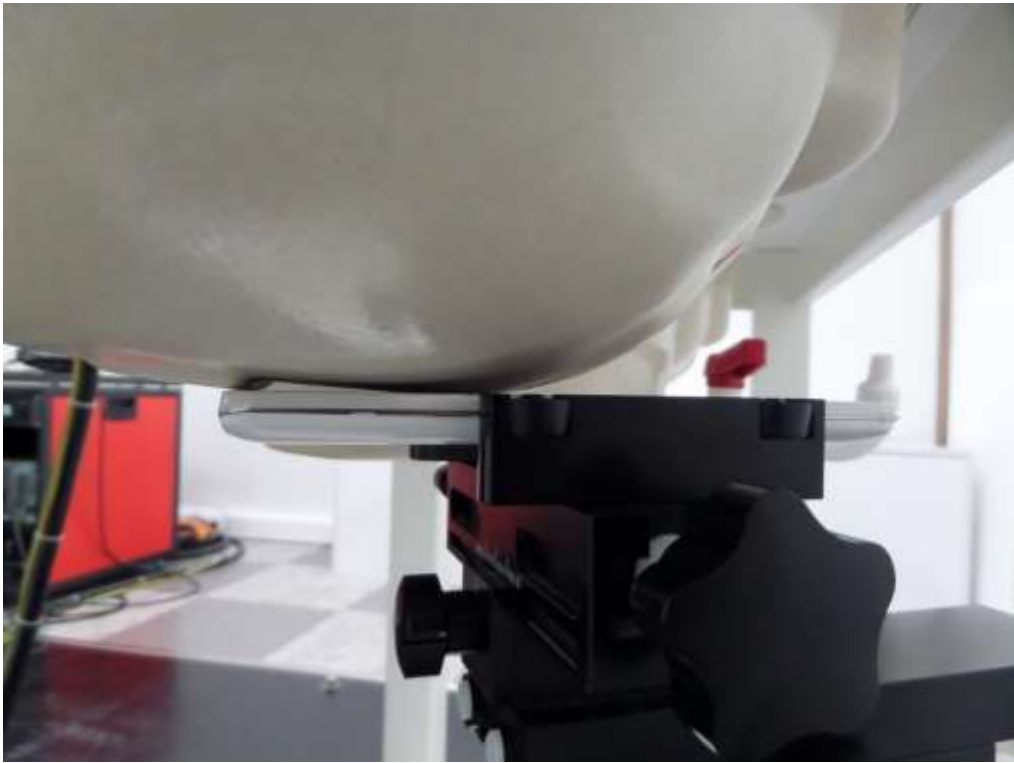
■ **Test Setup Photo**



■ **Test Setup Photo**



■ **Test Setup Photo**



■ **Test Setup Photo**

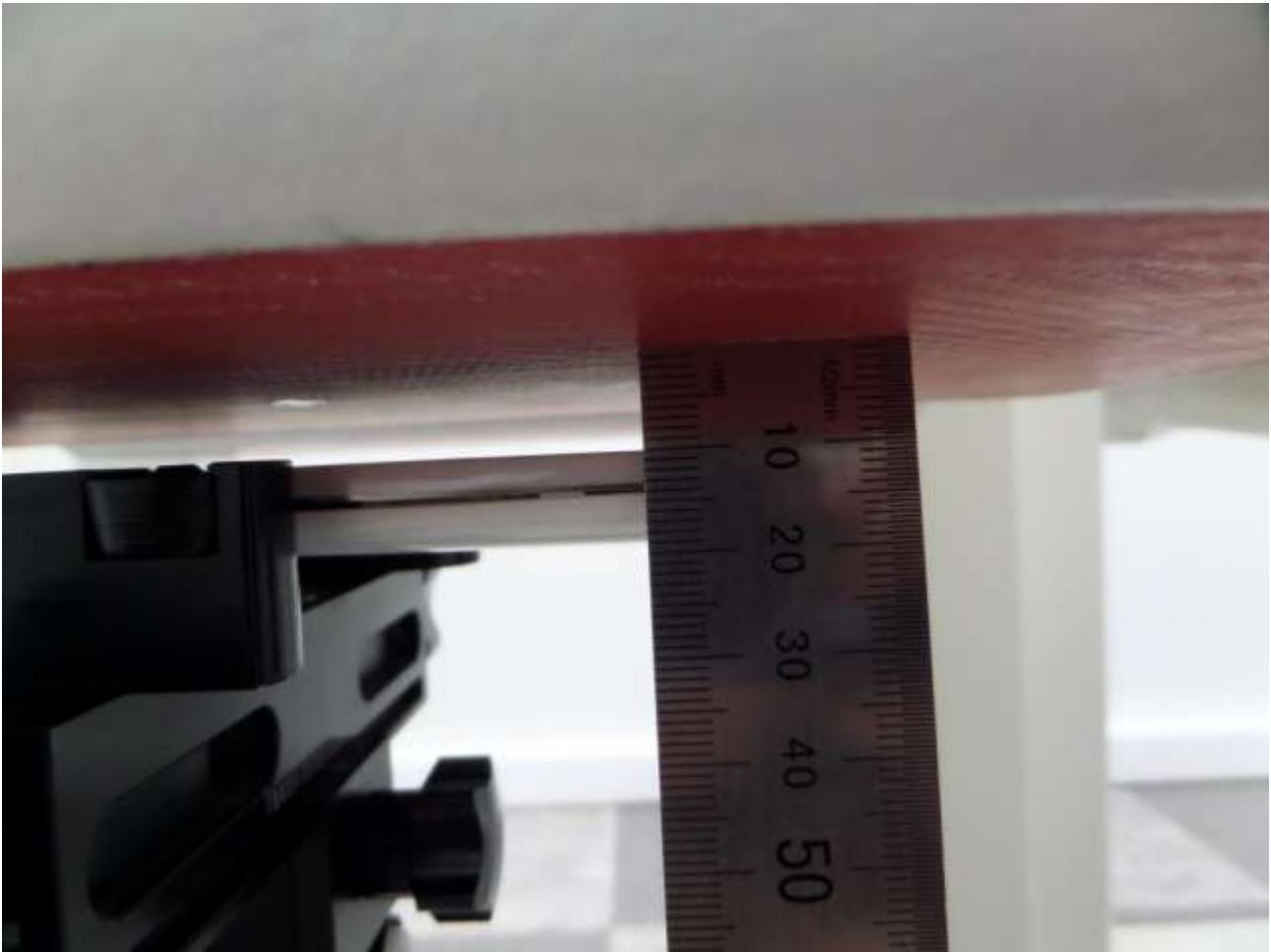


■ **Test Setup Photo (Rear)**



**[Distance of 1.0 cm from the EUT]**

■ **Test Setup Photo (Front)**



**[Distance of 1.0 cm from the EUT]**



■ **Test Setup Photo (Left)**



**[Distance of 1.0 cm from the EUT]**

■ **Test Setup Photo (Right)**



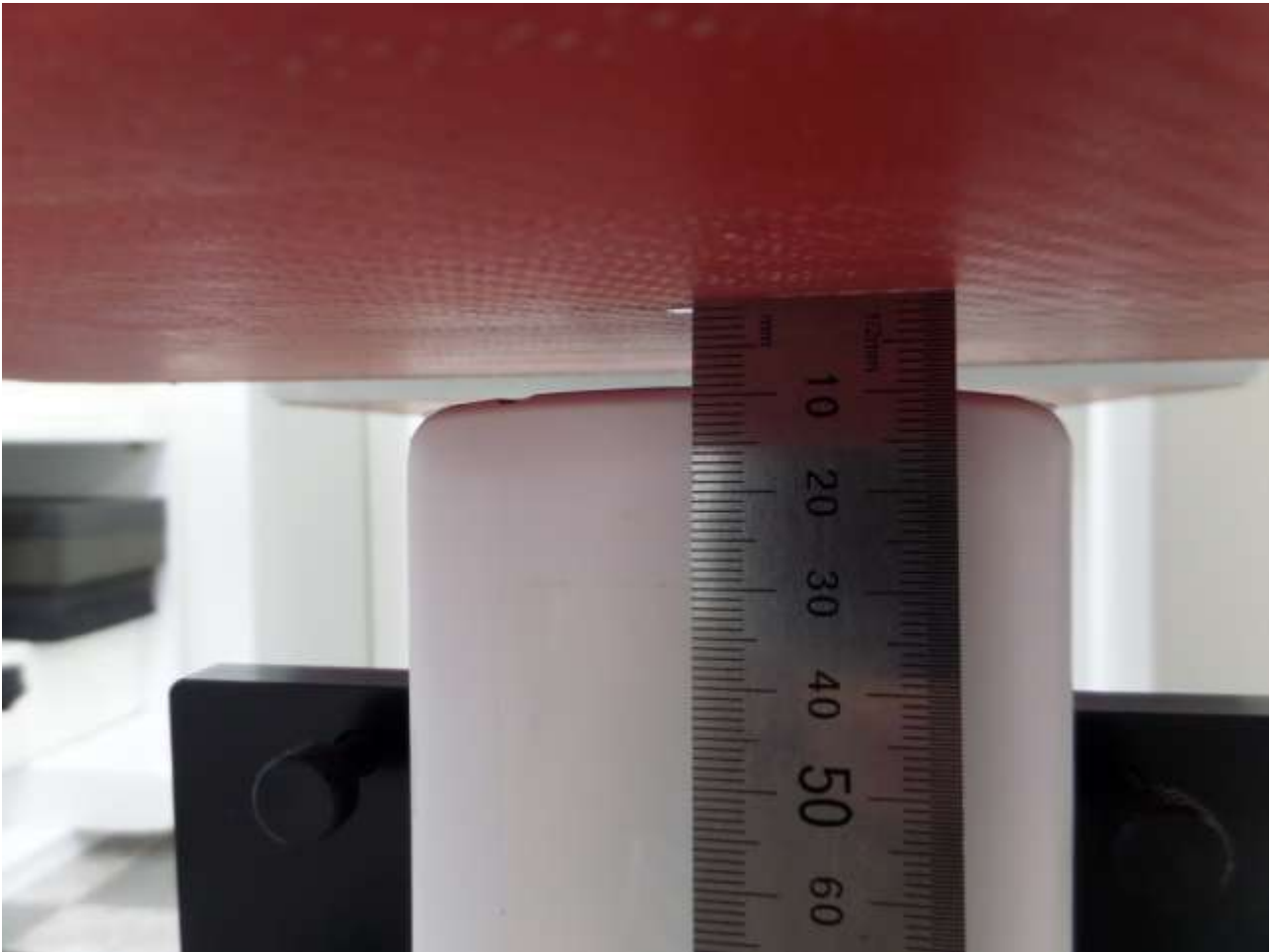
**[Distance of 1.0 cm from the EUT]**

■ **Test Setup Photo (Top)**



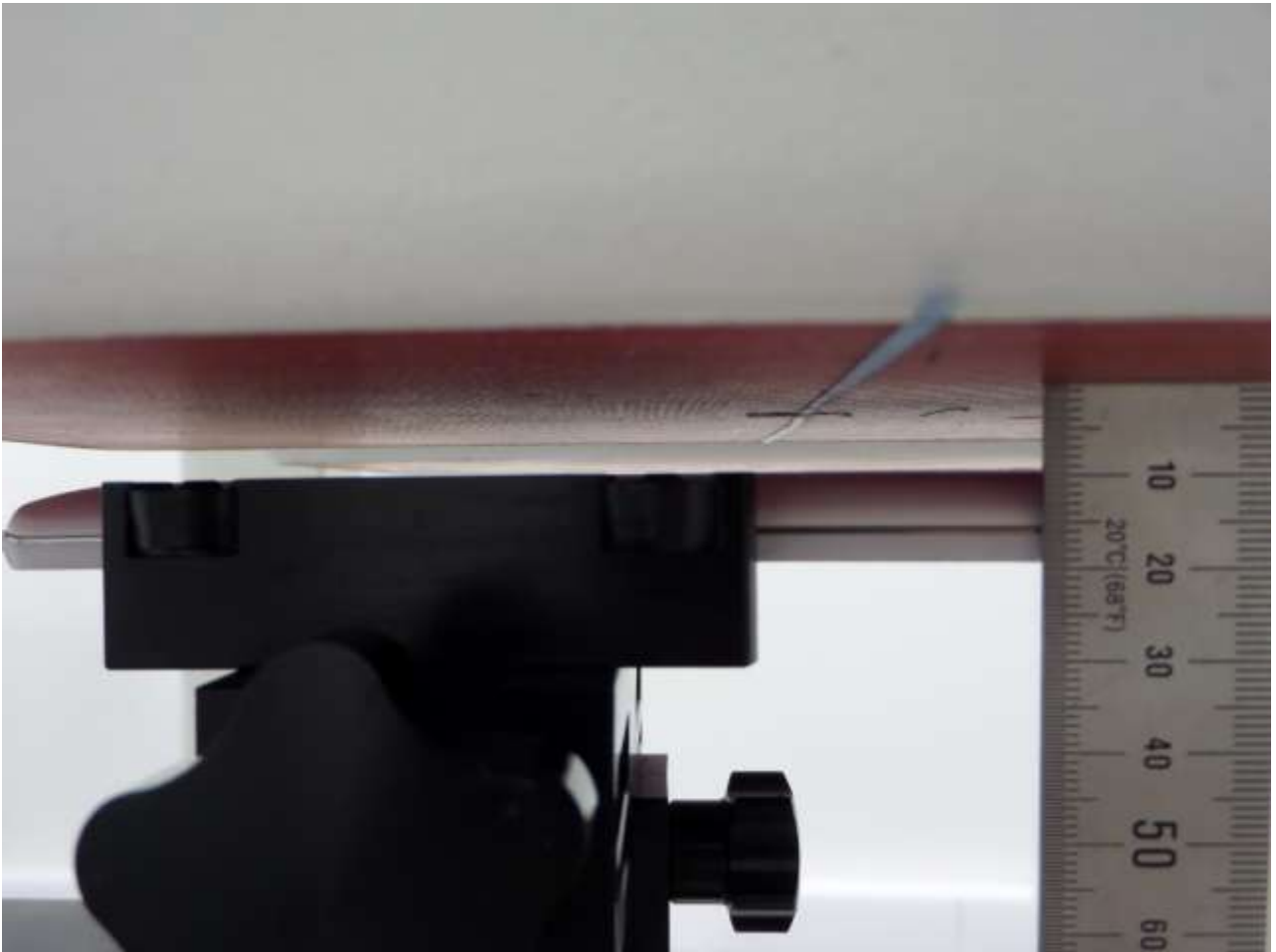
**[Distance of 1.0 cm from the EUT]**

■ **Test Setup Photo (Bottom)**



**[Distance of 1.0 cm from the EUT]**

■ **Test Setup Photo (Rear)\***



**[Distance of 1.0 cm from the EUT]**

\* All test position, except this WCDMA 1900 rear position for worst spot SAR test is from the ZNFD690N.