

Dipole Verification Plots

DIGITAL EMC CO., LTD

DUT: Dipole 835 MHz; Type: D835V2; Serial: D835V2 - SN:4d159

Communication System: CW; Frequency: 835 MHz; Duty Cycle: 1:1
Medium parameters used: $f = 835 \text{ MHz}$; $\sigma = 0.921 \text{ S/m}$; $\epsilon_r = 40.813$; $\rho = 1000 \text{ kg/m}^3$
Phantom section: Flat Section

DASY5 Configuration:

Probe: EX3DV4 - SN3933; ConvF(10.06, 10.06, 10.06); Calibrated: 9/24/2013; ; Electronics: DAE4 Sn1396
Phantom: SAM with CRP_2013_10_08_middle; Type: QD000P40CD; Serial: TP:1786
Measurement SW: DASY52, Version 52.8 (7); SEMCAD X Version 14.6.10 (7164)

Test Date: 2014-01-28; Ambient Temp: 20.9; Tissue Temp: 21.4

835 MHz System Verification

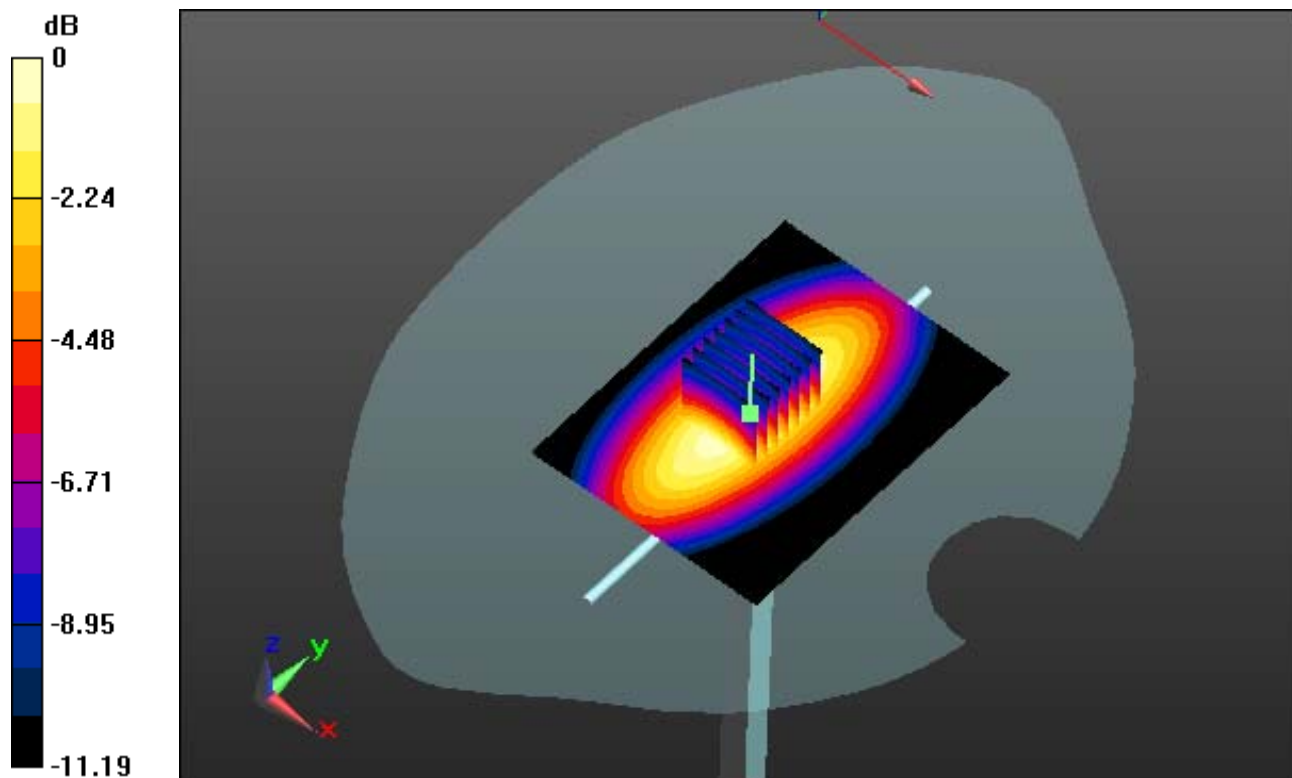
Area Scan (61x81x1): Interpolated grid: $dx=15\text{mm}$, $dy=15\text{mm}$

Zoom Scan (7x7x7)/Cube 0: Measurement grid: $dx=5\text{mm}$, $dy=5\text{mm}$, $dz=5\text{mm}$

Power Drift = 0.01 dB

Peak SAR (extrapolated) = 3.82 W/kg

SAR(1 g) = 2.49 W/kg; SAR(10 g) = 1.6 W/kg



0 dB = 3.05 W/kg

DIGITAL EMC CO., LTD

DUT: Dipole 835 MHz; Type: D835V2; Serial: D835V2 - SN:4d159

Communication System: CW; Frequency: 835 MHz; Duty Cycle: 1:1
Medium parameters used: $f = 835$ MHz; $\sigma = 0.921$ S/m; $\epsilon_r = 40.813$; $\rho = 1000$ kg/m³
Phantom section: Flat Section

DASY5 Configuration:

Probe: EX3DV4 - SN3933; ConvF(10.06, 10.06, 10.06); Calibrated: 9/24/2013; ; Electronics: DAE4 Sn1396
Phantom: SAM with CRP_2013_10_08_middle; Type: QD000P40CD; Serial: TP:1786
Measurement SW: DASY52, Version 52.8 (7); SEMCAD X Version 14.6.10 (7164)

Test Date: 2014-01-28; Ambient Temp: 20.9; Tissue Temp: 21.4

835 MHz System Verification

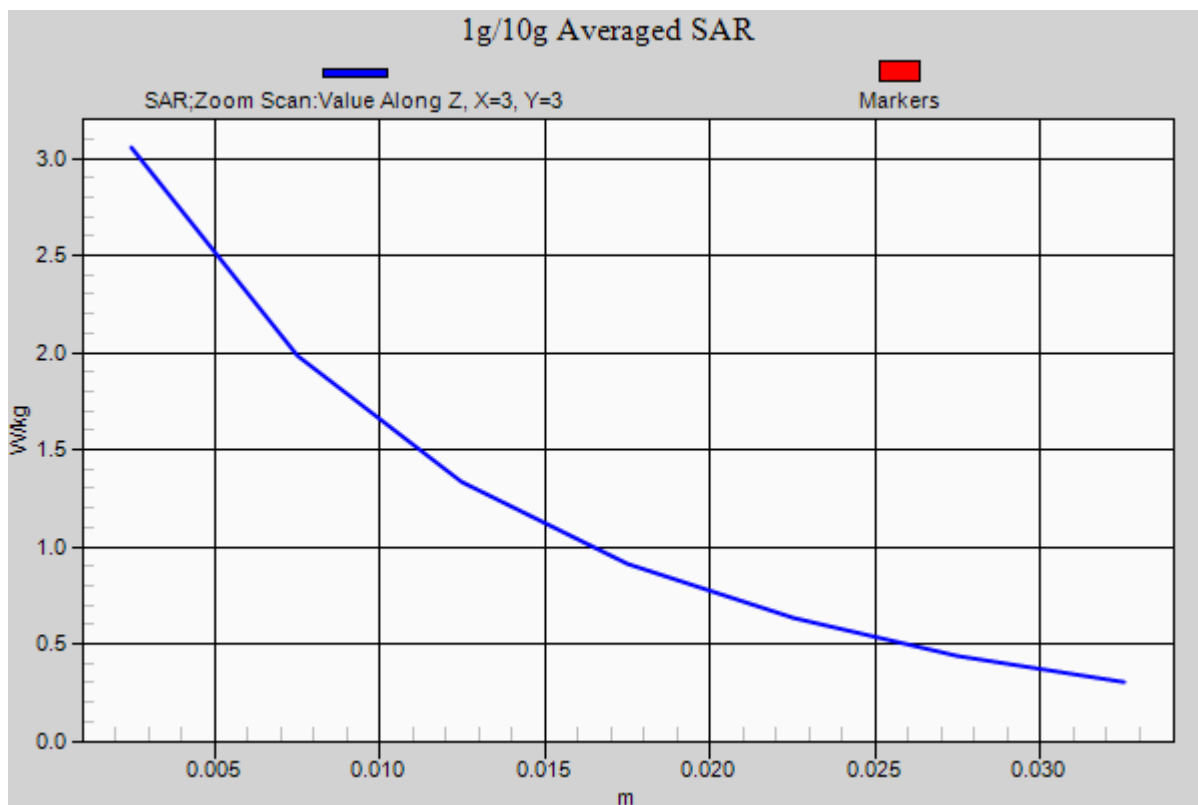
Area Scan (61x81x1): Interpolated grid: dx=15mm, dy=15mm

Zoom Scan (7x7x7)/Cube 0: Measurement grid: dx=5mm, dy=5mm, dz=5mm

Power Drift = 0.01 dB

Peak SAR (extrapolated) = 3.82 W/kg

SAR(1 g) = 2.49 W/kg; SAR(10 g) = 1.6 W/kg



DIGITAL EMC CO., LTD

DUT: Dipole 835 MHz; Type: D835V2; Serial: D835V2 - SN:4d159

Communication System: CW; Frequency: 835 MHz; Duty Cycle: 1:1
Medium parameters used: $f = 835$ MHz; $\sigma = 0.945$ S/m; $\epsilon_r = 53.413$; $\rho = 1000$ kg/m³
Phantom section: Flat Section

DASY5 Configuration:

Probe: EX3DV4 - SN3933; ConvF(9.79, 9.79, 9.79); Calibrated: 9/24/2013; ; Electronics: DAE4 Sn1396
Phantom: SAM with CRP_2013_10_08_middle; Type: QD000P40CD; Serial: TP:1786
Measurement SW: DASY52, Version 52.8 (7); SEMCAD X Version 14.6.10 (7164)

Test Date: 2014-01-29; Ambient Temp: 20.7; Tissue Temp: 21.3

835 MHz System Verification

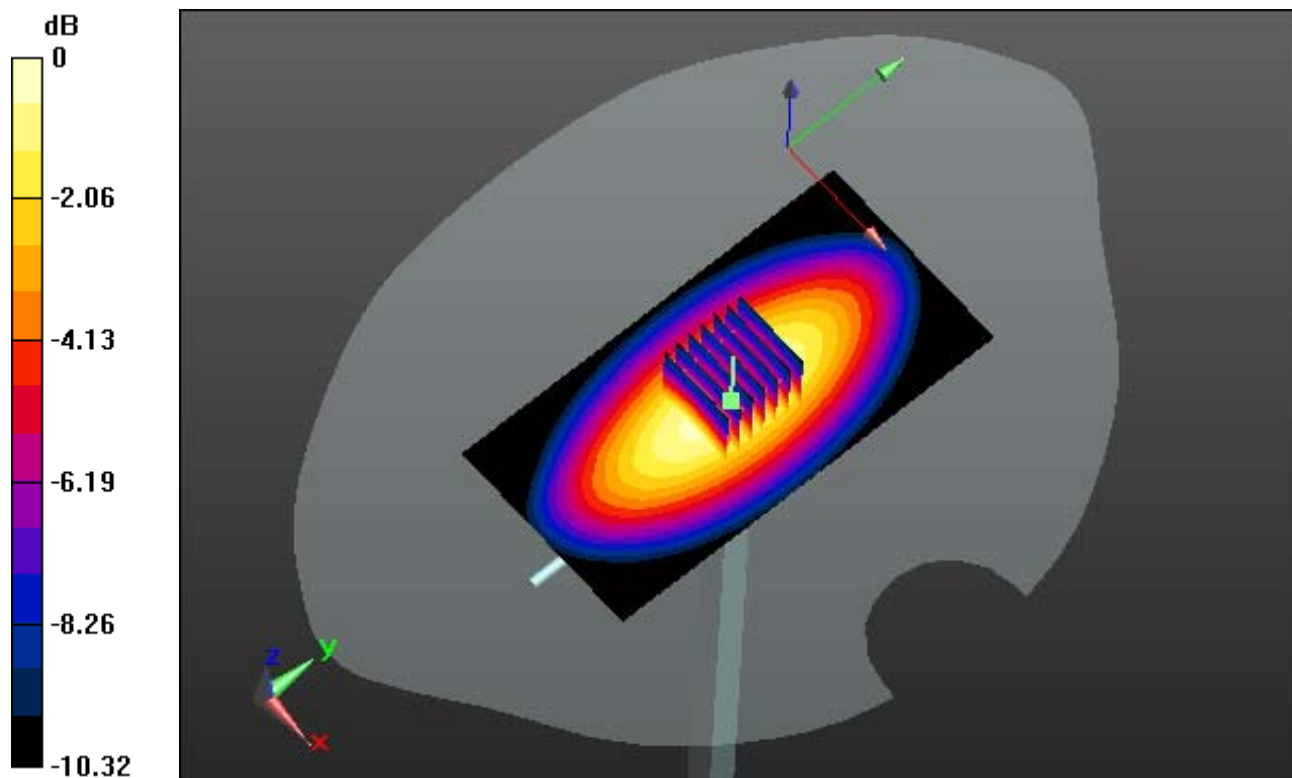
Area Scan (51x101x1): Interpolated grid: dx=15mm, dy=15mm

Zoom Scan (7x7x7)/Cube 0: Measurement grid: dx=5mm, dy=5mm, dz=5mm

Power Drift = 0.02 dB

Peak SAR (extrapolated) = 3.35 W/kg

SAR(1 g) = 2.2 W/kg; SAR(10 g) = 1.44 W/kg



0 dB = 2.38 W/kg

DIGITAL EMC CO., LTD

DUT: Dipole 835 MHz; Type: D835V2; Serial: D835V2 - SN:4d159

Communication System: CW; Frequency: 835 MHz; Duty Cycle: 1:1
Medium parameters used: $f = 835$ MHz; $\sigma = 0.945$ S/m; $\epsilon_r = 53.413$; $\rho = 1000$ kg/m³
Phantom section: Flat Section

DASY5 Configuration:

Probe: EX3DV4 - SN3933; ConvF(9.79, 9.79, 9.79); Calibrated: 9/24/2013; ; Electronics: DAE4 Sn1396
Phantom: SAM with CRP_2013_10_08_middle; Type: QD000P40CD; Serial: TP:1786
Measurement SW: DASY52, Version 52.8 (7); SEMCAD X Version 14.6.10 (7164)

Test Date: 2014-01-29; Ambient Temp: 20.7; Tissue Temp: 21.3

835 MHz System Verification

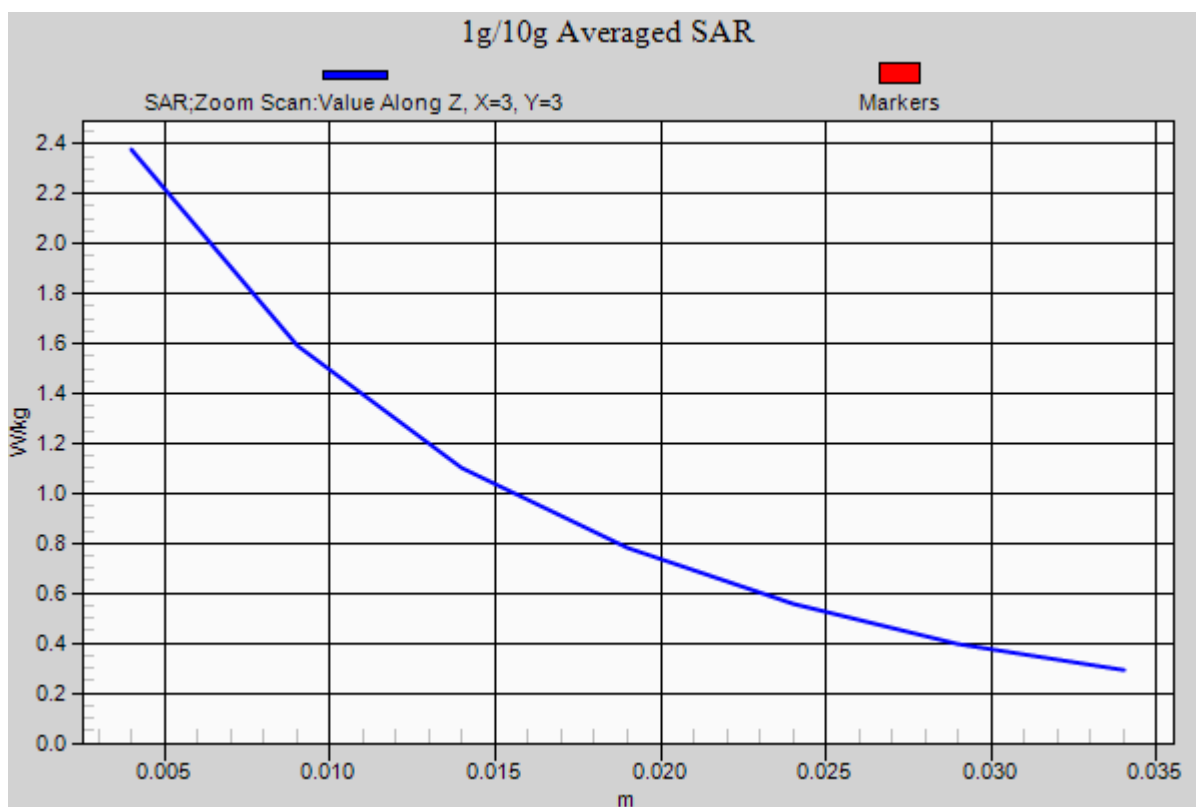
Area Scan (51x101x1): Interpolated grid: dx=15mm, dy=15mm

Zoom Scan (7x7x7)/Cube 0: Measurement grid: dx=5mm, dy=5mm, dz=5mm

Power Drift = 0.02 dB

Peak SAR (extrapolated) = 3.35 W/kg

SAR(1 g) = 2.2 W/kg; SAR(10 g) = 1.44 W/kg



DIGITAL EMC CO., LTD

DUT: Dipole 835 MHz; Type: D835V2; Serial: D835V2 - SN:4d159

Communication System: CW; Frequency: 835 MHz; Duty Cycle: 1:1
Medium parameters used: $f = 835 \text{ MHz}$; $\sigma = 0.925 \text{ S/m}$; $\epsilon_r = 40.892$; $\rho = 1000 \text{ kg/m}^3$
Phantom section: Flat Section

DASY5 Configuration:

Probe: EX3DV4 - SN3933; ConvF(10.06, 10.06, 10.06); Calibrated: 9/24/2013; ; Electronics: DAE4 Sn1396
Phantom: SAM with CRP_2013_10_08_middle; Type: QD000P40CD; Serial: TP:1786
Measurement SW: DASY52, Version 52.8 (7); SEMCAD X Version 14.6.10 (7164)

Test Date: 2014-02-05; Ambient Temp: 20.9; Tissue Temp: 21.4

835 MHz System Verification

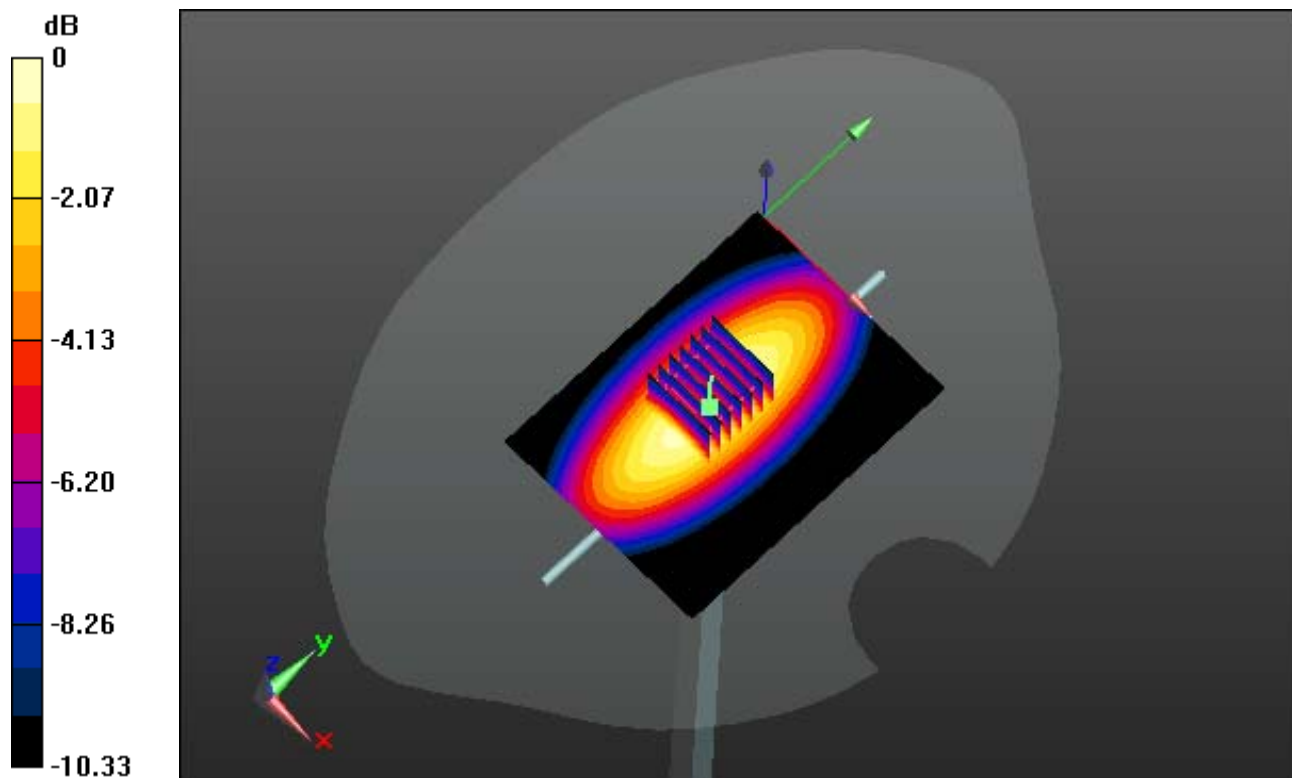
Area Scan (61x81x1): Interpolated grid: $dx=15\text{mm}$, $dy=15\text{mm}$

Zoom Scan (7x7x7)/Cube 0: Measurement grid: $dx=5\text{mm}$, $dy=5\text{mm}$, $dz=5\text{mm}$

Power Drift = -0.03 dB

Peak SAR (extrapolated) = 3.32 W/kg

SAR(1 g) = 2.27 W/kg; SAR(10 g) = 1.48 W/kg



0 dB = 2.66 W/kg

DIGITAL EMC CO., LTD

DUT: Dipole 835 MHz; Type: D835V2; Serial: D835V2 - SN:4d159

Communication System: CW; Frequency: 835 MHz; Duty Cycle: 1:1
Medium parameters used: $f = 835$ MHz; $\sigma = 0.925$ S/m; $\epsilon_r = 40.892$; $\rho = 1000$ kg/m³
Phantom section: Flat Section

DASY5 Configuration:

Probe: EX3DV4 - SN3933; ConvF(10.06, 10.06, 10.06); Calibrated: 9/24/2013; ; Electronics: DAE4 Sn1396
Phantom: SAM with CRP_2013_10_08_middle; Type: QD000P40CD; Serial: TP:1786
Measurement SW: DASY52, Version 52.8 (7); SEMCAD X Version 14.6.10 (7164)

Test Date: 2014-02-05; Ambient Temp: 20.9; Tissue Temp: 21.4

835 MHz System Verification

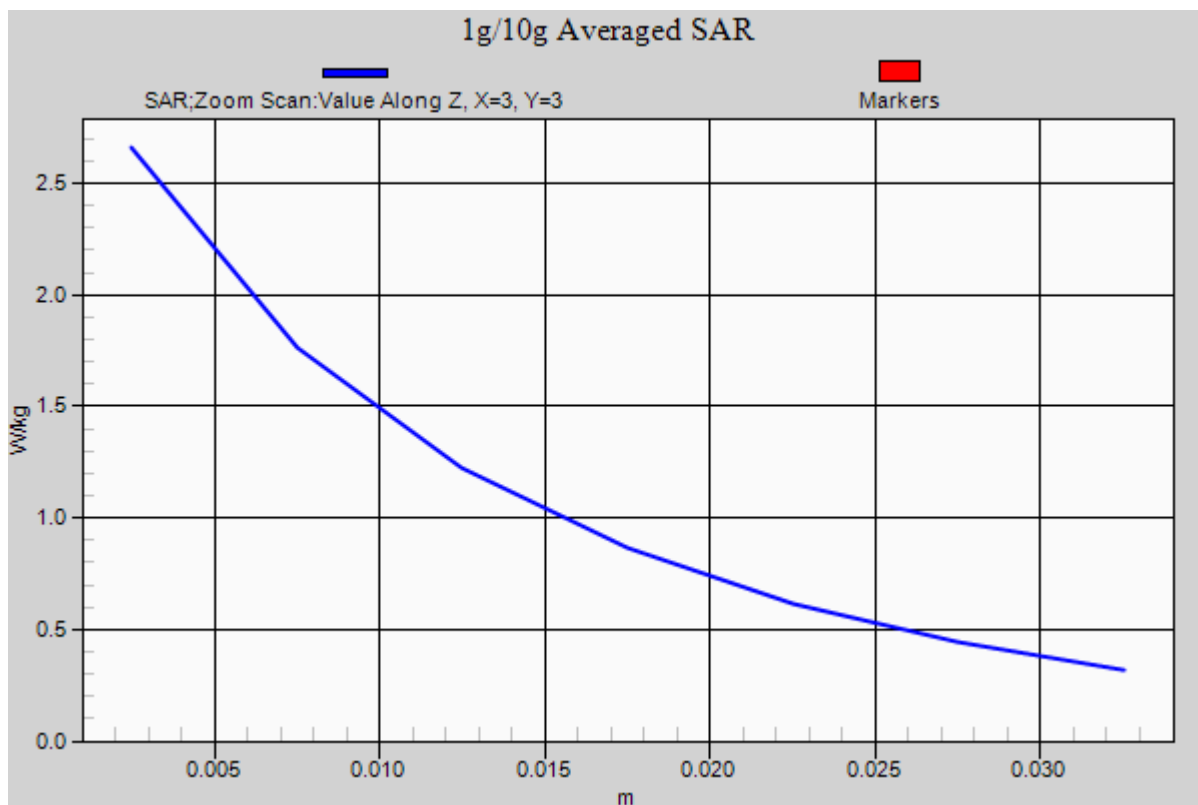
Area Scan (61x81x1): Interpolated grid: dx=15mm, dy=15mm

Zoom Scan (7x7x7)/Cube 0: Measurement grid: dx=5mm, dy=5mm, dz=5mm

Power Drift = -0.03 dB

Peak SAR (extrapolated) = 3.32 W/kg

SAR(1 g) = 2.27 W/kg; SAR(10 g) = 1.48 W/kg



DIGITAL EMC CO., LTD

DUT: Dipole 835 MHz; Type: D835V2; Serial: D835V2 - SN:4d159

Communication System: CW; Frequency: 835 MHz; Duty Cycle: 1:1
Medium parameters used: $f = 835 \text{ MHz}$; $\sigma = 0.952 \text{ S/m}$; $\epsilon_r = 53.836$; $\rho = 1000 \text{ kg/m}^3$
Phantom section: Flat Section

DASY5 Configuration:

Probe: EX3DV4 - SN3933; ConvF(9.79, 9.79, 9.79); Calibrated: 9/24/2013; ; Electronics: DAE4 Sn1396
Phantom: SAM with CRP_2013_10_08_middle; Type: QD000P40CD; Serial: TP:1786
Measurement SW: DASY52, Version 52.8 (7); SEMCAD X Version 14.6.10 (7164)

Test Date: 2014-02-05; Ambient Temp: 20.9; Tissue Temp: 21.4

835 MHz System Verification

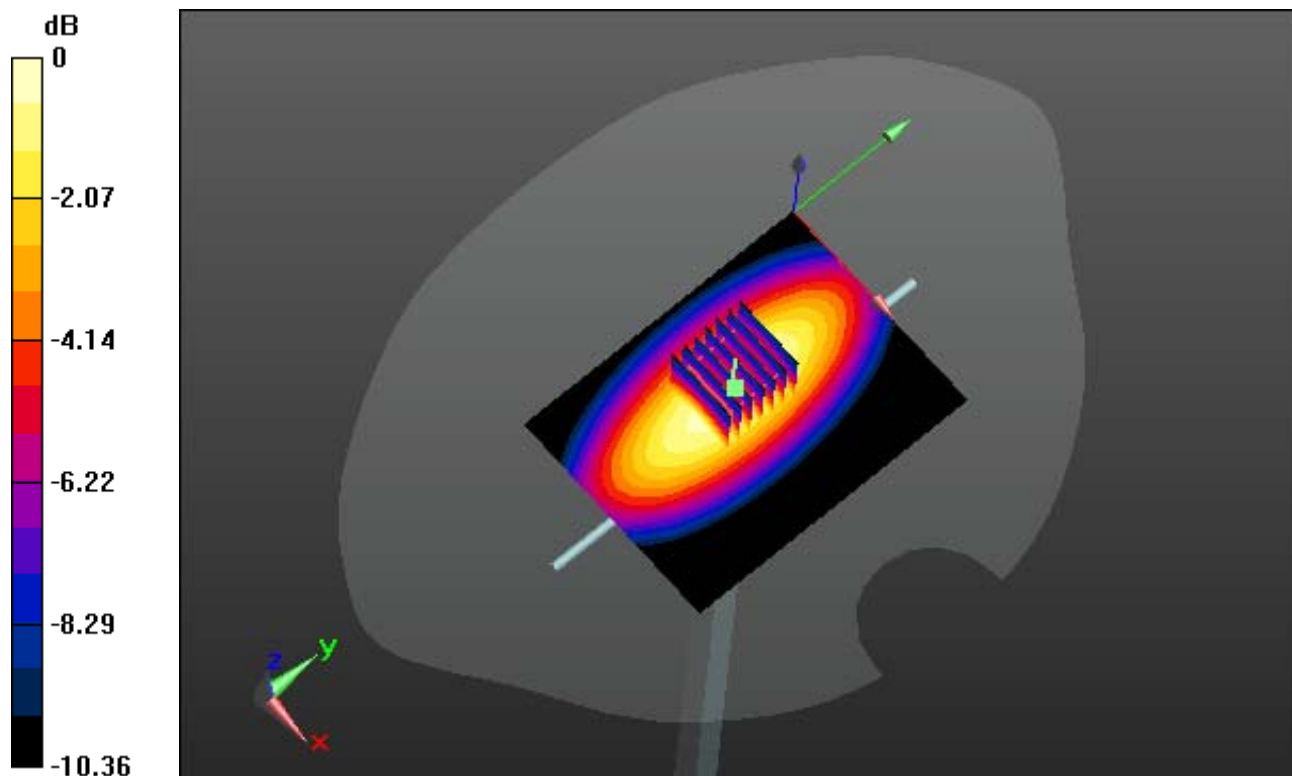
Area Scan (61x81x1): Interpolated grid: $dx=15\text{mm}$, $dy=15\text{mm}$

Zoom Scan (7x7x7)/Cube 0: Measurement grid: $dx=5\text{mm}$, $dy=5\text{mm}$, $dz=5\text{mm}$

Power Drift = 0.01 dB

Peak SAR (extrapolated) = 3.16 W/kg

SAR(1 g) = 2.18 W/kg; SAR(10 g) = 1.44 W/kg



0 dB = 2.54 W/kg

DIGITAL EMC CO., LTD

DUT: Dipole 835 MHz; Type: D835V2; Serial: D835V2 - SN:4d159

Communication System: CW; Frequency: 835 MHz; Duty Cycle: 1:1
Medium parameters used: $f = 835$ MHz; $\sigma = 0.952$ S/m; $\epsilon_r = 53.836$; $\rho = 1000$ kg/m³
Phantom section: Flat Section

DASY5 Configuration:

Probe: EX3DV4 - SN3933; ConvF(9.79, 9.79, 9.79); Calibrated: 9/24/2013; ; Electronics: DAE4 Sn1396
Phantom: SAM with CRP_2013_10_08_middle; Type: QD000P40CD; Serial: TP:1786
Measurement SW: DASY52, Version 52.8 (7); SEMCAD X Version 14.6.10 (7164)

Test Date: 2014-02-05; Ambient Temp: 20.9; Tissue Temp: 21.4

835 MHz System Verification

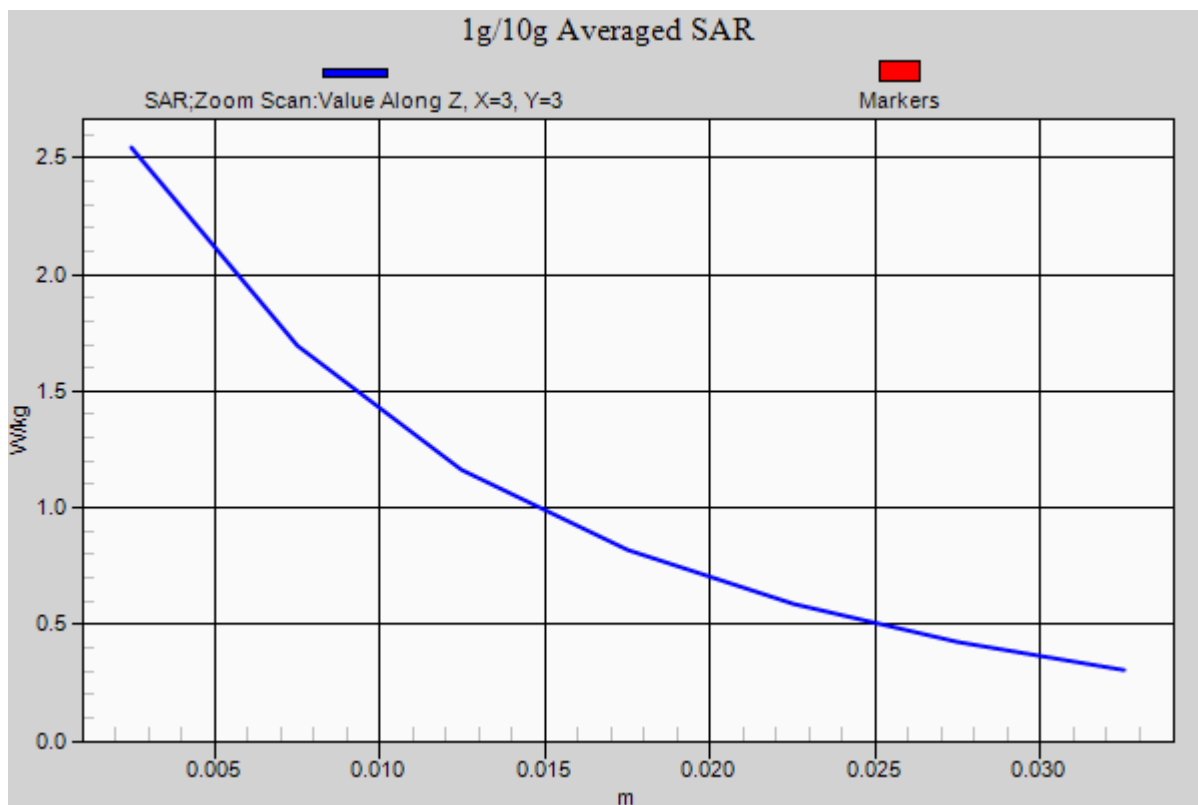
Area Scan (61x81x1): Interpolated grid: dx=15mm, dy=15mm

Zoom Scan (7x7x7)/Cube 0: Measurement grid: dx=5mm, dy=5mm, dz=5mm

Power Drift = 0.01 dB

Peak SAR (extrapolated) = 3.16 W/kg

SAR(1 g) = 2.18 W/kg; SAR(10 g) = 1.44 W/kg



DIGITAL EMC CO., LTD

DUT: Dipole 1900 MHz; Type: D1900V2; Serial: D1900V2 - SN:5d176

Communication System: CW; Frequency: 1900 MHz; Duty Cycle: 1:1
Medium parameters used: $f = 1900$ MHz; $\sigma = 1.404$ S/m; $\epsilon_r = 40.608$; $\rho = 1000$ kg/m³
Phantom section: Flat Section

DASY5 Configuration:

Probe: EX3DV4 - SN3933; ConvF(8.25, 8.25, 8.25); Calibrated: 9/24/2013; ; Electronics: DAE4 Sn1396
Phantom: SAM with CRP_2013_10_08_middle; Type: QD000P40CD; Serial: TP:1786
Measurement SW: DASY52, Version 52.8 (7); SEMCAD X Version 14.6.10 (7164)

Test Date: 2014-02-03; Ambient Temp: 20.7; Tissue Temp: 21.1

1900 MHz System Verification

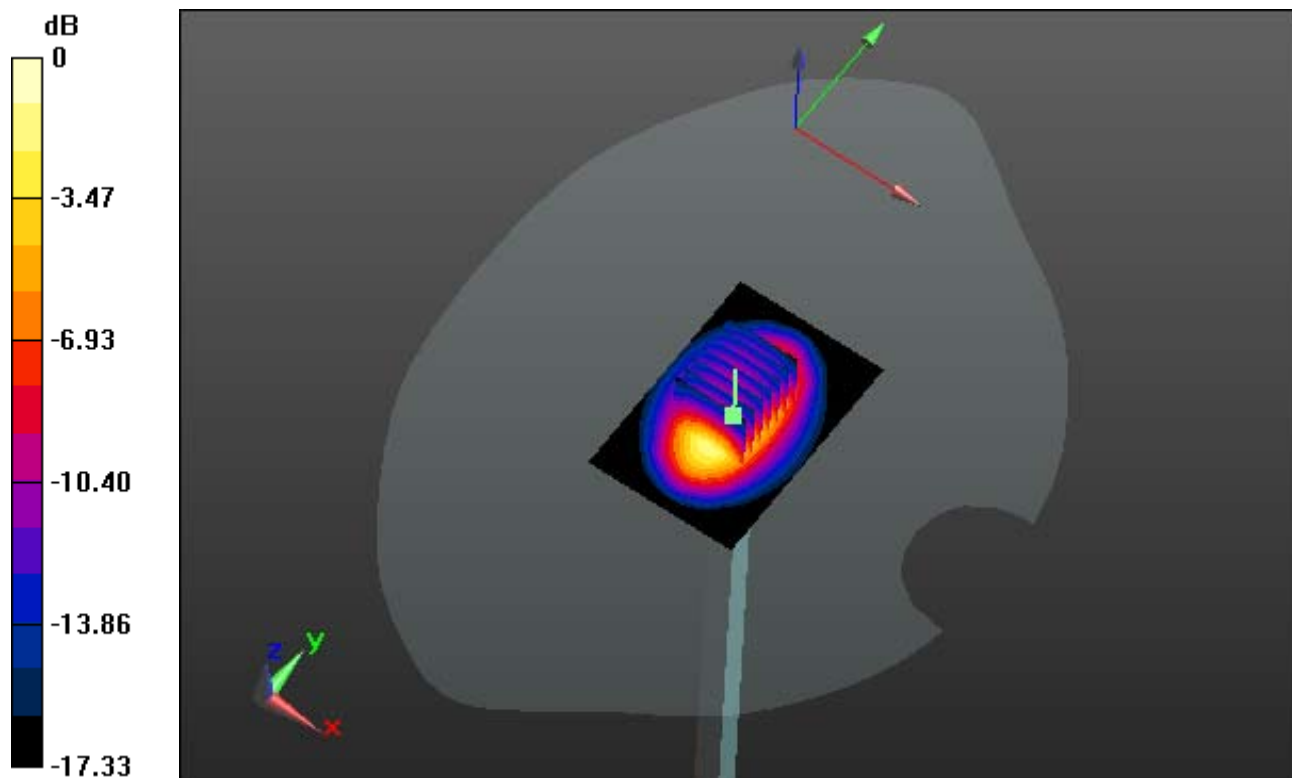
Area Scan (61x91x1): Interpolated grid: dx=15mm, dy=15mm

Zoom Scan (7x7x7)/Cube 0: Measurement grid: dx=5mm, dy=5mm, dz=5mm

Power Drift = 0.04 dB

Peak SAR (extrapolated) = 17.2 W/kg

SAR(1 g) = 9.8 W/kg; SAR(10 g) = 5.1 W/kg



0 dB = 12.6 W/kg

DIGITAL EMC CO., LTD

DUT: Dipole 1900 MHz; Type: D1900V2; Serial: D1900V2 - SN:5d176

Communication System: CW; Frequency: 1900 MHz; Duty Cycle: 1:1
Medium parameters used: $f = 1900$ MHz; $\sigma = 1.404$ S/m; $\epsilon_r = 40.608$; $\rho = 1000$ kg/m³
Phantom section: Flat Section

DASY5 Configuration:

Probe: EX3DV4 - SN3933; ConvF(8.25, 8.25, 8.25); Calibrated: 9/24/2013; ; Electronics: DAE4 Sn1396
Phantom: SAM with CRP_2013_10_08_middle; Type: QD000P40CD; Serial: TP:1786
Measurement SW: DASY52, Version 52.8 (7); SEMCAD X Version 14.6.10 (7164)

Test Date: 2014-02-03; Ambient Temp: 20.7; Tissue Temp: 21.1

1900 MHz System Verification

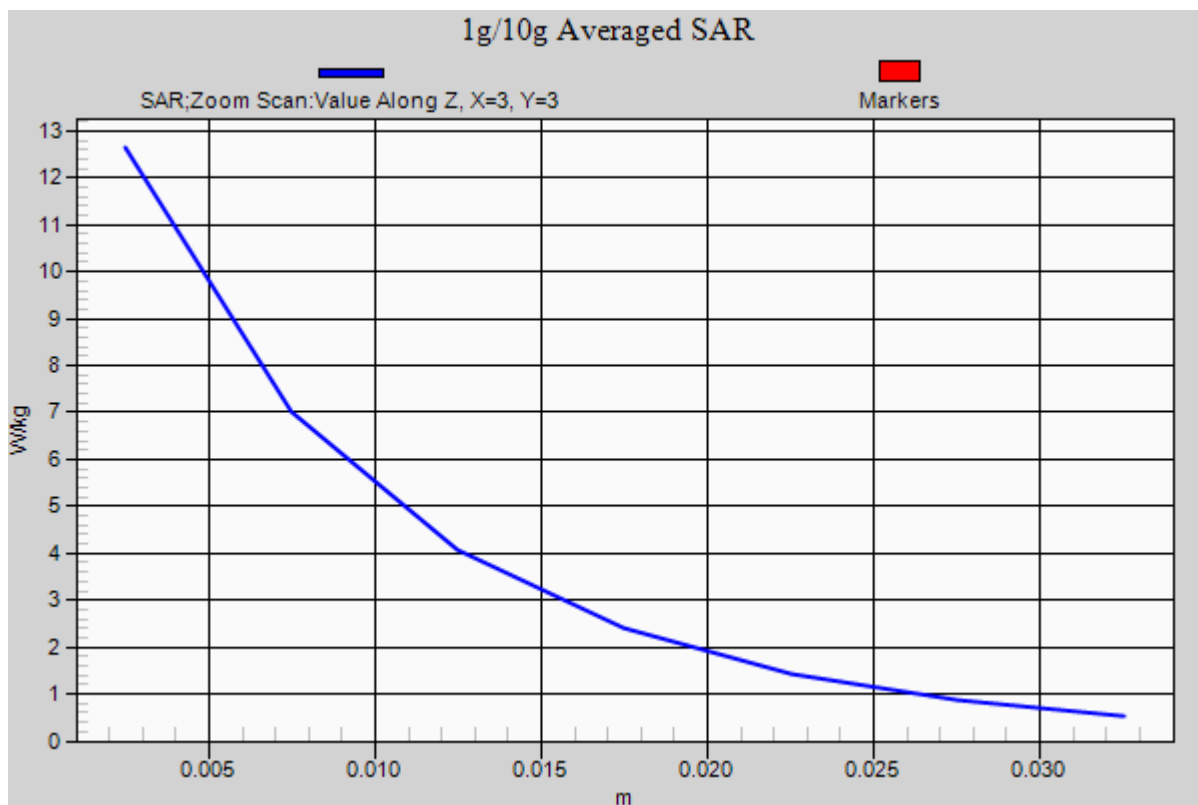
Area Scan (61x91x1): Interpolated grid: dx=15mm, dy=15mm

Zoom Scan (7x7x7)/Cube 0: Measurement grid: dx=5mm, dy=5mm, dz=5mm

Power Drift = 0.04 dB

Peak SAR (extrapolated) = 17.2 W/kg

SAR(1 g) = 9.8 W/kg; SAR(10 g) = 5.1 W/kg



DIGITAL EMC CO., LTD

DUT: Dipole 1900 MHz; Type: D1900V2; Serial: D1900V2 - SN:5d176

Communication System: CW; Frequency: 1900 MHz; Duty Cycle: 1:1
Medium parameters used: $f = 1900$ MHz; $\sigma = 1.514$ S/m; $\epsilon_r = 52.647$; $\rho = 1000$ kg/m³
Phantom section: Flat Section

DASY5 Configuration:

Probe: EX3DV4 - SN3933; ConvF(7.79, 7.79, 7.79); Calibrated: 9/24/2013; ; Electronics: DAE4 Sn1396
Phantom: SAM with CRP_2013_10_08_middle; Type: QD000P40CD; Serial: TP:1786
Measurement SW: DASY52, Version 52.8 (7); SEMCAD X Version 14.6.10 (7164)

Test Date: 2014-02-04; Ambient Temp: 21.0; Tissue Temp: 21.5

1900 MHz System Verification

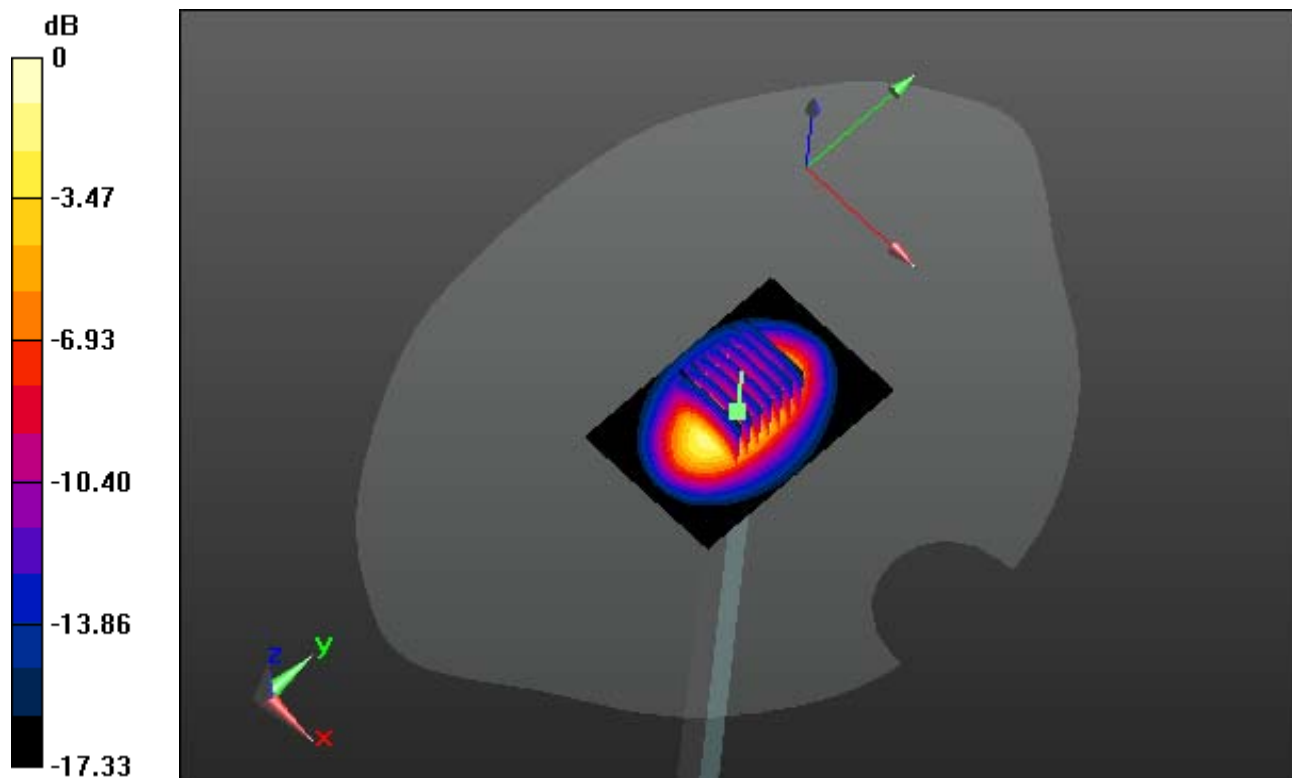
Area Scan (61x91x1): Interpolated grid: dx=15mm, dy=15mm

Zoom Scan (7x7x7)/Cube 0: Measurement grid: dx=5mm, dy=5mm, dz=5mm

Power Drift = 0.05 dB

Peak SAR (extrapolated) = 19.1 W/kg

SAR(1 g) = 10.1 W/kg; SAR(10 g) = 5.42 W/kg



0 dB = 13.9 W/kg

DIGITAL EMC CO., LTD

DUT: Dipole 1900 MHz; Type: D1900V2; Serial: D1900V2 - SN:5d176

Communication System: CW; Frequency: 1900 MHz; Duty Cycle: 1:1
Medium parameters used: $f = 1900$ MHz; $\sigma = 1.514$ S/m; $\epsilon_r = 52.647$; $\rho = 1000$ kg/m³
Phantom section: Flat Section

DASY5 Configuration:

Probe: EX3DV4 - SN3933; ConvF(7.79, 7.79, 7.79); Calibrated: 9/24/2013; ; Electronics: DAE4 Sn1396
Phantom: SAM with CRP_2013_10_08_middle; Type: QD000P40CD; Serial: TP:1786
Measurement SW: DASY52, Version 52.8 (7); SEMCAD X Version 14.6.10 (7164)

Test Date: 2014-02-04; Ambient Temp: 21.0; Tissue Temp: 21.5

1900 MHz System Verification

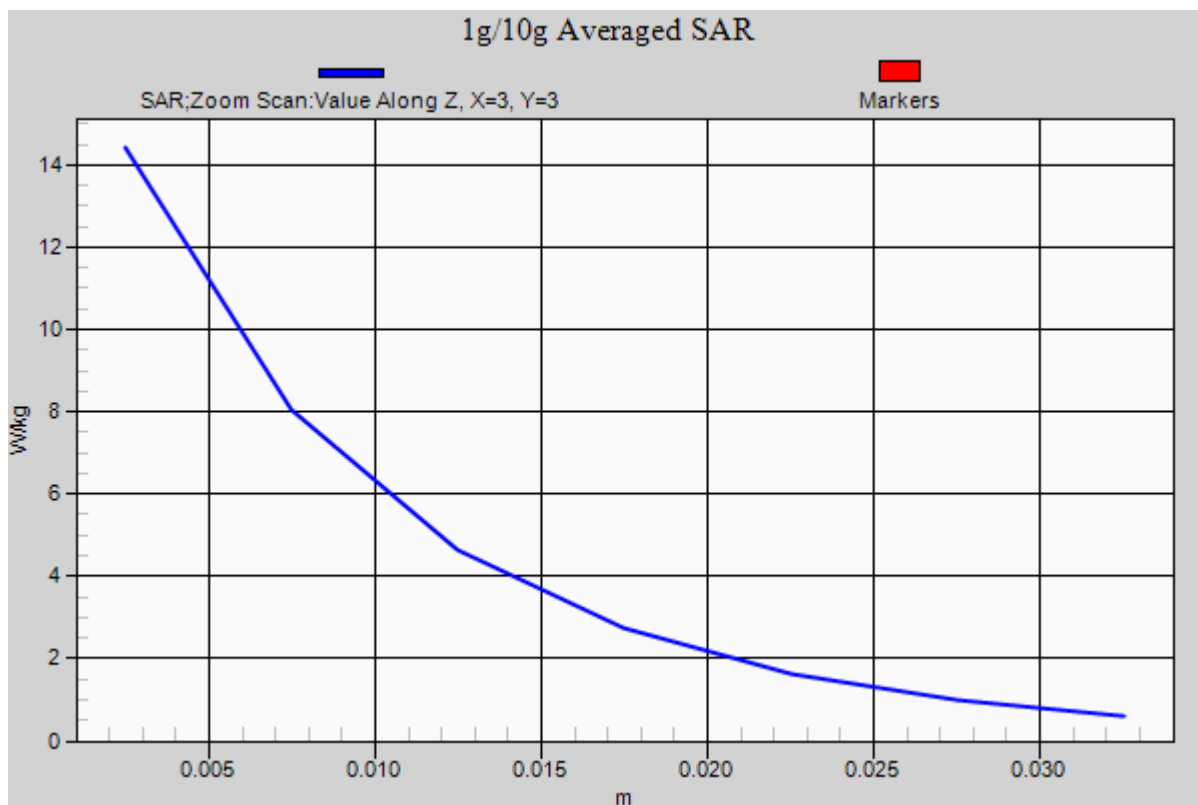
Area Scan (61x91x1): Interpolated grid: dx=15mm, dy=15mm

Zoom Scan (7x7x7)/Cube 0: Measurement grid: dx=5mm, dy=5mm, dz=5mm

Power Drift = 0.05 dB

Peak SAR (extrapolated) = 19.1 W/kg

SAR(1 g) = 10.1 W/kg; SAR(10 g) = 5.42 W/kg



DIGITAL EMC CO., LTD

DUT: Dipole 1900 MHz; Type: D1900V2; Serial: D1900V2 - SN:5d176

Communication System: CW; Frequency: 1900 MHz; Duty Cycle: 1:1
Medium parameters used: $f = 1900$ MHz; $\sigma = 1.408$ S/m; $\epsilon_r = 40.825$; $\rho = 1000$ kg/m³
Phantom section: Flat Section

DASY5 Configuration:

Probe: EX3DV4 - SN3933; ConvF(8.25, 8.25, 8.25); Calibrated: 9/24/2013; ; Electronics: DAE4 Sn1396
Phantom: SAM with CRP_2013_10_08_middle; Type: QD000P40CD; Serial: TP:1786
Measurement SW: DASY52, Version 52.8 (7); SEMCAD X Version 14.6.10 (7164)

Test Date: 2014-02-06; Ambient Temp: 21.1; Tissue Temp: 21.5

1900 MHz System Verification

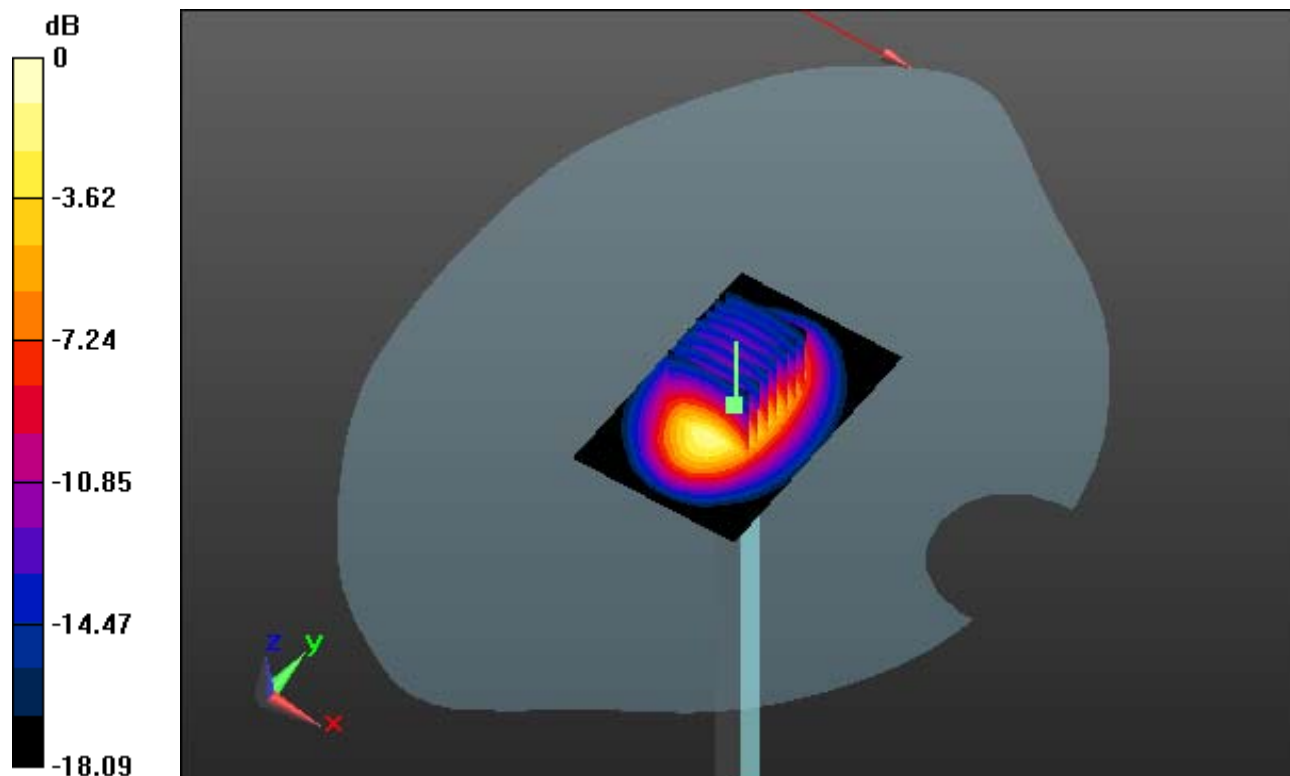
Area Scan (61x91x1): Interpolated grid: dx=15mm, dy=15mm

Zoom Scan (7x7x7)/Cube 0: Measurement grid: dx=5mm, dy=5mm, dz=5mm

Power Drift = 0.03 dB

Peak SAR (extrapolated) = 19.9 W/kg

SAR(1 g) = 10.6 W/kg; SAR(10 g) = 5.46 W/kg



0 dB = 14.4 W/kg

DIGITAL EMC CO., LTD

DUT: Dipole 1900 MHz; Type: D1900V2; Serial: D1900V2 - SN:5d176

Communication System: CW; Frequency: 1900 MHz; Duty Cycle: 1:1
Medium parameters used: $f = 1900$ MHz; $\sigma = 1.408$ S/m; $\epsilon_r = 40.825$; $\rho = 1000$ kg/m³
Phantom section: Flat Section

DASY5 Configuration:

Probe: EX3DV4 - SN3933; ConvF(8.25, 8.25, 8.25); Calibrated: 9/24/2013; ; Electronics: DAE4 Sn1396
Phantom: SAM with CRP_2013_10_08_middle; Type: QD000P40CD; Serial: TP:1786
Measurement SW: DASY52, Version 52.8 (7); SEMCAD X Version 14.6.10 (7164)

Test Date: 2014-02-06; Ambient Temp: 21.1; Tissue Temp: 21.5

1900 MHz System Verification

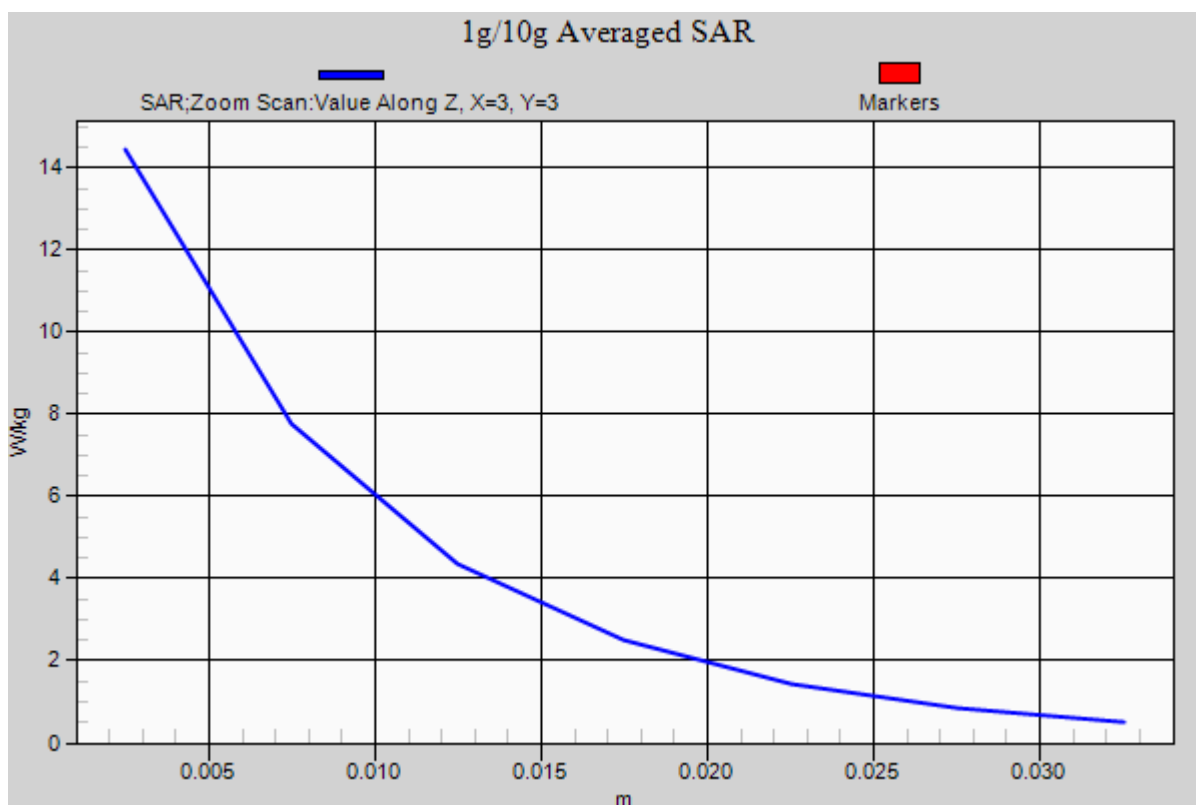
Area Scan (61x91x1): Interpolated grid: dx=15mm, dy=15mm

Zoom Scan (7x7x7)/Cube 0: Measurement grid: dx=5mm, dy=5mm, dz=5mm

Power Drift = 0.03 dB

Peak SAR (extrapolated) = 19.9 W/kg

SAR(1 g) = 10.6 W/kg; SAR(10 g) = 5.46 W/kg



DIGITAL EMC CO., LTD

DUT: Dipole 1900 MHz; Type: D1900V2; Serial: D1900V2 - SN:5d176

Communication System: CW; Frequency: 1900 MHz; Duty Cycle: 1:1
Medium parameters used: $f = 1900$ MHz; $\sigma = 1.51$ S/m; $\epsilon_r = 53.349$; $\rho = 1000$ kg/m³
Phantom section: Flat Section

DASY5 Configuration:

Probe: EX3DV4 - SN3933; ConvF(7.79, 7.79, 7.79); Calibrated: 9/24/2013; ; Electronics: DAE4 Sn1396
Phantom: SAM with CRP_2013_10_08_middle; Type: QD000P40CD; Serial: TP:1786
Measurement SW: DASY52, Version 52.8 (7); SEMCAD X Version 14.6.10 (7164)

Test Date: 2014-02-06; Ambient Temp: 21.1; Tissue Temp: 21.5

1900 MHz System Verification

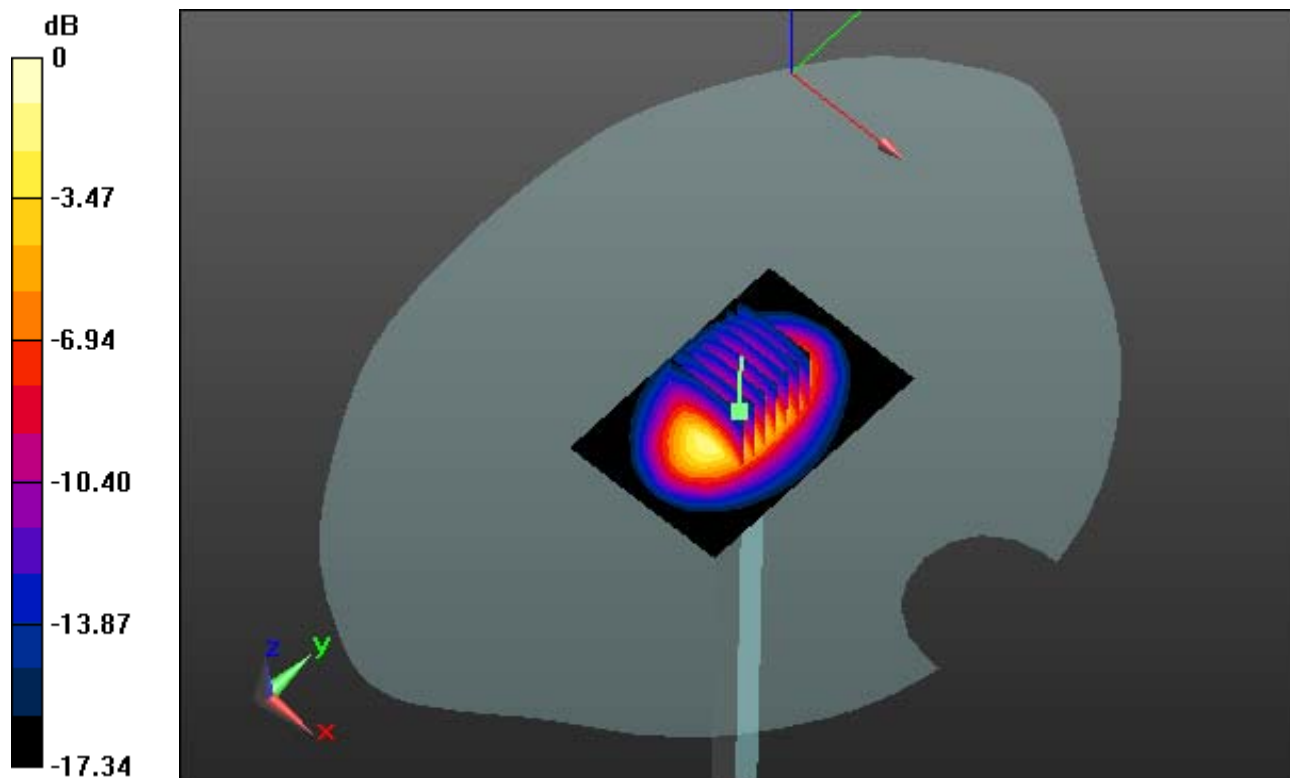
Area Scan (61x91x1): Interpolated grid: dx=15mm, dy=15mm

Zoom Scan (7x7x7)/Cube 0: Measurement grid: dx=5mm, dy=5mm, dz=5mm

Power Drift = 0.04 dB

Peak SAR (extrapolated) = 19.8 W/kg

SAR(1 g) = 10.8 W/kg; SAR(10 g) = 5.39 W/kg



0 dB = 14.3 W/kg

DIGITAL EMC CO., LTD

DUT: Dipole 1900 MHz; Type: D1900V2; Serial: D1900V2 - SN:5d176

Communication System: CW; Frequency: 1900 MHz; Duty Cycle: 1:1
Medium parameters used: $f = 1900$ MHz; $\sigma = 1.51$ S/m; $\epsilon_r = 53.349$; $\rho = 1000$ kg/m³
Phantom section: Flat Section

DASY5 Configuration:

Probe: EX3DV4 - SN3933; ConvF(7.79, 7.79, 7.79); Calibrated: 9/24/2013; ; Electronics: DAE4 Sn1396
Phantom: SAM with CRP_2013_10_08_middle; Type: QD000P40CD; Serial: TP:1786
Measurement SW: DASY52, Version 52.8 (7); SEMCAD X Version 14.6.10 (7164)

Test Date: 2014-02-06; Ambient Temp: 21.1; Tissue Temp: 21.5

1900 MHz System Verification

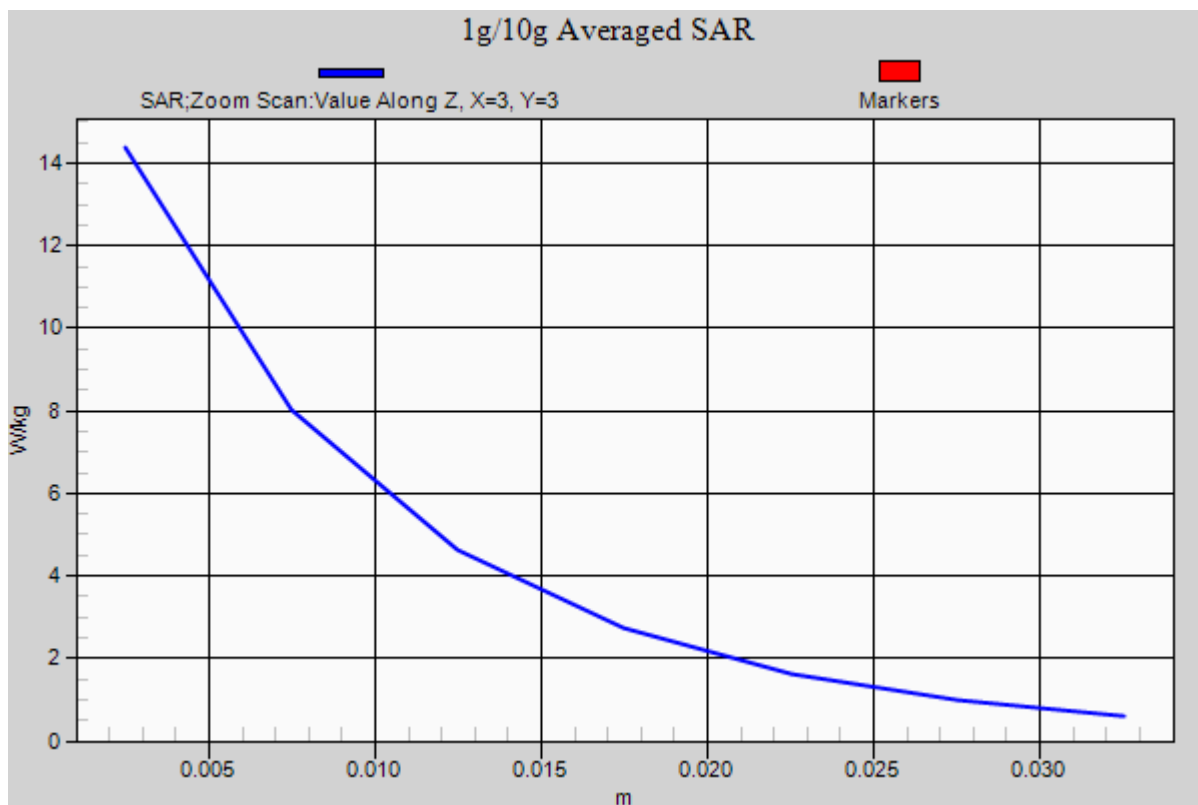
Area Scan (61x91x1): Interpolated grid: dx=15mm, dy=15mm

Zoom Scan (7x7x7)/Cube 0: Measurement grid: dx=5mm, dy=5mm, dz=5mm

Power Drift = 0.04 dB

Peak SAR (extrapolated) = 19.8 W/kg

SAR(1 g) = 10.8 W/kg; SAR(10 g) = 5.39 W/kg



DIGITAL EMC CO., LTD

DUT: Dipole 2450 MHz; Type: D2450V2; Serial: D2450V2 - SN:920

Communication System: CW; Frequency: 2450 MHz; Duty Cycle: 1:1
Medium parameters used: $f = 2450$ MHz; $\sigma = 1.847$ S/m; $\epsilon_r = 39.558$; $\rho = 1000$ kg/m³
Phantom section: Flat Section

DASY5 Configuration:

Probe: EX3DV4 - SN3933; ConvF(7.44, 7.44, 7.44); Calibrated: 9/24/2013; ; Electronics: DAE4 Sn1396
Phantom: SAM with CRP_2013_10_08_middle; Type: QD000P40CD; Serial: TP:1786
Measurement SW: DASY52, Version 52.8 (7); SEMCAD X Version 14.6.10 (7164)

Test Date: 2014-02-07; Ambient Temp: 21.3; Tissue Temp: 21.6

2450 MHz System Verification

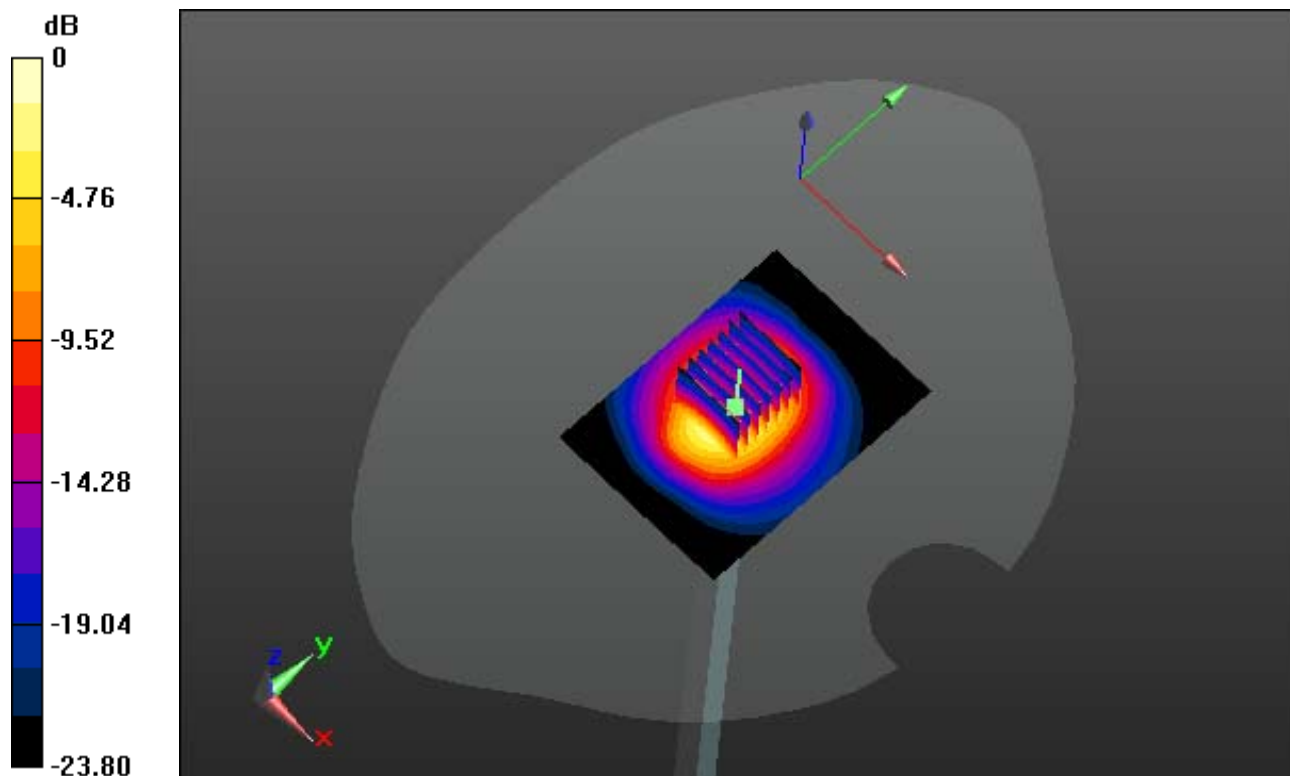
Area Scan (51x71x1): Interpolated grid: dx=12mm, dy=12mm

Zoom Scan (7x7x7)/Cube 0: Measurement grid: dx=5mm, dy=5mm, dz=5mm

Power Drift = 0.02 dB

Peak SAR (extrapolated) = 27.9 W/kg

SAR(1 g) = 12.8 W/kg; SAR(10 g) = 5.86 W/kg



0 dB = 18.2 W/kg

DIGITAL EMC CO., LTD

DUT: Dipole 2450 MHz; Type: D2450V2; Serial: D2450V2 - SN:920

Communication System: CW; Frequency: 2450 MHz; Duty Cycle: 1:1
Medium parameters used: $f = 2450$ MHz; $\sigma = 1.847$ S/m; $\epsilon_r = 39.558$; $\rho = 1000$ kg/m³
Phantom section: Flat Section

DASY5 Configuration:

Probe: EX3DV4 - SN3933; ConvF(7.44, 7.44, 7.44); Calibrated: 9/24/2013; ; Electronics: DAE4 Sn1396
Phantom: SAM with CRP_2013_10_08_middle; Type: QD000P40CD; Serial: TP:1786
Measurement SW: DASY52, Version 52.8 (7); SEMCAD X Version 14.6.10 (7164)

Test Date: 2014-02-07; Ambient Temp: 21.3; Tissue Temp: 21.6

2450 MHz System Verification

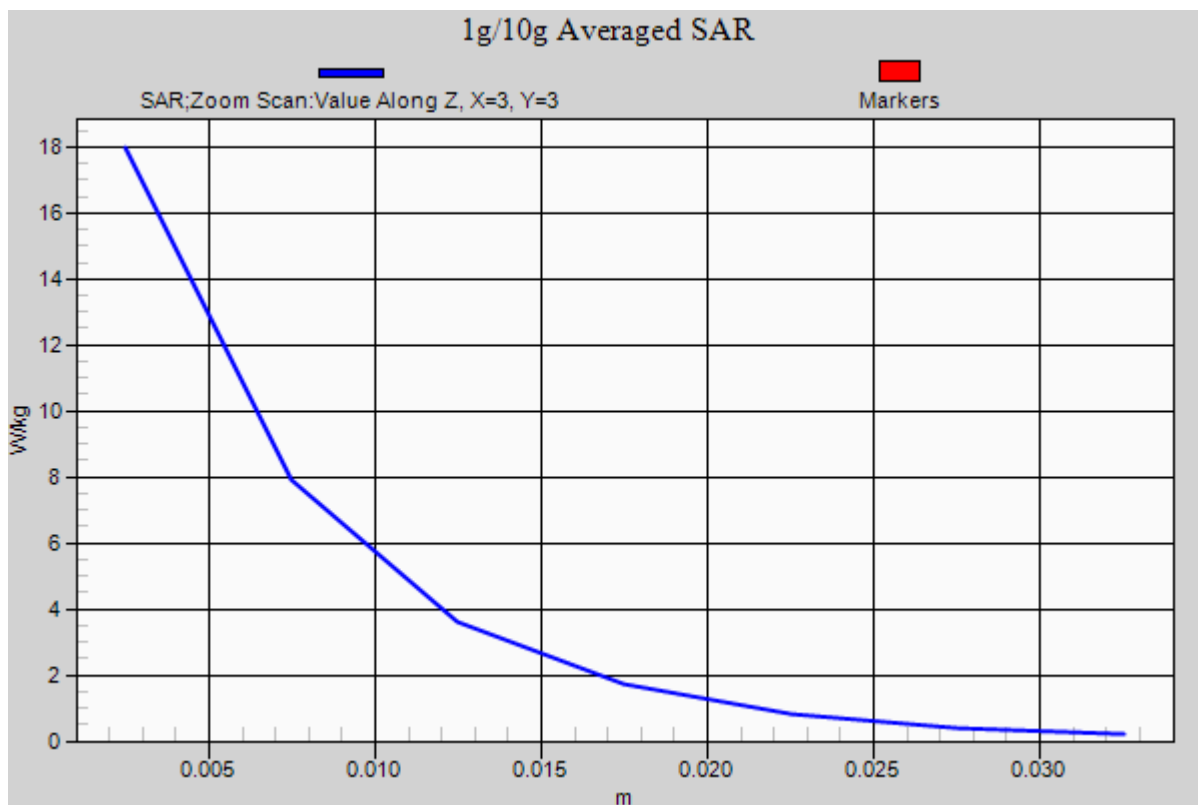
Area Scan (51x71x1): Interpolated grid: dx=12mm, dy=12mm

Zoom Scan (7x7x7)/Cube 0: Measurement grid: dx=5mm, dy=5mm, dz=5mm

Power Drift = 0.02 dB

Peak SAR (extrapolated) = 27.9 W/kg

SAR(1 g) = 12.8 W/kg; SAR(10 g) = 5.86 W/kg



DIGITAL EMC CO., LTD

DUT: Dipole 2450 MHz; Type: D2450V2; Serial: D2450V2 - SN:920

Communication System: CW; Frequency: 2450 MHz; Duty Cycle: 1:1
Medium parameters used: $f = 2450$ MHz; $\sigma = 1.95$ S/m; $\epsilon_r = 51.695$; $\rho = 1000$ kg/m³
Phantom section: Flat Section

DASY5 Configuration:

Probe: EX3DV4 - SN3933; ConvF(7.36, 7.36, 7.36); Calibrated: 9/24/2013; ; Electronics: DAE4 Sn1396
Phantom: SAM with CRP_2013_10_08_middle; Type: QD000P40CD; Serial: TP:1786
Measurement SW: DASY52, Version 52.8 (7); SEMCAD X Version 14.6.10 (7164)

Test Date: 2014-02-07; Ambient Temp: 21.3; Tissue Temp: 21.6

2450 MHz System Verification

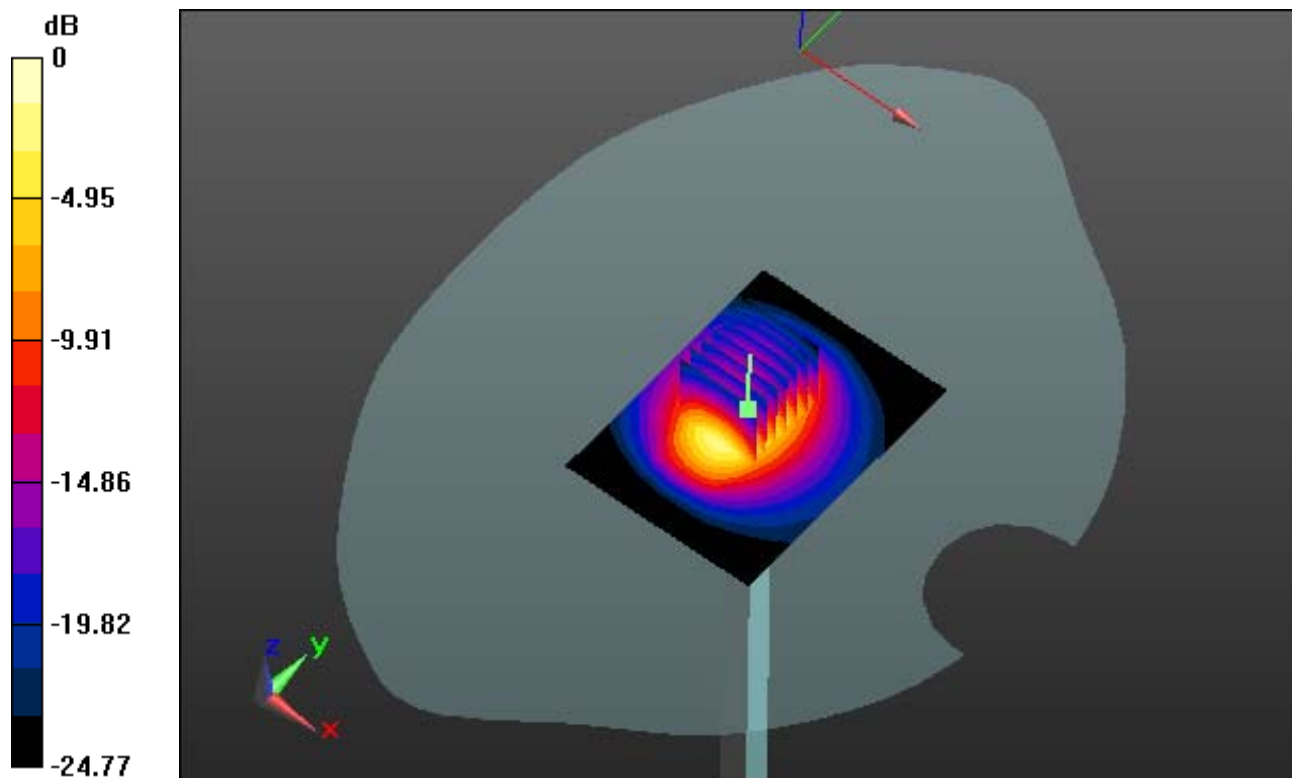
Area Scan (61x81x1): Interpolated grid: dx=12mm, dy=12mm

Zoom Scan (7x7x7)/Cube 0: Measurement grid: dx=5mm, dy=5mm, dz=5mm

Power Drift = 0.04 dB

Peak SAR (extrapolated) = 29.0 W/kg

SAR(1 g) = 12.5 W/kg; SAR(10 g) = 5.88 W/kg



0 dB = 21.1 W/kg

DIGITAL EMC CO., LTD

DUT: Dipole 2450 MHz; Type: D2450V2; Serial: D2450V2 - SN:920

Communication System: CW; Frequency: 2450 MHz; Duty Cycle: 1:1
Medium parameters used: $f = 2450$ MHz; $\sigma = 1.95$ S/m; $\epsilon_r = 51.695$; $\rho = 1000$ kg/m³
Phantom section: Flat Section

DASY5 Configuration:

Probe: EX3DV4 - SN3933; ConvF(7.36, 7.36, 7.36); Calibrated: 9/24/2013; ; Electronics: DAE4 Sn1396
Phantom: SAM with CRP_2013_10_08_middle; Type: QD000P40CD; Serial: TP:1786
Measurement SW: DASY52, Version 52.8 (7); SEMCAD X Version 14.6.10 (7164)

Test Date: 2014-02-07; Ambient Temp: 21.3; Tissue Temp: 21.6

2450 MHz System Verification

Area Scan (61x81x1): Interpolated grid: dx=12mm, dy=12mm

Zoom Scan (7x7x7)/Cube 0: Measurement grid: dx=5mm, dy=5mm, dz=5mm

Power Drift = 0.04 dB

Peak SAR (extrapolated) = 29.0 W/kg

SAR(1 g) = 12.5 W/kg; SAR(10 g) = 5.88 W/kg

