



18. TEST PHOTOGRAPHS

See following Attached Pages for setup photographs.

FCC ID: ZNFA380	 PCTEST ENGINEERING LABORATORY, INC.	HAC (RF EMISSIONS) TEST REPORT	 LG	Reviewed by: Quality Manager
Filename: 0Y1307291491.ZNF	Test Dates: July 24-30, 2013	EUT Type: Portable Handset	Page 62 of 64	

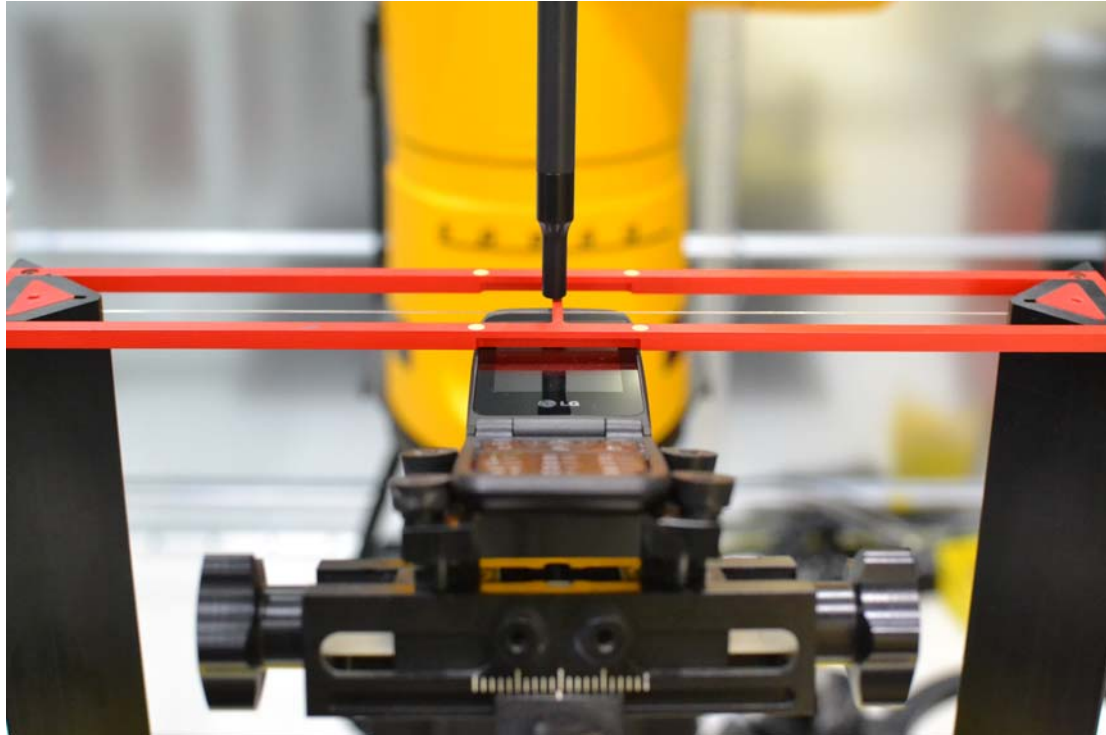


Figure 18-1
Ear Reference Point HAC Phantom Alignment

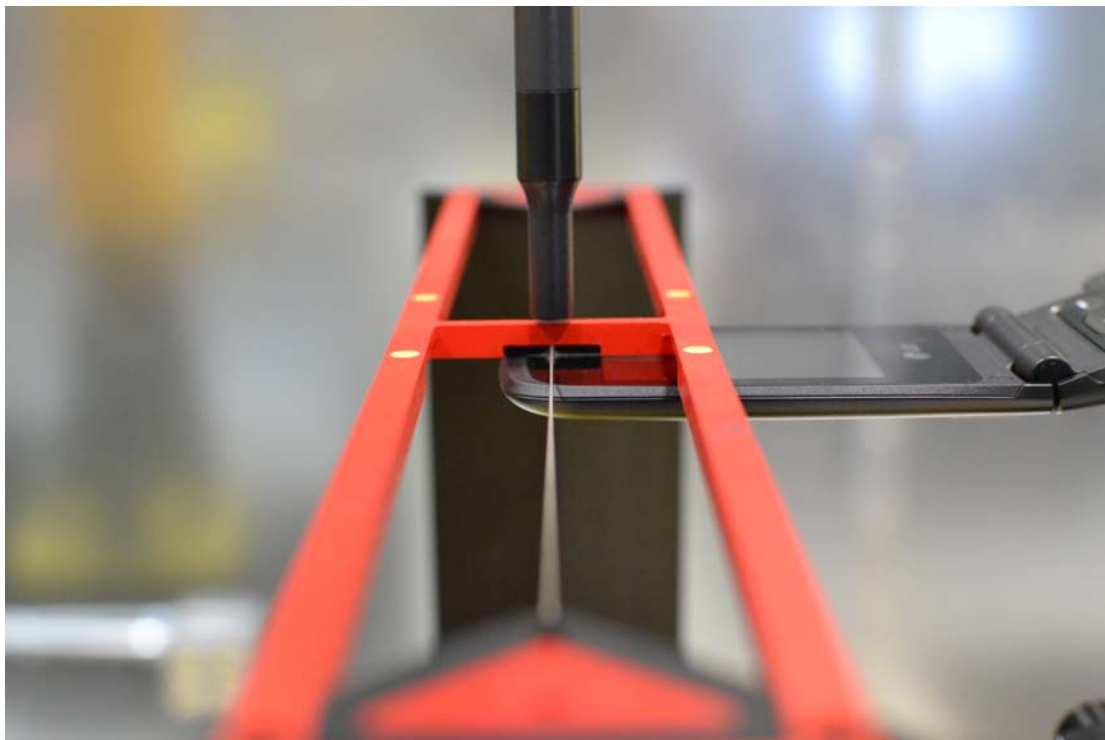




Figure 18-2
HAC Phantom Plane Alignment

FCC ID: ZNFA380		HAC (RF EMISSIONS) TEST REPORT		Reviewed by: Quality Manager
Filename: 0Y1307291491.ZNF	Test Dates: July 24-30, 2013	EUT Type: Portable Handset	Page 63 of 64	

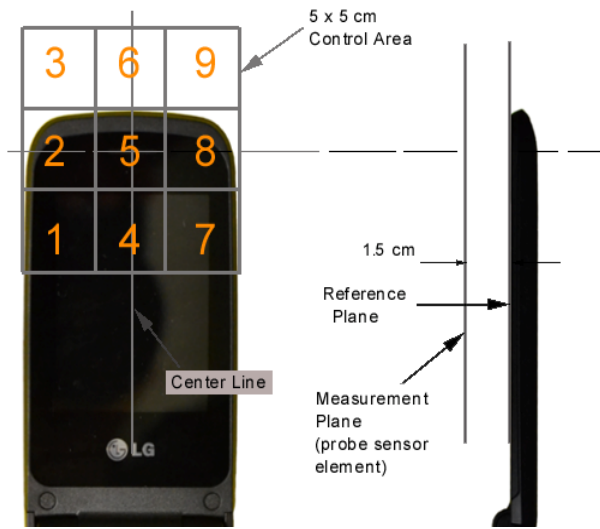




Figure 18-3 5x5 Scan grid above WD



Figure 18-4 E-Field WD Scan overlay

FCC ID: ZNFA380	 PCTEST ENGINEERING LABORATORY, INC.	HAC (RF EMISSIONS) TEST REPORT	 LG	Reviewed by: Quality Manager
Filename: 0Y1307291491.ZNF	Test Dates: July 24-30, 2013	EUT Type: Portable Handset		Page 64 of 64