

9362 Enterprise Cell V2.2

WCDMA B2/B5

Getting Started Guide



WELCOME

The Alcatel-Lucent 9362 Enterprise Cell provides enhanced mobile voice and data service within the building. It delivers high quality voice calls and faster, more reliable mobile data service.

The Alcatel-Lucent 9362 Enterprise Cell connects to your broadband Internet service to deliver extended indoor mobile network coverage. The in-building mobile phone connectivity, signal quality, and data bandwidth will greatly improve, especially if the building is in a remote area or out of adequate mobile phone tower range.

Inside this packaging you will find - the 9362 Enterprise Cell and an Ethernet cable. The 9362 Enterprise Cell has a zero touch set-up process. Just install as detailed in this guide and it connects to your mobile phone automatically whenever your phone is within range.

Before you begin you need to make sure you have the following:

- High Speed Internet service and an available Ethernet LAN port on your router.
- An available power socket or electrical outlet.
- A 3G phone registered for 3G service with your service provider



BOX CONTENTS

Getting Started Guide

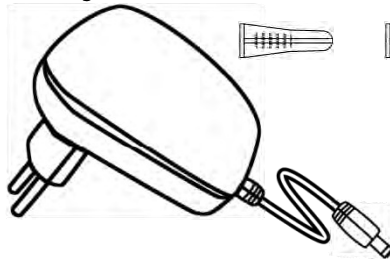
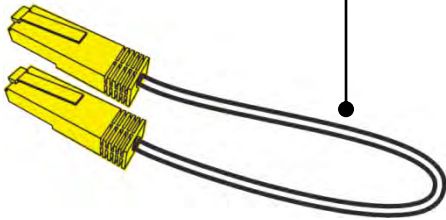
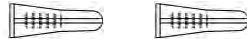
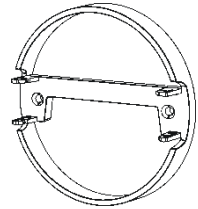
9362 Enterprise Cell V2.2
WCDMA B2/B5

Stand

Wall & Ceiling Mounting Kit

AC Power Adapter

Ethernet Cable



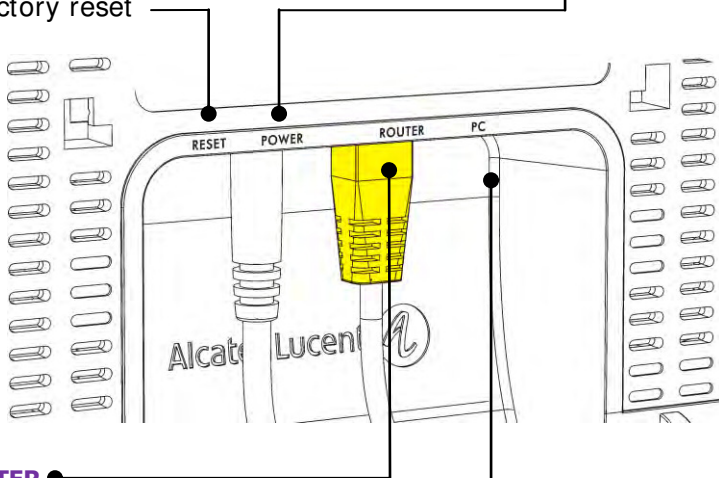
CONNECTION OVERVIEW

RESET

Press 4 - 15 seconds to reset
Press longer than 15 seconds
to factory reset

POWER

Connect the supplied AC/DC power adaptor. If you are using PoE+ , power comes from the PoE+ device and you do not use the AC/DC power adaptor.



ROUTER

1 Gigabit Ethernet connector for backhaul connection

If PoE+ is used to supply power then connect this to a PoE+ capable router or PoE+ injector (supplied AC/DC power adaptor is not used)

PC

1 Gigabit Ethernet pass-through connector can be connected to other devices such as a PC or a router

QUICK SETUP

1. Find a suitable location

To get the best results from the Enterprise Cell it should be placed high up and as centrally as possible, since it emits a radio signal similar to a Wi-Fi router.

Avoid placing it near metallic objects, windows or other radio transmitters.

2. Install unit

The unit can stand on a flat surface or be mounted on a wall or ceiling


3. Connect Ethernet cable

Plug one end of the included Ethernet cable into a port on your router. Plug the other end of the Ethernet cable into the Router port of the Enterprise Cell.

4. Connect power cable

Connect one end of the power adaptor into a power socket and the other into the Enterprise Cell. The unit should start up automatically and begin the auto-configuration process.

5. Auto-configuration

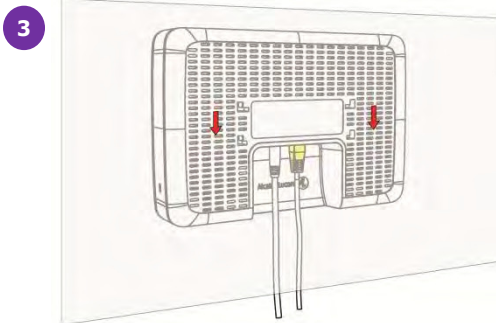
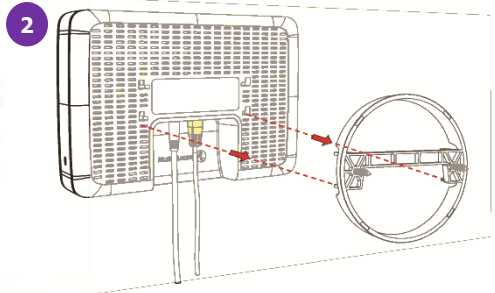
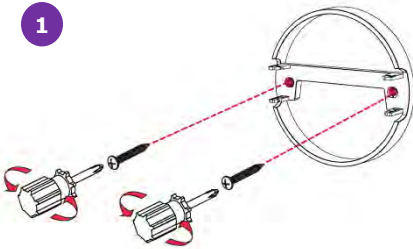
The auto-configuration process takes about 15 minutes and involves the Enterprise Cell connecting to your Internet Service Provider, updating its software and rebooting. During this time the Internet icon @ will be white and pulsing. When the Internet icon @ and the Service icon  are steady and white the process is complete.

INSTALLATION

DESK

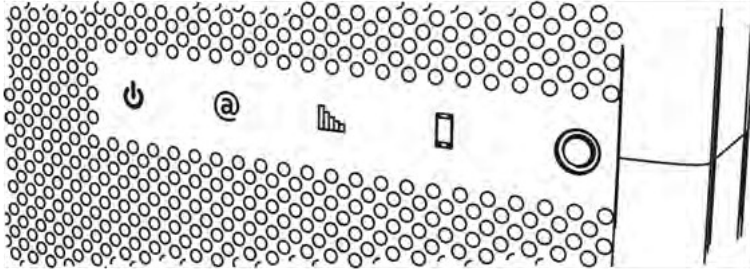


WALL & CEILING



For wall or ceiling mounting connect the cables to the Enterprise Cell before mounting the Enterprise Cell on the stand

STATUS ICONS



- ⏻ Power:** Red – the Enterprise Cell is powered on
Flashing red – a problem has been detected, please contact your service provider
- @ Internet:** White – an Internet connection has been established
Pulsing white – connection in progress
Orange – slow network connection
- 📊 Service:** White – the Enterprise Cell is ready for use
Orange – the Enterprise Cell is ready for use but there are problems that might affect performance
- 📱 Users:** White – the Enterprise Cell is ready for use
Orange – the Enterprise Cell is ready for use but there are problems that might affect performance

FAQs

How do I know that I am using my Enterprise Cell service?

Your mobile phone display will automatically indicate if you are within Femtozone signal range. If registered and configured properly your mobile phone should display a Femtozone service message and an associated signal indicator.

Will my call drop if I leave Enterprise in the middle of a call?

If you move out of range of the Enterprise Cell your call will be automatically transferred to the next available network service offered by your mobile service provider (carrier), without disconnecting your call. If no other mobile network is available your call will be disconnected.

What happens if my broadband connection fails?

If you lose your broadband connection the user status will turn orange and your Enterprise Cell coverage will stop. The Enterprise Cell service will return when the broadband connection is recovered.

What happens if my Enterprise Cell stops operating – can I still place a call?

If your Enterprise Cell stops operating (e.g. if you have lost your broadband connection) then you will no longer be able to place calls through the Enterprise Cell. However if you have coverage from the mobile network of your mobile service provider you can still place calls normally.

9362 Enterprise Cell – Getting Started Guide

Safety Notes

GENERAL: Please read this Getting Started Guide carefully before using the 9362 Enterprise Cell. The 9362 Enterprise Cell's purpose is to provide improved mobile signal coverage inside a building. Do not use this device for any other purpose, as doing so may be dangerous.

POWER: This product is intended to be supplied by a Listed Limited Power Source. This can be performed by a power adapter output rated 12 VDC, minimum 2.0 A or a PoE rated 48-56 VDC, minimum 0.6 A. These units shall be "LPS" marked and rated for a minimum ambient temperature of 45°C.

CONDITIONS OF USE: The 9362 Enterprise Cell and all its components (including cables and power adaptor) should be placed in a dry, indoor area, at elevated heights such as on top of shelves, cabinets, etc. It should be kept away from any wet or damp environments; such as kitchens, bathrooms, laundry rooms or any other areas with exposure to moisture, sprays, drips, or running water. For the safety of stored data, it should not be placed near magnetic devices such as audio or video tapes, diskettes or credit cards. While in service, the antenna should not be collocated with any another antenna or transmitting device. Altitude 2000 m max. Ambient temperature 45°C max.

MEDICAL DEVICES: The 9362 Enterprise Cell contains a radio

transmitter similar to other residential radio transmitters. Medical devices such as pacemakers and hearing aids may be affected, unless precautions are taken, when using this device. Please contact your General Practitioner for additional safety guidelines.

COMPLIANCE WITH APPLICABLE EXPOSURE LIMITS:

The 9362 Enterprise Cell has a radio emission level well below regulatory limits for public exposure to radiofrequency emissions. It thus complies with the European Recommendation 1999/519/EC of 12 July 1999.

The European standard EN 50385 specifies the conditions for compliance with regulatory limits for public exposure; in particular in the limiting case where the user would be located at less than 20 cm of the unit in operation, the Specific Absorption Rate (SAR) must be less than 2 W / kg.

The 9362 Enterprise Cell, having a maximum radio output power of 0.25 W, is consistent with EN 50385 even when it is in this maximum power and in the immediate vicinity of the human body.

EMERGENCY: The 9362 Enterprise Cell does not operate during instances of power loss. To make emergency calls, please use a mobile or land line phones.

POWER SUPPLY: Ensure that the voltage specified corresponds to the power socket to which you connect it. In case of power loss (and therefore loss of

service), all mobile calls, including emergency calls, will be redirected automatically to the default mobile (carrier) network. If you have no mobile network coverage and need to make an emergency call, please use a land line. In case of a thunderstorm, please disconnect the device to avoid damaging it. For safety reasons, only service technician's skills can open the device.



DISPOSAL & RECYCLING: To facilitate disposal and/or recycling, please respect the sorting rules of your country or region for this kind of device. European regulations require the disposal of this device at sales points or at designated collection points such as drop-off centers, etc.

Copyright © 2012 Alcatel-Lucent. All rights reserved.

The information presented is subject to change without notice. Alcatel-Lucent assumes no responsibility for inaccuracies contained herein.

NOTICE OF LIABILITY: Every effort has been made to ensure that this guide contains accurate and current information. However Alcatel-Lucent and the author shall not be liable for any loss or damage suffered by readers as a result of any information contained herein.

TRADEMARKS: Alcatel-Lucent and the Alcatel-Lucent logo are registered trademarks of Alcatel-Lucent. All other trademarks are the property of their respective owners.

FCC Statement: This device complies with part 15 of the FCC Rules. Operation is subject to the following two conditions:

(1) This device may not cause harmful interference, and

(2) This device must accept any interference received, including interference that may cause undesired operation.

NOTE: This equipment has been tested and found to comply with the limits for a Class B digital device, pursuant to part 15 of the FCC Rules. These limits are designed to provide reasonable protection against harmful interference in a residential installation. This equipment generates, uses and can radiate radio frequency energy and, if not installed and used in accordance with the instructions, may cause harmful interference to radio communications. However, there is no guarantee that interference will not occur in a particular installation. If this equipment does cause harmful interference to radio or television reception, which can be determined by turning the equipment off and on, the user is encouraged to try to correct the interference by one or more of the following measures:

9362 Enterprise Cell – Getting Started Guide

- Reorient or relocate the receiving antenna.
- Increase the separation between the equipment and receiver.
- Connect the equipment into an outlet on a circuit different from that to which the receiver is connected.
- Consult the dealer or an experienced radio/TV technician for help.

CAUTION

Changes or modifications not expressly approved by the party responsible for compliance could void the user's authority to operate the equipment.

This device and its antennas(s) must not be co-located or operating in conjunction with any other antenna or transmitter except in accordance with FCC multi-transmitter product procedures.

IMPORTANT NOTE:

Radiation Exposure Statement:

This equipment complies with FCC RF radiation exposure limits set forth for an uncontrolled environment. This equipment should be installed and operated with minimum distance 20cm between the radiator and your body.

www.alcatel-lucent.com

Alcatel-Lucent 