

Fig.23

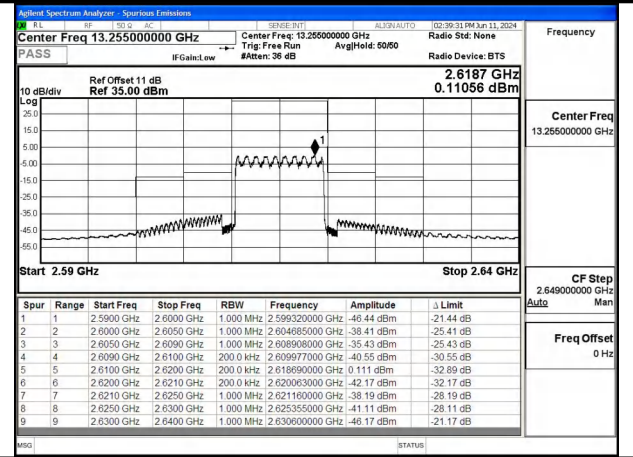


Fig.24

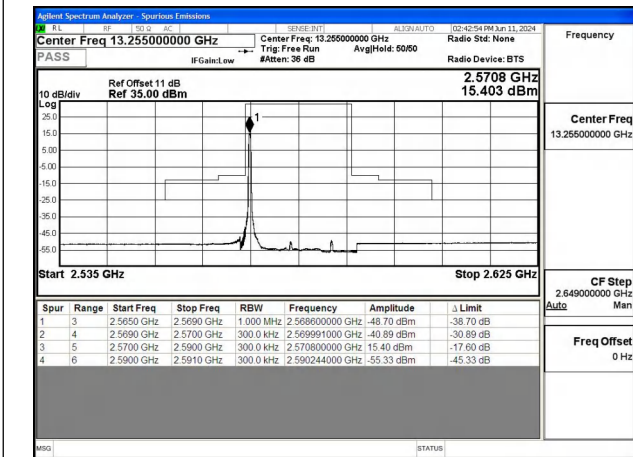


Fig.25

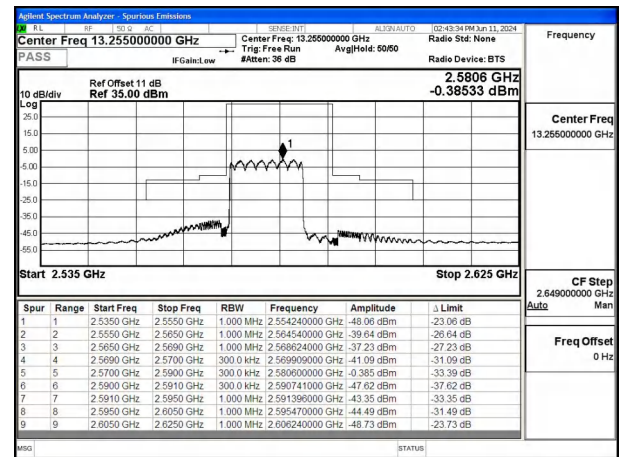


Fig.26

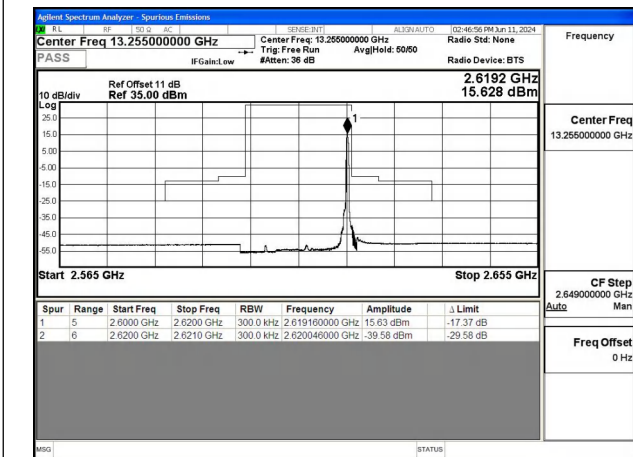


Fig.27

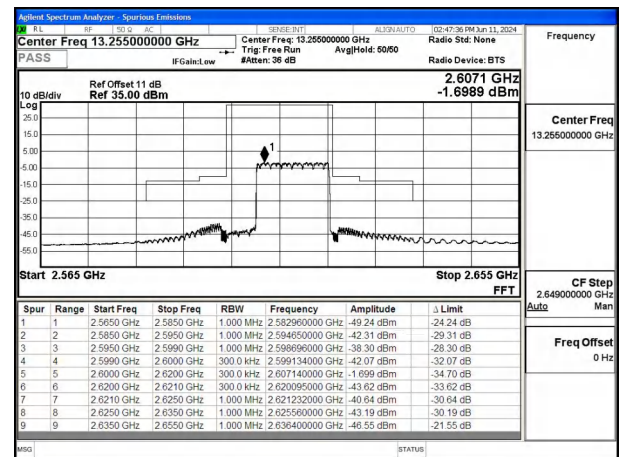


Fig.28

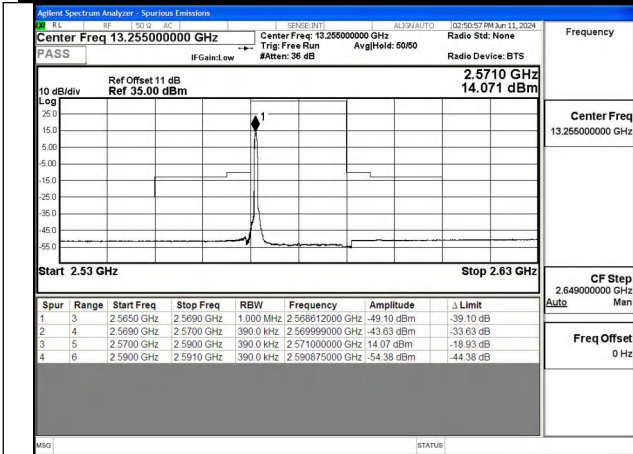


Fig.29

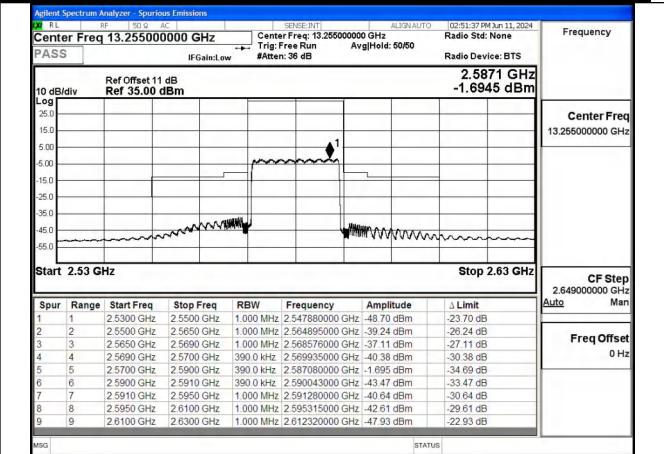


Fig.30

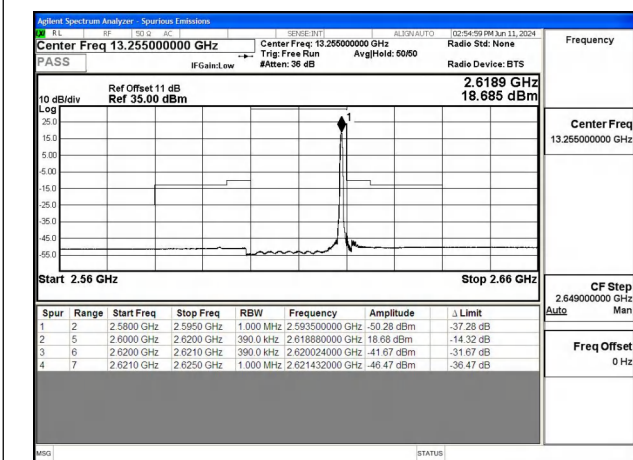


Fig.31

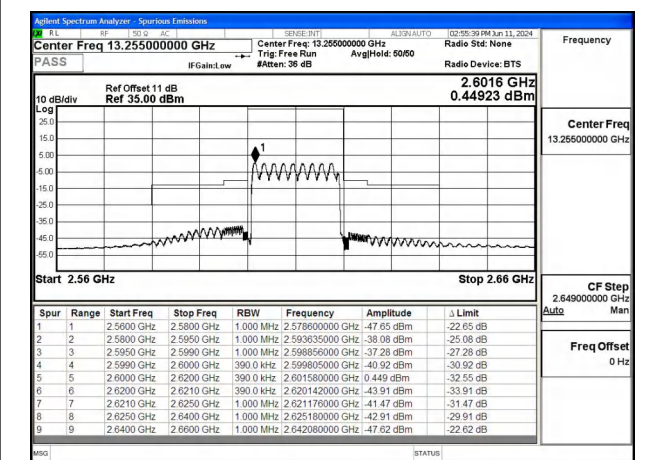


Fig.32

Test Mode: 64QAM

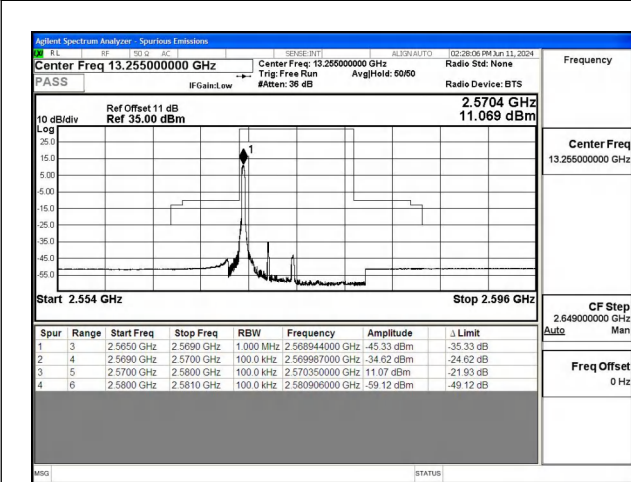


Fig.33

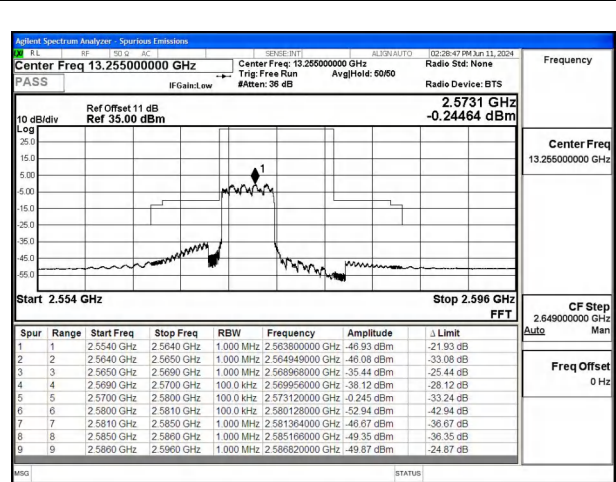


Fig.34

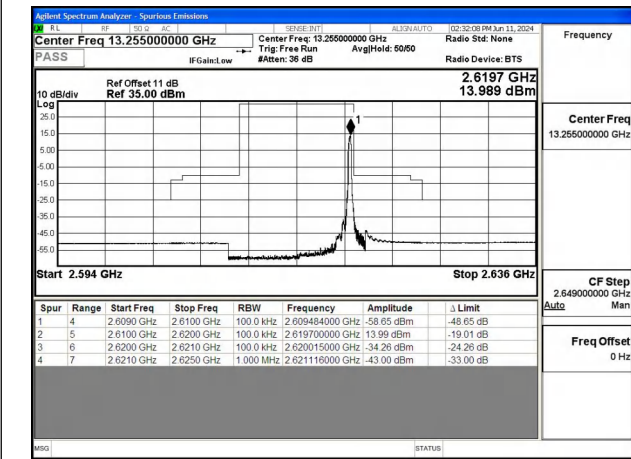


Fig.35

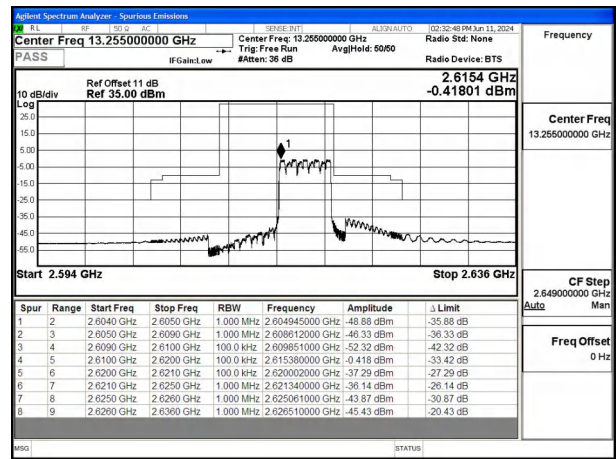


Fig.36

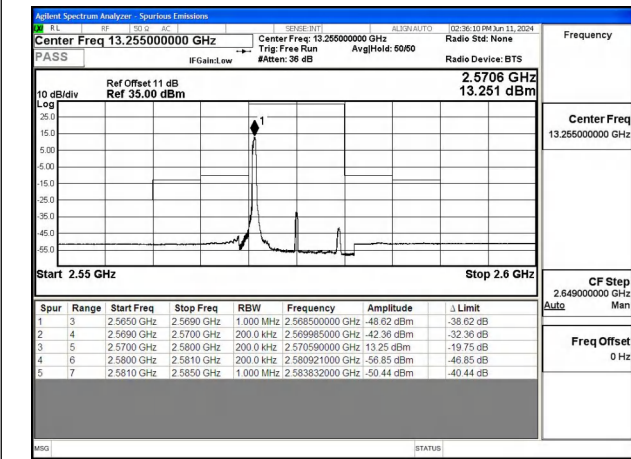


Fig.37

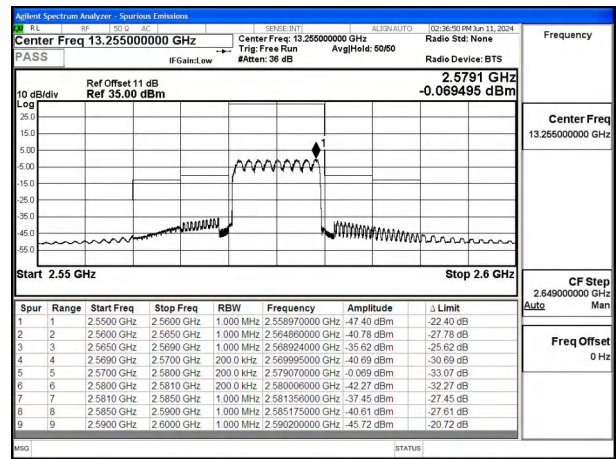


Fig.38

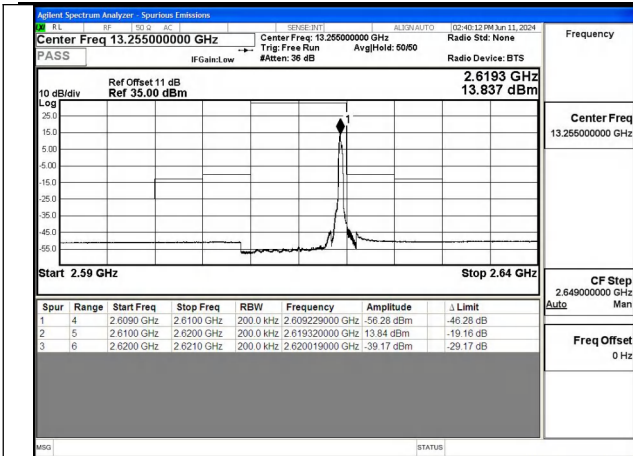


Fig.39

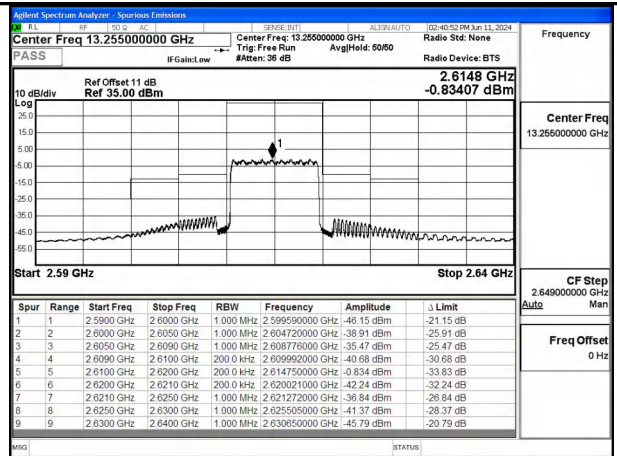


Fig.40

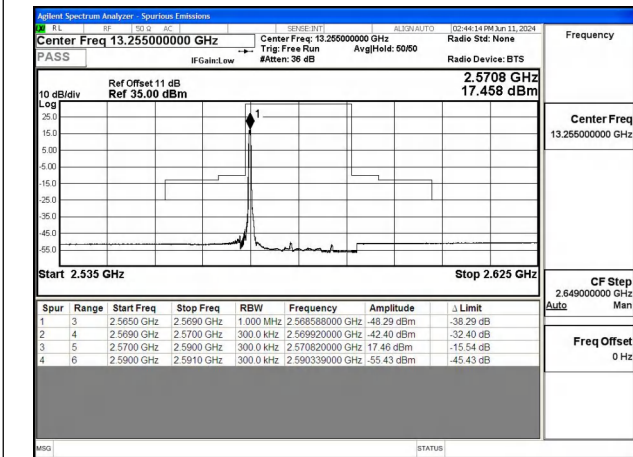


Fig.41

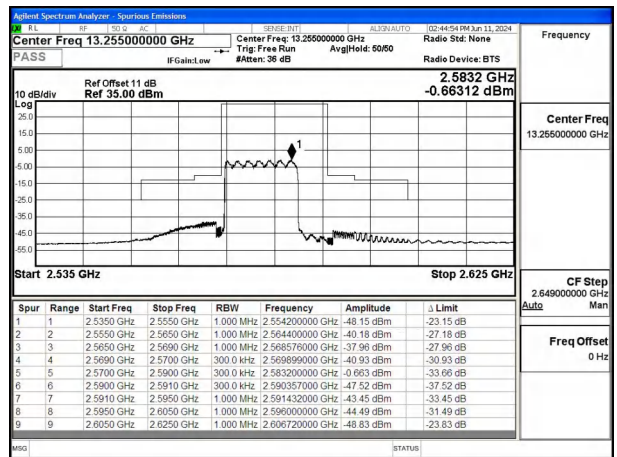


Fig.42

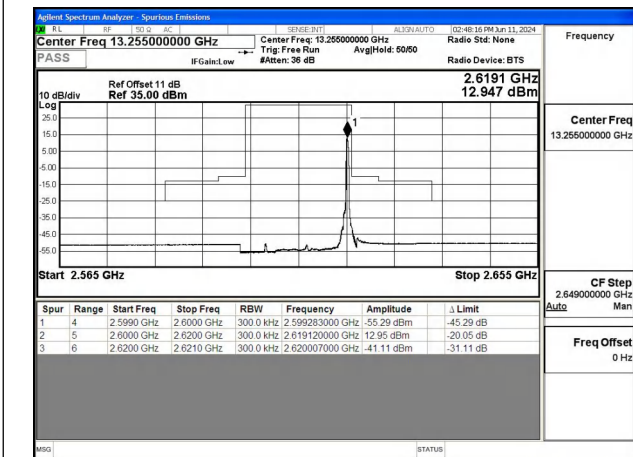


Fig.43

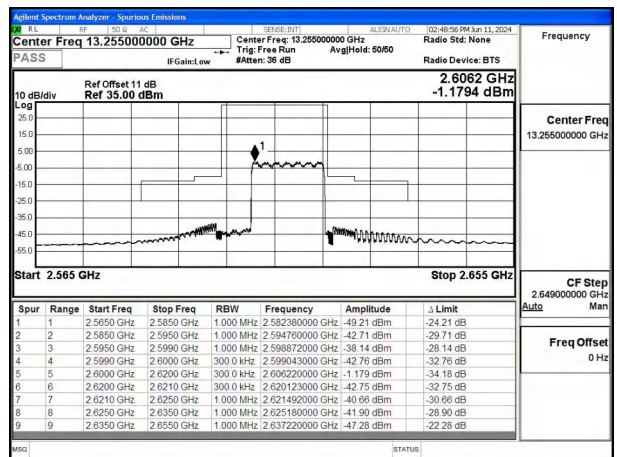


Fig.44

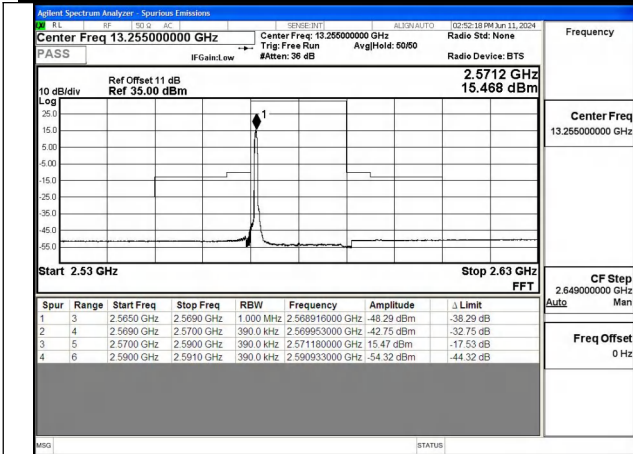


Fig.45

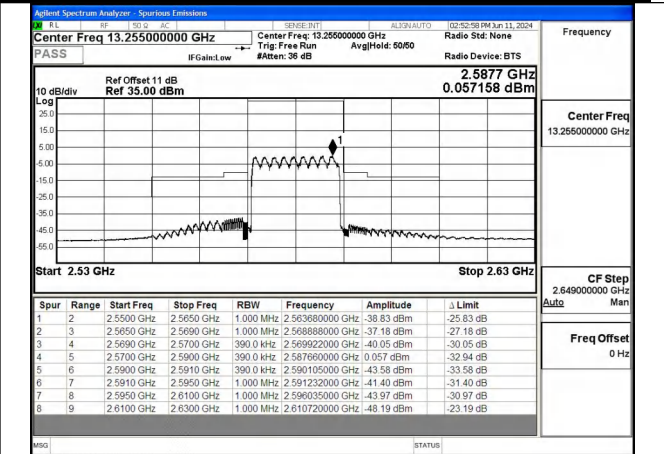


Fig.46

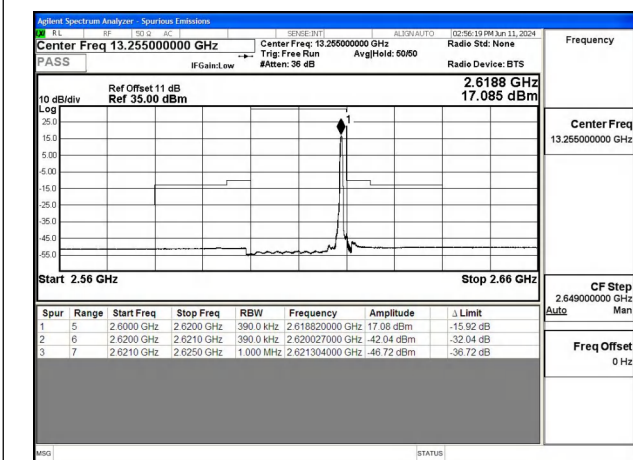


Fig.47

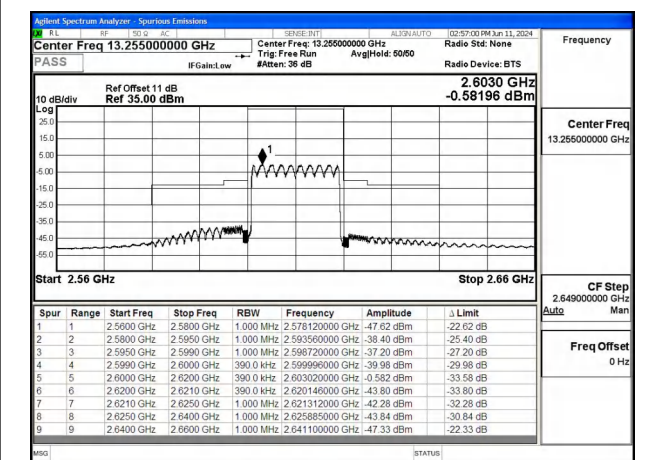


Fig.48

**7 Frequency Stability**

Temperature(°C)	Voltage	Test Result (ppm) Band 38 Low Channel QPSK			
		5M	10M	15M	20M
-30	NV	-0.002	0.001	0.001	-0.002
-20	NV	-0.003	0.001	-0.001	0.001
-10	NV	-0.003	0.000	0.001	-0.002
0	NV	-0.003	0.000	-0.001	0.002
+10	NV	-0.003	-0.001	-0.002	0.002
+20	NV	-0.003	0.001	-0.002	0.002
+30	NV	-0.003	0.000	-0.003	0.002
+40	NV	-0.004	0.001	-0.002	0.002
+50	NV	-0.004	0.000	0.001	0.002
+20	LV	-0.003	0.001	0.002	0.001
+20	HV	-0.003	0.000	0.001	0.001

Temperature(°C)	Voltage	Test Result (ppm) Band 38 High Channel QPSK			
		5M	10M	15M	20M
-30	NV	0.001	-0.002	0.001	0.002
-20	NV	0.001	0.001	-0.002	0.002
-10	NV	0.003	-0.001	-0.001	0.001
0	NV	0.002	0.001	0.001	0.002
+10	NV	0.002	0.001	0.001	0.002
+20	NV	0.002	0.002	-0.002	0.002
+30	NV	0.002	0.001	0.002	0.002
+40	NV	0.003	0.002	0.002	0.001
+50	NV	0.002	0.001	0.002	0.002
+20	LV	0.002	0.002	-0.002	0.001
+20	HV	0.002	0.002	-0.003	0.002

**8 Effective Radiated Power and Effective Isotropic Radiated Power**

Modulation	Carrier frequency (MHz)	UL Channel	BW	RB Size	RB Offset	Conducted power (dBm)	ERP/ EIRP (dBm)	ERP/ EIRP (W)
QPSK	2572.5	37775	5	1	0	22.13	26.63	0.460
QPSK	2572.5	37775	5	1	12	22.23	26.73	0.471
QPSK	2572.5	37775	5	1	24	22.11	26.61	0.458
QPSK	2572.5	37775	5	12	0	21.24	25.74	0.375
QPSK	2572.5	37775	5	12	7	21.20	25.70	0.372
QPSK	2572.5	37775	5	12	13	21.24	25.74	0.375
QPSK	2572.5	37775	5	25	0	21.10	25.60	0.363
QPSK	2595	38000	5	1	0	21.85	26.35	0.432
QPSK	2595	38000	5	1	12	21.89	26.39	0.436
QPSK	2595	38000	5	1	24	21.92	26.42	0.439
QPSK	2595	38000	5	12	0	20.98	25.48	0.353
QPSK	2595	38000	5	12	7	20.94	25.44	0.350
QPSK	2595	38000	5	12	13	20.99	25.49	0.354
QPSK	2595	38000	5	25	0	20.88	25.38	0.345
QPSK	2617.5	38225	5	1	0	22.35	26.85	0.484
QPSK	2617.5	38225	5	1	12	22.49	26.99	0.500
QPSK	2617.5	38225	5	1	24	22.42	26.92	0.492
QPSK	2617.5	38225	5	12	0	21.44	25.94	0.393
QPSK	2617.5	38225	5	12	7	21.51	26.01	0.399
QPSK	2617.5	38225	5	12	13	21.49	25.99	0.397
QPSK	2617.5	38225	5	25	0	21.46	25.96	0.394

Modulation	Carrier frequency (MHz)	UL Channel	BW	RB Size	RB Offset	Conducted power (dBm)	ERP/ EIRP (dBm)	ERP/ EIRP (W)
16QAM	2572.5	37775	5	1	0	21.56	26.06	0.404
16QAM	2572.5	37775	5	1	12	21.63	26.13	0.410
16QAM	2572.5	37775	5	1	24	21.44	25.94	0.393
16QAM	2572.5	37775	5	12	0	20.38	24.88	0.308
16QAM	2572.5	37775	5	12	7	20.25	24.75	0.299
16QAM	2572.5	37775	5	12	13	20.12	24.62	0.290
16QAM	2572.5	37775	5	25	0	20.23	24.73	0.297
16QAM	2595	38000	5	1	0	20.76	25.26	0.336
16QAM	2595	38000	5	1	12	21.52	26.02	0.400
16QAM	2595	38000	5	1	24	21.43	25.93	0.392
16QAM	2595	38000	5	12	0	19.91	24.41	0.276
16QAM	2595	38000	5	12	7	20.01	24.51	0.282
16QAM	2595	38000	5	12	13	20.05	24.55	0.285
16QAM	2595	38000	5	25	0	19.97	24.47	0.280
16QAM	2617.5	38225	5	1	0	21.56	26.06	0.404
16QAM	2617.5	38225	5	1	12	21.64	26.14	0.411
16QAM	2617.5	38225	5	1	24	21.55	26.05	0.403
16QAM	2617.5	38225	5	12	0	20.39	24.89	0.308
16QAM	2617.5	38225	5	12	7	20.61	25.11	0.324
16QAM	2617.5	38225	5	12	13	20.49	24.99	0.316
16QAM	2617.5	38225	5	25	0	20.54	25.04	0.319
64QAM	2572.5	37775	5	1	0	21.38	25.88	0.387
64QAM	2572.5	37775	5	1	12	21.77	26.27	0.424
64QAM	2572.5	37775	5	1	24	21.12	25.62	0.365
64QAM	2572.5	37775	5	12	0	20.27	24.77	0.300
64QAM	2572.5	37775	5	12	7	20.19	24.69	0.294
64QAM	2572.5	37775	5	12	13	20.17	24.67	0.293
64QAM	2572.5	37775	5	25	0	20.16	24.66	0.292
64QAM	2595	38000	5	1	0	21.25	25.75	0.376
64QAM	2595	38000	5	1	12	21.20	25.70	0.372
64QAM	2595	38000	5	1	24	20.64	25.14	0.327
64QAM	2595	38000	5	12	0	20.01	24.51	0.282
64QAM	2595	38000	5	12	7	20.11	24.61	0.289
64QAM	2595	38000	5	12	13	19.94	24.44	0.278
64QAM	2595	38000	5	25	0	20.06	24.56	0.286
64QAM	2617.5	38225	5	1	0	21.64	26.14	0.411
64QAM	2617.5	38225	5	1	12	21.81	26.31	0.428
64QAM	2617.5	38225	5	1	24	21.69	26.19	0.416
64QAM	2617.5	38225	5	12	0	20.44	24.94	0.312
64QAM	2617.5	38225	5	12	7	20.58	25.08	0.322
64QAM	2617.5	38225	5	12	13	20.60	25.10	0.324
64QAM	2617.5	38225	5	25	0	20.46	24.96	0.313



Modulation	Carrier frequency (MHz)	UL Channel	BW	RB Size	RB Offset	Conducted power (dBm)	ERP/ EIRP (dBm)	ERP/ EIRP (W)
QPSK	2575	37800	10	1	0	22.18	26.68	0.466
QPSK	2575	37800	10	1	25	22.27	26.77	0.475
QPSK	2575	37800	10	1	49	22.14	26.64	0.461
QPSK	2575	37800	10	25	0	21.31	25.81	0.381
QPSK	2575	37800	10	25	12	21.23	25.73	0.374
QPSK	2575	37800	10	25	25	21.12	25.62	0.365
QPSK	2575	37800	10	50	0	21.22	25.72	0.373
QPSK	2595	38000	10	1	0	21.96	26.46	0.443
QPSK	2595	38000	10	1	25	21.95	26.45	0.442
QPSK	2595	38000	10	1	49	21.88	26.38	0.435
QPSK	2595	38000	10	25	0	20.94	25.44	0.350
QPSK	2595	38000	10	25	12	20.95	25.45	0.351
QPSK	2595	38000	10	25	25	20.96	25.46	0.352
QPSK	2595	38000	10	50	0	20.96	25.46	0.352
QPSK	2615	38200	10	1	0	22.24	26.74	0.472
QPSK	2615	38200	10	1	25	22.48	26.98	0.499
QPSK	2615	38200	10	1	49	22.43	26.93	0.493
QPSK	2615	38200	10	25	0	21.35	25.85	0.385
QPSK	2615	38200	10	25	12	21.39	25.89	0.388
QPSK	2615	38200	10	25	25	21.45	25.95	0.394
QPSK	2615	38200	10	50	0	21.40	25.90	0.389

Modulation	Carrier frequency (MHz)	UL Channel	BW	RB Size	RB Offset	Conducted power (dBm)	ERP/ EIRP (dBm)	ERP/ EIRP (W)
16QAM	2575	37800	10	1	0	21.27	25.77	0.378
16QAM	2575	37800	10	1	25	21.29	25.79	0.379
16QAM	2575	37800	10	1	49	21.61	26.11	0.408
16QAM	2575	37800	10	25	0	20.45	24.95	0.313
16QAM	2575	37800	10	25	12	20.23	24.73	0.297
16QAM	2575	37800	10	25	25	20.11	24.61	0.289
16QAM	2575	37800	10	50	0	20.25	24.75	0.299
16QAM	2595	38000	10	1	0	20.84	25.34	0.342
16QAM	2595	38000	10	1	25	21.08	25.58	0.361
16QAM	2595	38000	10	1	49	21.32	25.82	0.382
16QAM	2595	38000	10	25	0	19.97	24.47	0.280
16QAM	2595	38000	10	25	12	20.00	24.50	0.282
16QAM	2595	38000	10	25	25	19.88	24.38	0.274
16QAM	2595	38000	10	50	0	19.95	24.45	0.279
16QAM	2615	38200	10	1	0	21.67	26.17	0.414
16QAM	2615	38200	10	1	25	21.84	26.34	0.431
16QAM	2615	38200	10	1	49	21.62	26.12	0.409
16QAM	2615	38200	10	25	0	20.42	24.92	0.310
16QAM	2615	38200	10	25	12	20.38	24.88	0.308
16QAM	2615	38200	10	25	25	20.48	24.98	0.315
16QAM	2615	38200	10	50	0	20.41	24.91	0.310
64QAM	2575	37800	10	1	0	21.50	26.00	0.398
64QAM	2575	37800	10	1	25	21.07	25.57	0.361
64QAM	2575	37800	10	1	49	21.37	25.87	0.386
64QAM	2575	37800	10	25	0	20.28	24.78	0.301
64QAM	2575	37800	10	25	12	20.28	24.78	0.301
64QAM	2575	37800	10	25	25	20.12	24.62	0.290
64QAM	2575	37800	10	50	0	20.28	24.78	0.301
64QAM	2595	38000	10	1	0	21.25	25.75	0.376
64QAM	2595	38000	10	1	25	20.70	25.20	0.331
64QAM	2595	38000	10	1	49	21.01	25.51	0.356
64QAM	2595	38000	10	25	0	19.95	24.45	0.279
64QAM	2595	38000	10	25	12	19.96	24.46	0.279
64QAM	2595	38000	10	25	25	19.89	24.39	0.275
64QAM	2595	38000	10	50	0	19.99	24.49	0.281
64QAM	2615	38200	10	1	0	21.51	26.01	0.399
64QAM	2615	38200	10	1	25	21.06	25.56	0.360
64QAM	2615	38200	10	1	49	21.51	26.01	0.399
64QAM	2615	38200	10	25	0	20.42	24.92	0.310
64QAM	2615	38200	10	25	12	20.48	24.98	0.315
64QAM	2615	38200	10	25	25	20.51	25.01	0.317
64QAM	2615	38200	10	50	0	20.42	24.92	0.310

Modulation	Carrier frequency (MHz)	UL Channel	BW	RB Size	RB Offset	Conducted power (dBm)	ERP/ EIRP (dBm)	ERP/ EIRP (W)
QPSK	2577.5	37825	15	1	0	22.07	26.57	0.454
QPSK	2577.5	37825	15	1	37	21.94	26.44	0.441
QPSK	2577.5	37825	15	1	74	21.81	26.31	0.428
QPSK	2577.5	37825	15	36	0	21.08	25.58	0.361
QPSK	2577.5	37825	15	36	29	21.00	25.50	0.355
QPSK	2577.5	37825	15	36	30	20.97	25.47	0.352
QPSK	2577.5	37825	15	75	0	20.98	25.48	0.353
QPSK	2595	38000	15	1	0	21.84	26.34	0.431
QPSK	2595	38000	15	1	37	21.87	26.37	0.434
QPSK	2595	38000	15	1	74	21.73	26.23	0.420
QPSK	2595	38000	15	36	0	20.78	25.28	0.337
QPSK	2595	38000	15	36	29	20.75	25.25	0.335
QPSK	2595	38000	15	36	30	20.76	25.26	0.336
QPSK	2595	38000	15	75	0	20.77	25.27	0.337
QPSK	2612.5	38175	15	1	0	21.87	26.37	0.434
QPSK	2612.5	38175	15	1	37	22.35	26.85	0.484
QPSK	2612.5	38175	15	1	74	22.38	26.88	0.488
QPSK	2612.5	38175	15	36	0	21.05	25.55	0.359
QPSK	2612.5	38175	15	36	29	21.19	25.69	0.371
QPSK	2612.5	38175	15	36	30	21.20	25.70	0.372
QPSK	2612.5	38175	15	75	0	21.15	25.65	0.367

Modulation	Carrier frequency (MHz)	UL Channel	BW	RB Size	RB Offset	Conducted power (dBm)	ERP/ EIRP (dBm)	ERP/ EIRP (W)
16QAM	2577.5	37825	15	1	0	21.34	25.84	0.384
16QAM	2577.5	37825	15	1	37	21.44	25.94	0.393
16QAM	2577.5	37825	15	1	74	20.92	25.42	0.348
16QAM	2577.5	37825	15	36	0	20.16	24.66	0.292
16QAM	2577.5	37825	15	36	29	19.87	24.37	0.274
16QAM	2577.5	37825	15	36	30	19.95	24.45	0.279
16QAM	2577.5	37825	15	75	0	20.02	24.52	0.283
16QAM	2595	38000	15	1	0	20.94	25.44	0.350
16QAM	2595	38000	15	1	37	21.38	25.88	0.387
16QAM	2595	38000	15	1	74	21.19	25.69	0.371
16QAM	2595	38000	15	36	0	19.81	24.31	0.270
16QAM	2595	38000	15	36	29	19.75	24.25	0.266
16QAM	2595	38000	15	36	30	19.77	24.27	0.267
16QAM	2595	38000	15	75	0	19.81	24.31	0.270
16QAM	2612.5	38175	15	1	0	21.33	25.83	0.383
16QAM	2612.5	38175	15	1	37	21.66	26.16	0.413
16QAM	2612.5	38175	15	1	74	21.37	25.87	0.386
16QAM	2612.5	38175	15	36	0	20.09	24.59	0.288
16QAM	2612.5	38175	15	36	29	20.20	24.70	0.295
16QAM	2612.5	38175	15	36	30	20.22	24.72	0.296
16QAM	2612.5	38175	15	75	0	20.18	24.68	0.294
64QAM	2577.5	37825	15	1	0	21.35	25.85	0.385
64QAM	2577.5	37825	15	1	37	20.36	24.86	0.306
64QAM	2577.5	37825	15	1	74	20.93	25.43	0.349
64QAM	2577.5	37825	15	36	0	20.13	24.63	0.290
64QAM	2577.5	37825	15	36	29	19.90	24.40	0.275
64QAM	2577.5	37825	15	36	30	19.90	24.40	0.275
64QAM	2577.5	37825	15	75	0	20.01	24.51	0.282
64QAM	2595	38000	15	1	0	20.83	25.33	0.341
64QAM	2595	38000	15	1	37	20.65	25.15	0.327
64QAM	2595	38000	15	1	74	21.12	25.62	0.365
64QAM	2595	38000	15	36	0	19.77	24.27	0.267
64QAM	2595	38000	15	36	29	19.78	24.28	0.268
64QAM	2595	38000	15	36	30	19.70	24.20	0.263
64QAM	2595	38000	15	75	0	19.78	24.28	0.268
64QAM	2612.5	38175	15	1	0	20.79	25.29	0.338
64QAM	2612.5	38175	15	1	37	21.62	26.12	0.409
64QAM	2612.5	38175	15	1	74	21.33	25.83	0.383
64QAM	2612.5	38175	15	36	0	20.04	24.54	0.284
64QAM	2612.5	38175	15	36	29	20.23	24.73	0.297
64QAM	2612.5	38175	15	36	30	20.20	24.70	0.295
64QAM	2612.5	38175	15	75	0	20.18	24.68	0.294

Modulation	Carrier frequency (MHz)	UL Channel	BW	RB Size	RB Offset	Conducted power (dBm)	ERP/ EIRP (dBm)	ERP/ EIRP (W)
QPSK	2580	37850	20	1	0	21.96	26.46	0.443
QPSK	2580	37850	20	1	49	22.00	26.50	0.447
QPSK	2580	37850	20	1	99	21.74	26.24	0.421
QPSK	2580	37850	20	50	0	21.05	25.55	0.359
QPSK	2580	37850	20	50	24	20.97	25.47	0.352
QPSK	2580	37850	20	50	50	20.86	25.36	0.344
QPSK	2580	37850	20	100	0	20.87	25.37	0.344
QPSK	2595	38000	20	1	0	21.83	26.33	0.430
QPSK	2595	38000	20	1	49	21.60	26.10	0.407
QPSK	2595	38000	20	1	99	21.74	26.24	0.421
QPSK	2595	38000	20	50	0	20.81	25.31	0.340
QPSK	2595	38000	20	50	24	20.77	25.27	0.337
QPSK	2595	38000	20	50	50	20.72	25.22	0.333
QPSK	2595	38000	20	100	0	20.86	25.36	0.344
QPSK	2610	38150	20	1	0	21.83	26.33	0.430
QPSK	2610	38150	20	1	49	22.00	26.50	0.447
QPSK	2610	38150	20	1	99	22.35	26.85	0.484
QPSK	2610	38150	20	50	0	21.00	25.50	0.355
QPSK	2610	38150	20	50	24	21.15	25.65	0.367
QPSK	2610	38150	20	50	50	21.20	25.70	0.372
QPSK	2610	38150	20	100	0	21.11	25.61	0.364

Modulation	Carrier frequency (MHz)	UL Channel	BW	RB Size	RB Offset	Conducted power (dBm)	ERP/ EIRP (dBm)	ERP/ EIRP (W)
16QAM	2580	37850	20	1	0	21.17	25.67	0.369
16QAM	2580	37850	20	1	49	21.38	25.88	0.387
16QAM	2580	37850	20	1	99	21.27	25.77	0.378
16QAM	2580	37850	20	50	0	19.95	24.45	0.279
16QAM	2580	37850	20	50	24	20.02	24.52	0.283
16QAM	2580	37850	20	50	50	19.99	24.49	0.281
16QAM	2580	37850	20	100	0	19.89	24.39	0.275
16QAM	2595	38000	20	1	0	21.30	25.80	0.380
16QAM	2595	38000	20	1	49	20.93	25.43	0.349
16QAM	2595	38000	20	1	99	20.85	25.35	0.343
16QAM	2595	38000	20	50	0	19.81	24.31	0.270
16QAM	2595	38000	20	50	24	19.78	24.28	0.268
16QAM	2595	38000	20	50	50	19.71	24.21	0.264
16QAM	2595	38000	20	100	0	19.87	24.37	0.274
16QAM	2610	38150	20	1	0	21.53	26.03	0.401
16QAM	2610	38150	20	1	49	20.95	25.45	0.351
16QAM	2610	38150	20	1	99	21.43	25.93	0.392
16QAM	2610	38150	20	50	0	19.94	24.44	0.278
16QAM	2610	38150	20	50	24	20.16	24.66	0.292
16QAM	2610	38150	20	50	50	20.17	24.67	0.293
16QAM	2610	38150	20	100	0	19.99	24.49	0.281
64QAM	2580	37850	20	1	0	21.12	25.62	0.365
64QAM	2580	37850	20	1	49	21.22	25.72	0.373
64QAM	2580	37850	20	1	99	20.92	25.42	0.348
64QAM	2580	37850	20	50	0	20.06	24.56	0.286
64QAM	2580	37850	20	50	24	20.00	24.50	0.282
64QAM	2580	37850	20	50	50	19.89	24.39	0.275
64QAM	2580	37850	20	100	0	19.94	24.44	0.278
64QAM	2595	38000	20	1	0	20.96	25.46	0.352
64QAM	2595	38000	20	1	49	20.46	24.96	0.313
64QAM	2595	38000	20	1	99	20.91	25.41	0.348
64QAM	2595	38000	20	50	0	19.77	24.27	0.267
64QAM	2595	38000	20	50	24	19.78	24.28	0.268
64QAM	2595	38000	20	50	50	19.72	24.22	0.264
64QAM	2595	38000	20	100	0	19.79	24.29	0.269
64QAM	2610	38150	20	1	0	21.14	25.64	0.366
64QAM	2610	38150	20	1	49	21.37	25.87	0.386
64QAM	2610	38150	20	1	99	21.54	26.04	0.402
64QAM	2610	38150	20	50	0	19.91	24.41	0.276
64QAM	2610	38150	20	50	24	20.11	24.61	0.289
64QAM	2610	38150	20	50	50	20.28	24.78	0.301
64QAM	2610	38150	20	100	0	20.13	24.63	0.290