

Report No.: SEWM2206000070RG02

Rev.: 01

Page: 1 of 89

Appendix B.20

NR Band n66



Unless otherwise agreed in writing, this document is issued by the Company subject to its General Conditions of Service printed overleaf, available on request or accessible at <http://www.sgs.com/en/Terms-and-Conditions.aspx> and, for electronic format documents, subject to Terms and Conditions for Electronic Documents at <http://www.sgs.com/en/Terms-and-Conditions/Terms-e-Documents.aspx>. Attention is drawn to the limitation of liability, indemnification and jurisdiction issues defined therein. Any holder of this document is advised that information contained hereon reflects the Company's findings at the time of its intervention only and within the limits of Client's instructions, if any. The Company's sole responsibility is to its Client and this document does not exonerate parties to a transaction from exercising all their rights and obligations under the transaction documents. This document cannot be reproduced except in full, without prior written approval of the Company. Any unauthorized alteration, forgery or falsification of the content or appearance of this document is unlawful and offenders may be prosecuted to the fullest extent of the law. Unless otherwise stated the results shown in this test report refer only to the sample(s) tested and such sample(s) are retained for 30 days only.

Attention: To check the authenticity of testing /inspection report & certificate, please contact us at telephone: (86-755) 8307 1443, or email: CN.Doccheck@sgs.com

South of No. 6 Plant, No. 1, Runsheng Road, Suzhou Industrial Park, Suzhou Area, China (Jiangsu) Pilot Free Trade Zone 215000
中国·苏州·中国(江苏)自由贸易试验区苏州片区苏州工业园区润胜路1号的6号厂房南楼 邮编: 215000

t (86-512) 62992980 www.sgs.com.cn
t (86-512) 62992980 sgs.china@sgs.com

Effective (Isotropic) Radiated Power Output Data for SA

Test Result

Band	SCS	Bandwidth	Modulation	Channel	RB Config	Power (dBm)	EIRP (dBm)	LIMIT	Verdict
N66	15	5	DFT-PI2BPSK	L	Inner_1RB_Left	23.56	26.38	30	PASS
N66	15	5	DFT-PI2BPSK	L	Inner_1RB_Right	23.57	26.39	30	PASS
N66	15	5	DFT-PI2BPSK	L	Outer_Full	23.03	25.85	30	PASS
N66	15	5	DFT-QPSK	L	Inner_1RB_Left	23.4	26.22	30	PASS
N66	15	5	DFT-QPSK	L	Inner_1RB_Right	23.5	26.32	30	PASS
N66	15	5	DFT-QPSK	L	Outer_Full	22.53	25.35	30	PASS
N66	15	5	DFT-16QAM	L	Inner_1RB_Left	22.52	25.34	30	PASS
N66	15	5	DFT-16QAM	L	Inner_1RB_Right	22.61	25.43	30	PASS
N66	15	5	DFT-16QAM	L	Outer_Full	21.54	24.36	30	PASS
N66	15	5	DFT-64QAM	L	Inner_1RB_Left	21.2	24.02	30	PASS
N66	15	5	DFT-64QAM	L	Inner_1RB_Right	21.25	24.07	30	PASS
N66	15	5	DFT-64QAM	L	Outer_Full	21.07	23.89	30	PASS
N66	15	5	DFT-256QAM	L	Inner_1RB_Left	18.47	21.29	30	PASS
N66	15	5	DFT-256QAM	L	Inner_1RB_Right	18.5	21.32	30	PASS
N66	15	5	DFT-256QAM	L	Outer_Full	18.9	21.72	30	PASS
N66	15	5	DFT-PI2BPSK	M	Inner_1RB_Left	23.68	26.5	30	PASS
N66	15	5	DFT-PI2BPSK	M	Inner_1RB_Right	23.8	26.62	30	PASS
N66	15	5	DFT-PI2BPSK	M	Outer_Full	23.28	26.1	30	PASS
N66	15	5	DFT-QPSK	M	Inner_1RB_Left	23.65	26.47	30	PASS
N66	15	5	DFT-QPSK	M	Inner_1RB_Right	23.67	26.49	30	PASS
N66	15	5	DFT-QPSK	M	Outer_Full	22.72	25.54	30	PASS
N66	15	5	DFT-16QAM	M	Inner_1RB_Left	22.67	25.49	30	PASS
N66	15	5	DFT-16QAM	M	Inner_1RB_Right	22.76	25.58	30	PASS
N66	15	5	DFT-16QAM	M	Outer_Full	21.73	24.55	30	PASS
N66	15	5	DFT-64QAM	M	Inner_1RB_Left	21.32	24.14	30	PASS
N66	15	5	DFT-64QAM	M	Inner_1RB_Right	21.39	24.21	30	PASS
N66	15	5	DFT-64QAM	M	Outer_Full	21.21	24.03	30	PASS
N66	15	5	DFT-256QAM	M	Inner_1RB_Left	18.6	21.42	30	PASS
N66	15	5	DFT-256QAM	M	Inner_1RB_Right	18.7	21.52	30	PASS
N66	15	5	DFT-256QAM	M	Outer_Full	19.13	21.95	30	PASS
N66	15	5	DFT-PI2BPSK	H	Inner_1RB_Left	23.41	26.23	30	PASS
N66	15	5	DFT-PI2BPSK	H	Inner_1RB_Right	23.36	26.18	30	PASS



Unless otherwise agreed in writing, this document is issued by the Company subject to its General Conditions of Service printed overleaf, available on request or accessible at <http://www.sgs.com/en/Terms-and-Conditions.aspx> and, for electronic format documents, subject to Terms and Conditions for Electronic Documents at <http://www.sgs.com/en/Terms-and-Conditions.aspx>. Attention is drawn to the limitation of liability, indemnification and jurisdiction issues defined therein. Any holder of this document is advised that information contained hereon reflects the Company's findings at the time of its intervention only and within the limits of Client's instructions, if any. The Company's sole responsibility is to its Client and this document does not exonerate parties to a transaction from exercising all their rights and obligations under the transaction documents. This document cannot be reproduced except in full, without prior written approval of the Company. Any unauthorized alteration, forgery or falsification of the content or appearance of this document is unlawful and offenders may be prosecuted to the fullest extent of the law. Unless otherwise stated the results shown in this test report refer only to the sample(s) tested and such sample(s) are retained for 30 days only.

Attention: To check the authenticity of testing/inspection report & certificate, please contact us at telephone: (86-755) 8307 1443, or email: CN.Doccheck@sgs.com
 South of No. 6 Plant, No. 1, Runsheng Road, Suzhou Industrial Park, Suzhou Area, China (Jiangsu) Pilot Free Trade Zone 215000 t (86-512) 62992980 www.sgs.com.cn
 中国·苏州·中国(江苏)自由贸易试验区苏州片区苏州工业园区润胜路1号的6号厂房南楼 邮编: 215000 t (86-512) 62992980 sgs.china@sgs.com



N66	15	5	DFT-PI2BPSK	H	Outer_Full	22.87	25.69	30	PASS
N66	15	5	DFT-QPSK	H	Inner_1RB_Left	23.28	26.1	30	PASS
N66	15	5	DFT-QPSK	H	Inner_1RB_Right	23.32	26.14	30	PASS
N66	15	5	DFT-QPSK	H	Outer_Full	22.36	25.18	30	PASS
N66	15	5	DFT-16QAM	H	Inner_1RB_Left	22.36	25.18	30	PASS
N66	15	5	DFT-16QAM	H	Inner_1RB_Right	22.29	25.11	30	PASS
N66	15	5	DFT-16QAM	H	Outer_Full	21.41	24.23	30	PASS
N66	15	5	DFT-64QAM	H	Inner_1RB_Left	21.05	23.87	30	PASS
N66	15	5	DFT-64QAM	H	Inner_1RB_Right	20.98	23.8	30	PASS
N66	15	5	DFT-64QAM	H	Outer_Full	20.85	23.67	30	PASS
N66	15	5	DFT-256QAM	H	Inner_1RB_Left	18.28	21.1	30	PASS
N66	15	5	DFT-256QAM	H	Inner_1RB_Right	18.21	21.03	30	PASS
N66	15	5	DFT-256QAM	H	Outer_Full	18.78	21.6	30	PASS
N66	15	10	DFT-PI2BPSK	L	Inner_1RB_Left	23.51	26.33	30	PASS
N66	15	10	DFT-PI2BPSK	L	Inner_1RB_Right	23.53	26.35	30	PASS
N66	15	10	DFT-PI2BPSK	L	Outer_Full	22.95	25.77	30	PASS
N66	15	10	DFT-QPSK	L	Inner_1RB_Left	23.46	26.28	30	PASS
N66	15	10	DFT-QPSK	L	Inner_1RB_Right	23.47	26.29	30	PASS
N66	15	10	DFT-QPSK	L	Outer_Full	22.42	25.24	30	PASS
N66	15	10	DFT-16QAM	L	Inner_1RB_Left	22.53	25.35	30	PASS
N66	15	10	DFT-16QAM	L	Inner_1RB_Right	22.57	25.39	30	PASS
N66	15	10	DFT-16QAM	L	Outer_Full	21.4	24.22	30	PASS
N66	15	10	DFT-64QAM	L	Inner_1RB_Left	21.15	23.97	30	PASS
N66	15	10	DFT-64QAM	L	Inner_1RB_Right	21.19	24.01	30	PASS
N66	15	10	DFT-64QAM	L	Outer_Full	20.97	23.79	30	PASS
N66	15	10	DFT-256QAM	L	Inner_1RB_Left	18.44	21.26	30	PASS
N66	15	10	DFT-256QAM	L	Inner_1RB_Right	18.5	21.32	30	PASS
N66	15	10	DFT-256QAM	L	Outer_Full	18.86	21.68	30	PASS
N66	15	10	DFT-PI2BPSK	M	Inner_1RB_Left	23.67	26.49	30	PASS
N66	15	10	DFT-PI2BPSK	M	Inner_1RB_Right	23.77	26.59	30	PASS
N66	15	10	DFT-PI2BPSK	M	Outer_Full	23.22	26.04	30	PASS
N66	15	10	DFT-QPSK	M	Inner_1RB_Left	23.59	26.41	30	PASS
N66	15	10	DFT-QPSK	M	Inner_1RB_Right	23.72	26.54	30	PASS
N66	15	10	DFT-QPSK	M	Outer_Full	22.69	25.51	30	PASS
N66	15	10	DFT-16QAM	M	Inner_1RB_Left	22.71	25.53	30	PASS
N66	15	10	DFT-16QAM	M	Inner_1RB_Right	22.77	25.59	30	PASS
N66	15	10	DFT-16QAM	M	Outer_Full	21.65	24.47	30	PASS



Unless otherwise agreed in writing, this document is issued by the Company subject to its General Conditions of Service printed overleaf, available on request or accessible at <http://www.sgs.com/en/Terms-and-Conditions.aspx> and, for electronic format documents, subject to Terms and Conditions for Electronic Documents at <http://www.sgs.com/en/Terms-and-Conditions/Terms-e-Documents.aspx>. Attention is drawn to the limitation of liability, indemnification and jurisdiction issues defined therein. Any holder of this document is advised that information contained hereon reflects the Company's findings at the time of its intervention only and within the limits of Client's instructions, if any. The Company's sole responsibility is to its Client and this document does not exonerate parties to a transaction from exercising all their rights and obligations under the transaction documents. This document cannot be reproduced except in full, without prior written approval of the Company. Any unauthorized alteration, forgery or falsification of the content or appearance of this document is unlawful and offenders may be prosecuted to the fullest extent of the law. Unless otherwise stated the results shown in this test report refer only to the sample(s) tested and such sample(s) are retained for 30 days only.

Attention: To check the authenticity of testing/inspection report & certificate, please contact us at telephone: (86-755) 8307 1443, or email: CN.Doccheck@sgs.com
 South of No. 6 Plant, No. 1, Runsheng Road, Suzhou Industrial Park, Suzhou Area, China (Jiangsu) Pilot Free Trade Zone 215000 t (86-512) 62992980 www.sgs.com.cn
 中国·苏州·中国(江苏)自由贸易试验区苏州片区工业园区润胜路1号的6号厂房南楼 邮编: 215000 t (86-512) 62992980 sgs.china@sgs.com



Report No.: SEWM2206000070RG02

Rev.: 01

Page: 4 of 89

N66	15	10	DFT-64QAM	M	Inner_1RB_Left	21.33	24.15	30	PASS
N66	15	10	DFT-64QAM	M	Inner_1RB_Right	21.44	24.26	30	PASS
N66	15	10	DFT-64QAM	M	Outer_Full	21.24	24.06	30	PASS
N66	15	10	DFT-256QAM	M	Inner_1RB_Left	18.57	21.39	30	PASS
N66	15	10	DFT-256QAM	M	Inner_1RB_Right	18.6	21.42	30	PASS
N66	15	10	DFT-256QAM	M	Outer_Full	19.15	21.97	30	PASS
N66	15	10	DFT-PI2BPSK	H	Inner_1RB_Left	23.41	26.23	30	PASS
N66	15	10	DFT-PI2BPSK	H	Inner_1RB_Right	23.29	26.11	30	PASS
N66	15	10	DFT-PI2BPSK	H	Outer_Full	22.97	25.79	30	PASS
N66	15	10	DFT-QPSK	H	Inner_1RB_Left	23.32	26.14	30	PASS
N66	15	10	DFT-QPSK	H	Inner_1RB_Right	23.2	26.02	30	PASS
N66	15	10	DFT-QPSK	H	Outer_Full	22.35	25.17	30	PASS
N66	15	10	DFT-16QAM	H	Inner_1RB_Left	22.38	25.2	30	PASS
N66	15	10	DFT-16QAM	H	Inner_1RB_Right	22.34	25.16	30	PASS
N66	15	10	DFT-16QAM	H	Outer_Full	21.31	24.13	30	PASS
N66	15	10	DFT-64QAM	H	Inner_1RB_Left	21.14	23.96	30	PASS
N66	15	10	DFT-64QAM	H	Inner_1RB_Right	21.04	23.86	30	PASS
N66	15	10	DFT-64QAM	H	Outer_Full	20.92	23.74	30	PASS
N66	15	10	DFT-256QAM	H	Inner_1RB_Left	18.32	21.14	30	PASS
N66	15	10	DFT-256QAM	H	Inner_1RB_Right	18.25	21.07	30	PASS
N66	15	10	DFT-256QAM	H	Outer_Full	18.85	21.67	30	PASS
N66	15	15	DFT-PI2BPSK	L	Inner_1RB_Left	23.45	26.27	30	PASS
N66	15	15	DFT-PI2BPSK	L	Inner_1RB_Right	23.65	26.47	30	PASS
N66	15	15	DFT-PI2BPSK	L	Outer_Full	23.07	25.89	30	PASS
N66	15	15	DFT-QPSK	L	Inner_1RB_Left	23.39	26.21	30	PASS
N66	15	15	DFT-QPSK	L	Inner_1RB_Right	23.58	26.4	30	PASS
N66	15	15	DFT-QPSK	L	Outer_Full	22.54	25.36	30	PASS
N66	15	15	DFT-16QAM	L	Inner_1RB_Left	22.46	25.28	30	PASS
N66	15	15	DFT-16QAM	L	Inner_1RB_Right	22.67	25.49	30	PASS
N66	15	15	DFT-16QAM	L	Outer_Full	21.57	24.39	30	PASS
N66	15	15	DFT-64QAM	L	Inner_1RB_Left	21.16	23.98	30	PASS
N66	15	15	DFT-64QAM	L	Inner_1RB_Right	21.29	24.11	30	PASS
N66	15	15	DFT-64QAM	L	Outer_Full	21.03	23.85	30	PASS
N66	15	15	DFT-256QAM	L	Inner_1RB_Left	18.36	21.18	30	PASS
N66	15	15	DFT-256QAM	L	Inner_1RB_Right	18.6	21.42	30	PASS
N66	15	15	DFT-256QAM	L	Outer_Full	18.95	21.77	30	PASS
N66	15	15	DFT-PI2BPSK	M	Inner_1RB_Left	23.69	26.51	30	PASS



Unless otherwise agreed in writing, this document is issued by the Company subject to its General Conditions of Service printed overleaf, available on request or accessible at <http://www.sgs.com/en/Terms-and-Conditions.aspx> and, for electronic format documents, subject to Terms and Conditions for Electronic Documents at <http://www.sgs.com/en/Terms-and-Conditions/Terms-e-Documents.aspx>. Attention is drawn to the limitation of liability, indemnification and jurisdiction issues defined therein. Any holder of this document is advised that information contained hereon reflects the Company's findings at the time of its intervention only and within the limits of Client's instructions, if any. The Company's sole responsibility is to its Client and this document does not exonerate parties to a transaction from exercising all their rights and obligations under the transaction documents. This document cannot be reproduced except in full, without prior written approval of the Company. Any unauthorized alteration, forgery or falsification of the content or appearance of this document is unlawful and offenders may be prosecuted to the fullest extent of the law. Unless otherwise stated the results shown in this test report refer only to the sample(s) tested and such sample(s) are retained for 30 days only.

Attention: To check the authenticity of testing/inspection report & certificate, please contact us at telephone: (86-755) 8307 1443, or email: CN.Doccheck@sgs.com

South of No. 6 Plant, No. 1, Runsheng Road, Suzhou Industrial Park, Suzhou Area, China (Jiangsu) Pilot Free Trade Zone 215000
中国·苏州·中国(江苏)自由贸易试验区苏州片区工业园区润胜路1号的6号厂房南楼 邮编: 215000

t (86-512) 62992980 www.sgs.com.cn
t (86-512) 62992980 sgs.china@sgs.com



Report No.: SEWM2206000070RG02

Rev.: 01

Page: 5 of 89

N66	15	15	DFT-PI2BPSK	M	Inner_1RB_Right	23.92	26.74	30	PASS
N66	15	15	DFT-PI2BPSK	M	Outer_Full	23.28	26.1	30	PASS
N66	15	15	DFT-QPSK	M	Inner_1RB_Left	23.64	26.46	30	PASS
N66	15	15	DFT-QPSK	M	Inner_1RB_Right	23.84	26.66	30	PASS
N66	15	15	DFT-QPSK	M	Outer_Full	22.79	25.61	30	PASS
N66	15	15	DFT-16QAM	M	Inner_1RB_Left	22.69	25.51	30	PASS
N66	15	15	DFT-16QAM	M	Inner_1RB_Right	22.87	25.69	30	PASS
N66	15	15	DFT-16QAM	M	Outer_Full	21.79	24.61	30	PASS
N66	15	15	DFT-64QAM	M	Inner_1RB_Left	21.28	24.1	30	PASS
N66	15	15	DFT-64QAM	M	Inner_1RB_Right	21.58	24.4	30	PASS
N66	15	15	DFT-64QAM	M	Outer_Full	21.27	24.09	30	PASS
N66	15	15	DFT-256QAM	M	Inner_1RB_Left	18.59	21.41	30	PASS
N66	15	15	DFT-256QAM	M	Inner_1RB_Right	18.78	21.6	30	PASS
N66	15	15	DFT-256QAM	M	Outer_Full	19.21	22.03	30	PASS
N66	15	15	DFT-PI2BPSK	H	Inner_1RB_Left	23.62	26.44	30	PASS
N66	15	15	DFT-PI2BPSK	H	Inner_1RB_Right	23.57	26.39	30	PASS
N66	15	15	DFT-PI2BPSK	H	Outer_Full	23	25.82	30	PASS
N66	15	15	DFT-QPSK	H	Inner_1RB_Left	23.53	26.35	30	PASS
N66	15	15	DFT-QPSK	H	Inner_1RB_Right	23.47	26.29	30	PASS
N66	15	15	DFT-QPSK	H	Outer_Full	22.52	25.34	30	PASS
N66	15	15	DFT-16QAM	H	Inner_1RB_Left	22.59	25.41	30	PASS
N66	15	15	DFT-16QAM	H	Inner_1RB_Right	22.46	25.28	30	PASS
N66	15	15	DFT-16QAM	H	Outer_Full	21.53	24.35	30	PASS
N66	15	15	DFT-64QAM	H	Inner_1RB_Left	21.25	24.07	30	PASS
N66	15	15	DFT-64QAM	H	Inner_1RB_Right	21.23	24.05	30	PASS
N66	15	15	DFT-64QAM	H	Outer_Full	21	23.82	30	PASS
N66	15	15	DFT-256QAM	H	Inner_1RB_Left	18.57	21.39	30	PASS
N66	15	15	DFT-256QAM	H	Inner_1RB_Right	18.43	21.25	30	PASS
N66	15	15	DFT-256QAM	H	Outer_Full	18.95	21.77	30	PASS
N66	15	20	DFT-PI2BPSK	L	Inner_1RB_Left	23.53	26.35	30	PASS
N66	15	20	DFT-PI2BPSK	L	Inner_1RB_Right	23.62	26.44	30	PASS
N66	15	20	DFT-PI2BPSK	L	Outer_Full	23.07	25.89	30	PASS
N66	15	20	DFT-QPSK	L	Inner_1RB_Left	23.45	26.27	30	PASS
N66	15	20	DFT-QPSK	L	Inner_1RB_Right	23.59	26.41	30	PASS
N66	15	20	DFT-QPSK	L	Outer_Full	22.55	25.37	30	PASS
N66	15	20	DFT-16QAM	L	Inner_1RB_Left	22.5	25.32	30	PASS
N66	15	20	DFT-16QAM	L	Inner_1RB_Right	22.65	25.47	30	PASS



Unless otherwise agreed in writing, this document is issued by the Company subject to its General Conditions of Service printed overleaf, available on request or accessible at <http://www.sgs.com/en/Terms-and-Conditions.aspx> and, for electronic format documents, subject to Terms and Conditions for Electronic Documents at <http://www.sgs.com/en/Terms-and-Conditions/Terms-e-Documents.aspx>. Attention is drawn to the limitation of liability, indemnification and jurisdiction issues defined therein. Any holder of this document is advised that information contained hereon reflects the Company's findings at the time of its intervention only and within the limits of Client's instructions, if any. The Company's sole responsibility is to its Client and this document does not exonerate parties to a transaction from exercising all their rights and obligations under the transaction documents. This document cannot be reproduced except in full, without prior written approval of the Company. Any unauthorized alteration, forgery or falsification of the content or appearance of this document is unlawful and offenders may be prosecuted to the fullest extent of the law. Unless otherwise stated the results shown in this test report refer only to the sample(s) tested and such sample(s) are retained for 30 days only.

Attention: To check the authenticity of testing/inspection report & certificate, please contact us at telephone: (86-755) 8307 1443, or email: CN.Doccheck@sgs.com

South of No. 6 Plant, No. 1, Runsheng Road, Suzhou Industrial Park, Suzhou Area, China (Jiangsu) Pilot Free Trade Zone 215000
 中国·苏州·中国(江苏)自由贸易试验区苏州片区工业园区润胜路1号的6号厂房南楼 邮编: 215000

t (86-512) 62992980 www.sgs.com.cn
 t (86-512) 62992980 sgs.china@sgs.com

N66	15	20	DFT-16QAM	L	Outer_Full	21.5	24.32	30	PASS
N66	15	20	DFT-64QAM	L	Inner_1RB_Left	21.16	23.98	30	PASS
N66	15	20	DFT-64QAM	L	Inner_1RB_Right	21.32	24.14	30	PASS
N66	15	20	DFT-64QAM	L	Outer_Full	21.05	23.87	30	PASS
N66	15	20	DFT-256QAM	L	Inner_1RB_Left	18.39	21.21	30	PASS
N66	15	20	DFT-256QAM	L	Inner_1RB_Right	18.6	21.42	30	PASS
N66	15	20	DFT-256QAM	L	Outer_Full	19.05	21.87	30	PASS
N66	15	20	DFT-PI2BPSK	M	Inner_1RB_Left	23.61	26.43	30	PASS
N66	15	20	DFT-PI2BPSK	M	Inner_1RB_Right	23.92	26.74	30	PASS
N66	15	20	DFT-PI2BPSK	M	Outer_Full	23.24	26.06	30	PASS
N66	15	20	DFT-QPSK	M	Inner_1RB_Left	23.63	26.45	30	PASS
N66	15	20	DFT-QPSK	M	Inner_1RB_Right	23.79	26.61	30	PASS
N66	15	20	DFT-QPSK	M	Outer_Full	22.71	25.53	30	PASS
N66	15	20	DFT-16QAM	M	Inner_1RB_Left	22.66	25.48	30	PASS
N66	15	20	DFT-16QAM	M	Inner_1RB_Right	22.88	25.7	30	PASS
N66	15	20	DFT-16QAM	M	Outer_Full	21.72	24.54	30	PASS
N66	15	20	DFT-64QAM	M	Inner_1RB_Left	21.33	24.15	30	PASS
N66	15	20	DFT-64QAM	M	Inner_1RB_Right	21.49	24.31	30	PASS
N66	15	20	DFT-64QAM	M	Outer_Full	21.23	24.05	30	PASS
N66	15	20	DFT-256QAM	M	Inner_1RB_Left	18.52	21.34	30	PASS
N66	15	20	DFT-256QAM	M	Inner_1RB_Right	18.78	21.6	30	PASS
N66	15	20	DFT-256QAM	M	Outer_Full	19.26	22.08	30	PASS
N66	15	20	DFT-PI2BPSK	H	Inner_1RB_Left	23.71	26.53	30	PASS
N66	15	20	DFT-PI2BPSK	H	Inner_1RB_Right	23.51	26.33	30	PASS
N66	15	20	DFT-PI2BPSK	H	Outer_Full	23.09	25.91	30	PASS
N66	15	20	DFT-QPSK	H	Inner_1RB_Left	23.61	26.43	30	PASS
N66	15	20	DFT-QPSK	H	Inner_1RB_Right	23.44	26.26	30	PASS
N66	15	20	DFT-QPSK	H	Outer_Full	22.59	25.41	30	PASS
N66	15	20	DFT-16QAM	H	Inner_1RB_Left	22.71	25.53	30	PASS
N66	15	20	DFT-16QAM	H	Inner_1RB_Right	22.49	25.31	30	PASS
N66	15	20	DFT-16QAM	H	Outer_Full	21.6	24.42	30	PASS
N66	15	20	DFT-64QAM	H	Inner_1RB_Left	21.39	24.21	30	PASS
N66	15	20	DFT-64QAM	H	Inner_1RB_Right	21.21	24.03	30	PASS
N66	15	20	DFT-64QAM	H	Outer_Full	21.15	23.97	30	PASS
N66	15	20	DFT-256QAM	H	Inner_1RB_Left	18.61	21.43	30	PASS
N66	15	20	DFT-256QAM	H	Inner_1RB_Right	18.38	21.2	30	PASS
N66	15	20	DFT-256QAM	H	Outer_Full	19.14	21.96	30	PASS



Unless otherwise agreed in writing, this document is issued by the Company subject to its General Conditions of Service printed overleaf, available on request or accessible at <http://www.sgs.com/en/Terms-and-Conditions.aspx> and, for electronic format documents, subject to Terms and Conditions for Electronic Documents at <http://www.sgs.com/en/Terms-and-Conditions/Terms-e-Documents.aspx>. Attention is drawn to the limitation of liability, indemnification and jurisdiction issues defined therein. Any holder of this document is advised that information contained hereon reflects the Company's findings at the time of its intervention only and within the limits of Client's instructions, if any. The Company's sole responsibility is to its Client and this document does not exonerate parties to a transaction from exercising all their rights and obligations under the transaction documents. This document cannot be reproduced except in full, without prior written approval of the Company. Any unauthorized alteration, forgery or falsification of the content or appearance of this document is unlawful and offenders may be prosecuted to the fullest extent of the law. Unless otherwise stated the results shown in this test report refer only to the sample(s) tested and such sample(s) are retained for 30 days only.

Attention: To check the authenticity of testing/inspection report & certificate, please contact us at telephone: (86-755) 8307 1443, or email: CN.Doccheck@sgs.com
 South of No. 6 Plant, No. 1, Runsheng Road, Suzhou Industrial Park, Suzhou Area, China (Jiangsu) Pilot Free Trade Zone 215000 t (86-512) 62992980 www.sgs.com.cn
 中国·苏州·中国(江苏)自由贸易试验区苏州片区工业园区润胜路1号的6号厂房南楼 邮编: 215000 t (86-512) 62992980 sgs.china@sgs.com



N66	15	30	DFT-PI2BPSK	L	Inner_1RB_Left	23.55	26.37	30	PASS
N66	15	30	DFT-PI2BPSK	L	Inner_1RB_Right	23.89	26.71	30	PASS
N66	15	30	DFT-PI2BPSK	L	Outer_Full	23.21	26.03	30	PASS
N66	15	30	DFT-QPSK	L	Inner_1RB_Left	23.54	26.36	30	PASS
N66	15	30	DFT-QPSK	L	Inner_1RB_Right	23.7	26.52	30	PASS
N66	15	30	DFT-QPSK	L	Outer_Full	22.52	25.34	30	PASS
N66	15	30	DFT-16QAM	L	Inner_1RB_Left	21.36	24.18	30	PASS
N66	15	30	DFT-16QAM	L	Inner_1RB_Right	22.8	25.62	30	PASS
N66	15	30	DFT-16QAM	L	Outer_Full	21.65	24.47	30	PASS
N66	15	30	DFT-64QAM	L	Inner_1RB_Left	21.21	24.03	30	PASS
N66	15	30	DFT-64QAM	L	Inner_1RB_Right	21.5	24.32	30	PASS
N66	15	30	DFT-64QAM	L	Outer_Full	21.23	24.05	30	PASS
N66	15	30	DFT-256QAM	L	Inner_1RB_Left	18.55	21.37	30	PASS
N66	15	30	DFT-256QAM	L	Inner_1RB_Right	18.81	21.63	30	PASS
N66	15	30	DFT-256QAM	L	Outer_Full	19.16	21.98	30	PASS
N66	15	30	DFT-PI2BPSK	M	Inner_1RB_Left	23.68	26.5	30	PASS
N66	15	30	DFT-PI2BPSK	M	Inner_1RB_Right	23.77	26.59	30	PASS
N66	15	30	DFT-PI2BPSK	M	Outer_Full	23.26	26.08	30	PASS
N66	15	30	DFT-QPSK	M	Inner_1RB_Left	23.57	26.39	30	PASS
N66	15	30	DFT-QPSK	M	Inner_1RB_Right	23.73	26.55	30	PASS
N66	15	30	DFT-QPSK	M	Outer_Full	22.67	25.49	30	PASS
N66	15	30	DFT-16QAM	M	Inner_1RB_Left	22.69	25.51	30	PASS
N66	15	30	DFT-16QAM	M	Inner_1RB_Right	22.78	25.6	30	PASS
N66	15	30	DFT-16QAM	M	Outer_Full	21.7	24.52	30	PASS
N66	15	30	DFT-64QAM	M	Inner_1RB_Left	21.3	24.12	30	PASS
N66	15	30	DFT-64QAM	M	Inner_1RB_Right	21.49	24.31	30	PASS
N66	15	30	DFT-64QAM	M	Outer_Full	21.21	24.03	30	PASS
N66	15	30	DFT-256QAM	M	Inner_1RB_Left	18.62	21.44	30	PASS
N66	15	30	DFT-256QAM	M	Inner_1RB_Right	18.79	21.61	30	PASS
N66	15	30	DFT-256QAM	M	Outer_Full	19.25	22.07	30	PASS
N66	15	30	DFT-PI2BPSK	H	Inner_1RB_Left	23.73	26.55	30	PASS
N66	15	30	DFT-PI2BPSK	H	Inner_1RB_Right	23.43	26.25	30	PASS
N66	15	30	DFT-PI2BPSK	H	Outer_Full	23.23	26.05	30	PASS
N66	15	30	DFT-QPSK	H	Inner_1RB_Left	23.61	26.43	30	PASS
N66	15	30	DFT-QPSK	H	Inner_1RB_Right	23.4	26.22	30	PASS
N66	15	30	DFT-QPSK	H	Outer_Full	22.67	25.49	30	PASS
N66	15	30	DFT-16QAM	H	Inner_1RB_Left	22.69	25.51	30	PASS



Unless otherwise agreed in writing, this document is issued by the Company subject to its General Conditions of Service printed overleaf, available on request or accessible at <http://www.sgs.com/en/Terms-and-Conditions.aspx> and, for electronic format documents, subject to Terms and Conditions for Electronic Documents at <http://www.sgs.com/en/Terms-and-Conditions/Terms-e-Documents.aspx>. Attention is drawn to the limitation of liability, indemnification and jurisdiction issues defined therein. Any holder of this document is advised that information contained hereon reflects the Company's findings at the time of its intervention only and within the limits of Client's instructions, if any. The Company's sole responsibility is to its Client and this document does not exonerate parties to a transaction from exercising all their rights and obligations under the transaction documents. This document cannot be reproduced except in full, without prior written approval of the Company. Any unauthorized alteration, forgery or falsification of the content or appearance of this document is unlawful and offenders may be prosecuted to the fullest extent of the law. Unless otherwise stated the results shown in this test report refer only to the sample(s) tested and such sample(s) are retained for 30 days only.

Attention: To check the authenticity of testing/inspection report & certificate, please contact us at telephone: (86-755) 8307 1443, or email: CN.Doccheck@sgs.com
 South of No. 6 Plant, No. 1, Runsheng Road, Suzhou Industrial Park, Suzhou Area, China (Jiangsu) Pilot Free Trade Zone 215000 t (86-512) 62992980 www.sgs.com.cn
 中国·苏州·中国(江苏)自由贸易试验区苏州片区苏州工业园区润胜路1号的6号厂房南楼 邮编: 215000 t (86-512) 62992980 sgs.china@sgs.com



N66	15	30	DFT-16QAM	H	Inner_1RB_Right	22.49	25.31	30	PASS
N66	15	30	DFT-16QAM	H	Outer_Full	21.59	24.41	30	PASS
N66	15	30	DFT-64QAM	H	Inner_1RB_Left	21.42	24.24	30	PASS
N66	15	30	DFT-64QAM	H	Inner_1RB_Right	21.18	24	30	PASS
N66	15	30	DFT-64QAM	H	Outer_Full	21.06	23.88	30	PASS
N66	15	30	DFT-256QAM	H	Inner_1RB_Left	18.66	21.48	30	PASS
N66	15	30	DFT-256QAM	H	Inner_1RB_Right	18.49	21.31	30	PASS
N66	15	30	DFT-256QAM	H	Outer_Full	19.06	21.88	30	PASS
N66	15	40	DFT-PI2BPSK	L	Inner_1RB_Left	23.55	26.37	30	PASS
N66	15	40	DFT-PI2BPSK	L	Inner_1RB_Right	23.83	26.65	30	PASS
N66	15	40	DFT-PI2BPSK	L	Outer_Full	23.25	26.07	30	PASS
N66	15	40	DFT-QPSK	L	Inner_1RB_Left	23.54	26.36	30	PASS
N66	15	40	DFT-QPSK	L	Inner_1RB_Right	23.8	26.62	30	PASS
N66	15	40	DFT-QPSK	L	Outer_Full	22.8	25.62	30	PASS
N66	15	40	DFT-16QAM	L	Inner_1RB_Left	22.5	25.32	30	PASS
N66	15	40	DFT-16QAM	L	Inner_1RB_Right	22.84	25.66	30	PASS
N66	15	40	DFT-16QAM	L	Outer_Full	21.75	24.57	30	PASS
N66	15	40	DFT-64QAM	L	Inner_1RB_Left	21.14	23.96	30	PASS
N66	15	40	DFT-64QAM	L	Inner_1RB_Right	21.52	24.34	30	PASS
N66	15	40	DFT-64QAM	L	Outer_Full	21.26	24.08	30	PASS
N66	15	40	DFT-256QAM	L	Inner_1RB_Left	18.45	21.27	30	PASS
N66	15	40	DFT-256QAM	L	Inner_1RB_Right	18.89	21.71	30	PASS
N66	15	40	DFT-256QAM	L	Outer_Full	19.29	22.11	30	PASS
N66	15	40	DFT-PI2BPSK	M	Inner_1RB_Left	23.64	26.46	30	PASS
N66	15	40	DFT-PI2BPSK	M	Inner_1RB_Right	23.72	26.54	30	PASS
N66	15	40	DFT-PI2BPSK	M	Outer_Full	23.18	26	30	PASS
N66	15	40	DFT-QPSK	M	Inner_1RB_Left	23.56	26.38	30	PASS
N66	15	40	DFT-QPSK	M	Inner_1RB_Right	23.51	26.33	30	PASS
N66	15	40	DFT-QPSK	M	Outer_Full	22.66	25.48	30	PASS
N66	15	40	DFT-16QAM	M	Inner_1RB_Left	22.67	25.49	30	PASS
N66	15	40	DFT-16QAM	M	Inner_1RB_Right	22.6	25.42	30	PASS
N66	15	40	DFT-16QAM	M	Outer_Full	21.72	24.54	30	PASS
N66	15	40	DFT-64QAM	M	Inner_1RB_Left	21.27	24.09	30	PASS
N66	15	40	DFT-64QAM	M	Inner_1RB_Right	21.31	24.13	30	PASS
N66	15	40	DFT-64QAM	M	Outer_Full	21.25	24.07	30	PASS
N66	15	40	DFT-256QAM	M	Inner_1RB_Left	18.53	21.35	30	PASS
N66	15	40	DFT-256QAM	M	Inner_1RB_Right	18.66	21.48	30	PASS



Unless otherwise agreed in writing, this document is issued by the Company subject to its General Conditions of Service printed overleaf, available on request or accessible at <http://www.sgs.com/en/Terms-and-Conditions.aspx> and, for electronic format documents, subject to Terms and Conditions for Electronic Documents at <http://www.sgs.com/en/Terms-and-Conditions/Terms-e-Documents.aspx>. Attention is drawn to the limitation of liability, indemnification and jurisdiction issues defined therein. Any holder of this document is advised that information contained hereon reflects the Company's findings at the time of its intervention only and within the limits of Client's instructions, if any. The Company's sole responsibility is to its Client and this document does not exonerate parties to a transaction from exercising all their rights and obligations under the transaction documents. This document cannot be reproduced except in full, without prior written approval of the Company. Any unauthorized alteration, forgery or falsification of the content or appearance of this document is unlawful and offenders may be prosecuted to the fullest extent of the law. Unless otherwise stated the results shown in this test report refer only to the sample(s) tested and such sample(s) are retained for 30 days only.

Attention: To check the authenticity of testing/inspection report & certificate, please contact us at telephone: (86-755) 8307 1443, or email: CN.Doccheck@sgs.com

South of No. 6 Plant, No. 1, Runsheng Road, Suzhou Industrial Park, Suzhou Area, China (Jiangsu) Pilot Free Trade Zone 215000
中国·苏州·中国(江苏)自由贸易试验区苏州片区工业园区润胜路1号的6号厂房南楼 邮编: 215000

t (86-512) 62992980 www.sgs.com.cn
t (86-512) 62992980 sgs.china@sgs.com

Report No.: SEWM2206000070RG02

Rev.: 01

Page: 9 of 89

N66	15	40	DFT-256QAM	M	Outer_Full	19.25	22.07	30	PASS
N66	15	40	DFT-PI2BPSK	H	Inner_1RB_Left	23.73	26.55	30	PASS
N66	15	40	DFT-PI2BPSK	H	Inner_1RB_Right	23.49	26.31	30	PASS
N66	15	40	DFT-PI2BPSK	H	Outer_Full	23.18	26	30	PASS
N66	15	40	DFT-QPSK	H	Inner_1RB_Left	23.62	26.44	30	PASS
N66	15	40	DFT-QPSK	H	Inner_1RB_Right	23.41	26.23	30	PASS
N66	15	40	DFT-QPSK	H	Outer_Full	22.7	25.52	30	PASS
N66	15	40	DFT-16QAM	H	Inner_1RB_Left	22.73	25.55	30	PASS
N66	15	40	DFT-16QAM	H	Inner_1RB_Right	22.5	25.32	30	PASS
N66	15	40	DFT-16QAM	H	Outer_Full	21.74	24.56	30	PASS
N66	15	40	DFT-64QAM	H	Inner_1RB_Left	21.39	24.21	30	PASS
N66	15	40	DFT-64QAM	H	Inner_1RB_Right	21.18	24	30	PASS
N66	15	40	DFT-64QAM	H	Outer_Full	21.26	24.08	30	PASS
N66	15	40	DFT-256QAM	H	Inner_1RB_Left	18.59	21.41	30	PASS
N66	15	40	DFT-256QAM	H	Inner_1RB_Right	18.59	21.41	30	PASS
N66	15	40	DFT-256QAM	H	Outer_Full	19.23	22.05	30	PASS



Unless otherwise agreed in writing, this document is issued by the Company subject to its General Conditions of Service printed overleaf, available on request or accessible at <http://www.sgs.com/en/Terms-and-Conditions.aspx> and, for electronic format documents, subject to Terms and Conditions for Electronic Documents at <http://www.sgs.com/en/Terms-and-Conditions/Terms-e-Documents.aspx>. Attention is drawn to the limitation of liability, indemnification and jurisdiction issues defined therein. Any holder of this document is advised that information contained hereon reflects the Company's findings at the time of its intervention only and within the limits of Client's instructions, if any. The Company's sole responsibility is to its Client and this document does not exonerate parties to a transaction from exercising all their rights and obligations under the transaction documents. This document cannot be reproduced except in full, without prior written approval of the Company. Any unauthorized alteration, forgery or falsification of the content or appearance of this document is unlawful and offenders may be prosecuted to the fullest extent of the law. Unless otherwise stated the results shown in this test report refer only to the sample(s) tested and such sample(s) are retained for 30 days only.

Attention: To check the authenticity of testing/inspection report & certificate, please contact us at telephone: (86-755) 8307 1443, or email: CN.Doccheck@sgs.com

South of No. 6 Plant, No. 1, Runsheng Road, Suzhou Industrial Park, Suzhou Area, China (Jiangsu) Pilot Free Trade Zone 215000 t (86-512) 62992980 www.sgs.com.cn
 中国·苏州·中国(江苏)自由贸易试验区苏州片区工业园区润胜路1号的6号厂房南楼 邮编: 215000 t (86-512) 62992980 sgs.china@sgs.com

Peak-to-Average Ratio for SA

Peak-to-Average Ratio(PAPR)

Test Result

Band	SCS	Bandwidth	Modulation	Channel	RB Config	DutyCycle	Factor	Result	Limit	Verdict
N66	15	40	DFT-256QAM	L	Outer_Full	100%	0.00	9.03	≤13	PASS
N66	15	40	CP-256QAM	L	Outer_Full	100%	0.00	9.60	≤13	PASS
N66	15	40	DFT-256QAM	M	Outer_Full	100%	0.00	9.11	≤13	PASS
N66	15	40	CP-256QAM	M	Outer_Full	100%	0.00	9.39	≤13	PASS
N66	15	40	DFT-256QAM	H	Outer_Full	100%	0.00	9.06	≤13	PASS
N66	15	40	CP-256QAM	H	Outer_Full	100%	0.00	9.49	≤13	PASS

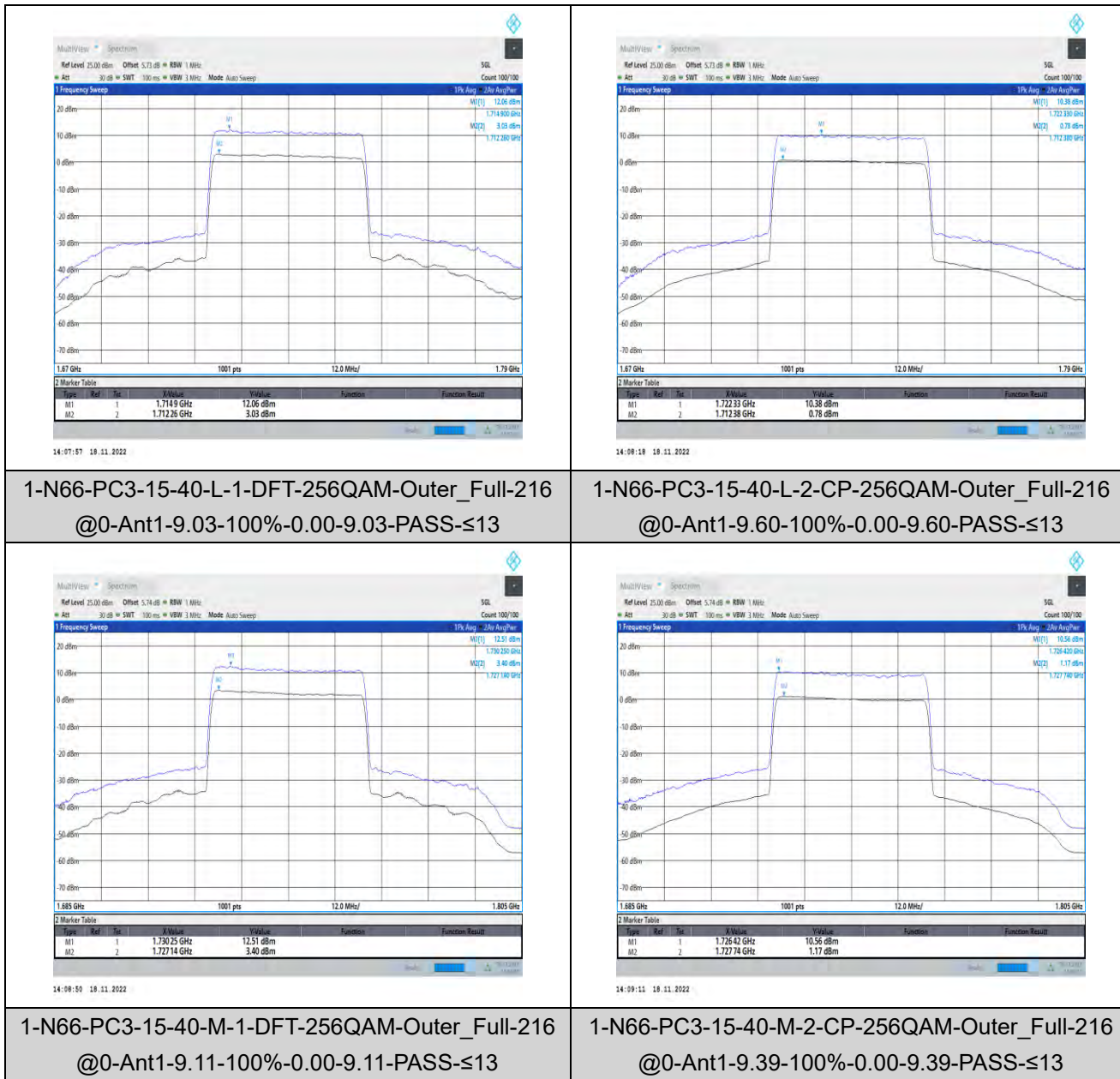


Unless otherwise agreed in writing, this document is issued by the Company subject to its General Conditions of Service printed overleaf, available on request or accessible at <http://www.sgs.com/en/Terms-and-Conditions.aspx> and, for electronic format documents, subject to Terms and Conditions for Electronic Documents at <http://www.sgs.com/en/Terms-and-Conditions/Terms-e-Documents.aspx>. Attention is drawn to the limitation of liability, indemnification and jurisdiction issues defined therein. Any holder of this document is advised that information contained hereon reflects the Company's findings at the time of its intervention only and within the limits of Client's instructions, if any. The Company's sole responsibility is to its Client and this document does not exonerate parties to a transaction from exercising all their rights and obligations under the transaction documents. This document cannot be reproduced except in full, without prior written approval of the Company. Any unauthorized alteration, forgery or falsification of the content or appearance of this document is unlawful and offenders may be prosecuted to the fullest extent of the law. Unless otherwise stated the results shown in this test report refer only to the sample(s) tested and such sample(s) are retained for 30 days only.

Attention: To check the authenticity of testing/inspection report & certificate, please contact us at telephone: (86-755) 8307 1443, or email: CN.Doccheck@sgs.com

South of No. 6 Plant, No. 1, Runsheng Road, Suzhou Industrial Park, Suzhou Area, China (Jiangsu) Pilot Free Trade Zone 215000 t (86-512) 62992980 www.sgs.com.cn
 中国·苏州·中国(江苏)自由贸易试验区苏州片区苏州工业园区润胜路1号的6号厂房南楼 邮编: 215000 t (86-512) 62992980 sgs.china@sgs.com

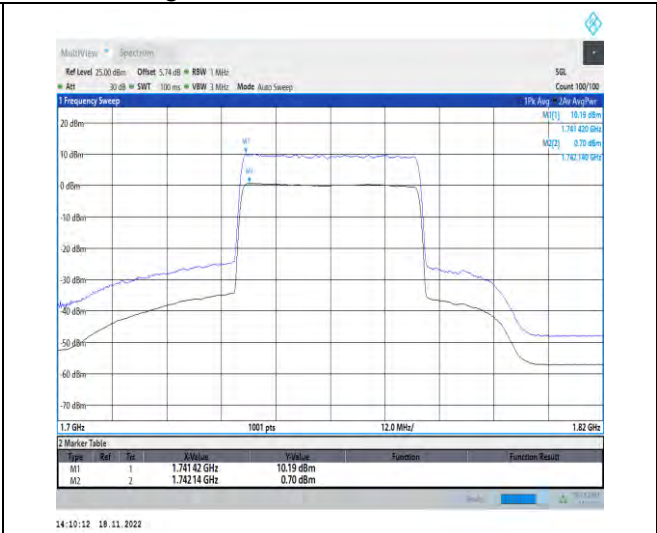
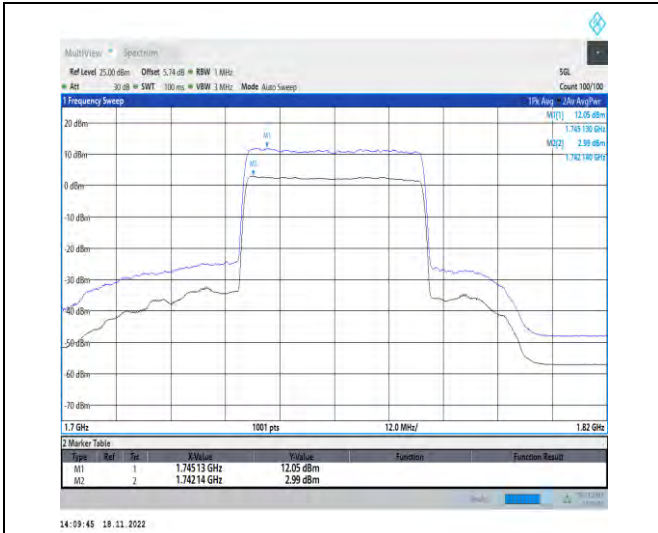
Test Graphs



Unless otherwise agreed in writing, this document is issued by the Company subject to its General Conditions of Service printed overleaf, available on request or accessible at <http://www.sgs.com/en/Terms-and-Conditions.aspx> and, for electronic format documents, subject to Terms and Conditions for Electronic Documents at <http://www.sgs.com/en/Terms-and-Conditions/Terms-e-Documents.aspx>. Attention is drawn to the limitation of liability, indemnification and jurisdiction issues defined therein. Any holder of this document is advised that information contained hereon reflects the Company's findings at the time of its intervention only and within the limits of Client's instructions, if any. The Company's sole responsibility is to its Client and this document does not exonerate parties to a transaction from exercising all their rights and obligations under the transaction documents. This document cannot be reproduced except in full, without prior written approval of the Company. Any unauthorized alteration, forgery or falsification of the content or appearance of this document is unlawful and offenders may be prosecuted to the fullest extent of the law. Unless otherwise stated the results shown in this test report refer only to the sample(s) tested and such sample(s) are retained for 30 days only.

Attention: To check the authenticity of testing/inspection report & certificate, please contact us at telephone: (86-755) 8307 1443, or email: CN.Doccheck@sgs.com

South of No. 6 Plant, No. 1, Runsheng Road, Suzhou Industrial Park, Suzhou Area, China (Jiangsu) Pilot Free Trade Zone 215000 t (86-512) 62992980 www.sgs.com.cn
 中国·苏州·中国(江苏)自由贸易试验区苏州片区苏州工业园区润胜路1号的6号厂房南楼 邮编: 215000 t (86-512) 62992980 sgs.china@sgs.com



1-N66-PC3-15-40-H-1-DFT-256QAM-Outer_Full-216
@0-Ant1-9.06-100%-0.00-9.06-PASS-≤13

1-N66-PC3-15-40-H-2-CP-256QAM-Outer_Full-216
@0-Ant1-9.49-100%-0.00-9.49-PASS-≤13



Unless otherwise agreed in writing, this document is issued by the Company subject to its General Conditions of Service printed overleaf, available on request or accessible at <http://www.sgs.com/en/Terms-and-Conditions.aspx> and, for electronic format documents, subject to Terms and Conditions for Electronic Documents at <http://www.sgs.com/en/Terms-and-Conditions/Terms-e-Document.aspx>. Attention is drawn to the limitation of liability, indemnification and jurisdiction issues defined therein. Any holder of this document is advised that information contained hereon reflects the Company's findings at the time of its intervention only and within the limits of Client's instructions, if any. The Company's sole responsibility is to its Client and this document does not exonerate parties to a transaction from exercising all their rights and obligations under the transaction documents. This document cannot be reproduced except in full, without prior written approval of the Company. Any unauthorized alteration, forgery or falsification of the content or appearance of this document is unlawful and offenders may be prosecuted to the fullest extent of the law. Unless otherwise stated the results shown in this test report refer only to the sample(s) tested and such sample(s) are retained for 30 days only.

Attention: To check the authenticity of testing/inspection report & certificate, please contact us at telephone: (86-755) 8307 1443, or email: CN.Doccheck@sgs.com
 South of No. 6 Plant, No. 1, Runsheng Road, Suzhou Industrial Park, Suzhou Area, China (Jiangsu) Pilot Free Trade Zone 215000 t (86-512) 62992980 www.sgs.com.cn
 中国·苏州·中国(江苏)自由贸易试验区苏州片区苏州工业园区润胜路1号的6号厂房南座 邮编: 215000 t (86-512) 62992980 sgs.china@sgs.com

Modulation characteristics for SA

Test Result

Band	SCS	Bandwidth	Modulation	Channel	RB Config	Result	Verdict
N66	15	40	DFT-PI2BPSK	M	Outer_Full	see graph	PASS
N66	15	40	DFT-QPSK	M	Outer_Full	see graph	PASS
N66	15	40	DFT-16QAM	M	Outer_Full	see graph	PASS
N66	15	40	DFT-64QAM	M	Outer_Full	see graph	PASS
N66	15	40	DFT-256QAM	M	Outer_Full	see graph	PASS
N66	15	40	CP-QPSK	M	Outer_Full	see graph	PASS
N66	15	40	CP-16QAM	M	Outer_Full	see graph	PASS
N66	15	40	CP-64QAM	M	Outer_Full	see graph	PASS
N66	15	40	CP-256QAM	M	Outer_Full	see graph	PASS



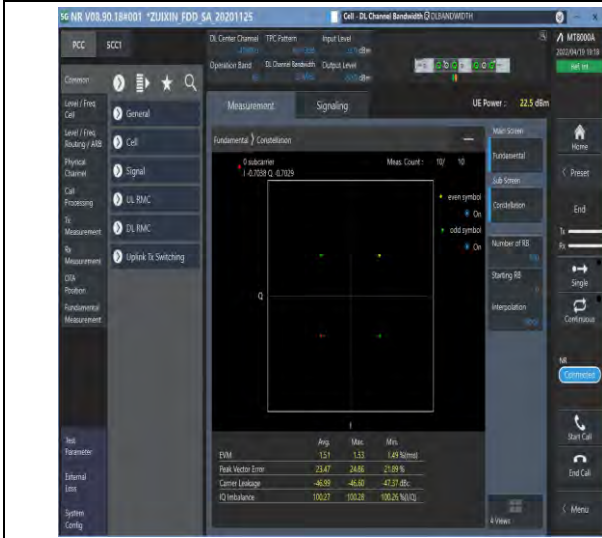
Unless otherwise agreed in writing, this document is issued by the Company subject to its General Conditions of Service printed overleaf, available on request or accessible at <http://www.sgs.com/en/Terms-and-Conditions.aspx> and, for electronic format documents, subject to Terms and Conditions for Electronic Documents at <http://www.sgs.com/en/Terms-and-Conditions/Terms-e-Documents.aspx>. Attention is drawn to the limitation of liability, indemnification and jurisdiction issues defined therein. Any holder of this document is advised that information contained hereon reflects the Company's findings at the time of its intervention only and within the limits of Client's instructions, if any. The Company's sole responsibility is to its Client and this document does not exonerate parties to a transaction from exercising all their rights and obligations under the transaction documents. This document cannot be reproduced except in full, without prior written approval of the Company. Any unauthorized alteration, forgery or falsification of the content or appearance of this document is unlawful and offenders may be prosecuted to the fullest extent of the law. Unless otherwise stated the results shown in this test report refer only to the sample(s) tested and such sample(s) are retained for 30 days only.

Attention: To check the authenticity of testing/inspection report & certificate, please contact us at telephone: (86-755) 8307 1443, or email: CN.Doccheck@sgs.com

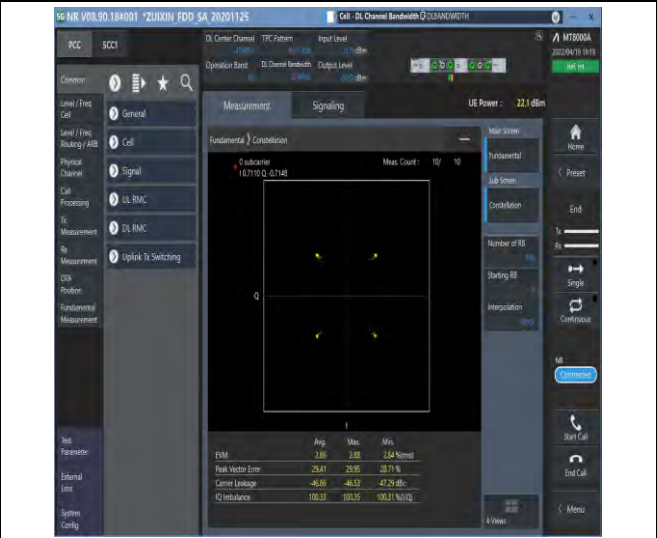
South of No. 6 Plant, No. 1, Runsheng Road, Suzhou Industrial Park, Suzhou Area, China (Jiangsu) Pilot Free Trade Zone 215000
 中国·苏州·中国(江苏)自由贸易试验区苏州片区苏州工业园区润胜路1号的6号厂房南楼 邮编: 215000

t (86-512) 62992980 www.sgs.com.cn
 t (86-512) 62992980 sgs.china@sgs.com

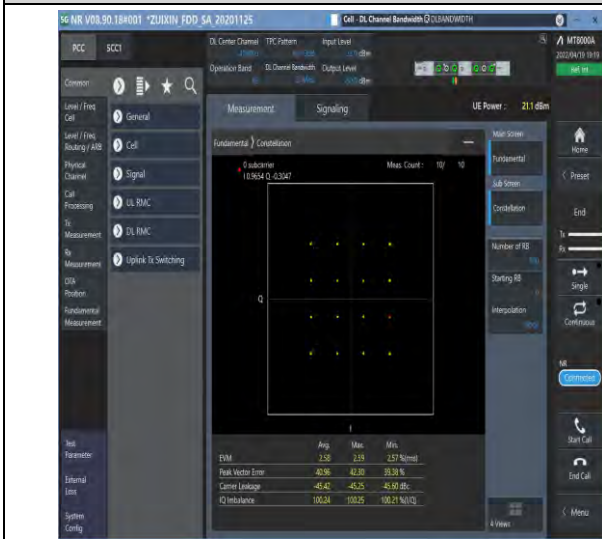
Test Graphs



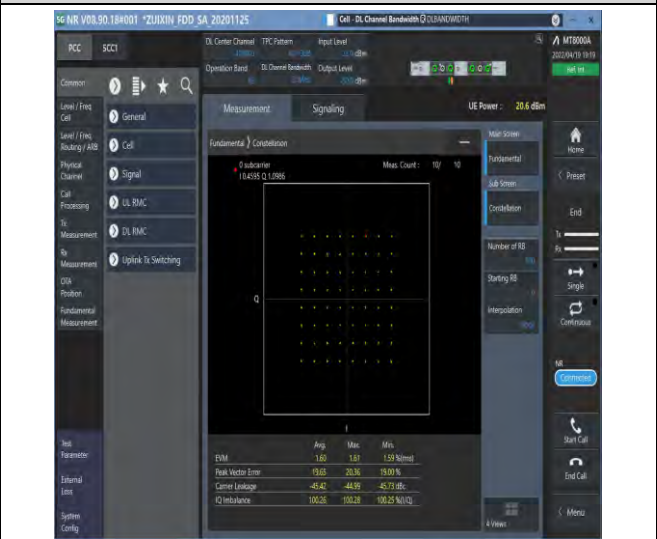
1-N66-PC3-15-20-M-1-DFT-PI2BPSK-Outer_Full-10
@0-Ant1-see graph-PASS



1-N66-PC3-15-20-M-2-DFT-QPSK-Outer_Full-100@
0-Ant1-see graph-PASS



1-N66-PC3-15-20-M-3-DFT-16QAM-Outer_Full-100
@0-Ant1-see graph-PASS



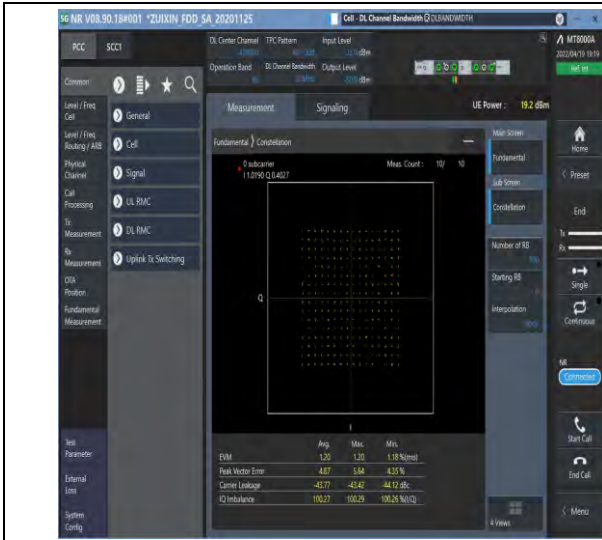
1-N66-PC3-15-20-M-4-DFT-64QAM-Outer_Full-100
@0-Ant1-see graph-PASS



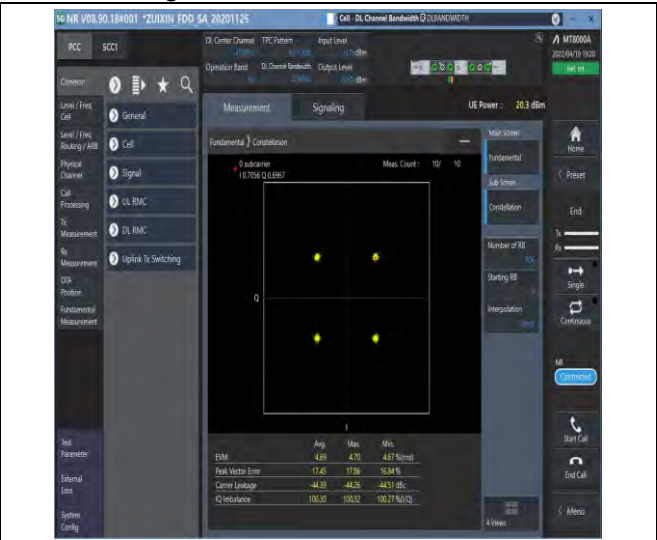
Unless otherwise agreed in writing, this document is issued by the Company subject to its General Conditions of Service printed overleaf, available on request or accessible at <http://www.sgs.com/en/Terms-and-Conditions.aspx> and, for electronic format documents, subject to Terms and Conditions for Electronic Documents at <http://www.sgs.com/en/Terms-and-Conditions/Terms-e-Documents.aspx>. Attention is drawn to the limitation of liability, indemnification and jurisdiction issues defined therein. Any holder of this document is advised that information contained hereon reflects the Company's findings at the time of its intervention only and within the limits of Client's instructions, if any. The Company's sole responsibility is to its Client and this document does not exonerate parties to a transaction from exercising all their rights and obligations under the transaction documents. This document cannot be reproduced except in full, without prior written approval of the Company. Any unauthorized alteration, forgery or falsification of the content or appearance of this document is unlawful and offenders may be prosecuted to the fullest extent of the law. Unless otherwise stated the results shown in this test report refer only to the sample(s) tested and such sample(s) are retained for 30 days only.

South of No. 6 Plant, No. 1, Runsheng Road, Suzhou Industrial Park, Suzhou Area, China (Jiangsu) Pilot Free Trade Zone 215000
中国·苏州·中国(江苏)自由贸易试验区苏州片区苏州工业园区润胜路1号的6号厂房南楼 邮编: 215000

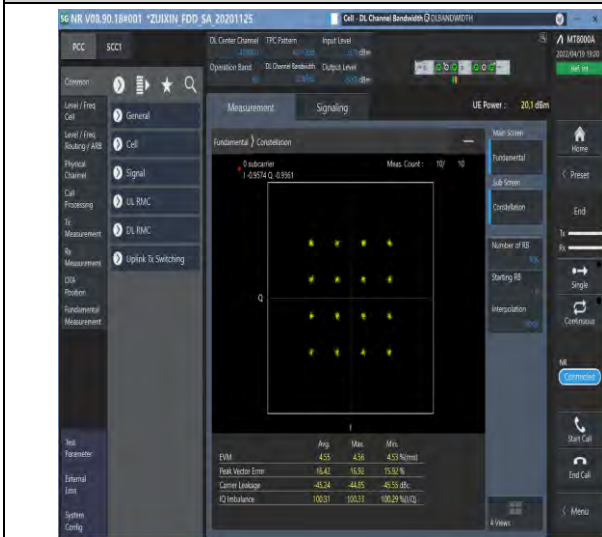
t (86-512) 62992980 www.sgs.com.cn
t (86-512) 62992980 sgs.china@sgs.com



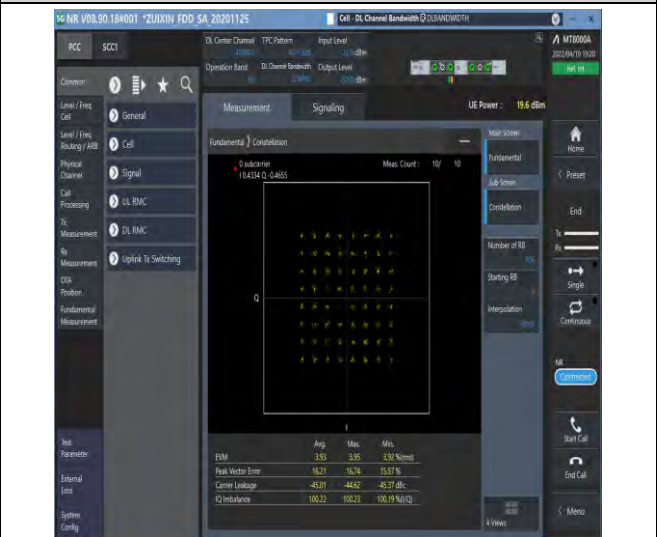
1-N66-PC3-15-20-M-5-DFT-256QAM-Outer_Full-100
@0-Ant1-see graph-PASS



1-N66-PC3-15-20-M-6-CP-QPSK-Outer_Full-106@0
-Ant1-see graph-PASS



1-N66-PC3-15-20-M-7-CP-16QAM-Outer_Full-106@0
0-Ant1-see graph-PASS

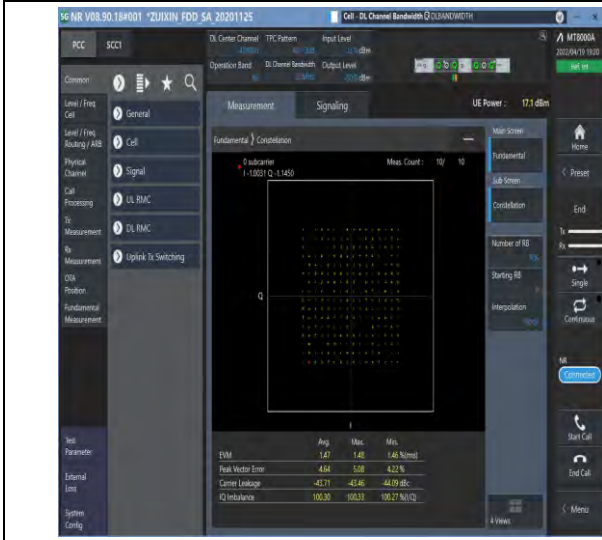


1-N66-PC3-15-20-M-8-CP-64QAM-Outer_Full-106@0
0-Ant1-see graph-PASS

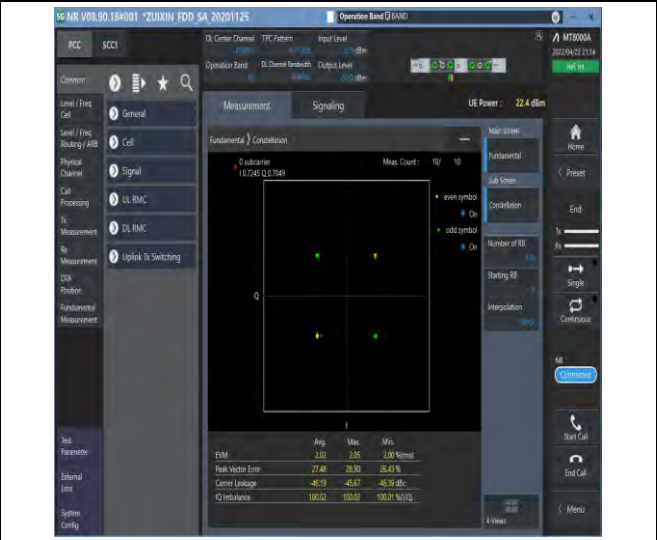


Unless otherwise agreed in writing, this document is issued by the Company subject to its General Conditions of Service printed overleaf, available on request or accessible at <http://www.sgs.com/en/Terms-and-Conditions.aspx> and, for electronic format documents, subject to Terms and Conditions for Electronic Documents at <http://www.sgs.com/en/Terms-and-Conditions/Terms-e-Documents.aspx>. Attention is drawn to the limitation of liability, indemnification and jurisdiction issues defined therein. Any holder of this document is advised that information contained hereon reflects the Company's findings at the time of its intervention only and within the limits of Client's instructions, if any. The Company's sole responsibility is to its Client and this document does not exonerate parties to a transaction from exercising all their rights and obligations under the transaction documents. This document cannot be reproduced except in full, without prior written approval of the Company. Any unauthorized alteration, forgery or falsification of the content or appearance of this document is unlawful and offenders may be prosecuted to the fullest extent of the law. Unless otherwise stated the results shown in this test report refer only to the sample(s) tested and such sample(s) are retained for 30 days only.

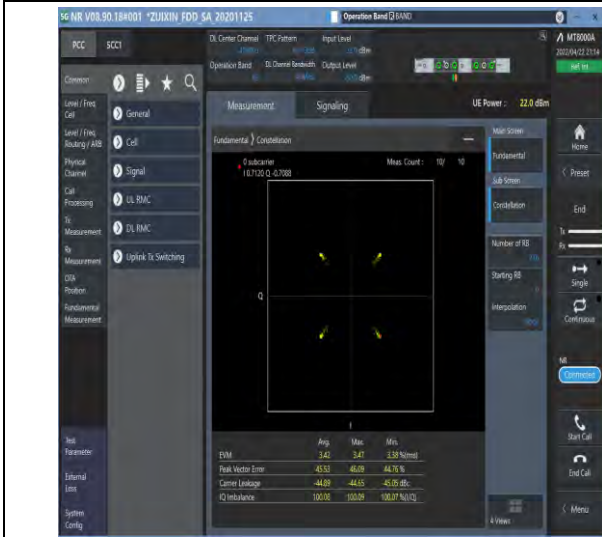
Attention: To check the authenticity of testing/inspection report & certificate, please contact us at telephone: (86-755) 8307 1443, or email: CN.Doccheck@sgs.com
 South of No. 6 Plant, No. 1, Runsheng Road, Suzhou Industrial Park, Suzhou Area, China (Jiangsu) Pilot Free Trade Zone 215000 t (86-512) 62992980 www.sgs.com.cn
 中国·苏州·中国(江苏)自由贸易试验区苏州片区苏州工业园区润胜路1号的6号厂房南楼 邮编: 215000 t (86-512) 62992980 sgs.china@sgs.com



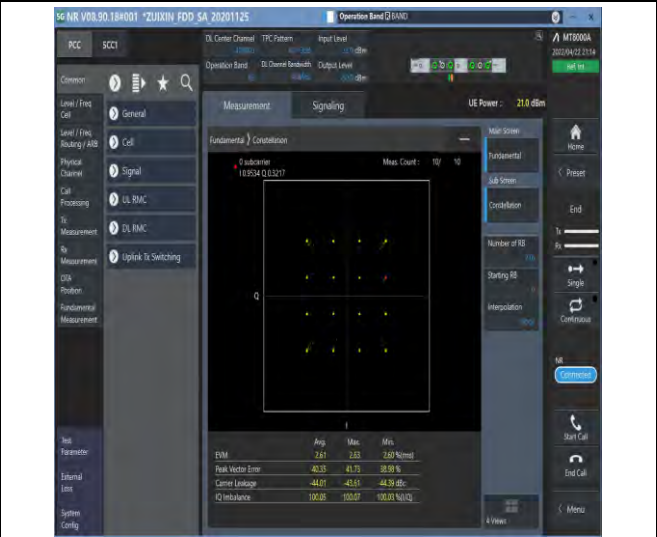
1-N66-PC3-15-20-M-9-CP-256QAM-Outer_Full-106 @0-Ant1-see graph-PASS



1-N66-PC3-15-40-M-1-DFT-PI2BPSK-Outer_Full-216 @0-Ant1-see graph-PASS



1-N66-PC3-15-40-M-2-DFT-QPSK-Outer_Full-216 @0-Ant1-see graph-PASS



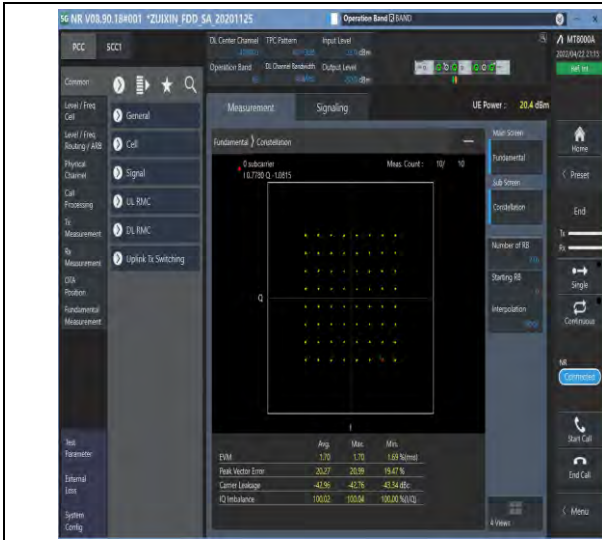
1-N66-PC3-15-40-M-3-DFT-16QAM-Outer_Full-216 @0-Ant1-see graph-PASS



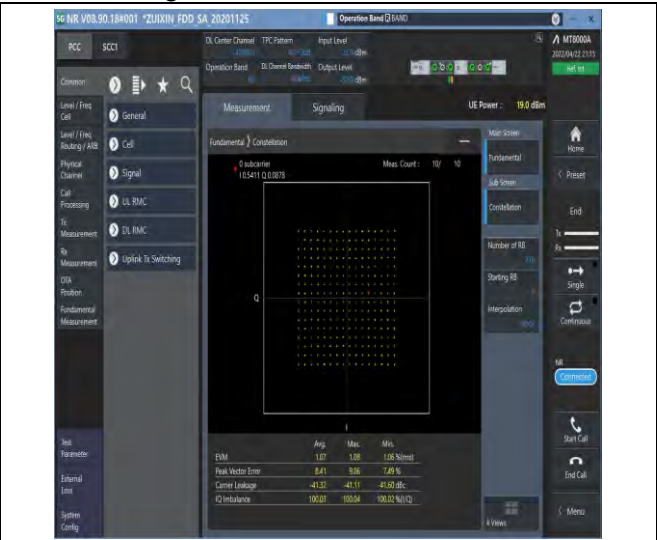
Unless otherwise agreed in writing, this document is issued by the Company subject to its General Conditions of Service printed overleaf, available on request or accessible at <http://www.sgs.com/en/Terms-and-Conditions.aspx> and, for electronic format documents, subject to Terms and Conditions for Electronic Documents at <http://www.sgs.com/en/Terms-and-Conditions/Terms-e-Documents.aspx>. Attention is drawn to the limitation of liability, indemnification and jurisdiction issues defined therein. Any holder of this document is advised that information contained hereon reflects the Company's findings at the time of its intervention only and within the limits of Client's instructions, if any. The Company's sole responsibility is to its Client and this document does not exonerate parties to a transaction from exercising all their rights and obligations under the transaction documents. This document cannot be reproduced except in full, without prior written approval of the Company. Any unauthorized alteration, forgery or falsification of the content or appearance of this document is unlawful and offenders may be prosecuted to the fullest extent of the law. Unless otherwise stated the results shown in this test report refer only to the sample(s) tested and such sample(s) are retained for 30 days only.

South of No. 6 Plant, No. 1, Runsheng Road, Suzhou Industrial Park, Suzhou Area, China (Jiangsu) Pilot Free Trade Zone 215000
 中国·苏州·中国(江苏)自由贸易试验区苏州片区工业园区润胜路1号的6号厂房南楼 邮编: 215000

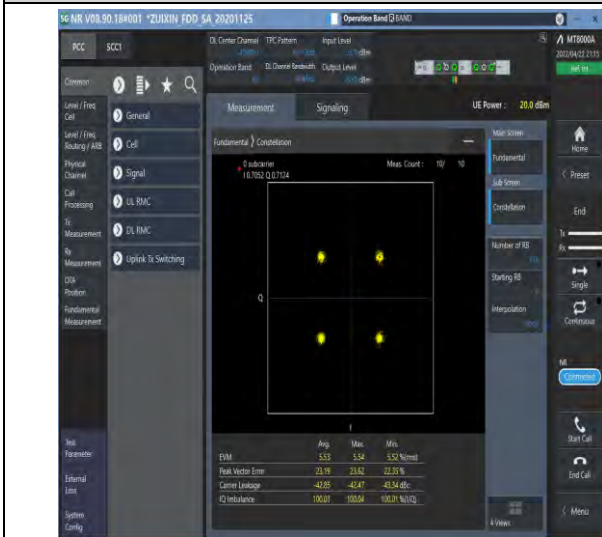
t (86-512) 62992980 www.sgs.com.cn
 t (86-512) 62992980 sgs.china@sgs.com



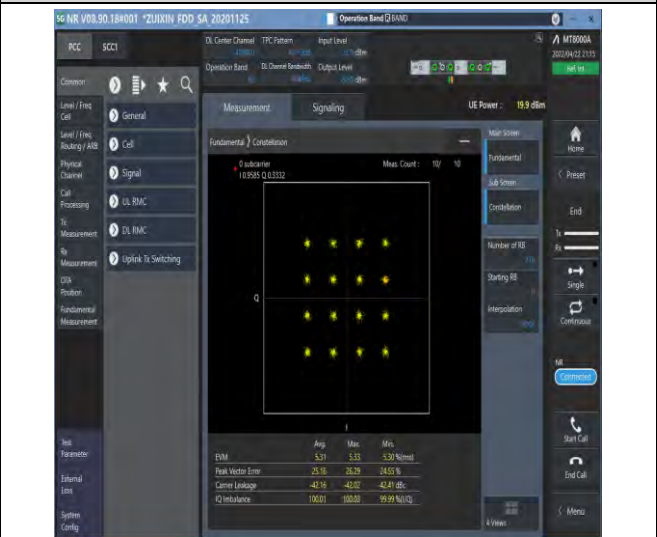
1-N66-PC3-15-40-M-4-DFT-64QAM-Outer_Full-216 @0-Ant1-see graph-PASS



1-N66-PC3-15-40-M-5-DFT-256QAM-Outer_Full-216 @0-Ant1-see graph-PASS



1-N66-PC3-15-40-M-6-CP-QPSK-Outer_Full-216@0 -Ant1-see graph-PASS



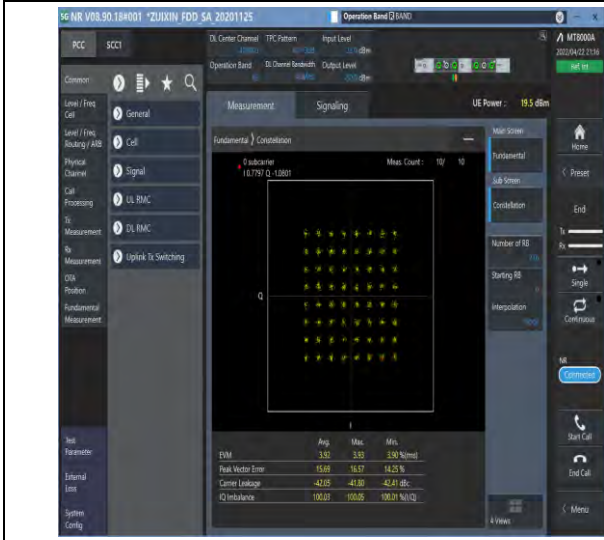
1-N66-PC3-15-40-M-7-CP-16QAM-Outer_Full-216@ 0-Ant1-see graph-PASS



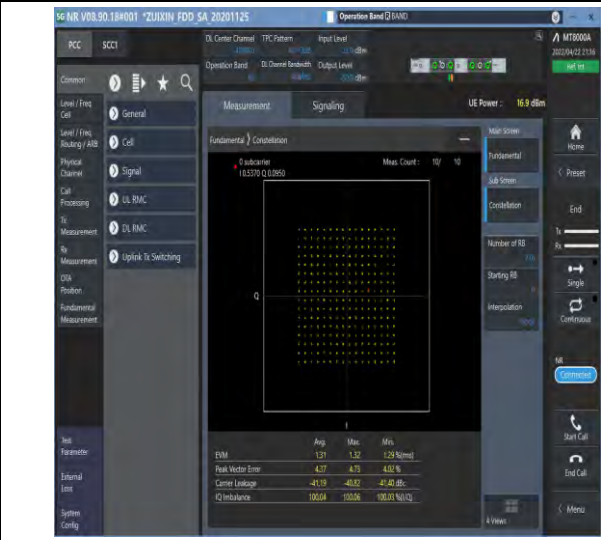
Unless otherwise agreed in writing, this document is issued by the Company subject to its General Conditions of Service printed overleaf, available on request or accessible at <http://www.sgs.com/en/Terms-and-Conditions.aspx> and, for electronic format documents, subject to Terms and Conditions for Electronic Documents at <http://www.sgs.com/en/Terms-and-Conditions/Terms-e-Documents.aspx>. Attention is drawn to the limitation of liability, indemnification and jurisdiction issues defined therein. Any holder of this document is advised that information contained hereon reflects the Company's findings at the time of its intervention only and within the limits of Client's instructions, if any. The Company's sole responsibility is to its Client and this document does not exonerate parties to a transaction from exercising all their rights and obligations under the transaction documents. This document cannot be reproduced except in full, without prior written approval of the Company. Any unauthorized alteration, forgery or falsification of the content or appearance of this document is unlawful and offenders may be prosecuted to the fullest extent of the law. Unless otherwise stated the results shown in this test report refer only to the sample(s) tested and such sample(s) are retained for 30 days only.

South of No. 6 Plant, No. 1, Runsheng Road, Suzhou Industrial Park, Suzhou Area, China (Jiangsu) Pilot Free Trade Zone 215000
 中国·苏州·中国(江苏)自由贸易试验区苏州片区工业园区润胜路1号的6号厂房南楼 邮编: 215000

t (86-512) 62992980 www.sgs.com.cn
 t (86-512) 62992980 sgs.china@sgs.com



1-N66-PC3-15-40-M-8-CP-64QAM-Outer_Full-216@
0-Ant1-see graph-PASS



1-N66-PC3-15-40-M-9-CP-256QAM-Outer_Full-216
@0-Ant1-see graph-PASS



Unless otherwise agreed in writing, this document is issued by the Company subject to its General Conditions of Service printed overleaf, available on request or accessible at <http://www.sgs.com/en/Terms-and-Conditions.aspx> and, for electronic format documents, subject to Terms and Conditions for Electronic Documents at <http://www.sgs.com/en/Terms-and-Conditions/Terms-e-Documents.aspx>. Attention is drawn to the limitation of liability, indemnification and jurisdiction issues defined therein. Any holder of this document is advised that information contained hereon reflects the Company's findings at the time of its intervention only and within the limits of Client's instructions, if any. The Company's sole responsibility is to its Client and this document does not exonerate parties to a transaction from exercising all their rights and obligations under the transaction documents. This document cannot be reproduced except in full, without prior written approval of the Company. Any unauthorized alteration, forgery or falsification of the content or appearance of this document is unlawful and offenders may be prosecuted to the fullest extent of the law. Unless otherwise stated the results shown in this test report refer only to the sample(s) tested and such sample(s) are retained for 30 days only.

Attention: To check the authenticity of testing/inspection report & certificate, please contact us at telephone: (86-755) 8307 1443, or email: CN.Doccheck@sgs.com

South of No. 6 Plant, No. 1, Runsheng Road, Suzhou Industrial Park, Suzhou Area, China (Jiangsu) Pilot Free Trade Zone 215000 t (86-512) 62992980 www.sgs.com.cn
中国·苏州·中国(江苏)自由贸易试验区苏州片区苏州工业园区润胜路1号的6号厂房南楼 邮编: 215000 t (86-512) 62992980 sgs.china@sgs.com

26dB Bandwidth and Occupied Bandwidth for SA

Test Result

Band	SCS	Bandwidth	Modulation	Channel	RB Config	Result (99%)	Result (26dB)	Verdict
N66	15	5	DFT-QPSK	L	Outer_Full	4.487	4.990	PASS
N66	15	5	DFT-PI2BPSK	L	Outer_Full	4.47	5.000	PASS
N66	15	5	DFT-16QAM	L	Outer_Full	4.492	5.170	PASS
N66	15	5	DFT-64QAM	L	Outer_Full	4.479	4.930	PASS
N66	15	5	DFT-256QAM	L	Outer_Full	4.487	5.060	PASS
N66	15	5	CP-QPSK	L	Outer_Full	4.488	5.110	PASS
N66	15	5	CP-16QAM	L	Outer_Full	4.483	5.050	PASS
N66	15	5	CP-64QAM	L	Outer_Full	4.481	5.040	PASS
N66	15	5	CP-256QAM	L	Outer_Full	4.476	5.220	PASS
N66	15	5	DFT-QPSK	M	Outer_Full	4.472	4.940	PASS
N66	15	5	DFT-PI2BPSK	M	Outer_Full	4.488	4.990	PASS
N66	15	5	DFT-16QAM	M	Outer_Full	4.474	5.050	PASS
N66	15	5	DFT-64QAM	M	Outer_Full	4.479	5.000	PASS
N66	15	5	DFT-256QAM	M	Outer_Full	4.487	5.130	PASS
N66	15	5	CP-QPSK	M	Outer_Full	4.474	5.050	PASS
N66	15	5	CP-16QAM	M	Outer_Full	4.49	5.040	PASS
N66	15	5	CP-64QAM	M	Outer_Full	4.481	5.130	PASS
N66	15	5	CP-256QAM	M	Outer_Full	4.492	5.010	PASS
N66	15	5	DFT-QPSK	H	Outer_Full	4.484	4.930	PASS
N66	15	5	DFT-PI2BPSK	H	Outer_Full	4.48	5.020	PASS
N66	15	5	DFT-16QAM	H	Outer_Full	4.488	5.120	PASS
N66	15	5	DFT-64QAM	H	Outer_Full	4.489	4.900	PASS
N66	15	5	DFT-256QAM	H	Outer_Full	4.48	5.040	PASS
N66	15	5	CP-QPSK	H	Outer_Full	4.483	5.140	PASS
N66	15	5	CP-16QAM	H	Outer_Full	4.485	5.070	PASS
N66	15	5	CP-64QAM	H	Outer_Full	4.486	5.090	PASS
N66	15	5	CP-256QAM	H	Outer_Full	4.488	5.170	PASS
N66	15	10	DFT-QPSK	L	Outer_Full	8.934	9.640	PASS
N66	15	10	DFT-PI2BPSK	L	Outer_Full	8.92	9.620	PASS
N66	15	10	DFT-16QAM	L	Outer_Full	8.93	9.740	PASS
N66	15	10	DFT-64QAM	L	Outer_Full	8.951	9.540	PASS
N66	15	10	DFT-256QAM	L	Outer_Full	8.94	9.680	PASS



Unless otherwise agreed in writing, this document is issued by the Company subject to its General Conditions of Service printed overleaf, available on request or accessible at <http://www.sgs.com/en/Terms-and-Conditions.aspx> and, for electronic format documents, subject to Terms and Conditions for Electronic Documents at <http://www.sgs.com/en/Terms-and-Conditions/Terms-e-Documents.aspx>. Attention is drawn to the limitation of liability, indemnification and jurisdiction issues defined therein. Any holder of this document is advised that information contained hereon reflects the Company's findings at the time of its intervention only and within the limits of Client's instructions, if any. The Company's sole responsibility is to its Client and this document does not exonerate parties to a transaction from exercising all their rights and obligations under the transaction documents. This document cannot be reproduced except in full, without prior written approval of the Company. Any unauthorized alteration, forgery or falsification of the content or appearance of this document is unlawful and offenders may be prosecuted to the fullest extent of the law. Unless otherwise stated the results shown in this test report refer only to the sample(s) tested and such sample(s) are retained for 30 days only.

Attention: To check the authenticity of testing/inspection report & certificate, please contact us at telephone: (86-755) 8307 1443, or email: CN.Doccheck@sgs.com
 South of No. 6 Plant, No. 1, Runsheng Road, Suzhou Industrial Park, Suzhou Area, China (Jiangsu) Pilot Free Trade Zone 215000 t (86-512) 62992980 www.sgs.com.cn
 中国·苏州·中国(江苏)自由贸易试验区苏州片区苏州工业园区润胜路1号的6号厂房南楼 邮编: 215000 t (86-512) 62992980 sgs.china@sgs.com



Report No.: SEWM2206000070RG02

Rev.: 01

Page: 20 of 89

N66	15	10	CP-QPSK	L	Outer_Full	9.278	10.200	PASS
N66	15	10	CP-16QAM	L	Outer_Full	9.289	10.000	PASS
N66	15	10	CP-64QAM	L	Outer_Full	9.293	9.920	PASS
N66	15	10	CP-256QAM	L	Outer_Full	9.276	9.880	PASS
N66	15	10	DFT-QPSK	M	Outer_Full	8.951	9.620	PASS
N66	15	10	DFT-PI2BPSK	M	Outer_Full	8.929	9.600	PASS
N66	15	10	DFT-16QAM	M	Outer_Full	8.953	9.760	PASS
N66	15	10	DFT-64QAM	M	Outer_Full	8.957	9.640	PASS
N66	15	10	DFT-256QAM	M	Outer_Full	8.93	9.600	PASS
N66	15	10	CP-QPSK	M	Outer_Full	9.297	10.100	PASS
N66	15	10	CP-16QAM	M	Outer_Full	9.298	9.960	PASS
N66	15	10	CP-64QAM	M	Outer_Full	9.283	10.040	PASS
N66	15	10	CP-256QAM	M	Outer_Full	9.304	10.120	PASS
N66	15	10	DFT-QPSK	H	Outer_Full	8.927	9.680	PASS
N66	15	10	DFT-PI2BPSK	H	Outer_Full	8.913	9.660	PASS
N66	15	10	DFT-16QAM	H	Outer_Full	8.963	9.860	PASS
N66	15	10	DFT-64QAM	H	Outer_Full	8.955	9.600	PASS
N66	15	10	DFT-256QAM	H	Outer_Full	8.947	9.580	PASS
N66	15	10	CP-QPSK	H	Outer_Full	9.29	10.140	PASS
N66	15	10	CP-16QAM	H	Outer_Full	9.298	10.080	PASS
N66	15	10	CP-64QAM	H	Outer_Full	9.291	9.960	PASS
N66	15	10	CP-256QAM	H	Outer_Full	9.296	10.100	PASS
N66	15	15	DFT-QPSK	L	Outer_Full	13.449	14.160	PASS
N66	15	15	DFT-PI2BPSK	L	Outer_Full	13.432	14.250	PASS
N66	15	15	DFT-16QAM	L	Outer_Full	13.476	14.370	PASS
N66	15	15	DFT-64QAM	L	Outer_Full	13.455	14.370	PASS
N66	15	15	DFT-256QAM	L	Outer_Full	13.458	14.280	PASS
N66	15	15	CP-QPSK	L	Outer_Full	14.109	15.090	PASS
N66	15	15	CP-16QAM	L	Outer_Full	14.11	15.180	PASS
N66	15	15	CP-64QAM	L	Outer_Full	14.151	15.000	PASS
N66	15	15	CP-256QAM	L	Outer_Full	14.102	15.030	PASS
N66	15	15	DFT-QPSK	M	Outer_Full	13.443	14.340	PASS
N66	15	15	DFT-PI2BPSK	M	Outer_Full	13.439	14.460	PASS
N66	15	15	DFT-16QAM	M	Outer_Full	13.42	14.340	PASS
N66	15	15	DFT-64QAM	M	Outer_Full	13.443	14.280	PASS
N66	15	15	DFT-256QAM	M	Outer_Full	13.44	14.370	PASS
N66	15	15	CP-QPSK	M	Outer_Full	14.13	15.120	PASS



Unless otherwise agreed in writing, this document is issued by the Company subject to its General Conditions of Service printed overleaf, available on request or accessible at <http://www.sgs.com/en/Terms-and-Conditions.aspx> and, for electronic format documents, subject to Terms and Conditions for Electronic Documents at <http://www.sgs.com/en/Terms-and-Conditions/Terms-e-Documents.aspx>. Attention is drawn to the limitation of liability, indemnification and jurisdiction issues defined therein. Any holder of this document is advised that information contained hereon reflects the Company's findings at the time of its intervention only and within the limits of Client's instructions, if any. The Company's sole responsibility is to its Client and this document does not exonerate parties to a transaction from exercising all their rights and obligations under the transaction documents. This document cannot be reproduced except in full, without prior written approval of the Company. Any unauthorized alteration, forgery or falsification of the content or appearance of this document is unlawful and offenders may be prosecuted to the fullest extent of the law. Unless otherwise stated the results shown in this test report refer only to the sample(s) tested and such sample(s) are retained for 30 days only.

Attention: To check the authenticity of testing/inspection report & certificate, please contact us at telephone: (86-755) 8307 1443, or email: CN.Doccheck@sgs.com
 South of No. 6 Plant, No. 1, Runsheng Road, Suzhou Industrial Park, Suzhou Area, China (Jiangsu) Pkx Free Trade Zone 215000 t (86-512) 62992980 www.sgs.com.cn
 中国·苏州·中国(江苏)自由贸易试验区苏州片区苏州工业园区润胜路1号的6号厂房南楼 邮编: 215000 t (86-512) 62992980 sgs.china@sgs.com



Report No.: SEWM2206000070RG02

Rev.: 01

Page: 21 of 89

N66	15	15	CP-16QAM	M	Outer_Full	14.115	14.880	PASS
N66	15	15	CP-64QAM	M	Outer_Full	14.171	15.090	PASS
N66	15	15	CP-256QAM	M	Outer_Full	14.145	15.210	PASS
N66	15	15	DFT-QPSK	H	Outer_Full	13.437	14.430	PASS
N66	15	15	DFT-PI2BPSK	H	Outer_Full	13.455	14.340	PASS
N66	15	15	DFT-16QAM	H	Outer_Full	13.461	14.280	PASS
N66	15	15	DFT-64QAM	H	Outer_Full	13.437	14.280	PASS
N66	15	15	DFT-256QAM	H	Outer_Full	13.474	14.430	PASS
N66	15	15	CP-QPSK	H	Outer_Full	14.145	15.060	PASS
N66	15	15	CP-16QAM	H	Outer_Full	14.115	14.940	PASS
N66	15	15	CP-64QAM	H	Outer_Full	14.139	15.060	PASS
N66	15	15	CP-256QAM	H	Outer_Full	14.133	15.030	PASS
N66	15	20	DFT-QPSK	L	Outer_Full	17.874	18.800	PASS
N66	15	20	DFT-PI2BPSK	L	Outer_Full	17.91	18.920	PASS
N66	15	20	DFT-16QAM	L	Outer_Full	17.897	18.920	PASS
N66	15	20	DFT-64QAM	L	Outer_Full	17.915	18.720	PASS
N66	15	20	DFT-256QAM	L	Outer_Full	17.892	18.720	PASS
N66	15	20	CP-QPSK	L	Outer_Full	18.954	19.960	PASS
N66	15	20	CP-16QAM	L	Outer_Full	18.969	20.040	PASS
N66	15	20	CP-64QAM	L	Outer_Full	18.934	19.840	PASS
N66	15	20	CP-256QAM	L	Outer_Full	18.999	20.080	PASS
N66	15	20	DFT-QPSK	M	Outer_Full	17.874	18.720	PASS
N66	15	20	DFT-PI2BPSK	M	Outer_Full	17.894	18.800	PASS
N66	15	20	DFT-16QAM	M	Outer_Full	17.898	18.920	PASS
N66	15	20	DFT-64QAM	M	Outer_Full	17.908	18.680	PASS
N66	15	20	DFT-256QAM	M	Outer_Full	17.897	18.600	PASS
N66	15	20	CP-QPSK	M	Outer_Full	18.934	19.920	PASS
N66	15	20	CP-16QAM	M	Outer_Full	18.928	19.880	PASS
N66	15	20	CP-64QAM	M	Outer_Full	18.969	19.720	PASS
N66	15	20	CP-256QAM	M	Outer_Full	19.043	19.920	PASS
N66	15	20	DFT-QPSK	H	Outer_Full	17.876	18.560	PASS
N66	15	20	DFT-PI2BPSK	H	Outer_Full	17.891	18.920	PASS
N66	15	20	DFT-16QAM	H	Outer_Full	17.864	18.640	PASS
N66	15	20	DFT-64QAM	H	Outer_Full	17.902	18.760	PASS
N66	15	20	DFT-256QAM	H	Outer_Full	17.887	18.680	PASS
N66	15	20	CP-QPSK	H	Outer_Full	18.942	19.920	PASS
N66	15	20	CP-16QAM	H	Outer_Full	18.944	20.000	PASS



Unless otherwise agreed in writing, this document is issued by the Company subject to its General Conditions of Service printed overleaf, available on request or accessible at <http://www.sgs.com/en/Terms-and-Conditions.aspx> and, for electronic format documents, subject to Terms and Conditions for Electronic Documents at <http://www.sgs.com/en/Terms-and-Conditions/Terms-e-Documents.aspx>. Attention is drawn to the limitation of liability, indemnification and jurisdiction issues defined therein. Any holder of this document is advised that information contained hereon reflects the Company's findings at the time of its intervention only and within the limits of Client's instructions, if any. The Company's sole responsibility is to its Client and this document does not exonerate parties to a transaction from exercising all their rights and obligations under the transaction documents. This document cannot be reproduced except in full, without prior written approval of the Company. Any unauthorized alteration, forgery or falsification of the content or appearance of this document is unlawful and offenders may be prosecuted to the fullest extent of the law. Unless otherwise stated the results shown in this test report refer only to the sample(s) tested and such sample(s) are retained for 30 days only.

Attention: To check the authenticity of testing/inspection report & certificate, please contact us at telephone: (86-755) 8307 1443, or email: CN.Doccheck@sgs.com
 South of No. 6 Plant, No. 1, Runsheng Road, Suzhou Industrial Park, Suzhou Area, China (Jiangsu) Pilot Free Trade Zone 215000 t (86-512) 62992980 www.sgs.com.cn
 中国·苏州·中国(江苏)自由贸易试验区苏州片区苏州工业园区润胜路1号的6号厂房南楼 邮编: 215000 t (86-512) 62992980 sgs.china@sgs.com



Report No.: SEWM2206000070RG02

Rev.: 01

Page: 22 of 89

N66	15	20	CP-64QAM	H	Outer_Full	18.899	19.920	PASS
N66	15	20	CP-256QAM	H	Outer_Full	18.982	20.120	PASS
N66	15	30	DFT-QPSK	L	Outer_Full	28.577	29.700	PASS
N66	15	30	DFT-PI2BPSK	L	Outer_Full	28.604	29.640	PASS
N66	15	30	DFT-16QAM	L	Outer_Full	28.566	29.820	PASS
N66	15	30	DFT-64QAM	L	Outer_Full	28.612	29.820	PASS
N66	15	30	DFT-256QAM	L	Outer_Full	28.582	29.880	PASS
N66	15	30	CP-QPSK	L	Outer_Full	28.493	29.760	PASS
N66	15	30	CP-16QAM	L	Outer_Full	28.584	29.700	PASS
N66	15	30	CP-64QAM	L	Outer_Full	28.566	29.820	PASS
N66	15	30	CP-256QAM	L	Outer_Full	28.547	30.000	PASS
N66	15	30	DFT-QPSK	M	Outer_Full	28.614	29.700	PASS
N66	15	30	DFT-PI2BPSK	M	Outer_Full	28.63	29.820	PASS
N66	15	30	DFT-16QAM	M	Outer_Full	28.625	29.580	PASS
N66	15	30	DFT-64QAM	M	Outer_Full	28.593	29.820	PASS
N66	15	30	DFT-256QAM	M	Outer_Full	28.624	29.880	PASS
N66	15	30	CP-QPSK	M	Outer_Full	28.601	29.760	PASS
N66	15	30	CP-16QAM	M	Outer_Full	28.611	29.640	PASS
N66	15	30	CP-64QAM	M	Outer_Full	28.598	29.580	PASS
N66	15	30	CP-256QAM	M	Outer_Full	28.592	29.820	PASS
N66	15	30	DFT-QPSK	H	Outer_Full	28.542	29.760	PASS
N66	15	30	DFT-PI2BPSK	H	Outer_Full	28.604	29.820	PASS
N66	15	30	DFT-16QAM	H	Outer_Full	28.551	29.640	PASS
N66	15	30	DFT-64QAM	H	Outer_Full	28.533	29.880	PASS
N66	15	30	DFT-256QAM	H	Outer_Full	28.555	29.880	PASS
N66	15	30	CP-QPSK	H	Outer_Full	28.539	29.760	PASS
N66	15	30	CP-16QAM	H	Outer_Full	28.644	29.760	PASS
N66	15	30	CP-64QAM	H	Outer_Full	28.586	29.940	PASS
N66	15	30	CP-256QAM	H	Outer_Full	28.509	29.820	PASS
N66	15	40	DFT-QPSK	L	Outer_Full	38.614	40.240	PASS
N66	15	40	DFT-PI2BPSK	L	Outer_Full	38.486	40.240	PASS
N66	15	40	DFT-16QAM	L	Outer_Full	38.564	40.240	PASS
N66	15	40	DFT-64QAM	L	Outer_Full	38.608	40.160	PASS
N66	15	40	DFT-256QAM	L	Outer_Full	38.56	40.240	PASS
N66	15	40	CP-QPSK	L	Outer_Full	38.528	40.160	PASS
N66	15	40	CP-16QAM	L	Outer_Full	38.482	40.240	PASS
N66	15	40	CP-64QAM	L	Outer_Full	38.566	40.160	PASS



Unless otherwise agreed in writing, this document is issued by the Company subject to its General Conditions of Service printed overleaf, available on request or accessible at <http://www.sgs.com/en/Terms-and-Conditions.aspx> and, for electronic format documents, subject to Terms and Conditions for Electronic Documents at <http://www.sgs.com/en/Terms-and-Conditions/Terms-e-Documents.aspx>. Attention is drawn to the limitation of liability, indemnification and jurisdiction issues defined therein. Any holder of this document is advised that information contained hereon reflects the Company's findings at the time of its intervention only and within the limits of Client's instructions, if any. The Company's sole responsibility is to its Client and this document does not exonerate parties to a transaction from exercising all their rights and obligations under the transaction documents. This document cannot be reproduced except in full, without prior written approval of the Company. Any unauthorized alteration, forgery or falsification of the content or appearance of this document is unlawful and offenders may be prosecuted to the fullest extent of the law. Unless otherwise stated the results shown in this test report refer only to the sample(s) tested and such sample(s) are retained for 30 days only.

Attention: To check the authenticity of testing/inspection report & certificate, please contact us at telephone: (86-755) 8307 1443, or email: CN.Doccheck@sgs.com
 South of No. 6 Plant, No. 1, Runsheng Road, Suzhou Industrial Park, Suzhou Area, China (Jiangsu) Pilot Free Trade Zone 215000 t (86-512) 62992980 www.sgs.com.cn
 中国·苏州·中国(江苏)自由贸易试验区苏州片区苏州工业园区润胜路1号的6号厂房南楼 邮编: 215000 t (86-512) 62992980 sgs.china@sgs.com



Report No.: SEWM2206000070RG02

Rev.: 01

Page: 23 of 89

N66	15	40	CP-256QAM	L	Outer_Full	38.534	40.240	PASS
N66	15	40	DFT-QPSK	M	Outer_Full	38.483	40.320	PASS
N66	15	40	DFT-PI2BPSK	M	Outer_Full	38.553	40.320	PASS
N66	15	40	DFT-16QAM	M	Outer_Full	38.575	40.240	PASS
N66	15	40	DFT-64QAM	M	Outer_Full	38.613	40.240	PASS
N66	15	40	DFT-256QAM	M	Outer_Full	38.647	40.320	PASS
N66	15	40	CP-QPSK	M	Outer_Full	38.566	40.240	PASS
N66	15	40	CP-16QAM	M	Outer_Full	38.625	40.160	PASS
N66	15	40	CP-64QAM	M	Outer_Full	38.581	40.240	PASS
N66	15	40	CP-256QAM	M	Outer_Full	38.583	40.240	PASS
N66	15	40	DFT-QPSK	H	Outer_Full	38.675	40.240	PASS
N66	15	40	DFT-PI2BPSK	H	Outer_Full	38.597	40.400	PASS
N66	15	40	DFT-16QAM	H	Outer_Full	38.626	40.160	PASS
N66	15	40	DFT-64QAM	H	Outer_Full	38.557	40.160	PASS
N66	15	40	DFT-256QAM	H	Outer_Full	38.564	40.240	PASS
N66	15	40	CP-QPSK	H	Outer_Full	38.52	40.400	PASS
N66	15	40	CP-16QAM	H	Outer_Full	38.56	40.320	PASS
N66	15	40	CP-64QAM	H	Outer_Full	38.483	40.400	PASS
N66	15	40	CP-256QAM	H	Outer_Full	38.531	40.240	PASS

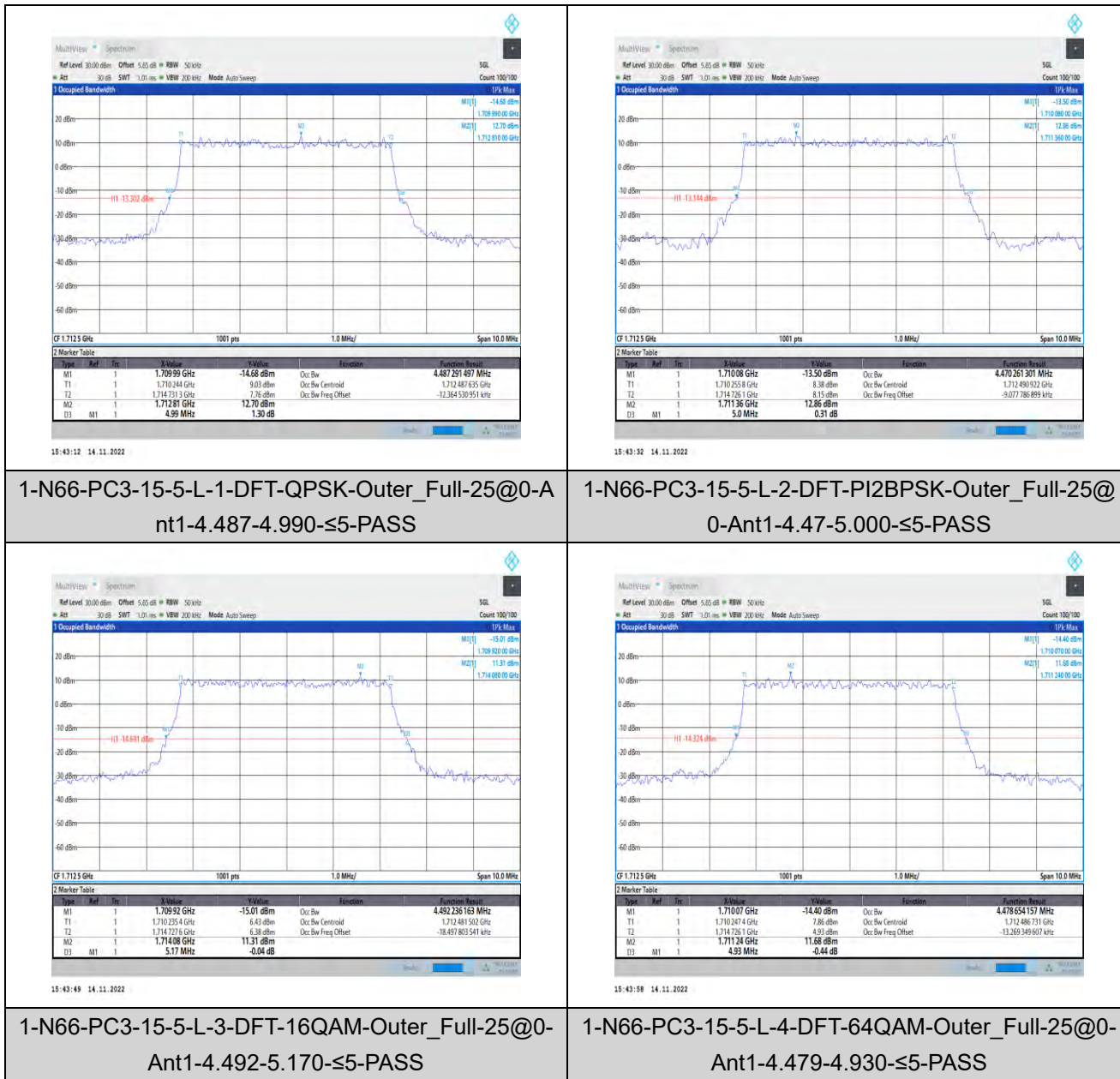


Unless otherwise agreed in writing, this document is issued by the Company subject to its General Conditions of Service printed overleaf, available on request or accessible at <http://www.sgs.com/en/Terms-and-Conditions.aspx> and, for electronic format documents, subject to Terms and Conditions for Electronic Documents at <http://www.sgs.com/en/Terms-and-Conditions/Terms-e-Documents.aspx>. Attention is drawn to the limitation of liability, indemnification and jurisdiction issues defined therein. Any holder of this document is advised that information contained hereon reflects the Company's findings at the time of its intervention only and within the limits of Client's instructions, if any. The Company's sole responsibility is to its Client and this document does not exonerate parties to a transaction from exercising all their rights and obligations under the transaction documents. This document cannot be reproduced except in full, without prior written approval of the Company. Any unauthorized alteration, forgery or falsification of the content or appearance of this document is unlawful and offenders may be prosecuted to the fullest extent of the law. Unless otherwise stated the results shown in this test report refer only to the sample(s) tested and such sample(s) are retained for 30 days only.

Attention: To check the authenticity of testing/inspection report & certificate, please contact us at telephone: (86-755) 8307 1443, or email: CN.Doccheck@sgs.com

South of No. 6 Plant, No. 1, Runsheng Road, Suzhou Industrial Park, Suzhou Area, China (Jiangsu) Pilot Free Trade Zone 215000 t (86-512) 62992980 www.sgs.com.cn
 中国·苏州·中国(江苏)自由贸易试验区苏州片区苏州工业园区润胜路1号的6号厂房南楼 邮编: 215000 t (86-512) 62992980 sgs.china@sgs.com

Test Graphs



1-N66-PC3-15-5-L-1-DFT-QPSK-Outer_Full-25@0-A
 nt1-4.487-4.990-≤5-PASS

1-N66-PC3-15-5-L-2-DFT-PI2BPSK-Outer_Full-25@
 0-Ant1-4.47-5.000-≤5-PASS

1-N66-PC3-15-5-L-3-DFT-16QAM-Outer_Full-25@0-
 Ant1-4.492-5.170-≤5-PASS

1-N66-PC3-15-5-L-4-DFT-64QAM-Outer_Full-25@0-
 Ant1-4.479-4.930-≤5-PASS



Unless otherwise agreed in writing, this document is issued by the Company subject to its General Conditions of Service printed overleaf, available on request or accessible at <http://www.sgs.com/en/Terms-and-Conditions.aspx> and, for electronic format documents, subject to Terms and Conditions for Electronic Documents at <http://www.sgs.com/en/Terms-and-Conditions/Terms-e-Documents.aspx>. Attention is drawn to the limitation of liability, indemnification and jurisdiction issues defined therein. Any holder of this document is advised that information contained hereon reflects the Company's findings at the time of its intervention only and within the limits of Client's instructions, if any. The Company's sole responsibility is to its Client and this document does not exonerate parties to a transaction from exercising all their rights and obligations under the transaction documents. This document cannot be reproduced except in full, without prior written approval of the Company. Any unauthorized alteration, forgery or falsification of the content or appearance of this document is unlawful and offenders may be prosecuted to the fullest extent of the law. Unless otherwise stated the results shown in this test report refer only to the sample(s) tested and such sample(s) are retained for 30 days only.

Attention: To check the authenticity of testing/inspection report & certificate, please contact us at telephone: (86-755) 8307 1443, or email: CN.Doccheck@sgs.com
 South of No. 6 Plant, No. 1, Runsheng Road, Suzhou Industrial Park, Suzhou Area, China (Jiangsu) Pkx Free Trade Zone 215000 t (86-512) 62992980 www.sgs.com.cn
 中国·苏州·中国(江苏)自由贸易试验区苏州片区苏州工业园区润胜路1号的6号厂房南楼 邮编: 215000 t (86-512) 62992980 sgs.china@sgs.com



1-N66-PC3-15-5-L-5-DFT-256QAM-Outer_Full-25@0-Ant1-4.487-5.060-≤5-PASS



1-N66-PC3-15-5-L-6-CP-QPSK-Outer_Full-25@0-An t1-4.488-5.110-≤5-PASS



1-N66-PC3-15-5-L-7-CP-16QAM-Outer_Full-25@0-Ant1-4.483-5.050-≤5-PASS



1-N66-PC3-15-5-L-8-CP-64QAM-Outer_Full-25@0-Ant1-4.481-5.040-≤5-PASS



Unless otherwise agreed in writing, this document is issued by the Company subject to its General Conditions of Service printed overleaf, available on request or accessible at <http://www.sgs.com/en/Terms-and-Conditions.aspx> and, for electronic format documents, subject to Terms and Conditions for Electronic Documents at <http://www.sgs.com/en/Terms-and-Conditions/Terms-e-Documents.aspx>. Attention is drawn to the limitation of liability, indemnification and jurisdiction issues defined therein. Any holder of this document is advised that information contained hereon reflects the Company's findings at the time of its intervention only and within the limits of Client's instructions, if any. The Company's sole responsibility is to its Client and this document does not exonerate parties to a transaction from exercising all their rights and obligations under the transaction documents. This document cannot be reproduced except in full, without prior written approval of the Company. Any unauthorized alteration, forgery or falsification of the content or appearance of this document is unlawful and offenders may be prosecuted to the fullest extent of the law. Unless otherwise stated the results shown in this test report refer only to the sample(s) tested and such sample(s) are retained for 30 days only.

Attention: To check the authenticity of testing/inspection report & certificate, please contact us at telephone: (86-755) 83071443, or email: CN.Doccheck@sgs.com
 South of No. 6 Plant, No. 1, Runsheng Road, Suzhou Industrial Park, Suzhou Area, China (Jiangsu) Pilot Free Trade Zone 215000 t (86-512) 62992980 www.sgs.com.cn
 中国·苏州·中国(江苏)自由贸易试验区苏州片区苏州工业园区润胜路1号的6号厂房南楼 邮编: 215000 t (86-512) 62992980 sgs.china@sgs.com



1-N66-PC3-15-5-L-9-CP-256QAM-Outer_Full-25@0-Ant1-4.476-5.220-≤5-PASS



1-N66-PC3-15-5-M-1-DFT-QPSK-Outer_Full-25@0-Ant1-4.472-4.940-≤5-PASS



1-N66-PC3-15-5-M-2-DFT-PI2BPSK-Outer_Full-25@0-Ant1-4.488-4.990-≤5-PASS



1-N66-PC3-15-5-M-3-DFT-16QAM-Outer_Full-25@0-Ant1-4.487-5.060-≤5-PASS



Unless otherwise agreed in writing, this document is issued by the Company subject to its General Conditions of Service printed overleaf, available on request or accessible at <http://www.sgs.com/en/Terms-and-Conditions.aspx> and, for electronic format documents, subject to Terms and Conditions for Electronic Documents at <http://www.sgs.com/en/Terms-and-Conditions/Terms-e-Documents.aspx>. Attention is drawn to the limitation of liability, indemnification and jurisdiction issues defined therein. Any holder of this document is advised that information contained hereon reflects the Company's findings at the time of its intervention only and within the limits of Client's instructions, if any. The Company's sole responsibility is to its Client and this document does not exonerate parties to a transaction from exercising all their rights and obligations under the transaction documents. This document cannot be reproduced except in full, without prior written approval of the Company. Any unauthorized alteration, forgery or falsification of the content or appearance of this document is unlawful and offenders may be prosecuted to the fullest extent of the law. Unless otherwise stated the results shown in this test report refer only to the sample(s) tested and such sample(s) are retained for 30 days only.

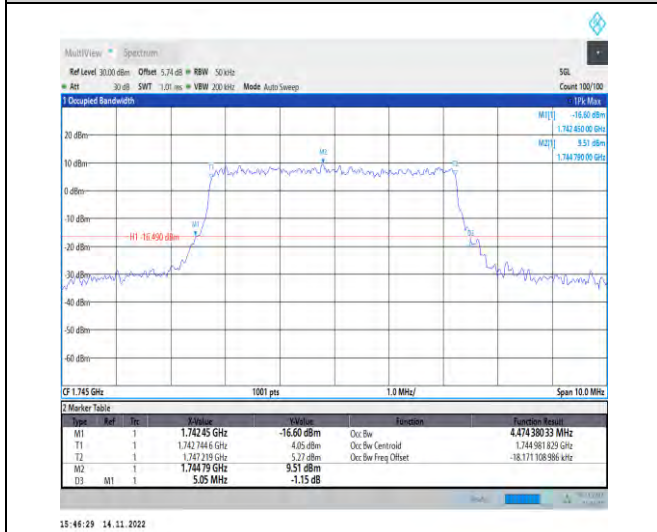
Attention: To check the authenticity of testing/inspection report & certificate, please contact us at telephone: (86-755) 8307 1443, or email: CN.Doccheck@sgs.com
 South of No. 6 Plant, No. 1, Runsheng Road, Suzhou Industrial Park, Suzhou Area, China (Jiangsu) Pkx Free Trade Zone 215000 t (86-512) 62992980 www.sgs.com.cn
 中国·苏州·中国(江苏)自由贸易试验区苏州片区苏州工业园区润胜路1号的6号厂房南楼 邮编: 215000 t (86-512) 62992980 sgs.china@sgs.com



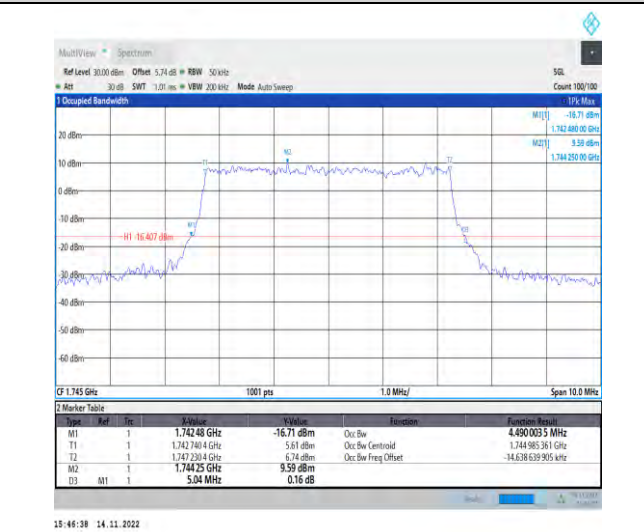
1-N66-PC3-15-5-M-4-DFT-64QAM-Outer_Full-25@0-Ant1-4.479-5.000-≤5-PASS



1-N66-PC3-15-5-M-5-DFT-256QAM-Outer_Full-25@0-Ant1-4.487-5.130-≤5-PASS



1-N66-PC3-15-5-M-6-CP-QPSK-Outer_Full-25@0-Ant1-4.474-5.050-≤5-PASS

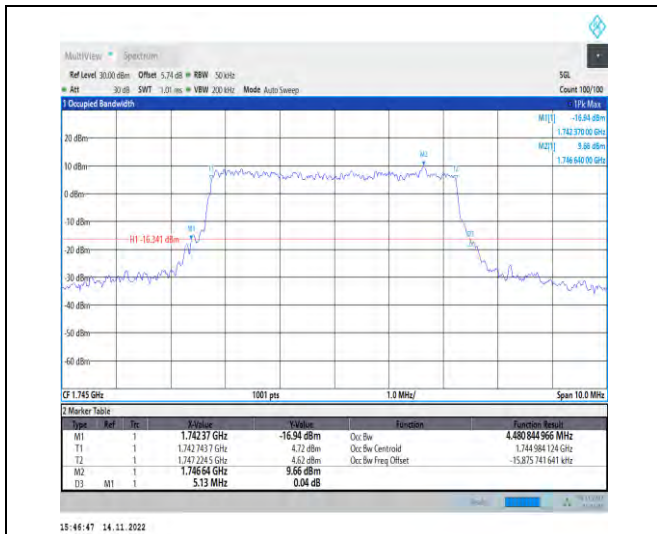


1-N66-PC3-15-5-M-7-CP-16QAM-Outer_Full-25@0-Ant1-4.49-5.040-≤5-PASS



Unless otherwise agreed in writing, this document is issued by the Company subject to its General Conditions of Service printed overleaf, available on request or accessible at <http://www.sgs.com/en/Terms-and-Conditions.aspx> and, for electronic format documents, subject to Terms and Conditions for Electronic Documents at <http://www.sgs.com/en/Terms-and-Conditions/Terms-e-Documents.aspx>. Attention is drawn to the limitation of liability, indemnification and jurisdiction issues defined therein. Any holder of this document is advised that information contained hereon reflects the Company's findings at the time of its intervention only and within the limits of Client's instructions, if any. The Company's sole responsibility is to its Client and this document does not exonerate parties to a transaction from exercising all their rights and obligations under the transaction documents. This document cannot be reproduced except in full, without prior written approval of the Company. Any unauthorized alteration, forgery or falsification of the content or appearance of this document is unlawful and offenders may be prosecuted to the fullest extent of the law. Unless otherwise stated the results shown in this test report refer only to the sample(s) tested and such sample(s) are retained for 30 days only.

Attention: To check the authenticity of testing/inspection report & certificate, please contact us at telephone: (86-755) 8307 1443, or email: CN.Doccheck@sgs.com
 South of No. 6 Plant, No. 1, Runsheng Road, Suzhou Industrial Park, Suzhou Area, China (Jiangsu) Pkx Free Trade Zone 215000 t (86-512) 62992980 www.sgs.com.cn
 中国·苏州·中国 (江苏) 自由贸易试验区苏州片区苏州工业园区润胜路1号的6号厂房南楼 邮编: 215000 t (86-512) 62992980 sgs.china@sgs.com



1-N66-PC3-15-5-M-8-CP-64QAM-Outer_Full-25@0-Ant1-4.481-5.130-≤5-PASS



1-N66-PC3-15-5-M-9-CP-256QAM-Outer_Full-25@0-Ant1-4.492-5.010-≤5-PASS



1-N66-PC3-15-5-H-1-DFT-QPSK-Outer_Full-25@0-Ant1-4.484-4.930-≤5-PASS

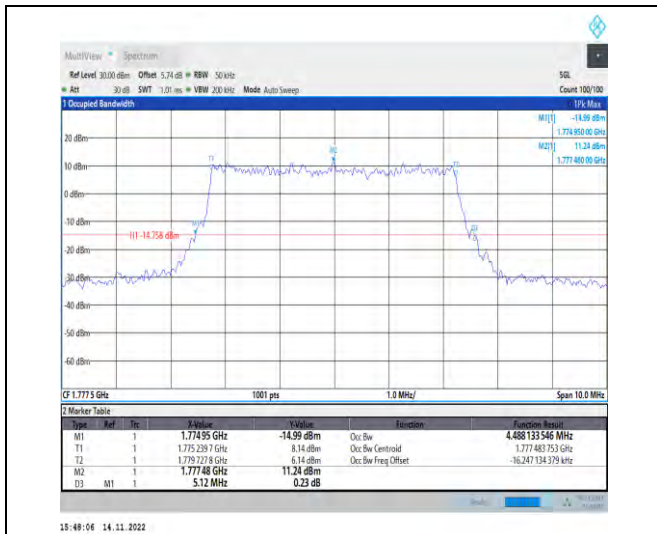


1-N66-PC3-15-5-H-2-DFT-P12BPSK-Outer_Full-25@0-Ant1-4.48-5.020-≤5-PASS



Unless otherwise agreed in writing, this document is issued by the Company subject to its General Conditions of Service printed overleaf, available on request or accessible at <http://www.sgs.com/en/Terms-and-Conditions.aspx> and, for electronic format documents, subject to Terms and Conditions for Electronic Documents at <http://www.sgs.com/en/Terms-and-Conditions/Terms-e-Documents.aspx>. Attention is drawn to the limitation of liability, indemnification and jurisdiction issues defined therein. Any holder of this document is advised that information contained hereon reflects the Company's findings at the time of its intervention only and within the limits of Client's instructions, if any. The Company's sole responsibility is to its Client and this document does not exonerate parties to a transaction from exercising all their rights and obligations under the transaction documents. This document cannot be reproduced except in full, without prior written approval of the Company. Any unauthorized alteration, forgery or falsification of the content or appearance of this document is unlawful and offenders may be prosecuted to the fullest extent of the law. Unless otherwise stated the results shown in this test report refer only to the sample(s) tested and such sample(s) are retained for 30 days only.

Attention: To check the authenticity of testing/inspection report & certificate, please contact us at telephone: (86-755) 8307 1443, or email: CN.Doccheck@sgs.com
 South of No. 6 Plant, No. 1, Runsheng Road, Suzhou Industrial Park, Suzhou Area, China (Jiangsu) Pkx Free Trade Zone 215000 t (86-512) 62992980 www.sgs.com.cn
 中国·苏州·中国(江苏)自由贸易试验区苏州片区苏州工业园区润胜路1号的6号厂房南楼 邮编: 215000 t (86-512) 62992980 sgs.china@sgs.com



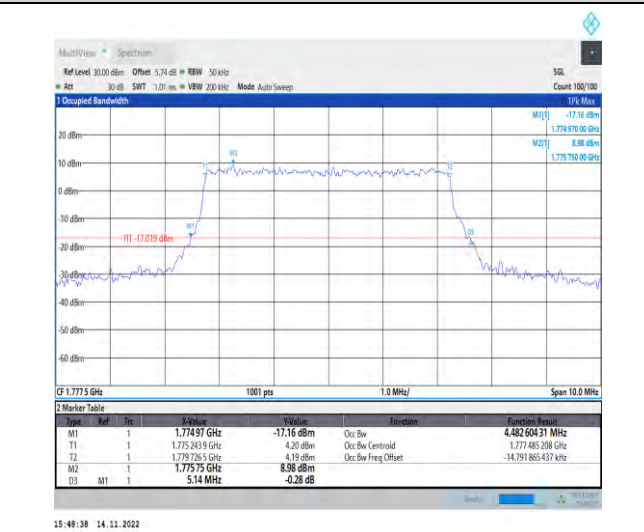
1-N66-PC3-15-5-H-3-DFT-16QAM-Outer_Full-25@0
 -Ant1-4.488-5.120-≤5-PASS



1-N66-PC3-15-5-H-4-DFT-64QAM-Outer_Full-25@0-
 Ant1-4.489-4.900-≤5-PASS



1-N66-PC3-15-5-H-5-DFT-256QAM-Outer_Full-25@
 0-Ant1-4.48-5.040-≤5-PASS



1-N66-PC3-15-5-H-6-CP-QPSK-Outer_Full-25@0-A
 nt1-4.483-5.140-≤5-PASS



Unless otherwise agreed in writing, this document is issued by the Company subject to its General Conditions of Service printed overleaf, available on request or accessible at <http://www.sgs.com/en/Terms-and-Conditions.aspx> and, for electronic format documents, subject to Terms and Conditions for Electronic Documents at <http://www.sgs.com/en/Terms-and-Conditions/Terms-e-Documents.aspx>. Attention is drawn to the limitation of liability, indemnification and jurisdiction issues defined therein. Any holder of this document is advised that information contained hereon reflects the Company's findings at the time of its intervention only and within the limits of Client's instructions, if any. The Company's sole responsibility is to its Client and this document does not exonerate parties to a transaction from exercising all their rights and obligations under the transaction documents. This document cannot be reproduced except in full, without prior written approval of the Company. Any unauthorized alteration, forgery or falsification of the content or appearance of this document is unlawful and offenders may be prosecuted to the fullest extent of the law. Unless otherwise stated the results shown in this test report refer only to the sample(s) tested and such sample(s) are retained for 30 days only.

Attention: To check the authenticity of testing/inspection report & certificate, please contact us at telephone: (86-755) 83071443, or email: CN.Doccheck@sgs.com
 South of No. 6 Plant, No. 1, Runsheng Road, Suzhou Industrial Park, Suzhou Area, China (Jiangsu) Pkx Free Trade Zone 215000 t (86-512) 62992980 www.sgs.com.cn
 中国·苏州·中国(江苏)自由贸易试验区苏州片区苏州工业园区润胜路1号的6号厂房南楼 邮编: 215000 t (86-512) 62992980 sgs.china@sgs.com



1-N66-PC3-15-5-H-7-CP-16QAM-Outer_Full-25@0-Ant1-4.485-5.070-≤5-PASS



1-N66-PC3-15-5-H-8-CP-64QAM-Outer_Full-25@0-Ant1-4.486-5.090-≤5-PASS



1-N66-PC3-15-5-H-9-CP-256QAM-Outer_Full-25@0-Ant1-4.488-5.170-≤5-PASS



1-N66-PC3-15-10-L-1-DFT-QPSK-Outer_Full-50@0-Ant1-8.934-9.640-≤10-PASS

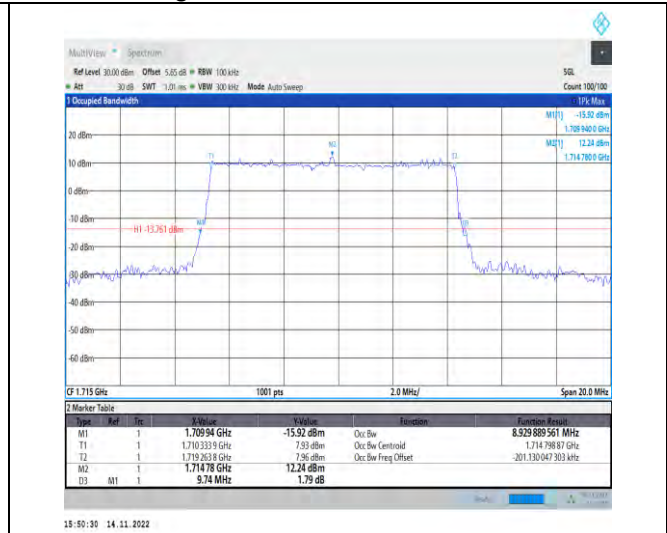


Unless otherwise agreed in writing, this document is issued by the Company subject to its General Conditions of Service printed overleaf, available on request or accessible at <http://www.sgs.com/en/Terms-and-Conditions.aspx> and, for electronic format documents, subject to Terms and Conditions for Electronic Documents at <http://www.sgs.com/en/Terms-and-Conditions/Terms-e-Documents.aspx>. Attention is drawn to the limitation of liability, indemnification and jurisdiction issues defined therein. Any holder of this document is advised that information contained hereon reflects the Company's findings at the time of its intervention only and within the limits of Client's instructions, if any. The Company's sole responsibility is to its Client and this document does not exonerate parties to a transaction from exercising all their rights and obligations under the transaction documents. This document cannot be reproduced except in full, without prior written approval of the Company. Any unauthorized alteration, forgery or falsification of the content or appearance of this document is unlawful and offenders may be prosecuted to the fullest extent of the law. Unless otherwise stated the results shown in this test report refer only to the sample(s) tested and such sample(s) are retained for 30 days only.

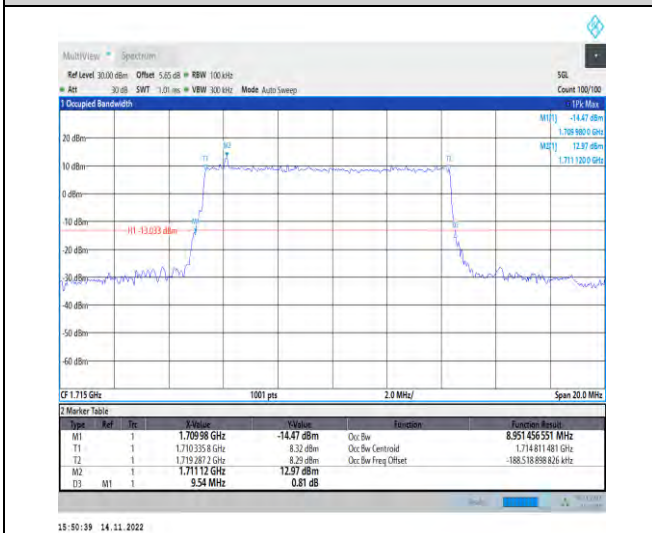
Attention: To check the authenticity of testing/inspection report & certificate, please contact us at telephone: (86-755) 8307 1443, or email: CN.Doccheck@sgs.com
 South of No. 6 Plant, No. 1, Runsheng Road, Suzhou Industrial Park, Suzhou Area, China (Jiangsu) Pkx Free Trade Zone 215000 t (86-512) 62992980 www.sgs.com.cn
 中国·苏州·中国(江苏)自由贸易试验区苏州片区苏州工业园区润胜路1号的6号厂房南楼 邮编: 215000 t (86-512) 62992980 sgs.china@sgs.com



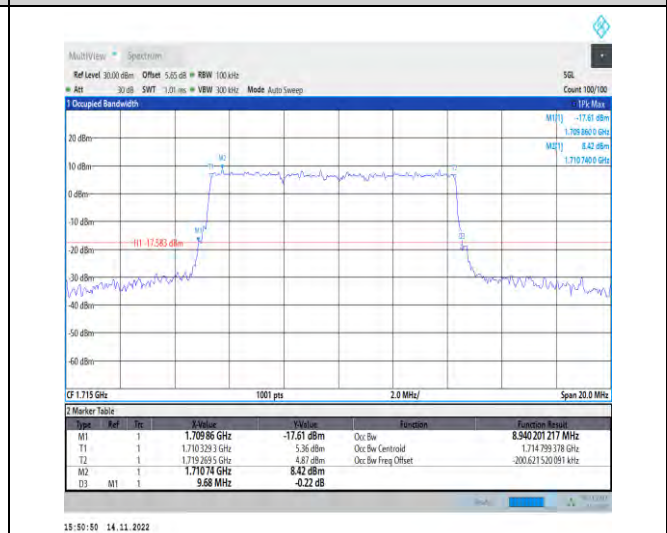
1-N66-PC3-15-10-L-2-DFT-PI2BPSK-Outer_Full-50 @0-Ant1-8.92-9.620-≤10-PASS



1-N66-PC3-15-10-L-3-DFT-16QAM-Outer_Full-50 @0-Ant1-8.93-9.740-≤10-PASS



1-N66-PC3-15-10-L-4-DFT-64QAM-Outer_Full-50 @0-Ant1-8.951-9.540-≤10-PASS



1-N66-PC3-15-10-L-5-DFT-256QAM-Outer_Full-50 @0-Ant1-8.94-9.680-≤10-PASS

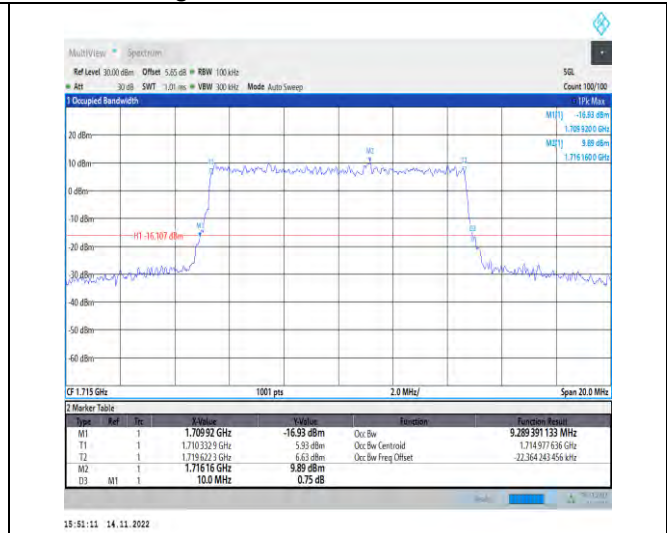


Unless otherwise agreed in writing, this document is issued by the Company subject to its General Conditions of Service printed overleaf, available on request or accessible at <http://www.sgs.com/en/Terms-and-Conditions.aspx> and, for electronic format documents, subject to Terms and Conditions for Electronic Documents at <http://www.sgs.com/en/Terms-and-Conditions/Terms-e-Documents.aspx>. Attention is drawn to the limitation of liability, indemnification and jurisdiction issues defined therein. Any holder of this document is advised that information contained hereon reflects the Company's findings at the time of its intervention only and within the limits of Client's instructions, if any. The Company's sole responsibility is to its Client and this document does not exonerate parties to a transaction from exercising all their rights and obligations under the transaction documents. This document cannot be reproduced except in full, without prior written approval of the Company. Any unauthorized alteration, forgery or falsification of the content or appearance of this document is unlawful and offenders may be prosecuted to the fullest extent of the law. Unless otherwise stated the results shown in this test report refer only to the sample(s) tested and such sample(s) are retained for 30 days only.

Attention: To check the authenticity of testing/inspection report & certificate, please contact us at telephone: (86-755) 8307 1443, or email: CN.Doccheck@sgs.com
 South of No. 6 Plant, No. 1, Runsheng Road, Suzhou Industrial Park, Suzhou Area, China (Jiangsu) Pilot Free Trade Zone 215000 t (86-512) 62992980 www.sgs.com.cn
 中国·苏州·中国 (江苏) 自由贸易试验区苏州片区苏州工业园区润胜路1号的6号厂房南楼 邮编: 215000 t (86-512) 62992980 sgs.china@sgs.com



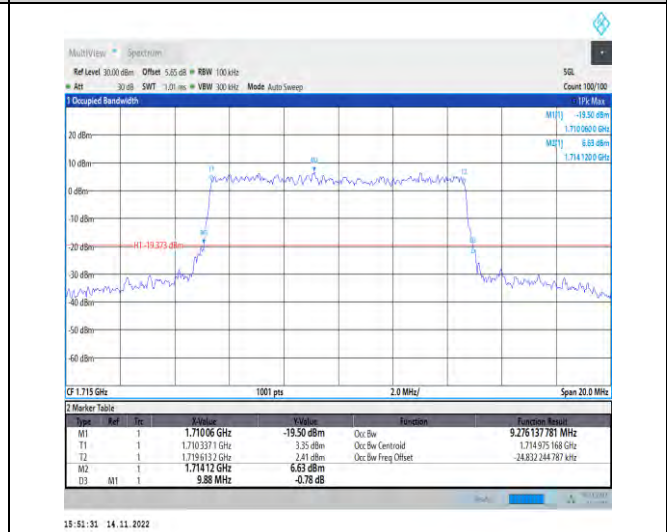
1-N66-PC3-15-10-L-6-CP-QPSK-Outer_Full-52@0-Ant1-9.278-10.200-≤10-PASS



1-N66-PC3-15-10-L-7-CP-16QAM-Outer_Full-52@0-Ant1-9.289-10.000-≤10-PASS



1-N66-PC3-15-10-L-8-CP-64QAM-Outer_Full-52@0-Ant1-9.293-9.920-≤10-PASS

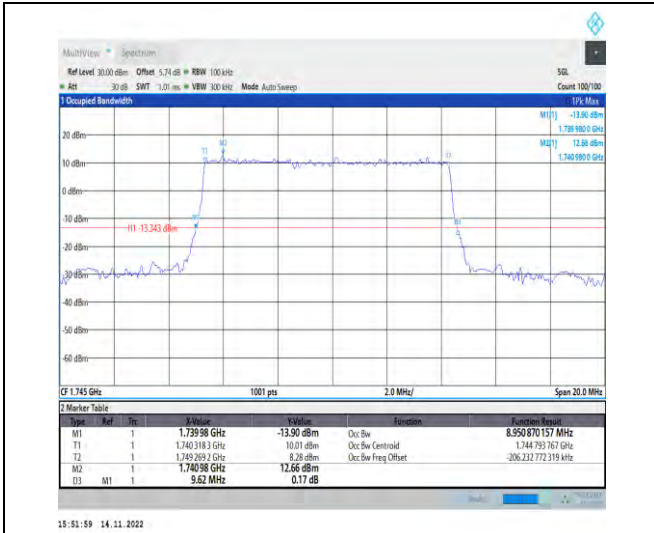


1-N66-PC3-15-10-L-9-CP-256QAM-Outer_Full-52@0-Ant1-9.276-9.880-≤10-PASS



Unless otherwise agreed in writing, this document is issued by the Company subject to its General Conditions of Service printed overleaf, available on request or accessible at <http://www.sgs.com/en/Terms-and-Conditions.aspx> and, for electronic format documents, subject to Terms and Conditions for Electronic Documents at <http://www.sgs.com/en/Terms-and-Conditions/Terms-e-Documents.aspx>. Attention is drawn to the limitation of liability, indemnification and jurisdiction issues defined therein. Any holder of this document is advised that information contained hereon reflects the Company's findings at the time of its intervention only and within the limits of Client's instructions, if any. The Company's sole responsibility is to its Client and this document does not exonerate parties to a transaction from exercising all their rights and obligations under the transaction documents. This document cannot be reproduced except in full, without prior written approval of the Company. Any unauthorized alteration, forgery or falsification of the content or appearance of this document is unlawful and offenders may be prosecuted to the fullest extent of the law. Unless otherwise stated the results shown in this test report refer only to the sample(s) tested and such sample(s) are retained for 30 days only.

Attention: To check the authenticity of testing/inspection report & certificate, please contact us at telephone: (86-755) 8307 1443, or email: CN.Doccheck@sgs.com
 South of No. 6 Plant, No. 1, Runsheng Road, Suzhou Industrial Park, Suzhou Area, China (Jiangsu) Pilot Free Trade Zone 215000 t (86-512) 62992980 www.sgs.com.cn
 中国·苏州·中国(江苏)自由贸易试验区苏州片区苏州工业园区润胜路1号的6号厂房南楼 邮编: 215000 t (86-512) 62992980 sgs.china@sgs.com



1-N66-PC3-15-10-M-1-DFT-QPSK-Outer_Full-50@0
-Ant1-8.951-9.620-≤10-PASS



1-N66-PC3-15-10-M-2-DFT-PI2BPSK-Outer_Full-50@0-Ant1-8.929-9.600-≤10-PASS



1-N66-PC3-15-10-M-3-DFT-16QAM-Outer_Full-50@0-Ant1-8.953-9.760-≤10-PASS

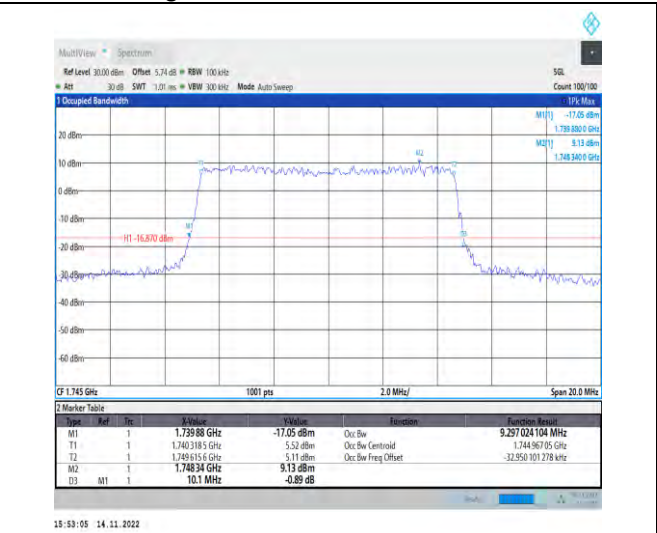


1-N66-PC3-15-10-M-4-DFT-64QAM-Outer_Full-50@0-Ant1-8.957-9.640-≤10-PASS



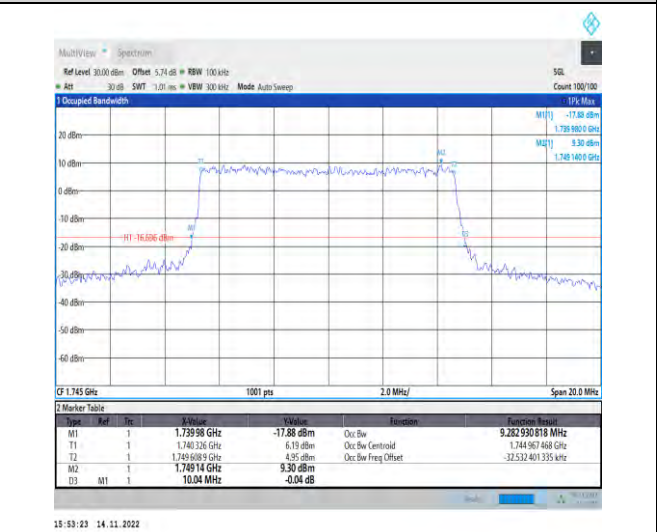
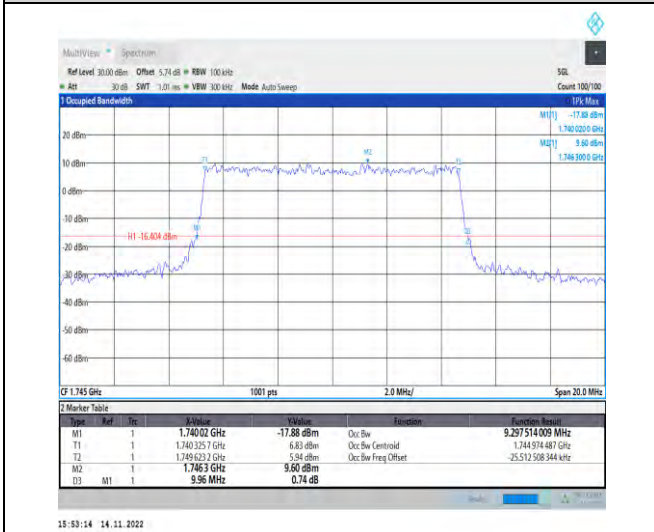
Unless otherwise agreed in writing, this document is issued by the Company subject to its General Conditions of Service printed overleaf, available on request or accessible at <http://www.sgs.com/en/Terms-and-Conditions.aspx> and, for electronic format documents, subject to Terms and Conditions for Electronic Documents at <http://www.sgs.com/en/Terms-and-Conditions/Terms-e-Documents.aspx>. Attention is drawn to the limitation of liability, indemnification and jurisdiction issues defined therein. Any holder of this document is advised that information contained hereon reflects the Company's findings at the time of its intervention only and within the limits of Client's instructions, if any. The Company's sole responsibility is to its Client and this document does not exonerate parties to a transaction from exercising all their rights and obligations under the transaction documents. This document cannot be reproduced except in full, without prior written approval of the Company. Any unauthorized alteration, forgery or falsification of the content or appearance of this document is unlawful and offenders may be prosecuted to the fullest extent of the law. Unless otherwise stated the results shown in this test report refer only to the sample(s) tested and such sample(s) are retained for 30 days only.

Attention: To check the authenticity of testing/inspection report & certificate, please contact us at telephone: (86-755) 83071443, or email: CN.Doccheck@sgs.com
 South of No. 6 Plant, No. 1, Runsheng Road, Suzhou Industrial Park, Suzhou Area, China (Jiangsu) Pkx Free Trade Zone 215000 t (86-512) 62992980 www.sgs.com.cn
 中国·苏州·中国(江苏)自由贸易试验区苏州片区苏州工业园区润胜路1号的6号厂房南楼 邮编: 215000 t (86-512) 62992980 sgs.china@sgs.com



1-N66-PC3-15-10-M-5-DFT-256QAM-Outer_Full-50 @0-Ant1-8.93-9.600-≤10-PASS

1-N66-PC3-15-10-M-6-CP-QPSK-Outer_Full-52@0-Ant1-9.297-10.100-≤10-PASS



1-N66-PC3-15-10-M-7-CP-16QAM-Outer_Full-52@0-Ant1-9.298-9.960-≤10-PASS

1-N66-PC3-15-10-M-8-CP-64QAM-Outer_Full-52@0-Ant1-9.283-10.040-≤10-PASS

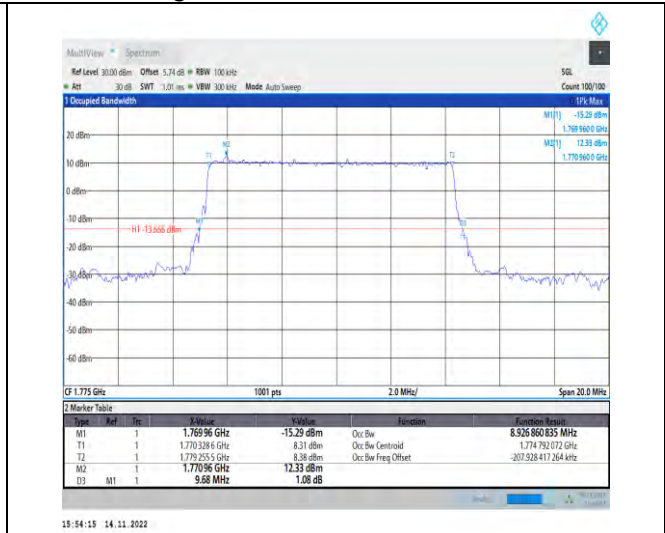


Unless otherwise agreed in writing, this document is issued by the Company subject to its General Conditions of Service printed overleaf, available on request or accessible at <http://www.sgs.com/en/Terms-and-Conditions.aspx> and, for electronic format documents, subject to Terms and Conditions for Electronic Documents at <http://www.sgs.com/en/Terms-and-Conditions/Terms-e-Documents.aspx>. Attention is drawn to the limitation of liability, indemnification and jurisdiction issues defined therein. Any holder of this document is advised that information contained hereon reflects the Company's findings at the time of its intervention only and within the limits of Client's instructions, if any. The Company's sole responsibility is to its Client and this document does not exonerate parties to a transaction from exercising all their rights and obligations under the transaction documents. This document cannot be reproduced except in full, without prior written approval of the Company. Any unauthorized alteration, forgery or falsification of the content or appearance of this document is unlawful and offenders may be prosecuted to the fullest extent of the law. Unless otherwise stated the results shown in this test report refer only to the sample(s) tested and such sample(s) are retained for 30 days only.

Attention: To check the authenticity of testing/inspection report & certificate, please contact us at telephone: (86-755) 83071443, or email: CN.Doccheck@sgs.com
 South of No. 6 Plant, No. 1, Runsheng Road, Suzhou Industrial Park, Suzhou Area, China (Jiangsu) Pilot Free Trade Zone 215000 t (86-512) 62992980 www.sgs.com.cn
 中国·苏州·中国(江苏)自由贸易试验区苏州片区苏州工业园区润胜路1号的6号厂房南楼 邮编: 215000 t (86-512) 62992980 sgs.china@sgs.com



1-N66-PC3-15-10-M-9-CP-256QAM-Outer_Full-52@0-Ant1-9.304-10.120-≤10-PASS



1-N66-PC3-15-10-H-1-DFT-QPSK-Outer_Full-50@0-Ant1-8.927-9.680-≤10-PASS



1-N66-PC3-15-10-H-2-DFT-PI2BPSK-Outer_Full-50@0-Ant1-8.913-9.660-≤10-PASS

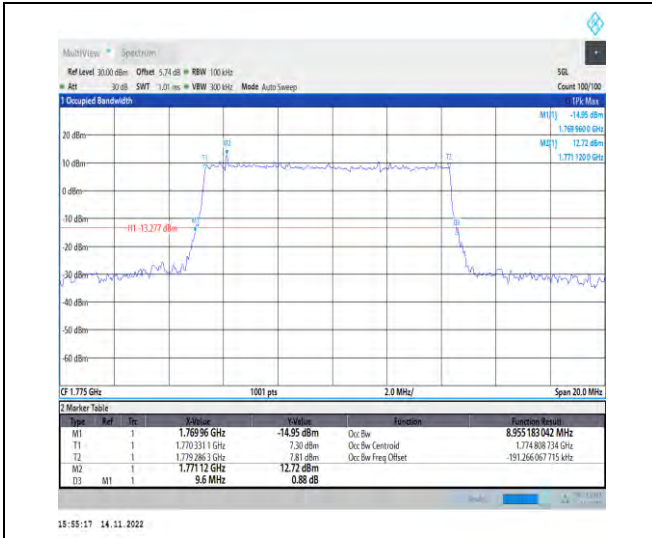


1-N66-PC3-15-10-H-3-DFT-16QAM-Outer_Full-50@0-Ant1-8.963-9.860-≤10-PASS

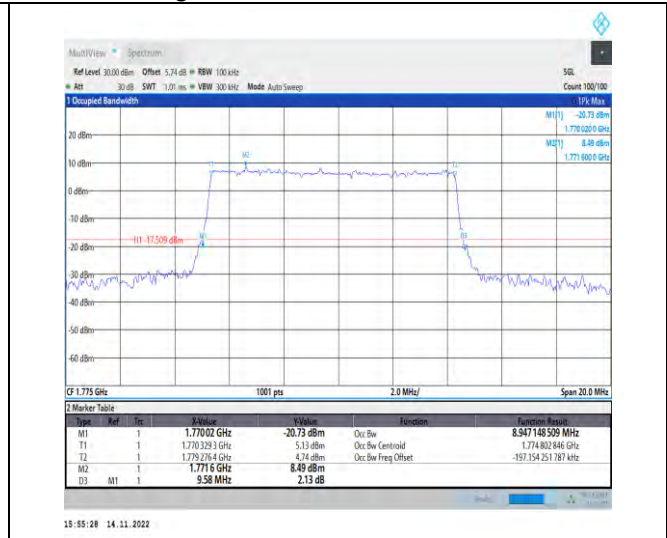


Unless otherwise agreed in writing, this document is issued by the Company subject to its General Conditions of Service printed overleaf, available on request or accessible at <http://www.sgs.com/en/Terms-and-Conditions.aspx> and, for electronic format documents, subject to Terms and Conditions for Electronic Documents at <http://www.sgs.com/en/Terms-and-Conditions/Terms-e-Documents.aspx>. Attention is drawn to the limitation of liability, indemnification and jurisdiction issues defined therein. Any holder of this document is advised that information contained hereon reflects the Company's findings at the time of its intervention only and within the limits of Client's instructions, if any. The Company's sole responsibility is to its Client and this document does not exonerate parties to a transaction from exercising all their rights and obligations under the transaction documents. This document cannot be reproduced except in full, without prior written approval of the Company. Any unauthorized alteration, forgery or falsification of the content or appearance of this document is unlawful and offenders may be prosecuted to the fullest extent of the law. Unless otherwise stated the results shown in this test report refer only to the sample(s) tested and such sample(s) are retained for 30 days only.

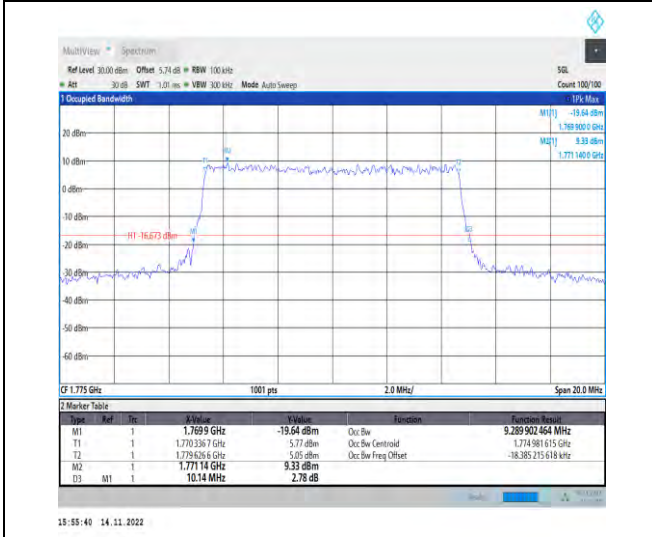
Attention: To check the authenticity of testing/inspection report & certificate, please contact us at telephone: (86-755) 83071443, or email: CN.Doccheck@sgs.com
 South of No. 6 Plant, No. 1, Runsheng Road, Suzhou Industrial Park, Suzhou Area, China (Jiangsu) Pilot Free Trade Zone 215000 t (86-512) 62992980 www.sgs.com.cn
 中国·苏州·中国(江苏)自由贸易试验区苏州片区苏州工业园区润胜路1号的6号厂房南楼 邮编: 215000 t (86-512) 62992980 sgs.china@sgs.com



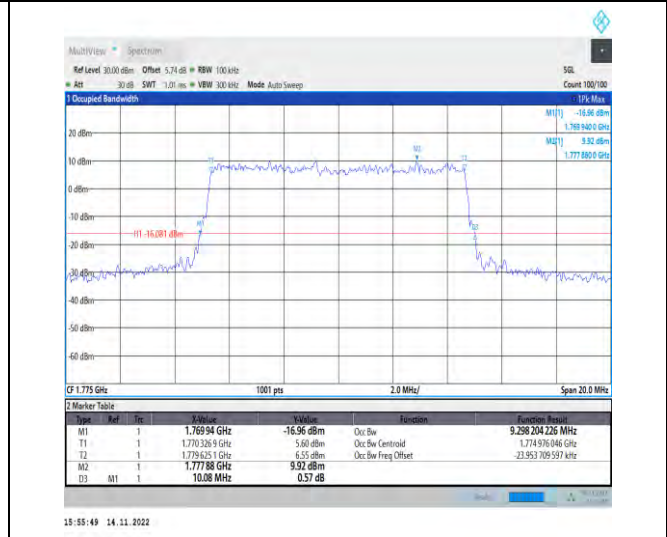
1-N66-PC3-15-10-H-4-DFT-64QAM-Outer_Full-50@0-Ant1-8.955-9.600-≤10-PASS



1-N66-PC3-15-10-H-5-DFT-256QAM-Outer_Full-50@0-Ant1-8.947-9.580-≤10-PASS



1-N66-PC3-15-10-H-6-CP-QPSK-Outer_Full-52@0-Ant1-9.29-10.140-≤10-PASS

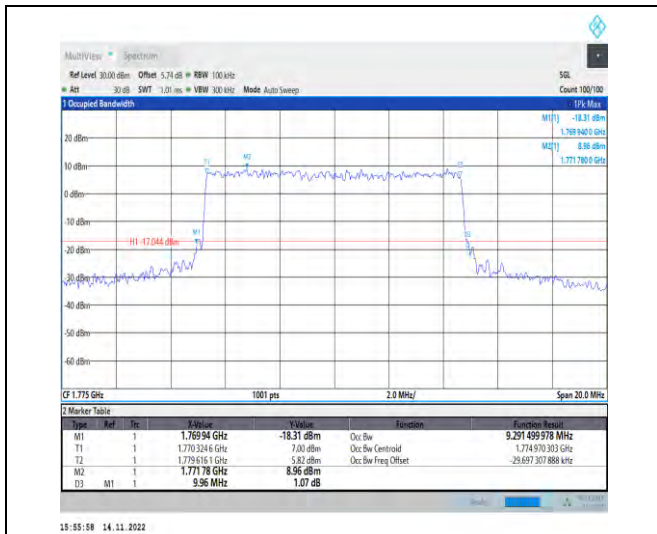


1-N66-PC3-15-10-H-7-CP-16QAM-Outer_Full-52@0-Ant1-9.298-10.080-≤10-PASS



Unless otherwise agreed in writing, this document is issued by the Company subject to its General Conditions of Service printed overleaf, available on request or accessible at <http://www.sgs.com/en/Terms-and-Conditions.aspx> and, for electronic format documents, subject to Terms and Conditions for Electronic Documents at <http://www.sgs.com/en/Terms-and-Conditions/Terms-e-Documents.aspx>. Attention is drawn to the limitation of liability, indemnification and jurisdiction issues defined therein. Any holder of this document is advised that information contained hereon reflects the Company's findings at the time of its intervention only and within the limits of Client's instructions, if any. The Company's sole responsibility is to its Client and this document does not exonerate parties to a transaction from exercising all their rights and obligations under the transaction documents. This document cannot be reproduced except in full, without prior written approval of the Company. Any unauthorized alteration, forgery or falsification of the content or appearance of this document is unlawful and offenders may be prosecuted to the fullest extent of the law. Unless otherwise stated the results shown in this test report refer only to the sample(s) tested and such sample(s) are retained for 30 days only.

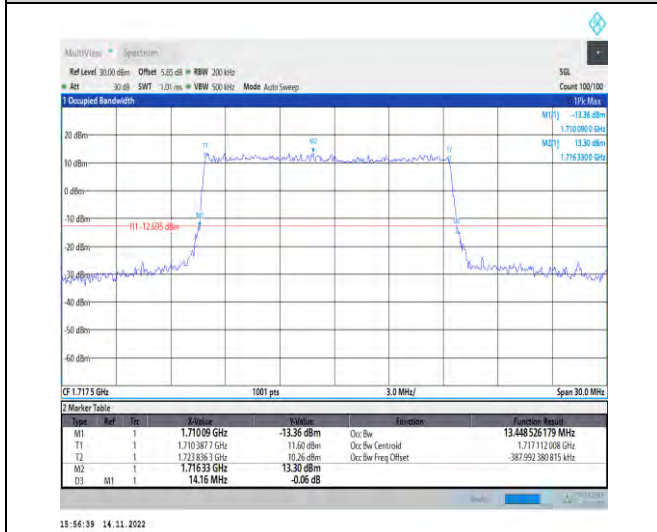
Attention: To check the authenticity of testing/inspection report & certificate, please contact us at telephone: (86-755) 8307 1443, or email: CN.Doccheck@sgs.com
 South of No. 6 Plant, No. 1, Runsheng Road, Suzhou Industrial Park, Suzhou Area, China (Jiangsu) Pilot Free Trade Zone 215000 t (86-512) 62992980 www.sgs.com.cn
 中国·苏州·中国(江苏)自由贸易试验区苏州片区苏州工业园区润胜路1号6号厂房南楼 邮编: 215000 t (86-512) 62992980 sgs.china@sgs.com



1-N66-PC3-15-10-H-8-CP-64QAM-Outer_Full-52@0-Ant1-9.291-9.960-≤10-PASS



1-N66-PC3-15-10-H-9-CP-256QAM-Outer_Full-52@0-Ant1-9.296-10.100-≤10-PASS



1-N66-PC3-15-15-L-1-DFT-QPSK-Outer_Full-75@0-Ant1-13.449-14.160-≤15-PASS

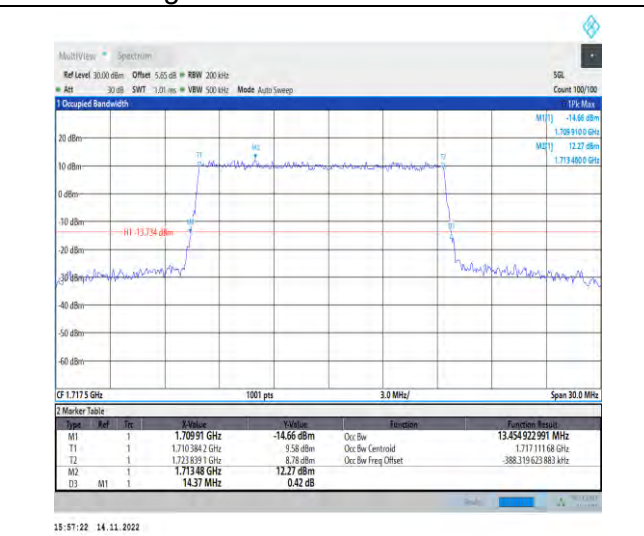
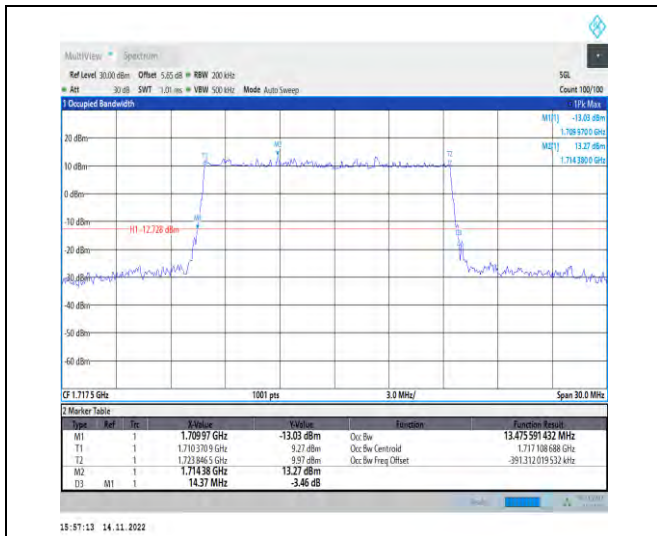


1-N66-PC3-15-15-L-2-DFT-PI2BPSK-Outer_Full-75@0-Ant1-13.432-14.250-≤15-PASS



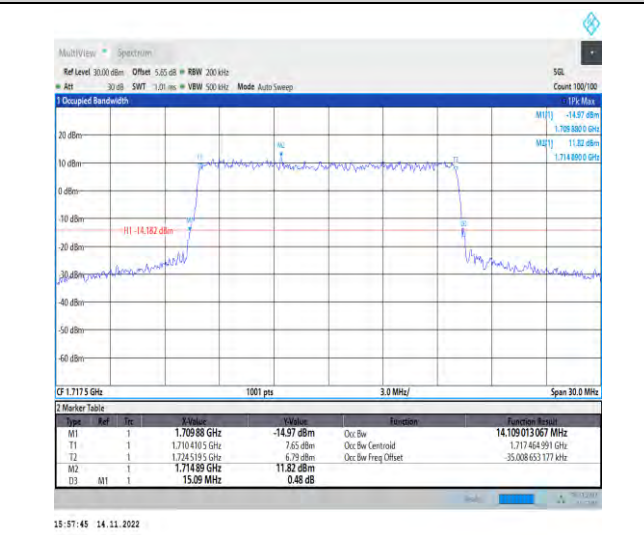
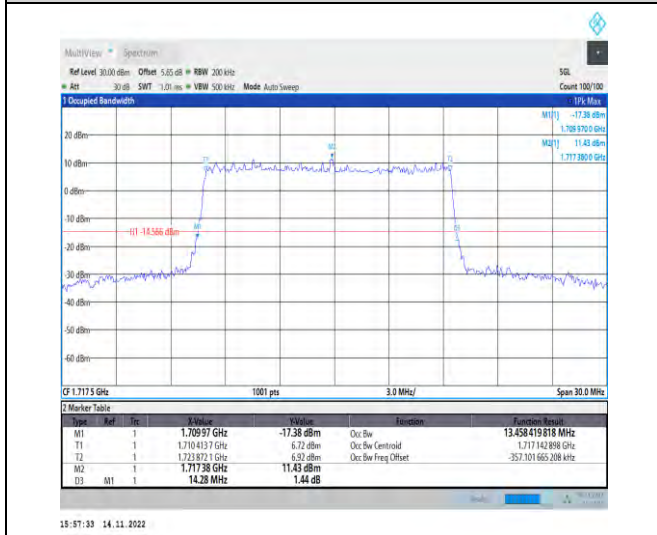
Unless otherwise agreed in writing, this document is issued by the Company subject to its General Conditions of Service printed overleaf, available on request or accessible at <http://www.sgs.com/en/Terms-and-Conditions.aspx> and, for electronic format documents, subject to Terms and Conditions for Electronic Documents at <http://www.sgs.com/en/Terms-and-Conditions/Terms-e-Documents.aspx>. Attention is drawn to the limitation of liability, indemnification and jurisdiction issues defined therein. Any holder of this document is advised that information contained hereon reflects the Company's findings at the time of its intervention only and within the limits of Client's instructions, if any. The Company's sole responsibility is to its Client and this document does not exonerate parties to a transaction from exercising all their rights and obligations under the transaction documents. This document cannot be reproduced except in full, without prior written approval of the Company. Any unauthorized alteration, forgery or falsification of the content or appearance of this document is unlawful and offenders may be prosecuted to the fullest extent of the law. Unless otherwise stated the results shown in this test report refer only to the sample(s) tested and such sample(s) are retained for 30 days only.

Attention: To check the authenticity of testing/inspection report & certificate, please contact us at telephone: (86-755) 8307 1443, or email: CN.Doccheck@sgs.com
 South of No. 6 Plant, No. 1, Runsheng Road, Suzhou Industrial Park, Suzhou Area, China (Jiangsu) Pkx Free Trade Zone 215000 t (86-512) 62992980 www.sgs.com.cn
 中国·苏州·中国(江苏)自由贸易试验区苏州片区苏州工业园区润胜路1号的6号厂房南楼 邮编: 215000 t (86-512) 62992980 sgs.china@sgs.com



1-N66-PC3-15-15-L-3-DFT-16QAM-Outer_Full-75@0-Ant1-13.476-14.370≤15-PASS

1-N66-PC3-15-15-L-4-DFT-64QAM-Outer_Full-75@0-Ant1-13.455-14.370≤15-PASS



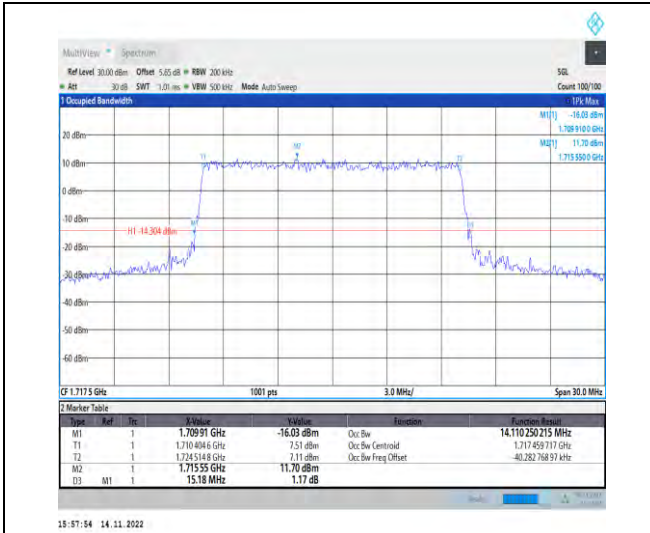
1-N66-PC3-15-15-L-5-DFT-256QAM-Outer_Full-75@0-Ant1-13.458-14.280≤15-PASS

1-N66-PC3-15-15-L-6-CP-QPSK-Outer_Full-79@0-Ant1-14.109-15.090≤15-PASS

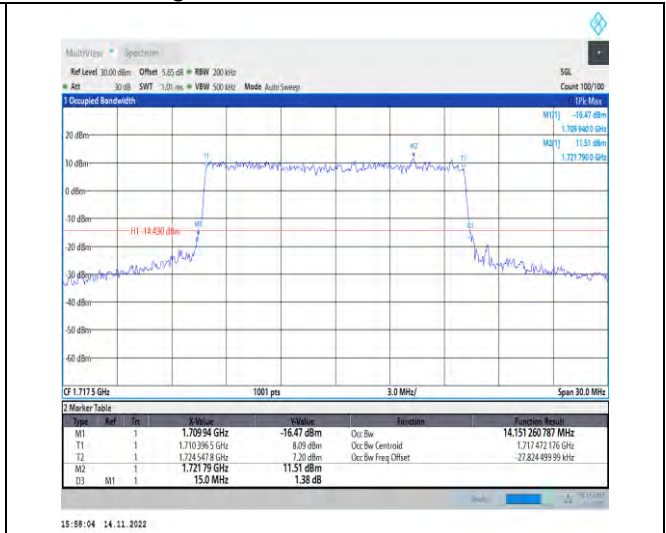


Unless otherwise agreed in writing, this document is issued by the Company subject to its General Conditions of Service printed overleaf, available on request or accessible at <http://www.sgs.com/en/Terms-and-Conditions.aspx> and, for electronic format documents, subject to Terms and Conditions for Electronic Documents at <http://www.sgs.com/en/Terms-and-Conditions/Terms-e-Documents.aspx>. Attention is drawn to the limitation of liability, indemnification and jurisdiction issues defined therein. Any holder of this document is advised that information contained hereon reflects the Company's findings at the time of its intervention only and within the limits of Client's instructions, if any. The Company's sole responsibility is to its Client and this document does not exonerate parties to a transaction from exercising all their rights and obligations under the transaction documents. This document cannot be reproduced except in full, without prior written approval of the Company. Any unauthorized alteration, forgery or falsification of the content or appearance of this document is unlawful and offenders may be prosecuted to the fullest extent of the law. Unless otherwise stated the results shown in this test report refer only to the sample(s) tested and such sample(s) are retained for 30 days only.

Attention: To check the authenticity of testing/inspection report & certificate, please contact us at telephone: (86-755) 8307 1443, or email: CN.Doccheck@sgs.com
 South of No. 6 Plant, No. 1, Runsheng Road, Suzhou Industrial Park, Suzhou Area, China (Jiangsu) Pkx Free Trade Zone 215000 t (86-512) 62992980 www.sgs.com.cn
 中国·苏州·中国 (江苏) 自由贸易试验区苏州片区工业园区润胜路1号的6号厂房南楼 邮编: 215000 t (86-512) 62992980 sgs.china@sgs.com



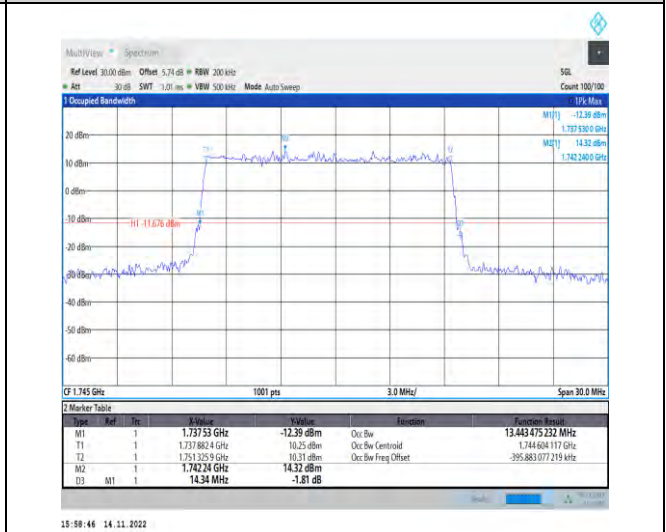
1-N66-PC3-15-15-L-7-CP-16QAM-Outer_Full-79@0-Ant1-14.11-15.180-≤15-PASS



1-N66-PC3-15-15-L-8-CP-64QAM-Outer_Full-79@0-Ant1-14.151-15.000-≤15-PASS



1-N66-PC3-15-15-L-9-CP-256QAM-Outer_Full-79@0-Ant1-14.102-15.030-≤15-PASS

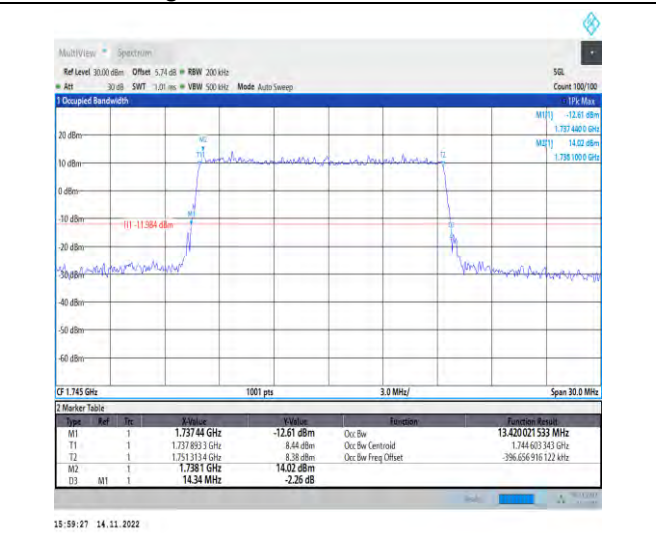
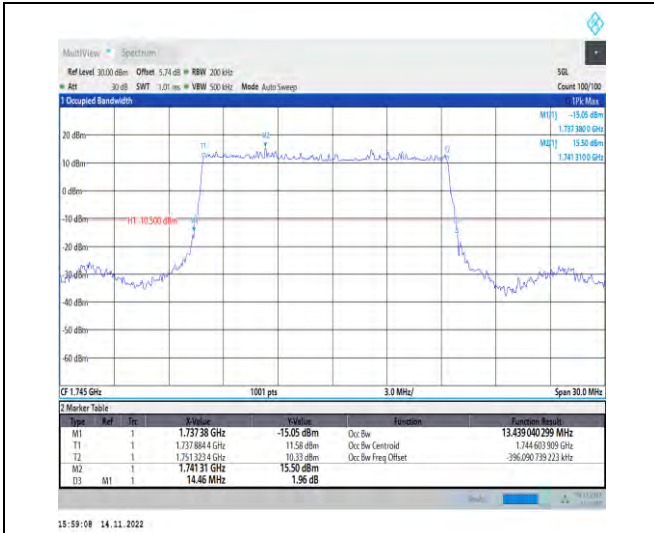


1-N66-PC3-15-15-M-1-DFT-QPSK-Outer_Full-75@0-Ant1-13.443-14.340-≤15-PASS



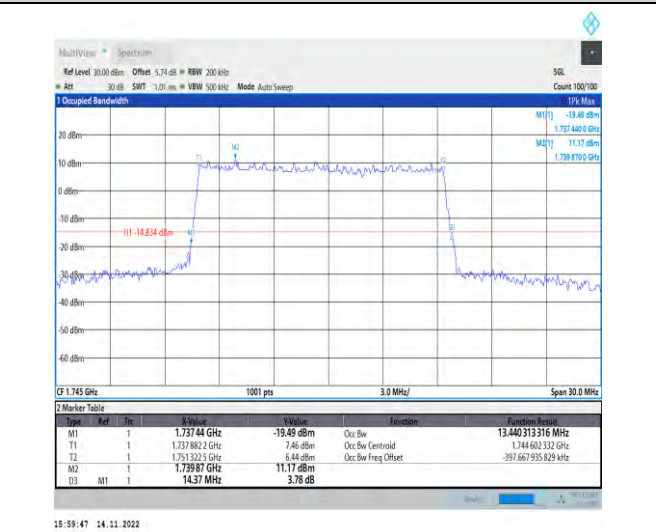
Unless otherwise agreed in writing, this document is issued by the Company subject to its General Conditions of Service printed overleaf, available on request or accessible at <http://www.sgs.com/en/Terms-and-Conditions.aspx> and, for electronic format documents, subject to Terms and Conditions for Electronic Documents at <http://www.sgs.com/en/Terms-and-Conditions/Terms-e-Documents.aspx>. Attention is drawn to the limitation of liability, indemnification and jurisdiction issues defined therein. Any holder of this document is advised that information contained hereon reflects the Company's findings at the time of its intervention only and within the limits of Client's instructions, if any. The Company's sole responsibility is to its Client and this document does not exonerate parties to a transaction from exercising all their rights and obligations under the transaction documents. This document cannot be reproduced except in full, without prior written approval of the Company. Any unauthorized alteration, forgery or falsification of the content or appearance of this document is unlawful and offenders may be prosecuted to the fullest extent of the law. Unless otherwise stated the results shown in this test report refer only to the sample(s) tested and such sample(s) are retained for 30 days only.

Attention: To check the authenticity of testing/inspection report & certificate, please contact us at telephone: (86-755) 8307 1443, or email: CN.Doccheck@sgs.com
 South of No. 6 Plant, No. 1, Runsheng Road, Suzhou Industrial Park, Suzhou Area, China (Jiangsu) Pkx Free Trade Zone 215000 t (86-512) 62992980 www.sgs.com.cn
 中国·苏州·中国(江苏)自由贸易试验区苏州片区苏州工业园区润胜路1号的6号厂房南楼 邮编: 215000 t (86-512) 62992980 sgs.china@sgs.com



1-N66-PC3-15-15-M-2-DFT-PI2BPSK-Outer_Full-75 @0-Ant1-13.439-14.460-≤15-PASS

1-N66-PC3-15-15-M-3-DFT-16QAM-Outer_Full-75 @0-Ant1-13.42-14.340-≤15-PASS



1-N66-PC3-15-15-M-4-DFT-64QAM-Outer_Full-75 @0-Ant1-13.443-14.280-≤15-PASS

1-N66-PC3-15-15-M-5-DFT-256QAM-Outer_Full-75 @0-Ant1-13.44-14.370-≤15-PASS



Unless otherwise agreed in writing, this document is issued by the Company subject to its General Conditions of Service printed overleaf, available on request or accessible at <http://www.sgs.com/en/Terms-and-Conditions.aspx> and, for electronic format documents, subject to Terms and Conditions for Electronic Documents at <http://www.sgs.com/en/Terms-and-Conditions/Terms-e-Documents.aspx>. Attention is drawn to the limitation of liability, indemnification and jurisdiction issues defined therein. Any holder of this document is advised that information contained hereon reflects the Company's findings at the time of its intervention only and within the limits of Client's instructions, if any. The Company's sole responsibility is to its Client and this document does not exonerate parties to a transaction from exercising all their rights and obligations under the transaction documents. This document cannot be reproduced except in full, without prior written approval of the Company. Any unauthorized alteration, forgery or falsification of the content or appearance of this document is unlawful and offenders may be prosecuted to the fullest extent of the law. Unless otherwise stated the results shown in this test report refer only to the sample(s) tested and such sample(s) are retained for 30 days only.

Attention: To check the authenticity of testing/inspection report & certificate, please contact us at telephone: (86-755) 8307 1443, or email: CN.Doccheck@sgs.com
 South of No. 6 Plant, No. 1, Runsheng Road, Suzhou Industrial Park, Suzhou Area, China (Jiangsu) Pkx Free Trade Zone 215000 t (86-512) 62992980 www.sgs.com.cn
 中国·苏州·中国(江苏)自由贸易试验区苏州片区工业园区润胜路1号6号厂房南楼 邮编: 215000 t (86-512) 62992980 sgs.china@sgs.com