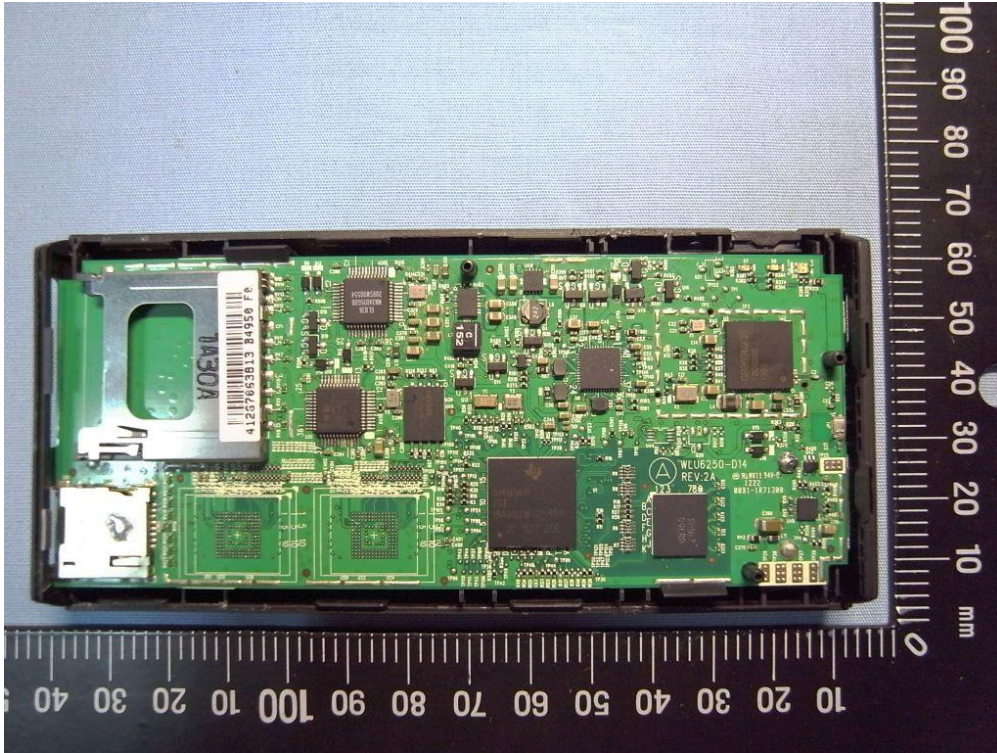
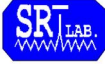


**Spectrum Research & Testing Lab., Inc.**  
No. 101-10, Ling 8, Shan-Tong Li, Chung-Li  
City, Taoyuan, Taiwan  
Taiwan, R.O.C.

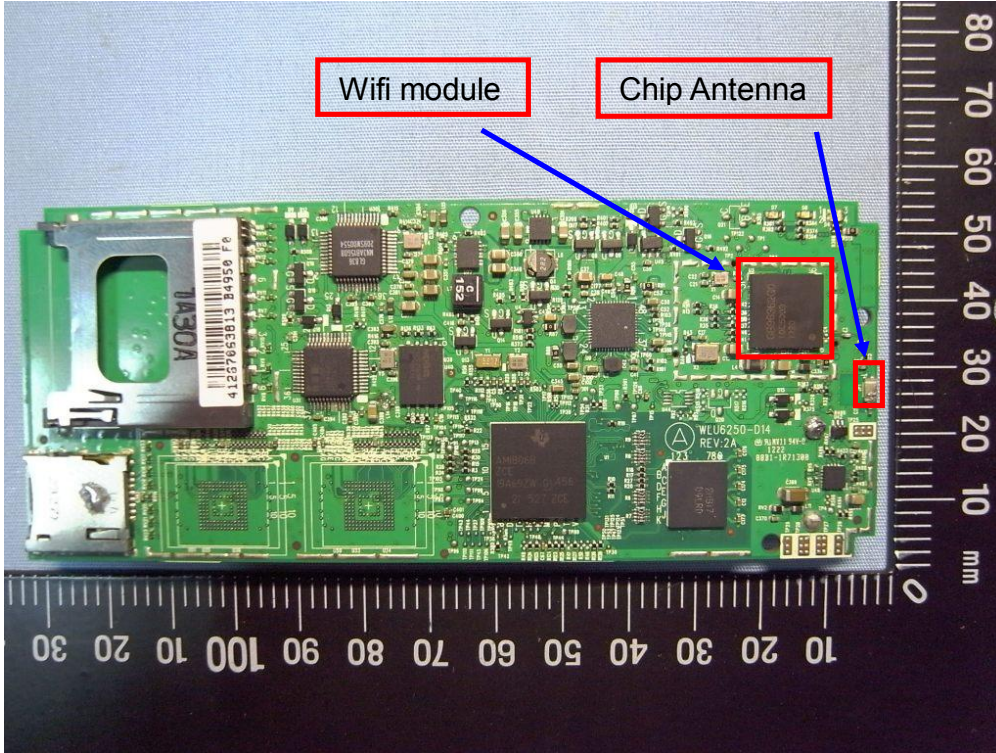
**TOP inside**



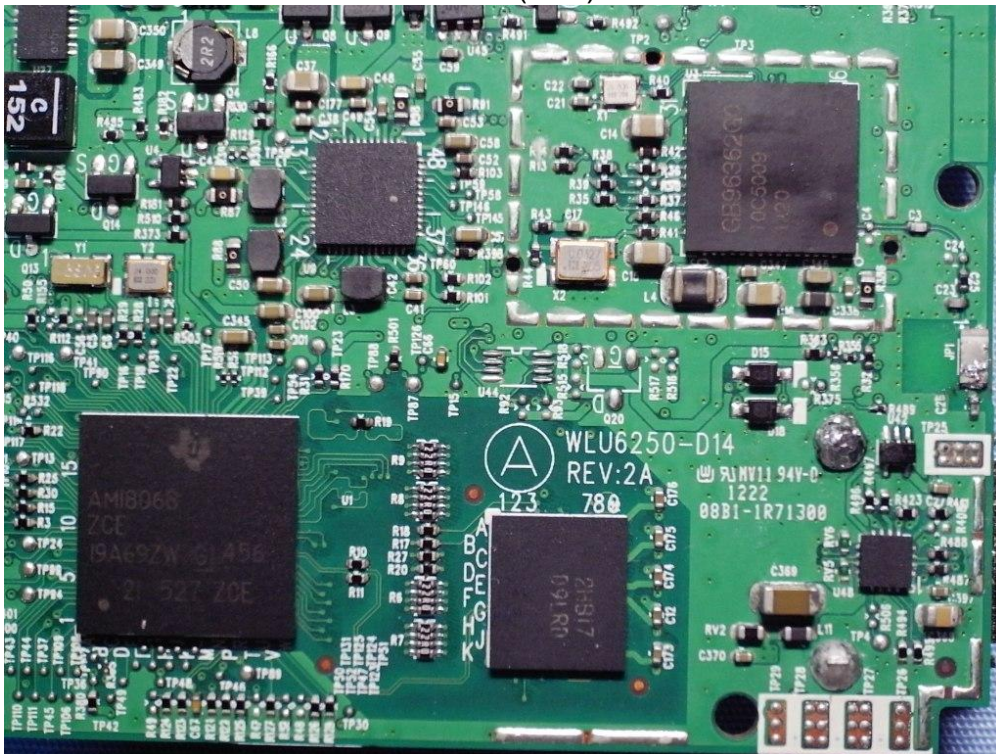


Spectrum Research & Testing Lab., Inc.  
No. 101-10, Ling 8, Shan-Tong Li, Chung-Li  
City, Taoyuan, Taiwan  
Taiwan, R.O.C.

### PCB-F



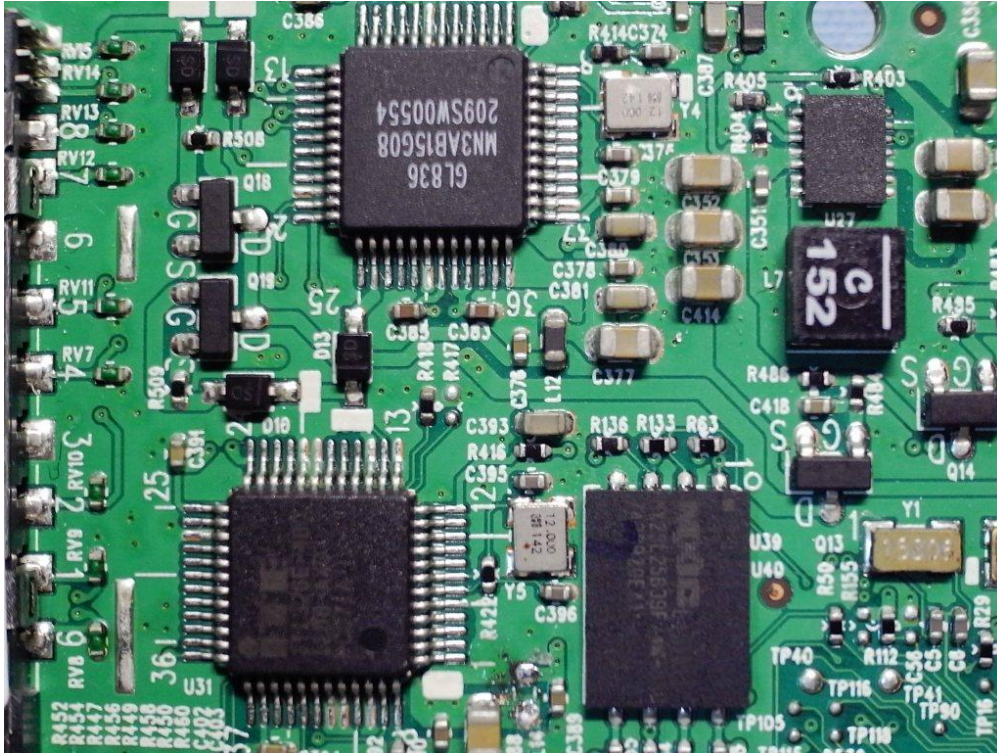
### PCB-F (IC-1)





**Spectrum Research & Testing Lab., Inc.**  
No. 101-10, Ling 8, Shan-Tong Li, Chung-Li  
City, Taoyuan, Taiwan  
Taiwan, R.O.C.

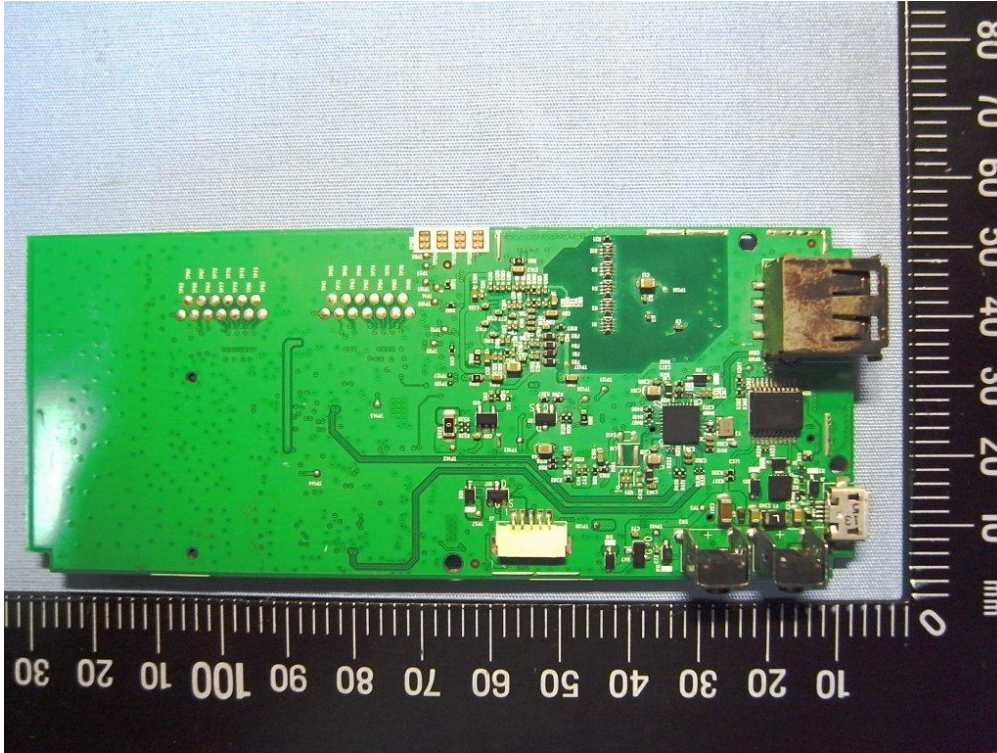
**PCB-F (IC-2)**



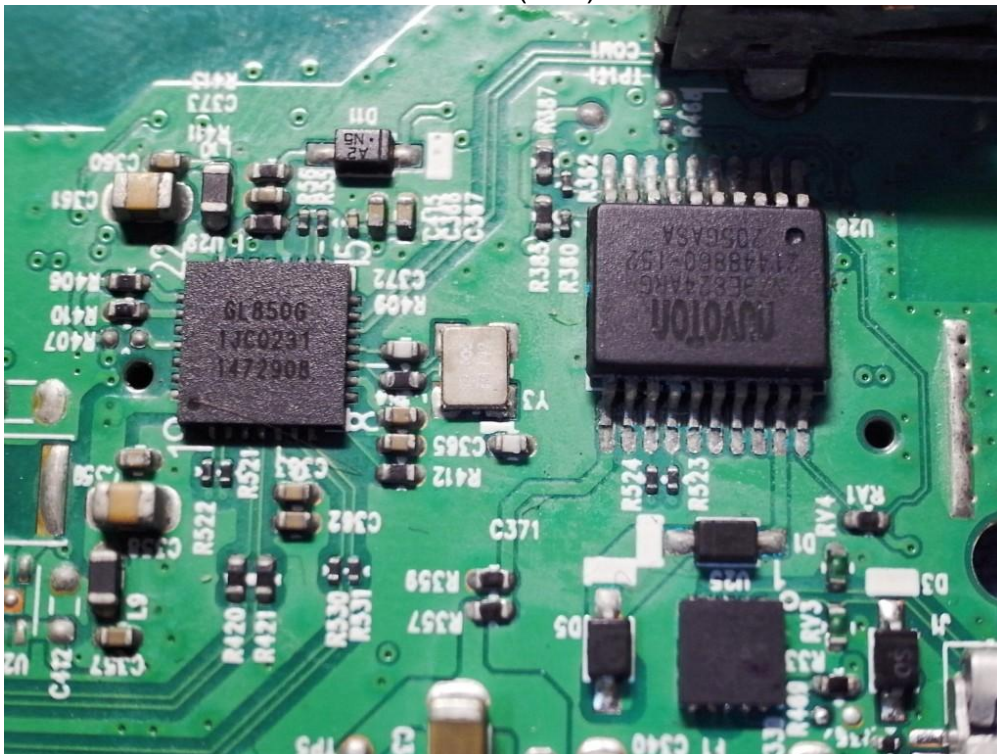


**Spectrum Research & Testing Lab., Inc.**  
No. 101-10, Ling 8, Shan-Tong Li, Chung-Li  
City, Taoyuan, Taiwan  
Taiwan, R.O.C.

### PCB-B



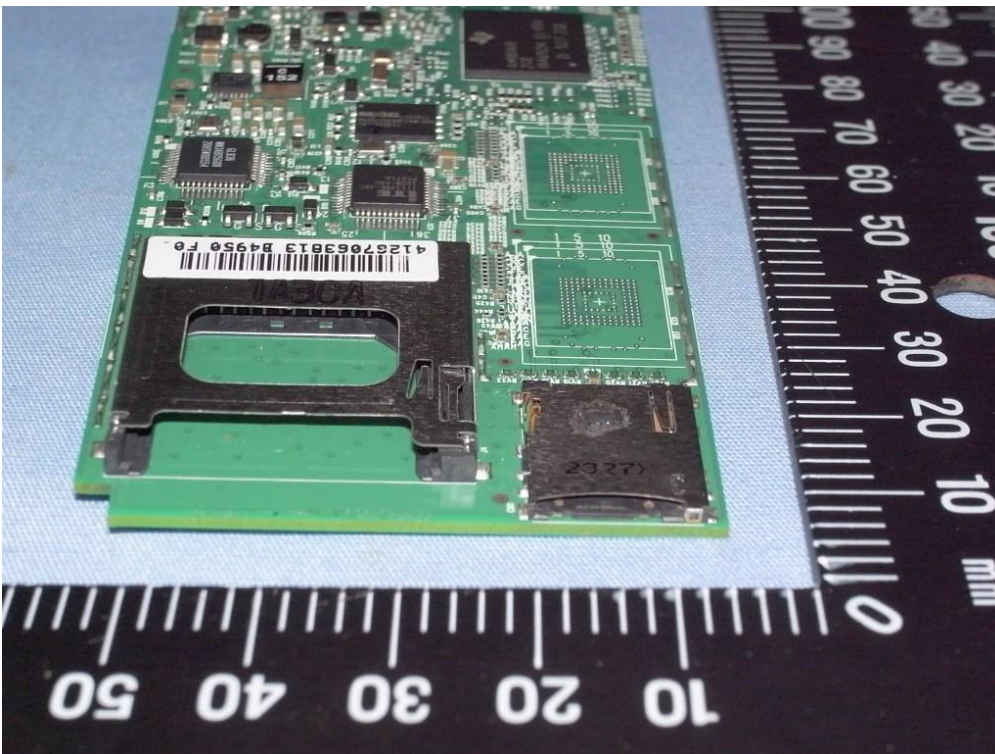
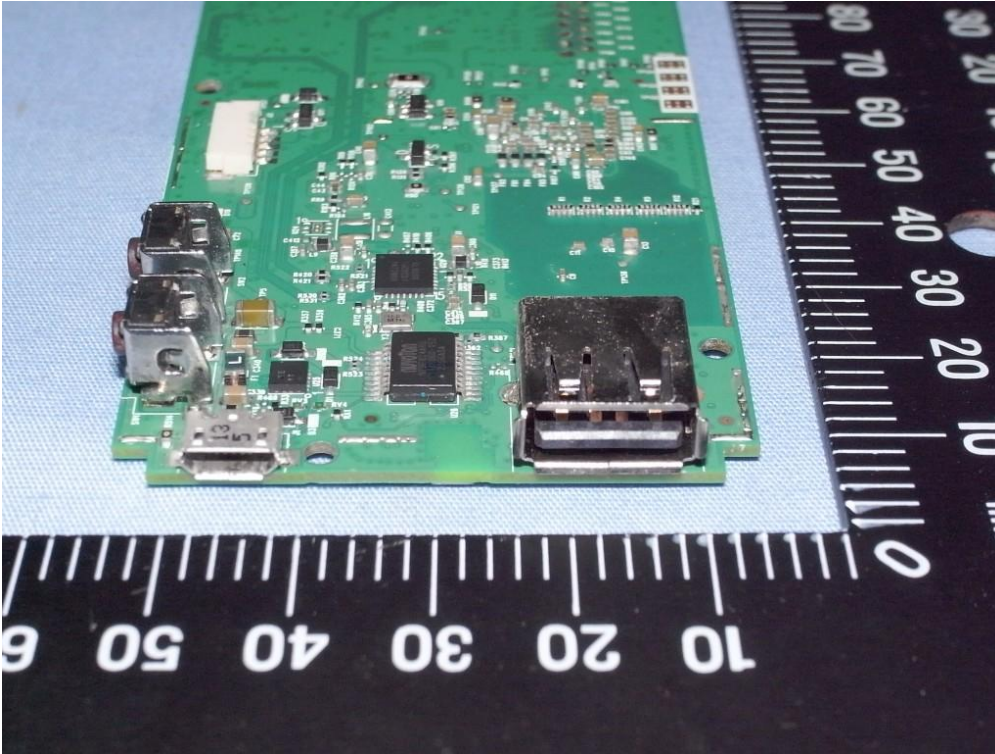
### PCB-F (IC-1)

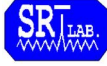




Spectrum Research & Testing Lab., Inc.  
No. 101-10, Ling 8, Shan-Tong Li, Chung-Li  
City, Taoyuan, Taiwan  
Taiwan, R.O.C.

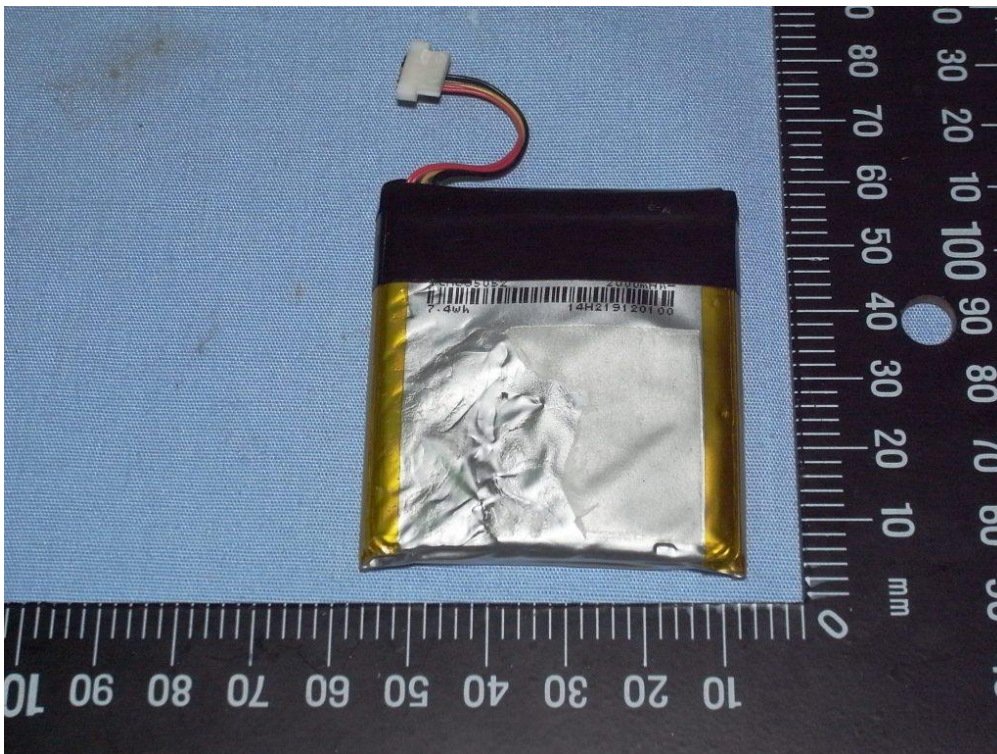
### Port





**Spectrum Research & Testing Lab., Inc.**  
No. 101-10, Ling 8, Shan-Tong Li, Chung-Li  
City, Taoyuan, Taiwan  
Taiwan, R.O.C.

### Battery





**Spectrum Research & Testing Lab., Inc.**  
No. 101-10, Ling 8, Shan-Tong Li, Chung-Li  
City, Taoyuan, Taiwan  
Taiwan, R.O.C.

### CASE

