

CETECOM™

Test report no.: 1-9730/15-01-01_AnnexB

Annex B

CETECOM™

CETECOM ICT Services
consulting - testing - certification >>>

This test report annex is electronically signed and valid without handwriting signature. For verification of the electronic signatures, the public keys can be requested at the testing laboratory.

Test report annex authorised:

Andreas Luckenbill
Lab Manager
Radio Communications & EMC

Internal photos of the EUT

Photo 1: separation of main body and radiometric unit



Photo 2: radiometric unit without objective



Photo 3: connection cables between main pc board and radiometric unit



Photo 4: front view body without radiometric unit



Photo 5: view on the battery compartment



Photo 6: Top view on the camera body



Photo 7: Top of the camera with the PCB for the buttons and joystick



Photo 8: Top view – GPS antenna, GPS module and BT/WLAN antenna



Photo 9: GPS-antenna, GPS module and BT/WLAN antenna

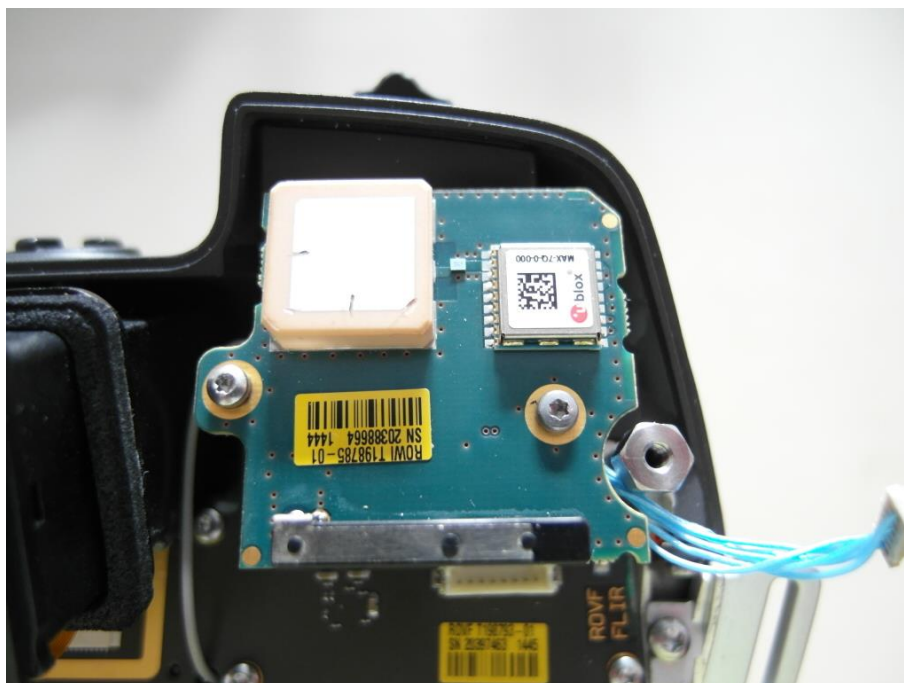


Photo 10: Antenna module with GPS chip



Photo 11: BT/WLAN antenna



Photo 12: BT/WLAN RF connector (UFL) on antenna board

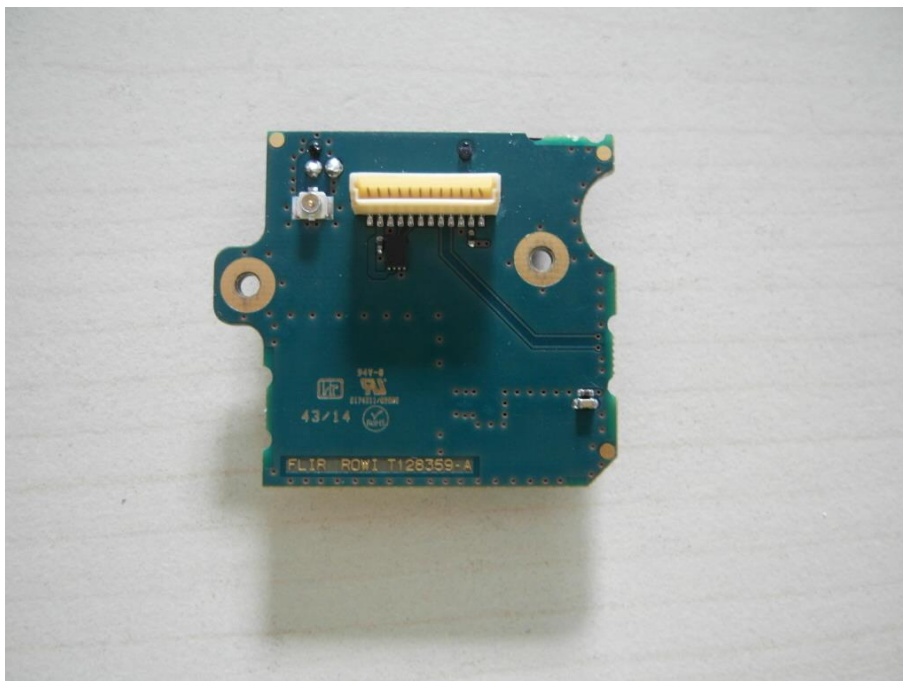


Photo 13: Antenna board



Photo 14: BT/WLAN antenna



Photo 15: UFL BT/WLAN antenna connector

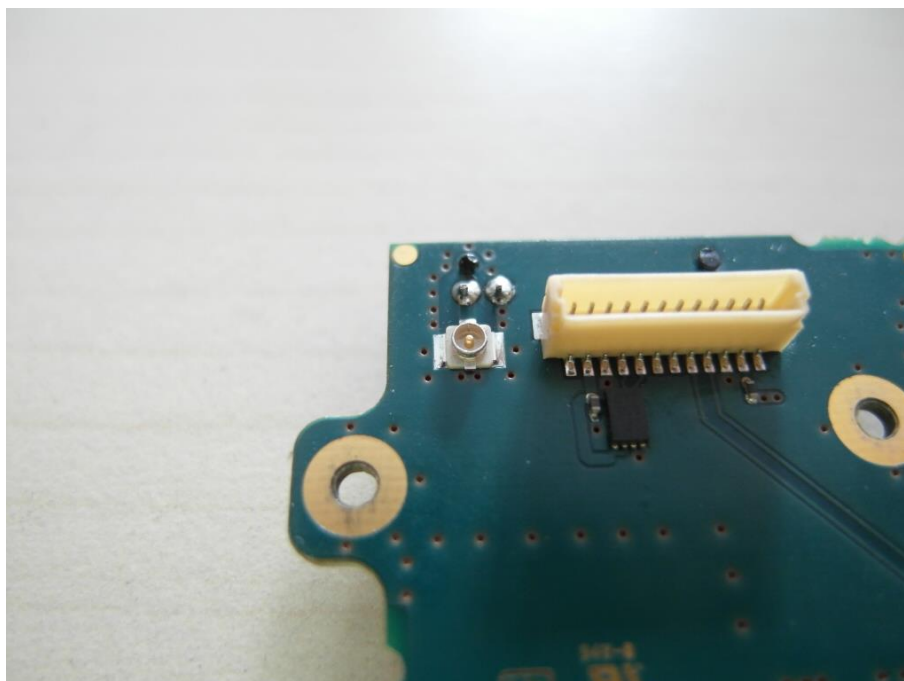


Photo 16: connector board between view finder and computer board

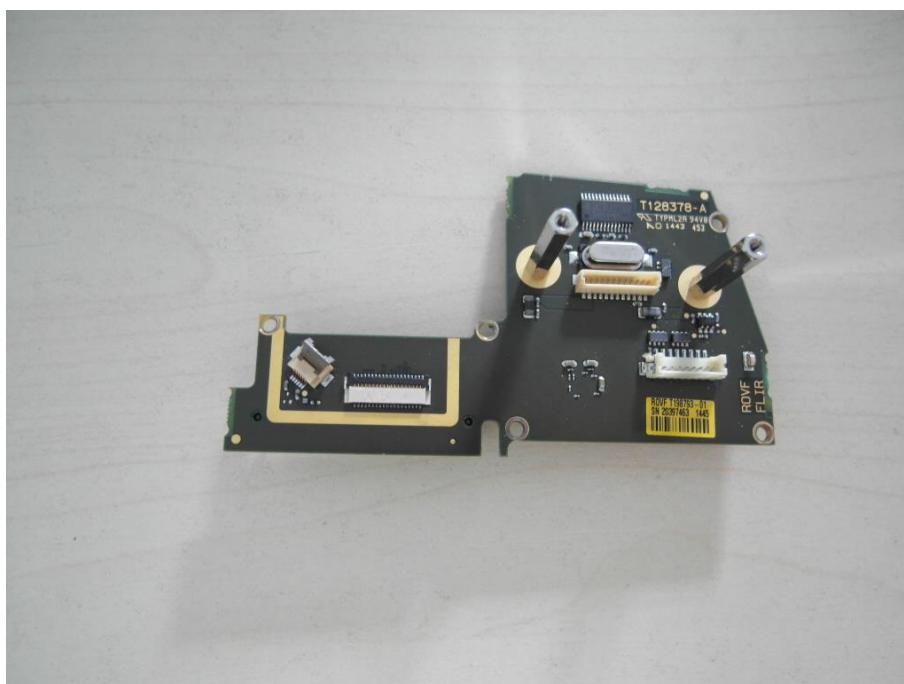


Photo 17: connector board between view finder and computer board



Photo 18: body part with battery connector board and view finder



Photo 19: View finder and the battery connector board



Photo 20: open main body



Photo 21: UFL RF cable thru the housing



Photo 22: UFL connector at RF cable



Photo 23: computer board with cable to battery connector board



Photo 24: computer board



Photo 25: computer board



Photo 26: digi main module including RF part and RF cable



Photo 27: digi main module including RF part and UFL connector



Photo 28: Antenna cable

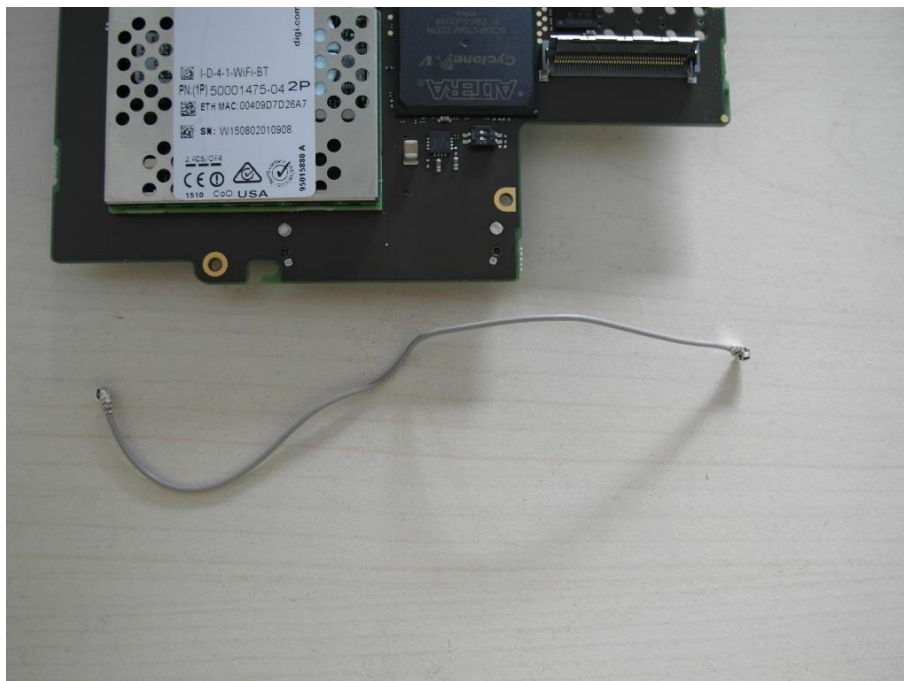


Photo 29: Main PC board with antenna cable for BT/WLAN



Photo 30: radiometric unit housing

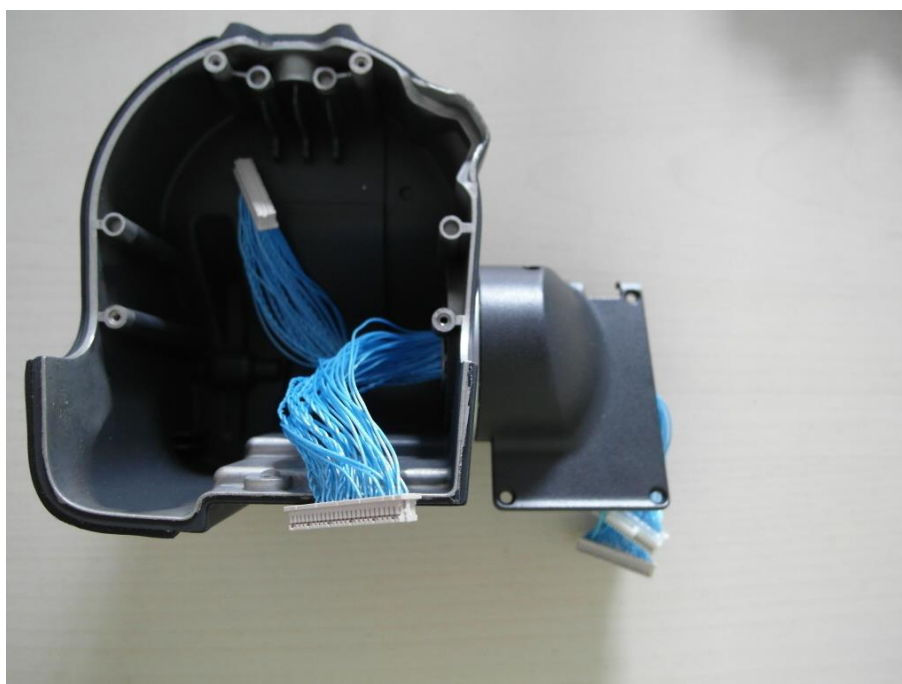


Photo 31: radiometric unit

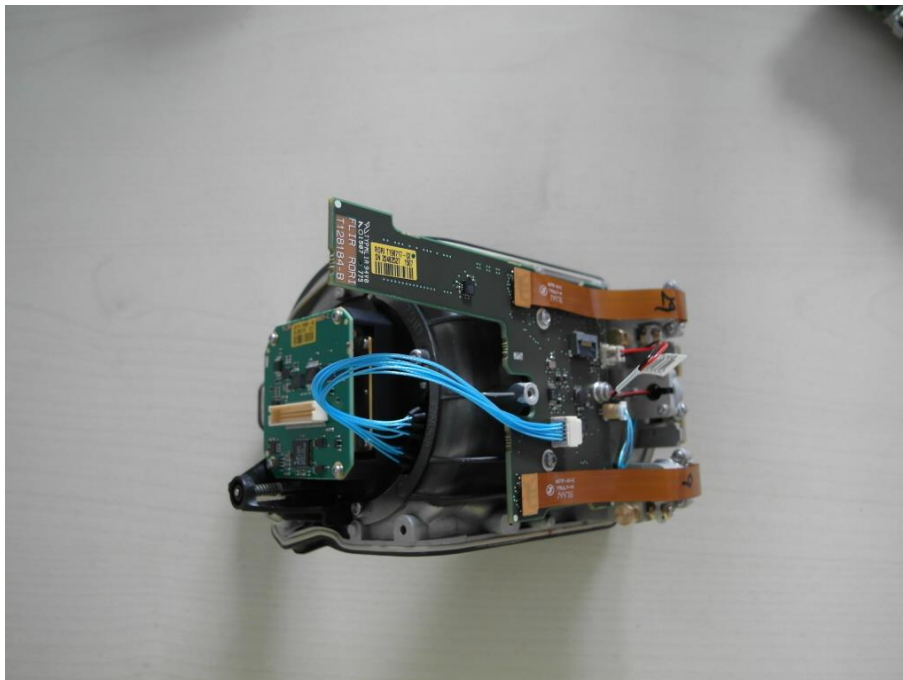


Photo 32: radiometric unit

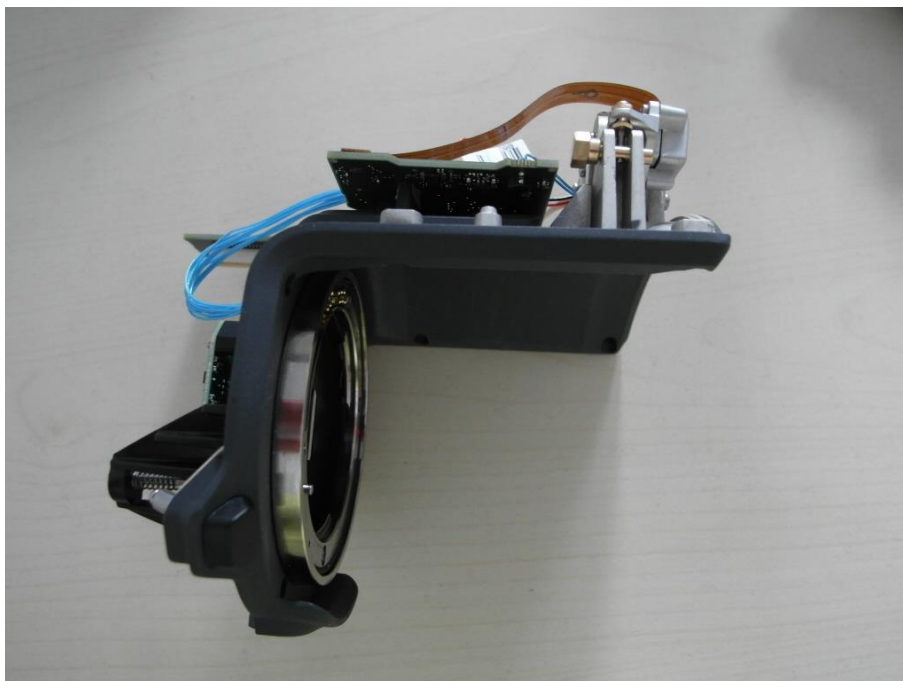
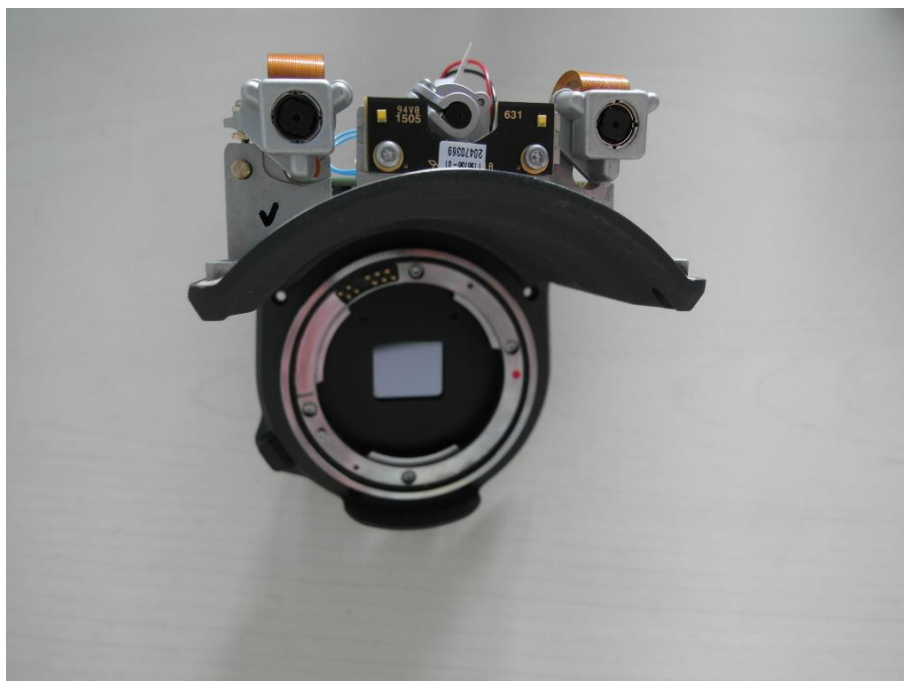


Photo 33: radiometric unit



Document history

Version	Applied changes	Date of release
	Initial release	2015-07-20