

CETECOM ICT Services is now

CTC | **advanced**
member of RWTÜV group

TEST REPORT

Test Report No.: 1-1390/16-01-08-A



Deutsche
Akkreditierungsstelle
D-PL-12076-01-01

Testing Laboratory

CTC advanced GmbH

Untertürkheimer Straße 6 – 10
66117 Saarbrücken/Germany

Phone: + 49 681 5 98 - 0

Fax: + 49 681 5 98 - 9075

Internet: <http://www.ctcadvanced.com>

e-mail: mail@ctcadvanced.com

Accredited Test Laboratory:

The testing laboratory (area of testing) is accredited according to DIN EN ISO/IEC 17025 (2005) by the Deutsche Akkreditierungsstelle GmbH (DAkkS)

The accreditation is valid for the scope of testing procedures as stated in the accreditation certificate with the registration number: D-PL-12076-01-01

Applicant

FLIR Systems AB

Antennvägen 6
187 66 Täby/SWEDEN

Phone: ---

Contact: Göran Skedung

e-mail: goran.skedung@flir.se

Phone: +46 87 53 27 59

Fax: ---

Manufacturer

FLIR Systems AB

Antennvägen 6
187 66 Täby/SWEDEN

Test Standard/s

IEEE 1528-2013

Recommended Practice for Determining the Peak Spatial-Average Specific Absorption Rate (SAR) in the Human Head from Wireless Communications Devices: Measurement Techniques
Radio Frequency Exposure Compliance of Radiocommunication Apparatus (All Frequency Bands)

RSS-102 Issue 5

For further applied test standards please refer to section 3 of this test report.

Test Item

Kind of test item: Infrared Camera
Device type: portable device
Model name: **FLIR E7850**
S/N serial number: Rad. 78100214 Cond. 78100204
FCC-ID: ZLV-FLIRE7850
IC: 5306A-FLIRE7850
Hardware status: 1
Software status: 0.6.2 (Firmware - 8.9.0.1.55)
Frequency: see technical details
Antenna: integrated antenna
Battery option: Li-ion Battery Pack 3.65Vdc, 5.7Ah
Accessories: ---
Test sample status: identical prototype
Exposure category: general population / uncontrolled environment

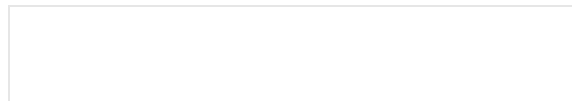
This test report is electronically signed and valid without handwriting signature. For verification of the electronic signatures, the public keys can be requested at the testing laboratory.

Test Report authorised:



Alexander Hnatovskiy
Lab Manager
Radio Communications & EMC

Test performed:



Marco Scigliano
Testing Manager
Radio Communications & EMC

1 Table of contents

1	Table of contents	2
2	General information	3
2.1	Notes and disclaimer.....	3
2.2	Application details.....	3
2.3	Statement of compliance	3
2.4	Technical details.....	4
2.5	Transmitter and Antenna Operating Configurations	4
3	Test standards/ procedures references	5
3.1	RF exposure limits.....	6
4	Summary of Measurement Results	7
5	Test Environment	7
6	Test Set-up	8
6.1	Measurement system	8
6.1.1	System Description	8
6.1.2	Test environment	9
6.1.3	Probe description	9
6.1.4	Phantom description	10
6.1.5	Device holder description	11
6.1.6	Scanning procedure.....	12
6.1.7	Spatial Peak SAR Evaluation	13
6.1.8	Data Storage and Evaluation.....	14
6.1.9	Tissue simulating liquids: dielectric properties	16
6.1.10	Tissue simulating liquids: parameters	16
6.1.11	Measurement uncertainty evaluation for SAR test.....	17
6.1.12	Measurement uncertainty evaluation for System Check	22
6.1.13	System check.....	24
6.1.14	System check procedure	24
6.1.15	System validation.....	25
7	Detailed Test Results	26
7.1	Conducted power measurements	26
7.1.1	Conducted power measurements WLAN 2450 MHz.....	26
7.1.2	Conducted power measurements WLAN 5 GHz	26
7.1.1	Conducted average power measurements Bluetooth 2.4 GHz	27
7.1.1	Conducted power Bluetooth LE 2.4 GHz.....	Fehler! Textmarke nicht definiert.
7.2	SAR test results	27
7.2.1	General description of test procedures.....	27
7.2.2	Results overview.....	28
7.2.3	Multiple Transmitter Information	29
8	Test equipment and ancillaries used for tests	30
9	Observations	30
Annex A:	System performance check	31
Annex B:	DASY5 measurement results	33
Annex B.1:	WLAN 2450 MHz	33
Annex B.2:	WLAN 5GHz.....	35
Annex B.3:	BLUETOOTH 2450MHz.....	36
Annex B.4:	Liquid depth	37
Annex C:	Photo documentation	38
Annex D:	Calibration parameters	38
Annex E:	RF Technical Brief Cover Sheet acc. to RSS-102 Annex A	39

Annex A.1: Declaration of RF Exposure Compliance Annex B40
Annex B: Document History41
Annex C: Further Information41

2 General information

2.1 Notes and disclaimer

The test results of this test report relate exclusively to the test item specified in this test report. CTC advanced GmbH does not assume responsibility for any conclusions and generalisations drawn from the test results with regard to other specimens or samples of the type of the equipment represented by the test item. The test report may only be reproduced or published in full. Reproduction or publication of extracts from the report requires the prior written approval of CTC advanced GmbH.

This test report is electronically signed and valid without handwriting signature. For verification of the electronic signatures, the public keys can be requested at the testing laboratory.

The testing service provided by CTC advanced GmbH has been rendered under the current "General Terms and Conditions for CTC advanced GmbH".

CTC advanced GmbH will not be liable for any loss or damage resulting from false, inaccurate, inappropriate or incomplete product information provided by the customer.

Under no circumstances does the CTC advanced GmbH test report include any endorsement or warranty regarding the functionality, quality or performance of any other product or service provided.

Under no circumstances does the CTC advanced GmbH test report include or imply any product or service warranties from CTC advanced GmbH, including, without limitation, any implied warranties of merchantability, fitness for purpose, or non-infringement, all of which are expressly disclaimed by CTC advanced GmbH.

All rights and remedies regarding vendor's products and services for which CTC advanced GmbH has prepared this test report shall be provided by the party offering such products or services and not by CTC advanced GmbH. In no case this test report can be considered as a Letter of Approval.

2.2 Application details

Date of receipt of order:	2016-11-02
Date of receipt of test item:	2016-11-15
Start of test:	2016-11-15
End of test:	2016-11-17
Person(s) present during the test:	

2.3 Statement of compliance

The SAR values found for the FLIR E7850 Infrared Camera are below the maximum recommended levels of 1.6 W/Kg as averaged over any 1 g tissue according to the FCC rule §2.1093, the ANSI/IEEE C 95.1:1992, the NCRP Report Number 86 for uncontrolled environment, according to the Health Canada's Safety Code 6 and the Industry Canada Radio Standards Specification RSS-102 for General Population/Uncontrolled exposure.

2.4 Technical details

Band tested for this test report	Technology	Lowest transmit frequency/MHz	Highest transmit frequency/MHz	Lowest receive Frequency/MHz	Highest receive Frequency/MHz	Kind of modulation	Test channel low	Test channel middle	Test channel high	Maximum output power/cBm
<input checked="" type="checkbox"/>	WLAN 2450 MHz	2412	2462	2412	2462	CCK OFDM	1	6	11	12.8
<input checked="" type="checkbox"/>	WLAN 5200 GHz	5180	5240	5180	5240	OFDM	36	40	48	12.8
<input checked="" type="checkbox"/>	BT classic	2402	2480	2402	2480	GFSK	0	39	78	7.4
<input type="checkbox"/>	BT LE	2402	2480	2402	2480	GFSK	0	18	39	3.4

2.5 Transmitter and Antenna Operating Configurations

Simultaneous transmission conditions
WLAN 2.4 GHz + BT/BLE ¹
WLAN 5 GHz + BT/BLE ¹

Table 1: Simultaneous transmission conditions

BLE¹ - Bluetooth low energy

3 Test standards/ procedures references

Test Standard	Version	Test Standard Description
IEEE 1528-2013	2013-06	Recommended Practice for Determining the Peak Spatial-Average Specific Absorption Rate (SAR) in the Human Head from Wireless Communications Devices: Measurement Techniques
RSS-102 Issue 5	2015-03	Radio Frequency Exposure Compliance of Radiocommunication Apparatus (All Frequency Bands)
Canada's Safety Code No. 6	2015-06	Limits of Human Exposure to Radiofrequency Electromagnetic Fields in the Frequency Range from 3 kHz to 300 GHz
IEEE Std. C95-3	2002	IEEE Recommended Practice for the Measurement of Potentially Hazardous Electromagnetic Fields – RF and Microwave
IEEE Std. C95-1	2005	IEEE Standard for Safety Levels with Respect to Human Exposure to Radio Frequency Electromagnetic Fields, 3 kHz to 300 GHz.
IEC 62209-2	2010	Human exposure to radio frequency fields from hand-held and bodymounted wireless communication devices. Human models, instrumentation, and procedures. Procedure to determine the specific absorption rate (SAR) for wireless communication devices used in close proximity to the human body (frequency range of 30 MHz to 6 GHz)
FCC KDBs:		
KDB 865664D01v01	August 7, 2015	FCC OET SAR measurement requirements 100 MHz to 6 GHz
KDB 865664D02v01	October 23, 2015	RF Exposure Compliance Reporting and Documentation Considerations
KDB 447498D01v06	October 23, 2015	Mobile and Portable Devices RF Exposure Procedures and Equipment Authorization Policies
KDB 648474D04v01	October 23, 2015	SAR Evaluation Considerations for Wireless Handsets
KDB 248227D01v02	October 23, 2015	SAR Measurement Procedures for 802.11 a/b/g Transmitters

3.1 RF exposure limits

Human Exposure	Uncontrolled Environment General Population	Controlled Environment Occupational
Spatial Peak SAR* (Brain and Trunk)	1.60 mW/g	8.00 mW/g
Spatial Average SAR** (Whole Body)	0.08 mW/g	0.40 mW/g
Spatial Peak SAR*** (Hands/Feet/Ankle/Wrist)	4.00 mW/g	20.00 mW/g

Table 2: RF exposure limits

The limit applied in this test report is shown in bold letters

Notes:

- * The Spatial Peak value of the SAR averaged over any 1 gram of tissue (defined as a tissue volume in the shape of a cube) and over the appropriate averaging time
- ** The Spatial Average value of the SAR averaged over the whole body.
- *** The Spatial Peak value of the SAR averaged over any 10 grams of tissue (defined as a tissue volume in the shape of a cube) and over the appropriate averaging time.

Uncontrolled Environments are defined as locations where there is the exposure of individuals who have no knowledge or control of their exposure.

Controlled Environments are defined as locations where there is exposure that may be incurred by persons who are aware of the potential for exposure, (i.e. as a result of employment or occupation).

4 Summary of Measurement Results

<input checked="" type="checkbox"/>	No deviations from the technical specifications ascertained	
<input type="checkbox"/>	Deviations from the technical specifications ascertained	
Maximum SAR value reported for 1g (W/kg)		
	DTS	UNII
body worn 0 mm distance	0.568	0.391
collocated situations	ΣSAR evaluation	0.963

5 Test Environment

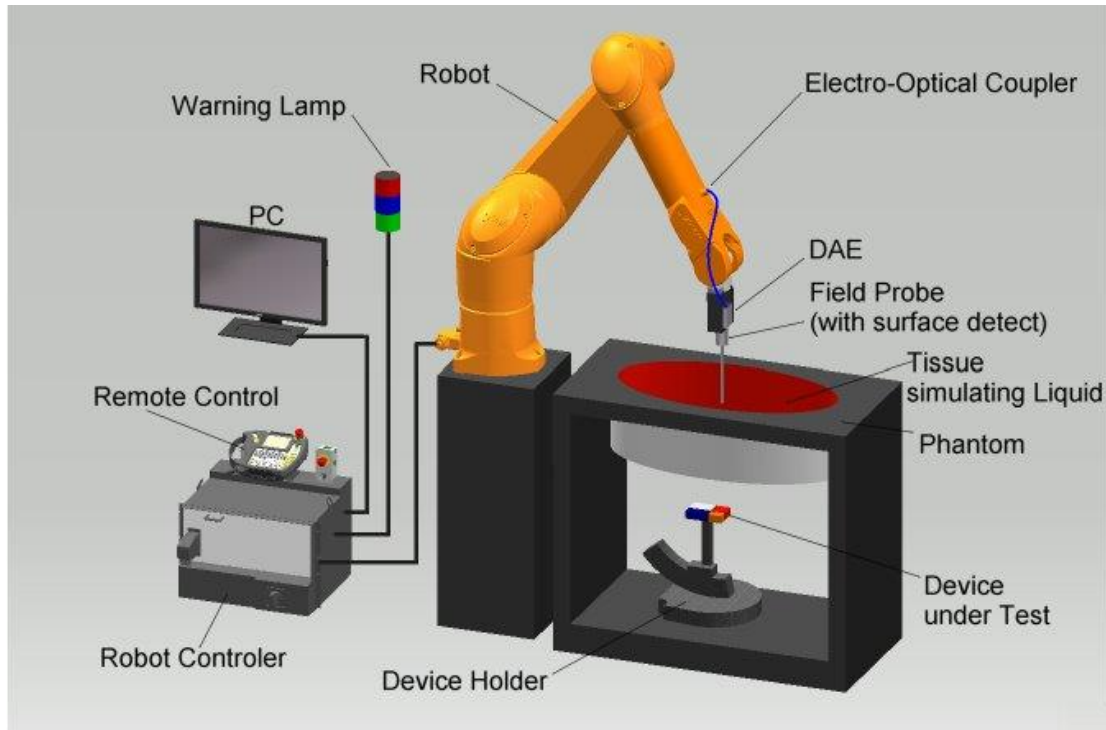
Ambient temperature:	20 – 24 °C
Tissue Simulating liquid:	20 – 24 °C
Relative humidity content:	40 – 50 %
Air pressure:	not relevant for this kind of testing
Power supply:	230 V / 50 Hz

Exact temperature values for each test are shown in the table(s) under 7.1 and/or on the measurement plots.

6 Test Set-up

6.1 Measurement system

6.1.1 System Description



- The DAS system for performing compliance tests consists of the following items:
- A standard high precision 6-axis robot (Stäubli RX/TX family) with controller and software. An arm extension for accommodating the data acquisition electronics (DAE).
- A dosimetric probe, i.e. an isotropic E-field probe optimized and calibrated for usage in tissue simulating liquid.
- A data acquisition electronic (DAE) which performs the signal amplification, signal multiplexing, AD-conversion, offset measurements, mechanical surface detection, collision detection, etc. The unit is battery powered with standard or rechargeable batteries. The signal is optically transmitted to the EOC.
- The Electro-Optical Coupler (EOC) performs the conversion from the optical into a digital electric signal of the DAE. The EOC is connected to the DAS measurement server.
- The DAS measurement server, which performs all real-time data evaluation for field measurements and surface detection, controls robot movements and handles safety operation. A computer operating Windows 7.
- DAS software and SEMCAD data evaluation software.
- Remote control with teach panel and additional circuitry for robot safety such as warning lamps, etc.
- The generic twin phantom enabling the testing of left-hand and right-hand usage.
- The triple flat and eli phantom for the testing of handheld and body-mounted wireless devices.
- The device holder for handheld mobile phones and mounting device adaptor for laptops
- Tissue simulating liquid mixed according to the given recipes.
- System check dipoles allowing to validate the proper functioning of the system.

6.1.2 Test environment

The DASY measurement system is placed in a laboratory room within an environment which avoids influence on SAR measurements by ambient electromagnetic fields and any reflection from the environment. The pictures at the beginning of the photo documentation show a complete view of the test environment. The system allows the measurement of SAR values larger than 0.005 mW/g.

6.1.3 Probe description

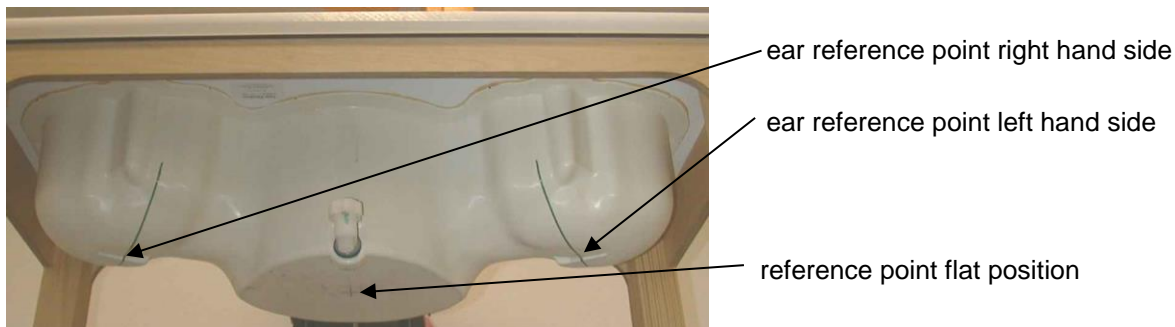
Isotropic E-Field Probe ES3DV3 for Dosimetric Measurements	
Technical data according to manufacturer information	
Construction	Symmetrical design with triangular core Interleaved sensors Built-in shielding against static charges PEEK enclosure material (resistant to organic solvents, e.g., butyl diglycol)
Calibration	Calibration certificate in Appendix D
Frequency	10 MHz to 3 GHz (dosimetry); Linearity: ± 0.2 dB (30 MHz to 3 GHz)
Directivity	± 0.2 dB in HSL (rotation around probe axis) ± 0.3 dB in HSL (rotation normal to probe axis)
Dynamic range	5 μ W/g to > 100 mW/g; Linearity: ± 0.2 dB
Dimensions	Overall length: 330 mm Tip length: 20 mm Body diameter: 12 mm Tip diameter: 3.9 mm Distance from probe tip to dipole centers: 2.0 mm
Application	General dosimetry up to 3 GHz Compliance tests of mobile phones Fast automatic scanning in arbitrary phantoms (ES3DV3)

Isotropic E-Field Probe EX3DV4 for Dosimetric Measurements	
Technical data according to manufacturer information	
Construction	Symmetrical design with triangular core Interleaved sensors Built-in shielding against static charges PEEK enclosure material (resistant to organic solvents, e.g., DGBE)
Calibration	ISO/IEC 17025 calibration service available.
Frequency	10 MHz to >6 GHz (dosimetry); Linearity: ± 0.2 dB (30 MHz to 6 GHz)
Directivity	± 0.3 dB in HSL (rotation around probe axis) ± 0.5 dB in tissue material (rotation normal to probe axis)
Dynamic range	10 μ W/g to > 100 mW/g; Linearity: ± 0.2 dB (noise: typically <1 μ W/g)
Dimensions	Overall length: 337 mm (Tip: 20mm) Tip length: 2.5 mm (Body: 12mm) Typical distance from probe tip to dipole centers: 1mm
Application	High precision dosimetric measurements in any exposure scenario (e.g., very strong gradient fields). Only probe which enables compliance testing for frequencies up to 6 GHz with precision of better 30%.

6.1.4 Phantom description

The used SAM Phantom meets the requirements specified in FCC KDB865664 D01 for Specific Absorption Rate (SAR) measurements.

The phantom consists of a fibreglass shell integrated in a wooden table. It allows left-hand and right-hand head as well as body-worn measurements with a maximum liquid depth of 18 cm in head position and 22 cm in planar position (body measurements). The thickness of the Phantom shell is 2 mm +/- 0.1 mm.



Triple Modular Phantom consists of three identical modules which can be installed and removed separately without emptying the liquid. It includes three reference points for phantom installation. Covers prevent evaporation of the liquid. Phantom material is resistant to DGBE based tissue simulating liquids.

6.1.5 Device holder description

The DASY device holder has two scales for device rotation (with respect to the body axis) and the device inclination (with respect to the line between the ear openings). The plane between the ear openings and the mouth tip has a rotation angle of 65° . The bottom plate contains three pair of bolts for locking the device holder. The device holder positions are adjusted to the standard measurement positions in the three sections. This device holder is used for standard mobile phones or PDA's only. If necessary an additional support of polystyrene material is used.



Larger DUT's (e.g. notebooks) cannot be tested using this device holder. Instead a support of bigger polystyrene cubes and thin polystyrene plates is used to position the DUT in all relevant positions to find and measure spots with maximum SAR values.

Therefore those devices are normally only tested at the flat part of the SAM.

6.1.6 Scanning procedure

- The DASY installation includes predefined files with recommended procedures for measurements and system check. They are read-only document files and destined as fully defined but unmeasured masks. All test positions (head or body-worn) are tested with the same configuration of test steps differing only in the grid definition for the different test positions.
- The „reference“ and „drift“ measurements are located at the beginning and end of the batch process. They measure the field drift at one single point in the liquid over the complete procedure. The indicated drift is mainly the variation of the DUT's output power and should vary max. +/- 5 %.
- The highest integrated SAR value is the main concern in compliance test applications. These values can mostly be found at the inner surface of the phantom and cannot be measured directly due to the sensor offset in the probe. To extrapolate the surface values, the measurement distances to the surface must be known accurately. A distance error of 0.5mm could produce SAR errors of 6% at 1800 MHz. Using predefined locations for measurements is not accurate enough. Any shift of the phantom (e.g., slight deformations after filling it with liquid) would produce high uncertainties. For an automatic and accurate detection of the phantom surface, the DASY5 system uses the mechanical surface detection. The detection is always at touch, but the probe will move backward from the surface the indicated distance before starting the measurement.
- The „area scan“ measures the SAR above the DUT or verification dipole on a parallel plane to the surface. It is used to locate the approximate location of the peak SAR with 2D spline interpolation. The robot performs a stepped movement along one grid axis while the local electrical field strength is measured by the probe. The probe is touching the surface of the SAM during acquisition of measurement values. The scan uses different grid spacings for different frequency measurements. Standard grid spacing for head measurements in frequency ranges ≤ 2 GHz is 15 mm in x- and y- dimension. For higher frequencies a finer resolution is needed, thus for the grid spacing is reduced according the following table:

Area scan grid spacing for different frequency ranges	
Frequency range	Grid spacing
≤ 2 GHz	≤ 15 mm
2 – 4 GHz	≤ 12 mm
4 – 6 GHz	≤ 10 mm

Grid spacing and orientation have no influence on the SAR result. For special applications where the standard scan method does not find the peak SAR within the grid, e.g. mobile phones with flip cover, the grid can be adapted in orientation. Results of this coarse scan are shown in annex B.

- A „zoom scan“ measures the field in a volume around the 2D peak SAR value acquired in the previous „coarse“ scan. It uses a fine meshed grid where the robot moves the probe in steps along all the 3 axis (x, y and z-axis) starting at the bottom of the Phantom. The grid spacing for the cube measurement is varied according to the measured frequency range, the dimensions are given in the following table:

Zoom scan grid spacing and volume for different frequency ranges			
Frequency range	Grid spacing for x, y axis	Grid spacing for z axis	Minimum zoom scan volume
≤ 2 GHz	≤ 8 mm	≤ 5 mm	≥ 30 mm
2 – 3 GHz	≤ 5 mm*	≤ 5 mm	≥ 28 mm
3 – 4 GHz	≤ 5 mm*	≤ 4 mm	≥ 28 mm
4 – 5 GHz	≤ 4 mm*	≤ 3 mm	≥ 25 mm
5 – 6 GHz	≤ 4 mm*	≤ 2 mm	≥ 22 mm

* When zoom scan is required and the reported SAR from the area scan based 1-g SAR estimation procedures of KDB Publication 447498 is ≤ 1.4 W/kg, ≤ 8 mm, ≤ 7 mm and ≤ 5 mm zoom scan resolution may be applied, respectively, for 2 GHz to 3 GHz, 3 GHz to 4 GHz and 4 GHz to 6 GHz.

DASY is also able to perform repeated zoom scans if more than 1 peak is found during area scan. In this document, the evaluated peak 1g and 10g averaged SAR values are shown in the 2D-graphics in annex B. Test results relevant for the specified standard (see section 3) are shown in table form in section 7.

6.1.7 Spatial Peak SAR Evaluation

The spatial peak SAR - value for 1 and 10 g is evaluated after the Cube measurements have been done. The basis of the evaluation are the SAR values measured at the points of the fine cube grid consisting of all points in the three directions x, y and z. The algorithm that finds the maximal averaged volume is separated into three different stages.

- The data between the dipole center of the probe and the surface of the phantom are extrapolated. This data cannot be measured since the center of the dipole is 1 to 2.7 mm away from the tip of the probe and the distance between the surface and the lowest measuring point is about 1 mm (see probe calibration sheet). The extrapolated data from a cube measurement can be visualized by selecting 'Graph Evaluated'.
- The maximum interpolated value is searched with a straight-forward algorithm. Around this maximum the SAR - values averaged over the spatial volumes (1g or 10 g) are computed using the 3d-spline interpolation algorithm. If the volume cannot be evaluated (i.e., if a part of the grid was cut off by the boundary of the measurement area) the evaluation will be started on the corners of the bottom plane of the cube.
- All neighbouring volumes are evaluated until no neighbouring volume with a higher average value is found.

Extrapolation

The extrapolation is based on a least square algorithm [W. Gander, Computermathematik, p.168-180]. Through the points in the first 3 cm along the z-axis, polynomials of order four are calculated. These polynomials are then used to evaluate the points between the surface and the probe tip. The points, calculated from the surface, have a distance of 1 mm from each other.

Interpolation

The interpolation of the points is done with a 3d-Spline. The 3d-Spline is composed of three one-dimensional splines with the "Not a knot"-condition [W. Gander, Computermathematik, p.141-150] (x, y and z -direction) [Numerical Recipes in C, Second Edition, p.123ff].

Volume Averaging

At First the size of the cube is calculated. Then the volume is integrated with the trapezoidal algorithm. 8000 points (20x20x20) are interpolated to calculate the average.

Advanced Extrapolation

DASY uses the advanced extrapolation option which is able to compensate boundary effects on E-field probes.

6.1.8 Data Storage and Evaluation

Data Storage

The DASY software stores the acquired data from the data acquisition electronics as raw data (in microvolt readings from the probe sensors), together with all necessary software parameters for the data evaluation (probe calibration data, liquid parameters and device frequency and modulation data) in measurement files with the extension ".DA4", ".DA5x". The software evaluates the desired unit and format for output each time the data is visualized or exported. This allows verification of the complete software setup even after the measurement and allows correction of incorrect parameter settings. For example, if a measurement has been performed with a wrong crest factor parameter in the device setup, the parameter can be corrected afterwards and the data can be re-evaluated.

The measured data can be visualized or exported in different units or formats, depending on the selected probe type ([V/m], [A/m], [°C], [mW/g], [mW/cm²], [dBrel], etc.). Some of these units are not available in certain situations or show meaningless results, e.g., a SAR output in a lossless media will always be zero. Raw data can also be exported to perform the evaluation with other software packages.

Data Evaluation by SEMCAD

The SEMCAD software automatically executes the following procedures to calculate the field units from the microvolt readings at the probe connector. The parameters used in the evaluation are stored in the configuration modules of the software:

Probe parameters:	- Sensitivity	Norm _i , a _{i0} , a _{i1} , a _{i2}
	- Conversion factor	ConvF _i
	- Diode compression point	Dcpi
Device parameters:	- Frequency	f
	- Crest factor	cf
Media parameters:	- Conductivity	σ
	- Density	ρ

These parameters must be set correctly in the software. They can be found in the component documents or they can be imported into the software from the configuration files issued for the DASY components. In the direct measuring mode of the multimeter option, the parameters of the actual system setup are used. In the scan visualization and export modes, the parameters stored in the corresponding document files are used.

The first step of the evaluation is a linearization of the filtered input signal to account for the compression characteristics of the detector diode. The compensation depends on the input signal, the diode type and the DC-transmission factor from the diode to the evaluation electronics.

If the exciting field is pulsed, the crest factor of the signal must be known to correctly compensate for peak power. The formula for each channel can be given as:

$$V_i = U_i + U_i^2 \cdot cf/dcp_i$$

with V_i = compensated signal of channel i (i = x, y, z)
 U_i = input signal of channel i (i = x, y, z)
 cf = crest factor of exciting field (DASY parameter)
 dcp_i = diode compression point (DASY parameter)

From the compensated input signals the primary field data for each channel can be evaluated:

E-field probes: $E_i = (V_i / Norm_i \cdot ConvF)^{1/2}$

H-field probes: $H_i = (V_i)^{1/2} \cdot (a_{i0} + a_{i1}f + a_{i2}f^2)/f$

with V_i = compensated signal of channel i (i = x, y, z)
 $Norm_i$ = sensor sensitivity of channel i (i = x, y, z)
 [mV/(V/m)²] for E-field Probes
 ConvF = sensitivity enhancement in solution
 a_{ij} = sensor sensitivity factors for H-field probes
 f = carrier frequency [GHz]
 E_i = electric field strength of channel i in V/m
 H_i = magnetic field strength of channel i in A/m

The RSS value of the field components gives the total field strength (Hermitian magnitude):

$$E_{tot} = (E_x^2 + E_y^2 + E_z^2)^{1/2}$$

The primary field data are used to calculate the derived field units.

$$SAR = (E_{tot}^2 \cdot \sigma) / (\rho \cdot 1000)$$

with SAR = local specific absorption rate in mW/g
 E_{tot} = total field strength in V/m
 σ = conductivity in [mho/m] or [Siemens/m]
 ρ = equivalent tissue density in g/cm³

Note that the density is normally set to 1 (or 1.06), to account for actual brain density rather than the density of the simulation liquid. The power flow density is calculated assuming the excitation field to be a free space field.

$$P_{pwe} = E_{tot}^2 / 3770 \quad \text{or} \quad P_{pwe} = H_{tot}^2 \cdot 37.7$$

with P_{pwe} = equivalent power density of a plane wave in mW/cm²
 E_{tot} = total electric field strength in V/m
 H_{tot} = total magnetic field strength in A/m

6.1.11 Measurement uncertainty evaluation for SAR test

DASY5 Uncertainty Budget									
According to IEEE 1528/2003 and IEC 62209-1 for the 300 MHz - 3 GHz range									
Source of uncertainty	Uncertainty Value		Probability Distribution	Divisor	c_i (1g)	c_i (10g)	Standard Uncertainty		v_i^2 or v_{eff}
	\pm %						\pm %, (1g)	\pm %, (10g)	
Measurement System									
Probe calibration	\pm 6.0 %		Normal	1	1	1	\pm 6.0 %	\pm 6.0 %	∞
Axial isotropy	\pm 4.7 %		Rectangular	$\sqrt{3}$	0.7	0.7	\pm 1.9 %	\pm 1.9 %	∞
Hemispherical isotropy	\pm 9.6 %		Rectangular	$\sqrt{3}$	0.7	0.7	\pm 3.9 %	\pm 3.9 %	∞
Boundary effects	\pm 1.0 %		Rectangular	$\sqrt{3}$	1	1	\pm 0.6 %	\pm 0.6 %	∞
Probe linearity	\pm 4.7 %		Rectangular	$\sqrt{3}$	1	1	\pm 2.7 %	\pm 2.7 %	∞
System detection limits	\pm 1.0 %		Rectangular	$\sqrt{3}$	1	1	\pm 0.6 %	\pm 0.6 %	∞
Readout electronics	\pm 0.3 %		Normal	1	1	1	\pm 0.3 %	\pm 0.3 %	∞
Response time	\pm 0.8 %		Rectangular	$\sqrt{3}$	1	1	\pm 0.5 %	\pm 0.5 %	∞
Integration time	\pm 2.6 %		Rectangular	$\sqrt{3}$	1	1	\pm 1.5 %	\pm 1.5 %	∞
RF ambient noise	\pm 3.0 %		Rectangular	$\sqrt{3}$	1	1	\pm 1.7 %	\pm 1.7 %	∞
RF ambient reflections	\pm 3.0 %		Rectangular	$\sqrt{3}$	1	1	\pm 1.7 %	\pm 1.7 %	∞
Probe positioner	\pm 0.4 %		Rectangular	$\sqrt{3}$	1	1	\pm 0.2 %	\pm 0.2 %	∞
Probe positioning	\pm 2.9 %		Rectangular	$\sqrt{3}$	1	1	\pm 1.7 %	\pm 1.7 %	∞
Max.SAR evaluation	\pm 1.0 %		Rectangular	$\sqrt{3}$	1	1	\pm 0.6 %	\pm 0.6 %	∞
Test Sample Related									
Device positioning	\pm 2.9 %		Normal	1	1	1	\pm 2.9 %	\pm 2.9 %	145
Device holder uncertainty	\pm 3.6 %		Normal	1	1	1	\pm 3.6 %	\pm 3.6 %	5
Power drift	\pm 5.0 %		Rectangular	$\sqrt{3}$	1	1	\pm 2.9 %	\pm 2.9 %	∞
Phantom and Set-up									
Phantom uncertainty	\pm 4.0 %		Rectangular	$\sqrt{3}$	1	1	\pm 2.3 %	\pm 2.3 %	∞
Liquid conductivity (target)	\pm 5.0 %		Rectangular	$\sqrt{3}$	0.64	0.43	\pm 1.8 %	\pm 1.2 %	∞
Liquid conductivity (meas.)	\pm 5.0 %		Rectangular	$\sqrt{3}$	0.64	0.43	\pm 1.8 %	\pm 1.2 %	∞
Liquid permittivity (target)	\pm 5.0 %		Rectangular	$\sqrt{3}$	0.6	0.49	\pm 1.7 %	\pm 1.4 %	∞
Liquid permittivity (meas.)	\pm 5.0 %		Rectangular	$\sqrt{3}$	0.6	0.49	\pm 1.7 %	\pm 1.4 %	∞
Combined Std.							\pm 11.1 %	\pm 10.8 %	387
Expanded Std.							\pm 22.1 %	\pm 21.6 %	

Table 5: Measurement uncertainties

Worst-Case uncertainty budget for DASY5 assessed according to IEEE 1528/2003.

The budget is valid for 2G and 3G communication signals and frequency range 300MHz - 3 GHz.

For these conditions it represents a worst-case analysis. For specific tests and configurations, the uncertainty could be considerable smaller.

Relative DASYS5 Uncertainty Budget for SAR Tests								
According to IEEE 1528/2013 and IEC62209/2011 for the 0.3 - 3GHz range								
Error Description	Uncertainty Value ± %	Probability Distribution	Divisor	c _i (1g)	c _i (10g)	Standard Uncertainty		v _i ² or v _{eff}
						± %, (1g)	± %, (10g)	
Measurement System								
Probe calibration	± 6.0 %	Normal	1	1	1	± 6.0 %	± 6.0 %	∞
Axial isotropy	± 4.7 %	Rectangular	√ 3	0.7	0.7	± 1.9 %	± 1.9 %	∞
Hemispherical isotropy	± 9.6 %	Rectangular	√ 3	0.7	0.7	± 3.9 %	± 3.9 %	∞
Boundary effects	± 1.0 %	Rectangular	√ 3	1	1	± 0.6 %	± 0.6 %	∞
Probe linearity	± 4.7 %	Rectangular	√ 3	1	1	± 2.7 %	± 2.7 %	∞
System detection limits	± 1.0 %	Rectangular	√ 3	1	1	± 0.6 %	± 0.6 %	∞
Modulation Response	± 2.4 %	Rectangular	√ 3	1	1	± 1.4 %	± 1.4 %	∞
Readout electronics	± 0.3 %	Normal	1	1	1	± 0.3 %	± 0.3 %	∞
Response time	± 0.8 %	Rectangular	√ 3	1	1	± 0.5 %	± 0.5 %	∞
Integration time	± 2.6 %	Rectangular	√ 3	1	1	± 1.5 %	± 1.5 %	∞
RF ambient noise	± 3.0 %	Rectangular	√ 3	1	1	± 1.7 %	± 1.7 %	∞
RF ambient reflections	± 3.0 %	Rectangular	√ 3	1	1	± 1.7 %	± 1.7 %	∞
Probe positioner	± 0.4 %	Rectangular	√ 3	1	1	± 0.2 %	± 0.2 %	∞
Probe positioning	± 2.9 %	Rectangular	√ 3	1	1	± 1.7 %	± 1.7 %	∞
Max. SAR evaluation	± 2.0 %	Rectangular	√ 3	1	1	± 1.2 %	± 1.2 %	∞
Test Sample Related								
Device positioning	± 2.9 %	Normal	1	1	1	± 2.9 %	± 2.9 %	145
Device holder uncertainty	± 3.6 %	Normal	1	1	1	± 3.6 %	± 3.6 %	5
Power drift	± 5.0 %	Rectangular	√ 3	1	1	± 2.9 %	± 2.9 %	∞
Phantom and Set-up								
Phantom uncertainty	± 6.1 %	Rectangular	√ 3	1	1	± 3.5 %	± 3.5 %	∞
SAR correction	± 1.9 %	Rectangular	√ 3	1	0.84	± 1.1 %	± 0.9 %	∞
Liquid conductivity (meas.)	± 5.0 %	Rectangular	√ 3	0.78	0.71	± 2.3 %	± 2.0 %	∞
Liquid permittivity (meas.)	± 5.0 %	Rectangular	√ 3	0.26	0.26	± 0.8 %	± 0.8 %	∞
Temp. Unc. - Conductivity	± 3.4 %	Rectangular	√ 3	0.78	0.71	± 1.5 %	± 1.4 %	∞
Temp. Unc. - Permittivity	± 0.4 %	Rectangular	√ 3	0.23	0.26	± 0.1 %	± 0.1 %	∞
Combined Uncertainty						± 11.3 %	± 11.3 %	330
Expanded Std. Uncertainty						± 22.7 %	± 22.5 %	

Table 6: Measurement uncertainties

Worst-Case uncertainty budget for DASYS5 assessed according to IEEE 1528/2013 and IEC 62209-1/2011 standards. The budget is valid for the frequency range 300MHz -3 GHz and represents a worst-case analysis. For specific tests and configurations, the uncertainty could be considerable smaller.

DASY5 Uncertainty Budget								
According to IEC 62209-2/2010 for the 300 MHz - 6 GHz range								
Source of uncertainty	Uncertainty Value	Probability Distribution	Divisor	c _i (1g)	c _i (10g)	Standard Uncertainty		v _i ² or v _{eff}
						± %, (1g)	± %, (10g)	
Measurement System								
Probe calibration	± 6.6 %	Normal	1	1	1	± 6.6 %	± 6.6 %	∞
Axial isotropy	± 4.7 %	Rectangular	√ 3	0.7	0.7	± 1.9 %	± 1.9 %	∞
Hemispherical isotropy	± 9.6 %	Rectangular	√ 3	0.7	0.7	± 3.9 %	± 3.9 %	∞
Boundary effects	± 2.0 %	Rectangular	√ 3	1	1	± 1.2 %	± 1.2 %	∞
Probe linearity	± 4.7 %	Rectangular	√ 3	1	1	± 2.7 %	± 2.7 %	∞
System detection limits	± 1.0 %	Rectangular	√ 3	1	1	± 0.6 %	± 0.6 %	∞
Modulation Response	± 2.4 %	Rectangular	√ 3	1	1	± 1.4 %	± 1.4 %	∞
Readout electronics	± 0.3 %	Normal	1	1	1	± 0.3 %	± 0.3 %	∞
Response time	± 0.8 %	Rectangular	√ 3	1	1	± 0.5 %	± 0.5 %	∞
Integration time	± 2.6 %	Rectangular	√ 3	1	1	± 1.5 %	± 1.5 %	∞
RF ambient noise	± 3.0 %	Rectangular	√ 3	1	1	± 1.7 %	± 1.7 %	∞
RF ambient reflections	± 3.0 %	Rectangular	√ 3	1	1	± 1.7 %	± 1.7 %	∞
Probe positioner	± 0.8 %	Rectangular	√ 3	1	1	± 0.5 %	± 0.5 %	∞
Probe positioning	± 6.7 %	Rectangular	√ 3	1	1	± 3.9 %	± 3.9 %	∞
Post-processing	± 4.0 %	Rectangular	√ 3	1	1	± 2.3 %	± 2.3 %	∞
Test Sample Related								
Device positioning	± 2.9 %	Normal	1	1	1	± 2.9 %	± 2.9 %	145
Device holder uncertainty	± 3.6 %	Normal	1	1	1	± 3.6 %	± 3.6 %	5
Power drift	± 5.0 %	Rectangular	√ 3	1	1	± 2.9 %	± 2.9 %	∞
Phantom and Set-up								
Phantom uncertainty	± 7.9 %	Rectangular	√ 3	1	1	± 4.6 %	± 4.6 %	∞
SAR correction	± 1.9 %	Rectangular	√ 3	1	0.84	± 1.1 %	± 0.9 %	∞
Liquid conductivity (meas.)	± 5.0 %	Rectangular	√ 3	0.78	0.71	± 2.3 %	± 2.0 %	∞
Liquid permittivity (meas.)	± 5.0 %	Rectangular	√ 3	0.26	0.26	± 0.8 %	± 0.8 %	∞
Temp. Unc. - Conductivity	± 3.4 %	Rectangular	√ 3	0.78	0.71	± 1.5 %	± 1.4 %	∞
Temp. Unc. - Permittivity	± 0.4 %	Rectangular	√ 3	0.23	0.26	± 0.1 %	± 0.1 %	∞
Combined Uncertainty						± 12.7 %	± 12.6 %	330
Expanded Std. Uncertainty						± 25.4 %	± 25.3 %	

Table 7: Measurement uncertainties.

Worst-Case uncertainty budget for DASY5 assessed according to IEC 62209-2/2010 standard. The budget is valid for the frequency range 300MHz - 6 GHz and represents a worst-case analysis. For specific tests and configurations, the uncertainty could be considerable smaller.

Relative DASY5 Uncertainty Budget for SAR Tests									
According to IEEE 1528/2003 and IEC 62209-1 for the 3 - 6 GHz range									
Error Description	Uncertainty Value	Probability Distribution	Divisor	c _i	c _i	Standard Uncertainty		v _i ² or v _{eff}	
				(1g)	(10g)	± %, (1g)	± %, (10g)		
Measurement System									
Probe calibration	± 6.6 %	Normal	1	1	1	± 6.6 %	± 6.6 %	∞	
Axial isotropy	± 4.7 %	Rectangular	√ 3	0.7	0.7	± 1.9 %	± 1.9 %	∞	
Hemispherical isotropy	± 9.6 %	Rectangular	√ 3	0.7	0.7	± 3.9 %	± 3.9 %	∞	
Boundary effects	± 2.0 %	Rectangular	√ 3	1	1	± 1.2 %	± 1.2 %	∞	
Probe linearity	± 4.7 %	Rectangular	√ 3	1	1	± 2.7 %	± 2.7 %	∞	
System detection limits	± 1.0 %	Rectangular	√ 3	1	1	± 0.6 %	± 0.6 %	∞	
Readout electronics	± 0.3 %	Normal	1	1	1	± 0.3 %	± 0.3 %	∞	
Response time	± 0.8 %	Rectangular	√ 3	1	1	± 0.5 %	± 0.5 %	∞	
Integration time	± 2.6 %	Rectangular	√ 3	1	1	± 1.5 %	± 1.5 %	∞	
RF ambient noise	± 3.0 %	Rectangular	√ 3	1	1	± 1.7 %	± 1.7 %	∞	
RF ambient reflections	± 3.0 %	Rectangular	√ 3	1	1	± 1.7 %	± 1.7 %	∞	
Probe positioner	± 0.8 %	Rectangular	√ 3	1	1	± 0.5 %	± 0.5 %	∞	
Probe positioning	± 6.7 %	Rectangular	√ 3	1	1	± 3.9 %	± 3.9 %	∞	
Max. SAR evaluation	± 4.0 %	Rectangular	√ 3	1	1	± 2.3 %	± 2.3 %	∞	
Test Sample Related									
Device positioning	± 2.9 %	Normal	1	1	1	± 2.9 %	± 2.9 %	145	
Device holder uncertainty	± 3.6 %	Normal	1	1	1	± 3.6 %	± 3.6 %	5	
Power drift	± 5.0 %	Rectangular	√ 3	1	1	± 2.9 %	± 2.9 %	∞	
Phantom and Set-up									
Phantom uncertainty	± 4.0 %	Rectangular	√ 3	1	1	± 2.3 %	± 2.3 %	∞	
Liquid conductivity (target)	± 5.0 %	Rectangular	√ 3	0.64	0.43	± 1.8 %	± 1.2 %	∞	
Liquid conductivity (meas.)	± 5.0 %	Rectangular	√ 3	0.64	0.43	± 1.8 %	± 1.2 %	∞	
Liquid permittivity (target)	± 5.0 %	Rectangular	√ 3	0.6	0.49	± 1.7 %	± 1.4 %	∞	
Liquid permittivity (meas.)	± 5.0 %	Rectangular	√ 3	0.6	0.49	± 1.7 %	± 1.4 %	∞	
Combined Uncertainty						± 12.1 %	± 11.9 %	330	
Expanded Std. Uncertainty						± 24.3 %	± 23.8 %		

Table 8: Measurement uncertainties

Worst-Case uncertainty budget for DASY5 valid for 3G communication signals and frequency range 3 - 6 GHz. Probe calibration error reflects uncertainty of the EX3D probe. For specific tests and configurations, the uncertainty could be considerable smaller.

Relative DASYS5 Uncertainty Budget for SAR Tests								
According to IEEE 1528/2013 and IEC62209-1/2011 (3-6GHz range)								
Error Description	Uncertainty Value	Probability Distribution	Divisor	c_i	c_i	Standard Uncertainty		v_i^2 or
				(1g)	(10g)	± %, (1g)	± %, (10g)	v_{eff}
Measurement System								
Probe calibration	± 6.6 %	Normal	1	1	1	± 6.6 %	± 6.6 %	∞
Axial isotropy	± 4.7 %	Rectangular	√ 3	0.7	0.7	± 1.9 %	± 1.9 %	∞
Hemispherical isotropy	± 9.6 %	Rectangular	√ 3	0.7	0.7	± 3.9 %	± 3.9 %	∞
Boundary effects	± 2.0 %	Rectangular	√ 3	1	1	± 1.2 %	± 1.2 %	∞
Probe linearity	± 4.7 %	Rectangular	√ 3	1	1	± 2.7 %	± 2.7 %	∞
System detection limits	± 1.0 %	Rectangular	√ 3	1	1	± 0.6 %	± 0.6 %	∞
Modulation Response	± 2.4 %	Rectangular	√ 3	1	1	± 1.4 %	± 1.4 %	∞
Readout electronics	± 0.3 %	Normal	1	1	1	± 0.3 %	± 0.3 %	∞
Response time	± 0.8 %	Rectangular	√ 3	1	1	± 0.5 %	± 0.5 %	∞
Integration time	± 2.6 %	Rectangular	√ 3	1	1	± 1.5 %	± 1.5 %	∞
RF ambient noise	± 3.0 %	Rectangular	√ 3	1	1	± 1.7 %	± 1.7 %	∞
RF ambient reflections	± 3.0 %	Rectangular	√ 3	1	1	± 1.7 %	± 1.7 %	∞
Probe positioner	± 0.8 %	Rectangular	√ 3	1	1	± 0.5 %	± 0.5 %	∞
Probe positioning	± 6.7 %	Rectangular	√ 3	1	1	± 3.9 %	± 3.9 %	∞
Max. SAR evaluation	± 4.0 %	Rectangular	√ 3	1	1	± 2.3 %	± 2.3 %	∞
Test Sample Related								
Device positioning	± 2.9 %	Normal	1	1	1	± 2.9 %	± 2.9 %	145
Device holder uncertainty	± 3.6 %	Normal	1	1	1	± 3.6 %	± 3.6 %	5
Power drift	± 5.0 %	Rectangular	√ 3	1	1	± 2.9 %	± 2.9 %	∞
Phantom and Set-up								
Phantom uncertainty	± 6.6 %	Rectangular	√ 3	1	1	± 3.8 %	± 3.8 %	∞
SAR correction	± 1.9 %	Rectangular	√ 3	1	0.84	± 1.1 %	± 0.9 %	∞
Liquid conductivity (meas.)	± 5.0 %	Rectangular	√ 3	0.78	0.71	± 2.3 %	± 2.0 %	∞
Liquid permittivity (meas.)	± 5.0 %	Rectangular	√ 3	0.26	0.26	± 0.8 %	± 0.8 %	∞
Temp. Unc. - Conductivity	± 3.4 %	Rectangular	√ 3	0.78	0.71	± 1.5 %	± 1.4 %	∞
Temp. Unc. - Permittivity	± 0.4 %	Rectangular	√ 3	0.23	0.26	± 0.1 %	± 0.1 %	∞
Combined Uncertainty						± 12.4 %	± 12.4 %	330
Expanded Std. Uncertainty						± 24.9 %	± 24.8 %	

Table 9: Measurement uncertainties

Worst-Case uncertainty budget for DASYS5 assessed according to IEEE 1528/2013

and IEC 62209-1/2011 standards. The budget is valid for the frequency range 3GHz -6GHz and represents a worst-case analysis. For specific tests and configurations, the uncertainty could be considerable smaller.

6.1.12 Measurement uncertainty evaluation for System Check

Uncertainty of a System Performance Check with DASY5 System for the 0.3 - 3 GHz range								
Source of uncertainty	Uncertainty Value	Probability Distribution	Divisor	c_i	c_i	Standard Uncertainty		v_i^2 or
				(1g)	(10g)	± %, (1g)	± %, (10g)	v_{eff}
Measurement System								
Probe calibration	± 6.0 %	Normal	1	1	1	± 6.0 %	± 6.0 %	∞
Axial isotropy	± 4.7 %	Rectangular	√ 3	0.7	0.7	± 1.9 %	± 1.9 %	∞
Hemispherical isotropy	± 0.0 %	Rectangular	√ 3	0.7	0.7	± 0.0 %	± 0.0 %	∞
Boundary effects	± 1.0 %	Rectangular	√ 3	1	1	± 0.6 %	± 0.6 %	∞
Probe linearity	± 4.7 %	Rectangular	√ 3	1	1	± 2.7 %	± 2.7 %	∞
System detection limits	± 1.0 %	Rectangular	√ 3	1	1	± 0.6 %	± 0.6 %	∞
Readout electronics	± 0.3 %	Normal	1	1	1	± 0.3 %	± 0.3 %	∞
Response time	± 0.0 %	Rectangular	√ 3	1	1	± 0.0 %	± 0.0 %	∞
Integration time	± 0.0 %	Rectangular	√ 3	1	1	± 0.0 %	± 0.0 %	∞
RF ambient conditions	± 3.0 %	Rectangular	√ 3	1	1	± 1.7 %	± 1.7 %	∞
Probe positioner	± 0.4 %	Rectangular	√ 3	1	1	± 0.2 %	± 0.2 %	∞
Probe positioning	± 2.9 %	Rectangular	√ 3	1	1	± 1.7 %	± 1.7 %	∞
Max. SAR evaluation	± 1.0 %	Rectangular	√ 3	1	1	± 0.6 %	± 0.6 %	∞
Test Sample Related								
Dev. of experimental dipole	± 0.0 %	Rectangular	√ 3	1	1	± 0.0 %	± 0.0 %	∞
Source to liquid distance	± 2.0 %	Rectangular	√ 3	1	1	± 1.2 %	± 1.2 %	∞
Power drift	± 3.4 %	Rectangular	√ 3	1	1	± 2.0 %	± 2.0 %	∞
Phantom and Set-up								
Phantom uncertainty	± 4.0 %	Rectangular	√ 3	1	1	± 2.3 %	± 2.3 %	∞
SAR correction	± 1.9 %	Rectangular	√ 3	1	0.84	± 1.1 %	± 0.9 %	∞
Liquid conductivity (meas.)	± 5.0 %	Normal	1	0.78	0.71	± 3.9 %	± 3.6 %	∞
Liquid permittivity (meas.)	± 5.0 %	Normal	1	0.26	0.26	± 1.3 %	± 1.3 %	∞
Temp. unc. - Conductivity	± 1.7 %	Rectangular	√ 3	0.78	0.71	± 0.8 %	± 0.7 %	∞
Temp. unc. - Permittivity	± 0.3 %	Rectangular	√ 3	0.23	0.26	± 0.0 %	± 0.0 %	∞
Combined Uncertainty						± 9.1 %	± 8.9 %	330
Expanded Std. Uncertainty						± 18.2 %	± 17.9 %	

Table 10: Measurement uncertainties of the System Check with DASY5 (0.3-3GHz)

Uncertainty of a System Performance Check with DASY5 System for the 3 - 6 GHz range								
Source of uncertainty	Uncertainty Value	Probability Distribution	Divisor	c _i	c _i	Standard Uncertainty		v _i ² or v _{eff}
				(1g)	(10g)	± %, (1g)	± %, (10g)	
Measurement System								
Probe calibration	± 6.6 %	Normal	1	1	1	± 6.6 %	± 6.6 %	∞
Axial isotropy	± 4.7 %	Rectangular	√ 3	0.7	0.7	± 1.9 %	± 1.9 %	∞
Hemispherical isotropy	± 0.0 %	Rectangular	√ 3	0.7	0.7	± 0.0 %	± 0.0 %	∞
Boundary effects	± 1.0 %	Rectangular	√ 3	1	1	± 0.6 %	± 0.6 %	∞
Probe linearity	± 4.7 %	Rectangular	√ 3	1	1	± 2.7 %	± 2.7 %	∞
System detection limits	± 1.0 %	Rectangular	√ 3	1	1	± 0.6 %	± 0.6 %	∞
Readout electronics	± 0.3 %	Normal	1	1	1	± 0.3 %	± 0.3 %	∞
Response time	± 0.0 %	Rectangular	√ 3	1	1	± 0.0 %	± 0.0 %	∞
Integration time	± 0.0 %	Rectangular	√ 3	1	1	± 0.0 %	± 0.0 %	∞
RF ambient conditions	± 3.0 %	Rectangular	√ 3	1	1	± 1.7 %	± 1.7 %	∞
Probe positioner	± 0.8 %	Rectangular	√ 3	1	1	± 0.5 %	± 0.5 %	∞
Probe positioning	± 6.7 %	Rectangular	√ 3	1	1	± 3.9 %	± 3.9 %	∞
Max. SAR evaluation	± 1.0 %	Rectangular	√ 3	1	1	± 0.6 %	± 0.6 %	∞
Test Sample Related								
Dev. of experimental dipole	± 0.0 %	Rectangular	√ 3	1	1	± 0.0 %	± 0.0 %	∞
Source to liquid distance	± 2.0 %	Rectangular	√ 3	1	1	± 1.2 %	± 1.2 %	∞
Power drift	± 3.4 %	Rectangular	√ 3	1	1	± 2.0 %	± 2.0 %	∞
Phantom and Set-up								
Phantom uncertainty	± 4.0 %	Rectangular	√ 3	1	1	± 2.3 %	± 2.3 %	∞
SAR correction	± 1.9 %	Rectangular	√ 3	1	0.84	± 1.1 %	± 0.9 %	∞
Liquid conductivity (meas.)	± 5.0 %	Normal	1	0.78	0.71	± 3.9 %	± 3.6 %	∞
Liquid permittivity (meas.)	± 5.0 %	Normal	1	0.26	0.26	± 1.3 %	± 1.3 %	∞
Temp. unc. - Conductivity	± 1.7 %	Rectangular	√ 3	0.78	0.71	± 0.8 %	± 0.7 %	∞
Temp. unc. - Permittivity	± 0.3 %	Rectangular	√ 3	0.23	0.26	± 0.0 %	± 0.0 %	∞
Combined Uncertainty						± 10.1 %	± 10.0 %	330
Expanded Std. Uncertainty						± 20.2 %	± 19.9 %	

Table 11: Measurement uncertainties of the System Check with DASY5 (3-6GHz)

Note: Worst case probe calibration uncertainty has been applied for all probes used during the measurements.

6.1.13 System check

The system check is performed for verifying the accuracy of the complete measurement system and performance of the software. The system check is performed with tissue equivalent material according to IEEE 1528. The following table shows system check results for all frequency bands and tissue liquids used during the tests (plot(s) see annex A).

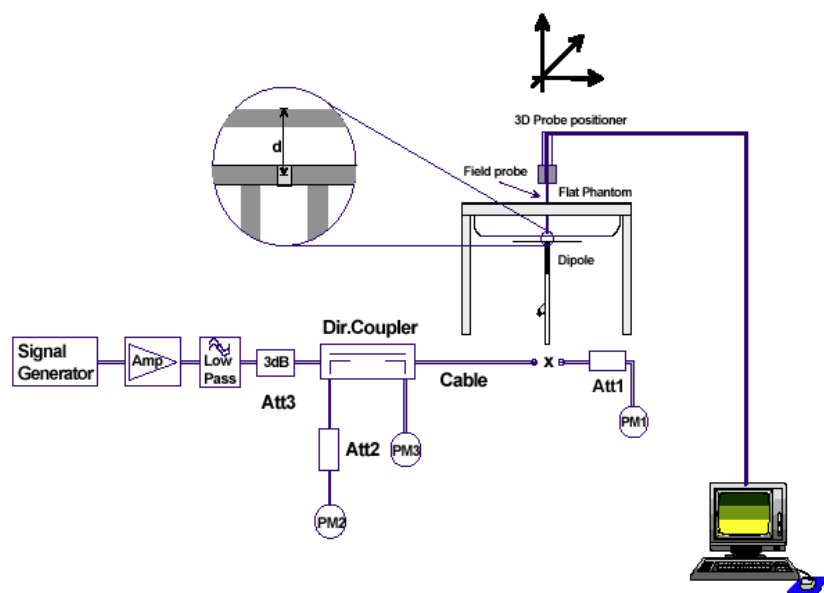
System performance check (1000 mW)									
System validation Kit	Probe	Freq. [MHz]	Target SAR _{1g} /mW/g (+/- 10%)	Target SAR _{10g} /mW/g (+/- 10%)	Measured SAR _{1g} /mW/g	SAR _{1g} dev.	Measured SAR _{10g} /mW/g	SAR _{10g} dev.	Measured date
D2450V2 S/N: 710	ES3DV3 / 3320	2450 body	51.10	24.20	52.40	2.5%	24.10	-0.4%	2016-11-15
D5GHzV2 S/N: 1055	EX3DV4 S/N: 3944	5200 body	76.60	21.50	74.40	-2.9%	20.60	-4.2%	2016-11-16

Table 12: Results system check

6.1.14 System check procedure

The system check is performed by using a validation dipole which is positioned parallel to the planar part of the SAM phantom at the reference point. The distance of the dipole to the SAM phantom is determined by a plexiglass spacer. The dipole is connected to the signal source consisting of signal generator and amplifier via a directional coupler, N-connector cable and adaption to SMA. It is fed with a power of 1000 mW for frequencies below 2 GHz or 100 mW for frequencies above 2 GHz. To adjust this power a power meter is used. The power sensor is connected to the cable before the system check to measure the power at this point and do adjustments at the signal generator. At the outputs of the directional coupler both return loss as well as forward power are controlled during the validation to make sure that emitted power at the dipole is kept constant. This can also be checked by the power drift measurement after the test (result on plot).

System check results have to be equal or near the values determined during dipole calibration (target SAR in table above) with the relevant liquids and test system.



6.1.15 System validation

The system validation is performed in a similar way as a system check. It needs to be performed once a SAR measurement system has been established and allows an evaluation of the system accuracy with all components used together with the specified system. It has to be repeated at least once a year or when new system components are used (DAE, probe, phantom, dipole, liquid type).

In addition to the procedure used during system check a system validation also includes checks of probe isotropy, probe modulation factor and RF signal.

The following table lists the system validations relevant for this test report:

Frequency (MHz)	DASY SW	Dipole Type /SN	Probe Type / SN	Calibrated signal type(s)	DAE unit Type / SN	body validation
2450	V52.8.7	D2450V2 / 710	ES3DV3 / 3320	CW	DAE3/ 413	2016-09-07
5200	V52.8.7	D5GHzV2 / 1055	EX3DV4 / 3944	CW	DAE3/ 477	2016-10-25

7 Detailed Test Results

7.1 Conducted power measurements

7.1.1 Conducted power measurements WLAN 2450 MHz

802.11b		maximum average conducted output power [dBm]			
Band	Ch	1Mbps	2Mbps	5.5Mbps	11Mbps
2450MHz	1	12.8	12.5	11.6	10.7
	6	12.5	12.2	11.3	10.5
	11	12.2	11.9	11.1	10.2

Table 13: Test results conducted power measurement 802.11b

802.11g		maximum average conducted output power [dBm]							
Band	Ch	6Mbps	9Mbps	12Mbps	18Mbps	24Mbps	36Mbps	48Mbps	54Mbps
2450MHz	1	7.7	7.0	6.4	5.4	4.5	3.6	2.8	2.3
	6	10.5	9.7	9.2	8.3	7.2	6.4	5.6	5.2
	11	6.8	6.1	5.5	4.6	3.6	2.7	2.0	1.5

Table 14: Test results conducted power measurement 802.11g

802.11n HT-20		maximum average conducted output power [dBm]							
Band	Ch	MCS-0 6.5Mbps	MCS-1 13Mbps	MCS-2 19.5Mbps	MCS-3 26Mbps	MCS-4 39Mbps	MCS-5 52Mbps	MCS-6 58.5Mbps	MCS-7 65Mbps
2450MHz	1	7.3	6.1	5.1	4.3	3.2	2.8	2.3	2.2
	6	10.4	9.0	8.2	7.2	6.3	5.7	5.5	5.3
	11	6.6	5.3	4.4	3.7	2.5	2.1	1.7	1.5

Table 15: Test results conducted power measurement 802.11n HT-20

7.1.2 Conducted power measurements WLAN 5 GHz

802.11a		maximum average conducted output power [dBm]							
Band	Ch	6Mbps	9Mbps	12Mbps	18Mbps	24Mbps	36Mbps	48Mbps	54Mbps
5200	36	12.8	12.4	12.3	12.0	11.5	11.3	10.8	10.2
	40	12.7	12.3	12.2	11.7	11.4	11.1	10.7	10.0
	44	12.7	12.3	12.1	11.9	11.3	11.2	10.6	10.1
	48	12.6	12.2	12.1	11.5	11.3	11.1	10.4	10.0

Table 16: Test results conducted power measurement 802.11a

802.11n HT-20 / 802.11ac VHT-20 maximum average conducted output power [dBm]									
Band [MHz]	Ch	MCS-0 6.5Mbps	MCS-1 13Mbps	MCS-2 19.5Mbps	MCS-3 26Mbps	MCS-4 39Mbps	MCS-5 52Mbps	MCS-6 58.5Mbps	MCS-7 65Mbps
5200	36	12.6	12.4	12.0	11.9	11.1	10.7	10.1	8.8
	40	12.7	12.5	12.1	11.9	11.2	10.9	10.3	9.2
	44	12.6	12.4	11.9	11.8	11.1	10.8	10.2	9.1
	48	12.7	12.5	12.1	12.0	11.2	10.8	10.2	8.9

Table 17: Test results conducted power measurement 802.11n HT-20 / 802.11ac VHT-20

7.1.1 Conducted average power measurements Bluetooth 2.4 GHz

Channel	Frequency (MHz)	Average power (dBm)		
		GFSK	$\pi/4$ DQPSK	8-DPSK
0	2402	7.4	5.8	6.2
39	2441	6.9	5.2	5.8
78	2480	6.7	4.9	5.3

Table 18: Test results conducted average power measurement Bluetooth 2.4 GHz

Bluetooth LE 2450 MHz		
Channel	Frequency (MHz)	maximum power (dBm)
0	2402	3.4
19	2440	3.4
39	2480	2.0

Table 19: Test results conducted maximum average output power measurement Bluetooth LE 2.4 GHz

7.2 SAR test results

7.2.1 General description of test procedures

- The DUT is tested for WLAN using a test software to set test channels and maximum output power. For BLUETOOTH a CBT was used to set the test channels of the DUT.
- Test positions as described in the tables above are in accordance with the specified test standard.
- Tests in body position were performed in that configuration, which generates the highest time based averaged output power (see conducted power results).
- WLAN was tested in 802.11a/b mode with 1 MBit/s and 6 MBit/s.
- Required WLAN test channels were selected according to KDB 248227

7.2.2 Results overview

measured / extrapolated SAR numbers - Body worn - WLAN 2450 MHz														
Ch.	Freq. (MHz)	test cond.	Position 0mm	cond. P _{max} (dBm)		SAR _{1g} (W/kg)			SAR _{10g} (W/kg)			power drift (dB)	liquid (°C)	dist. (mm)
				decl.**	meas.	meas.	extrap.	100% DF	meas.	extrap.	100% DF			
1	2412	1Mbit/s	front	14.0	12.8	0.015	0.019	0.020	0.008	0.011	0.011	0.12	22.5	0
1	2412	1Mbit/s	left	14.0	12.8	0.151	0.199	0.203	0.078	0.102	0.105	-0.07	22.5	0
1	2412	1Mbit/s	top	14.0	12.8	0.399	0.526	0.537	0.175	0.231	0.235	-0.14	22.5	0
6	2437	1Mbit/s	top	14.0	12.5	0.379	0.535	0.546	0.168	0.237	0.242	0.03	22.5	0
11	2462	1Mbit/s	top	14.0	12.2	0.368	0.557	0.568	0.164	0.248	0.253	0.07	22.5	0

Table 20: Test results body worn SAR WLAN 2450 MHz
 (see max. SAR plot Annex B.1: WLAN 2450 MHz on page 33.)
 ** - maximum possible output power declared by manufacturer

measured / extrapolated SAR numbers - Body worn - WLAN 5 GHz														
Ch.	Freq. (MHz)	test cond.	Position 0mm	cond. P _{max} (dBm)		SAR _{1g} (W/kg)			SAR _{10g} (W/kg)			power drift (dB)	liquid (°C)	
				decl.**	meas.	meas.	extrap.	100% DF	meas.	extrap.	100% DF			
36	5180	6Mbit/s	top	13.5	12.8	0.326	0.383	0.391	0.114	0.134	0.137	0.10	22.8	
36	5180	6Mbit/s	left	13.5	12.8	0.313	0.368	0.375	0.102	0.120	0.122	-0.18	22.8	
36	5180	6Mbit/s	front	13.5	12.8	0.012	0.014	0.014	0.004	0.004	0.005	-0.19	22.8	

Table 21: Test results body worn SAR WLAN 5 GHz
 (see max. SAR plot Annex B.2: WLAN 5GHz on page 35.)
 ** - maximum possible output power declared by manufacturer

measured / extrapolated SAR numbers - Bluetooth 2450 MHz													
Ch.	Freq. (MHz)	Position 0mm	cond. P _{max} (dBm)		SAR _{1g} (W/kg)			SAR _{10g} (W/kg)			Power Drift	liquid (°C)	
			decl.**	meas.	meas.	extrap.	100% DF	measured	extrap.	100% DF			
0	2402	top	8.00	7.40	0.337	0.387	0.395	0.150	0.172	0.176	-0.06	22.5	
39	2441	top	8.00	6.90	0.178	0.229	0.234	0.078	0.078	0.079	-0.02	22.5	
78	2480	top	8.00	6.70	0.145	0.196	0.200	0.063	0.063	0.064	0.01	22.5	
0	2402	front	8.00	7.40	0.003	0.003	0.003	0.001	0.001	0.001	0.18	22.5	
0	2402	left	8.00	7.40	0.160	0.184	0.187	0.073	0.073	0.074	-0.16	22.5	

Table 22: Test results body worn SAR Bluetooth 2405 MHz
 (see max. SAR plot Annex B.3: BLUETOOTH 2450MHz on page 36.)
 ** - maximum possible output power declared by manufacturer

7.2.3 Multiple Transmitter Information

The following tables list information which is relevant for the decision if a simultaneous transmit evaluation is necessary according to FCC KDB 447498D01 General RF Exposure Guidance v05.

reported SAR BLUETOOTH LE and WLAN2.4GHz/5GHz, Σ SAR evaluation							
WLAN		2450MHz			5GHz		
		front	left	top	front	left	top
Bluetooth		0.020	0.203	0.568	0.014	0.375	0.391
front	0.003	0.023			0.017		
left	0.187		0.390			0.562	
top	0.395			0.963			0.786

Table 23: SAR_{max} BLUETOOTH LE and WLAN 2.4GHz / 5GHz, Σ SAR evaluation

Conclusion: Σ SAR < 1.6 W/kg

8 Test equipment and ancillaries used for tests

To simplify the identification of the test equipment and/or ancillaries which were used, the reporting of the relevant test cases only refer to the test item number as specified in the table below.

Equipment	Type	Manufacturer	Serial No.	Last Calibration	Frequency (months)
Dosimetric E-Field Probe	ES3DV3	Schmid & Partner Engineering AG	3320	January 14, 2016	12
Dosimetric E-Field Probe	EX3DV4	Schmid & Partner Engineering AG	3944	August 23, 2016	12
2450 MHz System Validation Dipole	D2450V2	Schmid & Partner Engineering AG	710	August 15, 2016	24
5 GHz System Validation Dipole	D5GHzV2	Schmid & Partner Engineering AG	1055	August 14, 2015	24
Data acquisition electronics	DAE3V1	Schmid & Partner Engineering AG	413	January 11, 2016	12
Data acquisition electronics	DAE3V1	Schmid & Partner Engineering AG	477	May 11, 2016	12
Software	DASY52 52.8.7	Schmid & Partner Engineering AG	---	N/A	--
SAM Twin Phantom V5.0	QD 000 P40 C	Schmid & Partner Engineering AG	1813	N/A	--
Network Analyser 300 kHz to 6 GHz	8753ES	Hewlett Packard)*	US39174436	January 29, 2015	24
Bluetooth Tester	CBT	Rohde & Schwarz	100313	September 22, 2016	24
Dielectric Probe Kit	85070C	Hewlett Packard	US99360146	N/A	12
Signal Generator	8671B	Hewlett Packard	2823A00656	January 29, 2015	24
Amplifier	25S1G4 (25 Watt)	Amplifier Research	20452	N/A	--
Power Meter	NRP	Rohde & Schwarz	101367	February 1, 2016	24
Power Meter Sensor	NRP Z22	Rohde & Schwarz	100227	February 1, 2016	12
Power Meter Sensor	NRP Z22	Rohde & Schwarz	100234	February 1, 2016	12
Directional Coupler	778D	Hewlett Packard	19171	February 1, 2016	12

)* : Network analyzer probe calibration against air, distilled water and a shorting block performed before measuring liquid parameters.

9 Observations

No observations exceeding those reported with the single test cases have been made.

Annex A: System performance check

Date/Time: 15.11.2016 11:43:32

SystemPerformanceCheck-D2450 MSL 2016-11-15

DUT: Dipole 2450 MHz; Type: D2450V2; Serial: 710

Communication System: UID 0, CW (0); Communication System Band: D2450 (2450.0 MHz); Frequency: 2450 MHz; Communication System PAR: 0 dB; PMF: 1

Medium parameters used: $f = 2450$ MHz; $\sigma = 1.978$ S/m; $\epsilon_r = 50.978$; $\rho = 1000$ kg/m³

Phantom section: Flat Section

Measurement Standard: DASYS

DASY5 Configuration:

- Probe: ES3DV3 - SN3320; ConvF(4.23, 4.23, 4.23); Calibrated: 14.01.2016;
- Sensor-Surface: 3mm (Mechanical Surface Detection), $z = 2.0, 32.0$
- Electronics: DAE3 Sn413; Calibrated: 11.01.2016
- Phantom: SAM front; Type: QD000P40CC; Serial: TP-1041
- DASY52 52.8.7(1137); SEMCAD X 14.6.10(7164)

MSL2450/d=10mm, Pin=1000 mW, dist=3.0mm/Area Scan (51x51x1): Interpolated

grid: $dx=1.500$ mm, $dy=1.500$ mm

Maximum value of SAR (interpolated) = 95.1 W/kg

MSL2450/d=10mm, Pin=1000 mW, dist=3.0mm/Zoom Scan (7x7x7)/Cube 0:

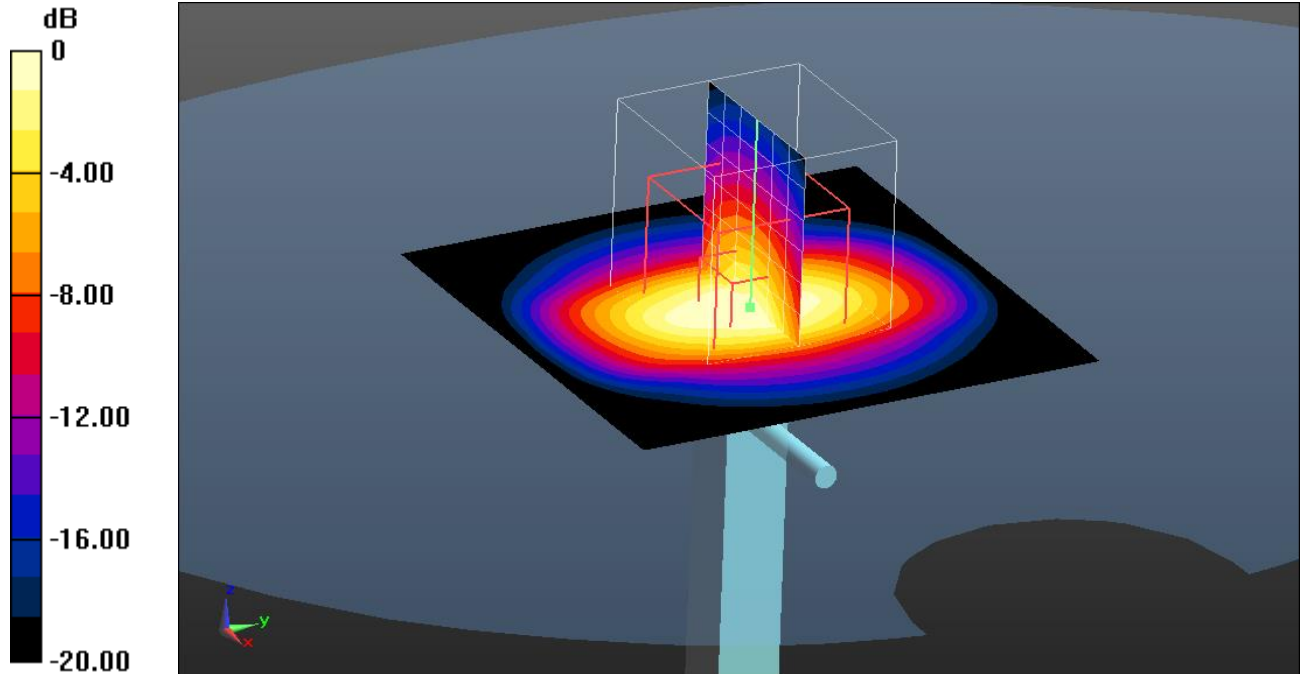
Measurement grid: $dx=5$ mm, $dy=5$ mm, $dz=5$ mm

Reference Value = 203.8 V/m; Power Drift = -0.11 dB

Peak SAR (extrapolated) = 109 W/kg

SAR(1 g) = 52.4 W/kg; SAR(10 g) = 24.1 W/kg

Maximum value of SAR (measured) = 70.0 W/kg



0 dB = 70.0 W/kg = 18.45 dBW/kg

Additional information:

ambient temperature: 22.9°C; liquid temperature: 22.5°C

SystemPerformanceCheck-D5GHz body 2016-11-16

DUT: Dipole 5GHz; Type: D5GHzV2; Serial: 1055

Communication System: UID 0, CW (0); Communication System Band: D5GHz (5000.0 - 6000.0 MHz);

Frequency: 5200 MHz; Communication System PAR: 0 dB; PMF: 1

Medium parameters used: $f = 5200$ MHz; $\sigma = 5.255$ S/m; $\epsilon_r = 48.142$; $\rho = 1000$ kg/m³

Phantom section: Flat Section

Measurement Standard: DASY5

DASY5 Configuration:

- Probe: EX3DV4 - SN3944; ConvF(4.85, 4.85, 4.85); Calibrated: 23.08.2016;
- Sensor-Surface: 2mm (Mechanical Surface Detection), $z = 1.0, 23.0$
- Electronics: DAE3 Sn477; Calibrated: 11.05.2016
- Phantom: SAM front; Type: QD000P40CC; Serial: TP-1041
- DASY52 52.8.7(1137); SEMCAD X 14.6.10(7164)

MSL 5GHz/d=10mm, Pin=100mW 5.2GHz/Area Scan (61x61x1): Interpolated grid:

$dx=1.000$ mm, $dy=1.000$ mm

Maximum value of SAR (interpolated) = 15.6 W/kg

MSL 5GHz/d=10mm, Pin=100mW 5.2GHz/Zoom Scan (8x8x12)/Cube 0:

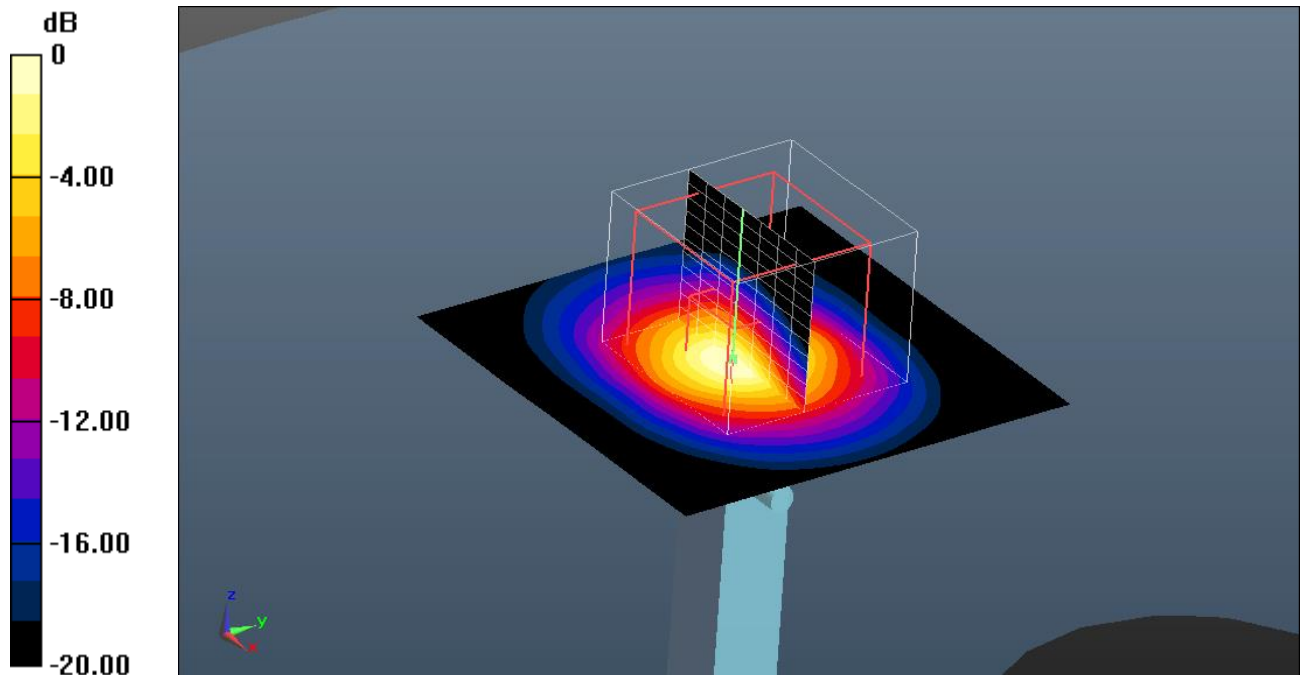
Measurement grid: $dx=4$ mm, $dy=4$ mm, $dz=2$ mm

Reference Value = 60.141 V/m; Power Drift = -0.13 dB

Peak SAR (extrapolated) = 30.3 W/kg

SAR(1 g) = 7.44 W/kg; SAR(10 g) = 2.06 W/kg

Maximum value of SAR (measured) = 15.5 W/kg



0 dB = 15.5 W/kg = 11.90 dBW/kg

Additional information:

ambient temperature: 23.4°C; liquid temperature: 22.8°C

Annex B: DASY5 measurement results

SAR plots for the **highest measured SAR** in each exposure configuration, wireless mode and frequency band combination according to FCC KDB 865664 D02

Annex B.1: WLAN 2450 MHz

Date/Time: 15.11.2016 15:09:51

FCC_EN62209-2 WLAN2450 body worn

DUT: FLIR; Type: E7850 ; Serial: 78100214

Communication System: UID 0, WLAN 2450 (0); Communication System Band: 2.4 GHz; Frequency: 2412 MHz; Communication System PAR: 0 dB; PMF: 1

Medium parameters used: $f = 2412$ MHz; $\sigma = 1.934$ S/m; $\epsilon_r = 51.082$; $\rho = 1000$ kg/m³

Phantom section: Flat Section

Measurement Standard: DASY5

DASY5 Configuration:

- Probe: ES3DV3 - SN3320; ConvF(4.23, 4.23, 4.23); Calibrated: 14.01.2016;
- Sensor-Surface: 4mm (Mechanical Surface Detection (Locations From Previous Scan Used)), Sensor-Surface: 4mm (Mechanical Surface Detection), $z = -3.0, 32.0$
- Electronics: DAE3 Sn413; Calibrated: 11.01.2016
- Phantom: SAM front; Type: QD000P40CC; Serial: TP-1041
- DASY52 52.8.7(1137); SEMCAD X 14.6.10(7164)

MSL2450/Top side Low 0mm/Area Scan (151x131x1): Interpolated grid: $dx=1.000$ mm, $dy=1.000$ mm

Maximum value of SAR (interpolated) = 0.481 W/kg

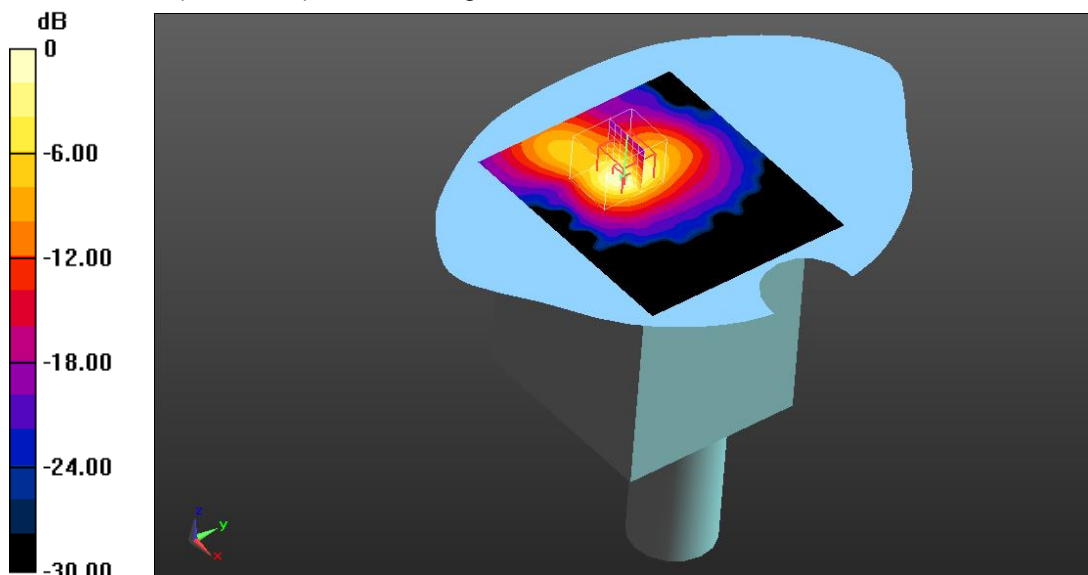
MSL2450/Top side Low 0mm/Zoom Scan (7x9x7)/Cube 0: Measurement grid: $dx=5$ mm, $dy=5$ mm, $dz=5$ mm

Reference Value = 15.197 V/m; Power Drift = -0.14 dB

Peak SAR (extrapolated) = 0.858 W/kg

SAR(1 g) = 0.399 W/kg; SAR(10 g) = 0.175 W/kg

Maximum value of SAR (measured) = 0.460 W/kg



0 dB = 0.460 W/kg = -3.37 dBW/kg

Additional information:

position or distance of DUT to the phantom: 0 mm

ambient temperature: 22.9°C; liquid temperature: 22.5°C

FCC_EN62209-2 WLAN2450 body worn

DUT: FLIR; Type: E7850 ; Serial: 78100214

Communication System: UID 0, WLAN 2450 (0); Communication System Band: 2.4 GHz; Frequency: 2462 MHz; Communication System PAR: 0 dB; PMF: 1

Medium parameters used: $f = 2462$ MHz; $\sigma = 1.995$ S/m; $\epsilon_r = 50.995$; $\rho = 1000$ kg/m³

Phantom section: Flat Section

Measurement Standard: DASYS5

DASY5 Configuration:

- Probe: ES3DV3 - SN3320; ConvF(4.23, 4.23, 4.23); Calibrated: 14.01.2016;
- Sensor-Surface: 4mm (Mechanical Surface Detection), $z = -3.0, 32.0$
- Electronics: DAE3 Sn413; Calibrated: 11.01.2016
- Phantom: SAM front; Type: QD000P40CC; Serial: TP-1041
- DASY52 52.8.7(1137); SEMCAD X 14.6.10(7164)

MSL2450/Top side high 0mm/Area Scan (151x131x1): Interpolated grid: $dx=1.000$ mm, $dy=1.000$ mm

Maximum value of SAR (interpolated) = 0.429 W/kg

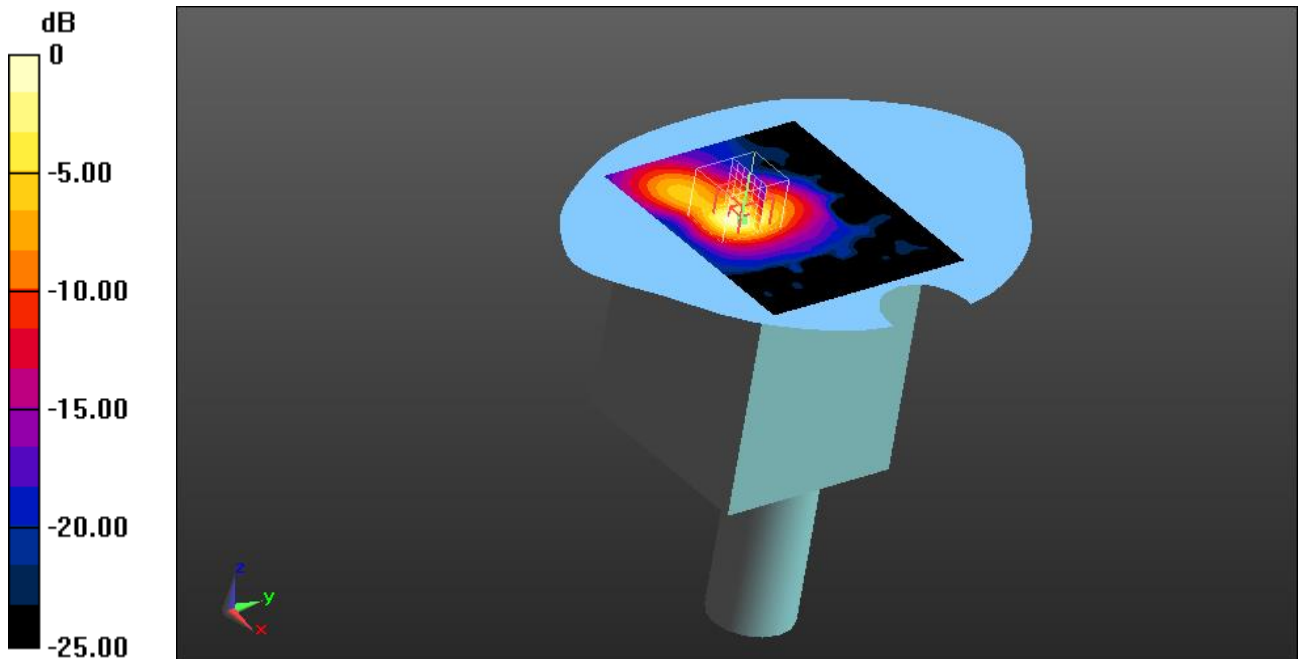
MSL2450/Top side high 0mm/Zoom Scan (7x9x7)/Cube 0: Measurement grid: $dx=5$ mm, $dy=5$ mm, $dz=5$ mm

Reference Value = 13.528 V/m; Power Drift = 0.07 dB

Peak SAR (extrapolated) = 0.781 W/kg

SAR(1 g) = 0.368 W/kg; SAR(10 g) = 0.164 W/kg

Maximum value of SAR (measured) = 0.424 W/kg



0 dB = 0.424 W/kg = -3.73 dBW/kg

Additional information:

position or distance of DUT to the phantom: 0 mm

ambient temperature: 22.9°C; liquid temperature: 22.5°C

Annex B.2: WLAN 5GHz

Date/Time: 16.11.2016 15:39:44

FCC_EN62209-2 WLAN5 GHz body worn

DUT: FLIR; Type: E7850 ; Serial: 78100214

Communication System: UID 0, WLAN 5GHz (0); Communication System Band: 5 GHz Band; Frequency: 5180 MHz; Communication System PAR: 0 dB; PMF: 1

Medium parameters used: $f = 5180$ MHz; $\sigma = 5.244$ S/m; $\epsilon_r = 48.188$; $\rho = 1000$ kg/m³

Phantom section: Flat Section

Measurement Standard: DASYS

DASY5 Configuration:

- Probe: EX3DV4 - SN3944; ConvF(4.85, 4.85, 4.85); Calibrated: 23.08.2016;
- Sensor-Surface: 1.4mm (Mechanical Surface Detection), z = -4.0, 23.0
- Electronics: DAE3 Sn477; Calibrated: 11.05.2016
- Phantom: SAM front; Type: QD000P40CC; Serial: TP-1041
- DASY52 52.8.7(1137); SEMCAD X 14.6.10(7164)

MSL5000/Top side Ch36 0mm/Area Scan (151x131x1): Interpolated grid: dx=1.000 mm, dy=1.000 mm

Maximum value of SAR (interpolated) = 0.747 W/kg

MSL5000/Top side Ch36 0mm/Zoom Scan (9x9x12)/Cube 0: Measurement grid:

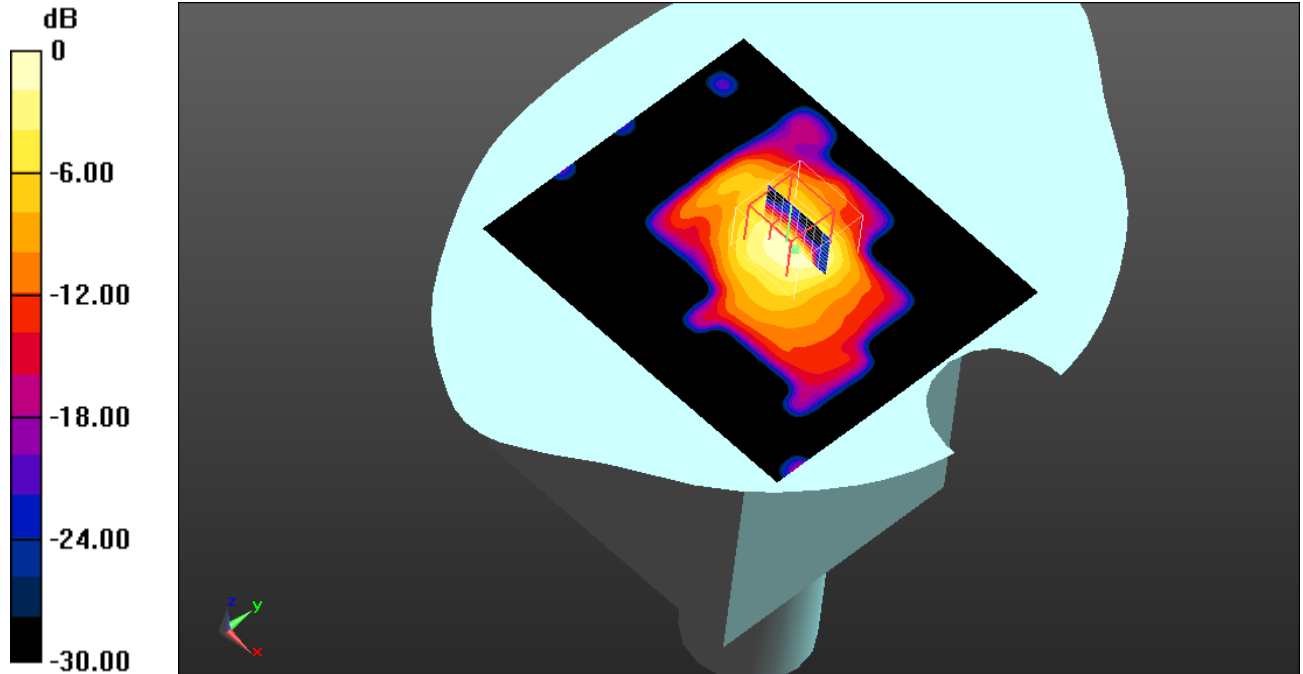
dx=4mm, dy=4mm, dz=2mm

Reference Value = 0 V/m; Power Drift = 0.10 dB

Peak SAR (extrapolated) = 1.20 W/kg

SAR(1 g) = 0.326 W/kg; SAR(10 g) = 0.114 W/kg

Maximum value of SAR (measured) = 0.748 W/kg



0 dB = 0.748 W/kg = -1.26 dBW/kg

Additional information:

position or distance of DUT to the phantom: 0 mm

ambient temperature: 23.4°C; liquid temperature: 22.8°C

Annex B.3: BLUETOOTH 2450MHz

Date/Time: 15.11.2016 15:46:53

FCC_EN62209-2 Bluetooth 2450 body worn

DUT: FLIR; Type: E7850 ; Serial: 78100214

Communication System: UID 0, Bluetooth 87.5% (0); Communication System Band: BT; Frequency: 2402 MHz; Communication System PAR: 0.56 dB; PMF: 1.0666

Medium parameters used: $f = 2402$ MHz; $\sigma = 1.92$ S/m; $\epsilon_r = 51.075$; $\rho = 1000$ kg/m³

Phantom section: Flat Section

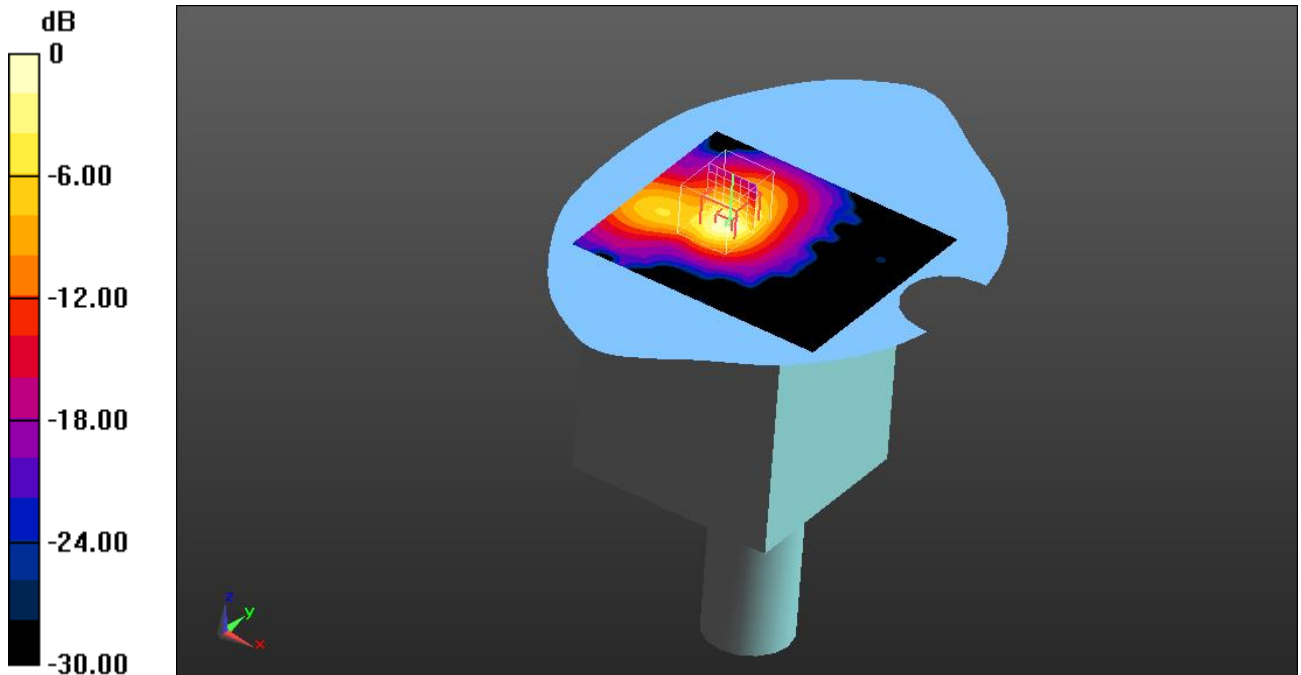
Measurement Standard: DASYS

DASY5 Configuration:

- Probe: ES3DV3 - SN3320; ConvF(4.23, 4.23, 4.23); Calibrated: 14.01.2016;
- Sensor-Surface: 4mm (Mechanical Surface Detection (Locations From Previous Scan Used)), Sensor-Surface: 4mm (Mechanical Surface Detection), $z = -3.0, 32.0$
- Electronics: DAE3 Sn413; Calibrated: 11.01.2016
- Phantom: SAM front; Type: QD000P40CC; Serial: TP-1041
- DASY52 52.8.7(1137); SEMCAD X 14.6.10(7164)

MSL2450/Top Low 0mm/Area Scan (151x131x1): Interpolated grid: $dx=1.000$ mm, $dy=1.000$ mm
 Maximum value of SAR (interpolated) = 0.401 W/kg

MSL2450/Top Low 0mm/Zoom Scan (7x9x7)/Cube 0: Measurement grid: $dx=5$ mm, $dy=5$ mm, $dz=5$ mm
 Reference Value = 14.275 V/m; Power Drift = -0.06 dB
 Peak SAR (extrapolated) = 0.720 W/kg
SAR(1 g) = 0.337 W/kg; SAR(10 g) = 0.150 W/kg
 Maximum value of SAR (measured) = 0.395 W/kg



0 dB = 0.395 W/kg = -4.03 dBW/kg

Additional information:

position or distance of DUT to the phantom: 0 mm

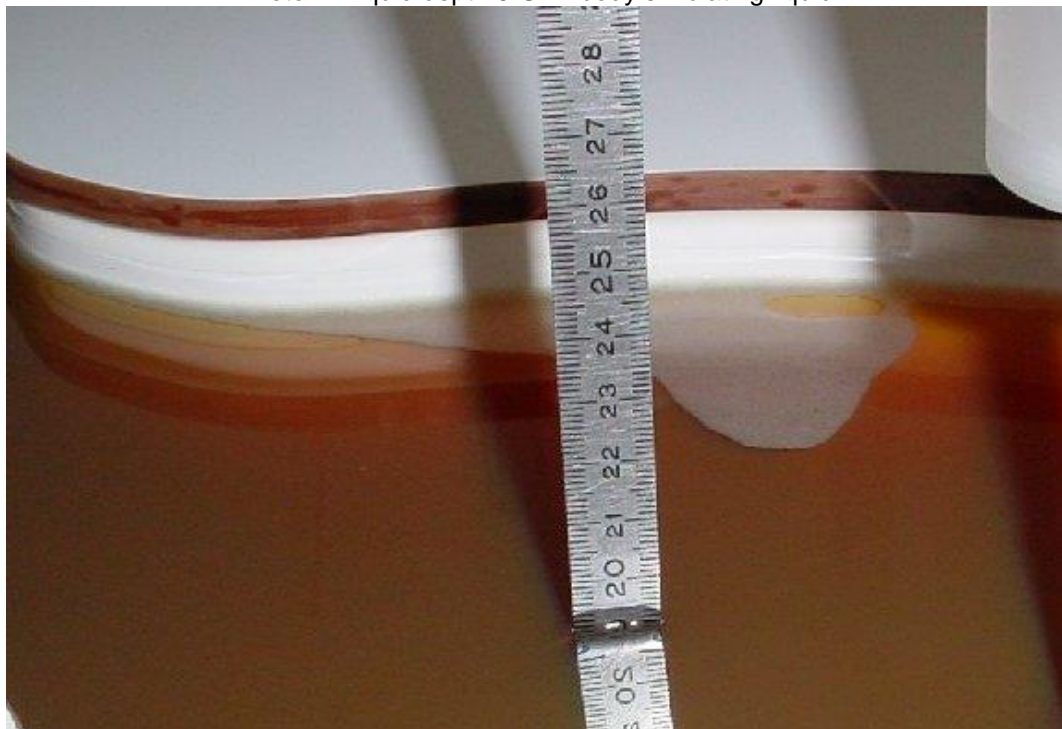
ambient temperature: 22.9°C; liquid temperature: 22.5°C

Annex B.4: Liquid depth

Photo 1: Liquid depth 2450 MHz body simulating liquid



Photo 2: Liquid depth 5 GHz body simulating liquid



Annex C: Photo documentation

Photo documentation is described in the additional document:

Appendix to test report no. 1-1390/16-01-08-A Photo documentation

Annex D: Calibration parameters

Calibration parameters are described in the additional document:

Appendix to test report no. 1-1390/16-01-08-A Calibration data, Phantom certificate and detail information of the DASY5 System

Annex E: RF Technical Brief Cover Sheet acc. to RSS-102 Annex A

- 1. COMPANY NUMBER: **5306A**
- 2. PRODUCT MARKETING NAME (PNM): **E75, E85, E95**
- 3. HARDWARE VERSION IDENTIFICATION NO. (HVIN): **FLIR-E7850**
- 4. FIRMWARE VERSION IDENTIFICATION NO. (FVIN): --
- 5. HOST MARKETING NAME (HMN): --
- 6. IC CERTIFICATION NUMBER: **5306A-FLIRE7850**
- 7. APPLICANT: **FLIR Systems AB**

8. SAR/RF EXPOSURE TEST LABORATORY: **CTC advanced GmbH**

9. TYPE OF EVALUATION:

(a) SAR Evaluation: **Device is not used in the Vicinity of the Human Head**

(b) SAR Evaluation: **Body-Worn Device**

- Multiple transmitters: Yes No
- Evaluated against exposure limits: General Public Use Controlled Use
- Duty cycle used in evaluation: 100 %
- Standard used for evaluation:

RSS-102 Issue 5	(2015-03)	IEEE C95-3	(2002)
IEEE 1528-2013	(2014-06)	IEEE C95-1	(2005)
Safety Code No.6	(2015-06)	IEC 62209-2	(2010)

KDBs and further information follow in separate table below.

- SAR value: **0.568 W/kg.** Measured Computed Calculated

(c) SAR Evaluation: **Limb-Worn Device**

- Multiple transmitters: Yes No
- Evaluated against exposure limits: General Public Use Controlled Use
- Duty cycle used in evaluation: 100%
- Standard used for evaluation:

RSS-102 Issue 5	(2015-03)	IEEE C95-3	(2002)
IEEE 1528-2013	(2014-06)	IEEE C95-1	(2005)
Safety Code No.6	(2015-06)	IEC 62209-2	(2010)

KDBs and further information follow in separate table below.

- SAR value: **0.253 W/kg.** Measured Computed Calculated

Annex A.1: Declaration of RF Exposure Compliance Annex B

ATTESTATION: I attest that the information provided in Annex E: is correct; that a Technical Brief was prepared and the information it contains is correct; that the device evaluation was performed or supervised by me; that applicable measurement methods and evaluation methodologies have been followed and that the device meets the SAR and/or RF exposure limits of RSS-102.

Signature:

NAME : **Alexander Hnatovskiy**

TITLE : Dipl.-Ing. (FH)

COMPANY : CTC advanced GmbH

PRODUCT MARKETING NAME (PMN): **E75, E85, E95**

HARDWARE VERSION IDENTIFICATION NO. (HVIN): **FLIR-E7850**

FIRMWARE VERSION IDENTIFICATION NO. (FVIN): --

HOST MARKETING NAME (HMN): --

IC CERTIFICATION NUMBER: 5306A-FLIRE7850

Test Standard	Version	FCC KDBs	Version
IEEE 1528-2003	2003-04	KDB 865664D01v01r03	February 7, 2014
IEEE 1528-2013	2014-06	KDB 447498D01v05r02	February 7, 2014
RSS-102 Issue 5	2015-04	KDB 648474D04v01r02	December 4, 2013
Canada's Safety Code No. 6	2015-03	KDB 248227D01v02r01	June 8, 2015
IEEE Std. C95-3	2002		
IEEE Std. C95-1	2005		
IEC 62209-2	2010		

Annex B: Document History

Version	Applied Changes	Date of Release
	Initial Release	2017-02-01
-A	removed WLAN 5.3GHz from test report	2017-02-15

Annex C: Further Information**Glossary**

DTS	-	Distributed Transmission System
DUT	-	Device under Test
EUT	-	Equipment under Test
FCC	-	Federal Communication Commission
FCC ID	-	Company Identifier at FCC
HW	-	Hardware
IC	-	Industry Canada
Inv. No.	-	Inventory number
N/A	-	not applicable
PCE	-	Personal Consumption Expenditure
OET	-	Office of Engineering and Technology
SAR	-	Specific Absorption Rate
S/N	-	Serial Number
SW	-	Software
UNII	-	Unlicensed National Information Infrastructure