

External Internal photos FLIR-E1330 camera.



Figure 1 FLIR-E1330 Right side.



Figure 2 FLIR-E1330 Left side.



Figure 3 FLIR-E1330, Back side.



Figure 4 FLIR-E1330 Front.





Figure 5 FLIR-E1330 Top side.

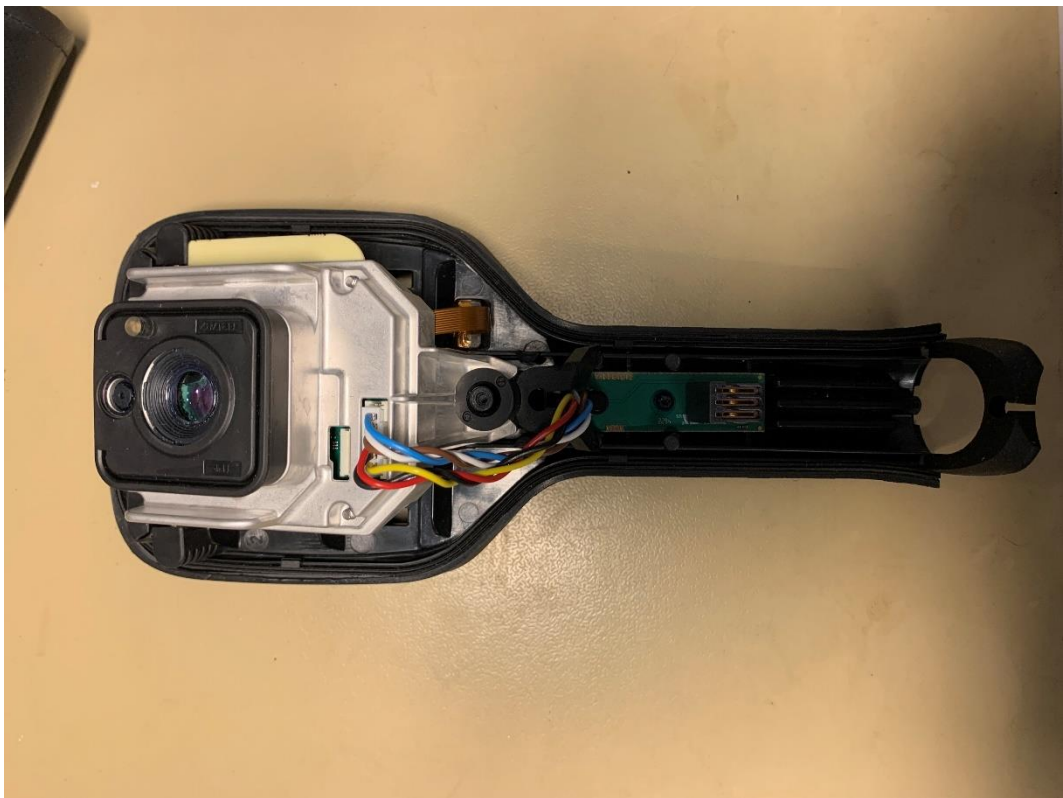


Figure 6 Camera without front cover.



Figure 7 Camera core, front.



Figure 8 Camera core.

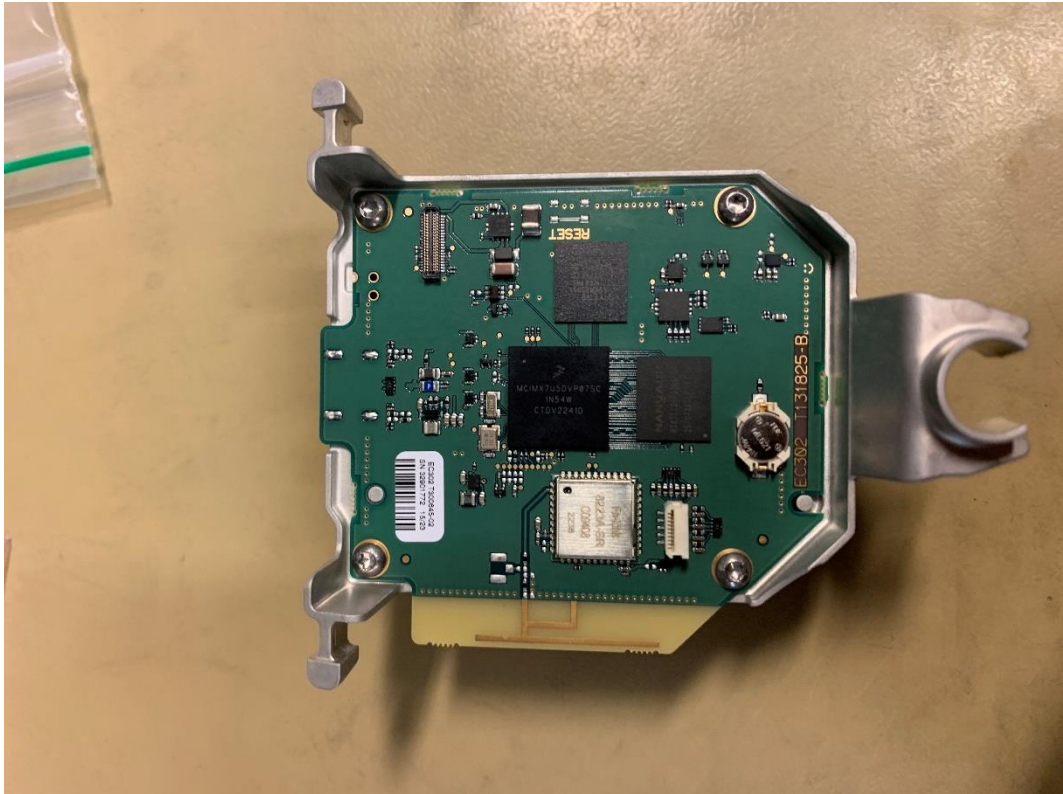


Figure 9 Camera core with EC302 computer board.



Figure 10 EC302, PIFA antenna.



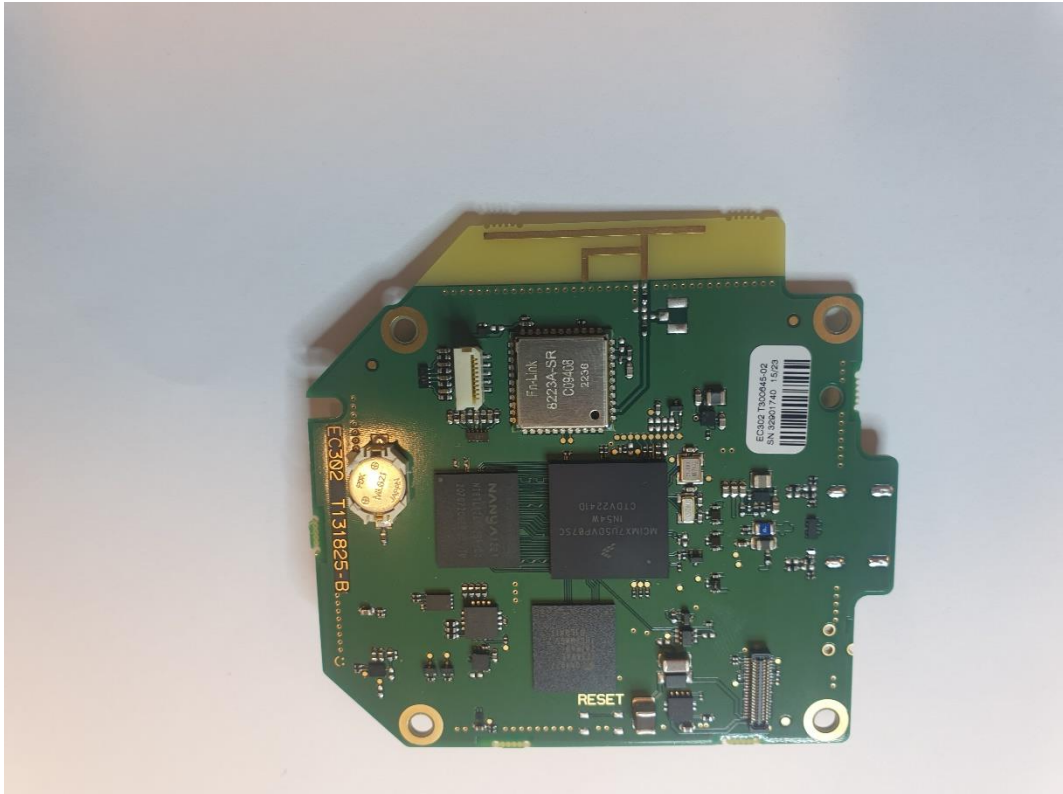


Figure 11 EC302, Computer Board.

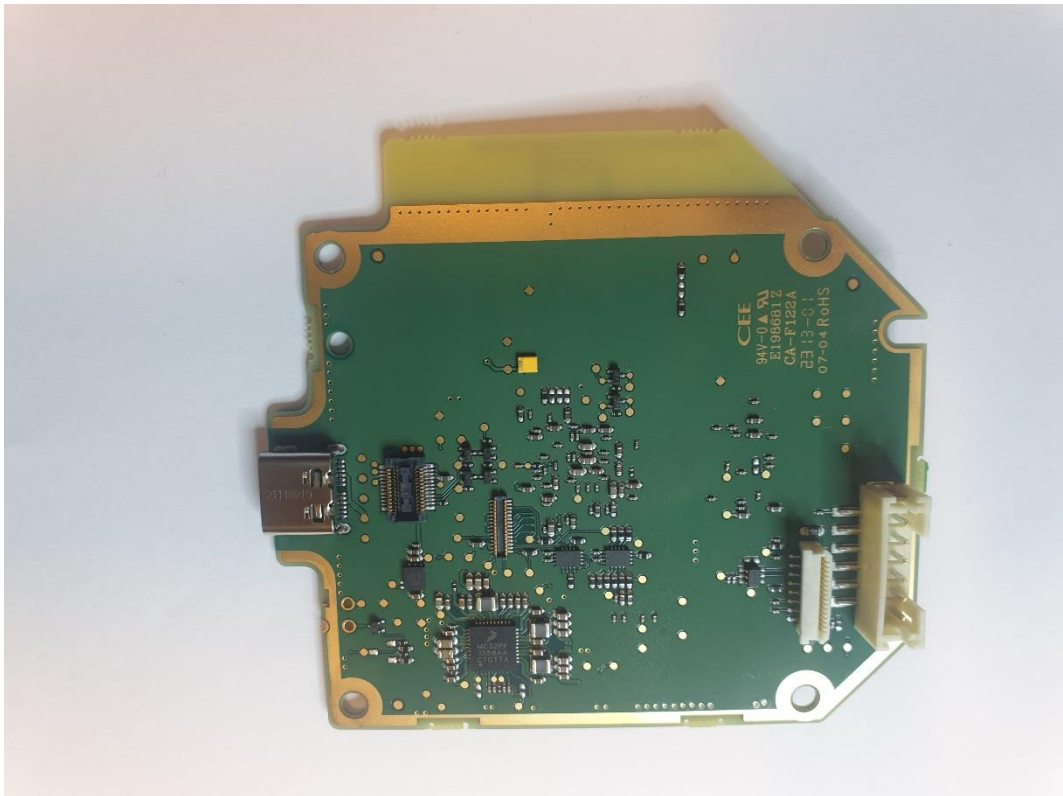


Figure 12 EC302, Computer Board.



Figure 13 RASP, Detector Borad.



Figure 14 RASP, Detector Board.



Figure 15 Keypad.

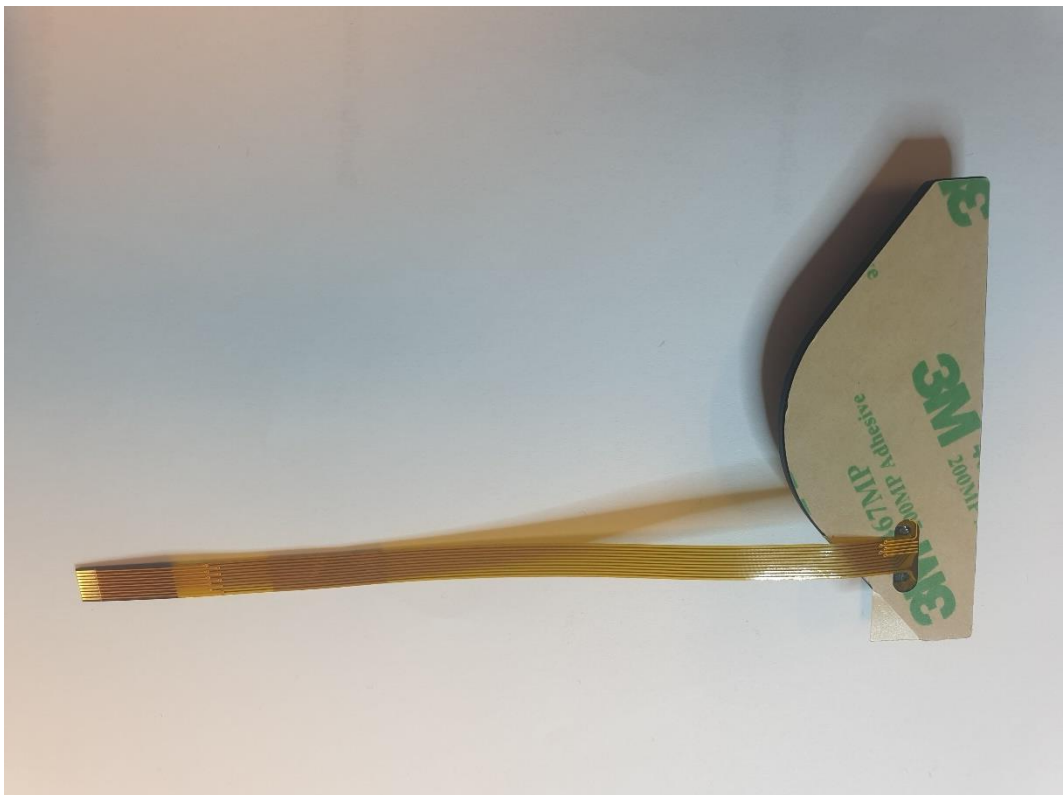


Figure 16 Keypad.



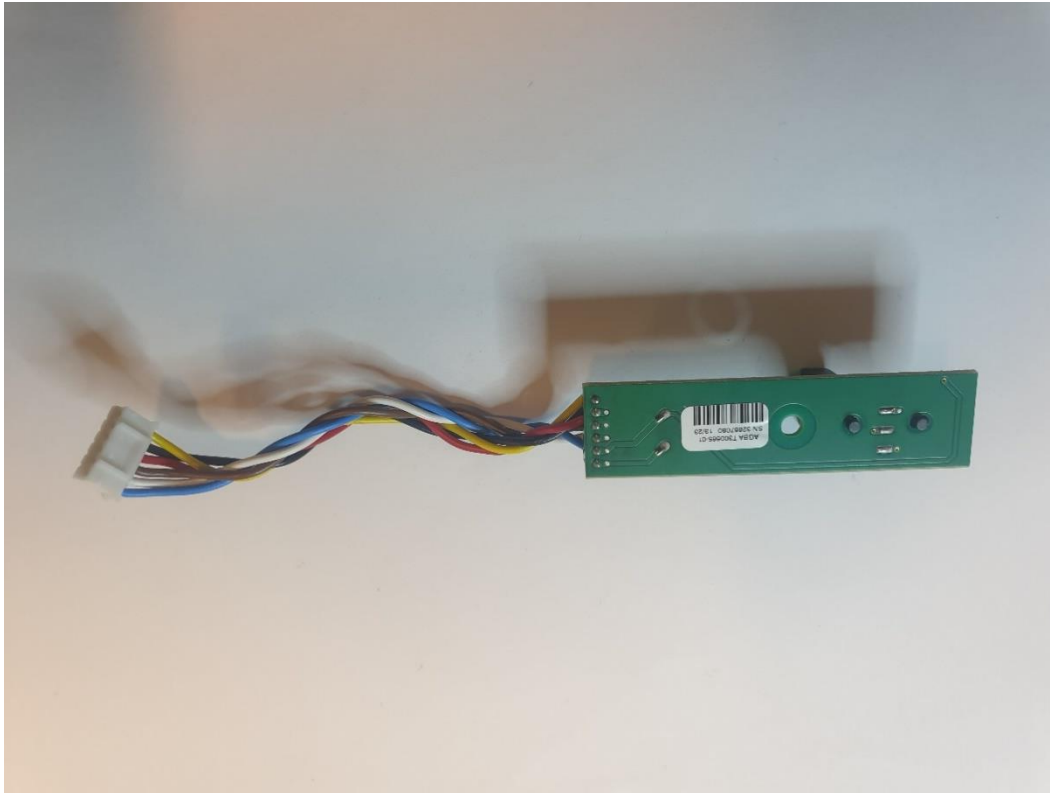


Figure 17 AGBA, Battery connector Board.

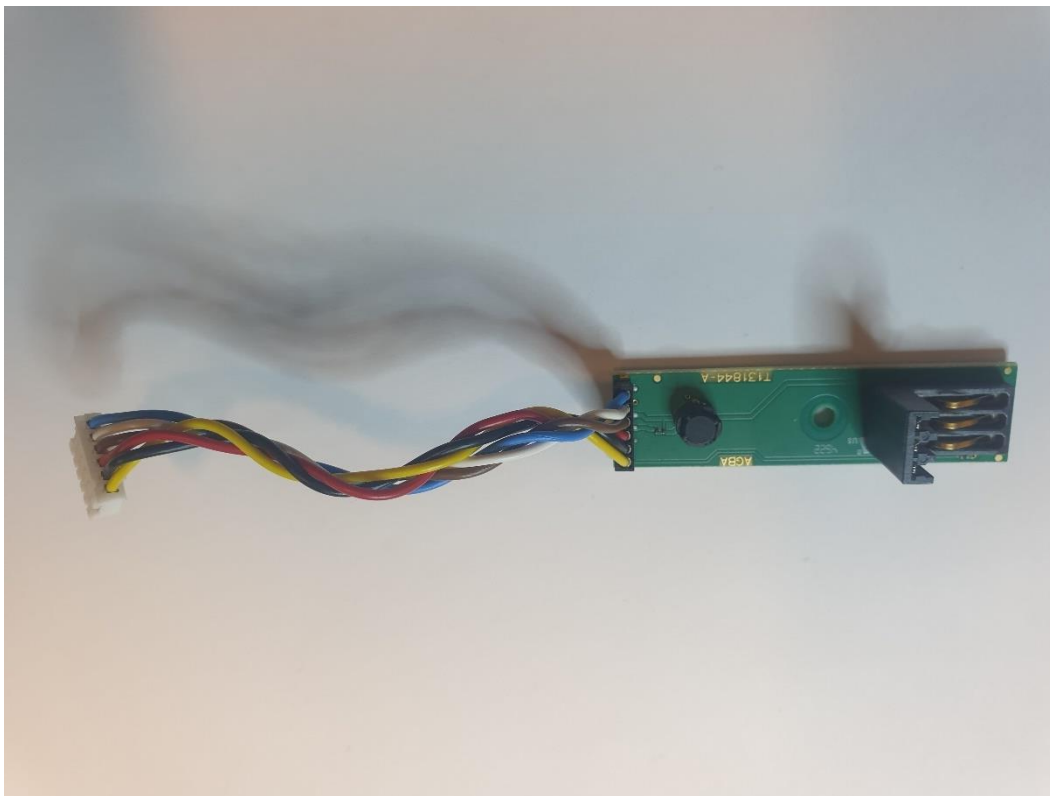


Figure 18 AGBA, Battery Connector Board.



Figure 19 Detector Module, front side.



Figure 20 Detector Module, Back side.



Figure 21 Visual Camera Module.

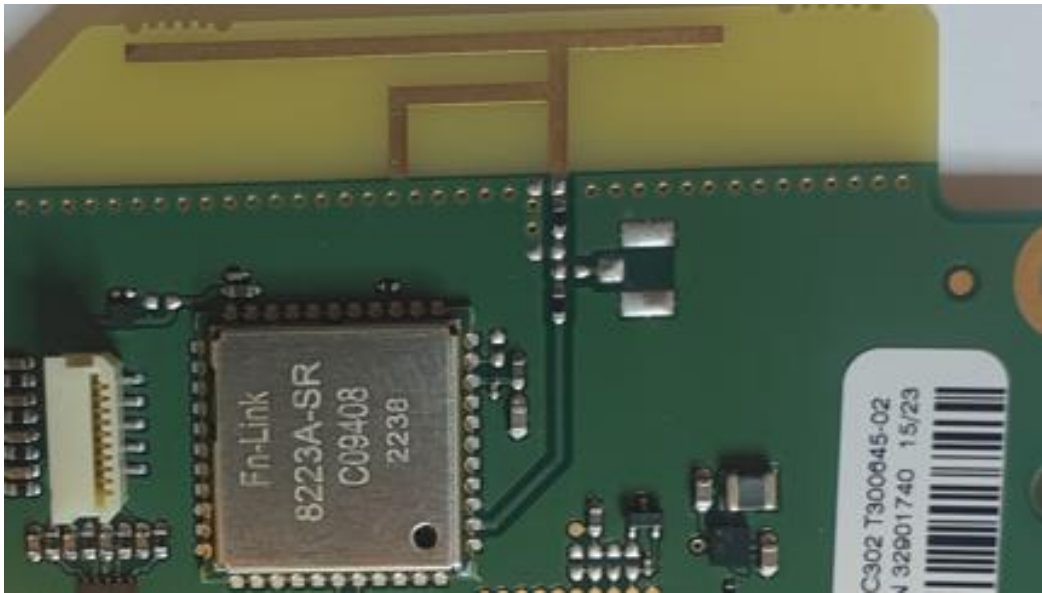
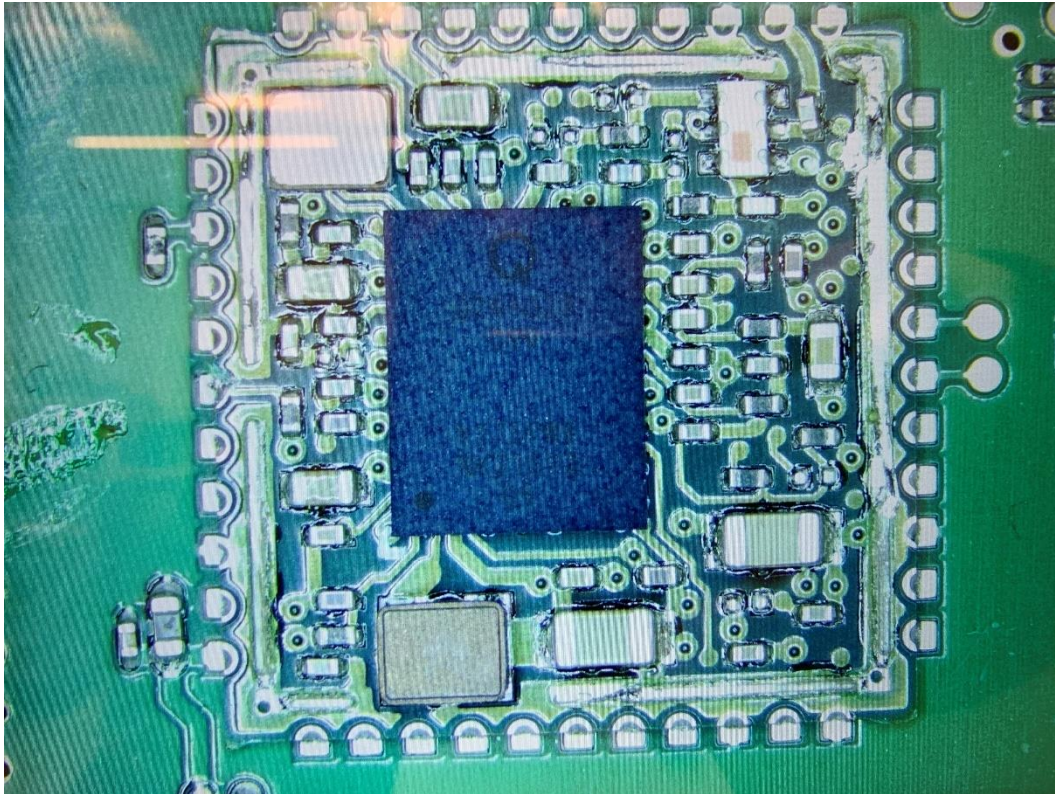


Figure 22 Radio Module Fn-Link 8223A-SR including Antenna.





*Figure 23 Radio Module FN-Link 8223A-SR, without cover.*