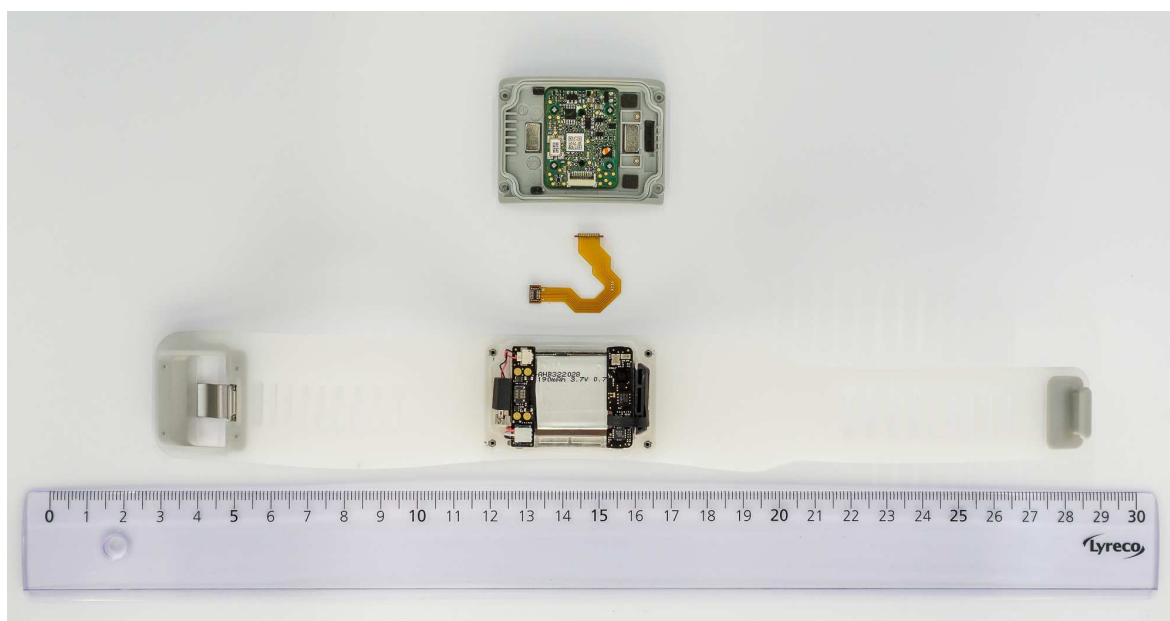


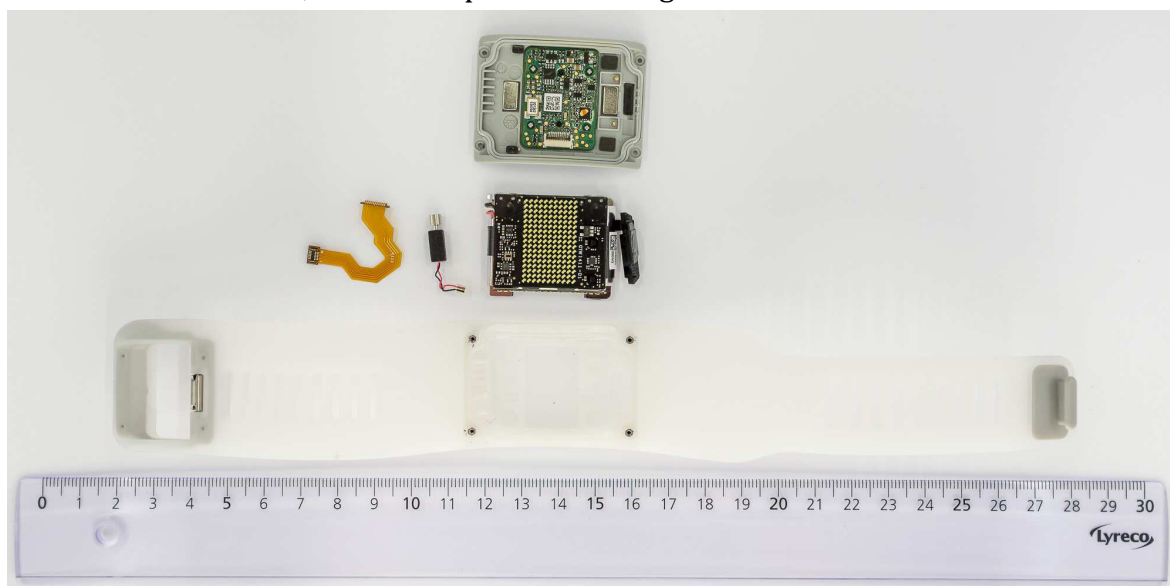
Fit Smart IOL90 Internal pictures

FCC ID:ZLGFS

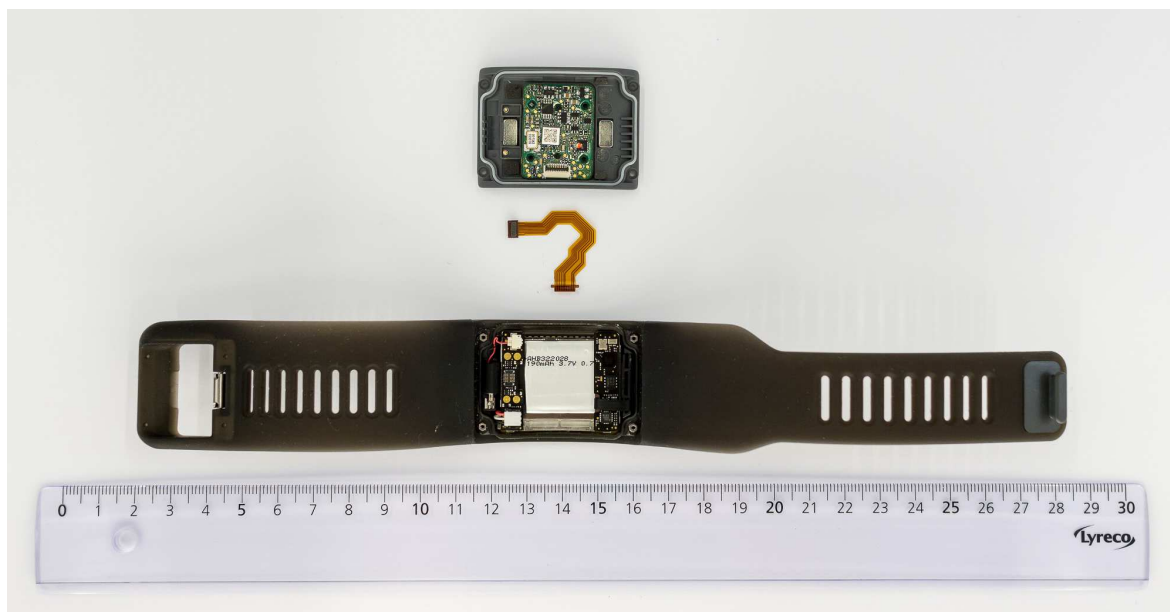
White variant, back side of opened



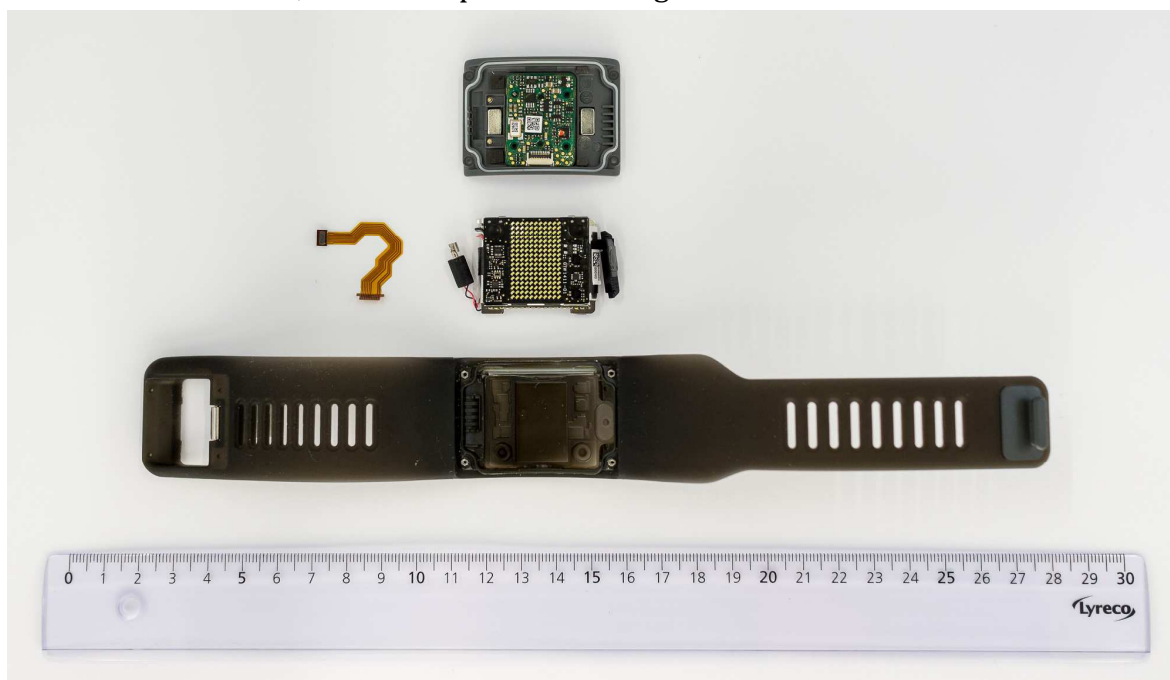
White variant, back side opened with engine removed and OHR sensor



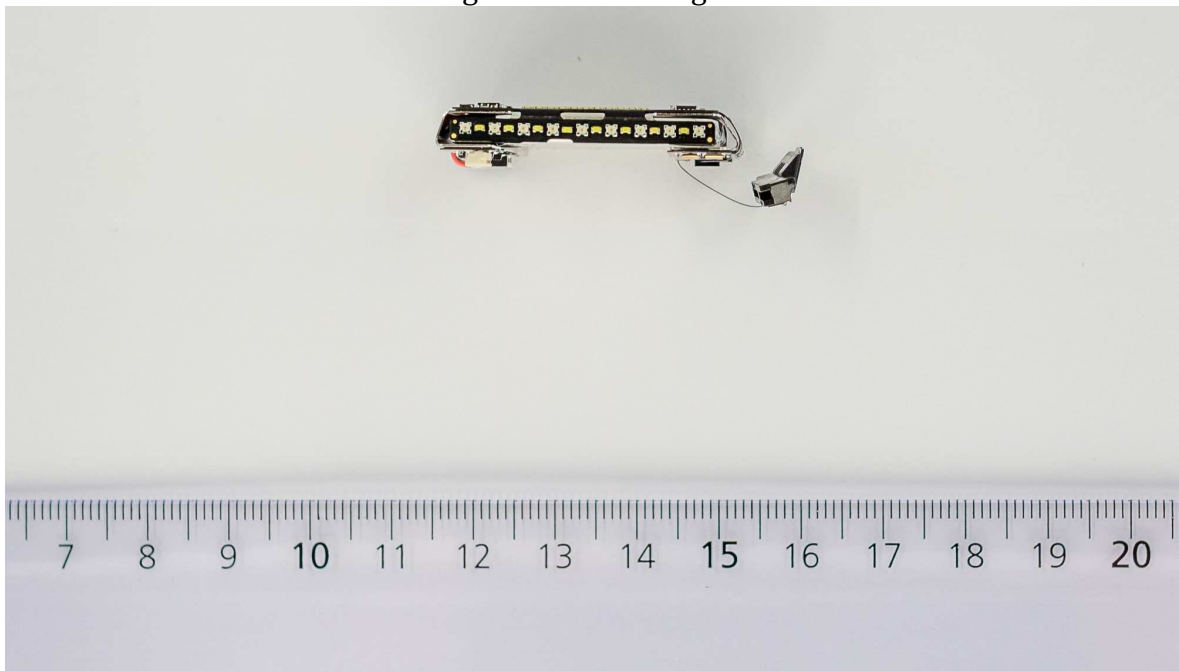
Black variant, back side of opened



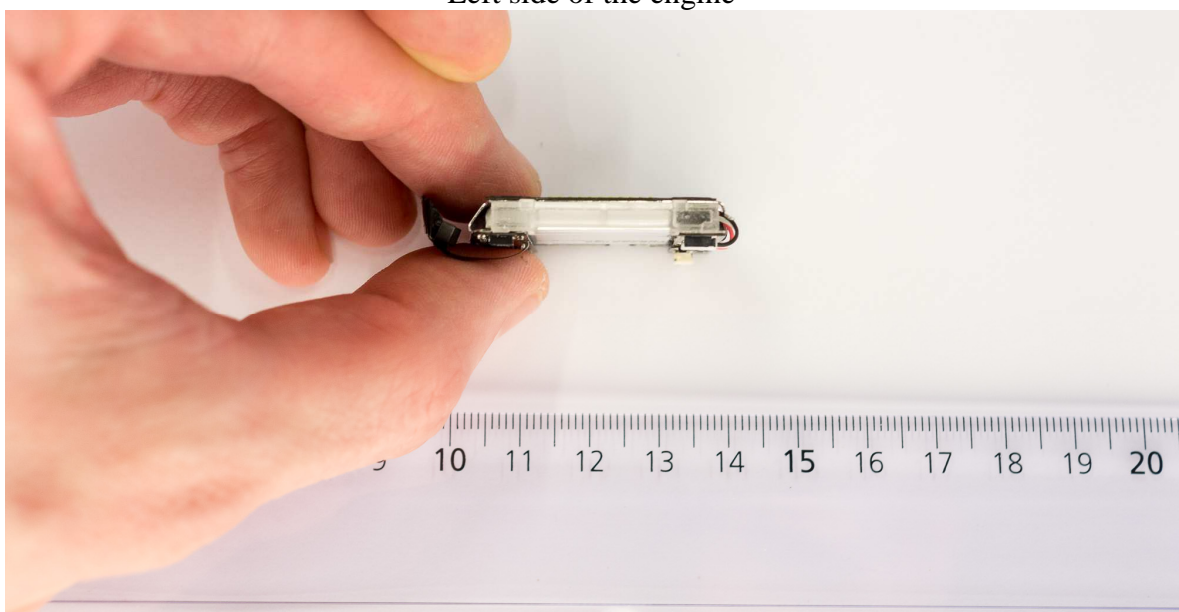
Black variant, back side opened with engine removed and OHR sensor



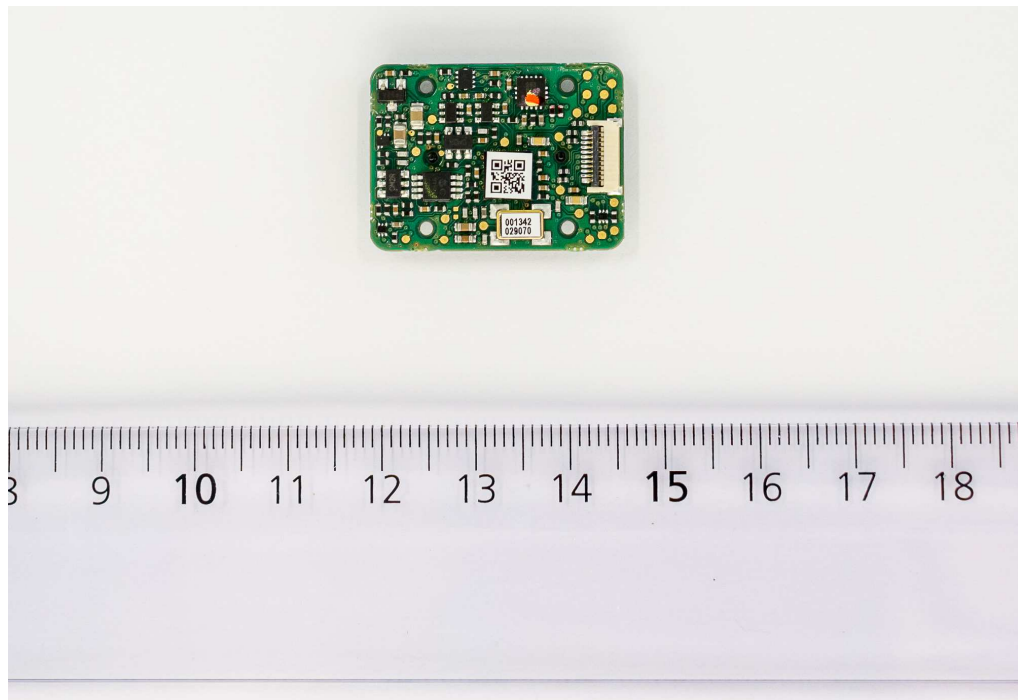
Right side of the engine



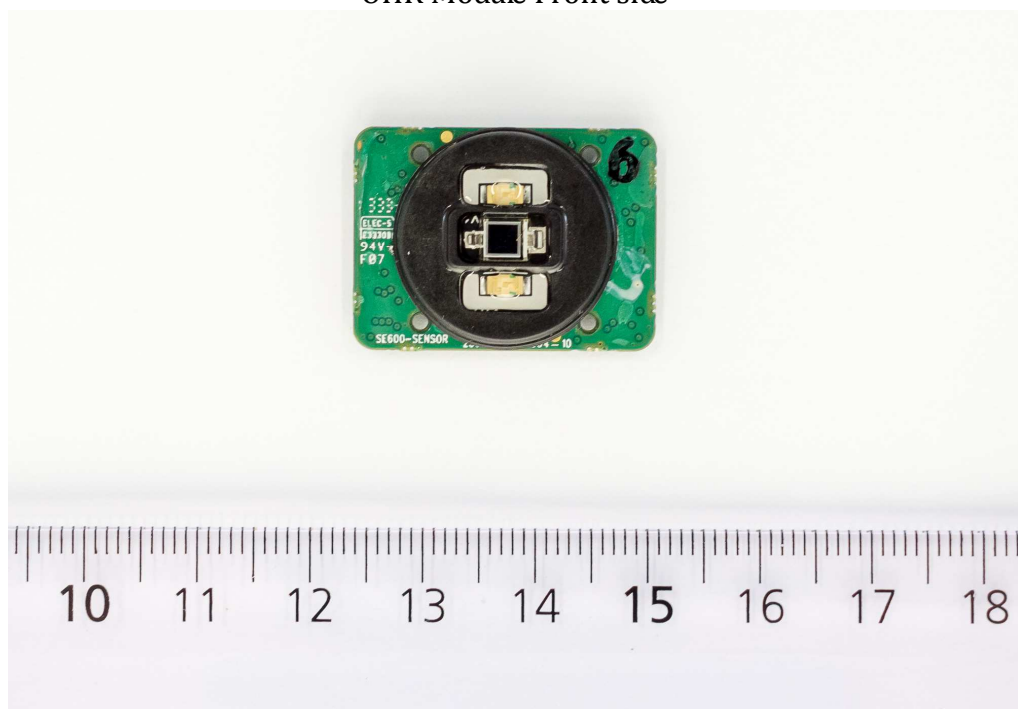
Left side of the engine



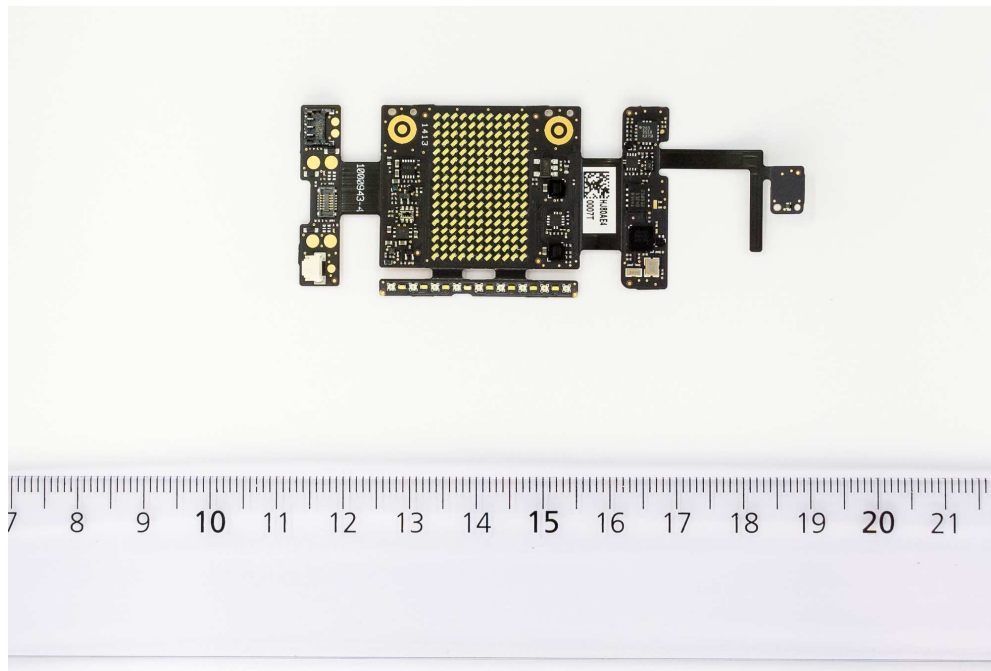
OHR Module back side



OHR Module Front side



Front side of unfolded PCB



Back side of unfolded PCB

