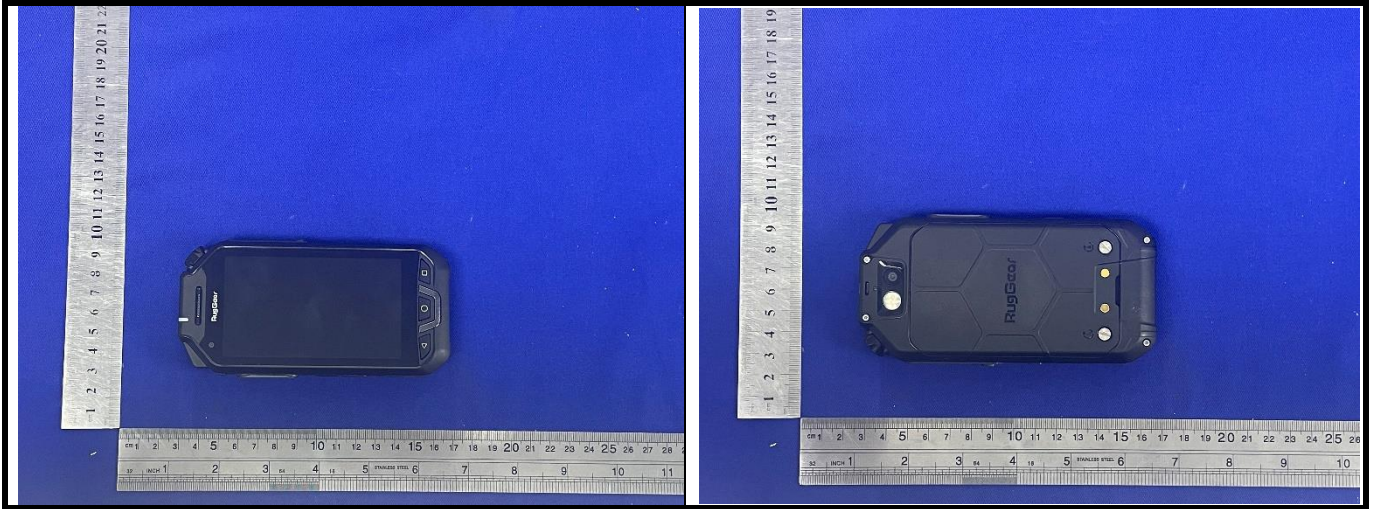
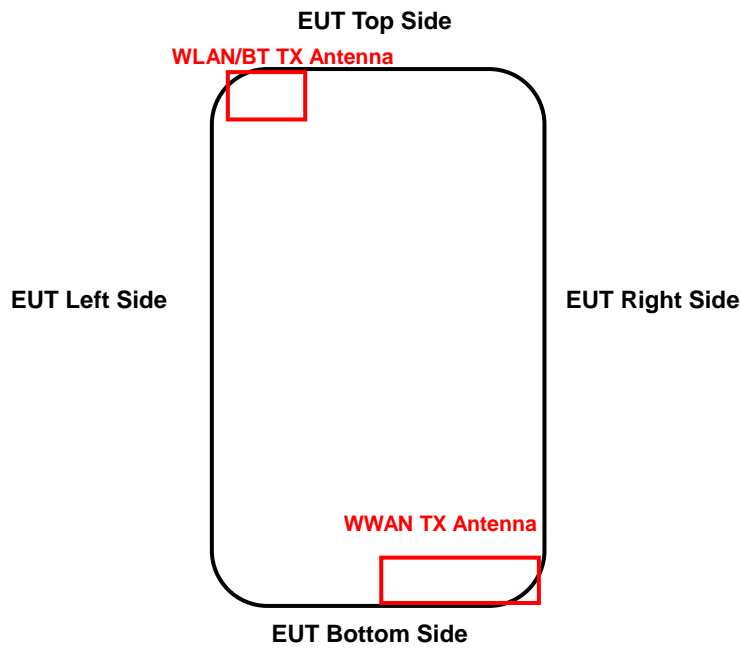


<Photographs of EUT>



<Antenna Location>



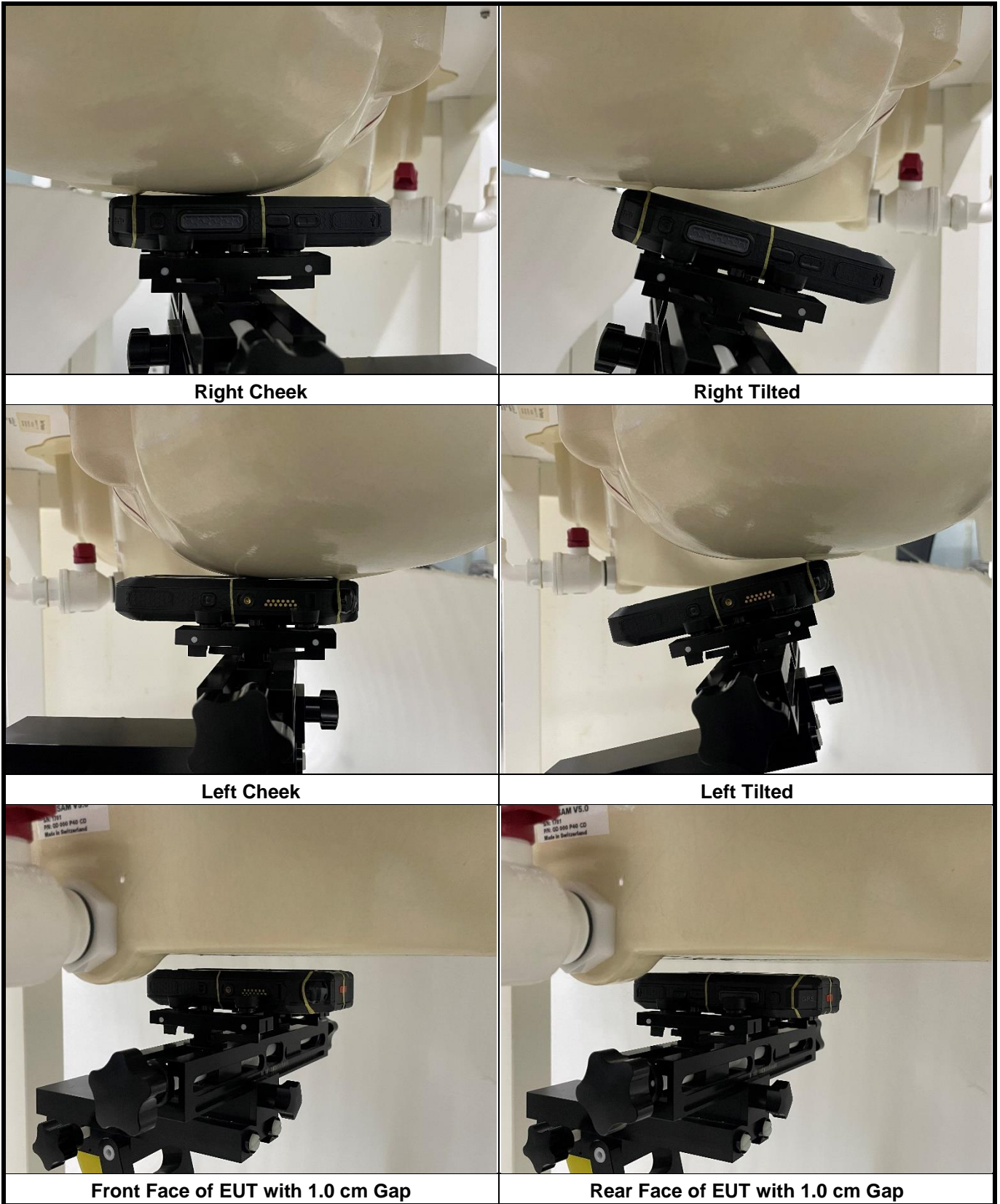
<EUT Front View>

The separation distance for antenna to edge:

Antenna	Overall diagonal(mm)	Display diagonal(mm)	To Left Side (mm)	To Right Side (mm)	To Top Side (mm)	To Bottom Side (mm)
WLAN / BT	142	102	10	50	12	118
WWAN			35	6	117	5

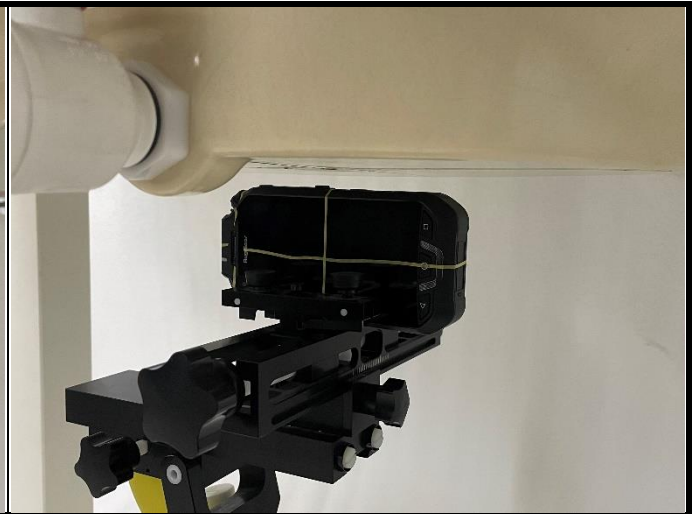
Antenna	Supported bands
WLAN / BT Antenna	WLAN2.4G, WLAN5G, Bluetooth
WWAN Antenna	GSM850/1900, WCDMA II/IV/V, LTE 2/4/5/7/12/13/17/26/38/41/66

<Photographs of SAR Setup>

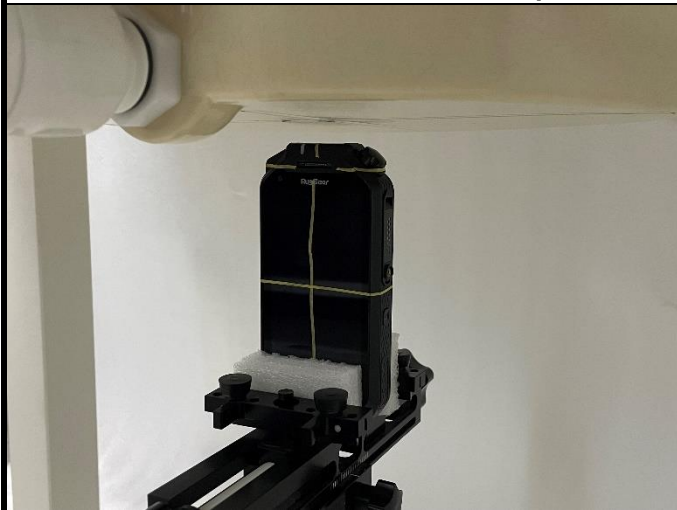




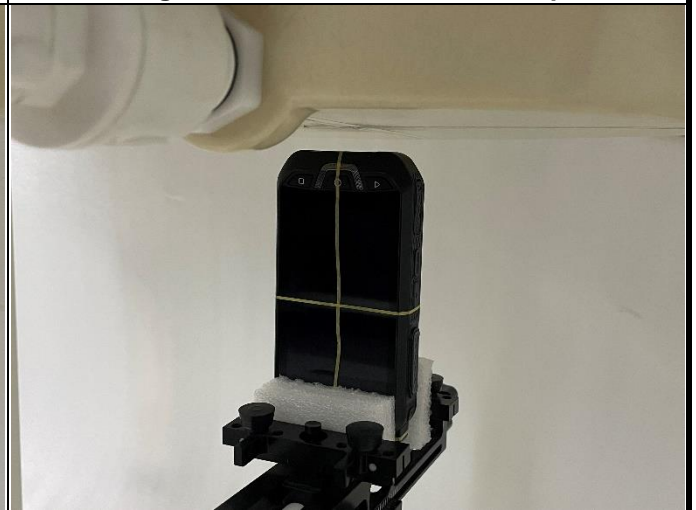
Left Side of EUT with 1.0 cm Gap



Right Side of EUT with 1.0 cm Gap



Top Side of EUT with 1.0 cm Gap



Bottom Side of EUT with 1.0 cm Gap