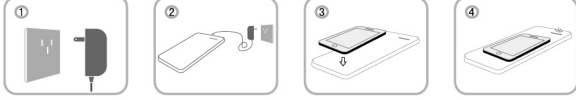


无线充电板

Qi:

- Qi发音同中国气功中的“气”
- Qi是适用于智能手机无线充电技术的全球性标准
- 检查手机或保护套是否有Qi兼容标识

充电使用指南



1. 将电源适配器插到电插座上。
2. 将电源适配器的出线，插到充电器上的DC接口。
3. 将兼容Qi的接收设备放到充电器Qi标志区域上，充电器发出嘟的一声提示音。
4. 充电时，蓝色指示灯开始闪烁。

注意:

- 当充电器上的接收装置放置的位置不对，或放置非指定接收装置时，红色错误指示灯交替闪亮或恒亮，充电器立即停止工作。

警示

- 请保持充电器和接收装置远离水和其他液体。
- 请确保充电器干燥后再插到电插座上。
- 在将电源适配器与电源插座连接前，请检查其标示电压是否与当地的电压匹配。
- 请勿将金属物或其他物品放置在充电器表面和接收装置下方。
- 请勿使用加长电线，过载的接线板。
- 如果你使用心脏起搏器或其他医用植入装置，请在使用充电装置前，咨询你的医生或植入装置制造商。
- 儿童、残疾人士及精神病患者请在监督下使用。

保修条例

本产品是一件设计精良，轻巧，美观时尚的高品质的家用充电器。请在正确的使用和保养下，发挥其优越的性能。

一、保修时间

自购买日期起，整机保修一年。关于主要部件保修期限，根据中国消费者协会相关规定执行。

二、保修服务

如果本产品需要维修，请联络你最初从其处购买产品的经销商。你需要咨询相关资讯，或是遇到困难和不解，可以拨打中国售后服务热线：0755 83714262

三、保修范围

保修服务只限于一般正常使用下有效。一切人为损坏及属于下列情况之一，将不予维修。

1. 超出保修期限的。
2. 人为因素造成的损坏，包括在正常工作环境下不按照说明书使用引起的损坏等。
3. 用户非本公司认可自行维修、改装或经非本公司联保单位维修。
4. 因不可抗拒的力（如水灾，火灾，地震，雷击等）造成的损坏。
5. 无保修卡凭证和有效购买凭证，产品型号，条码不符或涂改的。
6. 非本公司原因造成的故障，缺陷或瑕疵。

四、保修卡

用户姓名			
地址			
电话			
产品颜色			
产品型号		机身号	
购买日期		发票号	
购买商号名称及地址（加盖印）			
销售日期			

此证仅在中国境内有效。

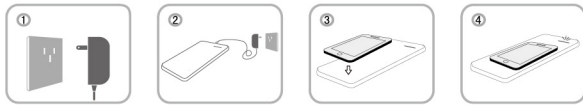
保修证作为在规定期限及条件之内进行免费维修的保证，是为了维护消费者的合法权益。

wireless charger

Qi:

- Qi is pronounced "Chee" and means "vital energy"
- Qi is the global standard of wireless charging technology for smart phone
- Please check if there is Qi logo on your smart phone or sleeve

Setup guide:



1. Connect the AC adapter to an electrical socket
2. Insert the DC cable into the designated socket of the OT-10P charger.
3. The charger emits a beeping sound when you place the Qi receiver on the Qi
4. The blue LED light will illuminate during the charging process.

Please notes:

When the phone is fully charged, the blue LED light will automatically turn off. When the non-Qi phone/Qi receiver has been detected, the red LED light will flash or lit and the charger will stop working immediately

Important safety notices:

Keep the Qi charger and Qi receiver away from water
Make sure the Qi charger is completely dry before connect it to an electrical socket

Warning notifications:

- Check if the voltage indicated on the AC adapter corresponds to the local voltage before you connect the adapter to an electrical socket
- Do not put any metallic labels or objects between the Qi receiver and the Qi charger
- If you have an implanted device in your body, consult with your doctor or the manufacture of the implanted device before using the Qi charger
- Do not use an extension cord or overload electrical outlets
- Supervision is needed when used by or near children, disabled persons or those with mental disabilities

The warranty ordinance

This is a well designed, smart, beautiful and fashionable high quality home charger. Please use and maintain it correctly so it can run well.

First, the warranty time

One year of warranty coverage since the purchased date.

Second, the warranty service

If the product needs repair, please contact the first franchiser that you bought the product from.

Third, scope of warranty

Warranty service is effective only when the product is being used properly. All man-made damage or any damage that belongs to one of these following circumstances, will not be included in the warranty

1. Beyond the warranty time .
2. Man-made damage or any other damages that caused by not following the user's manual.
3. Repair or refit the product by user himself or any coinsurance units which are not confirmed by our company
4. Damage caused by the force majeure (such as flood, fire, earthquake, lighting, etc.)
5. No proof of warranty card , valid purchase voucher , product model , bar code or altering.
6. Failure , defect or flaw which are not caused by our company .

V warranty card

Use name			
Address			
Tel			
Color			
Model		Model name	
Purchased date		Invoice No	
Trade name and address (with seal)			
Sale date			

Warranty card is a guarantee for free repairs when it is in warranty period and fulfills guarantee condition.

Federal Communications Commission (FCC) Statement

This device complies with part 15 of the FCC Rules. Operation is subject to the following two conditions: (1) This device may not cause harmful interference, and (2) this device must accept any interference received, including interference that may cause undesired operation.

Note: This equipment has been tested and found to comply with the limits for a Class B digital device, pursuant to part 15 of the FCC Rules. These limits are designed to provide reasonable protection against harmful interference in a residential installation. This equipment generates, uses and can radiate radio frequency energy and, if not installed and used in accordance with the instructions, may cause harmful interference to radio communications. However, there is no guarantee that interference will not occur in a particular installation. If this equipment does cause harmful interference to radio or television reception, which can be determined by turning the equipment off and on, the user is encouraged to try to correct the interference by one or more of the following measures:

- Reorient or relocate the receiving antenna.
- Increase the separation between the equipment and receiver.
- Connect the equipment into an outlet on a circuit different from that to which the receiver is connected.
- Consult the dealer or an experienced radio/TV technician for help.

Warning: Changes or modifications made to this device not expressly approved by **Bullitt Group** may void the FCC authorization to operate this device.

Note: The manufacturer is not responsible for any radio or tv interference caused by unauthorized modifications to this equipment. Such modifications could void the user's authority to operate the equipment.