



HEARING AID COMPATIBILITY RF EMISSIONS TEST REPORT

FCC ID : ZL5S42
Equipment : Rugged Smart Phone
Brand Name : CAT
Model Name : S42
M-Rating : M3
Applicant : Bullitt Group
One Valpy, Valpy Street, Reading, Berkshire, England RG1
1AR
Manufacturer : Bullitt Group
One Valpy, Valpy Street, Reading, Berkshire, England RG1
1AR
Standard : FCC 47 CFR §20.19
ANSI C63.19-2011

The product was received on May 22, 2020 and testing was started from Jun. 20, 2020 and completed on Jun. 22, 2020. We, Sporton International (ShenZhen) Inc., would like to declare that the tested sample has been evaluated in accordance with the test procedures and has been in compliance with the applicable technical standards.

The report must not be used by the client to claim product certification, approval, or endorsement by TAF or any agency of government.

The test results in this report apply exclusively to the tested model / sample. Without written approval of Sporton International (ShenZhen) Inc. EMC & Wireless Communications Laboratory, the test report shall not be reproduced except in full.



Long Liang

Reviewed by: Long Liang / Supervisor

Johnny Chen



Approved by: Johnny Chen / Manager

Sporton International (ShenZhen) Inc.

***1/F, 2/F, Bldg 5, Shiling Industrial Zone, Xinwei Village, Xili, Nanshan, Shenzhen, 518055
People's Republic of China***



Table of Contents

1. General Information..... 5
2. Testing Location..... 6
3. Applied Standards 6
4. RF Audio Interference Level..... 6
5. Air Interface and Operating Mode..... 7
6. Measurement System Specification 8
 6.1 E-Field Probe System..... 8
 6.2 Data Storage and Evaluation..... 9
7. RF Emissions Test Procedure.....10
8. Test Equipment List13
9. Measurement System Validation14
10. Modulation Interference Factor.....15
11. Low-power Exemption.....16
12. Conducted RF Output Power (Unit: dBm).....19
13. HAC RF Emission Test Results.....20
14. Uncertainty Assessment21
15. References.....23

Appendix A. Plots of System Performance Check
Appendix B. Plots of RF Emission Measurement
Appendix C. DASYS Calibration Certificate
Appendix D. Test Setup Photos



History of this test report

Report No.	Version	Description	Issued Date
HA052014-01A	Rev. 01	Initial issue of report	Jul. 10, 2020



1. General Information

Product Feature & Specification	
Applicant Name	Bullitt Group
Equipment Name	Rugged Smart Phone
Brand Name	CAT
Model Name	S42
FCC ID	ZL5S42
EUT Stage	Production Unit
Date Tested	2020/6/20 ~ 2020/6/22
Frequency Band	GSM850: 824.2 MHz ~ 848.8 MHz GSM1900: 1850.2 MHz ~ 1909.8 MHz WCDMA Band II: 1852.4 MHz ~ 1907.6 MHz WCDMA Band IV: 1712.4 MHz ~ 1752.6 MHz WCDMA Band V: 826.4 MHz ~ 846.6 MHz LTE Band 2: 1850.7 MHz ~ 1909.3 MHz LTE Band 4: 1710.7 MHz ~ 1754.3 MHz LTE Band 5: 824.7 MHz ~ 848.3 MHz LTE Band 7: 2502.5 MHz ~ 2567.5 MHz LTE Band 12: 699.7 MHz ~ 715.3 MHz LTE Band 13: 779.5 MHz ~ 784.5 MHz LTE Band 14: 790.5 MHz ~ 795.5 MHz LTE Band 17: 706.5 MHz ~ 713.5 MHz LTE Band 25: 1850.7 MHz ~ 1914.3 MHz LTE Band 26: 814.7 MHz ~ 848.3 MHz LTE Band 41: 2498.5 MHz ~ 2687.5 MHz LTE Band 66: 1710.7 MHz ~ 1779.3 MHz LTE Band 71: 665.5 MHz ~ 695.5 MHz WLAN 2.4GHz Band: 2412 MHz ~ 2462 MHz WLAN 5.2GHz Band: 5180 MHz ~ 5240 MHz WLAN 5.3GHz Band: 5260 MHz ~ 5320 MHz WLAN 5.5GHz Band: 5500 MHz ~ 5720 MHz WLAN 5.8GHz Band: 5745 MHz ~ 5825 MHz Bluetooth: 2402 MHz ~ 2480 MHz NFC: 13.56 MHz
Mode	GSM/GPRS/EGPRS AMR / RMC 12.2Kbps HSDPA HSUPA DC-HSDPA HSPA+ (16QAM uplink is not supported) LTE: QPSK, 16QAM, 64QAM WLAN 2.4GHz : 802.11b/g/n HT20 WLAN 5GHz : 802.11a/n/ac HT20/HT40/VHT20/VHT40/VHT80 Bluetooth BR/EDR/LE NFC:ASK
Remark:	1. This device has two WWAN transmit antennas. WWAN bottom antenna is located at the bottom edge of the device, and WWAN top antenna is located at the top edge of the device. Top and Bottom antenna support the same WWAN frequency bands, and they can't transmit simultaneously.



2. Testing Location

Sporton International (Shenzhen) Inc. is accredited to ISO/IEC 17025:2017 by American Association for Laboratory Accreditation with Certificate Number 5145.01.

Table with 3 columns: Test Firm, Test Site Location, and Test Site No. (with sub-columns for FCC Designation No. and FCC Test Firm Registration No.).

3. Applied Standards

- FCC CFR47 Part 20.19
ANSI C63.19-2011
FCC KDB 285076 D01 HAC Guidance v05
FCC KDB 285076 D02 T Coil testing v03
FCC KDB 285076 D03 HAC FAQ v01

4. RF Audio Interference Level

FCC wireless hearing aid compatibility rules ensure that consumers with hearing loss are able to access wireless communications services through a wide selection of handsets without experiencing disabling radio frequency (RF) interference or other technical obstacles.

To define and measure the hearing aid compatibility of handsets, in CFR47 part 20.19 ANSI C63.19 is referenced. A handset is considered hearing aid-compatible for acoustic coupling if it meets a rating of at least M3 under ANSI C63.19, and A handset is considered hearing aid compatible for inductive coupling if it meets a rating of at least T3. According to ANSI C63.19 2011 version, for acoustic coupling, the RF electric field emissions of wireless communication devices should be measured and rated according to the emission level as below.

Table 5.1: Telephone near-field categories in linear units. Columns include Emission Categories (M1-M4) and E-field emissions (<960Mhz, >960Mhz).

Table 5.1 Telephone near-field categories in linear units



5. Air Interface and Operating Mode

Air Interface	Band MHz	Type	C63.19 Tested	Simultaneous Transmitter	Name of Voice Service	Power Reduction
GSM	GSM850	VO	Yes	WLAN, BT	CMRS Voice	No
	GSM1900			WLAN, BT		No
	EDGE850	VD	Yes	WLAN, BT	Google Duo	No
	EDGE1900			WLAN, BT		
WCDMA	850	VO	No ⁽¹⁾	WLAN, BT	CMRS Voice	No
	1750			WLAN, BT		No
	1900			WLAN, BT		No
	HSPA	VD	No ⁽¹⁾	WLAN, BT	Google Duo	No
LTE (FDD)	Band 2	VD	No ⁽¹⁾	WLAN, BT	VoLTE / Google Duo	No
	Band 4			WLAN, BT		No
	Band 5			WLAN, BT		No
	Band 7			WLAN, BT		No
	Band 12			WLAN, BT		No
	Band 13			WLAN, BT		No
	Band 14			WLAN, BT		No
	Band 17			WLAN, BT		No
	Band 25			WLAN, BT		No
	Band 26			WLAN, BT		No
	Band 66			WLAN, BT		No
Band 71	WLAN, BT	No				
LTE (TDD)	Band 41	VD	Yes	WLAN, BT	VoLTE / Google Duo	No
Wi-Fi	2450	VD	No ⁽¹⁾	GSM, WCDMA,LTE	VoWiFi / Google Duo	No
	5200			GSM, WCDMA,LTE		No
	5300			GSM, WCDMA,LTE		No
	5500			GSM, WCDMA,LTE		No
	5800			GSM, WCDMA,LTE		No
BT	2450	DT	No	GSM, WCDMA,LTE	NA	No
Type Transport: VO= Voice only DT= Digital Transport only (no voice) VD= CMRS and IP Voice Service over Digital Transport						
Remark: 1. The air interface is exempted from testing by low power exemption that its average antenna input power plus its MIF is ≤17 dBm, and is rated as M4. 2. According to ANSI C63.19 2011 -version, for the air interface technology of a device is exempt from testing whose peak antenna input power, averaged over intervals ≤50 μs, is ≤23 dBm. An RF air interface technology that is exempted from testing shall be rated as M4.						

6. Measurement System Specification

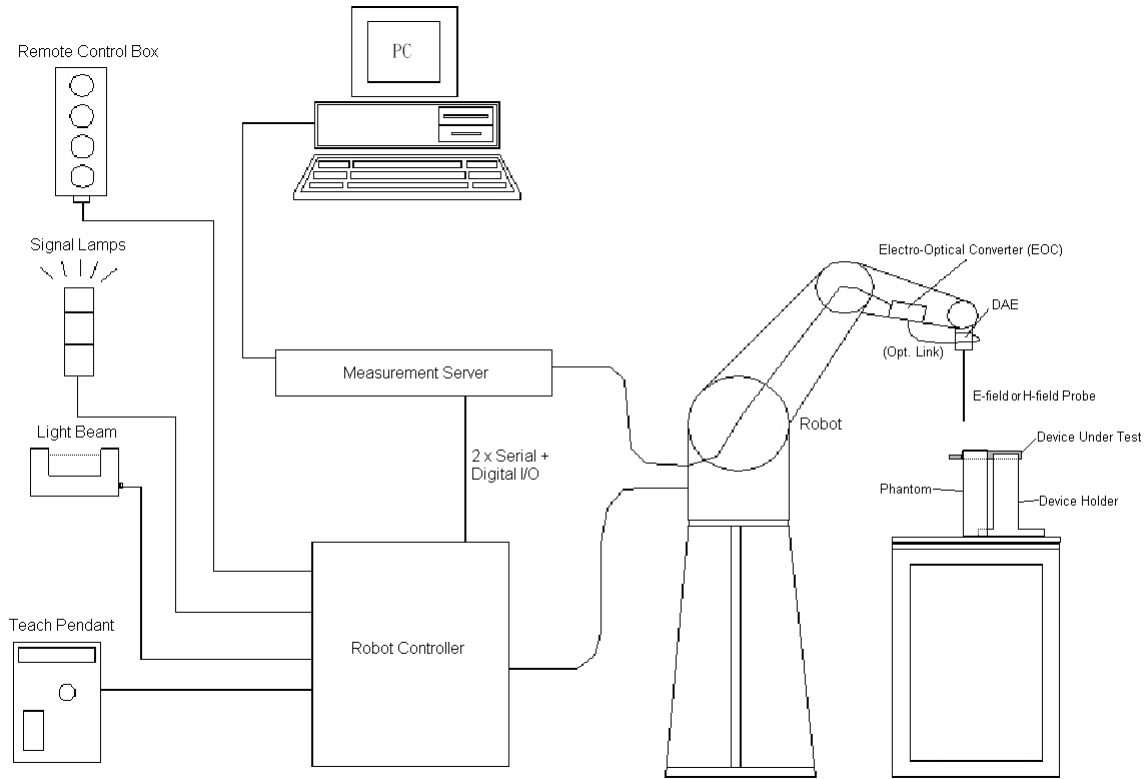


Fig 5.1 System Configurations

6.1 E-Field Probe System

E-Field Probe Specification

<ER3DV6>

Construction	One dipole parallel, two dipoles normal to probe axis Built-in shielding against static charges
Calibration	In air from 100 MHz to 3.0 GHz (absolute accuracy $\pm 6.0\%$, $k=2$)
Frequency	100 MHz to 6 GHz; Linearity: ± 2.0 dB (100 MHz to 3 GHz)
Directivity	± 0.2 dB in air (rotation around probe axis) ± 0.4 dB in air (rotation normal to probe axis)
Dynamic Range	2 V/m to 1000 V/m (M3 or better device readings fall well below diode compression point)
Linearity	± 0.2 dB
Dimensions	Overall length: 330 mm (Tip: 16 mm) Tip diameter: 8 mm (Body: 12 mm) Distance from probe tip to dipole centers: 2.5 mm



Fig 5.2 Photo of E-field Probe

Probe Tip Description:

HAC field measurements take place in the close near field with high gradients. Increasing the measuring distance from the source will generally decrease the measured field values (in case of the validation dipole approx. 10% per mm).

6.2 Data Storage and Evaluation

The DASYS software stores the assessed data from the data acquisition electronics as raw data (in microvolt readings from the probe sensors), together with all the necessary software parameters for the data evaluation (probe calibration data, and device frequency and modulation data) in measurement files.

Probe parameters :	- Sensitivity	Norm _i , a _{i0} , a _{i1} , a _{i2}
	- Conversion factor	ConvF _i
	- Diode compression point	dcp _i
Device parameters :	- Frequency	f
	- Crest factor	cf
Media parameters :	- Conductivity	σ
	- Density	ρ

The formula for each channel can be given as :

$$V_i = U_i + U_i^2 \cdot \frac{cf}{dcp_i}$$

with V_i = compensated signal of channel i , ($i = x, y, z$)
 U_i = input signal of channel i , ($i = x, y, z$)
 cf = crest factor of exciting field (DASY parameter)
 dcp_i = diode compression point (DASY parameter)

From the compensated input signals, the primary field data for each channel can be evaluated :

$$\text{E-field Probes : } E_i = \sqrt{\frac{V_i}{\text{Norm}_i \cdot \text{ConvF}}}$$

with V_i = compensated signal of channel i , ($i = x, y, z$)
 Norm_i = sensor sensitivity of channel i , ($i = x, y, z$), $\mu\text{V}/(\text{V}/\text{m})^2$ for E-field Probes
 ConvF = sensitivity enhancement in solution
 f = carrier frequency [GHz]
 E_i = electric field strength of channel i in V/m

The RSS value of the field components gives the total field strength (Hermitian magnitude) :

$$E_{\text{tot}} = \sqrt{E_x^2 + E_y^2 + E_z^2}$$

The primary field data are used to calculate the derived field units.



7. RF Emissions Test Procedure

Referenced from ANSI C63.19 -2011 section 5.5.1

- a. Confirm the proper operation of the field probe, probe measurement system, and other instrumentation and the positioning system.
- b. Position the WD in its intended test position.
- c. Set the WD to transmit a fixed and repeatable combination of signal power and modulation characteristic that is representative of the worst case (highest interference potential) encountered in normal use. Transiently occurring start-up, changeover, or termination conditions, or other operations likely to occur less than 1% of the time during normal operation, may be excluded from consideration.
- d. The center sub-grid shall be centered on the T-Coil mode perpendicular measurement point or the acoustic output, as appropriate. Locate the field probe at the initial test position in the 50 mm by 50 mm grid, which is contained in the measurement plane, refer to illustrated in Figure 8.2. If the field alignment method is used, align the probe for maximum field reception.
- e. Record the reading at the output of the measurement system.
- f. Scan the entire 50 mm by 50 mm region in equality spaced increments and record the reading at each measurement point, The distance between measurement points shall be sufficient to assure the identification of the maximum reading.
- g. Identify the five contiguous sub-grids around the center sub-grid whose maximum reading is the lowest of all available choices. This eliminates the three sub-grids with the maximum readings. Thus, the six areas to be used to determine the WD's highest emissions are identified.
- h. Identify the maximum reading within the non-excluded sub-grids identified in step g).
 - i. Indirect measurement method
 - j. The RF audio interference level in dB (V/m) is obtained by adding the MIF (in dB) to the maximum steady-state rms field-strength reading, in dB (V/m)
- k. Compare this RF audio interference level with the categories in ANSI C63.19-2011 clause 8 and record the resulting WD category rating.
- l. For the T-Coil perpendicular measurement location is ≥ 5.0 mm from the center of the acoustic output, then two different 50 mm by 50 mm areas may need to be scanned, the first for the microphone mode assessment and the second for the T-Coil assessment.
- m. The second for the T-Coil assessment, with the grid shifted so that it is centered on the perpendicular measurement point. Record the WD category rating.

Test Instructions

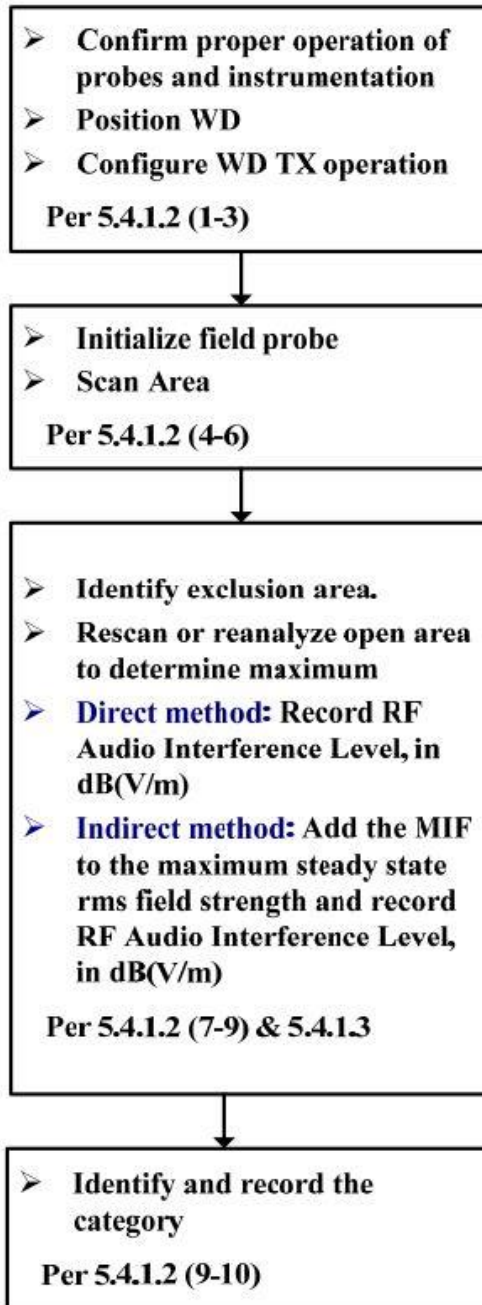


Figure 8.1 RF Emissions Flow Chart

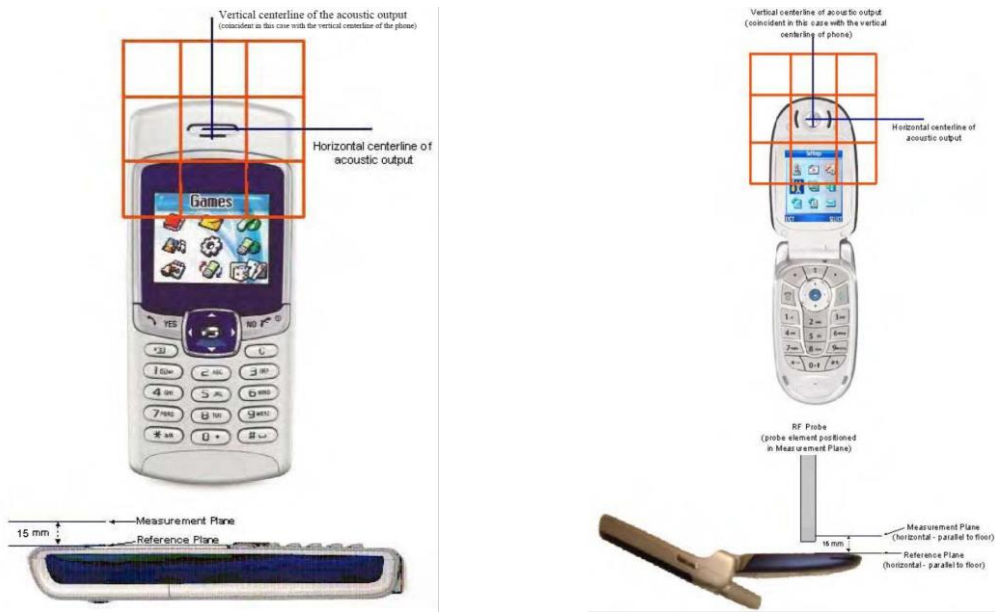


Fig 8.2 EUT reference and plane for HAC RF emission measurements

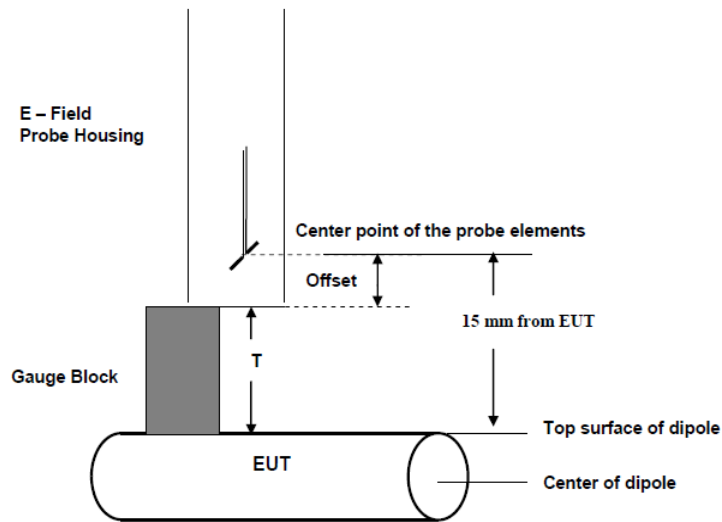


Fig. 8.3 Gauge block with E-field probe

**8. Test Equipment List**

Manufacturer	Name of Equipment	Type/Model	Serial Number	Calibration	
				Last Cal.	Due Date
SPEAG	835MHz Calibration Dipole	CD835V3	1184	May 25, 2018	May 24, 2021
SPEAG	1880MHz Calibration Dipole	CD1880V3	1170	May 25, 2018	May 24, 2021
SPEAG	2600MHz Calibration Dipole	CD2600V3	1010	Mar. 14, 2019	Mar. 13, 2022
SPEAG	Isotropic E-Field Probe	EF3DV3	4053	Apr. 27, 2020	Apr. 26, 2021
SPEAG	Data Acquisition Electronics	DAE4	1356	May 19, 2020	May 18, 2021
SPEAG	Phone Positioner	N/A	N/A	NCR	NCR
Anritsu	Power Sensor	MA2411B	1306099	Jul. 22, 2019	Jul. 21, 2020
Anritsu	Power Meter	ML2495A	1349001	Jul. 22, 2019	Jul. 21, 2020
Anritsu	Power Sensor	MA2411B	1207253	Dec. 26, 2019	Dec. 25, 2020
Anritsu	Power Meter	ML2495A	1218010	Dec. 26, 2019	Dec. 25, 2020
Anritsu	Radio communication analyzer	MT8820C	6201300653	Jul. 22, 2019	Jul. 21, 2020
Agilent	Signal Generator	N5181A	MY50145381	Dec. 26, 2019	Dec. 25, 2020
Agilent	Dual Directional Coupler	778D	50422	NCR	NCR
Woken	Attenuator	WK0602-XX	N/A	NCR	NCR
AR	Amplifier	5S1G4	0333096	Apr. 17, 2020	Apr. 16, 2021
Anymetre	Thermo-Hygrometer	JR593	2015030904	Apr. 19, 2020	Apr. 18, 2021
SPEAG	Audio Magnetic Calibration Coil	AMCC	1049	NCR	NCR

Note:

1. NCR: "No-Calibration Required"

9. Measurement System Validation

Each DASY system is equipped with one or more system validation kits. These units, together with the predefined measurement procedures within the DASY software, enable the user to conduct the system performance check and system validation. System validation kit includes a dipole, tripod holder to fix it underneath the test Arch and a corresponding distance holder.

The system performance check verifies that the system operates within its specifications. System and operator errors can be detected and corrected. It is recommended that the system performance check be performed prior to any usage of the system in order to guarantee reproducible results. The system performance check uses normal HAC measurements in a simplified setup with a well characterized source. This setup was selected to give a high sensitivity to all parameters that might fail or vary over time. The system check does not intend to replace the calibration of the components, but indicates situations where the system uncertainty is exceeded due to drift or failure.

<Test Setup>

1. In the simplified setup for system evaluation, the EUT is replaced by a calibrated dipole and the power source is replaced by a continuous wave which comes from a signal generator.
2. The center point of the probe element(s) is 15mm from the closest surface of the dipole elements.
3. The calibrated dipole must be placed beneath the arch phantom. The equipment setup is shown below:
4. The output power on dipole port must be calibrated to 20dBm (100mW) before dipole is connected.

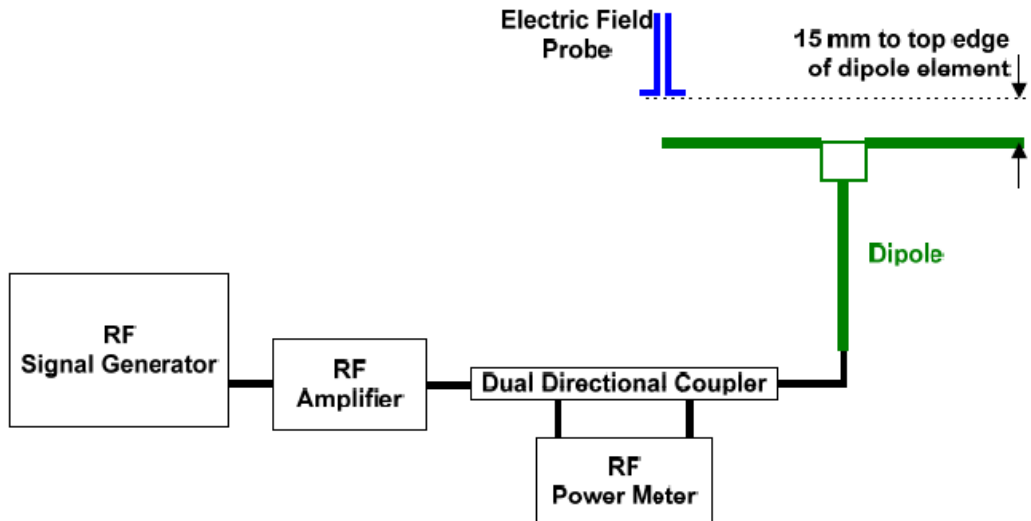


Fig. 7.1 Setup Diagram

<Validation Results>

Comparing to the original E-field value provided by SPEAG, the verification data should be within its specification of 25 %. Table 6.1 shows the target value and measured value. The table below indicates the system performance check can meet the variation criterion and the plots can be referred to appendix A of this report.

$$\text{Deviation} = ((\text{Average E-field Value}) - (\text{Target value})) / (\text{Target value}) * 100\%$$

Frequency (MHz)	Input Power (dBm)	Target Value (V/m)	E-Field 1 (V/m)	E-Field 2 (V/m)	Average Value (V/m)	Deviation (%)	Date
835	20	110.4	99.76	108.6	104.18	-5.63	Jun. 20, 2020
1880	20	89.5	83.56	82.85	83.205	-7.03	Jun. 21, 2020
2600	20	84.5	91.59	81.79	86.69	2.59	Jun. 22, 2020



10. Modulation Interference Factor

The HAC Standard ANSI C63.19-2011 defines a new scaling using the Modulation Interference Factor (MIF). For any specific fixed and repeatable modulated signal, a modulation interference factor (MIF, expressed in dB) may be developed that relates its interference potential to its steady-state rms signal level or average power level. This factor is a function only of the audio-frequency amplitude modulation characteristics of the signal and is the same for field-strength and conducted power measurements. It is important to emphasize that the MIF is valid only for a specific repeatable audio-frequency amplitude modulation characteristic. Any change in modulation characteristic requires determination and application of a new MIF

The Modulation Interference factor (MIF, in dB) is added to the measured average E-field (in dBV/m) and converts it to the RF Audio Interference level (in dBV/m). This level considers the audible amplitude modulation components in the RF E-field. CW fields without amplitude modulation are assumed to not interfere with the hearing aid electronics. Modulations without time slots and low fluctuations at low frequencies have low MIF values, TDMA modulations with narrow transmission and repetition rates of few 100 Hz have high MIF values and give similar classifications as ANSI C63.19-2011.

ER3D, EF3D and EU2D E-field probes have a bandwidth <10 kHz and can therefore not evaluate the RF envelope in the full audio band. DASY52 is therefore using the indirect measurement method according to ANSI C63.19-2011 which is the primary method. These near field probes read the averaged E-field measurement. Especially for the new high peak-to-average (PAR) signal types, the probes shall be linearized by PMR calibration in order to not overestimate the field reading. Probe Modulation Response (PMR) calibration linearizes the probe response over its dynamic range for specific modulations which are characterized by their UID and result in an uncertainty specified in the probe calibration certificate. The MIF is characteristic for a given waveform envelope and can be used as a constant conversion factor if the probe has been PMR calibrated.

The evaluation method for the MIF is defined in ANSI C63.19-2011 section D.7. An RMS demodulated RF signal is fed to a spectral filter (similar to an A weighting filter) and forwarded to a temporal filter acting as a quasi-peak detector. The averaged output of these filtering is scaled to a 1 kHz 80% AM signal as reference. MIF measurement requires additional instrumentation and is not well suited for evaluation by the end user with reasonable uncertainty. It may alternatively be determined through analysis and simulation, because it is constant and characteristic for a communication signal. DASY52 uses well-defined signals for PMR calibration. The MIF of these signals has been determined by simulation and it is automatically applied.

The MIF measurement uncertainty is estimated as follows, declared by HAC equipment provider SPEAG, for modulation frequencies from slotted waveforms with fundamental frequency and at least 2 harmonics within 10 kHz:

- 1. 0.2 dB for MIF: -7 to +5 dB
2. 0.5 dB for MIF: -13 to +11 dB
3. 1 dB for MIF: > -20 dB

MIF values applied in this test report were provided by the HAC equipment provider of SPEAG, and the worst values for all air interface are listed below to be determine the Low-power Exemption.

Table with 3 columns: UID, Communication System Name, MIF(dB). Rows include GSM-FDD, EDGE-FDD, UMTS-FDD, LTE-FDD, and IEEE WiFi standards.



11. Low-power Exemption

<Max Tune-up Limit>

Frequency Band		Average Power _UAT(dBm)	Average Power _LAT(dBm)	
GSM	GSM850	30.20	33.20	
	EDGE850	25.00	28.00	
	GSM1900	26.30	30.30	
	EDGE1900	23.00	27.00	
WCDMA	Band V	24.00	24.00	
	Band IV	20.00	24.00	
	Band II	19.00	24.00	
	HSPA	24.00	24.00	
FDD LTE	Band 2	19.00	24.00	
	Band 4	20.00	24.00	
	Band 5	24.00	24.00	
	Band 7	18.00	24.00	
	Band 12	24.00	24.00	
	Band 13	24.00	24.00	
	Band 14	24.00	24.00	
	Band 17	24.00	24.00	
	Band 25	19.00	24.00	
	Band 26	24.00	24.00	
	Band 71	24.00	24.00	
	Band 66	20.00	24.00	
TDD LTE	Band 41_PC2	QPSK	21.50	27.00
		16QAM	20.50	26.00
		64QAM	19.50	25.00
	Band 41_PC3	QPSK	20.00	24.00
		16QAM	19.00	23.00
		64QAM	18.00	22.00

Note: UAT means Up/Top antenna; LAT means Lower/Bottom antenna.



Frequency Band		Average Power
2.4GHz WLAN	802.11b	15.50
	802.11g	15.00
	802.11n-HT20	14.50
5GHz WLAN	802.11a	18.00
	802.11n-HT20	17.50
	802.11n-HT40	17.00
	802.11ac-VHT20	17.50
	802.11ac-VHT40	17.00
	802.11ac-VHT80	14.00

<Low Power Exemption>

UAT					
Air Interface	Max Average Antenna Input Power (dBm)	Worst Case MIF (dB)	Power + MIF(dB)	C63.19 test required	
GSM850	30.20	3.63	33.83	Yes	
EDGE850	25.00	3.75	28.75	No	
GSM1900	26.30	3.63	29.93	Yes	
EDGE1900	23.00	3.75	26.75	No	
WCDMA	24.00	-25.43	-1.43	No	
WCDMA - HSPA	24.00	-20.39	3.61	No	
LTE - FDD	24.00	-9.76	14.24	No	
LTE – TDD - PC2	QPSK	21.50	-1.62	19.88	Yes
	16QAM	20.50	-1.44	19.06	No
	64QAM	19.50	-1.54	17.96	No
LTE – TDD - PC3	QPSK	20.00	-1.62	18.38	Yes
	16QAM	19.00	-1.44	17.56	No
	64QAM	18.00	-1.54	16.46	No



LAT		Air Interface	Max Average Antenna Input Power (dBm)	Worst Case MIF (dB)	Power + MIF(dB)	C63.19 test required
		GSM850	33.20	3.63	36.83	Yes
		EDGE850	28.00	3.75	31.75	No
		GSM1900	30.30	3.63	33.93	Yes
		EDGE1900	27.00	3.75	30.75	No
		WCDMA	24.00	-25.43	-1.43	No
		WCDMA - HSPA	24.00	-20.39	3.61	No
		LTE - FDD	24.00	-9.76	14.24	No
LTE – TDD - PC2	QPSK	27.00	-1.62	25.38	Yes	
	16QAM	26.00	-1.44	24.56	No	
	64QAM	25.00	-1.54	23.46	No	
LTE – TDD - PC3	QPSK	24.00	-1.62	22.38	Yes	
	16QAM	23.00	-1.44	21.56	No	
	64QAM	22.00	-1.54	20.46	No	

Air Interface	Max Average Antenna Input Power (dBm)	Worst Case MIF (dB)	Power + MIF(dB)	C63.19 test required
802.11b	15.50	-2.02	13.48	No
802.11g	15.00	0.12	15.12	No
802.11n-HT20	14.50	-13.44	1.06	No
802.11a	18.00	-3.15	14.85	No
802.11n-HT20	17.50	-3.15	14.35	No
802.11n-HT40	17.00	-3.15	13.85	No
802.11ac-VHT20	17.50	-5.57	11.93	No
802.11ac-VHT40	17.00	-5.57	11.43	No
802.11ac-VHT80	14.00	-5.57	8.43	No

General Note:

- EDGE data modes is not necessary due the GSM Voice mode is the worst case.
- 16QAM/64QAM for LTE is not necessary due the QPSK mode is the worst case.
- According to ANSI C63.19 2011-version, for the air interface technology of a device is exempt from testing when its average antenna input power plus its MIF is ≤17 dBm for any of its operating modes.
- HAC RF rating is M4 for the air interface which meets the low power exemption.



12. Conducted RF Output Power (Unit: dBm)

<UAT>

Average Antenna Input Power(dBm)						
Band	GSM850			GSM1900		
Channel	128	189	251	512	661	810
Frequency (MHz)	824.2	836.4	848.8	1850.2	1880.0	1909.8
GSM (GMSK, 1 Tx slot)	29.79	29.77	29.63	26.19	26.28	26.23

<LAT>

Average Antenna Input Power(dBm)						
Band	GSM850			GSM1900		
Channel	128	189	251	512	661	810
Frequency (MHz)	824.2	836.4	848.8	1850.2	1880.0	1909.8
GSM (GMSK, 1 Tx slot)	32.69	32.65	32.57	30.16	30.21	30.22

<LTE B41_PC3 UAT>

BW [MHz]	Modulation	RB Size	RB Offset	Power Low Ch. / Freq.	Power Low Middle Ch. / Freq.	Power Middle Ch. / Freq.	Power High Middle Ch. / Freq.	Power High Ch. / Freq.
Channel				39750	40185	40620	41055	41490
Frequency (MHz)				2506	2549.5	2593	2636.5	2680
20	QPSK	1	49	19.32	19.2	19.44	19.33	19.31

<LTE B41_PC2 UAT>

BW [MHz]	Modulation	RB Size	RB Offset	Power Low Ch. / Freq.	Power Low Middle Ch. / Freq.	Power Middle Ch. / Freq.	Power High Middle Ch. / Freq.	Power High Ch. / Freq.
Channel				39750	40185	40620	41055	41490
Frequency (MHz)				2506	2549.5	2593	2636.5	2680
20	QPSK	1	49	20.72	20.71	20.75	20.43	20.62

<LTE B41_PC3 LAT>

BW [MHz]	Modulation	RB Size	RB Offset	Power Low Ch. / Freq.	Power Low Middle Ch. / Freq.	Power Middle Ch. / Freq.	Power High Middle Ch. / Freq.	Power High Ch. / Freq.
Channel				39750	40185	40620	41055	41490
Frequency (MHz)				2506	2549.5	2593	2636.5	2680
20	QPSK	1	49	23.22	23.16	23.3	23.21	23.19

<LTE B41_PC2 LAT>

BW [MHz]	Modulation	RB Size	RB Offset	Power Low Ch. / Freq.	Power Low Middle Ch. / Freq.	Power Middle Ch. / Freq.	Power High Middle Ch. / Freq.	Power High Ch. / Freq.
Channel				39750	40185	40620	41055	41490
Frequency (MHz)				2506	2549.5	2593	2636.5	2680
20	QPSK	1	49	26.07	26.09	26.14	25.92	26.01



13. HAC RF Emission Test Results

Plot No.	Air Interface	Mode	Channel	Transmit Ant.	Average Antenna Input Power (dBm)	MIF	E-Field (dBV/m)	Margin to FCC M3 limit (dB)	E-Field M Rating
01	GSM850	GSM Voice	128	UAT	29.79	3.63	41.66	3.34	M3
02	GSM850	GSM Voice	189	UAT	29.77	3.63	41.62	3.38	M3
03	GSM850	GSM Voice	251	UAT	29.63	3.63	41.65	3.35	M3
04	GSM1900	GSM Voice	512	UAT	26.19	3.63	19.26	15.74	M4
05	GSM1900	GSM Voice	661	UAT	26.28	3.63	19.65	15.35	M4
06	GSM1900	GSM Voice	810	UAT	26.23	3.63	19.39	15.61	M4
07	LTE Band 41	20M_QPSK_1_49	39750	UAT	19.32	-1.62	18.40	16.60	M4
08	LTE Band 41	20M_QPSK_1_49	40185	UAT	19.2	-1.62	17.55	17.45	M4
09	LTE Band 41	20M_QPSK_1_49	40620	UAT	19.44	-1.62	17.50	17.50	M4
10	LTE Band 41	20M_QPSK_1_49	41055	UAT	19.33	-1.62	17.37	17.63	M4
11	LTE Band 41	20M_QPSK_1_49	41490	UAT	19.31	-1.62	17.74	17.26	M4
12	LTE Band41_HPUE	20M_QPSK_1_49	39750	UAT	20.72	-1.62	17.77	17.23	M4
13	LTE Band 41_HPUE	20M_QPSK_1_49	40185	UAT	20.71	-1.62	17.46	17.54	M4
14	LTE Band41_HPUE	20M_QPSK_1_49	40620	UAT	20.75	-1.62	16.80	18.20	M4
15	LTE Band 41_HPUE	20M_QPSK_1_49	41055	UAT	20.43	-1.62	16.73	18.27	M4
16	LTE Band41_HPUE	20M_QPSK_1_49	41490	UAT	20.62	-1.62	16.23	18.77	M4
17	GSM850	GSM Voice	128	LAT	32.69	3.63	36.96	8.04	M4
18	GSM850	GSM Voice	189	LAT	32.65	3.63	36.61	8.39	M4
19	GSM850	GSM Voice	251	LAT	32.57	3.63	37.10	7.90	M4
20	GSM1900	GSM Voice	512	LAT	30.16	3.63	25.76	9.24	M4
21	GSM1900	GSM Voice	661	LAT	30.21	3.63	26.13	8.87	M4
22	GSM1900	GSM Voice	810	LAT	30.22	3.63	26.95	8.05	M4
23	LTE Band 41	20M_QPSK_1_49	39750	LAT	23.22	-1.62	22.30	12.70	M4
24	LTE Band 41	20M_QPSK_1_49	40185	LAT	23.16	-1.62	21.48	13.52	M4
25	LTE Band 41	20M_QPSK_1_49	40620	LAT	23.3	-1.62	20.89	14.11	M4
26	LTE Band 41	20M_QPSK_1_49	41055	LAT	23.21	-1.62	21.19	13.81	M4
27	LTE Band 41	20M_QPSK_1_49	41490	LAT	23.19	-1.62	20.93	14.07	M4
28	LTE Band41_HPUE	20M_QPSK_1_49	39750	LAT	26.07	-1.62	23.12	11.88	M4
29	LTE Band 41_HPUE	20M_QPSK_1_49	40185	LAT	26.09	-1.62	22.46	12.54	M4
30	LTE Band41_HPUE	20M_QPSK_1_49	40620	LAT	26.14	-1.62	22.00	13.00	M4
31	LTE Band 41_HPUE	20M_QPSK_1_49	41055	LAT	25.92	-1.62	21.97	13.03	M4
32	LTE Band41_HPUE	20M_QPSK_1_49	41490	LAT	26.01	-1.62	21.78	13.22	M4

Remark:

1. The HAC measurement system applies MIF value onto the measured RMS E-field, which is indirect method in ANSI C63.19 2011 version, and reports the RF audio interference level.
2. Phone Condition: Mute on; Backlight off; Max Volume

Test Engineer : Changlin Huang.

14. Uncertainty Assessment

The component of uncertainty may generally be categorized according to the methods used to evaluate them. The evaluation of uncertainty by the statistical analysis of a series of observations is termed a Type A evaluation of uncertainty. The evaluation of uncertainty by means other than the statistical analysis of a series of observation is termed a Type B evaluation of uncertainty. Each component of uncertainty, however evaluated, is represented by an estimated standard deviation, termed standard uncertainty, which is determined by the positive square root of the estimated variance.

The combined standard uncertainty of the measurement result represents the estimated standard deviation of the result. It is obtained by combining the individual standard uncertainties of both Type A and Type B evaluation using the usual “root-sum-squares” (RSS) methods of combining standard deviations by taking the positive square root of the estimated variances. Expanded uncertainty is a measure of uncertainty that defines an interval about the measurement result within which the measured value is confidently believed to lie. It is obtained by multiplying the combined standard uncertainty by a coverage factor. For purpose of this document, a coverage factor two is used, which corresponds to confidence interval of about 95 %. The DASY uncertainty Budget is showed in Table 12.1.

The judgment of conformity in the report is based on the measurement results excluding the measurement uncertainty.

Error Description	Uncertainty Value (±%)	Probability	Divisor	(Ci) E	(Ci) H	Standard Uncertainty (E) (±%)
Measurement System						
Probe Calibration	5.1	N	1	1	1	5.1
Axial Isotropy	4.7	R	1.732	1	1	2.7
Sensor Displacement	16.5	R	1.732	1	0.145	9.5
Boundary Effects	2.4	R	1.732	1	1	1.4
Phantom Boundary Effect	7.2	R	1.732	1	0	4.2
Linearity	4.7	R	1.732	1	1	2.7
Scaling with PMR calibration	10.0	R	1.732	1	1	5.8
System Detection Limit	1.0	R	1.732	1	1	0.6
Readout Electronics	0.3	N	1	1	1	0.3
Response Time	2.6	R	1.732	1	1	1.5
Integration Time	2.6	R	1.732	1	1	1.5
RF Ambient Conditions	3.0	R	1.732	1	1	1.7
RF Reflections	12.0	R	1.732	1	1	6.9
Probe Positioner	1.2	R	1.732	1	0.67	0.7
Probe Positioning	4.7	R	1.732	1	0.67	2.7
Extrap. and Interpolation	1.0	R	1.732	1	1	0.6
Test Sample Related						
Device Positioning Vertical	4.7	R	1.732	1	0.67	2.7
Device Positioning Lateral	1.0	R	1.732	1	1	0.6
Device Holder and Phantom	2.4	R	1.732	1	1	1.4
Power Drift	5.0	R	1.732	1	1	2.9
Phantom and Setup Related						
Phantom Thickness	2.4	R	1.732	1	0.67	1.4
Combined Std. Uncertainty						16.4%
Coverage Factor for 95 %						K=2
Expanded STD Uncertainty						32.7%

Table 14.1 Uncertainty Budget of HAC free field assessment
Remark:

Worst-Case uncertainty budget for HAC free field assessment according to ANSIC63.19 [1], [2]. The budget is valid for the frequency range 700 MHz - 3 GHz and represents a worst case analysis.



15. References

- [1] ANSI C63.19-2011, "American National Standard for Methods of Measurement of Compatibility between Wireless Communications Devices and Hearing Aids", 27 May 2011.
- [2] FCC KDB 285076 D01v05, "Equipment Authorization Guidance for Hearing Aid Compatibility", Sep 2017
- [3] FCC KDB 285076 D02v03, "Guidance for performing T-Coil tests for air interfaces supporting voice over IP (e.g., LTE and WiFi) to support CMRS based telephone services", Sep 2017
- [4] FCC KDB 285076 D03v01, "Hearing aid compatibility frequently asked questions", Sep 2017
- [5] SPEAG DASY System Handbook



Appendix A. Plots of System Performance Check

The plots are shown as follows.

HAC_E_Dipole_835

DUT: HAC-Dipole 835 MHz

Communication System: UID 0, CW; Frequency: 835 MHz; Duty Cycle: 1:1

Medium: Air Medium parameters used: $\sigma = 0$ S/m, $\epsilon_r = 1$; $\rho = 0$ kg/m³

Ambient Temperature : 23.4 °C

DASY5 Configuration:

- Probe: EF3DV3 - SN4053; ConvF(1, 1, 1); Calibrated: 2020.04.27;
- Sensor-Surface: (Fix Surface)
- Electronics: DAE4 Sn1356; Calibrated: 2020.05.19
- Phantom: HAC Test Arch; Type: SD HAC P01 BA;
- Measurement SW: DASY52, Version 52.8 (8); SEMCAD X Version 14.6.10 (7331)

E Scan - measurement distance from the probe sensor center to CD835 = 10mm & 15mm/Hearing Aid Compatibility Test at 15mm distance (41x361x1): Interpolated grid:

dx=0.5000 mm, dy=0.5000 mm

Device Reference Point: 0, 0, -6.3 mm

Reference Value = 103.3 V/m; Power Drift = -0.01 dB

PMR not calibrated. PMF = 1.000 is applied.

E-field emissions = 108.6 V/m

Average value of Total=(99.76+108.6)/2=104.18 V/m

PMF scaled E-field

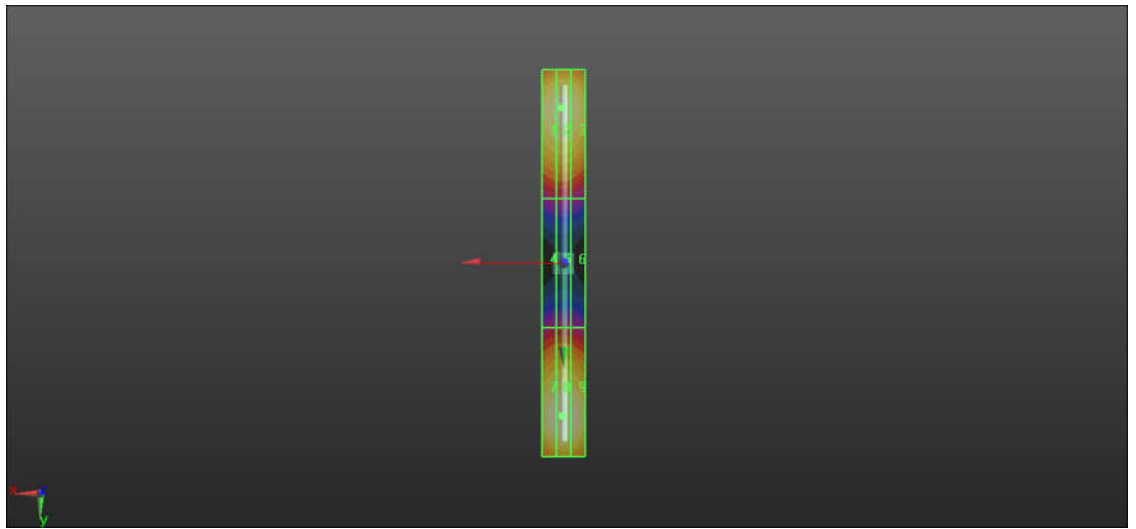
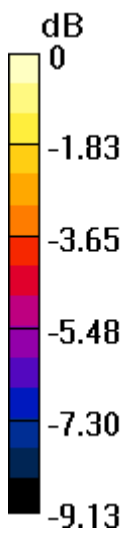
Grid 1 M4 98.88 V/m	Grid 2 M4 99.76 V/m	Grid 3 M4 97.19 V/m
Grid 4 M4 59.65 V/m	Grid 5 M4 60.05 V/m	Grid 6 M4 59.23 V/m
Grid 7 M4 102.3 V/m	Grid 8 M4 108.6 V/m	Grid 9 M4 101.5 V/m

Cursor:

Total = 100.4 V/m

E Category: M4

Location: 0.5, 71, 8.7 mm



0 dB = 108.6 V/m = 40.03 dBV/m

HAC_E_Dipole_1880

DUT: HAC-Dipole 1880 MHz

Communication System: UID 0, CW; Frequency: 1880 MHz; Duty Cycle: 1:1

Medium: Air Medium parameters used: $\sigma = 0$ S/m, $\epsilon_r = 1$; $\rho = 0$ kg/m³

Ambient Temperature : 23.4 °C

DASY5 Configuration:

- Probe: EF3DV3 - SN4053; ConvF(1, 1, 1); Calibrated: 2020.04.27;
- Sensor-Surface: (Fix Surface)
- Electronics: DAE4 Sn1356; Calibrated: 2020.05.19
- Phantom: HAC Test Arch; Type: SD HAC P01 BA;
- Measurement SW: DASY52, Version 52.8 (8); SEMCAD X Version 14.6.10 (7331)

E Scan - measurement distance from the probe sensor center to CD1880 = 10mm & 15mm/Hearing Aid Compatibility Test at 15mm distance (41x181x1): Interpolated grid:

dx=0.5000 mm, dy=0.5000 mm

Device Reference Point: 0, 0, -6.3 mm

Reference Value = 121.7 V/m; Power Drift = -0.01 dB

PMR not calibrated. PMF = 1.000 is applied.

E-field emissions = 83.56 V/m

Average value of Total=(83.56+82.85)/2=83.205 V/m

PMF scaled E-field

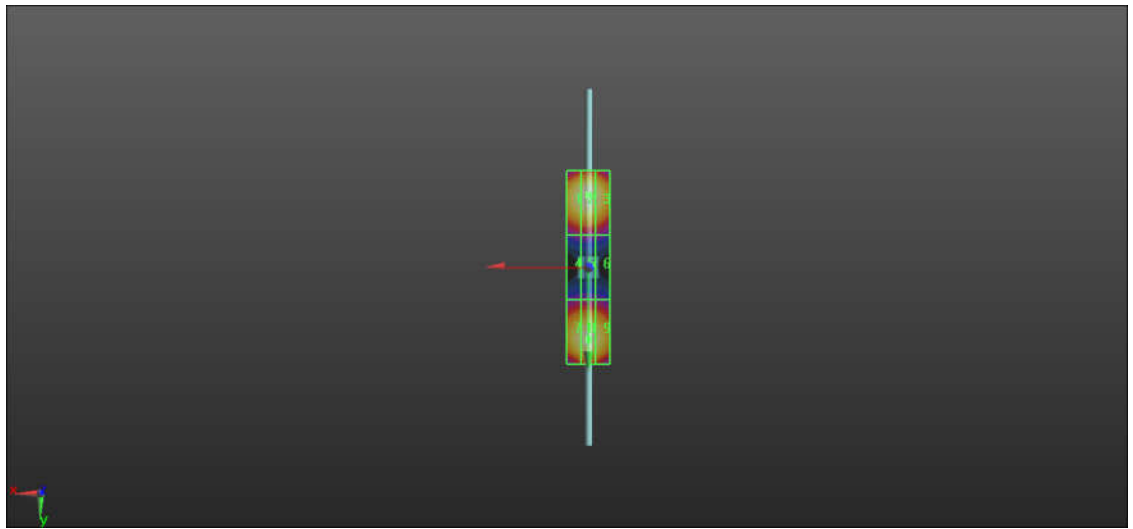
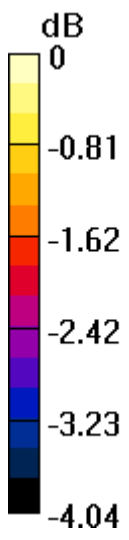
Grid 1 M3 81.60 V/m	Grid 2 M3 83.56 V/m	Grid 3 M3 81.11 V/m
Grid 4 M4 62.89 V/m	Grid 5 M4 64.15 V/m	Grid 6 M4 63.51 V/m
Grid 7 M3 80.77 V/m	Grid 8 M3 82.85 V/m	Grid 9 M3 81.37 V/m

Cursor:

Total = 83.56 V/m

E Category: M3

Location: 0, -33.5, 8.7 mm



0 dB = 83.56 V/m = 38.25 dBV/m

HAC_E_Dipole_2600

DUT: HAC-Dipole 2600 MHz

Communication System: UID 0, CW; Frequency: 2600 MHz; Duty Cycle: 1:1

Medium: Air Medium parameters used: $\sigma = 0$ S/m, $\epsilon_r = 1$; $\rho = 0$ kg/m³

Ambient Temperature : 23.4 °C

DASY5 Configuration:

- Probe: EF3DV3 - SN4053; ConvF(1, 1, 1); Calibrated: 2020.04.27;
- Sensor-Surface: (Fix Surface)
- Electronics: DAE4 Sn1356; Calibrated: 2020.05.19
- Phantom: HAC Test Arch; Type: SD HAC P01 BA;
- Measurement SW: DASY52, Version 52.8 (8); SEMCAD X Version 14.6.10 (7331)

E Scan - measurement distance from the probe sensor center to CD2600 = 10mm & 15mm/Hearing Aid Compatibility Test at 15mm distance (41x181x1): Interpolated grid:

dx=0.5000 mm, dy=0.5000 mm

Device Reference Point: 0, 0, -6.3 mm

Reference Value = 84.85 V/m; Power Drift = 0.09 dB

PMR not calibrated. PMF = 1.000 is applied.

E-field emissions = 87.89 V/m

Average value of Total=(91.59+81.79)/2=86.69 V/m

PMF scaled E-field

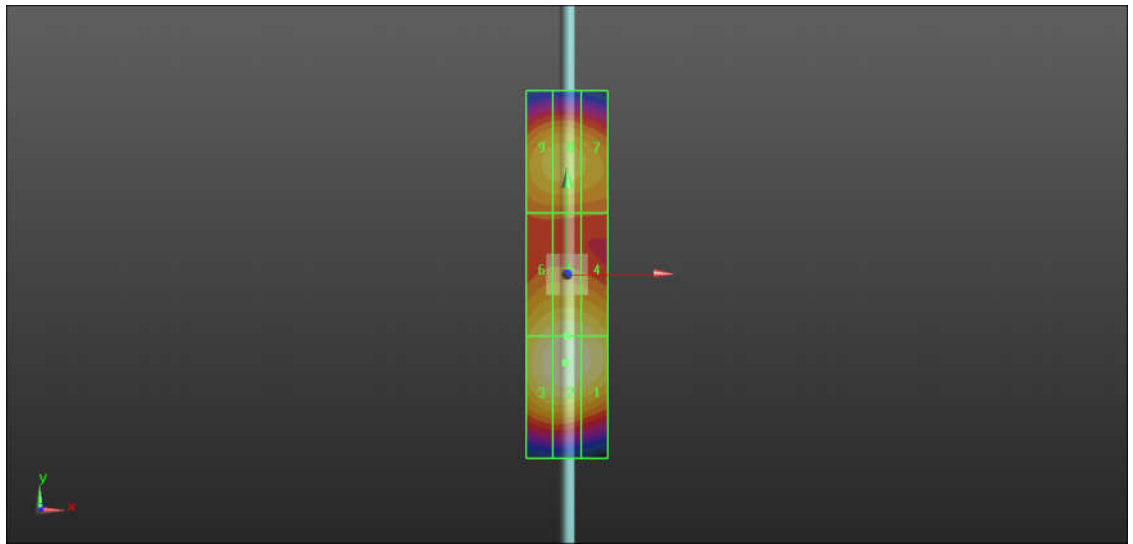
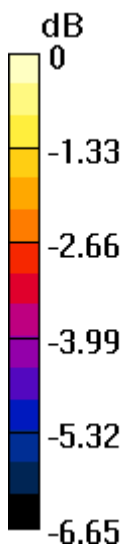
Grid 1 M3 89.66 V/m	Grid 2 M3 91.59 V/m	Grid 3 M3 90.42 V/m
Grid 4 M3 86.27 V/m	Grid 5 M3 87.62 V/m	Grid 6 M3 86.35 V/m
Grid 7 M3 79.59 V/m	Grid 8 M3 81.79 V/m	Grid 9 M3 81.09 V/m

Cursor:

Total = 87.89 V/m

E Category: M3

Location: -0.5, -21.5, 9.7 mm



0 dB = 87.89 V/m = 38.91 dBV/m



Appendix B. Plots of RF Emission Measurement

The plots are shown as follows.

01_HAC RF_GSM850_GSM Voice_Ch128_E

Communication System: UID 10021 - DAB, GSM-FDD (TDMA, GMSK); Frequency: 824.2 MHz; Duty Cycle: 1:8.6896

Medium: Air Medium parameters used: $\sigma = 0$ S/m, $\epsilon_r = 1$; $\rho = 0$ kg/m³

Ambient Temperature : 23.4 °C

DASY5 Configuration:

- Probe: EF3DV3 - SN4053; ConvF(1, 1, 1); Calibrated: 2020.04.27;
- Sensor-Surface: (Fix Surface)
- Electronics: DAE4 Sn1356; Calibrated: 2020.05.19
- Phantom: HAC Test Arch; Type: SD HAC P01 BA;
- Measurement SW: DASY52, Version 52.8 (8); SEMCAD X Version 14.6.10 (7331)

Ch128/Hearing Aid Compatibility Test (101x101x1): Interpolated grid: dx=0.5000 mm, dy=0.5000 mm

Device Reference Point: 0, 0, -6.3 mm

Reference Value = 87.41 V/m; Power Drift = 0.01 dB

Applied MIF = 3.63 dB

RF audio interference level = 41.66 dBV/m

Emission category: M3

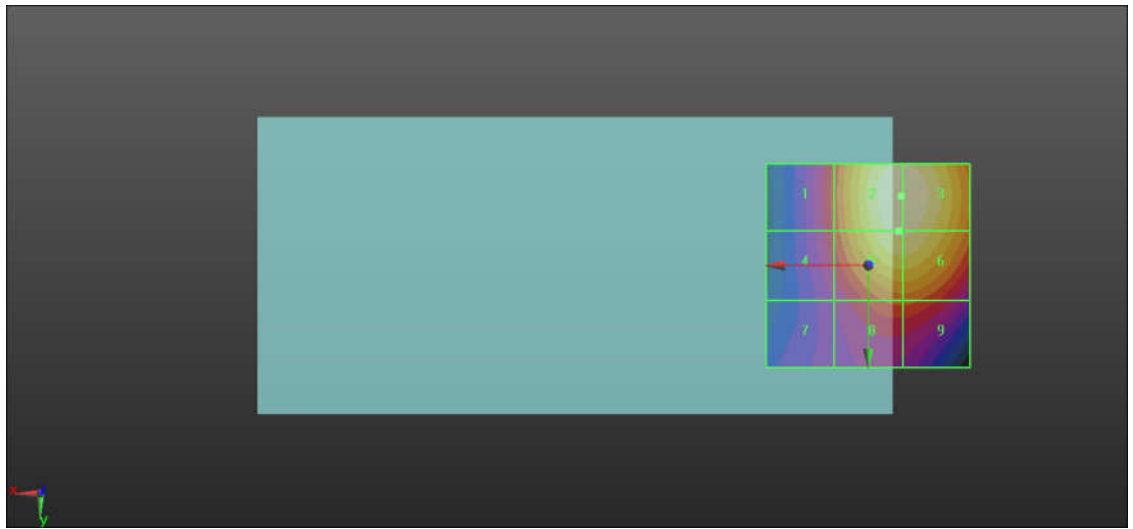
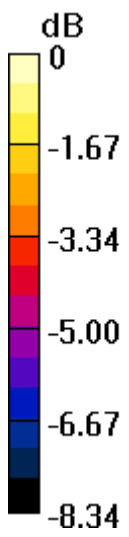
MIF scaled E-field

Grid 1 M4 38.08 dBV/m	Grid 2 M3 41.66 dBV/m	Grid 3 M3 41.66 dBV/m
Grid 4 M4 37.88 dBV/m	Grid 5 M3 41.28 dBV/m	Grid 6 M3 41.27 dBV/m
Grid 7 M4 36.72 dBV/m	Grid 8 M4 38.57 dBV/m	Grid 9 M4 38.57 dBV/m

Total = 41.66 dBV/m

E Category: M3

Location: -8, -17, 7.7 mm



0 dB = 121.1 V/m = 41.66 dBV/m

02_HAC RF_GSM850_GSM Voice_Ch189_E

Communication System: UID 10021 - DAB, GSM-FDD (TDMA, GMSK); Frequency: 836.4 MHz; Duty Cycle: 1:8.6896

Medium: Air Medium parameters used: $\sigma = 0$ S/m, $\epsilon_r = 1$; $\rho = 0$ kg/m³

Ambient Temperature : 23.4 °C

DASY5 Configuration:

- Probe: EF3DV3 - SN4053; ConvF(1, 1, 1); Calibrated: 2020.04.27;
- Sensor-Surface: (Fix Surface)
- Electronics: DAE4 Sn1356; Calibrated: 2020.05.19
- Phantom: HAC Test Arch; Type: SD HAC P01 BA;
- Measurement SW: DASY52, Version 52.8 (8); SEMCAD X Version 14.6.10 (7331)

Ch189/Hearing Aid Compatibility Test (101x101x1): Interpolated grid: dx=0.5000 mm, dy=0.5000 mm

Device Reference Point: 0, 0, -6.3 mm

Reference Value = 86.79 V/m; Power Drift = 0.01 dB

Applied MIF = 3.63 dB

RF audio interference level = 41.62 dBV/m

Emission category: M3

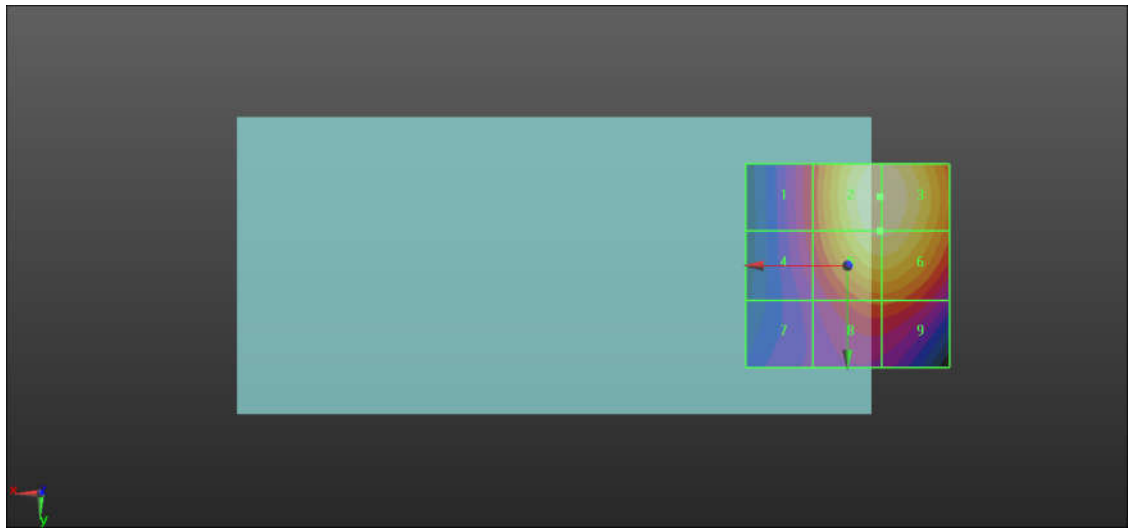
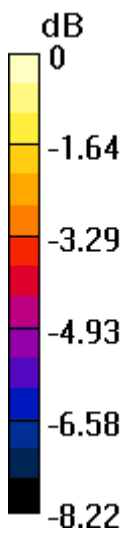
MIF scaled E-field

Grid 1 M4 37.99 dBV/m	Grid 2 M3 41.62 dBV/m	Grid 3 M3 41.62 dBV/m
Grid 4 M4 37.8 dBV/m	Grid 5 M3 41.24 dBV/m	Grid 6 M3 41.24 dBV/m
Grid 7 M4 36.62 dBV/m	Grid 8 M4 38.55 dBV/m	Grid 9 M4 38.55 dBV/m

Total = 41.62 dBV/m

E Category: M3

Location: -8, -17, 7.7 mm



0 dB = 120.5 V/m = 41.62 dBV/m

03_HAC RF_GSM850_GSM Voice_Ch251_E

Communication System: UID 10021 - DAB, GSM-FDD (TDMA, GMSK); Frequency: 848.8 MHz; Duty Cycle: 1:8.6896

Medium: Air Medium parameters used: $\sigma = 0$ S/m, $\epsilon_r = 1$; $\rho = 0$ kg/m³

Ambient Temperature : 23.4 °C

DASY5 Configuration:

- Probe: EF3DV3 - SN4053; ConvF(1, 1, 1); Calibrated: 2020.04.27;
- Sensor-Surface: (Fix Surface)
- Electronics: DAE4 Sn1356; Calibrated: 2020.05.19
- Phantom: HAC Test Arch; Type: SD HAC P01 BA;
- Measurement SW: DASY52, Version 52.8 (8); SEMCAD X Version 14.6.10 (7331)

Ch251/Hearing Aid Compatibility Test (101x101x1): Interpolated grid: dx=0.5000 mm, dy=0.5000 mm

Device Reference Point: 0, 0, -6.3 mm

Reference Value = 87.02 V/m; Power Drift = 0.02 dB

Applied MIF = 3.63 dB

RF audio interference level = 41.65 dBV/m

Emission category: M3

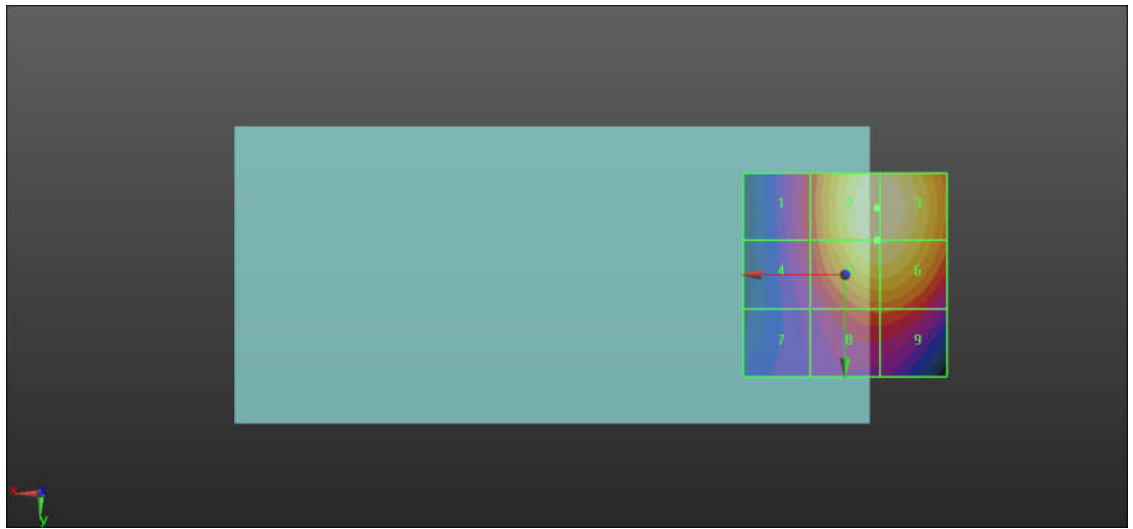
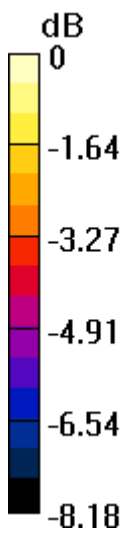
MIF scaled E-field

Grid 1 M4 37.97 dBV/m	Grid 2 M3 41.65 dBV/m	Grid 3 M3 41.65 dBV/m
Grid 4 M4 37.78 dBV/m	Grid 5 M3 41.27 dBV/m	Grid 6 M3 41.27 dBV/m
Grid 7 M4 36.61 dBV/m	Grid 8 M4 38.58 dBV/m	Grid 9 M4 38.58 dBV/m

Total = 41.65 dBV/m

E Category: M3

Location: -8, -16.5, 7.7 mm



0 dB = 120.9 V/m = 41.65 dBV/m

04_HAC RF_GSM1900_GSM Voice_Ch512_E

Communication System: UID 10021 - DAB, GSM-FDD (TDMA, GMSK); Frequency: 1850.2 MHz; Duty Cycle: 1:8.6896

Medium: Air Medium parameters used: $\sigma = 0$ S/m, $\epsilon_r = 1$; $\rho = 0$ kg/m³

Ambient Temperature : 23.4 °C

DASY5 Configuration:

- Probe: EF3DV3 - SN4053; ConvF(1, 1, 1); Calibrated: 2020.04.27;
- Sensor-Surface: (Fix Surface)
- Electronics: DAE4 Sn1356; Calibrated: 2020.05.19
- Phantom: HAC Test Arch; Type: SD HAC P01 BA;
- Measurement SW: DASY52, Version 52.8 (8); SEMCAD X Version 14.6.10 (7331)

Ch512/Hearing Aid Compatibility Test (101x101x1): Interpolated grid: dx=0.5000 mm, dy=0.5000 mm

Device Reference Point: 0, 0, -6.3 mm

Reference Value = 5.780 V/m; Power Drift = -0.16 dB

Applied MIF = 3.63 dB

RF audio interference level = 19.26 dBV/m

Emission category: M4

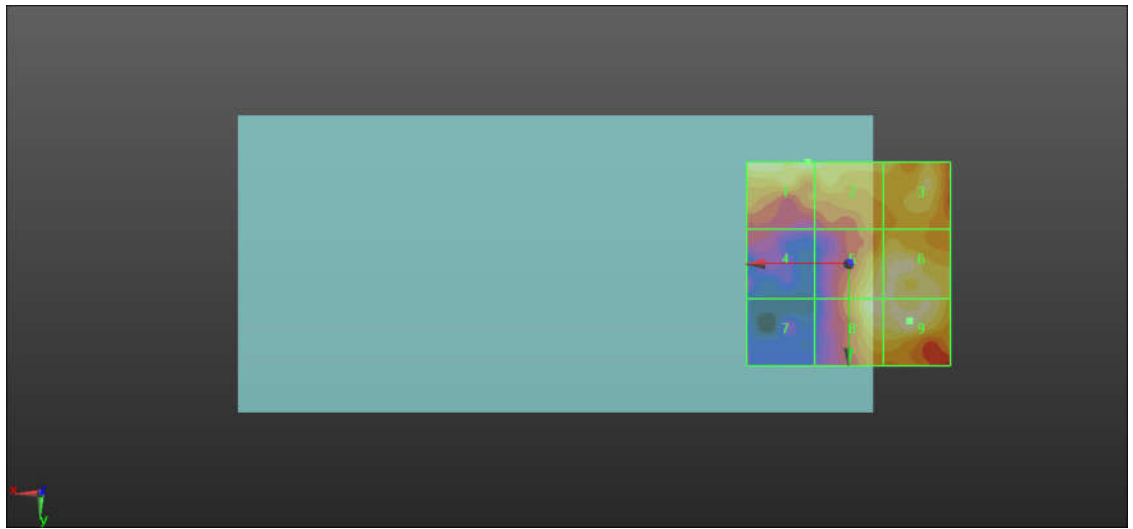
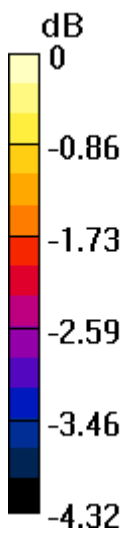
MIF scaled E-field

Grid 1 M4 19.21 dBV/m	Grid 2 M4 19.12 dBV/m	Grid 3 M4 18.79 dBV/m
Grid 4 M4 17.19 dBV/m	Grid 5 M4 19.05 dBV/m	Grid 6 M4 19.1 dBV/m
Grid 7 M4 16.42 dBV/m	Grid 8 M4 19.14 dBV/m	Grid 9 M4 19.26 dBV/m

Total = 19.26 dBV/m

E Category: M4

Location: -15, 14, 7.7 mm



0 dB = 9.184 V/m = 19.26 dBV/m

05_HAC RF_GSM1900_GSM Voice_Ch661_E

Communication System: UID 10021 - DAB, GSM-FDD (TDMA, GMSK); Frequency: 1880 MHz; Duty Cycle: 1:8.6896

Medium: Air Medium parameters used: $\sigma = 0$ S/m, $\epsilon_r = 1$; $\rho = 0$ kg/m³

Ambient Temperature : 23.4 °C

DASY5 Configuration:

- Probe: EF3DV3 - SN4053; ConvF(1, 1, 1); Calibrated: 2020.04.27;
- Sensor-Surface: (Fix Surface)
- Electronics: DAE4 Sn1356; Calibrated: 2020.05.19
- Phantom: HAC Test Arch; Type: SD HAC P01 BA;
- Measurement SW: DASY52, Version 52.8 (8); SEMCAD X Version 14.6.10 (7331)

Ch661/Hearing Aid Compatibility Test (101x101x1): Interpolated grid: dx=0.5000 mm, dy=0.5000 mm

Device Reference Point: 0, 0, -6.3 mm

Reference Value = 6.044 V/m; Power Drift = -0.13 dB

Applied MIF = 3.63 dB

RF audio interference level = 19.65 dBV/m

Emission category: M4

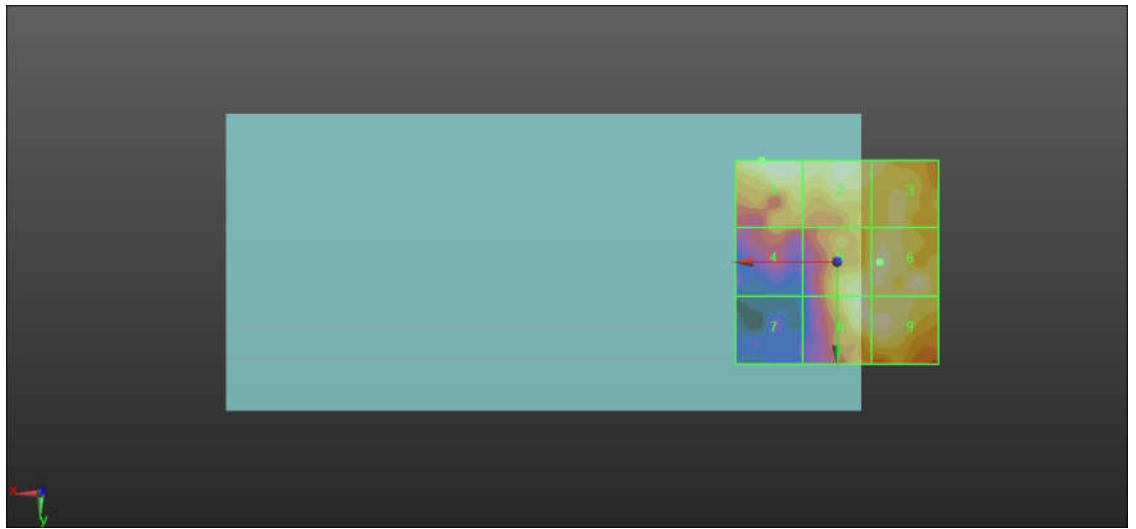
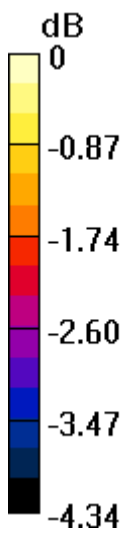
MIF scaled E-field

Grid 1 M4 19.65 dBV/m	Grid 2 M4 19.49 dBV/m	Grid 3 M4 19.36 dBV/m
Grid 4 M4 18.21 dBV/m	Grid 5 M4 19.48 dBV/m	Grid 6 M4 19.55 dBV/m
Grid 7 M4 16.78 dBV/m	Grid 8 M4 19.53 dBV/m	Grid 9 M4 19.51 dBV/m

Total = 19.65 dBV/m

E Category: M4

Location: 18.5, -25, 7.7 mm



0 dB = 9.602 V/m = 19.65 dBV/m

06_HAC RF_GSM1900_GSM Voice_Ch810_E

Communication System: UID 10021 - DAB, GSM-FDD (TDMA, GMSK); Frequency: 1909.8 MHz; Duty Cycle: 1:8.6896

Medium: Air Medium parameters used: $\sigma = 0$ S/m, $\epsilon_r = 1$; $\rho = 0$ kg/m³

Ambient Temperature : 23.4 °C

DASY5 Configuration:

- Probe: EF3DV3 - SN4053; ConvF(1, 1, 1); Calibrated: 2020.04.27;
- Sensor-Surface: (Fix Surface)
- Electronics: DAE4 Sn1356; Calibrated: 2020.05.19
- Phantom: HAC Test Arch; Type: SD HAC P01 BA;
- Measurement SW: DASY52, Version 52.8 (8); SEMCAD X Version 14.6.10 (7331)

Ch810/Hearing Aid Compatibility Test (101x101x1): Interpolated grid: dx=0.5000 mm, dy=0.5000 mm

Device Reference Point: 0, 0, -6.3 mm

Reference Value = 6.517 V/m; Power Drift = -0.03 dB

Applied MIF = 3.63 dB

RF audio interference level = 19.39 dBV/m

Emission category: M4

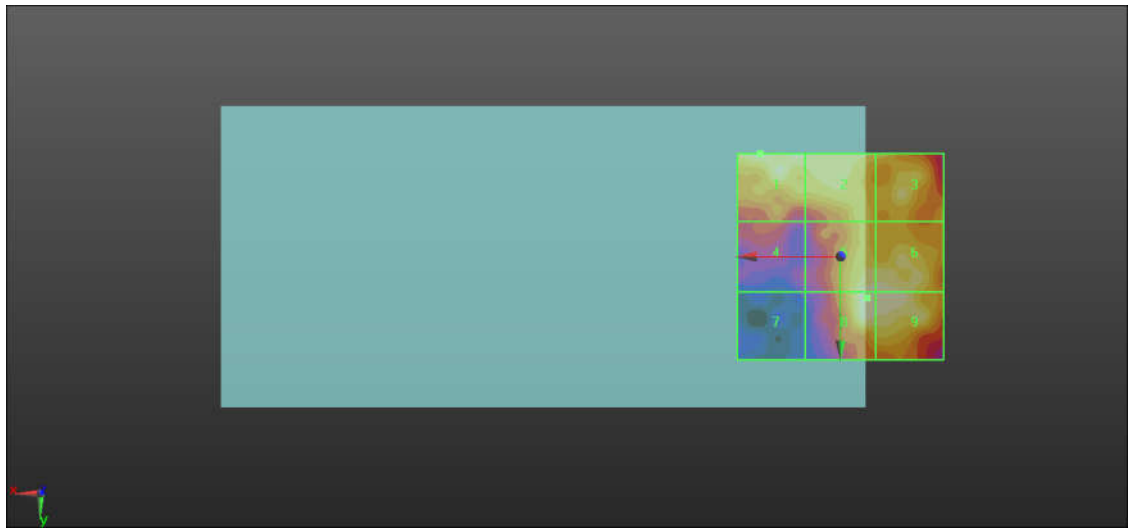
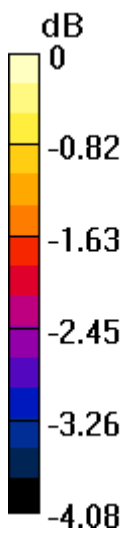
MIF scaled E-field

Grid 1 M4 19.39 dBV/m	Grid 2 M4 19.22 dBV/m	Grid 3 M4 18.96 dBV/m
Grid 4 M4 17.78 dBV/m	Grid 5 M4 19.29 dBV/m	Grid 6 M4 19.22 dBV/m
Grid 7 M4 16.62 dBV/m	Grid 8 M4 19.36 dBV/m	Grid 9 M4 19.27 dBV/m

Total = 19.39 dBV/m

E Category: M4

Location: 19.5, -25, 7.7 mm



0 dB = 9.325 V/m = 19.39 dBV/m

07_HAC RF_LTE Band 41_20M_QPSK_1RB_49offset_Ch39750_E

Communication System: UID 10172 - CAB, LTE-TDD (SC-FDMA, 1 RB, 20 MHz, QPSK);
 Frequency: 2506 MHz; Duty Cycle: 1:8.33681

Medium: Air Medium parameters used: $\sigma = 0$ S/m, $\epsilon_r = 1$; $\rho = 0$ kg/m³

Ambient Temperature : 23.4 °C

DASY5 Configuration:

- Probe: EF3DV3 - SN4053; ConvF(1, 1, 1); Calibrated: 2020.04.27;
- Sensor-Surface: (Fix Surface)
- Electronics: DAE4 Sn1356; Calibrated: 2020.05.19
- Phantom: HAC Test Arch; Type: SD HAC P01 BA;
- Measurement SW: DASY52, Version 52.8 (8); SEMCAD X Version 14.6.10 (7331)

Ch39750/Hearing Aid Compatibility Test (101x101x1): Interpolated grid: dx=0.5000 mm, dy=0.5000 mm

Device Reference Point: 0, 0, -6.3 mm

Reference Value = 5.543 V/m; Power Drift = -0.02 dB

Applied MIF = -1.62 dB

RF audio interference level = 18.40 dBV/m

Emission category: M4

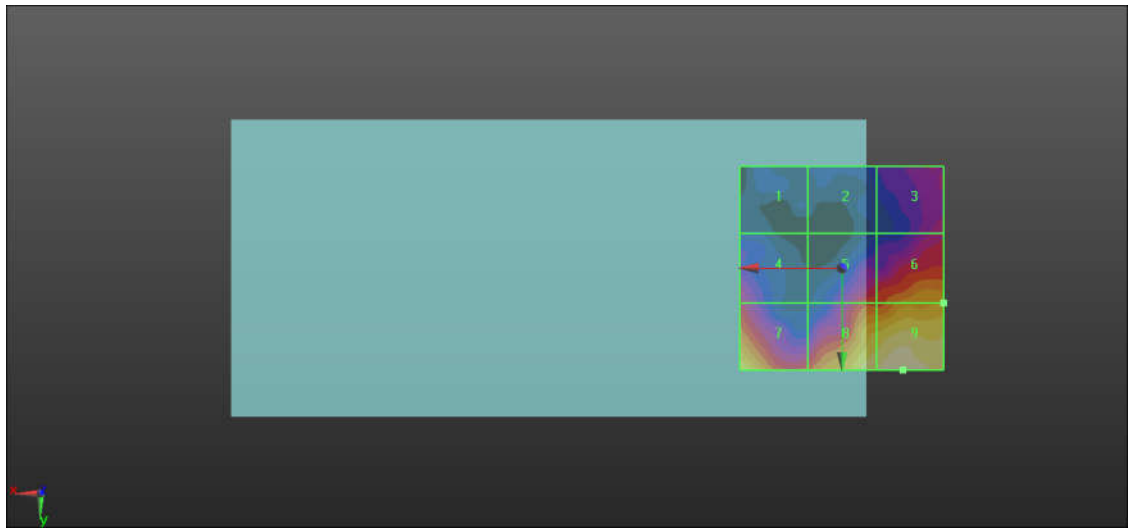
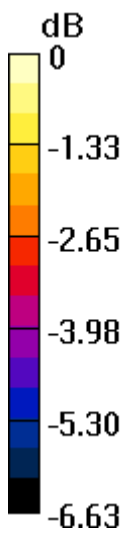
MIF scaled E-field

Grid 1 M4 13.06 dBV/m	Grid 2 M4 13.68 dBV/m	Grid 3 M4 14.88 dBV/m
Grid 4 M4 15.01 dBV/m	Grid 5 M4 15.63 dBV/m	Grid 6 M4 16.65 dBV/m
Grid 7 M4 17.67 dBV/m	Grid 8 M4 17.98 dBV/m	Grid 9 M4 18.4 dBV/m

Total = 18.40 dBV/m

E Category: M4

Location: -15, 25, 7.7 mm



0 dB = 8.318 V/m = 18.40 dBV/m

08_HAC RF_LTE Band 41_20M_QPSK_1RB_49offset_Ch40185_E

Communication System: UID 10172 - CAB, LTE-TDD (SC-FDMA, 1 RB, 20 MHz, QPSK);
 Frequency: 2549.5 MHz; Duty Cycle: 1:8.33681

Medium: Air Medium parameters used: $\sigma = 0$ S/m, $\epsilon_r = 1$; $\rho = 0$ kg/m³

Ambient Temperature : 23.4 °C

DASY5 Configuration:

- Probe: EF3DV3 - SN4053; ConvF(1, 1, 1); Calibrated: 2020.04.27;
- Sensor-Surface: (Fix Surface)
- Electronics: DAE4 Sn1356; Calibrated: 2020.05.19
- Phantom: HAC Test Arch; Type: SD HAC P01 BA;
- Measurement SW: DASY52, Version 52.8 (8); SEMCAD X Version 14.6.10 (7331)

Ch40185/Hearing Aid Compatibility Test (101x101x1): Interpolated grid: dx=0.5000 mm, dy=0.5000 mm

Device Reference Point: 0, 0, -6.3 mm

Reference Value = 7.413 V/m; Power Drift = -0.16 dB

Applied MIF = -1.62 dB

RF audio interference level = 17.55 dBV/m

Emission category: M4

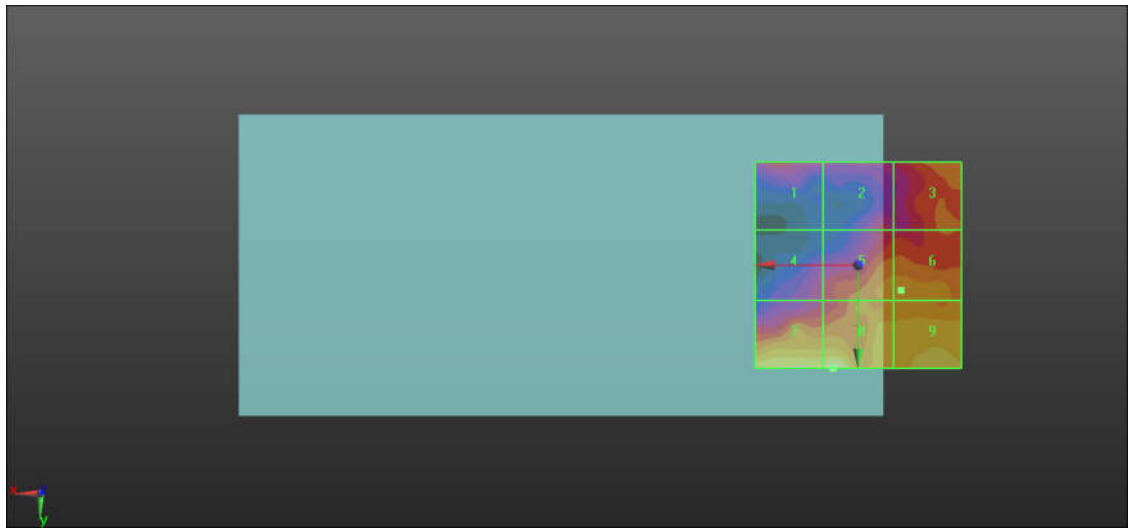
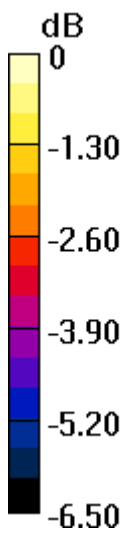
MIF scaled E-field

Grid 1 M4 14.57 dBV/m	Grid 2 M4 14.21 dBV/m	Grid 3 M4 15.26 dBV/m
Grid 4 M4 14.19 dBV/m	Grid 5 M4 15.61 dBV/m	Grid 6 M4 15.67 dBV/m
Grid 7 M4 16.95 dBV/m	Grid 8 M4 17.55 dBV/m	Grid 9 M4 16.57 dBV/m

Total = 17.55 dBV/m

E Category: M4

Location: 6, 25, 7.7 mm



0 dB = 7.539 V/m = 17.55 dBV/m

09_HAC RF_LTE Band 41_20M_QPSK_1RB_49offset_Ch40620_E

Communication System: UID 10172 - CAB, LTE-TDD (SC-FDMA, 1 RB, 20 MHz, QPSK);
 Frequency: 2593 MHz; Duty Cycle: 1:8.33681

Medium: Air Medium parameters used: $\sigma = 0$ S/m, $\epsilon_r = 1$; $\rho = 0$ kg/m³

Ambient Temperature : 23.4 °C

DASY5 Configuration:

- Probe: EF3DV3 - SN4053; ConvF(1, 1, 1); Calibrated: 2020.04.27;
- Sensor-Surface: (Fix Surface)
- Electronics: DAE4 Sn1356; Calibrated: 2020.05.19
- Phantom: HAC Test Arch; Type: SD HAC P01 BA;
- Measurement SW: DASY52, Version 52.8 (8); SEMCAD X Version 14.6.10 (7331)

Ch40620/Hearing Aid Compatibility Test (101x101x1): Interpolated grid: dx=0.5000 mm, dy=0.5000 mm

Device Reference Point: 0, 0, -6.3 mm

Reference Value = 7.836 V/m; Power Drift = -0.17 dB

Applied MIF = -1.62 dB

RF audio interference level = 17.50 dBV/m

Emission category: M4

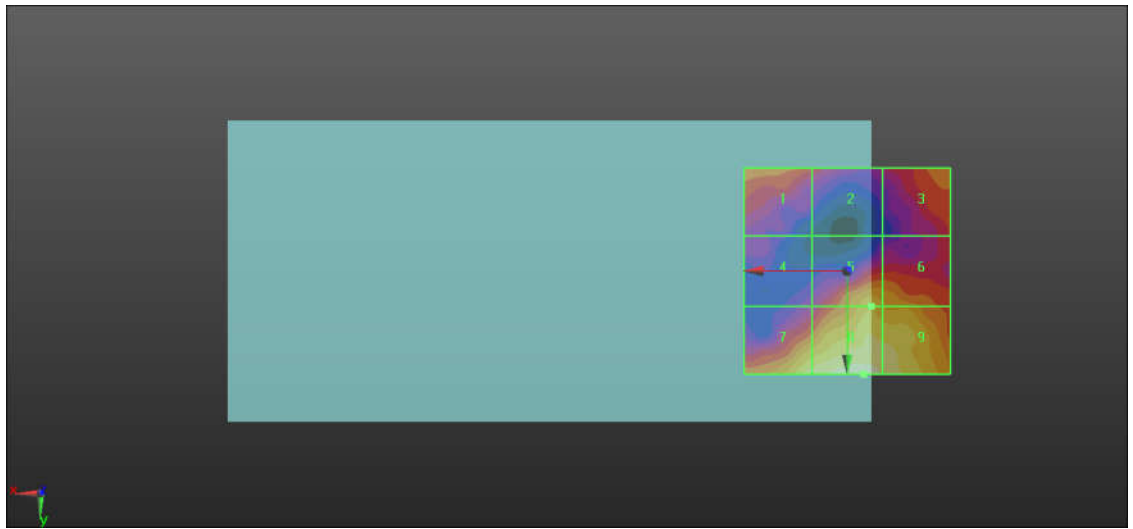
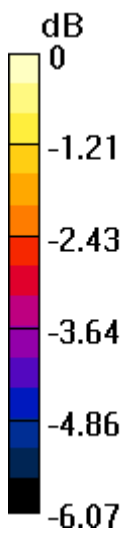
MIF scaled E-field

Grid 1 M4 15.54 dBV/m	Grid 2 M4 14.87 dBV/m	Grid 3 M4 15.36 dBV/m
Grid 4 M4 13.94 dBV/m	Grid 5 M4 16.15 dBV/m	Grid 6 M4 15.95 dBV/m
Grid 7 M4 16.98 dBV/m	Grid 8 M4 17.5 dBV/m	Grid 9 M4 17.02 dBV/m

Total = 17.50 dBV/m

E Category: M4

Location: -4, 25, 7.7 mm



0 dB = 7.497 V/m = 17.50 dBV/m

10_HAC RF_LTE Band 41_20M_QPSK_1RB_49offset_Ch41055_E

Communication System: UID 10172 - CAB, LTE-TDD (SC-FDMA, 1 RB, 20 MHz, QPSK);
 Frequency: 2636.5 MHz; Duty Cycle: 1:8.33681

Medium: Air Medium parameters used: $\sigma = 0$ S/m, $\epsilon_r = 1$; $\rho = 0$ kg/m³

Ambient Temperature : 23.4 °C

DASY5 Configuration:

- Probe: EF3DV3 - SN4053; ConvF(1, 1, 1); Calibrated: 2020.04.27;
- Sensor-Surface: (Fix Surface)
- Electronics: DAE4 Sn1356; Calibrated: 2020.05.19
- Phantom: HAC Test Arch; Type: SD HAC P01 BA;
- Measurement SW: DASY52, Version 52.8 (8); SEMCAD X Version 14.6.10 (7331)

Ch41055/Hearing Aid Compatibility Test (101x101x1): Interpolated grid: dx=0.5000 mm, dy=0.5000 mm

Device Reference Point: 0, 0, -6.3 mm

Reference Value = 7.066 V/m; Power Drift = -0.12 dB

Applied MIF = -1.62 dB

RF audio interference level = 17.37 dBV/m

Emission category: M4

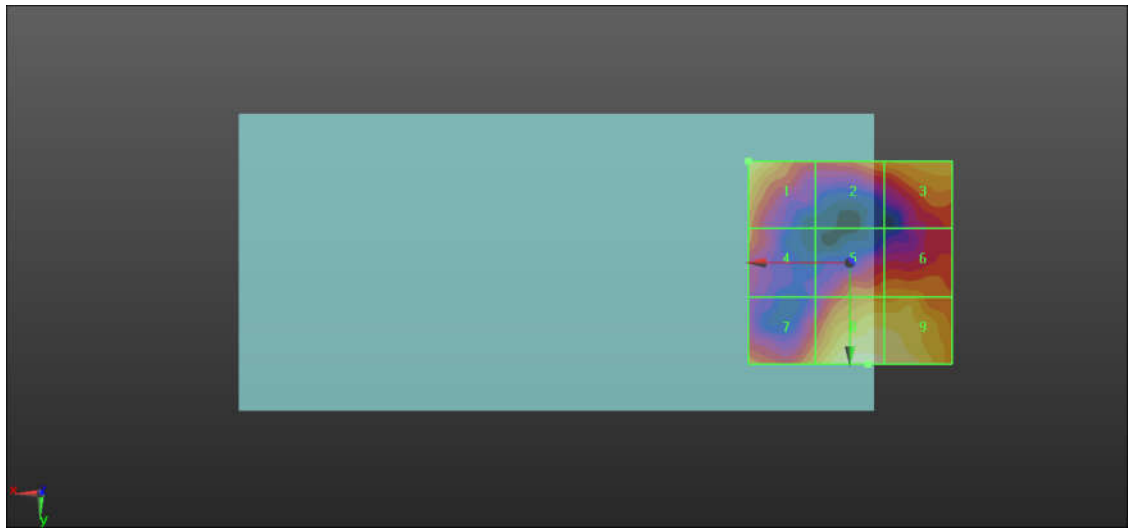
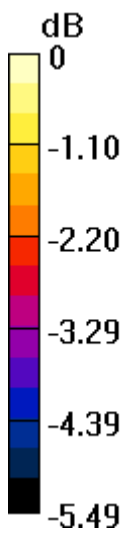
MIF scaled E-field

Grid 1 M4 16.92 dBV/m	Grid 2 M4 15.91 dBV/m	Grid 3 M4 16.33 dBV/m
Grid 4 M4 15.41 dBV/m	Grid 5 M4 15.75 dBV/m	Grid 6 M4 15.96 dBV/m
Grid 7 M4 16 dBV/m	Grid 8 M4 17.37 dBV/m	Grid 9 M4 16.97 dBV/m

Total = 17.37 dBV/m

E Category: M4

Location: -4.5, 25, 7.7 mm



0 dB = 7.389 V/m = 17.37 dBV/m

11_HAC RF_LTE Band 41_20M_QPSK_1RB_49offset_Ch41490_E

Communication System: UID 10172 - CAB, LTE-TDD (SC-FDMA, 1 RB, 20 MHz, QPSK);
 Frequency: 2680 MHz; Duty Cycle: 1:8.33681

Medium: Air Medium parameters used: $\sigma = 0 \text{ S/m}$, $\epsilon_r = 1$; $\rho = 0 \text{ kg/m}^3$

Ambient Temperature : 23.4 °C

DASY5 Configuration:

- Probe: EF3DV3 - SN4053; ConvF(1, 1, 1); Calibrated: 2020.04.27;
- Sensor-Surface: (Fix Surface)
- Electronics: DAE4 Sn1356; Calibrated: 2020.05.19
- Phantom: HAC Test Arch; Type: SD HAC P01 BA;
- Measurement SW: DASY52, Version 52.8 (8); SEMCAD X Version 14.6.10 (7331)

Ch41490/Hearing Aid Compatibility Test (101x101x1): Interpolated grid: dx=0.5000 mm, dy=0.5000 mm

Device Reference Point: 0, 0, -6.3 mm

Reference Value = 6.344 V/m; Power Drift = -0.07 dB

Applied MIF = -1.62 dB

RF audio interference level = 17.74 dBV/m

Emission category: M4

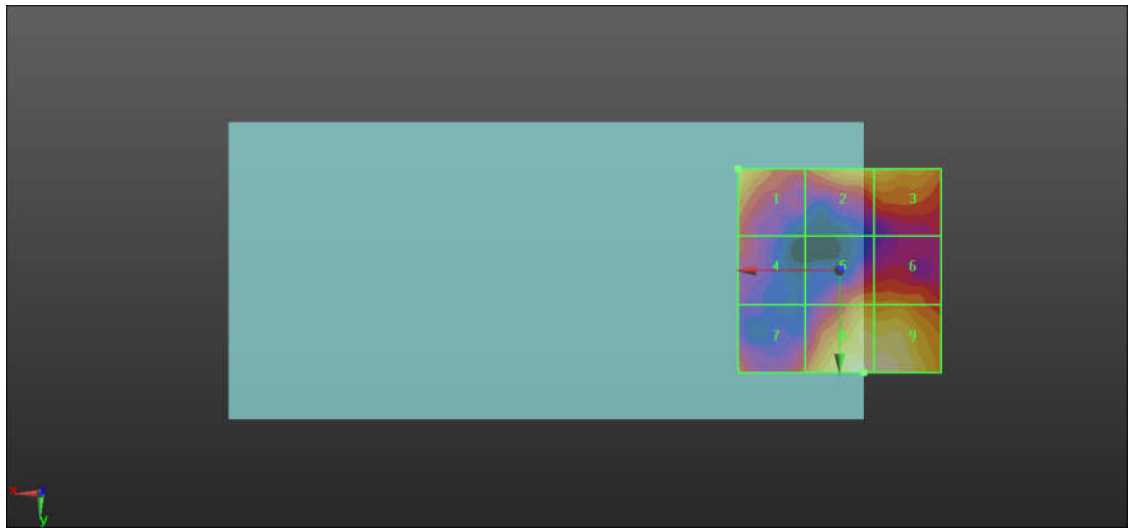
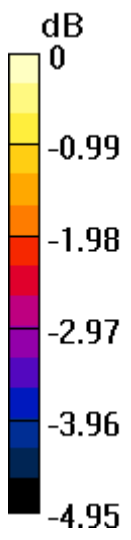
MIF scaled E-field

Grid 1 M4 17.25 dBV/m	Grid 2 M4 17.04 dBV/m	Grid 3 M4 17.06 dBV/m
Grid 4 M4 15.66 dBV/m	Grid 5 M4 16.32 dBV/m	Grid 6 M4 16.31 dBV/m
Grid 7 M4 16.11 dBV/m	Grid 8 M4 17.74 dBV/m	Grid 9 M4 17.64 dBV/m

Total = 17.74 dBV/m

E Category: M4

Location: -6, 25, 7.7 mm



0 dB = 7.707 V/m = 17.74 dBV/m

12_HAC RF_LTE Band 41_20M_QPSK_1RB_49offset_Ch39750_E

Communication System: UID 10172 - CAB, LTE-TDD (SC-FDMA, 1 RB, 20 MHz, QPSK);
 Frequency: 2506 MHz; Duty Cycle: 1:8.33681

Medium: Air Medium parameters used: $\sigma = 0$ S/m, $\epsilon_r = 1$; $\rho = 0$ kg/m³

Ambient Temperature : 23.4 °C

DASY5 Configuration:

- Probe: EF3DV3 - SN4053; ConvF(1, 1, 1); Calibrated: 2020.04.27;
- Sensor-Surface: (Fix Surface)
- Electronics: DAE4 Sn1356; Calibrated: 2020.05.19
- Phantom: HAC Test Arch; Type: SD HAC P01 BA;
- Measurement SW: DASY52, Version 52.8 (8); SEMCAD X Version 14.6.10 (7331)

Ch39750/Hearing Aid Compatibility Test (101x101x1): Interpolated grid: dx=0.5000 mm, dy=0.5000 mm

Device Reference Point: 0, 0, -6.3 mm

Reference Value = 5.145 V/m; Power Drift = -0.03 dB

Applied MIF = -1.62 dB

RF audio interference level = 17.77 dBV/m

Emission category: M4

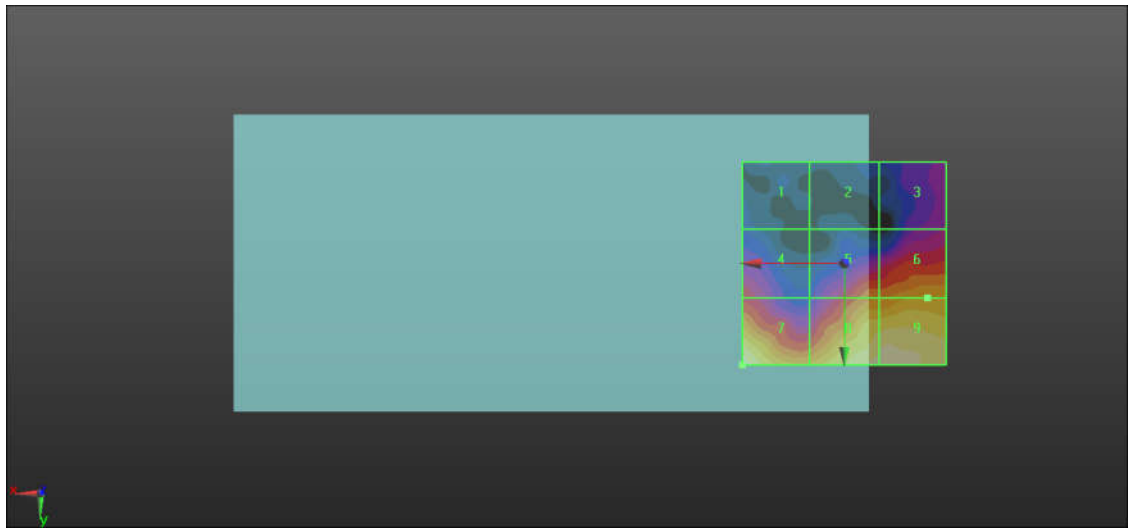
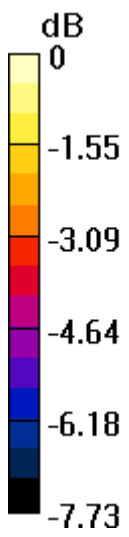
MIF scaled E-field

Grid 1 M4 11.58 dBV/m	Grid 2 M4 11.69 dBV/m	Grid 3 M4 13.19 dBV/m
Grid 4 M4 14.08 dBV/m	Grid 5 M4 15.15 dBV/m	Grid 6 M4 15.76 dBV/m
Grid 7 M4 17.77 dBV/m	Grid 8 M4 17.5 dBV/m	Grid 9 M4 17.6 dBV/m

Total = 17.77 dBV/m

E Category: M4

Location: 25, 25, 7.7 mm



0 dB = 7.732 V/m = 17.77 dBV/m

13_HAC RF_LTE Band 41_20M_QPSK_1RB_49offset_Ch40185_E

Communication System: UID 10172 - CAB, LTE-TDD (SC-FDMA, 1 RB, 20 MHz, QPSK);
 Frequency: 2549.5 MHz; Duty Cycle: 1:8.33681

Medium: Air Medium parameters used: $\sigma = 0$ S/m, $\epsilon_r = 1$; $\rho = 0$ kg/m³

Ambient Temperature : 23.4 °C

DASY5 Configuration:

- Probe: EF3DV3 - SN4053; ConvF(1, 1, 1); Calibrated: 2020.04.27;
- Sensor-Surface: (Fix Surface)
- Electronics: DAE4 Sn1356; Calibrated: 2020.05.19
- Phantom: HAC Test Arch; Type: SD HAC P01 BA;
- Measurement SW: DASY52, Version 52.8 (8); SEMCAD X Version 14.6.10 (7331)

Ch40185/Hearing Aid Compatibility Test (101x101x1): Interpolated grid: dx=0.5000 mm, dy=0.5000 mm

Device Reference Point: 0, 0, -6.3 mm

Reference Value = 7.294 V/m; Power Drift = 0.03 dB

Applied MIF = -1.62 dB

RF audio interference level = 17.46 dBV/m

Emission category: M4

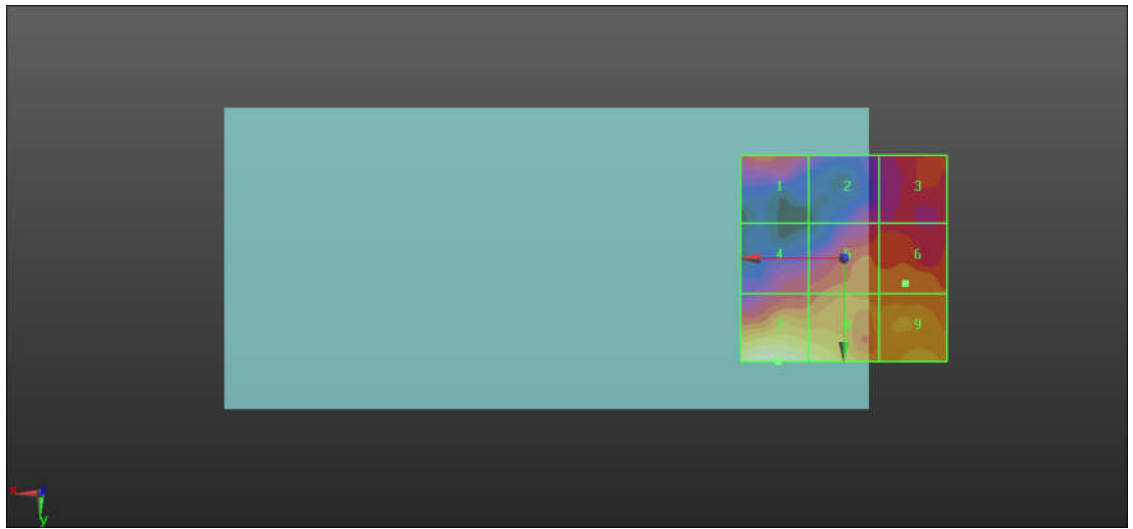
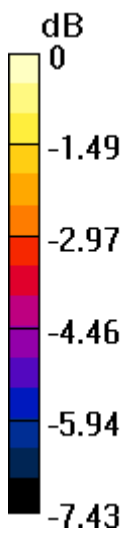
MIF scaled E-field

Grid 1 M4 14.48 dBV/m	Grid 2 M4 13.44 dBV/m	Grid 3 M4 14.36 dBV/m
Grid 4 M4 14.08 dBV/m	Grid 5 M4 14.96 dBV/m	Grid 6 M4 15.01 dBV/m
Grid 7 M4 17.46 dBV/m	Grid 8 M4 16.93 dBV/m	Grid 9 M4 15.83 dBV/m

Total = 17.46 dBV/m

E Category: M4

Location: 16, 25, 7.7 mm



0 dB = 7.461 V/m = 17.46 dBV/m

14_HAC RF_LTE Band 41_20M_QPSK_1RB_49offset_Ch40620_E

Communication System: UID 10172 - CAB, LTE-TDD (SC-FDMA, 1 RB, 20 MHz, QPSK);
 Frequency: 2593 MHz; Duty Cycle: 1:8.33681

Medium: Air Medium parameters used: $\sigma = 0$ S/m, $\epsilon_r = 1$; $\rho = 0$ kg/m³

Ambient Temperature : 23.4 °C

DASY5 Configuration:

- Probe: EF3DV3 - SN4053; ConvF(1, 1, 1); Calibrated: 2020.04.27;
- Sensor-Surface: (Fix Surface)
- Electronics: DAE4 Sn1356; Calibrated: 2020.05.19
- Phantom: HAC Test Arch; Type: SD HAC P01 BA;
- Measurement SW: DASY52, Version 52.8 (8); SEMCAD X Version 14.6.10 (7331)

Ch40620/Hearing Aid Compatibility Test (101x101x1): Interpolated grid: dx=0.5000 mm, dy=0.5000 mm

Device Reference Point: 0, 0, -6.3 mm

Reference Value = 6.631 V/m; Power Drift = -0.17 dB

Applied MIF = -1.62 dB

RF audio interference level = 16.80 dBV/m

Emission category: M4

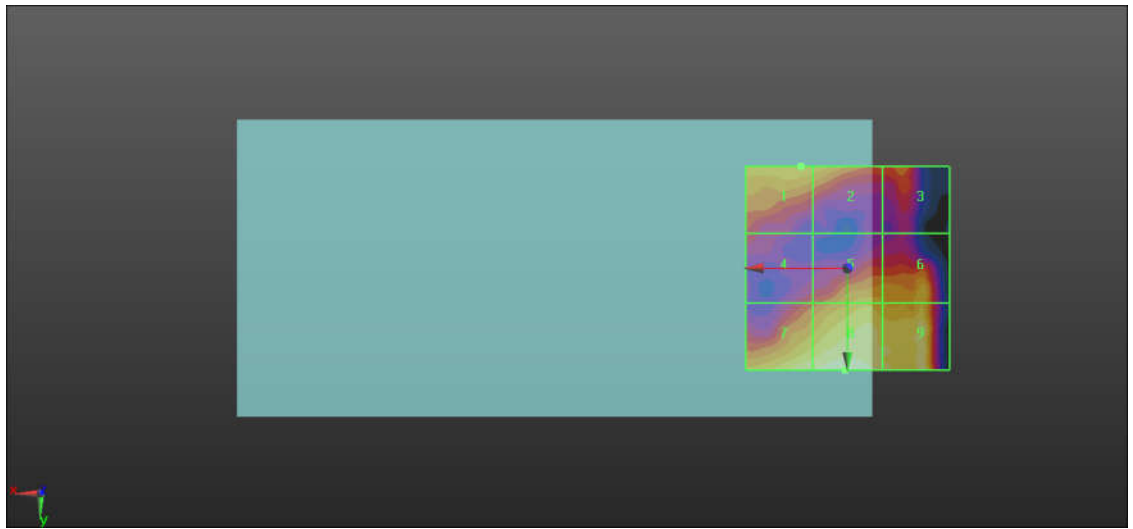
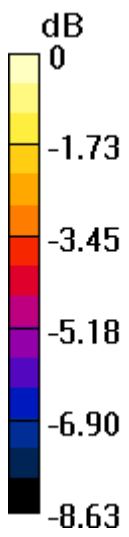
MIF scaled E-field

Grid 1 M4 15.11 dBV/m	Grid 2 M4 14.98 dBV/m	Grid 3 M4 14 dBV/m
Grid 4 M4 13.08 dBV/m	Grid 5 M4 14.88 dBV/m	Grid 6 M4 15.09 dBV/m
Grid 7 M4 16.37 dBV/m	Grid 8 M4 16.8 dBV/m	Grid 9 M4 16.52 dBV/m

Total = 16.80 dBV/m

E Category: M4

Location: 0.5, 25, 7.7 mm



0 dB = 6.919 V/m = 16.80 dBV/m

15_HAC RF_LTE Band 41_20M_QPSK_1RB_49offset_Ch41055_E

Communication System: UID 10172 - CAB, LTE-TDD (SC-FDMA, 1 RB, 20 MHz, QPSK);
 Frequency: 2636.5 MHz; Duty Cycle: 1:8.33681

Medium: Air Medium parameters used: $\sigma = 0$ S/m, $\epsilon_r = 1$; $\rho = 0$ kg/m³

Ambient Temperature : 23.4 °C

DASY5 Configuration:

- Probe: EF3DV3 - SN4053; ConvF(1, 1, 1); Calibrated: 2020.04.27;
- Sensor-Surface: (Fix Surface)
- Electronics: DAE4 Sn1356; Calibrated: 2020.05.19
- Phantom: HAC Test Arch; Type: SD HAC P01 BA;
- Measurement SW: DASY52, Version 52.8 (8); SEMCAD X Version 14.6.10 (7331)

Ch41055/Hearing Aid Compatibility Test (101x101x1): Interpolated grid: dx=0.5000 mm, dy=0.5000 mm

Device Reference Point: 0, 0, -6.3 mm

Reference Value = 5.571 V/m; Power Drift = -0.03 dB

Applied MIF = -1.62 dB

RF audio interference level = 16.73 dBV/m

Emission category: M4

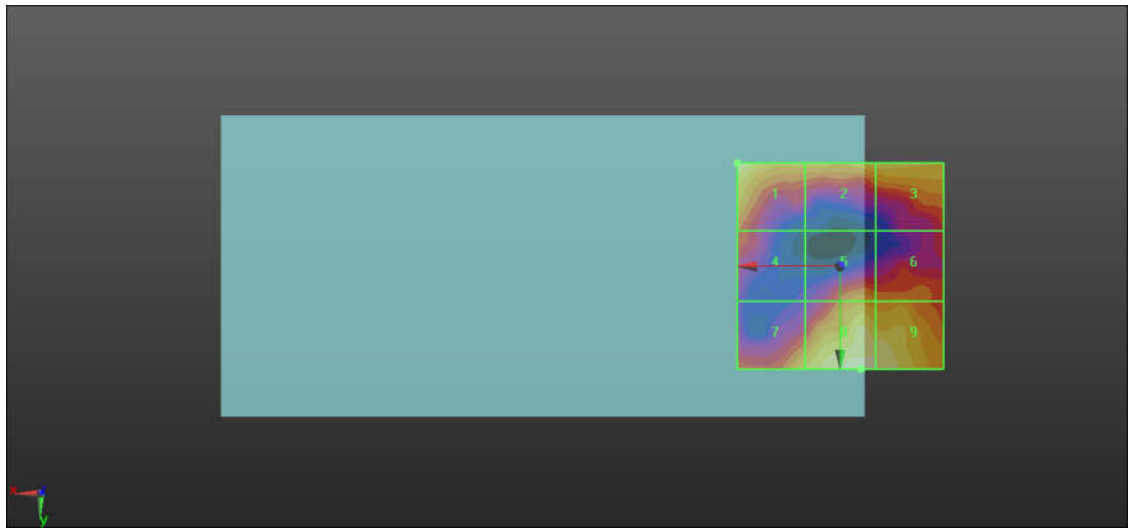
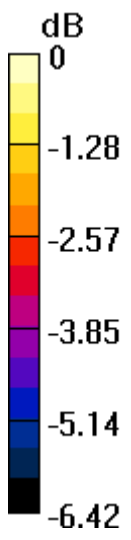
MIF scaled E-field

Grid 1 M4 16.48 dBV/m	Grid 2 M4 15.78 dBV/m	Grid 3 M4 15.84 dBV/m
Grid 4 M4 14.23 dBV/m	Grid 5 M4 14.91 dBV/m	Grid 6 M4 14.78 dBV/m
Grid 7 M4 15.57 dBV/m	Grid 8 M4 16.73 dBV/m	Grid 9 M4 16.4 dBV/m

Total = 16.73 dBV/m

E Category: M4

Location: -5, 25, 7.7 mm



0 dB = 6.863 V/m = 16.73 dBV/m

16_HAC RF_LTE Band 41_20M_QPSK_1RB_49offset_Ch41490_E

Communication System: UID 10172 - CAB, LTE-TDD (SC-FDMA, 1 RB, 20 MHz, QPSK);
 Frequency: 2680 MHz; Duty Cycle: 1:8.33681

Medium: Air Medium parameters used: $\sigma = 0$ S/m, $\epsilon_r = 1$; $\rho = 0$ kg/m³

Ambient Temperature : 23.4 °C

DASY5 Configuration:

- Probe: EF3DV3 - SN4053; ConvF(1, 1, 1); Calibrated: 2020.04.27;
- Sensor-Surface: (Fix Surface)
- Electronics: DAE4 Sn1356; Calibrated: 2020.05.19
- Phantom: HAC Test Arch; Type: SD HAC P01 BA;
- Measurement SW: DASY52, Version 52.8 (8); SEMCAD X Version 14.6.10 (7331)

Ch41490/Hearing Aid Compatibility Test (101x101x1): Interpolated grid: dx=0.5000 mm, dy=0.5000 mm

Device Reference Point: 0, 0, -6.3 mm

Reference Value = 5.173 V/m; Power Drift = -0.17 dB

Applied MIF = -1.62 dB

RF audio interference level = 16.23 dBV/m

Emission category: M4

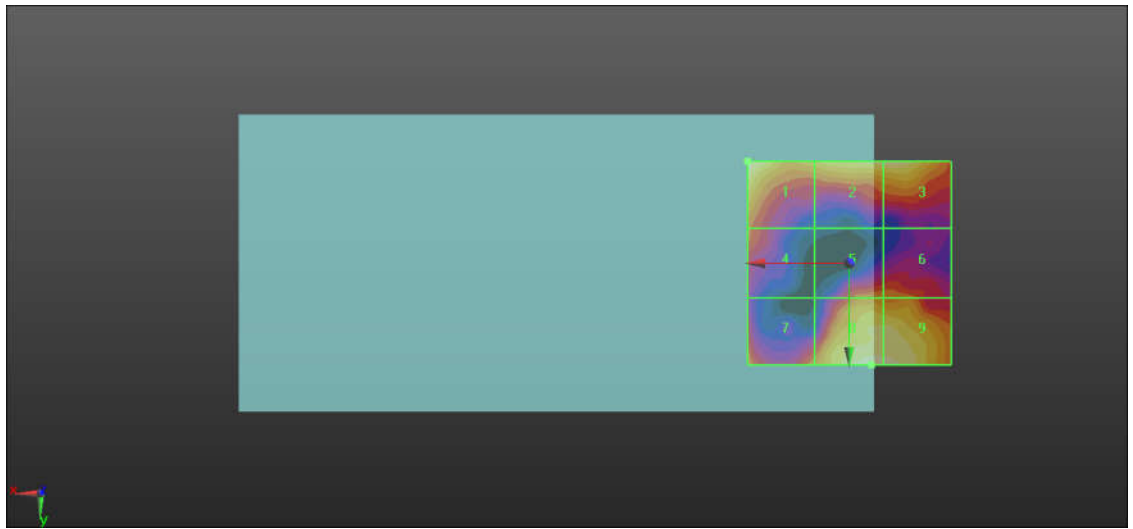
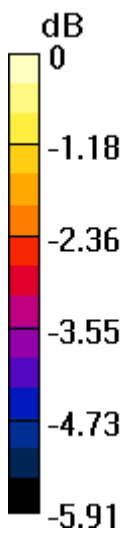
MIF scaled E-field

Grid 1 M4 16.21 dBV/m	Grid 2 M4 15.95 dBV/m	Grid 3 M4 16 dBV/m
Grid 4 M4 14.02 dBV/m	Grid 5 M4 14.3 dBV/m	Grid 6 M4 14.17 dBV/m
Grid 7 M4 14.49 dBV/m	Grid 8 M4 16.23 dBV/m	Grid 9 M4 16.05 dBV/m

Total = 16.23 dBV/m

E Category: M4

Location: -5.5, 25, 7.7 mm



0 dB = 6.478 V/m = 16.23 dBV/m

17_HAC RF_GSM850_GSM Voice_Ch128_E

Communication System: UID 10021 - DAB, GSM-FDD (TDMA, GMSK); Frequency: 824.2 MHz; Duty Cycle: 1:8.6896

Medium: Air Medium parameters used: $\sigma = 0 \text{ S/m}$, $\epsilon_r = 1$; $\rho = 0 \text{ kg/m}^3$

Ambient Temperature : 23.4 °C

DASY5 Configuration:

- Probe: EF3DV3 - SN4053; ConvF(1, 1, 1); Calibrated: 2020.04.27;
- Sensor-Surface: (Fix Surface)
- Electronics: DAE4 Sn1356; Calibrated: 2020.05.19
- Phantom: HAC Test Arch; Type: SD HAC P01 BA;
- Measurement SW: DASY52, Version 52.8 (8); SEMCAD X Version 14.6.10 (7331)

Ch128/Hearing Aid Compatibility Test (101x101x1): Interpolated grid: dx=0.5000 mm, dy=0.5000 mm

Device Reference Point: 0, 0, -6.3 mm

Reference Value = 51.61 V/m; Power Drift = 0.01 dB

Applied MIF = 3.63 dB

RF audio interference level = 36.96 dBV/m

Emission category: M4

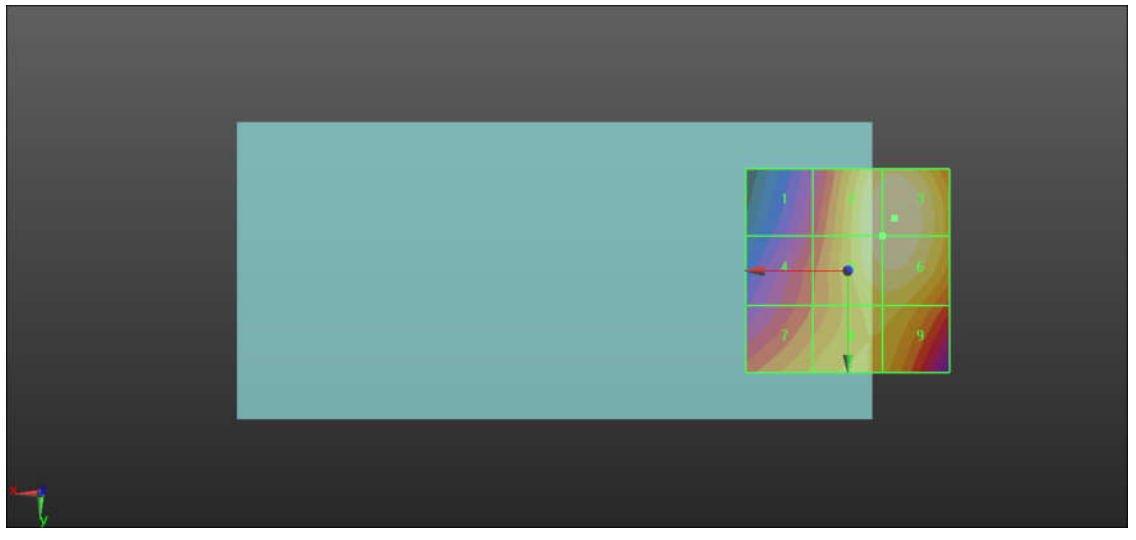
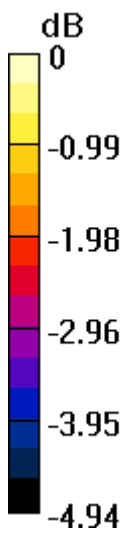
MIF scaled E-field

Grid 1 M4 34.57 dBV/m	Grid 2 M4 36.87 dBV/m	Grid 3 M4 36.96 dBV/m
Grid 4 M4 35.02 dBV/m	Grid 5 M4 36.84 dBV/m	Grid 6 M4 36.91 dBV/m
Grid 7 M4 35.73 dBV/m	Grid 8 M4 36.15 dBV/m	Grid 9 M4 36.15 dBV/m

Total = 36.96 dBV/m

E Category: M4

Location: -11.5, -13, 7.7 mm



0 dB = 70.45 V/m = 36.96 dBV/m

18_HAC RF_GSM850_GSM Voice_Ch189_E

Communication System: UID 10021 - DAB, GSM-FDD (TDMA, GMSK); Frequency: 836.4 MHz; Duty Cycle: 1:8.6896

Medium: Air Medium parameters used: $\sigma = 0$ S/m, $\epsilon_r = 1$; $\rho = 0$ kg/m³

Ambient Temperature : 23.4 °C

DASY5 Configuration:

- Probe: EF3DV3 - SN4053; ConvF(1, 1, 1); Calibrated: 2020.04.27;
- Sensor-Surface: (Fix Surface)
- Electronics: DAE4 Sn1356; Calibrated: 2020.05.19
- Phantom: HAC Test Arch; Type: SD HAC P01 BA;
- Measurement SW: DASY52, Version 52.8 (8); SEMCAD X Version 14.6.10 (7331)

Ch189/Hearing Aid Compatibility Test (101x101x1): Interpolated grid: dx=0.5000 mm, dy=0.5000 mm

Device Reference Point: 0, 0, -6.3 mm

Reference Value = 52.67 V/m; Power Drift = -0.02 dB

Applied MIF = 3.63 dB

RF audio interference level = 36.61 dBV/m

Emission category: M4

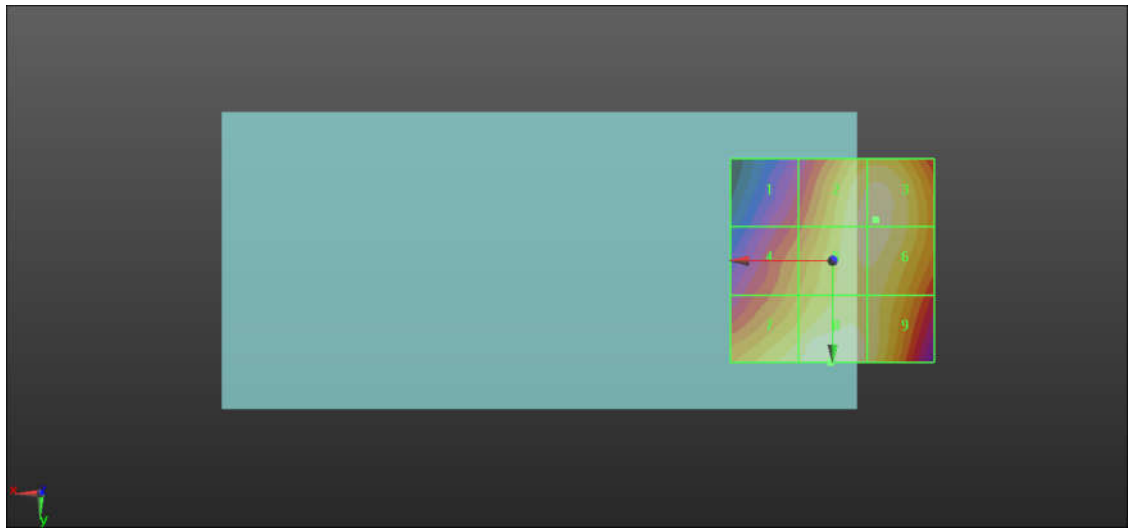
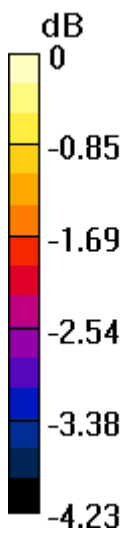
MIF scaled E-field

Grid 1 M4 34.8 dBV/m	Grid 2 M4 36.45 dBV/m	Grid 3 M4 36.48 dBV/m
Grid 4 M4 35.5 dBV/m	Grid 5 M4 36.45 dBV/m	Grid 6 M4 36.47 dBV/m
Grid 7 M4 36.29 dBV/m	Grid 8 M4 36.61 dBV/m	Grid 9 M4 36.3 dBV/m

Total = 36.61 dBV/m

E Category: M4

Location: 0.5, 25, 7.7 mm



0 dB = 67.71 V/m = 36.61 dBV/m

19_HAC RF_GSM850_GSM Voice_Ch251_E

Communication System: UID 10021 - DAB, GSM-FDD (TDMA, GMSK); Frequency: 848.8 MHz; Duty Cycle: 1:8.6896

Medium: Air Medium parameters used: $\sigma = 0 \text{ S/m}$, $\epsilon_r = 1$; $\rho = 0 \text{ kg/m}^3$

Ambient Temperature : 23.4 °C

DASY5 Configuration:

- Probe: EF3DV3 - SN4053; ConvF(1, 1, 1); Calibrated: 2020.04.27;
- Sensor-Surface: (Fix Surface)
- Electronics: DAE4 Sn1356; Calibrated: 2020.05.19
- Phantom: HAC Test Arch; Type: SD HAC P01 BA;
- Measurement SW: DASY52, Version 52.8 (8); SEMCAD X Version 14.6.10 (7331)

Ch251/Hearing Aid Compatibility Test (101x101x1): Interpolated grid: dx=0.5000 mm, dy=0.5000 mm

Device Reference Point: 0, 0, -6.3 mm

Reference Value = 53.02 V/m; Power Drift = 0.04 dB

Applied MIF = 3.63 dB

RF audio interference level = 37.10 dBV/m

Emission category: M4

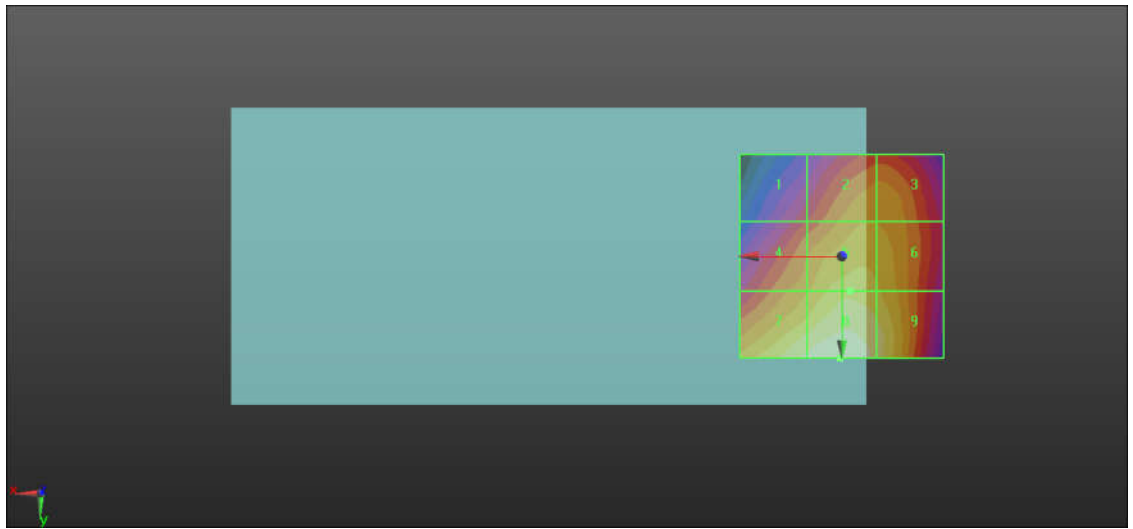
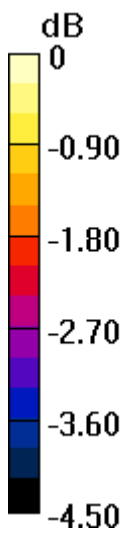
MIF scaled E-field

Grid 1 M4 35.03 dBV/m	Grid 2 M4 35.92 dBV/m	Grid 3 M4 35.9 dBV/m
Grid 4 M4 35.89 dBV/m	Grid 5 M4 36.42 dBV/m	Grid 6 M4 36.26 dBV/m
Grid 7 M4 36.89 dBV/m	Grid 8 M4 37.1 dBV/m	Grid 9 M4 36.68 dBV/m

Total = 37.10 dBV/m

E Category: M4

Location: 0.5, 25, 7.7 mm



0 dB = 71.65 V/m = 37.10 dBV/m

20_HAC RF_GSM1900_GSM Voice_Ch512_E

Communication System: UID 10021 - DAB, GSM-FDD (TDMA, GMSK); Frequency: 1850.2 MHz; Duty Cycle: 1:8.6896

Medium: Air Medium parameters used: $\sigma = 0$ S/m, $\epsilon_r = 1$; $\rho = 0$ kg/m³

Ambient Temperature : 23.4 °C

DASY5 Configuration:

- Probe: EF3DV3 - SN4053; ConvF(1, 1, 1); Calibrated: 2020.04.27;
- Sensor-Surface: (Fix Surface)
- Electronics: DAE4 Sn1356; Calibrated: 2020.05.19
- Phantom: HAC Test Arch; Type: SD HAC P01 BA;
- Measurement SW: DASY52, Version 52.8 (8); SEMCAD X Version 14.6.10 (7331)

Ch512/Hearing Aid Compatibility Test (101x101x1): Interpolated grid: dx=0.5000 mm, dy=0.5000 mm

Device Reference Point: 0, 0, -6.3 mm

Reference Value = 11.87 V/m; Power Drift = 0.05 dB

Applied MIF = 3.63 dB

RF audio interference level = 25.76 dBV/m

Emission category: M4

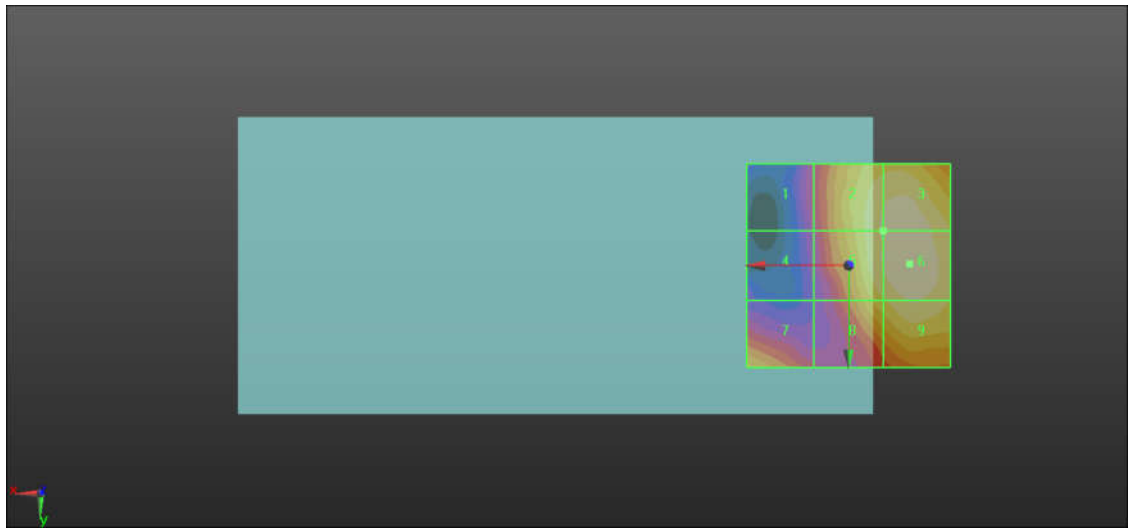
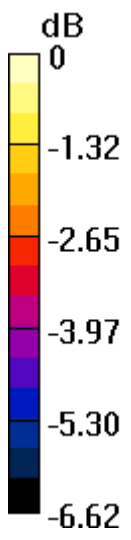
MIF scaled E-field

Grid 1 M4 22.4 dBV/m	Grid 2 M4 25.41 dBV/m	Grid 3 M4 25.64 dBV/m
Grid 4 M4 22.06 dBV/m	Grid 5 M4 25.41 dBV/m	Grid 6 M4 25.76 dBV/m
Grid 7 M4 24.16 dBV/m	Grid 8 M4 24.83 dBV/m	Grid 9 M4 25.36 dBV/m

Total = 25.76 dBV/m

E Category: M4

Location: -15, -0.5, 7.7 mm



0 dB = 19.41 V/m = 25.76 dBV/m

21_HAC RF_GSM1900_GSM Voice_Ch661_E

Communication System: UID 10021 - DAB, GSM-FDD (TDMA, GMSK); Frequency: 1880 MHz; Duty Cycle: 1:8.6896

Medium: Air Medium parameters used: $\sigma = 0$ S/m, $\epsilon_r = 1$; $\rho = 0$ kg/m³

Ambient Temperature : 23.4 °C

DASY5 Configuration:

- Probe: EF3DV3 - SN4053; ConvF(1, 1, 1); Calibrated: 2020.04.27;
- Sensor-Surface: (Fix Surface)
- Electronics: DAE4 Sn1356; Calibrated: 2020.05.19
- Phantom: HAC Test Arch; Type: SD HAC P01 BA;
- Measurement SW: DASY52, Version 52.8 (8); SEMCAD X Version 14.6.10 (7331)

Ch661/Hearing Aid Compatibility Test (101x101x1): Interpolated grid: dx=0.5000 mm, dy=0.5000 mm

Device Reference Point: 0, 0, -6.3 mm

Reference Value = 12.70 V/m; Power Drift = -0.08 dB

Applied MIF = 3.63 dB

RF audio interference level = 26.13 dBV/m

Emission category: M4

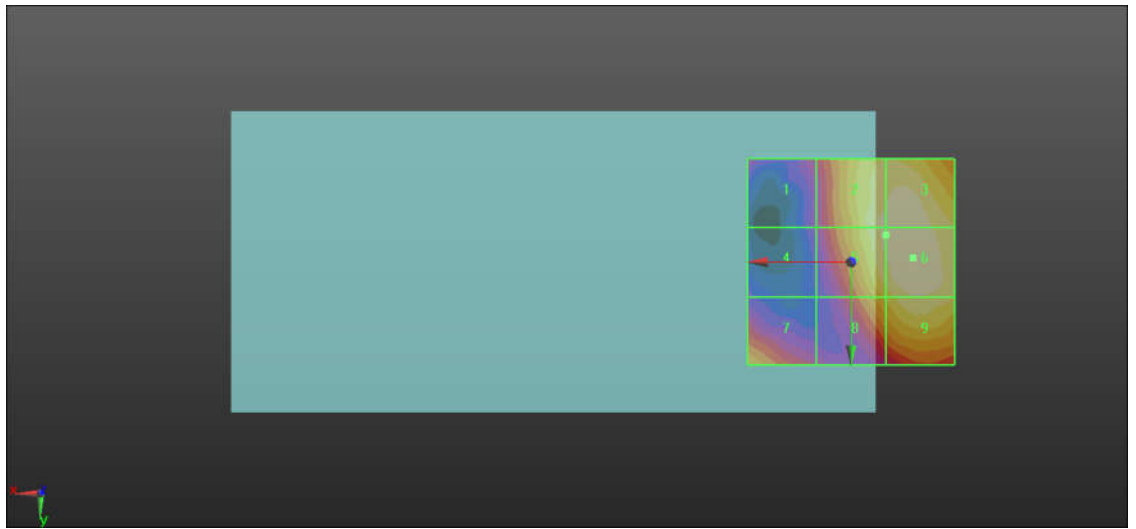
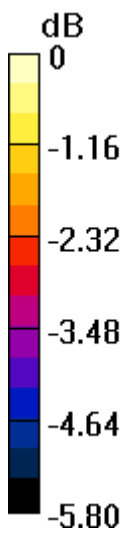
MIF scaled E-field

Grid 1 M4 23.14 dBV/m	Grid 2 M4 25.83 dBV/m	Grid 3 M4 26.06 dBV/m
Grid 4 M4 22.58 dBV/m	Grid 5 M4 25.86 dBV/m	Grid 6 M4 26.13 dBV/m
Grid 7 M4 24.61 dBV/m	Grid 8 M4 25.11 dBV/m	Grid 9 M4 25.74 dBV/m

Total = 26.13 dBV/m

E Category: M4

Location: -15, -1, 7.7 mm



0 dB = 20.26 V/m = 26.13 dBV/m

22_HAC RF_GSM1900_GSM Voice_Ch810_E

Communication System: UID 10021 - DAB, GSM-FDD (TDMA, GMSK); Frequency: 1909.8 MHz; Duty Cycle: 1:8.6896

Medium: Air Medium parameters used: $\sigma = 0$ S/m, $\epsilon_r = 1$; $\rho = 0$ kg/m³

Ambient Temperature : 23.4 °C

DASY5 Configuration:

- Probe: EF3DV3 - SN4053; ConvF(1, 1, 1); Calibrated: 2020.04.27;
- Sensor-Surface: (Fix Surface)
- Electronics: DAE4 Sn1356; Calibrated: 2020.05.19
- Phantom: HAC Test Arch; Type: SD HAC P01 BA;
- Measurement SW: DASY52, Version 52.8 (8); SEMCAD X Version 14.6.10 (7331)

Ch810/Hearing Aid Compatibility Test (101x101x1): Interpolated grid: dx=0.5000 mm, dy=0.5000 mm

Device Reference Point: 0, 0, -6.3 mm

Reference Value = 13.29 V/m; Power Drift = -0.01 dB

Applied MIF = 3.63 dB

RF audio interference level = 26.95 dBV/m

Emission category: M4

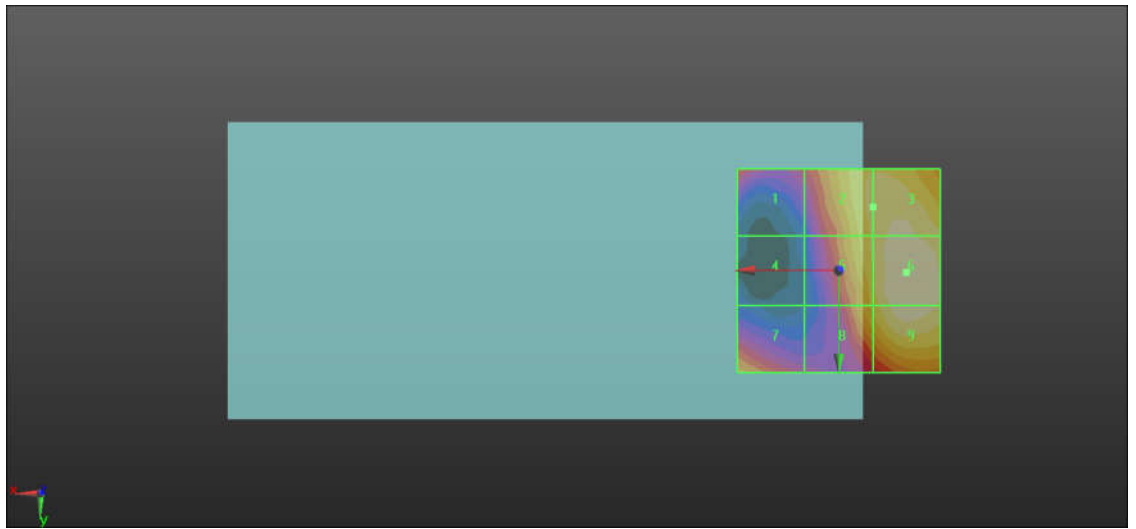
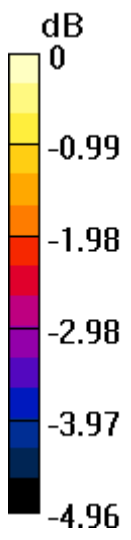
MIF scaled E-field

Grid 1 M4 25.03 dBV/m	Grid 2 M4 26.4 dBV/m	Grid 3 M4 26.76 dBV/m
Grid 4 M4 23.07 dBV/m	Grid 5 M4 26.39 dBV/m	Grid 6 M4 26.95 dBV/m
Grid 7 M4 25.5 dBV/m	Grid 8 M4 26.08 dBV/m	Grid 9 M4 26.87 dBV/m

Total = 26.95 dBV/m

E Category: M4

Location: -16.5, 0.5, 7.7 mm



0 dB = 22.25 V/m = 26.95 dBV/m

23_HAC RF_LTE Band 41_20M_QPSK_1RB_49offset_Ch39750_E

Communication System: UID 10172 - CAB, LTE-TDD (SC-FDMA, 1 RB, 20 MHz, QPSK);
 Frequency: 2506 MHz; Duty Cycle: 1:8.33681

Medium: Air Medium parameters used: $\sigma = 0$ S/m, $\epsilon_r = 1$; $\rho = 0$ kg/m³

Ambient Temperature : 23.4 °C

DASY5 Configuration:

- Probe: EF3DV3 - SN4053; ConvF(1, 1, 1); Calibrated: 2020.04.27;
- Sensor-Surface: (Fix Surface)
- Electronics: DAE4 Sn1356; Calibrated: 2020.05.19
- Phantom: HAC Test Arch; Type: SD HAC P01 BA;
- Measurement SW: DASY52, Version 52.8 (8); SEMCAD X Version 14.6.10 (7331)

Ch39750/Hearing Aid Compatibility Test (101x101x1): Interpolated grid: dx=0.5000 mm, dy=0.5000 mm

Device Reference Point: 0, 0, -6.3 mm

Reference Value = 7.566 V/m; Power Drift = 0.02 dB

Applied MIF = -1.62 dB

RF audio interference level = 22.30 dBV/m

Emission category: M4

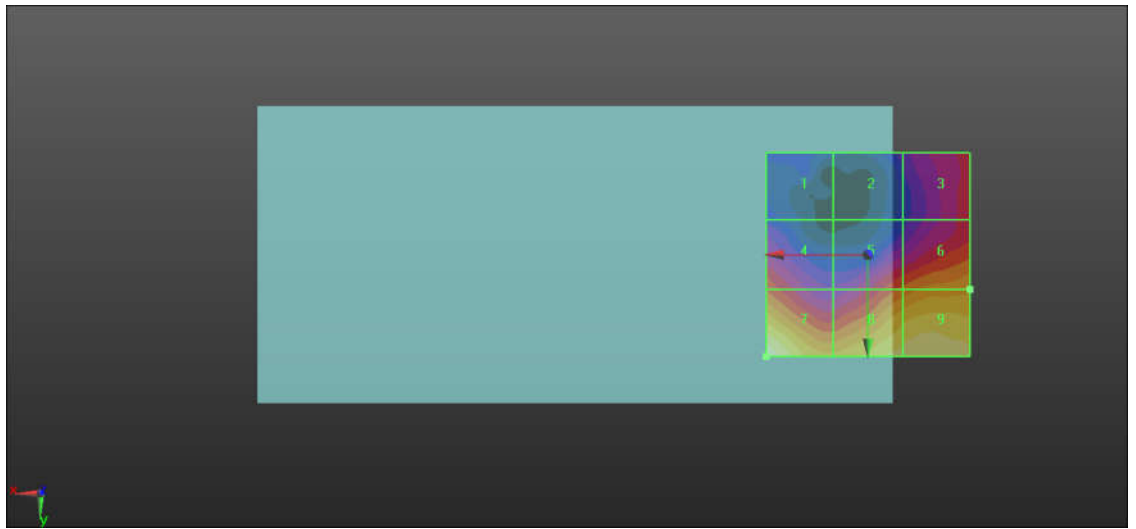
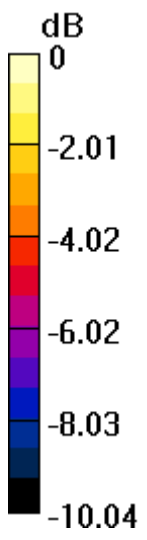
MIF scaled E-field

Grid 1 M4 15.01 dBV/m	Grid 2 M4 15.4 dBV/m	Grid 3 M4 17.45 dBV/m
Grid 4 M4 18.28 dBV/m	Grid 5 M4 18.5 dBV/m	Grid 6 M4 19.51 dBV/m
Grid 7 M4 22.3 dBV/m	Grid 8 M4 21.25 dBV/m	Grid 9 M4 21.53 dBV/m

Total = 22.30 dBV/m

E Category: M4

Location: 25, 25, 7.7 mm



0 dB = 13.03 V/m = 22.30 dBV/m

24_HAC RF_LTE Band 41_20M_QPSK_1RB_49offset_Ch40185_E

Communication System: UID 10172 - CAB, LTE-TDD (SC-FDMA, 1 RB, 20 MHz, QPSK);
 Frequency: 2549.5 MHz; Duty Cycle: 1:8.33681

Medium: Air Medium parameters used: $\sigma = 0$ S/m, $\epsilon_r = 1$; $\rho = 0$ kg/m³

Ambient Temperature : 23.4 °C

DASY5 Configuration:

- Probe: EF3DV3 - SN4053; ConvF(1, 1, 1); Calibrated: 2020.04.27;
- Sensor-Surface: (Fix Surface)
- Electronics: DAE4 Sn1356; Calibrated: 2020.05.19
- Phantom: HAC Test Arch; Type: SD HAC P01 BA;
- Measurement SW: DASY52, Version 52.8 (8); SEMCAD X Version 14.6.10 (7331)

Ch40185/Hearing Aid Compatibility Test (101x101x1): Interpolated grid: dx=0.5000 mm, dy=0.5000 mm

Device Reference Point: 0, 0, -6.3 mm

Reference Value = 11.89 V/m; Power Drift = 0.04 dB

Applied MIF = -1.62 dB

RF audio interference level = 21.48 dBV/m

Emission category: M4

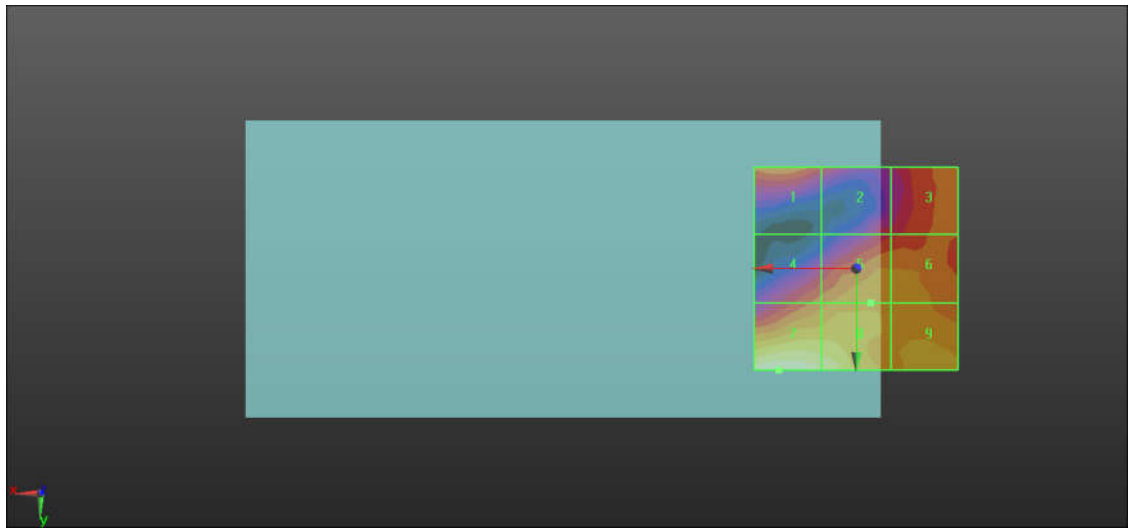
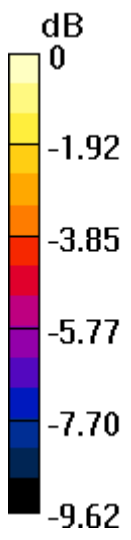
MIF scaled E-field

Grid 1 M4 18.26 dBV/m	Grid 2 M4 17.25 dBV/m	Grid 3 M4 18.12 dBV/m
Grid 4 M4 18.04 dBV/m	Grid 5 M4 18.82 dBV/m	Grid 6 M4 18.76 dBV/m
Grid 7 M4 21.48 dBV/m	Grid 8 M4 20.92 dBV/m	Grid 9 M4 19.36 dBV/m

Total = 21.48 dBV/m

E Category: M4

Location: 19, 25, 7.7 mm



0 dB = 11.85 V/m = 21.47 dBV/m

25_HAC RF_LTE Band 41_20M_QPSK_1RB_49offset_Ch40620_E

Communication System: UID 10172 - CAB, LTE-TDD (SC-FDMA, 1 RB, 20 MHz, QPSK);
 Frequency: 2593 MHz; Duty Cycle: 1:8.33681

Medium: Air Medium parameters used: $\sigma = 0 \text{ S/m}$, $\epsilon_r = 1$; $\rho = 0 \text{ kg/m}^3$

Ambient Temperature : 23.4 °C

DASY5 Configuration:

- Probe: EF3DV3 - SN4053; ConvF(1, 1, 1); Calibrated: 2020.04.27;
- Sensor-Surface: (Fix Surface)
- Electronics: DAE4 Sn1356; Calibrated: 2020.05.19
- Phantom: HAC Test Arch; Type: SD HAC P01 BA;
- Measurement SW: DASY52, Version 52.8 (8); SEMCAD X Version 14.6.10 (7331)

Ch40620/Hearing Aid Compatibility Test (101x101x1): Interpolated grid: dx=0.5000 mm, dy=0.5000 mm

Device Reference Point: 0, 0, -6.3 mm

Reference Value = 10.18 V/m; Power Drift = -0.10 dB

Applied MIF = -1.62 dB

RF audio interference level = 20.89 dBV/m

Emission category: M4

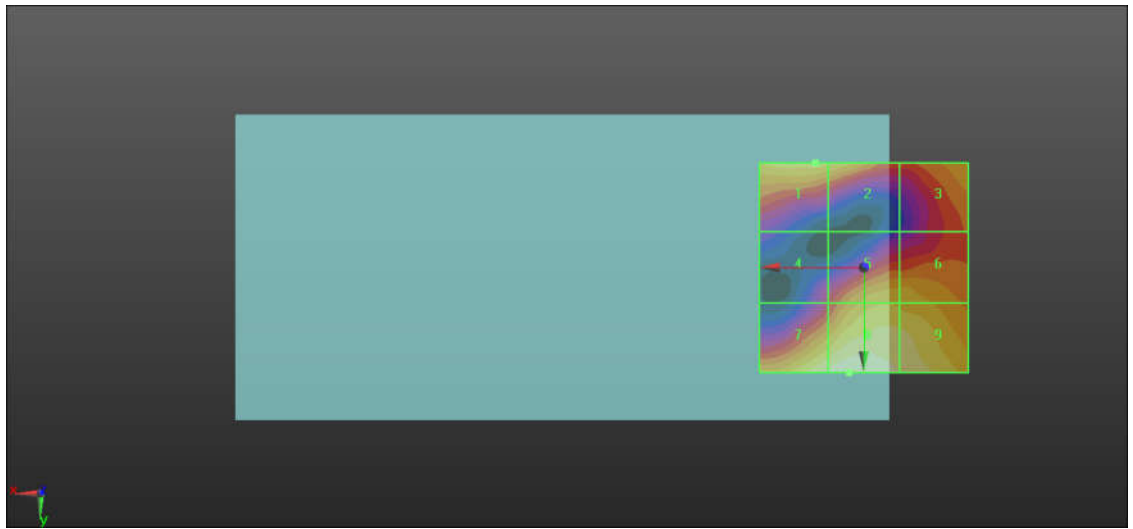
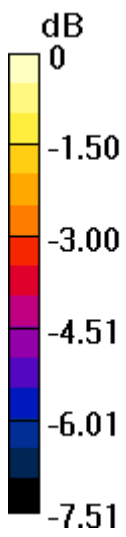
MIF scaled E-field

Grid 1 M4 19.71 dBV/m	Grid 2 M4 19.61 dBV/m	Grid 3 M4 18.76 dBV/m
Grid 4 M4 17.15 dBV/m	Grid 5 M4 19.4 dBV/m	Grid 6 M4 19.29 dBV/m
Grid 7 M4 20.58 dBV/m	Grid 8 M4 20.89 dBV/m	Grid 9 M4 20.32 dBV/m

Total = 20.89 dBV/m

E Category: M4

Location: 3.5, 25, 7.7 mm



0 dB = 11.08 V/m = 20.89 dBV/m

26_HAC RF_LTE Band 41_20M_QPSK_1RB_49offset_Ch41055_E

Communication System: UID 10172 - CAB, LTE-TDD (SC-FDMA, 1 RB, 20 MHz, QPSK);
 Frequency: 2636.5 MHz; Duty Cycle: 1:8.33681

Medium: Air Medium parameters used: $\sigma = 0$ S/m, $\epsilon_r = 1$; $\rho = 0$ kg/m³

Ambient Temperature : 23.4 °C

DASY5 Configuration:

- Probe: EF3DV3 - SN4053; ConvF(1, 1, 1); Calibrated: 2020.04.27;
- Sensor-Surface: (Fix Surface)
- Electronics: DAE4 Sn1356; Calibrated: 2020.05.19
- Phantom: HAC Test Arch; Type: SD HAC P01 BA;
- Measurement SW: DASY52, Version 52.8 (8); SEMCAD X Version 14.6.10 (7331)

Ch41055/Hearing Aid Compatibility Test (101x101x1): Interpolated grid: dx=0.5000 mm, dy=0.5000 mm

Device Reference Point: 0, 0, -6.3 mm

Reference Value = 8.149 V/m; Power Drift = 0.02 dB

Applied MIF = -1.62 dB

RF audio interference level = 21.19 dBV/m

Emission category: M4

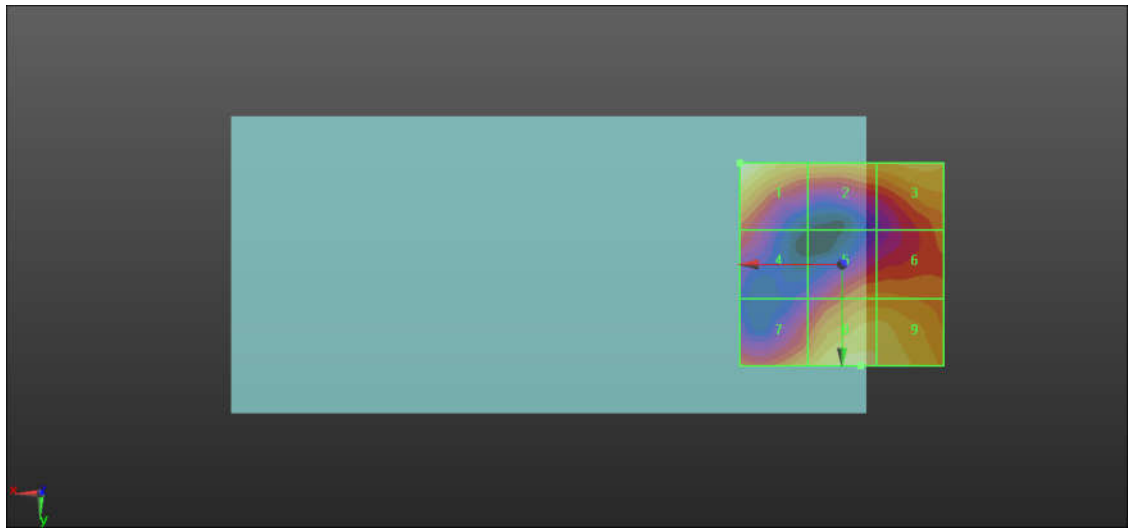
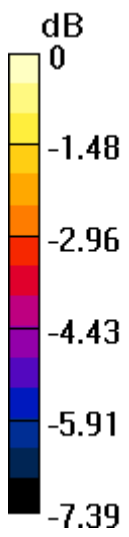
MIF scaled E-field

Grid 1 M4 21.19 dBV/m	Grid 2 M4 19.66 dBV/m	Grid 3 M4 19.92 dBV/m
Grid 4 M4 18.07 dBV/m	Grid 5 M4 18.95 dBV/m	Grid 6 M4 18.95 dBV/m
Grid 7 M4 19.58 dBV/m	Grid 8 M4 20.58 dBV/m	Grid 9 M4 20.27 dBV/m

Total = 21.19 dBV/m

E Category: M4

Location: 25, -25, 7.7 mm



0 dB = 11.47 V/m = 21.19 dBV/m

27_HAC RF_LTE Band 41_20M_QPSK_1RB_49offset_Ch41490_E

Communication System: UID 10172 - CAB, LTE-TDD (SC-FDMA, 1 RB, 20 MHz, QPSK);
 Frequency: 2680 MHz; Duty Cycle: 1:8.33681

Medium: Air Medium parameters used: $\sigma = 0$ S/m, $\epsilon_r = 1$; $\rho = 0$ kg/m³

Ambient Temperature : 23.4 °C

DASY5 Configuration:

- Probe: EF3DV3 - SN4053; ConvF(1, 1, 1); Calibrated: 2020.04.27;
- Sensor-Surface: (Fix Surface)
- Electronics: DAE4 Sn1356; Calibrated: 2020.05.19
- Phantom: HAC Test Arch; Type: SD HAC P01 BA;
- Measurement SW: DASY52, Version 52.8 (8); SEMCAD X Version 14.6.10 (7331)

Ch41490/Hearing Aid Compatibility Test (101x101x1): Interpolated grid: dx=0.5000 mm, dy=0.5000 mm

Device Reference Point: 0, 0, -6.3 mm

Reference Value = 7.709 V/m; Power Drift = -0.12 dB

Applied MIF = -1.62 dB

RF audio interference level = 20.93 dBV/m

Emission category: M4

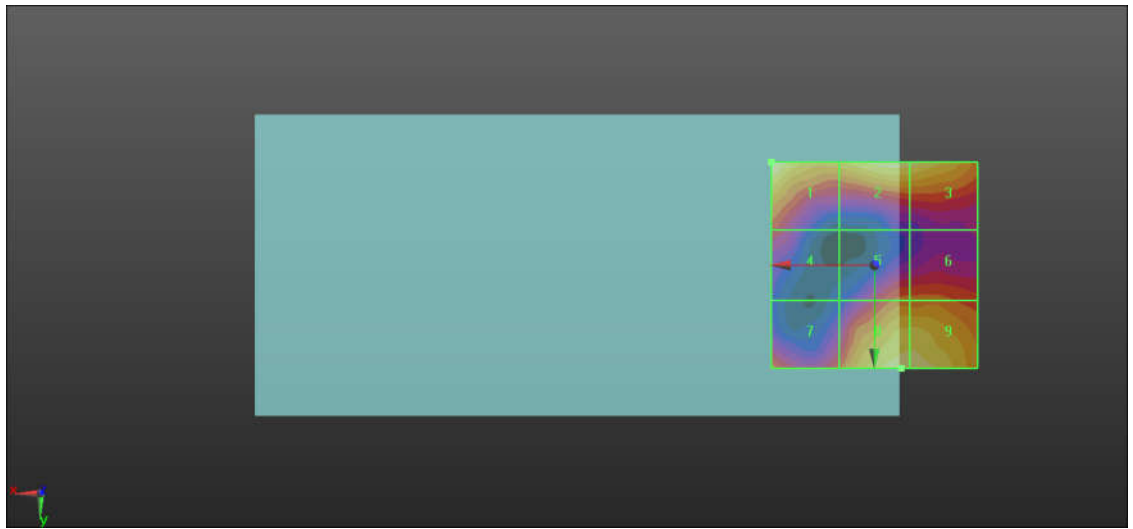
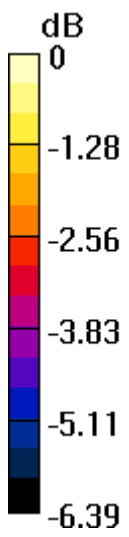
MIF scaled E-field

Grid 1 M4 20.93 dBV/m	Grid 2 M4 20.34 dBV/m	Grid 3 M4 20.32 dBV/m
Grid 4 M4 18 dBV/m	Grid 5 M4 18.58 dBV/m	Grid 6 M4 18.63 dBV/m
Grid 7 M4 18.85 dBV/m	Grid 8 M4 20.31 dBV/m	Grid 9 M4 20.28 dBV/m

Total = 20.93 dBV/m

E Category: M4

Location: 25, -25, 7.7 mm



0 dB = 11.12 V/m = 20.92 dBV/m

28_HAC RF_LTE Band 41_20M_QPSK_1RB_49offset_Ch39750_E

Communication System: UID 10172 - CAB, LTE-TDD (SC-FDMA, 1 RB, 20 MHz, QPSK);
 Frequency: 2506 MHz; Duty Cycle: 1:8.33681

Medium: Air Medium parameters used: $\sigma = 0$ S/m, $\epsilon_r = 1$; $\rho = 0$ kg/m³

Ambient Temperature : 23.4 °C

DASY5 Configuration:

- Probe: EF3DV3 - SN4053; ConvF(1, 1, 1); Calibrated: 2020.04.27;
- Sensor-Surface: (Fix Surface)
- Electronics: DAE4 Sn1356; Calibrated: 2020.05.19
- Phantom: HAC Test Arch; Type: SD HAC P01 BA;
- Measurement SW: DASY52, Version 52.8 (8); SEMCAD X Version 14.6.10 (7331)

Ch39750/Hearing Aid Compatibility Test (101x101x1): Interpolated grid: dx=0.5000 mm, dy=0.5000 mm

Device Reference Point: 0, 0, -6.3 mm

Reference Value = 7.524 V/m; Power Drift = -0.15 dB

Applied MIF = -1.62 dB

RF audio interference level = 23.12 dBV/m

Emission category: M4

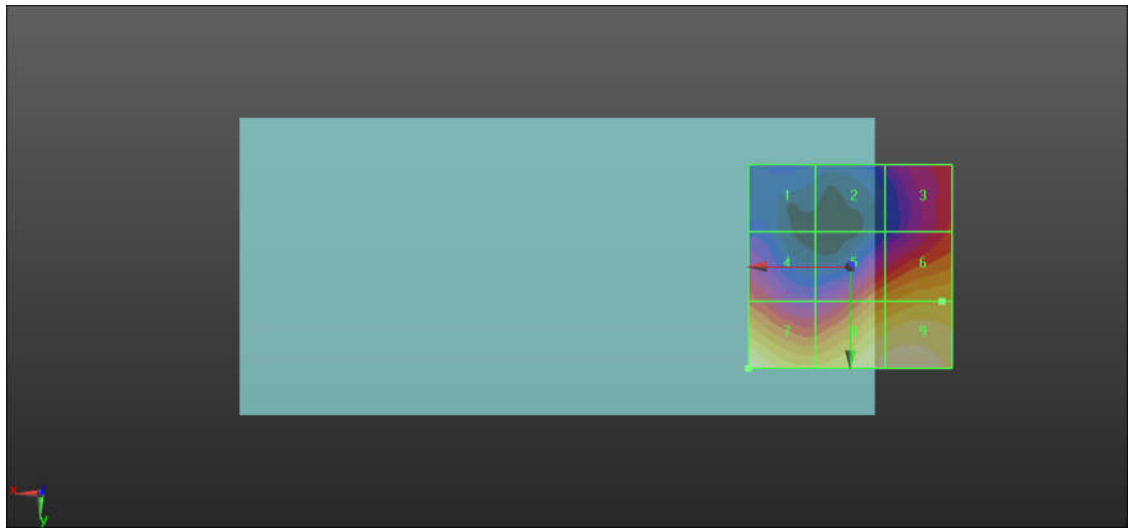
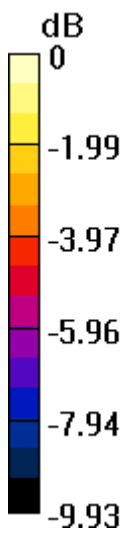
MIF scaled E-field

Grid 1 M4 15.65 dBV/m	Grid 2 M4 16.48 dBV/m	Grid 3 M4 18.79 dBV/m
Grid 4 M4 19.04 dBV/m	Grid 5 M4 20.15 dBV/m	Grid 6 M4 21.08 dBV/m
Grid 7 M4 23.12 dBV/m	Grid 8 M4 22.8 dBV/m	Grid 9 M4 22.93 dBV/m

Total = 23.12 dBV/m

E Category: M4

Location: 25, 25, 7.7 mm



0 dB = 14.33 V/m = 23.12 dBV/m

29_HAC RF_LTE Band 41_20M_QPSK_1RB_49offset_Ch40185_E

Communication System: UID 10172 - CAB, LTE-TDD (SC-FDMA, 1 RB, 20 MHz, QPSK);
 Frequency: 2549.5 MHz; Duty Cycle: 1:8.33681

Medium: Air Medium parameters used: $\sigma = 0$ S/m, $\epsilon_r = 1$; $\rho = 0$ kg/m³

Ambient Temperature : 23.4 °C

DASY5 Configuration:

- Probe: EF3DV3 - SN4053; ConvF(1, 1, 1); Calibrated: 2020.04.27;
- Sensor-Surface: (Fix Surface)
- Electronics: DAE4 Sn1356; Calibrated: 2020.05.19
- Phantom: HAC Test Arch; Type: SD HAC P01 BA;
- Measurement SW: DASY52, Version 52.8 (8); SEMCAD X Version 14.6.10 (7331)

Ch40185/Hearing Aid Compatibility Test (101x101x1): Interpolated grid: dx=0.5000 mm, dy=0.5000 mm

Device Reference Point: 0, 0, -6.3 mm

Reference Value = 12.93 V/m; Power Drift = -0.04 dB

Applied MIF = -1.62 dB

RF audio interference level = 22.46 dBV/m

Emission category: M4

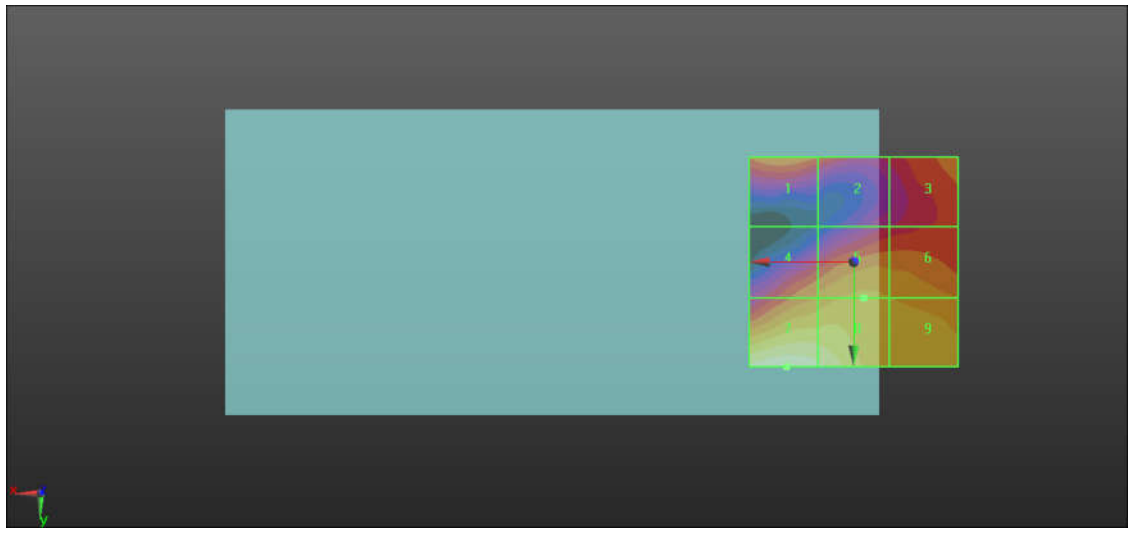
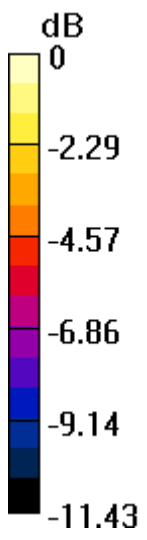
MIF scaled E-field

Grid 1 M4 18.62 dBV/m	Grid 2 M4 18.04 dBV/m	Grid 3 M4 18.06 dBV/m
Grid 4 M4 18.85 dBV/m	Grid 5 M4 19.57 dBV/m	Grid 6 M4 19.45 dBV/m
Grid 7 M4 22.46 dBV/m	Grid 8 M4 21.97 dBV/m	Grid 9 M4 20.15 dBV/m

Total = 22.46 dBV/m

E Category: M4

Location: 16, 25, 7.7 mm



0 dB = 13.28 V/m = 22.46 dBV/m

30_HAC RF_LTE Band 41_20M_QPSK_1RB_49offset_Ch40620_E

Communication System: UID 10172 - CAB, LTE-TDD (SC-FDMA, 1 RB, 20 MHz, QPSK);
 Frequency: 2593 MHz; Duty Cycle: 1:8.33681

Medium: Air Medium parameters used: $\sigma = 0$ S/m, $\epsilon_r = 1$; $\rho = 0$ kg/m³

Ambient Temperature : 23.4 °C

DASY5 Configuration:

- Probe: EF3DV3 - SN4053; ConvF(1, 1, 1); Calibrated: 2020.04.27;
- Sensor-Surface: (Fix Surface)
- Electronics: DAE4 Sn1356; Calibrated: 2020.05.19
- Phantom: HAC Test Arch; Type: SD HAC P01 BA;
- Measurement SW: DASY52, Version 52.8 (8); SEMCAD X Version 14.6.10 (7331)

Ch40620/Hearing Aid Compatibility Test (101x101x1): Interpolated grid: dx=0.5000 mm, dy=0.5000 mm

Device Reference Point: 0, 0, -6.3 mm

Reference Value = 10.98 V/m; Power Drift = -0.09 dB

Applied MIF = -1.62 dB

RF audio interference level = 22.00 dBV/m

Emission category: M4

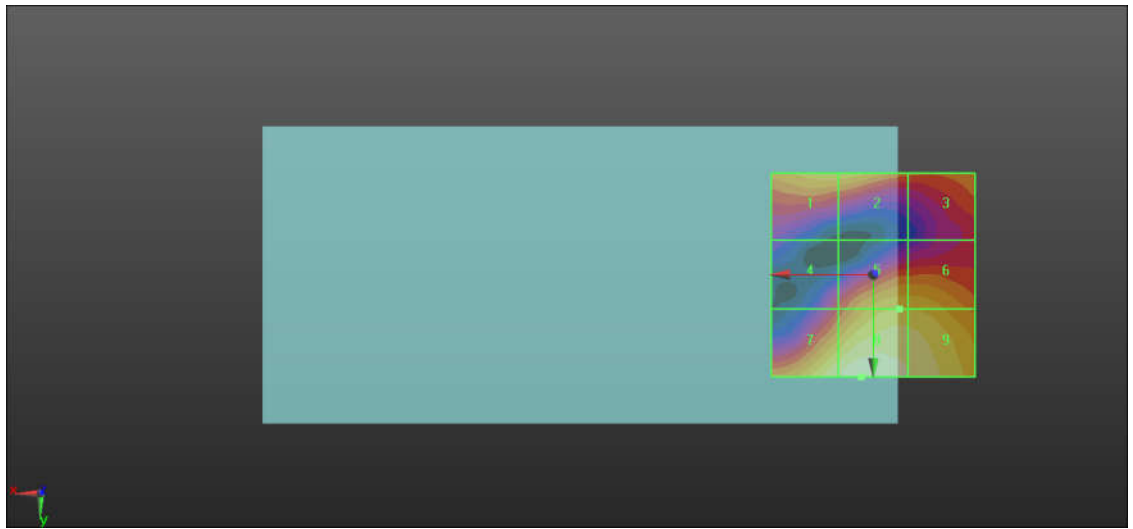
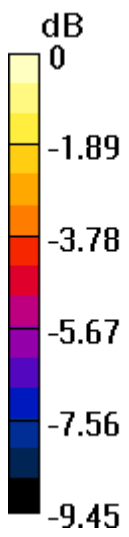
MIF scaled E-field

Grid 1 M4 20.06 dBV/m	Grid 2 M4 20.06 dBV/m	Grid 3 M4 18.64 dBV/m
Grid 4 M4 17.71 dBV/m	Grid 5 M4 20.2 dBV/m	Grid 6 M4 20.15 dBV/m
Grid 7 M4 21.52 dBV/m	Grid 8 M4 22 dBV/m	Grid 9 M4 21.38 dBV/m

Total = 22.00 dBV/m

E Category: M4

Location: 3, 25, 7.7 mm



0 dB = 12.59 V/m = 22.00 dBV/m

31_HAC RF_LTE Band 41_20M_QPSK_1RB_49offset_Ch41055_E

Communication System: UID 10172 - CAB, LTE-TDD (SC-FDMA, 1 RB, 20 MHz, QPSK);
 Frequency: 2636.5 MHz; Duty Cycle: 1:8.33681

Medium: Air Medium parameters used: $\sigma = 0$ S/m, $\epsilon_r = 1$; $\rho = 0$ kg/m³

Ambient Temperature : 23.4 °C

DASY5 Configuration:

- Probe: EF3DV3 - SN4053; ConvF(1, 1, 1); Calibrated: 2020.04.27;
- Sensor-Surface: (Fix Surface)
- Electronics: DAE4 Sn1356; Calibrated: 2020.05.19
- Phantom: HAC Test Arch; Type: SD HAC P01 BA;
- Measurement SW: DASY52, Version 52.8 (8); SEMCAD X Version 14.6.10 (7331)

Ch41055/Hearing Aid Compatibility Test (101x101x1): Interpolated grid: dx=0.5000 mm, dy=0.5000 mm

Device Reference Point: 0, 0, -6.3 mm

Reference Value = 9.210 V/m; Power Drift = -0.10 dB

Applied MIF = -1.62 dB

RF audio interference level = 21.97 dBV/m

Emission category: M4

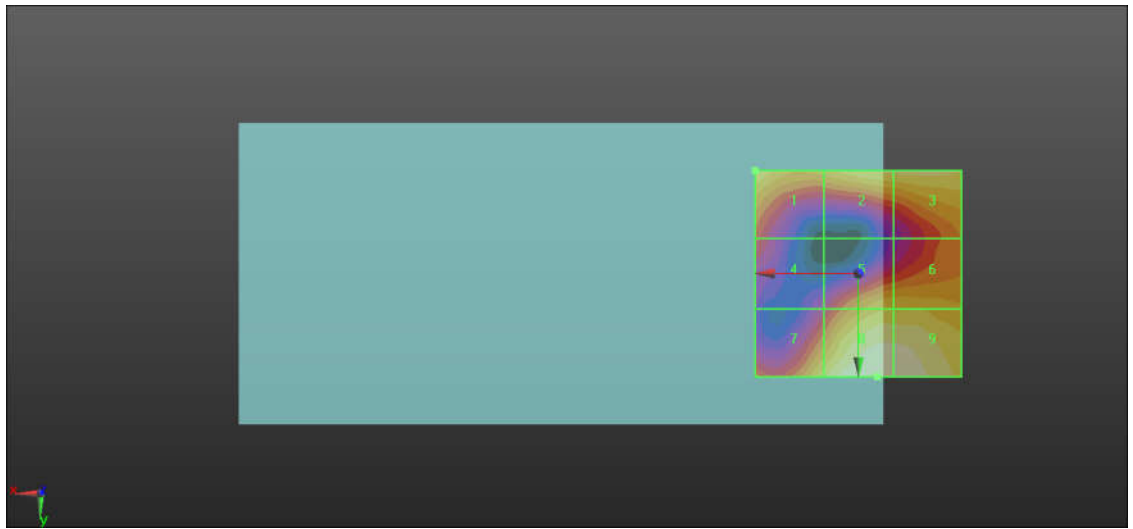
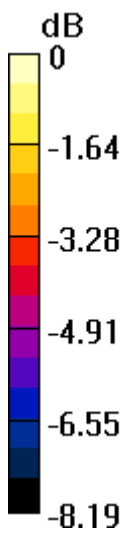
MIF scaled E-field

Grid 1 M4 21.23 dBV/m	Grid 2 M4 21.15 dBV/m	Grid 3 M4 21.19 dBV/m
Grid 4 M4 18.37 dBV/m	Grid 5 M4 20.3 dBV/m	Grid 6 M4 20.3 dBV/m
Grid 7 M4 20.78 dBV/m	Grid 8 M4 21.97 dBV/m	Grid 9 M4 21.84 dBV/m

Total = 21.97 dBV/m

E Category: M4

Location: -4.5, 25, 7.7 mm



0 dB = 12.54 V/m = 21.97 dBV/m

32_HAC RF_LTE Band 41_20M_QPSK_1RB_49offset_Ch41490_E

Communication System: UID 10172 - CAB, LTE-TDD (SC-FDMA, 1 RB, 20 MHz, QPSK);
 Frequency: 2680 MHz; Duty Cycle: 1:8.33681

Medium: Air Medium parameters used: $\sigma = 0$ S/m, $\epsilon_r = 1$; $\rho = 0$ kg/m³

Ambient Temperature : 23.4 °C

DASY5 Configuration:

- Probe: EF3DV3 - SN4053; ConvF(1, 1, 1); Calibrated: 2020.04.27;
- Sensor-Surface: (Fix Surface)
- Electronics: DAE4 Sn1356; Calibrated: 2020.05.19
- Phantom: HAC Test Arch; Type: SD HAC P01 BA;
- Measurement SW: DASY52, Version 52.8 (8); SEMCAD X Version 14.6.10 (7331)

Ch41490/Hearing Aid Compatibility Test (101x101x1): Interpolated grid: dx=0.5000 mm, dy=0.5000 mm

Device Reference Point: 0, 0, -6.3 mm

Reference Value = 8.316 V/m; Power Drift = -0.11 dB

Applied MIF = -1.62 dB

RF audio interference level = 21.78 dBV/m

Emission category: M4

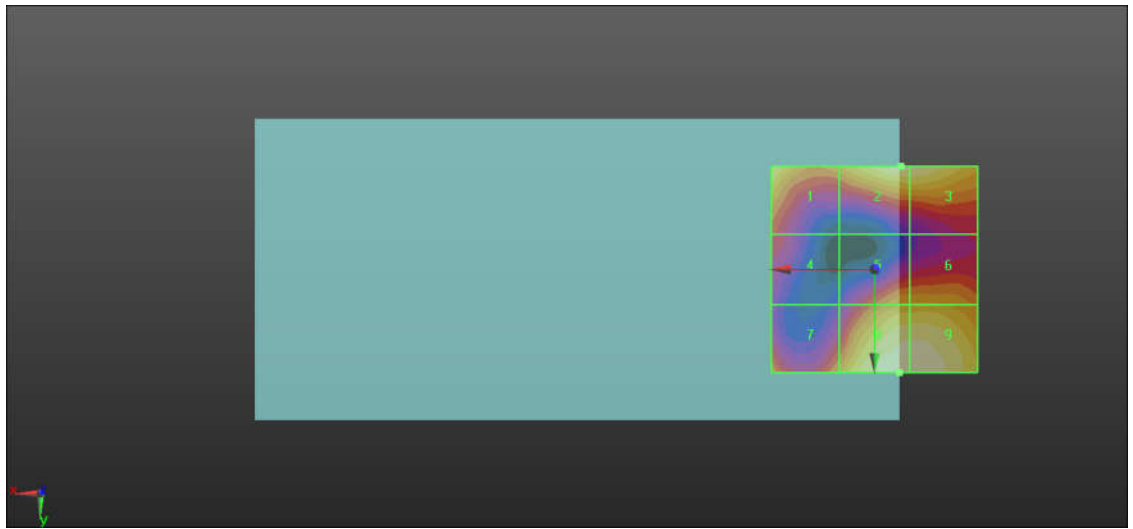
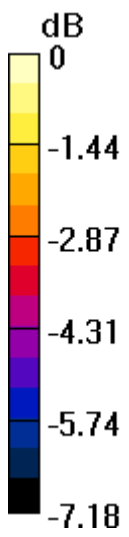
MIF scaled E-field

Grid 1 M4 21.18 dBV/m	Grid 2 M4 21.53 dBV/m	Grid 3 M4 21.48 dBV/m
Grid 4 M4 18.61 dBV/m	Grid 5 M4 19.94 dBV/m	Grid 6 M4 19.99 dBV/m
Grid 7 M4 19.65 dBV/m	Grid 8 M4 21.78 dBV/m	Grid 9 M4 21.72 dBV/m

Total = 21.78 dBV/m

E Category: M4

Location: -6, 25, 7.7 mm



0 dB = 12.27 V/m = 21.78 dBV/m



Appendix C. DASY Calibration Certificate

The DASY calibration certificates are shown as follows.



Accredited by the Swiss Accreditation Service (SAS)
The Swiss Accreditation Service is one of the signatories to the EA
Multilateral Agreement for the recognition of calibration certificates

Accreditation No.: **SCS 0108**

Client **Sporton**

Certificate No: **CD835V3-1184_May18**

CALIBRATION CERTIFICATE

Object **CD835V3 - SN: 1184**

Calibration procedure(s) **QA CAL-20.v6
Calibration procedure for dipoles in air**

Calibration date: **May 25, 2018**

This calibration certificate documents the traceability to national standards, which realize the physical units of measurements (SI).
The measurements and the uncertainties with confidence probability are given on the following pages and are part of the certificate.

All calibrations have been conducted in the closed laboratory facility: environment temperature (22 ± 3)°C and humidity < 70%.

Calibration Equipment used (M&TE critical for calibration)

Primary Standards	ID #	Cal Date (Certificate No.)	Scheduled Calibration
Power meter NRP	SN: 104778	04-Apr-18 (No. 217-02672/02673)	Apr-19
Power sensor NRP-Z91	SN: 103244	04-Apr-18 (No. 217-02672)	Apr-19
Power sensor NRP-Z91	SN: 103245	04-Apr-18 (No. 217-02673)	Apr-19
Reference 20 dB Attenuator	SN: 5058 (20k)	04-Apr-18 (No. 217-02682)	Apr-19
Type-N mismatch combination	SN: 5047.2 / 06327	04-Apr-18 (No. 217-02683)	Apr-19
Probe EF3DV3	SN: 4013	05-Mar-18 (No. EF3-4013_Mar18)	Mar-19
DAE4	SN: 781	17-Jan-18 (No. DAE4-781_Jan18)	Jan-19

Secondary Standards	ID #	Check Date (in house)	Scheduled Check
Power meter Agilent 4419B	SN: GB42420191	09-Oct-09 (in house check Oct-17)	In house check: Oct-20
Power sensor HP E4412A	SN: US38485102	05-Jan-10 (in house check Oct-17)	In house check: Oct-20
Power sensor HP 8482A	SN: US37295597	09-Oct-09 (in house check Oct-17)	In house check: Oct-20
RF generator R&S SMT-06	SN: 832283/011	27-Aug-12 (in house check Oct-17)	In house check: Oct-20
Network Analyzer HP 8753E	SN: US37390585	18-Oct-01 (in house check Oct-17)	In house check: Oct-18

	Name	Function	Signature
Calibrated by:	Leif Klysnar	Laboratory Technician	
Approved by:	Katja Pokovic	Technical Manager	

Issued: May 28, 2018

This calibration certificate shall not be reproduced except in full without written approval of the laboratory.



Accredited by the Swiss Accreditation Service (SAS)

The Swiss Accreditation Service is one of the signatories to the EA
Multilateral Agreement for the recognition of calibration certificates

Accreditation No.: **SCS 0108**

References

- [1] ANSI-C63.19-2011
American National Standard, Methods of Measurement of Compatibility between Wireless Communications
Devices and Hearing Aids.

Methods Applied and Interpretation of Parameters:

- *Coordinate System:* y-axis is in the direction of the dipole arms. z-axis is from the basis of the antenna (mounted on the table) towards its feed point between the two dipole arms. x-axis is normal to the other axes. In coincidence with the standards [1], the measurement planes (probe sensor center) are selected to be at a distance of 15 mm above the top metal edge of the dipole arms.
- *Measurement Conditions:* Further details are available from the hardcopies at the end of the certificate. All figures stated in the certificate are valid at the frequency indicated. The forward power to the dipole connector is set with a calibrated power meter connected and monitored with an auxiliary power meter connected to a directional coupler. While the dipole under test is connected, the forward power is adjusted to the same level.
- *Antenna Positioning:* The dipole is mounted on a HAC Test Arch phantom using the matching dipole positioner with the arms horizontal and the feeding cable coming from the floor. The measurements are performed in a shielded room with absorbers around the setup to reduce the reflections. It is verified before the mounting of the dipole under the Test Arch phantom, that its arms are perfectly in a line. It is installed on the HAC dipole positioner with its arms parallel below the dielectric reference wire and able to move elastically in vertical direction without changing its relative position to the top center of the Test Arch phantom. The vertical distance to the probe is adjusted after dipole mounting with a DASY5 Surface Check job. Before the measurement, the distance between phantom surface and probe tip is verified. The proper measurement distance is selected by choosing the matching section of the HAC Test Arch phantom with the proper device reference point (upper surface of the dipole) and the matching grid reference point (tip of the probe) considering the probe sensor offset. The vertical distance to the probe is essential for the accuracy.
- *Feed Point Impedance and Return Loss:* These parameters are measured using a HP 8753E Vector Network Analyzer. The impedance is specified at the SMA connector of the dipole. The influence of reflections was eliminated by applying the averaging function while moving the dipole in the air, at least 70cm away from any obstacles.
- *E-field distribution:* E field is measured in the x-y-plane with an isotropic ER3D-field probe with 100 mW forward power to the antenna feed point. In accordance with [1], the scan area is 20mm wide, its length exceeds the dipole arm length (180 or 90mm). The sensor center is 15 mm (in z) above the metal top of the dipole arms. Two 3D maxima are available near the end of the dipole arms. Assuming the dipole arms are perfectly in one line, the average of these two maxima (in subgrid 2 and subgrid 8) is determined to compensate for any non-parallelity to the measurement plane as well as the sensor displacement. The E-field value stated as calibration value represents the maximum of the interpolated 3D-E-field, in the plane above the dipole surface.

The reported uncertainty of measurement is stated as the standard uncertainty of measurement multiplied by the coverage factor $k=2$, which for a normal distribution corresponds to a coverage probability of approximately 95%.

Measurement Conditions

DASY system configuration, as far as not given on page 1.

DASY Version	DASY5	V52.10.1
Phantom	HAC Test Arch	
Distance Dipole Top - Probe Center	15 mm	
Scan resolution	dx, dy = 5 mm	
Frequency	835 MHz \pm 1 MHz	
Input power drift	< 0.05 dB	

Maximum Field values at 835 MHz

E-field 15 mm above dipole surface	condition	Interpolated maximum
Maximum measured above high end	100 mW input power	111.2 V/m = 40.92 dBV/m
Maximum measured above low end	100 mW input power	109.6 V/m = 40.80 dBV/m
Averaged maximum above arm	100 mW input power	110.4 V/m \pm 12.8 % (k=2)

Appendix (Additional assessments outside the scope of SCS 0108)

Antenna Parameters

Frequency	Return Loss	Impedance
800 MHz	16.7 dB	39.6 Ω - 8.1 j Ω
835 MHz	24.3 dB	51.3 Ω + 6.0 j Ω
880 MHz	17.7 dB	58.9 Ω - 11.1 j Ω
900 MHz	17.8 dB	51.3 Ω - 13.1 j Ω
945 MHz	23.6 dB	47.3 Ω + 5.8 j Ω

3.2 Antenna Design and Handling

The calibration dipole has a symmetric geometry with a built-in two stub matching network, which leads to the enhanced bandwidth.

The dipole is built of standard semirigid coaxial cable. The internal matching line is open ended. The antenna is therefore open for DC signals.

Do not apply force to dipole arms, as they are liable to bend. The soldered connections near the feedpoint may be damaged. After excessive mechanical stress or overheating, check the impedance characteristics to ensure that the internal matching network is not affected.

After long term use with 40W radiated power, only a slight warming of the dipole near the feedpoint can be measured.

Impedance Measurement Plot

