

## #27\_WLAN2.4GHz\_802.11b 1Mbps\_Back\_10mm\_Ch6

Communication System: 802.11b; Frequency: 2437 MHz; Duty Cycle: 1:1

Medium: MSL\_2450\_170809 Medium parameters used:  $f = 2437$  MHz;  $\sigma = 1.953$  S/m;  $\epsilon_r = 54.092$ ;  $\rho = 1000$  kg/m<sup>3</sup>

Ambient Temperature : 23.6 °C ; Liquid Temperature : 22.6 °C

DASY5 Configuration:

- Probe: EX3DV4 - SN3925; ConvF(7.94, 7.94, 7.94); Calibrated: 2017/5/24;
- Sensor-Surface: 1.4mm (Mechanical Surface Detection)
- Electronics: DAE3 Sn495; Calibrated: 2017/5/22
- Phantom: SAM\_Left; Type: QD000P40CD; Serial: TP:1815
- Measurement SW: DASY52, Version 52.8 (8); SEMCAD X Version 14.6.10 (7373)

**Area Scan (81x71x1):** Interpolated grid: dx=1.200 mm, dy=1.200 mm

Maximum value of SAR (interpolated) = 0.345 W/kg

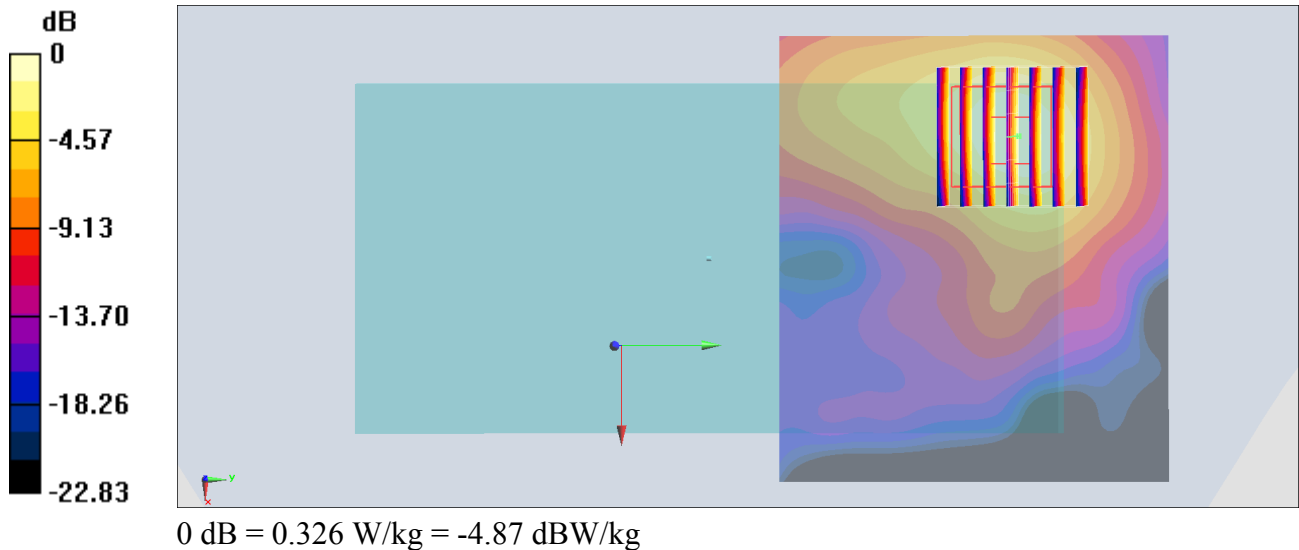
**Zoom Scan (7x7x7)/Cube 0:** Measurement grid: dx=5mm, dy=5mm, dz=5mm

Reference Value = 8.482 V/m; Power Drift = 0.10 dB

Peak SAR (extrapolated) = 0.403 W/kg

**SAR(1 g) = 0.214 W/kg; SAR(10 g) = 0.106 W/kg**

Maximum value of SAR (measured) = 0.326 W/kg



## #28\_WLAN5GHz\_802.11a\_6Mbps\_Back\_10mm\_Ch44

Communication System: 802.11a; Frequency: 5220 MHz; Duty Cycle: 1:1.029

Medium: MSL\_5G\_170811 Medium parameters used:  $f = 5220$  MHz;  $\sigma = 5.365$  S/m;  $\epsilon_r = 47.13$ ;  $\rho = 1000$  kg/m<sup>3</sup>

Ambient Temperature : 23.3 °C ; Liquid Temperature : 22.3 °C

DASY5 Configuration:

- Probe: EX3DV4 - SN3925; ConvF(4.59, 4.59, 4.59); Calibrated: 2017/5/24;
- Sensor-Surface: 1.4mm (Mechanical Surface Detection)
- Electronics: DAE3 Sn495; Calibrated: 2017/5/22
- Phantom: SAM\_Left; Type: QD000P40CD; Serial: TP:1815
- Measurement SW: DASY52, Version 52.8 (8); SEMCAD X Version 14.6.10 (7373)

**Area Scan (101x91x1):** Interpolated grid: dx=1.000 mm, dy=1.000 mm

Maximum value of SAR (interpolated) = 1.29 W/kg

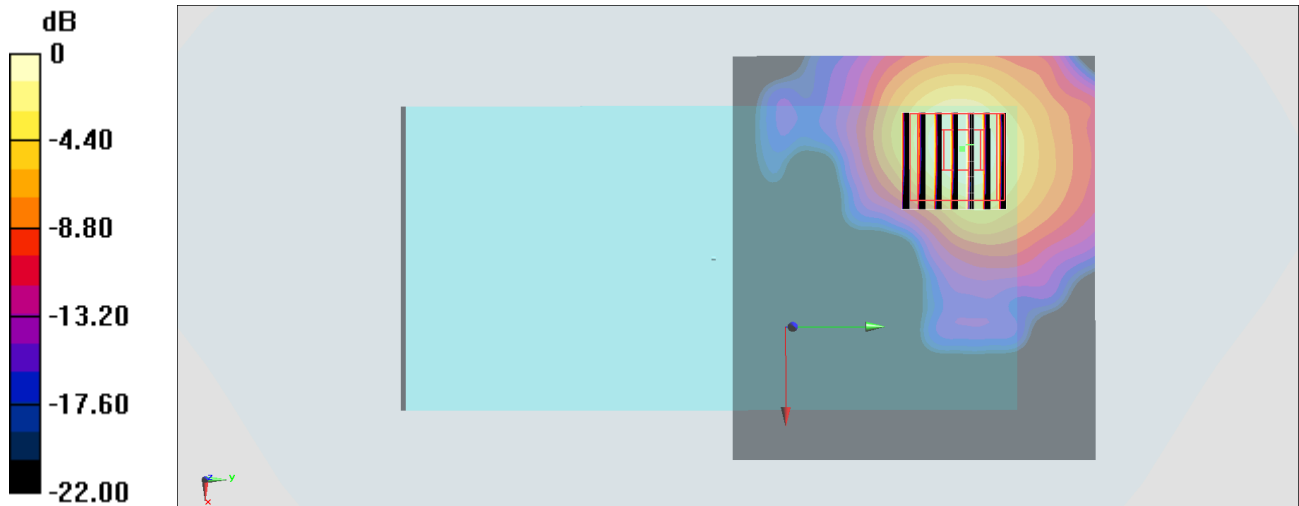
**Zoom Scan (7x7x7)/Cube 0:** Measurement grid: dx=4mm, dy=4mm, dz=1.4mm

Reference Value = 10.82 V/m; Power Drift = 0.15 dB

Peak SAR (extrapolated) = 1.73 W/kg

**SAR(1 g) = 0.531 W/kg; SAR(10 g) = 0.177 W/kg**

Maximum value of SAR (measured) = 1.14 W/kg



0 dB = 1.14 W/kg = 0.57 dBW/kg

**#29\_WLAN5GHz\_802.11a 6Mbps\_Top Side\_10mm\_Ch157**

Communication System: 802.11a; Frequency: 5785 MHz; Duty Cycle: 1:1.029

Medium: MSL\_5G\_170811 Medium parameters used:  $f = 5785$  MHz;  $\sigma = 6.107$  S/m;  $\epsilon_r = 46.179$ ;  $\rho = 1000$  kg/m<sup>3</sup>

Ambient Temperature : 23.3 °C ; Liquid Temperature : 22.3 °C

DASY5 Configuration:

- Probe: EX3DV4 - SN3925; ConvF(4.14, 4.14, 4.14); Calibrated: 2017/5/24;
- Sensor-Surface: 1.4mm (Mechanical Surface Detection)
- Electronics: DAE3 Sn495; Calibrated: 2017/5/22
- Phantom: SAM\_Left; Type: QD000P40CD; Serial: TP:1815
- Measurement SW: DASY52, Version 52.8 (8); SEMCAD X Version 14.6.10 (7373)

**Area Scan (51x101x1):** Interpolated grid: dx=1.000 mm, dy=1.000 mm

Maximum value of SAR (interpolated) = 0.729 W/kg

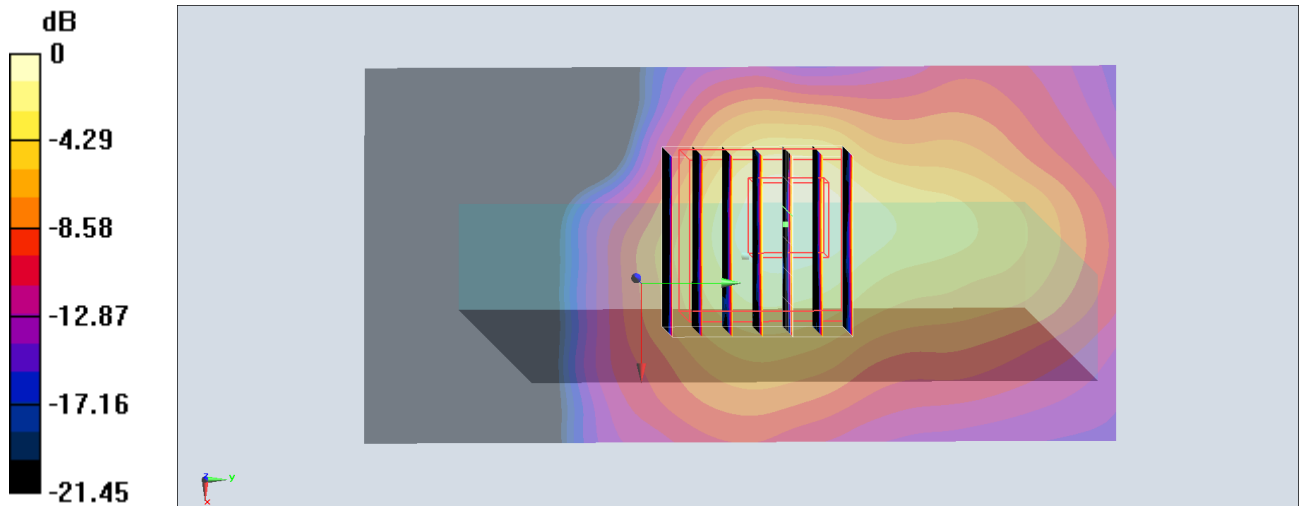
**Zoom Scan (7x7x7)/Cube 0:** Measurement grid: dx=4mm, dy=4mm, dz=1.4mm

Reference Value = 10.08 V/m; Power Drift = -0.03 dB

Peak SAR (extrapolated) = 1.22 W/kg

**SAR(1 g) = 0.298 W/kg; SAR(10 g) = 0.096 W/kg**

Maximum value of SAR (measured) = 0.738 W/kg



0 dB = 0.738 W/kg = -1.32 dBW/kg

## #30\_GSM850\_GPRS (4 Tx slots)\_Back\_10mm\_Ch128

Communication System: GSM850 ; Frequency: 824.2 MHz; Duty Cycle: 1:2.08

Medium: MSL\_850\_170803 Medium parameters used :  $f = 824.2$  MHz;  $\sigma = 0.967$  S/m;  $\epsilon_r = 55.995$ ;  $\rho = 1000$  kg/m<sup>3</sup>

Ambient Temperature : 23.1 °C ; Liquid Temperature : 22.1 °C

### DASY5 Configuration

- Probe: ES3DV3 - SN3270; ConvF(6.01, 6.01, 6.01); Calibrated: 2016/8/26;
- Sensor-Surface: 3mm (Mechanical Surface Detection)
- Electronics: DAE4 Sn778; Calibrated: 2017/5/22
- Phantom: SAM\_RIGHT; Type: QD000P40CD; Serial: 1719
- Measurement SW: DASY52, Version 52.8 (8); SEMCAD X Version 14.6.10 (7373)

**Area Scan (71x121x1):** Interpolated grid: dx=1.500 mm, dy=1.500 mm

Maximum value of SAR (interpolated) = 0.640 W/kg

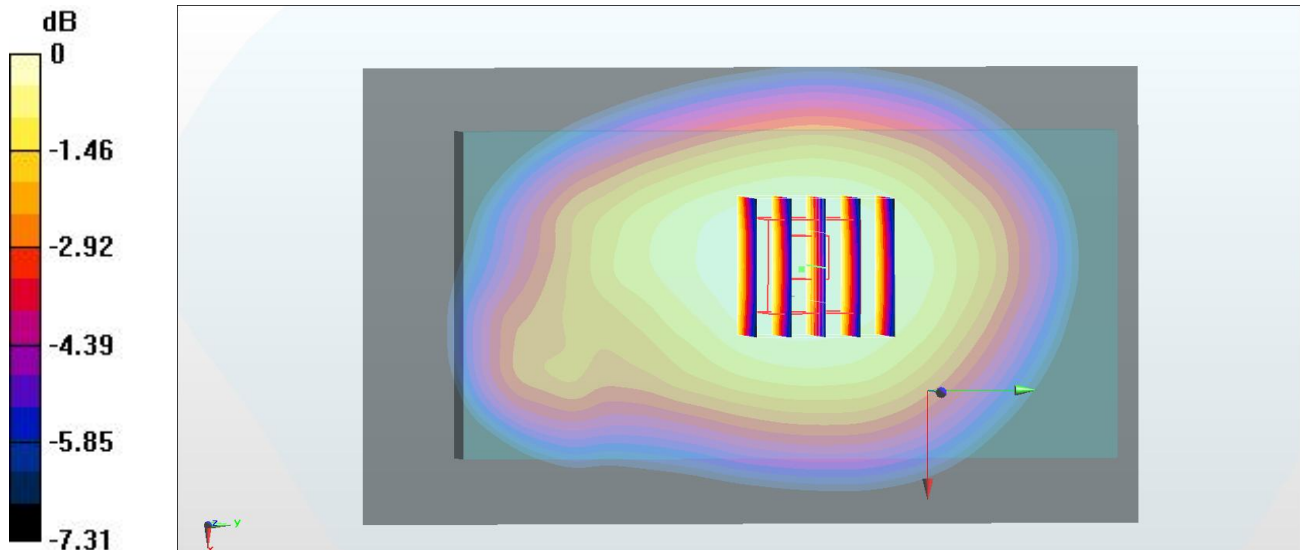
**Zoom Scan (5x5x7)/Cube 0:** Measurement grid: dx=8mm, dy=8mm, dz=5mm

Reference Value = 26.06 V/m; Power Drift = 0.02 dB

Peak SAR (extrapolated) = 0.700 W/kg

**SAR(1 g) = 0.563 W/kg; SAR(10 g) = 0.437 W/kg**

Maximum value of SAR (measured) = 0.618 W/kg



0 dB = 0.618 W/kg = -2.09 dBW/kg

**#31\_GSM1900\_GPRS (3 Tx slots)\_Back\_10mm\_Ch810**

Communication System: PCS ; Frequency: 1909.8 MHz; Duty Cycle: 1:2.77

Medium: MSL\_1900\_170802 Medium parameters used:  $f = 1910$  MHz;  $\sigma = 1.574$  S/m;  $\epsilon_r = 53.508$ ;  $\rho = 1000$  kg/m<sup>3</sup>

Ambient Temperature : 23.4 °C ; Liquid Temperature : 22.4 °C

**DASY5 Configuration**

- Probe: ES3DV3 - SN3270; ConvF(4.7, 4.7, 4.7); Calibrated: 2016/8/26;
- Sensor-Surface: 3mm (Mechanical Surface Detection)
- Electronics: DAE4 Sn778; Calibrated: 2017/5/22
- Phantom: SAM\_RIGHT; Type: QD000P40CD; Serial: 1719
- Measurement SW: DASY52, Version 52.8 (8); SEMCAD X Version 14.6.10 (7373)

**Area Scan (71x121x1):** Interpolated grid: dx=1.500 mm, dy=1.500 mm

Maximum value of SAR (interpolated) = 0.760 W/kg

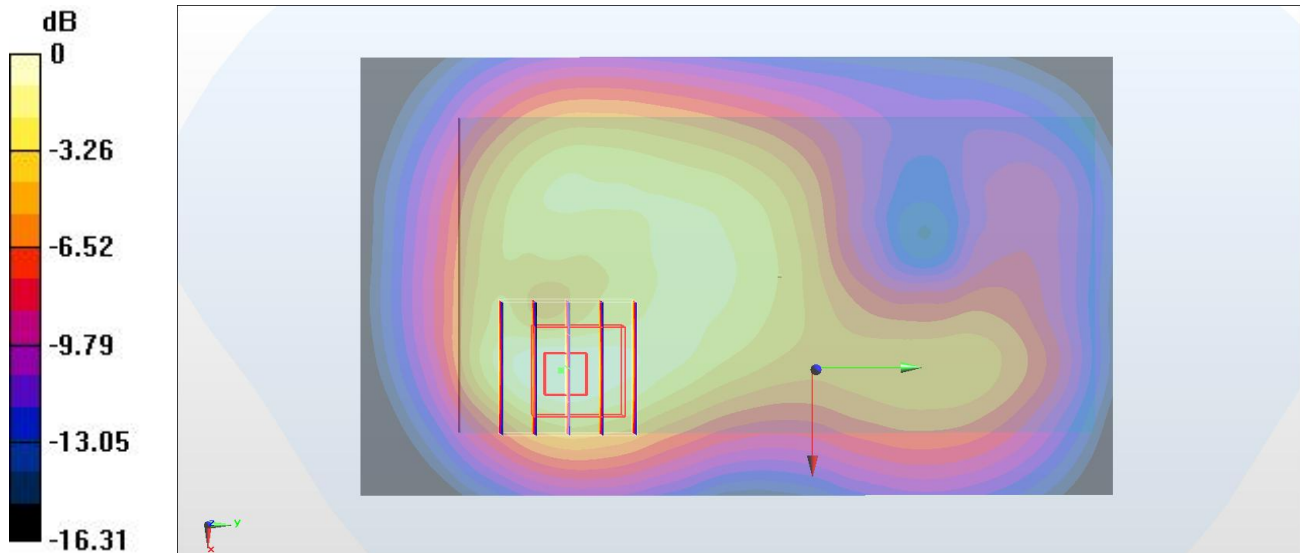
**Zoom Scan (5x5x7)/Cube 0:** Measurement grid: dx=8mm, dy=8mm, dz=5mm

Reference Value = 19.03 V/m; Power Drift = -0.19 dB

Peak SAR (extrapolated) = 0.964 W/kg

**SAR(1 g) = 0.585 W/kg; SAR(10 g) = 0.332 W/kg**

Maximum value of SAR (measured) = 0.723 W/kg



0 dB = 0.723 W/kg = -1.41 dBW/kg

## #32\_WCDMA II\_RMC 12.2Kbps\_Back\_10mm\_Ch9538

Communication System: WCDMA ; Frequency: 1907.6 MHz; Duty Cycle: 1:1

Medium: MSL\_1900\_170802 Medium parameters used:  $f = 1908$  MHz;  $\sigma = 1.572$  S/m;  $\epsilon_r = 53.515$ ;  $\rho = 1000$  kg/m<sup>3</sup>

Ambient Temperature : 23.4 °C ; Liquid Temperature : 22.4 °C

### DASY5 Configuration

- Probe: ES3DV3 - SN3270; ConvF(4.7, 4.7, 4.7); Calibrated: 2016/8/26;
- Sensor-Surface: 3mm (Mechanical Surface Detection)
- Electronics: DAE4 Sn778; Calibrated: 2017/5/22
- Phantom: SAM\_RIGHT; Type: QD000P40CD; Serial: 1719
- Measurement SW: DASY52, Version 52.8 (8); SEMCAD X Version 14.6.10 (7373)

**Area Scan (71x121x1):** Interpolated grid: dx=1.500 mm, dy=1.500 mm

Maximum value of SAR (interpolated) = 0.947 W/kg

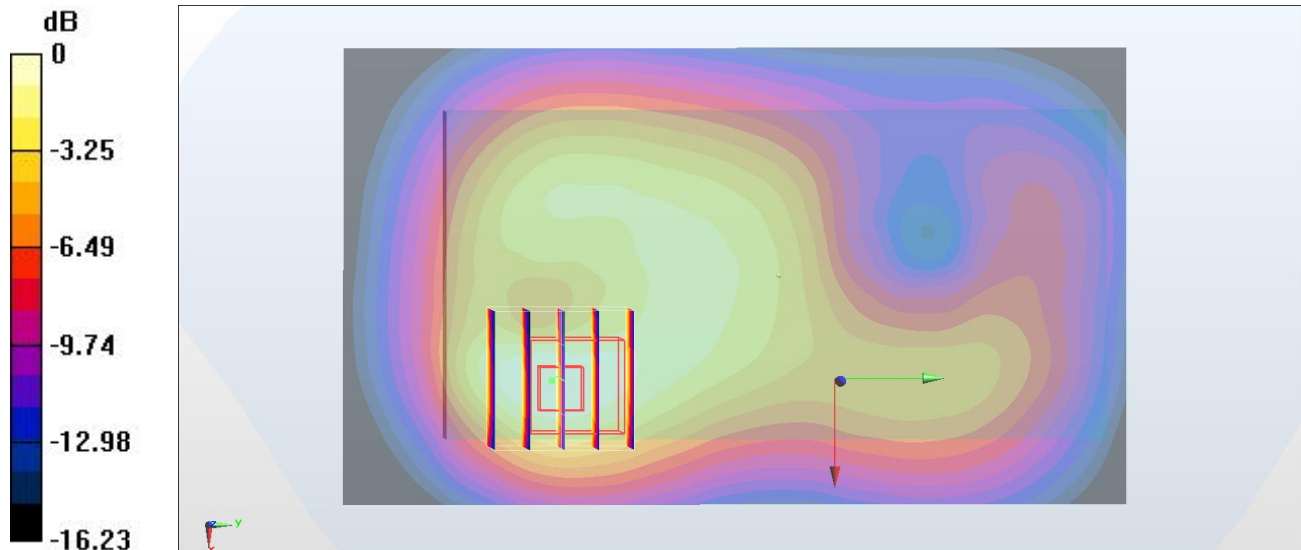
**Zoom Scan (5x5x7)/Cube 0:** Measurement grid: dx=8mm, dy=8mm, dz=5mm

Reference Value = 20.86 V/m; Power Drift = -0.10 dB

Peak SAR (extrapolated) = 1.20 W/kg

**SAR(1 g) = 0.727 W/kg; SAR(10 g) = 0.414 W/kg**

Maximum value of SAR (measured) = 0.877 W/kg



0 dB = 0.877 W/kg = -0.57 dBW/kg

### #33\_WCDMA IV\_RMC 12.2Kbps\_Front\_10mm\_Ch1513

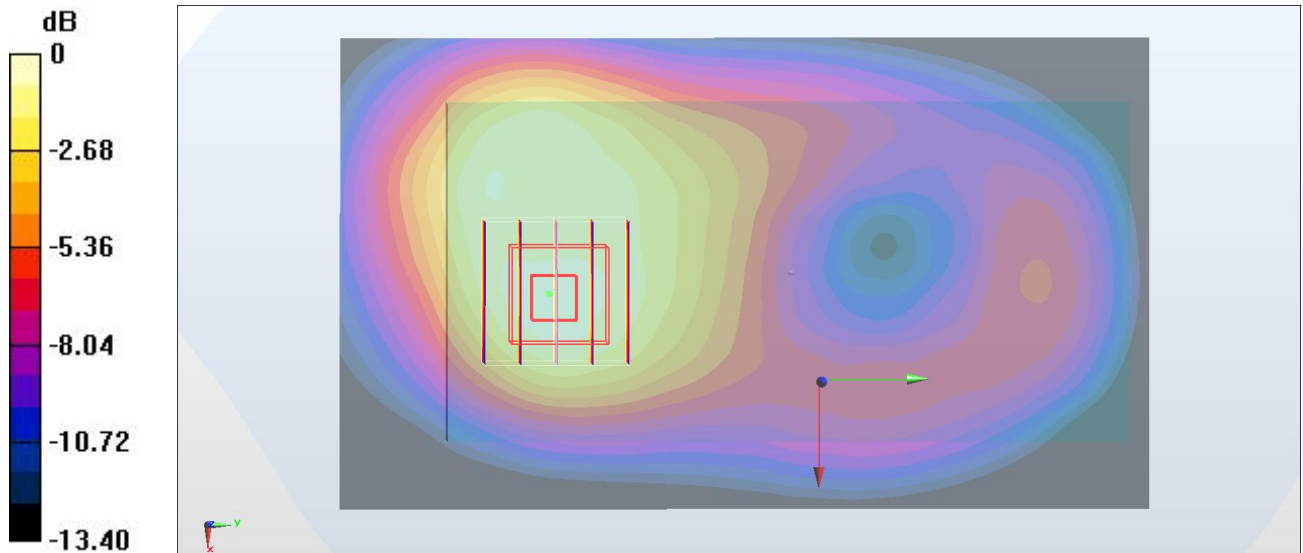
Communication System: WCDMA ; Frequency: 1752.6 MHz; Duty Cycle: 1:1  
 Medium: MSL\_1750\_170802 Medium parameters used:  $f = 1753 \text{ MHz}$ ;  $\sigma = 1.491 \text{ S/m}$ ;  $\epsilon_r = 54.984$ ;  $\rho = 1000 \text{ kg/m}^3$   
 Ambient Temperature :  $23.4 \text{ }^\circ\text{C}$ ; Liquid Temperature :  $22.4 \text{ }^\circ\text{C}$

#### DASY5 Configuration

- Probe: ES3DV3 - SN3270; ConvF(4.95, 4.95, 4.95); Calibrated: 2016/8/26;
- Sensor-Surface: 3mm (Mechanical Surface Detection)
- Electronics: DAE4 Sn778; Calibrated: 2017/5/22
- Phantom: SAM\_RIGHT; Type: QD000P40CD; Serial: 1719
- Measurement SW: DASY52, Version 52.8 (8); SEMCAD X Version 14.6.10 (7373)

**Area Scan (71x121x1):** Interpolated grid:  $dx=1.500 \text{ mm}$ ,  $dy=1.500 \text{ mm}$   
 Maximum value of SAR (interpolated) =  $0.751 \text{ W/kg}$

**Zoom Scan (5x5x7)/Cube 0:** Measurement grid:  $dx=8\text{mm}$ ,  $dy=8\text{mm}$ ,  $dz=5\text{mm}$   
 Reference Value =  $19.65 \text{ V/m}$ ; Power Drift =  $0.18 \text{ dB}$   
 Peak SAR (extrapolated) =  $0.939 \text{ W/kg}$   
**SAR(1 g) =  $0.648 \text{ W/kg}$ ; SAR(10 g) =  $0.418 \text{ W/kg}$**   
 Maximum value of SAR (measured) =  $0.750 \text{ W/kg}$



0 dB =  $0.750 \text{ W/kg} = -1.25 \text{ dBW/kg}$

### #34\_WCDMA V\_RMC 12.2Kbps\_Back\_10mm\_Ch4233

Communication System: WCDMA ; Frequency: 846.6 MHz; Duty Cycle: 1:1

Medium: MSL\_850\_170803 Medium parameters used:  $f = 847 \text{ MHz}$ ;  $\sigma = 0.989 \text{ S/m}$ ;  $\epsilon_r = 55.781$ ;  $\rho = 1000 \text{ kg/m}^3$

Ambient Temperature :  $23.1 \text{ }^\circ\text{C}$ ; Liquid Temperature :  $22.1 \text{ }^\circ\text{C}$

#### DASY5 Configuration

- Probe: ES3DV3 - SN3270; ConvF(6.01, 6.01, 6.01); Calibrated: 2016/8/26;
- Sensor-Surface: 3mm (Mechanical Surface Detection)
- Electronics: DAE4 Sn778; Calibrated: 2017/5/22
- Phantom: SAM\_RIGHT; Type: QD000P40CD; Serial: 1719
- Measurement SW: DASY52, Version 52.8 (8); SEMCAD X Version 14.6.10 (7373)

**Area Scan (71x121x1):** Interpolated grid:  $dx=1.500 \text{ mm}$ ,  $dy=1.500 \text{ mm}$

Maximum value of SAR (interpolated) =  $0.400 \text{ W/kg}$

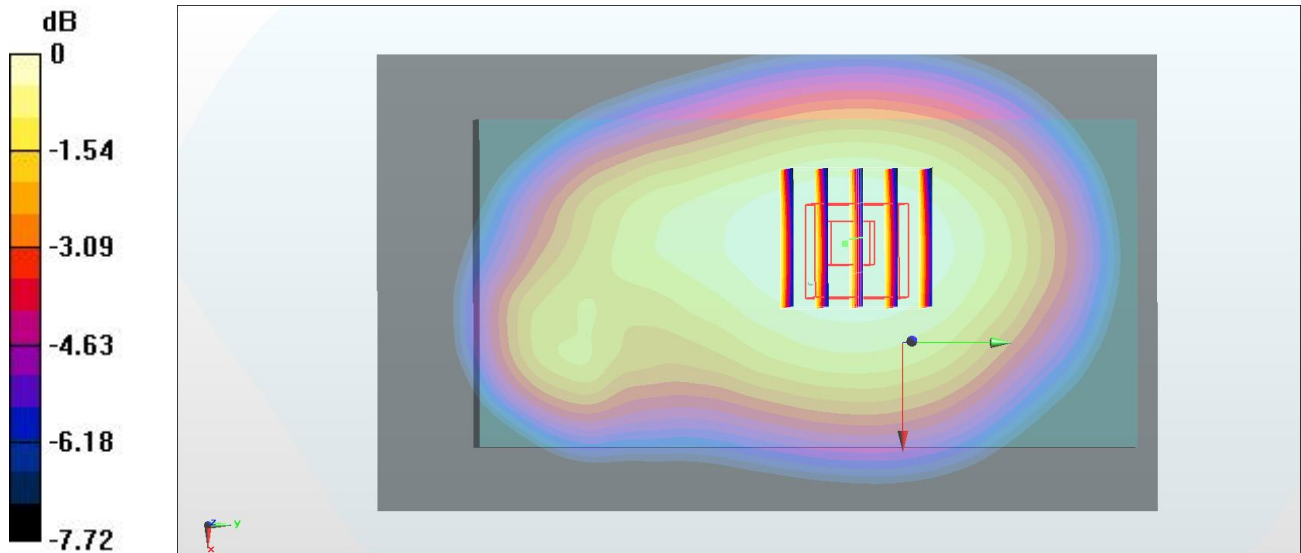
**Zoom Scan (5x5x7)/Cube 0:** Measurement grid:  $dx=8\text{mm}$ ,  $dy=8\text{mm}$ ,  $dz=5\text{mm}$

Reference Value =  $20.51 \text{ V/m}$ ; Power Drift =  $0.00 \text{ dB}$

Peak SAR (extrapolated) =  $0.445 \text{ W/kg}$

**SAR(1 g) =  $0.357 \text{ W/kg}$ ; SAR(10 g) =  $0.275 \text{ W/kg}$**

Maximum value of SAR (measured) =  $0.391 \text{ W/kg}$



0 dB =  $0.391 \text{ W/kg} = -4.08 \text{ dBW/kg}$



### #35\_LTE Band 2\_20M\_QPSK\_1\_0\_Back\_10mm\_Ch18700

Communication System: LTE ; Frequency: 1860 MHz;Duty Cycle: 1:1

Medium: MSL\_1900\_170802 Medium parameters used:  $f = 1860$  MHz;  $\sigma = 1.522$  S/m;  $\epsilon_r = 53.708$ ;  $\rho = 1000$  kg/m<sup>3</sup>

Ambient Temperature : 23.4 °C ; Liquid Temperature : 22.4 °C

#### DASY5 Configuration

- Probe: ES3DV3 - SN3270; ConvF(4.7, 4.7, 4.7); Calibrated: 2016/8/26;
- Sensor-Surface: 3mm (Mechanical Surface Detection)
- Electronics: DAE4 Sn778; Calibrated: 2017/5/22
- Phantom: SAM\_RIGHT; Type: QD000P40CD; Serial: 1719
- Measurement SW: DASY52, Version 52.8 (8); SEMCAD X Version 14.6.10 (7373)

**Area Scan (71x81x1):** Interpolated grid: dx=1.500 mm, dy=1.500 mm

Maximum value of SAR (interpolated) = 0.811 W/kg

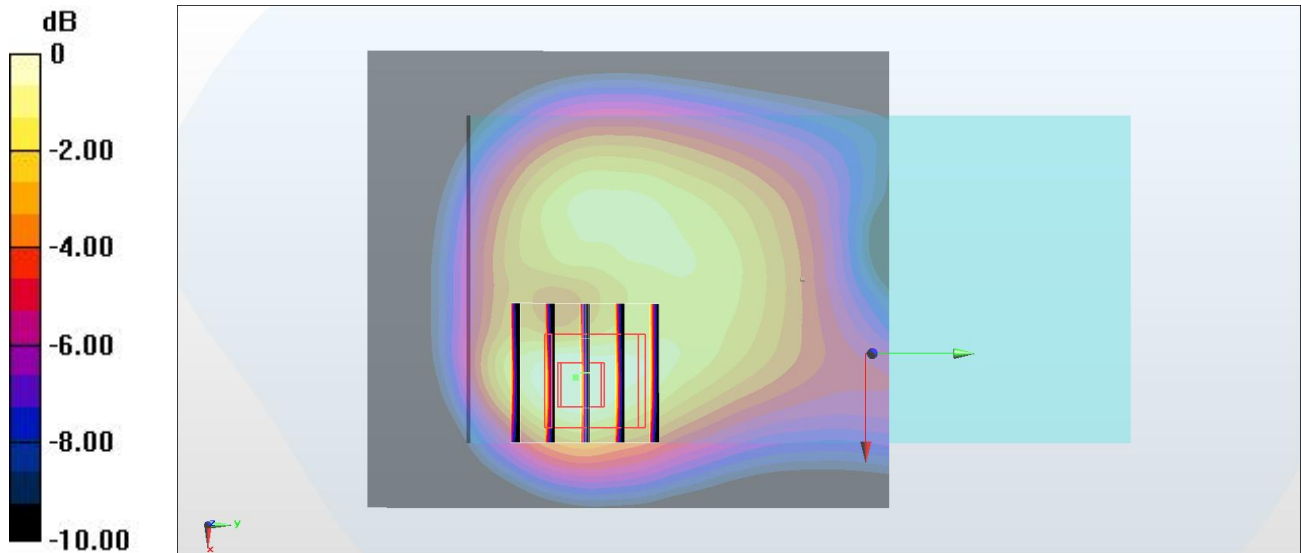
**Zoom Scan (5x5x7)/Cube 0:** Measurement grid: dx=8mm, dy=8mm, dz=5mm

Reference Value = 19.74 V/m; Power Drift = -0.05 dB

Peak SAR (extrapolated) = 1.02 W/kg

**SAR(1 g) = 0.635 W/kg; SAR(10 g) = 0.368 W/kg**

Maximum value of SAR (measured) = 0.747 W/kg



0 dB = 0.747 W/kg = -1.27 dBW/kg

### #36\_LTE Band 4\_20M\_QPSK\_1\_0\_Front\_10mm\_Ch20175

Communication System: LTE ; Frequency: 1732.5 MHz; Duty Cycle: 1:1

Medium: MSL\_1750\_170802 Medium parameters used :  $f = 1732.5$  MHz;  $\sigma = 1.47$  S/m;  $\epsilon_r = 55.022$ ;  $\rho = 1000$  kg/m<sup>3</sup>

Ambient Temperature : 23.4 °C ; Liquid Temperature : 22.4 °C

#### DASY5 Configuration

- Probe: ES3DV3 - SN3270; ConvF(4.95, 4.95, 4.95); Calibrated: 2016/8/26;
- Sensor-Surface: 3mm (Mechanical Surface Detection)
- Electronics: DAE4 Sn778; Calibrated: 2017/5/22
- Phantom: SAM\_RIGHT; Type: QD000P40CD; Serial: 1719
- Measurement SW: DASY52, Version 52.8 (8); SEMCAD X Version 14.6.10 (7373)

**Area Scan (71x71x1):** Interpolated grid: dx=1.500 mm, dy=1.500 mm

Maximum value of SAR (interpolated) = 0.547 W/kg

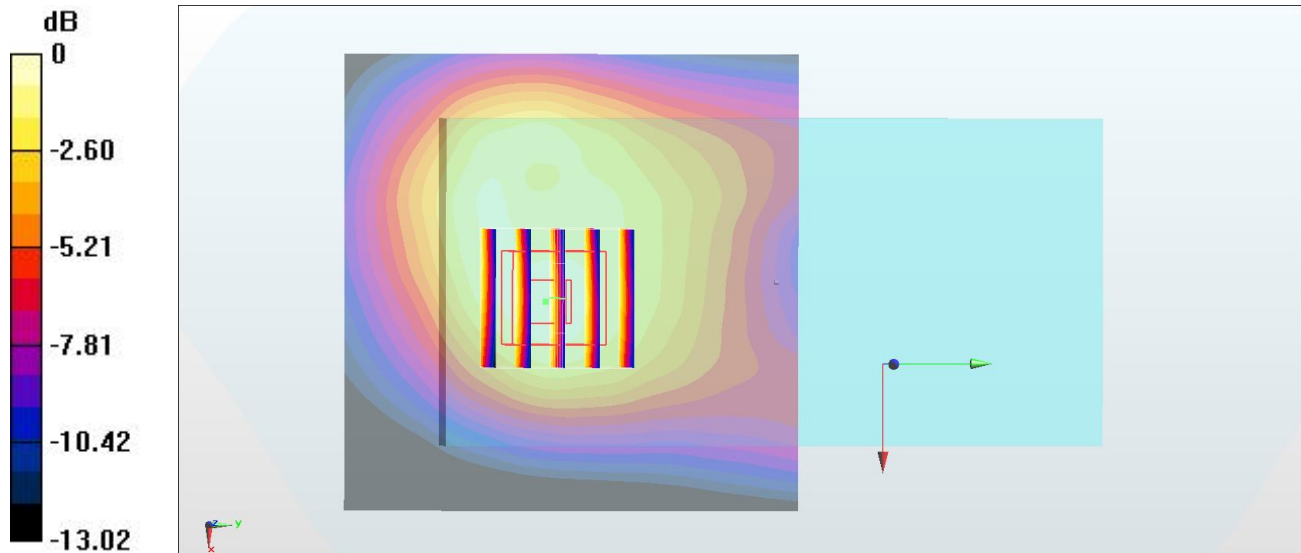
**Zoom Scan (5x5x7)/Cube 0:** Measurement grid: dx=8mm, dy=8mm, dz=5mm

Reference Value = 16.60 V/m; Power Drift = 0.15 dB

Peak SAR (extrapolated) = 0.664 W/kg

**SAR(1 g) = 0.462 W/kg; SAR(10 g) = 0.301 W/kg**

Maximum value of SAR (measured) = 0.534 W/kg



0 dB = 0.534 W/kg = -2.72 dBW/kg

### #37\_LTE Band 5\_10M\_QPSK\_1\_0\_Back\_10mm\_Ch20525

Communication System: LTE ; Frequency: 836.5 MHz;Duty Cycle: 1:1

Medium: MSL\_850\_170803 Medium parameters used :  $f = 836.5$  MHz;  $\sigma = 0.979$  S/m;  $\epsilon_r = 55.883$ ;  $\rho = 1000$  kg/m<sup>3</sup>

Ambient Temperature : 23.1 °C ; Liquid Temperature : 22.1 °C

#### DASY5 Configuration

- Probe: ES3DV3 - SN3270; ConvF(6.01, 6.01, 6.01); Calibrated: 2016/8/26;
- Sensor-Surface: 3mm (Mechanical Surface Detection)
- Electronics: DAE4 Sn778; Calibrated: 2017/5/22
- Phantom: SAM\_RIGHT; Type: QD000P40CD; Serial: 1719
- Measurement SW: DASY52, Version 52.8 (8); SEMCAD X Version 14.6.10 (7373)

**Area Scan (71x121x1):** Interpolated grid: dx=1.500 mm, dy=1.500 mm

Maximum value of SAR (interpolated) = 0.456 W/kg

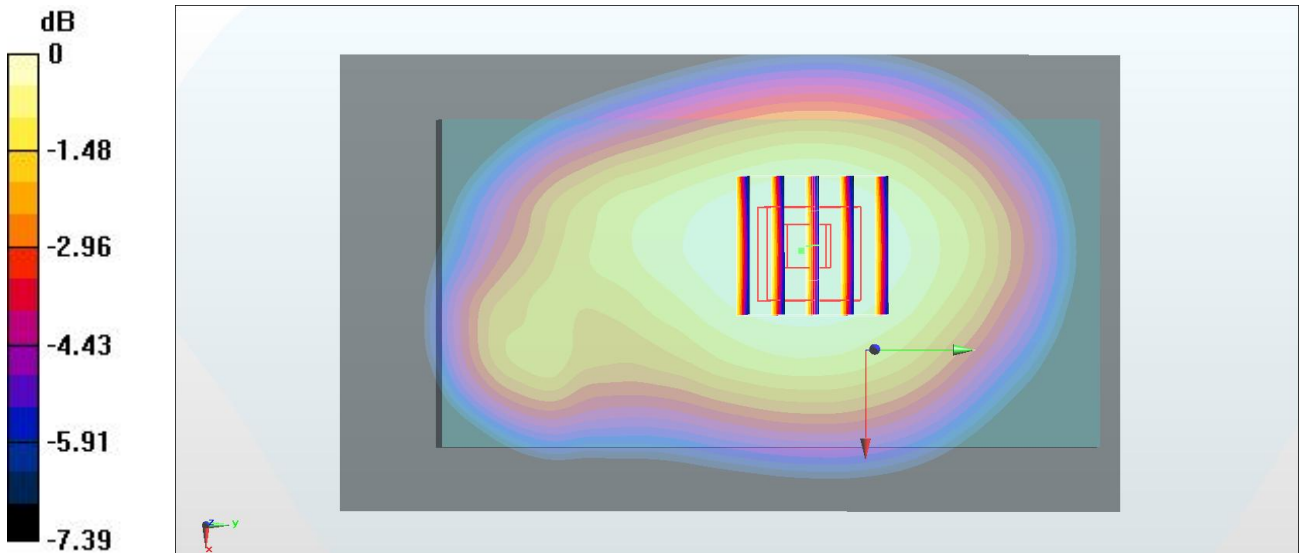
**Zoom Scan (5x5x7)/Cube 0:** Measurement grid: dx=8mm, dy=8mm, dz=5mm

Reference Value = 22.09 V/m; Power Drift = -0.03 dB

Peak SAR (extrapolated) = 0.501 W/kg

**SAR(1 g) = 0.406 W/kg; SAR(10 g) = 0.315 W/kg**

Maximum value of SAR (measured) = 0.443 W/kg



0 dB = 0.443 W/kg = -3.54 dBW/kg

### #38\_LTE Band 7\_20M\_QPSK\_1\_0\_Front\_10mm\_Ch21100

Communication System: LTE ; Frequency: 2535 MHz;Duty Cycle: 1:1

Medium: MSL\_2600\_170731 Medium parameters used :  $f = 2535$  MHz;  $\sigma = 2.121$  S/m;  $\epsilon_r = 54.407$ ;  $\rho = 1000$  kg/m<sup>3</sup>

Ambient Temperature : 23.2 °C ; Liquid Temperature : 22.2 °C

#### DASY5 Configuration

- Probe: ES3DV3 - SN3270; ConvF(4.12, 4.12, 4.12); Calibrated: 2016/8/26;
- Sensor-Surface: 3mm (Mechanical Surface Detection)
- Electronics: DAE4 Sn778; Calibrated: 2017/5/22
- Phantom: SAM\_RIGHT; Type: QD000P40CD; Serial: 1719
- Measurement SW: DASY52, Version 52.8 (8); SEMCAD X Version 14.6.10 (7373)

**Area Scan (81x71x1):** Interpolated grid: dx=1.200 mm, dy=1.200 mm

Maximum value of SAR (interpolated) = 1.18 W/kg

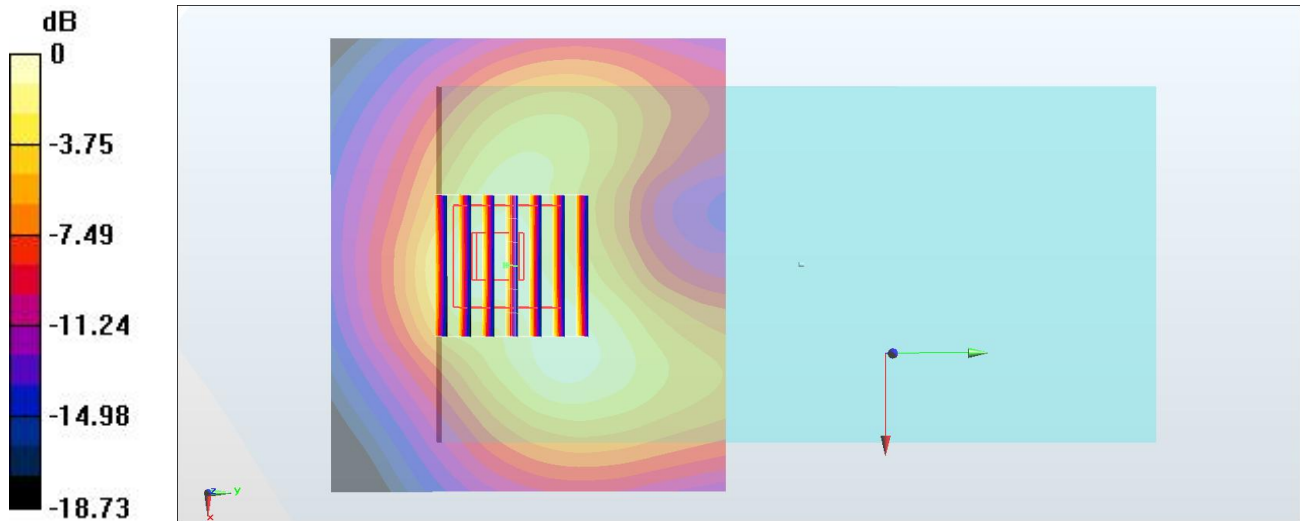
**Zoom Scan (7x7x7)/Cube 0:** Measurement grid: dx=5mm, dy=5mm, dz=5mm

Reference Value = 20.16 V/m; Power Drift = 0.02 dB

Peak SAR (extrapolated) = 1.89 W/kg

**SAR(1 g) = 0.941 W/kg; SAR(10 g) = 0.481 W/kg**

Maximum value of SAR (measured) = 1.18 W/kg



0 dB = 1.18 W/kg = 0.72 dBW/kg

### #39\_LTE Band 38\_20M\_QPSK\_1\_0\_Front\_10mm\_Ch37850

Communication System: LTE TDD ; Frequency: 2580 MHz;Duty Cycle: 1:1.59

Medium: MSL\_2600\_170801 Medium parameters used:  $f = 2580$  MHz;  $\sigma = 2.176$  S/m;  $\epsilon_r = 53.947$ ;  $\rho = 1000$  kg/m<sup>3</sup>

Ambient Temperature : 23.5 °C ; Liquid Temperature : 22.5 °C

#### DASY5 Configuration

- Probe: ES3DV3 - SN3270; ConvF(4.12, 4.12, 4.12); Calibrated: 2016/8/26;
- Sensor-Surface: 3mm (Mechanical Surface Detection)
- Electronics: DAE4 Sn778; Calibrated: 2017/5/22
- Phantom: SAM LEFT; Type: QD000P40CD; Serial: TP:1718
- Measurement SW: DASY52, Version 52.8 (8); SEMCAD X Version 14.6.10 (7373)

**Area Scan (81x71x1):** Interpolated grid: dx=1.200 mm, dy=1.200 mm

Maximum value of SAR (interpolated) = 0.806 W/kg

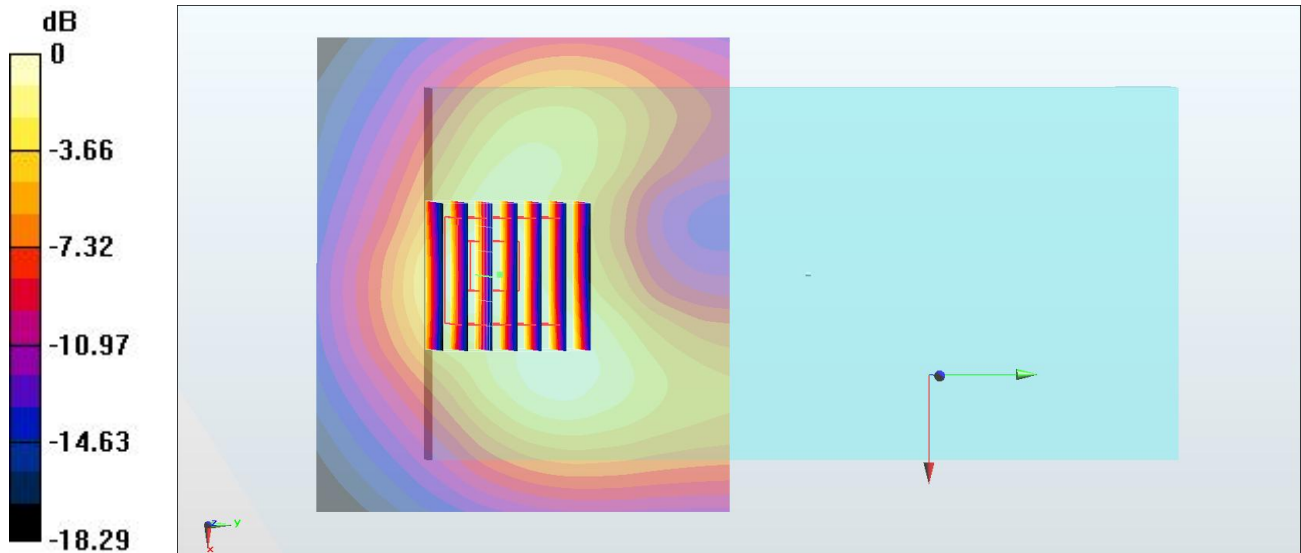
**Zoom Scan (7x7x7)/Cube 0:** Measurement grid: dx=5mm, dy=5mm, dz=5mm

Reference Value = 17.51 V/m; Power Drift = -0.07 dB

Peak SAR (extrapolated) = 1.30 W/kg

**SAR(1 g) = 0.632 W/kg; SAR(10 g) = 0.320 W/kg**

Maximum value of SAR (measured) = 0.796 W/kg



0 dB = 0.796 W/kg = -0.99 dBW/kg

**#40\_LTE Band 41\_20M\_QPSK\_1\_0\_Front\_10mm\_Ch40870**

Communication System: LTE TDD ; Frequency: 2618 MHz; Duty Cycle: 1:1.59

Medium: MSL\_2600\_170801 Medium parameters used:  $f = 2618$  MHz;  $\sigma = 2.226$  S/m;  $\epsilon_r = 53.853$ ;  $\rho = 1000$  kg/m<sup>3</sup>

Ambient Temperature : 23.5 °C ; Liquid Temperature : 22.5 °C

**DASY5 Configuration**

- Probe: ES3DV3 - SN3270; ConvF(4.12, 4.12, 4.12); Calibrated: 2016/8/26;
- Sensor-Surface: 3mm (Mechanical Surface Detection)
- Electronics: DAE4 Sn778; Calibrated: 2017/5/22
- Phantom: SAM LEFT; Type: QD000P40CD; Serial: TP:1718
- Measurement SW: DASY52, Version 52.8 (8); SEMCAD X Version 14.6.10 (7373)

**Area Scan (81x71x1):** Interpolated grid: dx=1.200 mm, dy=1.200 mm

Maximum value of SAR (interpolated) = 0.726 W/kg

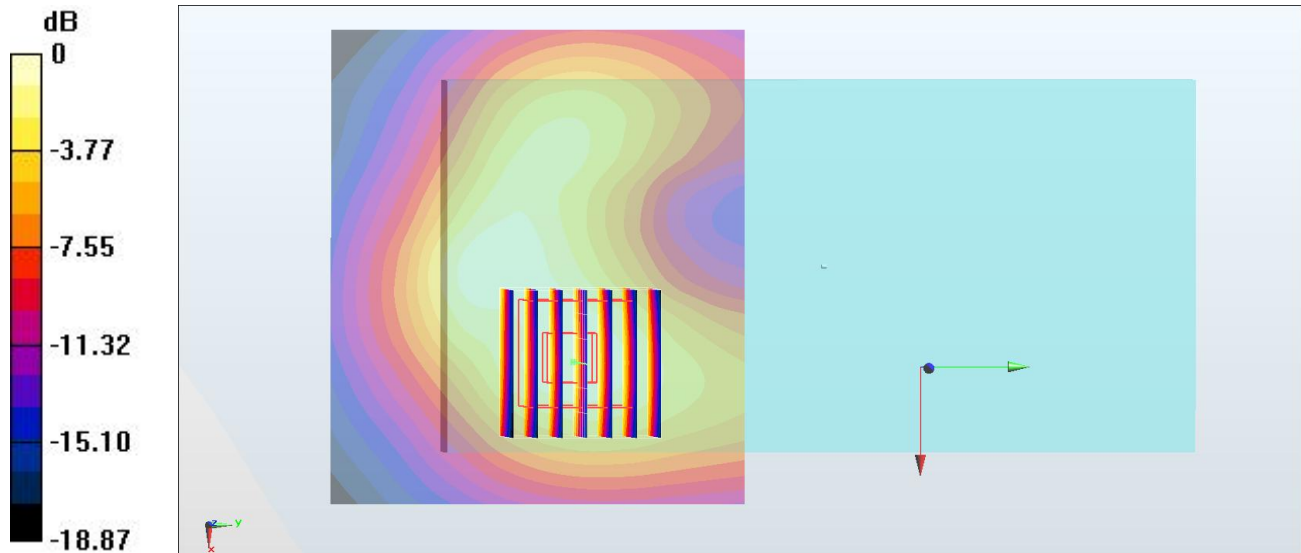
**Zoom Scan (7x7x7)/Cube 0:** Measurement grid: dx=5mm, dy=5mm, dz=5mm

Reference Value = 16.90 V/m; Power Drift = 0.00 dB

Peak SAR (extrapolated) = 1.05 W/kg

**SAR(1 g) = 0.567 W/kg; SAR(10 g) = 0.297 W/kg**

Maximum value of SAR (measured) = 0.708 W/kg



0 dB = 0.708 W/kg = -1.50 dBW/kg

## #41\_WLAN2.4GHz\_802.11b 1Mbps\_Back\_10mm\_Ch6

Communication System: 802.11b; Frequency: 2437 MHz; Duty Cycle: 1:1

Medium: MSL\_2450\_170809 Medium parameters used:  $f = 2437$  MHz;  $\sigma = 1.953$  S/m;  $\epsilon_r = 54.092$ ;  $\rho = 1000$  kg/m<sup>3</sup>

Ambient Temperature : 23.6 °C ; Liquid Temperature : 22.6 °C

DASY5 Configuration:

- Probe: EX3DV4 - SN3925; ConvF(7.94, 7.94, 7.94); Calibrated: 2017/5/24;
- Sensor-Surface: 1.4mm (Mechanical Surface Detection)
- Electronics: DAE3 Sn495; Calibrated: 2017/5/22
- Phantom: SAM\_Left; Type: QD000P40CD; Serial: TP:1815
- Measurement SW: DASY52, Version 52.8 (8); SEMCAD X Version 14.6.10 (7373)

**Area Scan (81x71x1):** Interpolated grid: dx=1.200 mm, dy=1.200 mm

Maximum value of SAR (interpolated) = 0.345 W/kg

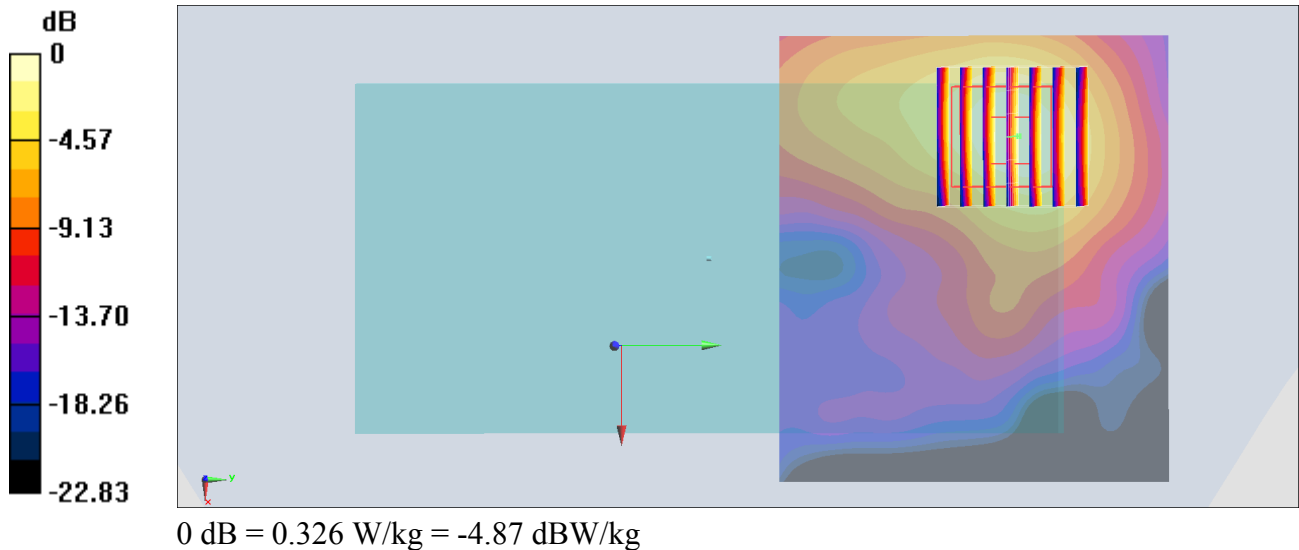
**Zoom Scan (7x7x7)/Cube 0:** Measurement grid: dx=5mm, dy=5mm, dz=5mm

Reference Value = 8.482 V/m; Power Drift = 0.10 dB

Peak SAR (extrapolated) = 0.403 W/kg

**SAR(1 g) = 0.214 W/kg; SAR(10 g) = 0.106 W/kg**

Maximum value of SAR (measured) = 0.326 W/kg



**#42\_WLAN5GHz\_802.11a\_6Mbps\_Back\_10mm\_Ch60**

Communication System: 802.11a ; Frequency: 5300 MHz; Duty Cycle: 1:1.029

Medium: MSL\_5G\_170811 Medium parameters used:  $f = 5300$  MHz;  $\sigma = 5.47$  S/m;  $\epsilon_r = 46.963$ ;  $\rho = 1000$  kg/m<sup>3</sup>

Ambient Temperature : 23.3 °C ; Liquid Temperature : 22.3 °C

DASY5 Configuration:

- Probe: EX3DV4 - SN3925; ConvF(4.59, 4.59, 4.59); Calibrated: 2017/5/24;
- Sensor-Surface: 1.4mm (Mechanical Surface Detection)
- Electronics: DAE3 Sn495; Calibrated: 2017/5/22
- Phantom: SAM\_Left; Type: QD000P40CD; Serial: TP:1815
- Measurement SW: DASY52, Version 52.8 (8); SEMCAD X Version 14.6.10 (7373)

**Area Scan (101x91x1):** Interpolated grid: dx=1.000 mm, dy=1.000 mm

Maximum value of SAR (interpolated) = 1.36 W/kg

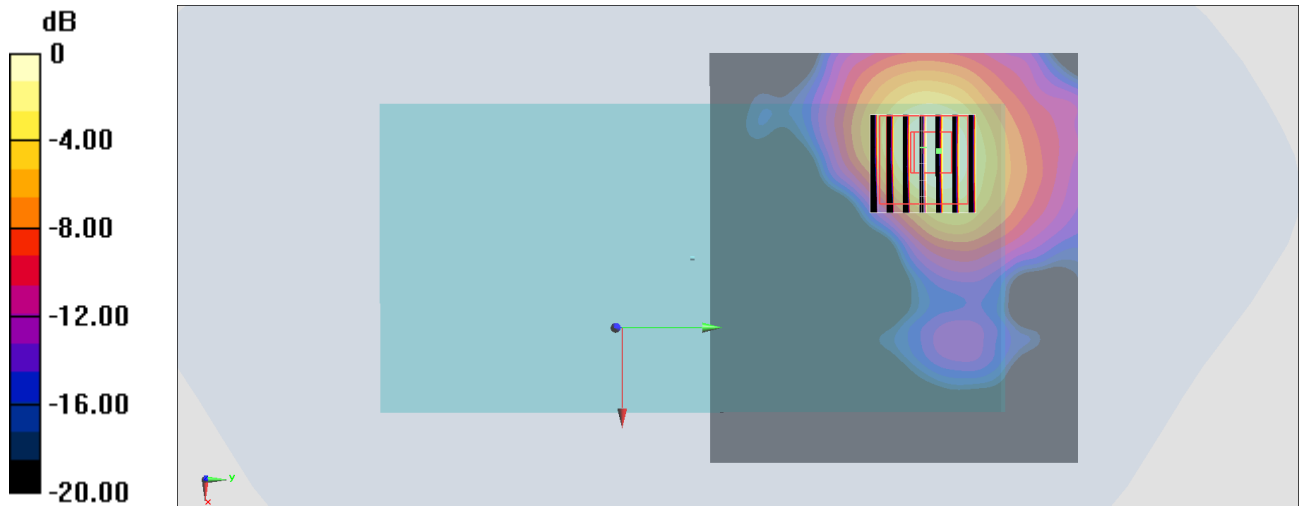
**Zoom Scan (7x7x7)/Cube 0:** Measurement grid: dx=4mm, dy=4mm, dz=1.4mm

Reference Value = 12.72 V/m; Power Drift = 0.13 dB

Peak SAR (extrapolated) = 1.86 W/kg

**SAR(1 g) = 0.542 W/kg; SAR(10 g) = 0.176 W/kg**

Maximum value of SAR (measured) = 1.19 W/kg



0 dB = 1.19 W/kg = 0.76 dBW/kg



## #43\_WLAN5GHz\_802.11a 6Mbps\_Back\_10mm\_Ch116

Communication System: 802.11a ; Frequency: 5580 MHz;Duty Cycle: 1:1.029

Medium: MSL\_5G\_170811 Medium parameters used:  $f = 5580$  MHz;  $\sigma = 5.823$  S/m;  $\epsilon_r = 46.5$ ;  $\rho = 1000$  kg/m<sup>3</sup>

Ambient Temperature : 23.3 °C ; Liquid Temperature : 22.3 °C

DASY5 Configuration:

- Probe: EX3DV4 - SN3925; ConvF(4.17, 4.17, 4.17); Calibrated: 2017/5/24;
- Sensor-Surface: 1.4mm (Mechanical Surface Detection)
- Electronics: DAE3 Sn495; Calibrated: 2017/5/22
- Phantom: SAM\_Left; Type: QD000P40CD; Serial: TP:1815
- Measurement SW: DASY52, Version 52.8 (8);SEMCAD X Version 14.6.10 (7373)

**Area Scan (101x91x1):** Interpolated grid: dx=1.000 mm, dy=1.000 mm

Maximum value of SAR (interpolated) = 1.50 W/kg

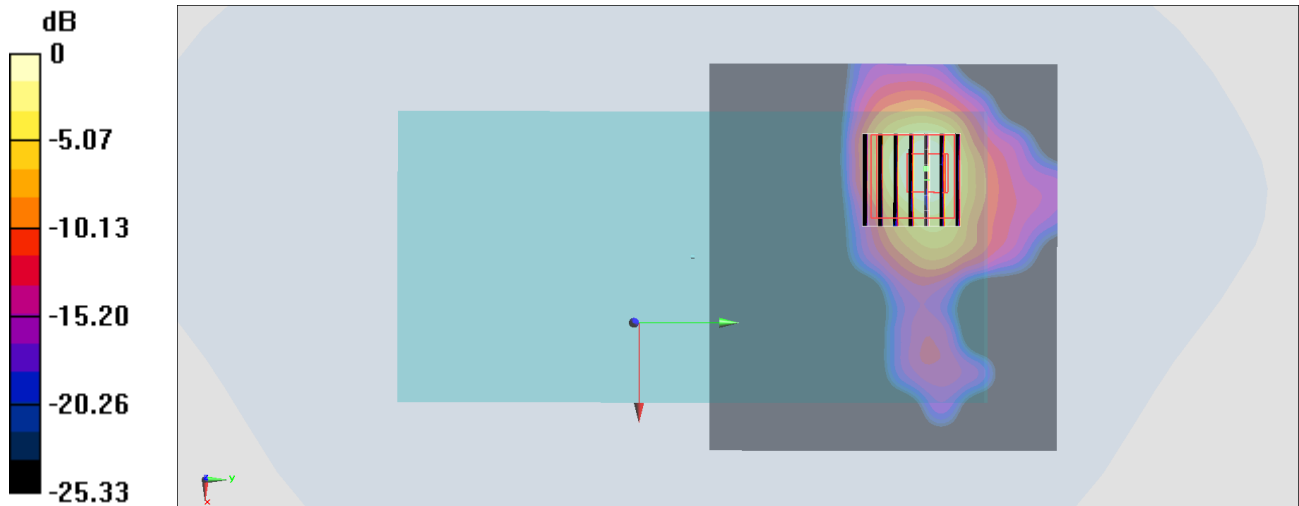
**Zoom Scan (7x7x7)/Cube 0:** Measurement grid: dx=4mm, dy=4mm, dz=1.4mm

Reference Value = 13.87 V/m; Power Drift = 0.06 dB

Peak SAR (extrapolated) = 3.99 W/kg

**SAR(1 g) = 0.506 W/kg; SAR(10 g) = 0.144 W/kg**

Maximum value of SAR (measured) = 1.22 W/kg



0 dB = 1.22 W/kg = 0.86 dBW/kg

**#44\_WLAN5GHz\_802.11a\_6Mbps\_Back\_10mm\_Ch157**

Communication System: 802.11a; Frequency: 5785 MHz; Duty Cycle: 1:1.029

Medium: MSL\_5G\_170811 Medium parameters used:  $f = 5785$  MHz;  $\sigma = 6.107$  S/m;  $\epsilon_r = 46.179$ ;  $\rho = 1000$  kg/m<sup>3</sup>

Ambient Temperature : 23.3 °C ; Liquid Temperature : 22.3 °C

DASY5 Configuration:

- Probe: EX3DV4 - SN3925; ConvF(4.14, 4.14, 4.14); Calibrated: 2017/5/24;
- Sensor-Surface: 1.4mm (Mechanical Surface Detection)
- Electronics: DAE3 Sn495; Calibrated: 2017/5/22
- Phantom: SAM\_Left; Type: QD000P40CD; Serial: TP:1815
- Measurement SW: DASY52, Version 52.8 (8); SEMCAD X Version 14.6.10 (7373)

**Area Scan (101x91x1):** Interpolated grid: dx=1.000 mm, dy=1.000 mm

Maximum value of SAR (interpolated) = 0.750 W/kg

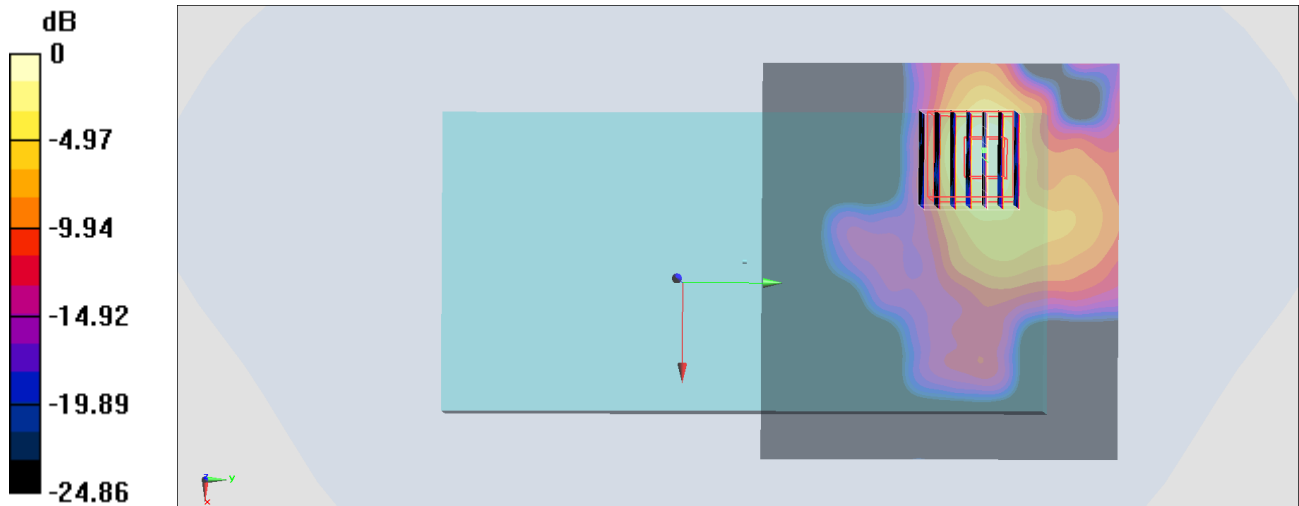
**Zoom Scan (7x7x7)/Cube 0:** Measurement grid: dx=4mm, dy=4mm, dz=1.4mm

Reference Value = 7.677 V/m; Power Drift = -0.02 dB

Peak SAR (extrapolated) = 1.04 W/kg

**SAR(1 g) = 0.246 W/kg; SAR(10 g) = 0.069 W/kg**

Maximum value of SAR (measured) = 0.679 W/kg



0 dB = 0.679 W/kg = -1.68 dBW/kg