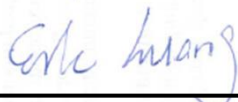


FCC SAR Test Report

APPLICANT : Bullitt Group
EQUIPMENT : Rugged Smart Phone
BRAND NAME : CAT
MODEL NAME : S31
FCC ID : ZL5S31A
STANDARD : FCC 47 CFR Part 2 (2.1093)
ANSI/IEEE C95.1-1992
IEEE 1528-2013

We, SPORTON INTERNATIONAL INC., would like to declare that the tested sample has been evaluated in accordance with the procedures and had been in compliance with the applicable technical standards.

The test results in this report apply exclusively to the tested model / sample. Without written approval of SPORTON INTERNATIONAL INC., the test report shall not be reproduced except in full.



Reviewed by: Eric Huang / Manager



Approved by: Jones Tsai / Manager



SPORTON INTERNATIONAL INC.

No.52, Hwa Ya 1st Rd., Hwa Ya Technology Park, Kwei-Shan District, Taoyuan City, Taiwan (R.O.C.)



Table of Contents

1. Statement of Compliance 4
2. Administration Data 5
3. Guidance Applied..... 5
4. Equipment Under Test (EUT) Information 6
4.1 General Information 6
4.2 General LTE SAR Test and Reporting Considerations 7
5. RF Exposure Limits..... 8
5.1 Uncontrolled Environment..... 8
5.2 Controlled Environment..... 8
6. Specific Absorption Rate (SAR)..... 9
6.1 Introduction 9
6.2 SAR Definition..... 9
7. System Description and Setup10
7.1 E-Field Probe 11
7.2 Data Acquisition Electronics (DAE) 11
7.3 Phantom..... 12
7.4 Device Holder..... 13
8. Measurement Procedures14
8.1 Spatial Peak SAR Evaluation 14
8.2 Power Reference Measurement..... 15
8.3 Area Scan 15
8.4 Zoom Scan..... 16
8.5 Volume Scan Procedures 16
8.6 Power Drift Monitoring..... 16
9. Test Equipment List17
10. System Verification18
10.1 Tissue Simulating Liquids..... 18
10.2 Tissue Verification 19
10.3 System Performance Check Results..... 20
11. RF Exposure Positions21
11.1 Ear and handset reference point 21
11.2 Definition of the cheek position..... 22
11.3 Definition of the tilt position..... 23
11.4 Body Worn Accessory 24
11.5 Wireless Router..... 24
12. Conducted RF Output Power (Unit: dBm).....25
13. Antenna Location42
14. SAR Test Results43
14.1 Head SAR 45
14.2 Hotspot SAR 48
14.3 Body Worn Accessory SAR 51
14.4 Repeated SAR Measurement 53
15. Simultaneous Transmission Analysis54
15.1 Head Exposure Conditions 55
15.2 Hotspot Exposure Conditions..... 56
15.3 Body-Worn Accessory Exposure Conditions 58
16. Uncertainty Assessment59
17. References.....61
Appendix A. Plots of System Performance Check
Appendix B. Plots of High SAR Measurement
Appendix C. DASy Calibration Certificate
Appendix D. Test Setup Photos



1. Statement of Compliance

The maximum results of Specific Absorption Rate (SAR) found during testing for **Bullitt Group, Rugged Smart Phone, S31**, are as follows.

Equipment Class	Frequency Band		Highest SAR Summary			Highest Simultaneous Transmission 1g SAR (W/kg)
			Head (Separation 0mm)	Body-worn (Separation 10mm)	Hotspot (Separation 10mm)	
			1g SAR (W/kg)			
Licensed	GSM	GSM850	0.78	1.05	1.05	1.43
		GSM1900	0.55	0.63	0.63	
	WCDMA	WCDMA II	0.91	1.14	1.14	
		WCDMA IV	0.57	1.19	1.19	
		WCDMA V	0.58	0.89	0.89	
	LTE	LTE Band 2	1.04	1.19	1.19	
		LTE Band 4	0.47	0.90	0.90	
		LTE Band 5	0.59	0.86	0.86	
LTE Band 7		0.42	1.19	1.19		
DTS	WLAN	2.4GHz WLAN	0.40	0.15	0.15	1.43
DSS	2.4GHz Band	Bluetooth	0.06			1.40
Date of Testing:			2017/9/18 ~ 2017/9/27			

This device is in compliance with Specific Absorption Rate (SAR) for general population/uncontrolled exposure limits (1.6 W/kg for Partial-Body 1g SAR, 4.0 W/kg for Product Specific 10g SAR) specified in FCC 47 CFR part 2 (2.1093) and ANSI/IEEE C95.1-1992, and had been tested in accordance with the measurement methods and procedures specified in IEEE 1528-2013 and FCC KDB publications



2. Administration Data

Sporton Lab is accredited to ISO 17025 by Taiwan Accreditation Foundation (TAF code: 1190) and the FCC designation No. TW1190 under the FCC 2.948(e) by Mutual Recognition Agreement (MRA) in FCC test.

Testing Laboratory	
Test Site	SPORTON INTERNATIONAL INC.
Test Site Location	No.52, Hwa Ya 1st Rd., Hwa Ya Technology Park, Kwei-Shan District, Taoyuan City, Taiwan (R.O.C.) TEL: +886-3-327-3456 FAX: +886-3-328-4978

Applicant	
Company Name	Bullitt Group
Address	One Valpy, Valpy Street, Reading, Berkshire, England RG1 1AR

Manufacturer	
Company Name	Compal Electronics, INC.
Address	No. 385, Yangguang St. Neihu District, Taipei City 11491, Taiwan, R.O.C

3. Guidance Applied

The Specific Absorption Rate (SAR) testing specification, method, and procedure for this device is in accordance with the following standards:

- FCC 47 CFR Part 2 (2.1093)
- ANSI/IEEE C95.1-1992
- IEEE 1528-2013
- FCC KDB 865664 D01 SAR Measurement 100 MHz to 6 GHz v01r04
- FCC KDB 865664 D02 SAR Reporting v01r02
- FCC KDB 447498 D01 General RF Exposure Guidance v06
- FCC KDB 648474 D04 SAR Evaluation Considerations for Wireless Handsets v01r03
- FCC KDB 248227 D01 802.11 Wi-Fi SAR v02r02
- FCC KDB 941225 D01 3G SAR Procedures v03r01
- FCC KDB 941225 D05 SAR for LTE Devices v02r05
- FCC KDB 941225 D06 Hotspot Mode SAR v02r01



4. Equipment Under Test (EUT) Information

4.1 General Information

Product Feature & Specification	
Equipment Name	Rugged Smart Phone
Brand Name	CAT
Model Name	S31
FCC ID	ZL5S31A
IMEI Code	SIM 1: 352399090000274 SIM 2: 352399090000282
Wireless Technology and Frequency Range	GSM850: 824.2 MHz ~ 848.8 MHz GSM1900: 1850.2 MHz ~ 1909.8 MHz WCDMA Band II: 1852.4 MHz ~ 1907.6 MHz WCDMA Band IV: 1712.4 MHz ~ 1752.6 MHz WCDMA Band V: 826.4 MHz ~ 846.6 MHz LTE Band 2: 1850.7 MHz ~ 1909.3 MHz LTE Band 4: 1710.7 MHz ~ 1754.3 MHz LTE Band 5: 824.7 MHz ~ 848.3 MHz LTE Band 7: 2502.5 MHz ~ 2567.5 MHz WLAN 2.4GHz Band: 2412 MHz ~ 2462 MHz Bluetooth: 2402 MHz ~ 2480 MHz
Mode	GSM/GPRS/EGPRS/DTM RMC/AMR 12.2Kbps HSDPA HSUPA DC-HSDPA LTE: QPSK, 16QAM WLAN 2.4GHz : 802.11b/g/n HT20 Bluetooth BR/EDR/LE
GSM / (E)GPRS Dual Transfer mode	Class A – EUT can support Packet Switched and Circuit Switched Network simultaneously.
EUT Stage	Identical Prototype
Remark: 1. This device WLAN 2.4GHz supports Hotspot operation and Bluetooth support tethering applications.	

<Sample Information>

S31 has 2 different Variant	
Sample 1	Dual SIM
Sample 2	Single SIM
Remark: 1. For Dual-SIM or Single-SIM control by SW. The HW difference is SIM holder. 2. Sample1 has 2 SIM slots and supports Dual SIM Dual Standby. The WWAN radio transmission will be enabled by either one SIM at a time (Single active).	

Remark: All the test were performed with Sample 1.



4.2 General LTE SAR Test and Reporting Considerations

Summarized necessary items addressed in KDB 941225 D05 v02r05																																							
FCC ID	ZL5S31A																																						
Equipment Name	Rugged Smart Phone																																						
Operating Frequency Range of each LTE transmission band	LTE Band 2: 1850.7 MHz ~ 1909.3 MHz LTE Band 4: 1710.7 MHz ~ 1754.3 MHz LTE Band 5: 824.7 MHz ~ 848.3 MHz LTE Band 7: 2502.5 MHz ~ 2567.5 MHz																																						
Channel Bandwidth	LTE Band 02:1.4MHz, 3MHz, 5MHz, 10MHz, 15MHz, 20MHz LTE Band 04:1.4MHz, 3MHz, 5MHz, 10MHz, 15MHz, 20MHz LTE Band 05:1.4MHz, 3MHz, 5MHz, 10MHz LTE Band 07: 5MHz, 10MHz, 15MHz, 20MHz																																						
uplink modulations used	QPSK / 16QAM																																						
LTE Voice / Data requirements	Voice and Data																																						
LTE MPR permanently built-in by design	<p align="center">Table 6.2.3-1: Maximum Power Reduction (MPR) for Power Class 3</p> <table border="1"> <thead> <tr> <th rowspan="2">Modulation</th> <th colspan="6">Channel bandwidth / Transmission bandwidth (RB)</th> <th rowspan="2">MPR (dB)</th> </tr> <tr> <th>1.4 MHz</th> <th>3.0 MHz</th> <th>5 MHz</th> <th>10 MHz</th> <th>15 MHz</th> <th>20 MHz</th> </tr> </thead> <tbody> <tr> <td>QPSK</td> <td>>5</td> <td>>4</td> <td>>8</td> <td>>12</td> <td>>16</td> <td>>18</td> <td>≤ 1</td> </tr> <tr> <td>16 QAM</td> <td>≤ 5</td> <td>≤ 4</td> <td>≤ 8</td> <td>≤ 12</td> <td>≤ 16</td> <td>≤ 18</td> <td>≤ 1</td> </tr> <tr> <td>16 QAM</td> <td>>5</td> <td>>4</td> <td>>8</td> <td>>12</td> <td>>16</td> <td>>18</td> <td>≤ 2</td> </tr> </tbody> </table>	Modulation	Channel bandwidth / Transmission bandwidth (RB)						MPR (dB)	1.4 MHz	3.0 MHz	5 MHz	10 MHz	15 MHz	20 MHz	QPSK	>5	>4	>8	>12	>16	>18	≤ 1	16 QAM	≤ 5	≤ 4	≤ 8	≤ 12	≤ 16	≤ 18	≤ 1	16 QAM	>5	>4	>8	>12	>16	>18	≤ 2
Modulation	Channel bandwidth / Transmission bandwidth (RB)						MPR (dB)																																
	1.4 MHz	3.0 MHz	5 MHz	10 MHz	15 MHz	20 MHz																																	
QPSK	>5	>4	>8	>12	>16	>18	≤ 1																																
16 QAM	≤ 5	≤ 4	≤ 8	≤ 12	≤ 16	≤ 18	≤ 1																																
16 QAM	>5	>4	>8	>12	>16	>18	≤ 2																																
LTE A-MPR	In the base station simulator configuration, Network Setting value is set to NS_01 to disable A-MPR during SAR testing and the LTE SAR tests was transmitting on all TTI frames (Maximum TTI)																																						
Spectrum plots for RB configuration	A properly configured base station simulator was used for the SAR and power measurement; therefore, spectrum plots for each RB allocation and offset configuration are not included in the SAR report.																																						

Transmission (H, M, L) channel numbers and frequencies in each LTE band												
LTE Band 2												
	Bandwidth 1.4 MHz		Bandwidth 3 MHz		Bandwidth 5 MHz		Bandwidth 10 MHz		Bandwidth 15 MHz		Bandwidth 20 MHz	
	Ch. #	Freq. (MHz)	Ch. #	Freq. (MHz)	Ch. #	Freq. (MHz)	Ch. #	Freq. (MHz)	Ch. #	Freq. (MHz)	Ch. #	Freq. (MHz)
L	18607	1850.7	18615	1851.5	18625	1852.5	18650	1855	18675	1857.5	18700	1860
M	18900	1880	18900	1880	18900	1880	18900	1880	18900	1880	18900	1880
H	19193	1909.3	19185	1908.5	19175	1907.5	19150	1905	19125	1902.5	19100	1900
LTE Band 4												
	Bandwidth 1.4 MHz		Bandwidth 3 MHz		Bandwidth 5 MHz		Bandwidth 10 MHz		Bandwidth 15 MHz		Bandwidth 20 MHz	
	Ch. #	Freq. (MHz)	Ch. #	Freq. (MHz)	Ch. #	Freq. (MHz)	Ch. #	Freq. (MHz)	Ch. #	Freq. (MHz)	Ch. #	Freq. (MHz)
L	19957	1710.7	19965	1711.5	19975	1712.5	20000	1715	20025	1717.5	20050	1720
M	20175	1732.5	20175	1732.5	20175	1732.5	20175	1732.5	20175	1732.5	20175	1732.5
H	20393	1754.3	20385	1753.5	20375	1752.5	20350	1750	20325	1747.5	20300	1745
LTE Band 5												
	Bandwidth 1.4 MHz		Bandwidth 3 MHz		Bandwidth 5 MHz		Bandwidth 10 MHz					
	Ch. #	Freq. (MHz)	Ch. #	Freq. (MHz)	Ch. #	Freq. (MHz)	Ch. #	Freq. (MHz)	Ch. #	Freq. (MHz)	Ch. #	Freq. (MHz)
L	20407	824.7	20415	825.5	20425	826.5	20450	829				
M	20525	836.5	20525	836.5	20525	836.5	20525	836.5				
H	20643	848.3	20635	847.5	20625	846.5	20600	844				
LTE Band 7												
	Bandwidth 5 MHz		Bandwidth 10 MHz		Bandwidth 15 MHz		Bandwidth 20 MHz					
	Ch. #	Freq. (MHz)	Ch. #	Freq. (MHz)	Ch. #	Freq. (MHz)	Ch. #	Freq. (MHz)	Ch. #	Freq. (MHz)	Ch. #	Freq. (MHz)
L	20775	2502.5	20800	2505	20825	2507.5	20850	2510				
M	21100	2535	21100	2535	21100	2535	21100	2535				
H	21425	2567.5	21400	2565	21375	2562.5	21350	2560				



5. RF Exposure Limits

5.1 Uncontrolled Environment

Uncontrolled Environments are defined as locations where there is the exposure of individuals who have no knowledge or control of their exposure. The general population/uncontrolled exposure limits are applicable to situations in which the general public may be exposed or in which persons who are exposed as a consequence of their employment may not be made fully aware of the potential for exposure or cannot exercise control over their exposure. Members of the general public would come under this category when exposure is not employment-related; for example, in the case of a wireless transmitter that exposes persons in its vicinity.

5.2 Controlled Environment

Controlled Environments are defined as locations where there is exposure that may be incurred by persons who are aware of the potential for exposure, (i.e. as a result of employment or occupation). In general, occupational/controlled exposure limits are applicable to situations in which persons are exposed as a consequence of their employment, who have been made fully aware of the potential for exposure and can exercise control over their exposure. The exposure category is also applicable when the exposure is of a transient nature due to incidental passage through a location where the exposure levels may be higher than the general population/uncontrolled limits, but the exposed person is fully aware of the potential for exposure and can exercise control over his or her exposure by leaving the area or by some other appropriate means.

Limits for Occupational/Controlled Exposure (W/kg)

Whole-Body	Partial-Body	Hands, Wrists, Feet and Ankles
0.4	8.0	20.0

Limits for General Population/Uncontrolled Exposure (W/kg)

Whole-Body	Partial-Body	Hands, Wrists, Feet and Ankles
0.08	1.6	4.0

1. Whole-Body SAR is averaged over the entire body, partial-body SAR is averaged over any 1gram of tissue defined as a tissue volume in the shape of a cube. SAR for hands, wrists, feet and ankles is averaged over any 10 grams of tissue defined as a tissue volume in the shape of a cube.



6. Specific Absorption Rate (SAR)

6.1 Introduction

SAR is related to the rate at which energy is absorbed per unit mass in an object exposed to a radio field. The SAR distribution in a biological body is complicated and is usually carried out by experimental techniques or numerical modeling. The standard recommends limits for two tiers of groups, occupational/controlled and general population/uncontrolled, based on a person's awareness and ability to exercise control over his or her exposure. In general, occupational/controlled exposure limits are higher than the limits for general population/uncontrolled.

6.2 SAR Definition

The SAR definition is the time derivative (rate) of the incremental energy (dW) absorbed by (dissipated in) an incremental mass (dm) contained in a volume element (dv) of a given density (ρ). The equation description is as below:

$$SAR = \frac{d}{dt} \left(\frac{dW}{dm} \right) = \frac{d}{dt} \left(\frac{dW}{\rho dv} \right)$$

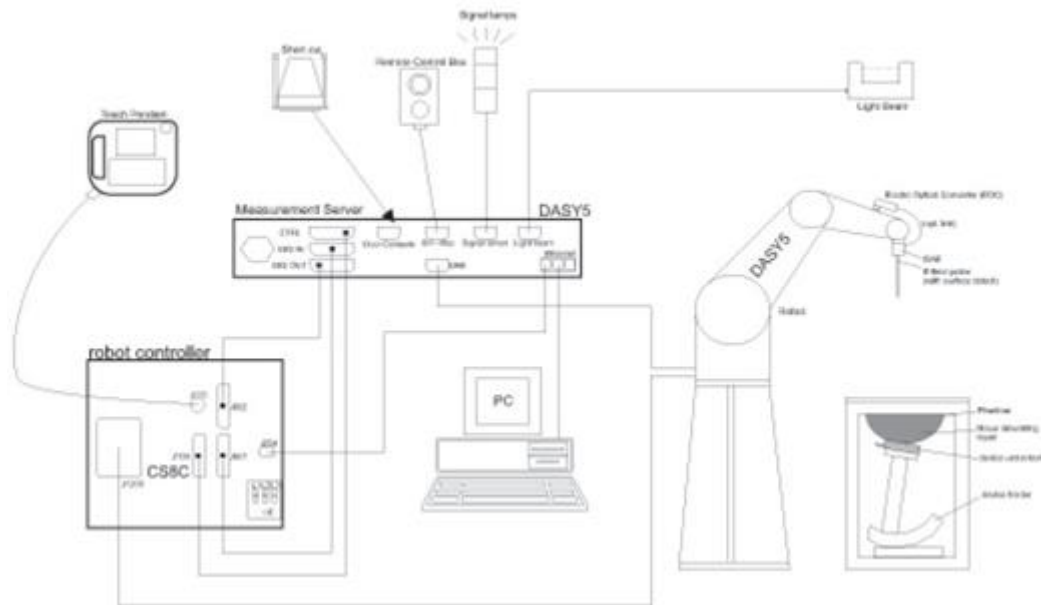
SAR is expressed in units of Watts per kilogram (W/kg)

$$SAR = \frac{\sigma |E|^2}{\rho}$$

Where: σ is the conductivity of the tissue, ρ is the mass density of the tissue and E is the RMS electrical field strength.

7. System Description and Setup

The DASY system used for performing compliance tests consists of the following items:




- A standard high precision 6-axis robot with controller, teach pendant and software. An arm extension for accommodating the data acquisition electronics (DAE).
- An isotropic Field probe optimized and calibrated for the targeted measurement.
- A data acquisition electronics (DAE) which performs the signal amplification, signal multiplexing, AD-conversion, offset measurements, mechanical surface detection, collision detection, etc. The unit is battery powered with standard or rechargeable batteries. The signal is optically transmitted to the EOC.
- The Electro-optical converter (EOC) performs the conversion from optical to electrical signals for the digital communication to the DAE. To use optical surface detection, a special version of the EOC is required. The EOC signal is transmitted to the measurement server.
- The function of the measurement server is to perform the time critical tasks such as signal filtering, control of the robot operation and fast movement interrupts.
- The Light Beam used is for probe alignment. This improves the (absolute) accuracy of the probe positioning.
- A computer running WinXP or Win7 and the DASY5 software.
- Remote control and teach pendant as well as additional circuitry for robot safety such as warning lamps, etc.
- The phantom, the device holder and other accessories according to the targeted measurement.


7.1 E-Field Probe

The SAR measurement is conducted with the dosimetric probe (manufactured by SPEAG). The probe is specially designed and calibrated for use in liquid with high permittivity. The dosimetric probe has special calibration in liquid at different frequency. This probe has a built in optical surface detection system to prevent from collision with phantom.

<ES3DV3 Probe>

Construction	Symmetric design with triangular core Interleaved sensors Built-in shielding against static charges PEEK enclosure material (resistant to organic solvents, e.g., DGBE)	
Frequency	10 MHz – 4 GHz; Linearity: ± 0.2 dB (30 MHz – 4 GHz)	
Directivity	± 0.2 dB in TSL (rotation around probe axis) ± 0.3 dB in TSL (rotation normal to probe axis)	
Dynamic Range	5 μ W/g – >100 mW/g; Linearity: ± 0.2 dB	
Dimensions	Overall length: 337 mm (tip: 20 mm) Tip diameter: 3.9 mm (body: 12 mm) Distance from probe tip to dipole centers: 3.0 mm	

<EX3DV4 Probe>

Construction	Symmetric design with triangular core Built-in shielding against static charges PEEK enclosure material (resistant to organic solvents, e.g., DGBE)	
Frequency	10 MHz – >6 GHz Linearity: ± 0.2 dB (30 MHz – 6 GHz)	
Directivity	± 0.3 dB in TSL (rotation around probe axis) ± 0.5 dB in TSL (rotation normal to probe axis)	
Dynamic Range	10 μ W/g – >100 mW/g Linearity: ± 0.2 dB (noise: typically <1 μ W/g)	
Dimensions	Overall length: 337 mm (tip: 20 mm) Tip diameter: 2.5 mm (body: 12 mm) Typical distance from probe tip to dipole centers: 1 mm	

7.2 Data Acquisition Electronics (DAE)

The data acquisition electronics (DAE) consists of a highly sensitive electrometer-grade preamplifier with auto-zeroing, a channel and gain-switching multiplexer, a fast 16 bit AD-converter and a command decoder and control logic unit. Transmission to the measurement server is accomplished through an optical downlink for data and status information as well as an optical uplink for commands and the clock.


The input impedance of the DAE is 200 MOhm; the inputs are symmetrical and floating. Common mode rejection is above 80 dB.



Fig 5.1 Photo of DAE

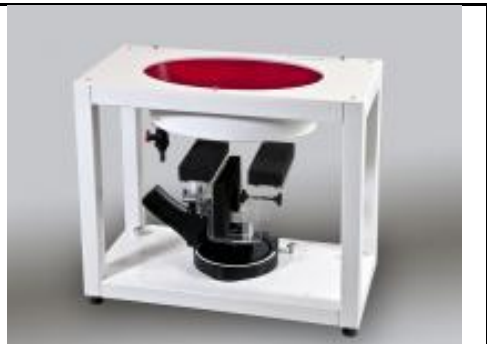
7.3 Phantom

<SAM Twin Phantom>

Shell Thickness	2 ± 0.2 mm; Center ear point: 6 ± 0.2 mm	
Filling Volume	Approx. 25 liters	
Dimensions	Length: 1000 mm; Width: 500 mm; Height: adjustable feet	
Measurement Areas	Left Hand, Right Hand, Flat Phantom	

The bottom plate contains three pair of bolts for locking the device holder. The device holder positions are adjusted to the standard measurement positions in the three sections. A white cover is provided to tap the phantom during off-periods to prevent water evaporation and changes in the liquid parameters. On the phantom top, three reference markers are provided to identify the phantom position with respect to the robot.

<ELI Phantom>

Shell Thickness	2 ± 0.2 mm (sagging: <1%)	
Filling Volume	Approx. 30 liters	
Dimensions	Major ellipse axis: 600 mm Minor axis: 400 mm	

The ELI phantom is intended for compliance testing of handheld and body-mounted wireless devices in the frequency range of 30 MHz to 6 GHz. ELI4 is fully compatible with standard and all known tissue simulating liquids.

7.4 Device Holder

<Mounting Device for Hand-Held Transmitter>

In combination with the Twin SAM V5.0/V5.0c or ELI phantoms, the Mounting Device for Hand-Held Transmitters enables rotation of the mounted transmitter device to specified spherical coordinates. At the heads, the rotation axis is at the ear opening. Transmitter devices can be easily and accurately positioned according to IEC 62209-1, IEEE 1528, FCC, or other specifications. The device holder can be locked for positioning at different phantom sections (left head, right head, flat). And upgrade kit to Mounting Device to enable easy mounting of wider devices like big smart-phones, e-books, small tablets, etc. It holds devices with width up to 140 mm.



Mounting Device for Hand-Held Transmitters



Mounting Device Adaptor for Wide-Phones

<Mounting Device for Laptops and other Body-Worn Transmitters>

The extension is lightweight and made of POM, acrylic glass and foam. It fits easily on the upper part of the mounting device in place of the phone positioned. The extension is fully compatible with the SAM Twin and ELI phantoms.



Mounting Device for Laptops

8. Measurement Procedures

The measurement procedures are as follows:

<Conducted power measurement>

- (a) For WWAN power measurement, use base station simulator to configure EUT WWAN transmission in conducted connection with RF cable, at maximum power in each supported wireless interface and frequency band.
- (b) Read the WWAN RF power level from the base station simulator.
- (c) For WLAN/BT power measurement, use engineering software to configure EUT WLAN/BT continuously transmission, at maximum RF power in each supported wireless interface and frequency band
- (d) Connect EUT RF port through RF cable to the power meter, and measure WLAN/BT output power

<SAR measurement>

- (a) Use base station simulator to configure EUT WWAN transmission in radiated connection, and engineering software to configure EUT WLAN/BT continuously transmission, at maximum RF power, in the highest power channel.
- (b) Place the EUT in the positions as Appendix D demonstrates.
- (c) Set scan area, grid size and other setting on the DASY software.
- (d) Measure SAR results for the highest power channel on each testing position.
- (e) Find out the largest SAR result on these testing positions of each band
- (f) Measure SAR results for other channels in worst SAR testing position if the reported SAR of highest power channel is larger than 0.8 W/kg

According to the test standard, the recommended procedure for assessing the peak spatial-average SAR value consists of the following steps:

- (a) Power reference measurement
- (b) Area scan
- (c) Zoom scan
- (d) Power drift measurement

8.1 Spatial Peak SAR Evaluation

The procedure for spatial peak SAR evaluation has been implemented according to the test standard. It can be conducted for 1g and 10g, as well as for user-specific masses. The DASY software includes all numerical procedures necessary to evaluate the spatial peak SAR value.

The base for the evaluation is a "cube" measurement. The measured volume must include the 1g and 10g cubes with the highest averaged SAR values. For that purpose, the center of the measured volume is aligned to the interpolated peak SAR value of a previously performed area scan.

The entire evaluation of the spatial peak values is performed within the post-processing engine (SEMCAD). The system always gives the maximum values for the 1g and 10g cubes. The algorithm to find the cube with highest averaged SAR is divided into the following stages:

- (a) Extraction of the measured data (grid and values) from the Zoom Scan
- (b) Calculation of the SAR value at every measurement point based on all stored data (A/D values and measurement parameters)
- (c) Generation of a high-resolution mesh within the measured volume
- (d) Interpolation of all measured values from the measurement grid to the high-resolution grid
- (e) Extrapolation of the entire 3-D field distribution to the phantom surface over the distance from sensor to surface
- (f) Calculation of the averaged SAR within masses of 1g and 10g

8.2 Power Reference Measurement

The Power Reference Measurement and Power Drift Measurements are for monitoring the power drift of the device under test in the batch process. The minimum distance of probe sensors to surface determines the closest measurement point to phantom surface. This distance cannot be smaller than the distance of sensor calibration points to probe tip as defined in the probe properties.

8.3 Area Scan

The area scan is used as a fast scan in two dimensions to find the area of high field values, before doing a fine measurement around the hot spot. The sophisticated interpolation routines implemented in DASY software can find the maximum found in the scanned area, within a range of the global maximum. The range (in dB0 is specified in the standards for compliance testing. For example, a 2 dB range is required in IEEE standard 1528 and IEC 62209 standards, whereby 3 dB is a requirement when compliance is assessed in accordance with the ARIB standard (Japan), if only one zoom scan follows the area scan, then only the absolute maximum will be taken as reference. For cases where multiple maximums are detected, the number of zoom scans has to be increased accordingly.

Area scan parameters extracted from FCC KDB 865664 D01v01r04 SAR measurement 100 MHz to 6 GHz.

	≤ 3 GHz	> 3 GHz
Maximum distance from closest measurement point (geometric center of probe sensors) to phantom surface	5 ± 1 mm	$\frac{1}{2} \cdot \delta \cdot \ln(2) \pm 0.5$ mm
Maximum probe angle from probe axis to phantom surface normal at the measurement location	30° ± 1°	20° ± 1°
Maximum area scan spatial resolution: $\Delta x_{Area}, \Delta y_{Area}$	≤ 2 GHz: ≤ 15 mm 2 – 3 GHz: ≤ 12 mm	3 – 4 GHz: ≤ 12 mm 4 – 6 GHz: ≤ 10 mm
	When the x or y dimension of the test device, in the measurement plane orientation, is smaller than the above, the measurement resolution must be ≤ the corresponding x or y dimension of the test device with at least one measurement point on the test device.	

8.4 Zoom Scan

Zoom scans are used assess the peak spatial SAR values within a cubic averaging volume containing 1 gram and 10 gram of simulated tissue. The zoom scan measures points (refer to table below) within a cube shoes base faces are centered on the maxima found in a preceding area scan job within the same procedure. When the measurement is done, the zoom scan evaluates the averaged SAR for 1 gram and 10 gram and displays these values next to the job's label.

Zoom scan parameters extracted from FCC KDB 865664 D01v01r04 SAR measurement 100 MHz to 6 GHz.

		≤ 3 GHz	> 3 GHz	
Maximum zoom scan spatial resolution: $\Delta x_{Zoom}, \Delta y_{Zoom}$		≤ 2 GHz: ≤ 8 mm 2 – 3 GHz: ≤ 5 mm*	3 – 4 GHz: ≤ 5 mm* 4 – 6 GHz: ≤ 4 mm*	
Maximum zoom scan spatial resolution, normal to phantom surface	uniform grid: $\Delta z_{Zoom}(n)$	≤ 5 mm	3 – 4 GHz: ≤ 4 mm 4 – 5 GHz: ≤ 3 mm 5 – 6 GHz: ≤ 2 mm	
	graded grid	$\Delta z_{Zoom}(1)$: between 1 st two points closest to phantom surface	≤ 4 mm	3 – 4 GHz: ≤ 3 mm 4 – 5 GHz: ≤ 2.5 mm 5 – 6 GHz: ≤ 2 mm
		$\Delta z_{Zoom}(n>1)$: between subsequent points	$\leq 1.5 \cdot \Delta z_{Zoom}(n-1)$	
Minimum zoom scan volume	x, y, z	≥ 30 mm	3 – 4 GHz: ≥ 28 mm 4 – 5 GHz: ≥ 25 mm 5 – 6 GHz: ≥ 22 mm	
Note: δ is the penetration depth of a plane-wave at normal incidence to the tissue medium; see draft standard IEEE P1528-2011 for details. * When zoom scan is required and the <i>reported</i> SAR from the <i>area scan based 1-g SAR estimation</i> procedures of KDB 447498 is ≤ 1.4 W/kg, ≤ 8 mm, ≤ 7 mm and ≤ 5 mm zoom scan resolution may be applied, respectively, for 2 GHz to 3 GHz, 3 GHz to 4 GHz and 4 GHz to 6 GHz.				

8.5 Volume Scan Procedures

The volume scan is used for assess overlapping SAR distributions for antennas transmitting in different frequency bands. It is equivalent to an oversized zoom scan used in standalone measurements. The measurement volume will be used to enclose all the simultaneous transmitting antennas. For antennas transmitting simultaneously in different frequency bands, the volume scan is measured separately in each frequency band. In order to sum correctly to compute the 1g aggregate SAR, the EUT remain in the same test position for all measurements and all volume scan use the same spatial resolution and grid spacing. When all volume scan were completed, the software, SEMCAD postprocessor can combine and subsequently superpose these measurement data to calculating the multiband SAR.

8.6 Power Drift Monitoring

All SAR testing is under the EUT install full charged battery and transmit maximum output power. In DASy measurement software, the power reference measurement and power drift measurement procedures are used for monitoring the power drift of EUT during SAR test. Both these procedures measure the field at a specified reference position before and after the SAR testing. The software will calculate the field difference in dB. If the power drifts more than 5%, the SAR will be retested.



9. Test Equipment List

Manufacturer	Name of Equipment	Type/Model	Serial Number	Calibration	
				Last Cal.	Due Date
SPEAG	835MHz System Validation Kit	D835V2	499	Mar. 21, 2017	Mar. 20, 2018
SPEAG	1750MHz System Validation Kit	D1750V2	1068	Nov. 16, 2016	Nov. 15, 2017
SPEAG	1900MHz System Validation Kit	D1900V2	5d018	Jun. 28, 2017	Jun. 27, 2018
SPEAG	2450MHz System Validation Kit	D2450V2	735	Dec. 23, 2016	Dec. 22, 2017
SPEAG	2600MHz System Validation Kit	D2600V2	1058	Jun. 27, 2017	Jun. 26, 2018
SPEAG	Data Acquisition Electronics	DAE4	1399	Nov. 17, 2016	Nov. 16, 2017
SPEAG	Data Acquisition Electronics	DAE4	778	May. 22, 2017	May. 21, 2018
SPEAG	Data Acquisition Electronics	DAE4	916	Dec. 15, 2016	Dec. 14, 2017
SPEAG	Data Acquisition Electronics	DAE4	854	May. 02, 2017	May. 01, 2018
SPEAG	Dosimetric E-Field Probe	ES3DV3	3071	Dec. 08, 2016	Dec. 07, 2017
SPEAG	Dosimetric E-Field Probe	EX3DV4	3801	Jul. 13, 2017	Jul. 12, 2018
SPEAG	Dosimetric E-Field Probe	ES3DV3	3169	May. 11, 2017	May. 10, 2018
SPEAG	Dosimetric E-Field Probe	EX3DV4	7306	Jul. 24, 2017	Jul. 23, 2018
Gencom	Thermometer	TE1	TM685-1	Mar. 21, 2017	Mar. 20, 2018
Gencom	Thermometer	TE1	TM685-2	Mar. 21, 2017	Mar. 20, 2018
WonDer	Thermometer	WD-5016	TM642-1	Mar. 17, 2017	Mar. 16, 2018
WonDer	Thermometer	WD-5016	TM642-2	Mar. 17, 2017	Mar. 16, 2018
Anritsu	Radio Communication Analyzer	MT8821C	6201341950	Apr. 20, 2017	Apr. 19, 2018
Agilent	Wireless Communication Test Set	E5515C	MY50266977	May. 30, 2017	May. 29, 2018
R&S	BT Base Station	CBT32	100522	Mar. 14, 2017	Mar. 13, 2018
SPEAG	Device Holder	N/A	N/A	N/A	N/A
R&S	Signal Generator	SMA100A	101091	Jul. 06, 2017	Jul. 05, 2018
Agilent	ENA Network Analyzer	E5071C	MY46104758	Aug. 24, 2017	Aug. 23, 2018
SPEAG	Dielectric Probe Kit	DAK-3.5	1146	Jul. 18, 2017	Jul. 17, 2018
Anritsu	Power Meter	ML2495A	1419002	May. 15, 2017	May. 14, 2018
Anritsu	Power Sensor	MA2411B	1339124	May. 15, 2017	May. 14, 2018
Anritsu	Power Meter	ML2495A	1438002	Dec. 06, 2016	Dec. 05, 2017
Anritsu	Power Sensor	MA2411B	1339195	Dec. 06, 2016	Dec. 05, 2017
Agilent	Spectrum Analyzer	E4408B	MY44211028	Aug. 23, 2017	Aug. 22, 2018
Anritsu	Spectrum Analyzer	MS2830A	6201396378	Jun. 26, 2017	Jun. 25, 2018
Mini-Circuits	Power Amplifier	ZVE-8G+	D120604	Mar. 09, 2017	Mar. 08, 2018
Mini-Circuits	Power Amplifier	ZHL-42W+	QA1344002	Mar. 09, 2017	Mar. 08, 2018
ATM	Dual Directional Coupler	C122H-10	P610410z-02	Note 1	
Woken	Attenuator 1	WK0602-XX	N/A	Note 1	
PE	Attenuator 2	PE7005-10	N/A	Note 1	
PE	Attenuator 3	PE7005-3	N/A	Note 1	

General Note:

1. Prior to system verification and validation, the path loss from the signal generator to the system check source and the power meter, which includes the amplifier, cable, attenuator and directional coupler, was measured by the network analyzer. The reading of the power meter was offset by the path loss difference between the path to the power meter and the path to the system check source to monitor the actual power level fed to the system check source.

10. System Verification

10.1 Tissue Simulating Liquids

For the measurement of the field distribution inside the SAM phantom with DASY, the phantom must be filled with around 25 liters of homogeneous body tissue simulating liquid. For head SAR testing, the liquid height from the ear reference point (ERP) of the phantom to the liquid top surface is larger than 15 cm, which is shown in Fig. 10.1. For body SAR testing, the liquid height from the center of the flat phantom to the liquid top surface is larger than 15 cm, which is shown in Fig. 10.2.

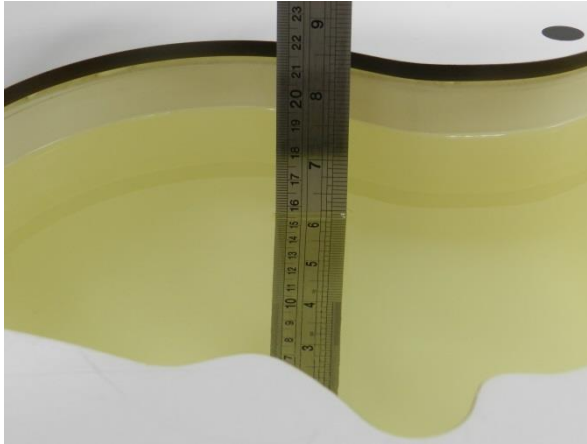


Fig 10.1 Photo of Liquid Height for Head SAR

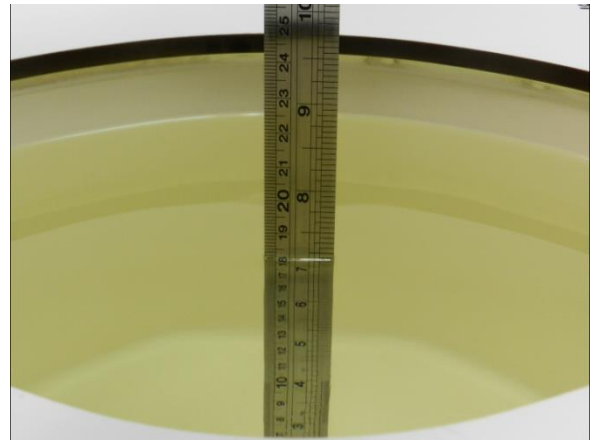


Fig 10.2 Photo of Liquid Height for Body SAR



10.2 Tissue Verification

The following tissue formulations are provided for reference only as some of the parameters have not been thoroughly verified. The composition of ingredients may be modified accordingly to achieve the desired target tissue parameters required for routine SAR evaluation.

Frequency (MHz)	Water (%)	Sugar (%)	Cellulose (%)	Salt (%)	Preventol (%)	DGBE (%)	Conductivity (σ)	Permittivity (ε _r)
For Head								
750	41.1	57.0	0.2	1.4	0.2	0	0.89	41.9
835	40.3	57.9	0.2	1.4	0.2	0	0.90	41.5
900	40.3	57.9	0.2	1.4	0.2	0	0.97	41.5
1800, 1900, 2000	55.2	0	0	0.3	0	44.5	1.40	40.0
2450	55.0	0	0	0	0	45.0	1.80	39.2
2600	54.8	0	0	0.1	0	45.1	1.96	39.0
For Body								
750	51.7	47.2	0	0.9	0.1	0	0.96	55.5
835	50.8	48.2	0	0.9	0.1	0	0.97	55.2
900	50.8	48.2	0	0.9	0.1	0	1.05	55.0
1800, 1900, 2000	70.2	0	0	0.4	0	29.4	1.52	53.3
2450	68.6	0	0	0	0	31.4	1.95	52.7
2600	68.1	0	0	0.1	0	31.8	2.16	52.5

Simulating Liquid for 5GHz, Manufactured by SPEAG

Ingredients	(% by weight)
Water	64~78%
Mineral oil	11~18%
Emulsifiers	9~15%
Additives and Salt	2~3%

<Tissue Dielectric Parameter Check Results>

Frequency (MHz)	Tissue Type	Liquid Temp. (°C)	Conductivity (σ)	Permittivity (ε _r)	Conductivity Target (σ)	Permittivity Target (ε _r)	Delta (σ) (%)	Delta (ε _r) (%)	Limit (%)	Date
835	HSL	22.4	0.901	43.180	0.90	41.50	0.11	4.05	±5	2017/9/26
835	MSL	22.4	1.001	56.556	0.97	55.20	3.20	2.46	±5	2017/9/25
1750	HSL	22.5	1.369	40.933	1.37	40.10	-0.07	2.08	±5	2017/9/26
1750	HSL	22.4	1.389	39.608	1.37	40.10	1.39	-1.23	±5	2017/9/27
1750	MSL	22.6	1.473	55.484	1.49	53.40	-1.14	3.90	±5	2017/9/22
1750	MSL	22.4	1.465	55.185	1.49	53.40	-1.68	3.34	±5	2017/9/25
1900	HSL	22.5	1.429	39.411	1.40	40.00	2.07	-1.47	±5	2017/9/26
1900	MSL	22.6	1.556	53.112	1.52	53.30	2.37	-0.35	±5	2017/9/22
1900	MSL	22.3	1.567	54.076	1.52	53.30	3.09	1.46	±5	2017/9/25
2450	HSL	22.4	1.794	39.865	1.80	39.20	-0.33	1.70	±5	2017/9/18
2450	HSL	22.6	1.806	40.017	1.80	39.20	0.33	2.08	±5	2017/9/27
2450	MSL	22.4	2.027	53.968	1.95	52.70	3.95	2.41	±5	2017/9/20
2600	HSL	22.5	1.959	39.343	1.96	39.00	-0.05	0.88	±5	2017/9/27
2600	MSL	22.5	2.207	51.724	2.16	52.50	2.18	-1.48	±5	2017/9/22
2600	MSL	22.4	2.216	53.283	2.16	52.50	2.59	1.49	±5	2017/9/26

10.3 System Performance Check Results

Comparing to the original SAR value provided by SPEAG, the verification data should be within its specification of 10 %. Below table shows the target SAR and measured SAR after normalized to 1W input power. The table below indicates the system performance check can meet the variation criterion and the plots can be referred to Appendix A of this report.

Date	Frequency (MHz)	Tissue Type	Input Power (mW)	Dipole S/N	Probe S/N	DAE S/N	Measured 1g SAR (W/kg)	Targeted 1g SAR (W/kg)	Normalized 1g SAR (W/kg)	Deviation (%)
2017/9/26	835	HSL	250	D835V2-499	EX3DV4 - SN7306	DAE4 Sn854	2.43	9.45	9.72	2.86
2017/9/25	835	MSL	250	D835V2-499	EX3DV4 - SN7306	DAE4 Sn854	2.26	9.67	9.04	-6.51
2017/9/26	1750	HSL	250	D1750V2-1068	ES3DV3 - SN3071	DAE4 Sn778	8.43	36.60	33.72	-7.87
2017/9/27	1750	HSL	250	D1750V2-1068	ES3DV3 - SN3169	DAE4 Sn1399	9.07	36.60	36.28	-0.87
2017/9/22	1750	MSL	250	D1750V2-1068	ES3DV3 - SN3071	DAE4 Sn778	9.18	36.20	36.72	1.44
2017/9/25	1750	MSL	250	D1750V2-1068	ES3DV3 - SN3071	DAE4 Sn778	9.34	36.20	37.36	3.20
2017/9/26	1900	HSL	250	D1900V2-5d018	ES3DV3 - SN3071	DAE4 Sn778	10.50	40.10	42.00	4.74
2017/9/22	1900	MSL	250	D1900V2-5d018	ES3DV3 - SN3071	DAE4 Sn778	10.50	40.60	42.00	3.45
2017/9/25	1900	MSL	250	D1900V2-5d018	ES3DV3 - SN3071	DAE4 Sn778	10.60	40.60	42.40	4.43
2017/9/18	2450	HSL	250	D2450V2-735	ES3DV3 - SN3169	DAE4 Sn1399	13.60	50.90	54.40	6.88
2017/9/27	2450	HSL	250	D2450V2-735	EX3DV4 - SN3801	DAE4 Sn916	12.40	50.90	49.60	-2.55
2017/9/20	2450	MSL	250	D2450V2-735	ES3DV3 - SN3169	DAE4 Sn1399	12.60	50.60	50.40	-0.40
2017/9/27	2600	HSL	250	D2600V2-1058	ES3DV3 - SN3169	DAE4 Sn1399	14.30	57.00	57.20	0.35
2017/9/22	2600	MSL	250	D2600V2-1058	ES3DV3 - SN3071	DAE4 Sn778	14.50	54.30	58.00	6.81
2017/9/26	2600	MSL	250	D2600V2-1058	ES3DV3 - SN3071	DAE4 Sn778	14.30	54.30	57.20	5.34

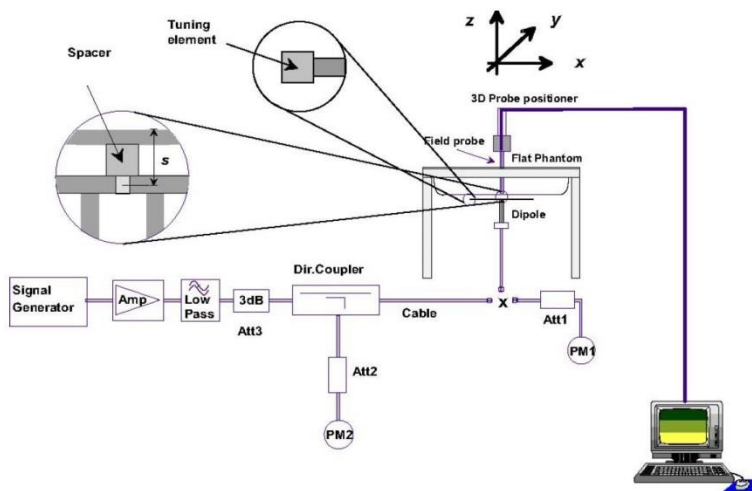


Fig 8.3.1 System Performance Check Setup



Fig 8.3.2 Setup Photo

11. RF Exposure Positions

11.1 Ear and handset reference point

Figure 9.1.1 shows the front, back, and side views of the SAM phantom. The center-of-mouth reference point is labeled “M,” the left ear reference point (ERP) is marked “LE,” and the right ERP is marked “RE.” Each ERP is 15 mm along the B-M (back-mouth) line behind the entrance-to-ear-canal (EEC) point, as shown in Figure 9.1.2 The Reference Plane is defined as passing through the two ear reference points and point M. The line N-F (neck-front), also called the reference pivoting line, is normal to the Reference Plane and perpendicular to both a line passing through RE and LE and the B-M line (see Figure 9.1.3). Both N-F and B-M lines should be marked on the exterior of the phantom shell to facilitate handset positioning. Posterior to the N-F line the ear shape is a flat surface with 6 mm thickness at each ERP, and forward of the N-F line the ear is truncated, as illustrated in Figure 9.1.2. The ear truncation is introduced to preclude the ear lobe from interfering with handset tilt, which could lead to unstable positioning at the cheek.

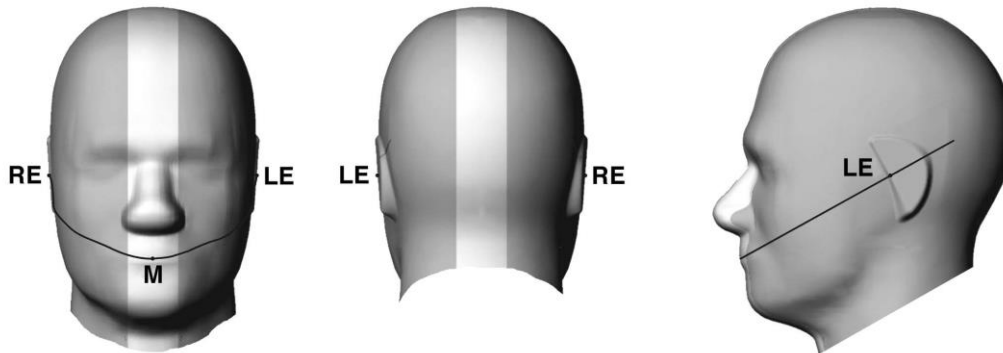


Fig 9.1.1 Front, back, and side views of SAM twin phantom

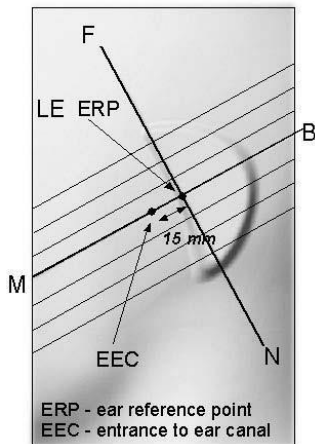


Fig 9.1.2 Close-up side view of phantom showing the ear region.

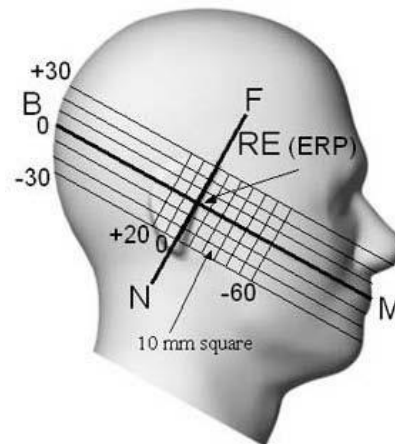


Fig 9.1.3 Side view of the phantom showing relevant markings and seven cross-sectional plane locations

11.2 Definition of the cheek position

1. Ready the handset for talk operation, if necessary. For example, for handsets with a cover piece (flip cover), open the cover. If the handset can transmit with the cover closed, both configurations must be tested.
2. Define two imaginary lines on the handset—the vertical centerline and the horizontal line. The vertical centerline passes through two points on the front side of the handset—the midpoint of the width w_t of the handset at the level of the acoustic output (point A in Figure 9.2.1 and Figure 9.2.2), and the midpoint of the width w_b of the bottom of the handset (point B). The horizontal line is perpendicular to the vertical centerline and passes through the center of the acoustic output (see Figure 9.2.1). The two lines intersect at point A. Note that for many handsets, point A coincides with the center of the acoustic output; however, the acoustic output may be located elsewhere on the horizontal line. Also note that the vertical centerline is not necessarily parallel to the front face of the handset (see Figure 9.2.2), especially for clamshell handsets, handsets with flip covers, and other irregularly-shaped handsets.
3. Position the handset close to the surface of the phantom such that point A is on the (virtual) extension of the line passing through points RE and LE on the phantom (see Figure 9.2.3), such that the plane defined by the vertical centerline and the horizontal line of the handset is approximately parallel to the sagittal plane of the phantom.
4. Translate the handset towards the phantom along the line passing through RE and LE until handset point A touches the pinna at the ERP.
5. While maintaining the handset in this plane, rotate it around the LE-RE line until the vertical centerline is in the plane normal to the plane containing B-M and N-F lines, i.e., the Reference Plane.
6. Rotate the handset around the vertical centerline until the handset (horizontal line) is parallel to the N-F line.
7. While maintaining the vertical centerline in the Reference Plane, keeping point A on the line passing through RE and LE, and maintaining the handset contact with the pinna, rotate the handset about the N-F line until any point on the handset is in contact with a phantom point below the pinna on the cheek. See Figure 9.2.3. The actual rotation angles should be documented in the test report.

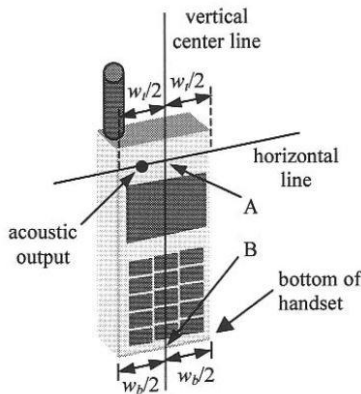


Fig 9.2.1 Handset vertical and horizontal reference lines—“fixed case”

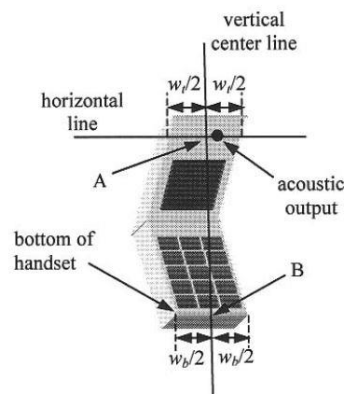


Fig 9.2.2 Handset vertical and horizontal reference lines—“clam-shell case”

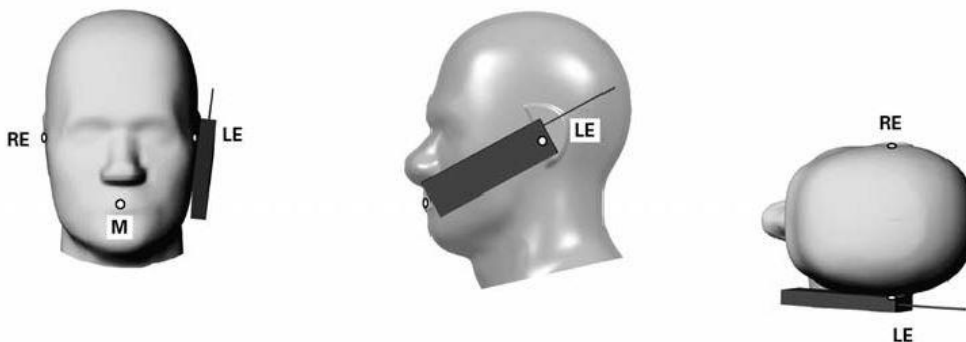


Fig 9.2.3 cheek or touch position. The reference points for the right ear (RE), left ear (LE), and mouth (M), which establish the Reference Plane for handset positioning, are indicated.

11.3 Definition of the tilt position

1. Ready the handset for talk operation, if necessary. For example, for handsets with a cover piece (flip cover), open the cover. If the handset can transmit with the cover closed, both configurations must be tested.
2. While maintaining the orientation of the handset, move the handset away from the pinna along the line passing through RE and LE far enough to allow a rotation of the handset away from the cheek by 15°.
3. Rotate the handset around the horizontal line by 15°.
4. While maintaining the orientation of the handset, move the handset towards the phantom on the line passing through RE and LE until any part of the handset touches the ear. The tilt position is obtained when the contact point is on the pinna. See Figure 9.3.1. If contact occurs at any location other than the pinna, e.g., the antenna at the back of the phantom head, the angle of the handset should be reduced. In this case, the tilt position is obtained if any point on the handset is in contact with the pinna and a second point

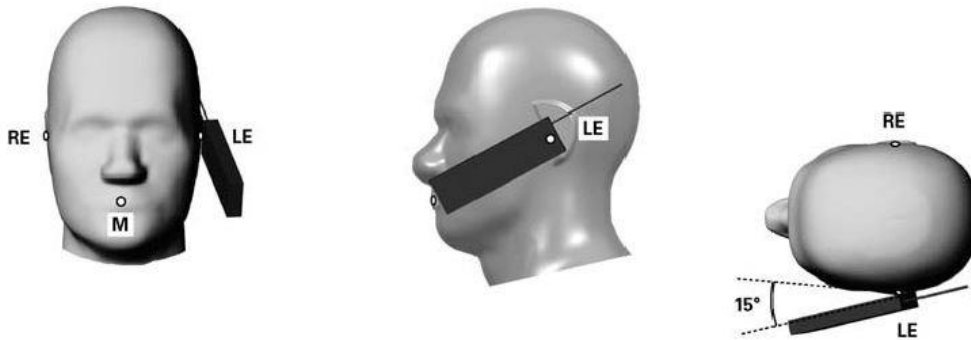


Fig 9.3.1 Tilt position. The reference points for the right ear (RE), left ear (LE), and mouth (M), which define the Reference Plane for handset positioning, are indicated.

11.4 Body Worn Accessory

Body-worn operating configurations are tested with the belt-clips and holsters attached to the device and positioned against a flat phantom in a normal use configuration (see Figure 9.4). Per KDB648474 D04v01r03, body-worn accessory exposure is typically related to voice mode operations when handsets are carried in body-worn accessories. The body-worn accessory procedures in FCC KDB 447498 D01v06 should be used to test for body-worn accessory SAR compliance, without a headset connected to it. This enables the test results for such configuration to be compatible with that required for hotspot mode when the body-worn accessory test separation distance is greater than or equal to that required for hotspot mode, when applicable. When the reported SAR for body-worn accessory, measured without a headset connected to the handset is > 1.2 W/kg, the highest reported SAR configuration for that wireless mode and frequency band should be repeated for that body-worn accessory with a headset attached to the handset.

Accessories for body-worn operation configurations are divided into two categories: those that do not contain metallic components and those that do contain metallic components. When multiple accessories that do not contain metallic components are supplied with the device, the device is tested with only the accessory that dictates the closest spacing to the body. Then multiple accessories that contain metallic components are test with the device with each accessory. If multiple accessories share an identical metallic component (i.e. the same metallic belt-clip used with different holsters with no other metallic components) only the accessory that dictates the closest spacing to the body is tested.

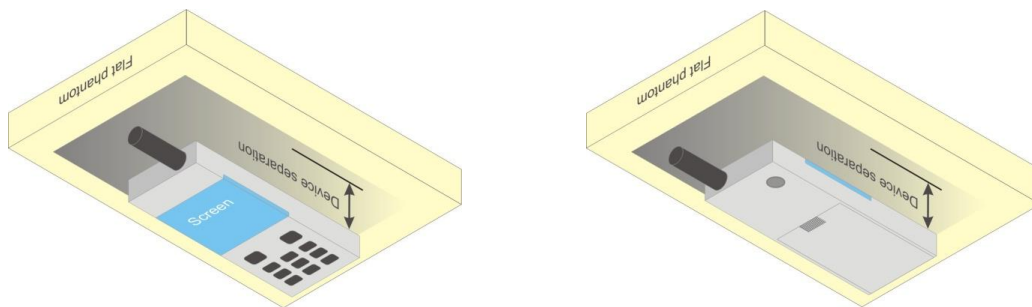


Fig 9.4 Body Worn Position

11.5 Wireless Router

Some battery-operated handsets have the capability to transmit and receive user through simultaneous transmission of WIFI simultaneously with a separate licensed transmitter. The FCC has provided guidance in FCC KDB Publication 941225 D06 v02r01 where SAR test considerations for handsets (L x W ≥ 9 cm x 5 cm) are based on a composite test separation distance of 10mm from the front, back and edges of the device containing transmitting antennas within 2.5cm of their edges, determined from general mixed use conditions for this type of devices. Since the hotspot SAR results may overlap with the body-worn accessory SAR requirements, the more conservative configurations can be considered, thus excluding some body-worn accessory SAR tests.

When the user enables the personal wireless router functions for the handset, actual operations include simultaneous transmission of both the WIFI transmitter and another licensed transmitter. Both transmitters often do not transmit at the same transmitting frequency and thus cannot be evaluated for SAR under actual use conditions due to the limitations of the SAR assessment probes. Therefore, SAR must be evaluated for each frequency transmission and mode separately and spatially summed with the WIFI transmitter according to FCC KDB Publication 447498 D01v06 publication procedures. The “Portable Hotspot” feature on the handset was NOT activated during SAR assessments, to ensure the SAR measurements were evaluated for a single transmission frequency RF signal at a time.

12. Conducted RF Output Power (Unit: dBm)

<GSM Conducted Power>

General Note:

- For DTM multi-slot class mode, the device was linked with base station simulator (Agilent E5515C) and transmit maximum power on maximum number of TX slots, i.e. one CS timeslot, and additional PS timeslots (1 for DTM class 5 and 9, 2 for DTM class 11) in one TDMA frame.
- Agilent E5515C was used to setup the device operated under DTM mode for power measurement and SAR testing. For conducted power, the power of the burst for voice and the power of the bursts for data was reported separately in the table above, and the frame-average power is derived below to determine SAR testing.

$$DTM \text{ frame average power (dBm)} = 10 * \log [\sum (\text{power of each slot, in mW}) / 8]$$

- Per KDB 447498 D01v06, the maximum output power channel is used for SAR testing and for further SAR test reduction.
- Per KDB 941225 D01v03r01, for SAR test reduction for GSM / GPRS / EDGE / DTM modes is determined by the source-based time-averaged output power including tune-up tolerance. The mode with highest specified time-averaged output power should be tested for SAR compliance in the applicable exposure conditions. For modes with the same specified maximum output power and tolerance, the higher number time-slot configuration should be tested. Therefore, the GPRS (4Tx slots) for GSM850/GSM1900 is considered as the primary mode.
- Other configurations of GSM / GPRS / EDGE / DTM are considered as secondary modes. The 3G SAR test reduction procedure is applied, when the maximum output power and tune-up tolerance specified for production units in a secondary mode is $\leq \frac{1}{4}$ dB higher than the primary mode, SAR measurement is not required for the secondary mode

GSM850		Burst Average Power (dBm)			Tune-up Limit (dBm)	Frame-Average Power (dBm)			Tune-up Limit (dBm)
TX Channel		128	189	251		128	189	251	
Frequency (MHz)		824.2	836.4	848.8		824.2	836.4	848.8	
GSM 1 Tx slot		32.16	32.28	32.30	33.00	23.16	23.28	23.30	24.00
GPRS 1 Tx slot		32.17	32.24	32.31	33.00	23.17	23.24	23.31	24.00
GPRS 2 Tx slots		29.80	29.86	29.92	31.00	23.80	23.86	23.92	25.00
GPRS 3 Tx slots		28.04	28.09	28.23	29.50	23.78	23.83	23.97	25.24
GPRS 4 Tx slots		26.90	27.00	27.09	28.50	23.90	24.00	24.09	25.50
EDGE 1 Tx slot		26.40	26.50	26.52	27.00	17.40	17.50	17.52	18.00
EDGE 2 Tx slots		25.24	25.40	25.36	27.00	19.24	19.40	19.36	21.00
EDGE 3 Tx slots		23.60	23.76	23.76	25.00	19.34	19.50	19.50	20.74
EDGE 4 Tx slots		22.00	22.13	22.16	23.50	19.00	19.13	19.16	20.50
DTM Multi-slot class 5	GSM 1 Tx slot	29.74	29.82	29.84	31.00	23.72	23.79	23.81	24.98
	GPRS 1 Tx slot	29.74	29.81	29.82	31.00				
DTM Multi-slot class 9	GSM 1 Tx slot	29.75	29.76	29.84	31.00	23.72	23.75	23.84	24.98
	GPRS 1 Tx slot	29.73	29.79	29.88	31.00				
DTM Multi-slot class 11	GSM 1 Tx slot	28.02	28.08	28.15	29.00	23.73	23.79	23.93	24.74
	GPRS 2 Tx slots	27.98	28.03	28.21	29.00				
DTM Multi-slot class 5	GSM 1 Tx slot	29.78	29.78	29.92	31.00	22.05	22.10	22.17	23.42
	EDGE 1 Tx slot	25.23	25.39	25.26	27.00				
DTM Multi-slot class 9	GSM 1 Tx slot	29.72	29.84	29.87	31.00	22.00	22.12	22.15	23.42
	EDGE 1 Tx slot	25.18	25.30	25.33	27.00				
DTM Multi-slot class 11	GSM 1 Tx slot	28.02	28.03	28.19	29.00	21.35	21.41	21.51	22.51
	EDGE 2 Tx slots	23.59	23.73	23.75	25.00				



GSM1900		Burst Average Power (dBm)			Tune-up Limit (dBm)	Frame-Average Power (dBm)			Tune-up Limit (dBm)
TX Channel		512	661	810		512	661	810	
Frequency (MHz)		1850.2	1880	1909.8		1850.2	1880	1909.8	
GSM 1 Tx slot		29.48	29.37	29.50	30.00	20.48	20.37	20.50	21.00
GPRS 1 Tx slot		29.51	29.68	29.46	30.00	20.51	20.68	20.46	21.00
GPRS 2 Tx slots		26.97	27.20	27.01	28.00	20.97	21.20	21.01	22.00
GPRS 3 Tx slots		25.37	25.81	25.62	26.00	21.11	21.55	21.36	21.74
GPRS 4 Tx slots		24.25	24.67	24.49	25.00	21.25	21.67	21.49	22.00
EDGE 1 Tx slot		25.68	25.80	25.88	26.00	16.68	16.80	16.88	17.00
EDGE 2 Tx slots		24.56	24.70	24.77	26.00	18.56	18.70	18.77	20.00
EDGE 3 Tx slots		23.01	23.07	23.18	24.00	18.75	18.81	18.92	19.74
EDGE 4 Tx slots		21.48	21.47	21.59	23.00	18.48	18.47	18.59	20.00
DTM Multi-slot class 5	GSM 1 Tx slot	26.93	27.19	27.01	28.00	20.88	21.17	20.95	21.98
	GPRS 1 Tx slot	26.88	27.19	26.93	28.00				
DTM Multi-slot class 9	GSM 1 Tx slot	26.97	27.19	26.95	28.00	20.93	21.15	20.95	21.98
	GPRS 1 Tx slot	26.93	27.15	27.00	28.00				
DTM Multi-slot class 11	GSM 1 Tx slot	25.33	25.80	25.60	26.00	21.08	21.55	21.35	21.74
	GPRS 2 Tx slots	25.34	25.81	25.62	26.00				
DTM Multi-slot class 5	GSM 1 Tx slot	26.92	26.85	26.93	28.00	19.90	19.88	19.97	21.09
	EDGE 1 Tx slot	24.62	24.68	24.79	26.00				
DTM Multi-slot class 9	GSM 1 Tx slot	26.91	27.10	26.95	28.00	19.86	20.02	19.96	21.09
	EDGE 1 Tx slot	24.52	24.63	24.73	26.00				
DTM Multi-slot class 11	GSM 1 Tx slot	25.35	25.79	25.62	26.00	19.78	19.89	19.88	20.51
	EDGE 2 Tx slots	23.20	23.01	23.16	24.00				

<WCDMA Conducted Power>

1. The following tests were conducted according to the test requirements outlines in 3GPP TS 34.121 specification.
2. The procedures in KDB 941225 D01v03r01 are applied for 3GPP Rel. 6 HSPA to configure the device in the required sub-test mode(s) to determine SAR test exclusion.
3. For DC-HSDPA, the device was configured according to the H-Set 12, Fixed Reference Channel (FRC) configuration in Table C.8.1.12 of 3GPP TS 34.121-1, with the primary and the secondary serving HS-DSCH Cell enabled during the power measurement.

A summary of these settings are illustrated below:

HSDPA Setup Configuration:

- a. The EUT was connected to Base Station Agilent E5515C referred to the Setup Configuration.
- b. The RF path losses were compensated into the measurements.
- c. A call was established between EUT and Base Station with following setting:
 - i. Set Gain Factors (β_c and β_d) and parameters were set according to each
 - ii. Specific sub-test in the following table, C10.1.4, quoted from the TS 34.121
 - iii. Set RMC 12.2Kbps + HSDPA mode.
 - iv. Set Cell Power = -86 dBm
 - v. Set HS-DSCH Configuration Type to FRC (H-set 1, QPSK)
 - vi. Select HSDPA Uplink Parameters
 - vii. Set Delta ACK, Delta NACK and Delta CQI = 8
 - viii. Set Ack-Nack Repetition Factor to 3
 - ix. Set CQI Feedback Cycle (k) to 4 ms
 - x. Set CQI Repetition Factor to 2
 - xi. Power Ctrl Mode = All Up bits
- d. The transmitted maximum output power was recorded.

Table C.10.1.4: β values for transmitter characteristics tests with HS-DPCCH

Sub-test	β_c	β_d	β_d (SF)	β_c/β_d	β_{HS} (Note 1, Note 2)	CM (dB) (Note 3)	MPR (dB) (Note 3)
1	2/15	15/15	64	2/15	4/15	0.0	0.0
2	12/15 (Note 4)	15/15 (Note 4)	64	12/15 (Note 4)	24/15	1.0	0.0
3	15/15	8/15	64	15/8	30/15	1.5	0.5
4	15/15	4/15	64	15/4	30/15	1.5	0.5

Note 1: $\Delta_{ACK}, \Delta_{NACK}$ and $\Delta_{CQI} = 30/15$ with $\beta_{HS} = 30/15 * \beta_c$.

Note 2: For the HS-DPCCH power mask requirement test in clause 5.2C, 5.7A, and the Error Vector Magnitude (EVM) with HS-DPCCH test in clause 5.13.1A, and HSDPA EVM with phase discontinuity in clause 5.13.1AA, Δ_{ACK} and $\Delta_{NACK} = 30/15$ with $\beta_{HS} = 30/15 * \beta_c$, and $\Delta_{CQI} = 24/15$ with $\beta_{HS} = 24/15 * \beta_c$.

Note 3: CM = 1 for $\beta_c/\beta_d = 12/15, \beta_{HS}/\beta_c = 24/15$. For all other combinations of DPDCH, DPCCH and HS-DPCCH the MPR is based on the relative CM difference. This is applicable for only UEs that support HSDPA in release 6 and later releases.

Note 4: For subtest 2 the β_c/β_d ratio of 12/15 for the TFC during the measurement period (TF1, TF0) is achieved by setting the signalled gain factors for the reference TFC (TF1, TF1) to $\beta_c = 11/15$ and $\beta_d = 15/15$.

Setup Configuration

HSUPA Setup Configuration:

- a. The EUT was connected to Base Station Agilent E5515C referred to the Setup Configuration.
- b. The RF path losses were compensated into the measurements.
- c. A call was established between EUT and Base Station with following setting * :
 - i. Call Configs = 5.2B, 5.9B, 5.10B, and 5.13.2B with QPSK
 - ii. Set the Gain Factors (β_c and β_d) and parameters (AG Index) were set according to each specific sub-test in the following table, C11.1.3, quoted from the TS 34.121
 - iii. Set Cell Power = -86 dBm
 - iv. Set Channel Type = 12.2k + HSPA
 - v. Set UE Target Power
 - vi. Power Ctrl Mode= Alternating bits
 - vii. Set and observe the E-TFCl
 - viii. Confirm that E-TFCl is equal to the target E-TFCl of 75 for sub-test 1, and other subtest's E-TFCl
- d. The transmitted maximum output power was recorded.

Table C.11.1.3: β values for transmitter characteristics tests with HS-DPCCH and E-DCH

Sub-test	β_c	β_d	β_d (SF)	β_c/β_d	β_{HS} (Note1)	β_{ec}	β_{ed} (Note 4) (Note 5)	β_{ed} (SF)	β_{ed} (Codes)	CM (dB) (Note 2)	MPR (dB) (Note 2) (Note 6)	AG Index (Note 5)	E-TFCl
1	11/15 (Note 3)	15/15 (Note 3)	64	11/15 (Note 3)	22/15	209/25	1309/225	4	1	1.0	0.0	20	75
2	6/15	15/15	64	6/15	12/15	12/15	94/75	4	1	3.0	2.0	12	67
3	15/15	9/15	64	15/9	30/15	30/15	$\beta_{ed1}: 47/15$ $\beta_{ed2}: 47/15$	4 4	2	2.0	1.0	15	92
4	2/15	15/15	64	2/15	4/15	2/15	56/75	4	1	3.0	2.0	17	71
5	15/15	0	-	-	5/15	5/15	47/15	4	1	1.0	0.0	12	67

Note 1: For sub-test 1 to 4, Δ_{ACK} , Δ_{NACK} and $\Delta_{CQI} = 30/15$ with $\beta_{hs} = 30/15 * \beta_c$. For sub-test 5, Δ_{ACK} , Δ_{NACK} and $\Delta_{CQI} = 5/15$ with $\beta_{hs} = 5/15 * \beta_c$.

Note 2: CM = 1 for $\beta_c/\beta_d = 12/15$, $\beta_{hs}/\beta_c = 24/15$. For all other combinations of DPDCH, DPCCH, HS-DPCCH, E-DPDCH and E-DPCCH the MPR is based on the relative CM difference.

Note 3: For subtest 1 the β_c/β_d ratio of 11/15 for the TFC during the measurement period (TF1, TF0) is achieved by setting the signalled gain factors for the reference TFC (TF1, TF1) to $\beta_c = 10/15$ and $\beta_d = 15/15$.

Note 4: In case of testing by UE using E-DPDCH Physical Layer category 1, Sub-test 3 is omitted according to TS25.306 Table 5.1g.

Note 5: β_{ed} can not be set directly; it is set by Absolute Grant Value.

Note 6: For subtests 2, 3 and 4, UE may perform E-DPDCH power scaling at max power which could results in slightly smaller MPR values.

Setup Configuration

DC-HSDPA 3GPP release 8 Setup Configuration:

- a. The EUT was connected to Base Station Agilent E5515C referred to the Setup Configuration below
- b. The RF path losses were compensated into the measurements.
- c. A call was established between EUT and Base Station with following setting:
 - i. Set RMC 12.2Kbps + HSDPA mode.
 - ii. Set Cell Power = -25 dBm
 - iii. Set HS-DSCH Configuration Type to FRC (H-set 12, QPSK)
 - iv. Select HSDPA Uplink Parameters
 - v. Set Gain Factors (β_c and β_d) and parameters were set according to each Specific sub-test in the following table, C10.1.4, quoted from the TS 34.121
 - a). Subtest 1: $\beta_c/\beta_d=2/15$
 - b). Subtest 2: $\beta_c/\beta_d=12/15$
 - c). Subtest 3: $\beta_c/\beta_d=15/8$
 - d). Subtest 4: $\beta_c/\beta_d=15/4$
 - vi. Set Delta ACK, Delta NACK and Delta CQI = 8
 - vii. Set Ack-Nack Repetition Factor to 3
 - viii. Set CQI Feedback Cycle (k) to 4 ms
 - ix. Set CQI Repetition Factor to 2
 - x. Power Ctrl Mode = All Up bits
- d. The transmitted maximum output power was recorded.

The following tests were conducted according to the test requirements outlines in 3GPP TS 34.121 specification. A summary of these settings are illustrated below:

C.8.1.12 Fixed Reference Channel Definition H-Set 12

Table C.8.1.12: Fixed Reference Channel H-Set 12

Parameter	Unit	Value
Nominal Avg. Inf. Bit Rate	kbps	60
Inter-TTI Distance	TTI's	1
Number of HARQ Processes	Processes	6
Information Bit Payload (N_{INF})	Bits	120
Number Code Blocks	Blocks	1
Binary Channel Bits Per TTI	Bits	960
Total Available SML's in UE	SML's	19200
Number of SML's per HARQ Proc.	SML's	3200
Coding Rate		0.15
Number of Physical Channel Codes	Codes	1
Modulation		QPSK
Note 1: The RMC is intended to be used for DC-HSDPA mode and both cells shall transmit with identical parameters as listed in the table. Note 2: Maximum number of transmission is limited to 1, i.e., retransmission is not allowed. The redundancy and constellation version 0 shall be used.		

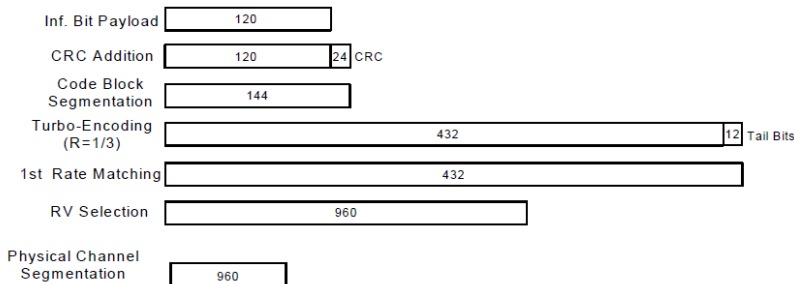


Figure C.8.19: Coding rate for Fixed reference Channel H-Set 12 (QPSK)

Setup Configuration



<WCDMA Conducted Power>

General Note:

1. Per KDB 941225 D01v03r01, for SAR testing is measured using a 12.2 kbps RMC with TPC bits configured to all "1's".
2. Per KDB 941225 D01v03r01, RMC 12.2kbps setting is used to evaluate SAR. The maximum output power and tune-up tolerance specified for production units in HSDPA / HSUPA / DC-HSDPA is $\leq \frac{1}{4}$ dB higher than RMC 12.2Kbps or when the highest reported SAR of the RMC12.2Kbps is scaled by the ratio of specified maximum output power and tune-up tolerance of HSDPA / HSUPA / DC-HSDPA to RMC12.2Kbps and the adjusted SAR is ≤ 1.2 W/kg, SAR measurement is not required for HSDPA / HSUPA / DC-HSDPA, and according to the following RF output power, the output power results of the secondary modes (HSUPA, HSDPA, DC-HSDPA) are less than $\frac{1}{4}$ dB higher than the primary modes; therefore, SAR measurement is not required for HSDPA / HSUPA / DC-HSDPA.

Band		WCDMA II			Tune-up Limit (dBm)	WCDMA IV			Tune-up Limit (dBm)	WCDMA V			Tune-up Limit (dBm)
TX Channel		9262	9400	9538		1312	1413	1513		4132	4182	4233	
Rx Channel		9662	9800	9938	1537	1638	1738	4357	4407	4458			
Frequency (MHz)		1852.4	1880	1907.6	1712.4	1732.6	1752.6	826.4	836.4	846.6			
3GPP Rel 99	AMR 12.2Kbps	22.71	22.78	22.73	23.00	23.73	23.57	23.60	24.00	23.48	23.52	23.56	24.00
3GPP Rel 99	RMC 12.2Kbps	22.72	22.79	22.75	23.00	23.89	23.74	23.79	24.00	23.50	23.59	23.58	24.00
3GPP Rel 6	HSDPA Subtest-1	21.81	21.85	21.98	22.00	22.74	22.74	22.76	23.00	22.89	22.95	22.89	23.00
3GPP Rel 6	HSDPA Subtest-2	21.87	21.88	22.00	22.00	22.78	22.74	22.85	23.00	22.95	23.00	22.91	23.00
3GPP Rel 6	HSDPA Subtest-3	21.37	21.34	21.50	21.50	22.28	22.27	22.37	22.50	22.47	22.46	22.42	22.50
3GPP Rel 6	HSDPA Subtest-4	21.38	21.38	21.50	21.50	22.28	22.28	22.38	22.50	22.50	22.47	22.43	22.50
3GPP Rel 8	DC-HSDPA Subtest-1	21.75	21.75	21.90	22.00	22.72	22.72	22.74	23.00	22.85	22.92	22.84	23.00
3GPP Rel 8	DC-HSDPA Subtest-2	21.81	21.83	21.91	22.00	22.74	22.64	22.83	23.00	22.88	22.95	22.88	23.00
3GPP Rel 8	DC-HSDPA Subtest-3	21.34	21.24	21.46	21.50	22.27	22.17	22.27	22.50	22.43	22.37	22.35	22.50
3GPP Rel 8	DC-HSDPA Subtest-4	21.36	21.31	21.50	21.50	22.26	22.26	22.37	22.50	22.46	22.44	22.43	22.50
3GPP Rel 6	HSUPA Subtest-1	21.37	22.00	21.97	22.00	23.00	22.83	23.00	23.00	22.95	22.16	22.99	23.00
3GPP Rel 6	HSUPA Subtest-2	20.96	20.68	21.00	21.00	21.75	21.44	21.57	22.00	21.57	21.55	21.76	22.00
3GPP Rel 6	HSUPA Subtest-3	20.65	20.81	20.83	21.00	21.64	21.54	21.59	22.00	21.57	21.58	21.56	22.00
3GPP Rel 6	HSUPA Subtest-4	21.29	21.41	21.43	21.50	22.24	22.10	22.16	22.50	22.13	21.76	21.86	22.50
3GPP Rel 6	HSUPA Subtest-5	21.90	22.00	22.00	22.00	23.00	22.90	22.90	23.00	22.90	22.90	23.00	23.00



<LTE Conducted Power>

General Note:

1. Anritsu MT8820C base station simulator was used to setup the connection with EUT; the frequency band, channel bandwidth, RB allocation configuration, modulation type are set in the base station simulator to configure EUT transmitting at maximum power and at different configurations which are requested to be reported to FCC, for conducted power measurement and SAR testing.
2. Per KDB 941225 D05v02r05, when a properly configured base station simulator is used for the SAR and power measurements, spectrum plots for each RB allocation and offset configuration is not required.
3. Per KDB 941225 D05v02r05, start with the largest channel bandwidth and measure SAR for QPSK with 1 RB allocation, using the RB offset and required test channel combination with the highest maximum output power for RB offsets at the upper edge, middle and lower edge of each required test channel.
4. Per KDB 941225 D05v02r05, 50% RB allocation for QPSK SAR testing follows 1RB QPSK allocation procedure.
5. Per KDB 941225 D05v02r05, For QPSK with 100% RB allocation, SAR is not required when the highest maximum output power for 100 % RB allocation is less than the highest maximum output power in 50% and 1 RB allocations and the highest reported SAR for 1 RB and 50% RB allocation are ≤ 0.8 W/kg. Otherwise, SAR is measured for the highest output power channel; and if the reported SAR is > 1.45 W/kg, the remaining required test channels must also be tested.
6. Per KDB 941225 D05v02r05, 16QAM output power for each RB allocation configuration is $>$ not $\frac{1}{2}$ dB higher than the same configuration in QPSK and the reported SAR for the QPSK configuration is ≤ 1.45 W/kg; Per KDB 941225 D05v02r05, 16QAM SAR testing is not required.
7. Per KDB 941225 D05v02r05, Smaller bandwidth output power for each RB allocation configuration is $>$ not $\frac{1}{2}$ dB higher than the same configuration in the largest supported bandwidth, and the reported SAR for the largest supported bandwidth is ≤ 1.45 W/kg; Per KDB 941225 D05v02r05, smaller bandwidth SAR testing is not required.
8. For LTE B4 / B5 the maximum bandwidth does not support three non-overlapping channels, per KDB 941225 D05v02r05, when a device supports overlapping channel assignment in a channel bandwidth configuration, the middle channel of the group of overlapping channels should be selected for testing.



<LTE Band 2>

BW [MHz]	Modulation	RB Size	RB Offset	Power Low Ch. / Freq.	Power Middle Ch. / Freq.	Power High Ch. / Freq.	Tune-up limit (dBm)	MPR (dB)
Channel				18700	18900	19100		
Frequency (MHz)				1860	1880	1900		
20	QPSK	1	0	23.84	23.76	23.80	24	0
20	QPSK	1	49	23.83	23.75	23.79		
20	QPSK	1	99	23.75	23.68	23.63		
20	QPSK	50	0	22.85	22.82	22.83	23	1
20	QPSK	50	24	22.79	22.78	22.79		
20	QPSK	50	50	22.78	22.66	22.76		
20	QPSK	100	0	22.80	22.71	22.78		
20	16QAM	1	0	22.83	22.95	22.92	23	1
20	16QAM	1	49	22.98	22.97	22.85		
20	16QAM	1	99	22.95	22.91	22.81		
20	16QAM	50	0	21.81	21.86	21.76	22	2
20	16QAM	50	24	21.85	21.75	21.82		
20	16QAM	50	50	21.97	21.68	21.74		
20	16QAM	100	0	21.83	21.74	21.87		
Channel				18675	18900	19125	Tune-up limit (dBm)	MPR (dB)
Frequency (MHz)				1857.5	1880	1902.5		
15	QPSK	1	0	23.75	23.72	23.69	24	0
15	QPSK	1	37	23.58	23.59	23.61		
15	QPSK	1	74	23.66	23.51	23.48		
15	QPSK	36	0	22.70	22.69	22.74	23	1
15	QPSK	36	20	22.67	22.62	22.63		
15	QPSK	36	39	22.76	22.60	22.70		
15	QPSK	75	0	22.76	22.68	22.76		
15	16QAM	1	0	22.79	22.99	22.92	23	1
15	16QAM	1	37	22.95	22.93	22.76		
15	16QAM	1	74	23.00	22.89	22.93		
15	16QAM	36	0	21.77	21.69	21.78	22	2
15	16QAM	36	20	21.60	21.63	21.67		
15	16QAM	36	39	21.73	21.62	21.73		
15	16QAM	75	0	21.64	21.72	21.70		
Channel				18650	18900	19150	Tune-up limit (dBm)	MPR (dB)
Frequency (MHz)				1855	1880	1905		
10	QPSK	1	0	23.67	23.78	23.73	24	0
10	QPSK	1	25	23.62	23.75	23.77		
10	QPSK	1	49	23.54	23.70	23.69		
10	QPSK	25	0	22.70	22.85	22.77	23	1
10	QPSK	25	12	22.76	22.85	22.70		
10	QPSK	25	25	22.59	22.57	22.64		
10	QPSK	50	0	22.65	22.79	22.70		
10	16QAM	1	0	22.78	22.98	22.81	23	1
10	16QAM	1	25	22.70	22.97	22.97		
10	16QAM	1	49	22.65	22.71	22.81		
10	16QAM	25	0	21.93	21.87	21.92	22	2
10	16QAM	25	12	21.97	21.87	21.94		
10	16QAM	25	25	21.86	21.82	21.71		
10	16QAM	50	0	21.86	21.76	21.83		



Channel				18625	18900	19175	Tune-up limit (dBm)	MPR (dB)
Frequency (MHz)				1852.5	1880	1907.5		
5	QPSK	1	0	23.61	23.56	23.46	24	0
5	QPSK	1	12	23.63	23.55	23.61		
5	QPSK	1	24	23.48	23.44	23.52		
5	QPSK	12	0	22.60	22.51	22.52	23	1
5	QPSK	12	7	22.63	22.58	22.60		
5	QPSK	12	13	22.66	22.59	22.64		
5	QPSK	25	0	22.64	22.58	22.55	23	1
5	16QAM	1	0	22.82	22.67	22.55		
5	16QAM	1	12	22.77	22.78	22.66		
5	16QAM	1	24	22.79	22.65	22.79	22	2
5	16QAM	12	0	21.41	21.53	21.55		
5	16QAM	12	7	21.40	21.54	21.65		
5	16QAM	12	13	21.63	21.63	21.67	22	2
5	16QAM	25	0	21.55	21.60	21.79		
5	16QAM	25	0	21.55	21.60	21.79		
Channel				18615	18900	19185	Tune-up limit (dBm)	MPR (dB)
Frequency (MHz)				1851.5	1880	1908.5		
3	QPSK	1	0	23.54	23.58	23.50	24	0
3	QPSK	1	8	23.56	23.55	23.50		
3	QPSK	1	14	23.59	23.45	23.46		
3	QPSK	8	0	22.70	22.47	22.60	23	1
3	QPSK	8	4	22.74	22.50	22.61		
3	QPSK	8	7	22.64	22.55	22.62		
3	QPSK	15	0	22.70	22.50	22.61	23	1
3	16QAM	1	0	22.75	22.53	22.60		
3	16QAM	1	8	22.86	22.69	22.52		
3	16QAM	1	14	22.79	22.66	22.49	22	2
3	16QAM	8	0	21.71	21.60	21.50		
3	16QAM	8	4	21.68	21.70	21.53		
3	16QAM	8	7	21.85	21.72	21.54	22	2
3	16QAM	8	7	21.85	21.72	21.54		
3	16QAM	15	0	21.81	21.60	21.58		
Channel				18607	18900	19193	Tune-up limit (dBm)	MPR (dB)
Frequency (MHz)				1850.7	1880	1909.3		
1.4	QPSK	1	0	23.50	23.61	23.57	24	0
1.4	QPSK	1	3	23.67	23.65	23.63		
1.4	QPSK	1	5	23.69	23.62	23.63		
1.4	QPSK	3	0	23.60	23.68	23.76		
1.4	QPSK	3	1	23.66	23.65	23.78		
1.4	QPSK	3	3	23.64	23.65	23.69	23	1
1.4	QPSK	6	0	22.55	22.58	22.67		
1.4	16QAM	1	0	22.87	22.86	22.66		
1.4	16QAM	1	3	22.98	23.00	22.76	23	1
1.4	16QAM	1	5	22.88	23.00	22.90		
1.4	16QAM	3	0	22.80	22.81	22.62		
1.4	16QAM	3	1	22.86	22.87	22.63		
1.4	16QAM	3	3	22.85	22.87	22.61		
1.4	16QAM	6	0	21.50	21.23	21.37	22	2



<LTE Band 4>

BW [MHz]	Modulation	RB Size	RB Offset	Power Low Ch. / Freq.	Power Middle Ch. / Freq.	Power High Ch. / Freq.	Tune-up limit (dBm)	MPR (dB)
Channel				20050	20175	20300		
Frequency (MHz)				1720	1732.5	1745		
20	QPSK	1	0	22.54	22.65	22.42	23	0
20	QPSK	1	49	22.51	22.64	22.27		
20	QPSK	1	99	22.19	22.25	22.24		
20	QPSK	50	0	21.55	21.51	21.56	22	1
20	QPSK	50	24	21.42	21.49	21.45		
20	QPSK	50	50	21.40	21.46	21.39		
20	QPSK	100	0	21.43	21.46	21.45		
20	16QAM	1	0	21.75	21.90	21.75	22	1
20	16QAM	1	49	21.47	21.76	21.98		
20	16QAM	1	99	21.38	21.72	21.59		
20	16QAM	50	0	20.43	20.53	20.50	21	2
20	16QAM	50	24	20.40	20.52	20.49		
20	16QAM	50	50	20.41	20.50	20.32		
20	16QAM	100	0	20.47	20.48	20.49		
Channel				20025	20175	20325		
Frequency (MHz)				1717.5	1732.5	1747.5		
15	QPSK	1	0	22.62	22.64	22.41	23	0
15	QPSK	1	37	22.40	22.33	22.41		
15	QPSK	1	74	22.36	22.33	22.35		
15	QPSK	36	0	21.50	21.48	21.46	22	1
15	QPSK	36	20	21.47	21.45	21.42		
15	QPSK	36	39	21.38	21.46	21.41		
15	QPSK	75	0	21.44	21.52	21.43		
15	16QAM	1	0	21.94	21.87	21.47	22	1
15	16QAM	1	37	21.46	21.48	21.21		
15	16QAM	1	74	21.64	21.42	21.29		
15	16QAM	36	0	20.49	20.41	20.50	21	2
15	16QAM	36	20	20.46	20.41	20.35		
15	16QAM	36	39	20.38	20.42	20.33		
15	16QAM	75	0	20.40	20.44	20.33		
Channel				20000	20175	20350		
Frequency (MHz)				1715	1732.5	1750		
10	QPSK	1	0	22.33	22.38	22.29	23	0
10	QPSK	1	25	22.60	22.56	22.45		
10	QPSK	1	49	22.45	22.43	22.33		
10	QPSK	25	0	21.50	21.48	21.40	22	1
10	QPSK	25	12	21.49	21.47	21.39		
10	QPSK	25	25	21.41	21.42	21.24		
10	QPSK	50	0	21.53	21.42	21.37		
10	16QAM	1	0	21.59	21.61	21.22	22	1
10	16QAM	1	25	22.00	21.87	21.43		
10	16QAM	1	49	21.75	21.47	21.11		
10	16QAM	25	0	20.54	20.53	20.58	21	2
10	16QAM	25	12	20.71	20.40	20.53		
10	16QAM	25	25	20.44	20.51	20.49		
10	16QAM	50	0	20.42	20.41	20.38		



Channel				19975	20175	20375	Tune-up limit (dBm)	MPR (dB)
Frequency (MHz)				1712.5	1732.5	1752.5		
5	QPSK	1	0	22.55	22.54	22.15	23	0
5	QPSK	1	12	22.57	22.56	22.13		
5	QPSK	1	24	22.49	22.53	22.28		
5	QPSK	12	0	21.44	21.44	21.20	22	1
5	QPSK	12	7	21.41	21.35	21.19		
5	QPSK	12	13	21.52	21.36	21.31		
5	QPSK	25	0	21.47	21.42	21.21	22	1
5	16QAM	1	0	21.51	21.67	21.68		
5	16QAM	1	12	21.51	21.56	21.69		
5	16QAM	1	24	21.85	21.93	21.57	21	2
5	16QAM	12	0	20.41	20.29	20.25		
5	16QAM	12	7	20.30	20.09	20.17		
5	16QAM	12	13	20.33	20.26	20.19	21	2
5	16QAM	25	0	20.50	20.38	20.43		
5	16QAM	25	0	20.50	20.38	20.43		
Channel				19965	20175	20385	Tune-up limit (dBm)	MPR (dB)
Frequency (MHz)				1711.5	1732.5	1753.5		
3	QPSK	1	0	22.57	22.38	22.31	23	0
3	QPSK	1	8	22.39	22.43	22.19		
3	QPSK	1	14	22.50	22.52	22.22		
3	QPSK	8	0	21.50	21.43	21.28	22	1
3	QPSK	8	4	21.43	21.54	21.34		
3	QPSK	8	7	21.50	21.44	21.41		
3	QPSK	15	0	21.34	21.46	21.35	22	1
3	16QAM	1	0	21.50	21.60	21.43		
3	16QAM	1	8	21.49	21.55	21.44		
3	16QAM	1	14	21.71	21.56	21.38	21	2
3	16QAM	8	0	20.57	20.13	20.22		
3	16QAM	8	4	20.51	20.14	20.22		
3	16QAM	8	7	20.58	20.18	20.11	21	2
3	16QAM	8	7	20.58	20.18	20.11		
3	16QAM	15	0	20.61	20.18	19.97		
Channel				19957	20175	20393	Tune-up limit (dBm)	MPR (dB)
Frequency (MHz)				1710.7	1732.5	1754.3		
1.4	QPSK	1	0	22.48	22.22	22.32	23	0
1.4	QPSK	1	3	22.46	22.37	22.40		
1.4	QPSK	1	5	22.53	22.48	22.30		
1.4	QPSK	3	0	22.60	22.45	22.33		
1.4	QPSK	3	1	22.52	22.56	22.48		
1.4	QPSK	3	3	22.52	22.51	22.49		
1.4	QPSK	6	0	21.34	21.49	21.42	22	1
1.4	16QAM	1	0	21.85	21.39	21.15	22	1
1.4	16QAM	1	3	21.95	21.26	21.31		
1.4	16QAM	1	5	21.86	21.23	21.23		
1.4	16QAM	3	0	21.63	21.14	21.22		
1.4	16QAM	3	1	21.70	21.61	21.41		
1.4	16QAM	3	3	21.65	21.37	21.41		
1.4	16QAM	6	0	20.95	20.39	19.98	21	2



<LTE Band 5>

BW [MHz]	Modulation	RB Size	RB Offset	Power Low Ch. / Freq.	Power Middle Ch. / Freq.	Power High Ch. / Freq.	Tune-up limit (dBm)	MPR (dB)
Channel				20450	20525	20600		
Frequency (MHz)				829	836.5	844		
10	QPSK	1	0	23.50	23.62	23.53	24	0
10	QPSK	1	25	23.39	23.19	23.54		
10	QPSK	1	49	23.15	23.21	23.38		
10	QPSK	25	0	22.39	22.51	22.33	23	1
10	QPSK	25	12	22.32	22.39	22.43		
10	QPSK	25	25	22.30	22.30	22.34		
10	QPSK	50	0	22.36	22.36	22.40		
10	16QAM	1	0	22.71	22.71	22.39	23	1
10	16QAM	1	25	22.63	22.84	22.57		
10	16QAM	1	49	22.11	22.43	22.50		
10	16QAM	25	0	21.43	21.43	21.40	22	2
10	16QAM	25	12	21.37	21.34	21.49		
10	16QAM	25	25	21.22	21.26	21.40		
10	16QAM	50	0	21.23	21.20	21.38		
Channel				20425	20525	20625		
Frequency (MHz)				826.5	836.5	846.5		
5	QPSK	1	0	23.23	23.45	23.31	24	0
5	QPSK	1	12	23.27	23.46	23.24		
5	QPSK	1	24	23.35	23.23	23.21		
5	QPSK	12	0	22.42	22.38	22.35	23	1
5	QPSK	12	7	22.37	22.32	22.36		
5	QPSK	12	13	22.35	22.31	22.38		
5	QPSK	25	0	22.37	22.39	22.36		
5	16QAM	1	0	22.57	22.50	22.71	23	1
5	16QAM	1	12	22.48	22.40	22.71		
5	16QAM	1	24	22.48	22.38	22.25		
5	16QAM	12	0	21.19	21.26	21.33	22	2
5	16QAM	12	7	21.27	21.18	21.31		
5	16QAM	12	13	21.20	21.16	21.35		
5	16QAM	25	0	21.26	21.21	21.52		
Channel				20415	20525	20635		
Frequency (MHz)				825.5	836.5	847.5		
3	QPSK	1	0	23.27	23.48	23.37	24	0
3	QPSK	1	8	23.44	23.23	23.30		
3	QPSK	1	14	23.47	23.35	23.39		
3	QPSK	8	0	22.39	22.42	22.41	23	1
3	QPSK	8	4	22.41	22.32	22.34		
3	QPSK	8	7	22.41	22.24	22.36		
3	QPSK	15	0	22.35	22.33	22.34		
3	16QAM	1	0	22.58	22.29	22.43	23	1
3	16QAM	1	8	22.63	22.06	22.58		
3	16QAM	1	14	22.59	22.54	22.41		
3	16QAM	8	0	21.62	21.51	21.22	22	2
3	16QAM	8	4	21.57	21.11	21.24		
3	16QAM	8	7	21.53	21.21	21.30		
3	16QAM	15	0	21.47	21.31	21.32		



Channel				20407	20525	20643	Tune-up limit (dBm)	MPR (dB)
Frequency (MHz)				824.7	836.5	848.3		
1.4	QPSK	1	0	23.30	23.20	23.26	24	0
1.4	QPSK	1	3	23.23	23.25	23.28		
1.4	QPSK	1	5	23.40	23.18	23.07		
1.4	QPSK	3	0	23.45	23.31	23.37		
1.4	QPSK	3	1	23.20	23.28	23.36		
1.4	QPSK	3	3	23.46	23.22	23.32		
1.4	QPSK	6	0	22.44	22.20	22.38	23	1
1.4	16QAM	1	0	22.29	22.31	22.35	23	1
1.4	16QAM	1	3	22.85	22.38	22.49		
1.4	16QAM	1	5	22.41	22.40	22.33		
1.4	16QAM	3	0	22.51	22.30	22.42		
1.4	16QAM	3	1	22.51	22.33	22.33		
1.4	16QAM	3	3	22.69	22.19	22.40		
1.4	16QAM	6	0	21.04	21.00	21.32	22	2



<LTE Band 7>

BW [MHz]	Modulation	RB Size	RB Offset	Power Low Ch. / Freq.	Power Middle Ch. / Freq.	Power High Ch. / Freq.	Tune-up limit (dBm)	MPR (dB)
Channel				20850	21100	21350		
Frequency (MHz)				2510	2535	2560		
20	QPSK	1	0	22.29	22.30	22.22	22.3	0
20	QPSK	1	49	22.09	22.27	22.21		
20	QPSK	1	99	21.95	22.12	21.95		
20	QPSK	50	0	21.24	21.28	21.27	21.3	1
20	QPSK	50	24	21.03	21.23	21.26		
20	QPSK	50	50	21.03	21.21	21.18		
20	QPSK	100	0	21.24	21.25	21.22		
20	16QAM	1	0	21.23	21.27	21.24	21.3	1
20	16QAM	1	49	21.18	21.25	21.22		
20	16QAM	1	99	21.16	21.21	21.09		
20	16QAM	50	0	20.16	20.22	20.21	20.3	2
20	16QAM	50	24	20.05	20.07	20.09		
20	16QAM	50	50	20.07	20.12	20.25		
20	16QAM	100	0	20.14	20.22	20.21		
Channel				20825	21100	21375		
Frequency (MHz)				2507.5	2535	2562.5		
15	QPSK	1	0	22.28	22.22	22.24	22.3	0
15	QPSK	1	37	22.15	22.23	22.07		
15	QPSK	1	74	22.09	22.18	21.99		
15	QPSK	36	0	21.21	21.28	21.29	21.3	1
15	QPSK	36	20	21.14	21.26	21.18		
15	QPSK	36	39	21.08	21.26	21.18		
15	QPSK	75	0	21.14	21.27	21.19	21.3	1
15	16QAM	1	0	21.25	21.26	21.24		
15	16QAM	1	37	20.76	21.12	21.20		
15	16QAM	1	74	21.12	21.26	21.28	20.3	2
15	16QAM	36	0	20.16	20.22	20.29		
15	16QAM	36	20	20.15	20.18	20.17		
15	16QAM	36	39	20.11	20.18	20.17		
15	16QAM	75	0	20.17	20.28	20.27		
Channel				20800	21100	21400		
Frequency (MHz)				2505	2535	2565		
10	QPSK	1	0	22.25	22.18	21.86	22.3	0
10	QPSK	1	25	22.21	22.24	22.16		
10	QPSK	1	49	22.04	22.04	21.82		
10	QPSK	25	0	21.18	21.23	21.19	21.3	1
10	QPSK	25	12	21.17	21.23	21.21		
10	QPSK	25	25	21.20	21.21	21.05		
10	QPSK	50	0	21.20	21.23	21.09	21.3	1
10	16QAM	1	0	21.24	21.22	20.92		
10	16QAM	1	25	21.27	21.26	21.17		
10	16QAM	1	49	21.22	21.30	21.13	20.3	2
10	16QAM	25	0	20.24	20.22	20.20		
10	16QAM	25	12	20.19	20.16	20.15		
10	16QAM	25	25	20.24	20.13	20.07		
10	16QAM	50	0	20.23	20.16	20.19		



Channel				20775	21100	21425	Tune-up limit (dBm)	MPR (dB)
Frequency (MHz)				2502.5	2535	2567.5		
5	QPSK	1	0	22.18	22.26	21.90	22.3	0
5	QPSK	1	12	22.21	22.26	22.12		
5	QPSK	1	24	22.17	22.18	21.89		
5	QPSK	12	0	21.27	21.23	21.23	21.3	1
5	QPSK	12	7	21.15	21.24	21.06		
5	QPSK	12	13	21.11	21.21	21.00		
5	QPSK	25	0	21.11	21.20	21.12		
5	16QAM	1	0	21.24	21.24	21.26	21.3	1
5	16QAM	1	12	21.18	21.29	21.08		
5	16QAM	1	24	21.23	21.30	21.26		
5	16QAM	12	0	20.23	20.30	20.18	20.3	2
5	16QAM	12	7	20.17	20.28	20.18		
5	16QAM	12	13	20.14	20.22	20.14		
5	16QAM	25	0	20.14	20.12	20.15		

<WLAN Conducted Power>

General Note:

1. Per KDB 248227 D01v02r02, SAR test reduction is determined according to 802.11 transmission mode configurations and certain exposure conditions with multiple test positions. In the 2.4 GHz band, separate SAR procedures are applied to DSSS and OFDM configurations to simplify DSSS test requirements. For OFDM, in both 2.4 and 5 GHz bands, an initial test configuration must be determined for each standalone and aggregated frequency band, according to the transmission mode configuration with the highest maximum output power specified for production units to perform SAR measurements. If the same highest maximum output power applies to different combinations of channel bandwidths, modulations and data rates, additional procedures are applied to determine which test configurations require SAR measurement. When applicable, an initial test position may be applied to reduce the number of SAR measurements required for next to the ear, UMPC mini-tablet or hotspot mode configurations with multiple test positions.
2. For 2.4 GHz 802.11b DSSS, either the initial test position procedure for multiple exposure test positions or the DSSS procedure for fixed exposure position is applied; these are mutually exclusive. For 2.4 GHz and 5 GHz OFDM configurations, the initial test configuration is applied to measure SAR using either the initial test position procedure for multiple exposure test position configurations or the initial test configuration procedures for fixed exposure test conditions. Based on the reported SAR of the measured configurations and maximum output power of the transmission mode configurations that are not included in the initial test configuration, the subsequent test configuration and initial test position procedures are applied to determine if SAR measurements are required for the remaining OFDM transmission configurations. In general, the number of test channels that require SAR measurement is minimized based on maximum output power measured for the test sample(s).
3. For OFDM transmission configurations in the 2.4 GHz and 5 GHz bands, When the same maximum power is specified for multiple transmission modes in a frequency band, the largest channel bandwidth, lowest order modulation, lowest data rate and lowest order 802.11a/g/n/ac mode is used for SAR measurement, on the highest measured output power channel for each frequency band.
4. DSSS and OFDM configurations are considered separately according to the required SAR procedures. SAR is measured in the initial test position using the 802.11 transmission mode configuration required by the DSSS procedure or initial test configuration and subsequent test configuration(s) according to the OFDM procedures.18 The initial test position procedure is described in the following:
 - a. When the reported SAR of the initial test position is ≤ 0.4 W/kg, further SAR measurement is not required for the other test positions in that exposure configuration and 802.11 transmission mode combinations within the frequency band or aggregated band.
 - b. When the reported SAR of the test position is > 0.4 W/kg, SAR is repeated for the 802.11 transmission mode configuration tested in the initial test position to measure the subsequent next closet/smallest test separation distance and maximum coupling test position on the highest maximum output power channel, until the report SAR is ≤ 0.8 W/kg or all required test position are tested.
 - c. For all positions/configurations, when the reported SAR is > 0.8 W/kg, SAR is measured for these test positions/configurations on the subsequent next highest measured output power channel(s) until the reported SAR is ≤ 1.2 W/kg or all required channels are tested.

<2.4GHz WLAN>

	Mode	Channel	Frequency (MHz)	Average power (dBm)	Tune-Up Limit	Duty Cycle %
2.4GHz WLAN	802.11b 1Mbps	1	2412	14.98	15.00	97.63
		6	2437	14.87	15.00	
		11	2462	14.97	15.00	
	802.11g 6Mbps	1	2412	12.76	13.00	86.71
		6	2437	12.82	13.00	
		11	2462	12.94	13.00	
	802.11n-HT20 MCS0	1	2412	11.73	12.00	85.96
		6	2437	11.91	12.00	
		11	2462	11.98	12.00	

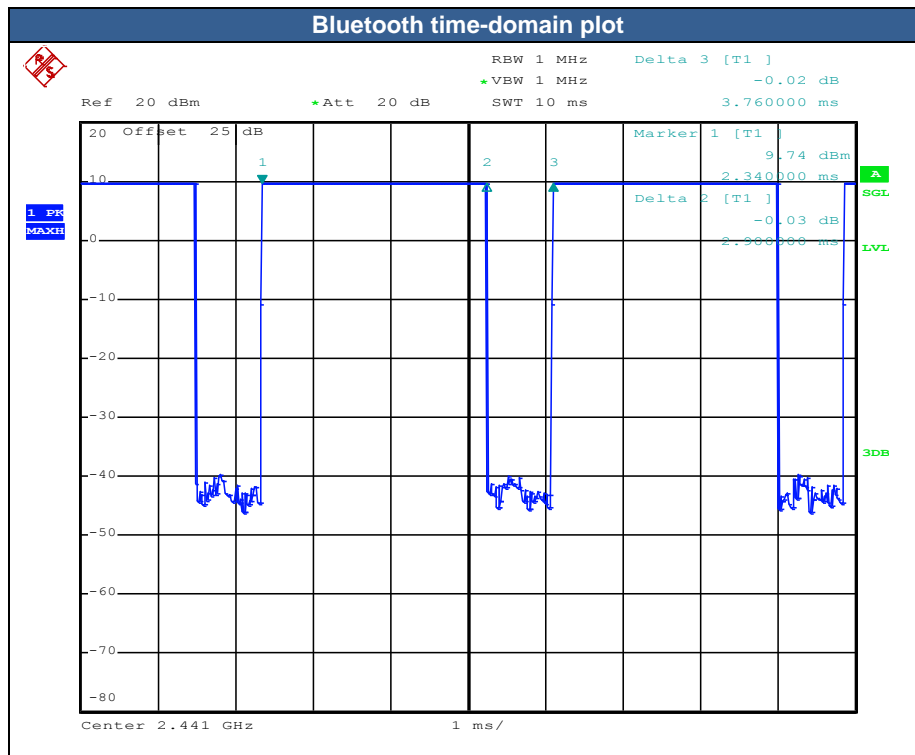
<2.4GHz Bluetooth>

Mode	Channel	Frequency (MHz)	Average power (dBm)		
			1Mbps	2Mbps	3Mbps
BR / EDR	CH 00	2402	9.96	8.72	8.74
	CH 39	2441	9.95	8.69	8.67
	CH 78	2480	9.26	8.01	7.98
Tune-up Limit			10	9	9

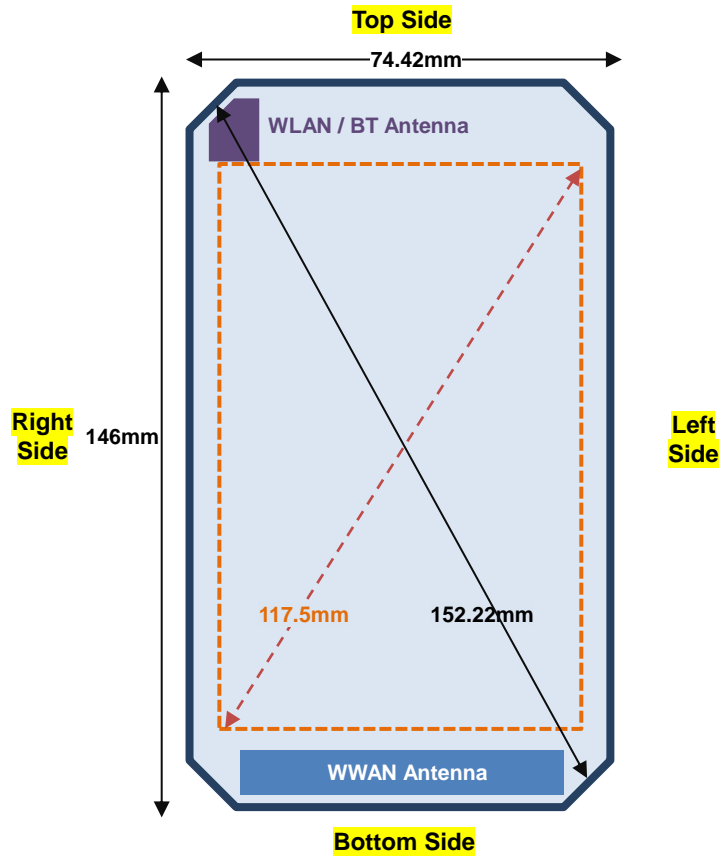
Mode	Channel	Frequency (MHz)	Average power (dBm)
			GFSK
LE	CH 00	2402	0.86
	CH 19	2440	1.04
	CH 39	2480	0.37
Tune-up Limit			1.5

General Note:

- For 2.4GHz Bluetooth SAR testing was selected 1Mbps, due to its highest average power.
- The Bluetooth duty cycle is 77.13 % as following figure, according to 2016 Oct. TCB workshop for Bluetooth SAR scaling need further consideration and the theoretical duty cycle is 83.3%, therefore the actual duty cycle will be scaled up to the theoretical value of Bluetooth reported SAR calculation



13. Antenna Location



Back View

Overall diagonal	152.22 mm
Display diagonal	117.5 mm

Distance of the Antenna to the EUT surface/edge						
Antennas	Back	Front	Top Side	Bottom Side	Right Side	Left Side
WWAN Main	≤ 25mm	≤ 25mm	>25mm	≤ 25mm	≤ 25mm	≤ 25mm
BT&WLAN	≤ 25mm	≤ 25mm	≤ 25mm	>25mm	≤ 25mm	>25mm

Positions for SAR tests; Hotspot mode						
Antennas	Back	Front	Top Side	Bottom Side	Right Side	Left Side
WWAN Main	Yes	Yes	No	Yes	Yes	Yes
BT&WLAN	Yes	Yes	Yes	No	Yes	No

General Note:

- Referring to KDB 941225 D06 v02r01, when the overall device length and width are ≥ 9cm*5cm, the test distance is 10 mm. SAR must be measured for all sides and surfaces with a transmitting antenna located within 25mm from that surface or edge



14. SAR Test Results

General Note:

1. Per KDB 447498 D01v06, the reported SAR is the measured SAR value adjusted for maximum tune-up tolerance.
 - a. Tune-up scaling Factor = tune-up limit power (mW) / EUT RF power (mW), where tune-up limit is the maximum rated power among all production units.
 - b. For SAR testing of WLAN signal with non-100% duty cycle, the measured SAR is scaled-up by the duty cycle scaling factor which is equal to "1/(duty cycle)"
 - c. For WWAN: Reported SAR(W/kg)= Measured SAR(W/kg)*Tune-up Scaling Factor
 - d. For WLAN/Bluetooth: Reported SAR(W/kg)= Measured SAR(W/kg)* Duty Cycle scaling factor * Tune-up scaling factor
2. Per KDB 447498 D01v06, for each exposure position, testing of other required channels within the operating mode of a frequency band is not required when the *reported* 1-g or 10-g SAR for the mid-band or highest output power channel is:
 - ≤ 0.8 W/kg or 2.0 W/kg, for 1-g or 10-g respectively, when the transmission band is ≤ 100 MHz
 - ≤ 0.6 W/kg or 1.5 W/kg, for 1-g or 10-g respectively, when the transmission band is between 100 MHz and 200 MHz
 - ≤ 0.4 W/kg or 1.0 W/kg, for 1-g or 10-g respectively, when the transmission band is ≥ 200 MHz
3. Per KDB 865664 D01v01r04, for each frequency band, repeated SAR measurement is required only when the measured SAR is ≥ 0.8 W/kg.
4. Per KDB 648474 D04v01r03, when the reported SAR for a body-worn accessory measured without a headset connected to the handset is ≤ 1.2 W/kg, SAR testing with a headset connected to the handset is not required.

GSM Note:

1. Per KDB 941225 D01v03r01, for SAR test reduction for GSM / GPRS / EDGE / DTM modes is determined by the source-based time-averaged output power including tune-up tolerance. The mode with highest specified time-averaged output power should be tested for SAR compliance in the applicable exposure conditions. For modes with the same specified maximum output power and tolerance, the higher number time-slot configuration should be tested. Therefore, the GPRS (4Tx slots) for GSM850/GSM1900 is considered as the primary mode.
2. Other configurations of GSM / GPRS / EDGE / DTM are considered as secondary modes. The 3G SAR test reduction procedure is applied, when the maximum output power and tune-up tolerance specified for production units in a secondary mode is $\leq \frac{1}{4}$ dB higher than the primary mode, SAR measurement is not required for the secondary mode.

UMTS Note:

1. Per KDB 941225 D01v03r01, for SAR testing is measured using a 12.2 kbps RMC with TPC bits configured to all "1's".
2. Per KDB 941225 D01v03r01, RMC 12.2kbps setting is used to evaluate SAR. The maximum output power and tune-up tolerance specified for production units in HSDPA / HSUPA / DC-HSDPA is $\leq \frac{1}{4}$ dB higher than RMC 12.2Kbps or when the highest reported SAR of the RMC12.2Kbps is scaled by the ratio of specified maximum output power and tune-up tolerance of HSDPA / HSUPA / DC-HSDPA to RMC12.2Kbps and the adjusted SAR is ≤ 1.2 W/kg, SAR measurement is not required for HSDPA / HSUPA / DC-HSDPA, and according to the following RF output power, the output power results of the secondary modes (HSUPA, HSDPA, DC-HSDPA) are less than $\frac{1}{4}$ dB higher than the primary modes; therefore, SAR measurement is not required for HSDPA / HSUPA / DC-HSDPA.



LTE Note:

1. Per KDB 941225 D05v02r05, start with the largest channel bandwidth and measure SAR for QPSK with 1 RB allocation, using the RB offset and required test channel combination with the highest maximum output power for RB offsets at the upper edge, middle and lower edge of each required test channel.
2. Per KDB 941225 D05v02r05, 50% RB allocation for QPSK SAR testing follows 1RB QPSK allocation procedure.
3. Per KDB 941225 D05v02r05, For QPSK with 100% RB allocation, SAR is not required when the highest maximum output power for 100 % RB allocation is less than the highest maximum output power in 50% and 1 RB allocations and the highest reported SAR for 1 RB and 50% RB allocation are ≤ 0.8 W/kg. Otherwise, SAR is measured for the highest output power channel; and if the reported SAR is > 1.45 W/kg, the remaining required test channels must also be tested.
4. Per KDB 941225 D05v02r05, 16QAM output power for each RB allocation configuration is $>$ not $\frac{1}{2}$ dB higher than the same configuration in QPSK and the reported SAR for the QPSK configuration is ≤ 1.45 W/kg; Per KDB 941225 D05v02r05, 16QAM SAR testing is not required.
5. Per KDB 941225 D05v02r05, Smaller bandwidth output power for each RB allocation configuration is $>$ not $\frac{1}{2}$ dB higher than the same configuration in the largest supported bandwidth, and the reported SAR for the largest supported bandwidth is ≤ 1.45 W/kg; Per KDB 941225 D05v02r05, smaller bandwidth SAR testing is not required.
6. For LTE B5 / B4 the maximum bandwidth does not support three non-overlapping channels, per KDB 941225 D05v02r05, when a device supports overlapping channel assignment in a channel bandwidth configuration, the middle channel of the group of overlapping channels should be selected for testing.

WLAN Note:

1. Per KDB 248227 D01v02r02, for 2.4GHz 802.11g/n SAR testing is not required when the highest reported SAR for DSSS is adjusted by the ratio of OFDM to DSSS specified maximum output power and the adjusted SAR is ≤ 1.2 W/kg.
2. When the reported SAR of the test position is > 0.4 W/kg, SAR is repeated for the 802.11 transmission mode configuration tested in the initial test position to measure the subsequent next closet/smallest test separation distance and maximum coupling test position on the highest maximum output power channel, until the report SAR is ≤ 0.8 W/kg or all required test position are tested.
3. For all positions / configurations, when the reported SAR is > 0.8 W/kg, SAR is measured for these test positions / configurations on the subsequent next highest measured output power channel(s) until the reported SAR is ≤ 1.2 W/kg or all required channels are tested.
4. During SAR testing the WLAN transmission was verified using a spectrum analyzer.



14.1 Head SAR

<GSM SAR>

Plot No.	Band	Mode	Test Position	Gap (mm)	Ch.	Freq. (MHz)	Average Power (dBm)	Tune-Up Limit (dBm)	Tune-up Scaling Factor	Power Drift (dB)	Measured 1g SAR (W/kg)	Reported 1g SAR (W/kg)
	GSM850	GPRS (4 Tx slots)	Right Cheek	0mm	251	848.8	27.09	28.50	1.384	-0.09	0.440	0.609
	GSM850	GPRS (4 Tx slots)	Right Tilted	0mm	251	848.8	27.09	28.50	1.384	-0.02	0.251	0.347
01	GSM850	GPRS (4 Tx slots)	Left Cheek	0mm	251	848.8	27.09	28.50	1.384	-0.01	0.563	0.779
	GSM850	GPRS (4 Tx slots)	Left Tilted	0mm	251	848.8	27.09	28.50	1.384	-0.04	0.272	0.376
	GSM1900	GPRS (4 Tx slots)	Right Cheek	0mm	661	1880	24.67	25.00	1.079	-0.07	0.271	0.292
	GSM1900	GPRS (4 Tx slots)	Right Tilted	0mm	661	1880	24.67	25.00	1.079	0	0.099	0.107
02	GSM1900	GPRS (4 Tx slots)	Left Cheek	0mm	661	1880	24.67	25.00	1.079	0.05	0.506	0.546
	GSM1900	GPRS (4 Tx slots)	Left Tilted	0mm	661	1880	24.67	25.00	1.079	0.04	0.094	0.101

<WCDMA SAR>

Plot No.	Band	Mode	Test Position	Gap (mm)	Ch.	Freq. (MHz)	Average Power (dBm)	Tune-Up Limit (dBm)	Tune-up Scaling Factor	Power Drift (dB)	Measured 1g SAR (W/kg)	Reported 1g SAR (W/kg)
	WCDMA II	RMC 12.2Kbps	Right Cheek	0mm	9400	1880	22.79	23.00	1.050	0.12	0.430	0.451
	WCDMA II	RMC 12.2Kbps	Right Tilted	0mm	9400	1880	22.79	23.00	1.050	0.02	0.180	0.189
	WCDMA II	RMC 12.2Kbps	Left Cheek	0mm	9400	1880	22.79	23.00	1.050	-0.07	0.821	0.862
	WCDMA II	RMC 12.2Kbps	Left Cheek	0mm	9262	1852.4	22.72	23.00	1.067	-0.15	0.741	0.790
03	WCDMA II	RMC 12.2Kbps	Left Cheek	0mm	9538	1907.6	22.75	23.00	1.059	0.08	0.860	0.911
	WCDMA II	RMC 12.2Kbps	Left Tilted	0mm	9400	1880	22.79	23.00	1.050	0.02	0.122	0.128
	WCDMA IV	RMC 12.2Kbps	Right Cheek	0mm	1312	1712.4	23.89	24.00	1.026	0.01	0.395	0.405
	WCDMA IV	RMC 12.2Kbps	Right Tilted	0mm	1312	1712.4	23.89	24.00	1.026	-0.06	0.257	0.264
04	WCDMA IV	RMC 12.2Kbps	Left Cheek	0mm	1312	1712.4	23.89	24.00	1.026	0.03	0.555	0.569
	WCDMA IV	RMC 12.2Kbps	Left Tilted	0mm	1312	1712.4	23.89	24.00	1.026	0.09	0.285	0.292
	WCDMA V	RMC 12.2Kbps	Right Cheek	0mm	4182	836.4	23.59	24.00	1.099	-0.12	0.428	0.470
	WCDMA V	RMC 12.2Kbps	Right Tilted	0mm	4182	836.4	23.59	24.00	1.099	-0.16	0.255	0.280
05	WCDMA V	RMC 12.2Kbps	Left Cheek	0mm	4182	836.4	23.59	24.00	1.099	-0.05	0.524	0.576
	WCDMA V	RMC 12.2Kbps	Left Tilted	0mm	4182	836.4	23.59	24.00	1.099	-0.03	0.279	0.307



<LTE SAR>

Plot No.	Band	BW (MHz)	Modulation	RB Size	RB offset	Test Position	Gap (mm)	Ch.	Freq. (MHz)	Average Power (dBm)	Tune-Up Limit (dBm)	Tune-up Scaling Factor	Power Drift (dB)	Measured 1g SAR (W/kg)	Reported 1g SAR (W/kg)
	LTE Band 2	20M	QPSK	1	0	Right Cheek	0mm	18700	1860	23.84	24.00	1.038	0.14	0.514	0.533
	LTE Band 2	20M	QPSK	50	0	Right Cheek	0mm	18700	1860	22.85	23.00	1.035	0.01	0.412	0.426
	LTE Band 2	20M	QPSK	1	0	Right Tilted	0mm	18700	1860	23.84	24.00	1.038	-0.11	0.203	0.211
	LTE Band 2	20M	QPSK	50	0	Right Tilted	0mm	18700	1860	22.85	23.00	1.035	-0.04	0.148	0.153
	LTE Band 2	20M	QPSK	1	0	Left Cheek	0mm	18700	1860	23.84	24.00	1.038	-0.05	0.892	0.925
06	LTE Band 2	20M	QPSK	1	0	Left Cheek	0mm	18900	1880	23.76	24.00	1.057	-0.13	0.981	1.037
	LTE Band 2	20M	QPSK	1	0	Left Cheek	0mm	19100	1900	23.80	24.00	1.047	-0.06	0.979	1.025
	LTE Band 2	20M	QPSK	50	0	Left Cheek	0mm	18700	1860	22.85	23.00	1.035	0.01	0.726	0.752
	LTE Band 2	20M	QPSK	100	0	Left Cheek	0mm	18700	1860	22.80	23.00	1.047	0.03	0.728	0.762
	LTE Band 2	20M	QPSK	1	0	Left Tilted	0mm	18700	1860	23.84	24.00	1.038	-0.09	0.232	0.241
	LTE Band 2	20M	QPSK	50	0	Left Tilted	0mm	18700	1860	22.85	23.00	1.035	0.08	0.175	0.181
	LTE Band 4	20M	QPSK	1	0	Right Cheek	0mm	20175	1732.5	22.65	23.00	1.084	-0.03	0.328	0.356
	LTE Band 4	20M	QPSK	50	0	Right Cheek	0mm	20175	1732.5	21.51	22.00	1.119	0	0.264	0.296
	LTE Band 4	20M	QPSK	1	0	Right Tilted	0mm	20175	1732.5	22.65	23.00	1.084	0.06	0.171	0.185
	LTE Band 4	20M	QPSK	50	0	Right Tilted	0mm	20175	1732.5	21.51	22.00	1.119	0.06	0.124	0.139
07	LTE Band 4	20M	QPSK	1	0	Left Cheek	0mm	20175	1732.5	22.65	23.00	1.084	0.11	0.432	0.468
	LTE Band 4	20M	QPSK	50	0	Left Cheek	0mm	20175	1732.5	21.51	22.00	1.119	0.16	0.335	0.375
	LTE Band 4	20M	QPSK	1	0	Left Tilted	0mm	20175	1732.5	22.65	23.00	1.084	0.07	0.220	0.238
	LTE Band 4	20M	QPSK	50	0	Left Tilted	0mm	20175	1732.5	21.51	22.00	1.119	0.05	0.172	0.193
	LTE Band 5	10M	QPSK	1	0	Right Cheek	0mm	20525	836.5	23.62	24.00	1.091	-0.04	0.423	0.462
	LTE Band 5	10M	QPSK	25	0	Right Cheek	0mm	20525	836.5	22.51	23.00	1.119	-0.04	0.336	0.376
	LTE Band 5	10M	QPSK	1	0	Right Tilted	0mm	20525	836.5	23.62	24.00	1.091	-0.12	0.262	0.286
	LTE Band 5	10M	QPSK	25	0	Right Tilted	0mm	20525	836.5	22.51	23.00	1.119	-0.07	0.218	0.244
08	LTE Band 5	10M	QPSK	1	0	Left Cheek	0mm	20525	836.5	23.62	24.00	1.091	-0.08	0.544	0.594
	LTE Band 5	10M	QPSK	25	0	Left Cheek	0mm	20525	836.5	22.51	23.00	1.119	-0.09	0.445	0.498
	LTE Band 5	10M	QPSK	1	0	Left Tilted	0mm	20525	836.5	23.62	24.00	1.091	0.16	0.279	0.305
	LTE Band 5	10M	QPSK	25	0	Left Tilted	0mm	20525	836.5	22.51	23.00	1.119	-0.12	0.227	0.254
	LTE Band 7	20M	QPSK	1	0	Right Cheek	0mm	21100	2535	22.30	22.30	1.000	0.11	0.217	0.217
	LTE Band 7	20M	QPSK	50	0	Right Cheek	0mm	21100	2535	21.28	21.30	1.005	-0.1	0.170	0.171
	LTE Band 7	20M	QPSK	1	0	Right Tilted	0mm	21100	2535	22.30	22.30	1.000	0.04	0.181	0.181
	LTE Band 7	20M	QPSK	50	0	Right Tilted	0mm	21100	2535	21.28	21.30	1.005	0.12	0.135	0.136
09	LTE Band 7	20M	QPSK	1	0	Left Cheek	0mm	21100	2535	22.30	22.30	1.000	-0.06	0.419	0.419
	LTE Band 7	20M	QPSK	50	0	Left Cheek	0mm	21100	2535	21.28	21.30	1.005	-0.13	0.315	0.316
	LTE Band 7	20M	QPSK	1	0	Left Tilted	0mm	21100	2535	22.30	22.30	1.000	0.16	0.114	0.114
	LTE Band 7	20M	QPSK	50	0	Left Tilted	0mm	21100	2535	21.28	21.30	1.005	0.07	0.088	0.088



<WLAN SAR>

Plot No.	Band	Mode	Test Position	Gap (mm)	Ch.	Freq. (MHz)	Average Power (dBm)	Tune-Up Limit (dBm)	Tune-up Scaling Factor	Duty Cycle %	Duty Cycle Scaling Factor	Power Drift (dB)	Measured 1g SAR (W/kg)	Reported 1g SAR (W/kg)
	WLAN2.4GHz	802.11b 1Mbps	Right Cheek	0mm	1	2412	14.98	15.00	1.005	97.63	1.024	-0.11	0.188	0.193
	WLAN2.4GHz	802.11b 1Mbps	Right Tilted	0mm	1	2412	14.98	15.00	1.005	97.63	1.024	-0.11	0.142	0.146
10	WLAN2.4GHz	802.11b 1Mbps	Left Cheek	0mm	1	2412	14.98	15.00	1.005	97.63	1.024	0.18	0.384	0.395
	WLAN2.4GHz	802.11b 1Mbps	Left Tilted	0mm	1	2412	14.98	15.00	1.005	97.63	1.024	0	0.209	0.215

<Bluetooth SAR>

Plot No.	Band	Mode	Test Position	Gap (mm)	Ch.	Freq. (MHz)	Average Power (dBm)	Tune-Up Limit (dBm)	Tune-up Scaling Factor	Duty Cycle %	Duty Cycle Scaling Factor	Power Drift (dB)	Measured 1g SAR (W/kg)	Reported 1g SAR (W/kg)
	Bluetooth	1Mbps	Right Cheek	0mm	0	2402	9.96	10.00	1.009	77.13	1.080	-0.07	0.027	0.029
	Bluetooth	1Mbps	Right Tilted	0mm	0	2402	9.96	10.00	1.009	77.13	1.080	-0.01	0.025	0.027
11	Bluetooth	1Mbps	Left Cheek	0mm	0	2402	9.96	10.00	1.009	77.13	1.080	-0.02	0.053	0.058
	Bluetooth	1Mbps	Left Tilted	0mm	0	2402	9.96	10.00	1.009	77.13	1.080	0.01	0.032	0.035



14.2 Hotspot SAR

<GSM SAR>

Plot No.	Band	Mode	Test Position	Gap (mm)	Ch.	Freq. (MHz)	Average Power (dBm)	Tune-Up Limit (dBm)	Tune-up Scaling Factor	Power Drift (dB)	Measured 1g SAR (W/kg)	Reported 1g SAR (W/kg)
	GSM850	GPRS (4 Tx slots)	Front	10mm	251	848.8	27.09	28.50	1.384	-0.06	0.573	0.793
12	GSM850	GPRS (4 Tx slots)	Back	10mm	251	848.8	27.09	28.50	1.384	-0.07	0.755	1.045
	GSM850	GPRS (4 Tx slots)	Back	10mm	128	824.2	26.90	28.50	1.445	0.11	0.645	0.932
	GSM850	GPRS (4 Tx slots)	Back	10mm	189	836.4	27.00	28.50	1.413	0.02	0.689	0.973
	GSM850	GPRS (4 Tx slots)	Left Side	10mm	251	848.8	27.09	28.50	1.384	-0.04	0.562	0.778
	GSM850	GPRS (4 Tx slots)	Right Side	10mm	251	848.8	27.09	28.50	1.384	-0.03	0.387	0.535
	GSM850	GPRS (4 Tx slots)	Bottom Side	10mm	251	848.8	27.09	28.50	1.384	-0.07	0.241	0.333
	GSM1900	GPRS (4 Tx slots)	Front	10mm	661	1880	24.67	25.00	1.079	-0.05	0.397	0.428
13	GSM1900	GPRS (4 Tx slots)	Back	10mm	661	1880	24.67	25.00	1.079	0.02	0.582	0.628
	GSM1900	GPRS (4 Tx slots)	Left Side	10mm	661	1880	24.67	25.00	1.079	0.1	0.281	0.303
	GSM1900	GPRS (4 Tx slots)	Right Side	10mm	661	1880	24.67	25.00	1.079	-0.13	0.066	0.071
	GSM1900	GPRS (4 Tx slots)	Bottom Side	10mm	661	1880	24.67	25.00	1.079	-0.06	0.112	0.121

<WCDMA SAR>

Plot No.	Band	Mode	Test Position	Gap (mm)	Ch.	Freq. (MHz)	Average Power (dBm)	Tune-Up Limit (dBm)	Tune-up Scaling Factor	Power Drift (dB)	Measured 1g SAR (W/kg)	Reported 1g SAR (W/kg)
	WCDMA II	RMC 12.2Kbps	Front	10mm	9400	1880	22.79	23.00	1.050	0	0.636	0.668
	WCDMA II	RMC 12.2Kbps	Back	10mm	9400	1880	22.79	23.00	1.050	0.01	1.000	1.050
	WCDMA II	RMC 12.2Kbps	Back	10mm	9262	1852.4	22.72	23.00	1.067	-0.11	0.941	1.004
14	WCDMA II	RMC 12.2Kbps	Back	10mm	9538	1907.6	22.75	23.00	1.059	-0.01	1.080	1.144
	WCDMA II	RMC 12.2Kbps	Left Side	10mm	9400	1880	22.79	23.00	1.050	0.03	0.485	0.509
	WCDMA II	RMC 12.2Kbps	Right Side	10mm	9400	1880	22.79	23.00	1.050	-0.08	0.107	0.112
	WCDMA II	RMC 12.2Kbps	Bottom Side	10mm	9400	1880	22.79	23.00	1.050	-0.09	0.200	0.210
	WCDMA IV	RMC 12.2Kbps	Front	10mm	1312	1712.4	23.89	24.00	1.026	0.03	0.670	0.687
	WCDMA IV	RMC 12.2Kbps	Back	10mm	1312	1712.4	23.89	24.00	1.026	0.01	1.090	1.118
	WCDMA IV	RMC 12.2Kbps	Back	10mm	1413	1732.6	23.74	24.00	1.062	0.02	1.110	1.178
15	WCDMA IV	RMC 12.2Kbps	Back	10mm	1513	1752.6	23.79	24.00	1.050	-0.09	1.130	1.186
	WCDMA IV	RMC 12.2Kbps	Left Side	10mm	1312	1712.4	23.89	24.00	1.026	0	0.351	0.360
	WCDMA IV	RMC 12.2Kbps	Right Side	10mm	1312	1712.4	23.89	24.00	1.026	-0.04	0.117	0.120
	WCDMA IV	RMC 12.2Kbps	Bottom Side	10mm	1312	1712.4	23.89	24.00	1.026	0	0.134	0.137
	WCDMA V	RMC 12.2Kbps	Front	10mm	4182	836.4	23.59	24.00	1.099	-0.03	0.620	0.681
	WCDMA V	RMC 12.2Kbps	Back	10mm	4182	836.4	23.59	24.00	1.099	-0.01	0.788	0.866
16	WCDMA V	RMC 12.2Kbps	Back	10mm	4132	826.4	23.50	24.00	1.122	0.07	0.795	0.892
	WCDMA V	RMC 12.2Kbps	Back	10mm	4233	846.6	23.58	24.00	1.102	-0.14	0.782	0.861
	WCDMA V	RMC 12.2Kbps	Left Side	10mm	4182	836.4	23.59	24.00	1.099	-0.13	0.655	0.720
	WCDMA V	RMC 12.2Kbps	Right Side	10mm	4182	836.4	23.59	24.00	1.099	-0.16	0.472	0.519
	WCDMA V	RMC 12.2Kbps	Bottom Side	10mm	4182	836.4	23.59	24.00	1.099	-0.06	0.235	0.258



<LTE SAR>

Plot No.	Band	BW (MHz)	Modulation	RB Size	RB offset	Test Position	Gap (mm)	Ch.	Freq. (MHz)	Average Power (dBm)	Tune-Up Limit (dBm)	Tune-up Scaling Factor	Power Drift (dB)	Measured 1g SAR (W/kg)	Reported 1g SAR (W/kg)
	LTE Band 2	20M	QPSK	1	0	Front	10mm	18700	1860	23.84	24.00	1.038	-0.11	0.646	0.670
	LTE Band 2	20M	QPSK	50	0	Front	10mm	18700	1860	22.85	23.00	1.035	-0.04	0.473	0.490
	LTE Band 2	20M	QPSK	1	0	Back	10mm	18700	1860	23.84	24.00	1.038	-0.06	1.120	1.162
	LTE Band 2	20M	QPSK	1	0	Back	10mm	18900	1880	23.76	24.00	1.057	-0.1	1.110	1.173
17	LTE Band 2	20M	QPSK	1	0	Back	10mm	19100	1900	23.80	24.00	1.047	-0.1	1.140	1.194
	LTE Band 2	20M	QPSK	50	0	Back	10mm	18700	1860	22.85	23.00	1.035	-0.12	0.865	0.895
	LTE Band 2	20M	QPSK	50	0	Back	10mm	18900	1880	22.82	23.00	1.042	-0.1	0.855	0.891
	LTE Band 2	20M	QPSK	50	0	Back	10mm	19100	1900	22.83	23.00	1.040	-0.14	0.918	0.955
	LTE Band 2	20M	QPSK	100	0	Back	10mm	18700	1860	22.80	23.00	1.047	-0.07	0.850	0.890
	LTE Band 2	20M	QPSK	1	0	Left Side	10mm	18700	1860	23.84	24.00	1.038	0.04	0.593	0.615
	LTE Band 2	20M	QPSK	50	0	Left Side	10mm	18700	1860	22.85	23.00	1.035	-0.1	0.492	0.509
	LTE Band 2	20M	QPSK	1	0	Right Side	10mm	18700	1860	23.84	24.00	1.038	-0.09	0.196	0.203
	LTE Band 2	20M	QPSK	50	0	Right Side	10mm	18700	1860	22.85	23.00	1.035	0.02	0.151	0.156
	LTE Band 2	20M	QPSK	1	0	Bottom Side	10mm	18700	1860	23.84	24.00	1.038	0.18	0.232	0.241
	LTE Band 2	20M	QPSK	50	0	Bottom Side	10mm	18700	1860	22.85	23.00	1.035	0.02	0.176	0.182
	LTE Band 4	20M	QPSK	1	0	Front	10mm	20175	1732.5	22.65	23.00	1.084	-0.09	0.435	0.472
	LTE Band 4	20M	QPSK	50	0	Front	10mm	20175	1732.5	21.51	22.00	1.119	-0.07	0.368	0.412
18	LTE Band 4	20M	QPSK	1	0	Back	10mm	20175	1732.5	22.65	23.00	1.084	0.02	0.827	0.896
	LTE Band 4	20M	QPSK	50	0	Back	10mm	20175	1732.5	21.51	22.00	1.119	0.09	0.581	0.650
	LTE Band 4	20M	QPSK	100	0	Back	10mm	20175	1732.5	21.46	22.00	1.132	-0.07	0.581	0.658
	LTE Band 4	20M	QPSK	1	0	Left Side	10mm	20175	1732.5	22.65	23.00	1.084	-0.01	0.244	0.264
	LTE Band 4	20M	QPSK	50	0	Left Side	10mm	20175	1732.5	21.51	22.00	1.119	0.02	0.192	0.215
	LTE Band 4	20M	QPSK	1	0	Right Side	10mm	20175	1732.5	22.65	23.00	1.084	-0.14	0.098	0.106
	LTE Band 4	20M	QPSK	50	0	Right Side	10mm	20175	1732.5	21.51	22.00	1.119	-0.02	0.080	0.090
	LTE Band 4	20M	QPSK	1	0	Bottom Side	10mm	20175	1732.5	22.65	23.00	1.084	0.18	0.109	0.118
	LTE Band 4	20M	QPSK	50	0	Bottom Side	10mm	20175	1732.5	21.51	22.00	1.119	-0.01	0.081	0.091
	LTE Band 5	10M	QPSK	1	0	Front	10mm	20525	836.5	23.62	24.00	1.091	-0.17	0.624	0.681
	LTE Band 5	10M	QPSK	25	0	Front	10mm	20525	836.5	22.51	23.00	1.119	-0.16	0.512	0.573
19	LTE Band 5	10M	QPSK	1	0	Back	10mm	20525	836.5	23.62	24.00	1.091	0.08	0.785	0.857
	LTE Band 5	10M	QPSK	25	0	Back	10mm	20525	836.5	22.51	23.00	1.119	-0.01	0.645	0.722
	LTE Band 5	10M	QPSK	50	0	Back	10mm	20525	836.5	22.36	23.00	1.159	0	0.628	0.728
	LTE Band 5	10M	QPSK	1	0	Left Side	10mm	20525	836.5	23.62	24.00	1.091	-0.18	0.658	0.718
	LTE Band 5	10M	QPSK	25	0	Left Side	10mm	20525	836.5	22.51	23.00	1.119	-0.11	0.536	0.600
	LTE Band 5	10M	QPSK	1	0	Right Side	10mm	20525	836.5	23.62	24.00	1.091	-0.19	0.492	0.537
	LTE Band 5	10M	QPSK	25	0	Right Side	10mm	20525	836.5	22.51	23.00	1.119	-0.02	0.400	0.448
	LTE Band 5	10M	QPSK	1	0	Bottom Side	10mm	20525	836.5	23.62	24.00	1.091	-0.16	0.233	0.254
	LTE Band 5	10M	QPSK	25	0	Bottom Side	10mm	20525	836.5	22.51	23.00	1.119	-0.03	0.196	0.219



Plot No.	Band	BW (MHz)	Modulation	RB Size	RB offset	Test Position	Gap (mm)	Ch.	Freq. (MHz)	Average Power (dBm)	Tune-Up Limit (dBm)	Tune-up Scaling Factor	Power Drift (dB)	Measured 1g SAR (W/kg)	Reported 1g SAR (W/kg)
	LTE Band 7	20M	QPSK	1	0	Front	10mm	21100	2535	22.30	22.30	1.000	-0.19	0.648	0.648
	LTE Band 7	20M	QPSK	50	0	Front	10mm	21100	2535	21.28	21.30	1.005	0.18	0.527	0.529
	LTE Band 7	20M	QPSK	1	0	Back	10mm	21100	2535	22.30	22.30	1.000	0.14	1.180	1.180
	LTE Band 7	20M	QPSK	1	0	Back	10mm	20850	2510	22.29	22.30	1.002	-0.08	1.080	1.082
20	LTE Band 7	20M	QPSK	1	0	Back	10mm	21350	2560	22.22	22.30	1.019	0.1	1.170	1.192
	LTE Band 7	20M	QPSK	50	0	Back	10mm	21100	2535	21.28	21.30	1.005	-0.06	0.811	0.815
	LTE Band 7	20M	QPSK	50	0	Back	10mm	20850	2510	21.24	21.30	1.014	-0.1	0.701	0.711
	LTE Band 7	20M	QPSK	50	0	Back	10mm	21350	2560	21.27	21.30	1.007	-0.17	0.906	0.912
	LTE Band 7	20M	QPSK	100	0	Back	10mm	21100	2535	21.25	21.30	1.012	0.01	0.828	0.838
	LTE Band 7	20M	QPSK	1	0	Left Side	10mm	21100	2535	22.30	22.30	1.000	-0.18	0.399	0.399
	LTE Band 7	20M	QPSK	50	0	Left Side	10mm	21100	2535	21.28	21.30	1.005	0.19	0.345	0.347
	LTE Band 7	20M	QPSK	1	0	Right Side	10mm	21100	2535	22.30	22.30	1.000	-0.08	0.015	0.015
	LTE Band 7	20M	QPSK	50	0	Right Side	10mm	21100	2535	21.28	21.30	1.005	-0.01	0.014	0.014
	LTE Band 7	20M	QPSK	1	0	Bottom Side	10mm	21100	2535	22.30	22.30	1.000	0.02	0.647	0.647
	LTE Band 7	20M	QPSK	50	0	Bottom Side	10mm	21100	2535	21.28	21.30	1.005	0.18	0.480	0.482

<WLAN SAR>

Plot No.	Band	Mode	Test Position	Gap (mm)	Ch.	Freq. (MHz)	Average Power (dBm)	Tune-Up Limit (dBm)	Tune-up Scaling Factor	Duty Cycle %	Duty Cycle Scaling Factor	Power Drift (dB)	Measured 1g SAR (W/kg)	Reported 1g SAR (W/kg)
	WLAN2.4GHz	802.11b 1Mbps	Front	10mm	1	2412	14.98	15.00	1.005	97.63	1.024	-0.11	0.076	0.078
21	WLAN2.4GHz	802.11b 1Mbps	Back	10mm	1	2412	14.98	15.00	1.005	97.63	1.024	0.15	0.144	0.148
	WLAN2.4GHz	802.11b 1Mbps	Right Side	10mm	1	2412	14.98	15.00	1.005	97.63	1.024	0.14	0.082	0.084
	WLAN2.4GHz	802.11b 1Mbps	Top Side	10mm	1	2412	14.98	15.00	1.005	97.63	1.024	0.15	0.057	0.059



14.3 Body Worn Accessory SAR

<GSM SAR>

Table with 13 columns: Plot No., Band, Mode, Test Position, Gap (mm), Ch., Freq. (MHz), Average Power (dBm), Tune-Up Limit (dBm), Tune-up Scaling Factor, Power Drift (dB), Measured 1g SAR (W/kg), Reported 1g SAR (W/kg). Rows include GSM850 and GSM1900 data points.

<WCDMA SAR>

Table with 13 columns: Plot No., Band, Mode, Test Position, Gap (mm), Ch., Freq. (MHz), Average Power (dBm), Tune-Up Limit (dBm), Tune-up Scaling Factor, Power Drift (dB), Measured 1g SAR (W/kg), Reported 1g SAR (W/kg). Rows include WCDMA II, WCDMA IV, and WCDMA V data points.



<LTE SAR>

Plot No.	Band	BW (MHz)	Modulation	RB Size	RB offset	Test Position	Gap (mm)	Ch.	Freq. (MHz)	Average Power (dBm)	Tune-Up Limit (dBm)	Tune-up Scaling Factor	Power Drift (dB)	Measured 1g SAR (W/kg)	Reported 1g SAR (W/kg)
	LTE Band 2	20M	QPSK	1	0	Front	10mm	18700	1860	23.84	24.00	1.038	-0.11	0.646	0.670
	LTE Band 2	20M	QPSK	50	0	Front	10mm	18700	1860	22.85	23.00	1.035	-0.04	0.473	0.490
	LTE Band 2	20M	QPSK	1	0	Back	10mm	18700	1860	23.84	24.00	1.038	-0.06	1.120	1.162
	LTE Band 2	20M	QPSK	1	0	Back	10mm	18900	1880	23.76	24.00	1.057	-0.1	1.110	1.173
27	LTE Band 2	20M	QPSK	1	0	Back	10mm	19100	1900	23.80	24.00	1.047	-0.1	1.140	1.194
	LTE Band 2	20M	QPSK	50	0	Back	10mm	18700	1860	22.85	23.00	1.035	-0.12	0.865	0.895
	LTE Band 2	20M	QPSK	50	0	Back	10mm	18900	1880	22.82	23.00	1.042	-0.1	0.855	0.891
	LTE Band 2	20M	QPSK	50	0	Back	10mm	19100	1900	22.83	23.00	1.040	-0.14	0.918	0.955
	LTE Band 2	20M	QPSK	100	0	Back	10mm	18700	1860	22.80	23.00	1.047	-0.07	0.850	0.890
	LTE Band 4	20M	QPSK	1	0	Front	10mm	20175	1732.5	22.65	23.00	1.084	-0.09	0.435	0.472
	LTE Band 4	20M	QPSK	50	0	Front	10mm	20175	1732.5	21.51	22.00	1.119	-0.07	0.368	0.412
28	LTE Band 4	20M	QPSK	1	0	Back	10mm	20175	1732.5	22.65	23.00	1.084	0.02	0.827	0.896
	LTE Band 4	20M	QPSK	50	0	Back	10mm	20175	1732.5	21.51	22.00	1.119	0.09	0.581	0.650
	LTE Band 4	20M	QPSK	100	0	Back	10mm	20175	1732.5	21.46	22.00	1.132	-0.07	0.581	0.658
	LTE Band 5	10M	QPSK	1	0	Front	10mm	20525	836.5	23.62	24.00	1.091	-0.17	0.624	0.681
	LTE Band 5	10M	QPSK	25	0	Front	10mm	20525	836.5	22.51	23.00	1.119	-0.16	0.512	0.573
29	LTE Band 5	10M	QPSK	1	0	Back	10mm	20525	836.5	23.62	24.00	1.091	0.08	0.785	0.857
	LTE Band 5	10M	QPSK	25	0	Back	10mm	20525	836.5	22.51	23.00	1.119	-0.01	0.645	0.722
	LTE Band 5	10M	QPSK	50	0	Back	10mm	20525	836.5	22.36	23.00	1.159	0	0.628	0.728
	LTE Band 7	20M	QPSK	1	0	Front	10mm	21100	2535	22.30	22.30	1.000	-0.19	0.648	0.648
	LTE Band 7	20M	QPSK	50	0	Front	10mm	21100	2535	21.28	21.30	1.005	0.18	0.527	0.529
	LTE Band 7	20M	QPSK	1	0	Back	10mm	21100	2535	22.30	22.30	1.000	0.14	1.180	1.180
	LTE Band 7	20M	QPSK	1	0	Back	10mm	20850	2510	22.29	22.30	1.002	-0.08	1.080	1.082
30	LTE Band 7	20M	QPSK	1	0	Back	10mm	21350	2560	22.22	22.30	1.019	0.1	1.170	1.192
	LTE Band 7	20M	QPSK	50	0	Back	10mm	21100	2535	21.28	21.30	1.005	-0.06	0.811	0.815
	LTE Band 7	20M	QPSK	50	0	Back	10mm	20850	2510	21.24	21.30	1.014	-0.1	0.701	0.711
	LTE Band 7	20M	QPSK	50	0	Back	10mm	21350	2560	21.27	21.30	1.007	-0.17	0.906	0.912
	LTE Band 7	20M	QPSK	100	0	Back	10mm	21100	2535	21.25	21.30	1.012	0.01	0.828	0.838

<WLAN SAR>

Plot No.	Band	Mode	Test Position	Gap (mm)	Ch.	Freq. (MHz)	Average Power (dBm)	Tune-Up Limit (dBm)	Tune-up Scaling Factor	Duty Cycle %	Duty Cycle Scaling Factor	Power Drift (dB)	Measured 1g SAR (W/kg)	Reported 1g SAR (W/kg)
	WLAN2.4GHz	802.11b 1Mbps	Front	10mm	1	2412	14.98	15.00	1.005	97.63	1.024	-0.11	0.076	0.078
31	WLAN2.4GHz	802.11b 1Mbps	Back	10mm	1	2412	14.98	15.00	1.005	97.63	1.024	0.15	0.144	0.148

14.4 Repeated SAR Measurement

Plot No.	Band	Mode	Test Position	Gap (mm)	Ch.	Freq. (MHz)	Average Power (dBm)	Tune-Up Limit (dBm)	Tune-up Scaling Factor	Power Drift (dB)	Measured 1g SAR (W/kg)	Ratio	Reported 1g SAR (W/kg)
1st	WCDMA IV	RMC 12.2Kbps	Back	10mm	1513	1752.6	23.79	24.00	1.050	-0.09	1.130	-	1.186
2nd	WCDMA IV	RMC 12.2Kbps	Back	10mm	1513	1752.6	23.79	24.00	1.050	-0.06	1.030	1.10	1.081
1st	LTE Band 2	20M_QPSK_1_0	Back	10mm	19100	1900	23.80	24.00	1.047	-0.1	1.140	-	1.194
2nd	LTE Band 2	20M_QPSK_1_0	Back	10mm	19100	1900	23.80	24.00	1.047	-0.18	1.100	1.04	1.152
1st	LTE Band 7	20M_QPSK_1_0	Back	10mm	21350	2560	22.22	22.30	1.019	0.1	1.170	-	1.192
2nd	LTE Band 7	20M_QPSK_1_0	Back	10mm	21350	2560	22.22	22.30	1.019	-0.14	1.160	1.01	1.182

General Note:

1. Per KDB 865664 D01v01r04, for each frequency band, repeated SAR measurement is required only when the measured SAR is $\geq 0.8W/kg$.
2. Per KDB 865664 D01v01r04, if the ratio among the repeated measurement is ≤ 1.2 and the measured SAR $< 1.45W/kg$, only one repeated measurement is required.
3. The ratio is the difference in percentage between original and repeated *measured SAR*.
4. All measurement SAR result is scaled-up to account for tune-up tolerance and is compliant.

15. Simultaneous Transmission Analysis

NO.	Simultaneous Transmission Configurations	Portable Handset		
		Head	Body-worn	Hotspot
1.	GSM Voice + WLAN2.4GHz	Yes	Yes	
2.	GPRS/EDGE + WLAN2.4GHz	Yes	Yes	Yes
3.	WCDMA + WLAN2.4GHz	Yes	Yes	Yes
4.	LTE + WLAN2.4GHz	Yes	Yes	Yes
5.	GSM Voice + Bluetooth	Yes	Yes	
6.	GPRS/EDGE + Bluetooth	Yes	Yes	Yes
7.	WCDMA+ Bluetooth	Yes	Yes	Yes
8.	LTE + Bluetooth	Yes	Yes	Yes

General Note:

1. This device WLAN 2.4GHz supports Hotspot operation and Bluetooth support tethering applications.
2. WLAN and Bluetooth share the same antenna, and cannot transmit simultaneously.
3. The Scaled SAR summation is calculated based on the same configuration and test position.
4. Per KDB 447498 D01v06, simultaneous transmission SAR is compliant if,
 - i) Scalar SAR summation < 1.6W/kg.
 - ii) $SPLSR = (SAR1 + SAR2)^{1.5} / (\text{min. separation distance, mm})$, and the peak separation distance is determined from the square root of $[(x1-x2)^2 + (y1-y2)^2 + (z1-z2)^2]$, where (x1, y1, z1) and (x2, y2, z2) are the coordinates of the extrapolated peak SAR locations in the zoom scan.
 - iii) If $SPLSR \leq 0.04$, simultaneously transmission SAR measurement is not necessary.
 - iv) Simultaneously transmission SAR measurement, and the reported multi-band SAR < 1.6W/kg.
5. For simultaneous transmission analysis, Bluetooth SAR is estimated per KDB 447498 D01v06 based on the formula below.
 - i) $(\text{max. power of channel, including tune-up tolerance, mW}) / (\text{min. test separation distance, mm}) \cdot [\sqrt{f(\text{GHz})} / x] \text{ W/kg}$ for test separation distances $\leq 50 \text{ mm}$; where $x = 7.5$ for 1-g SAR, and $x = 18.75$ for 10-g SAR.
 - ii) When the minimum separation distance is < 5mm, the distance is used 5mm to determine SAR test exclusion.
 - iii) 0.4 W/kg for 1-g SAR and 1.0 W/kg for 10-g SAR, when the test separation distances is > 50 mm.

Bluetooth Max Power	Exposure Position	Hotspot	Body worn
	Test separation	10 mm	10 mm
10 dBm	Estimated SAR (W/kg)	0.210 W/kg	0.210 W/kg



15.1 Head Exposure Conditions

WWAN Band		Exposure Position	1	2	3	1+2 Summed 1g SAR (W/kg)	1+3 Summed 1g SAR (W/kg)
			WWAN 1g SAR (W/kg)	2.4GHz WLAN 1g SAR (W/kg)	Bluetooth 1g SAR (W/kg)		
GSM	GSM850	Right Cheek	0.609	0.193	0.029	0.80	0.64
		Right Tilted	0.347	0.146	0.027	0.49	0.37
		Left Cheek	0.779	0.395	0.058	1.17	0.84
		Left Tilted	0.376	0.215	0.035	0.59	0.41
	GSM1900	Right Cheek	0.292	0.193	0.029	0.49	0.32
		Right Tilted	0.107	0.146	0.027	0.25	0.13
		Left Cheek	0.546	0.395	0.058	0.94	0.60
		Left Tilted	0.101	0.215	0.035	0.32	0.14
WCDMA	WCDMA II	Right Cheek	0.451	0.193	0.029	0.64	0.48
		Right Tilted	0.189	0.146	0.027	0.34	0.22
		Left Cheek	0.911	0.395	0.058	1.31	0.97
		Left Tilted	0.128	0.215	0.035	0.34	0.16
	WCDMA IV	Right Cheek	0.405	0.193	0.029	0.60	0.43
		Right Tilted	0.264	0.146	0.027	0.41	0.29
		Left Cheek	0.569	0.395	0.058	0.96	0.63
		Left Tilted	0.292	0.215	0.035	0.51	0.33
	WCDMA V	Right Cheek	0.470	0.193	0.029	0.66	0.50
		Right Tilted	0.280	0.146	0.027	0.43	0.31
		Left Cheek	0.576	0.395	0.058	0.97	0.63
		Left Tilted	0.307	0.215	0.035	0.52	0.34
LTE	LTE Band 2	Right Cheek	0.533	0.193	0.029	0.73	0.56
		Right Tilted	0.211	0.146	0.027	0.36	0.24
		Left Cheek	1.037	0.395	0.058	1.43	1.10
		Left Tilted	0.241	0.215	0.035	0.46	0.28
	LTE Band 4	Right Cheek	0.356	0.193	0.029	0.55	0.39
		Right Tilted	0.185	0.146	0.027	0.33	0.21
		Left Cheek	0.468	0.395	0.058	0.86	0.53
		Left Tilted	0.238	0.215	0.035	0.45	0.27
	LTE Band 5	Right Cheek	0.462	0.193	0.029	0.66	0.49
		Right Tilted	0.286	0.146	0.027	0.43	0.31
		Left Cheek	0.594	0.395	0.058	0.99	0.65
		Left Tilted	0.305	0.215	0.035	0.52	0.34
	LTE Band 7	Right Cheek	0.217	0.193	0.029	0.41	0.25
		Right Tilted	0.181	0.146	0.027	0.33	0.21
		Left Cheek	0.419	0.395	0.058	0.81	0.48
		Left Tilted	0.114	0.215	0.035	0.33	0.15



15.2 Hotspot Exposure Conditions

WWAN Band		Exposure Position	1	2	3	1+2 Summed 1g SAR (W/kg)	1+3 Summed 1g SAR (W/kg)
			WWAN	2.4GHz WLAN	Bluetooth		
			1g SAR (W/kg)	1g SAR (W/kg)	Estimated 1g SAR (W/kg)		
GSM	GSM850	Front	0.793	0.078	0.210	0.87	1.00
		Back	1.045	0.148	0.210	1.19	1.26
		Left side	0.778			0.78	0.78
		Right side	0.535	0.084	0.210	0.62	0.75
		Top side		0.059	0.210	0.06	0.21
		Bottom side	0.333			0.33	0.33
	GSM1900	Front	0.428	0.078	0.210	0.51	0.64
		Back	0.628	0.148	0.210	0.78	0.84
		Left side	0.303			0.30	0.30
		Right side	0.071	0.084	0.210	0.16	0.28
		Top side		0.059	0.210	0.06	0.21
		Bottom side	0.121			0.12	0.12
WCDMA	WCDMA II	Front	0.668	0.078	0.210	0.75	0.88
		Back	1.144	0.148	0.210	1.29	1.35
		Left side	0.509			0.51	0.51
		Right side	0.112	0.084	0.210	0.20	0.32
		Top side		0.059	0.210	0.06	0.21
		Bottom side	0.210			0.21	0.21
	WCDMA IV	Front	0.687	0.078	0.210	0.77	0.90
		Back	1.186	0.148	0.210	1.33	1.40
		Left side	0.360			0.36	0.36
		Right side	0.120	0.084	0.210	0.20	0.33
		Top side		0.059	0.210	0.06	0.21
		Bottom side	0.137			0.14	0.14
	WCDMA V	Front	0.681	0.078	0.210	0.76	0.89
		Back	0.892	0.148	0.210	1.04	1.10
		Left side	0.720			0.72	0.72
		Right side	0.519	0.084	0.210	0.60	0.73
		Top side		0.059	0.210	0.06	0.21
		Bottom side	0.258			0.26	0.26



WWAN Band		Exposure Position	1	2	3	1+2 Summed 1g SAR (W/kg)	1+3 Summed 1g SAR (W/kg)
			WWAN 1g SAR (W/kg)	2.4GHz WLAN 1g SAR (W/kg)	Bluetooth Estimated 1g SAR (W/kg)		
LTE	LTE Band 2	Front	0.670	0.078	0.210	0.75	0.88
		Back	1.194	0.148	0.210	1.34	1.40
		Left side	0.615			0.62	0.62
		Right side	0.203	0.084	0.210	0.29	0.41
		Top side		0.059	0.210	0.06	0.21
		Bottom side	0.241			0.24	0.24
	LTE Band 4	Front	0.472	0.078	0.210	0.55	0.68
		Back	0.896	0.148	0.210	1.04	1.11
		Left side	0.264			0.26	0.26
		Right side	0.106	0.084	0.210	0.19	0.32
		Top side		0.059	0.210	0.06	0.21
		Bottom side	0.118			0.12	0.12
	LTE Band 5	Front	0.681	0.078	0.210	0.76	0.89
		Back	0.857	0.148	0.210	1.01	1.07
		Left side	0.718			0.72	0.72
		Right side	0.537	0.084	0.210	0.62	0.75
		Top side		0.059	0.210	0.06	0.21
		Bottom side	0.254			0.25	0.25
	LTE Band 7	Front	0.648	0.078	0.210	0.73	0.86
		Back	1.192	0.148	0.210	1.34	1.40
		Left side	0.399			0.40	0.40
		Right side	0.015	0.084	0.210	0.10	0.23
		Top side		0.059	0.210	0.06	0.21
		Bottom side	0.647			0.65	0.65



15.3 Body-Worn Accessory Exposure Conditions

WWAN Band		Exposure Position	1	2	3	1+2 Summed 1g SAR (W/kg)	1+3 Summed 1g SAR (W/kg)
			WWAN	2.4GHz WLAN	Bluetooth		
			1g SAR (W/kg)	1g SAR (W/kg)	Estimated 1g SAR (W/kg)		
GSM	GSM850	Front	0.793	0.078	0.210	0.87	1.00
		Back	1.045	0.148	0.210	1.19	1.26
	GSM1900	Front	0.428	0.078	0.210	0.51	0.64
		Back	0.628	0.148	0.210	0.78	0.84
WCDMA	WCDMA II	Front	0.668	0.078	0.210	0.75	0.88
		Back	1.144	0.148	0.210	1.29	1.35
	WCDMA IV	Front	0.687	0.078	0.210	0.77	0.90
		Back	1.186	0.148	0.210	1.33	1.40
	WCDMA V	Front	0.681	0.078	0.210	0.76	0.89
		Back	0.892	0.148	0.210	1.04	1.10
LTE	LTE Band 2	Front	0.670	0.078	0.210	0.75	0.88
		Back	1.194	0.148	0.210	1.34	1.40
	LTE Band 4	Front	0.472	0.078	0.210	0.55	0.68
		Back	0.896	0.148	0.210	1.04	1.11
	LTE Band 5	Front	0.681	0.078	0.210	0.76	0.89
		Back	0.857	0.148	0.210	1.01	1.07
	LTE Band 7	Front	0.648	0.078	0.210	0.73	0.86
		Back	1.192	0.148	0.210	1.34	1.40

Test Engineer : Jay Jian Ted White Huang Wilson Lin Kurt Liu and Thomas Wang

16. Uncertainty Assessment

The component of uncertainty may generally be categorized according to the methods used to evaluate them. The evaluation of uncertainty by the statistical analysis of a series of observations is termed a Type A evaluation of uncertainty. The evaluation of uncertainty by means other than the statistical analysis of a series of observation is termed a Type B evaluation of uncertainty. Each component of uncertainty, however evaluated, is represented by an estimated standard deviation, termed standard uncertainty, which is determined by the positive square root of the estimated variance.

A Type A evaluation of standard uncertainty may be based on any valid statistical method for treating data. This includes calculating the standard deviation of the mean of a series of independent observations; using the method of least squares to fit a curve to the data in order to estimate the parameter of the curve and their standard deviations; or carrying out an analysis of variance in order to identify and quantify random effects in certain kinds of measurement.

A type B evaluation of standard uncertainty is typically based on scientific judgment using all of the relevant information available. These may include previous measurement data, experience, and knowledge of the behavior and properties of relevant materials and instruments, manufacture’s specification, data provided in calibration reports and uncertainties assigned to reference data taken from handbooks. Broadly speaking, the uncertainty is either obtained from an outdoor source or obtained from an assumed distribution, such as the normal distribution, rectangular or triangular distributions indicated in table below.

Uncertainty Distributions	Normal	Rectangular	Triangular	U-Shape
Multi-plying Factor ^(a)	1/k ^(b)	1/√3	1/√6	1/√2

(a) standard uncertainty is determined as the product of the multiplying factor and the estimated range of variations in the measured quantity

(b) κ is the coverage factor

Table 16.1. Standard Uncertainty for Assumed Distribution

The combined standard uncertainty of the measurement result represents the estimated standard deviation of the result. It is obtained by combining the individual standard uncertainties of both Type A and Type B evaluation using the usual “root-sum-squares” (RSS) methods of combining standard deviations by taking the positive square root of the estimated variances.

Expanded uncertainty is a measure of uncertainty that defines an interval about the measurement result within which the measured value is confidently believed to lie. It is obtained by multiplying the combined standard uncertainty by a coverage factor. Typically, the coverage factor ranges from 2 to 3. Using a coverage factor allows the true value of a measured quantity to be specified with a defined probability within the specified uncertainty range. For purpose of this document, a coverage factor two is used, which corresponds to confidence interval of about 95 %. The DASY uncertainty Budget is shown in the following tables.



Error Description	Uncertainty Value (±%)	Probability	Divisor	(Ci) 1g	(Ci) 10g	Standard Uncertainty (1g) (±%)	Standard Uncertainty (10g) (±%)
Measurement System							
Probe Calibration	6.00	N	1	1	1	6.0	6.0
Axial Isotropy	4.70	R	1.732	0.7	0.7	1.9	1.9
Hemispherical Isotropy	9.60	R	1.732	0.7	0.7	3.9	3.9
Boundary Effects	1.00	R	1.732	1	1	0.6	0.6
Linearity	4.70	R	1.732	1	1	2.7	2.7
System Detection Limits	1.00	R	1.732	1	1	0.6	0.6
Modulation Response	4.68	R	1.732	1	1	2.7	2.7
Readout Electronics	0.30	N	1	1	1	0.3	0.3
Response Time	0.00	R	1.732	1	1	0.0	0.0
Integration Time	2.60	R	1.732	1	1	1.5	1.5
RF Ambient Noise	3.00	R	1.732	1	1	1.7	1.7
RF Ambient Reflections	3.00	R	1.732	1	1	1.7	1.7
Probe Positioner	0.40	R	1.732	1	1	0.2	0.2
Probe Positioning	2.90	R	1.732	1	1	1.7	1.7
Max. SAR Eval.	2.00	R	1.732	1	1	1.2	1.2
Test Sample Related							
Device Positioning	3.03	N	1	1	1	3.0	3.0
Device Holder	3.60	N	1	1	1	3.6	3.6
Power Drift	5.00	R	1.732	1	1	2.9	2.9
Power Scaling	0.00	R	1.732	1	1	0.0	0.0
Phantom and Setup							
Phantom Uncertainty	6.10	R	1.732	1	1	3.5	3.5
SAR correction	0.00	R	1.732	1	0.84	0.0	0.0
Liquid Conductivity Repeatability	0.03	N	1	0.78	0.71	0.0	0.0
Liquid Conductivity (target)	5.00	R	1.732	0.78	0.71	2.3	2.0
Liquid Conductivity (mea.)	2.50	R	1.732	0.78	0.71	1.1	1.0
Temp. unc. - Conductivity	3.68	R	1.732	0.78	0.71	1.7	1.5
Liquid Permittivity Repeatability	0.02	N	1	0.23	0.26	0.0	0.0
Liquid Permittivity (target)	5.00	R	1.732	0.23	0.26	0.7	0.8
Liquid Permittivity (mea.)	2.50	R	1.732	0.23	0.26	0.3	0.4
Temp. unc. - Permittivity	0.84	R	1.732	0.23	0.26	0.1	0.1
Combined Std. Uncertainty						11.6%	11.6%
Coverage Factor for 95 %						K=2	K=2
Expanded STD Uncertainty						23.2%	23.1%

Table 16.2. Uncertainty Budget for frequency range 300 MHz to 3 GHz



17. References

- [1] FCC 47 CFR Part 2 “Frequency Allocations and Radio Treaty Matters; General Rules and Regulations”
- [2] ANSI/IEEE Std. C95.1-1992, “IEEE Standard for Safety Levels with Respect to Human Exposure to Radio Frequency Electromagnetic Fields, 3 kHz to 300 GHz”, September 1992
- [3] IEEE Std. 1528-2013, “IEEE Recommended Practice for Determining the Peak Spatial-Average Specific Absorption Rate (SAR) in the Human Head from Wireless Communications Devices: Measurement Techniques”, Sep 2013
- [4] SPEAG DASY System Handbook
- [5] FCC KDB 248227 D01 v02r02, “SAR Guidance for IEEE 802.11 (WiFi) Transmitters”, Oct 2015.
- [6] FCC KDB 447498 D01 v06, “Mobile and Portable Device RF Exposure Procedures and Equipment Authorization Policies”, Oct 2015
- [7] FCC KDB 648474 D04 v01r03, “SAR Evaluation Considerations for Wireless Handsets”, Oct 2015.
- [8] FCC KDB 941225 D01 v03r01, “3G SAR MEAUREMENT PROCEDURES”, Oct 2015
- [9] FCC KDB 941225 D05 v02r05, “SAR Evaluation Considerations for LTE Devices”, Dec 2015
- [10] FCC KDB 941225 D06 v02r01, "SAR Evaluation Procedures for Portable Devices with Wireless Router Capabilities", Oct 2015.
- [11] FCC KDB 865664 D01 v01r04, "SAR Measurement Requirements for 100 MHz to 6 GHz", Aug 2015.
- [12] FCC KDB 865664 D02 v01r02, “RF Exposure Compliance Reporting and Documentation Considerations” Oct 2015.