

43_WLAN5GHz_802.11ac-VHT80 MCS0_Back_10mm_Ch155

Communication System: UID 0, WLAN5GHz (0); Frequency: 5775 MHz; Duty Cycle: 1:1.107
Medium: HSL_5000 Medium parameters used: $f = 5775 \text{ MHz}$; $\sigma = 5.209 \text{ S/m}$; $\epsilon_r = 35.681$; $\rho = 1000 \text{ kg/m}^3$

Ambient Temperature : 23.3 °C; Liquid Temperature : 22.8 °C

DASY5 Configuration:

- Probe: EX3DV4 - SN7627; ConvF(4.9, 4.9, 4.9); Calibrated: 2022/6/20
- Sensor-Surface: 1.4mm (Mechanical Surface Detection)
- Electronics: DAE4 Sn690; Calibrated: 2022/6/15
- Phantom: SAM Twin Phantom; Type: SAM Twin; Serial: TP-1644
- Measurement SW: DASY52, Version 52.10 (4); SEMCAD X Version 14.6.14 (7501)

Area Scan (111x201x1): Interpolated grid: $dx=1.000 \text{ mm}$, $dy=1.000 \text{ mm}$

Maximum value of SAR (interpolated) = 0.623 W/kg

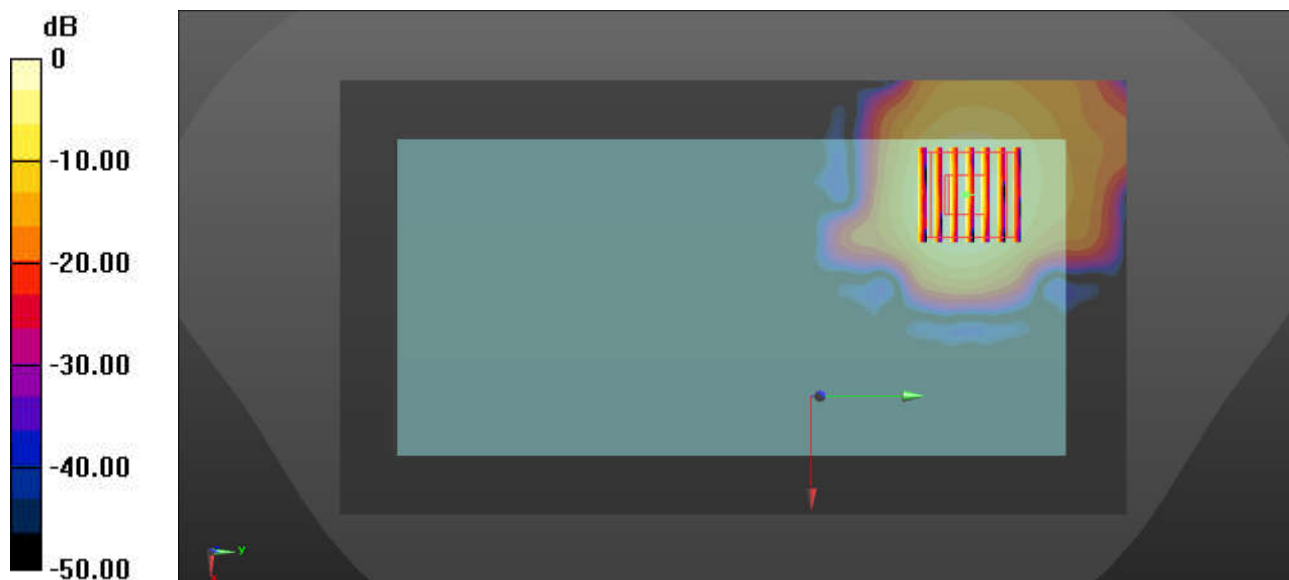
Zoom Scan (7x7x7)/Cube 0: Measurement grid: $dx=4\text{mm}$, $dy=4\text{mm}$, $dz=1.4\text{mm}$

Reference Value = 11.71 V/m; Power Drift = 0.03 dB

Peak SAR (extrapolated) = 0.955 W/kg

SAR(1 g) = 0.279 W/kg; SAR(10 g) = 0.085 W/kg

Maximum value of SAR (measured) = 0.613 W/kg



0 dB = 0.613 W/kg = -2.13 dBW/kg

44_GSM850_GPRS (4 Tx slots)_Back_10mm_Ch251

Communication System: UID 0, GSM850 (0); Frequency: 848.8 MHz; Duty Cycle: 1:2.08
Medium: HSL_835 Medium parameters used: $f = 848.8$ MHz; $\sigma = 0.935$ S/m; $\epsilon_r = 40.895$; $\rho = 1000$ kg/m³

Ambient Temperature : 23.3 °C; Liquid Temperature : 22.7 °C

DASY5 Configuration:

- Probe: EX3DV4 - SN7627; ConvF(10.17, 10.17, 10.17); Calibrated: 2022/6/20
- Sensor-Surface: 1.4mm (Mechanical Surface Detection)
- Electronics: DAE4 Sn690; Calibrated: 2022/6/15
- Phantom: SAM Twin Phantom; Type: SAM Twin; Serial: TP-1644
- Measurement SW: DASY52, Version 52.10 (4); SEMCAD X Version 14.6.14 (7501)

Area Scan (71x131x1): Interpolated grid: dx=1.500 mm, dy=1.500 mm

Maximum value of SAR (interpolated) = 1.23 W/kg

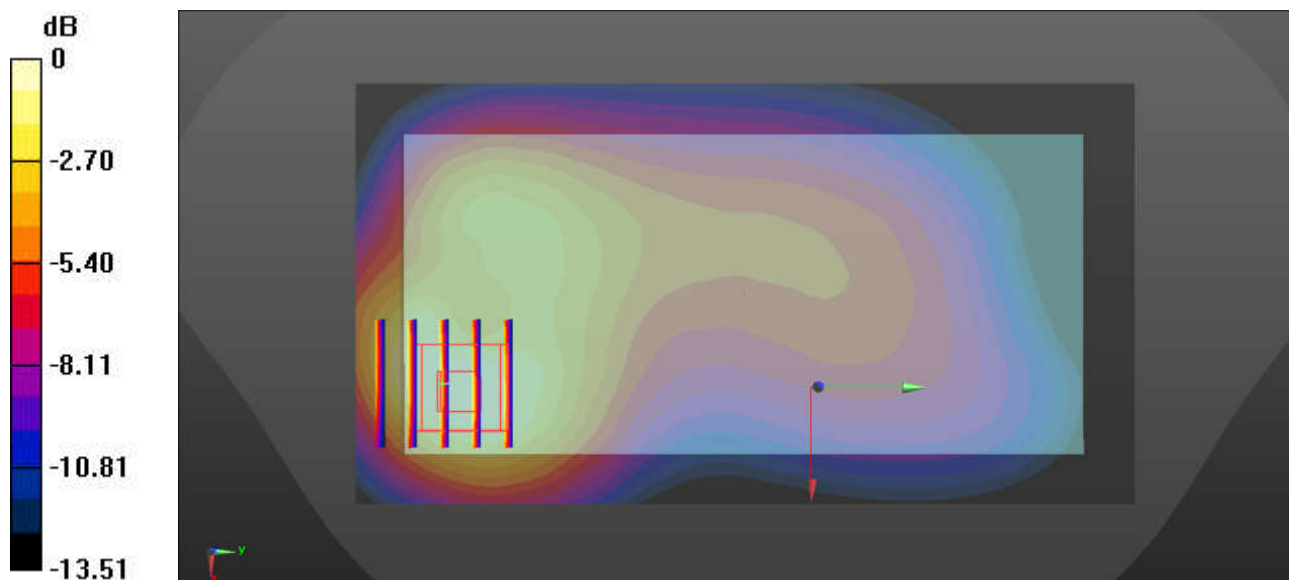
Zoom Scan (5x5x7)/Cube 0: Measurement grid: dx=8mm, dy=8mm, dz=5mm

Reference Value = 19.97 V/m; Power Drift = -0.02 dB

Peak SAR (extrapolated) = 1.40 W/kg

SAR(1 g) = 0.849 W/kg; SAR(10 g) = 0.516 W/kg

Maximum value of SAR (measured) = 1.18 W/kg



0 dB = 1.18 W/kg = 0.72 dBW/kg

45_WCDMA V_RMC 12.2Kbps_Back_10mm_Ch4182

Communication System: UID 0, WCDMA (0); Frequency: 836.4 MHz; Duty Cycle: 1:1
 Medium: HSL_835 Medium parameters used: $f = 836.4 \text{ MHz}$; $\sigma = 0.93 \text{ S/m}$; $\epsilon_r = 40.933$; $\rho = 1000 \text{ kg/m}^3$

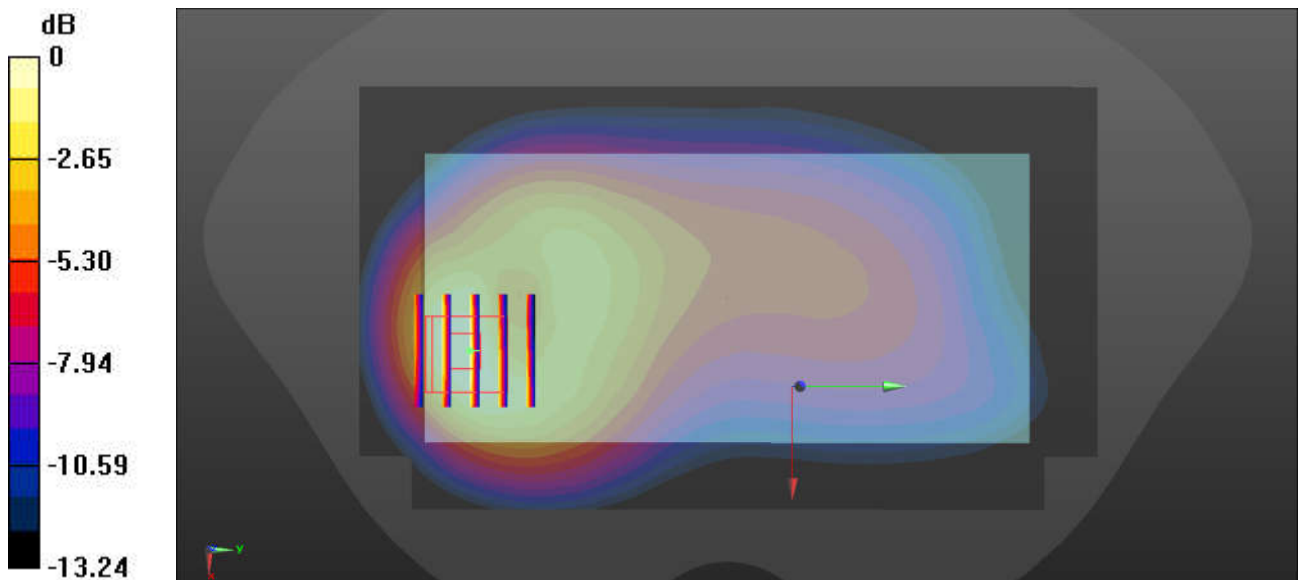
Ambient Temperature : 23.3 °C; Liquid Temperature : 22.7 °C

DASY5 Configuration:

- Probe: EX3DV4 - SN7627; ConvF(10.17, 10.17, 10.17); Calibrated: 2022/6/20
- Sensor-Surface: 1.4mm (Mechanical Surface Detection)
- Electronics: DAE4 Sn690; Calibrated: 2022/6/15
- Phantom: SAM Twin Phantom; Type: SAM Twin; Serial: TP-1644
- Measurement SW: DASY52, Version 52.10 (4); SEMCAD X Version 14.6.14 (7501)

Area Scan (81x141x1): Interpolated grid: $dx=1.500 \text{ mm}$, $dy=1.500 \text{ mm}$
 Maximum value of SAR (interpolated) = 1.13 W/kg

Zoom Scan (5x5x7)/Cube 0: Measurement grid: $dx=8\text{mm}$, $dy=8\text{mm}$, $dz=5\text{mm}$
 Reference Value = 31.10 V/m; Power Drift = 0.07 dB
 Peak SAR (extrapolated) = 1.28 W/kg
SAR(1 g) = 0.792 W/kg; SAR(10 g) = 0.468 W/kg
 Maximum value of SAR (measured) = 1.09 W/kg



0 dB = 1.09 W/kg = 0.37 dBW/kg

46_LTE Band 5_10M_QPSK_25RB_0Offset_Back_10mm_Ch20525

Communication System: UID 0, LTE-FDD (0); Frequency: 836.5 MHz; Duty Cycle: 1:1
Medium: HSL_835 Medium parameters used: $f = 836.5$ MHz; $\sigma = 0.93$ S/m; $\epsilon_r = 40.933$; $\rho = 1000$ kg/m³

Ambient Temperature : 23.3 °C; Liquid Temperature : 22.7 °C

DASY5 Configuration:

- Probe: EX3DV4 - SN7627; ConvF(10.17, 10.17, 10.17); Calibrated: 2022/6/20
- Sensor-Surface: 1.4mm (Mechanical Surface Detection)
- Electronics: DAE4 Sn690; Calibrated: 2022/6/15
- Phantom: SAM Twin Phantom; Type: SAM Twin; Serial: TP-1644
- Measurement SW: DASY52, Version 52.10 (4); SEMCAD X Version 14.6.14 (7501)

Area Scan (81x141x1): Interpolated grid: dx=1.500 mm, dy=1.500 mm

Maximum value of SAR (interpolated) = 0.768 W/kg

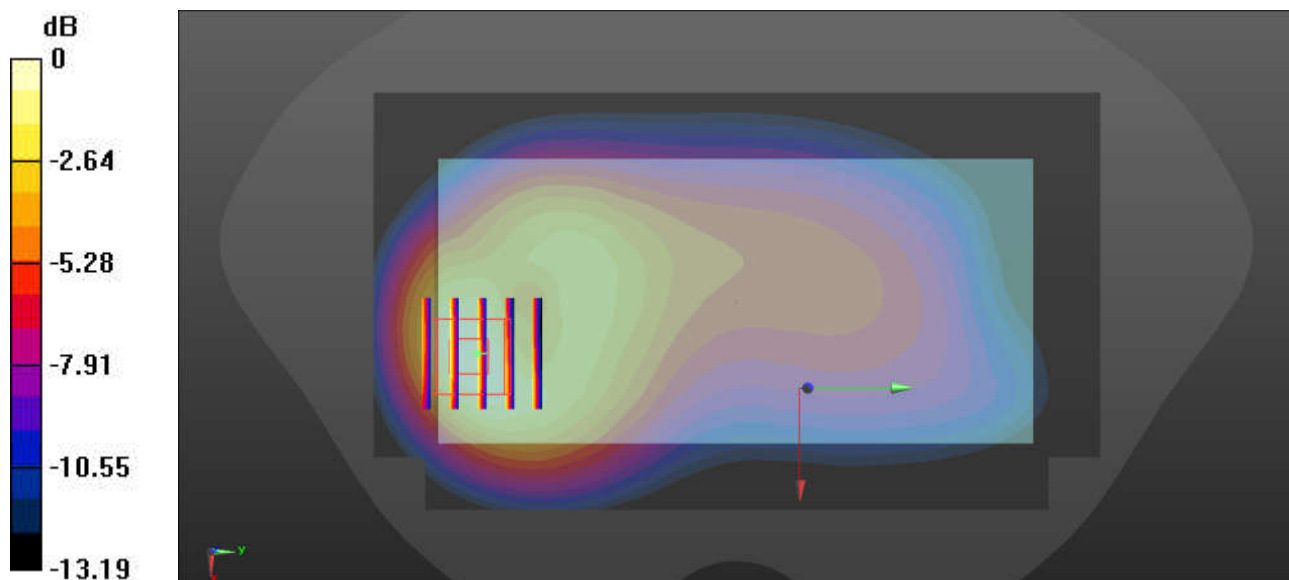
Zoom Scan (5x5x7)/Cube 0: Measurement grid: dx=8mm, dy=8mm, dz=5mm

Reference Value = 26.10 V/m; Power Drift = 0.09 dB

Peak SAR (extrapolated) = 0.913 W/kg

SAR(1 g) = 0.564 W/kg; SAR(10 g) = 0.334 W/kg

Maximum value of SAR (measured) = 0.765 W/kg



0 dB = 0.765 W/kg = -1.16 dBW/kg

47_FR1 n5_20M_QPSK_25RB_13Offset_Back_10mm_Ch167300

Communication System: UID 0, 5G NR (0); Frequency: 836.5 MHz; Duty Cycle: 1:1
Medium: HSL_835 Medium parameters used: $f = 836.5$ MHz; $\sigma = 0.93$ S/m; $\epsilon_r = 40.933$; $\rho = 1000$ kg/m³

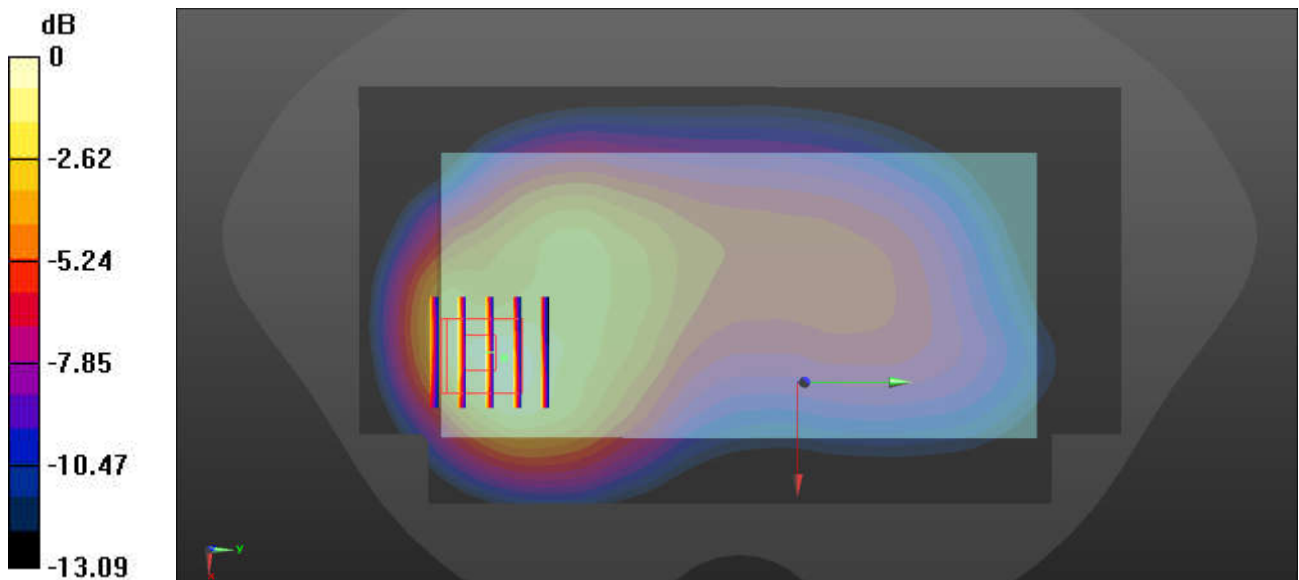
Ambient Temperature : 23.3 °C; Liquid Temperature : 22.7 °C

DASY5 Configuration:

- Probe: EX3DV4 - SN7627; ConvF(10.17, 10.17, 10.17); Calibrated: 2022/6/20
- Sensor-Surface: 1.4mm (Mechanical Surface Detection)
- Electronics: DAE4 Sn690; Calibrated: 2022/6/15
- Phantom: SAM Twin Phantom; Type: SAM Twin; Serial: TP-1644
- Measurement SW: DASY52, Version 52.10 (4); SEMCAD X Version 14.6.14 (7501)

Area Scan (61x141x1): Interpolated grid: dx=1.500 mm, dy=1.500 mm
Maximum value of SAR (interpolated) = 0.604 W/kg

Zoom Scan (5x5x7)/Cube 0: Measurement grid: dx=8mm, dy=8mm, dz=5mm
Reference Value = 24.58 V/m; Power Drift = 0.06 dB
Peak SAR (extrapolated) = 0.741 W/kg
SAR(1 g) = 0.462 W/kg; SAR(10 g) = 0.276 W/kg
Maximum value of SAR (measured) = 0.627 W/kg



0 dB = 0.627 W/kg = -2.03 dBW/kg

48_WCDMA IV_RMC 12.2Kbps_Front_10mm_Ch1413

Communication System: UID 0, WCDMA (0); Frequency: 1732.6 MHz; Duty Cycle: 1:1
Medium: HSL_1750 Medium parameters used: $f = 1732.6$ MHz; $\sigma = 1.4$ S/m; $\epsilon_r = 40.756$; $\rho = 1000$ kg/m³

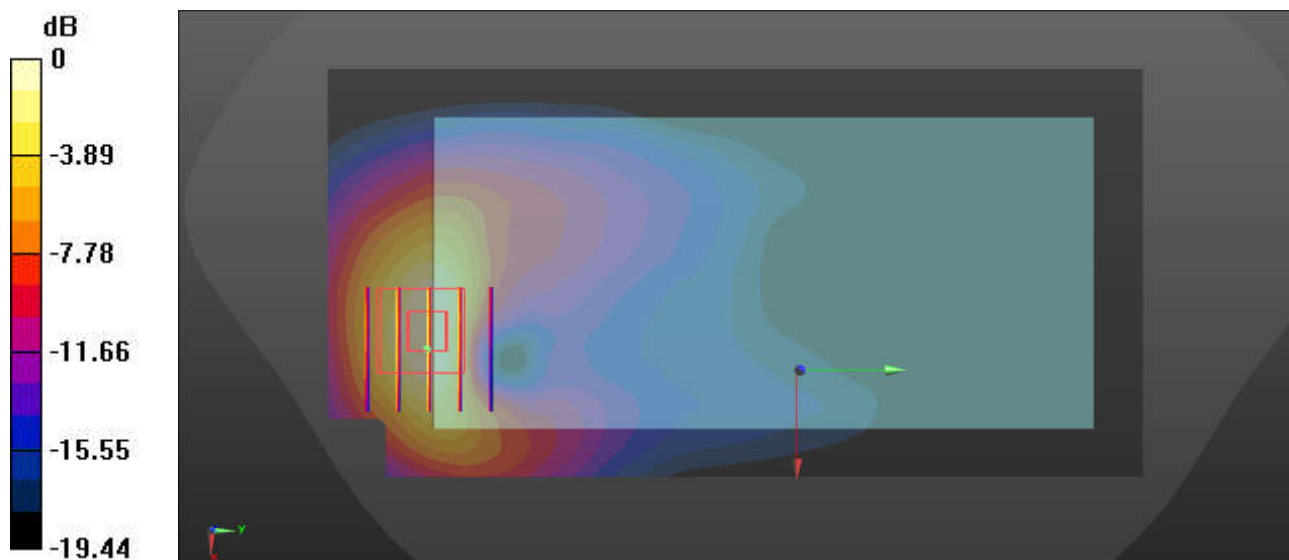
Ambient Temperature : 23.3 °C; Liquid Temperature : 22.7 °C

DASY5 Configuration:

- Probe: EX3DV4 - SN7627; ConvF(8.68, 8.68, 8.68); Calibrated: 2022/6/20
- Sensor-Surface: 1.4mm (Mechanical Surface Detection)
- Electronics: DAE4 Sn690; Calibrated: 2022/6/15
- Phantom: SAM Twin Phantom; Type: SAM Twin; Serial: TP-1644
- Measurement SW: DASY52, Version 52.10 (4); SEMCAD X Version 14.6.14 (7501)

Area Scan (71x141x1): Interpolated grid: dx=1.500 mm, dy=1.500 mm
Maximum value of SAR (interpolated) = 1.22 W/kg

Zoom Scan (5x5x7)/Cube 0: Measurement grid: dx=8mm, dy=8mm, dz=5mm
Reference Value = 3.691 V/m; Power Drift = -0.08 dB
Peak SAR (extrapolated) = 1.63 W/kg
SAR(1 g) = 0.901 W/kg; SAR(10 g) = 0.505 W/kg
Maximum value of SAR (measured) = 1.16 W/kg



0 dB = 1.16 W/kg = 0.64 dBW/kg

49_LTE Band 4_20M_QPSK_1RB_0Offset_Front_10mm_Ch20175

Communication System: UID 0, LTE-FDD (0); Frequency: 1732.5 MHz; Duty Cycle: 1:1
Medium: HSL_1750 Medium parameters used: $f = 1732.5$ MHz; $\sigma = 1.4$ S/m; $\epsilon_r = 40.756$; $\rho = 1000$ kg/m³

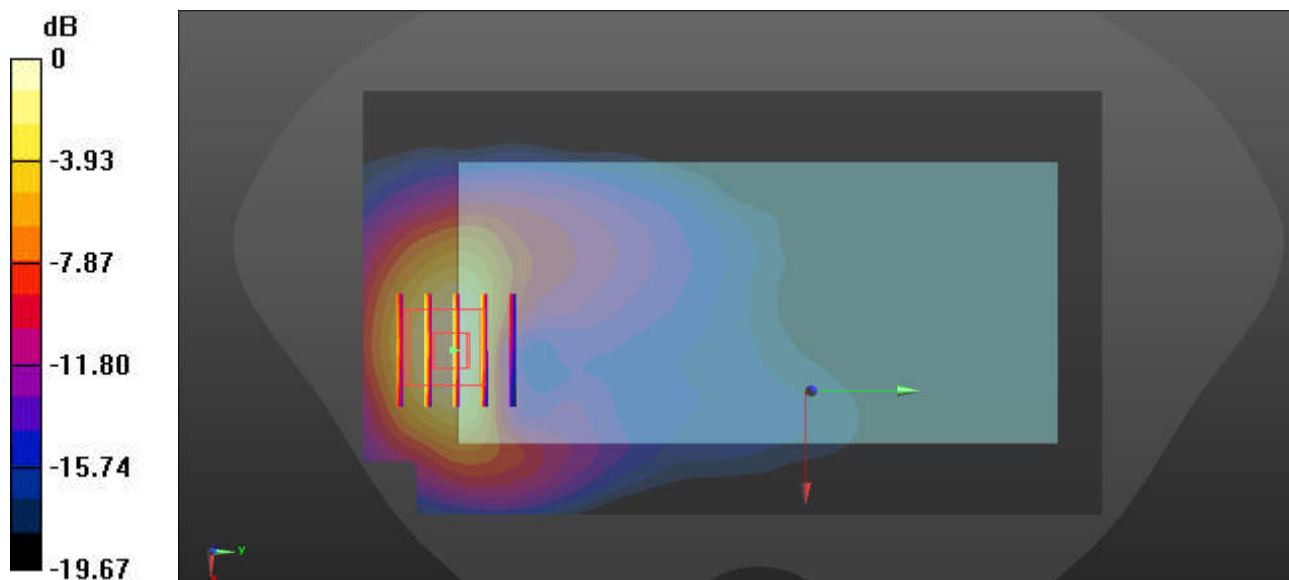
Ambient Temperature : 23.3 °C; Liquid Temperature : 22.7 °C

DASY5 Configuration:

- Probe: EX3DV4 - SN7627; ConvF(8.68, 8.68, 8.68); Calibrated: 2022/6/20
- Sensor-Surface: 1.4mm (Mechanical Surface Detection)
- Electronics: DAE4 Sn690; Calibrated: 2022/6/15
- Phantom: SAM Twin Phantom; Type: SAM Twin; Serial: TP-1644
- Measurement SW: DASY52, Version 52.10 (4); SEMCAD X Version 14.6.14 (7501)

Area Scan (81x141x1): Interpolated grid: dx=1.500 mm, dy=1.500 mm
Maximum value of SAR (interpolated) = 0.956 W/kg

Zoom Scan (5x5x7)/Cube 0: Measurement grid: dx=8mm, dy=8mm, dz=5mm
Reference Value = 6.688 V/m; Power Drift = -0.13 dB
Peak SAR (extrapolated) = 1.43 W/kg
SAR(1 g) = 0.829 W/kg; SAR(10 g) = 0.443 W/kg
Maximum value of SAR (measured) = 0.989 W/kg



0 dB = 0.989 W/kg = -0.05 dBW/kg

50_GSM1900_GPRS (4 Tx slots)_Front_10mm_Ch661

Communication System: UID 0, PCS (0); Frequency: 1880 MHz; Duty Cycle: 1:2.08

Medium: HSL_1900 Medium parameters used: $f = 1880$ MHz; $\sigma = 1.443$ S/m; $\epsilon_r = 39.682$; $\rho = 1000$ kg/m³

Ambient Temperature : 23.1 °C; Liquid Temperature : 22.6 °C

DASY5 Configuration:

- Probe: EX3DV4 - SN7627; ConvF(8.38, 8.38, 8.38); Calibrated: 2022/6/20
- Sensor-Surface: 1.4mm (Mechanical Surface Detection)
- Electronics: DAE4 Sn690; Calibrated: 2022/6/15
- Phantom: SAM Twin Phantom; Type: SAM Twin; Serial: TP-1644
- Measurement SW: DASY52, Version 52.10 (4); SEMCAD X Version 14.6.14 (7501)

Area Scan (81x141x1): Interpolated grid: dx=1.500 mm, dy=1.500 mm

Maximum value of SAR (interpolated) = 1.05 W/kg

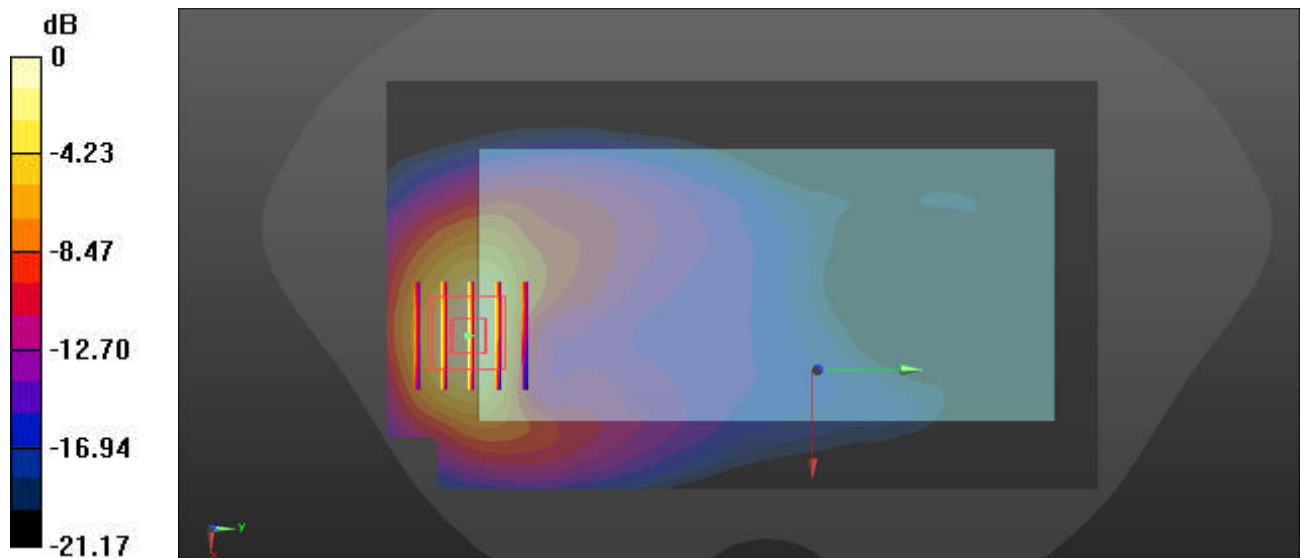
Zoom Scan (5x5x7)/Cube 0: Measurement grid: dx=8mm, dy=8mm, dz=5mm

Reference Value = 4.739 V/m; Power Drift = -0.09 dB

Peak SAR (extrapolated) = 1.26 W/kg

SAR(1 g) = 0.727 W/kg; SAR(10 g) = 0.386 W/kg

Maximum value of SAR (measured) = 1.08 W/kg



0 dB = 1.08 W/kg = 0.33 dBW/kg

51_WCDMA II_RMC 12.2Kbps_Front_10mm_Ch9400

Communication System: UID 0, WCDMA (0); Frequency: 1880 MHz; Duty Cycle: 1:1
Medium: HSL_1900 Medium parameters used: $f = 1880$ MHz; $\sigma = 1.443$ S/m; $\epsilon_r = 39.682$; $\rho = 1000$ kg/m³

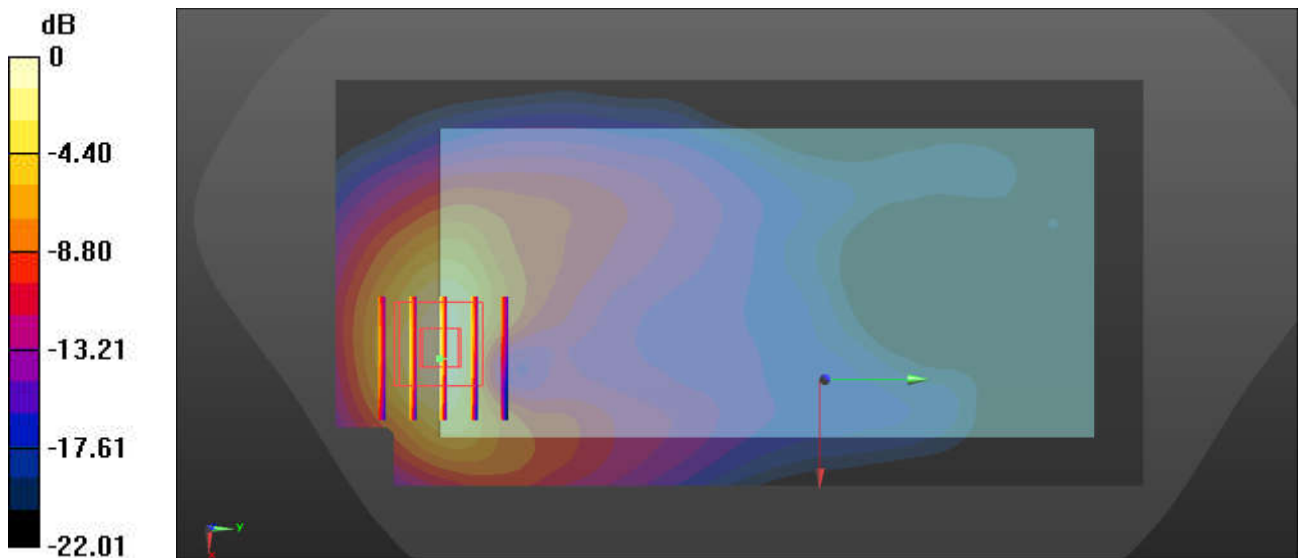
Ambient Temperature : 23.1 °C; Liquid Temperature : 22.6 °C

DASY5 Configuration:

- Probe: EX3DV4 - SN7627; ConvF(8.38, 8.38, 8.38); Calibrated: 2022/6/20
- Sensor-Surface: 1.4mm (Mechanical Surface Detection)
- Electronics: DAE4 Sn690; Calibrated: 2022/6/15
- Phantom: SAM Twin Phantom; Type: SAM Twin; Serial: TP-1644
- Measurement SW: DASY52, Version 52.10 (4); SEMCAD X Version 14.6.14 (7501)

Area Scan (71x141x1): Interpolated grid: dx=1.500 mm, dy=1.500 mm
Maximum value of SAR (interpolated) = 1.07 W/kg

Zoom Scan (5x5x7)/Cube 0: Measurement grid: dx=8mm, dy=8mm, dz=5mm
Reference Value = 2.556 V/m; Power Drift = -0.02 dB
Peak SAR (extrapolated) = 1.53 W/kg
SAR(1 g) = 0.870 W/kg; SAR(10 g) = 0.453 W/kg
Maximum value of SAR (measured) = 1.09 W/kg



0 dB = 1.09 W/kg = 0.17 dBW/kg

52_LTE Band 2_20M_QPSK_1RB_0Offset_Front_10mm_Ch18900

Communication System: UID 0, LTE-FDD (0); Frequency: 1880 MHz; Duty Cycle: 1:1
Medium: HSL_1900 Medium parameters used: $f = 1880$ MHz; $\sigma = 1.443$ S/m; $\epsilon_r = 39.682$; $\rho = 1000$ kg/m³

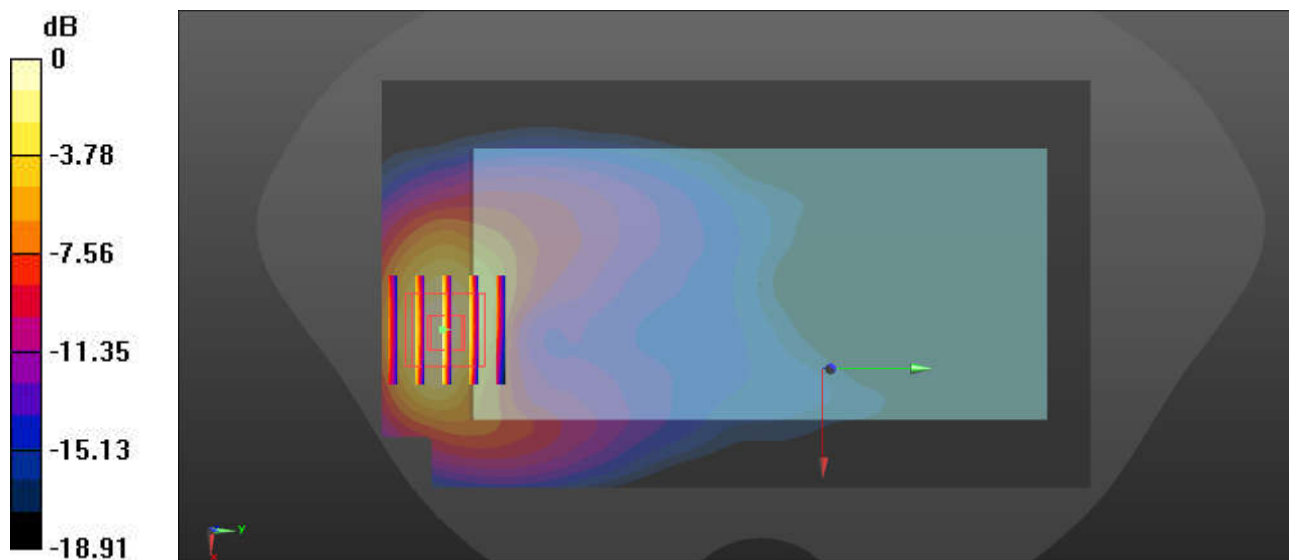
Ambient Temperature : 23.1 °C; Liquid Temperature : 22.6 °C

DASY5 Configuration:

- Probe: EX3DV4 - SN7627; ConvF(8.38, 8.38, 8.38); Calibrated: 2022/6/20
- Sensor-Surface: 1.4mm (Mechanical Surface Detection)
- Electronics: DAE4 Sn690; Calibrated: 2022/6/15
- Phantom: SAM Twin Phantom; Type: SAM Twin; Serial: TP-1644
- Measurement SW: DASY52, Version 52.10 (4); SEMCAD X Version 14.6.14 (7501)

Area Scan (81x141x1): Interpolated grid: dx=1.500 mm, dy=1.500 mm
Maximum value of SAR (interpolated) = 0.951 W/kg

Zoom Scan (5x5x7)/Cube 0: Measurement grid: dx=8mm, dy=8mm, dz=5mm
Reference Value = 2.673 V/m; Power Drift = -0.14 dB
Peak SAR (extrapolated) = 1.45 W/kg
SAR(1 g) = 0.831 W/kg; SAR(10 g) = 0.433 W/kg
Maximum value of SAR (measured) = 0.986 W/kg



0 dB = 0.986 W/kg = -0.06 dBW/kg

53_FR1 n2_20M_QPSK_25RB_13Offset_Front_10mm_Ch376000

Communication System: UID 0, 5G NR (0); Frequency: 1880 MHz; Duty Cycle: 1:1
Medium: HSL_1900 Medium parameters used: $f = 1880$ MHz; $\sigma = 1.443$ S/m; $\epsilon_r = 39.682$; $\rho = 1000$ kg/m³

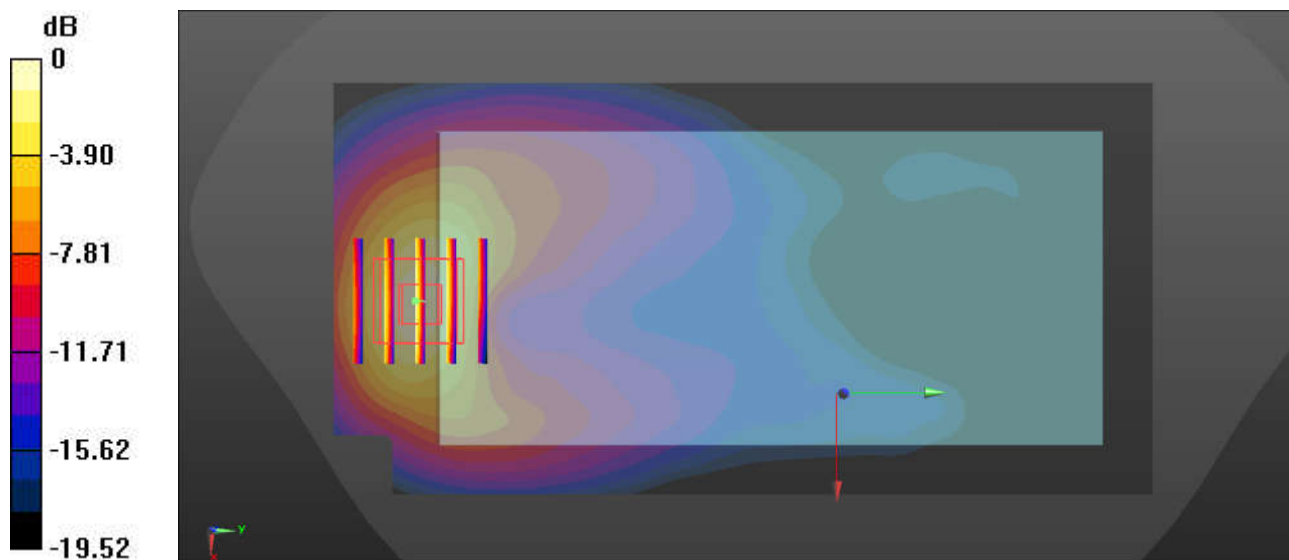
Ambient Temperature : 23.1 °C; Liquid Temperature : 22.6 °C

DASY5 Configuration:

- Probe: EX3DV4 - SN7627; ConvF(8.38, 8.38, 8.38); Calibrated: 2022/6/20
- Sensor-Surface: 1.4mm (Mechanical Surface Detection)
- Electronics: DAE4 Sn690; Calibrated: 2022/6/15
- Phantom: SAM Twin Phantom; Type: SAM Twin; Serial: TP-1644
- Measurement SW: DASY52, Version 52.10 (4); SEMCAD X Version 14.6.14 (7501)

Area Scan (71x141x1): Interpolated grid: dx=1.500 mm, dy=1.500 mm
Maximum value of SAR (interpolated) = 1.09 W/kg

Zoom Scan (5x5x7)/Cube 0: Measurement grid: dx=8mm, dy=8mm, dz=5mm
Reference Value = 2.914 V/m; Power Drift = -0.03 dB
Peak SAR (extrapolated) = 1.47 W/kg
SAR(1 g) = 0.857 W/kg; SAR(10 g) = 0.460 W/kg
Maximum value of SAR (measured) = 1.06 W/kg



0 dB = 1.06 W/kg = 0.25 dBW/kg

54_LTE Band 7_20M_QPSK_1RB_0Offset_Back_10mm_Ch21100

Communication System: UID 0, LTE-FDD (0); Frequency: 2535 MHz; Duty Cycle: 1:1
Medium: HSL_2600 Medium parameters used: $f = 2535$ MHz; $\sigma = 1.865$ S/m; $\epsilon_r = 38.436$; $\rho = 1000$ kg/m³

Ambient Temperature : 23.1 °C; Liquid Temperature : 22.6 °C

DASY5 Configuration:

- Probe: EX3DV4 - SN7627; ConvF(7.7, 7.7, 7.7); Calibrated: 2022/6/20
- Sensor-Surface: 1.4mm (Mechanical Surface Detection)
- Electronics: DAE4 Sn690; Calibrated: 2022/6/15
- Phantom: SAM Twin Phantom; Type: SAM Twin; Serial: TP-1644
- Measurement SW: DASY52, Version 52.10 (4); SEMCAD X Version 14.6.14 (7501)

Area Scan (101x171x1): Interpolated grid: dx=1.200 mm, dy=1.200 mm

Maximum value of SAR (interpolated) = 1.36 W/kg

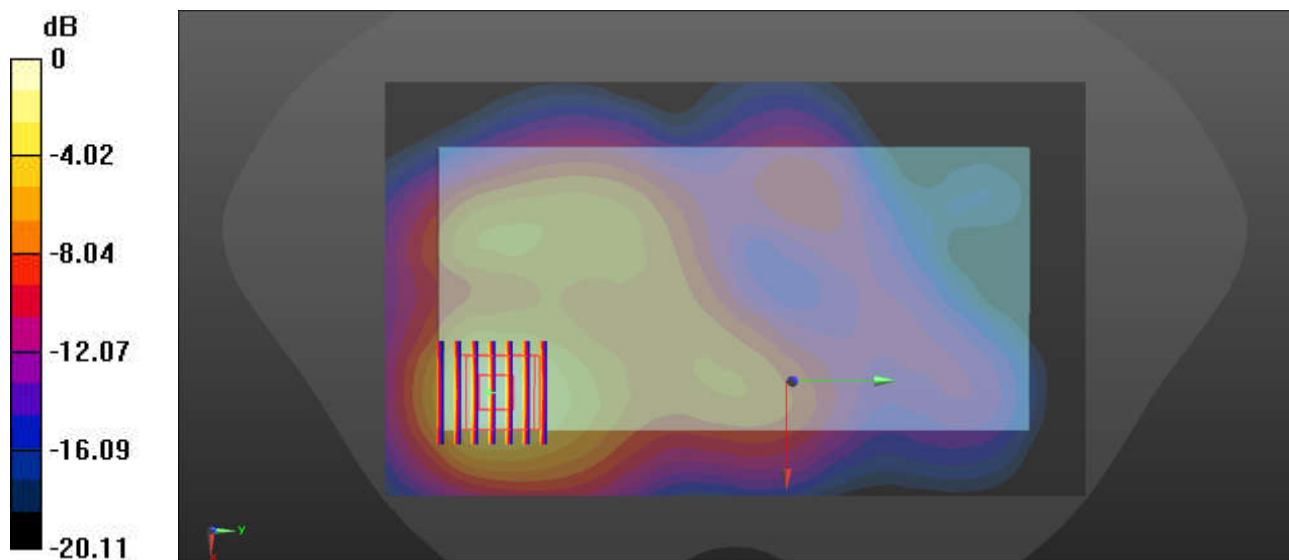
Zoom Scan (7x7x7)/Cube 0: Measurement grid: dx=5mm, dy=5mm, dz=5mm

Reference Value = 26.75 V/m; Power Drift = -0.03 dB

Peak SAR (extrapolated) = 1.65 W/kg

SAR(1 g) = 0.853 W/kg; SAR(10 g) = 0.434 W/kg

Maximum value of SAR (measured) = 1.35 W/kg



0 dB = 1.35 W/kg = 1.30 dBW/kg

56_LTE Band 41_20M_QPSK_1RB_0Offset_Back_10mm_Ch40620

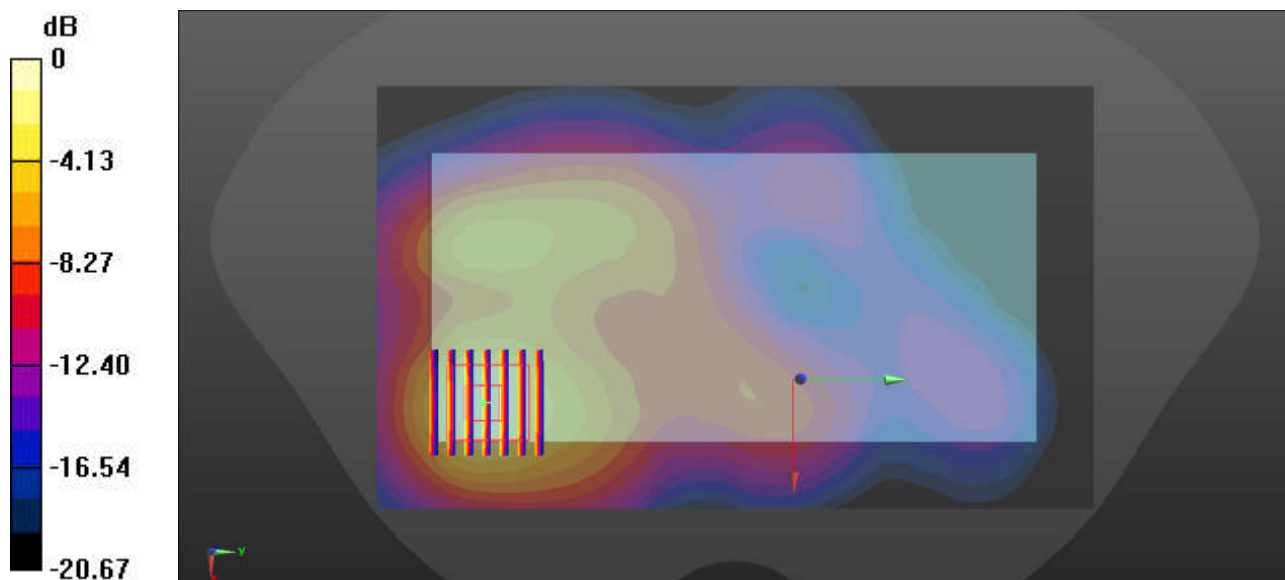
Communication System: UID 0, LTE-TDD (0); Frequency: 2593 MHz; Duty Cycle: 1:1.59
Medium: HSL_2600 Medium parameters used: $f = 2593$ MHz; $\sigma = 1.914$ S/m; $\epsilon_r = 38.215$; $\rho = 1000$ kg/m³
Ambient Temperature : 23.1 °C; Liquid Temperature : 22.6 °C

DASY5 Configuration:

- Probe: EX3DV4 - SN7627; ConvF(7.7, 7.7, 7.7); Calibrated: 2022/6/20
- Sensor-Surface: 1.4mm (Mechanical Surface Detection)
- Electronics: DAE4 Sn690; Calibrated: 2022/6/15
- Phantom: SAM Twin Phantom; Type: SAM Twin; Serial: TP-1644
- Measurement SW: DASY52, Version 52.10 (4); SEMCAD X Version 14.6.14 (7501)

Area Scan (101x171x1): Interpolated grid: dx=1.200 mm, dy=1.200 mm
Maximum value of SAR (interpolated) = 1.12 W/kg

Zoom Scan (7x7x7)/Cube 0: Measurement grid: dx=5mm, dy=5mm, dz=5mm
Reference Value = 23.85 V/m; Power Drift = 0.04 dB
Peak SAR (extrapolated) = 1.35 W/kg
SAR(1 g) = 0.688 W/kg; SAR(10 g) = 0.344 W/kg
Maximum value of SAR (measured) = 1.10 W/kg



0 dB = 1.10 W/kg = 0.41 dBW/kg

57_FR1 n7_20M_QPSK_25RB_13Offset_Back_10mm_Ch507000

Communication System: UID 0, 5G NR (0); Frequency: 2535 MHz; Duty Cycle: 1:1
Medium: HSL_2600 Medium parameters used: $f = 2535$ MHz; $\sigma = 1.865$ S/m; $\epsilon_r = 38.436$; $\rho = 1000$ kg/m³

Ambient Temperature : 23.1 °C; Liquid Temperature : 22.6 °C

DASY5 Configuration:

- Probe: EX3DV4 - SN7627; ConvF(7.7, 7.7, 7.7); Calibrated: 2022/6/20
- Sensor-Surface: 1.4mm (Mechanical Surface Detection)
- Electronics: DAE4 Sn690; Calibrated: 2022/6/15
- Phantom: SAM Twin Phantom; Type: SAM Twin; Serial: TP-1644
- Measurement SW: DASY52, Version 52.10 (4); SEMCAD X Version 14.6.14 (7501)

Area Scan (101x181x1): Interpolated grid: dx=1.200 mm, dy=1.200 mm

Maximum value of SAR (interpolated) = 1.53 W/kg

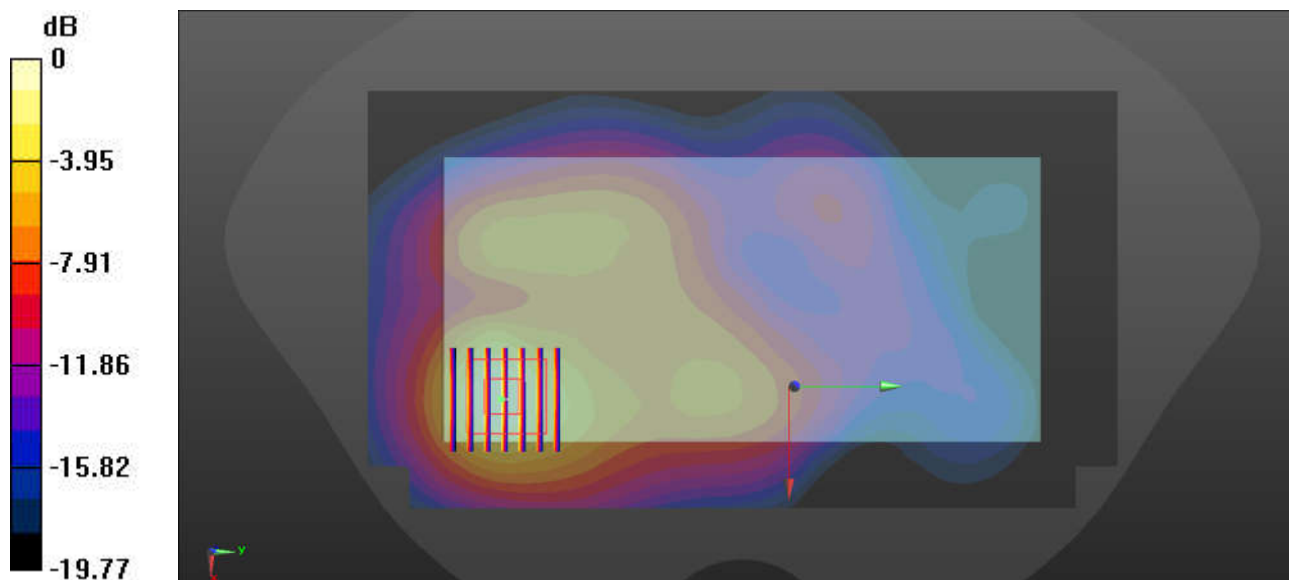
Zoom Scan (7x7x7)/Cube 0: Measurement grid: dx=5mm, dy=5mm, dz=5mm

Reference Value = 28.70 V/m; Power Drift = -0.14 dB

Peak SAR (extrapolated) = 1.78 W/kg

SAR(1 g) = 0.910 W/kg; SAR(10 g) = 0.459 W/kg

Maximum value of SAR (measured) = 1.46 W/kg



0 dB = 1.46 W/kg = 1.64 dBW/kg

58_FR1 n41_100M_QPSK_1RB_137Offset_Back_10mm_Ch518598

Communication System: UID 0, 5G NR (0); Frequency: 2592.99 MHz; Duty Cycle: 1:1
Medium: HSL_2600 Medium parameters used: $f = 2593$ MHz; $\sigma = 1.914$ S/m; $\epsilon_r = 38.215$; $\rho = 1000$ kg/m³

Ambient Temperature : 23.1 °C; Liquid Temperature : 22.6 °C

DASY5 Configuration:

- Probe: EX3DV4 - SN7627; ConvF(7.7, 7.7, 7.7); Calibrated: 2022/6/20
- Sensor-Surface: 1.4mm (Mechanical Surface Detection)
- Electronics: DAE4 Sn690; Calibrated: 2022/6/15
- Phantom: SAM Twin Phantom; Type: SAM Twin; Serial: TP-1644
- Measurement SW: DASY52, Version 52.10 (4); SEMCAD X Version 14.6.14 (7501)

Area Scan (91x161x1): Interpolated grid: dx=1.200 mm, dy=1.200 mm

Maximum value of SAR (interpolated) = 1.31 W/kg

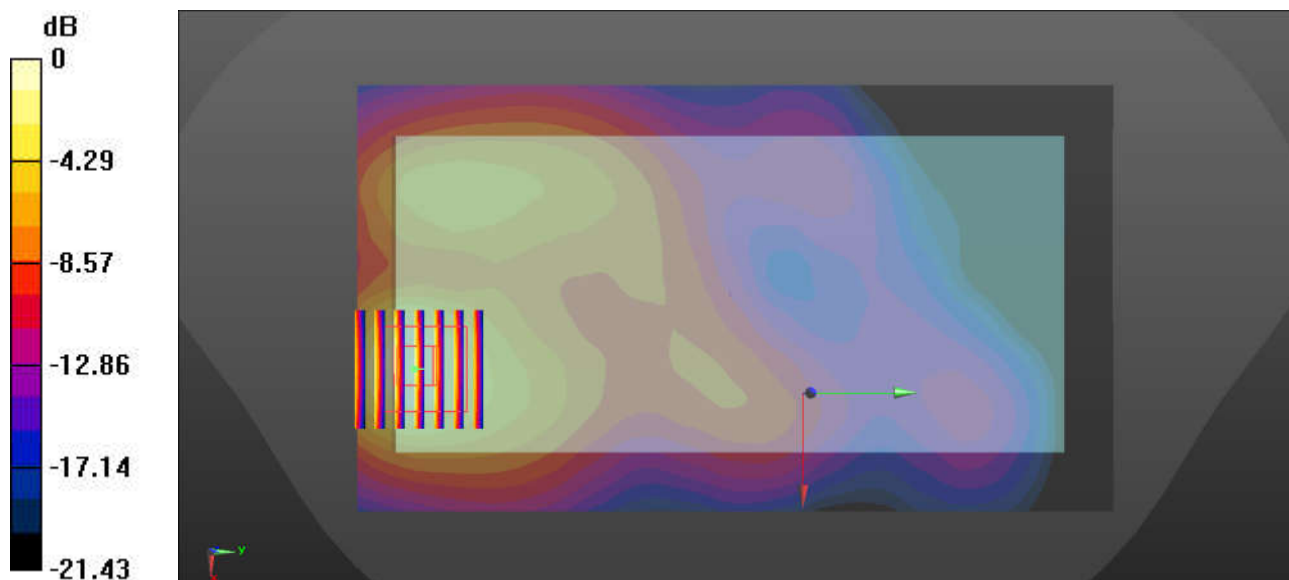
Zoom Scan (7x7x7)/Cube 0: Measurement grid: dx=5mm, dy=5mm, dz=5mm

Reference Value = 7.353 V/m; Power Drift = -0.15 dB

Peak SAR (extrapolated) = 1.58 W/kg

SAR(1 g) = 0.809 W/kg; SAR(10 g) = 0.397 W/kg

Maximum value of SAR (measured) = 1.29 W/kg



0 dB = 1.29 W/kg = 1.11 dBW/kg

59_FR1 n77_100M_QPSK_1RB_137Offset_Back_10mm_Ch656000

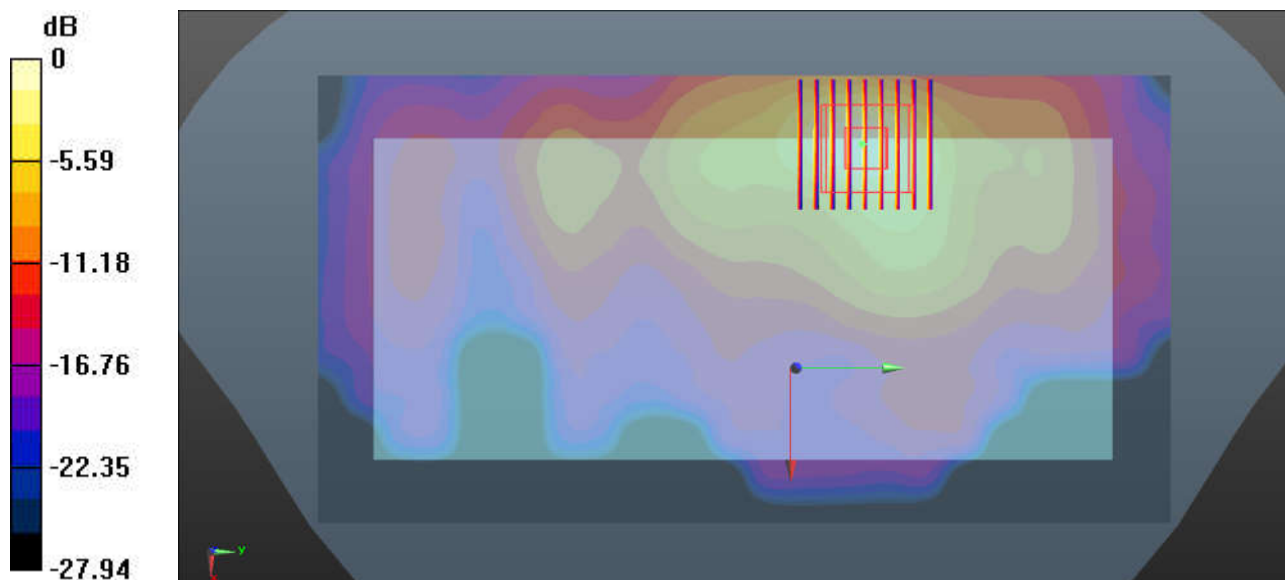
Communication System: UID 0, 5G NR (0); Frequency: 3840 MHz; Duty Cycle: 1:1
Medium: HSL_3900 Medium parameters used: $f = 3840$ MHz; $\sigma = 3.118$ S/m; $\epsilon_r = 38.443$; $\rho = 1000$ kg/m³
Ambient Temperature : 23.1 °C; Liquid Temperature : 22.8 °C

DASY5 Configuration:

- Probe: EX3DV4 - SN7706; ConvF(7.2, 7.2, 7.2); Calibrated: 2022/1/20
- Sensor-Surface: 1.4mm (Mechanical Surface Detection)
- Electronics: DAE4 Sn690; Calibrated: 2022/6/15
- Phantom: SAM Twin Phantom; Type: SAM Twin; Serial: TP-1644
- Measurement SW: DASY52, Version 52.10 (4); SEMCAD X Version 14.6.14 (7501)

Area Scan (111x211x1): Interpolated grid: dx=1.000 mm, dy=1.000 mm
Maximum value of SAR (interpolated) = 1.40 W/kg

Zoom Scan (9x9x7)/Cube 0: Measurement grid: dx=4mm, dy=4mm, dz=1.4mm
Reference Value = 5.242 V/m; Power Drift = 0.02 dB
Peak SAR (extrapolated) = 2.32 W/kg
SAR(1 g) = 1.04 W/kg; SAR(10 g) = 0.424 W/kg
Maximum value of SAR (measured) = 1.47 W/kg



0 dB = 1.47 W/kg = 1.67 dBW/kg

60_FR1 n78_100M_QPSK_135RB_69Offset_Back_10mm_Ch650000

Communication System: UID 0, 5G NR (0); Frequency: 3750 MHz; Duty Cycle: 1:1
Medium: HSL_3700 Medium parameters used: $f = 3750$ MHz; $\sigma = 3.03$ S/m; $\epsilon_r = 38.572$; $\rho = 1000$ kg/m³

Ambient Temperature : 23.2 °C; Liquid Temperature : 22.7 °C

DASY5 Configuration:

- Probe: EX3DV4 - SN7627; ConvF(7, 7, 7); Calibrated: 2022/6/20
- Sensor-Surface: 1.4mm (Mechanical Surface Detection)
- Electronics: DAE4 Sn690; Calibrated: 2022/6/15
- Phantom: SAM Twin Phantom; Type: SAM Twin; Serial: TP-1644
- Measurement SW: DASY52, Version 52.10 (4); SEMCAD X Version 14.6.14 (7501)

Area Scan (101x201x1): Interpolated grid: dx=1.000 mm, dy=1.000 mm

Maximum value of SAR (interpolated) = 1.75 W/kg

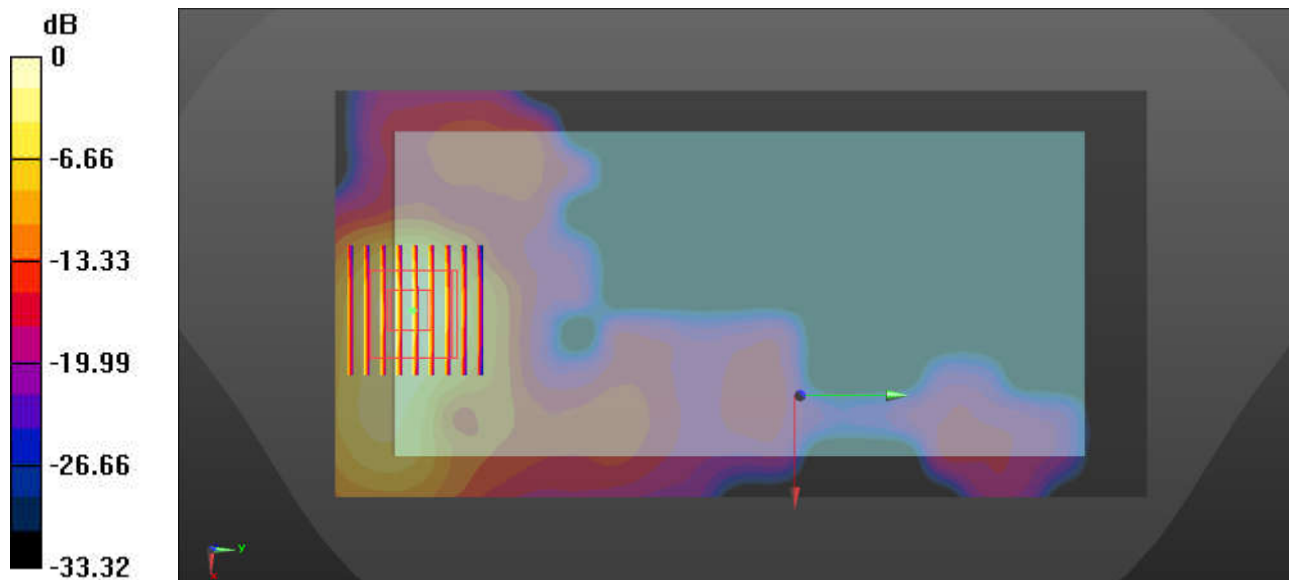
Zoom Scan (9x9x7)/Cube 0: Measurement grid: dx=4mm, dy=4mm, dz=1.4mm

Reference Value = 6.371 V/m; Power Drift = 0.07 dB

Peak SAR (extrapolated) = 2.24 W/kg

SAR(1 g) = 0.885 W/kg; SAR(10 g) = 0.378 W/kg

Maximum value of SAR (measured) = 1.69 W/kg



0 dB = 1.69 W/kg = 2.28 dBW/kg

61_Band 255_3.75K_QPSK_1RB_1Offset_Back_10mm_Ch261843

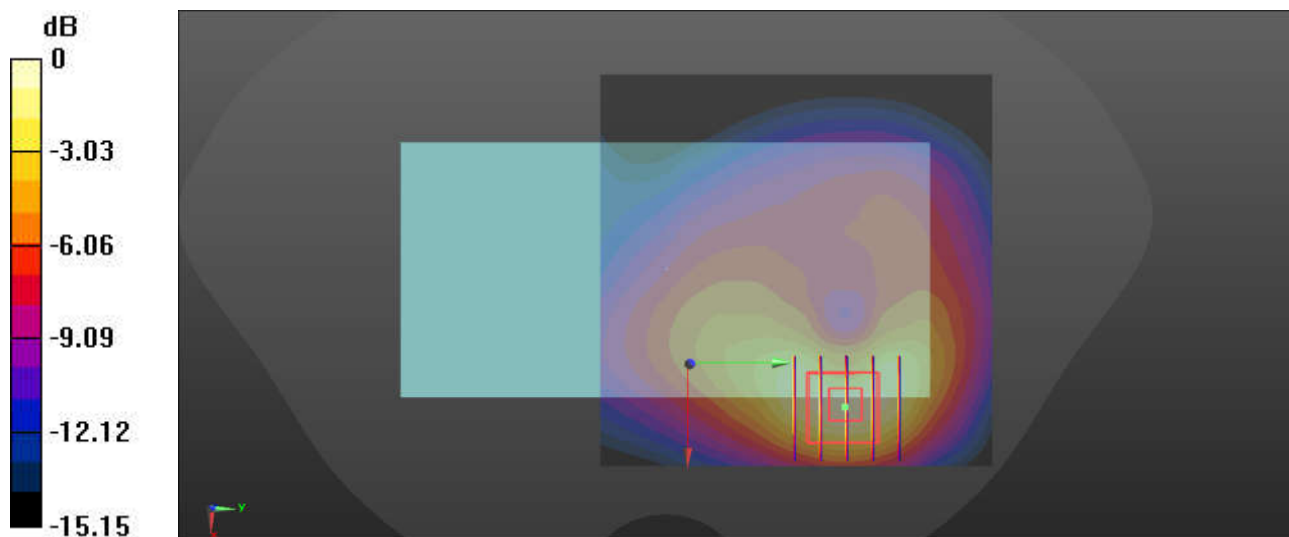
Communication System: UID 0, LTE (0); Frequency: 1659.9 MHz; Duty Cycle: 1:1
Medium: HSL_1650_221212 Medium parameters used: $f = 1660$ MHz; $\sigma = 1.266$ S/m; $\epsilon_r = 38.419$; $\rho = 1000$ kg/m³
Ambient Temperature : 23.2 °C; Liquid Temperature : 22.7 °C

DASY5 Configuration:

- Probe: EX3DV4 - SN7576; ConvF(9.05, 9.05, 9.05); Calibrated: 2022/7/28
- Sensor-Surface: 1.4mm (Mechanical Surface Detection)
- Electronics: DAE4 Sn1210; Calibrated: 2022/4/12
- Phantom: Twin-SAM1(P1aP2a20); Type: QD 000 P40 CD; Serial: TP:1670
- Measurement SW: DASY52, Version 52.10 (3); SEMCAD X Version 14.6.14 (7501)

Ch134616/Area Scan (81x81x1): Interpolated grid: dx=1.500 mm, dy=1.500 mm
Maximum value of SAR (interpolated) = 0.887 W/kg

Ch134616/Zoom Scan (5x5x7)/Cube 0: Measurement grid: dx=8mm, dy=8mm, dz=5mm
Reference Value = 11.17 V/m; Power Drift = 0.08 dB
Peak SAR (extrapolated) = 1.02 W/kg
SAR(1 g) = 0.612 W/kg; SAR(10 g) = 0.348 W/kg
Maximum value of SAR (measured) = 0.876 W/kg



0 dB = 0.876 W/kg = -0.57 dBW/kg

62_Band23_3.75K_QPSK_1RB_1Offset_Back_10mm_Ch25600

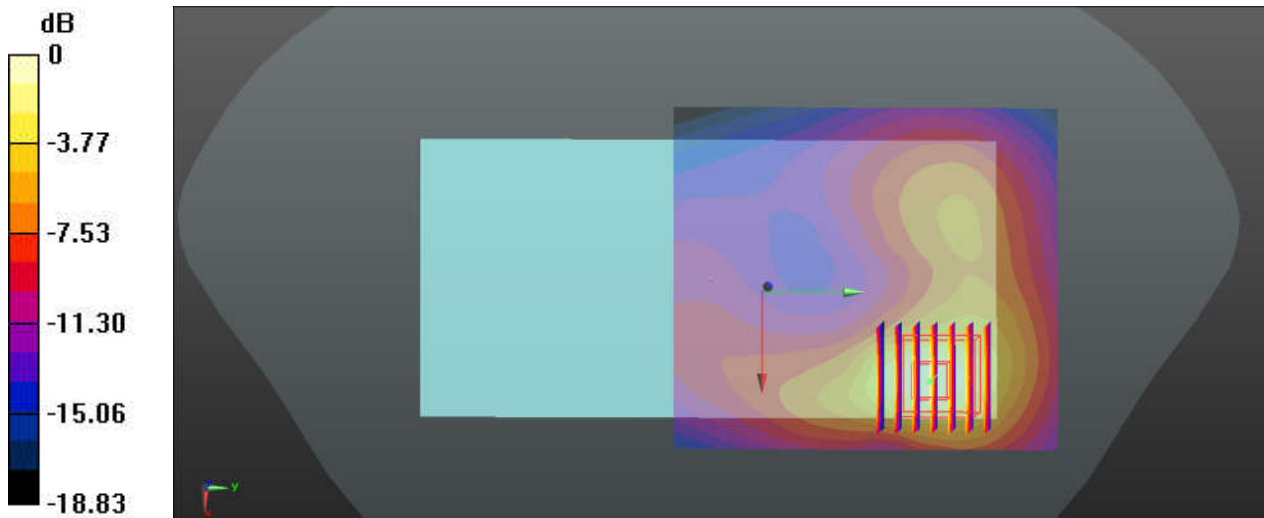
Communication System: UID 0, LTE (0); Frequency: 2010 MHz; Duty Cycle: 1:1.163
Medium: HSL_2000_221212 Medium parameters used: $f = 2010$ MHz; $\sigma = 1.462$ S/m; $\epsilon_r = 39.76$; $\rho = 1000$ kg/m³
Ambient Temperature : 23.5 °C; Liquid Temperature : 22.4 °C

DASY5 Configuration:

- Probe: EX3DV4 - SN7576; ConvF(8.39, 8.39, 8.39); Calibrated: 2022/7/28
- Sensor-Surface: 1.4mm (Mechanical Surface Detection)
- Electronics: DAE4 Sn1210; Calibrated: 2022/4/12
- Phantom: Twin-SAM1(P1aP2a20); Type: QD 000 P40 CD; Serial: TP:1670
- Measurement SW: DASY52, Version 52.10 (3); SEMCAD X Version 14.6.13 (7474)

Ch25600/Area Scan (81x91x1): Interpolated grid: dx=1.200 mm, dy=1.200 mm
Maximum value of SAR (interpolated) = 1.46 W/kg

Ch25600/Zoom Scan (7x7x7)/Cube 0: Measurement grid: dx=5mm, dy=5mm, dz=5mm
Reference Value = 10.02 V/m; Power Drift = -0.14 dB
Peak SAR (extrapolated) = 1.86 W/kg
SAR(1 g) = 1.02 W/kg; SAR(10 g) = 0.541 W/kg
Maximum value of SAR (measured) = 1.53 W/kg



0 dB = 1.53 W/kg

63_WLAN2.4GHz_802.11b 1Mbps_Back_10mm_Ch6

Communication System: UID 0, WLAN2.4GHz (0); Frequency: 2437 MHz; Duty Cycle: 1:1
Medium: HSL_2450 Medium parameters used: $f = 2437$ MHz; $\sigma = 1.812$ S/m; $\epsilon_r = 39.279$; $\rho = 1000$ kg/m³

Ambient Temperature : 23.1 °C; Liquid Temperature : 22.8 °C

DASY5 Configuration:

- Probe: EX3DV4 - SN7627; ConvF(8.03, 8.03, 8.03); Calibrated: 2022/6/20
- Sensor-Surface: 1.4mm (Mechanical Surface Detection)
- Electronics: DAE4 Sn690; Calibrated: 2022/6/15
- Phantom: SAM Twin Phantom; Type: SAM Twin; Serial: TP-1644
- Measurement SW: DASY52, Version 52.10 (4); SEMCAD X Version 14.6.14 (7501)

Area Scan (91x171x1): Interpolated grid: dx=1.200 mm, dy=1.200 mm

Maximum value of SAR (interpolated) = 0.419 W/kg

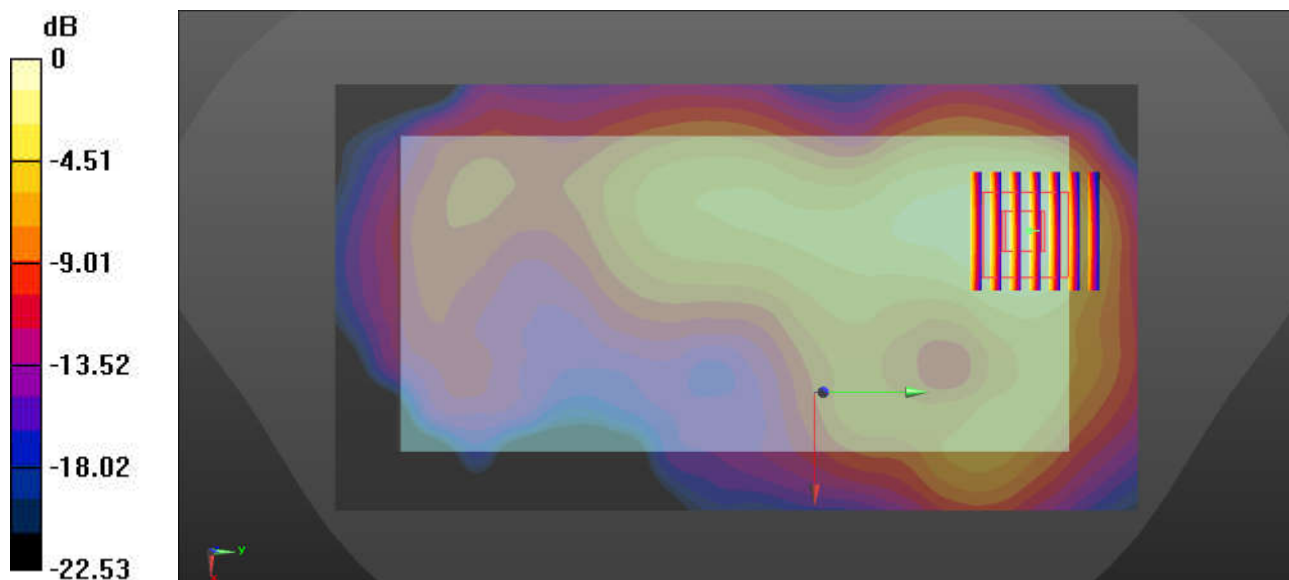
Zoom Scan (7x7x7)/Cube 0: Measurement grid: dx=5mm, dy=5mm, dz=5mm

Reference Value = 9.572 V/m; Power Drift = -0.03 dB

Peak SAR (extrapolated) = 0.498 W/kg

SAR(1 g) = 0.261 W/kg; SAR(10 g) = 0.138 W/kg

Maximum value of SAR (measured) = 0.408 W/kg



0 dB = 0.408 W/kg = -3.89 dBW/kg

64_Bluetooth_1Mbps_Back_10mm_Ch0

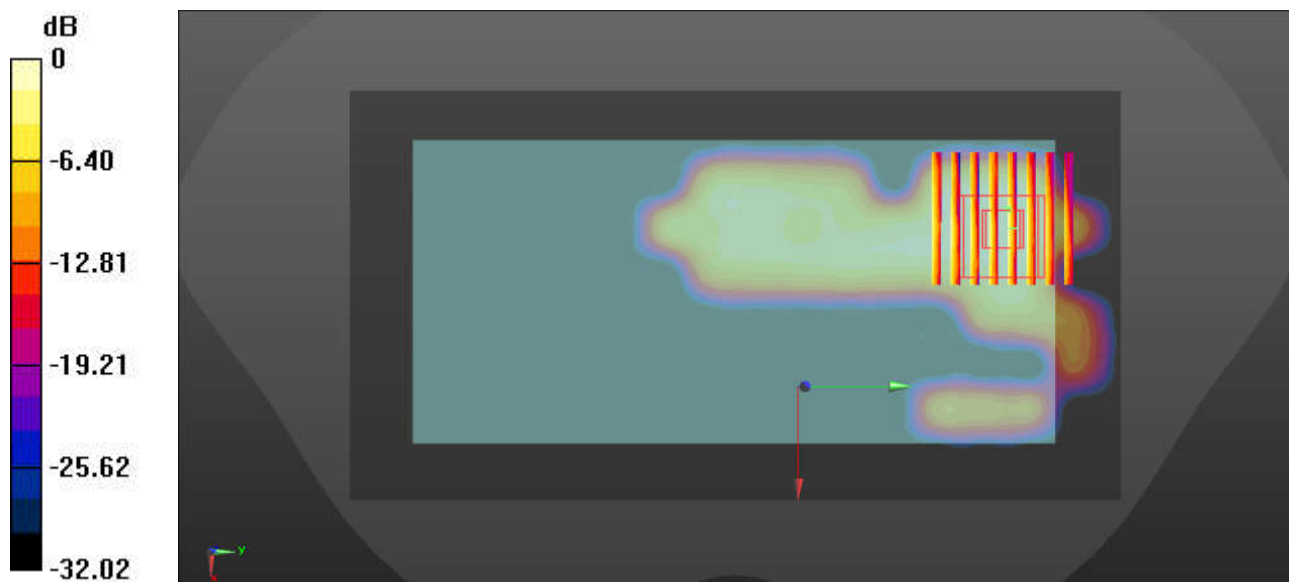
Communication System: UID 0, Bluetooth (0); Frequency: 2402 MHz; Duty Cycle: 1:1.302
Medium: HSL_2450 Medium parameters used: $f = 2402$ MHz; $\sigma = 1.787$ S/m; $\epsilon_r = 39.355$; $\rho = 1000$ kg/m³
Ambient Temperature : 23.1 °C; Liquid Temperature : 22.8 °C

DASY5 Configuration:

- Probe: EX3DV4 - SN7627; ConvF(8.03, 8.03, 8.03); Calibrated: 2022/6/20
- Sensor-Surface: 1.4mm (Mechanical Surface Detection)
- Electronics: DAE4 Sn690; Calibrated: 2022/6/15
- Phantom: SAM Twin Phantom; Type: SAM Twin; Serial: TP-1644
- Measurement SW: DASY52, Version 52.10 (4); SEMCAD X Version 14.6.14 (7501)

Area Scan (91x171x1): Interpolated grid: dx=1.200 mm, dy=1.200 mm.
Maximum value of SAR (interpolated) = 0.0843 W/kg

Zoom Scan (8x8x7)/Cube 0: Measurement grid: dx=5mm, dy=5mm, dz=5mm
Reference Value = 2.299 V/m; Power Drift = 0.03 dB
Peak SAR (extrapolated) = 0.0690 W/kg
SAR(1 g) = 0.035 W/kg; SAR(10 g) = 0.017 W/kg
Maximum value of SAR (measured) = 0.0549 W/kg



0 dB = 0.0549 W/kg = -12.60 dBW/kg

65_WLAN5GHz_802.11n-HT40 MCS0_Back_10mm_Ch54

Communication System: UID 0, WLAN5GHz (0); Frequency: 5270 MHz; Duty Cycle: 1:1.054
Medium: HSL_5000 Medium parameters used: $f = 5270$ MHz; $\sigma = 4.636$ S/m; $\epsilon_r = 36.211$; $\rho = 1000$ kg/m³

Ambient Temperature : 23.2 °C; Liquid Temperature : 22.7 °C

DASY5 Configuration:

- Probe: EX3DV4 - SN7627; ConvF(5.64, 5.64, 5.64); Calibrated: 2022/6/20
- Sensor-Surface: 1.4mm (Mechanical Surface Detection)
- Electronics: DAE4 Sn690; Calibrated: 2022/6/15
- Phantom: SAM Twin Phantom; Type: SAM Twin; Serial: TP-1644
- Measurement SW: DASY52, Version 52.10 (4); SEMCAD X Version 14.6.14 (7501)

Area Scan (111x201x1): Interpolated grid: dx=1.000 mm, dy=1.000 mm

Maximum value of SAR (interpolated) = 2.12 W/kg

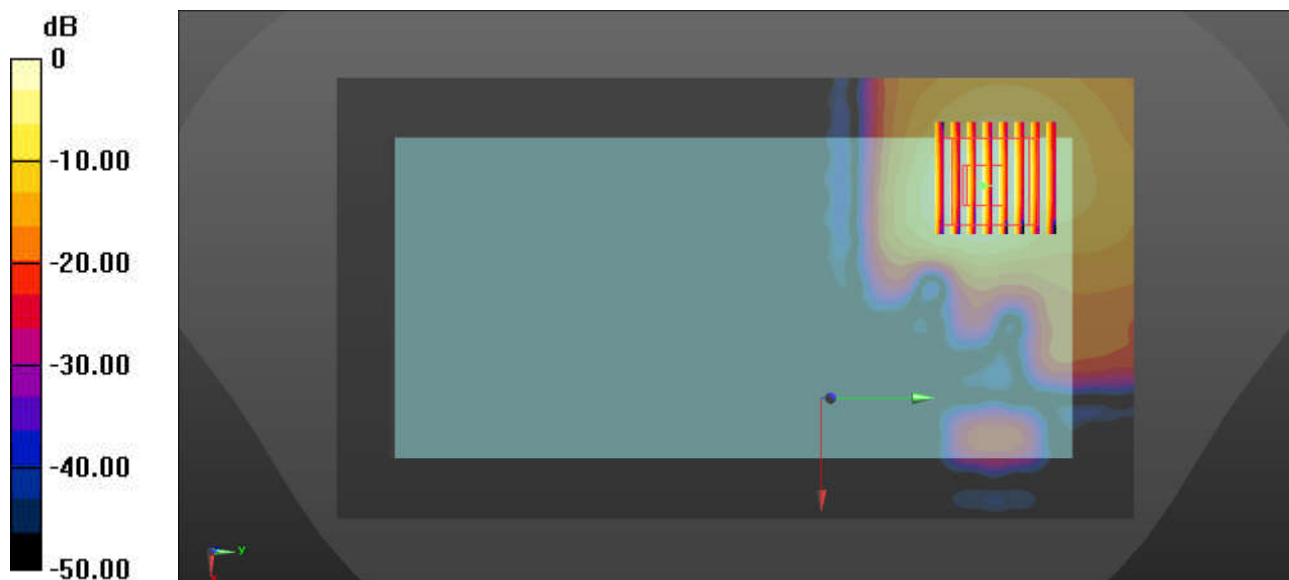
Zoom Scan (8x8x7)/Cube 0: Measurement grid: dx=4mm, dy=4mm, dz=1.4mm

Reference Value = 0 V/m; Power Drift = 0.01 dB

Peak SAR (extrapolated) = 3.04 W/kg

SAR(1 g) = 0.836 W/kg; SAR(10 g) = 0.327 W/kg

Maximum value of SAR (measured) = 2.07 W/kg



0 dB = 2.07 W/kg = 3.16 dBW/kg

66_WLAN5GHz_802.11ac-VHT80 MCS0_Back_10mm_Ch138

Communication System: UID 0, WLAN5GHz (0); Frequency: 5690 MHz; Duty Cycle: 1:1.107
Medium: HSL_5000 Medium parameters used: $f = 5690$ MHz; $\sigma = 5.068$ S/m; $\epsilon_r = 35.734$; $\rho = 1000$ kg/m³

Ambient Temperature : 23.3 °C; Liquid Temperature : 22.8 °C

DASY5 Configuration:

- Probe: EX3DV4 - SN7627; ConvF(4.9, 4.9, 4.9); Calibrated: 2022/6/20
- Sensor-Surface: 1.4mm (Mechanical Surface Detection)
- Electronics: DAE4 Sn690; Calibrated: 2022/6/15
- Phantom: SAM Twin Phantom; Type: SAM Twin; Serial: TP-1644
- Measurement SW: DASY52, Version 52.10 (4); SEMCAD X Version 14.6.14 (7501)

Area Scan (111x201x1): Interpolated grid: dx=1.000 mm, dy=1.000 mm

Maximum value of SAR (interpolated) = 1.77 W/kg

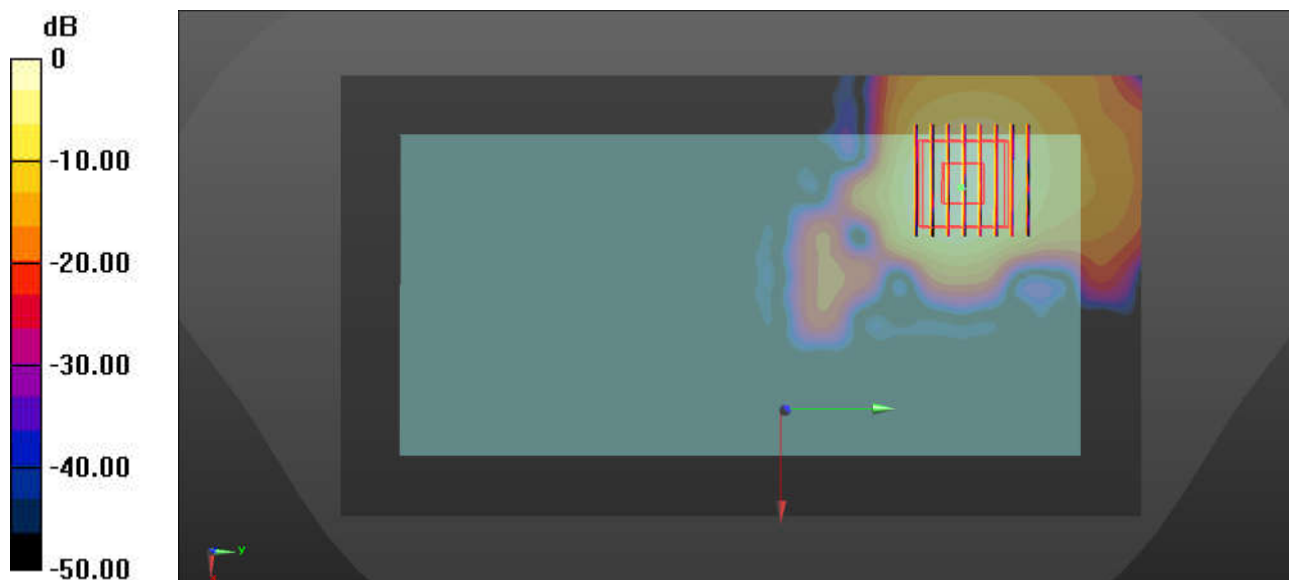
Zoom Scan (8x8x7)/Cube 0: Measurement grid: dx=4mm, dy=4mm, dz=1.4mm

Reference Value = 0 V/m; Power Drift = 0.01 dB

Peak SAR (extrapolated) = 2.61 W/kg

SAR(1 g) = 0.749 W/kg; SAR(10 g) = 0.250 W/kg

Maximum value of SAR (measured) = 1.70 W/kg



0 dB = 1.70 W/kg = 2.30 dBW/kg

67_WLAN5GHz_802.11ac-VHT80 MCS0_Back_10mm_Ch155

Communication System: UID 0, WLAN5GHz (0); Frequency: 5775 MHz; Duty Cycle: 1:1.107
Medium: HSL_5000 Medium parameters used: $f = 5775$ MHz; $\sigma = 5.209$ S/m; $\epsilon_r = 35.681$; $\rho = 1000$ kg/m³

Ambient Temperature : 23.3 °C; Liquid Temperature : 22.8 °C

DASY5 Configuration:

- Probe: EX3DV4 - SN7627; ConvF(4.9, 4.9, 4.9); Calibrated: 2022/6/20
- Sensor-Surface: 1.4mm (Mechanical Surface Detection)
- Electronics: DAE4 Sn690; Calibrated: 2022/6/15
- Phantom: SAM Twin Phantom; Type: SAM Twin; Serial: TP-1644
- Measurement SW: DASY52, Version 52.10 (4); SEMCAD X Version 14.6.14 (7501)

Area Scan (111x201x1): Interpolated grid: dx=1.000 mm, dy=1.000 mm

Maximum value of SAR (interpolated) = 1.97 W/kg

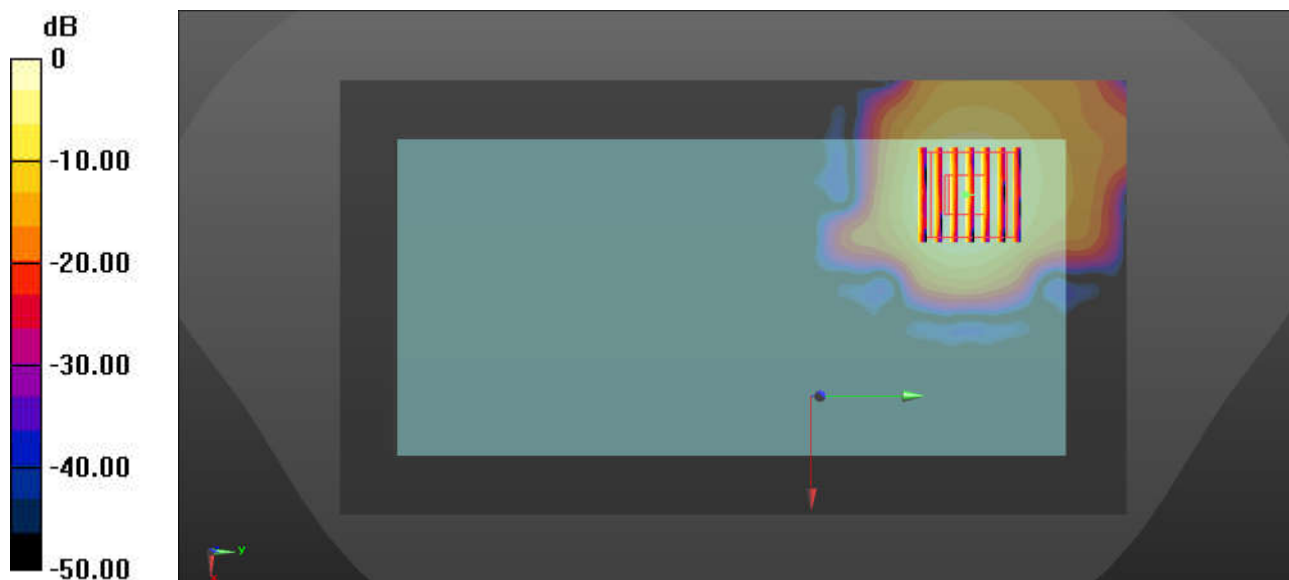
Zoom Scan (7x7x7)/Cube 0: Measurement grid: dx=4mm, dy=4mm, dz=1.4mm

Reference Value = 11.71 V/m; Power Drift = 0.19 dB

Peak SAR (extrapolated) = 3.02 W/kg

SAR(1 g) = 0.822 W/kg; SAR(10 g) = 0.268 W/kg

Maximum value of SAR (measured) = 1.94 W/kg



0 dB = 1.94 W/kg = 2.88 dBW/kg

68_WCDMA IV_RMC 12.2Kbps_Bottom Side_0mm_Ch1513

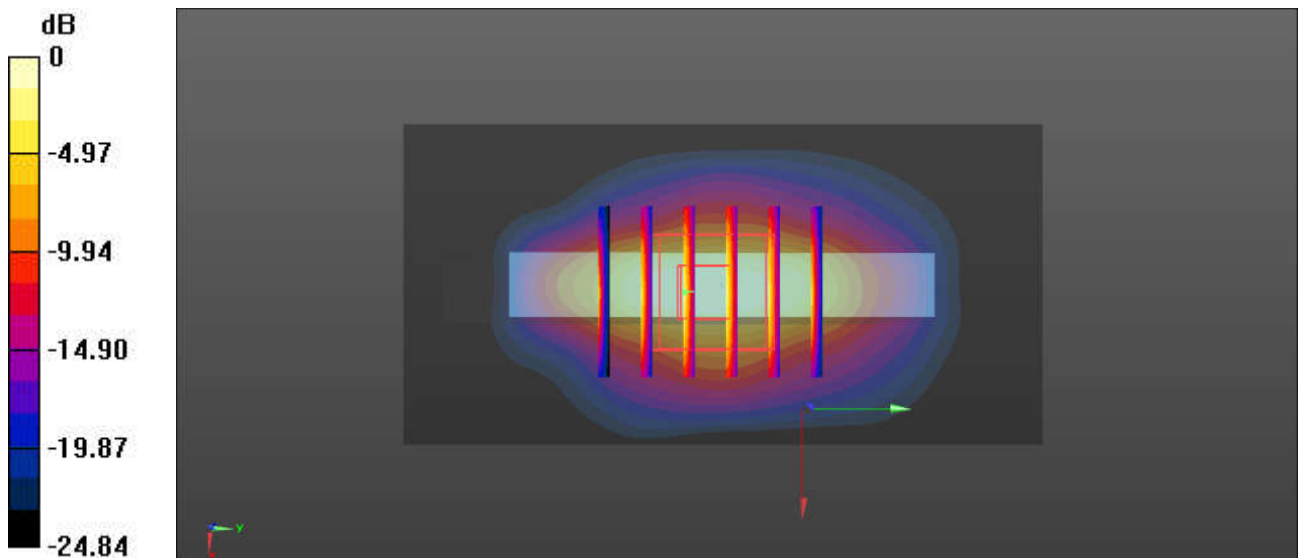
Communication System: UID 0, WCDMA (0); Frequency: 1752.6 MHz; Duty Cycle: 1:1
 Medium: HSL_1750 Medium parameters used: $f = 1752.6$ MHz; $\sigma = 1.411$ S/m; $\epsilon_r = 40.666$; $\rho = 1000$ kg/m³
 Ambient Temperature : 23.3 °C; Liquid Temperature : 22.7 °C

DASY5 Configuration:

- Probe: EX3DV4 - SN7627; ConvF(8.68, 8.68, 8.68); Calibrated: 2022/6/20
- Sensor-Surface: 1.4mm (Mechanical Surface Detection)
- Electronics: DAE4 Sn690; Calibrated: 2022/6/15
- Phantom: SAM Twin Phantom; Type: SAM Twin; Serial: TP-1644
- Measurement SW: DASY52, Version 52.10 (4); SEMCAD X Version 14.6.14 (7501)

Area Scan (41x81x1): Interpolated grid: dx=1.500 mm, dy=1.500 mm
 Maximum value of SAR (interpolated) = 9.39 W/kg

Zoom Scan (5x6x7)/Cube 0: Measurement grid: dx=8mm, dy=8mm, dz=5mm
 Reference Value = 4.475 V/m; Power Drift = 0.06 dB
 Peak SAR (extrapolated) = 11.8 W/kg
SAR(1 g) = 5.36 W/kg; SAR(10 g) = 2.42 W/kg
 Maximum value of SAR (measured) = 9.74 W/kg



0 dB = 9.74 W/kg = 9.89 dBW/kg

69_LTE Band 4_20M_QPSK_1RB_0Offset_Bottom Side_0mm_Ch20175

Communication System: UID 0, LTE-FDD (0); Frequency: 1732.5 MHz; Duty Cycle: 1:1
Medium: HSL_1750 Medium parameters used: $f = 1732.5$ MHz; $\sigma = 1.4$ S/m; $\epsilon_r = 40.756$; $\rho = 1000$ kg/m³

Ambient Temperature : 23.3 °C; Liquid Temperature : 22.7 °C

DASY5 Configuration:

- Probe: EX3DV4 - SN7627; ConvF(8.68, 8.68, 8.68); Calibrated: 2022/6/20
- Sensor-Surface: 1.4mm (Mechanical Surface Detection)
- Electronics: DAE4 Sn690; Calibrated: 2022/6/15
- Phantom: SAM Twin Phantom; Type: SAM Twin; Serial: TP-1644
- Measurement SW: DASY52, Version 52.10 (4); SEMCAD X Version 14.6.14 (7501)

Area Scan (41x81x1): Interpolated grid: dx=1.500 mm, dy=1.500 mm

Maximum value of SAR (interpolated) = 7.24 W/kg

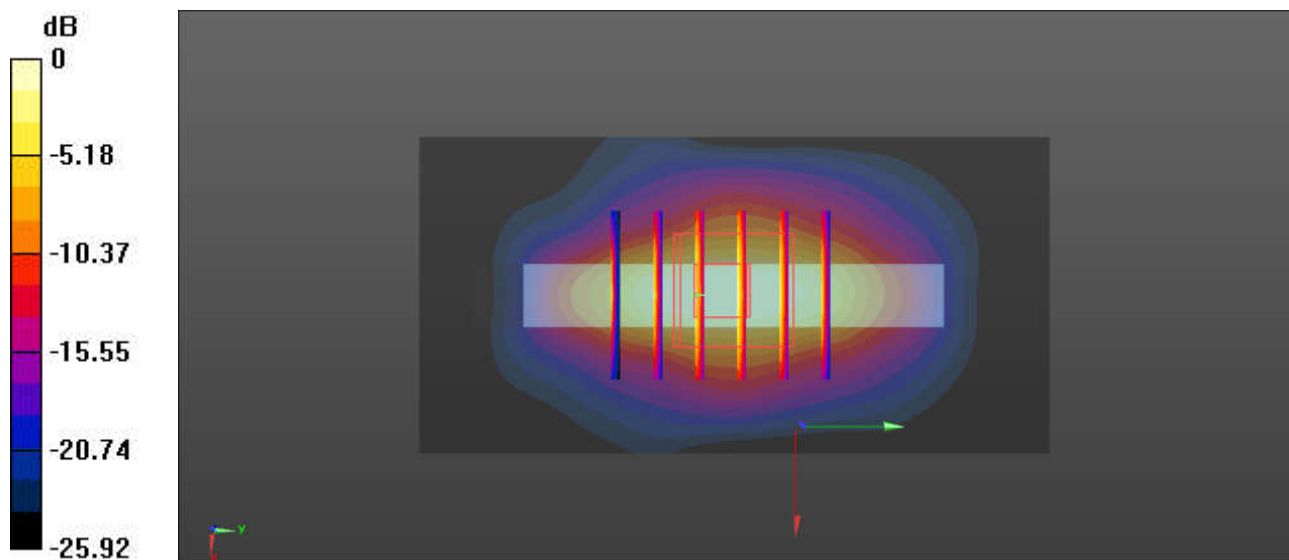
Zoom Scan (5x6x7)/Cube 0: Measurement grid: dx=8mm, dy=8mm, dz=5mm

Reference Value = 4.301 V/m; Power Drift = 0.08 dB

Peak SAR (extrapolated) = 9.14 W/kg

SAR(1 g) = 4.2 W/kg; SAR(10 g) = 1.91 W/kg

Maximum value of SAR (measured) = 7.43 W/kg



0 dB = 7.43 W/kg = 8.71 dBW/kg

70_GSM1900_GPRS (4 Tx slots)_Bottom Side_0mm_Ch512

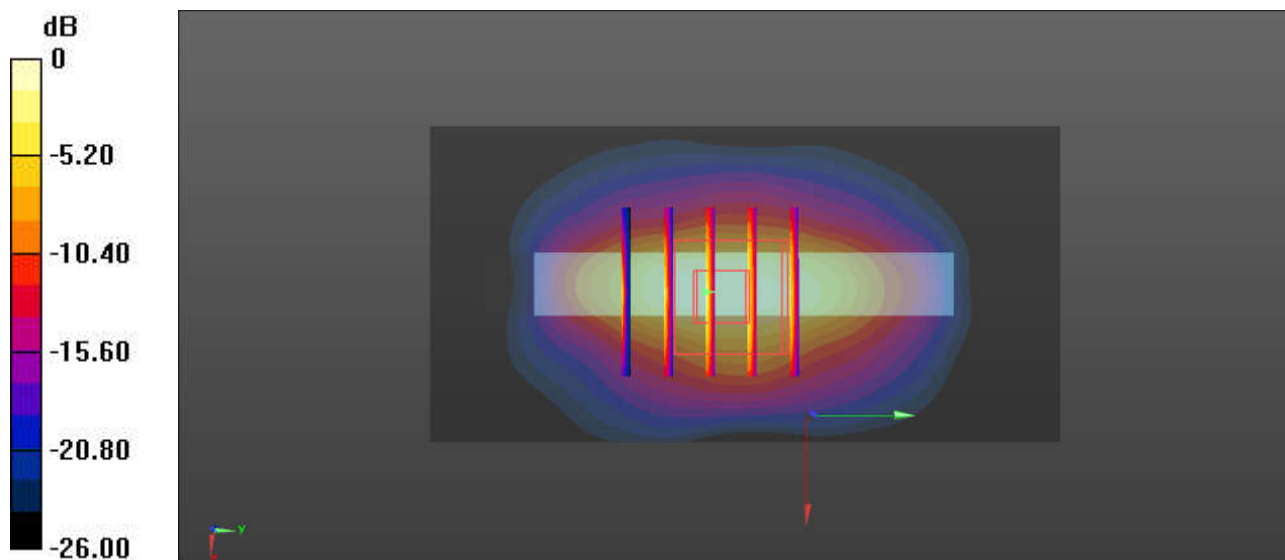
Communication System: UID 0, PCS (0); Frequency: 1850.2 MHz; Duty Cycle: 1:2.08
Medium: HSL_1900 Medium parameters used: $f = 1850.2$ MHz; $\sigma = 1.426$ S/m; $\epsilon_r = 39.727$; $\rho = 1000$ kg/m³
Ambient Temperature : 23.1 °C; Liquid Temperature : 22.6 °C

DASY5 Configuration:

- Probe: EX3DV4 - SN7627; ConvF(8.38, 8.38, 8.38); Calibrated: 2022/6/20
- Sensor-Surface: 1.4mm (Mechanical Surface Detection)
- Electronics: DAE4 Sn690; Calibrated: 2022/6/15
- Phantom: SAM Twin Phantom; Type: SAM Twin; Serial: TP-1644
- Measurement SW: DASY52, Version 52.10 (4); SEMCAD X Version 14.6.14 (7501)

Area Scan (41x81x1): Interpolated grid: dx=1.500 mm, dy=1.500 mm
Maximum value of SAR (interpolated) = 7.49 W/kg

Zoom Scan (5x5x7)/Cube 0: Measurement grid: dx=8mm, dy=8mm, dz=5mm
Reference Value = 4.105 V/m; Power Drift = -0.06 dB
Peak SAR (extrapolated) = 9.57 W/kg
SAR(1 g) = 4.25 W/kg; SAR(10 g) = 1.89 W/kg
Maximum value of SAR (measured) = 7.96 W/kg



0 dB = 7.96 W/kg = 9.01 dBW/kg

71_WCDMA II_RMC 12.2Kbps_Bottom Side_0mm_Ch9262

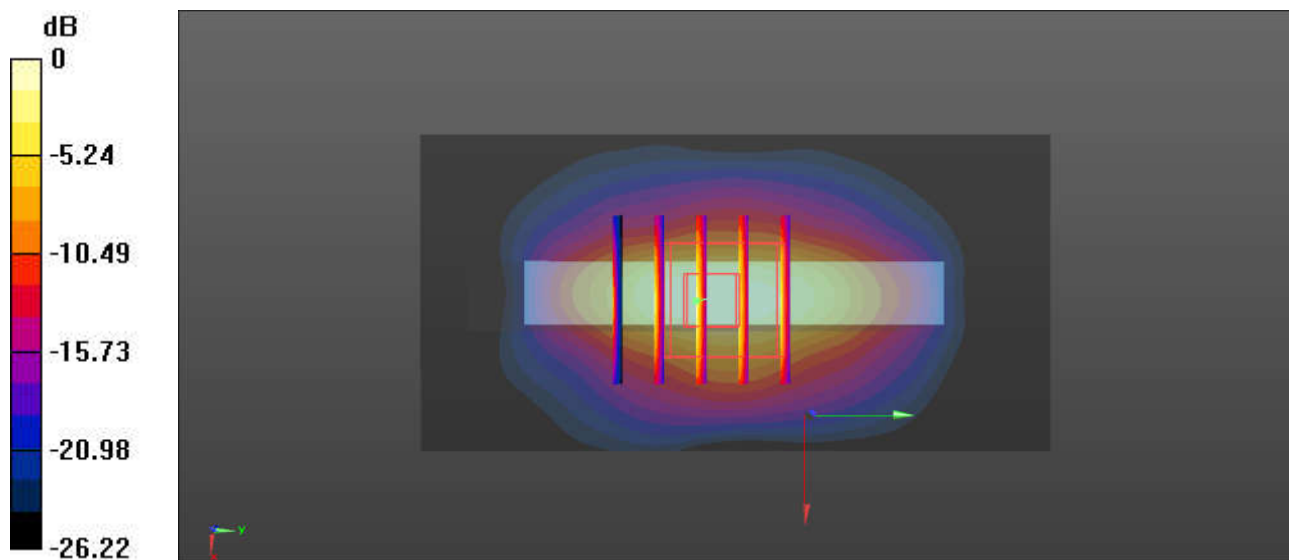
Communication System: UID 0, WCDMA (0); Frequency: 1852.4 MHz; Duty Cycle: 1:1
Medium: HSL_1900 Medium parameters used: $f = 1852.4$ MHz; $\sigma = 1.427$ S/m; $\epsilon_r = 39.721$; $\rho = 1000$ kg/m³
Ambient Temperature : 23.1 °C; Liquid Temperature : 22.6 °C

DASY5 Configuration:

- Probe: EX3DV4 - SN7627; ConvF(8.38, 8.38, 8.38); Calibrated: 2022/6/20
- Sensor-Surface: 1.4mm (Mechanical Surface Detection)
- Electronics: DAE4 Sn690; Calibrated: 2022/6/15
- Phantom: SAM Twin Phantom; Type: SAM Twin; Serial: TP-1644
- Measurement SW: DASY52, Version 52.10 (4); SEMCAD X Version 14.6.14 (7501)

Area Scan (41x81x1): Interpolated grid: dx=1.500 mm, dy=1.500 mm
Maximum value of SAR (interpolated) = 8.12 W/kg

Zoom Scan (5x5x7)/Cube 0: Measurement grid: dx=8mm, dy=8mm, dz=5mm
Reference Value = 3.688 V/m; Power Drift = 0.03 dB
Peak SAR (extrapolated) = 10.5 W/kg
SAR(1 g) = 4.61 W/kg; SAR(10 g) = 2.05 W/kg
Maximum value of SAR (measured) = 8.67 W/kg



0 dB = 8.67 W/kg = 9.38 dBW/kg

72_LTE Band 2_20M_QPSK_1RB_0Offset_Bottom Side_0mm_Ch18700

Communication System: UID 0, LTE-FDD (0); Frequency: 1860 MHz;Duty Cycle: 1:1
Medium: HSL_1900 Medium parameters used: $f = 1860$ MHz; $\sigma = 1.431$ S/m; $\epsilon_r = 39.709$; $\rho = 1000$ kg/m³

Ambient Temperature : 23.1 °C; Liquid Temperature : 22.6 °C

DASY5 Configuration:

- Probe: EX3DV4 - SN7627; ConvF(8.38, 8.38, 8.38); Calibrated: 2022/6/20
- Sensor-Surface: 1.4mm (Mechanical Surface Detection)
- Electronics: DAE4 Sn690; Calibrated: 2022/6/15
- Phantom: SAM Twin Phantom; Type: SAM Twin; Serial: TP-1644
- Measurement SW: DASY52, Version 52.10 (4); SEMCAD X Version 14.6.14 (7501)

Area Scan (41x81x1): Interpolated grid: dx=1.500 mm, dy=1.500 mm

Maximum value of SAR (interpolated) = 7.50 W/kg

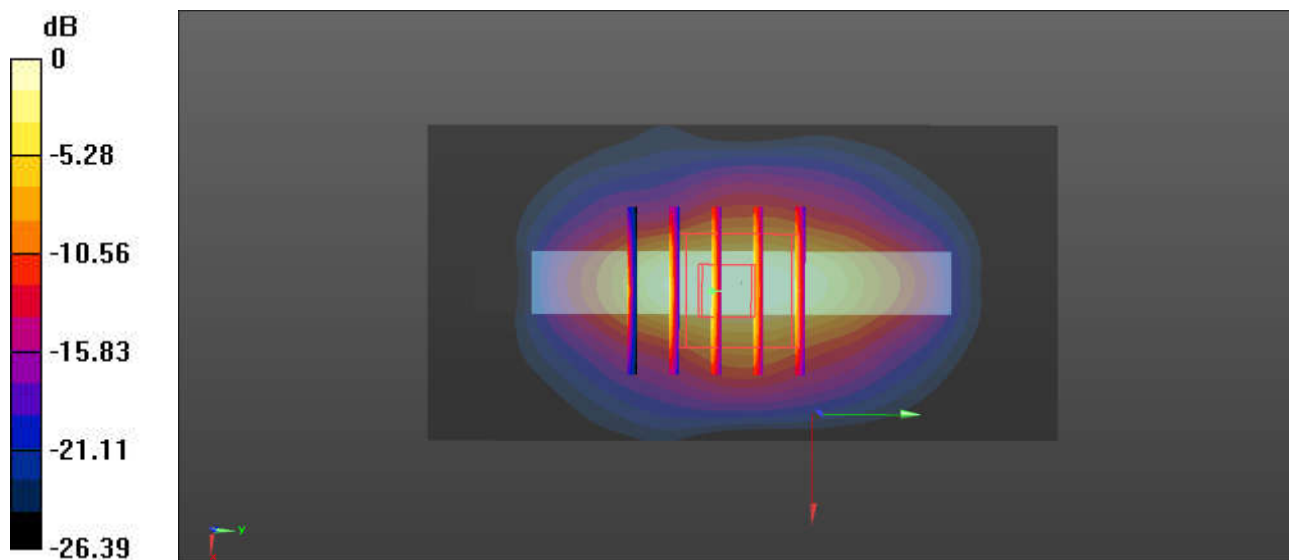
Zoom Scan (5x5x7)/Cube 0: Measurement grid: dx=8mm, dy=8mm, dz=5mm

Reference Value = 3.625 V/m; Power Drift = 0.01 dB

Peak SAR (extrapolated) = 9.81 W/kg

SAR(1 g) = 4.3 W/kg; SAR(10 g) = 1.9 W/kg

Maximum value of SAR (measured) = 8.06 W/kg



0 dB = 8.06 W/kg = 9.06 dBW/kg

73_FR1 n2_20M_QPSK_1RB_1Offset_Bottom Side_0mm_Ch372000

Communication System: UID 0, 5G NR (0); Frequency: 1860 MHz; Duty Cycle: 1:1
Medium: HSL_1900 Medium parameters used: $f = 1860$ MHz; $\sigma = 1.431$ S/m; $\epsilon_r = 39.709$; $\rho = 1000$ kg/m³

Ambient Temperature : 23.1 °C; Liquid Temperature : 22.6 °C

DASY5 Configuration:

- Probe: EX3DV4 - SN7627; ConvF(8.38, 8.38, 8.38); Calibrated: 2022/6/20
- Sensor-Surface: 1.4mm (Mechanical Surface Detection)
- Electronics: DAE4 Sn690; Calibrated: 2022/6/15
- Phantom: SAM Twin Phantom; Type: SAM Twin; Serial: TP-1644
- Measurement SW: DASY52, Version 52.10 (4); SEMCAD X Version 14.6.14 (7501)

Area Scan (41x81x1): Interpolated grid: dx=1.500 mm, dy=1.500 mm

Maximum value of SAR (interpolated) = 7.10 W/kg

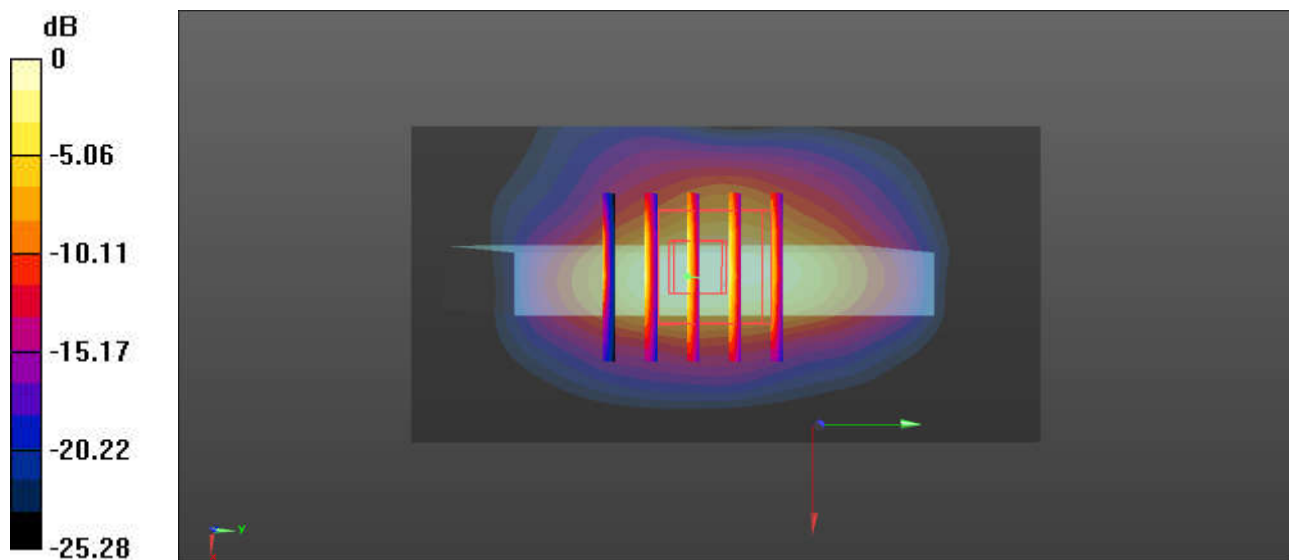
Zoom Scan (5x5x7)/Cube 0: Measurement grid: dx=8mm, dy=8mm, dz=5mm

Reference Value = 50.22 V/m; Power Drift = 0.02 dB

Peak SAR (extrapolated) = 9.94 W/kg

SAR(1 g) = 4.55 W/kg; SAR(10 g) = 2.04 W/kg

Maximum value of SAR (measured) = 7.70 W/kg



0 dB = 7.70 W/kg = 8.86 dBW/kg

74_LTE Band 7_20M_QPSK_1RB_0Offset_Top Side_0mm_Ch21100

Communication System: UID 0, LTE-FDD (0); Frequency: 2535 MHz; Duty Cycle: 1:1
Medium: HSL_2600 Medium parameters used: $f = 2535$ MHz; $\sigma = 1.865$ S/m; $\epsilon_r = 38.436$; $\rho = 1000$ kg/m³

Ambient Temperature : 23.1 °C; Liquid Temperature : 22.6 °C

DASY5 Configuration:

- Probe: EX3DV4 - SN7627; ConvF(7.7, 7.7, 7.7); Calibrated: 2022/6/20
- Sensor-Surface: 1.4mm (Mechanical Surface Detection)
- Electronics: DAE4 Sn690; Calibrated: 2022/6/15
- Phantom: SAM Twin Phantom; Type: SAM Twin; Serial: TP-1644
- Measurement SW: DASY52, Version 52.10 (4); SEMCAD X Version 14.6.14 (7501)

Area Scan (51x101x1): Interpolated grid: dx=1.200 mm, dy=1.200 mm

Maximum value of SAR (interpolated) = 11.5 W/kg

Zoom Scan (8x8x7)/Cube 0: Measurement grid: dx=5mm, dy=5mm, dz=5mm

Reference Value = 70.98 V/m; Power Drift = 0.06 dB

Peak SAR (extrapolated) = 9.5 W/kg

SAR(1 g) = 3.42 W/kg; SAR(10 g) = 1.34 W/kg

Maximum value of SAR (measured) = 7.14 W/kg

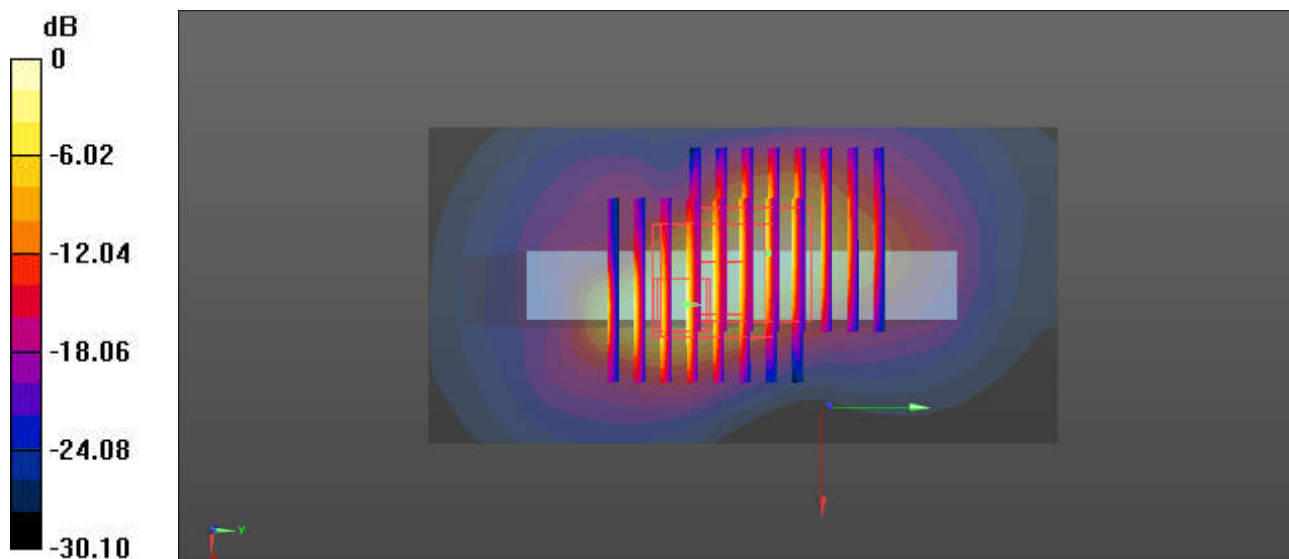
Zoom Scan (8x8x7)/Cube 1: Measurement grid: dx=5mm, dy=5mm, dz=5mm

Reference Value = 70.98 V/m; Power Drift = 0.06 dB

Peak SAR (extrapolated) = 9.02 W/kg

SAR(1 g) = 2.91 W/kg; SAR(10 g) = 1.27 W/kg

Maximum value of SAR (measured) = 6.9 W/kg



0 dB = 6.9 W/kg = 8.39 dBW/kg

77_FR1 n77_100M_QPSK_135RB_69Offset_Left Side_0mm_Ch656000

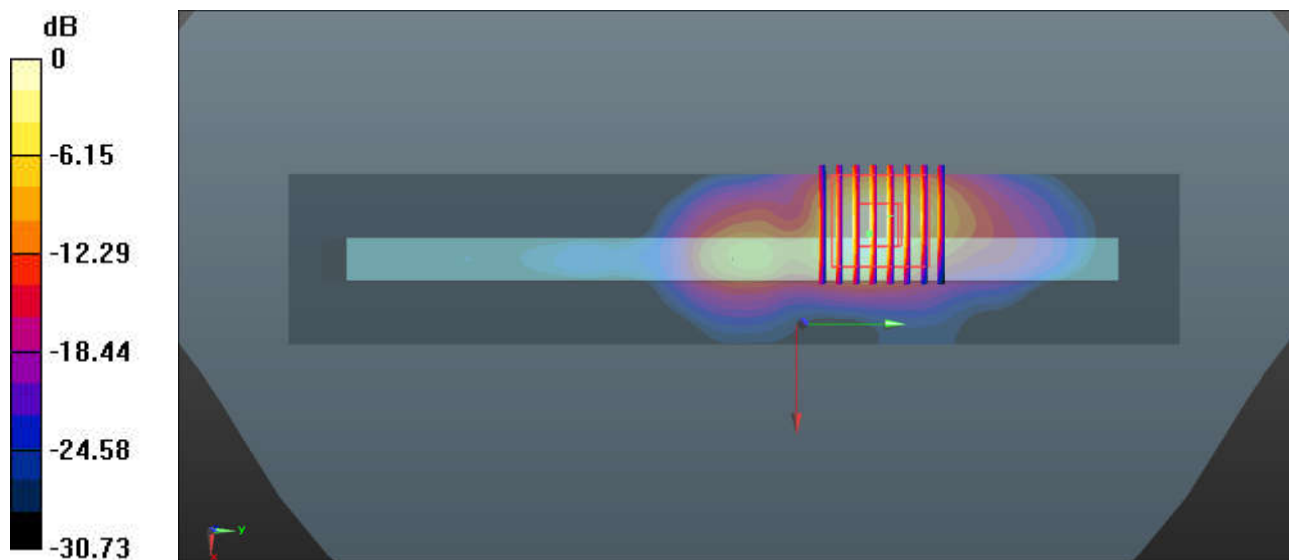
Communication System: UID 0, 5G NR (0); Frequency: 3840 MHz; Duty Cycle: 1:1
Medium: HSL_3900 Medium parameters used: $f = 3840$ MHz; $\sigma = 3.118$ S/m; $\epsilon_r = 38.443$; $\rho = 1000$ kg/m³
Ambient Temperature : 23.1 °C; Liquid Temperature : 22.8 °C

DASY5 Configuration:

- Probe: EX3DV4 - SN7706; ConvF(7.2, 7.2, 7.2); Calibrated: 2022/1/20
- Sensor-Surface: 1.4mm (Mechanical Surface Detection)
- Electronics: DAE4 Sn690; Calibrated: 2022/6/15
- Phantom: SAM Twin Phantom; Type: SAM Twin; Serial: TP-1644
- Measurement SW: DASY52, Version 52.10 (4); SEMCAD X Version 14.6.14 (7501)

Area Scan (41x211x1): Interpolated grid: dx=1.000 mm, dy=1.000 mm
Maximum value of SAR (interpolated) = 14.0 W/kg

Zoom Scan (8x8x7)/Cube 0: Measurement grid: dx=4mm, dy=4mm, dz=1.4mm
Reference Value = 24.03 V/m; Power Drift = 0.03 dB
Peak SAR (extrapolated) = 23.6 W/kg
SAR(1 g) = 7.26 W/kg; SAR(10 g) = 2.01 W/kg
Maximum value of SAR (measured) = 10.7 W/kg



0 dB = 10.7 W/kg = 10.29 dBW/kg

78_FR1 n78_100M_QPSK_135RB_69Offset_Left Side_0mm_Ch650000

Communication System: UID 0, 5G NR (0); Frequency: 3750 MHz; Duty Cycle: 1:1
Medium: HSL_3700 Medium parameters used: $f = 3750$ MHz; $\sigma = 3.03$ S/m; $\epsilon_r = 38.572$; $\rho = 1000$ kg/m³

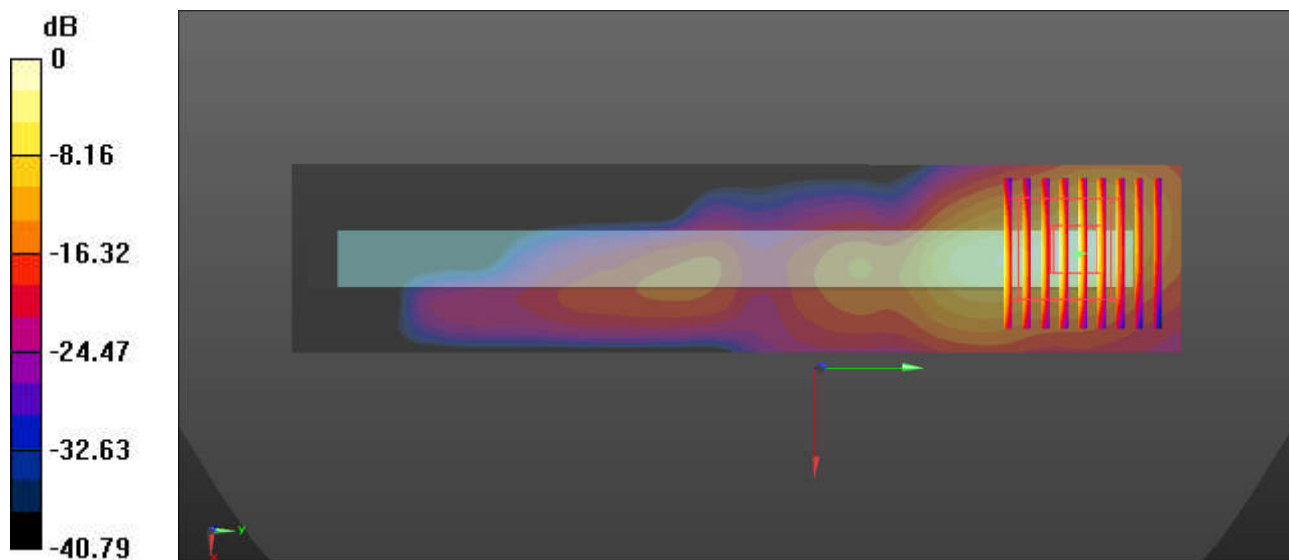
Ambient Temperature : 23.2 °C; Liquid Temperature : 22.7 °C

DASY5 Configuration:

- Probe: EX3DV4 - SN7627; ConvF(7, 7, 7); Calibrated: 2022/6/20
- Sensor-Surface: 1.4mm (Mechanical Surface Detection)
- Electronics: DAE4 Sn690; Calibrated: 2022/6/15
- Phantom: SAM Twin Phantom; Type: SAM Twin; Serial: TP-1644
- Measurement SW: DASY52, Version 52.10 (4); SEMCAD X Version 14.6.14 (7501)

Area Scan (41x191x1): Interpolated grid: dx=1.000 mm, dy=1.000 mm
Maximum value of SAR (interpolated) = 16.1 W/kg

Zoom Scan (9x9x7)/Cube 0: Measurement grid: dx=4mm, dy=4mm, dz=1.4mm
Reference Value = 10.57 V/m; Power Drift = -0.05 dB
Peak SAR (extrapolated) = 26.3 W/kg
SAR(1 g) = 7.24 W/kg; SAR(10 g) = 2.13 W/kg
Maximum value of SAR (measured) = 16.9 W/kg



0 dB = 16.9 W/kg = 12.28 dBW/kg

79_Band 255_3.75K_QPSK_1RB_1Offset_Left Side_0mm_Ch261674

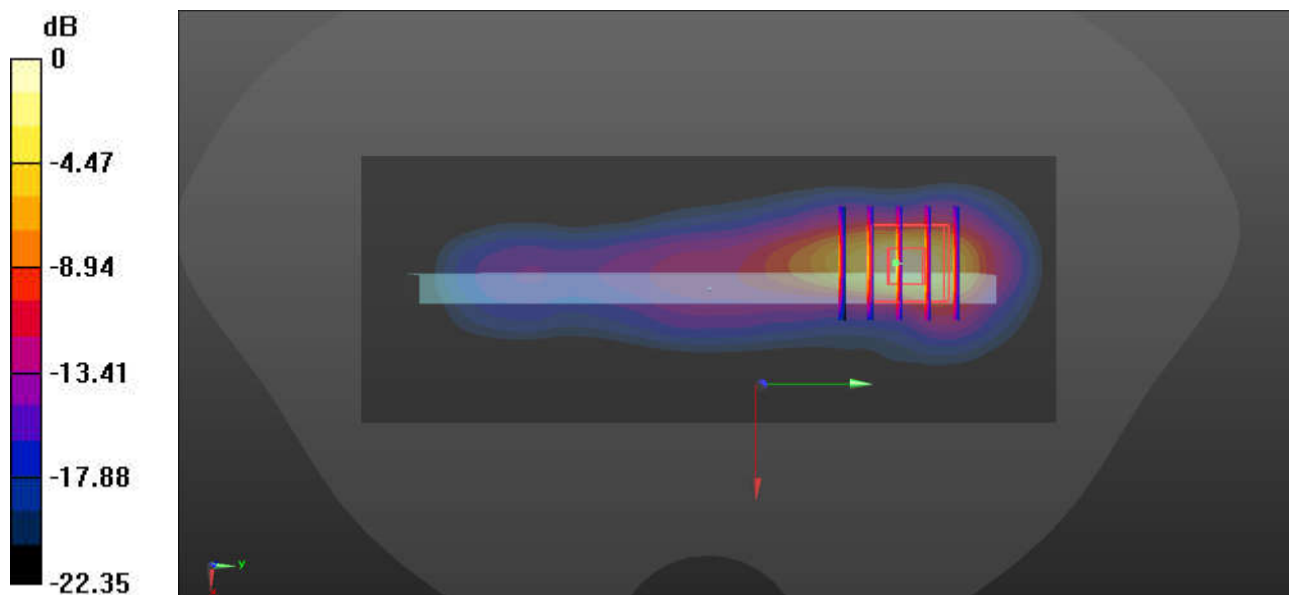
Communication System: UID 0, LTE (0); Frequency: 1643.3 MHz; Duty Cycle: 1:1
Medium: HSL_1650_221212 Medium parameters used: $f = 1643.3$ MHz; $\sigma = 1.256$ S/m; $\epsilon_r = 38.422$;
 $\rho = 1000$ kg/m³
Ambient Temperature : 23.2 °C; Liquid Temperature : 22.7 °C

DASY5 Configuration:

- Probe: EX3DV4 - SN7576; ConvF(9.05, 9.05, 9.05); Calibrated: 2022/7/28
- Sensor-Surface: 1.4mm (Mechanical Surface Detection)
- Electronics: DAE4 Sn1210; Calibrated: 2022/4/12
- Phantom: Twin-SAM1(P1aP2a20); Type: QD 000 P40 CD; Serial: TP:1670
- Measurement SW: DASY52, Version 52.10 (3); SEMCAD X Version 14.6.14 (7501)

Ch134450/Area Scan (51x131x1): Interpolated grid: dx=1.500 mm, dy=1.500 mm
Maximum value of SAR (interpolated) = 12.3 W/kg

Ch134450/Zoom Scan (5x5x7)/Cube 0: Measurement grid: dx=8mm, dy=8mm, dz=5mm
Reference Value = 26.08 V/m; Power Drift = 0.04 dB
Peak SAR (extrapolated) = 14.7 W/kg
SAR(1 g) = 6.01 W/kg; SAR(10 g) = 2.45 W/kg
Maximum value of SAR (measured) = 12.4 W/kg



0 dB = 12.4 W/kg = 10.93 dBW/kg

80_Band23_3.75K_QPSK_1RB_1Offset_Back_0mm_Ch25600

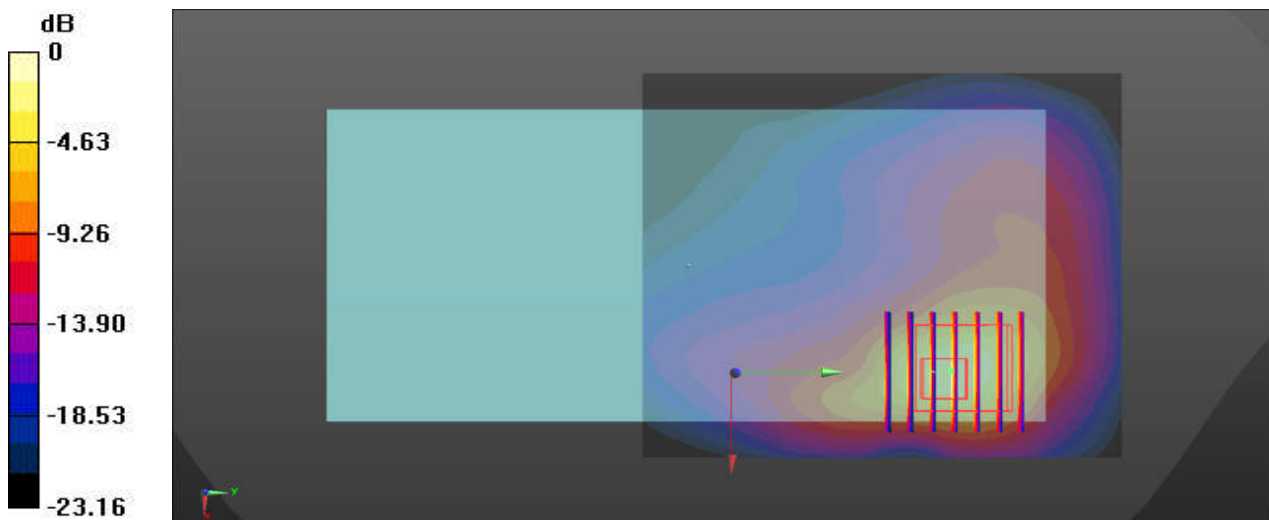
Communication System: UID 0, LTE (0); Frequency: 2010 MHz; Duty Cycle: 1:1.163
 Medium: HSL_2000_221212 Medium parameters used: $f = 2010$ MHz; $\sigma = 1.485$ S/m; $\epsilon_r = 38.816$; $\rho = 1000$ kg/m³
 Ambient Temperature : 23.5 °C; Liquid Temperature : 22.4 °C

DASY5 Configuration:

- Probe: EX3DV4 - SN7576; ConvF(8.39, 8.39, 8.39); Calibrated: 2022/7/28
- Sensor-Surface: 1.4mm (Mechanical Surface Detection)
- Electronics: DAE4 Sn1210; Calibrated: 2022/4/12
- Phantom: Twin-SAM1(P1aP2a20); Type: QD 000 P40 CD; Serial: TP:1670
- Measurement SW: DASY52, Version 52.10 (3); SEMCAD X Version 14.6.13 (7474)

Ch25600/Area Scan (81x91x1): Interpolated grid: dx=1.200 mm, dy=1.200 mm
 Maximum value of SAR (interpolated) = 8.75 W/kg

Ch25600/Zoom Scan (7x7x7)/Cube 0: Measurement grid: dx=5mm, dy=5mm, dz=5mm
 Reference Value = 12.67 V/m; Power Drift = -0.01 dB
 Peak SAR (extrapolated) = 21.93 W/kg
SAR(1 g) = 7.01 W/kg; SAR(10 g) = 2.65 W/kg
 Maximum value of SAR (measured) = 12.74 W/kg



0 dB = 12.74 W/kg

81_WLAN5GHz_802.11n-HT40 MCS0_Back_0mm_Ch54

Communication System: UID 0, WLAN5GHz (0); Frequency: 5270 MHz; Duty Cycle: 1:1.054
Medium: HSL_5000 Medium parameters used: $f = 5270$ MHz; $\sigma = 4.636$ S/m; $\epsilon_r = 36.211$; $\rho = 1000$ kg/m³

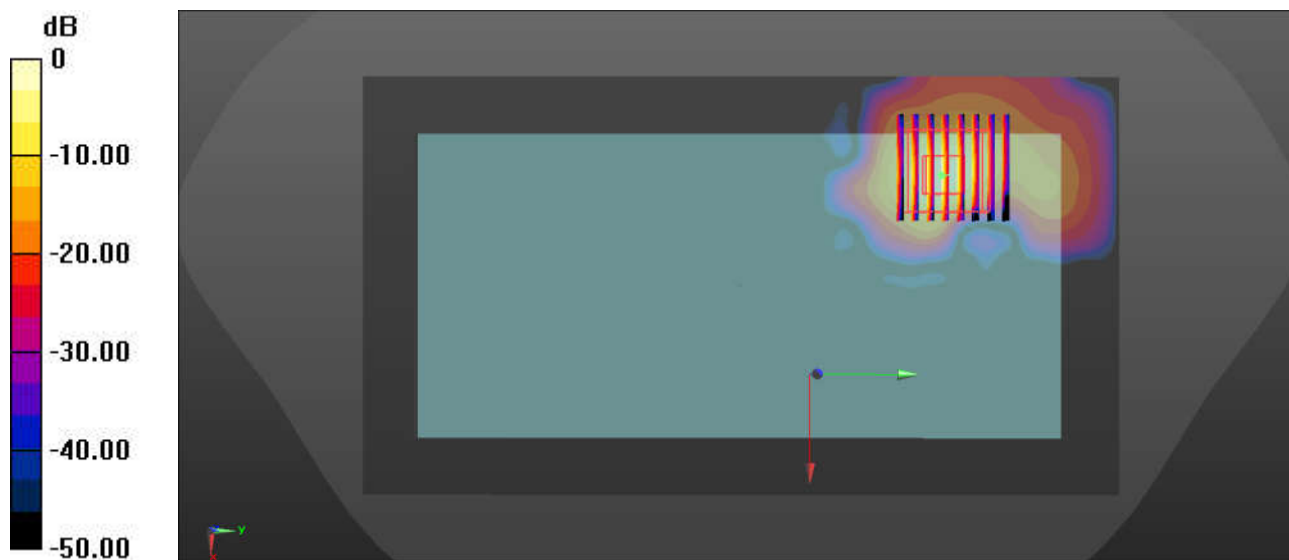
Ambient Temperature : 23.2 °C; Liquid Temperature : 22.7 °C

DASY5 Configuration:

- Probe: EX3DV4 - SN7627; ConvF(5.64, 5.64, 5.64); Calibrated: 2022/6/20
- Sensor-Surface: 1.4mm (Mechanical Surface Detection)
- Electronics: DAE4 Sn690; Calibrated: 2022/6/15
- Phantom: SAM Twin Phantom; Type: SAM Twin; Serial: TP-1644
- Measurement SW: DASY52, Version 52.10 (4); SEMCAD X Version 14.6.14 (7501)

Area Scan (111x201x1): Interpolated grid: dx=1.000 mm, dy=1.000 mm
Maximum value of SAR (interpolated) = 11.8 W/kg

Zoom Scan (8x8x7)/Cube 0: Measurement grid: dx=4mm, dy=4mm, dz=1.4mm
Reference Value = 0 V/m; Power Drift = 0.01 dB
Peak SAR (extrapolated) = 22.8 W/kg
SAR(1 g) = 4.52 W/kg; SAR(10 g) = 0.959 W/kg
Maximum value of SAR (measured) = 13.6 W/kg



0 dB = 13.6 W/kg = 11.34 dBW/kg

82_WLAN5GHz_802.11ac-VHT80 MCS0_Back_0mm_Ch122

Communication System: UID 0, WLAN5GHz (0); Frequency: 5610 MHz; Duty Cycle: 1:1.107
Medium: HSL_5000 Medium parameters used: $f = 5610$ MHz; $\sigma = 4.971$ S/m; $\epsilon_r = 35.709$; $\rho = 1000$ kg/m³

Ambient Temperature : 23.1 °C; Liquid Temperature : 22.6 °C

DASY5 Configuration:

- Probe: EX3DV4 - SN7627; ConvF(4.95, 4.95, 4.95); Calibrated: 2022/6/20
- Sensor-Surface: 1.4mm (Mechanical Surface Detection)
- Electronics: DAE4 Sn690; Calibrated: 2022/6/15
- Phantom: SAM Twin Phantom; Type: SAM Twin; Serial: TP-1644
- Measurement SW: DASY52, Version 52.10 (4); SEMCAD X Version 14.6.14 (7501)

Area Scan (111x201x1): Interpolated grid: dx=1.000 mm, dy=1.000 mm

Maximum value of SAR (interpolated) = 9.58 W/kg

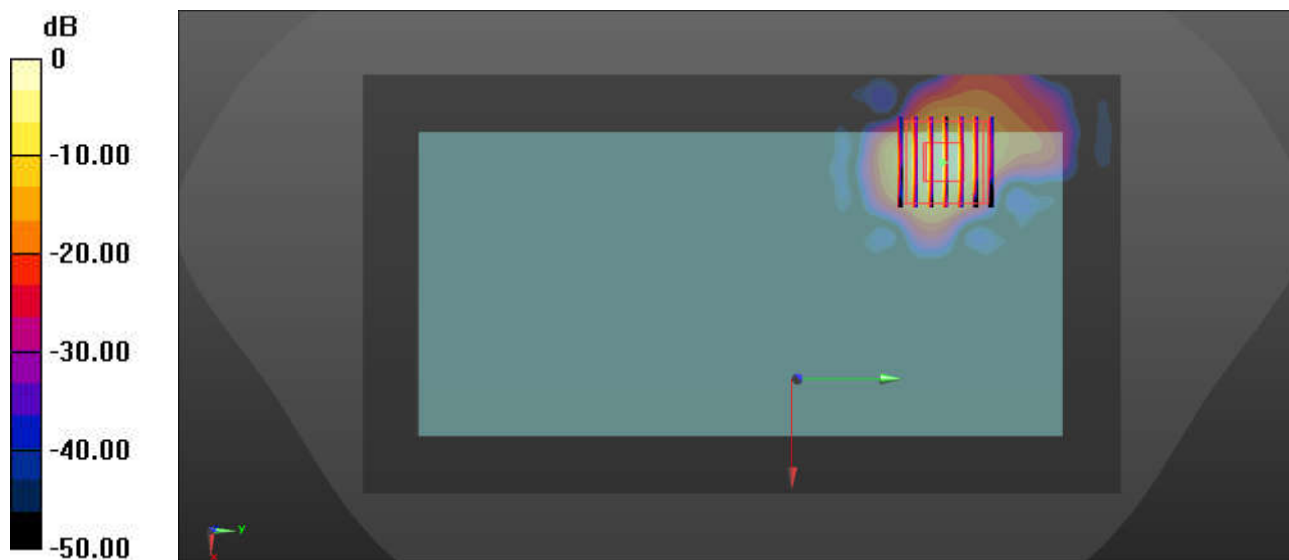
Zoom Scan (7x7x7)/Cube 0: Measurement grid: dx=4mm, dy=4mm, dz=1.4mm

Reference Value = 0 V/m; Power Drift = 0.01 dB

Peak SAR (extrapolated) = 17.0 W/kg

SAR(1 g) = 3.22 W/kg; SAR(10 g) = 0.654 W/kg

Maximum value of SAR (measured) = 9.84 W/kg



0 dB = 9.84 W/kg = 9.93 dBW/kg

83_WLAN5GHz_802.11ac-VHT80 MCS0_Back_0mm_Ch155

Communication System: UID 0, WLAN5GHz (0); Frequency: 5775 MHz; Duty Cycle: 1:1.107
Medium: HSL_5000 Medium parameters used: $f = 5775$ MHz; $\sigma = 5.209$ S/m; $\epsilon_r = 35.681$; $\rho = 1000$ kg/m³

Ambient Temperature : 23.3 °C; Liquid Temperature : 22.8 °C

DASY5 Configuration:

- Probe: EX3DV4 - SN7627; ConvF(4.9, 4.9, 4.9); Calibrated: 2022/6/20
- Sensor-Surface: 1.4mm (Mechanical Surface Detection)
- Electronics: DAE4 Sn690; Calibrated: 2022/6/15
- Phantom: SAM Twin Phantom; Type: SAM Twin; Serial: TP-1644
- Measurement SW: DASY52, Version 52.10 (4); SEMCAD X Version 14.6.14 (7501)

Area Scan (111x201x1): Interpolated grid: dx=1.000 mm, dy=1.000 mm

Maximum value of SAR (interpolated) = 11.4 W/kg

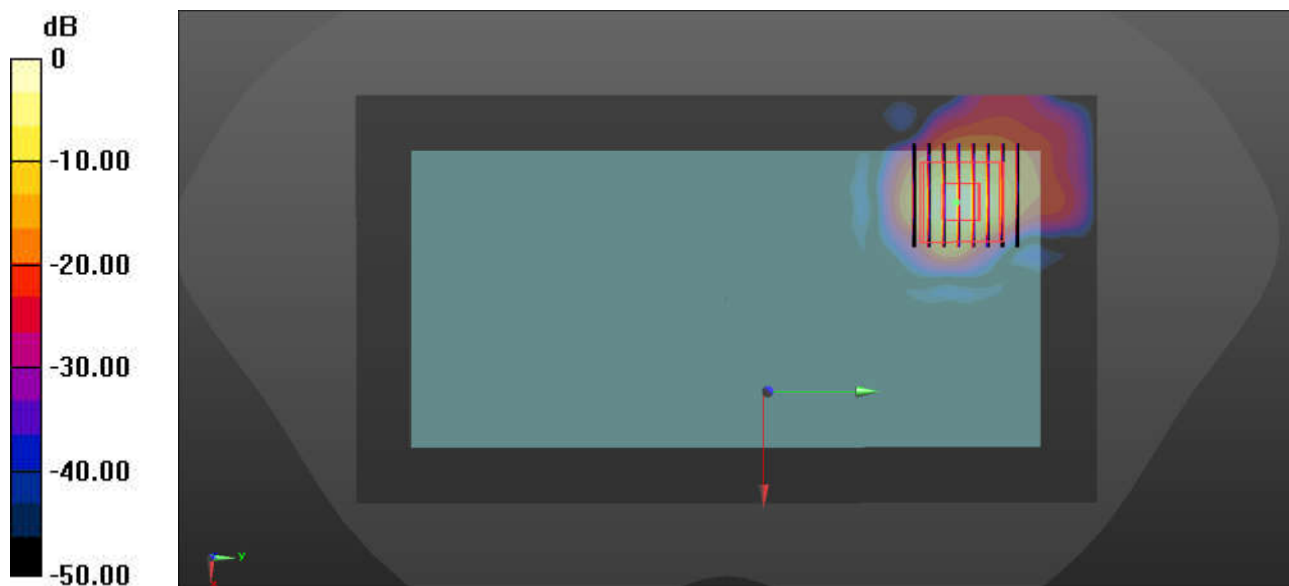
Zoom Scan (8x8x7)/Cube 0: Measurement grid: dx=4mm, dy=4mm, dz=1.4mm

Reference Value = 0 V/m; Power Drift = 0.03 dB

Peak SAR (extrapolated) = 20.1 W/kg

SAR(1 g) = 3.69 W/kg; SAR(10 g) = 0.717 W/kg

Maximum value of SAR (measured) = 11.3 W/kg



0 dB = 11.3 W/kg = 10.53 dBW/kg