



Quick Start Guide

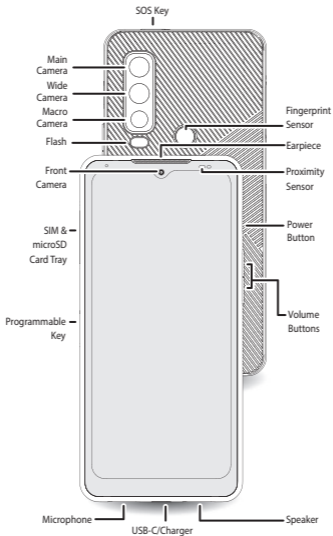
motorola defy 2

English.....	3
--------------	---

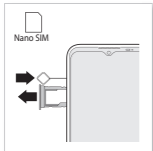
WARNING: Messaging, tracking and SOS functions require an active Bullitt messenger satellite subscription. Always test your device before starting you next trip.

Let's get started

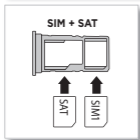
Before using your phone, please read the legal, safety, and regulatory information provided with your product.



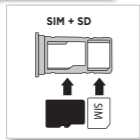
Put in the cards & power on



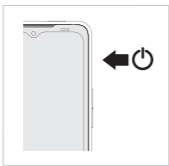
- 1 Use your fingernail to open the SIM door and slide out the SIM tray. Make sure you use the correct size SIM card and don't cut the SIM card.



- 2 The satellite SIM is pre-installed in the SIM tray in the phone. Insert the cellular SIM card with the gold contacts down, then gently push the tray into the slot.



- 3 To use two cellular SIMs or a microSD card, for additional storage*, remove the satellite SIM card.



- 4 Press and hold the Power button, then follow the prompts to get started.

Help & more

Get answers, updates, and info:

- **Help is here:** From the Home screen, swipe up and tap **Settings > Help** to learn how to use your phone and get support.
- **Get more:** Get software, user guides, and more at www.motorola.com/mydefy
- **Get apps:** Tap **Play Store** to browse and download apps.

Legal information. This guide provides important legal, safety, and regulatory information that you should read before using your product. For the complete legal information, from the Home screen swipe up and tap **Settings > Q**, then type **Legal information**, or visit www.motorola.com/device-legal.

Battery safety. To prevent possible burning and injury, the battery in your phone should only be removed by a Motorola-approved service center or similar skilled personnel.

If your phone becomes unresponsive, press and hold the Power button until the screen goes dark and your phone restarts. Charge your phone using a compatible Motorola charger. Use of other chargers is not recommended. Don't charge your phone in temperatures below -25°C or above 55°C. For more, see the "Legal information" section of this guide, or visit www.motorola.com/device-legal.

Warning about high volume usage. To prevent possible hearing damage, do not listen at high volume levels for long periods.

Disposal & recycling. For help recycling products and packaging responsibly, visit www.motorola.com/recycling.

Extreme heat or cold. Don't use your phone in temperatures below -25°C or above 55°C. Don't store/transport your phone in temperatures below -20°C or above 60°C.

SAR information (on e-label). To view specific absorption rate (SAR) values for this phone, from the Home screen swipe up and tap **Settings > Q**, then type **Regulatory**, or visit www.motorola.com/sar.

Legal disclaimers. Features, services and applications are network dependent and may not be available in all areas; additional terms/charges may apply. Features, functionality, and other product specifications, as well as the information contained in this guide, are based upon the latest available information and believed to be accurate at the time of printing. Motorola reserves the right to correct or change any information without notice.

Arbitration. Your purchase is governed by a binding arbitration clause. For more information and how to opt-out, see the legal guide that came with your phone.

Specific Absorption Rate (SAR)(ICNIRP) YOUR PHONE MEETS INTERNATIONAL GUIDELINES

English



FOR EXPOSURE TO RADIO WAVES.

The highest SAR values under the ICNIRP guidelines to your phone model are:


Head SAR	0.997 W/kg
Body-worn SAR	1.479 W/kg
Limb SAR	3.265 W/kg.

Supported frequencies and power. This phone is capable of operation on the following frequencies, subject to location and network availability.

Model: BM251E

Operating mode	Maximum Transmit Power (Conducted) dBm
GSM900	33.5
GSM1800	30.5
3G BAND I	24.00
3G BAND V	24.00
3G BAND VIII	24.00
4G BAND 1	24.00
4G BAND 3	24.00
4G BAND 5	24.00
4G BAND 7	24.00
4G BAND 8	24.00
4G BAND 20	24.00
4G BAND 28	24.00
4G BAND 38	24.00
4G BAND 40	24.00
4G BAND 41	24.00
BAND 255	24.00
BAND 256	24.00
FRI n1	24.00
FRI n3	24.00
FRI n5	24.00
FRI n7	24.00

FR1 n8	24.00
FR1 n20	24.00
FR1 n28	24.00
FR1 n38	24.00
FR1 n40	24.00
FR1 n41	24.00
FR1 n77-PC3	24.50
FR1 n78-PC3	24.50
FR1 n78-PC2	27.00
Operating mode	Maximum Transmit Power (EIRP) dBm
Bluetooth	9.9
WLAN 2.4GHz	18.10
WLAN 5GHz Band 1	15.60
WLAN 5GHz Band 2	15.56
WLAN 5GHz Band 3	13.84
WLAN 5GHz Band 4	12.87
Operating mode	Strength Field
WPC	-9.9 dBuA/m at 10m
NFC	-21.18 dBuA/m at 10m

Regulatory information (e-label). To view regulatory information for this phone, from the home screen swipe up and tap **Settings** > , then type **Regulatory labels**, or visit www.motorola.com/device-legal.

European conformance (CE). The following information is applicable to phones that carry a CE mark. Contact point: **AUTHORISED REPRESENTATIVE:** Authorised Representative Service, 77 Camden Street Lower, Dublin. D02 XE80. Ireland

Hereby, Bullitt Mobile Limited declares that the radio equipment with this declaration and bearing the CE mark is in compliance with Directive 2014/53/EU.



The full DoC can be found at www.motorola.com/red

Restrictions of use. This device is restricted to indoor use only when operating in the 5250 to 5350 MHz frequency range. Restrictions or Requirements in: (BE), (BG), (CZ),

(DK), (DE), (EE), (IE), (EL), (ES), (FR),(HR), (IT), (CY), (LV), (LT), (LU), (HU), (MT), (NL), (AT), (PL), (PT), (RO), (SI), (SK), (FI), (SE), (UK(NI)), (CH), (NO), (IS), (LI), (TR).

Hereby, Bullitt Mobile Limited declares that the radio equipment with this declaration and bearing the UKCA Mark is in compliance with UK Radio Equipment Regulations 2017. The full text of the UK declaration of conformity is available at the following internet address:



www.motorola.com/red.

In accordance with the relevant statutory requirements in UK, the 5250 to 5350 MHz frequency range is restricted to indoor use only in the United Kingdom.

SAR information. This device has been tested and meets both FCC(US) and CE(EU) limits for Radio Frequency (RF) exposure. Carry this device at least 10 mm (in US) /5 mm (in EU) away from your body to ensure exposure levels remain at or below as FCC(US) / CE(EU) tested levels.

Copyright & trademarks. MOTOROLA, the Stylized Motorola Logo and the Stylized M Logo are trademarks or registered trademarks of Motorola Trademark Holdings, LLC, and are used under license. All other trademarks are the property of their respective owners.

© 2023 Motorola Mobility LLC. All rights reserved.

Product ID: **Motorola Defy 2** (BM2SIE)



motorola.com



Printed in China