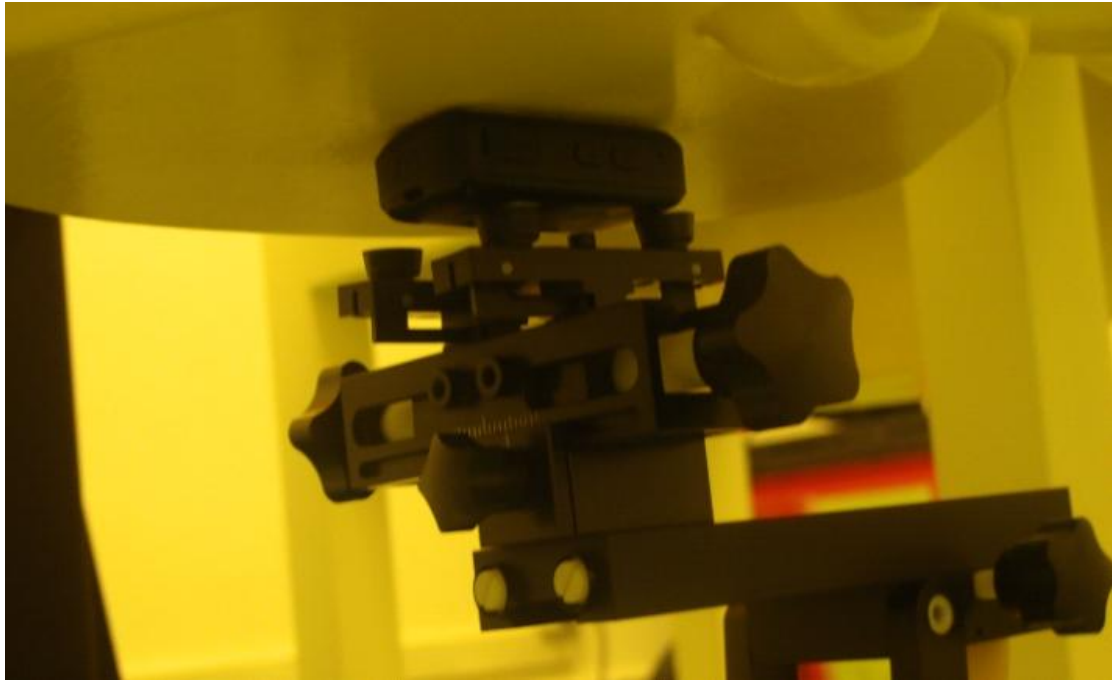
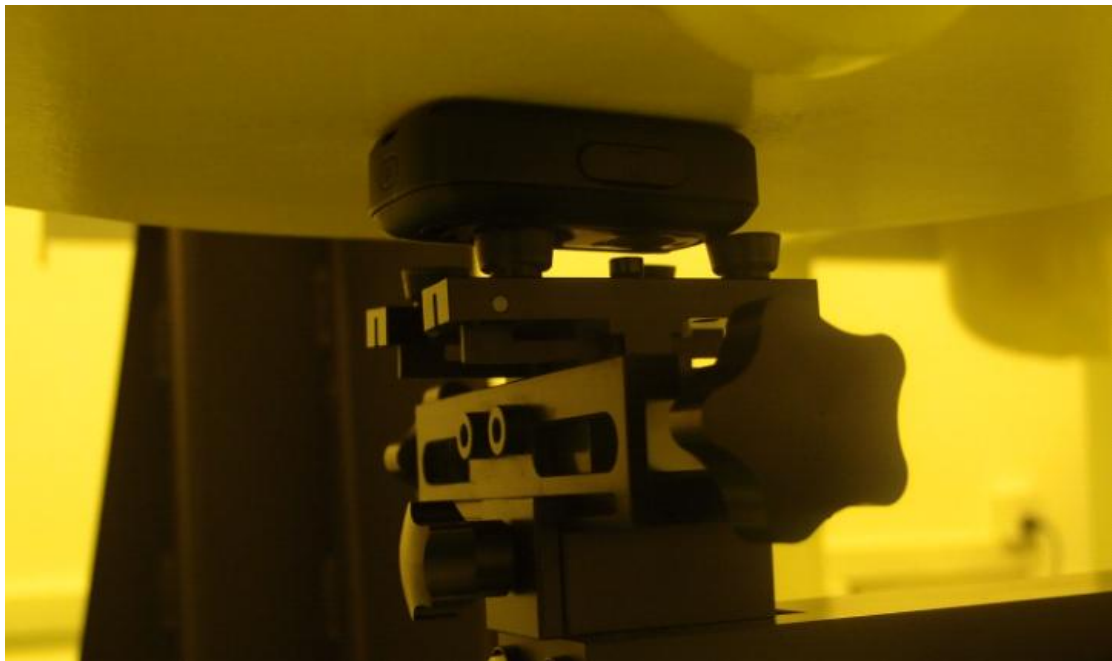


Test positions for body:

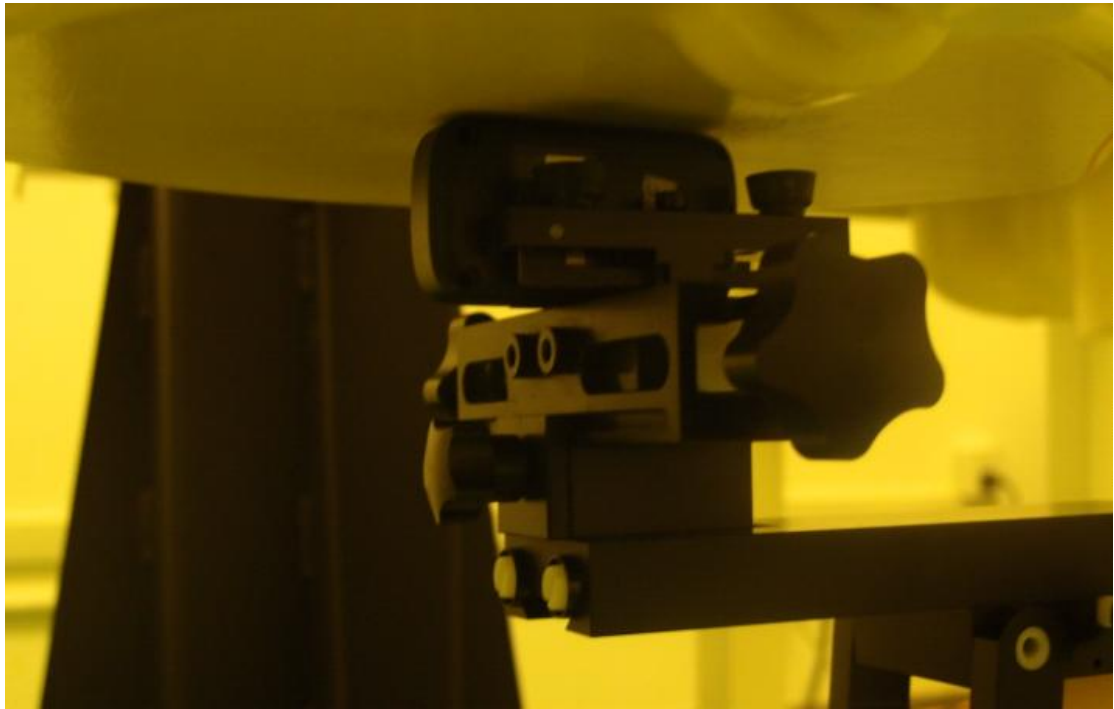
The Body SAR is tested at the following 6 test positions all with the distance =0mm between the EUT and the phantom bottom :



Picture 1-1: Toward Phantom (0mm)



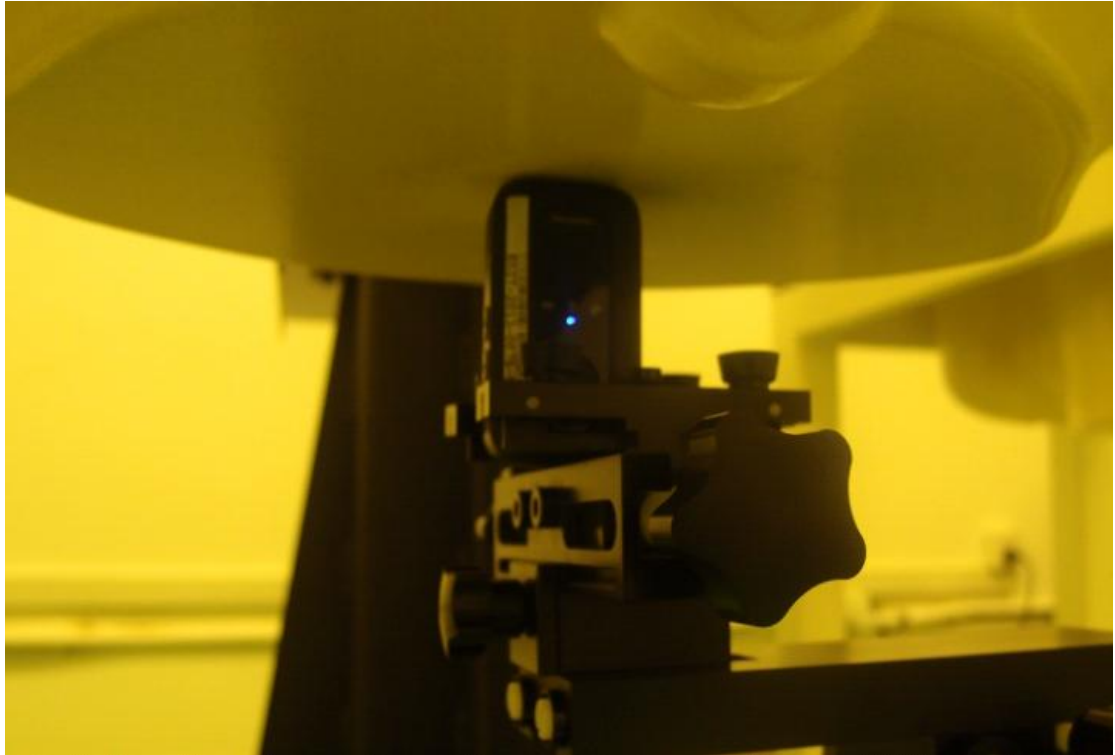
Picture 1-2: Toward Ground (0mm)



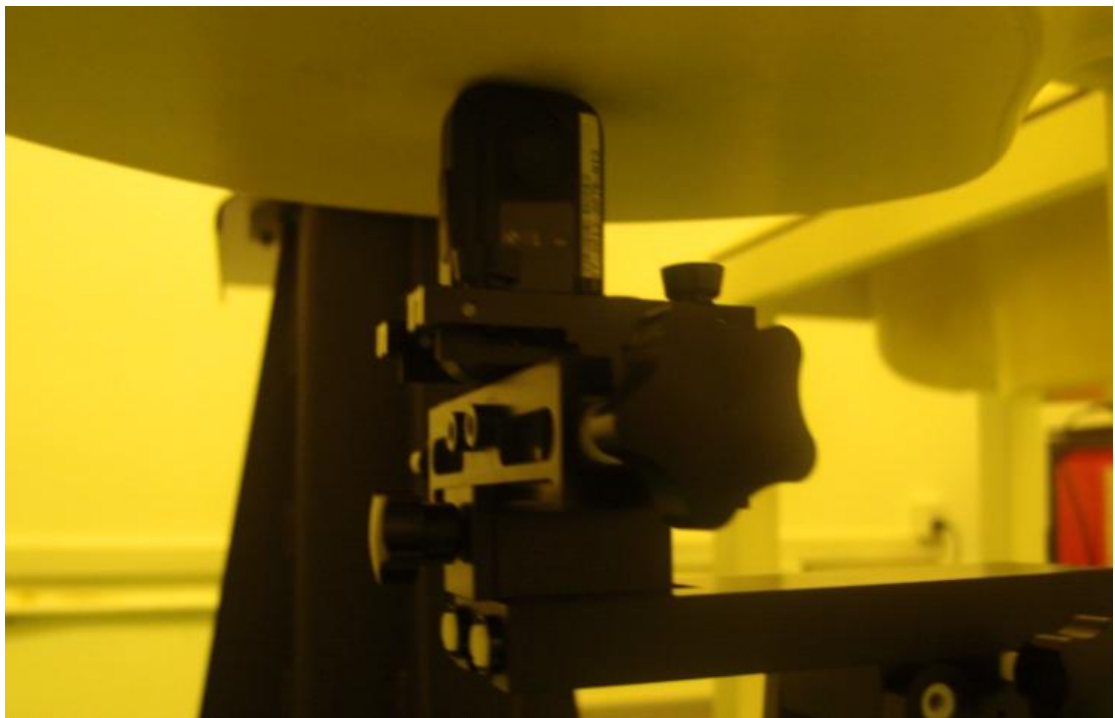
Picture 1-3: Toward Left (0mm)



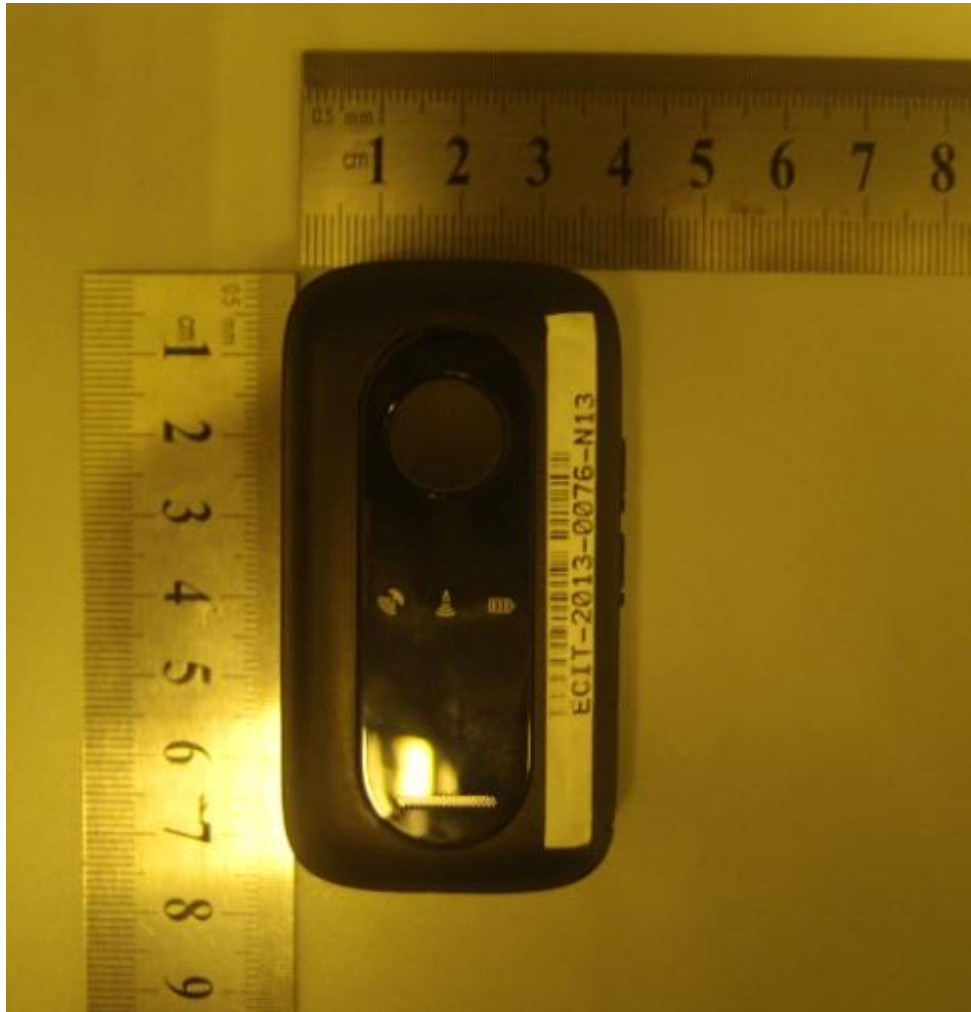
Picture 1-4: Toward Right (0mm)



Picture 1-5: Toward Top (0mm)



Picture 1-6: Toward Bottom (0mm)



Picture 1-7: Constituents of the sample