



## 9 FCC Authentication

This device complies with Part 15 of the FCC Rules. Operation is subject to the following two conditions: (1) this device may not cause harmful interference, and (2) this device must accept any interference received, including interference that may cause undesired operation.

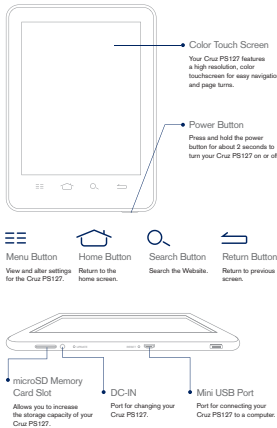
Changes or modifications not expressly approved by the party responsible for compliance could void the user's authority to operate the equipment.

**NOTE:** This equipment has been tested and found to comply with the limits for a Class B digital device, pursuant to Part 15 of the FCC Rules. These limits are designed to provide reasonable protection against harmful interference in a residential installation. This equipment generates, uses and can radiate radio frequency energy and, if not installed and used in accordance with the instructions, may cause harmful interference to radio communications. However, there is no guarantee that interference will not occur in a particular installation. If this equipment does cause harmful interference to radio or television reception, which can be determined by turning the equipment off and on, the user is encouraged to try to correct the interference by one or more of the following measures:

- Reorient or relocate the receiving antenna.
- Increase the separation between the equipment and receiver.
- Connect the equipment into an outlet on a circuit different from that to which the receiver is connected.
- Consult the dealer or an experienced radio/TV technician for help.

**FCC RF warning statement:**  
The device has been evaluated to meet general RF exposure requirement. The device can be used in portable exposure condition without restriction.

## 2 Overview of Your Cruz PS127



## 7 Using Wi-Fi

To connect your Cruz PS127 to your home Wi-Fi or a free unsecured Wi-Fi hotspot:

From the Home Screen, select the Wi-Fi Settings shortcut icon, and ensure that both Wi-Fi and Network Notification are enabled with green check marks.

After a moment, your Wi-Fi networks list should populate.

Tap the network you wish to connect to and then click Connect. The Wi-Fi icon should now appear next to the date and time.

To connect using a password:

If a password is required, tap the password text field in order to access the pop-up keyboard, then enter your password.

Once the Cruz PS127 has successfully connected to a specific network, identified by a unique Service Set or the most recently successful connection. If that SSID is not found, it is included in the Wi-Fi networks list as "Not in range, remembered" in the status line.

Turn Wi-Fi off to save power

When you are not using Wi-Fi, turn it off via the Settings Menu, to save battery power.

## 4 Set up: turning on your Cruz PS127 for 1st. time

- 1. Watch a Quick Video**  
The first time you turn on your Cruz PS127, there is a brief video to help you with the set-up and registration process of your Cruz PS127.
- 2. Read and Accept the Terms of Service**  
When the video has finished, your Cruz PS127 displays its Terms of Service. Read the terms. To accept them, tap Accept
- 3. Select your Time Zone**  
Tap on your time zone (for example, Eastern Standard Time). Then tap Next.
- 4. Connect to a Wi-Fi® network**  
To register your Cruz PS127 and to purchase and download books and periodicals, you need to be connected to a Wi-Fi network.

## 1 About your Cruz PS127

Cruz PS127 is a multi-task, touch screen device providing unlimited possibilities.

Cruz through ebooks, videos, games, and the Web. With its user friendly Android™ interface, your Cruz PS127 contains all the functions you need for home or on the move. Explore this quick user guide to learn more.

**Benefits of using Cruz PS127**

The Cruz PS127 is a portable, high performance touch screen device running the Android™ 2.1 interface. Lightweight and slim, the Cruz PS127 is the perfect tool to streamline your operations for business, family and entertainment.

The Cruz PS127 has full Web browser support and provides a richer experience than traditional E-book readers. You can enjoy online shopping, movies, social media and E-books. The built-in E-book library portal application allows you to access over 700,000 in store publications. Plus, you will find an open portal for downloading apps, magazines, and videos from a broad array of content providers. You can store photos, videos and other data on SD cards, and with up to 10 hours battery life, you can enjoy continuous browsing.

The powerful CPU and large RAM capacity support the multi media touch screen performance of the Cruz PS127, enabling you to enjoy superfast data speeds on Wi-Fi connections.

**Features and Applications**

- Facebook
- CruzMarket
- Power Saving
- Browser
- Music Player
- OfficeSuite® Viewer
- ASTRO® File Manager
- Email
- Alarm Clock
- Photo Gallery

## 10 Apps on Your Cruz PS127

Your Cruz PS127 comes with a suite of pre-installed apps, including:

Astro – your file management application.

eBooks – eBook reader application gives you easy access to an enormous world of literature in electronic form. From classics to contemporary writing, find it all online to enjoy at your leisure.

CruzMarket – Find applications specially selected for the Cruz PS127. Many of them are free.

eBuddy – Instant messenger application.

Facebook Mobile – Log into your Facebook account.

Gallery – Access photo or video files for play or display.

Office Suite – Allows you to view Microsoft® Office files.

**Learn More**

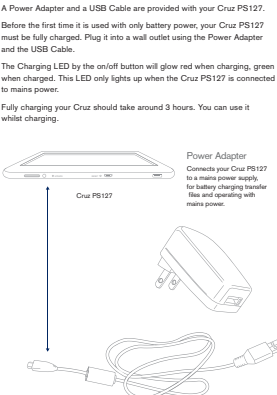
Please read the User Guide for comprehensive information on the Cruz PS127. You'll find a copy in the library of the Cruz PS127, and you can download a copy to your PC from [www.cruzreader.com](http://www.cruzreader.com).

**Support**

At [www.cruzreader.com](http://www.cruzreader.com), you can browse and search an extensive Knowledge Base, and submit support requests.

Alternatively, you can obtain support via email to [www.vmeonline.com](mailto:www.vmeonline.com), or telephone 1-800-296-4312.

## 3 Accessories supplied with your Cruz PS127



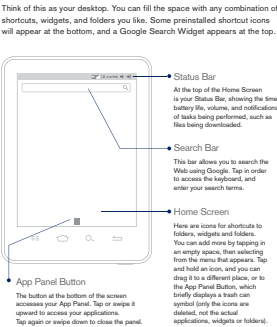
## 8 Email set up

Double-click the Email icon. Type in your email address and password, and follow the email setup instructions.

**Sending Email**

- Tap the Email icon.
- Type a name or email address in the To field.
- Tap Co/Bo/From if you want to copy the message to others, or change the account you send the message from. If you have more than one email account, you can tap the From field to change the account you're sending to.
- Enter a subject, then your message.
- Tap Send.

## 5 Your Home Screen



## 6 The Touch Screen

