

User Manual

2.0.2 CHANNEL DOLBY ATMOS SOUND BAR



SAFETY & WARNINGS

Thank you for purchasing our sound bar. Before using this product, please read and understand the following safety and warning information to ensure safe and proper usage.

Safety Precautions:

1. **Electrical Safety:** This sound bar should be plugged into a properly grounded electrical outlet to prevent electrical hazards such as electric shock or fire. Do not use extension cords or damaged electrical cords with the sound bar.
2. **Placement:** Place the sound bar on a stable surface and ensure that it is positioned securely to prevent it from falling or tipping over, which could cause injury or damage.
3. **Ventilation:** Do not block the ventilation openings of the sound bar. Ensure that there is adequate ventilation around the sound bar to prevent overheating and ensure safe operation.
4. **Liquid and Moisture:** Do not expose the sound bar to liquid or moisture, as it may result in electrical shock or damage to the product. Keep liquids away from the sound bar at all times.
5. **Cleaning:** When cleaning the sound bar, always disconnect it from the power source and use a soft, dry cloth. Do not use liquid or abrasive cleaners that may damage the surface of the sound bar.
6. **Cables:** Use only the cables provided with the sound bar or cables that are compatible with the product. Improper cables may result in poor performance or damage to the sound bar.
7. **Children:** Keep the sound bar and its accessories out of reach of children, especially small parts that could pose a choking hazard. Do not allow children to play with the sound bar or its components.
8. **Overheating:** If the sound bar becomes excessively hot during use, immediately disconnect it from the power source and allow it to cool down before handling or further operation.

Warnings:

1. **Hearing Safety:** Listening to sound at high volumes for extended periods of time may damage your hearing. Use the sound bar at a comfortable volume level and take breaks if listening for prolonged periods.
2. **Electrical Hazards:** Do not attempt to open or disassemble the sound bar as it may expose you to dangerous electrical components. Repairs should only be performed by qualified technicians.
3. **Compatibility:** Ensure that the sound bar is compatible with your audio source, and follow the manufacturer's instructions for setup and configuration. Using the sound bar with incompatible devices may result in damage to the product or poor audio performance.
4. **Power Source:** Only use the provided power cord or a cord that meets the manufacturer's specifications. Using an improper power cord may result in electrical hazards or damage to the sound bar.

5. Use in Approved Locations: Only use the sound bar in indoor environments and in accordance with local regulations and guidelines. Do not use the sound bar in damp or wet locations or expose it to extreme temperatures or humidity.

6. Battery Safety: If the sound bar is powered by a battery, follow the manufacturer's instructions for safe battery usage, charging, and disposal. Do not attempt to replace the battery with a non-approved battery.

Note: This safety and warning information is not an exhaustive list, and it is important to use common sense and exercise caution when using any electronic product. Always refer to the sound bar's user manual and follow the manufacturer's instructions for safe.

FCC Warning

This device complies with part 15 of the FCC Rules. Operation is subject to the following two conditions: (1) This device may not cause harmful interference, and (2) this device must accept any interference received, including interference that may cause undesired operation.

Any changes or modifications not expressly approved by the party responsible for compliance could void the user's authority to operate the equipment.

NOTE: This equipment has been tested and found to comply with the limits for a Class B digital device, pursuant to Part 15 of the FCC Rules. These limits are designed to provide reasonable protection against harmful interference in a residential installation. This equipment generates, uses and can radiate radio frequency energy and, if not installed and used in accordance with the instructions, may cause harmful interference to radio communications. However, there is no guarantee that interference will not occur in a particular installation.

If this equipment does cause harmful interference to radio or television reception, which can be determined by turning the equipment off and on, the user is encouraged to try to correct the interference by one or more of the following measures:

-- Reorient or relocate the receiving antenna.

-- Increase the separation between the equipment and receiver.

-- Connect the equipment into an outlet on a circuit different from that to which the receiver is connected.

-- Consult the dealer or an experienced radio/TV technician for help.

This equipment complies with FCC radiation exposure limits set forth for an uncontrolled environment. This equipment should be installed and operated with minimum distance 20cm between the radiator and your body.

User Manual

2.0.2 CHANNEL DOLBY ATMOS SOUND BAR



Package Contents

Adaptor x 1pc (20V,2.5A)

User Manual x 1 pc

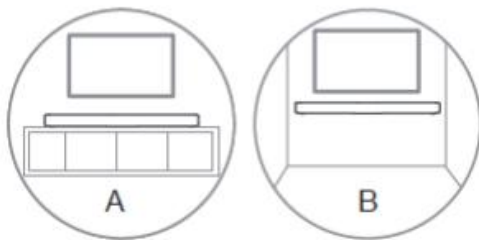
Remote control x 1pc (AAA battery include)

Vendor standard HDMI cable x 1pc (1m)

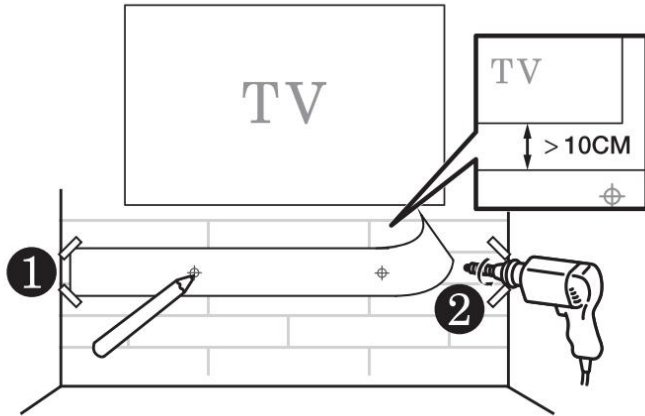
Wall mount brackets

Wall mounting the Soundbar

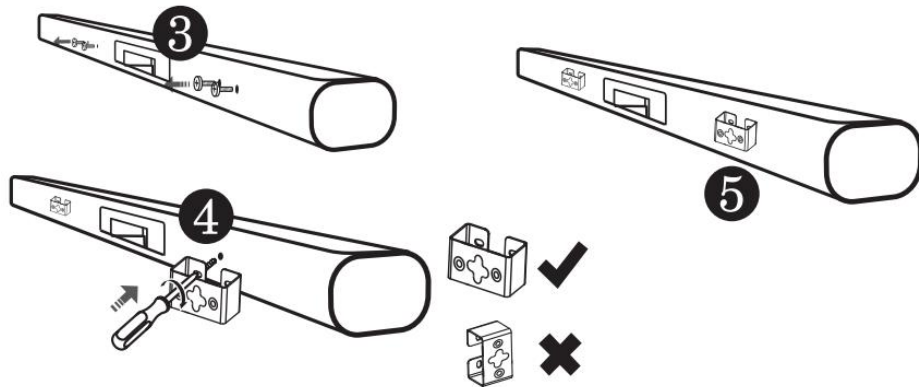
You can choose to place your Sound Bar main unit below the center of your TV or mount it on the wall.



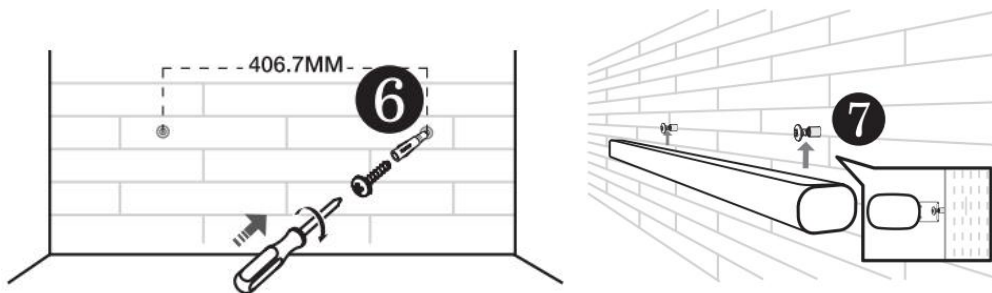
1. Make sure the wall mount is at least 10cm below the center of the TV.
2. Use a level to make sure the Sound Bar is positioned accurately.
3. Mark on the wall using each marking on the ruler through the mounting holes.
4. Drill a screw hole at each marking on the wall.



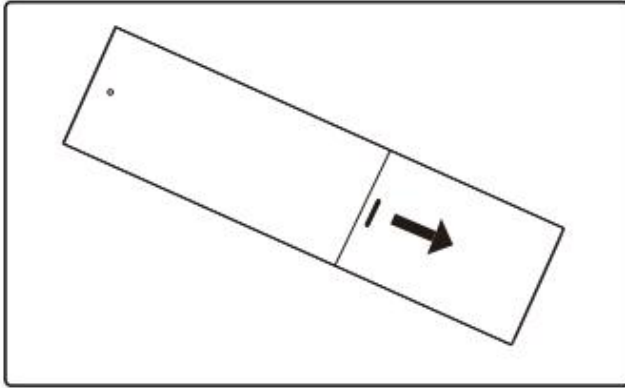
5. Take out the screws from the rear of the soundbar, 2 per side.
6. Using a screw driver, attach the mounting brackets to the soundbar.
7. Installation complete.



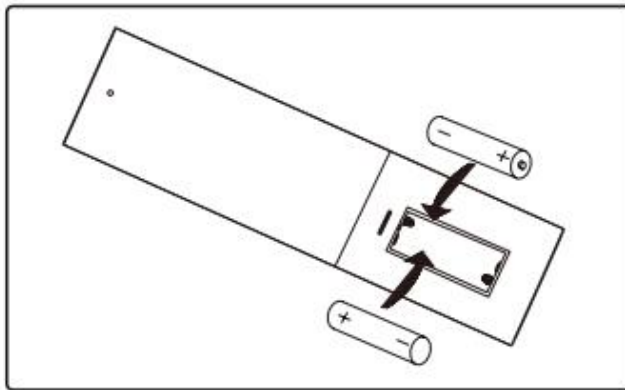
8. Insert the supplied wall anchors into 2 screw holes on the wall.
9. Insert the supplied screws into the wall anchors.
10. Fix and tighten the screws on the wall.
11. Hang the Sound Bar main unit on the screws.



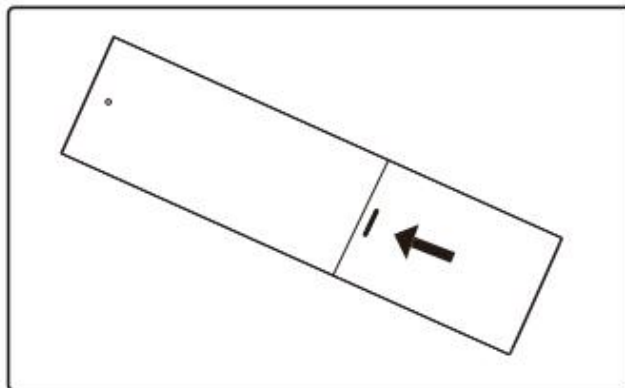
Remote Control Battery Replacement



A. Remove the battery compartment cover.

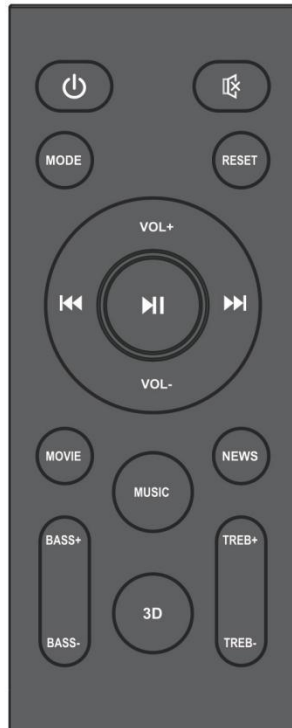


B. Insert 2 AAA batteries according to the marking inside compartment.



C. Close the compartment.

Remote Control



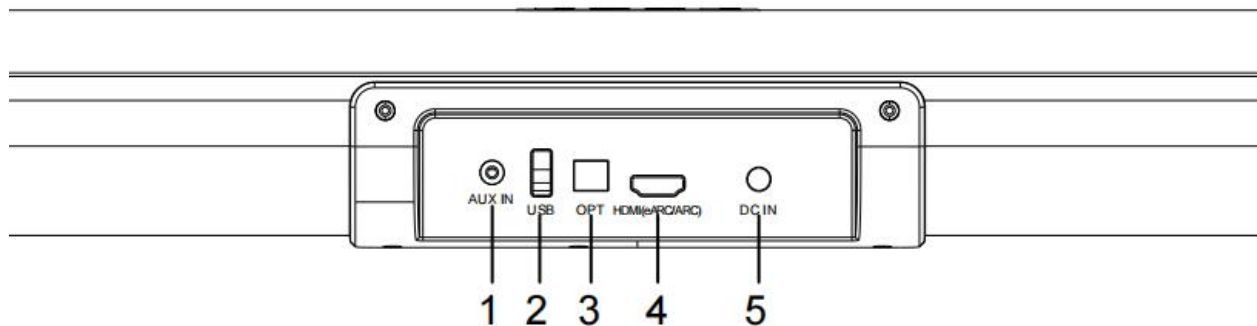
| | | | |
|--------------|------------------------------------|--------------|---|
| | Power on / off | MODE | Change input source (ARC, Optical, AUX, BT) |
| | Mute / Unmute | MOVIE | Movie equalizer mode |
| VOL + | Increase volume | MUSIC | Music equalizer mode |
| VOL - | Decrease volume | NEWS | Dialogue equalizer mode |
| | Previous track | BASS+ | Increase bass |
| | Pause / Play | BASS- | Decrease bass |
| | Next track | TREB+ | Increase treble |
| 3D | 3D sound effect | TREB- | Decrease treble |
| RESET | Reset volume, EQ, Input to default | | |

Display Input Indicators

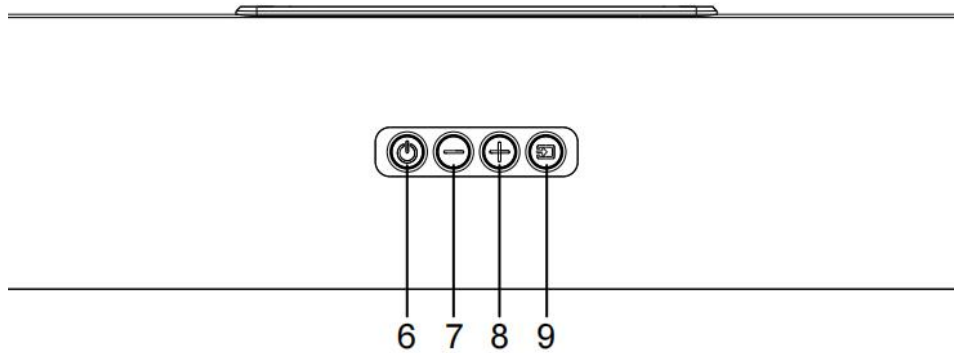


Note: The sound bar remains power on at all times. After setting the sound bar to the ideal volume, most of our users do not need to use our remote. The sound will automatically play when TV is on.

Soundbar Jack and Button



1. AUX IN
2. USB playback
3. Optical in
4. HDMI eARC/ARC
5. DC IN



6. Short press to turn on/power off
7. Decrease volume
8. Increase volume
9. Short press to change mode to BT/AUX/OPT/ARC

Operation

HDMI eARC/ARC

To connect the sound bar to an ARC-compatible TV, please follow these steps:

1. Connect the included HDMI cable to the **HDMI eARC/ARC** port on the sound bar.
2. Connect the other end of the HDMI cable to the ARC port on your TV.
3. Change the sound bar input to ARC by pressing the MODE button on the remote or the sound bar until “ARC/EARC” is shown on the sound bar display.

IMPORTANT: Before use, please make sure that your TV is HDMI-ARC compliant and your TV inputs setting HDMI control must be turned on.

Digital Audio Out (Optical)

To connect the sound bar to a TV with a Digital Audio Out (Optical) port, please follow these steps:

1. Connect the optical cable(not included) to the Digital Audio Out (Optical) port on your TV.
2. Connect the other end of the optical cable to the OPT port on the sound bar.
3. Change the sound bar input to OPT by pressing the MODE button on the remote or the soundbar until "OPT" is shown on the sound bar display.

NOTE: Please remember to change your TV audio input to Audio Out / External Speaker.

AUX / Audio Out

To connect the sound bar to a TV with an AUDIO OUT / Headphone port, please follow these steps:

1. Connect the RCA to 3.5 mm audio cable (not included) or a 3.5 mm audio cable (not included) to the AUDIO OUT port on your TV.
2. Connect the other end of the cable to the AUX port on the sound bar.
3. Change the sound bar input to AUX by pressing the MODE button on the remote or the sound bar until "AUX" is shown on the sound bar display.

Note:

- Please remember to change your TV's audio input to Audio Out / External Speaker.
- Make sure that you connect to the AUDIO OUT/Headphone port on your TV. Some TVs only have AUDIO IN, which will not work with any external speakers.

USB Mode (Flash Drive Only)

The sound bar can play MP3 and WAV audio files directly from USB flash drives up to 64GB in size. To play the first compatible track in USB mode, insert a compatible drive into the USB port on the back of the

sound bar. You can then use the media controls on the remote control to play, pause, and navigate between tracks on the flash drive.

Bluetooth

To connect your Bluetooth device to the sound bar, please follow these steps:

1. Use either the buttons on the soundbar or the "BT" button on the remote to enter Bluetooth input. The flashing "BT" LED indicator will confirm that you are in Bluetooth mode.
2. Go to the Bluetooth function on your phone or other Bluetooth device and select "Majority Elias".
3. You will hear a tone when the pairing is successful, and the BT LED will stop flashing.

Notes:

- If your Bluetooth device is switched off or manually disconnected, the soundbar will automatically enter pairing mode.
- To connect a different Bluetooth device to sound bar that is already connected with Bluetooth: Press and hold the "Play/Pause" button on the remote for 5 seconds. This will cause the "BT" on the sound bar display to start flashing again, indicating that the sound bar is now ready to be paired to a new device.

Troubleshooting

Q) No sound comes out after connecting to the TV using ARC/ Optical (Common):

Please make sure the HDMI cable is plugged in to the "HDMI(eARC/ARC)" port on the soundbar, and your TV support ARC output. The ARC port on TV is labeled differently than the regular HDMI port. Then go to Setting in your TV Setting (may vary due to different brands):

1)Setting > Sound > Select Speaker to: external speaker (optical mode)/ turn off TV Speaker

2)ARC: Setting > Sound(audio) > Sound output > Receiver (HDMI) Optical: Speaker Settings> Speaker Select > Audio Out.

Please select the correct input mode on the soundbar shown on the LED display.

Q) Why won't my Bluetooth device connect to the sound bar?

- You have not enabled the Bluetooth feature on your device or the sound bar.
- The sound bar is connected to another Bluetooth device if the LED display is not flashing. Disconnect the connected device and try again.
- Long Press the "Play/Pause" button on the remote to reset Bluetooth.

Q) Why am I hearing buzzing or humming?

- Ensure all cables and wires are securely connected.
- Connect a different source device (TV, Blu-ray player, etc.) to see if the buzzing persists. If it does not, the problem may be with the original device.
- Connect your device to a different input on the sound bar.

Q) Remote not working.

- 1: Double-check if the batteries are installed correctly in the battery slot.
- 2: Replace two brand new AAA batteries.
- 3: Point the remote to the center of the sound bar (IR is built in the middle of the LED.)

Technical Specifications

| | |
|----------------------|----------------------|
| Model | Majority Elias 2.0.2 |
| Power output: | 80 Watts |

| | |
|-----------------------------------|--|
| Connectivity | Bluetooth / AUX IN / USB Playback / Optical / HDMI(eARC/ARC) |
| 3D Audio Technology | Dolby Atmos |
| Frequency Response | 80Hz-18KHz |
| Signal-to-Noise Ratio | >70 dB |
| Power Input | 20V,2.5A adaptor for Soundbar |
| Bluetooth | V5.3, Range: up to 15 meter (Straight line) |
| Soundbar Dimension (L*W*H) | 610 x 91 x 67.8 MM |