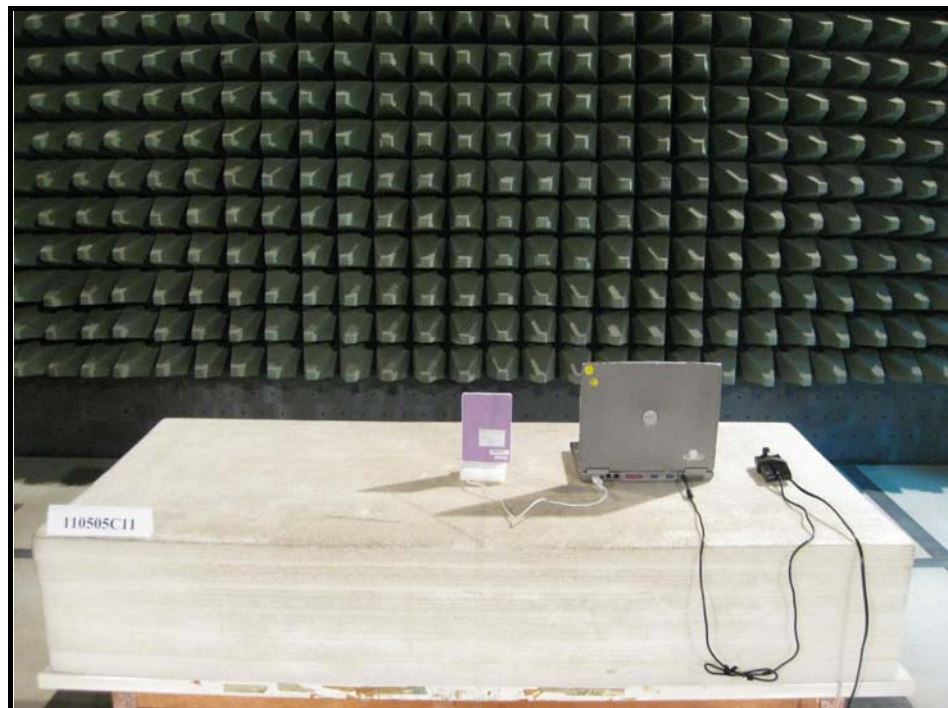


PHOTOGRAPHS OF THE TEST CONFIGURATION CONDUCTED EMISSION TEST

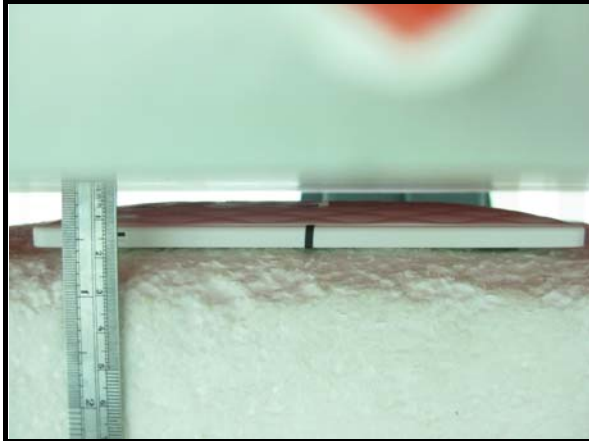


RADIATED EMISSION TEST

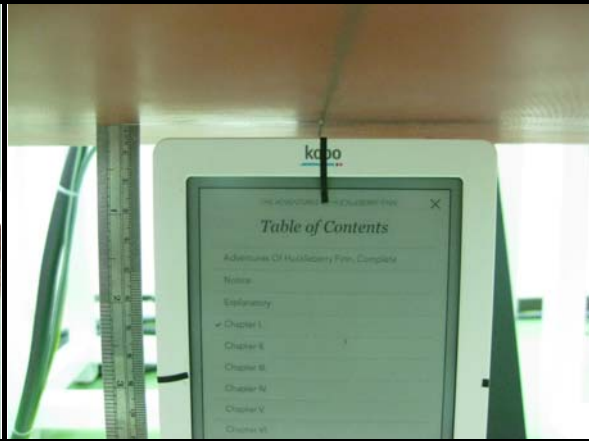


(SAR Test Set Up Photos)

BODY POSITION:



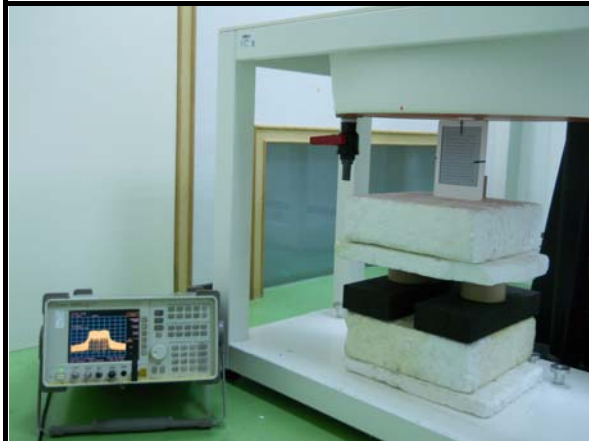
BOTTOM



TOP

One plane of appearance is an arc, so the test distance looks like > 5mm. But the test distance is 5mm.

Test distance is 5mm.



TEST SET UP PHOTO



DESCRIPTION OF ANTENNA LOCATION



EUT PHOTO (ARC PLANE)

NOTE: The EUT face to the phantom with 5mm-separation distance.