

User Manual

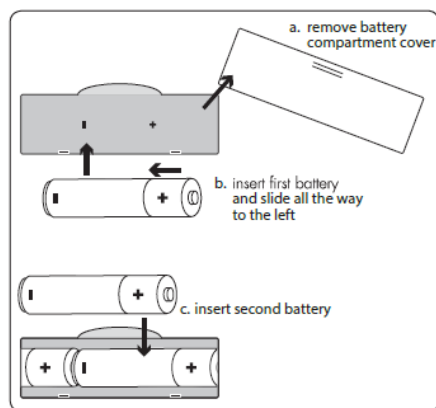


This is 2.4G Wireless keyboard and Wireless Mouse.

- Nano receiver, plug and play
- Working distance: 8~10 meters
- Keyboard size: 455*210*30 mm
- Mouse size: 109*75*38 mm
- Keyboard has 14 hot keys for most common used multimedia and office use
- Keyboard with volume controller, convenient for end-users' to adjust volume.
- Mouse with 6D: left button, right button, scroll, DPI, forward, backward
- Mouse with 800/1200/1600DPI by pressing mid "DPI" button to shift DPI
- Product compatible with Windows® XP、Windows Vista®, Windows® 7, Windows® 8, Windows® 10 and Mac
- Keyboard powered by 2 pcs AA batteries; Mouse powered by 2 pcs AAA batteries

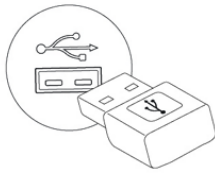
Pls follow steps to start to use this 2.4G wireless keyboard and mouse combo

1st step: install batteries to both mouse and keyboard battery compartments.



2nd Step: switch mouse bottom power "on/off" button to be "ON" place

3rd step: plug mouse USB receiver into computer USB port



4th step: computer will search this new device and find it automatically. You can start to use it freely.

If you do not use this keyboard and mouse for 5 minutes, keyboard and mouse will enter into automatically power saving mode.

If you do not want to use it for a long time, Please switch mouse bottom "ON/OFF" button to off. Of course, it would be the best to take keyboard and mouse batteries out.

NOTE: This equipment has been tested and found to comply with the limits for a Class B digital device, pursuant to part 15 of the FCC Rules. These limits are designed to provide reasonable protection against harmful interference in a residential installation. This equipment generates uses and can radiate radio frequency energy and, if not installed and used in accordance with the instructions, may cause harmful interference to radio communications. However, there is no guarantee that interference will not occur in a particular installation. If this equipment does cause harmful interference to radio or television reception, which can be determined by turning the equipment off and on, the user is encouraged to try to correct the interference by one or more of the following measures:

- Reorient or relocate the receiving antenna.
- Increase the separation between the equipment and receiver.
- Connect the equipment into an outlet on a circuit different from that to which the receiver is connected.
- Consult the dealer or an experienced radio/TV technician for help

Changes or modifications not expressly approved by the party responsible for compliance could void the user's authority to operate the equipment.

This device complies with Part 15 of the FCC Rules. Operation is subject to the following two conditions:

- (1) this device may not cause harmful interference, and
- (2) this device must accept any interference received, including interference that may cause undesired operation.