

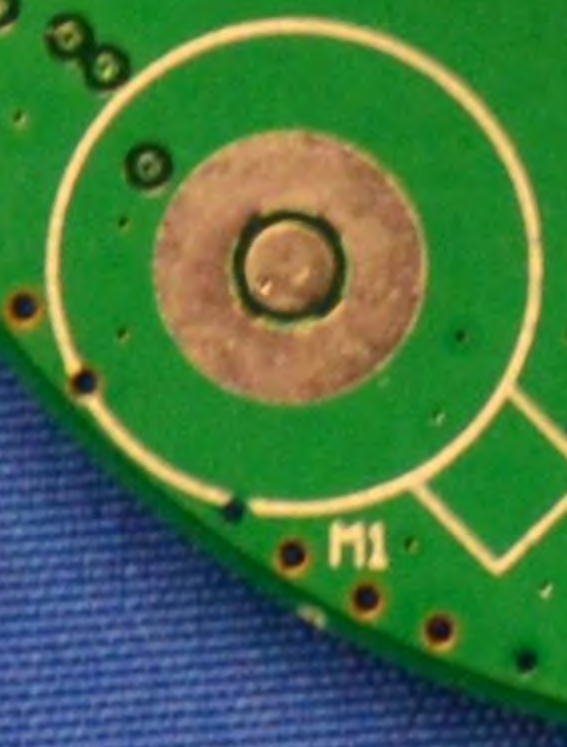
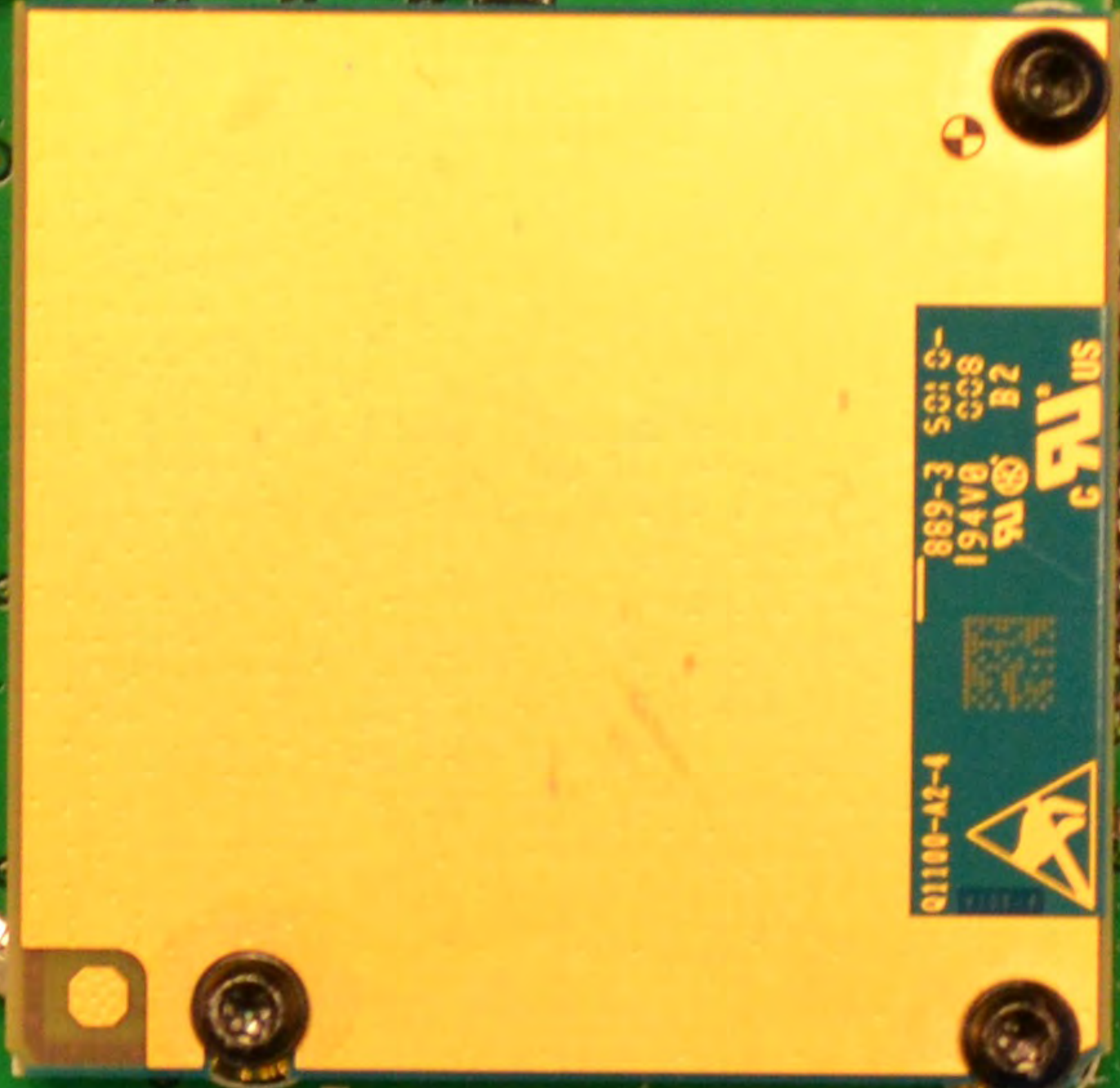
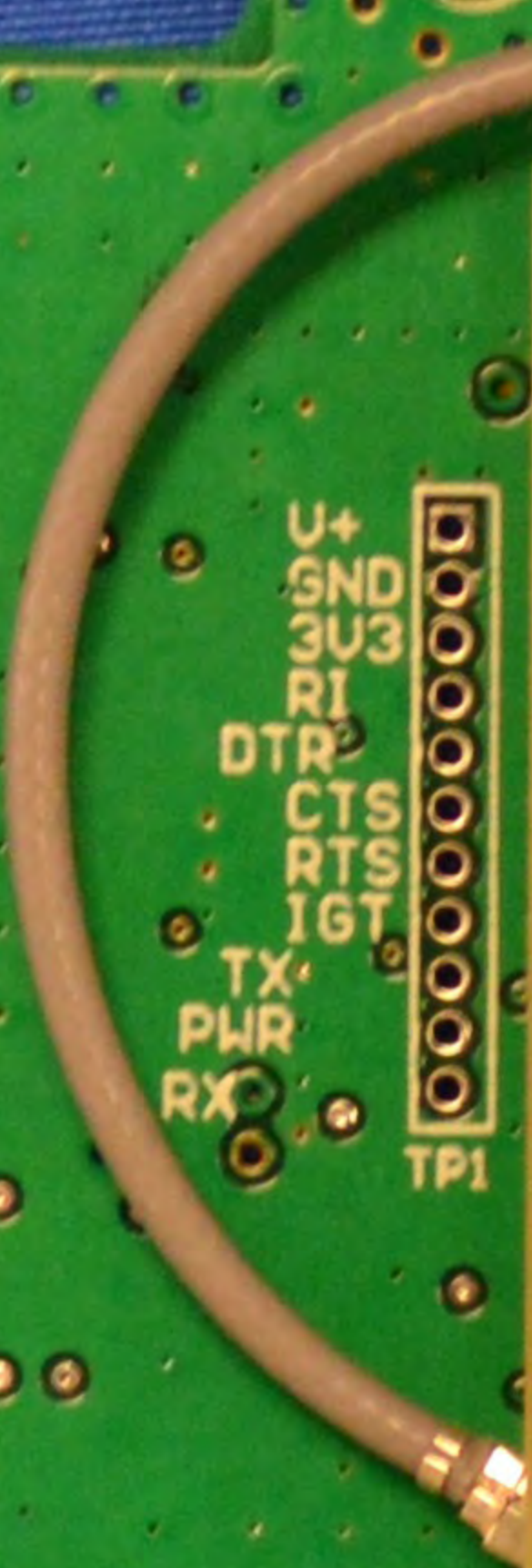
BF 94V-0
4811

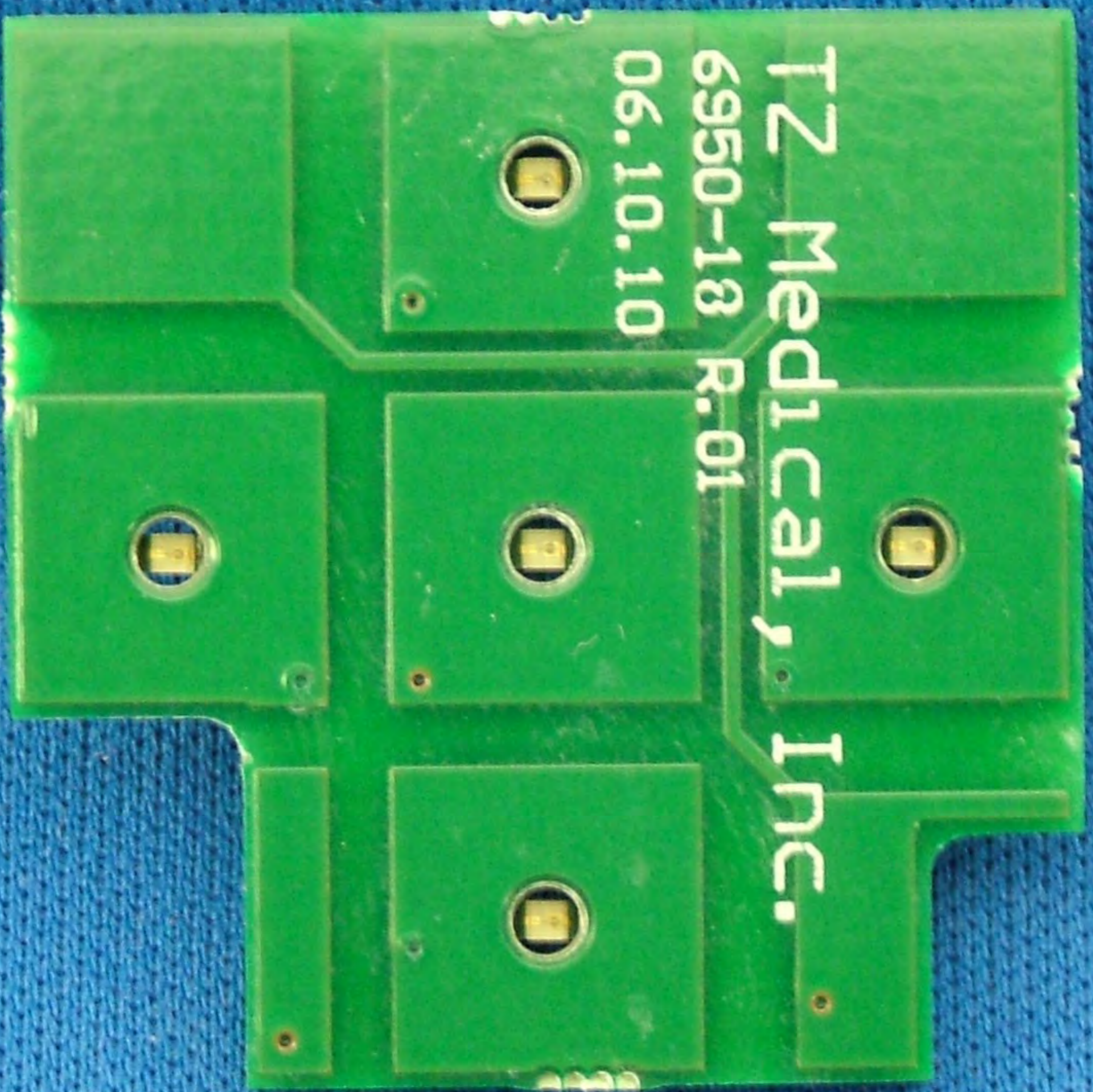
C51 L4 C50 L5 C49 P2

U+ GND
3U3 RI
DTR CTS
RTS IGT
TX PWR
RX
TP1

01100-A2-4
SMC
889-3 SCI C-
194V8 C08
2 B
SMC
US

R21 C20 C48
U5 R20 C21
U6 C26 R14 R10 C28 C9
C47 C27

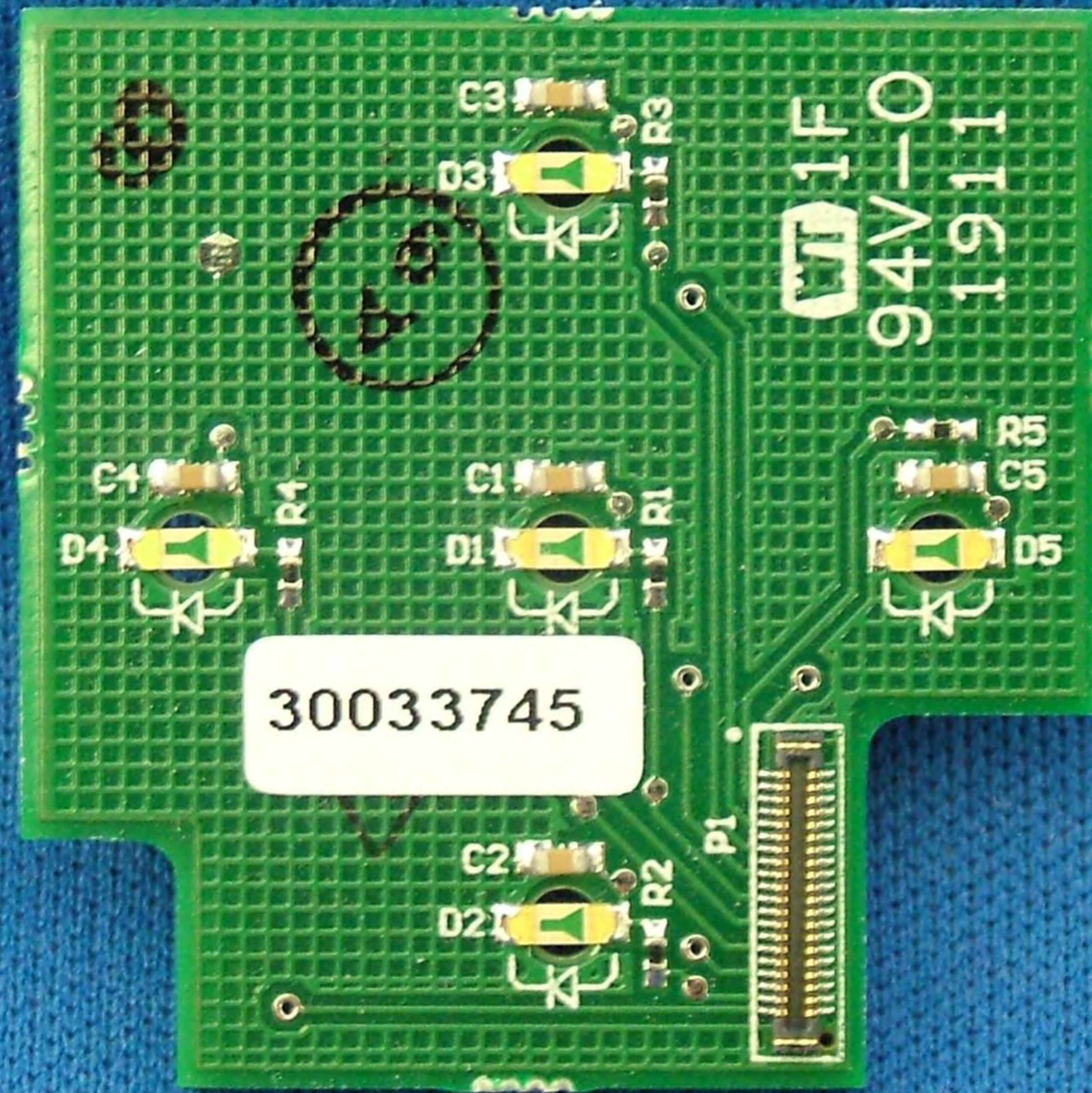




TZ Medical, Inc.

6950-13 R:01

06.10.10



30033745

1F
94V-0
1911

C1
D4
R1

C1
D1
R1

C2
D2
R2

C3
D3
R3

R5
C5
D5

P1