

KM5A
94V-0 1911

uSD1

D1
C87
R75
R77
R78
R79
C88
C89

R43
C31
U2
C32
R45
R46
R47
R48
R49
R50
R51
R52
R53
R54
R55
R56
R57
R58
R59
R60
R61
R62
R63
R64
R65
R66
R67
R68
R69
R70
R71
R72
R73
R74
R75
R76
R77
R78
R79
R80
R81
R82
R83
R84
R85
R86
R87
R88
R89
R90
R91
R92
R93
R94
R95
R96
R97
R98
R99
R100

U3
C40
C41
C44
C45
C46
C47
C48
C49
C50
C51
C52
C53
C54
C55
C56
C57
C58
C59
C60
C61
C62
C63
C64
C65
C66
C67
C68
C69
C70
C71
C72
C73
C74
C75
C76
C77
C78
C79
C80
C81
C82
C83
C84
C85
C86
C87
C88
C89
C90
C91
C92
C93
C94
C95
C96
C97
C98
C99
C100

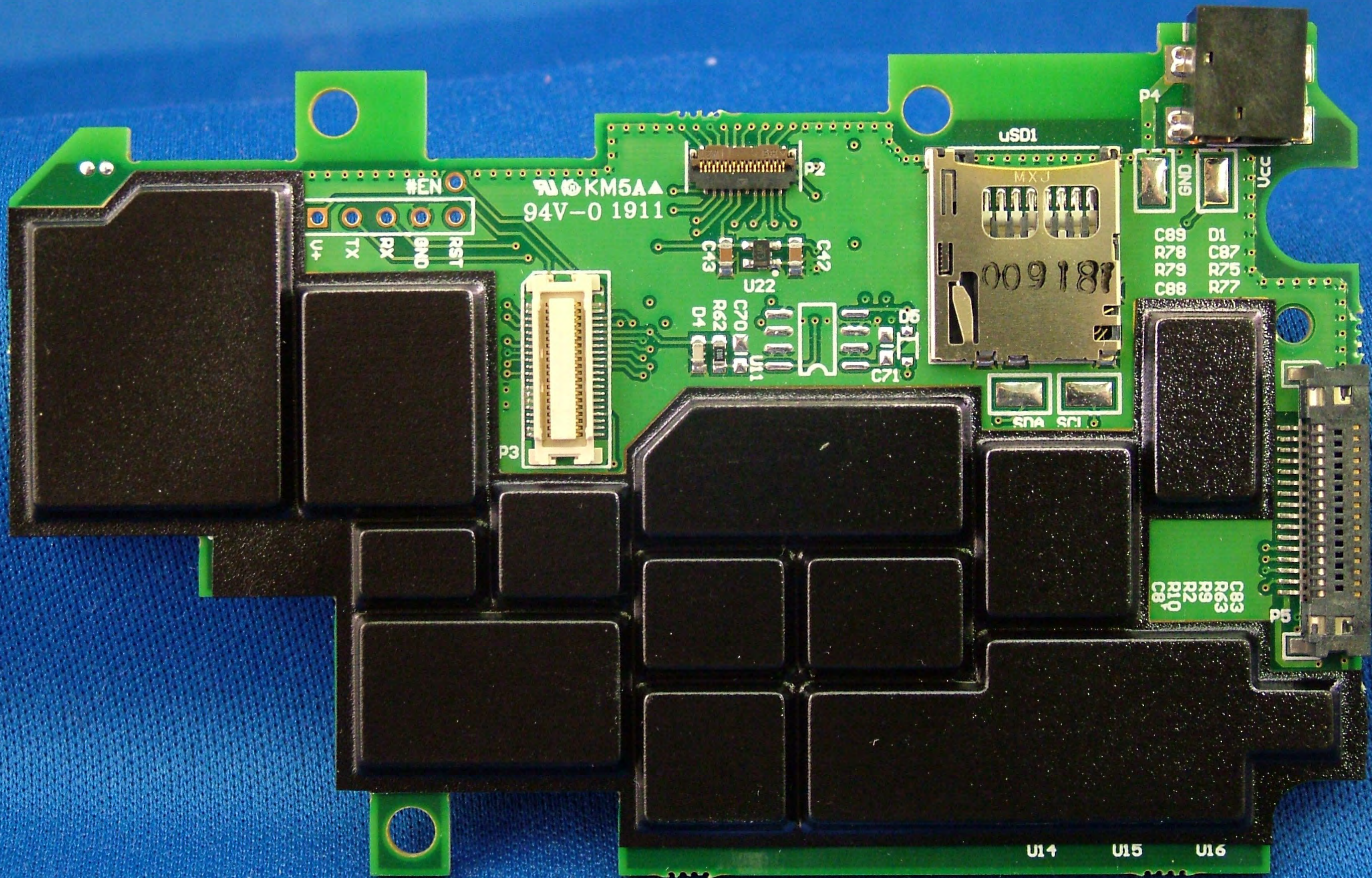
U6
40 LABS
GOLDELOX
1037Y75

U7
ATMEL
MEGAB8PA
MU1024
CHINA-8
DF528

U4
U5
U10
U11
U12
U13
U14
U15
U16
U17
U18
U19
U20
U21
U22
U23
U24
U25
U26
U27
U28
U29
U30
U31
U32
U33
U34
U35
U36
U37
U38
U39
U40
U41
U42
U43
U44
U45
U46
U47
U48
U49
U50
U51
U52
U53
U54
U55
U56
U57
U58
U59
U60
U61
U62
U63
U64
U65
U66
U67
U68
U69
U70
U71
U72
U73
U74
U75
U76
U77
U78
U79
U80
U81
U82
U83
U84
U85
U86
U87
U88
U89
U90
U91
U92
U93
U94
U95
U96
U97
U98
U99
U100

U14
U15
U16
U17
U18
U19
U20
U21
U22
U23
U24
U25
U26
U27
U28
U29
U30
U31
U32
U33
U34
U35
U36
U37
U38
U39
U40
U41
U42
U43
U44
U45
U46
U47
U48
U49
U50
U51
U52
U53
U54
U55
U56
U57
U58
U59
U60
U61
U62
U63
U64
U65
U66
U67
U68
U69
U70
U71
U72
U73
U74
U75
U76
U77
U78
U79
U80
U81
U82
U83
U84
U85
U86
U87
U88
U89
U90
U91
U92
U93
U94
U95
U96
U97
U98
U99
U100

U14
U15
U16
U17
U18
U19
U20
U21
U22
U23
U24
U25
U26
U27
U28
U29
U30
U31
U32
U33
U34
U35
U36
U37
U38
U39
U40
U41
U42
U43
U44
U45
U46
U47
U48
U49
U50
U51
U52
U53
U54
U55
U56
U57
U58
U59
U60
U61
U62
U63
U64
U65
U66
U67
U68
U69
U70
U71
U72
U73
U74
U75
U76
U77
U78
U79
U80
U81
U82
U83
U84
U85
U86
U87
U88
U89
U90
U91
U92
U93
U94
U95
U96
U97
U98
U99
U100



KM5A
94V-0 1911

uSD1

#EN
U+ TX RX GND RST

D1
C87
R75
R77
C88

C83
R83
R89
R92
C89

U14 U15 U16

P2

P3

P5

P4

U22

D4

U1

C71

R62

C70

C43

C42

GND

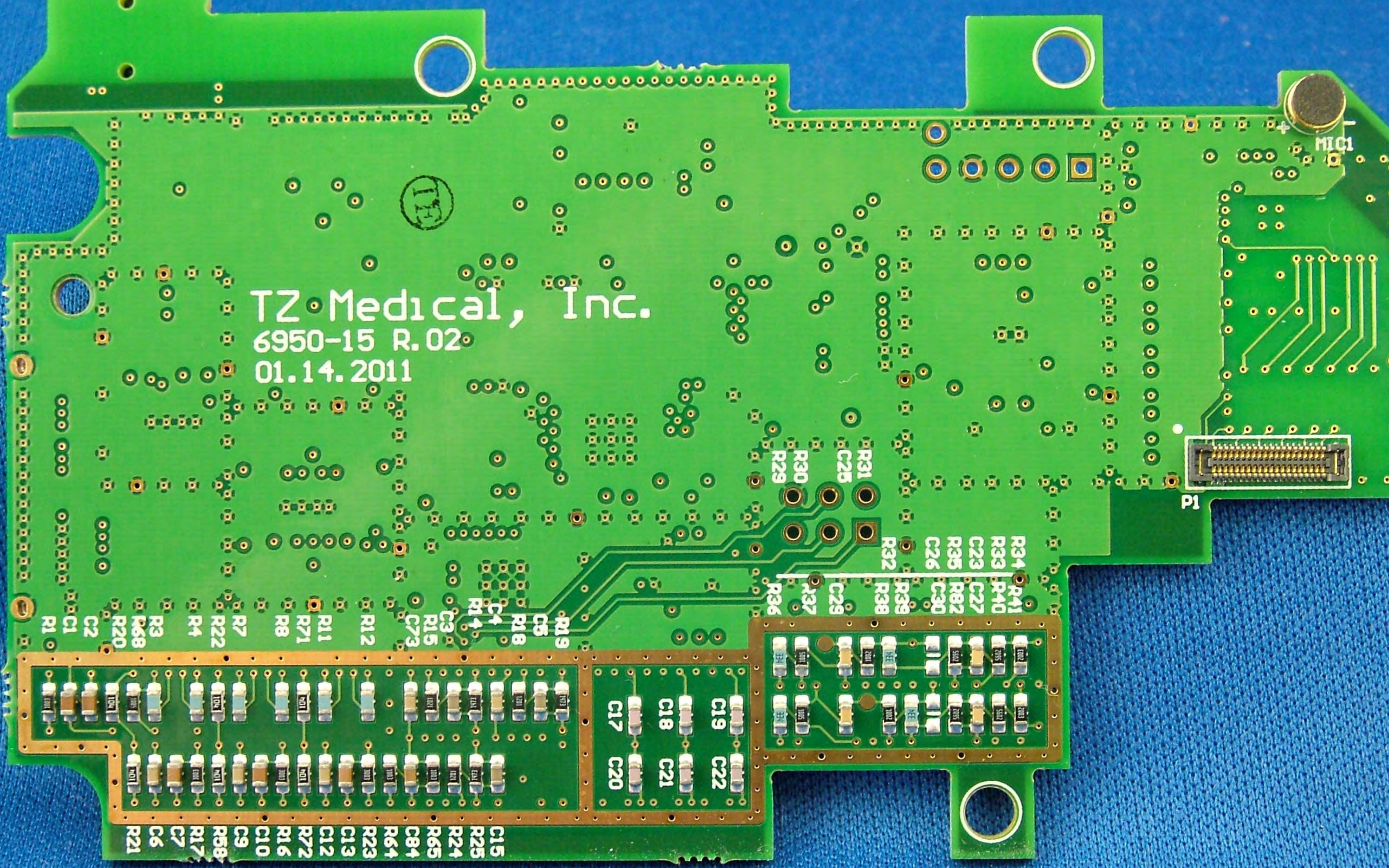
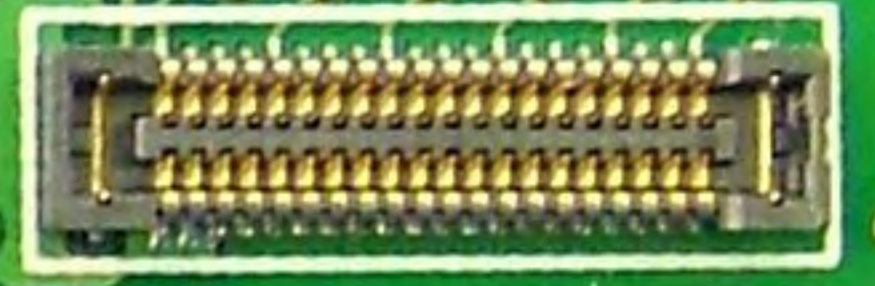
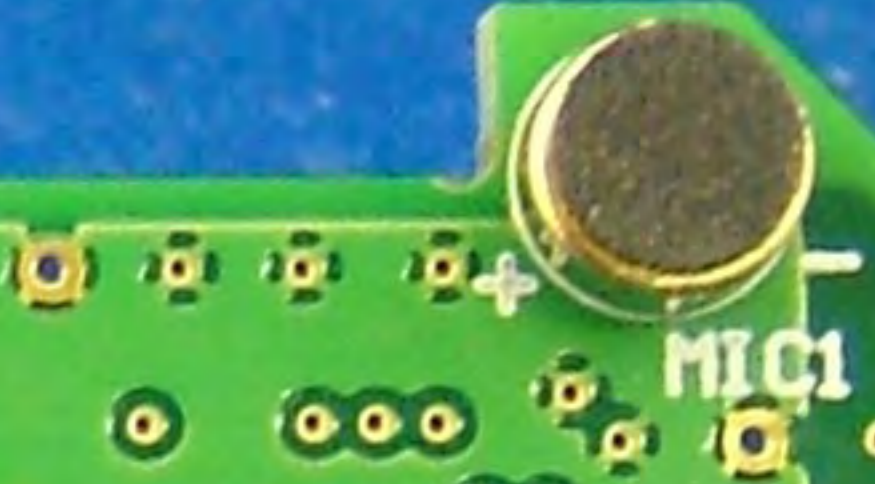
VCC

SNA SCI

MXJ

009181

TZ Medical, Inc.
6950-15 R.02
01.14.2011



TZ Medical, Inc.
6950-15 R.02
01.14.2011

MIC1

P1

R34 R41
R33 R40
C23 C27
R35 R82
C26 C30
R32 R38
R39
R36 R37
R29 R30
R29 R30
R31
C25
R19
C5
R18
C4
R14
C3
R15
C73
R12
R11
R71
R8
R7
R22
R4
R3
R68
R20
C2
R1

C15
R25
R24
R65
R84
R23
C13
R72
R16
C10
C9
R58
R17
C6
R21

TZ Medical, Inc.

6950-16 R.01
01.14.2011

KM5A
94V-0
1911

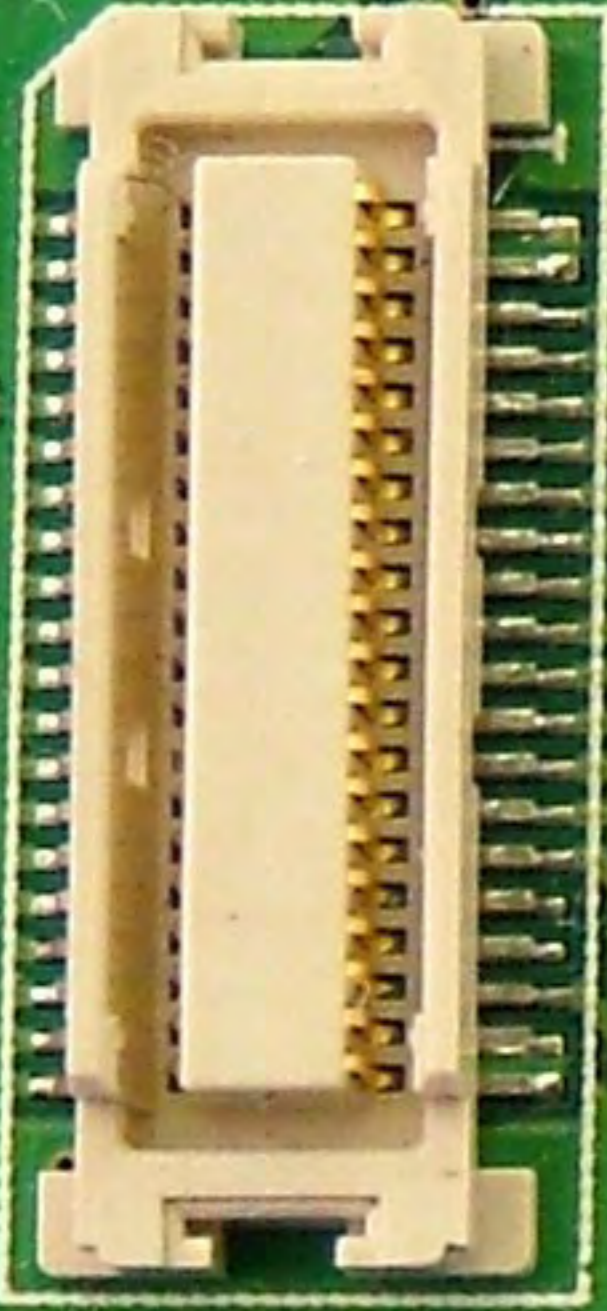
ERS

UCC

UDAT

GND

S1

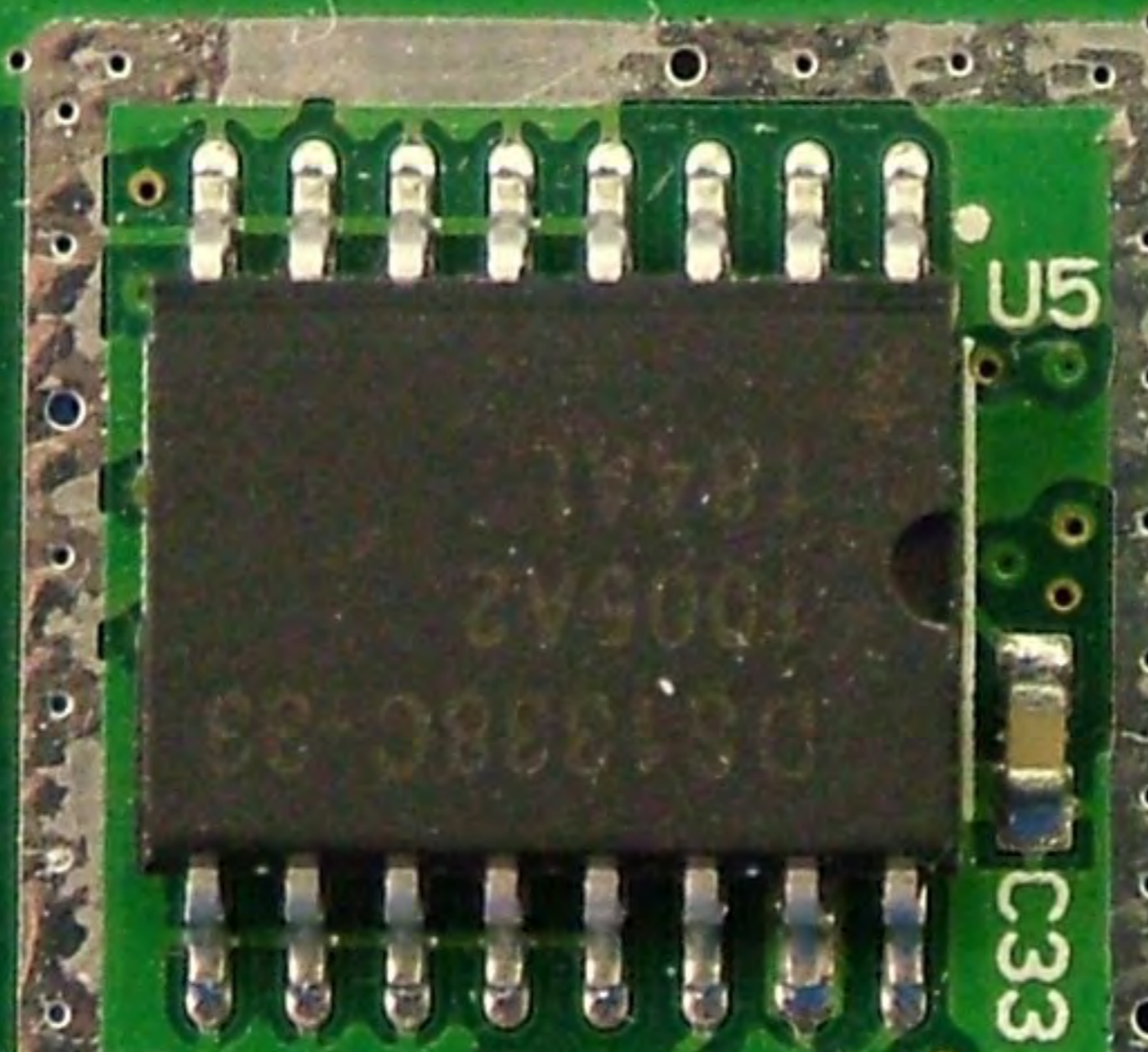
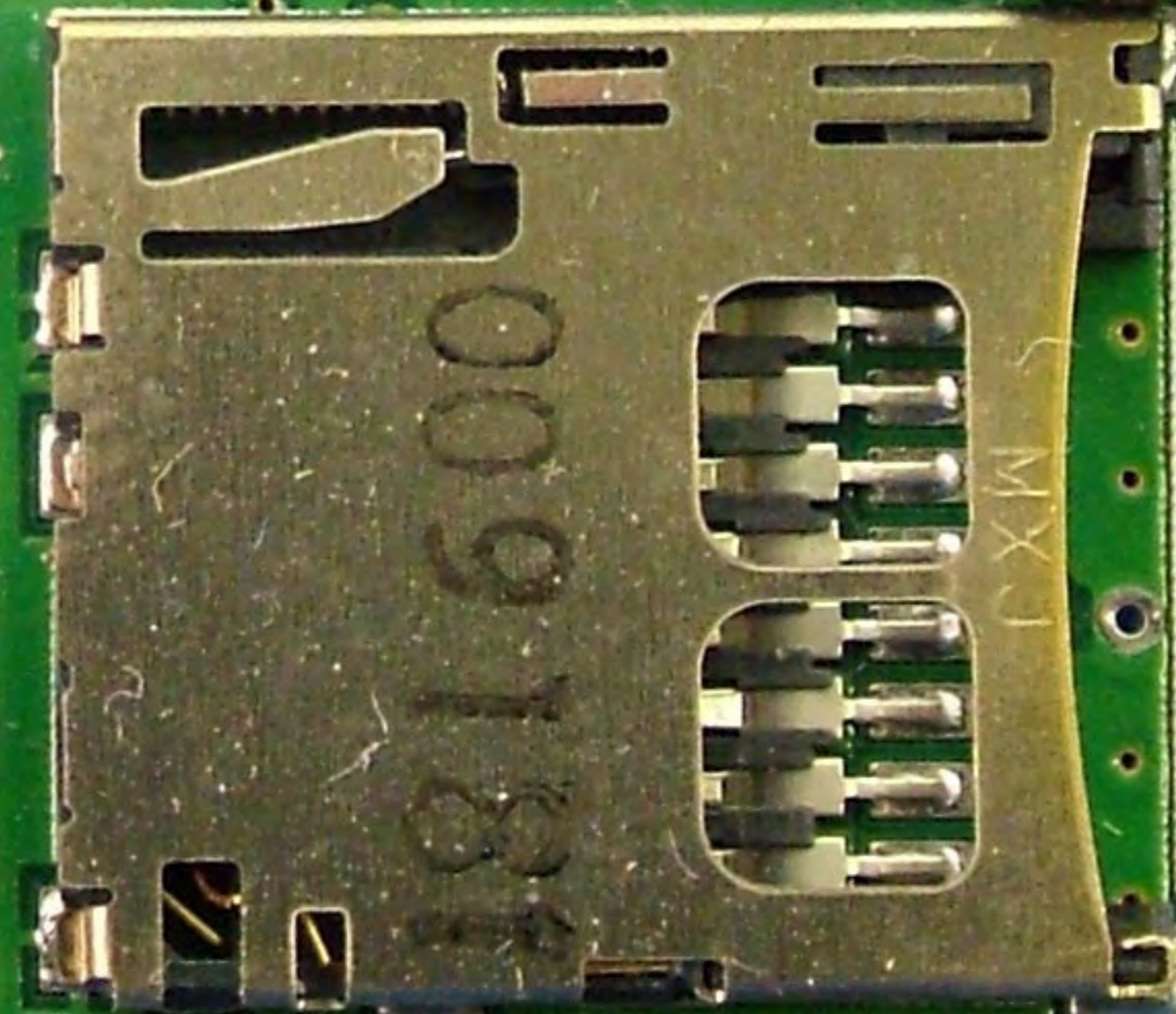


P3

WO 30033741 SN 1024010

P2

USD1



U5

C33

C34



R35

Q5

U6

D3

