

1. Features	3
2. Specification	3
3. VSWR & Polar Diagram	4
3.1 WTS-915	4
3.2 WTS-868	5
4. Mechanical	8
5. Package	8
6. Order Info	8

1. Features

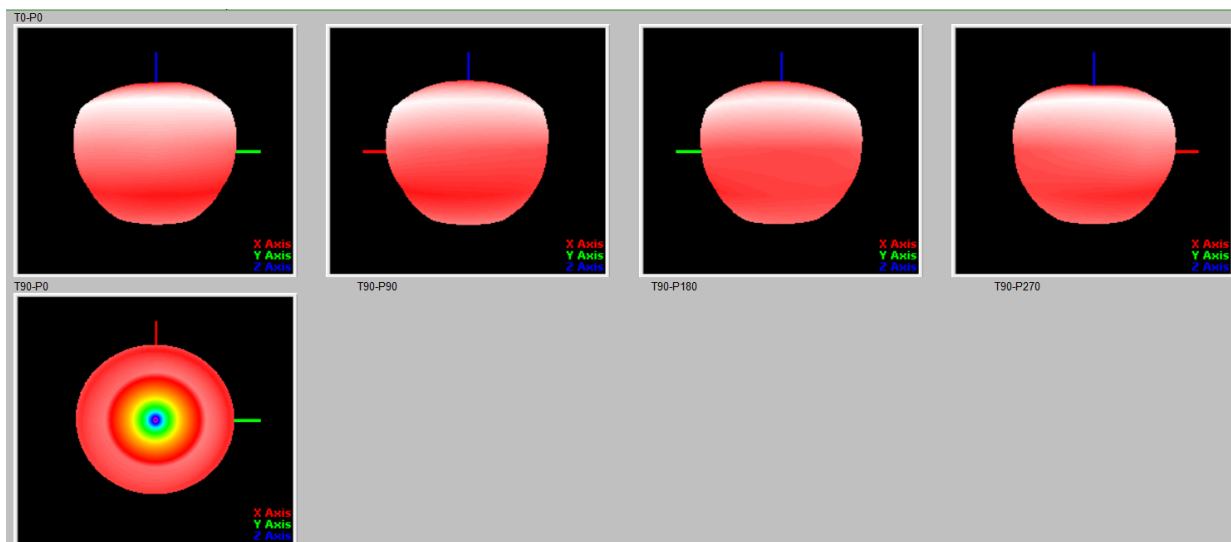
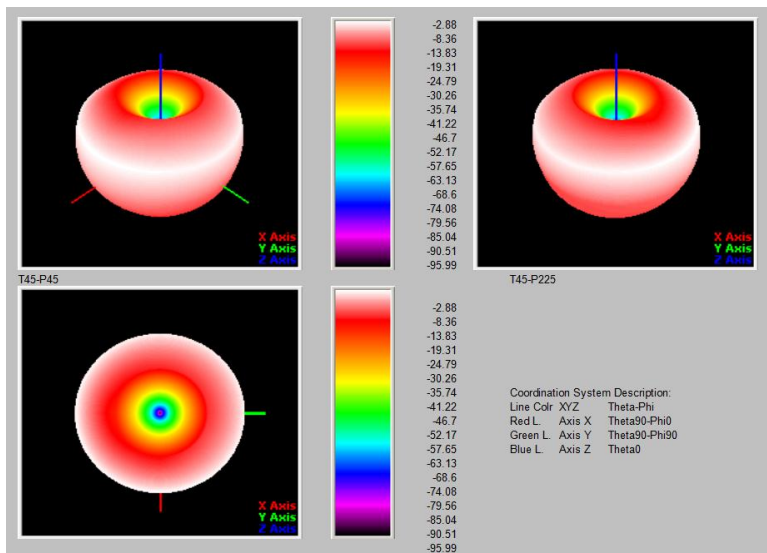
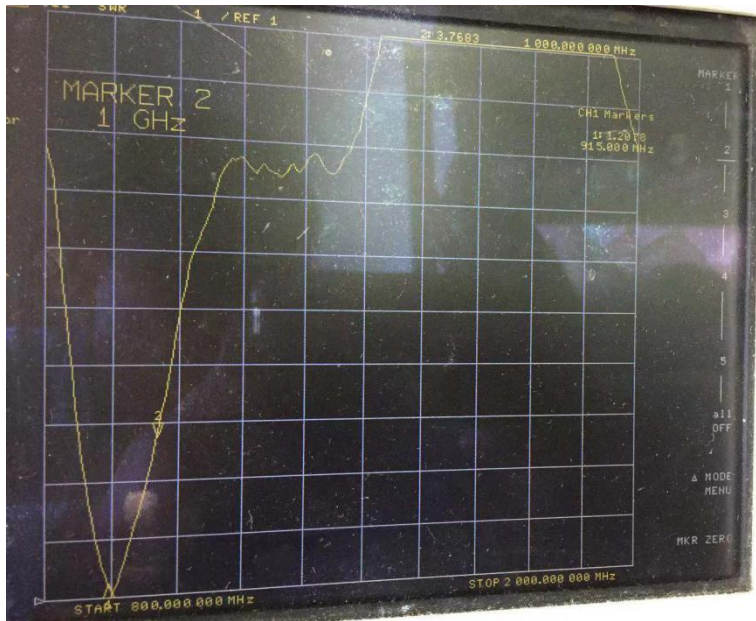
- Spring antenna designed for LoRa IoT Application.
- Antenna long:2.4cm
- Omni Directional
- Max Gain: 2dB
- Frequency range: 860 ~ 930Mhz (Different Models)
- Straight welding

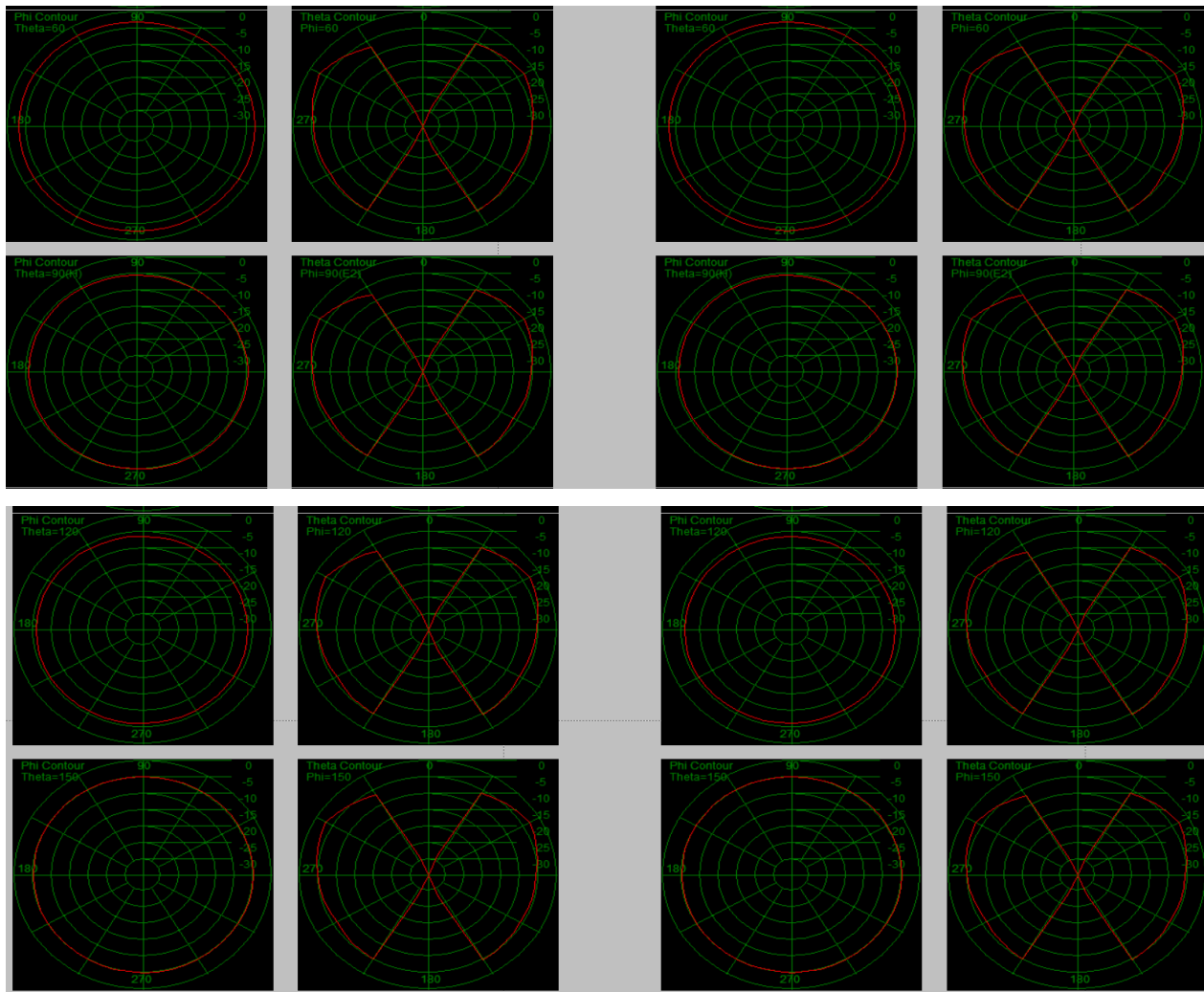
2. Specification

Frequency Range	860 ~ 930Mhz
Max Gain	2.0dB
VSWR	≤ 1.8
Efficient	> 50%
Beam Width	360°
Impedance	50 Ω
Polarization Form	Vertical
Connector	Straight welding
Dimension	24±1mm

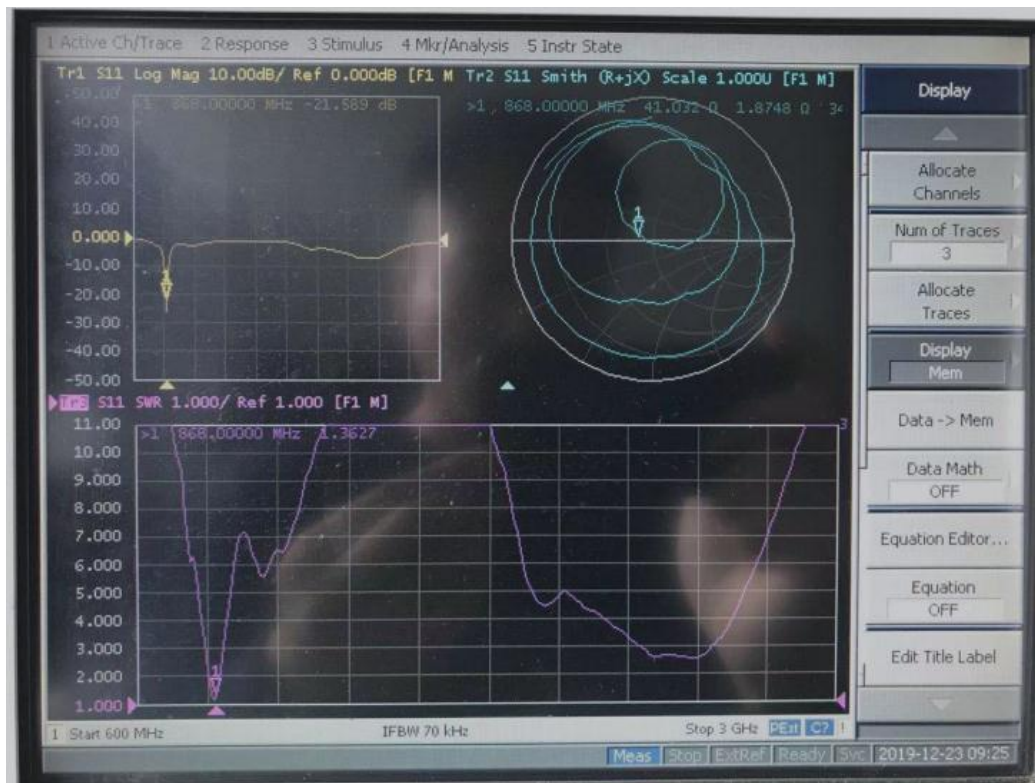
3. VSWR & Polar Diagram

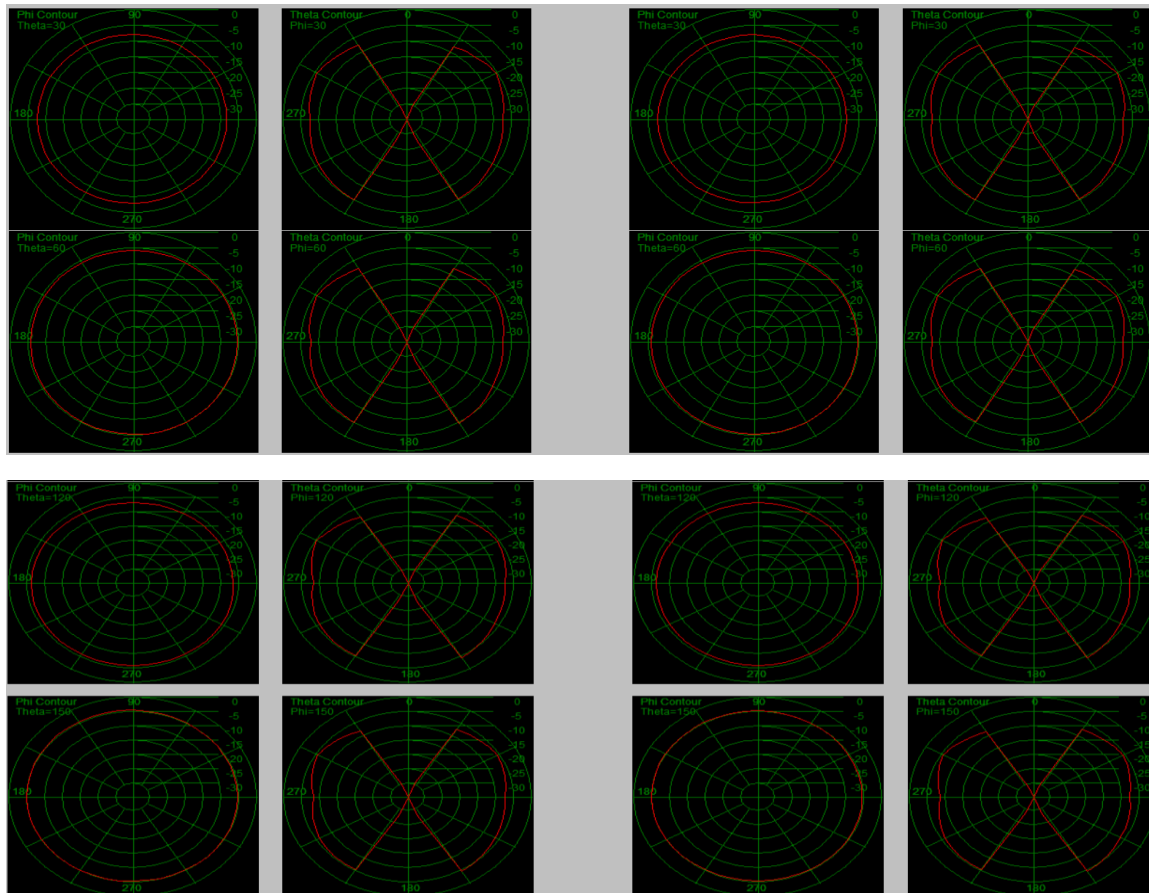
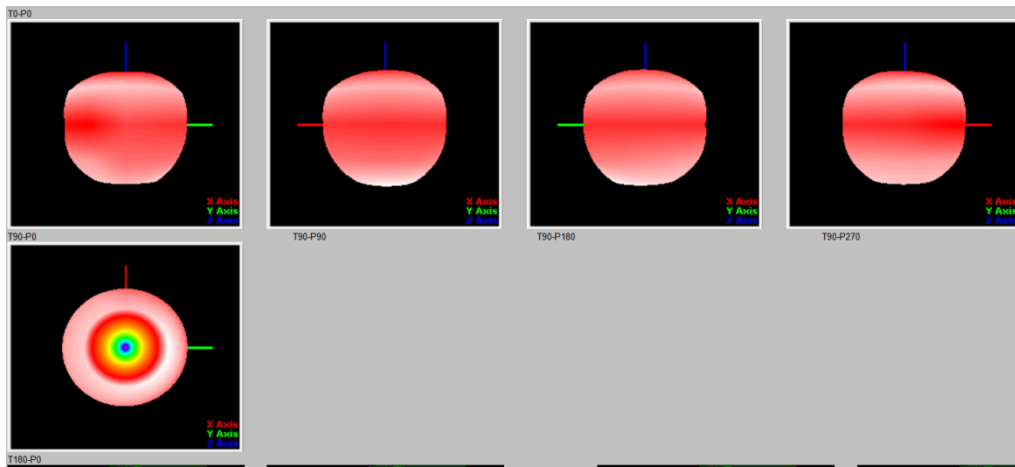
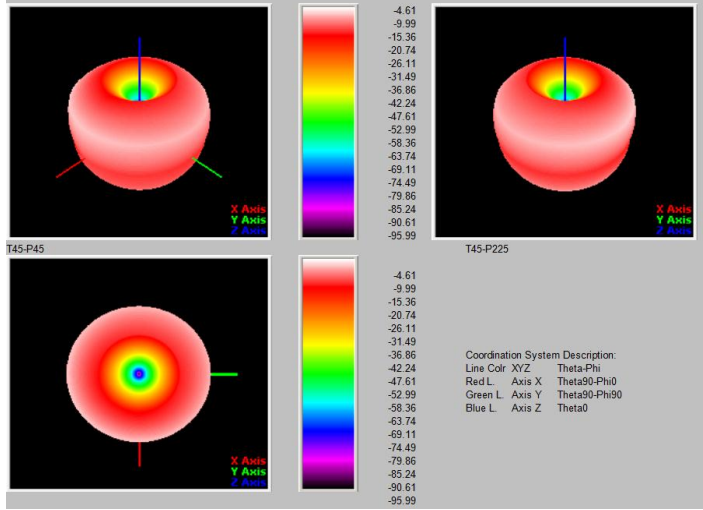
3.1 WTS-915



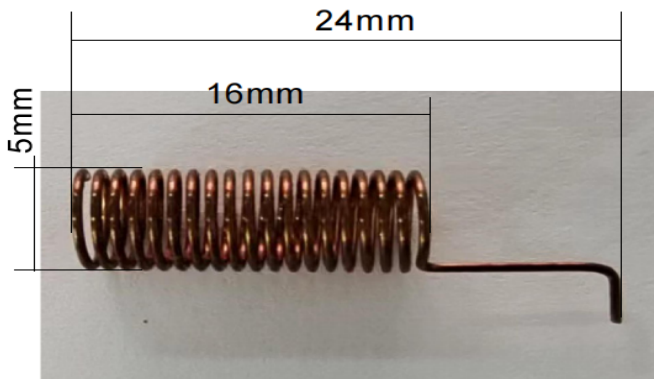


3.2 WTS-868





4. Mechanical



5. Package

Antenna x 1

6. Order Info

PART: WTS-XXX:

XXX: *Frequency Band*

- **868:** valid frequency: 863Mhz ~ 870Mhz.
- **915:** valid frequency: 902Mhz ~ 928Mhz.