



ONE PLUS ONE
Wireless Communication

深圳市一加一无线通讯技术有限公司

承认书

APPROVAL SHEET

| | |
|---------------------|-----------------------|
| 客户 Customer | 翠联 |
| 项目名 Project | GT01-915 |
| 料号 Part NO. | |
| 规格 Specification | 915MHZ Antenna |

| | | | |
|-------------|----------|----------|------------|
| APPROVAL | | | |
| OnePlusOne: | | | |
| RF Check | ME Check | QC Check | Confirm By |
| | | | |
| Customer: | | | |
| EE Check | PM Check | QC Check | Confirm By |
| | | | |

承认签章后请寄回承认书一份

Please return to us one copy of "APPROVAL SHEET" with your approved signatures

| | | |
|--|----------------------|---|
| Project: GT01-915 | Author: Haiou.Zhu | File Name: GT01-915_APP_A.doc |
| Date: 2019-08-30 | | |
| Revision: | A | |
| CONFIDENTIAL | | |
| Shenzhen OnePlusOne Wireless Communication Technology Co.,Ltd. | | |

| | | | |
|------------|-----------|----------------------|------------|
| Date: | Revision: | Updates and changes: | Issued by: |
| 2019-08-30 | A | Initial sheet | Haiou.Zhu |
| | | | |
| | | | |

Contents

| | | |
|--------------|--|------------|
| 1 | ANTENNA DESCRIPTION | 1-3 |
| 1.1 | Part number | 1-3 |
| 1.2 | Antenna pictures | 1-3 |
| 2 | ELECTRICAL PERFORMANCE..... | 2-3 |
| 2.1 | Specificatio..... | 2-3 |
| 2.2 | Measurement Set-up..... | 2-3 |
| 2.2.1 | VSWR and Return Loss | 2-3 |
| 2.2.2 | Efficiency and Gain | 2-3 |
| 3 | REFERENCE MEASUREMENT DATA | 3-4 |
| 3.1 | Passive | 3-4 |
| 3.2 | EFF | 3-4 |
| 3.3 | Matching Circuit Description..... | 3-5 |
| 4 | MECHANICAL DESCRIPTION..... | 4-6 |
| 4.1 | Drawings..... | 4-6 |

| | | |
|--|----------------------|----------------------------------|
| Project:GT01-915 | Author: Haiou.Zhu | File Name: GT01-915_APP_A.doc |
| Date: 2019-08-30 | | |
| Revision: | A | |
| CONFIDENTIAL | | |
| Shenzhen OnePlusOne Wireless Communication Technology Co.,Ltd. | | |

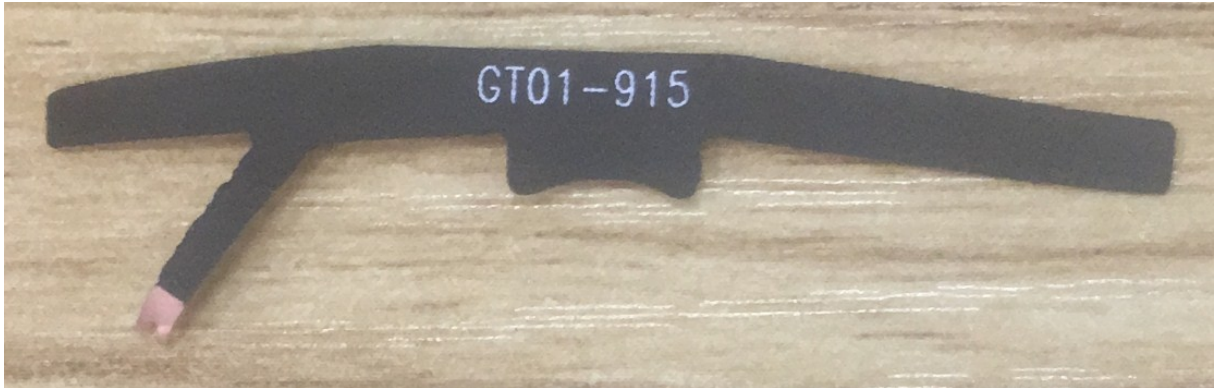
1 Antenna description

It summarize 915MHZ antennas for project GT01.GT01-915antenna's frequency band is 2868-915MHZ, GT01-915antenna's type is MONOPOLE

1.1 Part number

Part number of antenna: GT01-915

1.2 Antenna pictures



2 Electrical Performance

2.1 Specificatio

| | |
|-----------------|--------|
| Frequency Range | 915MHz |
| Return Loss | <-5 |
| Efficiency | >30% |

2.2 Measurement Set-up

2.2.1 VSWR and Return Loss

VSWR measurements (S_{11}) were performed using an Agilent ENA series Network Analyzer and the previously described test fixture. Coaxial chokes were used to mitigate surface currents on the outside of the cabling. The testing was performed in free space.

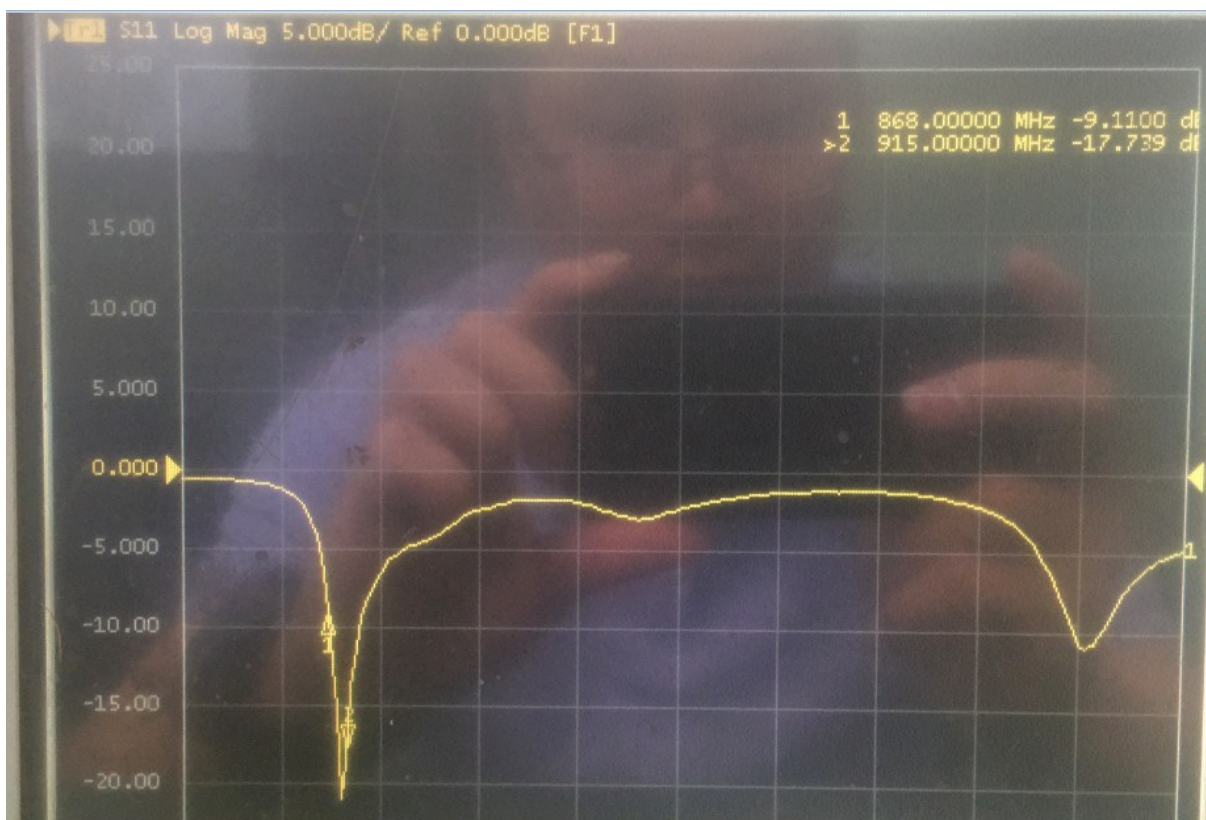
2.2.2 Efficiency and Gain

The gain of the antenna was measured in OPO's 3D anechoic chamber in Shenzhen, China. The chamber is a ETS system capable of doing tests from 380MHz to 6GHz. Coaxial chokes on the feed cable were used to mitigate surface currents during passive tests. The measurement results are calibrated using dipole standards. For TRP and TIS the chamber uses a 8960 / MT8820C to establish the connection with the mobile device and read the power.

| | | |
|--|----------------------|----------------------------------|
| Project:GT01-915 | Author: Haiou.Zhu | File Name: GT01-915_APP_A.doc |
| Date: 2019-08-30 | | |
| Revision: | A | |
| CONFIDENTIAL | | |
| Shenzhen OnePlusOne Wireless Communication Technology Co.,Ltd. | | |

3 Reference measurement data

3.1 Passive



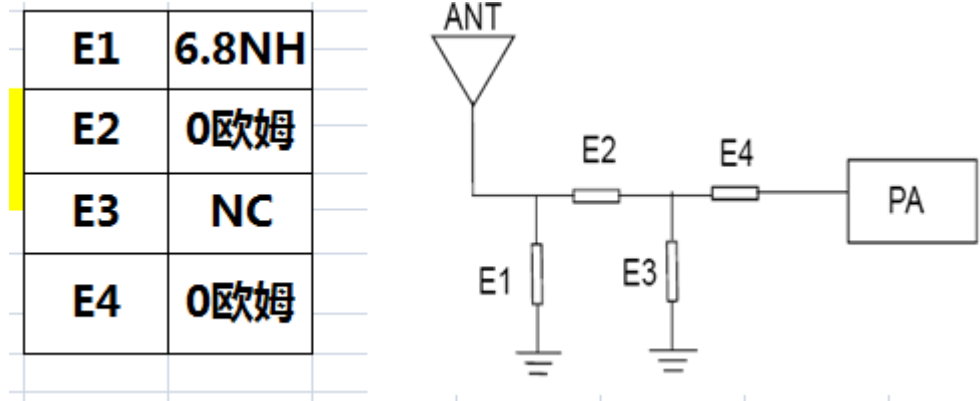
Return Loss

3.2 EFF

| Freq (MHz) | Effi (%) | Effi (dB) | Gain (dBi) |
|------------|----------|-----------|------------|
| 860 | 38.63 | -4.13 | -1.32 |
| 870 | 41.26 | -3.84 | -0.68 |
| 880 | 43.84 | -3.58 | -0.98 |
| 890 | 43.29 | -3.64 | -1.05 |
| 900 | 42.58 | -3.71 | -0.87 |
| 910 | 40.19 | -3.96 | -1.11 |
| 920 | 42.79 | -3.69 | -0.67 |

| | | |
|--|----------------------|----------------------------------|
| Project:GT01-915 | Author: Haiou.Zhu | File Name: GT01-915_APP_A.doc |
| Date: 2019-08-30 | | |
| Revision: | A | |
| CONFIDENTIAL | | |
| Shenzhen OnePlusOne Wireless Communication Technology Co.,Ltd. | | |

3.3 Matching Circuit Description



匹配电路上并联 6.8NH 电感

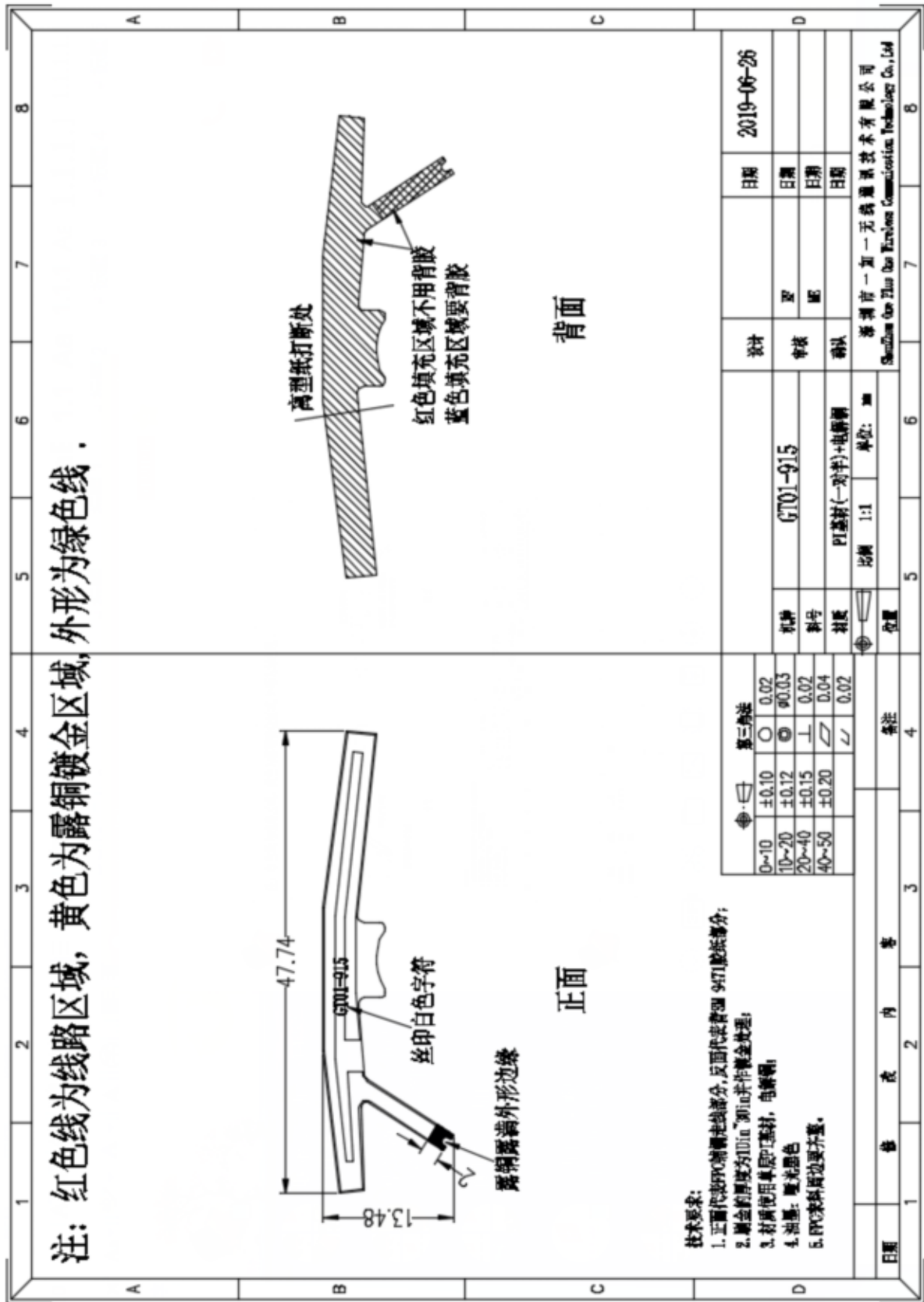


环境处理

| | | |
|--|----------------------|----------------------------------|
| Project:GT01-915 | Author: Haiou.Zhu | File Name: GT01-915_APP_A.doc |
| Date: 2019-08-30 | | |
| Revision: | A | |
| CONFIDENTIAL | | |
| Shenzhen OnePlusOne Wireless Communication Technology Co.,Ltd. | | |

4 Mechanical description

4.1 Drawings



| | | |
|--|-------------------|-------------------------------|
| Project: GT01-915 | Author: Haiou.Zhu | File Name: GT01-915_APP_A.doc |
| Date: 2019-08-30 | | |
| Revision: A | | |
| CONFIDENTIAL | | |
| Shenzhen OnePlusOne Wireless Communication Technology Co.,Ltd. | | |