

1. Features

- Glue rod antenna specially designed for LoRa IoT applications.
- Antenna long:10.5cm
- Omni Directional
- Max Gain: 2dBi
- Frequency range: 860 ~ 930Mhz (Different Models)

2. Specification

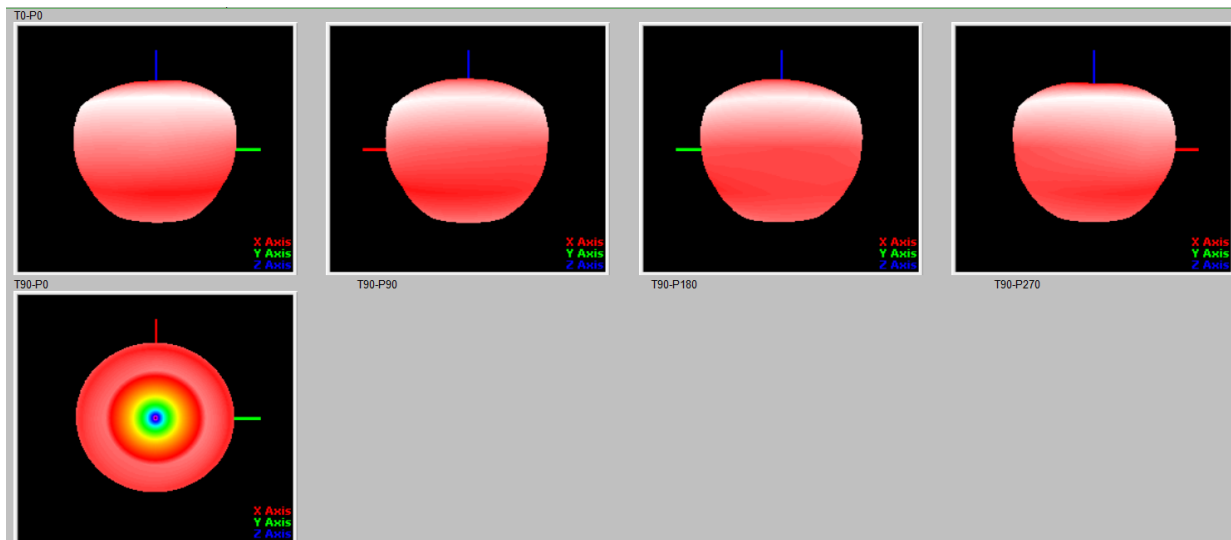
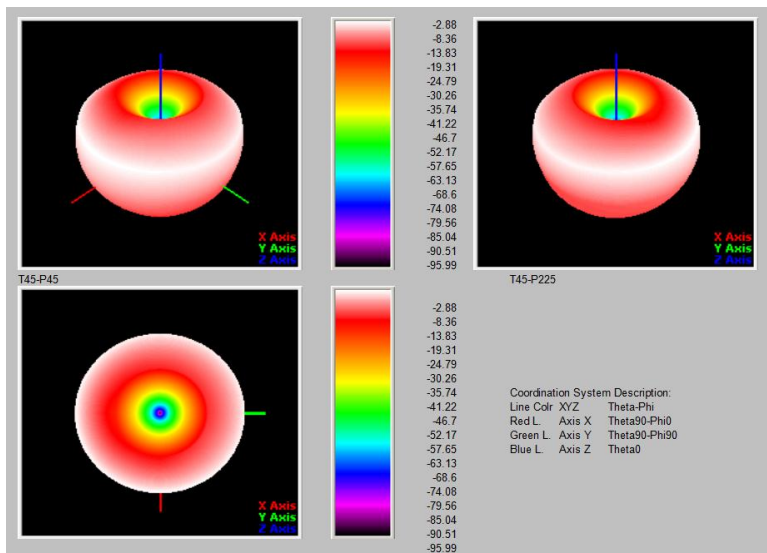
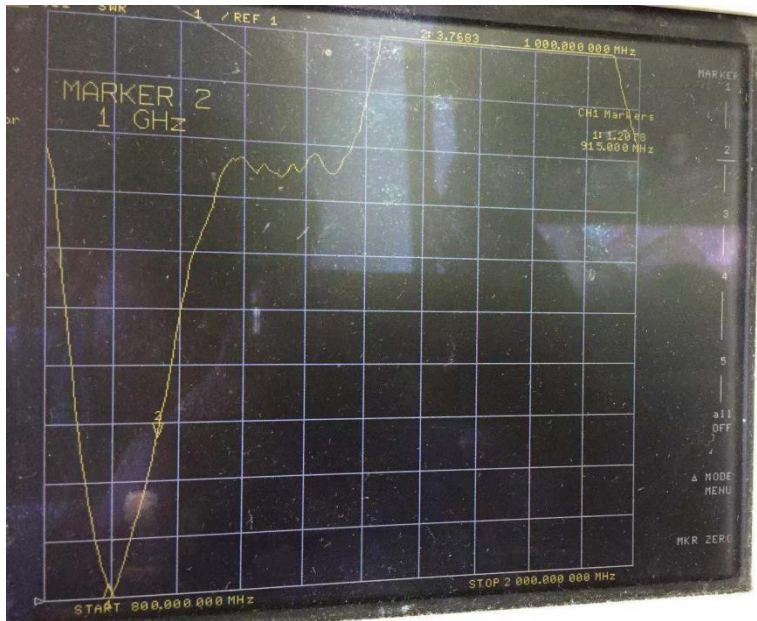
Frequency Range	860 ~ 930Mhz
Max Gain	2.0dBi
VSWR	≤ 1.8
Efficient	> 50%
Beam Width	360°
Impedance	50 Ω
Polarization Form	Vertical
Dimension	105±0.5mm

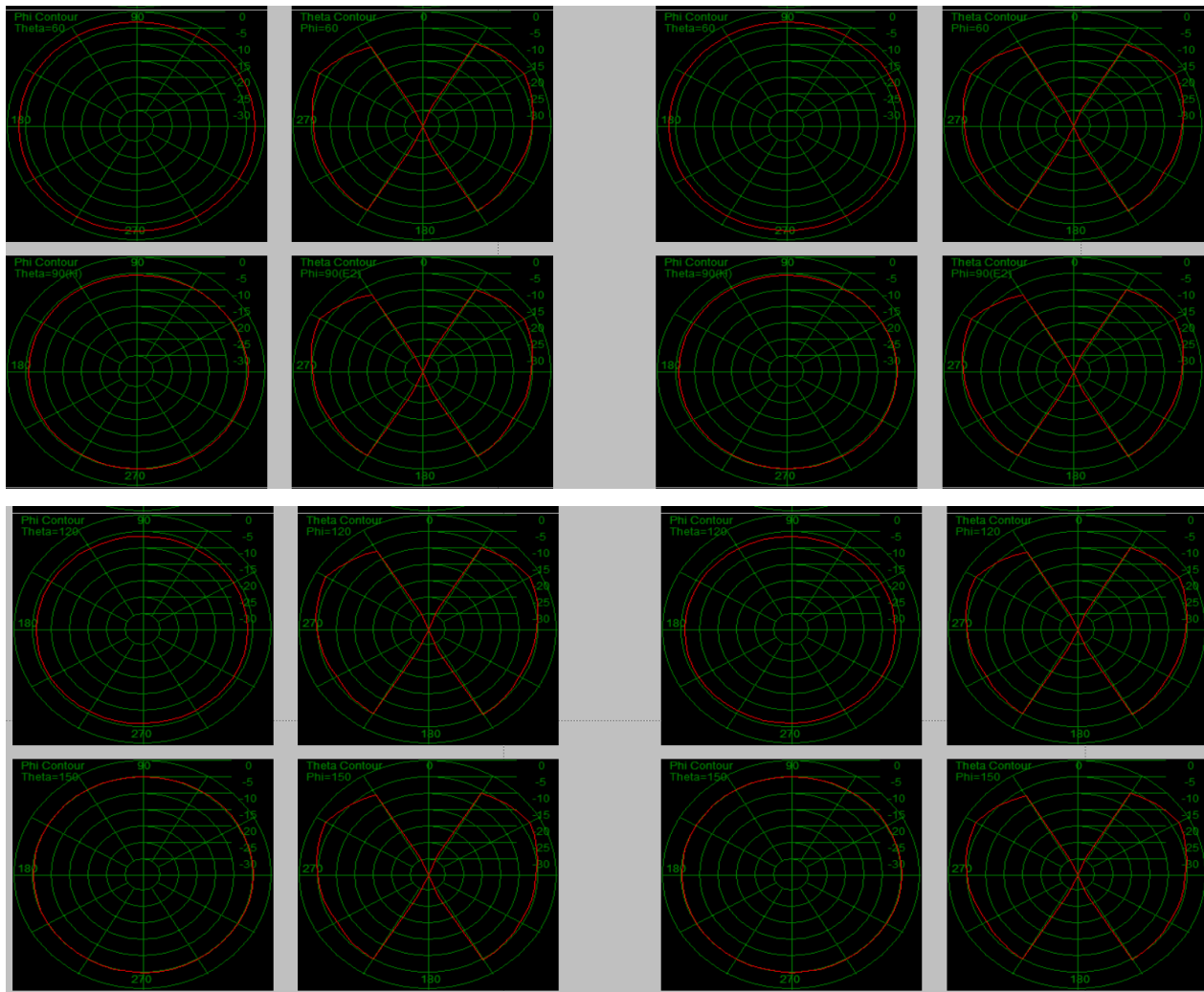
Feisheng Electronics Co., Ltd.

Address: Third Floor, No. 70 Baotong South Road, Yungu Street, Xikeng, Henggang Town, Shenzhen

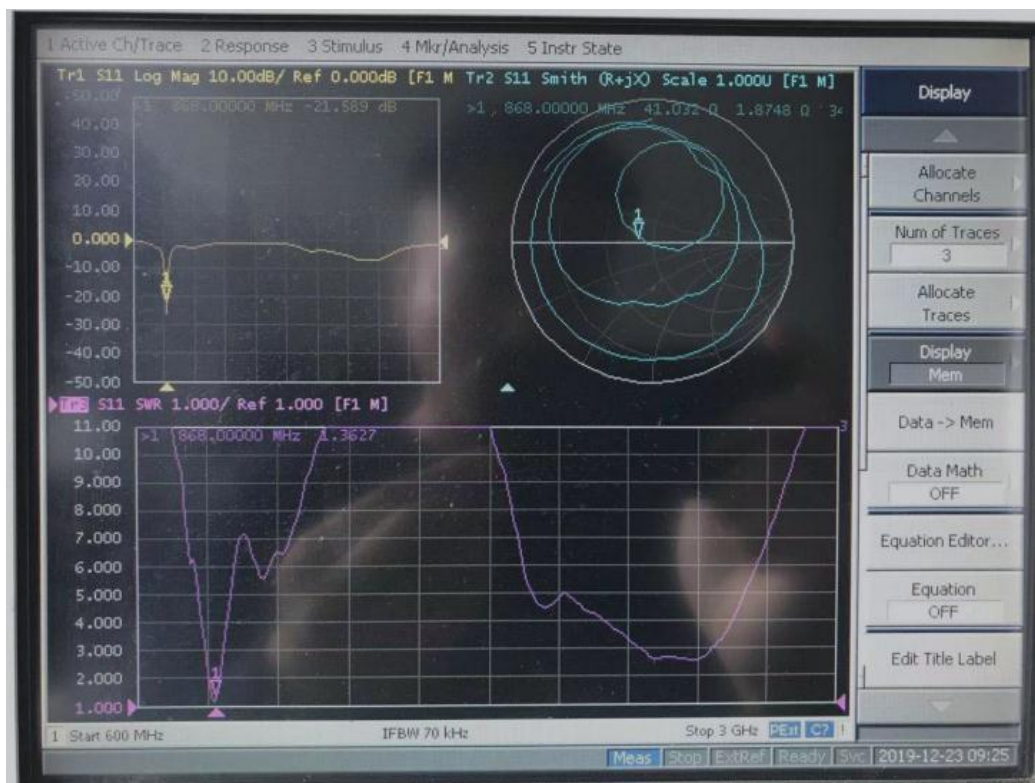
3. VSWR & Polar Diagram

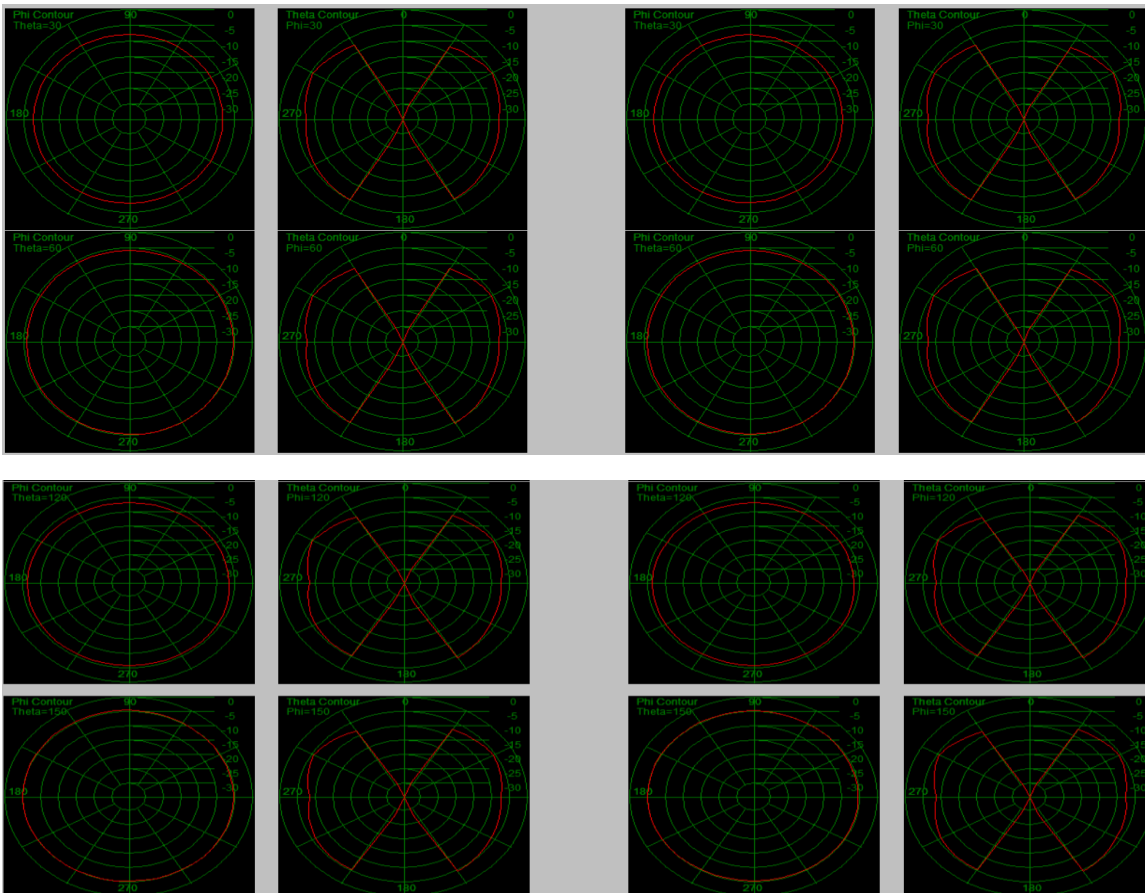
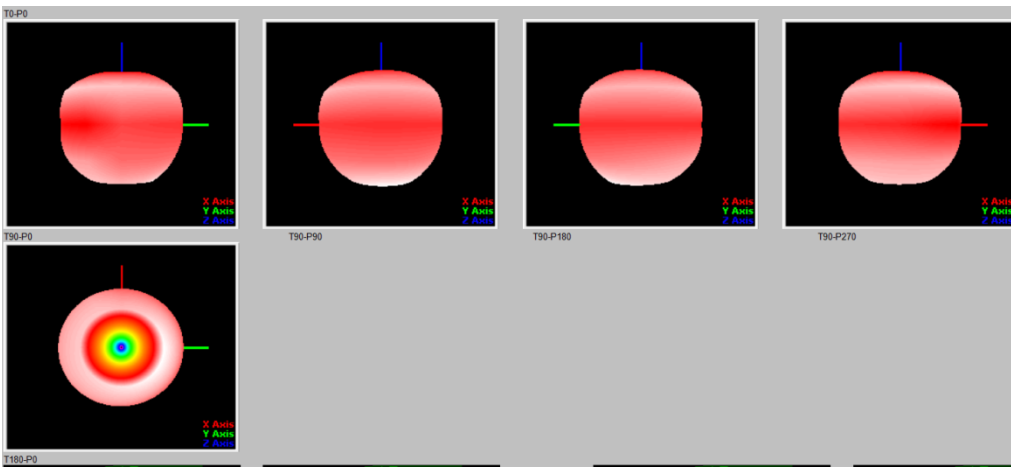
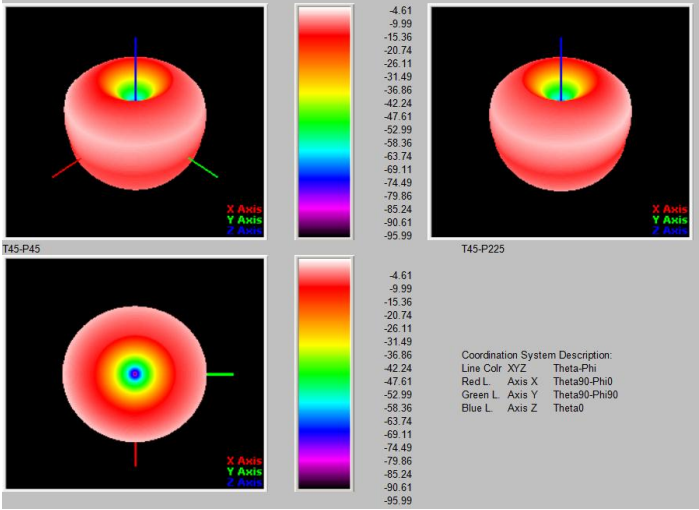
3.1 915

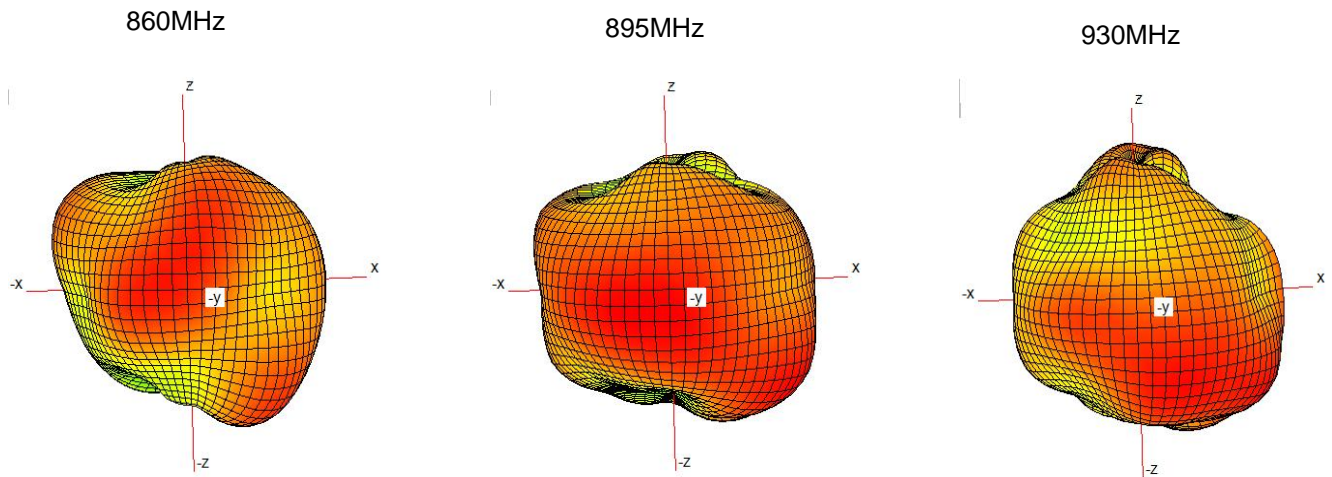




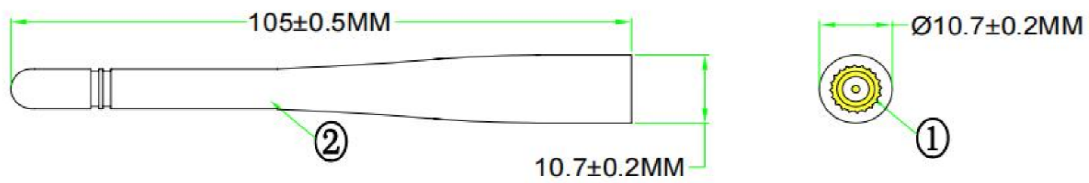
3.2 868







4. Mechanical



5. Package

Antenna x 1

6. Order Info

PART:LoRa_XXX:

XXX: Frequency Band

- **868:** valid frequency: 863Mhz ~ 870Mhz.
- **915:** valid frequency: 902Mhz ~ 928Mhz.